

Sioux

56



2003.1.4254

The Nineteen Hundred and Fifty-Six

S J O U X

Staff

Editor.....

Assistant Editors.....

Associates.....

Patricia Thacker

Kent Watkins

Joyce Runion

Ray Armstrong

Audrey Smeins

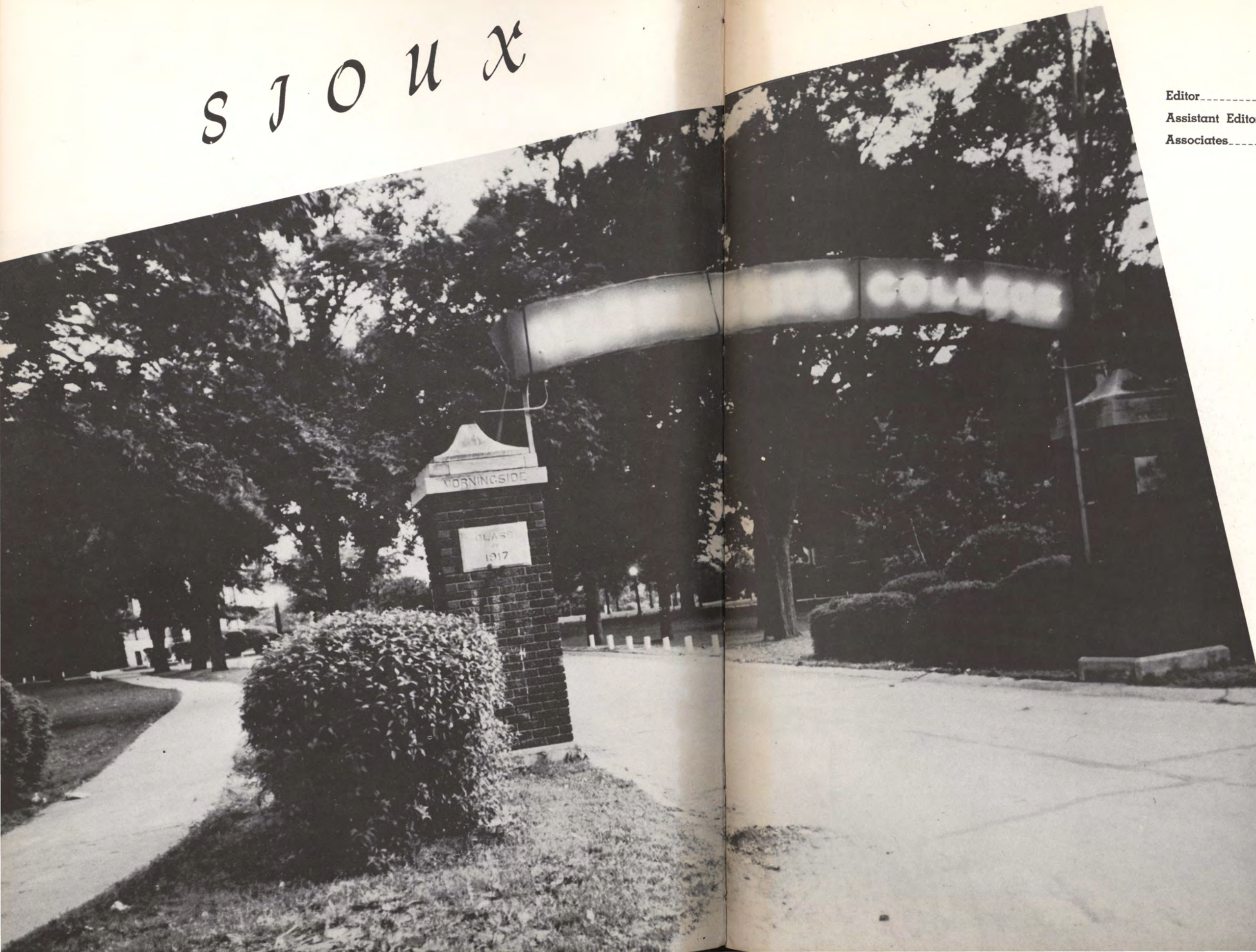
Janice Elze

Marilyn Alloway

Roy Peterson

Merilynn Jordan

Alberta Seal



In Memoriam

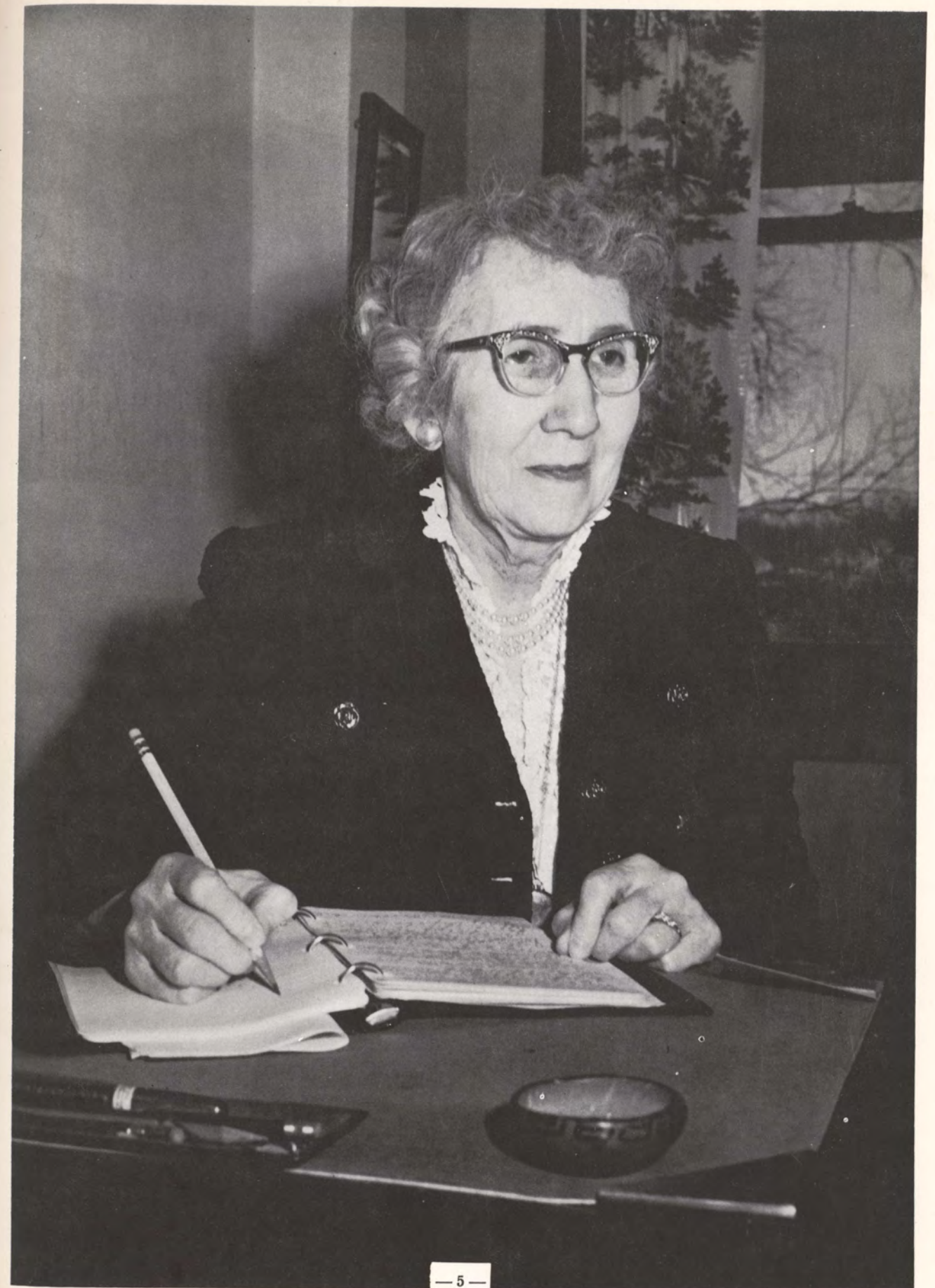
With deep affection and humble hearts we dedicate this annual to Miss Ethel Murray.

In our memories we will cherish those of Miss Murray, who helped to make the past come alive through her history classes. Her personality and enthusiasm for life gave so many students a lift when the road of life seemed difficult. With her encouragement and help, rising above the hurdles of life was easier.

Miss Murray gave her love and service so faithfully and graciously to Morningside College. Few people have given as much of themselves as she did to the college.

Even through her days of pain and suffering she continued to be radiant with hope. She realized that sweet peace was near at hand, but her step did not falter until the day she found it necessary to remain in bed.

Our hearts were laden with sorrow on April 21, 1956 by the death of our beloved Miss Murray. We are sure that her reward is being with her Creator in the garden of love and peace.



Report to the Annual by retiring president Earl A. Roadman

While history is much better fortified in the minds of men than prophecy, it is quite often as difficult to reconstruct the past as to forecast the future. The ever-pressing experiences of today tend to dis-color and change the appearance of the events of yesterday. A beautiful and happy married life tends to glamorize and beautify many rugged experiences of the past which possessed at the time, little of glamour or beauty. I recognize that my report of the past twenty years at Morningside is being made with something of colored glasses because the total of the experiences of those years has been so very gratifying.

I had had three personal relationships to Morningside College prior to my election as president on February 7, 1936. First, I was a member of the Upper Iowa University debate team which contested with Morningside in the spring of 1908. Inter-collegiate debate in that first decade of the twentieth century enjoyed attendance quite parallel to attendance at athletics contests. The old chapel, now Klinger Forum, was filled to capacity for the event. Second, I was scheduled in 1909 to appear in the state oratorical contest which was held in Morningside's chapel. I again was to represent Upper Iowa University. My place, however, was vacant because I had a combination of mumps and an operation for appendicitis. Third, in the autumn semester of 1922, I taught a two-hour course in Rural Sociology by meeting a class of twenty-four students on nine Friday afternoons in four hour sessions.

As a part of that which immediately preceded 1936, there had been a most devastating depression in which students at Morningside from farm homes had brought provisions of eggs, meat and vegetables to pay for tuition. There are pictures in the Sioux City Journal of those days, showing students who were operating a butcher shop in the kitchen of Dimmitt Hall and preparing the "tuition beef" for student consumption. (They had their "beef" and they ate it too). Our graduates went into high school teaching positions with the highest salaries of \$110 a month, or less than one thousand dollars for nine months work. Graduates went into grade teaching positions at \$80.00 per month. Frequently during the first two years following 1936 our faculty salaries were delayed from thirty to sixty days. Sometimes a half salary check was available. During these days, however, college spirit was as high and ennobling as it has ever been. In 1938 the North Central Championship was won. Mr. Buckingham, as a student player, was very important in winning that championship.

We had the famous Corn Hunt which began on a Thursday evening in 1937 in Dimmitt Hall with cider and do-nuts. The faculty and students went forth during Friday and Saturday and visited farms all over northwest Iowa asking for gifts of 15-20 bushels of corn. The corn was only worth about 30 cents a bushel at that time but the mass production of corn for Morningside produced something approximating \$3,500, which was an exceedingly im-

portant amount in the Morningside budget. Students of those days still talk with a gleam in their eye about "The Corn Hunt."

The fact that Morningside's debt was greater than its endowment was a bit difficult but not an impossible factor. Faculty salaries were finally paid in full for the year of 1939. From then on the finances of students and the college improved rapidly. The debt, however, was not fully retired until 1944. The Jones Hall of Science was dedicated in the spring of 1948. The first basketball game was played in the Allee Gymnasium on December 17, 1949. The O'Donoghue Observatory was dedicated at Commencement in 1952. The Klinger Forum and the Men's Dormitory were first occupied in September of 1953. The new look in the Conservatory of Music began in 1954 and the Miriam Jones Hall of Culture will be completed for housing the Petersmeyer Library in 1956.

Naturally, one of the most interesting and important periods of the immediate past was the program of GI education. In the spring of 1942 about four hundred Air Force Cadets were moved into Dimmitt Hall. Eight large houses were rented for the occupancy of the women. The Grammer House Girls are still maintaining something of a round-robin communications to keep ever alive the wonderful experiences of those days and events.

At Dimmitt Hall two boys lived where one girl had lived before. Four boys were put in each room. Closet space was much less of a problem with men than with women. The enrollment of women remained about normal. The romances which began were above normal.

The number of college men on the campus, apart from the cadets, was greatly reduced. In September, 1944 there were about forty-six men. Our athletic directors had all gone into service. Our college basketball team was coached by the ladies physical educational director. The North Central Conference had abandoned its schedules entirely. There were a few inter-collegiate games. However, we did not play the University of South Dakota. We boasted at least, that the University feared risking the experience.

In 1945 Germany surrendered in May and Japan in August. The G.I. Bill had been put into operation whereby the tuition costs were paid directly to the college and subsistence of \$90-\$120 paid directly to the students. Enrollments increased so rapidly that there were over five hundred men enrolled in February, 1946. Five hundred men in the spring of 1946 in contrast with the fifty-six men in October, 1944 was a shock in every direction. The effort to secure sufficient faculty was very great. In 1947 before we had the Jones Hall of Science, we had a daytime enrollment of twelve hundred fulltime students. Classes were scheduled not only on Saturday but from 7 A. M. to 9 P. M. in order to have sufficient classroom facilities. The basement of Grace Church and the building now occupied by the Curran Drug Store were used as classrooms.

The most surprising thing that occurred educationally was the discovery that married men could and would do such excellent work in scholarship. The G.I. Bill was more influential in expanding educational policy than any other single event in American education. It proved that a government scholarship for education was worthy. It also changed educational housing concepts making housing for married students necessary.

Prior to 1936 the catalog of Morningside College prohibited students from remaining in school if they married without the previously arranged consent of the president. The first faculty meeting over which I presided at Morningside had to deal with a clandestine marriage which had just been revealed. Professor Steinbrunner remarked in that faculty session that "marriage is no crime." It was unanimously voted to permit the offending student to remain. It was also voted to change the catalog at its next issue and leave out the onimous prohibition.

The far reaching success of the G.I. program was first, the chance it gave to all who had been in service to secure a college education. Second, the subsistence payment was far less than the student could have earned elsewhere. He, therefore, remained in school because he wanted to. Third, the government gave the professor the full authority to decide whether the student was worthy of securing the money from the government for the government agencies furnished the opportunity but did not pressure as to practices.

The three things, in addition to marriage of students, which have changed the most in student life are: cars on the campus, the student council organization, the loan fund. About 1948 Marvin Levich, a student who received the Lydia Roberts scholarship award three years in succession at Columbia University, rewrote the constitution and changed the government of the student council. Up to that time the student council was composed of a representative from each of the organizations on the campus. It finally became exceedingly difficult to define an organization. It was easier to change the constitution than to define the organizations. Prior to 1942 we never had enough loan funds to supply the demand of the students. Since 1950 we have not had sufficient applications to requisition all the funds that have been available. Prior to the world war students were willing to risk going into debt to secure an education. They dared risk debt for positions which would pay them \$1,000. Students now apply for scholarships and expect from \$3,000 to \$4,000 income when they finish college.

Morningside received some of its widest publicity in the years of 1944-1945. In October of 1944, the Board of Trustees of Morningside College bought the Sioux City Street Car Company. A man who had lived in Sioux City for thirty years said that that event caused more conversation on the streets than any other incident in his life in Sioux City. Morningside was thought to be both sinful and daffy to have purchased public utilities. It proved, however, to be the best investment Morningside ever made. The students had a sort of a whee about getting free rides. I suggested one morning in chapel that since the college had farms that they might want free oatmeal for breakfast. The demand for

free rides subsided.

Life Magazine for November 6, 1944 carries a full three page story of one of the first G.I.'s in the United States to enroll under the G.I. Bill. Charles Wise who had been terribly wounded in north Africa and whose wife was teaching school in Sioux City, was the G.I. whose experience was presented in the Life Magazine story. Mr. Wise is now an engineer with the C. F. Lytle Company in Sioux City.

In October of 1945, the then popular "Wake Up, America" broadcast originated on the Morningside campus. There were ten people who came from New York City to produce that event. Also in September of 1945 Morningside received the largest bequest in the estate of Dr. Herbert Saylor of Pocatontas. It is anticipated that by 1965 it will amount to a quarter of a million dollars.

In 1946 the Homecoming Queen was crowned in the old Tomba ballroom. The Tomba was also used in the 1947 Homecoming event but their racial prohibition made it impossible for the student body to go there subsequently.

No record of student life at Morningside would be complete without reference to the pre-engineers of the pre-war days. Chemistry was in the old gymnasium in the spot subsequently occupied by the art department, biology was on the second floor of Main Hall, in Dr. Green's office and classroom, physics was in the basement where the Collegian Reporter now holds forth. Although scattered all over the place, there was a ten year period of pre-engineering organization which was one of tremendous consequence.

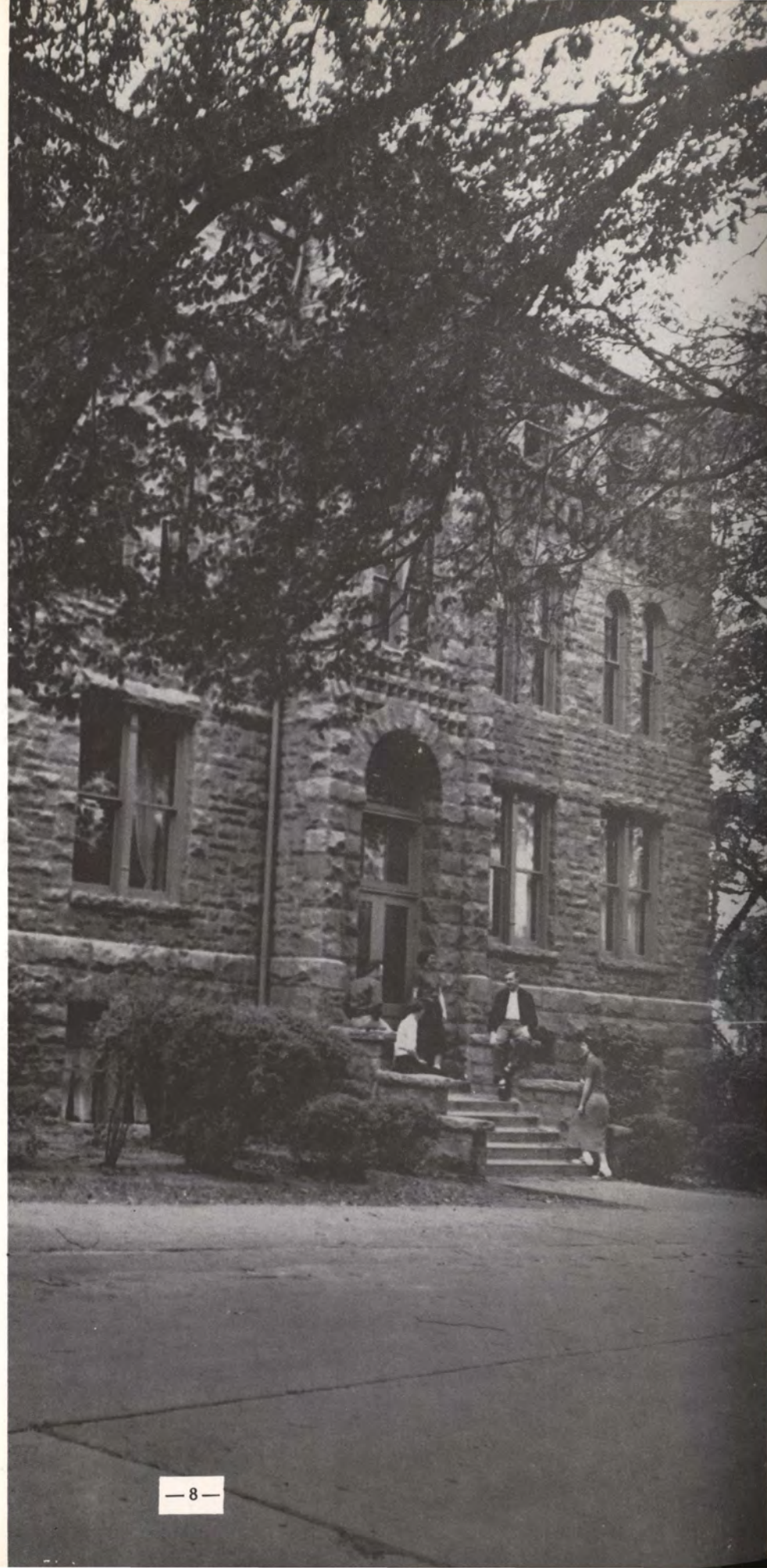
The one question asked of me far more than any other is "Are students today better than when you were a student." I never answer directly. I also say something like this: "Well, they are ours aren't they? You always love your own better than others, don't you?" No one can answer such a question. There are no comparable criteria for measurements. Whether students are better or worse makes little difference. Whether students are serious, daring and religiously determined to use the privileges which they have for whatever service is to be demanded in the future is all important.

No persons could be more proud and happy than Mrs. Roadman and I for all that we have seen and known about the Morningsiders who have been faculty and students together. We have passed through the terrors of wars and tensions of peace and depression during these years. We have had marriages and home making including more babies born to our homes than ever before. We have seen the assumption of community responsibility and citizenship by our former students. We rejoice in every achievement and we pray for each and all in moments of need.

I could propose a number of things which, I am sure, should and will be done in the future and which will increase the dedication of students and faculty to ever higher scholarship, Christian citizenship and the gracious pursuit of life's ideals. These, however, constitute the area of dreams, plans and pursuits of the next president. May God bless and the campus love him greatly!

Earl A. Roadman.

C
O
N
S
E
R
V
A
T
O
R
Y



G
R
A
C
E
C
H
U
R
C
H





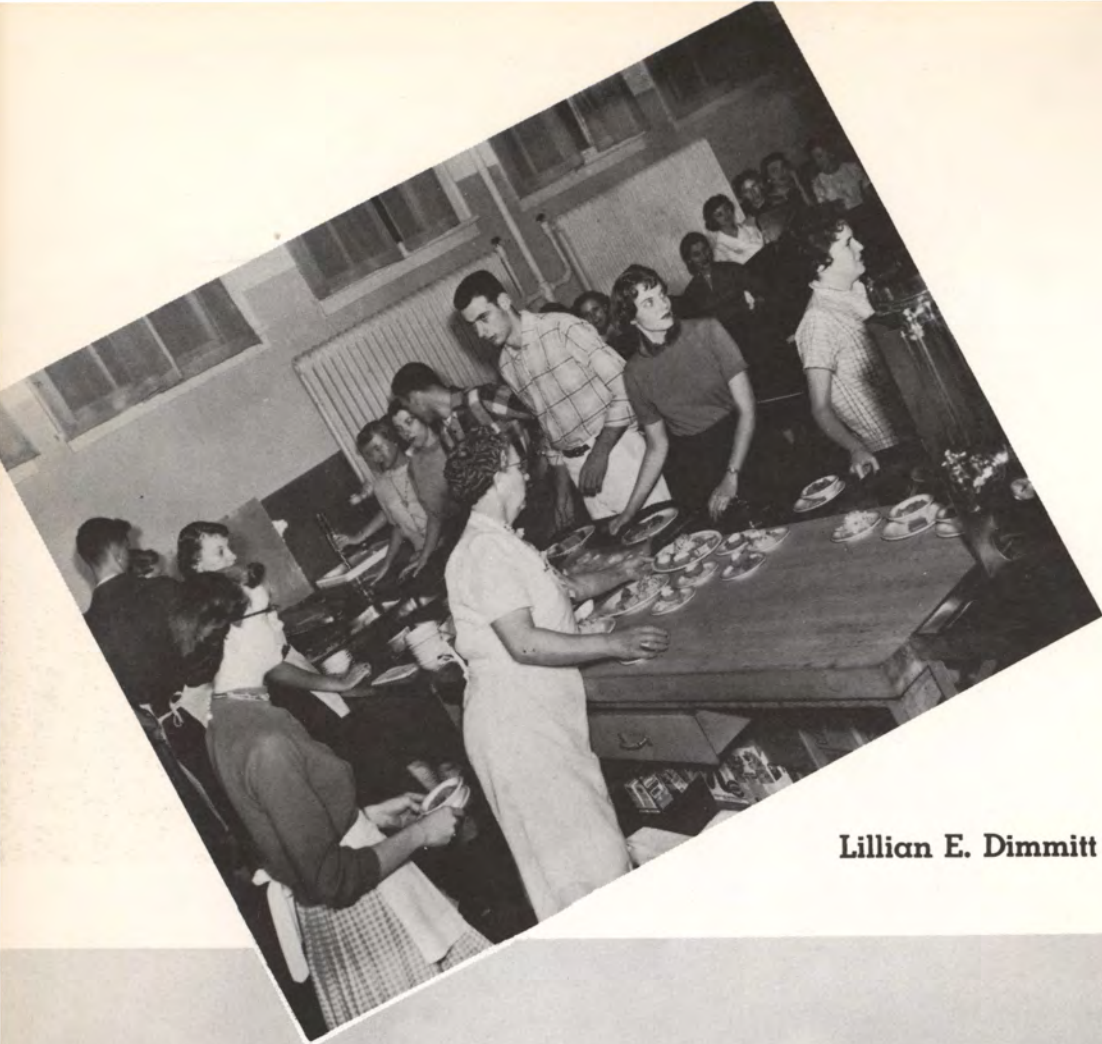
O'Donoghue
Observatory



A. W. Jones
Hall of Science



Main Hall



Cafeteria

Lillian E. Dimmitt Hall for Women



Men's Residence Hall



Student Union





Alumni Gym

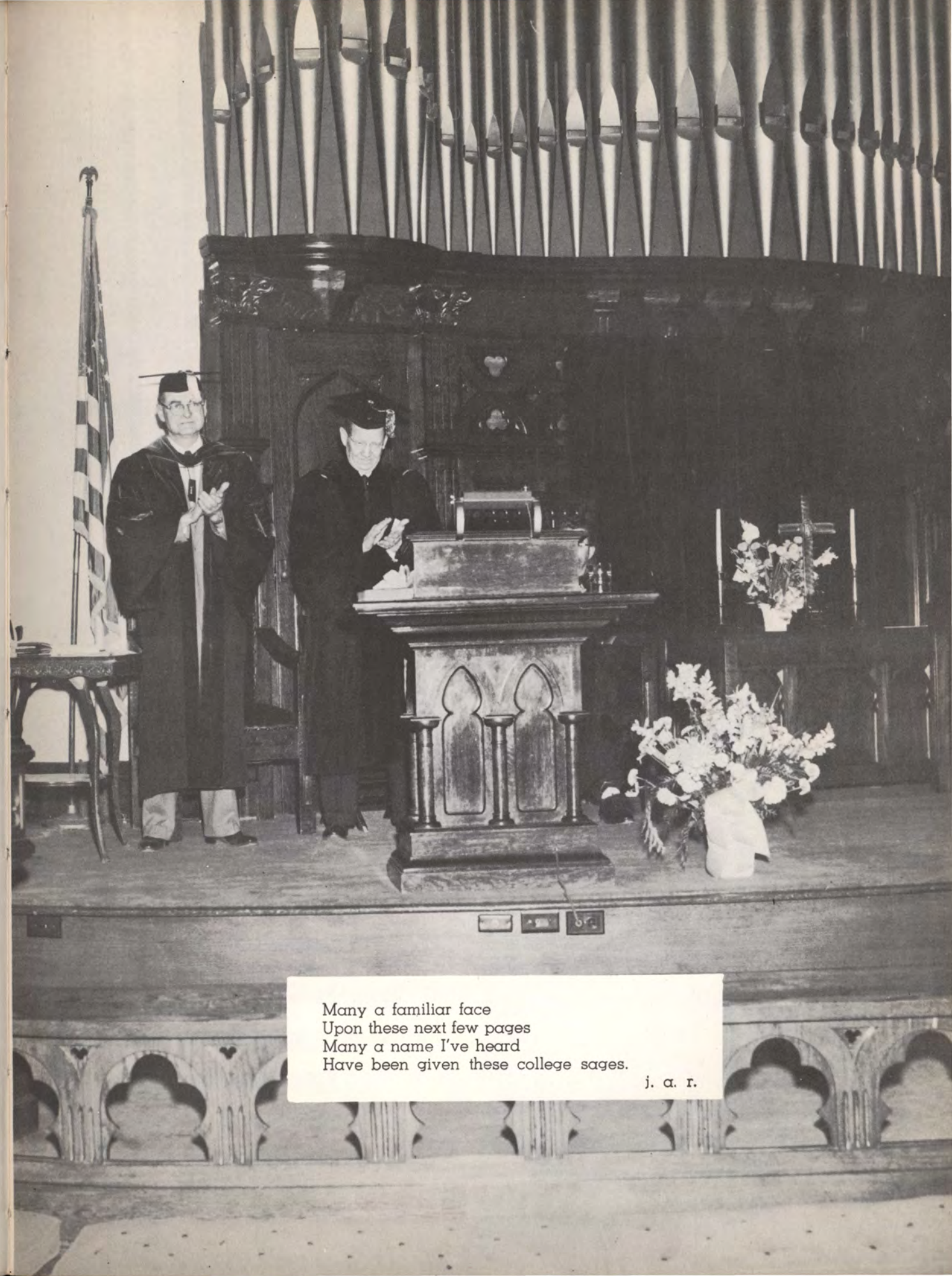
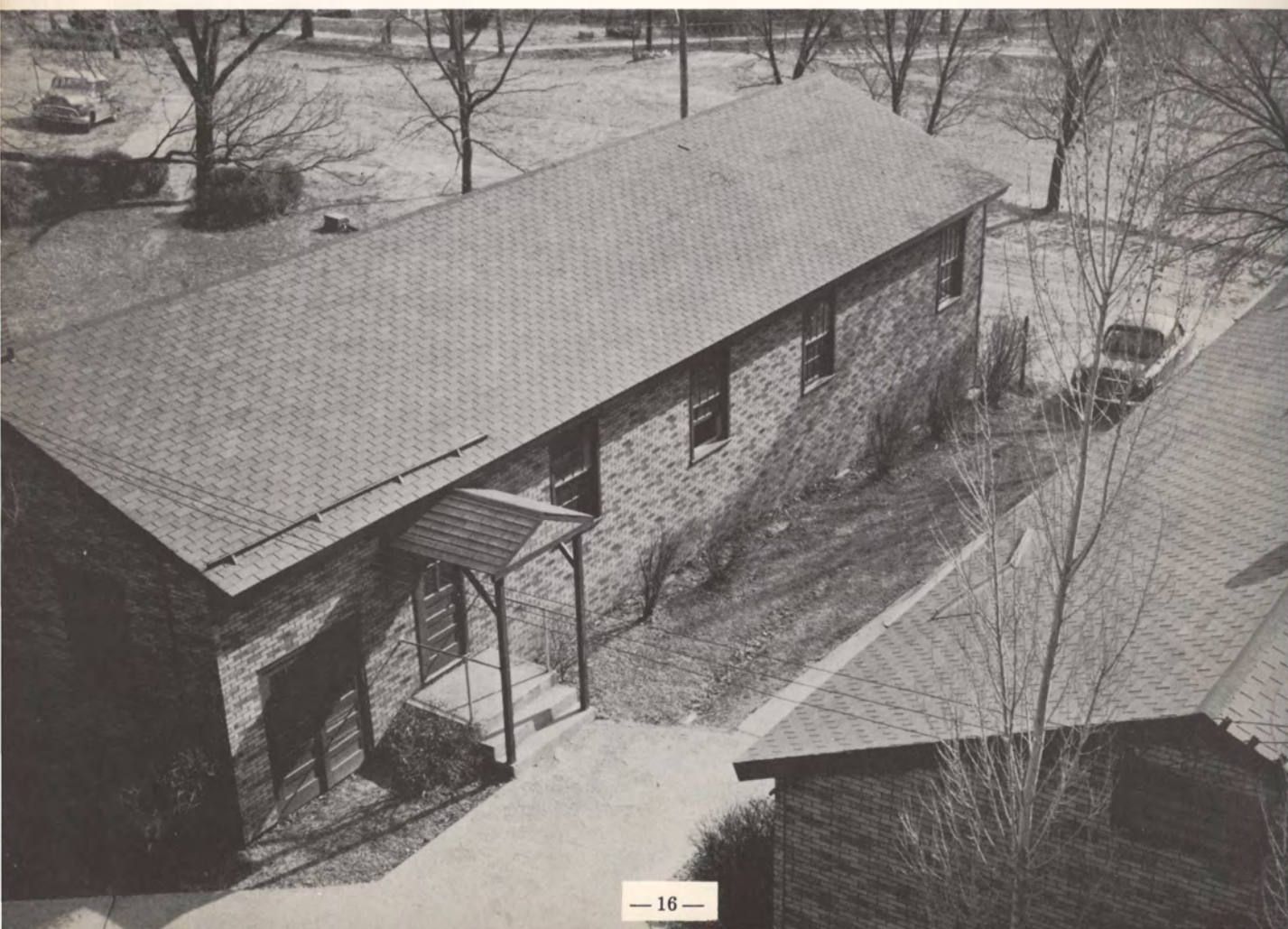


New Gym Library



Art Department

Department of Speech

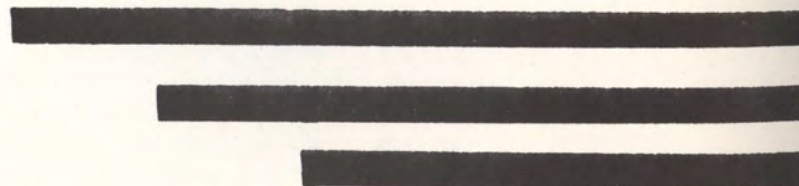


Many a familiar face
Upon these next few pages
Many a name I've heard
Have been given these college sages.

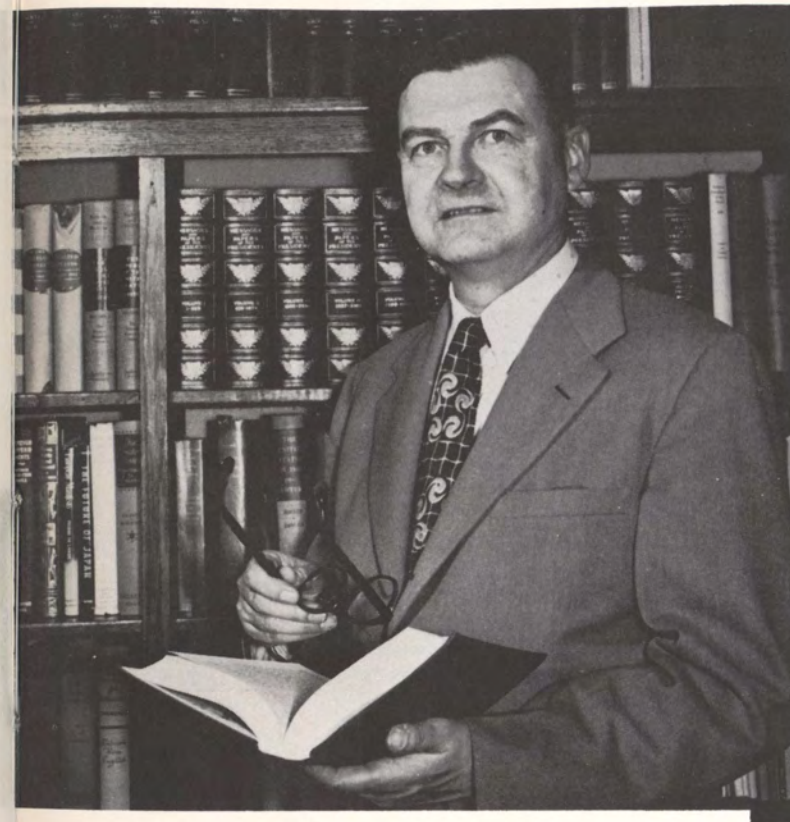
j. a. r.



**The President Of The College
Dr. Earl A. Roadman**

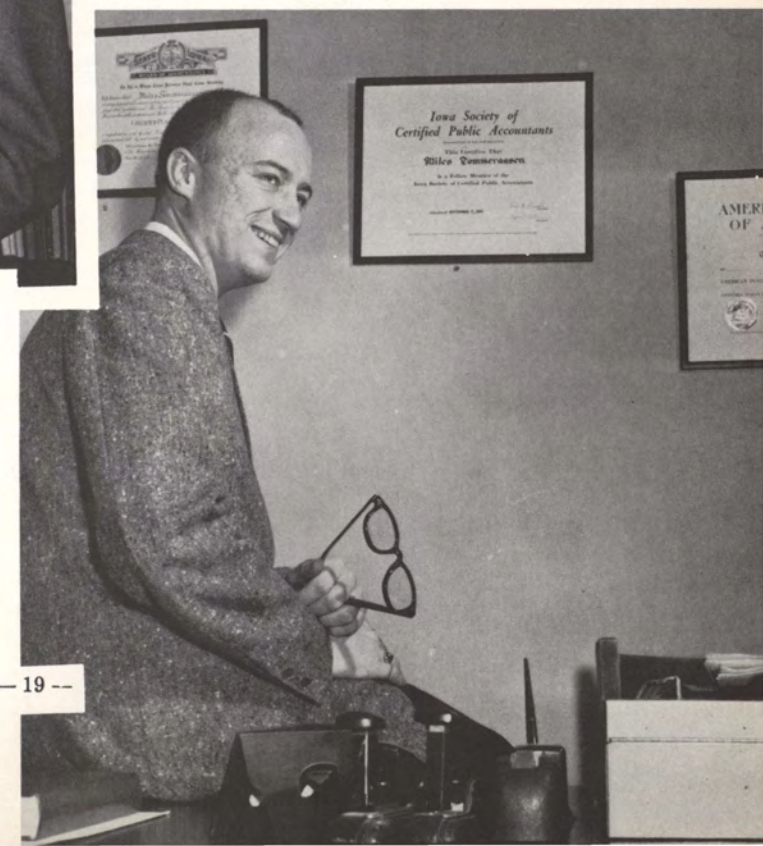


**Dean Of Women
Margaret J. Robison**



**Dean Of College
Dr. Thomas E. Tweito**

**Dean Of Men
Miles Tommeraasen**





WAYNE LILJEGREN B.S.C.; Director of Admissions.

HAZEL SIMAN MAHOOD A.B.; Alumni Secretary.

ELWOOD HARLAN OLSEN LL.M.; Business Manager

HAZEL MARGARET BATZER Associate Professor of English; A.B., Central Michigan College; A.M., Ph.D., University of Michigan.

ALBERT WILLIAM BUCKINGHAM Director of Athletics; A.B., Morningside College; M.A., Stanford University.



CLIFFORD ERNEST BOWMAN Associate Professor of History; A.B., Augustana College; A.M., University of Nebraska; University of Iowa; Johnson Fellow in American History; University of Omaha.

MARY ELIZABETH BOWNE Director of Physical Education for Women; A.B., Coe College; M.S., University of Wisconsin; University of Iowa; University of Wisconsin.

CLINTON EDO BURRIS Librarian; A.B., Otterbein College; B.D., Bonebrake Theological Seminary; A.M., University of Chicago.

VESTA CZATT BURRIS Dean of Women, Second Semester, Assistant Librarian; A.B., Morningside College.

GLENN RAY BUSHYAGER Professor of Mathematics; B.S., Allegheny College; A.M., Pennsylvania State College; University of Michigan; University of Chicago.

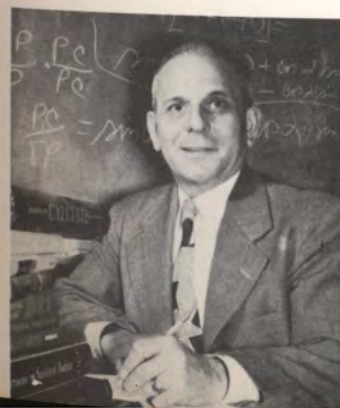
MABEL A. CARLSON Instructor in Home Economics; B.S., Kansas State College.

LILLIAN ENGLISH DIMMITT Dean of Women Emeritus; Professor of Ancient Languages; A.B., Illinois Wesleyan University; A.M., Columbia University; L.H.D., Illinois Wesleyan University; University of Chicago; American School of Classical Studies, Rome; Litt.D., Morningside College.

RUSSELL MERLE EIDSMOE Professor of Education; A.B., Yankton College; A.M., University of South Dakota; University of Minnesota; University of Chicago.

ALBERT JOHN FYFE Professor of English; B.A. University of Toronto; M.A., University of Toronto; Ph.D., University of Chicago; Oxford University.

Faculty





Faculty

LOIS JANE GRAMMER Assistant Professor and Head of Music Education Department; B.F.A., University of Nebraska; Mus.M., Northwestern University; University of Colorado.

JUSTUS CARLETON GREEN Director of Religious Activities; B.A., University of Southern California; S.T.B., Ph.D., Boston University.

IRA JAMES GWINN Registrar, Associate Professor of Physics; A.B., Morningside College; M.S., State University of Iowa; North-Central Workshop in Higher Education, University of Minnesota.

EDITH HADLEY Associate Professor of English; B.A., M.A., University of Wisconsin.

JOSEPH D. HALE Livestock Marketing; Morningside College.

HORACE BOIS HAWTHORN Professor of Sociology; B.S., M.S., Iowa State College; Ph.D., University of Wisconsin.

EARL HOERGER Chemistry; Wabash College, Indiana; Ph.D., University of California.

JAMES H. HUSTES Music; Juilliard School of Music, N. Y.



LEO KUCINSKI Head of Violin and Orchestra; Mus.B., Morningside College; Cleveland Institute of Music; Conducting Fellowship in Juilliard School of Music.

ROBERT MERL LARSON Director of the Conservatory of Music; B.M., St. Olaf College; M.M., Ph.D., Northwestern University.

ROBERT J. LIPP Language; Westminster College; M.L., University of Pittsburgh.

ROBERT ETHAN LOWRY Director of Band; Wood-Wind Instruments; Mus.B., Morningside College; M.M., University of South Dakota.

PAUL MacCOLLIN Director of the Conservatory of Music, and Professor of Voice, Emeritus; A.B., Oberlin College; Mus.B., Mus.D., Morningside College; Chautauqua Summer School of Music; George Peabody College for Teachers.

ELIZABETH NEWTON MacCOLLIN Instructor in Voice; Mus.B., Oberlin Conservatory of Music; A.B., Morningside College.

W. W. McCONE Physics; Lebanon Valley College; Syracuse University; University of Wyoming; M.A., Penn State College.

MARCIA AGNES McNEE Associate Professor of Elementary Education; A.B., Upper Iowa University; A.M., University of Chicago; University of Iowa; University of Minnesota.

Faculty





Faculty

WILLIAM A. MONTGOMERY Biology; B.S., Millsap College; M.S., Mississippi State; Ph.D., University of Nebraska.

DONALD NAUMAN MORRISON Associate Professor of Musical Theory; B.M., Michigan State College; M.M., Eastman School; University of Pittsburgh; The George Washington University; University of Indiana.

WILBUR NORTON MOULTON Assistant Professor of Chemistry; B.S., Sioux Falls College; M.S., Ph.D., University of Minnesota.

ELSIE MULLER Mathematics; Wayne State Teachers College; University of Michigan.

ETHEL RUTH MURRAY Professor of History; A.B., Morningside College; A.M., University of Illinois; Columbia University; Washington University.

HELEN NORTHRUP Secretarial Science; Morningside College.

LeROY BANKS NYDEGGER Associate Professor of Biology; B.S., Iowa State College; M.S., University of Nebraska; University of Iowa; University of Southern California; University of Washington.



DAVID REIGEL English; B.A., M.A., Fort Hays State College.

ROBERT J. SCHMIDT Sociology; Illinois College; M.A., Harvard; Ph.D., Washington University.

HAZEL SCOTT Instructor of English; B.A., Albion College; M.A., Michigan State College; Northwestern University.

HERBERT SPENCER Education; B.S., Ph.D., University of Nebraska; M.A., Columbia and N.Y.U.

WILLIAM E. SPORNITZ Assistant Professor in Business Administration; B.S., A.M., University of North Dakota.

SAMUEL WESLEY JACOBS WALSH Professor of Philosophy; A.B., Mount Allison University; A.M., S.T.B., Boston University; Harvard University; University of London; Ph.D., Boston University.

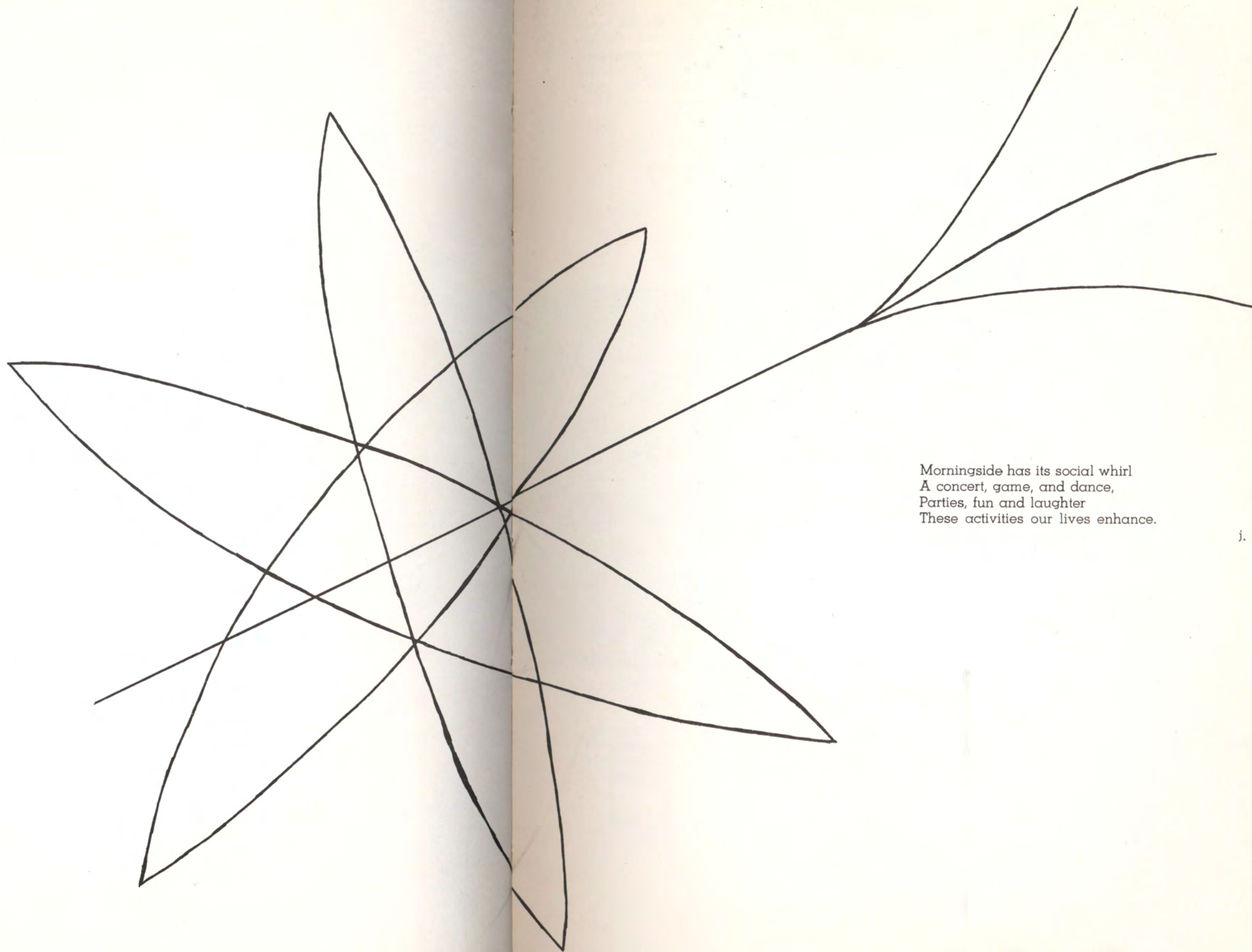
JERRY WEST Speech; Fairmont College; University of West Virginia; Ph.D., University of Denver.

ELIZABETH WHITTINGTON Piano; Birmingham Conservatory of Music; New York; Hamburg, Germany.

WILLIAM ZIMMERMAN Head of Art Department; American Academy of Art; Art Institute of Chicago; University of Chicago; Roosevelt College; B.F.A., M.F.A., Art Institute of Chicago, B.A.E.

Faculty





Morningside has its social whirl
A concert, game, and dance,
Parties, fun and laughter
These activities our lives enhance.

j. a. r.



The first few days for freshman were crowded with entrance exams. It seemed as if questions with or without answers popped up from everywhere.

Exams



S.C.A. Mixer

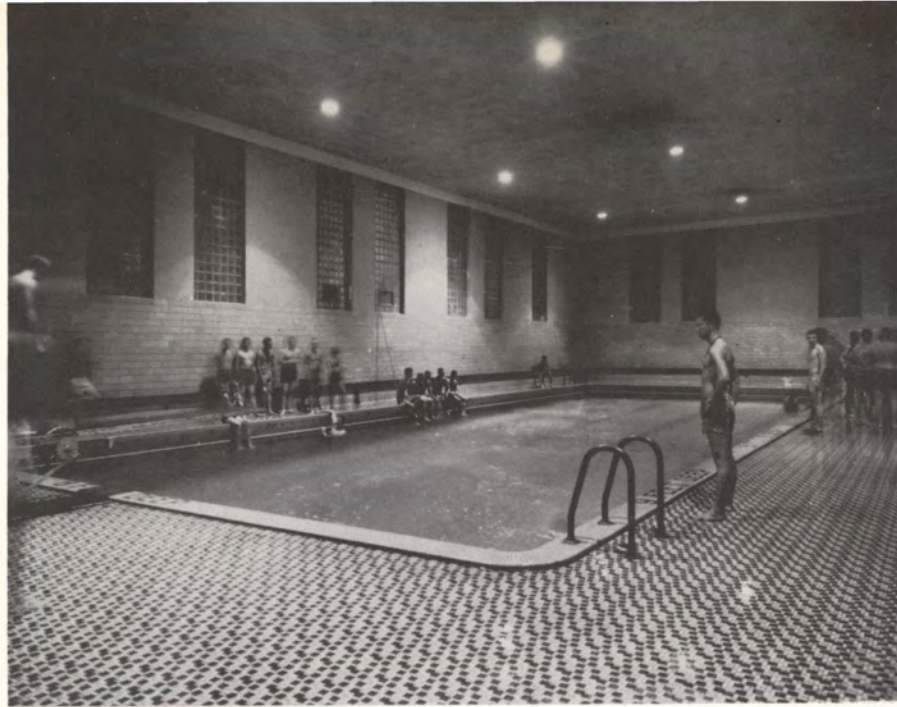
The Student Christian Association sponsored a get acquainted mixer for all the students and faculty during the first week.



Especially planned for freshman to learn to know each other. Fun was on hand for everyone, with games and with refreshments.

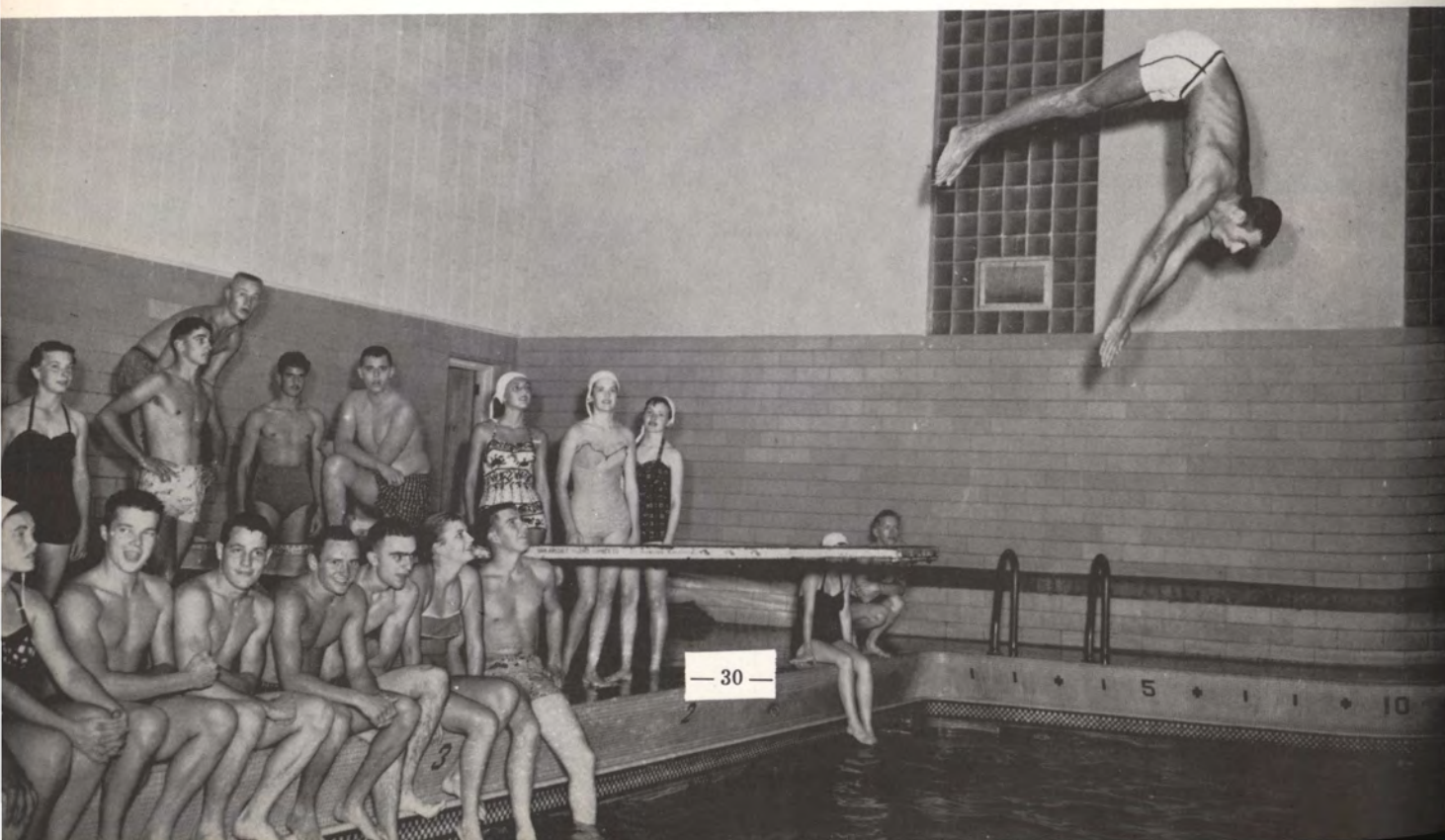
Dean's Party



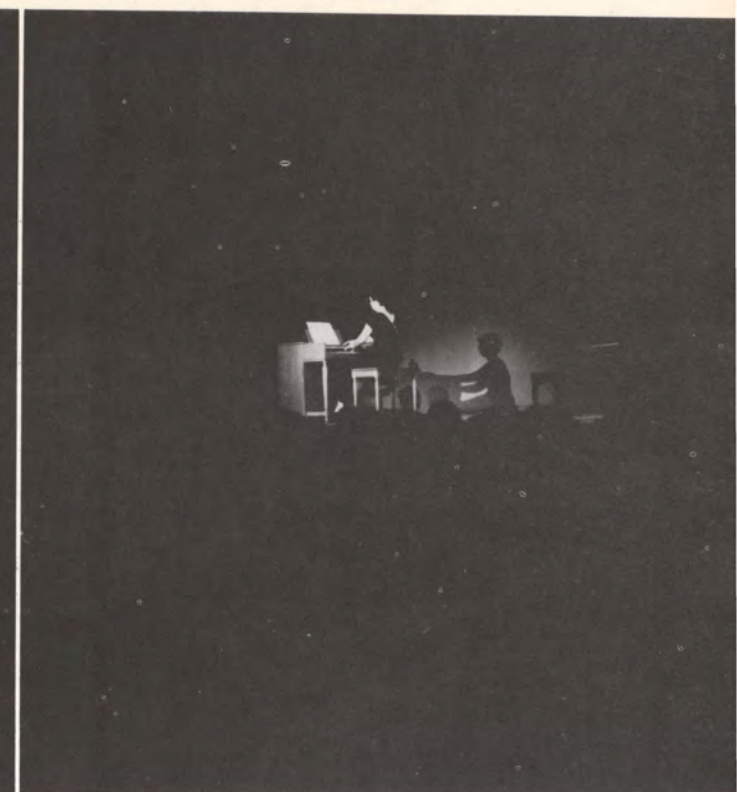


Freshman Party

The energetic and lively freshmen sponsored a swimming party. There is no doubt that they were all wet!!!



— 30 —



Freshman Talent Show

The freshmen went "all out" to show the collegians their wares at the Freshman talent show. The variety of acts and talent showed to all real ability of these newcomers to Morningside. This was another of the highlights of the first week of campus activity.



— 31 —



Big and Little Sister Picnic

Agora is the largest organization on campus. It was organized in 1914 for the purpose of closer fellowship and cooperation between the girls on campus. Every coed here at Morningside is a member. Among the many activities is the Big and Little Sister plan.



Big and Little Sister Tea

Each new freshman is assigned a Big Sister, who is to help acquaint her with the campus and college personnel. Several special events are planned, some formal while others are very informal. Included in these are the picnic and tea. Both are looked forward to by all the girls.





Gamma Dance Contest

An event which created much interest was the Gamma dance contest. Fun for all, with lots of competition!



Band Day

This was a colorful spectacle with bands from nearly 50 high schools in attendance. Strains of music could be heard throughout the campus.



"Morningside, Morningside,
Best of any school on earth
You'll soon decide,
Skies so blue, Friends so true,
Take me back to student days at Morningside."



Lucy Yoshioka

Homecoming

Among the highlights of Homecoming was the race for queen and all the glory surrounding the coronation of the queen. Four lovely girls, each with the potential to be a queen, were the candidates. At the annual Homecoming dance at Allee gymnasium the big moment arrived. The queen's attendants and their escorts began the royal parade. Then breaking through the large football, and down the carpet to the strains of "Sweet and Lovely" came Lucy Yoshioka and Dan Emmerson, her escort. Dr. Earl A. Roadman crowned Lucy, Homecoming Queen of 1955. Tributes were paid to Her Majesty by Don Templeton, Bob Harris, Dona Kargas, and the Madrigal Singers.



Georgia Hix



Marilyn Reynders



Raye Cottington



Starting at the Municipal Auditorium, the parade wended its way through the main part of the downtown business section of Sioux City. Three bands were present—Sons of the Legion drum and bugle corps, East high school band, and the Morningside College band.

Morningside's 1955 Homecoming Queen Lucy Yoshioka, rode in a lead car followed by her attendants Georgia Hix, Raye Cottington and Marilyn Reynders. The Freshman class elected a queen also. She was Audrey Smeins, a Luverne, Minnesota girl. Audrey's attendants were Penny Gumz from Madison, South Dakota and Fern Carnes of Sioux City. Queens and attendants from Augustana and the University of South Dakota were featured also.

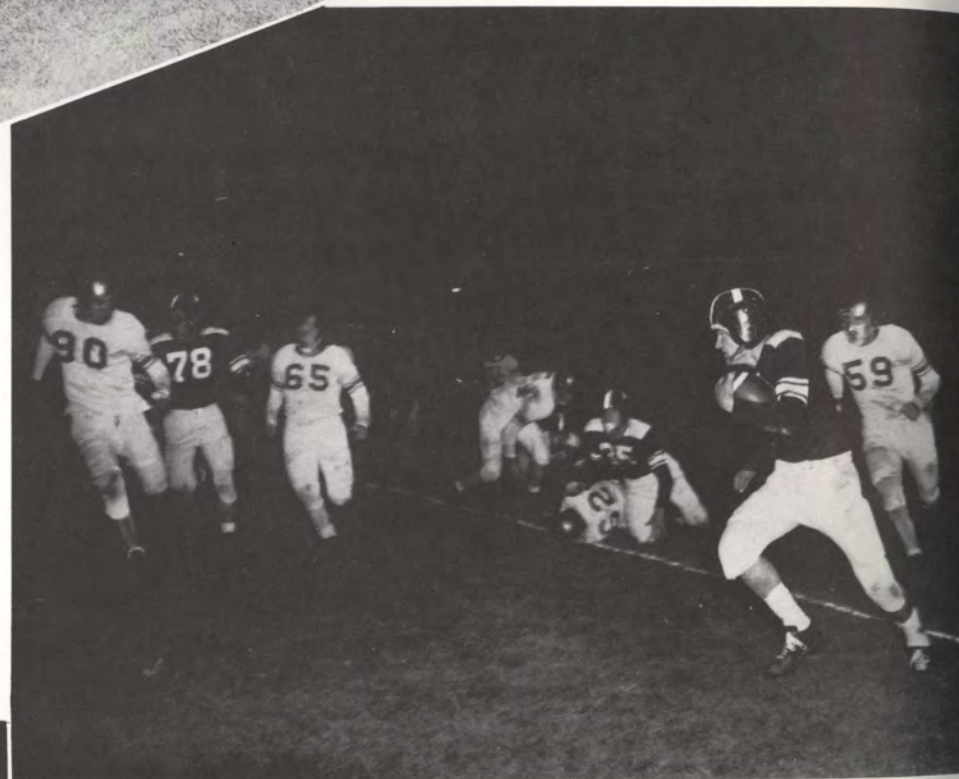
Floats were entered by the freshman class, the six social sororities and fraternities, Cosmopolitan Club, and Agora. It was Agora's first entry in a Homecoming parade.

Placing third in competition was the Tau Kappa Epsilon fraternity float with "Maroon the Vikings" as its slogan. Second place was earned by Kappa Zeta Chi sorority with a float entitled "On Our Toes." The champion float was the "brain child" of the Sigma Phi Epsilon fraternity with their creation depicting "Steps to Victory."

Reunion luncheons of six social sororities and fraternities took place at downtown hotels and restaurants in the afternoon. Members of the 1947 North Central Conference champion basketball team were honored by fellow "M" club members at another luncheon.

Approximately 150 persons attended the alumni association dinner in Lillian E. Dimmitt hall Saturday night. An alumni coffee hour was held in the lounge of the men's dormitory following the football game.





It ain't the individual,
Nor the army as a whole,
But the everlasting teamwork
Of every bloomin' soul.

J. Mason Knox.



First row: Line coach Jack Jennett, Vince Arioso, Bob Reynders, Ken Grubbe, Bob Fladmark, Ron Fredricksen, Cliff Hinrichs, Rusty Mohler, Jim Hindman, Don Hoffman, Jerry Freeman, DeLaine Koch, freshman coach Dave Van Vleet. Second row: Backfield coach Don Protextor, Jack Paulson, Bob Meinhardt, Bob Puff, Red Getting, Dan Emmerson, Al Lindgren, Chuck Phenix, Frank Mahan, Ray Clark, Dave Bogue, Fred Warren, Duane Baugous, manager Dick Welding. Third row: Head coach Dewey Halford, Vern Wyland, Bob Buckley, Dutch Bryan, Gene Wulf, Ken Bohlke, Larry Johnson, Larry Hapke, Darold Puff, Bud Mounts, Bill Thomas, Terry Lewis, Bruce Kammermayer, Tom Tooley, Jim Welton. Jerry Pauley (absent).

Varsity Schedule

Football 1955

Morningside....39	Nebraska Wesleyan... 7
Morningside.... 0	Omaha University....34
Morningside....26	North Dakota St..... 7
Morningside....13	North Dakota U..... 7
Morningside....40	Augustana College.... 7
Morningside.... 0	South Dakota U.....14
Morningside....12	Iowa State Teachers...13
Morningside....21	South Dakota St.....21

Football 1955

Morningside finished a good third place in the 1955 NCC conference with a 3-2-1 record. In conference play, the Maroons showed up well under the first-year coaches. Already they are pointing for a better 1956 finish to be aided by an improved schedule. Although they did not win their second championship in a row, still the college has every reason to be proud of its team, its coaches, and its record for the year. Followers can be proud of the character of every man and look with an eye to 1956, proclaiming, "Wait 'till net year!"



Don Protextor



Dewey Halford



Jack Jennett



Dick Clements
Most Improved Player Trophy

1955 Lettermen

Rusty Mohler
Vern Wyland
Al Lindgren
Ron Fredricksen
Larry Johnson
Cliff Hinrichs
Jim Welton
Darold Puff
Ken Bohlke
Dutch Bryan
Dan Emmerson

1955 Lettermen

Bob Buckley
Ray Clark
Buddy Mounts
Chuck Phenix
Vince Arioso
Bob Puff
Bob Reynders
Red Getting
Terry Lewis
Bob Meinhardt
Tom Tooley
Jim Hindman

Graduating Maroons
... Wyland, Lindgren, Thomas, D. Puff,
Welton, Clark, Meinhardt, Buckley,
Hove (absent) ...



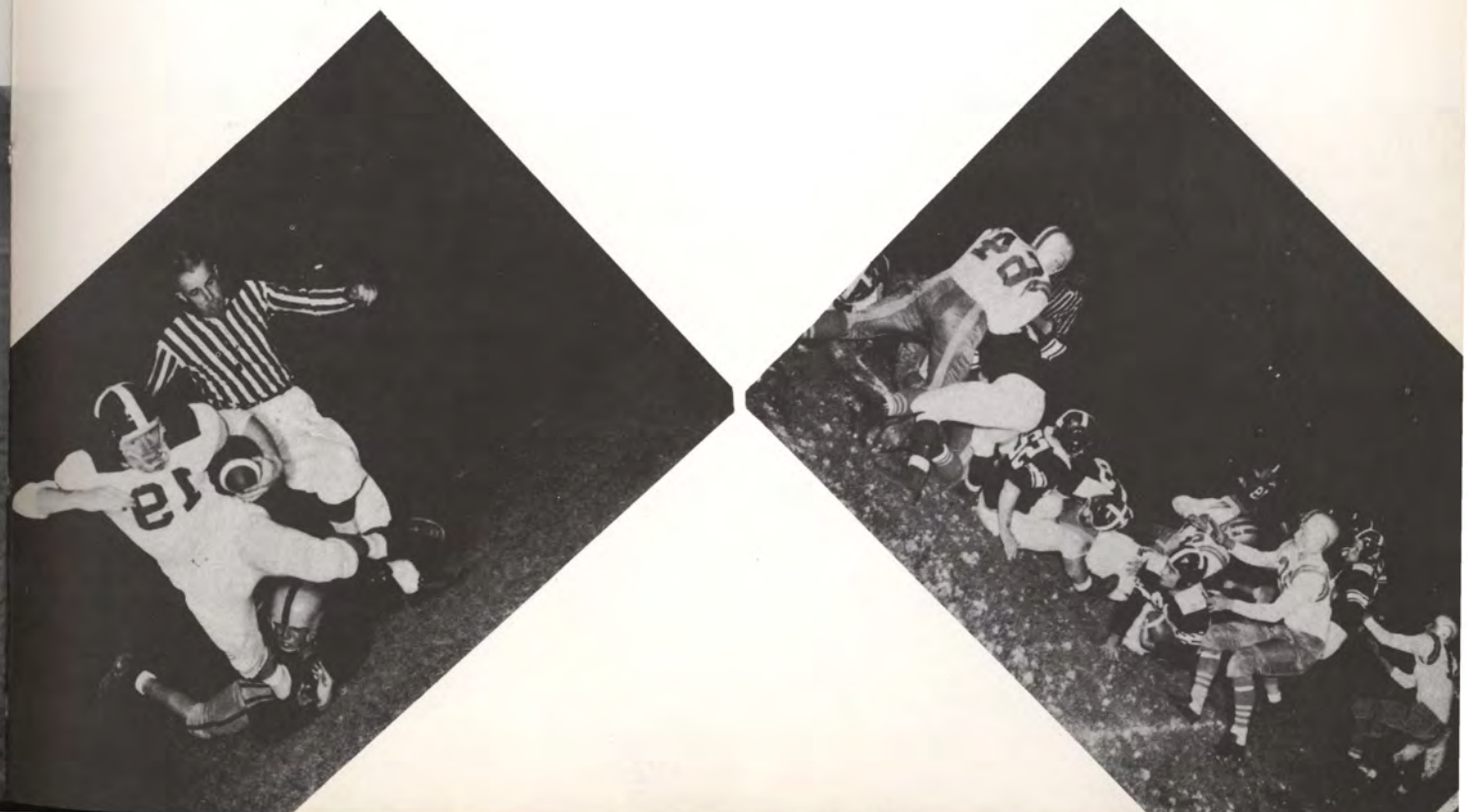


First row: Calvert, Morris, Hall, Phillips, Pitstick, Smith, Rasmussen, Puff; second row: Black, Mitchell, Guillaume, Curry, Murry, Rhead, Hass, Gisel, Bill L. Davis, Larry Davis; third row: Leonard Schanke, Poortinga, Suter, Keiller, Grosbeck, Sievers, Larson, Lorenzen, Getting, Woolston; left side: head coach Don Protextor; right side: assistant coach Dave Van Vleet.

Freshmen Schedule

Morningside.....28	Westmar	7
Morningside.....13	South Dakota U.....	14
Morningside.....26	Augustana	6

Head coach Dewey Halford and co-captains Darold Puff and Vern Wyland.





Halloween Party

On the eve when all the ghosts and goblins are hovering near the earth, Dimmitt Hall plays hostess to them. The annual party displays fantastic costumes. Good laughs are provided by skits which were judged by our beloved Mrs. Day, Mrs. Christ, and Miss Robison.



Agora Leadership Dinner

Each year Agora sponsors a leadership banquet which recognizes the officers of organizations and honors a distinguished woman. Mrs. Harley Farnham was our Woman of the Year.



Open House

Open houses at Dimmitt Hall helped to promote friendship. All students and faculty were invited to join in the evening's activities.



Play

"The Curious Savage" was the fall stage production presented by the Dept. of Speech and Dramatics during November. It was a hilarious comedy in three acts taking place in an institution for the mentally ill. At the moment of enactment the play seemed light and humorous, but with a few moments of thought the deeper side appeared. The undercurrent of the play was serious.

The cast portrayed the scenes marvelously well. We are proud to claim them for Morning-side College. Much of the success can be attributed to Dr. Jerry J. West, who directed and staged the production.

The cast of characters:

The guests:

Florence	-----	Maryann Murphy
Hannibal	-----	Gene Dymkowski
Fairy May	-----	Coleen Neilsen
Jeffrey	-----	George Hawks
Mrs. Paddy	-----	Sally Lease

The Family:

Titus	-----	Tom Johnsrud
Samuel	-----	Keith Tandy
Lily Belle	-----	Beth Weisensee
Ethel	-----	Gene Hays

The Staff:

Miss Wildemina	-----	Jane Anderson
Doctor Emmett	-----	Al Anderson

In the Tableaux:

John Thomas	-----	Rex T. Johnsrud
-------------	-------	-----------------

Faculty Reception



The faculty sponsored their annual reception in Dimmitt Hall. This was a pleasant way to meet the faculty and their wives. The reception was followed by a dance which was enjoyed by all.





Christmas Formal

At Christmas time the annual party was held to decorate Dimmitt Hall. Wreaths were placed in the windows of the drawing room by the senior girls. Happiness and joy indeed reigned over this occasion.

Christmas Decorating Party



Christmas Concert

The Christmas Formal and the Christmas Concert rang a note of holiday festivities on the campus.





Del Shultz, Bob Reimers, Bill Barrett, Gary Kreykes, Dick Yates, Bob Meyer, Gary Hulst, Keith Warner, Jerry Starkweather, Doug Delzell, Paul Noble, Ken DeVries, Bob Reynders, Don Popen, Dick Muir. Coach Buckingham in front.

Morningside Maroons 1955-56



Co-captains Paul Noble and Keith Warner



Coach A. W. Buckingham

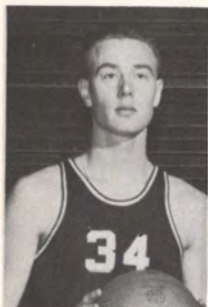




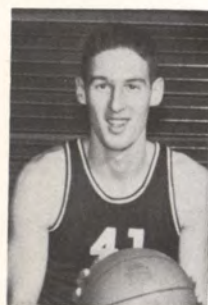
Dick Muir



Dan Emmerson



Gary Hulst



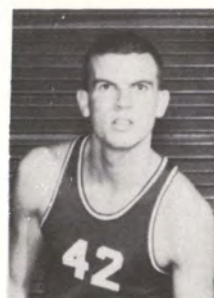
Bill Barrett



Ken DeVries



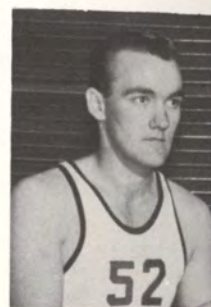
Norm Falk



Doug Delzell



Jim Erwin



Gary Erwin

MEN OF

Nov. 26—M'side, 101; Westmar, 96.
Dec. 3—M'side, 79; St. Cloud, 72.
Dec. 5—M'side, 44; Creighton, 59.
Dec. 6—M'side, 92; Nebraska Wesleyan, 74.
Dec. 10—M'side, 75; Eastern Illinois, 89.
Dec. 12—M'side, 72; Georgia State, 91.
Dec. 16—M'side, 83; Florida State, 104.
Jan. 6—M'side, 61; No. Dakota, 69.
Jan. 7—M'side, 68; No. Dakota State, 73.
Jan. 14—M'side, 67; No. Dakota State, 76.
Jan. 20—M'side, 69; Westmar, 101.

Jan. 25—M'side, 69; S. D. State, 90.
Jan. 28—M'side, 58; S. D. U., 63.
Feb. 3—M'side, 81; N. D. U., 85.
Feb. 6—M'side, 83; Omaha U, 81.
Feb. 10—M'side, 67; I.S.T.C., 81.
Feb. 10—M'side, 67; 0.
Feb. 14—M'side, 82; S. D. State, 101.
Feb. 18—M'side, 68; Augustana, 63.
Feb. 22—M'side, 62; Augustana, 55.
Feb. 25—M'side, 79; I.S.T.C., 88.
Mar. 3—M'side, 67; S. D. U., 94.



Paul Noble



Jerry Starkweather

THE "M"



Del Shultz



Keith Shellhammer



Don Poppen



Bob Reimers



Dick Yates



Keith Warner



Bob Reynders



1956 Track Schedule

April 19—Wayne Teachers -----There
 April 28—Drake -----There
 May 3—Omaha U. -----Here
 May 7—Westmar -----Here
 May 15—Omaha U. -----There
 May 18—North Central Conference

April 14 -----Triangular
 April 20 -----Quadrangular
 April 28 -----Drake Relays
 May 1 -----Doane Relays
 May 4 -----Sioux Relays
 May 5 -----Dakota Relays
 May 11 -----Quadrangular
 May 19 North Central Conference meet

John Kopecky, Bob Meyer, Don Poppen, Dick Muir, Don Wigersma, Duane Calvert.

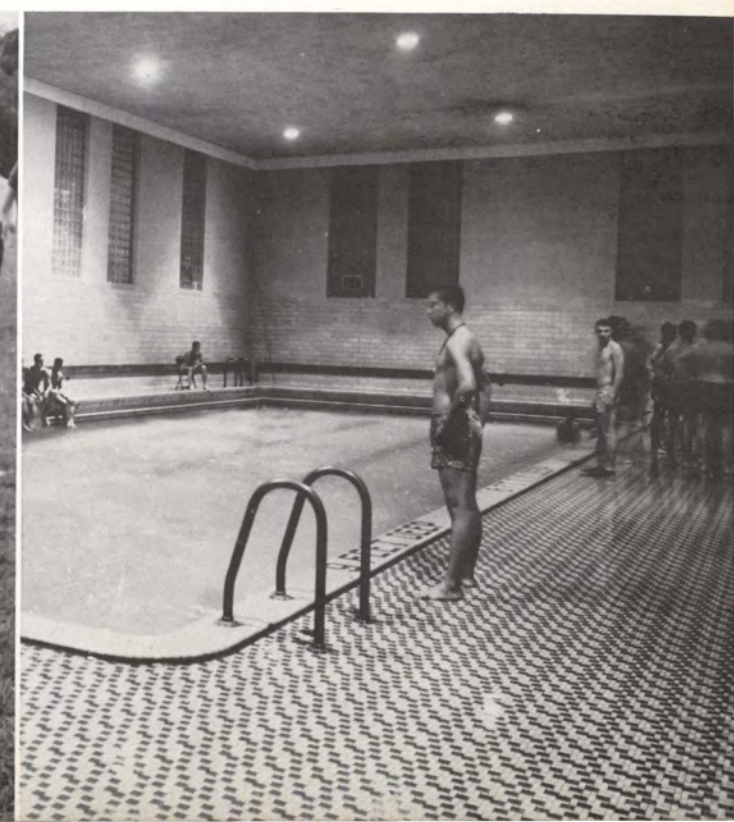




Gay Lane's 16 beautiful alleys provided the scene for the first all-college bowling competition. Fifteen teams and a crowd of onlookers presented an impressive turnout for the tournament, sponsored by the college weekly publication, The Collegian Reporter.



1955 Intramurals





One of the busiest weeks on campus was this week when a speaker was brought in to help us grow spiritually. The theme of the week was "What on Earth are you doing?" Dr. John McGee was our guest. Special chapels, discussion groups, and fireside chats created much interest. With these contacts growth spiritually was inspired.

Miss Dimmitt's Birthday Party

Each year we honor our Dean of Women Emeritus, Miss Lillian E. Dimmitt at a dinner party in the season of her birthday. This is to celebrate all the girls' birthdays, too. A special "This is your life" skit was prepared to honor Miss Dimmitt's many years of service.



Religion-In-Life-Week





Queen Of Hearts Dance

The Queen of Hearts was sponsored by Agora. All the fellows attending the dance were asked to cast their ballot for queen. Beth Weisensee reigned during the evening and was the "Sweetheart of the Evening."



Sinfonian Inn

Phi Mu Epsilon headed for Shore Acres in March. The music encouraged collegians to put on their dancing shoes. Memory brings back these familiar words. "Go Man" "Way Out" "Crazy." It was a spectacular event.



Teke Talent Show

The 1st Annual Teke talent show succeeded the annual Phi Sig talent shows. Talent, Talent, Talent of colleges and high schools was presented and well received. Even after the applause meter decision had been announced a bigger event took place. A This is Your Life program for Dr. Roadman was the theme. Personages connected with our President for the past 20 years were included. Don Stone from KVTW was MC.



M. E. B. O. C.

A special leap year dance was sponsored by the student council. The Most Eligible Batchelor on Campus was chosen by the popular vote of the girls from various candidates supported by women's groups. Mrs. Paulk, house mother of the Men's Residence Hall crowned Bob Reynders the Meboc of the year.

Agora Carnival

An event which is very informal is the Agora Carnival. Most groups on campus sponsor booths which provide good laughs and entertainment. A sock hop and the crowning of Kermit Fountain and Marilyn Zublow as the "Rowdiest Rogues" succeeded the carnival.



Spring Play



Dorm Formal

The Cast:

Harpagon, the miser.....	Wayne David
Elise, his daughter.....	Jane Anderson
Cleante, his son.....	Gene Dymkowski
Valere, in love with Elise.....	Al Anderson
Frosine, a matchmaker.....	Coleen Nielsen
Mariane, in love with Cleante.....	Penny Gumz
Master Jacques, coachman and cook.....	John Wold
La Fleche, Cleante's valet.....	Gene Quilleash
Master Simon, Harpagon's agent.....	Reverdy Mace
Magistrate	Tom Johnsrud
Mistress Calude.....	Sally Lease
Brindavoine	Kay Haugen
La Merluche.....	Nancy Mackintosh
Monsieur Anselme, Valere's father.....	Bud Hoffman
Servant	Tom Maxwell

The big night at Dimmitt Hall was the formal dinner dance. After dinner open house was held, with the fellows giving the rooms a white glove inspection. Dancing in the highly decorated dining room was the climax of the evening.



Wayne David gave himself completely to be the "Miser" in the play by that name which was adapted from Moliere. Supporting this major role were many other collegians who did excellent jobs.

Being a production first staged back in the old days the costuming was difficult but exquisite costumes were procured and worn.

Dr. West should be given a fine nod of approval for directing and producing such a pleasing play.





Club A. T. D.

The Sigma Phi Epsilon Fraternity sponsors two evenings of dancing. Good music and a special floor show were the high points of the dance. It was one of the largest dances of the year, being held in the Municipal Auditorium.



Science Exposition

These evenings provide a time when the minds of the scientists can show their ingenuity. Displays, experiments and various special items of interest are worked out for this exhibit. Many pains go into the planning, but when the nice comments are made during the evenings the efforts are well reimbursed.





Walk-Out Day

At the sound of the trumpet under Don Templeton's unique touch students came dashing from their classes and activities to join in on the declared hooky day. Campaigning for Student Council, monument relays and a picnic were all included in the day's activities.

The evening was also full of activity with a dance and the crowning of the May Queen, a freshman girl.



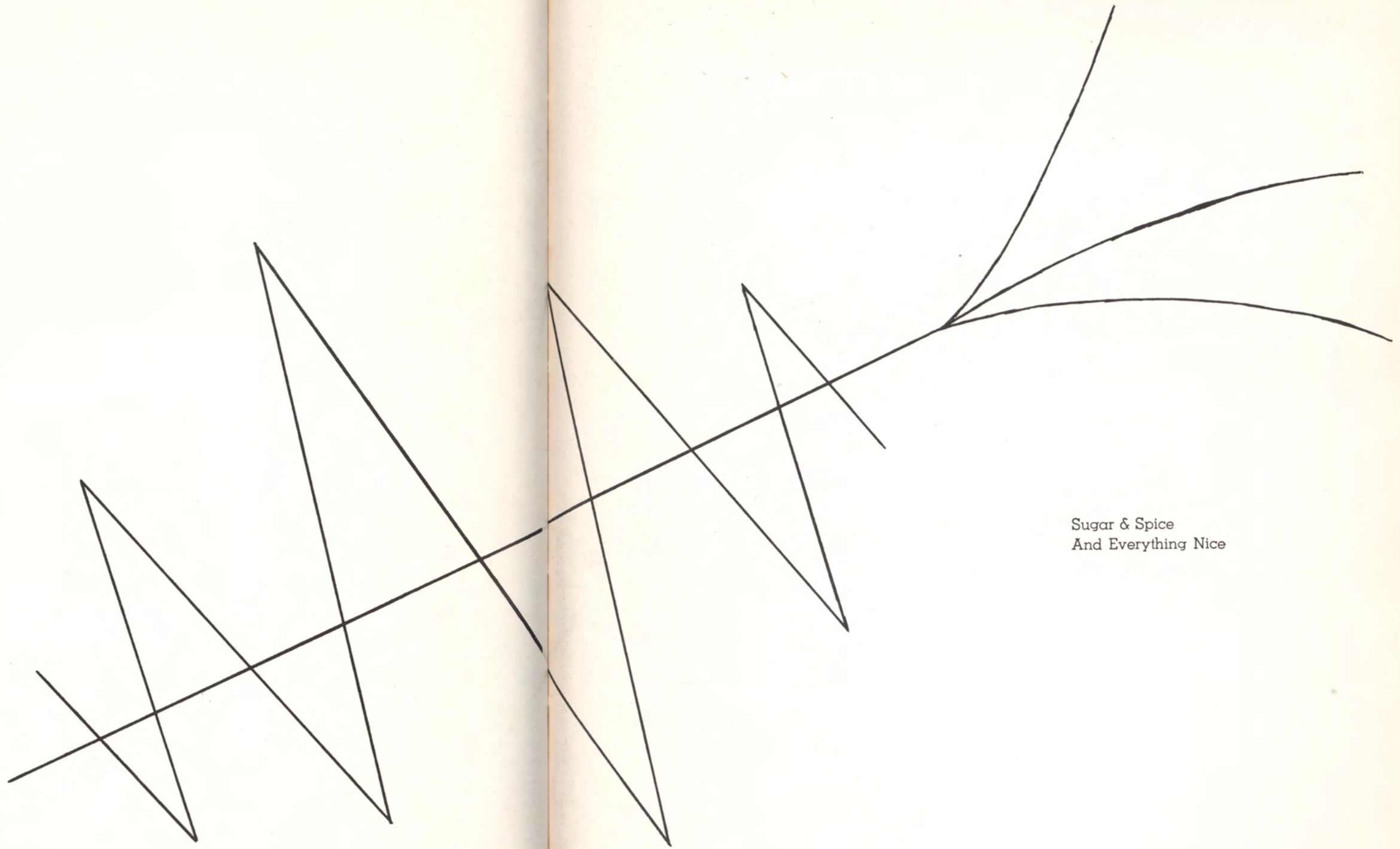
Mother-Daughter Banquet

Devotion and love for our Mothers was shown in a small way through the banquet held at the Mayfair Hotel sponsored by Agora. The Mother of the year gave us a worthwhile talk. The Agora board and the dorm president election results were also revealed. Though our tributes are small our hearts hold great love for these wonderful women, our Mothers.



Ishkoodah Convocation

The freshman girls' organization, Ishkoodah, planned and presented an Irish Minstrel Show the morning before St. Patrick's Day. It seems that the freshmen this year have lots of talent and they are willing to share it. Our hats are off to you for a fine convocation program.



Sugar & Spice
And Everything Nice



IOWA STATE COLLEGE
OF AGRICULTURE AND MECHANIC ARTS
AMES, IOWA
April 25, 1956

Miss Patricia Thacker
3318 Vine Avenue
Sioux City 6, Iowa

Dear Miss Thacker:

It is never an easy assignment to judge a beauty contest --and the selection of the Sioux Queen was especially challenging because so much loveliness was crowded into the space of such a relatively few pictures.

Naturally, one judge's selection of the Queen may well be challenged by others; in this very interesting and pleasant task I was guided by considerations which I believe are sound and appropriate.

Beauty--Beauty of face and form; and the inner beauty that radiates from the countenance, often difficult of precise description, but quickly discernible and definitely impressive.

Personality--A trait, again almost impossible of clear definition, which inspires confidence, which offers evidence of actual or potential leadership, and which in the best sense of the word inspires warm and lasting friendships.

Poise and Charm--The shining hall-marks of a lovely woman, the distinguishing characteristics of high intellectual, ethical and spiritual attainments.

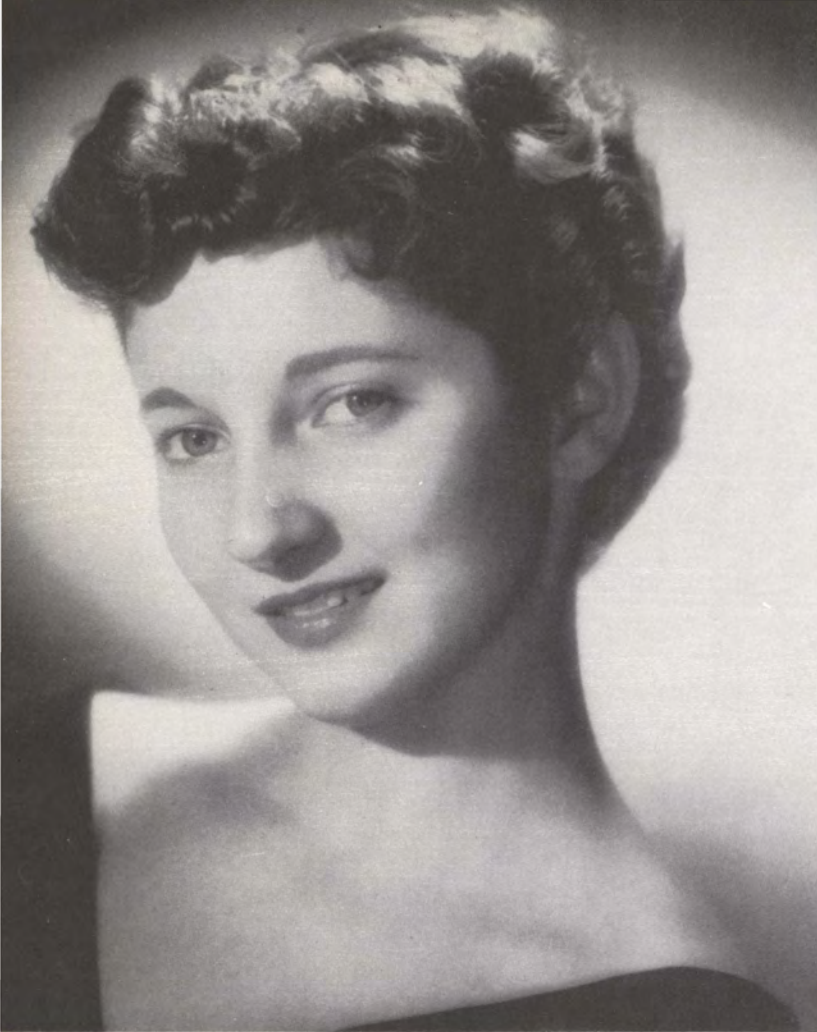
And the four attendants may well be included in these considerations.

Sincerely yours,

Charles E. Friley
Charles E. Friley
President Emeritus



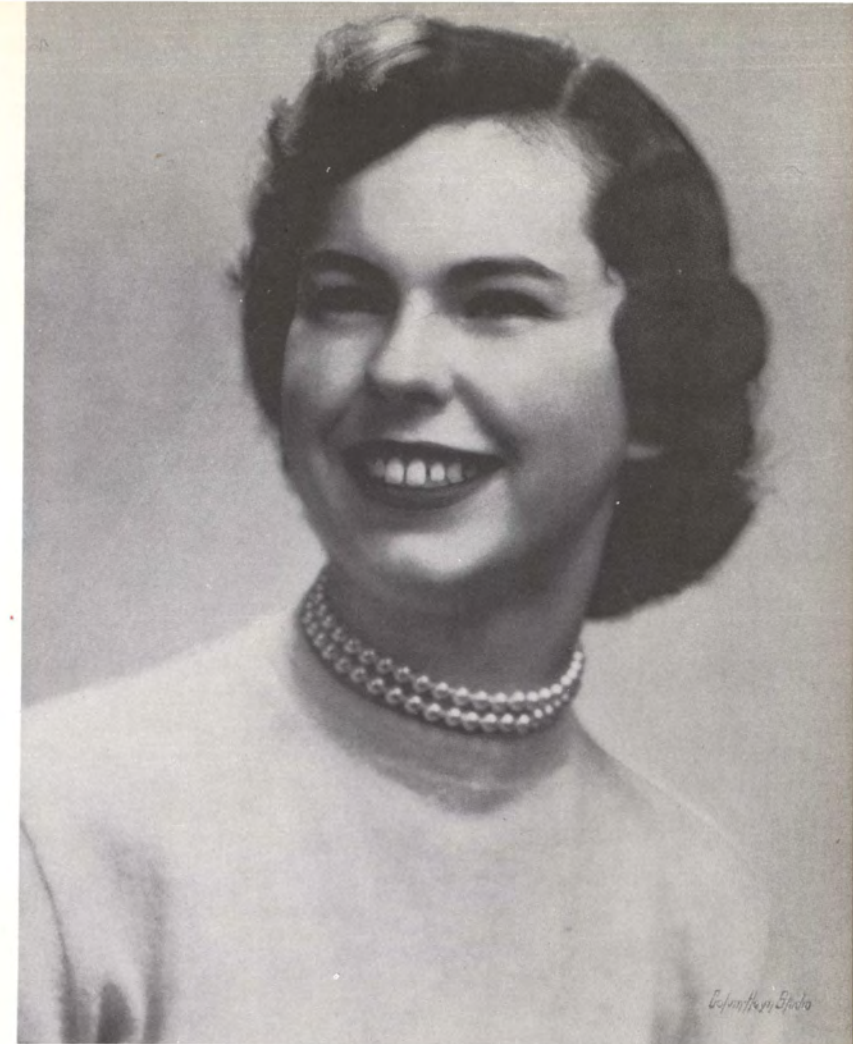
Sioux Queen
Jane Anderson



Attendants

Kaye Quackenbush

Beth Billiard



Lucy Yoshioka



Barbara Palmer



Homecoming Queen
Lucy Yoshioka



Attendants

Marilyn Reynders

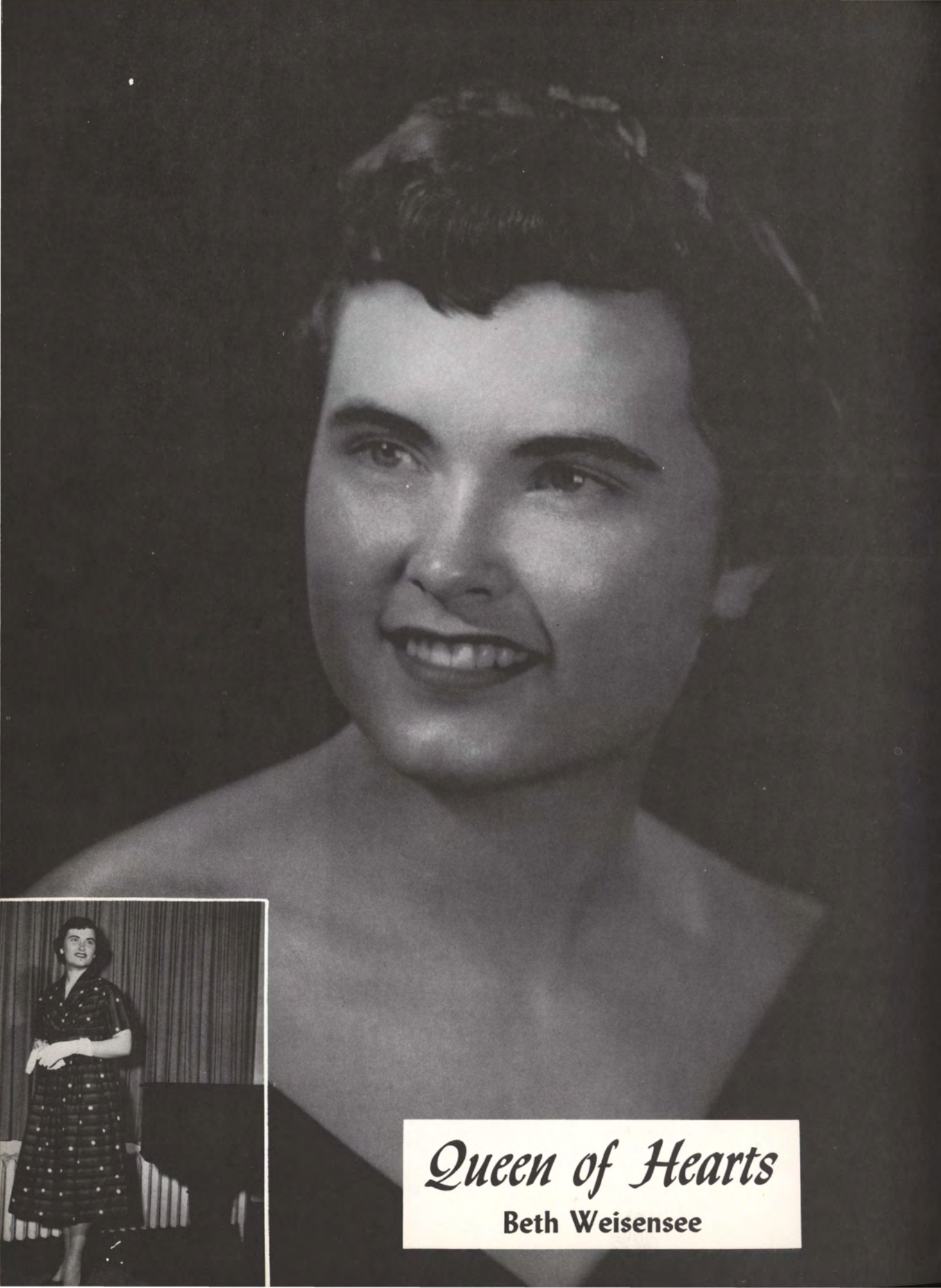


Raye Cottington



Georgia Hix





Queen of Hearts

Beth Weisensee



Sharon Rol

Attendants

Masel Meinhardt



Judy Grau



Mabel Long





Delta Sig Sweetheart
Shirley Aalseth

Sig Ep Sweetheart

Marilyn Reynders



Teke Sweetheart

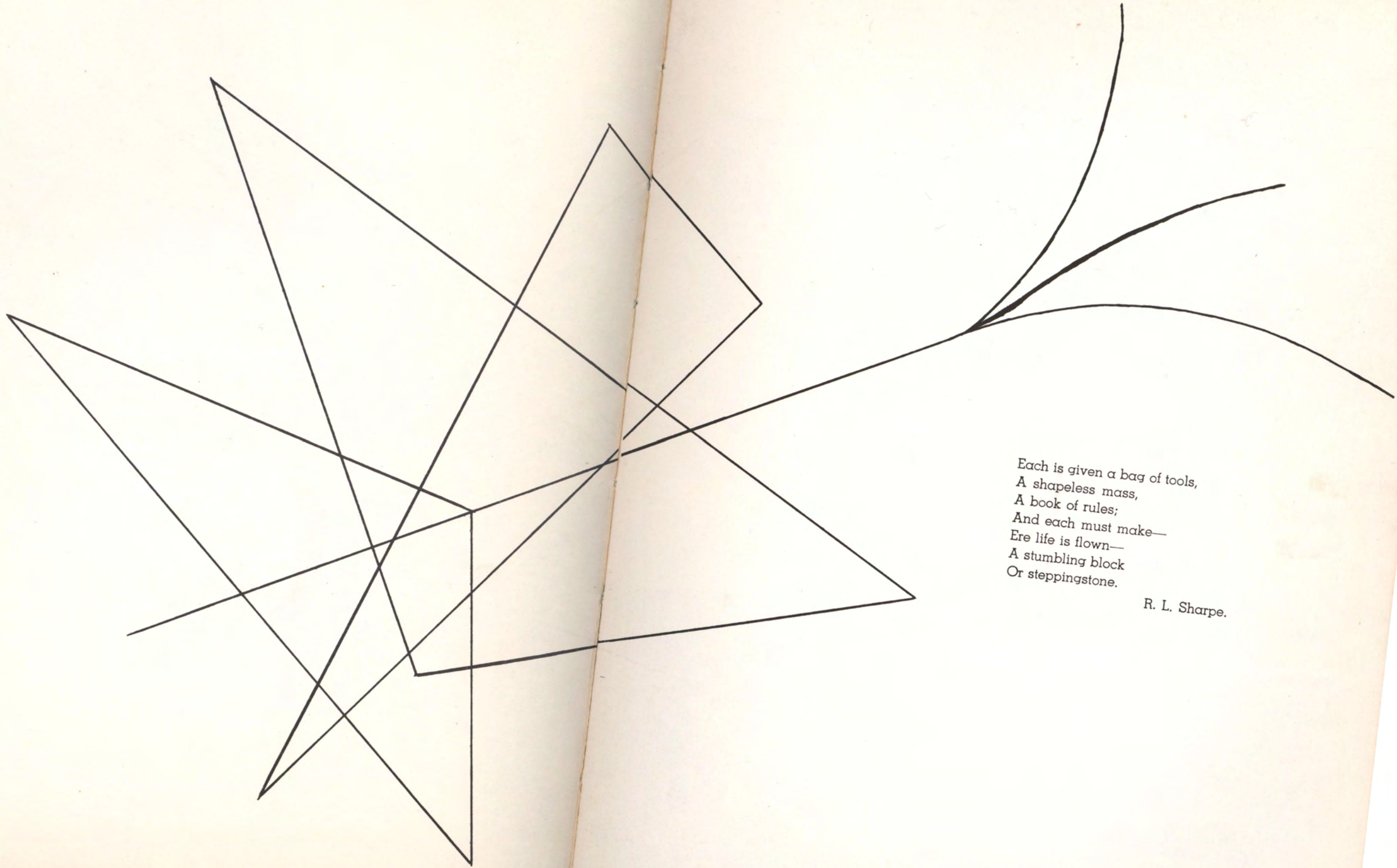
Pat Morehead



May Queen
Mary Lou O'Connor



Attendants
Carolyn Meyer
Janis Seggerman
Coleen Nielsen
Kay Love
Audrey Smeins



Each is given a bag of tools,
A shapeless mass,
A book of rules;
And each must make—
Ere life is flown—
A stumbling block
Or steppingstone.

R. L. Sharpe.



The Sioux

Under the direction of Pat Thacker the "Sioux" staff spent many hours trying to plan and prepare this annual. Many unique ideas have been forthcoming. We are proud to present this annual to you.

The Collegian Reporter

The Collegian Reporter was published weekly this year, giving coverage to campus highlights. The student editors had control of the material used, advertising and editorial policy.

To head the work was Dick Metcalf and Kent Watkins. This publication has done a fine job of presenting college events as they happened.



Who's Who

Left to right, back row: Russ Klay, Jean Arndt, Dona Kargas, Georgia Hix, Bev Johnson, Mabel Long, Jack Pommrehn, Don Templeton. First row: Charles Krusenstjerna, Don Wigersma, Vern Wyland, Dick Welding, John Hantla, Don Eilers.



Outstanding senior students on the campus were selected to represent Morningside College. These persons have been active in campus life and activity. We are proud to claim these young people as a part of our college.



Student Council

Left to right, back row: Gene Wulf, Don Wigersma, Dave Leonard, Dr. Walsh, Mr. Morrison. Second row: Don Poppen, Beth Weisensee, Masel Meinhardt, Marilyn Reynders, Carolyn Heaton. First row: John Wold, Bev Giehm, Mary Ann Hoffman, Don Templeton.



Men's Dorm Council

Left to right, seated: Bruce Curtis, Loren Lorenzen, Doyle Hickok, Mrs. Paulk. Standing: Dean of Men Miles Tommeraasen, Dave Leonard, David Lohr.



Ishkoodah

Left to right: Kay Kas, Patsy Starr, Nancy Armstrong, Lu Ann Maasen, Maryann Murphy, Gay Schuldt, Doris Sadler. First row: Judy Hartman, Carolyn Meyers, Laurel Evans, Coleen Nielson, Judy Warren.

F. T. A.

Future Teachers of America

W. S. G. A.

Women's Self Governing Association

Left to right, seated: LaVonne Schroeder, Marilyn Haddock, Joanne Wilson. Seated: Jean Arndt, Bev Lindberg, Mary Ann Hoffman, Dixie Hobbs, Wassileh Khoury. Standing: Jane Arnold, Elaine Forsberg, Shirley Cox.



W. A. A.

Women's Athletic Association



— 90 —



Left to right, first row: Miss McNee, Elaine Forsberg, Phyllis Lebeck, Joanne Franzen, Marilyn Springer, Marilyn Reynders, Glenna Page, Carol Lehnus, Margene Schnell, Mary Musselman, Doris Yungshlager, Janet Thayer, Curt Hays, Connie Hove, Don Wigersma, Mr. Eidsmoe, Gordon Walter. Second row: Ruth Hauser, Lola Tinker, Liz Jensen, Pat Morehead, Joy Green, Donna Schirk, Marilyn Murray, Judy Grau, Kaye Fristad, Jo Bullard, Dianne Metz, Nancy Osgard, Jerry Starkweather. Third row: Norma Johnson, Donna Emmert, Raye Cottingham, Mabel Long, Charlotte Johnson, Shirley Lindgren, Mabel Meinhardt, Carol Hinde. Fourth row: Sharon Montgomery, Joan Creswell, JoAnn Kots, Bev Johnson, Elsie Johnston, Dona Kargas, Jean Arndt, LuAnn Maasen, Joyce Curtis, Jeanette Wester, Esther Hackett, Dorothy Drommer, Bob Meinhardt. Fourth row: Hyman Lubman, Jack Sweeney, Jim Welton, Darold Puff, Bob Reimers, John Ashton, Doug Delzell, Larry Johnson, Roy Peterson, Dick Wenham, Jack Powell.



— 91 —



Phi Mu Alpha

Mu Phi Epsilon



Choir

Left to right, first row: Marlene Gelder, Mabel Long, Esther Hackett, Mary Silzer, Elma Love, Karen Lindblade, Dick Anshutz, Dr. Robert Larson, Charles Krusenstjerna, Sondra Shield, Raye Cottingham, Connie Davies, Jane Arnold, Mary Ann Hoffman, Judy Dirks. Second row: Bev Mulhoff, Phyllis Ahrenstorf, Jean Arndt, Shirley Cox, Dona Kargas, Marlene Van Der Slood, Joyce Applegate, Jane Lockwood, Venona Rock, Sally Lease, Joyce Curtiss, Delores Kahl, Joyce Arnold, Georgia Hix, Penny Gumz.

Third row: Janice Sweet, Orlin Solberg, Glen Houpt, Bob McIntire, Dale Lange, Blaine Sprout, Kermit Peters, Bob Wigness, Delmar Graf, Don Riemersma, Bob Davis, Ron Haddock, Tony Klein, Sandra Sauvain. Fourth row: Roger Tuttle, Lou Reed, Tom Canfield, Darwin Larson, Paul Brower, Mike Ard, John Christiansen, Roger Linman, Gary Ritz, Lyle Sprout, Bob Wilson, Ron Roloff, Loren Tinkey.



Majorettes

Left to right: Connie Jones, Bev Calvert, Dianne Metz, Carol Hinde, Dorothy Drommer, Xenia Perez.

Cheerleaders



Inter-Fraternity Council

Left to right: Jack Pommrehn, Roy Peterson, Isa Majaj, Bob Moore, Jerry Koch, Dave Bogue, Jack Hall, Dave Van Vleet.
Seated: Don Poppen.



Inter-Sorority Council

Left to right, first row: Marilyn Reynders, Xenia Perez, Georgia Hix, Bev Johnson.
Second row: Mrs. Burris, Gretchen Jensen, Carol Hinde, Pat Morehead, Elsie Johnston, Marge Bauer. Standing: Miss Muller, Miss Northrup.



Agora Board

Left to right, first row: Barb Palmer, Joyce Arnold, Georgia Hix, Jean Arndt. Second row: Mrs. Burris, Elizabeth Jensen, Bev Johnson, Nancy Myers. Third row: Jane Beck, Sharon Montgomery, Marilyn Reynders, Beth Weisensee.





"M" Club



Pre-Engineers Club

Sigma Pi Sigma



Left to right: Frank Jettner, Mr. Gwinn, Bob Bachert, Curt Laughlin, Don Eilers.

Left to right, first row: Dorothy Wubben, Albert Okonkwo, Edgar Kourany, Oscar Kourany. Second row: Rod Larson, Dave Lohr, Dick Gasser, Mr. Nydegger, Mr. Montgomery, Fred Girard.





A. I. A.

Academic Investment Association

Left to right: Charles Rexroat, Leo Harris, Ray Foster, Bill Eberle, Lee Dallas. Right: Joe Smith, Gerald Krull, Tom Kronoveter, Dick Metcalf, Dean Tommercaasen, Mr. Liljegren, Robert Renfro.



M. S. F.

Methodist Student Fellowship

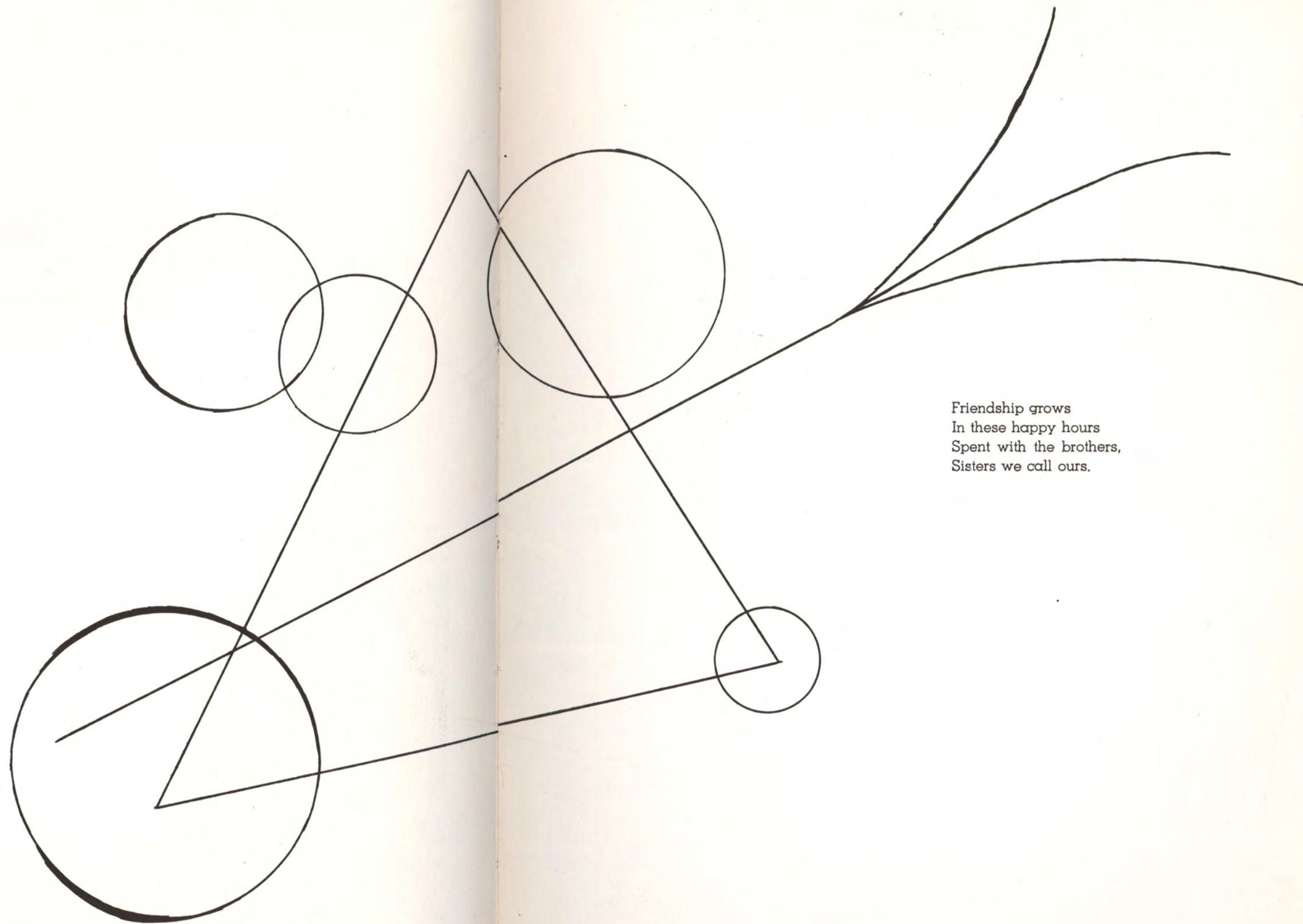
Kappa Chi

Left to right: Thane Treptow, Al Trucano, Delos Corderman, Ray Bailey, Reverdy Mace, Robert Ames, Roger Swanson. Second row: Dave Schuldt, Gene Cannaday, Jerry Smith, Bob Leverenz, Roger Tuttle, Lanny Tuttle. First row: Merilynn Jordan, Doris Sadler, Judy Hartman, Nancy Crary, Beverly Lindberg, Mary Ann Hoffman.

Home Ec Club

Left to right: Beth Billiard, Pat Wenzel, Pat Thacker, Gretchen Jensen, Mrs. Carlson, Margene Schnell, Pat Morehead, Alberta Seal, Karen Miller.





Friendship grows
In these happy hours
Spent with the brothers,
Sisters we call ours.

Alpha Sigma



OFFICERS

1st Semester

President.....Bev Johnson
 Vice President.....Georgia Hix
 Recording Secretary.....Jo Wilson
 Corresponding Secretary Xenia Perez
 Treasurer.....Nancy Waggoner
 Chaplain.....Wassileh Khoury
 Critic.....Joy Green
 Usher.....Betty Sykes
 Historian.....Shirley Aalseth
 Reporter.....Margaret Grant
 Pledgemaster.....Joy Green

2nd Semester

Georgia Hix
 Bev Johnson
 Marlys Kinnan
 Margaret Grant
 Shirley Aalseth
 Phyllis Ahrenstorff
 Donna Inderwich
 Betty Sykes
 Nancy Waggoner
 Joy Green

Not pictured: Shirley Aalseth, Wassileh Khoury, Marlys Kinnan, LuWonne Wulf, Marilyn Zablow.



P. Ahrenstorff M. Brower M. Grant J. Green



L. Grossenberg G. Hix D. Inderwich B. Johnson M. Jones X. Perez



E. Rock V. Rock B. Sykes — 102 — N. Waggoner J. Wilson J. Zortman

Delta Sig of the Year
 Jerry Koch



Delta Sigma Phi



OFFICERS

1st Semester

President.....Bob Larson
 Vice President.....Bob Moore
 Secretary.....Wendel Roth
 Treasurer.....Isa Majaj
 Sergeant at Arms...Willis Cleveland
 Chaplain.....Paul Jacobs

2nd Semester

Bob Moore
 Russell Bartels
 Hugh Waldier
 Jerry Koch
 Willis Cleveland
 Paul Jacobs

Not pictured: Jerry Koch, Vince McMahon, Phil McMahon, Bob Moore, Jack Erps, Kermit Fountain, James Gisel, Jim Hindman, Cliff Hinrichs, Ray Huibregtse, Arlo Jones, Don Kinnander, Delane Koch, John Lane, Bob McBurney, Larry McClury, Don McKillece, Jim McKelvey, Darrel Murray, Herb Peer, Sam Phelps, Keith Pitham, Bob Puff, Gordon Segelke, Harold Siebers.



R. Bartels



W. Cleveland



P. Jacobs



R. Larson



I. Majaj



C. Rasmus



W. Roth



B. Skaggs



D. Templeton



H. Waldier



J. Wold

Kappa Zeta Chi



OFFICERS

1st Semester	2nd Semester
President.....Adele Kirkpatrick	Marilyn Reynders
Vice President.....Marilyn Reynders	Marge Bauer
Treasurer.....Kaye Fristad	Kaye Fristad
Recording Secretary Marilyn Hennings	Connie Jones
Corresponding Sec...Dorothy Drommer	Judy Grau

Not Pictured: Kaye Quackenbush, Pat Smith, Fern Carnes, Marge Carlson, Carol Ferner, Marge McManamy, Sharon Strozdas.



Sig Ep of the Year Dave Van Vleet



Sigma Phi Epsilon



Not pictured: Fred Asher, Bill Beemer, Denver Birkhofer, Wayne David, Douglas Delzell, Kenneth DeVries, Gordon Dodge, Eugene Dymkowski, Robert Fladmark, Fred Girad, Robert Jassey, Thomas Johnsrud, Alvin Johnson, Judson Johnston, Dale Larson, Earl Logan, Pierre Lorenger, Peter Macfarlane, Jack Paulson, Eugene Rehder, Robert Reynders, Jack Rodgers, Ronald Sager, Arnold Schanke, Keith Shellhammer, Richard Stachouer, Dick Suiter, Harry Turner, James Warner, Fred Warren, Don Wigersma, Roger Winter, Gene Wulf, Keith Kading, Dick Daily, Patrick Daves, Larry Dingman, Jim Getting, Bob Gorsheck, Bud Hoffman, Glen Kading, Larry Kelting, Gary Kreykes, Roger Kysf, Duane Lange, John Locker, Loren Lorenzen, Bill Lymer, Tom Maxwell, Bob Molstad, Ron Morris, Lowell Roskam, Chet Strong, Clair Swan.



D. Archer



A. Boysen



P. Brower



D. Bogue



R. Buckley



R. DeVries



T. Gerkin



L. Hapke



T. Jenkinson



R. Kinwall



T. Kronoveter



A. Larsen



A. Lindgren



E. Mitchell



J. Parkhill



D. Poppen



R. Sheets



W. Shuck



L. Sprout



J. Starkweather



D. Van Vleet



D. Welding



F. Warren



R. Withoelter



D. Yappen

OFFICERS

1st Semester

President.....Dave Van Vleet
Vice President.....Don Poppen
Secretary.....Bill Beemer
Comptroller.....Don Archer
Sergeant at Arms.....Bob Jassey
Chaplain.....Doug Delzell

2nd Semester

Tom Gerkin
Bob Reynders
Larry Hapke
Tom Kronoveter
Tom Johnsrud
Jack Rodgers





Marilyn Alloway



Jean Arndt



Joyce Arnold



Kappa Pi Alpha



Jo Bullard



Beverly Calvert



Raye Cottington



Nancy Crary



Connie Davies



Judy Dirks



Elaine Forsberg



Jo Franzen



Beverly Giehm



Mary Ann Hoffman



Elizabeth Jense



Elsie Johnston



Dixie Kirkhart



Carol Lehnus



Carolyn Lewis



Shirley Lindgren



Helga Lund



Sharon Montgomery



Pat Morehead



Kay Mugge



Nancy Myers



Barbara Palmer



Marjorie Rowland



Donna Schirk



Marilyn Springe



Audrey Smeins



Patricia Thacker



Beth Weisensee



Lucy Yoshioka

— 110 —

Teke Of Year

Gil Ducommun



Officers

	1st Semester	2nd Semester
President.....	Elsie Johnston	Patricia Thacker
Vice President.....	Raye Cottington	Gretchen Jensen
Recording Secretary.....	Gretchen Jensen	Beverly Giehm
Corresponding Secretary.....	Joyce Arnold	Dixie Kirkhart
Treasurer.....	Pat Morehead	Elaine Forsberg
Critic.....	Elaine Forsberg	Elizabeth Jensen
Pledgemaster.....	Lucy Yoshioka	Barbara Palmer
Sergeant at Arms.....	Donna Schirk	Sharon Montgomery
Hall Chairman.....	Marilyn Springer	Shirley McGee
Chaplain.....	Elizabeth Jensen	Joyce Arnold
Reporter.....	Patricia Thacker	Pat Morehead
Librarian.....	Barbara Palmer	Marjorie Rowlands

Tau Kappa Epsilon



Officers



Albert Anderson



Richard Anshutz



Buddy Crewdson



Donald Ducommun



Gilbert Ducommun



Gordon Fountain



Keith Fry



Jack Hall



George Hawks



Leo Juffer



DeWitt Killam



Richard Metcalf



Roy Petersen



Stanley Peterson



Jack Pommrehn



Lou Reed



Gary Ritz



Jerome Smith



Blaine Sprout



Rodney Williams



Robert Tiemens

1st Semester

Prytanis.....Jack Pommrehn
Epipratanis.....Jack Hall
Grammateus.....Richard Gasser
Crysophylos.....Gilbert Ducommun
Histor.....Kent Watkins
Hypophetes.....Roy Peterson
Pylortes.....Marquette Mason
Hegemon.....Roger Cunningham

2nd Semester

Jack Pommrehn
Jack Hall
Richard Gasser
Gilbert Ducommun
Kent Watkins
Roy Peterson
Richard Wenham
Gordon Fountain

Ivan Winter, Chapter Advisor, David Reigel, Resident House Counselor. Faculty members: Albert Buckingham, Ira J. Gwinn, Wayne Liljgren, David Riegel, Earl A. Roadman.

Actives not pictured: Frank Baker, Robert Beyer, Grady Bluford, Thomas Canfield, Roger Cunningham, William DeJong, Richard Gasser, William Giehm, David Goodrich, Thomas Harris, Lee Hoffman, Richard Kock, Marquette Mason, Kermit Peters, John Powell, Kent Watkins, Richard Wenham, David Woods, LeRoy Zeising.



Spring Pledge Class



Retired Scholarship Trophy and new traveling trophy. Highest scholarship among fraternities for four consecutive years.






Big and Little Brother




Dr. E. A. Roadman signs the scroll and becomes the 80th initiate. Honie Rogers and Harry Olsen also became associate members.





To all unto whom these letters come, Greeting:
 Know Ye that by the authority of the Grand Chapter
 of **San Kappa Epsilon Fraternity**
 and in the furtherance of the purposes of the fraternity, a
 charter has been granted unto a Chapter of the Fraternity
 which is this day established at
Morningside College
 and known as **Delta-Sigma Chapter**
 which chapter, under this charter, is vested with all the Rights
 Powers, and Privileges conferred upon such chapters by
 the Constitution and Laws of the Fraternity, and subject
 to all the Limitations, Restrictions, and Obligations
 imposed thereby.

In testimony whereof, are hereunto affixed the signatures
 of the **Grand Officers** and the **Seal of the Fraternity**,
 this 27th day of **March** in the **Year of Our Lord, 1955**
 and of the **Fraternity** the 57th year:

	<i>John C. Logan</i> Grand Organist	<i>M. S. Elmer</i> Grand Organist	<i>Harry A. Miller</i> Grand Organist
<i>Richard E. Bassett</i> Grand Organist	<i>George H. Hawkes</i> Grand Organist	<i>Richard E. Bassett</i> Grand Organist	<i>George H. Hawkes</i> Grand Organist
<i>Richard E. Bassett</i> Grand Organist	<i>George H. Hawkes</i> Grand Organist	<i>Richard E. Bassett</i> Grand Organist	<i>George H. Hawkes</i> Grand Organist

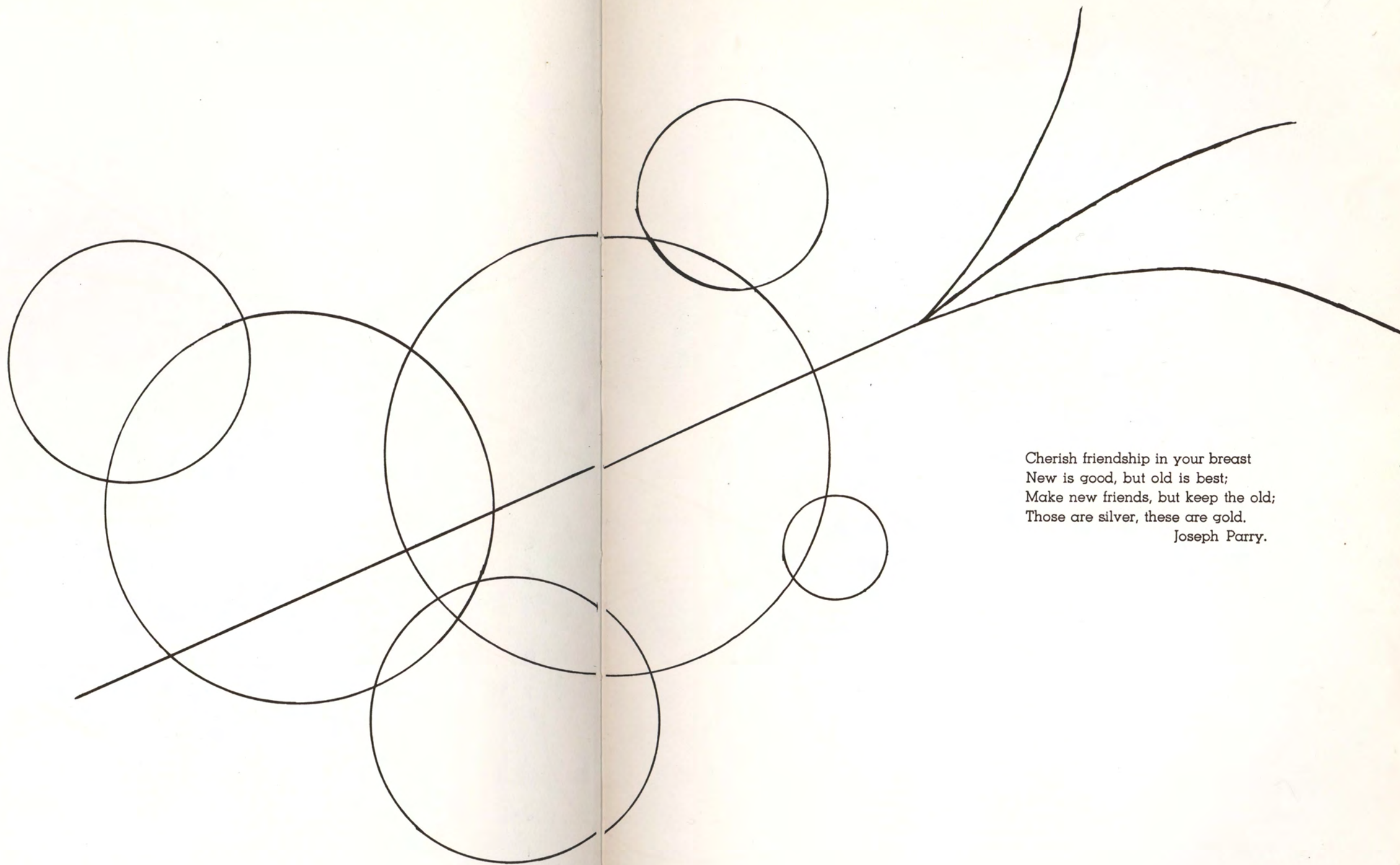
Richard E. Bassett
 Frank S. Baker, Jr.
 Fredrick W. Beck
 E. Robert Beck
 Roger E. Benson
 Robert E. Beyer
 Brady E. Bluford
 Santa D. Brooks
 Thomas W. Cairfield
 Buddy S. Crowdsom
 Eugene W. Crowdsom
 Louis A. Crowson
 Roger A. Cunningham
 William D. Davidson
 William E. Dodson
 Gilbert E. Duncanson
 Gordon W. Fountain

Richard E. Bassett
 David S. Asdorick
 Jack A. Hall
 John E. Harris
 George H. Hawkes
 Robert E. Kidwell
 Walter E. Koffman
 Leo P. Kuffer
 Richard F. Koch
 Wallace A. Krohn, Jr.
 William W. Co
 Marquette S. Mason
 Clifford A. Metcalf
 Marion E. Metcalf
 Richard W. Metcalf
 Donald W. Palmer
 Robert W. Parsons

Eugene H. Persinger
 Kenneth E. Peters
 Ray P. Peterson
 Douglas A. Pomeroy
 John S. Powell
 Jerome M. Surtis
 Blaine W. Sprout
 Richard W. Trowe
 Robert A. Trowe
 Royce W. Walker
 Terry S. Walker, Jr.
 David A. Watkins
 Richard S. Williams
 Rodney A. Williams
 Ronald M. Wilson
 William E. Wing
 David W. Woods
 P. Kenneth Young

TKE National Charter





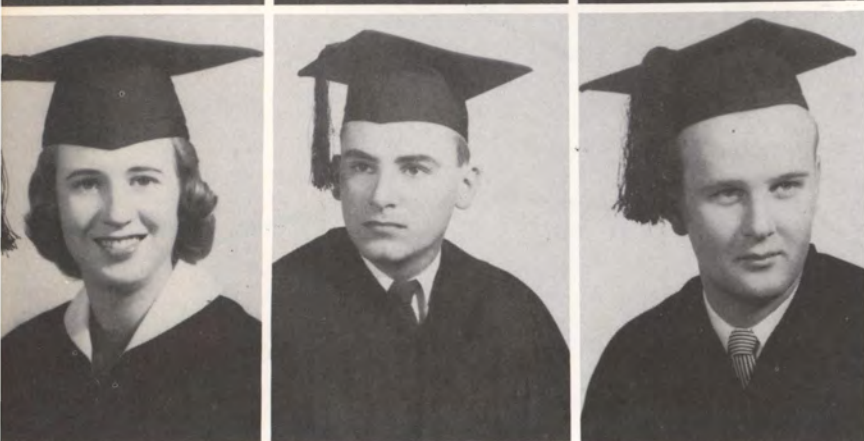
Cherish friendship in your breast
New is good, but old is best;
Make new friends, but keep the old;
Those are silver, these are gold.
Joseph Parry.



Jean Adele Arndt
Blencoe, Iowa

Robert Fredric Bachert
Sioux City, Iowa

Robert Lee Buckley
Sac City, Iowa



Diana Raye Cottington
Stratford, Iowa

Gordon Dodge
Hartley, Iowa

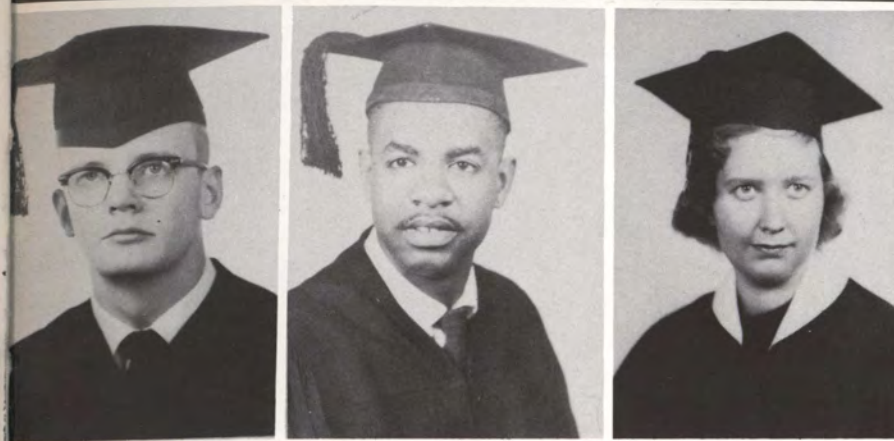
Gilbert L. Ducommun
Cleghorn, Iowa



Curtiss Leo Hayes
Sioux City, Iowa

Georgia Kay Hix
Odebolt, Iowa

Mary Ann Hoffman
Akron, Iowa



Gerald Alvin Huldeen
Odebolt, Iowa

Arthur D. Jackson
Sioux City, Iowa

Beverly June Johnson
Rockwell City, Iowa

Seniors

William H. Eberle
Sioux City, Iowa

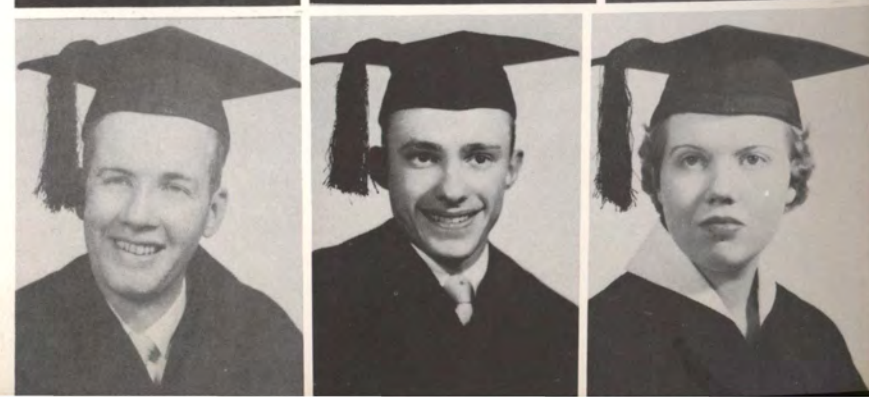
Donald Dick Eilers
Sioux City, Iowa

Chi Jen Feng
Formosa

Ray E. Foster
So. Sioux City, Nebraska

James Russell Frey
Sioux City, Iowa

Kathryn Faye Fristad
LeMars, Iowa



Elsie Shultz Johnston
Buffalo, Wyoming

Leo Dean Juffer
Ireton, Iowa

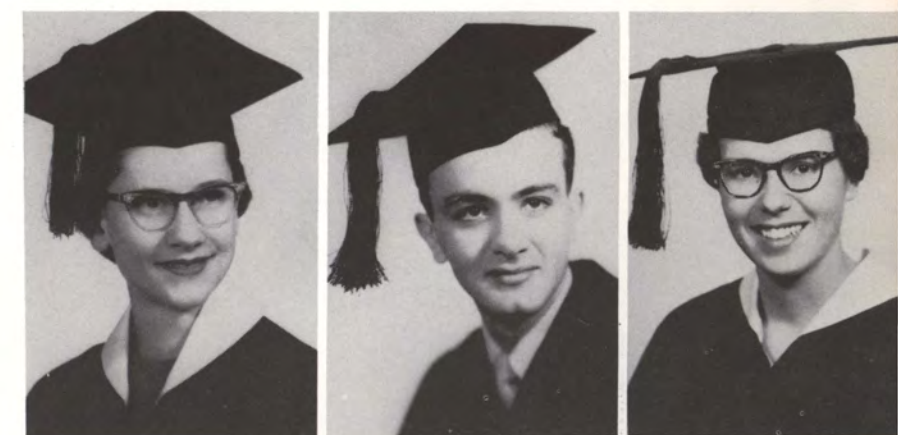
Dona Mae Kargas
Garner, Iowa

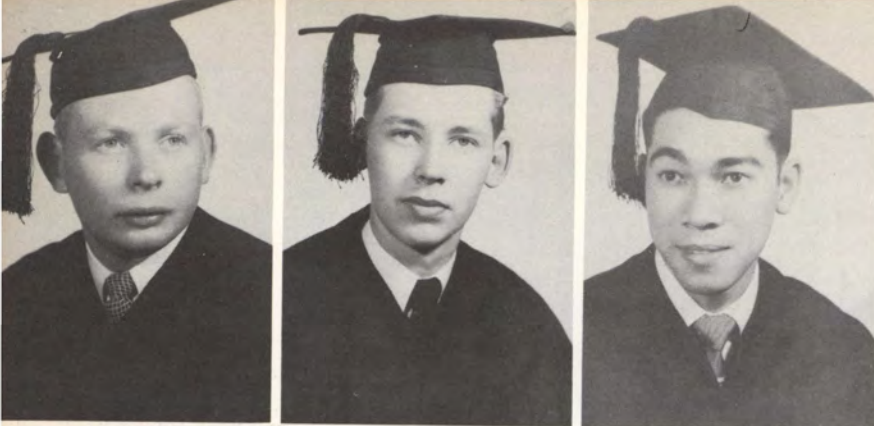
Adele Ann Kirkpatrick
Sioux City, Iowa

Russell D. Klay
Brookings, South Dakota

JoAnn Kots
Ireton, Iowa

Seniors





Adrian Christian Larsen
Sioux City, Iowa

Robert J. Larson
Sioux City, Iowa

Cesar Lay
Panama City, Panama



Allen Wayne Lindgren
Albert City, Iowa

Nancy Jane Lippert
Sioux City, Iowa

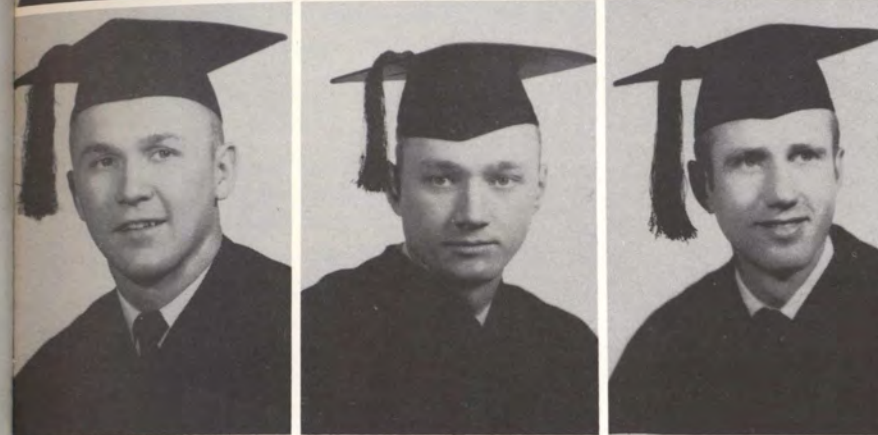
William Lo
Hong Kong, China



Albert Okonkwo
Ibusa, Nigeria

Mary Jane Tawney O'Meare
Sioux City, Iowa

Douglas Jack Pommrehn
Williams, Iowa



Darold Dean Puff
Rolfe, Iowa

Robert James Reimers
Inwood, Iowa

Charles Marion Rexroat
Sioux City, Iowa

Seniors

Mabel Helen Long
Akron, Iowa

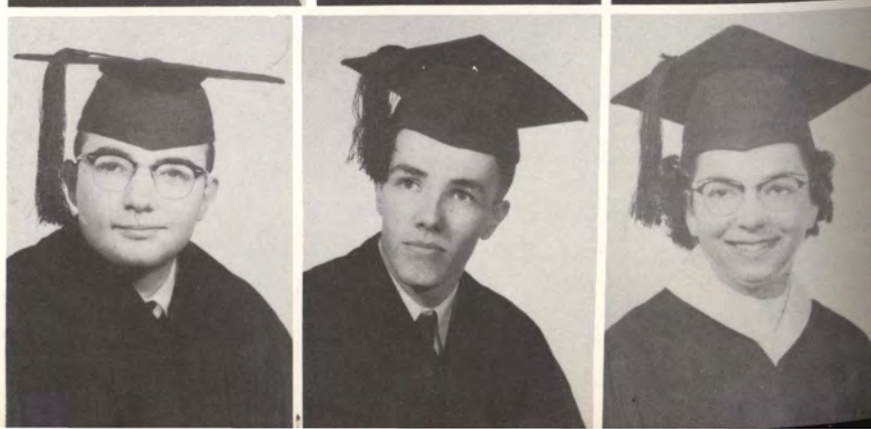
Hyman Lubman
Sioux City, Iowa

Robert J. Luse
Sioux City, Iowa

Nick George Margeas
Sioux City, Iowa

Roger Edwin Moore
Sioux City, Iowa

Mary Elizabeth Musselman
Sioux City, Iowa



Marilyn Mae Reynders
Sioux City, Iowa

Joseph Nicolet Schneiders
Sioux City, Iowa

Betty Bernece Sykes
Albert Lea, Minnesota

Don Richard Templeton
Bagley, Iowa

Patricia Annette Thacker
South Sioux City, Nebraska

John Hayden Thomas
Sioux City, Iowa



Seniors



William Evan Thomas
St. Louis, Missouri

Lola Mae Tinker
Sioux City, Iowa

David G. Van Vleet
Sioux City, Iowa

Richard Allen Welding
Sioux City, Iowa

Patricia Liebeler Wenzel
Langdon, North Dakota

Robert E. Wilson
Newton, Iowa

Seniors

Roger Harris Winter
Buffalo Center, Iowa

John Allan Wold
Elgin, Illinois

Vernon Richard Dewey Wyland
Onawa, Iowa

Lucy Seiko Yoshioka
Hilo, Hawaii



Senior Personalities JANUARY GRADUATES

Burleigh E. Boldt: B. S., Sigma Phi Epsilon

Phil Henkin: B. S.

Harry Holsclaw, Jr.: B.S.

John H. Thomas: B.S., Pre-engineers Club, Sigma Tau Delta, F.T.A., Band

Leona Bugge Chaffee: B.A.

Cydney J. Mason: B.A.

Mary Jane Tawney O'Meara: B.A., Kappa Zeta Chi, Cosmopolitan Club, Sigma Tau Delta, Alpha Xi Omega, Mu Phi Epsilon, Band, Choir, Agora Board

Armando R. Sardon: B.A., Cosmopolitan Club, Pres., Tennis team, Intramural & Inter-college, "M" Club, S.C.A., M.S.M.

JUNE GRADUATES

Theodore Jordan Anderson: B.A.

Jean Adele Arndt: B.M.E., Kappa Pi Alpha, Mu Phi Epsilon, Who's Who, F.T.A., Dorm President, Dorm Judiciary Board, Dorm Counselor, Agora Board, Freshmen Director, Choir, Band, Inter-Sorority Council

John C. Ashton: B.A., Academic Investment Association, F.T.A.

Denver D. Birkhofer: B.S., Sigma Phi Epsilon, Baseball, Student Council, Inter-Fraternity Council, "M" Club

Charles Henry Blumeyer: B.A.

Robert F. Bachert: B.S., Engineers Club, Sigma Pi Sigma

Robert Les Buckley: B.S.

Raymond Willard Clark: B.S., "M" Club, Football, All-Conference Guard, Track, Pres. Junior Class

Mrs. Louise Coover: B.A.

Harold Franklin Corkhill: B.S.

Diana Raye Cottington: B.M.E., Kappa Pi Alpha, Mu Phi Epsilon, Choir, Band, Chamber orchestra, Brass ensemble, Sioux City Symphony Orchestra, Agora, Ishkoodah, F.T.A., Dorm Counselor, C.R. Staff, Sec. Junior Class, Homecoming attendant, Queen of Hearts attendant, Mardi-gras attendant

Donald Surber Croston: B.A., Sigma Phi Epsilon, Football, Intramural volleyball and basketball

Leland Earl Dallas: B.S.

Mary Christine DeJong: B.S.

Abbie Leone Dilly: B.A.

Gordon Leroy Dodge: B.S.

Gilbert Louis Ducommun: B.A., Tau Kappa Epsilon, Band, Men's Dorm House Council, Student Council

William Henry Eberle: B.A.

Donald D. Eilers: B.S., Sigma Pi Sigma, Pre-Engineers Club Pres.

Chi Jen Feng: B.A., Chorus, Cosmopolitan Club, Public Speaking

Ray E. Foster: B.S.

James Russell Frey: B.A.

Kathryn Faye Fristad: B.A., Kappa Zeta Chi, F.T.A., Home Economics Club, Agora, Ishkoodah

Bertie Evelyn Hagberg: B.S.

John Paul Hantla: B.A.

Curtiss Leo Hayes: B.A., Sec. Senior Class, Debate Alternate, F.T.A., College Orator, Superior Rating

Georgia K. Hix: B.M.E., Alpha Sigma Pres., Mu Phi Epsilon, Agora Board, Dorm Counselor, Dorm Judiciary Board, F.T.A., Choir Soloist, Homecoming attendant, Who's Who, C.R. staff, Inter-sorority council, Band, Madrigal Singers, Choir

Mary Ann Hoffman: B.A., Kappa Pi Alpha, Student Council, Kappa Chi, M.S.M., Alpha Kappa Delta, Pi Gamma Mu Pres., Choir, W.S.G.A.

Conrad Lloyd Hove: B.S., Football, Baseball, Discussion and Debate, "M" Club, F.T.A., College Plays

Calvin Harold Hughes: B.A., Band, Choir

Arthur D. Jackson: B.A.

Beverly Johnson: B.A., Alpha Sigma Pres., Agora Pres., F.T.A., Inter-sorority Council, W.S.G.A., Choir, Band, Alpha Kappa Delta, Dorm Counselor, Who's Who

Philip E. Johnson: B.A.

Elsie Shultz Johnston: B.M.E., Kappa Pi Alpha Pres., Mu Phi Epsilon, Vice Pres. Dorm, House Council, Inter-sorority Council, C.R., Madrigal, Choir, Band, Phi Sigma Sweetheart, F.T.A.

Donna Mae Kargas: B.M.E., Kappa Zeta Chi, Mu Phi Epsilon, Who's Who, Dorm Counselor, W.S.G.A., Conservatory Advisory Committee, Band, Choir, Madrigal Singers, Choir soloist, C. R., Majorette, F.T.A., Ishkoodah, Agora

Wassileh Boulos Khoury: B.A., Alpha Sigma, Cosmopolitan Club, Biology Club

Adele Kirkpatrick Sorensen: B.A., Kappa Zeta Chi Pres., Sigma Tau Delta, Kappa Alpha Delta, Inter-Sorority Council, Ishkoodah

Russell D. Klay: B.A.

Jo Ann Vander Feen Kots: B.M.E., Mu Phi Epsilon, Alpha Sigma, Choir, Band

Adrian Christian Larsen: B.S., Sigma Phi Epsilon

Robert J. Larson: B.A., Delta Sigma Phi Pres., Band, Inter-Fraternity Council

Cesar Lay: B.A., Cosmopolitan Club, Pi Gamma Mu, Sigma Tau Delta

Allen Wayne Lindgren: B.S.

Nancy Jane Lippert: B.S., Alpha Kappa Delta

Earl Alonzo Logan: B.A.

Hyman Lubman: B.A.

Robert Joseph Luse: B.S., Tau Kappa Epsilon, Engineering Club, Academic Investment Association, Intermurals

Edward Ford Malone: B.S.

Mabel Helen Long: B.M.E., Alpha Sigma, Choir Pres., Band, Madrigal, Mu Phi Epsilon Pres., Agora Board, F.T.A., Dorm Council, Orchestra, Who's Who, Queen of Hearts Attendant, Conservatory Student Committee

Roger Edwin Moore: B.S.

Peter Grant Macfarlane: B.A.

Robert Meinhardt: B.S., Alpha Tau Delta, Football, "M" Club, F.T.A.

Paul E. Noble: B.S., Class Pres., Basketball Co-Captain

Albert O. Okonkwo: B.S., Beta Beta Beta Pres., Biology Club Pres., Chemistry Club, Cosmopolitan Club, Biology Lab Asst., Library Asst., Track, Inter-Science Council, Intramural Table Tennis

Wilma Byrl Phillips: B.A.

Douglas Jack Pommrehn: B.A., Tau Kappa Epsilon Pres., Inter-Fraternity Council, C.R., Religion-in-Life Committee, Intra-Murals

Darold D. Puff: B.A., Football Captain, "M" Club Pres., Baseball

Eugene A.H. Rehder: B.A., Sigma Phi Epsilon, "M" Club

Robert James Reimers: B.A., Delta Upsilon, Sigma Delta Tau, Basketball, Freshman Orientation Leader, Religion-in-Life Leader, University Choir

Charles Marion Rexroat: B.A., Academic Investment Association, Associate Member of Zeta Sigma

Marilyn Mae Reynders: B.S., Kappa Zeta Chi Pres., Alpha Psi Omega, Student Council, Senior Class Treas., Who's Who, F.T.A., Agora Board, Inter-Sorority

Orville L. Rysta:

Joseph Nicolet Schneiders: B.A., F.T.A., Zeta Sigma

Wendell R. Sherer: B.A.

Shirley Ann Spielman: B.A.

Gerald Stein: B.A.

Roger Kendall Swanson: B.A., M.S.F., Kappa Chi Pres., Sigma Tau Delta

Don Richard Templeton: B.S., Delta Sigma Phi, Student Council Pres., Academic Investment Assoc.

Richard James Tester: B.A.

Patricia Annette Thacker: B.A., Kappa Pi Alpha Pres., Home Ec Club Pres., Sioux Editor, F.T.A., Choir, Intersorority Council, Science Council, Soph & Jr. Class Officer, Agora, Ishkoodah

William Thomas: B.A., Football, "M" Club, Intermural Softball Championship Team Capt., Volleyball Team Capt.

David Grady Van Vleet: B.S.

Frances Charlene Voss: B.S.

Margaret Roanne Cooper Weaver: B.S.

James Lee Welton: B.S., Alpha Tau Delta, Football, Baseball, "M" Club, Men's Dorm Council, F.T.A.

Don Wigersma: B.S., Sigma Phi Epsilon, Capt. Golf Team, Student Council, Who's Who

Vernon Richard Dewey Wyland: B.S.

Doris Ruth Yungschlager: B.S., C.R. Staff, F.T.A., Delta Sigma Epsilon

Zean W. Zurcher: B.M.E.

Lucy Seiko Yoshioka: B.M.E., Kappa Pi Alpha, Mu Phi Epsilon, Conservatory Student Advisory Committee, F.T.A., Who's Who, Intersorority Council, Homecoming Queen, Choir, Band, Ishkoodah, Agora, M.S.M.

Lola Mae Graham Tinker: B.S., Alpha Kappa Delta

Patricia Liebeler Wenzel: B.A., Sigma Tau Delta, Home Ec Club, F.T.A.

Roger Winter: B.A., Sigma Phi Epsilon



M. Jane Anderson
Sioux City, Iowa

Coyla Jensen Andresen
Sioux City, Iowa

Richard Leland Anshutz
Sioux City, Iowa

Margie Kathleen Bauer
Englewood, Colorado

Catherine Jane Beck
Detroit, Michigan

Beth Billiard
Sioux City, Iowa

Juniors

John Kurtis Christiansen
Lohrville, Iowa

Willis Martin Cleveland
Sioux City, Iowa

Kenneth Jay DeVries
Sheldon, Iowa

Rodney Lee DeVries
Sheldon, Iowa

Douglas Ralph Dimick
Sioux City, Iowa

Roger Wesley Frank
Ruthven, Iowa



AUGUST GRADUATES

Roger M. Erickson: B.A., Pi Kappa Alpha, Sigma Tau Delta

Curtis D. Laughlin: B.S., Sigma Pi Sigma Pres.

Mary E. Musselman: B.A., F.T.A.



Thomas Scott Gerkin
Sioux City, Iowa

Beverly Ann Giehm
Sioux City, Iowa

Delmer Lester Graf
Houghton, South Dakota



Marilyn Erma Haddock
Hornick, Iowa

Jack A. Hall
Rockwell City, Iowa

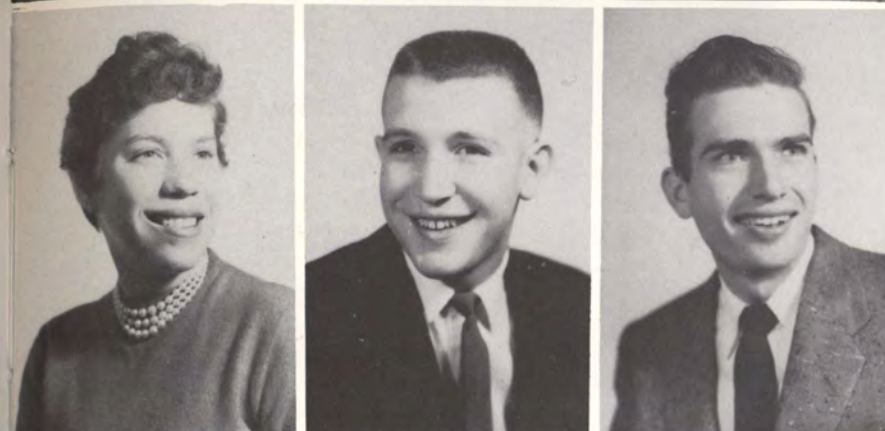
Donald Ray Hasbrook
Estherville, Iowa



Richard Warren Metcalf
Kingsley, Iowa

Sharon Lee Montgomery
Sioux City, Iowa

Patricia Jean Morehead
Akron, Iowa



Xenia A. Perez
Panama City, Panama

Don E. Poppen
Alton, Iowa

Ivan David Reed, Jr.
Spencer, Iowa

Juniors

Gretchen Carolyn Jensen
Sioux City, Iowa

Merilynn Ruth Jordan
Peterson, Iowa

Thomas Dean Kronoveter
Pipestone, Minnesota

David Elvin Leonard
Holstein, Iowa

Peirre Eugene Lorenger
Sioux City, Iowa

Isa J. Majaj
Jericho, Jordan



Fred Shalom Ron
Sioux City, Iowa

Wendell Lloyd Roth
Sioux City, Iowa

Joyce Arleen Runion
Dike, Iowa

Margene Schnell
Sac City, Iowa

Loretta Esther Scoville
Mitchell, South Dakota

Jerry Lee Starkweather
Boyden, Iowa



Juniors



Robert Kent Tiemens
Archer, Iowa

Donalyn Caryl Trenary
Pocahontas, Iowa

Mary Beth Weisensee
Sioux City, Iowa



John Thomas Williams
Milford, Iowa

Joanne Carolyn Wilson
Sac City, Iowa

Fred A. Zimmat, Jr.
Sioux City, Iowa



Russell LeRoy Bartels
South Sioux City, Nebraska

Shirley Esther Blair
Sioux City, Iowa

David Hilbert Bogue
Beresford, South Dakota



Roger Dean Bojens
Hartley, Iowa

Arthur Eugene Boysen
Havelock, Iowa

Daniel Lee Brower
Sibley, Iowa

Juniors

Aura Noemi Aguirre
Panama

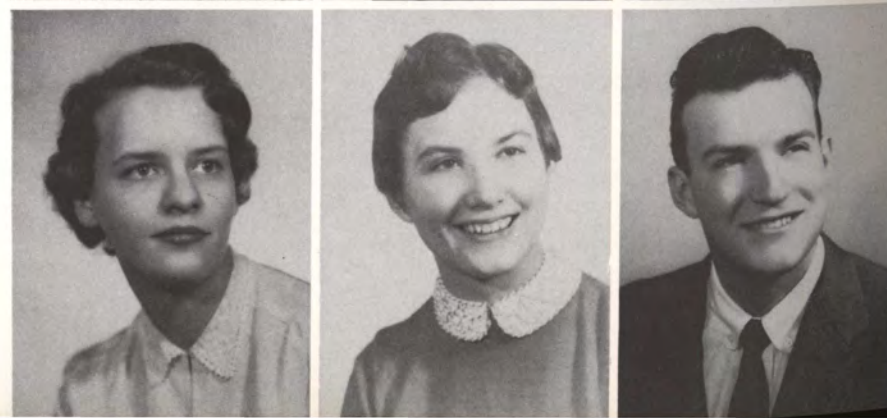
Phyllis Faye Ahrenstorff
Lake Park, Iowa

Donald Ray Archer
Rockwell City, Iowa

Lorna Lu Arneson
Sioux City, Iowa

Joyce Elaine Arnold
Newell, Iowa

Raymond James Bailey
Onawa, Iowa



Sophomores

Jo Ann Bullard
Jefferson, Iowa

Beverly Jean Calvert
Sioux City, Iowa

Buddy Gene Crewdson
Sioux City, Iowa

Dorothy Ann Drommer
Sioux City, Iowa

Carolyn Jean Ebel
Sioux City, Iowa

Charles Frank Ellison
Hinton, Iowa

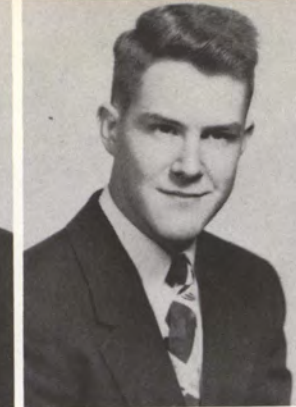




Virginia Elaine Forsberg
Cdebolt, Iowa

Gordon Fountain
Sloan, Iowa

Naomi Joanne Franzen
Sioux City, Iowa



Darlene Marie Froehlich
Cleghorn, Iowa

Margaret Elizabeth Grant
Spirit Lake, Iowa

Judith Ann Grau
Sioux City, Iowa



Joy Ann Green
Portsmouth, Iowa

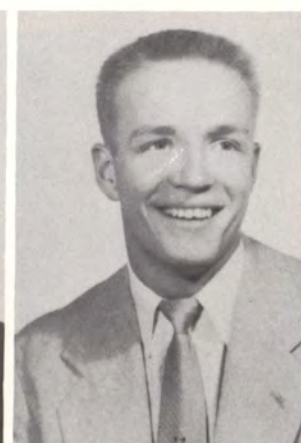
Lawrence Henry Hapke
Palatine, Illinois

George Albert Hawks
Washington, D. C.

M. Carolyn Heaton
Sioux City, Iowa

Marilyn Joan Hennings
Merville, Iowa

Carol Joyce Hinde
Early, Iowa



Marilyn Vie Jones
Sioux City, Iowa

Sine Marie Jorgensen
Sioux City, Iowa

Margaret Anne Jorstaa
Sioux City, Iowa



Ronald Dean Kindwall
Alta, Iowa

Dixie Jean Kirkhart
Sioux City, Iowa

Ward William Kowalke
Sioux City, Iowa

Donna Bea Inderwisch
Rock Rapids, Iowa

Paul Benjamin Jacobs
Sioux City, Iowa

Paul Henry Jenkinson
Sioux City, Iowa

Elizabeth J. Jensen
Harlan, Iowa

Larry Dean Johnson
Cherokee, Iowa

Connie Jones
Sioux City, Iowa



Sophomores

Sophomores





Carol Jean Lehnus
Rolle, Iowa

Shirley Cornelia Lindgren
Albert City, Iowa

David Claire Lohr
Churdan, Iowa



Charlotte E. Marzett
Sioux City, Iowa

Masel Ann Meinhardt
Mapleton, Iowa

Marilyn Menter
Sioux City, Iowa



Barbara Jean Palmer
Sioux City, Iowa

James Richard Parkhill
Sioux City, Iowa

Roy Peter Petersen
Marcus, Iowa



Venona Louise Rock
Pierson, Iowa

Marjorie Ann Rowlands
Sioux City, Iowa

Donna Mae Schirck
Carroll, Iowa

Sophomores

Dorothy Dianne Metz
Sutherland, Iowa

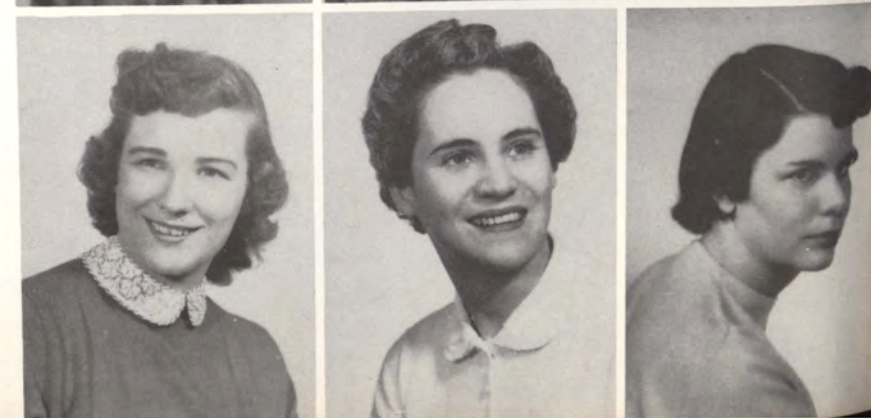
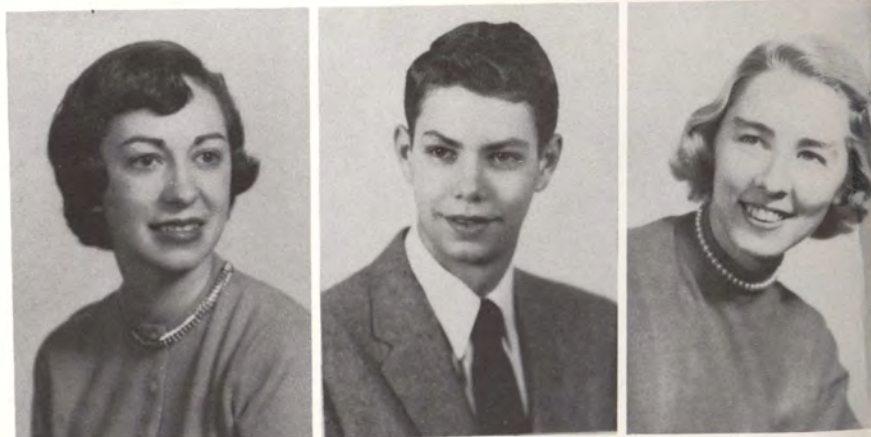
Ronald Royce Morris
Newton, Iowa

Eva Mouw
Sioux Center, Iowa

Norene Kay Mugge
Calumet, Iowa

Mary Ann Nation
Sioux City, Iowa

Glenna Glee Page
Kingsley, Iowa



Robert Emmett Sheets
Britt, Iowa

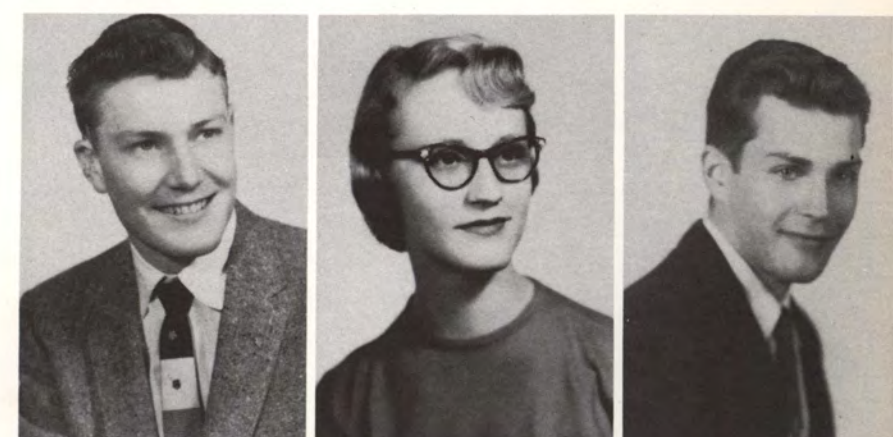
Sondra Sue Shields
Dickens, Iowa

Willis Elliott Shuck
Sioux City, Iowa

Janice Rae Smith
Sloan, Iowa

Jerome Malcolm Smith
Minneapolis, Minnesota

Marilyn Jean Springer
Cleghorn, Iowa



Sophomores



Blaine Willard Sprout
Cylinder, Iowa

Lyle Alan Sprout
Cylinder, Iowa

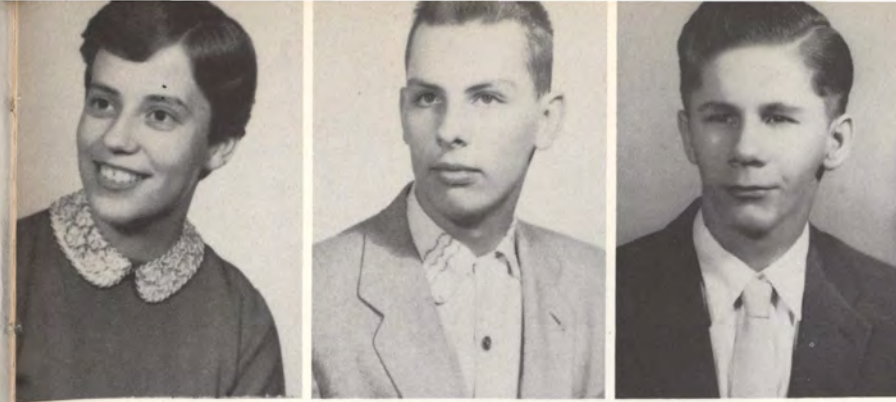
Ben William Stanislaw
Sioux City, Iowa



Alvin Eli Trucano
Pisgah, Iowa

Nancy Lee Waggoner
Arthur, Iowa

Hugh Joseph Waldier
Chicago, Illinois



Marilyn Joyce Alloway
Cherokee, Iowa

Albert Allan Anderson
Sioux City, Iowa

Henry Ray Armstrong
Jefferson, Iowa



Nancy Louise Armstrong
Ponca, Nebraska

Florence Jane Arnold
Lake Park, Iowa

Kay Ann Austin
Rock Rapids, Iowa

Sophomores

Fredrick Warren
Emerson, Nebraska

Rodney Ray Williams
Sibley, Iowa

Dorothy Joy Wubben
Ashton, Iowa

LouVonne Ione Wulf
Schleswig, Iowa

Kay Alice Zurcher
Lakewood Center, Washington

Lorraine Collins Bybee
Salix, Iowa



Freshman

Dell Darwin Babbitt
Avoca, Iowa

Marlene Kay Brower
Sioux City, Iowa

Paul Dean Brower
Sibley, Iowa

Dale Ray Brummond
Walthill, Nebraska

Daniel Grant Bullock
Inwood, Iowa

Vincent Sanders Burke
Sioux City, Iowa

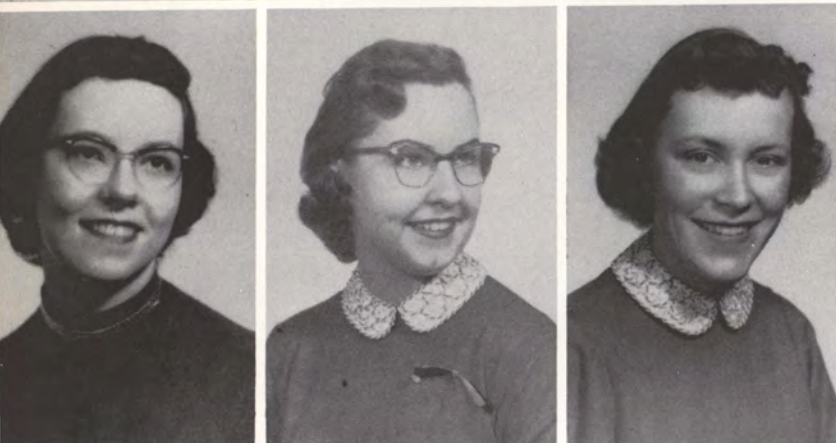




Joan Marilyn Clark
Merrill, Iowa

Nancy Jean Crary
Sioux City, Iowa

Joan Mae Creswell
Danbury, Iowa



Joyce Marie Curtis
Jefferson, Iowa

Constance Ann Davies
Paullina, Iowa

Judith Joan Dirks
Akron, Iowa



Delores Marlene Gelder
Boxholm, Iowa

John David Gilbert
Sutherland, Iowa

Linda Lee Grossenburg
Winner, South Dakota



Penelope Mae Gumz
Madison, South Dakota

Phyllis Marguerite Gunsolley
South Sioux City, Nebraska

Esther Mae Hackett
Smithland, Iowa

Freshman

Don Carlyle Ducommun
Cleghorn, Iowa

Janice Kay Elze
Sutherland, Iowa

Lynn Harriet Emmerson
Sioux City, Iowa



Donna Mae Emmert
Moneta, Iowa

Laurel Evans
Oakland, Iowa

Keith Harley Fry
Sioux City, Iowa

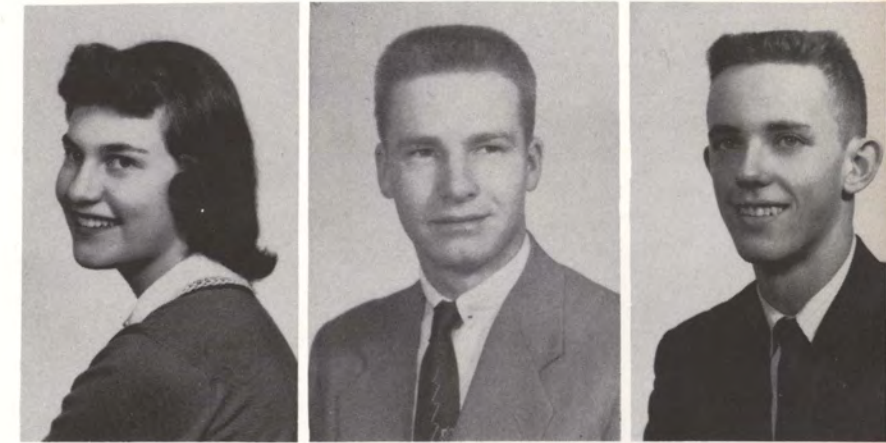


Freshman

Carol Joy Halweg
Merrill, Iowa

Roger LaRoy Hass
Holstein, Iowa

Donald James Hatfield
Sioux City, Iowa



Ruth Maxine Hauser
Doon, Iowa

Dorothy Gene Hays
Jefferson, Iowa

Doyle Dean Hickok
Lohrville, Iowa





Delmar Dewitt Hildreth
Rockwell City, Iowa

Janice Lea Hinrichs
Coleridge, Nebraska

Dixie Lee Hobbs
Whiting, Iowa



Charlotte Ann Johnson
Sioux City, Iowa

Jo Anne Johnson
Sioux City, Iowa

Karen Kae Johnson
Milford, Iowa



Sally Lou Lease
Gowrie, Iowa

Phyllis LaVonne Lebeck
Walnut, Iowa

Carolyn Lorraine Lewis
Sioux City, Iowa



Karen Dee Lias
Sioux Falls, South Dakota

Karen Maxine Lindblade
Sioux City, Iowa

Roger Wendell Linman
Odebolt, Iowa

Freshman

Norma Jean Johnson
Jefferson, Iowa

William Francis Johnson
Sioux City, Iowa

Delores Ann Kahl
Rock Rapids, Iowa

Kathleen Kay Kas
Sioux Rapids, Iowa

DeWitt Arthur Killam
Sioux City, Iowa

Leritta Loy Larson
Deloit, Iowa



Martha Jane Lockwood
Rock Rapids, Iowa

Howard Barton Lohr
Lohrville, Iowa

Elma Mae Love
Sac City, Iowa



Helga Gudrun Lund
Sioux City, Iowa

Marlene Helen Lundahl
Sioux City, Iowa

LuAnn Maassen
Harlan, Iowa

Freshman





Carl Martin Mauer
Sac City, Iowa

Jerry Ray Maycock
Sioux City, Iowa

Carolyn Ann Meyer
LeMars, Iowa



Edwin Lee Mitchell
Cleghorn, Iowa

Beverly Marie Molloff
Hawarden, Iowa

Lady Mary Ann Murphy
Norfolk, Nebraska



Elaine Carol Oetjen
Sac City, Iowa

Nancy Carolyn Osgard
Sioux City, Iowa

Stanley Keith Peterson
Sioux City, Iowa



Clarence Walter Rasmus
Cherokee, Iowa

Curtis Emil Rehder
Paullina, Iowa

Gary Lee Ritz
Sioux City, Iowa

Freshman

Nancy Lynne Myers
Sioux City, Iowa

Hanna Youisf Nasir
Jordan

Robert Lee Niebuhr
Granville, Iowa

Coleen Ann Nielsen
Kimballtown, Iowa

G. Lorenz Nissen
Pierson, Iowa

Mary Lou O'Connor
Sioux City, Iowa



Ethel Hermina Rock
Pierson, Iowa

Kenneth George Rubsam
Lawton, Iowa

Doris May Sadler
Correctionville, Iowa



Sandra Susan Sauvain
South Sioux City, Nebraska

Suzanne Gay Schuldt
Sheldon, Iowa

Janis Grace Seggerman
Marcus, Iowa

Freshman

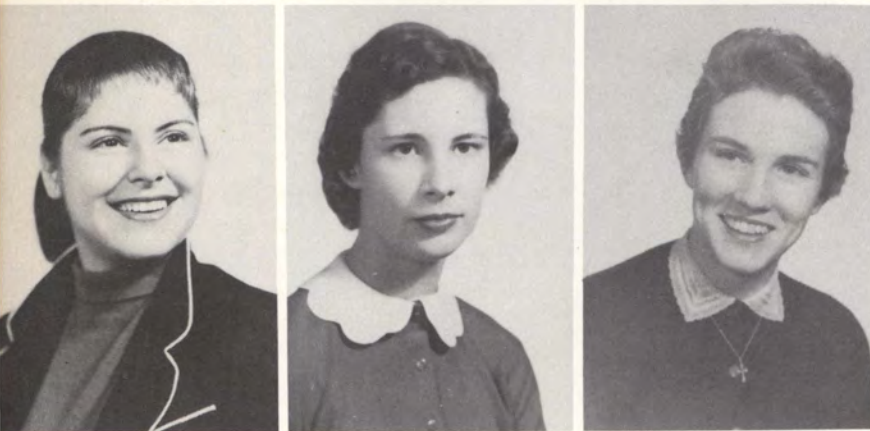




Robert Lee Skaggs
Cherokee, Iowa

Audrey Mae Smeins
Luverne, Minnesota

Anna Belle Smith
Pisgah, Iowa



Lois Carol Stern
Highland Park, Illinois

Sherry Kay Stewart
Page, Nebraska

Janice Elaine Sweet
Nemaha, Iowa



Judith Dale Warren
Rockwell City, Iowa

Tom C. Watt
Sioux City, Iowa

Alice Jeanette Wester
Cherokee, Iowa



Sydney Jean Wilcox
Missouri Valley, Iowa

Roger George Withoelter
Calumet, Iowa

David LeRoy Yappen
Sibley, Iowa

Freshman

James Francis Tevis
Merrill, Iowa

Janice Marie Thompson
Sioux City, Iowa

Marlene Ruth VanDerSloot
Meriden, Iowa

Sharon Kay Walsh
Gilmore City, Iowa

Margie Walters
Sioux City, Iowa

Glenna Rita Wardlow
Sioux City, Iowa



Janice Lee Zortman
Sioux City, Iowa

Freshman

