

The Sioux

1

9

4

4

79.8

THE SIOUX
1 9 4 4

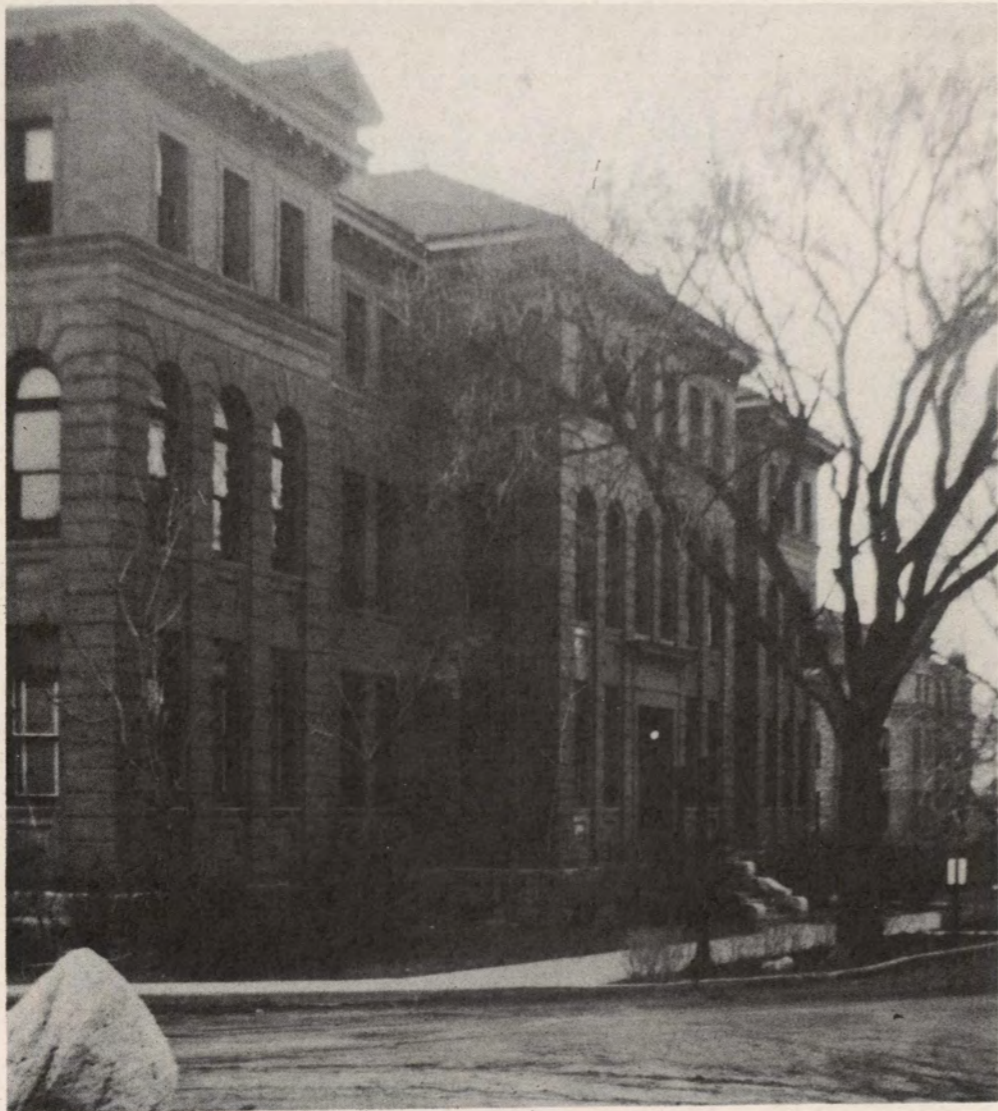
THE SIOUX

1 9 4 4

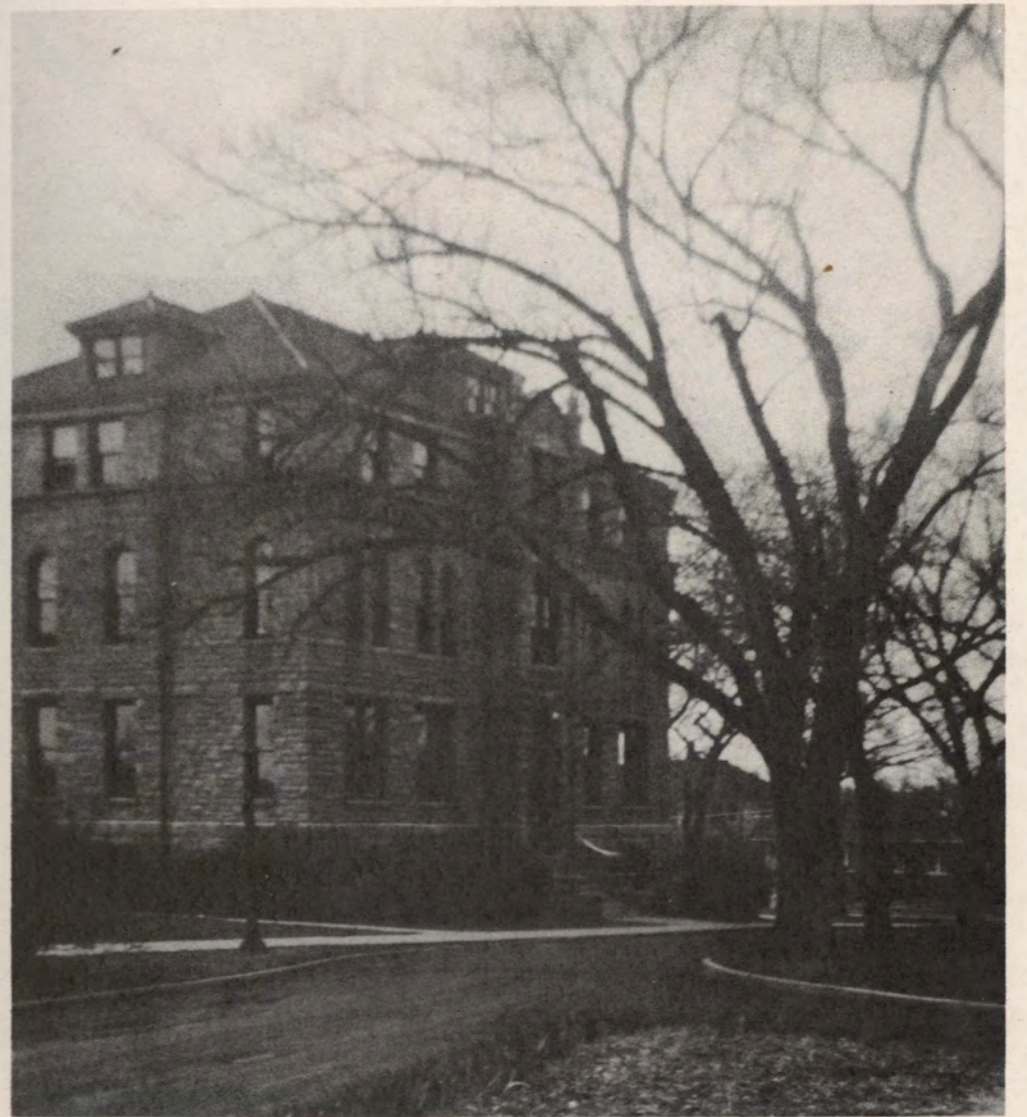
Editor - - - - BEVERLY REHNBLOM
Assistant Editor - - MARJORIE KASTEN
Business Manager - - GUS LEASE
Faculty Adviser - - THOMAS TWEITO



*A record of experiences,
Of friendships old and new,
Bringing memories of college life--
The 1944 SIOUX.*



MAIN HALL



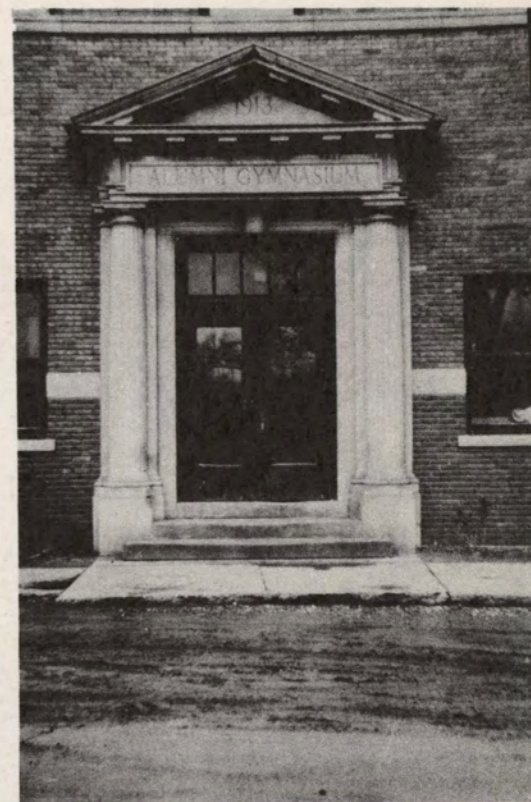
CONSERVATORY



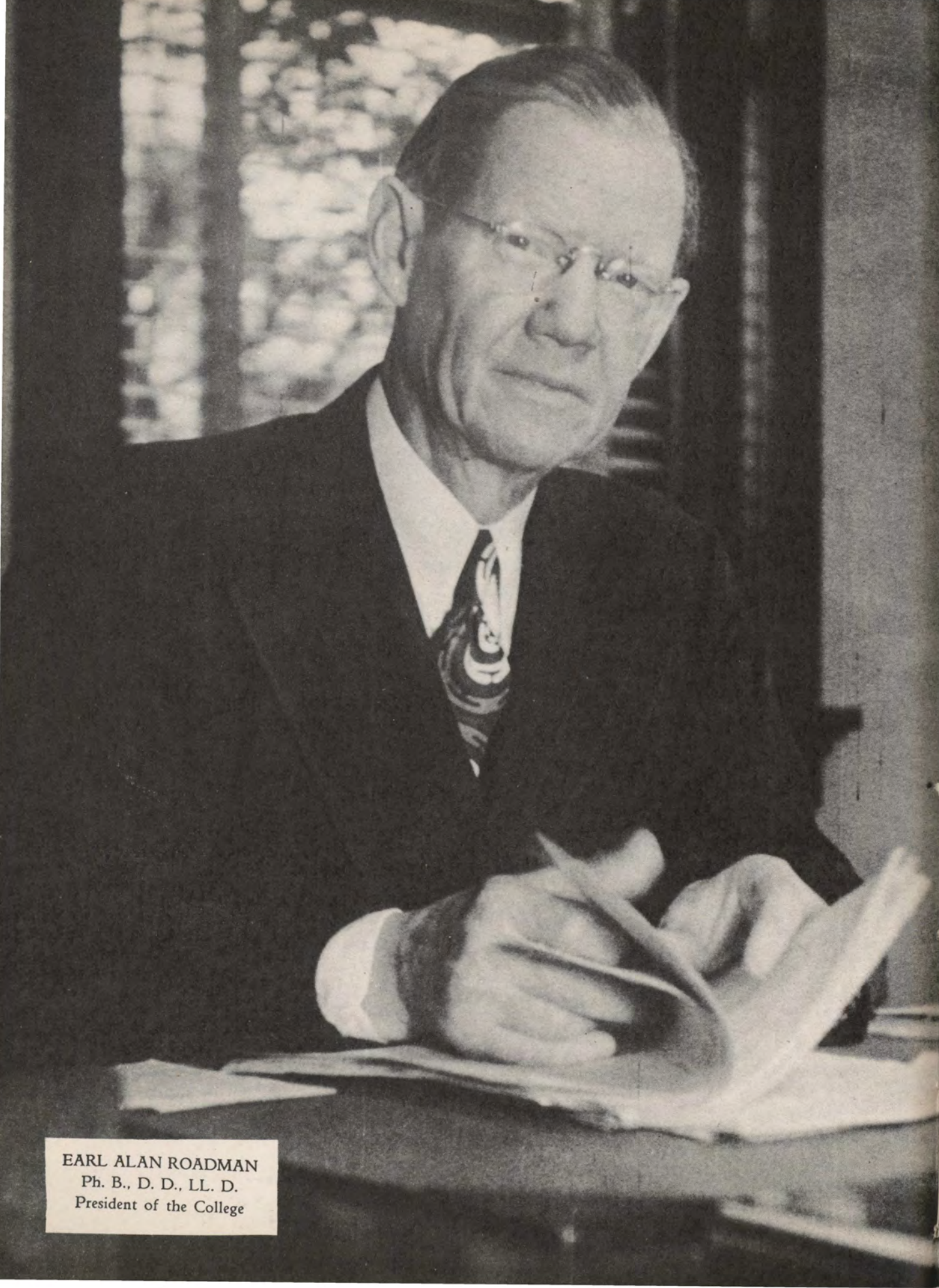
GRACE METHODIST



THE BARN



GYMNASIUM



EARL ALAN ROADMAN
Ph. B., D. D., LL. D.
President of the College



TO THE BUILDERS of Morningside College; to the faculty members who have acted as guides in the realm of education and the adventure of living; to the students who have helped to maintain an atmosphere of interest, enthusiasm and harmonious associations; and to friends who have remained loyal in their support and cooperation—we gratefully dedicate this book.

It is our earnest desire that the progress of the college during the past fifty years will be an inspiration and a challenge to future builders of Morningside.

MORNINGSIDE

1894-1944

The University of the Northwest, organized in 1890 with G. W. Carr as president, became Morningside College in 1894 when the grounds and buildings were purchased by the Northwest Iowa Conference of the Methodist Episcopal Church.

Dr. W. S. Lewis was installed as president of the college in 1897 and served in that capacity until 1908 when he became a bishop to China. During Dr. Lewis' presidency Morningside began to make definite progress. The college debt was cleared away and Main Hall was built in its present location.

Dr. Freeman was the next president. He was followed by Dr. Craig, Dr. Frank E. Mossman, Dr. Robert E. O'Brian, and the present president, Dr. Earl A. Roadman.

In April, 1912, Main Hall was destroyed by fire. Plans began

immediately for a new building; meanwhile, classes were held in Grace church. In February, 1914, a new building was added to those already on the campus—the gymnasium. Fire struck again in December, 1914. This time the conservatory burned and was rebuilt.

One of Miss Dimmitt's dreams was realized when the Womens' Residence Halls were completed and occupied on April 1, 1926. The dormitory is now being used as a barracks for Army Air Cadets, but it will again serve as a home for Morningside girls when the war is over.

In this fiftieth year of its existence Morningside College has successfully launched a campaign to free the college from indebtedness and to create a fund for use in further growth and development of the college.

BOARD OF TRUSTEES

OFFICERS

D. W. Stewart, President - - - - - Sioux City, Iowa
 *H. I. Down, First Vice-President - - - - - Sioux City, Iowa
 *John Kolp, Second Vice-President - - - - - Manson, Iowa
 R. J. Sweet, Secretary - - - - - Sioux City, Iowa

TRUSTEES OF HONOR

Emlin Bergeson, Manager, Mid-West Live Stock Commission Co. - Sioux City, Iowa
 C. C. Harshbarger, Bank Receiver - - - - - Onawa, Iowa
 J. N. Hughes, Attorney - - - - - Des Moines, Iowa
 A. W. Jones, Banker - - - - - Cherokee, Iowa
 Mrs. C. F. Long, Housewife - - - - - Sioux City, Iowa

TERMS EXPIRE 1944

C. L. Barks, Insurance - - - - - Orange City, Iowa
 F. E. Burgess, Minister - - - - - Spencer, Iowa
 *H. I. Down, Physician and Surgeon - - - - - Sioux City, Iowa
 J. A. Farnham, Minister - - - - - Cherokee, Iowa
 C. N. Smith, Manager, Weatherwax Clothing Company - - - - - Sioux City, Iowa
 D. W. Stewart, Attorney - - - - - Sioux City, Iowa

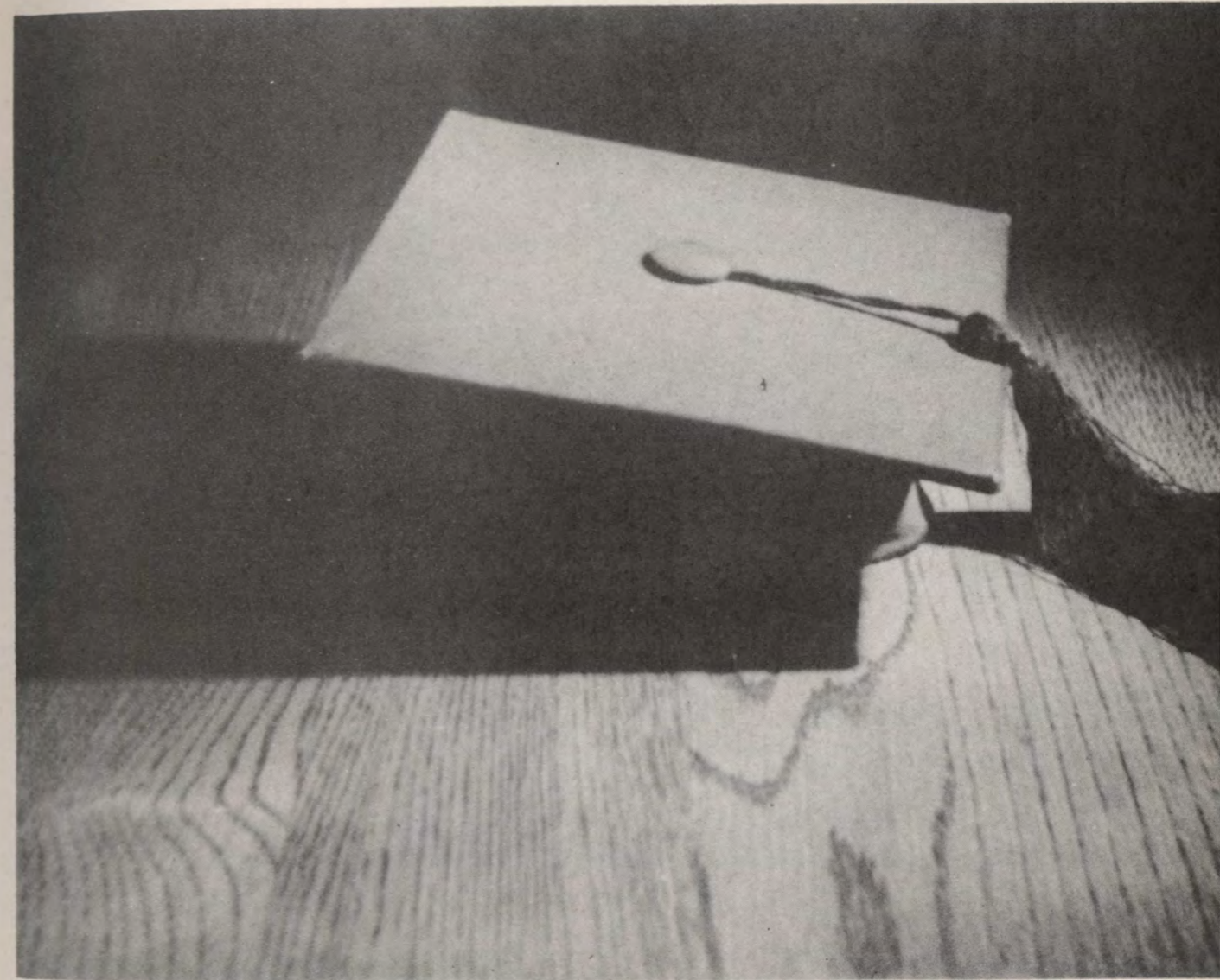
TERMS EXPIRE 1945

H. M. Burns, Minister - - - - - Sioux City, Iowa
 J. C. Buthman, Minister - - - - - Sioux City, Iowa
 L. D. Havighurst, Superintendent Fort Dodge District - - - - - Fort Dodge, Iowa
 Ray J. Harrington, Physician and Surgeon - - - - - Sioux City, Iowa
 Leon Hickman, Attorney - - - - - Pittsburg, Pennsylvania
 Francis Kingsbury, Banker - - - - - Ponca, Nebraska
 *John Kolp, Insurance - - - - - Manson, Iowa
 W. H. Lease, Minister - - - - - Schaller, Iowa
 Frank G. Bean, Superintendent Sioux City District - - - - - Sioux City, Iowa
 L. H. Scheerer, Superintendent Sheldon District - - - - - Spencer, Iowa
 C. S. Van Eaton, Merchant - - - - - Sioux City, Iowa
 Miss Ray Wetmore, Play Publisher - - - - - Sioux City, Iowa

TERMS EXPIRE 1946

W. L. Breau, Minister - - - - - Humboldt, Iowa
 C. W. Britton, Investment Banker - - - - - Sioux City, Iowa
 G. W. Dunn, Minister - - - - - Sioux City, Iowa
 Harold Winter, Insurance - - - - - Cincinnati, Ohio
 Clifford Harper, Attorney - - - - - Sioux City, Iowa
 C. H. Brechlin, Kresge Store - - - - - Sioux City, Iowa
 R. F. Roach, Manager, J. C. Penny Company - - - - - Sioux City, Iowa

*In Military Service.



THE FACULTY



WILLIAM JOHN SCARBOROUGH
A. B., A. M., S. T. B., Ph. D.
Dean of the College
Director of Summer Session



ALVA TOLF
 B. A., M. A.
 Acting Dean of Women
 Instructor of Orientation

MYRON EARLE GRABER
 A. B., A. M., Ph. D., D. Sc.
 Professor of Physics



MARJORIE ARKWRIGHT
 B. S.
 Dietician

CLINTON E. BURRIS
 A. B.
 Librarian

MRS. CLINTON E. BURRIS
 Assistant Librarian

MRS. SAM CARTER
 Assistant Registrar

MRS. JUNE CARWELL
 Secretary to the Business Manager

MRS. BONNIE FREDERICKSON
 Cashier

IRA J. GWINN
 A. B., M. S.
 Registrar, Administrative Secretary,
 Assistant Professor of Physics

BETTY JAMESON
 B. S.
 Dietician

J. E. KIRKPATRICK
 A. B., A. M., PH. D.
 Professor of Education, Coordinator of
 81st C. T. D.

ARKWRIGHT
 BURRIS
 BURRIS

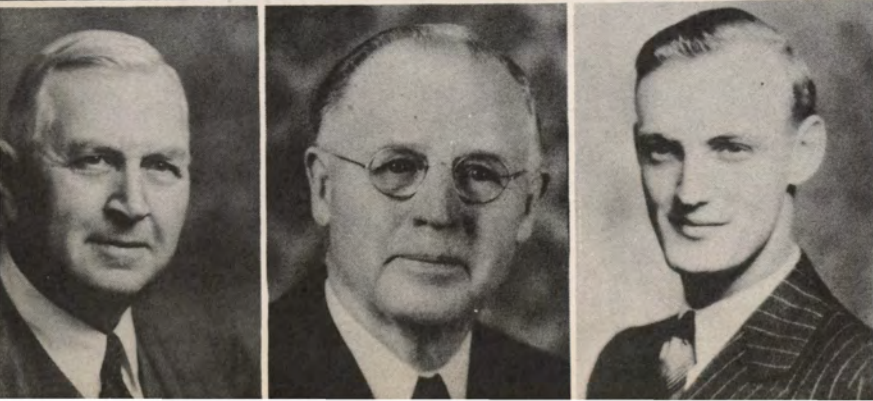
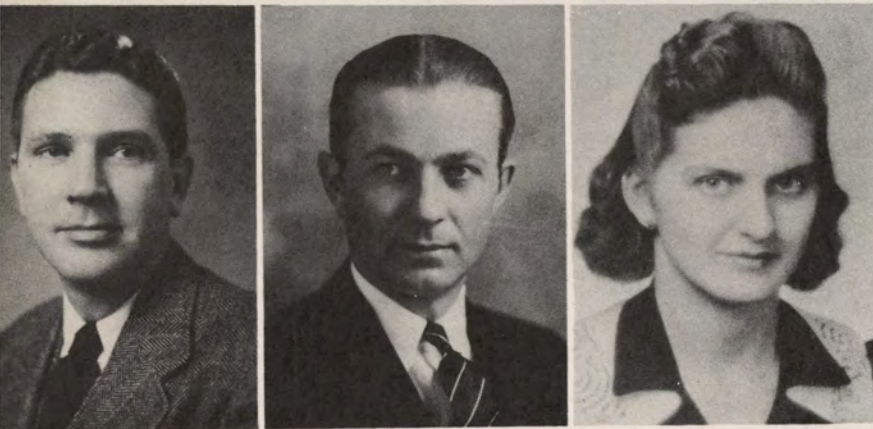
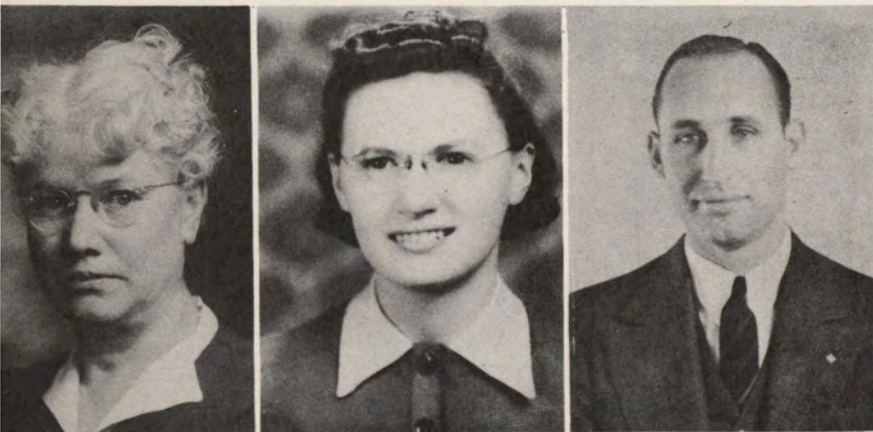
CARTER
 CARWELL
 FREDERICKSON

GWINN
 JAMESON
 KIRKPATRICK

MACARTHUR
McCLURE
RAUN

SCHENCK
SCHULD
T SWEET

HODGES
LIBA
SNYDER



MRS. MAE MACARTHUR
Bookkeeper

T. N. McCLURE
Business Manager

H. J. RAUN
Superintendent of Buildings and Grounds

EARLENE SCHENCK
Personnel Office Secretary

VICTOR V. SCHULD
A. B., B. D.
Director of Admissions

ROY J. SWEET
Assistant Business Manager

MARVIN ORR HODGES
A. B.
Instructor in Physical Education

MARIE LIBA
B. P. E., B. S.
Instructor in Physical Education

DONALD M. SNYDER
B. S.
Acting Director of Physical Education

DR. C. F. BERKSTRESSER
M. D.
College Physician

MRS. J. PATCH
R. N.
College Nurse

KATHRYN PRICE CLAYTON
MUS. B.
Instructor in Pianoforte

RICHARD CLAYTON
MUS. B.
Instructor in Violincello

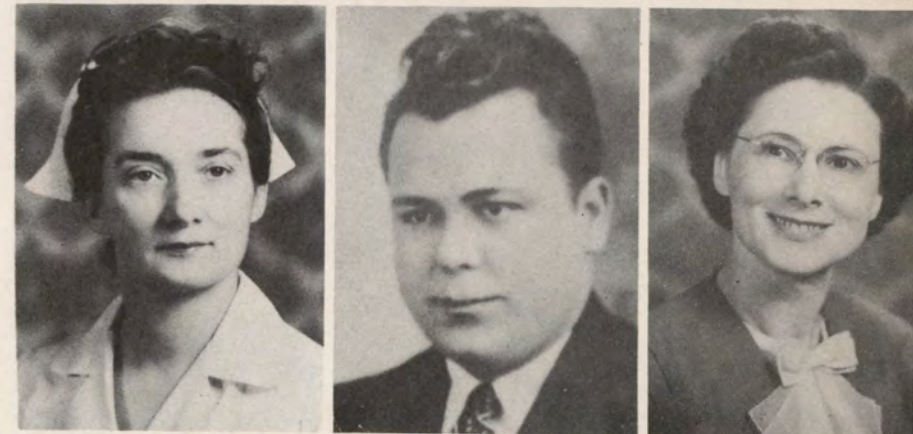
FRANCIS JENNEWEIN ELTON
B. S.
Instructor of Band and Instrumental Music

LOIS JANE GRAMMER
B. F. A., M. MUS.
Head of School Music Department

CLARA ASMUS GRAY
MUS. B.
Instructor in Pianoforte

MRS. O. B. KRAEMER
Instructor in Speech and Dramatics

ETHEL T. KUCINSKI
MUS. B.
Instructor in Pianoforte



BERKSTRESSER
PATCH
CLAYTON

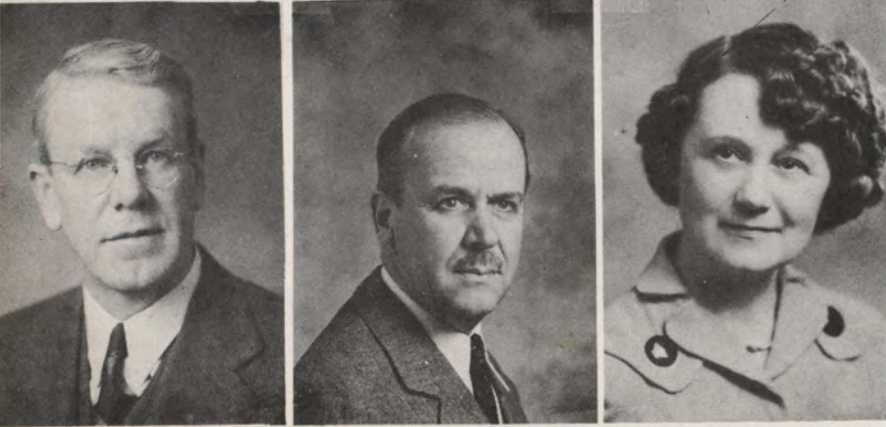
CLAYTON
ELTON
GRAMMER

GRAY
KRAEMER
KUCINSKI

MACCOLLIN
MACCOLLIN
PENSIS

PESILE
REISTRUP
SMITH

ANDERSON
BERGH
CARSON



ELIZABETH N. MACCOLLIN
MUS. B., A. B.
Instructor in Voice

PAUL MACCOLLIN
A. B., MUS. B.
Director of the Conservatory of Music,
Professor of Voice

HENRI PENSIS
MUS. M.
Head of Violin Department

ROCCO PESILE
Instructor in Violin

JAMES REISTRUP
MUS. B.
Head of Pianoforte Department

GRACE PERL SMITH
A. B., A. M.
Instructor in Art

LEONARD C. ANDERSON
B. A., M. A.
Instructor in Economics

BEATRICE BERGH
A. B., A. M.
Supervisor of Practice Teaching,
East Junior High School

FREDERICK S. CARSON
PH. B., D. D.
Instructor in Religion

EARLE E. EMME
A. B., B. D., A. M., PH. D.
Professor of Psychology

HORACE B. HAWTHORN
B. S., M. S., PH. D.
Instructor in Sociology

MARCIA MCNEE
A. B., A. M.
Professor of Elementary Education

MENDAL B. MILLER
A. B., A. M.
Professor of Economics and Sociology

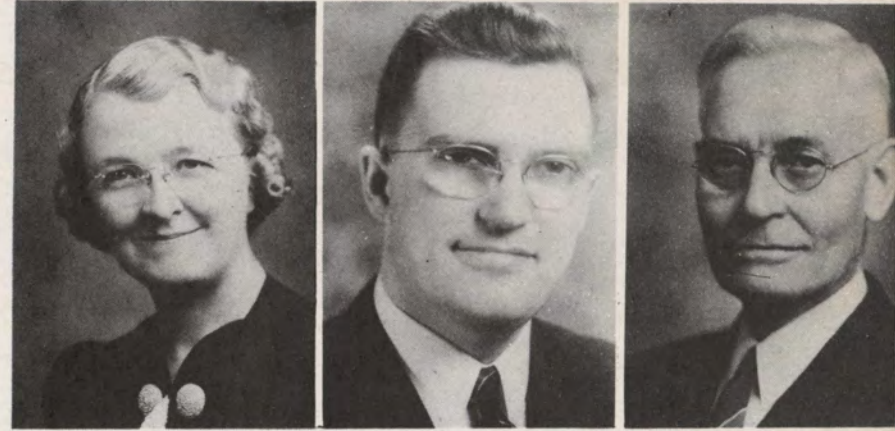
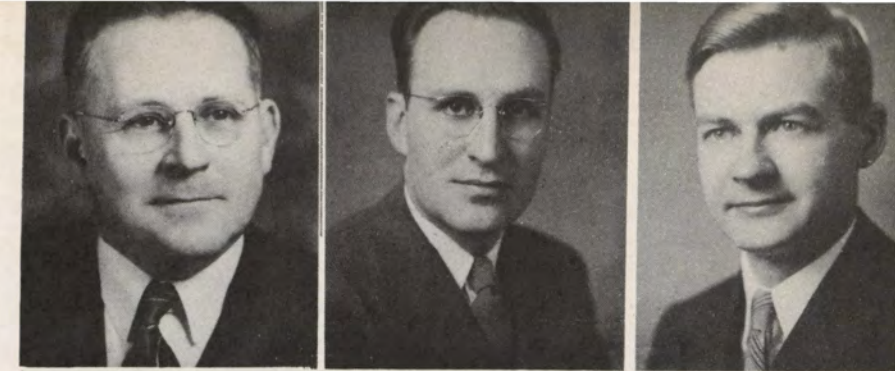
ETHEL R. MURRAY
A. B., A. M.
Assistant Professor of History

WILLIAM J. SCARBOROUGH
A. B., A. M., S. T. B., PH. D.
Professor of Philosophy and Religion

THOMAS E. TWEITO
A. B., A. M., PH. D.
Professor of History

STELLA DAY YATES
B. S., M. S.
Instructor in Commercial Education

JAMES A. COSS
B. S., M. S.
Professor of Chemistry



EMME
HAWTHORN
MCNEE

MILLER
MURRAY
SCARBOROUGH

TWEITO
YATES
COSS



GRABER
STEPHENS
THORNGREEN

VANHORNE
DIMMITT
FISHER

KANTHLENER
MILLS
WOODFORD

MYRON EARLE GRABER
A. B., A. M., PH. D., D. Sc.
Professor of Physics

THOMAS C. STEPHENS
A. B., M. D.
Professor of Biology

PHYLLIS THORNGREEN
A. B.
Instructor in Biology

ROBERT N VANHORNE
PH. B.
Professor of Mathematics

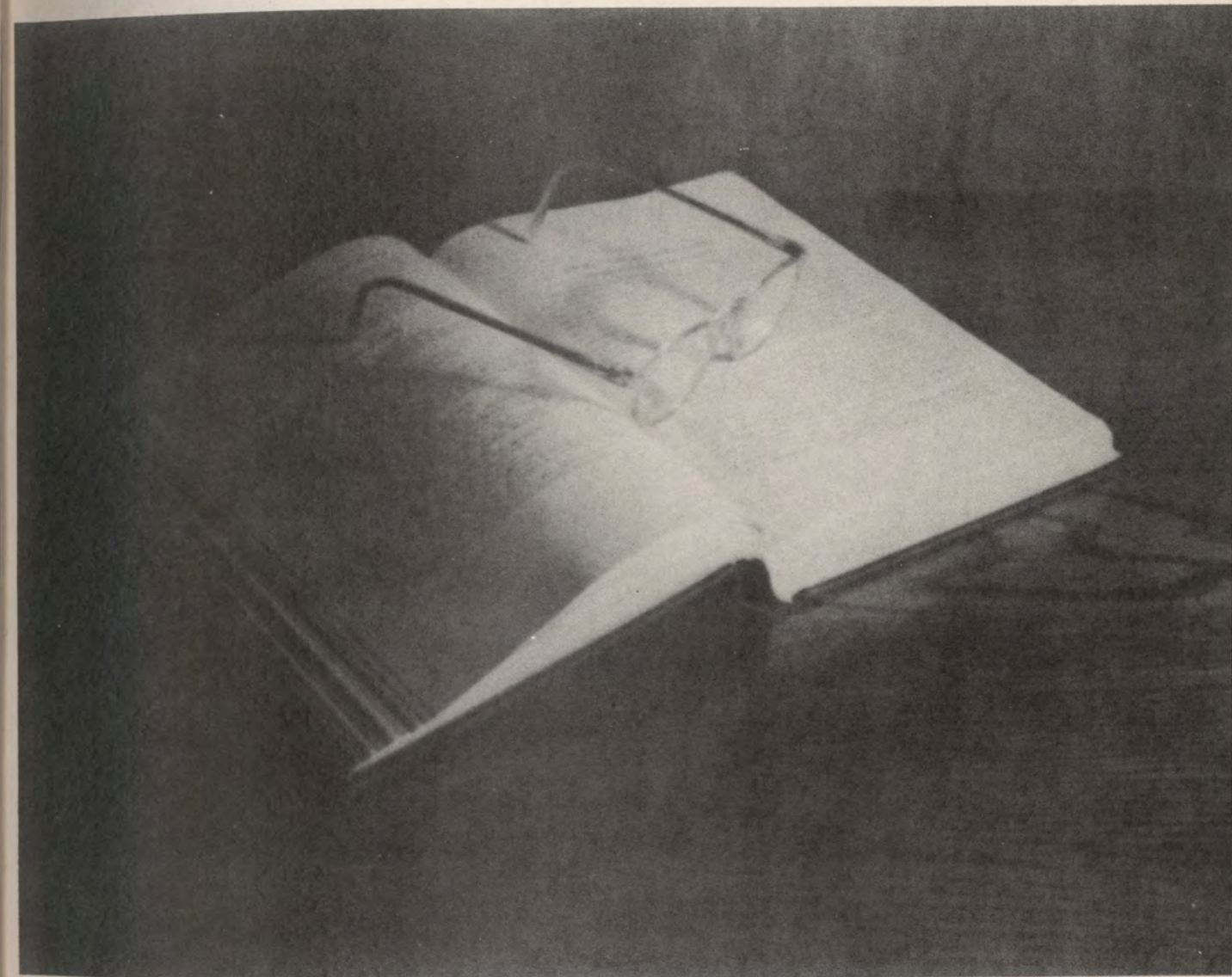
LILLIAN ENGLISH DIMMITT
A. B., A. M., L. H. D.
Professor of Ancient Languages and
Dean of Women Emerita

LAURA C. FISHER
A. B., A. M.
Professor of German

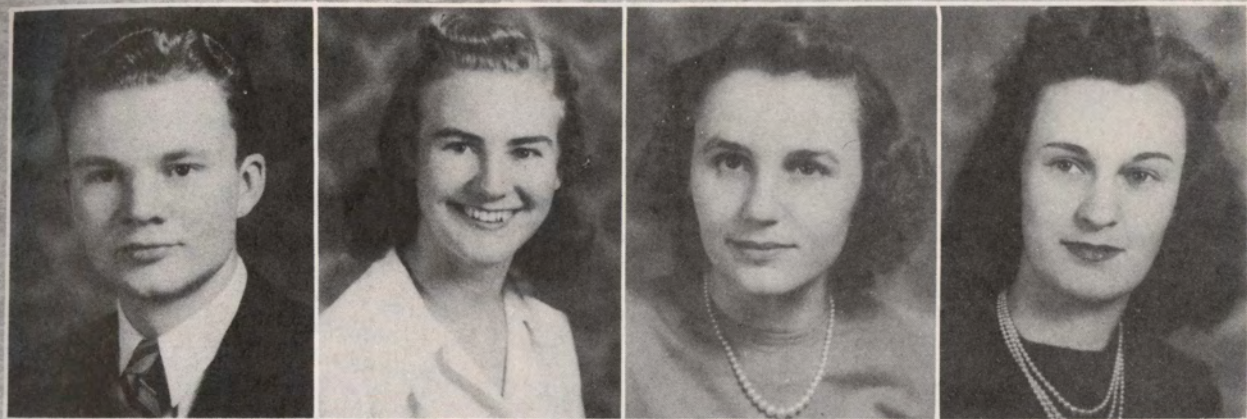
HENRY F. KANTHLENER
A. B., A. M.
Professor of Romance Languages

MIRAH MILLS
A. B., A. M.
Professor of English

FAITH FOSTER WOODFORD
A. B., MUS. B.
Instructor in Pianoforte and
History of Music and English



STUDENTS



SENIORS

- President - - - - - WESLEY JACOBSON
- Vice-President - - - - - RUTH RITLAND
- Secretary-Treasurer - - - - - GLORIA ODEGARD
- Student Council Representative - - - - - MIRIAM COX



ASHBY
BRUHN
COSMAN

BECKWITH
BURRIS
COX

HELEN ASHBY, B. A.

Kappa Pi Alpha Hall Chairman 3, Sergeant-at-Arms 4, Treasurer 4, Vice-President 4; W.A.A.; Inter-Sorority Council Secretary 4.

"A pretty baby, and a swell Pi."

BETTY LOU BECKWITH, B. S. M.

Kappa Zeta Chi Directress 2, Social Chairman 3, Treasurer 3, Vice-President 4, President 4; W.S.G.A. Vice-President 4; Chapel Choir 1, 2, 3, 4; M.C.A. 1, 2, 3; Y.W.C.A. 4; F.T.A. 3, 4.

*"How can my poor heart be glad
When absent from my sailor lad!"*

LUELLA BRUHN, B. S. M.

Alpha Sigma; Mu Phi Epsilon Recording Secretary 3, 4; Band 1, 2, 3, 4; Vesper Choir 1; Chapel Choir 2, 3, 4; Madrigal 4; Symphony 2, 3, 4; F.T.A. 4.

"A versatile musician of true merit."

DAVE BURRIS, B. S.

Chapel Choir 1, 2, 3.

"Take two—they're small!"

WILLIAM COSMAN

Kappa Chi 1, 2, 3, 4.

*"What more could a man ask—a sweet wife and
a sweet pipe?"*

MIRIAM COX, B. A.

Kappa Pi Alpha Recording Secretary 3, Vice-President 4, President 4; Student Council Secretary 4; Sigma Tau Delta Vice-President 3, President 4; Inter-Sorority Council 3, 4; Chapel Choir 1, 2, 3; Y.W.C.A. 4; F.T.A. 4; W. A. A. 4; Collegiate Players 4.

"She wears a pair of silver wings."

GERTRUDE CURTIS, B. A.

"Gentleness does more than violence."

DOROTHY DAWSON, B. S. M.

Kappa Pi Alpha Sergeant-at-Arms 2, Chaplain 3, Librarian 4, Recording Secretary 4; W.S.G.A. 4; Vesper Choir 1, 2; Chapel Choir 4; Band 4; M.C.A. 1, 2; Y.W.C.A. 4; F.T.A. 4.

"She has music in her fingers—and in her toes."

KATHRYN DEIRUP, B. A.

Beta Beta Beta 3, 4, Secretary 4; Biology Club 2, 3, 4, President 4; Y.W.C.A. 4; Collegian Reporter 1, 2; W.A.A. 1, 2.

"Doing her bit for the home front!"

PHYLLIS DOWNEY

Alpha Sigma 2, Recording Secretary 2; Sophomore Student Council Representative; Agora Vice-President 4; Student Library Committee 3.

"Knit one, purl two—why waste my class time?"

JOAN ELSINGA

Eta Sigma Phi 2, 3, 4, Secretary 2; Sigma Pi Sigma 3, 4; Sigma Tau Delta 3, 4; Manuscript Club 2, 3, 4, Secretary 2, Editor 4; Collegiate Players 1; Annual Staff 2; Zeta Sigma.

*"I wish we knew how she manages A grades with
her love life!"*

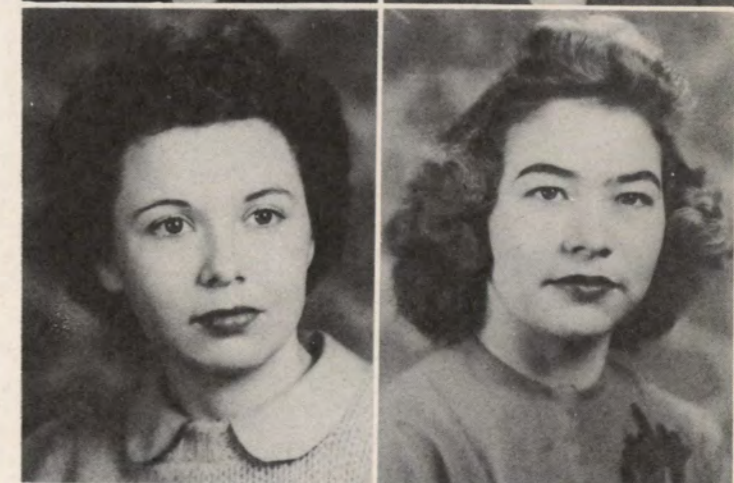
MARJORIE FOSTER, B. A.

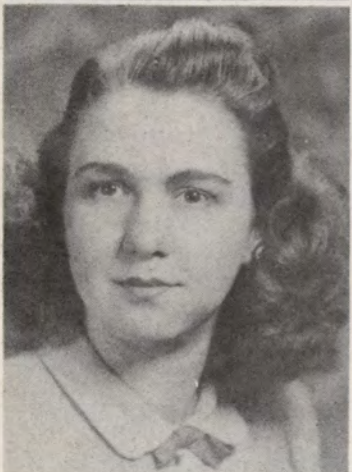
Kappa Zeta Chi; Phi Sigma Iota 3, 4, Vice-President 3, President 4; Sigma Tau Delta Secretary 3, 4; Psi Chi President 3, Corresponding Secretary 4; Manuscript Club Secretary 2, Co-Editor 3; Sioux Photography Editor 3; Collegian News Editor and Reporter 1, 2; Board of Control 4.

"Quick to learn and wise to know."

CURTIS
DEIRUP
ELSINGA

DAWSON
DOWNEY
FOSTER





JANE GARRETSON, B. A.

Alpha Sigma Corresponding Secretary 3, Treasurer 4; Inter-Sorority Council Secretary 3; F.T.A. 2; Ishkoodah Artist and Vice-President.

"A sparkle in her eyes and a sparkler on her finger."

IVAN GOSSOO, B. A.

Kappa Chi 1, 2, 3, 4, Sergeant-at-Arms 2, Treasurer 3; Collegian Reporter 2, 3; International Relations Club 2, 3; M.C.A. 1, 2, 3, President 3; WHO'S WHO.

"Well, now it was this way—"

LYLA MAE HANSEN

Chadron State Teachers; Kappa Zeta Chi Chaplain 4, Critic 4; Student Council 4; Cheer Leader 2; W.A.A. President 4.

"Is it my fault that the cadets loiter in the bookstore?"

ROBERTA HELD HASEK, B. A.

Kappa Zeta Chi; Student Body Vice-President; Agora Freshman Representative, Agora Board 3; W.A.A. 2, 3, 4.

"Why study when I've reached my goal in college?"

MARY LOUISE HELD, B. A.

Kappa Zeta Chi 3, 4, Librarian 4; Psi Chi 2; M.C.A. 1, 2; Y.W.C.A. 4; F.T.A. 3, 4; Annual Staff 4; W.A.A. 4.

"I'm from Hinton—and there are more where I came from!"

LOIS HELM, B. A.

Kappa Zeta Chi Usher 3, Vice-President 4; W.S.G.A. 3, 4, Social Chairman 3, President 4; Student Council 4; Agora 3, 4, Junior Representative, Second Vice-President 4; Collegian Reporter 2, Sports Editor 3, Associate Editor 4; W.A.A. 1, 2, 3, 4, Treasurer 3, Secretary 4; Yale-Harvard 1, 2, 4, Captain 4.

"Her friendliness knows no bounds—she's tops!"

WESLEY JACOBSON, B. A.

Student Council 3, 4; Pi Kappa Delta President 3; Eta Sigma Phi 2, 3, 4; Senior Class President; F.T.A. 2; Varsity Debate 2, 3; Collegiate Radio Forum 4; Junior Scholarship; Zeta Sigma; WHO'S WHO.

"A true gentleman—and a scholar!"

MARVEL LAMB, B. S. M.

Alpha Sigma Pianist 3, Secretary 4, Critic 4; Inter-Sorority Council 4; W.S.G.A. 3; Band 1, 2, 3, 4; Chapel Choir 1; F.T.A. 4; Grace Collegians 3.

"True blue to the navy."

DON LA SUER, B. A.

Student Council 4; Kappa Chi Secretary-Treasurer 2, Sergeant-at-Arms 3, President 4; Eta Sigma Phi Vice-President 3, 4; International Relations Club 3; Cosmopolitan Club 4; M.C.A. 1, 2, 3; Y.M.C.A. 4; Collegian Reporter 1, 2, 3, 4; Radio Forum 4.

"My mind is in a state of philosophical doubt."

WILLIAM MILLER, B. A.

Kappa Chi Vice-President 3; Psi Chi President; Zeta Sigma.

"Just because I don't tell everything I know doesn't mean that I don't know it."

BETTY MITCHELL, B. S. M.

Kappa Zeta Chi Directress 3, Recording Secretary 4; Agora Senior Representative; Chapel Choir 3.

"I got through college in a hurry, but I didn't miss any of it."

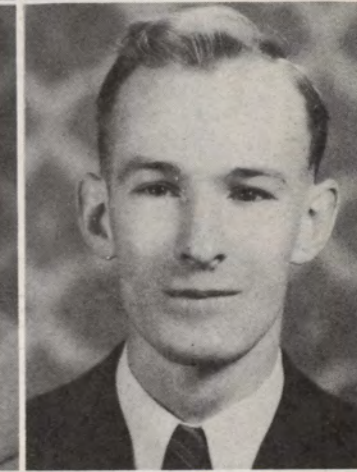
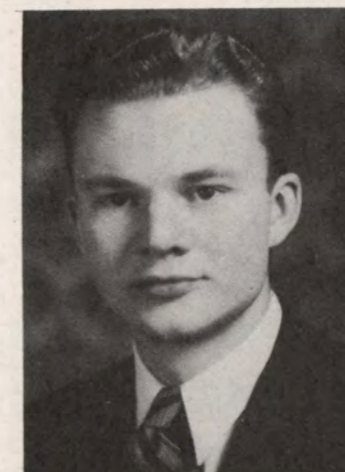
WILLO JEAN NIEMEYER, B. A.

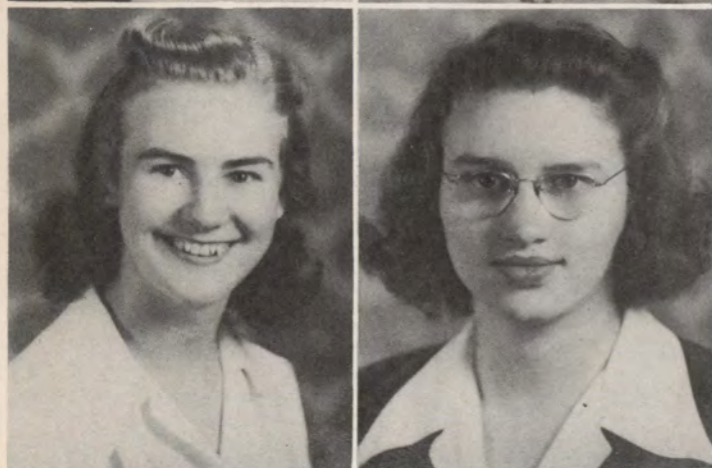
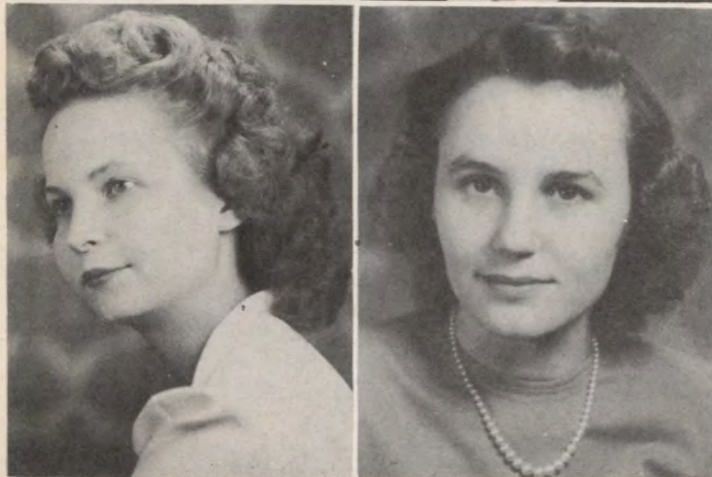
Kappa Pi Alpha Social Chairman 3, Recording Secretary 4, President 4; Student Council 3, 4; Student Body President; W.S.G.A. 3; Chapel Choir 1; Y.W.C.A. 4; Collegian Reporter 3, 4; Sioux Senior Editor; Ishkoodah President; Board of Control 4; Social Life Committee 4; Attendant to Homecoming Queen; WHO'S WHO.

"The marines have the situation well in hand."

JACOBSON
LA SUER
MITCHELL

LAMB
MILLER
NIEMEYER





NORRIS
O'CONNOR
RITLAND

OBYE
ODEGARD
ROORDA

MARY NORRIS

Northwestern University; Kappa Chi Vice-President 3; Cosmopolitan Club 3; Chapel Choir 3, 4; M.C.A. 3; Y.W.C.A. 4.

"Another Mary with a golden voice."

FERNE DUNN OBYE, B. A.

Kappa Zeta Chi Recording Secretary 3, Vice-President 3, First Critic 4, President 4; Sigma Tau Delta 3, 4; Inter-Sorority Council 3; Ishkoodah President; Agora Board 3, President 4; Freshman Student Council Representative; Student Body President; Annual Staff 2, 3; May Queen Attendant; W.A.A. 2, 3, 4; Homecoming Queen; WHO'S WHO.

"Her degree of MRS came first."

MURIEL MILLER O'CONNOR, B. S. M.

University of Nebraska; Chapel Choir 3, 4.

"They don't come any sweeter."

GLORIA ODEGARD, B. A.

Eastern State Normal; Kappa Zeta Chi Directress 2, Usher 3, Secretary 4; Senior Secretary-Treasurer; Symphony 3, 4; F.T.A. 4; Collegiate Players 4; Collegian Reporter 2, 4; Agora Board 2.

"She has proven her abilities in many fields."

RUTH RITLAND, B. A.

Waldorf Junior College; Kappa Zeta Chi Usher 2, Corresponding Secretary 3, Directress 4; Psi Chi Vice-President 3, Secretary 4; Senior Vice-President; W.A.A. 2, 3, 4; International Relations Club 3.

"The Zets will miss her dashing around."

LOIS ROORDA, B. S. M.

Alpha Sigma; Mu Phi Epsilon 3, 4, President 4; Conservatory Student Body President 4; Chapel Choir 3, 4; M.C.A. 2; Y.W.C.A. 4; F.T.A. 2, 4.

"The con won't be the same without her."

HELEN SHOEMAKER RUBY, B. S. M.

Mu Phi Epsilon 4; Y.W.C.A. 4; Band 1, 2, 3, 4; Chapel Choir 1, 2, 3, 4; Symphony 1, 2; Madrigal 1, 2, 3, 4; Flute Quartet 1, 2; Messiah Soloist 3; F.T.A. 2, 3, 4.

"I am torn between two loves—my husband and my formal education!"

MARION SANDERS, B. S. M.

Kappa Pi Alpha Treasurer 4; Conservatory Vice-President; W.S.G.A. 3; Band 1, 2; Vesper Choir 1; Chapel Choir 2, 3, 4; F.T.A. 4.

"I love life—and I want to sing."

JOYCE ROADMAN SCOTT, B. A.

University of Illinois 3; Kappa Zeta Chi Librarian 2, Critic 4; Pep Club 1; Cheer Leader 2; Collegian Reporter 2; Agora Freshman Representative; W.A.A. Board; Yale-Harvard Game 1, 2; May Queen Attendant.

"This is the real thing—at last."

JOSEPHINE SHAWVER, B. S. M.

Alpha Sigma Corresponding Secretary 4; Mu Phi Epsilon 3, 4, Warden 3, Vice-President 4; Symphony 1, 2, 3, 4; Chapel Choir 4; String Quartet 3; Piano Trio 2, 4; Madrigal 4; Y.W.C.A. 4, Treasurer 4; F.T.A. 2, 3, 4.

"Mr. Clayton's protegee."

ALICE SHKURENSKY, B. A.

Alpha Sigma Vice-President 3; Eta Sigma Phi 2, 3, 4, Vice-President 3; Kappa Chi 2, 3; Cosmopolitan Club 3.

"Where Alice is, there is fun."

MARY ELLEN SNYDER, B. A.

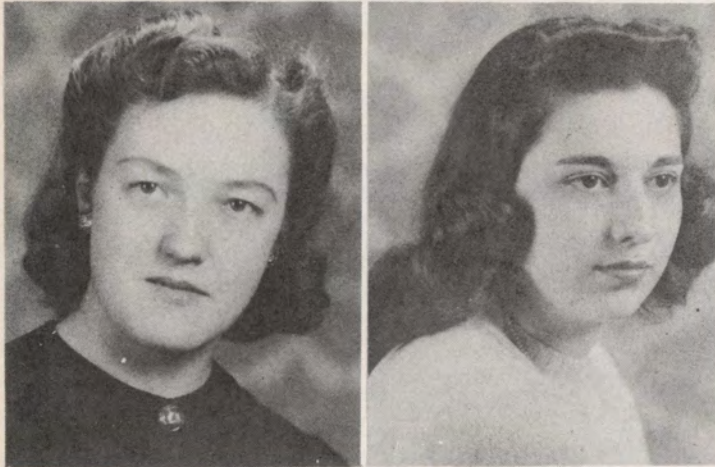
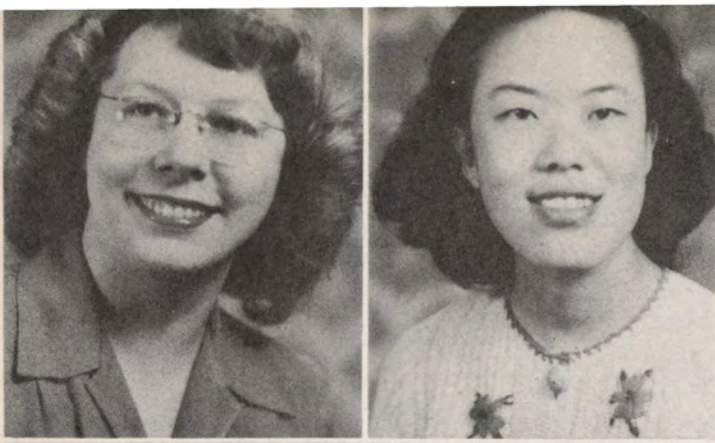
Alpha Sigma Chaplain 4; Sigma Tau Delta 3, 4, Vice-President 4; Manuscript Club 2, 3, 4; W.S.G.A. 4; Chapel Choir 2, 3, 4; M.C.A. 3; Y.W.C.A. 4; F.T.A. 3; Collegian Reporter 2, 4; Co-editor Manuscript 3; Attendant to Homecoming Queen; Sioux Literary Editor 4; Agora Board 4.

"A wee, winsome maid with winning eyes."

RUBY
SCOTT
SHKURENSKY

SANDERS
SHAWVER
SNYDER





VOIGT
WELLS

WANG
WICKLUND

DORCAS VOIGT, B. A.

Alpha Sigma Critic 3, President 4; Beta Beta Beta 4; Biology Club Vice-President 4; Collegian Reporter 3, 4, Associate Editor 3; Sioux Picture Editor 4.

"The spark-plug of the Alpha Sigs."

VERA WANG

Alpha Sigma Chaplain 3, Reporter 4; Beta Beta Beta Historian 2, 3, 4; Biology Club Secretary 1, President 2, Treasurer 3; Cosmopolitan Club President 3, 4; Agora Secretary 3, 4; W.S.G.A. 2; M.C.A. 1, 2; Collegian Reporter 3, 4; WHO'S WHO.

"She should inspire all American students—a great representative of the youth of New China."

DOROTHY WELLS, B. A.

Kappa Chi 1, 2, 3, 4, Secretary 2, National Secretary-Treasurer 4; Psi Chi 3, 4, Secretary 3, President 4; International Relations Club Secretary 3; Cosmopolitan Club 3, 4; M.C.A. 1, 2, 3; WHO'S WHO.

"My mind isn't always on a serious theme."

BETTY WICKLUND, B. S. M.

Kappa Pi Alpha Chaplain 4; Mu Phi Epsilon 4, Alumni Secretary 4; Chapel Choir 1, 2, 3, 4.

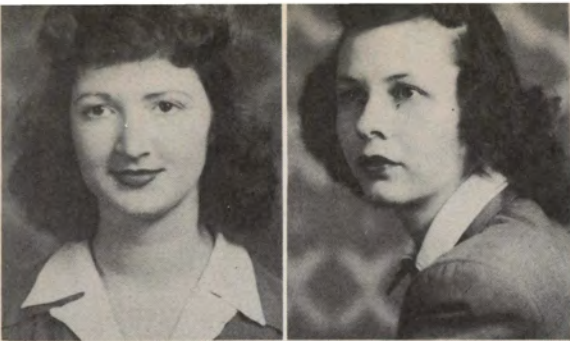
"I just never know what's going on!"



JUNIORS

President
Secretary-Treasurer
Student Council
Representative

ARLENE DORNBUSCH
BETTY ANNE CAIRY
MARCILLE BOHN



MARCILLE BOHN
"I could go into a power dive if an objective would present itself."

BETTY CAIRY
"She wears a West Point "A" pin."

MARY LOU CHAMBERLIN
"Where there's smoke, there's fire."

EVELYN DAVIS
"Actions speak louder than words."

ARLENE DORNBUSCH
"Hands off, that's Navy stuff."

EILEEN GUSE
"My scattered brains are becoming consolidated."

BONITA HAHN
"I love life, so let me live."

INEZ HARRIS
"Quiet manners and deep black eyes are Inez's."

BOHN
CHAMBERLIN
DORNBUSCH
HAHN

CAIRY
DAVIS
GUSE
HARRIS

HELD
HUXTABLE
KAHOUN
KELLER

HINRICHS
JENSEN
KEITH
LEASE



LOIS HELD
Blue-ribbon winner."

IRENE HINRICHS
"Strictly a character."

ROSEMARY HUXTABLE
"No beauty is like the beauty of the mind."

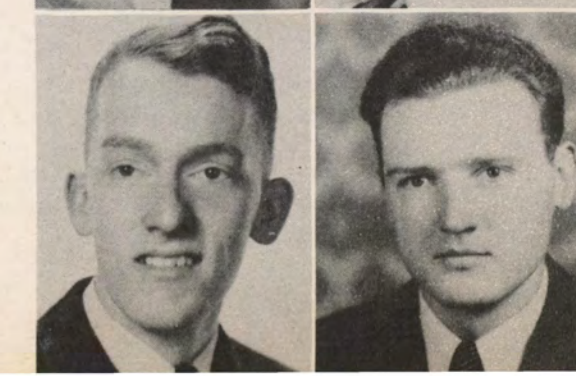
MILDRED JENSEN
"By saying nothing you may pass as wise."

JEANETTE KAHOUN
"I've got gobs of love for the Navy."

HARRIET KEITH
"In tune with the universe."

DONALD KELLER
"God put men like him on earth to challenge the laws of nature."

GUS LEASE
"A Lawrence Tibbett in the making."





MADSEN
NEAL
SARGEANT
VANDEBRAKE

MURRAY
REHNBLOM
TIEMENS
WESTERGAARD

EVELYN MADSEN
"No truer friend could e'er be found."

NAOMI MURRAY
"Bright, snappy, full of fun."

ENID NEAL
"Life is real; life is earnest."

BEVERLY REHNBLOM
"Versatility's pin-up girl."

LEONE SARGEANT
"Beauty and brains—she has both."

MELVA TIEMENS
*"The higher the mountains, the broader
the view."*

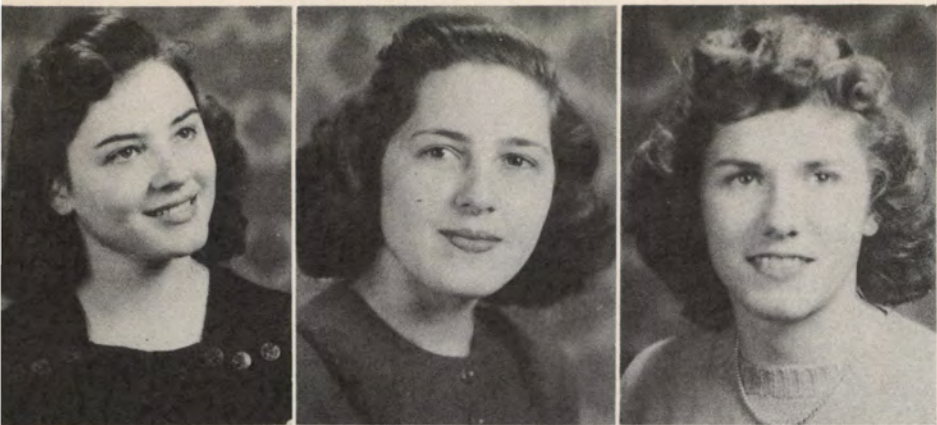
PHYLLIS VANDEBRAKE
"Where there's a will, there's a way."

ELLEN WESTERGAARD
"She casts an enviable mold for living."



SOPHOMORES

- President - - - - - ELLEN WESTERGAARD
 Vice-President - - - - - MARGARET RALSTON
 Secretary-Treasurer - - - - - LOIS EMME
 Student Council
 Representative - - - - - JOHN GRIFFIN



Betty Boles

Marjorie Bornholdt

Annette Carlson



Lucille Carlson

Priscilla Crow

Elinor Dieter



Eva Lynn Dietrich

Delores Ebert

Ruth Elliott

Lois Emme

Marilyn Gisel

Charlene Goetschius

Duane Hawthorn

Ruth Held

Boyd Henry

Audrey Hughes

Donna Irvine

Phyllis Irwin





Joan Johnson



Leonora Johnson

Marjorie Kasten



Dorcas Knapp

Patricia Kundert

Theodore Lekas

Dorothy Leonard

Mary McCoy

Margaret McDole

Mary Niemeyer

Helen Northrup

Vivian Peden

Doris Peterson

Marcella Poppen

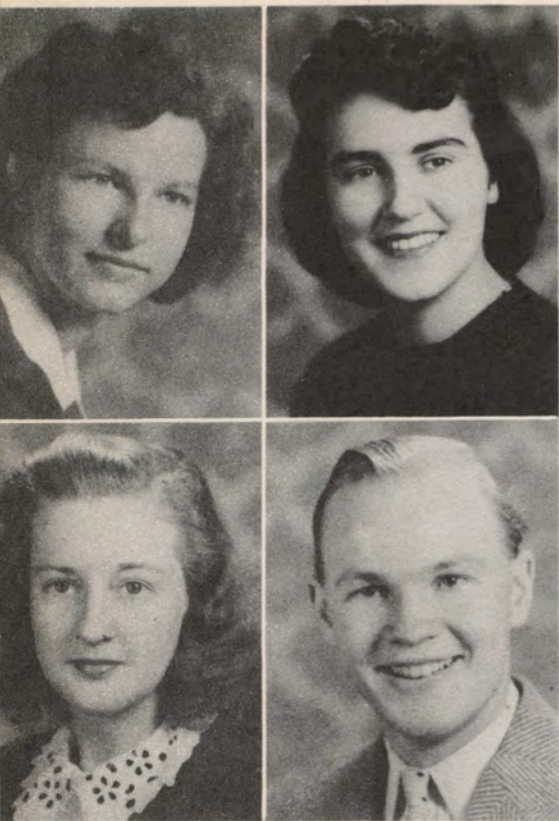
Margaret Ralston

Sylvia Ramaker

Louisa Schmidt

Carolyn Sernstrom





Charlotte Tagg

Ardis Verhoef

Darlene Vollink

Thomas Wikstrom



FRESHMEN

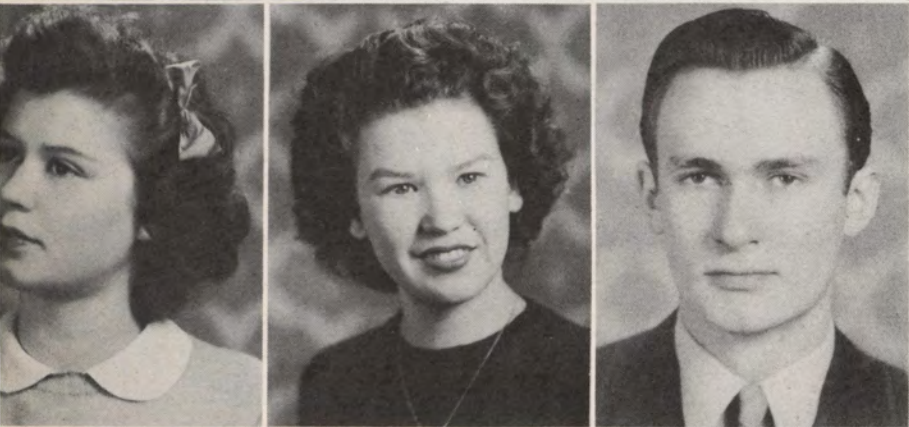
- President - - - - - DAVID COX
- Vice-President - - - - KATHERINE ROADMAN
- Secretary-Treasurer - - MARVEL HARDING
- Student Council Representative - - - PATRICIA WILSON
- (Second Semester) - - MARY JANE CONRAD



Emilio Arredondo

Harriet Baker

Lois Chapin



Mary Jane Conrad

Betty Jean Cosman

David Cox



Constance Crowley

Veneta DeWitt

Shirley Ewing

Leona Fagan

Beth Ferris

Helyn Fish

Evelyn Kuhlmann Fisher

Arnold Friis

Bethel Forsling

Gladys Gary

Thomas Grindberg

June Hanson





Marvel Harding



Dorothy Harms

Darlene Held



Katherine Held

Margaret Heumann

Mary Hill

Patricia Jeffries

Lovice Kingsbury

Ruth Kohrt

Stanley Lamfers

Phyllis Leeper

Lois Lind

Marilyn MacDougall

Lura McCoy

Jeanne Osbey

Shirley Pierson

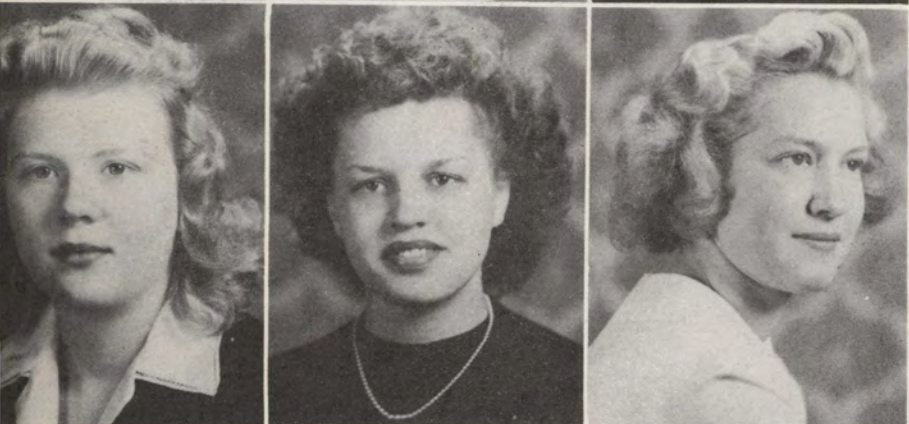
Paul Ralston

Howard Reinsch



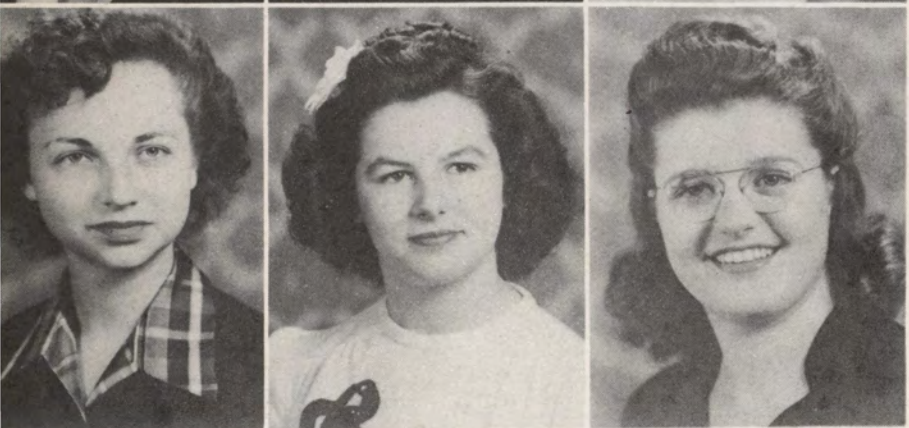


Barbara Rew



Donna Richards

Katherine Roadman



Ruth Saupe

Barbara Schmidt

Mary Lou Schultz

Donna Severson

Dorothy Sheeler

Arline Shepard

Charline Shepard

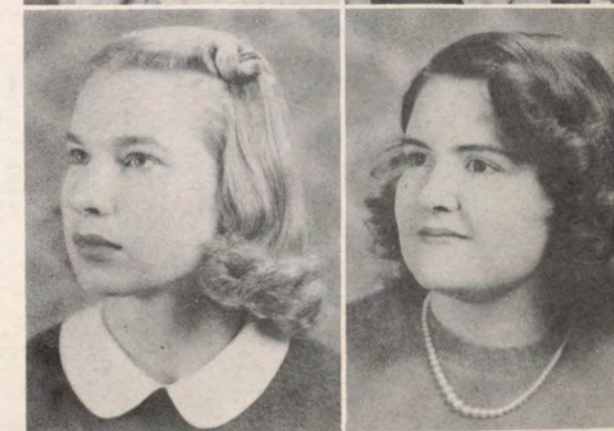
Leon Shortenhaus

Helen Travis

Lela Williams

Patricia Wilson

Barbara Young



SECOND SEMESTER STUDENTS

FRESHMEN

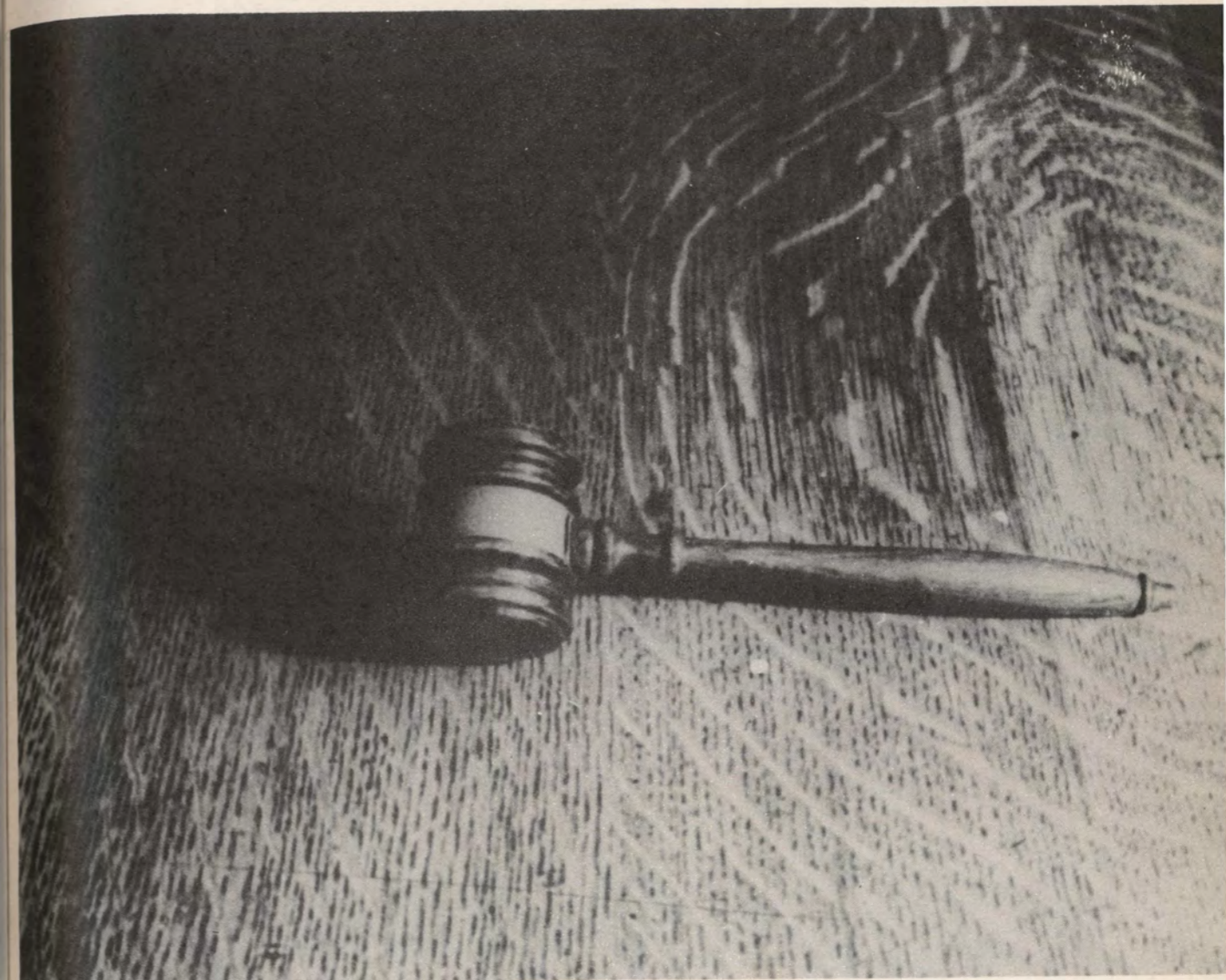
Lois Jean Arends - - - - - Little Rock, Iowa
Mildred Bachert - - - - - Sioux City, Iowa
John Balkema - - - - - Sioux City, Iowa
Bruce Brown - - - - - Inwood, Iowa
Patricia Eggleston - - - - - Sioux City, Iowa
Shirley Ewing - - - - - Onawa, Iowa
James Fribourgh - - - - - Sioux City, Iowa
Jack Hansen - - - - - Sioux City, Iowa
Thomas Kass - - - - - Sioux City, Iowa
Kaoru Kayahara - - - - - Honolulu, T. H.
Amy Mattson - - - - - Alta, Iowa
Nancy McDonald - - - - - Sioux City, Iowa
Mary Leone Trumbull - - - - - Sioux City, Iowa
Doris Mae Young - - - - - Sioux City, Iowa

SOPHOMORE

Glen Wolf - - - - - Archer, Iowa

UNCLASSIFIED

John Forry - - - - - Reading, Pennsylvania
Wilbur Hawley - - - - - Dakota City, Nebraska
Shamos Albert O'Shea - - - - - Baltimore, Maryland
Lucille Henderson Parry - - - - - Sioux City, Iowa
Donna June Summers - - - - - Sioux City, Iowa



ORGANIZATIONS



STUDENT COUNCIL

President (First Semester) - - - - - WILLO JEAN NIEMEYER

President (Second Semester) - - - - - FERNE DUNN OBYE

Secretary-Treasurer - - - - - MIRIAM COX

The Student Council is composed of four officers chosen by the student body, presidents and council representatives of each class, and delegates from the conservatory and W. S. G. A.

Many college functions are directed and promoted by this organization. Homecoming activities, college dances, Freshman-Sophomore Day, Clean-Up Day, and Walk-Out Day are sponsored by the council.



THE SIOUX

- Editor* - - - - - BEVERLY REHNBLOM
- Assistant Editor* - - - - - MARJORIE KASTEN
- Business Manager* - - - - - GUS LEASE
- Faculty Adviser* - - - - - THOMAS TWEITO
- Literary Editor* - - - - - MARY ELLEN SNYDER
- Senior Editor* - - - - - WILLO JEAN NIEMEYER
- Junior Editor* - - - - - ELLEN WESTERGAARD
- Class Editor* - - - - - ELINOR DIETER
- Women's Sports* - - - - - RUTH ELLIOTT
- Music Editor* - - - - - BONITA HAHN
- Dramatics Editor* - - - - - DAVID COX
- Photography Editor* - - - - - DORCAS VOIGT
- Photographers* - - - - - THOMAS WIKSTROM
LUVERNE JACOBS, A. S.
- Artist* - - - - - MARGARET RALSTON
- Typist* - - - - - KATHERINE ROADMAN

COLLEGIAN REPORTER

- Editor-in-Chief* - - - - - DORCAS KNAPP
- Associate Editor* - - - - - LOIS HELM
- Business Manager* - - - - - JOHN GRIFFIN
- Circulation Manager* - - - - - RUTH HELD
- Feature Writers* - - - - - WILLO JEAN NIEMEYER,
ELLEN WESTERGAARD, DORIS PETERSON, ELINOR DIETER,
MARCILLE BOHN, GLORIA ODEGARD, RUTH SAUPE.
- Reporters* - - - - - DOROTHY SHEELER,
VERA WANG, MARY ELLEN SNYDER, HARRIET KEITH, MAR-
GARET RALSTON, MARILYN EVANS, LOIS HELD, LOIS EMME,
DORCAS VOIGT, DAVID COX, DON LASUER, MELVA TIEMENS,
KATHERINE HELD.



AGORA

- President - - - - - FERNE DUNN OBYE
- First Vice-President - - - - - PHYLLIS DOWNEY
- Second Vice-President - - - - - LOIS HELM
- Secretary - - - - - VERA WANG
- Treasurer - - - - - DORCAS KNAPP
- Senior Representatives - - - - - BETTY MITCHELL
MARY ELLEN SNYDER
- Junior Representative - - - - - BETTY ANNE CAIRY
- Sophomore Representatives - - - - - ANNETTE GRAY CARLSON
MARJORIE KASTEN
- Freshman Representative - - - - - RUTH KOHRT

Agora, the largest organization on the campus, is composed of every girl enrolled at Morningside. Agnes B. Ferguson organized the club in 1914. Its purpose is to promote a closer fellowship among the coeds.

Numerous traditions of the organization are carried out each year: the Campus Sisters' Tea, the Carnival-Dance, the Agora edition of the Collegian Reporter, the Mother-Daughter Banquet, and a Christmas party.

Agora sponsored the first annual Leadership Dinner held this year at the Mayfair Hotel. Invitations were issued to all girls who held offices in campus organizations. Miss Mary Treglia was the guest speaker.

Agora operates through a representative board, the members of which are elected by popular vote of all college girls.



Obye

Downey

Helm

Knapp

Wang

W. S. G. A.

OFFICERS

- President - - - - - LOIS HELM
- Vice-President - - - - - BETTY LOU BECKWITH
- Secretary - - - - - SYLVIA RAMAKER



EXECUTIVE BOARD

- President of W. S. G. A. - - - - - LOIS HELM
- Kappa Zeta Chi Sorority - - - - - BETTY LOU BECKWITH
- Alpha Sigma Sorority - - - - - JOSEPHINE SHAWVER
- Kappa Pi Alpha Sorority (First Semester) - - - - - MELVA TIEMENS
- (Second Semester) - - - - - DOROTHY DAWSON
- Jones House - - - - - SYLVIA RAMAKER
- Loveland House - - - - - MARY ELLEN SNYDER
- Perry House - - - - - BETH FERRIS
- Weed House - - - - - ARLINE SHEPARD
- Cushing House (First Semester) - - - - - EVELYN KUHLMANN FISHER
- (Second Semester) - - - - - BARBARA SCHMIDT
- Faculty Member - - - - - DEAN ALVA TOLF

The Women's Self Governing Association formulates and administers the house rules and social regulations for all women in residence on the campus. A president of the association, the presidents of each of the eight college houses, and the Dean of Women make up the Executive Board which meets regularly once a week to discuss house problems, to plan inter-house activities and to care for other matters which may concern the policies and the general interests of resident women.

Each of the residence houses is organized under the following plan: The house director is provided by the college. A house president and a junior house director perform the duties of the president or house director in their absence. This group has executive power within the house. It determines general house policies, penalties for violation of rules by residents, and items that are to be referred to the general Executive Board for consideration and action.

Three of the eight houses are occupied by the Alpha Sigma, the Kappa Pi Alpha, and the Kappa Zeta Chi sororities. In addition the Perry, Cushing, and Weed Houses are for freshmen and the Jones and Loveland Houses are occupied by upperclassmen.

The girls in the residence houses are engaged in a great many activities. Probably the most successful this year was the song contest won by the Kappa Zeta Chi Sorority. Open house is held at least once a year by all of the houses, and a series of Sunday afternoon informal parties have been held this year for the College Training Detachment. Other activities include Christmas parties, the traditional Hanging of the Holly, intramural sports, and activities planned and executed by the girls within their own houses.



FUTURE TEACHERS' CLUB

OFFICERS

<i>President</i> - - - - -	HARRIET KEITH
<i>Vice-President</i> - - - - -	LOUISA SCHMIDT
<i>Secretary</i> - - - - -	ARLENE DORNBUSCH
<i>Faculty Advisers</i> - - - - -	MARCIA MCNEE LOIS GRAMMER

The Morningside Future Teachers' Club is an organization of students who are preparing for educational careers. The purposes of the club are to familiarize its members with the problems and responsibilities in the teaching profession, to better equip the members for their work in education, to cooperate with state and national education associations, and to raise the standards, influence, and prestige of the teaching profession. Membership is open to those who have completed or are enrolled in any professional course. The club is affiliated with the Iowa State Teachers and National Education Associations.

Meetings are held bi-monthly with guest speakers from the various educational fields.

PRE-ENGINEERS CLUB

FIRST SEMESTER

<i>President</i> - - - - -	JOHN GRIFFIN
<i>Vice-President</i> - - - - -	ROBERT BARBER
<i>Secretary</i> - - - - -	JAMES HAUCK
<i>Historian</i> - - - - -	GORDON HAWLEY

SECOND SEMESTER

<i>President</i> - - - - -	PAUL KERN
<i>Vice-President</i> - - - - -	BRUCE BROWN
<i>Secretary</i> - - - - -	JACK HANSEN
<i>Treasurer</i> - - - - -	ROBERT BARBER
<i>Historian</i> - - - - -	STANLEY LAMFERS
<i>Advisers</i> - - - - -	M. E. GRABER I. J. GWINN

The Pre-Engineers Club is an organization devoted to scientific pursuits and the promotion of good fellowship among those interested in science. It not only includes future engineers, but also those young men who are primarily interested in physical sciences.

The club has weekly luncheons in conjunction with its business meetings. As an additional project this year, the club members sponsored a basketball team.



PSI CHI

President - - - - - William Miller
Vice-President - - - - - Dorothy Wells
Secretary-Treasurer - - - - Ruth Ritland
Corresponding Secretary - - Marjorie Foster
Faculty Advisers - - - - Marcia McNee
 Dr. E. E. Emme



Psi Chi is the local chapter of the National Psychology Fraternity. The chapter at Morningside began as the Psychology Club and was organized in 1934. It was chartered by Psi Chi, the national fraternity, in 1939.

The purpose of the organization is the advancement of psychology here on the campus. Morningside is one of the three smaller colleges having this charter along with many universities and large colleges.

SIGMA TAU DELTA

The Morningside chapter of Sigma Tau Delta, national honorary English fraternity, is Gamma Beta. Programs at the monthly meetings this year included book reviews and discussions of current novels.



OFFICERS

President - - - - - MIRIAM COX
Vice-President - - MARY ELLEN SNYDER
Secretary-Treasurer - - JEANETTE KAHOUN
Faculty Adviser - - - - MIRAH MILLS

MEMBERS

Mary Ellen Snyder Jeanette Kahoun
 Miriam Cox Marjorie Foster
 Joan Elsinga Ferne Dunn Obye
 Rosemary Huxtable

KAPPA CHI

President - - - - - Don LaSuer
Vice-President - - - - - William Miller
Secretary - - - - - Coila Sieber
Treasurer - - - - - Earlene Schenck
National Secretary - - - - Dorothy Wells
Faculty Adviser - - Dr. William Scarborough



Kappa Chi is a fellowship group for students interested in Christian Service as a life work. Kappa Chi is in its sixth year on the Morningside campus and is one of six chapters in the national organization. This year there were ten members and five honorary faculty members.

COSMOPOLITAN CLUB

The chapter of the National Association of Cosmopolitan Clubs was started at Morningside in 1926. The club was organized to create a better understanding among students of various nationalities and races.

Once a month the club met this year and a meal typical of some foreign country was prepared by the members of the club. Irish, South-American, Chinese, French, and Negro menus were served.

President - - - - - Vera Wang
Vice-President - - - - Emilio Arredondo
Secretary-Treasurer - - - Mary Kobayashi
Advisers - - - Dr. and Mrs. Stanley Carson





BIOLOGY CLUB

FIRST SEMESTER

President - - - - - Kenneth Rollins
 Vice-President - - - - - Kay Deirup
 Secretary - - - - - Phyllis Thorngreen
 Treasurer - - - - - Vera Wang

SECOND SEMESTER

President - - - - - Kay Deirup
 Vice-President - - - - - Dorcas Voigt
 Secretary - - - - - Lyle Rachuy
 Treasurer - - - - - Rosemary Huxtable

The Biology Club, although the war has taken many of its members, is still a very active campus organization. The club met regularly on Thursdays this year. At each meeting luncheons were served by the members.

BOARD OF CONTROL

The Board of Control of Student Publications is composed of a membership of students and five faculty members. The purpose of the committee is to formulate the plans and policies of all publications which are published by the student body. The committee meets monthly for the purpose of reviewing publications issued the month past and to complete details for the publications for the month to come.

MEMBERS

Ira J. Gwinn	Willo Jean Niemeyer
Henry Kanthlener	Ellen Westergaard
Thomas Stephens	David Cox
Thomas Tweitto	Dorcas Knapp
T. N. McClure	John Griffin
Arlene Dornbusch	Beverly Rehnblom
Lois Helm	Gus Lease

YWCA

President - - - - - MARGARET RALSTON
 Vice-President - - - - - SYLVIA RAMAKER
 Secretary - - - - - EVA LYNN DIETRICH
 Treasurer - - - - - JOSEPHINE SHAWVER
 Adviser - - - - - MISS STELLA YATES

November 19, 20, 21—
 Ikota Conference, Sioux Falls.

November 26—
 Mary Cannon, South American Labor Leader.

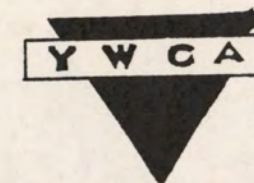
December 12—
 Installation of Officers and Breakfast.

December 13—
 Christmas Tea.
 Ruth Packard, Y Secretary to China.

February 7-11—
 Heart Sister Week and Party.

February 21—
 Dinner at City YWCA.

March 20—
 Party at City YWCA.





JONES HOUSE

President - - - - - EARLENE SCHENCK
 Junior House Director - - - - - IRENE HINRICHS
 Night Girl - - - - - VERA WANG
 House Director - - - - - MRS. ADAH JONES

Senior
 Vera Wang

Juniors
 Inez Harris
 Irene Hinrichs
 Enid Neal

Phyllis VandeBrake

Sophomores
 Carrol Cook
 Sylvia Ramaker
 Louisa Schmidt

Unclassified
 Earlene Schenck



LOVELAND HOUSE

President - - - - - MARY ELLEN SNYDER
 Junior House Director - MARY MARGARET WEATHERBY
 Night Girl - - - - - MARION SANDERS
 House Director - - - - - MARCIA MCNEE

Seniors
 Joan Elsinga
 Helen Dorothy Ruby
 Marion Sanders
 Mary Ellen Snyder

Juniors
 Mary Lou Chamberlin
 Mary Margaret Weatherby
 Lois White

Sophomores
 Marcella Poppen
 Shirley Tapley
 Florence Wilken

Freshman
 Shirley Ewing





ISHKOODAH

FIRST SEMESTER

President - - - - - KATHERINE ROADMAN
Vice-President - - - - - EVELYN KUHLMANN FISHER
Secretary-Treasurer - - - - - MARILYN MACDOUGALL

SECOND SEMESTER

President - - - - - LOVICE KINGSBURY
Vice-President - - - - - JEANNE OSBEY
Secretary-Treasurer - - - - - RUTH SAUPE
Agora Representative - - - - - RUTH KOHRT

Ishkoodah, the lively organization of freshman girls, had a very active year in 1943-44. Meetings were held twice a month at the three freshman houses and the student union. Ishkoodah members went Christmas caroling and held several parties during the year. The girls cooperated enthusiastically in all college affairs.



INTER-SORORITY COUNCIL

Chairman - - - - - PHYLLIS THORNGREEN
Secretary - - - - - HELEN ASHBY

Members

ALPHA SIGMA

Harriet Keith
 Marvel Lamb
 Dorcas Voigt
 Phyllis Thorngreen, Faculty Adviser

KAPPA PI ALPHA

Miriam Cox
 Helen Ashby
 Ellen Westergaard
 Sara VanHorne, Faculty Adviser

KAPPA ZETA CHI

Betty Lou Beckwith
 Leone Sargeant
 Roberta Held Hasek
 Ethel Murray, Faculty Adviser

The inter-sorority council was active only during the second semester of this year. Miss Phyllis Thorngreen, adviser of the Alpha Sigma sorority, was the presiding officer. The quota system, which revises the entire rushing system, was the most important legislation handled by this governing body during 1943-44.



ALPHA SIGMA

SORORITY

OFFICERS

FIRST SEMESTER

- President - - - - - Dorcas Voigt
- Vice-President - - - - - Harriet Keith
- Recording Secretary - - - - - Marvel Lamb
- Corresponding Secretary - - - - - Josephine Shawver
- Treasurer - - - - - Jane Garretson
- Critic - - - - - Bonita Hahn
- Chaplain - - - - - Vera Wang
- Pianist - - - - - Lois Roorda
- Usher - - - - - Eileen Guse
- Reporter - - - - - Naomi Murray
- Historian - - - - - Louisa Schmidt

SECOND SEMESTER

- President - - - - - Dorcas Voigt
- Vice-President - - - - - Harriet Keith
- Recording Secretary - - - - - Margaret McDole
- Corresponding Secretary - - - - - Leonora Johnson
- Treasurer - - - - - Jane Garretson
- Critic - - - - - Marvel Lamb
- Chaplain - - - - - Mary Ellen Snyder
- Pianist - - - - - Arlene Dornbusch
- Usher - - - - - Charlotte Tagg
- Reporter - - - - - Vera Wang
- Historian - - - - - Louisa Schmidt

The Alpha Sigma sorority, one of the three social sororities on the Morningside campus, has been quite active this year considering that many social activities have been curtailed because of the war. The social program has been varied with the girls entertaining both cadets and civilian boys of the campus and also having strictly "hen" parties.

Two former members of the sorority are now in the women's services of our country. Ruth Walker is a WAVE, and Faith Buchner is a member of the WASPS.

Members

- | | | |
|-------------------|-------------------|------------------|
| Luella Bruhn | Josephine Shawver | Arlene Dornbusch |
| Jane Garretson | Vera Wang | Louisa Schmidt |
| Marvel Lamb | Eileen Guse | Margaret McDole |
| Mary Ellen Snyder | Bonita Hahn | Leonora Johnson |
| Alice Shkurensky | Naomi Murray | Raeburn Voigt |
| Dorcas Voigt | Harriet Keith | Phyllis Orner |
| Lois Roorda | Betty Cosman | Charlotte Tagg |

Honorary Members.....Stella Yates

Mrs. Wallace McMartin
Mrs. W. S. Scarborough

Faculty Adviser.....Phyllis Thorngreen

House Director.....Stella Yates

KAPPA PI



ALPHA SORORITY

OFFICERS

FIRST SEMESTER

President - - - - - Willo Jean Niemeyer
Vice-President - - - - - Miriam Cox
Recording Secretary - - - - - Helen Ashby
Corresponding Secretary - - - - - Melva Tiemens
Treasurer - - - - - Miriam Cox
Sergeant-at-Arms - - - - - Helen Ashby
Critic - - - - - Vivian Peden
Hall Chairman - - - - - Ellen Westergaard
Chaplain - - - - - Betty Wicklund
Reporter - - - - - Doris Peterson
Social Chairman - - - - - Ellen Westergaard

SECOND SEMESTER

President - - - - - Miriam Cox
Vice-President - - - - - Helen Ashby
Recording Secretary - - - - - Dorothy Dawson
Corresponding Secretary - - - - - Willo Jean Niemeyer
Treasurer - - - - - Marion Sanders
Sergeant-at-Arms - - - - - Mary McCoy
Critic - - - - - Audrey Hughes
Hall Chairman - - - - - Mary Niemeyer
Chaplain - - - - - Ellen Westergaard
Reporter - - - - - Doris Peterson
Social Chairman - - - - - EvaLynn Dietrich

Candlelight flickering on floating daisies . . . traditional five-pounds parties more frequent . . . fuzzy stuffed animals . . . typewriters pecking away the tempo of the Saturday afternoon Metropolitan opera . . . daily outgo of mail to all corners—Texas, New York, San Francisco, and Florida . . . visits by fellows in marine greens, navy blues and army khaki . . . tables of bridge . . . Sunday morning breakfasts . . . service flags adorning doors . . . '43 and '44.

Members

Helen Ashby	Betty Wicklund	Lucille Carlson
Miriam Cox	Melva Tiemens	Eva Lynn Dietrich
Dorothy Dawson	Ellen Westergaard	Audrey Hughes
Willo Jean Niemeyer	Betty Boles	Phyllis Irwin
Marion Sanders	Marjorie Bornholdt	Mary McCoy
Mary Niemeyer	Vivian Peden	Doris Peterson
		Ardis Verhoef

Faculty Adviser.....Sara Van Horne

House Director.....Lois Grammer

KAPPA ZETA CHI

SORORITY

OFFICERS

FIRST SEMESTER

<i>President</i> - - - - -	- - - - -	- - - - -	Ferne Dunn Obye
<i>Vice-President</i> - - - - -	- - - - -	- - - - -	Betty Lou Beckwith
<i>Social Chairman</i> - - - - -	- - - - -	- - - - -	Betty Anne Cairy
<i>Recording Secretary</i> - - - - -	- - - - -	- - - - -	Betty Mitchell
<i>Corresponding Secretary</i> - - - - -	- - - - -	- - - - -	Jeanette Kahoun
<i>Treasurer</i> - - - - -	- - - - -	- - - - -	Marcille Bohn
<i>Librarian</i> - - - - -	- - - - -	- - - - -	Mary Lou Held
<i>Reporter</i> - - - - -	- - - - -	- - - - -	Leone Sargeant
<i>Chaplain</i> - - - - -	- - - - -	- - - - -	Lyla Mae Hansen
<i>First Critic</i> - - - - -	- - - - -	- - - - -	Joyce Roadman Scott
<i>Second Critic</i> - - - - -	- - - - -	- - - - -	Lois Held
<i>First Usher</i> - - - - -	- - - - -	- - - - -	Lois Helm
<i>Second Usher</i> - - - - -	- - - - -	- - - - -	Gloria Odegard
<i>First Directress</i> - - - - -	- - - - -	- - - - -	Ruth Ritland
<i>Second Directress</i> - - - - -	- - - - -	- - - - -	Roberta Hasek

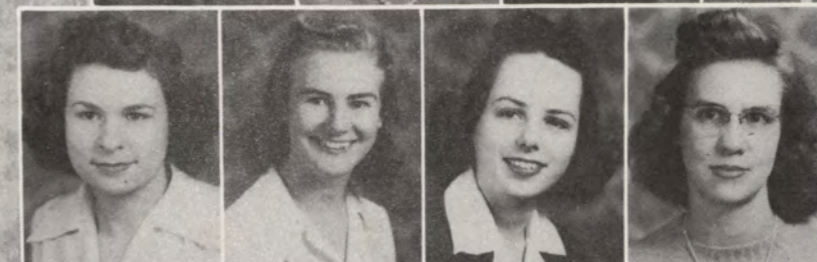
SECOND SEMESTER

<i>President</i> - - - - -	- - - - -	- - - - -	Betty Lou Beckwith
<i>Vice-President</i> - - - - -	- - - - -	- - - - -	Lois Helm
<i>Social Chairman</i> - - - - -	- - - - -	- - - - -	Evelyn Madsen
<i>Recording Secretary</i> - - - - -	- - - - -	- - - - -	Betty Anne Cairy
<i>Corresponding Secretary</i> - - - - -	- - - - -	- - - - -	Gloria Odegard
<i>Treasurer</i> - - - - -	- - - - -	- - - - -	Leone Sargeant
<i>Librarian</i> - - - - -	- - - - -	- - - - -	Helen Northrup
<i>Reporter</i> - - - - -	- - - - -	- - - - -	Lois Emme
<i>Chaplain</i> - - - - -	- - - - -	- - - - -	Beverly Rehnblom
<i>First Critic</i> - - - - -	- - - - -	- - - - -	Ferne Dunn Obye
<i>Second Critic</i> - - - - -	- - - - -	- - - - -	Lyla Mae Hansen
<i>First Usher</i> - - - - -	- - - - -	- - - - -	Darlene Vollink
<i>Second Usher</i> - - - - -	- - - - -	- - - - -	Ruth Elliott
<i>First Directress</i> - - - - -	- - - - -	- - - - -	Marilyn Gisel
<i>Second Directress</i> - - - - -	- - - - -	- - - - -	Joan Johnson

Faculty Adviser.....Ethel Murray
House Director.....Marie Liba

Members

Betty Lou Beckwith Ferne Dunn Obye Jeanette Kahoun Marilyn Gisel
 Lyla Mae Hansen Gloria Odegard Beverly Rehnblom Charlene Goetschius
 Roberta Held Hasek Ruth Ritland Leone Sargeant Ruth Held
 Mary Lou Held Marcille Bohn Elinor Dieter Joan Johnson
 Lois Helm Betty Anne Cairy Ruth Elliott Dorcas Knapp
 Evelyn Madsen Lois Held Lois Emme Helen Northrup
 Margaret Ralston Carolyn Sernstrom Darlene Vollink



ALPHA TAU DELTA

Alpha Tau Delta was founded in 1891 as the Othonian Literary Society. In 1924 all the literary societies on the campus were chartered as Greek letter organizations, and the Othos became the Tau Delts.

Today, because of the war, the fraternity has been forced into a temporarily inactive status. The fight for freedom has superseded the familiar course of college life. It would be impossible to list the complete service roll of the fraternity. The following roster includes the names of those Tau Delts in service who have been at Morningside within the experience of the present student body.

The fraternity is proud of the brothers in the service of our country. The ideals for which they fight are those which long have been the cornerstones of Alpha Tau Delta:

CHARACTER — CULTURE — BROTHERHOOD — LOYALTY

Army

Richard Bean
Robert Bennett
Charles Burow
William Cropley
Robert Danielson
Robert Eldridge
Duncan Harper
George Hartley
Darvin Hartman
Robert Held
Earl Hicks
Robert Hicks
Robert Jarvise
Warren Johnson
Francis Kingsbury
Stanley Marshall
John Maynard
Sterling Miller
Max Muckey
George McBride
William Power
Dale Robar
Roy Schellenger

Alfred Strozdas
Garrett Wallman
Dale Wright
Sherman Young

Navy

Robert Andrews
James Bolton
Earl Goodenow
Lowell Henry
Warren Kingsbury
Berton Kolp

John Kolp
Lewis Mahood
Laurin Snyder
Elmer VanderBerg
Freddie Wellmerling

Navy Air Force

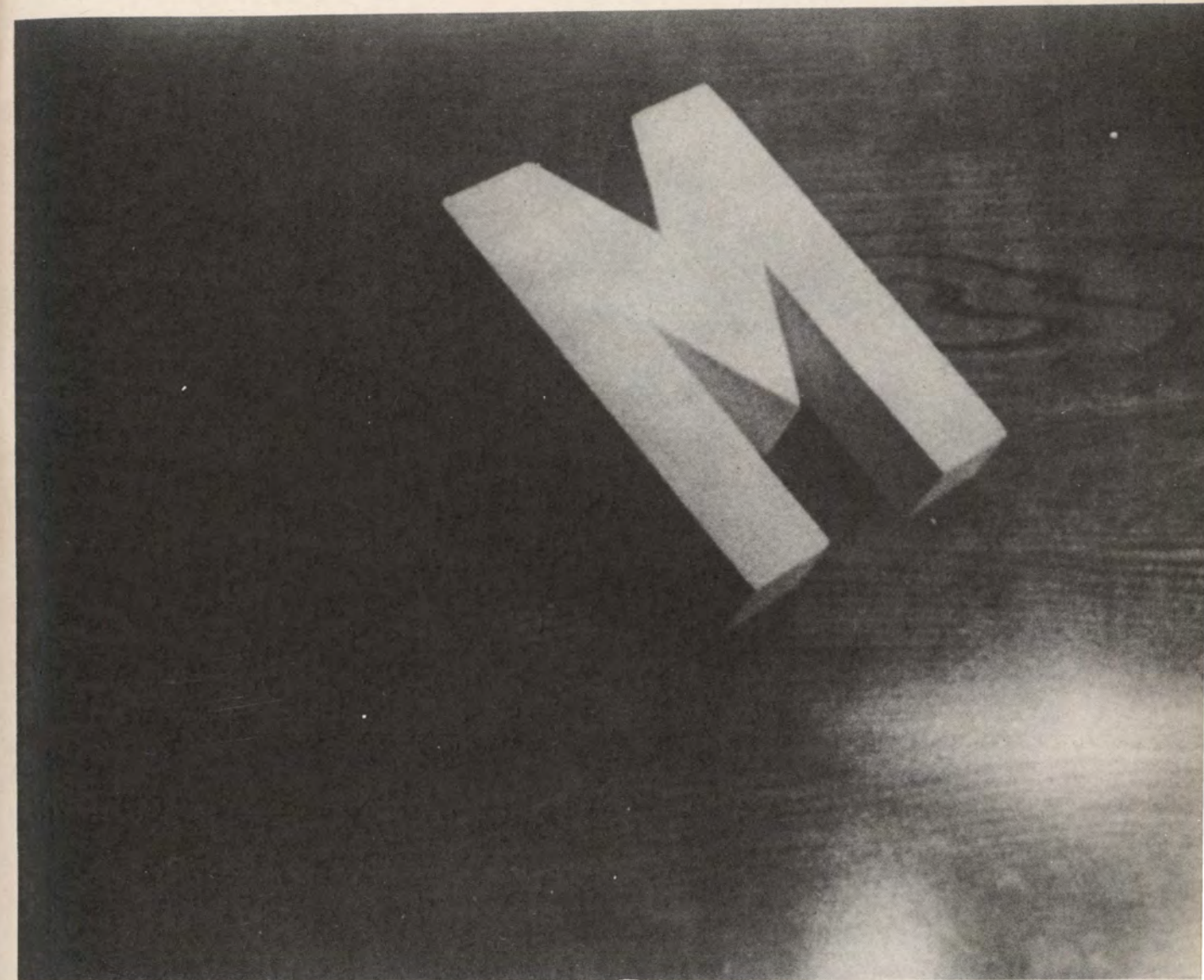
Harold Bomgaars
Joseph Stejskal

Marines

Richard Sullivan

Army Air Force

Samuel Bach
George Bornholtz
Donald Brink
Ralph Brown
Richard Corwin
Stephen deVries
Gail Hemmingsen
Lamar Jones
Eugene Kennedy
Donovan Leopold
Roger McKellips
Dean Nelson
Charles Obye
Leonard Rehder
Wilson Reynolds
Donald Rhoades
John Rogers
George Saunderson
Harold Taylor
Darrel Warner
James Morrison
Donald Nelson
Douglas Hempstead



ATHLETICS



MISS MARIE LIBA

Miss Marie Liba came to Morningside last year as head of the Department of Physical Education for Women. She attended the American College of Physical Education in Chicago, and received her degree from Wittenberg College, Springfield, Ohio, where she was a graduate assistant in physical education for two years. Her favorite sports are volleyball, badminton, and swimming. Under Miss Liba's supervision the Women's Athletic Department completed six seasonal sports, participated in individual sports, presented the spring festival sponsored by W.A.A., sponsored Health Week, conducted a tumbling club, gave a freshman party, and had a sport night. Miss Liba, through her friendliness, enthusiasm, and ability as a leader, has gained great popularity on our campus.



W. A. A.

The Women's Athletic Association, which is affiliated with the Athletic Federation of College Women, is an organization including girls who have completed one season of ten hours in any of the following sports: bowling, badminton, tennis, archery, basketball, volleyball, and softball.

Miss Liba is the adviser of this organization. Activities which the W.A.A. sponsors during the year are tournaments in all seasonal sports, the spring festival, the Yale-Harvard basketball game, overnight hikes, picnics, a freshman party, and a tumbling club. W.A.A. this year also had a sport night with Briar Cliff College girls as guests. The women's sports program is controlled by the W.A.A. board which consists of the director of physical education for women and the officers of W.A.A. They are as follows:

<i>President</i>	- - - - -	LYLA MAE HANSEN
<i>Vice-President</i>	- - - - -	LOIS HELD
<i>Secretary</i>	- - - - -	LOIS HELM
<i>Treasurer</i>	- - - - -	ROBERTA HASEK
<i>Awards Chairman</i>	- - - - -	FERN OBYE

SWEATER WINNERS

The highest award W.A.A. confers upon a girl is the presentation of a white school sweater. A girl must have ten seasons of sports, and it is a symbol of good sportsmanship, scholarship, and leadership. Sweater winners this year are Lois Helm, Lois Held, and Lois Emme.

INTRAMURALS

Intramural tournaments were held this year in volleyball, basketball, badminton, and softball. Other sports which girls participated in were archery, tumbling, bowling, and tennis.

The volleyball season was very successful with the Kappa Zeta Chi sorority capturing the championship. All sororities and houses were represented in this tournament, as were the freshman city girls. A volleyball team composed mostly of physical education majors and minors played in the City Recreational League and played several exhibition games during the season.

The badminton season was climaxed with a singles and doubles tournament. Miriam Cox was the victor of this event.

On January 14 the Morningside coeds battled through the Yale-Harvard basketball game. Yale-Harvard is the traditional game played every year by the girls completing a season in basketball. They are selected for their playing ability and sportsmanship. This year Yale won the game by the score, 24-15.

The softball season ended with a tournament between the sororities, houses, and city girls.





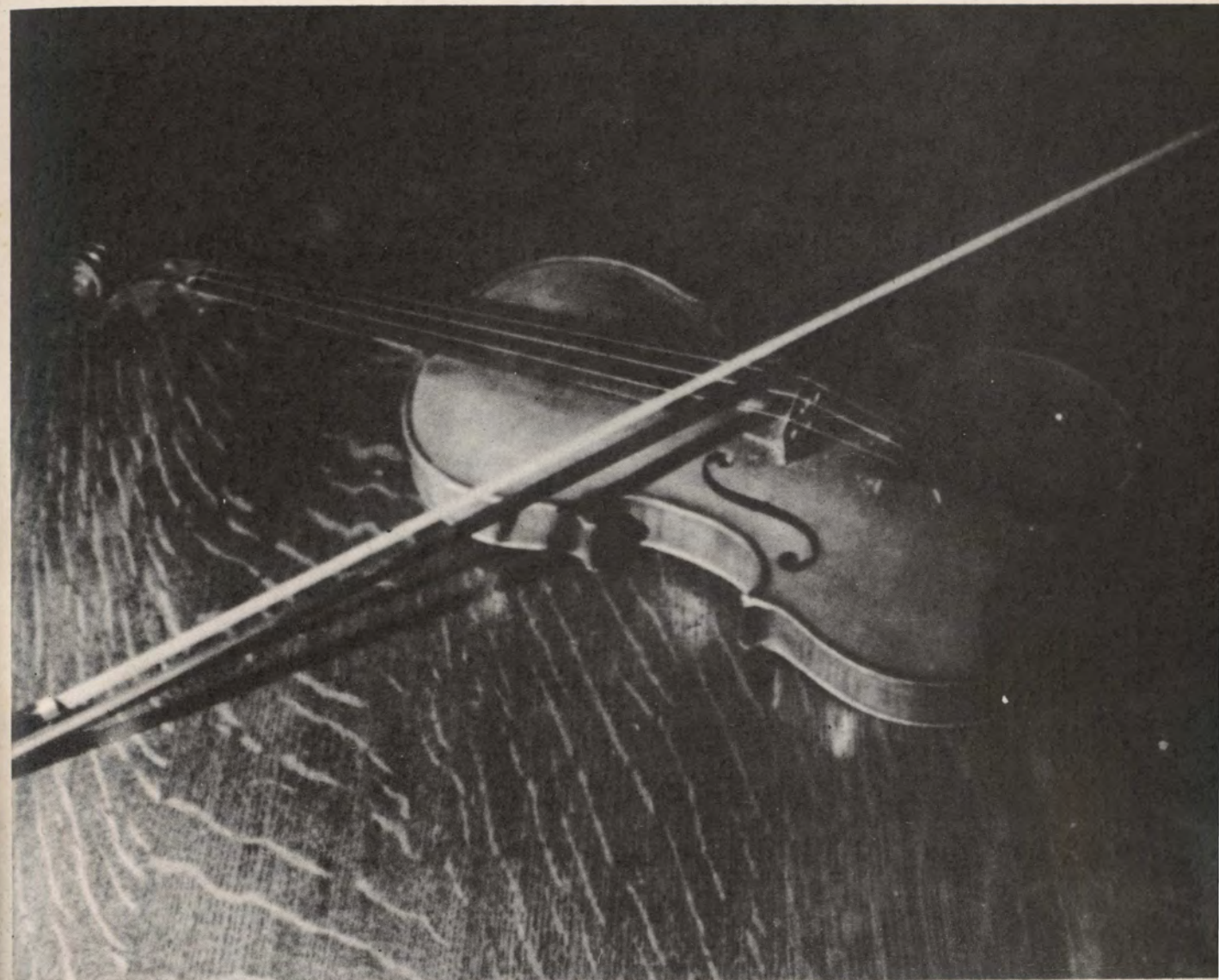
SPRING FESTIVAL

SPRING FESTIVAL

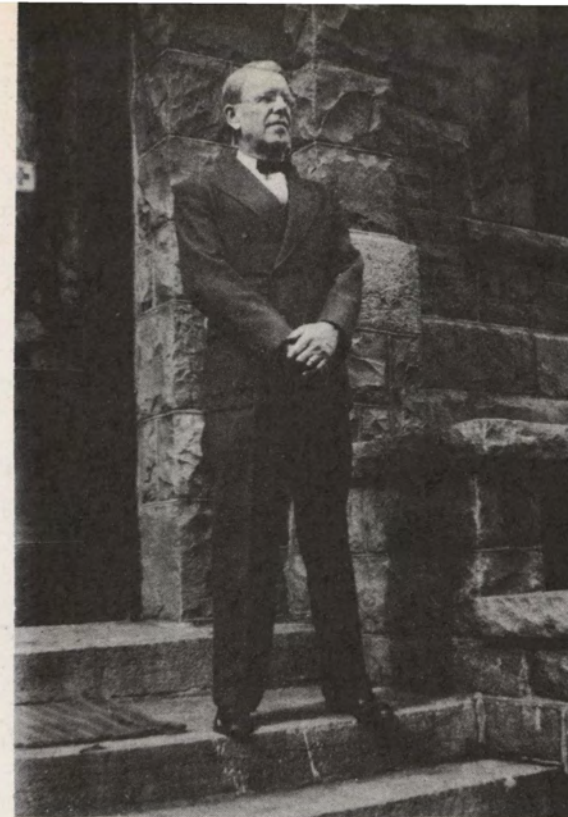
In the spring the Department of Physical Education for Women presents a dance festival sponsored by W.A.A. The spring festival, "Jim Jiggs," was under the direction of Miss Marie Liba.

This year the festival represented the four seasons—summer, fall, winter, and spring. The program was made up of tap, interpretive, and folk dancing, ballet, calisthenics, and tumbling. All were performed in costume. A chorus of the participants provided background music for the dances. The freshman and sophomore girls in the physical education classes, the physical education major students, and the tumbling club members made this display of talent possible.

At the spring festival the May Queen was crowned. The Queen, a freshman girl, is chosen by a vote of the entire student body. The Queen this year was Darlene Held. She with her attendant, Katherine Roadman, was drawn onto the stage by the ballet dancers in a flower-covered cart to be acclaimed Queen of the Festival.



MUSIC



PAUL MAC COLLIN

Professor Paul MacCollin, Director of the Conservatory of Music at Morningside, is the conductor of the nationally known Morningside College Choir.

This year the Professor has, through his continual efforts, made the choir grow and kept it an active part of campus life. Although there was a "man-power shortage," and the choir did not make a tour, the organization has gone on to achieve great heights of perfection as in former years.

Mr. "Mac," as he is known to all his friends and students, has done much to make the conservatory what it is today. His interest in the advancement of music, and his willingness to cooperate at all times, his wit and humor, and his ability as a conductor have made him well-liked by everyone. Through his efforts, too, the Sioux City Concert Course has grown and has become one of the outstanding musical activities in this territory.

In addition to being Head of the Morningside College Conservatory, Mr. MacCollin is an outstanding vocal instructor.



MADRIGAL SINGERS

The madrigal singers were active during the holiday season, providing music for chapel programs and for other Sioux City organizations. Those included in the group are Mrs. MacCollin, Luella Bruhn, Helen Dorothy Ruby, Josephine Shawver, Gus Lease, Tom Wikstrom, and Mr. MacCollin.

BAND

The Morningside College Band under the capable direction of Jack Elton is one of the peppiest organizations of Morningside. The band played chiefly for chapel programs during this year. Its novelty numbers have especially entertained the students.

At the present time the personnel is smaller because of the war; however the instrumentation is excellent.



MORNINGSIDE COLLEGE CHOIR

The choir this year has been especially handicapped by the lack of men's voices, but despite this it has retained its usual excellency of quality under Professor MacCollin's direction. The choir has taken an important part in Thursday chapels. It also gave the twenty-fifth presentation of the "Messiah" with symphony accompaniment. The choir still is the "heart" of the conservatory and of the college.

Sopranos

Mrs. MacCollin
Jean Arends
Betty Lou Beckwith
Luella Bruhn
Priscilla Crow
Mary Conrad
Dorothy Dawson
Arlene Dornbusch
Shirley Ewing
Beth Ferris
Gladys Gary
Eileen Guse
Dorcas Knapp
Phyllis Leeper
Mary Norris
Doris Peterson
Marion Sanders
Donna Severson
Arline Shepard
Charline Shepard
Mary Ellen Snyder

Mary Leone Trumbull
Eileen Weyer
Florence Wilken
Evelyn Walker

Altos

Constance Crowley
Bonita Hahn
Patricia Jeffries
Harriet Keith
Lois Lind
Amy Mattson
Muriel Miller O'Connor
Phyllis Orner
Vivian Peden
Shirley Pierson
Marcella Poppen
Margaret Ralston
Beverly Rehnbloom
Katherine Roadman
Lois Roorda
Helen Dorothy Ruby

Josephine Shawver
Barbara Schmidt
Mary Lou Schultz
Charlotte Tagg
Shirley Tapley
Melva Tiemens
Helen Travis
Ellen Westergaard
Betty Wicklund

Men's Voices

Anton Becker
Robert Bornholdt
Arnold Friis
James Hauck
Gus Lease
Leroy Mathwig
Paul Ralston
Leon Shortenhaus
Ted Lekas
Thomas Wikstrom





SIoux CITY CONCERT COURSE

The Symphony Orchestra is the basis of the Concert Course in Sioux City. During the past year many noted soloists have appeared here as guest artists with the orchestra under the direction of Henri Pensis. This year the Concert Course included the following artists: Isaac Stern, one of America's most promising violinists; The Ballet Theater; a renowned Russian Ballet; Marian Anderson, the world famous Negro contralto; Sidney Foster, an outstanding young pianist; Luboshutz and Nemonof, duopianists of great fame; and Marshall Moss, another talented violinist.

SIoux CITY SYMPHONY ORCHESTRA

The Sioux City Symphony Orchestra is sponsored by the Sioux City Civic Music Association, and is under the inspiring guidance of Henri Pensis. Through Mr. Pensis' constant efforts and brilliant conducting the symphony has become one of the most outstanding musical organizations in Northwest Iowa.

The Symphony is a civic group. It is composed of professional musicians from Sioux City and the surrounding territory, and augmented by a few of the more advanced music students.



MU PHI EPSILON

<i>President</i>	- - - - -	LOIS ROORDA
<i>Vice-President</i>	- - - - -	JOSEPHINE SHAWVER
<i>Recording Secretary</i>	- - - - -	LUELLA BRUHN
<i>Corresponding Secretary</i>	- - - - -	FLORENCE WILKEN
<i>Alumnae Secretary</i>	- - - - -	BETTY JEANNE WICKLUND
<i>Treasurer</i>	- - - - -	ENID NEAL
<i>Historian</i>	- - - - -	DOROTHY LEONARD
<i>Chaplain</i>	- - - - -	BONITA HAHN
<i>Warden</i>	- - - - -	ARLENE DORNBUSCH
<i>Chorister</i>	- - - - -	HELEN DOROTHY RUBY
<i>Adviser</i>	- - - - -	FAITH WOODFORD

Phi Zeta Chapter of Mu Phi Epsilon, the national music honor sorority at Morningside, was organized November 9, 1939. Mu Phi Epsilon endeavors to raise the scholastic and musical standards of all conservatory students. It offers an opportunity for individual musical performances, and it provides social and musical activities for music students. Mu Phi Epsilon promotes local musical events, and its members serve on contest committees.

TRUMPET TRIO

This year a new organization has been formed on the campus, the trumpet trio. This group, although new, has been popular with the college students. The trio is made up of three girls—Bonita Hahn, Donna Severson, and June Hanson.

STUDENT PIANO TRIO

Gladys Marie Gary	- - - - -	Violin
Josephine Shawver	- - - - -	Violin-cello
Gloria Odegard	- - - - -	Piano

This string ensemble is in constant demand by organizations throughout the city as well as by those on the campus. It has played for both formal and informal occasions including a season's engagement at the Knife and Fork Club.

GIRLS' TRIO

The girls' vocal trio is one of our most popular small organizations. Its repertoire consists of popular numbers of all types. The girls entertained at college dances and other social affairs throughout the year. Doris Peterson, Annette Gray Carlson, and Beverly Rehnblom are the members of this group.



DRAMATICS



MRS. ORVILLE B. KRAEMER

The Department of Speech was a very active part of Morningside this year. In addition to the plays presented to the public, Mrs. Kraemer, who headed the department, directed many interesting class projects. Several one-act plays were written, directed, and played by members of her classes. The Dramatic Production class artistically designed and constructed several miniature stages with settings. Students of the department presented three monologues, a speech, a sketch, a pantomime, and several readings to an appreciative chapel audience on October 19.

Mrs. Kraemer's classes have been designed to make the student versatile in composing and presenting to the public speeches, plays, readings, and pantomimes.

SHUBERT ALLEY

CAST

<i>Christina Holt</i>	- - - - -	Mary Niemeyer
<i>Fay Holt</i>	- - - - -	Beth Ferris
<i>Hester Matthews Holt</i>	- - - - -	Inez Harris
<i>Beulah Snyder</i>	- - - - -	Vivian Peden
<i>Elsie Alexander</i>	- - - - -	Marilyn Evans
<i>Anita Spiegelglass</i>	- - - - -	Gloria Odegard
<i>Miss Elliott</i>	- - - - -	Miriam Cox
<i>Rita Wallace</i>	- - - - -	Marcille Bohn
<i>Nancy Ann Galveston</i>	- - - - -	Beverly Rehnblom
<i>Helen Galveston</i>	- - - - -	Annette Gray Carlson
<i>Florence Galveston</i>	- - - - -	Sylvia Ramaker
<i>Hattie Williams</i>	- - - - -	Evelyn Madsen
<i>Lucia Bennett</i>	- - - - -	Margaret Ralston
<i>Madge Holm</i>	- - - - -	Doris Peterson
<i>Patricia Allgood</i>	- - - - -	Darlene Vollink
<i>Poppy Nixon</i>	- - - - -	Elinor Dieter
<i>Lorraine Royce</i>	- - - - -	Patricia Jeffries
<i>Miss Shuman</i>	- - - - -	Evelyn Kuhlmann Fisher
<i>Nellie</i>	- - - - -	Bonita Hahn

"Shubert Alley" is a play for women written by Mel Dinelli. It was first presented in Hollywood.

A dramatic "success story" is one way to describe this play, but it is much more than that, for it touches every highlight of drama and comedy in the driving urge to attain life's ambition. The action of the prologue supposedly takes place after the drop of the curtain on a highly successful "first night" performance on Broadway. The star of the occasion is Chris. She steps to the footlights, and in a short speech thanks the audience for its enthusiastic approval. "But you are not the only audience I should thank tonight. There are others . . . other ears I should like to reach . . . other forces to whom I am indebted for my first Broadway appearance . . . those who knowingly, or unknowingly, helped me reach this stage tonight. And so I ask you to join me as I go back—." The lights dim out and the curtain rises on the first rung of the ladder of Chris' experiences in her march to stardom.

"Shubert Alley"



"The Long Retreat"



"Girls Must Talk"

FUN AND FANTASY

The Long Retreat

CAST

<i>Nora Bailey</i>	- - - - -	Bonita Hahn
<i>Stephen Bailey</i>	- - - - -	Gus Lease

Girls Must Talk

CAST

<i>Miss Deedee</i>	- - - - -	Miriam Cox
<i>Miss Marie</i>	- - - - -	Marcille Bohn
<i>Gertie</i>	- - - - -	Doris Peterson
<i>Ruth</i>	- - - - -	Helen Ashby
<i>Betty</i>	- - - - -	Beverly Rehnblom
<i>Annie</i>	- - - - -	Jane Garretson

"Fun and Fantasy" was presented for chapel entertainment on Tuesday, February 29, by the Speech Department. Two one-act plays, "The Long Retreat" by Julius Saltzman and "Girls Must Talk" by Paul T. Gantt, were presented.

"The Long Retreat" is a fantasy concerning death, the aim of which is to create a weird and startling effect. "Girls Must Talk," a sparkling comedy full of amusing situations and clever lines, shows that all women, even dress shop mannequins, just must express themselves.

At press time the Collegiate Players were planning to present the three-act play, "When's Your Birthday?"

MORNINGSIDE 1943-44

Another college year has sped swiftly by, leaving only its host of memories to distinguish it from other years past. Memories of effervescent freshmen with their gay green caps . . . of cadets singing as they marched to and from classes . . . W. A. A. initiates with blackened eyes and plaid shirts and skirts that didn't match . . . girls serving as student body presidents.

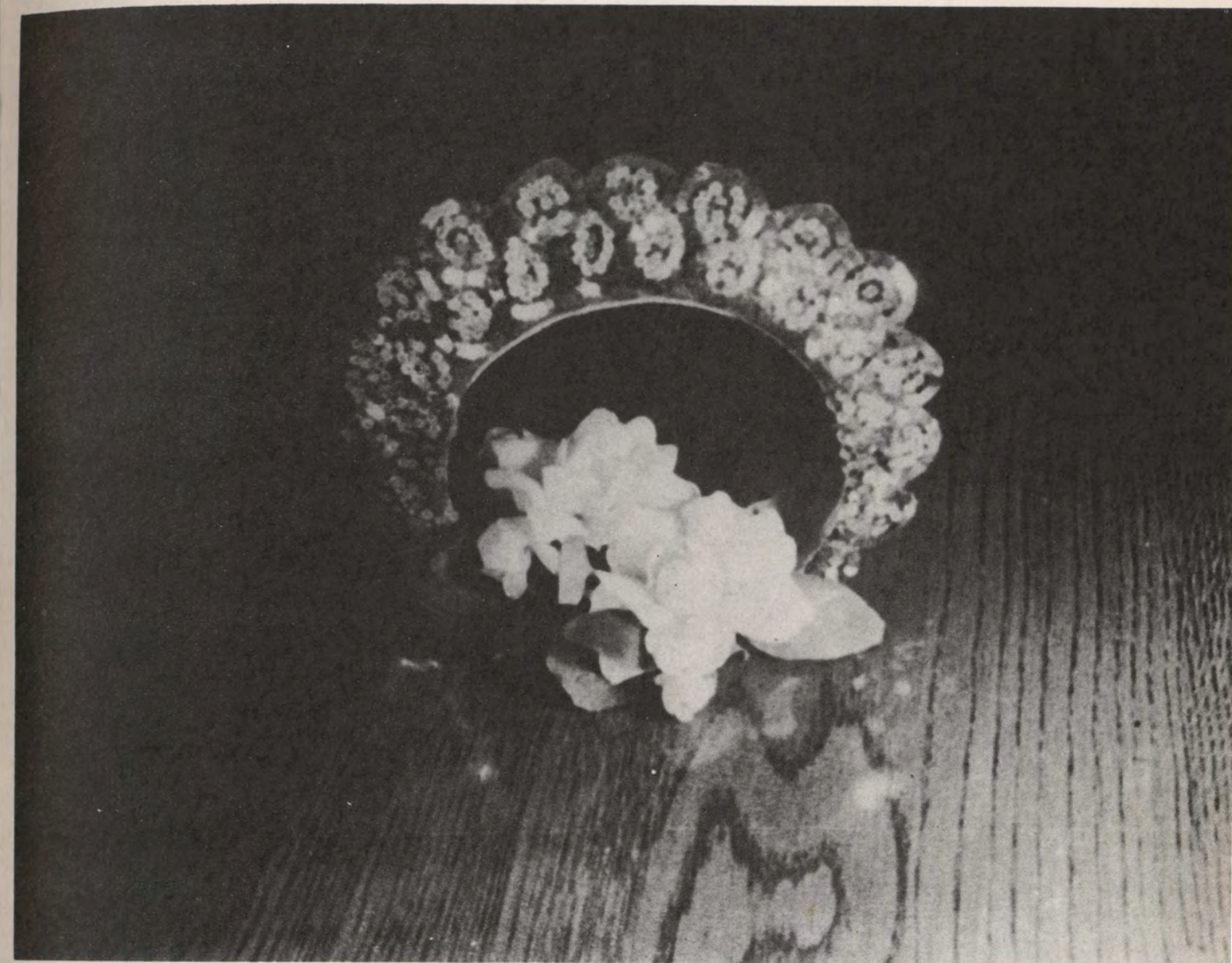
Memories of restoring the barn to a significant place in our college activities . . . college parties . . . club meetings . . . cadet nurses.

Memories of Thursday chapels . . . the college choir . . . letters and visits from our students in the service . . . engagements and marriages.

Memories of music . . . Marian Anderson . . . the Messiah . . . faculty and student recitals.

Memories of Tuesday assemblies . . . fun and fantasy from the Dramatic Department . . . guest speakers . . . student debates.

Memories to be tagged "Morningside 1943-44" and stored in the memory treasure chest for further reflection in years to come.



FEATURES

HOMECOMING QUEEN





Willo Jean Niemeyer



Mary Ellen Snyder

HOMEcoming ATTENDANTS



Darlene Held

Katherine Roadman

FESTIVAL QUEEN AND ATTENDANT



SIoux QUEEN

Helen Ashby



Katherine Roadman



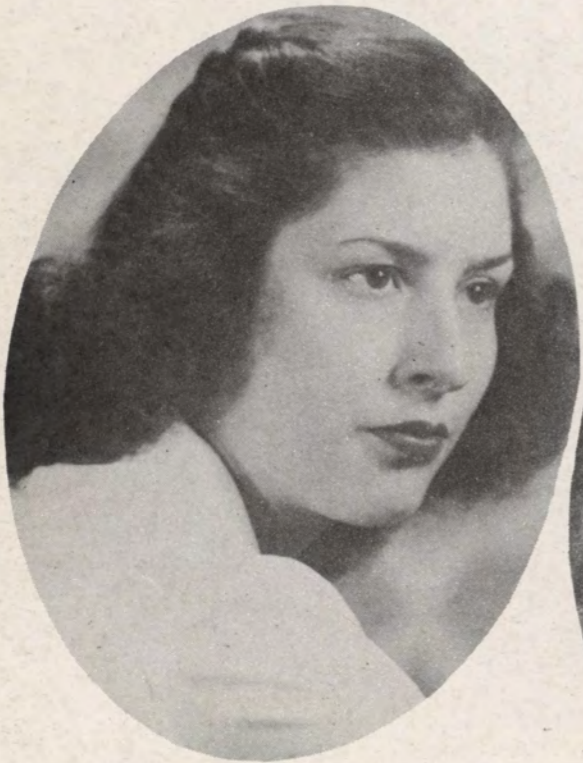
Ruth Elliott



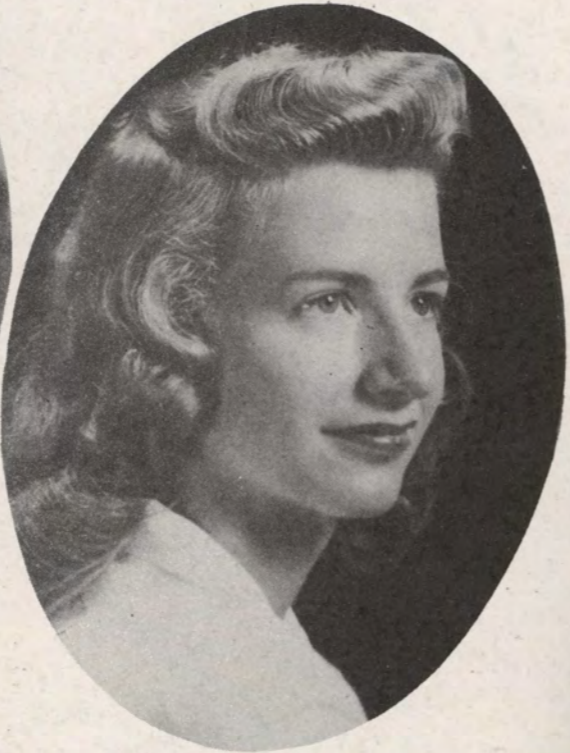
Betty Cosman

ATTENDANTS

WHO'S WHO

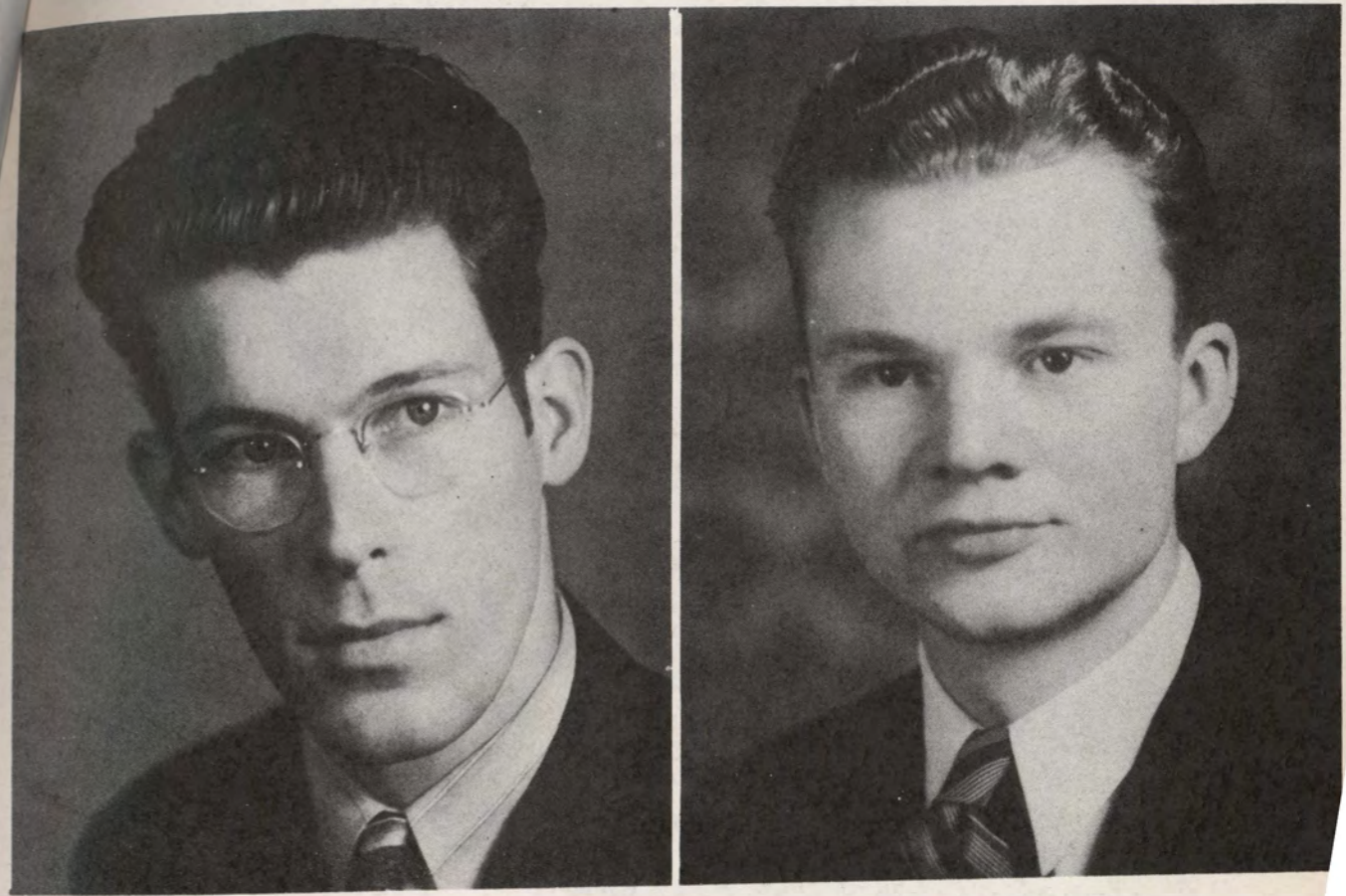


Lois Held



Joyce Roadman Scott

HEALTH QUEEN AND ATTENDANT





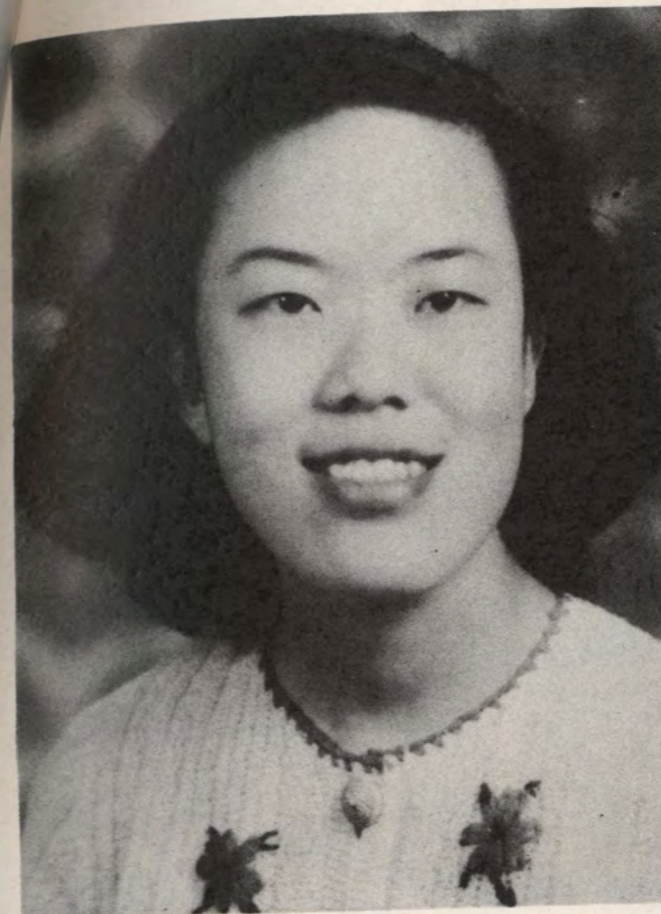
WILLO JEAN NIEMEYER

Student body president, president of the Pi's.
A capable and conscientious leader.



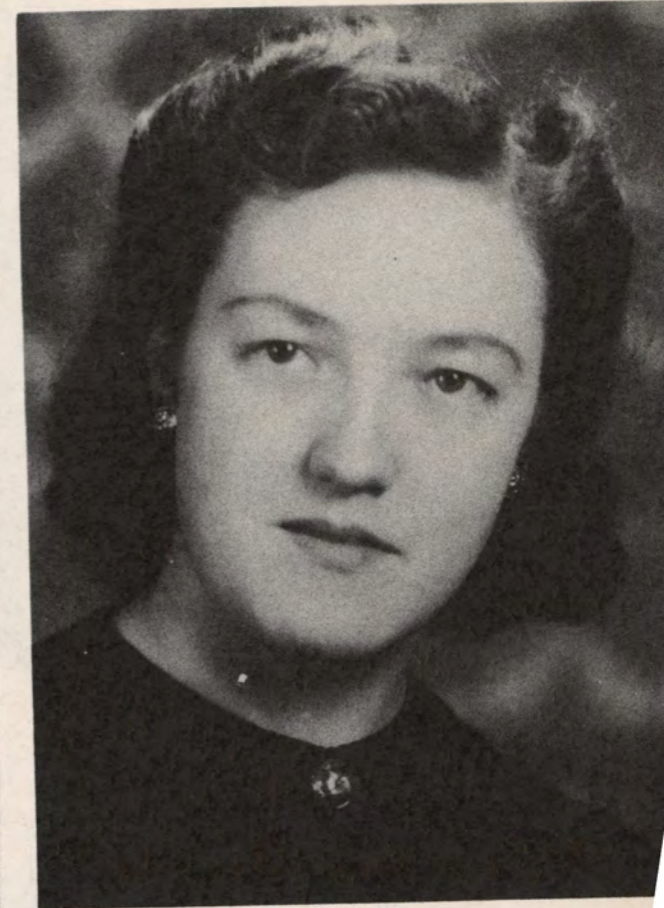
FERNE DUNN OBYE

Worthy recipient of many honors. "Miss
Morningside," student body president,
president of the Zets and Agora.



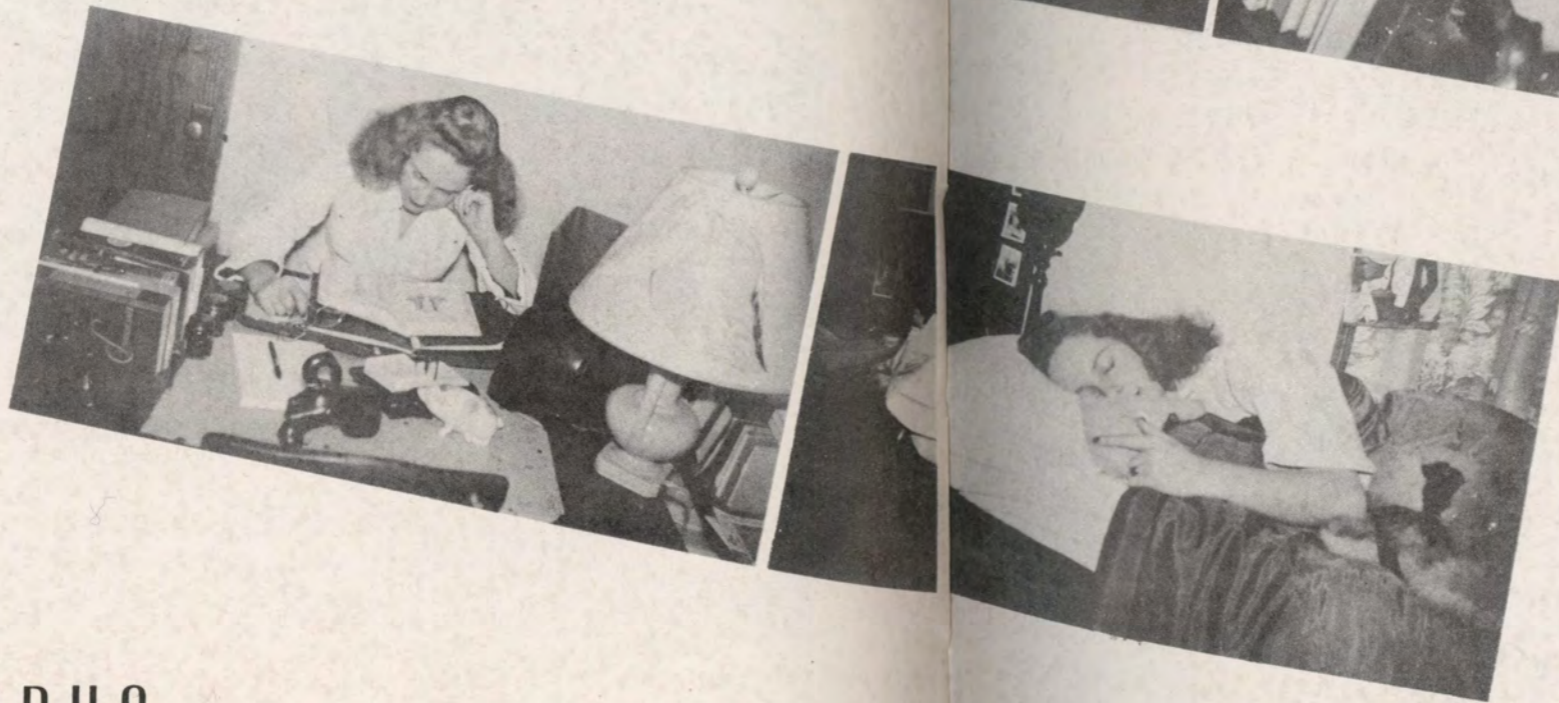
VERA WANG

Active in many campus organizations.
friend to everyone.



DOROTHY WELLS

Recognized for her scholastic achievements
and for her work in Kappa Chi, Psi
Chi, and Cosmopolitan Club.



ON THE CAMPUS





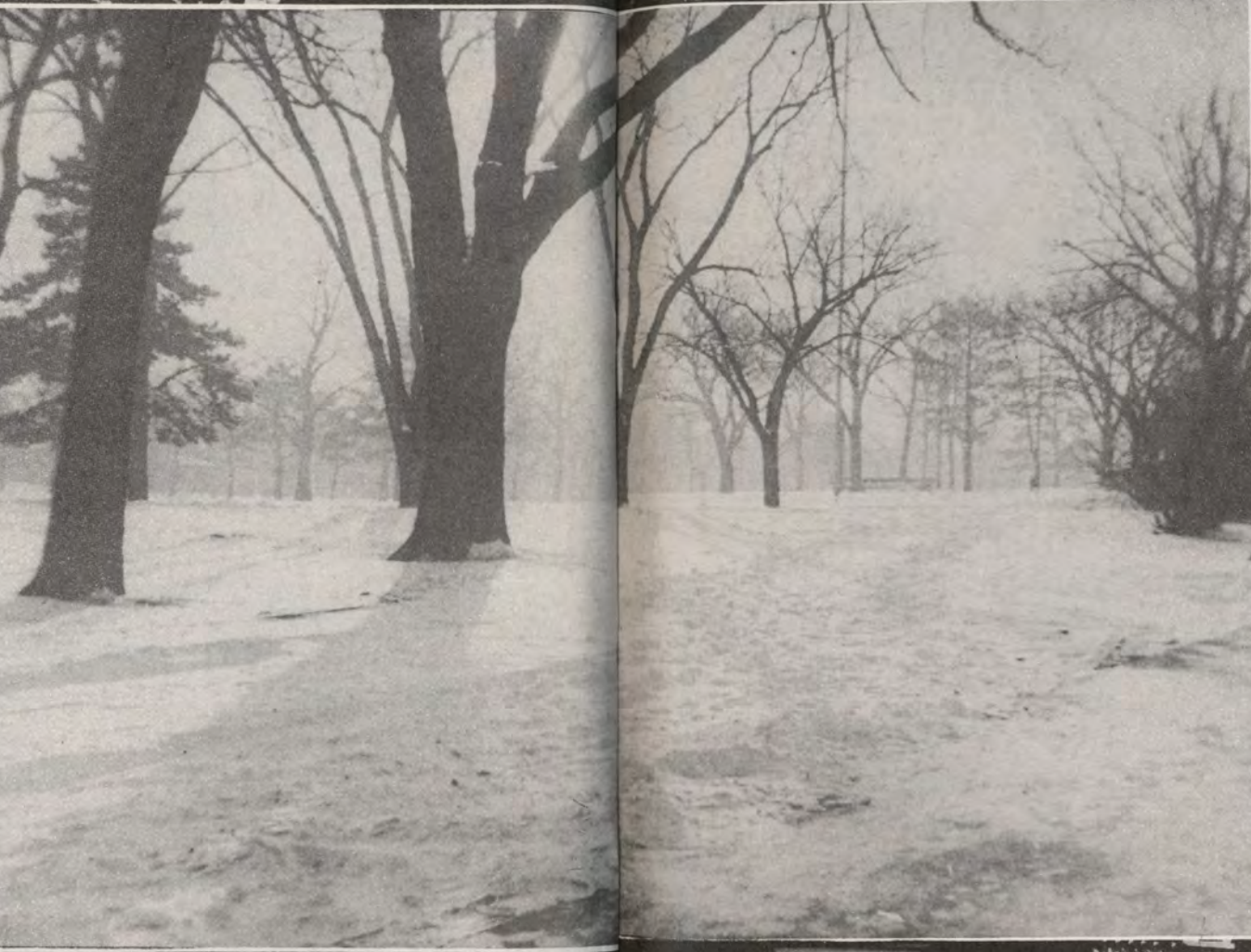
"The Things That Mean So Much to Me"

*Kappa Zeta Chi
Kappa Pi Alpha
Alpha Sigma*



"At Eight O'clock In the Morning"







To Our Boys in the Service

We students left at Morningside have not become accustomed to your absence, although there are daily reminders that you are gone—little things like college parties, empty seats in chapel, and missing the sound of your voices in the college choir.

Other students have accepted responsibilities which normally would have been yours. We who remain are carrying on in the best way we can, but we cannot take your places. No one can. We are all looking forward with eagerness to the day when you will return to fill your own places, to accept the responsibilities and honors which rightfully are yours.

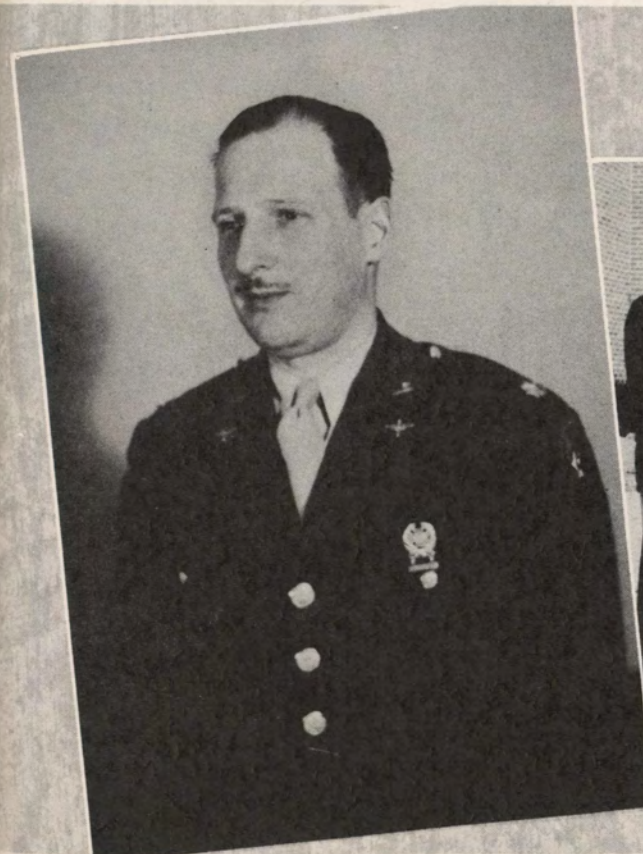
"Mizpah"



THE MILITARY

THE 81st C.T.D.

The presence of the cadets and officers of the 81st Training Detachment has given a definitely military air to the campus of Morningside College. The sound of marching feet and the sight of men in uniform have become a customary part of our daily existence. Although the cadets maintain strict military discipline throughout the week, they have cooperated with college students for many social events during the week-ends.





The Barracks

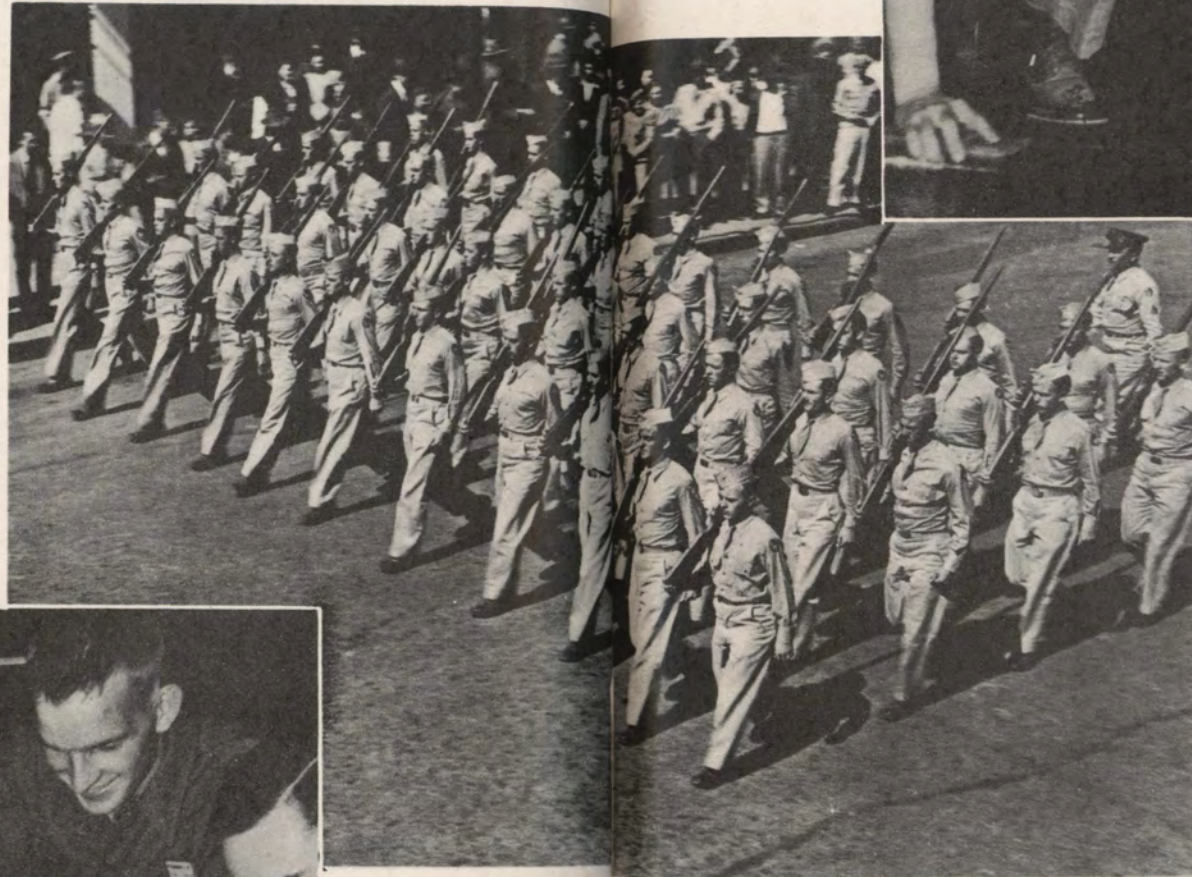


The College



Miss Arkwright, 81st C. T. D. Dietician

On Parade



Making a Clean Front

All In An Evening's Work .

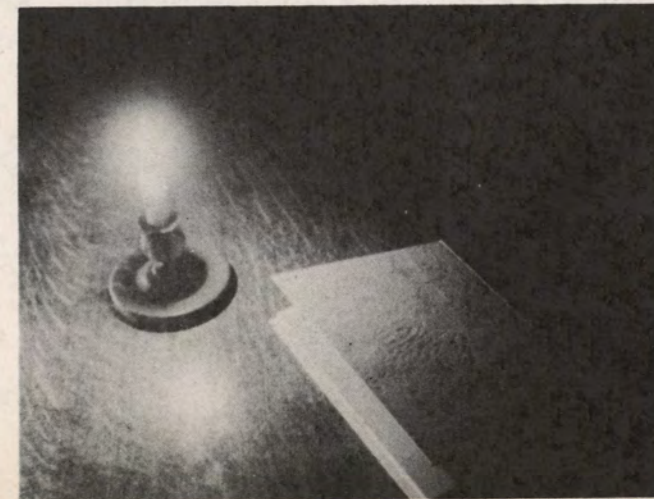




*Most Recent Military Addition to Morningside—
the Cadet Nurses*

CALENDAR OF EVENTS

- September 13-16*New Student Days and registration.
- October 1*Freshman-Sophomore Day, Student Council Dance at the Gym.
- October 15-16*Homecoming—Song Contest, Coronation of the Queen, Faculty Open House, Homecoming Dance.
- October 17*“Wake Up America” broadcast.
- October 25*Leadership Dinner.
- October 29*W. A. A. Overnight Hike.
- November 6*Health Dance.
- November 19*College play, “Shubert Alley.”
- November 24-29*Thanksgiving vacation.
- December 14*Chapel program of Christmas music
- December 15*Ishkoodah Carol Sing.
- December 16*Agora Christmas Party at the Barn.
- December 17-Jan. 3*.....Christmas vacation.
- January 24-28*Final exams for first semester.
- February 11*Y. W. C. A. Valentine Party.
- February 18*Agora All-student Party at the Barn.
- February 29*Chapel of “Fun and Fantasy” by the Dramatic Department.
- March 22*Sorority rushing.
- April 3*Beginning of Religious Emphasis Week.
- April 6-11*Easter vacation.
- April 22*Agora Carnival.
- May 13*Agora Mother-Daughter Banquet.
- May 28*Baccalaureate.
- May 30*Commencement.



Serving Since 1915

THALLAS
 "House of Flowers"




Sixth and Nebraska Streets
 Office Tel. 8-3595 Greenhouse 5-5541

**BEN FRANKLIN
 STORES**

4006 Morningside Ave. Peters Park
 "The Dime Store at
 Peters Park"
 Everything from Five cents to
 One Dollar and Up
 T. L. SCHAEFER, Proprietor

Diamonds Silverware
 Watches Jewelry



418 Pierce St.
 Phone 5-8318 Sioux City, Iowa

Compliments of

BUSH CLEANERS

"Just Off the Campus"

1417 Morningside Avenue
 Phone 6-7355 Sioux City, Ia.

STUDENTS' STORE

Make Our Drug Store Your
 Drug Store


You Will Find Lowest Prices In Town, Plus that Personal Touch
 with Super Service Added

**BARNEY'S MORNINGSIDE
 PHARMACY**

THE REXALL DRUG STORE

**SECURITY
 NATIONAL BANK
 of Sioux City**

Member F. D. I. C.



**WOODBURY COUNTY
 SAVINGS BANK**

EAT
 with the College crowd at
**DUSTY'S
 PARK LUNCH**
 PETERS PARK

**GRAYSON'S
 SUITS ME**

•
 Fourth and Douglas
 Sioux City, Iowa

Diamond Merchants
 Silversmiths

Compliments of
Ben's & Company
 Jewelers
 Phone 5-8225 Sioux City, Ia.

Children a Specialty
Weddings - Groups
Portraits

Robert's Studio

"Exclusive Portraits"

"The Gift of Remembrance"

539 Badgerow Building
Phone 8-4726
Sioux City, Iowa

Drink a Glass of MILK for PEP AND GOOD HEALTH

MILK AND ICE CREAM DEALERS
OF SIOUX CITY

Flowers for All Occasions



FERRIS FLORIST

Warrior Hotel
Phone 8-7554

FRANK'S CAFE

Women cooks have a style of cooking which appeals to our restaurant-going public. The food tastes like a home cooked meal and that means a lot.

GLASS FRONT

607 Pierce St. Sioux City

Sioux City Stationary Company

COMMERCIAL STATIONERS

PARTY FAVORS
413 Nebraska Street

Compliments
of a
Friend

WAR QUIZ

What is the lowest cost wartime transportation?
(Answer—inverted below)

Operated by: INTERSTATE TRANSIT LINES

**OVERLAND
GREYHOUND
LINES**



PAUL A. WARNER
President and General Manager

ADAIR-WARNER PRINTING CO.

PRINTING WITH SERVICE

516 Sixth Street

Phone 8-7831

Sioux City, Iowa

COMPLIMENTS OF

MOLSKOW PHARMACY

John Molskow, Proprietor

Phone 6-6914

2004 S. St. Aubin

Sioux City, Iowa

BUY THE BEST FOODS
AT

VAN EATON'S

O.P. SKAGGS
Efficient Service
FOOD System STORES

This Is 1944
Make It a **Victory Year**
Buy More War Bonds and Stamps at
This Bank

The
Toy National Bank
SIOUX CITY, IOWA

Shop at Peters Park

FREDELL FROCKS

Next to P. O.

Phone 6-5026

Open Saturday Evenings

SCHWARZ'S
Luncheonette

ANDERSON'S BAKERY

Morningside's High-Class
Pastry Shop
At Peters Park
Phone 6-5966

Compliments
of

Morningside
Self-Serve

ALL THE BEST
PICTURES WILL PLAY
AT YOUR

ESQUIRE
THEATRE

Morningside
Savings
Bank

COMPLETE BANKING
SERVICE

Dwight Hauff Sporting Goods Co.

Agent for

511 Pierce St.

A. J. Spalding & Bros.

Sioux City, Iowa

Up to Date Athletic Equipment

Telephone 8-1877

The Favorite Candy of the Northwest . . .

LA FAMA Chocolates

ONE OF A FAMILY OF FAMOUS CHOCOLATES

Made by

JOHNSON BISCUIT COMPANY

Sioux City, Iowa

TELL THE WORLD!

During the 30 months since Pearl Harbor nearly everything has gone up in price except Gas and Electricity.

Sioux City Gas & Electric Co.

A Self-Supporting, Taxpaying Business

THE
Council Oak Stores

Better Foods for Better Living

IOWA NEBRASKA SOUTH DAKOTA MINNESOTA

PLEASE PATRONIZE OUR
ADVERTISERS.



From the Four Corners of the
Earth . . . Twenty-four
Hours a Day . . .

comes the latest news in the field of foreign affairs
politics sports local and state news
editorial comments news from Washington by world
famous political analysts! All brought to you hot off the
wire so that you may be constantly abreast of the times!
For news when it is news read . . .

THE SIOUX CITY JOURNAL
and **JOURNAL-TRIBUNE**
Plus the Big
SUNDAY JOURNAL

Bottled
in
Sioux City



by the
Chesterman
Co.

5c

AN OLD AMERICAN CUSTOM . . .

—Helping the other fellow!

—and it has always been the policy of this bank to assist our customers, and all who come to us, in every way that a modern bank can serve the varied needs of a busy and growing community. We are anxious to cooperate with you in every way possible. Call on us for any banking service.

FIRST NATIONAL BANK

IN SIOUX CITY

Member Federal Deposit Insurance Corporation

Quality with Good Service
at the

House of Hamburgers

Mrs. Slocum

Fountain Service
Drugs, Sundries, Toiletries,
Magazines

Campus Pharmacy

W. J. Shane, Prop.

1423 Morningside Ave. Phone 6-9271

Compliments of

Bonebrake's Cafe

Corner of Peters Park

Morningside

Mr. W. M. Jones - Jr. Morning Side College.

(Evelyn H. Harrow)

daughter of Milo (Alb) Jones
& Virginia

(former Brown - mother was a Salter
owner of Mountain Hotel
Daily Inn City)

This book given
as a gift to help in history
of Morning Side college + the times
during World War II

Spring Festival and Military
pictures--Courtesy of the
81st C. T. D.

