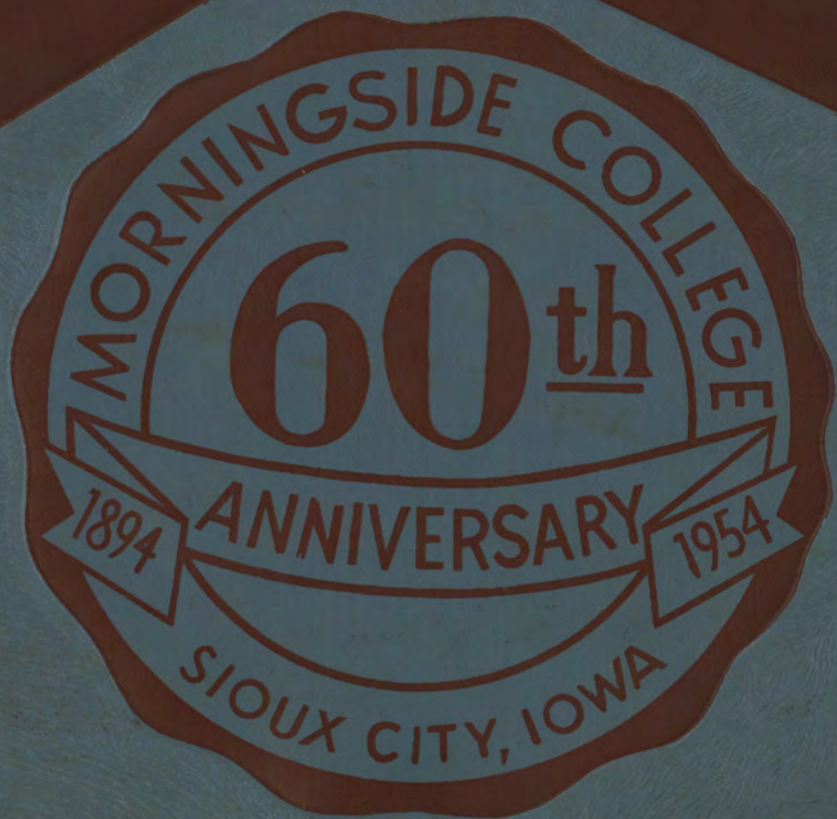


# Sioux





84.56.3

100





Conservatory  
in winter time

*Student Yearbook of*  
**Morningside College**  
Sioux City, Iowa



# Sioux

Vol. 55

1954

## Staff

Editor-in-Chief.....Art Barrett

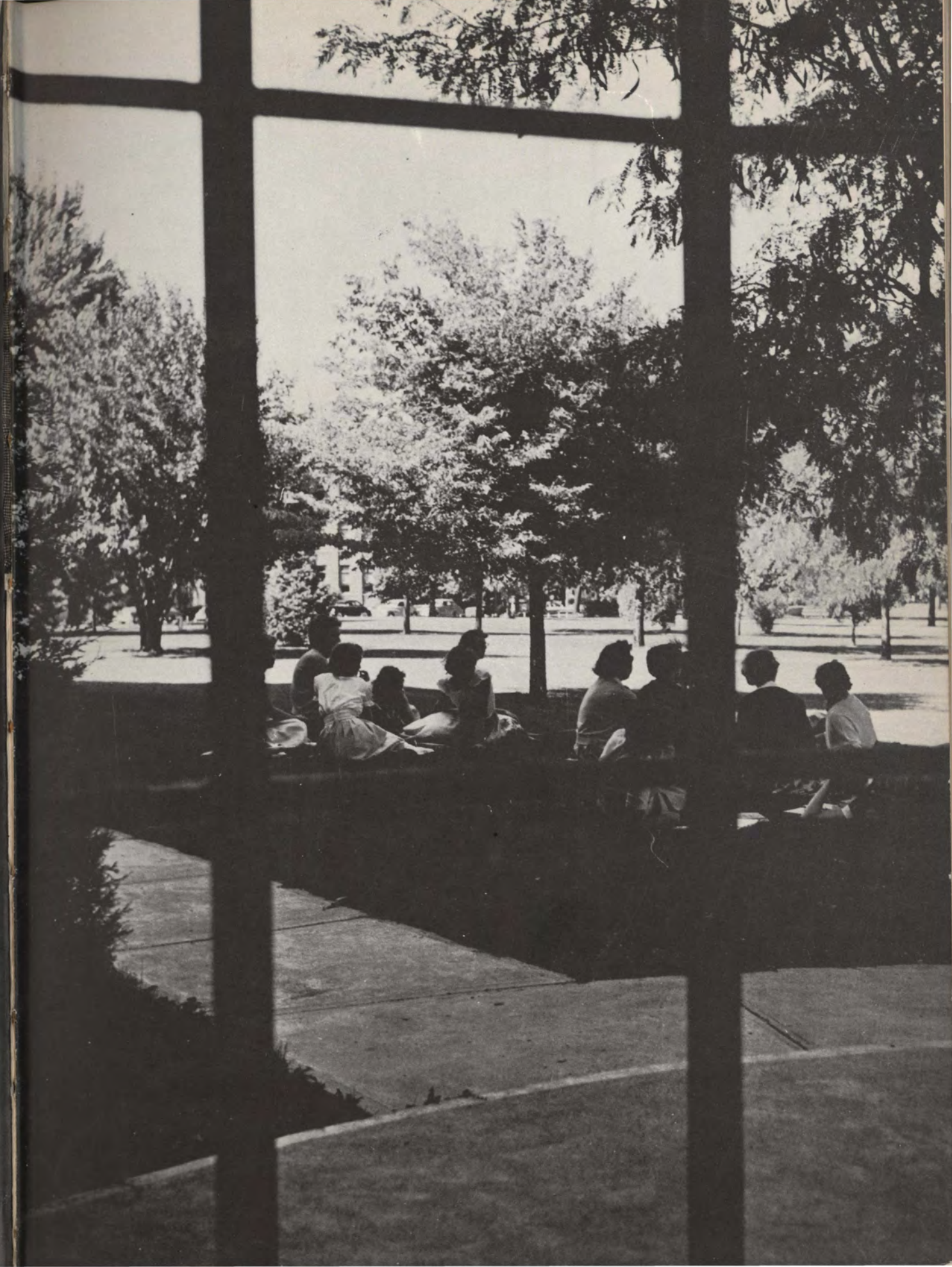
Assistant Editor.....Ruth Grindberg

Associate Editors.....Pat Thacker  
Gretchen Jensen  
Jean Ernst

Cover.....George Graning

Photographer.....Art Barrett

Entrance to Student Union and Men's Dorm







Theodore Bauer  
Clifford Bowman

D  
e  
d  
i  
c  
a  
t  
i  
o  
n

The 1954 Sioux is proudly dedicated to Professors Theodore Bauer and Clifford Bowman for their untiring service to the students of Morningside College both academically and socially.

## Contents

Campus Views

Administration

Student Body

Sports

Fraternities

Sororities

Organizations

Arts

Highlights

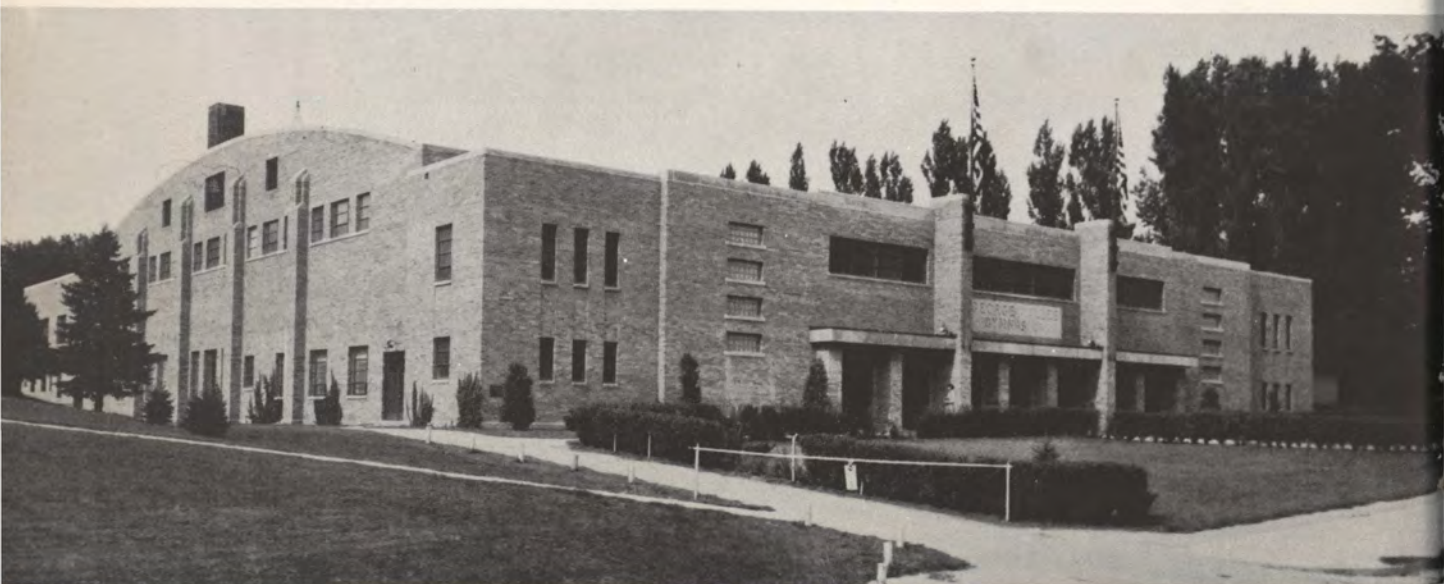




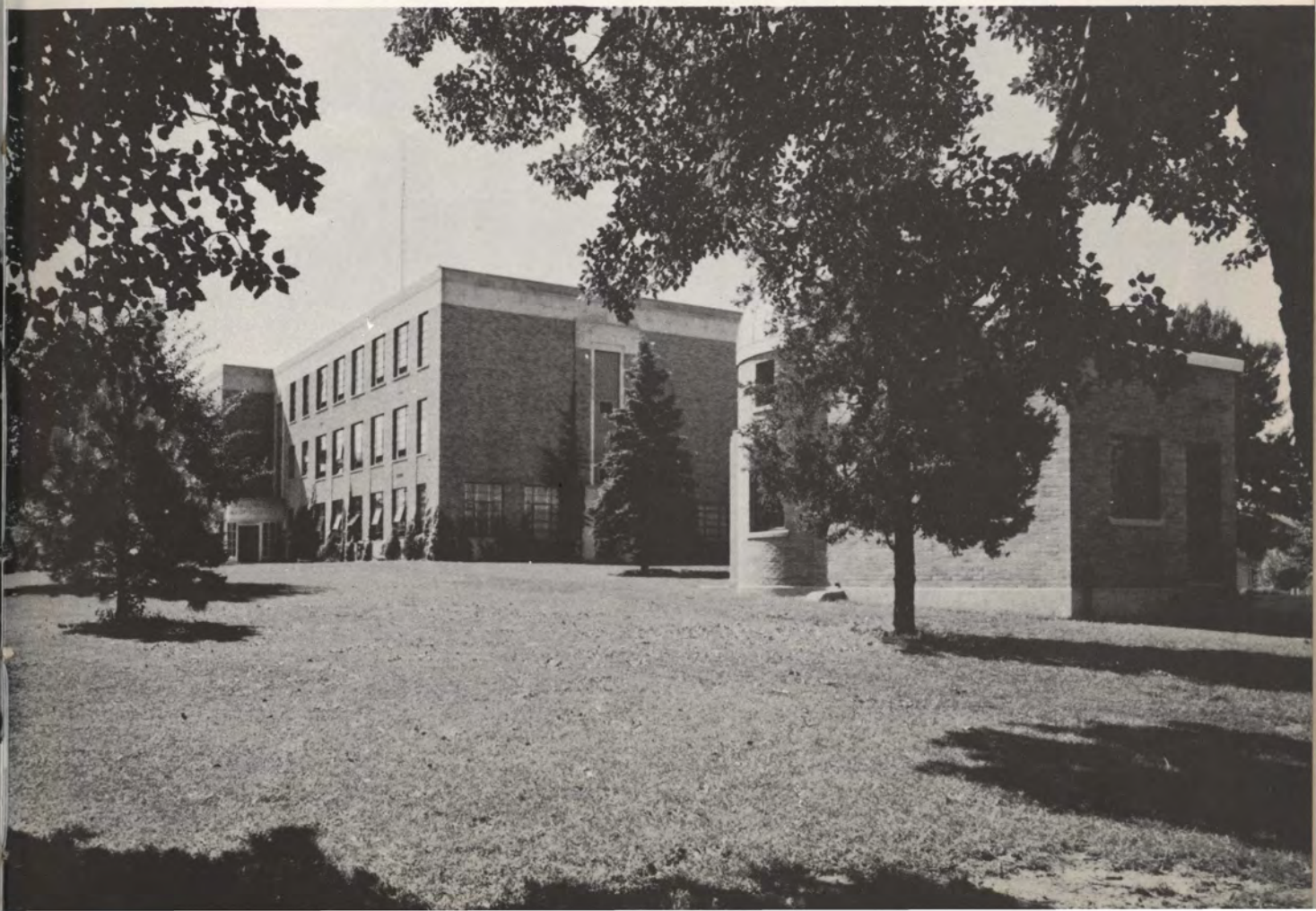
Alumni  
Gymnasium

## Campus Views

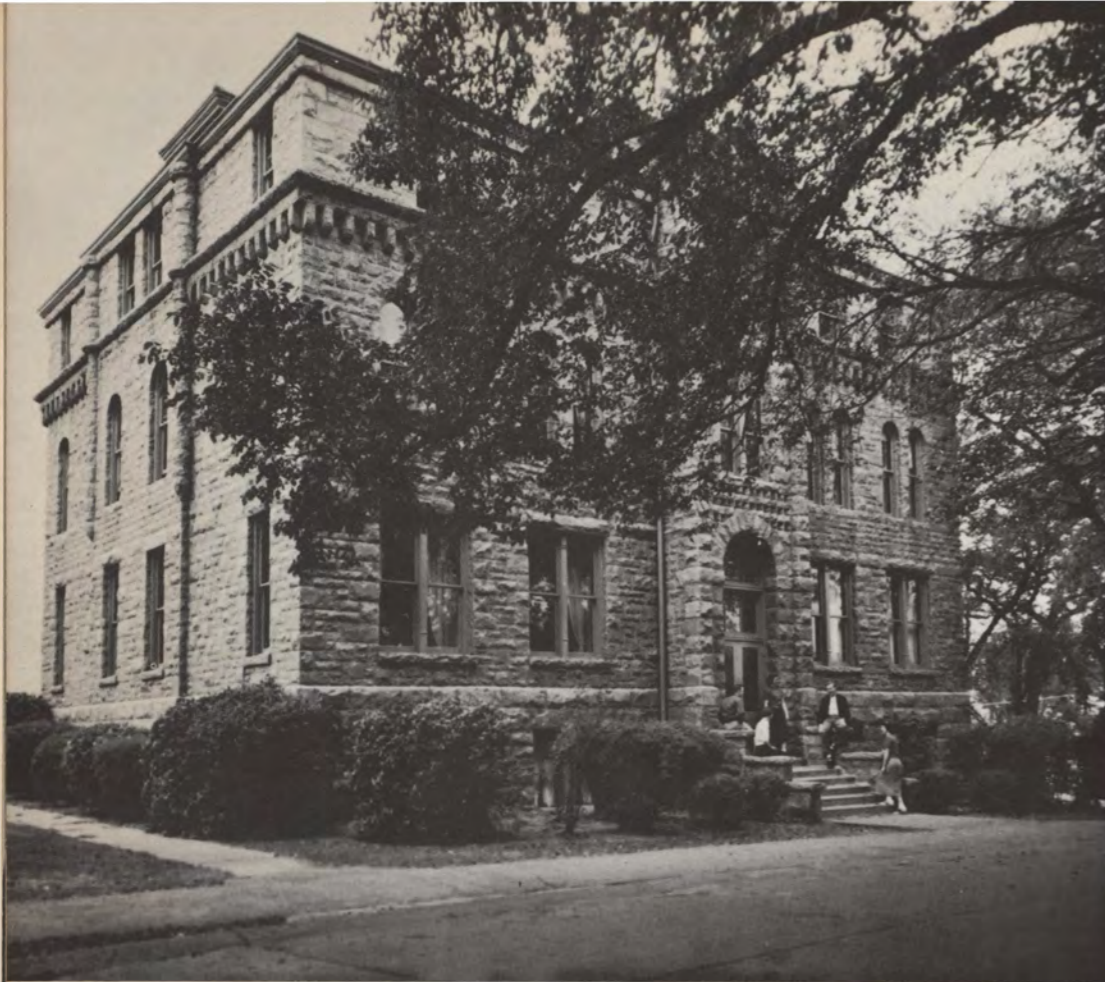
A. W. Jones Hall of Science — J. H. O'Donoghue Observatory



George M. Allee Gymnasium







Conservatory



Lillian Dimmitt Hall for Women



Main Hall

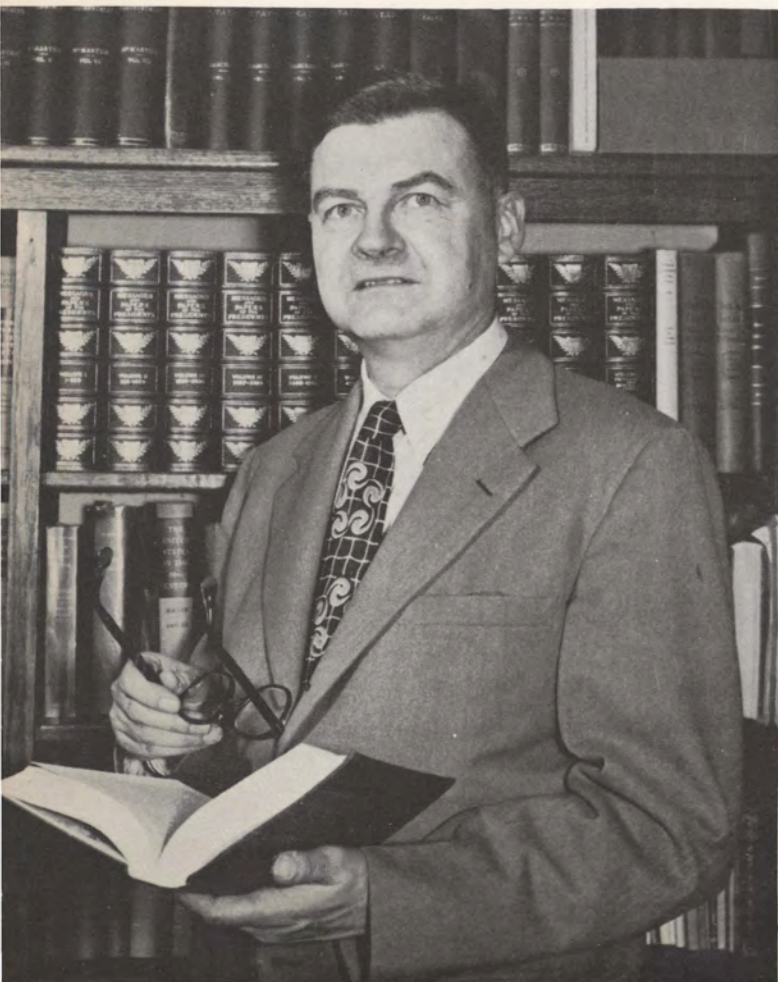


Student Union and Men's Dormitory





President Earl A. Roadman



Dean  
Thomas  
Tweito

A  
d  
m  
i  
n  
i  
s  
t  
r  
a  
t  
i  
o  
n



Dean of Men  
Miles Tommeraasen



Dean of Women  
Alva Tolf



Health  
Office

Dr. Berkstresser  
Mrs. Simonsen



**LYLE LEIDER**  
Vice President



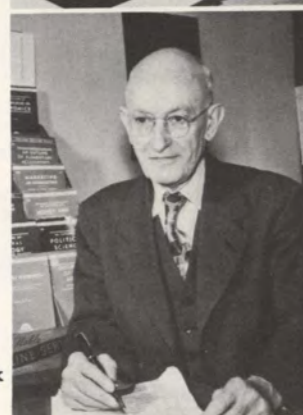
**MR. OLSEN**  
Business Manager

**MR. LILJEGREN**  
Director of Admissions



**MRS. MAHOOD**  
Alumni Secretary

**MR. WALKER**  
Manager of College Book Store



**MRS. DAY**  
House Mother,  
Dimmitt Hall

**MRS. PAULK**  
House Mother,  
Men's Dorm



**MR. ASHBY**  
Professor of  
Livestock Marketing  
University of Nebraska  
Nebraska Wesleyan  
University  
University of Minnesota  
University of Illinois

**MR. ASPREY**  
Associate Football Coach  
Morningside College  
Colorado University  
Denion University, Ohio



**MR. BAUER**  
Professor of Sociology  
Iowa Wesleyan College  
Northwestern University  
Drake University  
University of Iowa

**MR. BOWMAN**  
Associate Professor of  
History  
Augustana College  
University of Nebraska  
University of Iowa  
University of Omaha



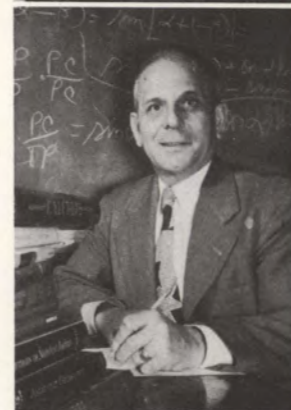
**MISS BOWNE**  
Director of Women's  
Physical Education  
Coe College  
University of Wisconsin  
University of Iowa

**MR. BUCKINGHAM**  
Director of Athletics  
Morningside College  
Stanford University



**MR. BURRIS**  
Librarian  
Instructor of  
Library Science  
Otterbein College  
Bonebrake Theological  
Seminary  
University of Chicago

**MR. BUSHYAGER**  
Professor of Mathematics  
Allegheny College  
Pennsylvania State College  
University of Michigan



**MRS CARLSON**  
Head of Department  
of Home Economics  
Kansas State College  
Wichita University  
Kansas State Teachers'  
College  
Colorado University

**MR. CASTLE**  
Professor of English  
University of Illinois  
Northwestern University  
University of Michigan



**MISS DIMMIT**  
Dean of Women Emeritus  
Professor of Ancient  
Languages  
Illinois Wesleyan  
University  
Columbia University  
University of Chicago  
American School of  
Classical Studies, Rome  
Morningside College

**MR. DROULLARD**  
Head Football Coach  
Assistant Professor of  
Mathematics  
Dubuque University  
University of Wisconsin



**MR. EIDSMOE**  
Head of Department  
of Education  
Yankton College  
University of  
South Dakota  
University of Minnesota  
University of Chicago



**MR. GRABER**  
 Professor of Physics  
 Dean of Men Emeritus  
 Heidelberg College  
 University of Iowa  
 University of Michigan  
 Columbia University  
 Ohio State University  
 University of Chicago  
 State University of Iowa



**MR. GREEN**  
 Instructor in Physics  
 Morningside College  
 State University of Iowa



**MR. HAWTHORN**  
 Professor of Sociology  
 Iowa State College,  
 University of Wisconsin



**MR. KUCINSKI**  
 Head of  
 Violin and Orchestra  
 Morningside College  
 Cleveland Institute of  
 Music  
 Julliard Graduate School  
 of Music



**MR. LOWRY**  
 Instructor in  
 Wood-wind Instruments  
 Morningside College  
 University of South Dakota



**MISS GRAMMER**  
 Assistant Professor and  
 Head of Music Department  
 University of Nebraska  
 University of Colorado  
 Northwestern University



**MR. GWINN**  
 Registrar  
 Assistant Professor of  
 Physics  
 Morningside College  
 State University of Iowa  
 University of Minnesota



**MR. HILE**  
 Professor of Speech  
 University of Denver  
 University of Southern California  
 Th.M. Iliff School of Theology,  
 Denver  
 University of Washington



**MISS KUHN**  
 Professor of Romance  
 Languages  
 Eastern Illinois Teachers'  
 College  
 University of Laval,  
 Quebec  
 University of Paris,  
 France



**MRS. MacCOLLIN**  
 Instructor of Voice  
 Oberlin Conservatory  
 of Music  
 Morningside College



**MR. MacCOLLIN**  
 Director of the  
 Conservatory of Music  
 Professor of Voice  
 Oberlin Conservatory  
 of Music  
 Chautauqua Summer School  
 of Music  
 Morningside College  
 George Peabody College  
 for Teachers



**MRS. MORRISON**  
 Modern Dance Instructor  
 Chicago Art Institute  
 University of  
 North Carolina  
 Northwestern University



**MISS MURRAY**  
 Professor of History  
 Morningside College  
 University of Illinois  
 Columbia University  
 Washington University



**MRS. PYLE**  
 Foreign Studies  
 Assistant Professor in  
 Secretarial Science  
 Morningside College  
 Foreign Studies



**MR. SAMMONS**  
 English Instructor  
 Amhurst  
 University of Iowa



**MISS McNEE**  
 Associate Professor of  
 Elementary Education  
 Upper Iowa University  
 University of Chicago  
 University of Iowa  
 University of Minnesota



**MR. MORRISON**  
 Associate Professor  
 of Musical Theory  
 Michigan State College  
 Eastman School of Music  
 University of Pittsburgh  
 The George Washington  
 University  
 University of Indiana



**MR. NYDEGGER**  
 Professor of Biology  
 Iowa State College  
 University of Nebraska  
 State University of Iowa  
 University of  
 Southern California



**MR. RUSH**  
 Professor of Art  
 Morningside College  
 Director of Sioux City  
 Art Center



**MISS SMITH**  
 Associate Professor of English  
 Florida State College  
 Emory University  
 George Peabody College  
 for Teachers  
 Iowa State College





MR. SPORNITZ  
Instructor of  
Economic Theory  
University of North Dakota



MR. STIENTJIES  
Associate Professor  
of Chemistry  
Iowa State Teachers  
College  
South Dakota University  
University of Minnesota

MR. SWINGLE  
Assistant Professor in  
Piano forte  
Conservatory of Music,  
Cincinnati  
Foreign Studies

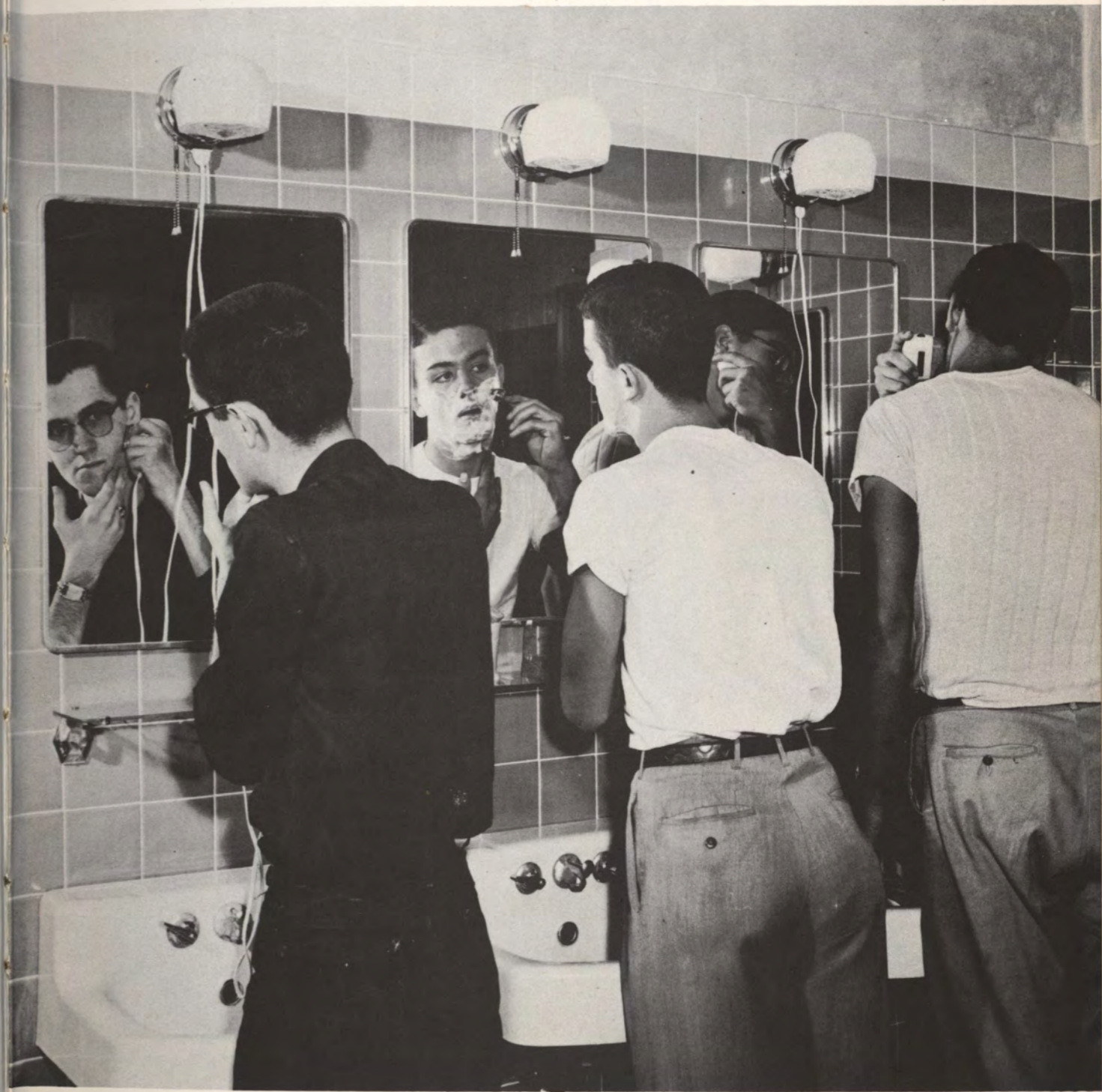


MR. WALSH  
Associate Professor  
of Philosophy  
Boston University  
Harvard University  
University of London

MR. WIEDMAN  
Assistant Professor  
of Biology  
University of  
Connecticut  
Foreign Studies



# Students





Manou Chehr Atash  
Iran

Violet E. Baker  
Sioux City, Iowa

Jacqueline Jo Barcal  
Sioux City, Iowa

Arthur J. Barrett  
Sioux City, Iowa

Robert Edgar Baxter  
Sioux City, Iowa

F. Bob Beck  
Sioux City, Iowa

Robert Edward Bennett  
Sioux City, Iowa

Delbert LeRoy Brewer  
Hartington, Nebr.

Douglas E. Burr  
Sioux City, Iowa

Charles Edward Carter  
Sioux City, Iowa

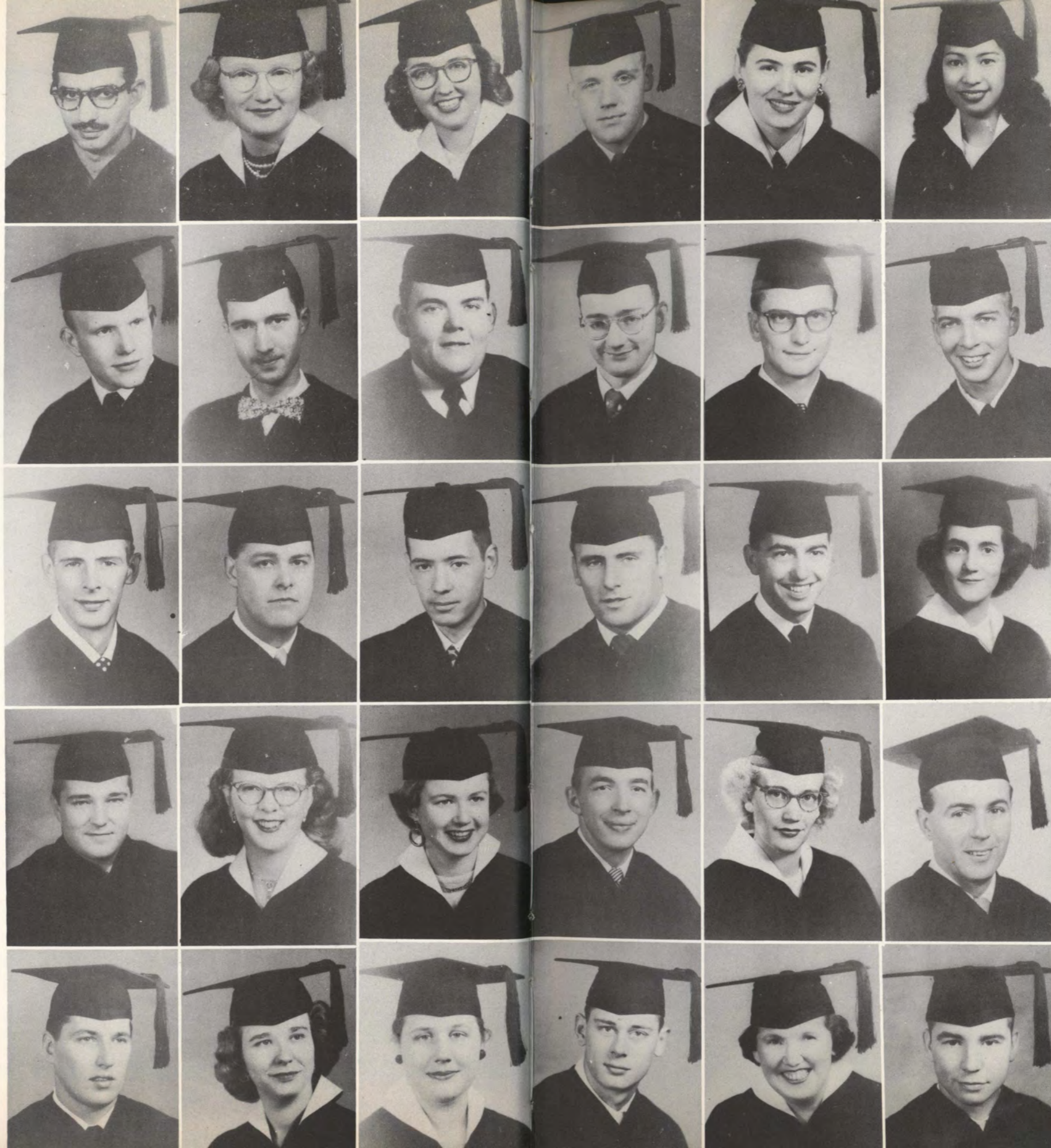
Marilyn D. Clark  
Hornick, Iowa

Evelyn Ruth Decker  
Sioux City, Iowa

Ronald Richard Doherty  
St. Clair Shores, Michigan

Gertrude Harriet Draayom  
Sioux City, Iowa

Jacqueline Ada Ecker  
Sioux City, Iowa



Gene Evers  
Schleswig, Iowa

Joyce Lee Ford  
Spirit Lake, Iowa

Dolores E. Gabriel  
Hawaii

James William Galli  
Sioux City, Iowa

Albert Ray Garnmeister  
George, Iowa

David E. Gell  
Sioux City, Iowa

Richard H. Girvin  
Albany, N. Y.

Stanley Lloyd Greigg  
Sioux City, Iowa

Patricia Ann Grube  
Sioux City, Iowa

Clifford Duane Hansen  
LuVerne, Iowa

Marjorie Claire Hobbs  
Sioux City, Iowa

Paul Franklin Hummel  
Sioux City, Iowa

Robert Dean Hussey  
Albert City, Iowa

Elizabeth Mary Jensen  
Sioux City, Iowa

Keith William Johnson  
Sioux City, Iowa



S  
E  
N  
I  
O  
R  
S

Wallace Edwin Johnston  
Iowa Falls, Iowa

Franklin Wm. Kinney  
Sioux City, Iowa

Donald Dean Kivlighn  
Sioux City, Iowa

Marilyn Goodwin Knudsen  
Sioux City, Iowa

Olga Kott  
Sioux City, Iowa

Wallace Krone  
Sioux City, Iowa

Judith Karolina Larsen  
Sioux City, Iowa

George Earl Layton  
Sioux City, Iowa

Mark Clair Link  
Sibley, Iowa

Milton Thomas Madden  
Pierson, Iowa

Allen Paul McDonough  
Sioux City, Iowa

Sherman Wm. McKinley  
South Sioux City, Nebr.

Robert ODonnell  
Sioux City, Iowa

Paul Edward Otte  
Mapleton, Iowa

Joseph Robert Pagen  
Detroit, Michigan



Gayle Harrison Patton  
Sioux City, Iowa

Miles Herschel Patton  
Sioux City, Iowa

Connie Pecaut  
Sioux City, Iowa

Melvin Arthur Pederson  
Sioux City, Iowa

Marilyn Joan Peterson  
Elk Point, South Dakota

Walt Baird Phelps  
Cedar Rapids, Iowa

Willard LaMar Pickford  
Ft. Lauderdale, Florida

Helen Gertrude Price  
Sioux City, Iowa

Alma Ruth Rexwinkel  
Orange City, Iowa

James P. Rose  
Sioux City, Iowa

Richard Ruggles  
Chicago, Illinois

Charles Allen Rush  
Sioux City, Iowa

John H. Smith  
Sioux City, Iowa

James Carl Springer  
Sioux City, Iowa

Benjamin Storek  
Czechoslovakia

S  
E  
N  
I  
O  
R  
S



S  
E  
N  
I  
O  
R  
S

Robert E. Sullivan  
South Sioux City, Nebraska

Alice Yukiko Suzuki  
Hawaii

Barbara Evelyn Thompson  
Sioux City, Iowa

Howard E. Thompson  
Sioux City, Iowa

Duane Ralph Tritle  
Spirit Lake, Iowa

Joan Albrecht Usher  
Pomeroy, Iowa

Kenneth Van Der Sloom  
Meriden, Iowa

Edwin Joseph Vorisek  
Sioux City, Iowa

Walter Carl Wagner  
Sioux City, Iowa

Dana Harold Wall  
Sioux City, Iowa

Howard Raymond Weiner  
Sioux City, Iowa

Margaret Mae Wood  
Woodbine, Iowa

Ruth Louise Woods  
Sloan, Iowa

Merne Carlton Zacharias  
Persia, Iowa

Walter Leon Burton  
Sioux City, Iowa



J  
U  
N  
I  
O  
R  
S

Patricia Burtness  
Onawa, Iowa

Constance Rae Cleveland  
Sioux City, Iowa

Betty Lou Erickson  
Sioux City, Iowa

Clark Gassman  
Akron, Iowa

Roger Edward Gohring  
Onawa, Iowa

Ruth Grindberg  
Primghar, Iowa

Monte Dean Gruett  
Sioux City, Iowa

Robert Leon Hildreth  
Rockwell City, Iowa

Kermit LeRoy Isaacson  
Sioux City, Iowa

Douglas Edward Jones  
Sioux City, Iowa

Nancy Carolyn Lehan  
Sioux City, Iowa

Curtiss Griffin Lovelace  
Sioux City, Iowa

Dwaine F. Miller  
Sioux City, Iowa

Robert Bruce Miller  
Sioux City, Iowa

Don Gordon Murray  
Sioux City, Iowa



JUNIORS

Duane Edward Oleson  
Sioux City, Iowa

Donald William Palmer  
Sioux City, Iowa

Eugene Harold Persinger  
Onawa, Iowa

Joanne Augusta Preul  
Spencer, Iowa

Thomas Wayne Rose  
Sioux City, Iowa

Constance Phyllis Sarris  
Sioux City, Iowa

Faye Shulkin  
Sioux City, Iowa

Jerrold Gordon Thacker  
South Sioux City, Nebraska

Doris Junesse Thompson  
Woodbine, Iowa

Larry James Toner  
Sioux City, Iowa

Jon Harrison Vorisek  
Sioux City, Iowa

Marlys Watson  
Archer, Iowa

Amy Ruth Williams  
Denver, Colorado

Paul Kenneth Zeising  
Sioux City, Iowa

James Zyzda  
Des Moines, Iowa



SOPHOMORES

Jean Adele Arndt  
Blencoe, Iowa

Bonnie Jean Ahart  
Dow City, Iowa

Paul Edward Bern  
Sioux City, Iowa

Denver Dick Birkhofer  
Schaller, Iowa

Phyllis Marie Blair  
Dayton, Iowa

Barbara Jane Brown  
Lawton, Iowa

Joan Esther Carlson  
Sioux City, Iowa

Tony Castellanos  
Mercedes, Texas

Ardath Francille Chamberlain  
Sioux City, Iowa

Beverly Jean Coates  
Sioux City, Iowa

Diana Raye Cottington  
Stratford, Iowa

Donald S. Croston  
Sioux City, Iowa

Alice Mae Denker  
Denison, Iowa

Paul Jerome De Vries  
Buffalo Center, Iowa

Gordon Leroy Dodge  
Hartley, Iowa



Gilbert Louis Ducommun  
Cleghorn, Iowa

William Charles Dunn  
Sioux City, Iowa

Barbara Joy Edwards  
Sioux City, Iowa

Donald Dick Eilers  
Sioux City, Iowa

Marlene Joyce Fairley  
Sioux City, Iowa

Hazel Leona Forsberg  
Odebolt, Iowa

Kathryn Faye Fristad  
LeMars, Iowa

Martha Ann Gerstandt  
Paullina, Iowa

Douglas Gene Gibbs  
Honolulu

Larry Lewis Griewe  
Sac City, Iowa

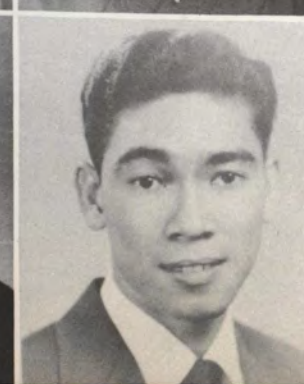
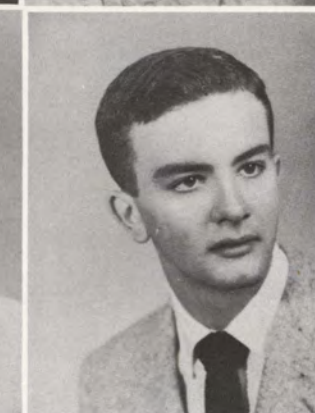
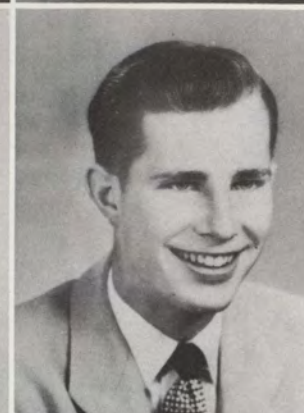
Macel Joyce Hagedorn  
Linn Grove, Iowa

Rhena Marie Hansell  
Sioux City, Iowa

John Paul Hantla  
Sioux City, Iowa

Arlin Marie Harms  
Sheldon, Iowa

Robert Lee Harris  
Sioux City, Iowa



Carolyn Ann Heise  
Jewell, Iowa

Georgia Kay Hix  
Odebolt, Iowa

Mary Ann Hoffman  
Akron, Iowa

Marlys Mae Idso  
Archer, Iowa

June Ann Jackson  
Charles City, Iowa

Beverly June Johnson  
Rockwell City, Iowa

Evelyn Mae Johnson  
Paullina, Iowa

Shelby Corzine Johnstone  
Sioux City, Iowa

Leo Deane Juffer  
Ireton, Iowa

Donna Mae Kargas  
Garner, Iowa

Wassileh Paul Khoury  
Jerusalem

Nancy Carlene Kirk  
Dunlap, Iowa

Adele Ann Kirkpatrick  
Sioux City, Iowa

Cesar Lay  
Dolton, Illinois

Margaret Ellen Lohr  
Lohrville, Iowa



SOPHOMORES

Jack Wayne Lombard  
Sioux City, Iowa

Mabel Helen Long  
Akron, Iowa

Arlene Helen Moltsau  
Onawa, Iowa

Doris Aileen Ney  
Granville, Iowa

Paul Eugene Noble  
Sioux City, Iowa

Margaret Joan O'Keefe  
Sioux City, Iowa

Albert Onweazu Okonkwo  
Nigeria

Patricia Lee Parsons  
Sioux City, Iowa

Emogene Arlice Paulson  
Garner, Iowa

Margie Ann Pecaut  
Sioux City, Iowa

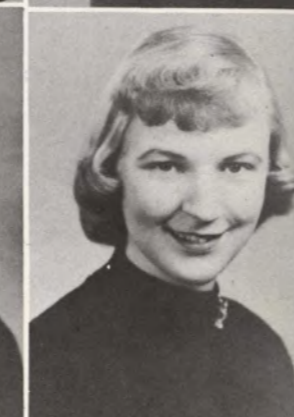
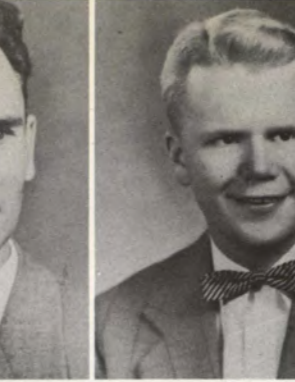
Douglas Jack Pommrehn  
Williams, Iowa

Loring Bainbridge Quimby  
Brookline, New Hampshire

Eugene August Rehder  
Paullina, Iowa

Ralph Schroeder  
Sioux City, Iowa

Duane Cleo Seaton  
Soldier, Iowa



Elsie Marian Shultz  
Buffalo, Wyoming

Francis Wayne Stratton  
Sioux City, Iowa

Roger Kendall Swanson  
Brockton, Massachusetts

Mary Jane Tawney  
Sioux City, Iowa

Patricia Annette Thacker  
South Sioux City, Nebraska

James Theodore Umbarger  
Lake Park, Iowa

JoAnn Vander Feen  
Ireton, Iowa

Jim L. Welton  
Estherville, Iowa

Audrey Miller Whyte  
Burlington, Wisconsin

Robert Wilson  
Lawton, Iowa

Roger Harris Winter  
Buffalo Center, Iowa

Sally Marie Yockey  
Sioux City, Iowa

Lucy Yoshioka  
Hawaii

SOPHOMORES



Ramon Acena  
Guatemala

Ilene Joy Anderson  
Mondamin, Iowa

M. Jane Anderson  
Sioux City, Iowa

Rachel Ann Bailey  
Royal, Iowa

William Gene Barrett  
Schaller, Iowa

Marjorie K. Bauer  
Sioux City, Iowa

Bill Dean Beemer  
Lakota, Iowa

James Lee Beinke  
Waterloo, Iowa

Carl Russell Bennett  
Sioux City, Iowa

Carol Jean Blinco  
Sioux City, Iowa

James Edward Bobier  
South Sioux City, Nebr.

Rita Adell Brown  
Adaza, Iowa

Larry James Bryceson  
Fisgah, Iowa

Doyle Alfred Buss  
Sheldon North Dakota

Thomas Wilder Canfield  
Boone, Iowa



JoAnn Mae Challman  
Galva, Iowa

John Kurtis Christiansen  
Lohrville, Iowa

Willis Martin Cleveland  
Sioux City, Iowa

Vern Delphis Counter  
Sioux City, Iowa

Rodney H. Dais  
South Sioux City, Nebr.

Bill Donai DeJong  
Orange City, Iowa

Douglas Sackett Delzell  
Sioux City, Iowa

Douglas Ralph Dimick  
Sioux City, Iowa

Jean Mardell Ernst  
Albert City, Iowa

Gordon Starr Fairchild  
Sioux Rapids, Iowa

Ronald Axel Fredricksen  
South Sioux City, Nebr.

Fredric John Frey  
Sibley, Iowa

Mary Ann Galusha  
Sioux City, Iowa

Maurice Gene Getting  
Sanborn, Iowa

Beverly Ann Giehm  
Sioux City, Iowa



Louise K. Gleason  
Audubon, Iowa

Neal Everett Gohring  
Onawa, Iowa

Barbara Ellen Goodwin  
Sioux City, Iowa

Joan Doris Griesse  
Alvord, Iowa

Arlis Max Gripp  
Sioux City, Iowa

Dorothy Grace Guyett  
Woodbine, Iowa

Marilyn Erma Haddock  
Hornick, Iowa

Jack A. Hall  
Rockwell City, Iowa

Don Franklin Hickock  
Lohrville, Iowa

Ellen Marie Huster  
Sac City, Iowa

Richard Homer Jacoby  
Akron, Iowa

Jim G. Jeffrey  
Martinsburg, Nebraska

Gretchen Carol Jensen  
Sioux City, Iowa

Dixie Lou Johnson  
Sioux City, Iowa

Geraldine Cole Johnson  
Kansas City, Kansas



Norman Gene Johnson  
Sioux City, Iowa

Merilynn Ruth Jordan  
Flankinton, South Dakota

Keith Gordan Kading  
Sioux City, Iowa

Shirley Marie Kemner  
Sioux City, Iowa

Robert Kingsbury  
Ponca, Nebraska

Ronald Rexford Krause  
Dakota City, Nebraska

Dave Elvin Leonard  
Holstein, Iowa

Barbara Jean Lewis  
Sioux City, Iowa

Shirley Cornelia Lindgren  
Albert City, Iowa

William W. Lo  
Hong Kong

Judith Deane Lockard  
Sioux City, Iowa

Isa Joudeh Majaj  
Jordan

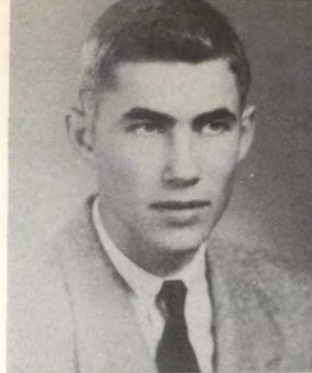
Rosemary Janise McElmuray  
Sioux City, Iowa

Richard Warren Metcalf  
Kingsley, Iowa

Sharon Elaine Metz  
Sutherland, Iowa



Larry Arnold Michael  
Westfield, Iowa



Lyle David Miller  
Spirit Lake, Iowa



Barbara Shirley Moeller  
Moneta, Iowa



Patricia Joan Morehead  
Akron, Iowa



Musa Saleem Nasir  
Jordan



Donna Mae Sanders  
Mapleton, Iowa

David Knapp Nelson  
Akron, Iowa



Marilyn Rose Schellinger  
Bronson, Iowa

Michael Joseph O'Keefe  
Sioux City, Iowa



Joan Beverly Schroeder  
Holstein, Iowa

Janice Barbara Olson  
Edna, Iowa



Larry Allen Schrader  
Sioux City, Iowa

Marilyn Jo Parsley  
Sloan, Iowa



Daryle LaMoyne Schuetts  
Hardwick, Minnesota

Kermit Charles Peters  
Remsen, Iowa



Loretta Esther Scoville  
Mitchell, South Dakota

Rosalie Ann Remmers  
Melvin, Iowa



Judith Faye Sellers  
Rowan, Iowa

Marvelyne Julianne Rise  
Sioux City, Iowa



Carrol Beverly Severson  
South Sioux City, Nebraska

Shalom Fred Ron  
Israel



Mabel S. Stanley  
Sloan, Iowa

Jerry Lee Starkweather  
Boyden, Iowa

Ronald John Strozdas  
Sioux City, Iowa

Robert Kent Tiemens  
Archer, Iowa

Sharon Elizabeth Toner  
Sioux City, Iowa

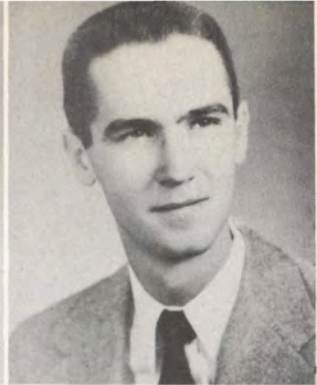
Cecil Clark Tuttle  
Sioux City, Iowa

Marcella Van Bostel  
Battle Creek, Iowa



F  
R  
E  
S  
H  
M  
E  
N

Frances Karleene Wade  
Paullirta, Iowa



Philip Gordon Walter  
Lohrville, Iowa



M. Beth Weisensee  
Sioux City, Iowa

Richard Allen Welding  
Sioux City, Iowa

Norma Jean Wherry  
Jefferson, Iowa

Wesley Williams  
Miller, South Dakota

Joanne Carolyn Wilson  
Sac City, Iowa



Walter Z. Zyzda  
Des Moines, Iowa





# Sports





# Football



## Varsity Squad

L. to R. first row: Blaine Garlow, Red Heuton, Marzine Oneal, Dave Van Vleet, Mickey Pickford, Larry Toner, Wally Krone, Daylon Wade, Walt Wagner. Second row: Dave Kahler, Al McDonough, Monty Mosier, Joe Pagen, Kermit Isaacson, Miles Patton, Bill Thomas, Don Croston, Buck Miller, Bill Hildebrand. Third row: Bob Miller, Paul Kirkegaard, Bob Creglow, Bill Holsclaw, Dutch Girvin.

## 1953 Football Schedule

Sept. 19 Wayne State.....	Here 21-7
Sept. 26 Omaha "U".....	There 19-27
Oct. 3 North Dakota State (Band Day).....	Here 20-14
Oct. 10 North Dakota "U".....	There 20-21
Oct. 16 Augustana.....	Here 19-0
Oct. 24 South Dakota "U".....	There 7-35
Oct. 31 Iowa State Teachers.....	There 20-34
Nov. 7 South Dakota State (Homecoming).....	Here 29-31



## Lettermen

Gene Evers—G	Paul Kirkegaard—C	Bob Motter—G	Howie Staber—H
Richard Girvin—T,	Al McDonough—H	Marzine Oneal—H	Bill Thomas—T
Verlin Heuton—H	Bob Meinhardt—H	Joe Pagen—T	Dave Van Vleet—H
Harry Holsclaw—E	Bob Miller—E	Mick Pickford—T	Walt Wagner—E
Kermit Isaacson—G	Duane Miller—QB	Darold Puff—F	





**W. Pickford**  
All Conference



**R. Girvin**  
Co-Captain  
Most. Val. Player

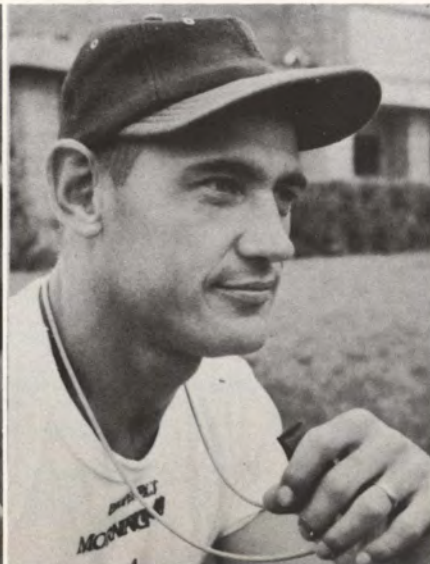


**W. Wagner**  
All Conference  
Co-Captain

**Clayton Drouillard**  
Head Football Coach

**Gene Asprey**  
Line Coach

**Bob Miller**  
Dick Clements Trophy  
Most Improved Player



The 1953 Football Squad opened the season with 16 lettermen from the 1952 team lost by graduation. Returning lettermen Roger Gohring, Jim Welton, and Howie Staber were forced to give up football due to illness. What the team lacked in bench strength, however, they made up for in spirit. Highlights of the season included a 20 to 7 opening game win over Wayne, a 20 to 14 victory over pre-season favorite, North Dakota State, and heartbreaking losses to North Dakota "U" and the always to be remembered 31 to 29 thriller with the "champion," South Dakota State.

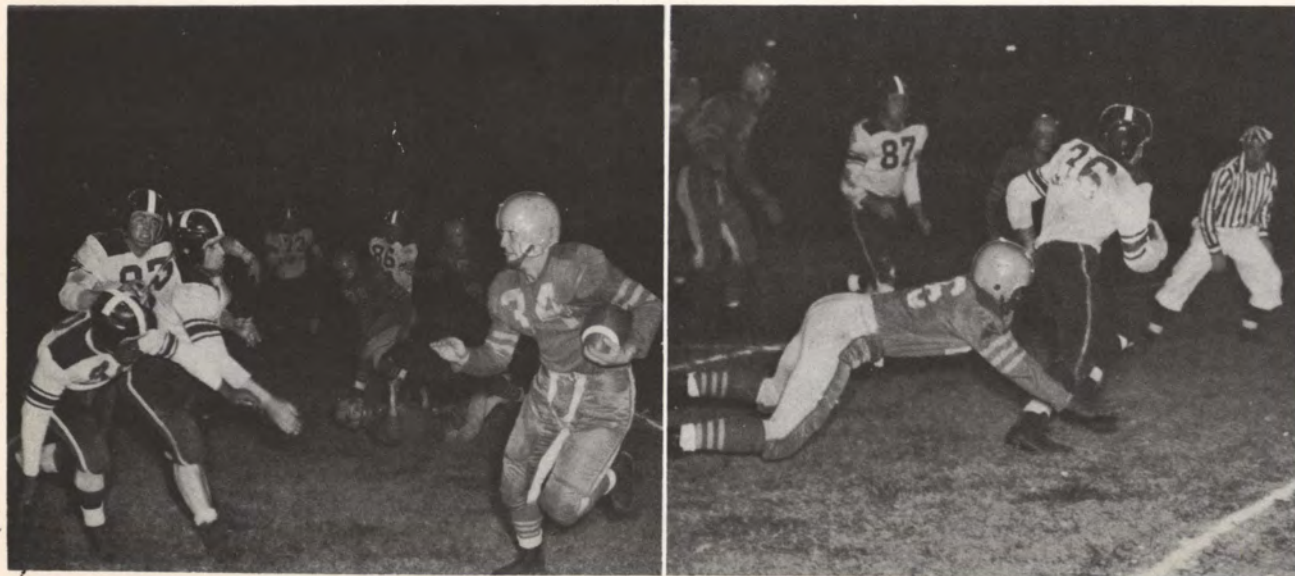






## Frosh Football Team

Top row l. to r., Coach Don Doherty, Daryl Schuett, Neal Gohring, Ron Fredrickson, Dick Kjos, Don Poppen, Ray Clark. Middle row, Maurice Getting, Dale Buckmiller, Jim Lammers, Dean Raymond, Bob Puff. Front row, Vern Counter, Jim Smith, Boyd Blakesly, Bill Beemer, Cliff Hinrichs.

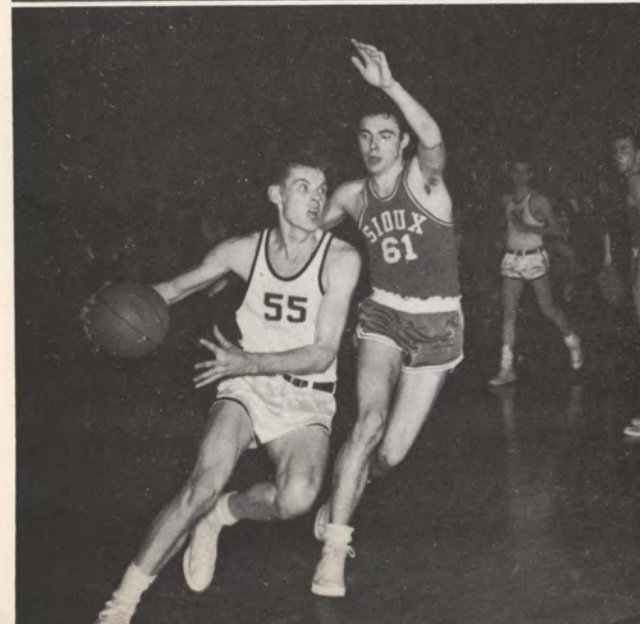
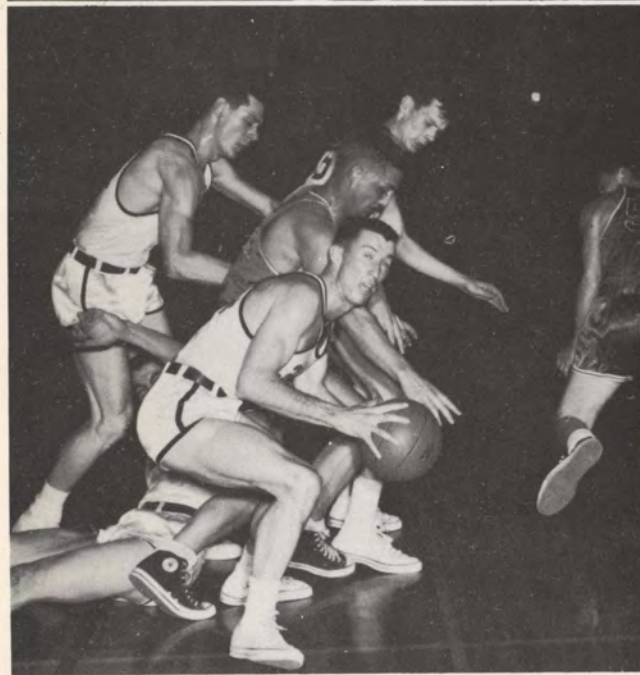


# Basketball



Brunsting Noble Barrett





This year a highly competitive intramural program was carried on by a large proportion of the male students. Close competition was featured in the battle for each of the different championships. In touch football the Alpha Tau Delta's and Crushers fought to three tie games with scores of 0-0, 6-6, and 0-0. Thus these two teams ended up tied for first place each with 4 wins, 0 losses, and 3 ties.

In basketball, the Phi Sig Ducks lost their first and last games, but put a 12 game winning streak together for the championship. The "M" Club served as the major threat as they wound up with an 11 and 3 record.

The broad intramural program includes basketball, football, volleyball, track, tennis, golf, and table tennis.



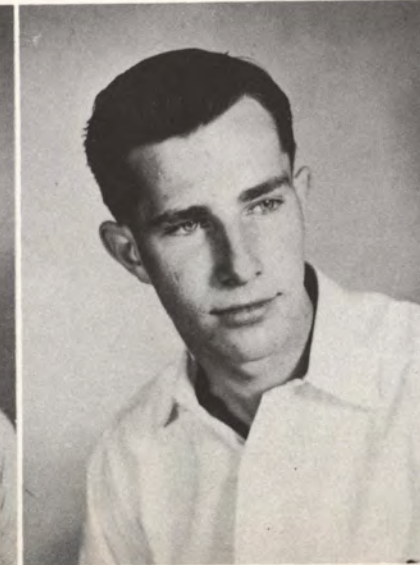
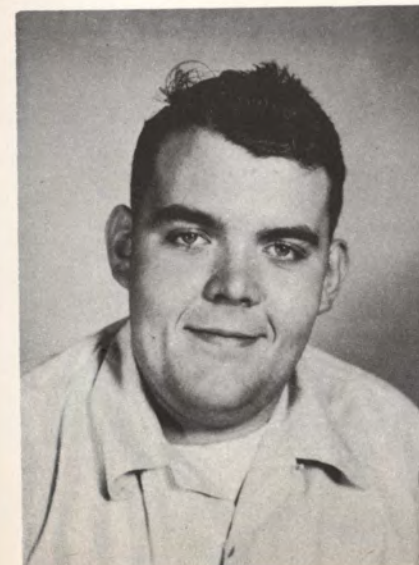
**Wally Krone**  
Intramural Director

## Intramurals

**Bob Beck, Coach**  
Phi Sig's Ducks

**Shelby Johnstone**  
Crusher's Coach

**Franklin Kinney**  
Alpha Tau Delta



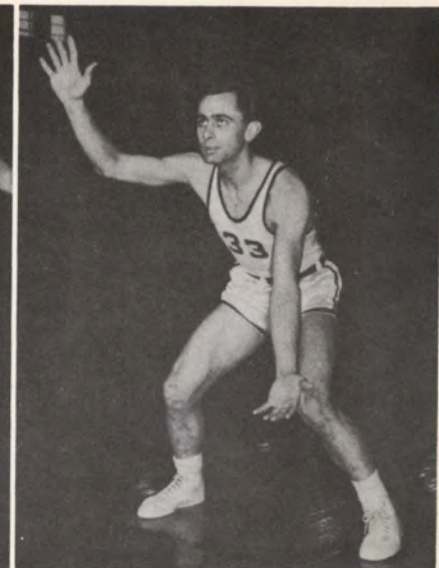




**Al Buckingham**  
Coach



**Bob Hussey**  
Most Valuable  
Co-Captain



**Dick Norman**  
Co-Captain

This year's Morningside Maroons gave an excellent account of themselves by finishing one game out of first place. They captured the offensive record of 77.5 points per game. The 110 points scored against Augustana College is high for a single game in the conference records and the team played spirited, aggressive basketball all the way through, giving them many wins against tough competition. It also afforded the fans good fundamental and spectacular basketball.



**First Row**

**Second Row**

**Back Row**

Coach A. W. Buckingham  
23 Bill Ide  
33 Dick Norman  
44 Buck Miller  
55 Virg Barrett  
51 Bob Hussey

45 Van Der Weide  
42 Ed Brunsting  
32 Wes Boldt  
35 Wilbert Long  
54 Al Brunsting

41 Bill Holsclaw  
31 Dave Vander Berg  
52 Chuck Heldridge  
53 Paul Noble  
43 Don Verdoorn

**Basketball Schedule**

Nov. 28 Westmar.....	79-61	Jan. 16 North Dakota State.....	80-73
Dec. 3 Cornell.....	57-70	Jan. 23 Iowa State Teachers.....	79-69
Dec. 7 Wayne State Teachers.....	98-103	Jan. 30 South Dakota State.....	83-80
Dec. 15 Westmar.....	92-73	Feb. 6 North Dakota "U".....	77-65
Dec. 17 Phillips "66".....	57-95	Feb. 10 South Dakota "U".....	62-64
Dec. 19 Dubuque.....	96-60	Feb. 13 Iowa State Teachers.....	66-58
Dec. 29 Indiana State.....	69-81	Feb. 18 Augustana.....	76-66
Jan. 4 Omaha "U".....	89-80	Feb. 22 South Dakota State.....	61-69
Jan. 9 North Dakota State.....	82-87	Feb. 27 Augustana.....	100-80
Jan. 11 North Dakota "U".....	59-87	Mar. 1 South Dakota "U".....	96-82



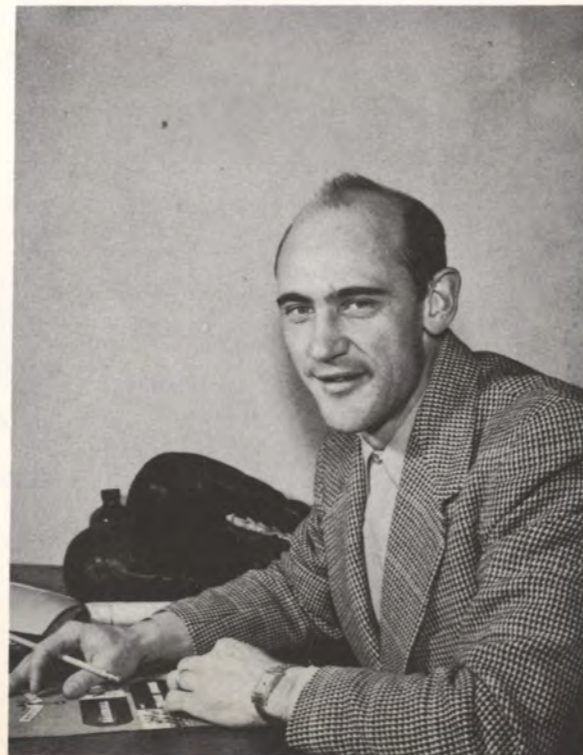


L. to R. back row: Gene Asprey, John Smith, Bill Holsclaw, Dale Buchmiller, Shelby Johnstone. Front row: Keith Kading, Wally Krone, Bob Hussey, Boyd Blakesley, Jim Hindman, Maurice Getting.

## Track

Once again the Morningside Maroons had to rely on the performances of a few outstanding individuals to maintain their record on the cinder track. However, what the team lacked in quantity, they made up for in quality. Mainstay for the Maroon thinclads were Wally Krone, Bob Hussey, Bill Holsclaw, Boots Phillips, and John Smith. Krone has gained national recognition in the javelin throw by placing second in the Drake Relays and Bob Hussey was outstanding as a sprinter in the 100 and 220 yard dashes. Bill Holsclaw and Boots Phillips picked up many valuable points in pole vault and John Smith, who won his letter last year, proved his merit on the relay teams.

**Gene Asprey**  
Track Coach



## 1954 Track Schedule

April 10.....South Dakota "U" Invitational  
 April 13.....Triangular at Wayne  
 April 16-17.....Kansas Relays  
 April 22.....Quadrangular at Wayne  
 April 23-24.....Drake Relays  
 April 30.....Sioux City Relays  
 May 22.....North Central Conference

## 1954 Baseball Schedule

April 9 Omaha "U".....Here  
 April 16 Iowa State Teachers.....Here  
 April 17 Iowa State Teachers.....Here  
 April 22 South Dakota State.....Here  
 May 1 South Dakota State.....There  
 May 4 Westmar.....Here  
 May 8 Westmar.....There  
 May 12 Buena Vista.....There  
 May 18 Omaha "U".....There  
 May 19 Buena Vista.....Here



**Les Brosamle**  
Baseball Coach

## Baseball Team

L. to R. front row: Coach Les Brosamle, Jim Welton, Wes Boldt, Burleigh Boldt, Bill Holsclaw, Gene Evers, Bob Hussey, Virgil Barrett, Dick Norman. Back row: Walt Wagner, Connie Hove, Bill Ide, John Wold, John Blatchford, Denver Birkhofer.





# Fraternities

# Sororities







A  
l  
p  
h  
a  
  
S  
i  
g  
m  
a

Violet Baker  
Georgia Hix  
Nancy Kirk  
Marilyn Peterson

Phylis Blair  
Marlys Idso  
Olga Kott  
Alice Suzuki

Marlene Fairley  
Beverly Johnson  
Margert Lohr  
Doris Thompson

Joyce Ford  
Evelyn Johnson  
Mabel Long  
Joan Van Der Feen

1st Semester

President.....Alice Suzuki  
Vice President.....Joyce Ford  
Recording Secretary.....Marilyn Majorowicz  
Corresponding Secretary.....Margaret Lohr  
Treasurer.....Doris Thompson

2nd Semester

President.....Joyce Ford  
Vice President.....Marilyn Majorowicz  
Recording Secretary.....Marlys Idso  
Corresponding Secretary.....Nancy Kirk  
Treasurer.....Doris Thompson



Gamma of the Year  
Tom Rose







A  
l  
p  
h  
a  
  
T  
a  
u  
  
D  
e  
l  
t  
a

William Beemer  
Maurice Getting  
Paul Hummel  
Buck Miller  
Larry Schrader  
Ken Van Der Sloot

Donald Croston  
Neal Gohring  
Keith Johnson  
Paul Noble  
Ralph Schroeder  
Dick Welding

Ken De Vries  
Roger Gohring  
Keith Kading  
Duane Oleson  
Jerry Starkweather  
Jim Welton

Gordon Dodge  
Monte Gruett  
Franklin Kinney  
Eugene Rehder  
Ronald Strozdas  
Roger Winter

Doug Gibbs  
Bob Harris  
Bob Miller  
Charles Rush  
Larry Toner

1st Semester  
 President..... Keith Johnson  
 Vice President..... Franklin Kinney  
 Recording Secretary..... Monte Gruett  
 Corresponding Secretary..... Dean Tudehope  
 Treasurer..... Roger Gohring

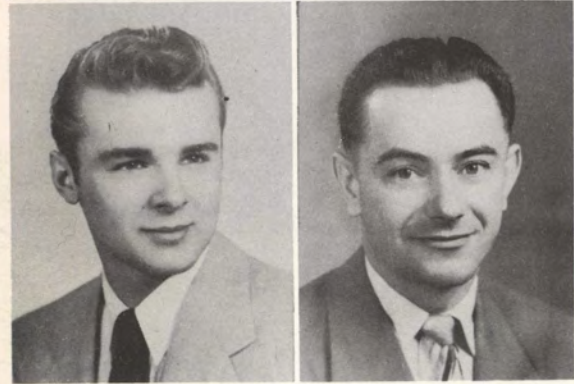
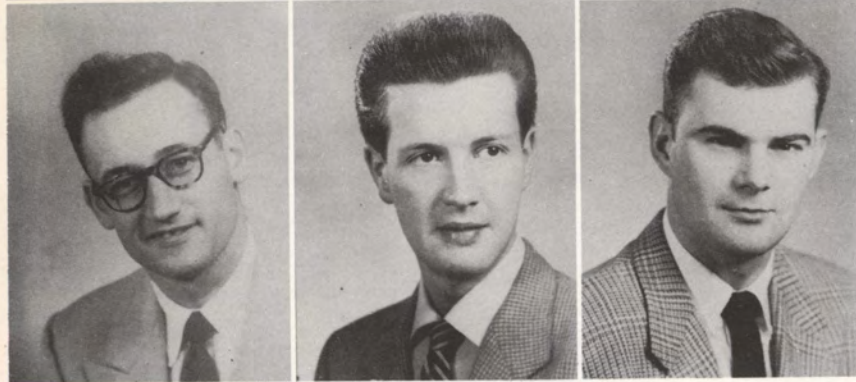
2nd Semester  
 President..... Charles Rush  
 Vice President..... Bob Harris  
 Recording Secretary..... Bill Beemer  
 Corresponding Secretary..... Paul Noble  
 Treasurer..... Roger Gohring



Alpha Tau Delta  
Sweetheart  
Connie Pecaut







**Gamma  
Iota  
Alpha**

Kermit Isaacson  
Doug Jones  
Curtiss Lovelace  
Med Pederson  
Thomas Rose  
Ben Storek  
Walt Zyzda  
Roger Burton

**Officers**

	1st Semester
President.....	Mel Pederson
Vice President.....	Tom Rose
Recording Secretary.....	Curt Lovelace
Corresponding Secretary.....	Doug Jones
Treasurer.....	Ben Storek

	2nd Semester
	Tom Rose
	Don Templeton
	Walt Burton
	Cliff Kennedy
	Ben Storek

**Gamma Sweetheart  
Georgia Hix**



**Queen of Hearts Dance**





# Kappa Pi Alpha



Bonnie Ahart	Jean Arndt	Barb Brown	Carol Blinco	Raye Cottington
Hazel Forsberg	Martha Gerstandt	Pat Grube	Ruth Grindberg	Macel Hagedorn
Carolyn Heise	Mary Ann Hoffman	Joanne Preul	Emogene Paulson	Connie Sarris
Elsie Shultz	Pat Thacker	Lucy Yoshioka	Marlys Watson	

## Officers

### 1st Semester

President.....Pat Grube  
 Vice President.....Ruth Grindberg  
 Recording Secretary.....Connie Sarris  
 Corresponding Secretary.....Marlys Watson  
 Treasurer.....Shirley Spielman

### 2nd Semester

President.....Pat Grube  
 Vice President.....Connie Sarris  
 Recording Secretary.....Hazel Forsberg  
 Corresponding Secretary.....Macel Hagedorn  
 Treasurer.....Carolyn Heise



Phi Sig of the Year  
 Wally Johnston







# K a p p a Z e t a C h i

Jackie Barcal	Joan Carlson	Ardath Chamberlain	Eve Decker
Gertrude Draayom	Barb Edwards	Adele Kirkpatrick	Marilyn Knudson
June Jackson	Donna Kargas	Betty Erickson	Nancy Lehan
Pat Parsons	Gayle Patton	Mary Jane Tawney	Amy Williams

## Officers

### 1st Semester

President.....Marilyn Goodwin  
 Vice President.....Gertrude Draayom  
 Recording Secretary.....Amy Williams  
 Corresponding Secretary.....Betty Erickson  
 Treasurer.....Evelyn Decker

### 2nd Semester

President.....Gertrude Draayom  
 Vice President.....Norma Peterson  
 Recording Secretary.....Jackie Barcal  
 Corresponding Secretary.....Nancy Lehan  
 Treasurer.....Evelyn Decker



ATD Knight

Chuck Rush





# Phi Sigma



Art Barrett	Bob Beck	Doug Burr	Chuck Carter	Tony Castellanos	Ron Fredrickson
Al Garnmeister	David Gell	Stan Griegg	Larry Grieve	Jack Hall	Clifford Hansen
John Hantla	Bob Hildreth	Wally Johnston	Shelby Johnstone	Wally Krone	Leo Juffer
Sherman McKinley	Allen McDonough	Dick Metcalf	Mike O'Keefe	Miles Patton	Gene Persinger
Jack Pommrehn	John Smith	Jim Springer	Bob Tiemens	Jim Umbarger	Herbert Williams
					Ken Zeising

# Officers

1st Semester  
 President.....Wally Johnston  
 Vice President.....Al McDonough  
 Recording Secretary.....Jim Springer  
 Corresponding Secretary.....Dave Gell  
 Treasurer.....John Smith

2nd Semester  
 President.....John Smith  
 Vice President.....Jim Springer  
 Recording Secretary.....Ken Zeising  
 Corresponding Secretary.....Wally Krone  
 Treasurer.....Larry Grieve



Phi Sig Sweetheart

Elsie Shultz





# Organizations







## W. S. G. A.

Women's self-governing association

Top: Joyce Ford, Arlin Harms, Joan Wilson, Marlys Watson, Jean Arndt. Bottom: Doris Thompson, Beverly Johnson, Barbara Brown, JoAnne Challman, Marlys Idso.

## Agora Board

Women's organization

L to R. top row: Sally Ebel, Joanne Preul, Miss Tolf, Joyce Ford, Ruth Grindberg. Second row: Hazel Forsberg, Gertrude Draayom, Gayle Patton, Marilyn Knudsen, Rachel Bailey.



## F. T. A.

Standing: Sharon Metz, Olga Kott, Stan Greigg, Joe Pagen, Dana Wall, Leroy Bras, Don Verdorn, Jim Springer, Arlin Harms, Hazel Forsberg, Ilene Anderson, Gertrude Draayom, Gayle Patton, Marlys Idso, Dorothy Guyett, Donna Sanders, Delores Gabriel, Madge Fagen. Seated: Bev Coates, Mratha Gerstandt, Kay Fristad, Bonnie Ahart, Arlene Moltsau, Violet Baker, Joyce Ford, Margaret Lohr, Marlene Fairley, Phylis Blair.

## Who's Who

Twelve outstanding seniors picked to represent Morningside College in Who's Who in American Universities and Colleges.

Art Barrett, Stan Greigg, Pat Grube, Verlin Heuton, Keith Johnson, Marilyn Knudsen, Milt Madden, Dick Norman, Gayle Patton, Miles Patton, Jim Springer, Joan Usher.







## Home Ec Club

Top: Violet Baker, Merilynn Jordan, Dolores Gabriel, Xenia Perez. Bottom: Jackie Barcal, Marilyn Knudsen, Ruth Grindberg.



## Ishkoodah

Top: Shirley Lindgren, Rita Brown, Beverly Lindberg, Janice Olson, Rosalie Remmers, Geraldine Johnson, Norma Wherry, Karlene Wade, Roberta Seel. 2nd: Loretta Scoville, Donna Sanders, Ellen Huster, Joan Wilson, Joan Schroeder, Rachel Bailey, JoAnne Challman, Marcella Van Boxtel, Gretchen Jensen, Louise Gleason, Judy Sellers. 3rd: Pat Morehead, Dorothy Guyett, Barbara Goodwin, Nancy Samuelson, Beverly Giehm, Jean Ernst, Barbara Moeller, Ilene Anderson, Merilynn Jordan. Bottom: Sharon Metz, Xenia Perez, Margie Shook, Joan Griesse, Marilyn Haddock.

## M. Club

Top row: Bill Ide, Marzine Oneal, Wes Boldt, Dick Norman, Bob Hussey, Buck Miller, Bob Motter, 2nd: Jim Welton, Verlin Heuton, Roger Gohring, Joseph Pagen, Wally Krone, Howie Staber. 3rd: Dave Van Vleet, Paul Kirkegaard, Kermit Isaacson, Milton Madden, Darold Puff, Bob Meinhardt, Willard Pickford. Bottom row: Bob Miller, Bill Thomas, Wilbur Long, Bill Holsclaw.



## W. A. A.

Women's Athletic Association

Top: Xenia Perez, Jean Ernst, Joan Schroeder, JoAnne Challman, Geraldine Johnson, June Jackson. Bottom: Margie Bauer, Barbara Goodwin, Margie Shook, Pat Morehead.





## Student Christian Association

Top row: Loring Quimby, Joan Schroeder, Bob Baxter, Duane Tritle, John Hantla, Paul Otte, Loren Anderson, Roger Swanson, Ruth Grindberg, Gordon Fairchild. Bottom: Mary Ann Hoffman, Rita Brown, Beverly Lindberg, Charlotte Krug, Xenia Perez.



## M. S. M.

Methodist  
Student  
Movement

Standing: Merilynn Jordan, Barbara Goodwin, Loring Quimby, Jack Hall, Gordon Fairchild, Mary Ann Hoffman, Rosalie Remmers. Seated: Margie Shook, Joanne Wilson, Charlotte Krug, Dorothy Guyett, Beverly Lindberg.



## Phi Mu Alpha

National music fraternity

First row: Leroy Bras, Bob Sullivan, Ken Van Der Sloom, Jerry Huldeen, Gene Persinger, Clark Gassman, Fred Zimmat. 2nd row: Duane Tritle, Allen Butcher, Milt Madden, Kermit Peters, Tom Canfield, John Kopecky. 3rd row: Jeff Fraser, John Groethe, Dick Jacoby, Rex Peer, Mr. Morrison. Bottom: Bob Wilson, Bill DeJong, Jack Lamb, Leo Juffer.



## Mu Phi Epsilon

National music sorority

Top: JoAnn Vander Feen, Alma Rexwinkel, Elsie Shultz. Bottom: Mabel Long, Georgia Hix, Jean Arndt.



Alpha  
Kappa  
Delta



Honorary Sociological fraternity

Standing: Dr. Hawthorn. Seated: Marilyn Knudsen, John Hantla, Mary Ann Hoffman.



Pi Kappa Delta

Honorary debating fraternity

Bob Baxter, Laine Kazos, Duane Tritle.

Top: Connie Cleveland, Alma Rexwinkel. Bottom: Duane Tritle, Ruth Grindberg, Bob Baxter.

Sigma  
Tau  
Delta

Honorary English fraternity



Intra-  
Fraternity



Top Row: Dave Gell, Chuck Heldridge, Earl Logan. Seated: Mel Pederson, Clifford Kennedy, Walt Zyzda, Ken Zeising.

Top: Joanne Preul, Connie Sarris, Joyce Ford, Jackie Barcal. Bottom: Pat Grube, Miss Kuhn, Miss Tolf, Doris Thompson.

Intra-  
Sorority







**Cosmopolitan Club** . . . international organization

Top: Loring Quimby, Rasmi Majaj, Isa Majaj, Manou Atash, Mrs. Burris, Mr. Burris. Middle: Musa Nasir, Don Kivlighn, William Lo, Albert Okonkwo, Fred Ron, Cesar Lay. Front: Merilynn Jordan, Geraldine Johnson, Xenia Perez, Wassileh Khoury.

Standing: Mary Ann Hoffman, Charlotte Krugg, Joan Schroeder, John Hantla, Loren Anderson, Roger Swanson, Gordon Fairchild, Rita Brown, Ruth Grindberg, Beverly Lindberg. Seated: Bob Baxter, Duane Tritle, Paul Otte, Loring Quimby.

**Kappa Chi** . . . religious and sociological majors



**Beta  
Beta  
Beta**



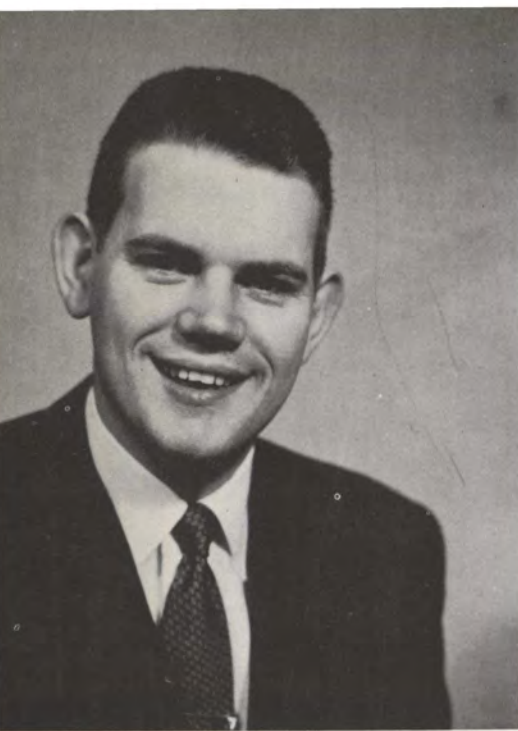
Top: Mr. Weidman, Bob Sullivan, Mark Link, Jean Ernst, Don Kivlighn, Manou Atash, Mr. Nydegger. Seated: Albert Okonkwo, George Calvo, Pat Grube, Frank Tepner, Xenia Perez.

Top: Mike Paradissanos, Emanuel Bakaki, Frances Stratton, Jack Lombard, Donald Eilers, Bob Motter. Front: Jerry Thacker, James Galli, Mr. Green, Mr. Guinn, Don Palmer.

**Physics  
Club**







**Miles Patton**  
President

Like all student councils of the past this year's council presided over the student-sponsored activities of the school and acted in the interests of the general student body. The 1953-54 council had an additional burden when it fell in charge of regulating the new student union. (The council is in charge of everything but the snack bar). This year's council also revived the weekly convocation programs that have not been held for several years. The convocation program, under Social Director John Smith, provided a variety of events, ranging from skits put on by the campus social fraternities and sororities to speeches by such outstanding people as the Governor of Iowa, William Beardsley, and the former first-lady, Eleanor Roosevelt.

## Student Council

- |                              |                              |                                 |                           |                                  |                                 |
|------------------------------|------------------------------|---------------------------------|---------------------------|----------------------------------|---------------------------------|
| Art Barrett<br>Advocate      | Barb Edwards<br>Publicity    | Dave Gell<br>Inter-frat. Rep.   | Stan Greigg<br>Vice Pres. | Ruth Grindberg<br>Secretary      | Pat Grube<br>Treasurer          |
| Tom Hackney<br>Freshmen Dir. | Verlin Heuton<br>Relig. Rep. | June Jackson<br>Member at Large | John Smith<br>Soc. Dir.   | Jim Springer<br>Pro. & Act. Dir. | Alice Suzuki<br>Inter-sor. Rep. |





# Arts







## Band

This year's band had dual highlights--first, when it played host to 36 marching bands and guest conductor Harold Walter, nationally known composer of marches, during the fall semester, and secondly, in the spring, when it gave its home concert and was host again to more than 30 bands and guest conductor Paul Yoder, nationally known composer and arranger.

The band members include Ardath Chamberlin, Judy Primmer, Bob Baxter, Carl Bennett, Tony Castellanos, Emogene Paulson, Kermit Peters, Jack Lamb, Georgia Hix, Beverly Johnson, Mable Johnson, Lou Reed, Donna Kargas, Merilynn Jordan, Joyce Ford, Bob Wilson, Alma

Rexwinkel, Tom Canfield, Janice Primmer, Marlys Watson, Marilyn Majorwicz, Jean Arndt, JoAnn Vander Feen, Marilyn Haddock, Jack Knox, Larry Michael, Ward Kowalke, Jon Vorisek, Allen Butcher, Gerald Huldeen, John Kopecky, Bill De Jong, Kathryn Schumann, John Christiansen, Frank Jettner, Raye Cottington, Clark Gassman, Frank Baker, Macel Hagedorn, Ken Van Der Sloot, Jeff Fraser, Jeanne Graham, Rex Peer, John Groethe, Fred Zimmat, Eugene Persinger, Elsie Shultz, Leo Juffer, Leroy Bras, Gilbert Ducommun, Roger Frank, Dick Jacoby, Bob Tiemens, Harold Hughes, Jerry Thacker, Stuart Buell, Bob Sullivan, Duane Tritle, Milton Madden, and Norma Peterson.

**Director**  
**Bob Lowry**

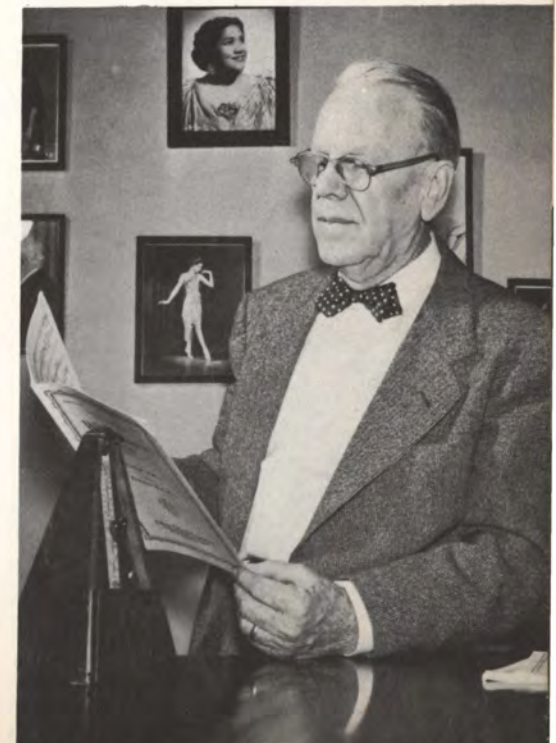


## Choir

The 1954 choir season was highlighted by a seven-day tour of Iowa under the direction of Mr. Paul MacCollin.

This year's choir members are: Jean Arndt, Beverly Giehm, Mary Ann Hoffman, Dona Kargas, Mabel Long, Barbara Moeller, Janice Olsen, Emogene Paulson, Joanne Preul, Janice Primmer, Alberta Seal, Judy Sellers, Carol Severson, Loretta Scoville, Elsie Shultz, Marcella Van Boxtel, Marlys Watson, Joanne Wilson, Connie Zorman, Raye Cottington, Louise Gleason, Marilyn Haddock, Georgia Hix, Beverly Linberg, Norma Peterson, Alma Rexwinkel, Pat Thacker, Nancy Sammelson, Jean Graham, Kathryn Schuman, JoAnn Vander Feen, Lucy Yoshioka, John Christianson, Bill DeJong, John Groethe, Jerry Huldeen, Leo Juffer, John Knox, Jack Lamb, Milt Madden, Jerry Thacker, Jon Vorisek, Bob Wilson, Leroy Bras, Allen Butcher, Tom Canfield, Gordon Dodge, Jeff Fraser, Clark Gassman, Dick Jacoby, John Kopecky, Larry Michaels, Kermit Peters, Iran Reed, Bob Tiemens, Ken Vandersloot, Fred Zimmat, Stuart Buell.

**Director**  
**Paul MacCollin**

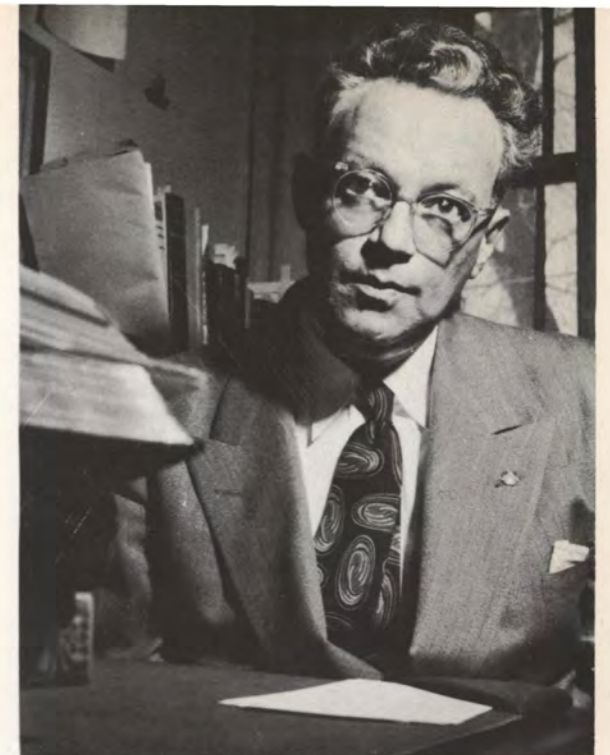






## Speech Arts

**Director  
Fredrick Hile**



In the area of the speech arts (oral interpretation-radio-T.V. and college theater) this year has proved a very successful one. The oral interpretation workshop has presented over 50 programs to clubs, church groups, fraternal and service organizations in and near Sioux City. These programs have involved the active participation of over 25 different students. The Radio-T.V. Workshop has presented 2 very successful television programs representing the college on the KVTV College Hour. The work of the group has been in the direct charge of Pierce Smith,

(KVTV announcer) and the second program featured an excellent original continuity by Terry J. Walker, entitled, "With These Eyes."

The College Theater presented two highly successful productions: Icebound, a Pulitzer prize dramatic comedy by Owen Davis (Wednesday and Thursday, Nov. 18-19, 1953). The production featured a remarkably fine and appropriately realistic setting designed by the director and executed by the technical director Roger Gohring and a staff of twenty students. The cast featured excellent performances by Beth Weisensee as Jane,

Johnny Powell as Ben, and James Galli as Henry together with fine support from a cast of nine others.

The second College Theater production, Shakespeare's Macbeth, was presented for three nights, Thursday, April 1; Friday, April 2; and Saturday, April 3. The splendid Klingler Forum stage was transformed by light, costumes and a three level stage with sky and set pieces into an arresting and beautiful picture of the progressive doom of evil (depicted in red) and the ascendancy of good (depicted in blue) of the play. The technical direction was again under Roger Gohring

and a crew of thirty—costumes supervised and made by Mary Jane Tawney and a committee of fifteen. Stan Greig was stage manager—assisted by Emanuel Bikakis and Eugene Wulf. The excellent publicity work (headed by Tom Rose) and the promotion of the Admissions Office (forty high schools were sent three hundred complimentary tickets) resulted in the largest audience and the biggest box-office in Morningside Theater history. The cast, headed by Duane Tritle as MacBeth and Arlys Harold's as Lady Macbeth trooped the play in near-professional style.







**Sioux Queen Jean Ernst**



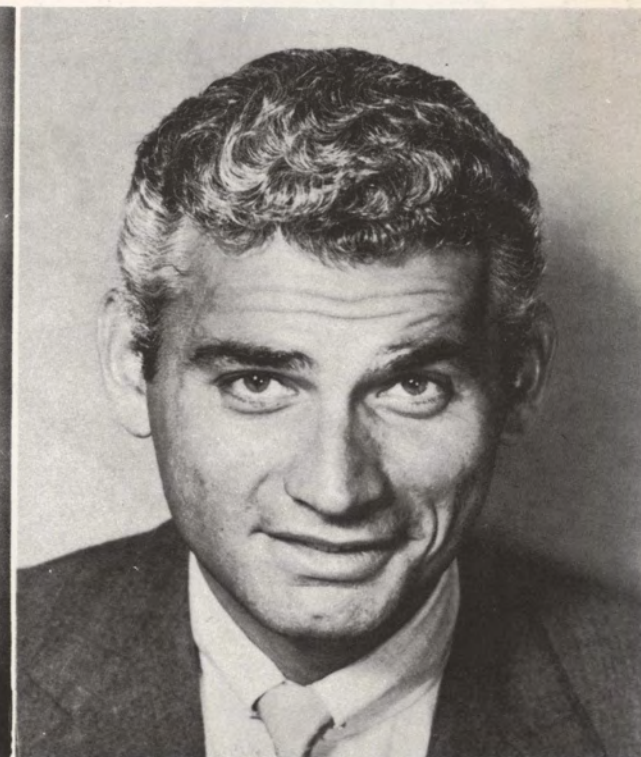
**Attendant  
Marcella Van Boxtel**



**Attendant  
Margie Bauer**



**Attendant  
Judy Lockard**



**Judge  
Jeff Chandler**







# Highlights







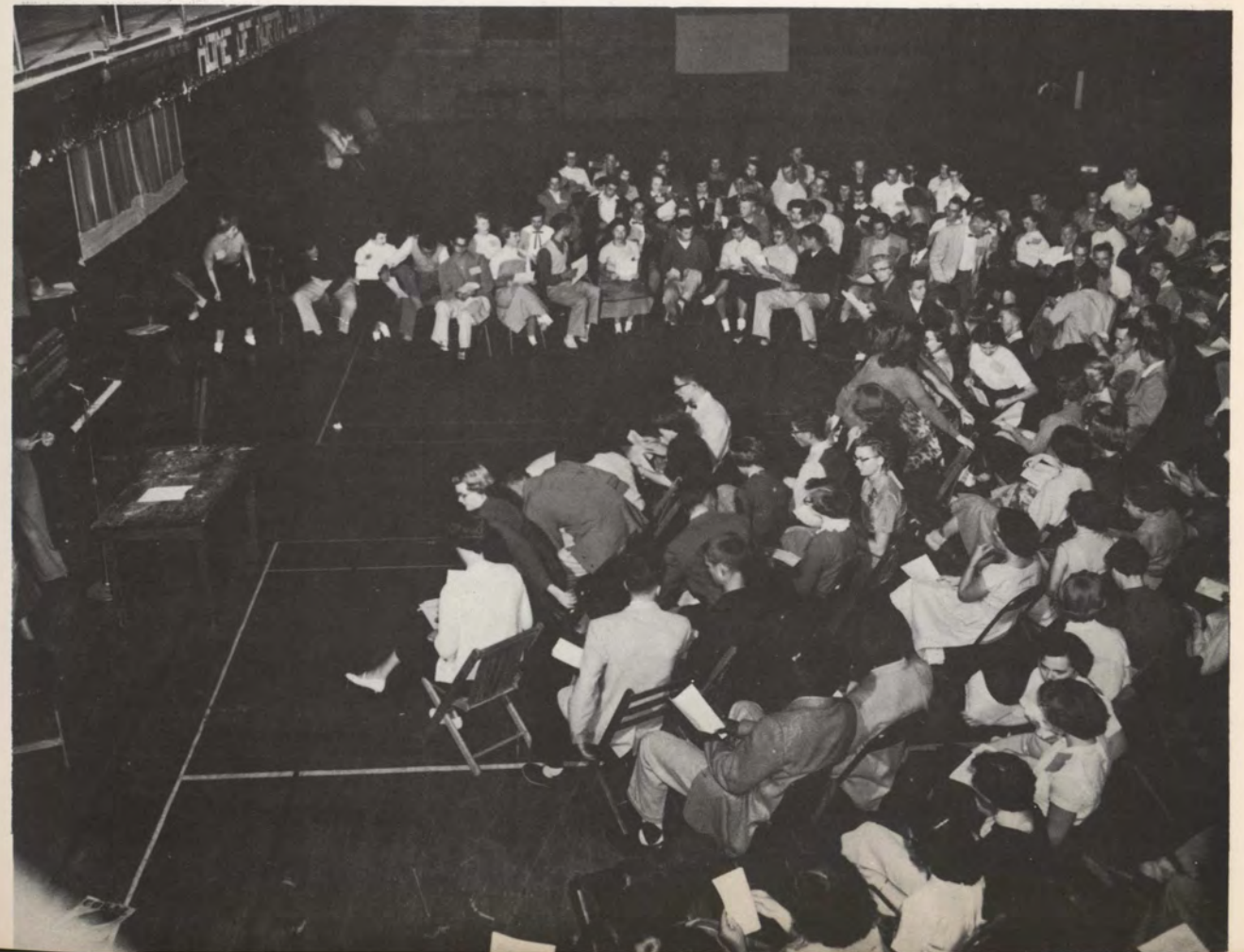
**Registration**



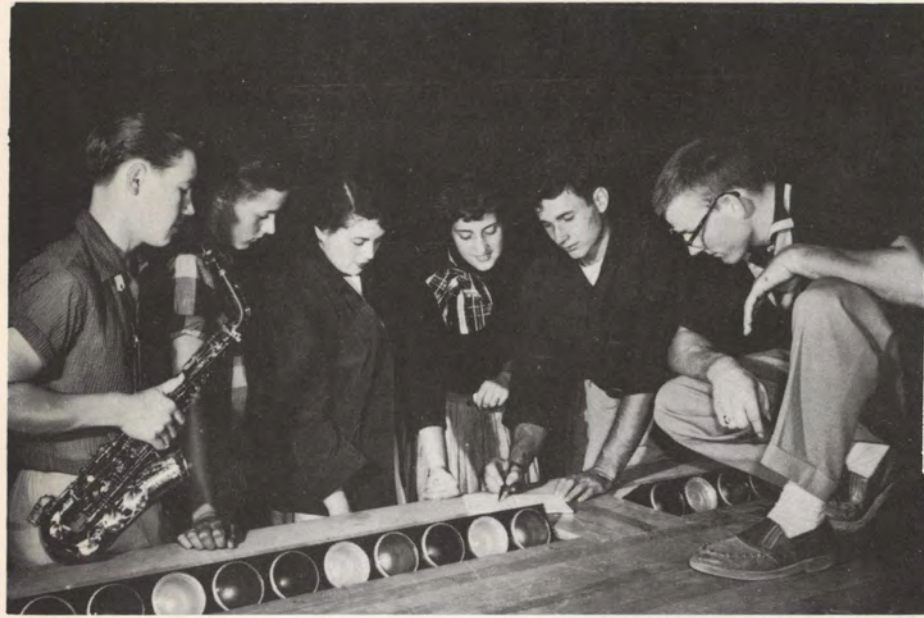
**Dean's  
Party**



**S. C. A.  
Mixer**







**Freshman  
Talent Show**



**Big-Little Sister Picnic**



**Big-Little Sister Tea**



**Phi Sigma**

**Barbeque Ball**







**Girl's**

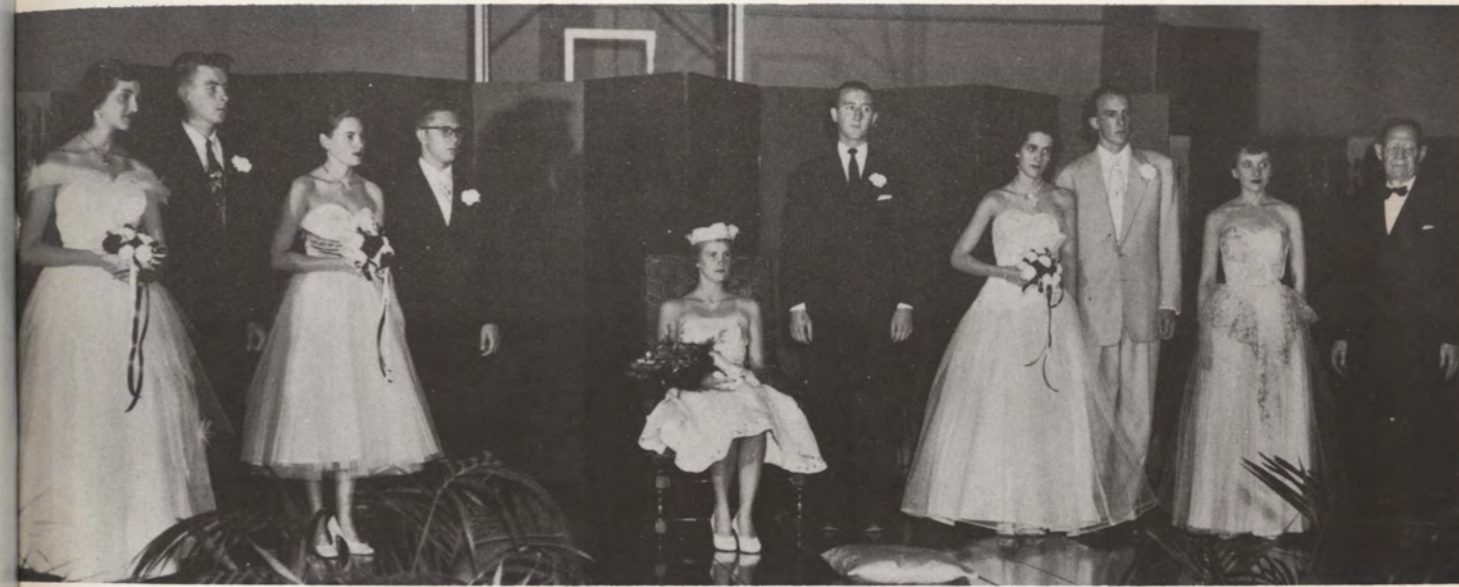
**Dorm**

**Halloween**

**Party**



# Homecoming



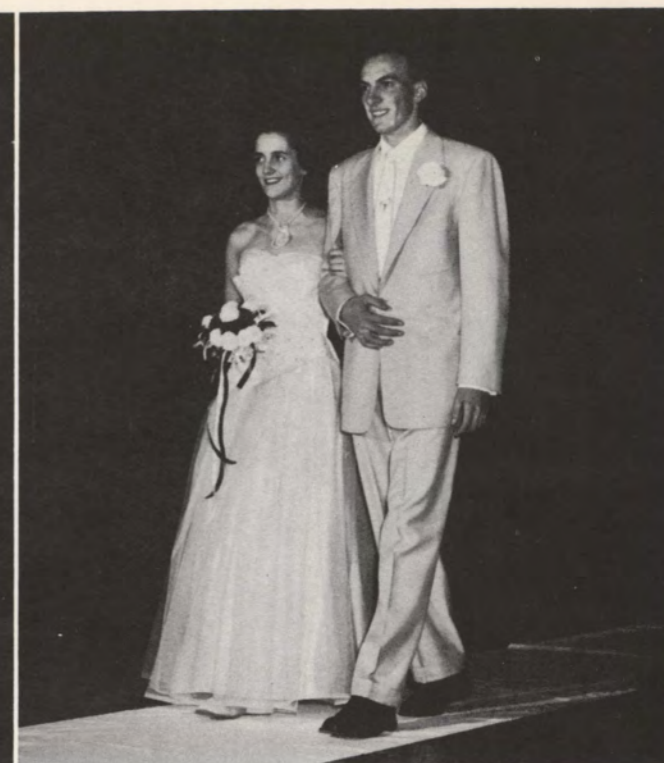




**Homecoming Queen Judy Larsen**



**Queen: Judy Larsen  
Escort: Howie Wiener**



**Attendant: Pat Grube  
Escort: Bob Hildreth**



**Attendant: Joyce Ford  
Escort: John Smith**



**Attendant: Marilyn Goodwin  
Escort: Bruce Knudsen**





## Pep Rally



## Dance



Beginning with a pep rally on the evening of Thursday, November 5, the student body rolled through the succeeding events with smoothness and school spirit. The traditional bonfire-pep rally which was held on Bass Field featured speeches by Coaches Drouillard and Asprey and Co-captains Girvin and Wagner. Following the yells, the group formed a snake dance and snaked its way to Peters Park.

The following evening the spotlight turned to Allee Gym where Morningsiders anxiously awaited the coronation of the 1953 Homecoming Queen. At 9:30 the procession of royalty began with Dr. Earl A. Roadman escorting Mary Claire Gunderson, Miss Morningside of 1952. Then followed the attendants to the queen, Marilyn Goodwin escorted by Bruce Knudsen, Joyce Ford escorted by John Smith, and Pat Grube escorted by Bob Hildreth and Miss Morningside of 1953, Judy Larsen, escorted by Howie Weiner. Removing the crown from the head of Miss Gunderson, Dr. Roadman, with few appropriate words, crowned Miss Larsen, investing in her all the rights and privileges of being Miss Morningside of 1953. Dance music for the occasion was provided by Don Oliver's band and featured the TV vocalist Vivian Dale.

Bright and early Saturday morning the prize-

seeking units of the parade assembled in Morningside to display their artistry to our campus neighbors. Upon the conclusion of the 8:30 procession, the first half of the double feature affair immediately moved downtown to join the remaining units for the parade through the business district. Floats which came out on top in the judging were Kappa Zeta Chi's "Make the Bunny Hop," first place; Alpha Tau Delta's "Dig Those Crazy Jacks," second place; and Gamma Iota Alpha's "From Here to Eternity," third place. The winners were announced at the half-time of the Morningside-South Dakota game.

After the parade, the sororities and fraternities played host to their alums at luncheons.

On Saturday evening a fighting Maroon eleven capped the perfect weekend by playing its most inspired game of the year against the heavily favored South Dakota State Jackrabbits. The game turned out to be a heartbreaker, as the Maroons trailing by two points lost by the score of 29-31.

To top off the entire weekend, Dr. Roadman gave a "gift" holiday Monday after homecoming. The eye-weary students took advantage of the vacation to catch up on their sleep and their homework.





Parade



Game





**Agora Leadership Dinner**



**Band Day**





## Freshman Day

It was open season on freshmen as the "M" Club and other upperclassmen played "Slaughter on Bass Field" on Freshman Day, October 29. An innocent by-stander might have wondered just who were the underdogs, though, as the freshmen held their own in the free-for-all.

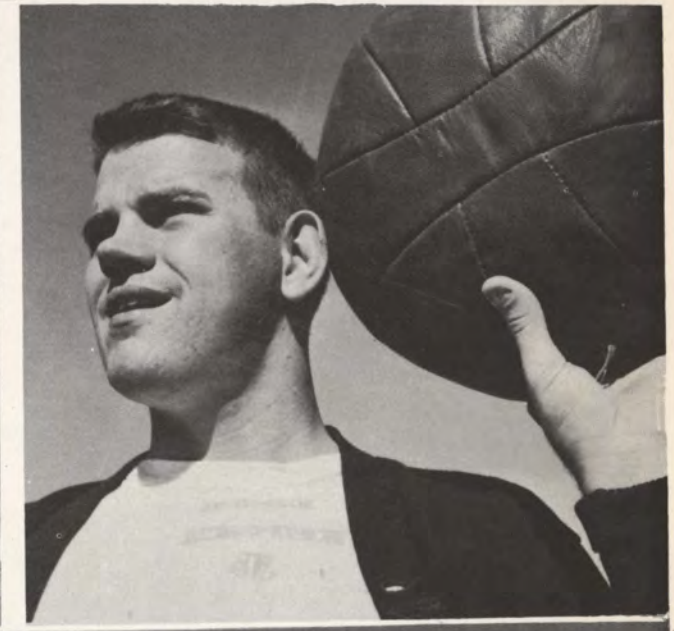
However, everyone left smiling and many of the merrymakers sported red, really red, faces. About a hundred seventy green beanies were removed from a hundred seventy freshmen heads which accounted for the smiles on the part of the greenies. The "underdogs," for the first time in the history of Morningside College, had won the contest.

After a preliminary "warm-up" of all male initiates by the "M" men, freshmen and upperclassmen participated in a sack race, an egg throw, a 50-yard handicapped race (the freshmen had sacks over their heads), a cane rush, and a tug-of-war. The latter event saw the

tenderfoots ruthlessly besting the supreme efforts of Larry Toner's 1924 Star. It is even doubtful that the machine was removed from the field under its own power as the greenies, not content with winning the tug-of-war, put the vehicle out of commission by turning it over on its side.

Student council prexy Miles Patton got the burlaps for the sack race mixed up and the freshmen won that contest also by running away from their struggling competitors. The frosh had the advantage with bottomless bags.

The morning event was followed by a lunch served at Dimmitt Hall by the Student council and an all-campus dance that evening in the Student Union. Tom Hackney, student council freshman director, was chairman of the event. Assisting Hackney in planning the brawl were Jim Smith, Kermit Isaacson, Roger Gohring, Bob Motter, and John Hantla.







## Gov. Beardsley



The convocation program for the 1953-54 academic year was initiated November 20, with a talk by the governor of Iowa, William S. Beardsley.

In his speech to the students Gov. Beardsley advised his listeners that "youth must always be ready to fight another round" in its quest for lasting peace and that "we must draw upon the lessons of the past" in order to chart a suc-

cessful, progressive program for the future. After his appearance at the college, Gov. and Mrs. Beardsley joined Dr. Earl A. Roadman, Dean Thomas Tweito, Dean Alva Tolf, Miles Patton, Gayle Patton, Stan Greigg, John Smith, Jim Springer, Ruth Grindberg, Art Barrett, and Ken Zeising at the Green Gables for luncheon. Student council was host at the noon event.







Faculty Women's Tea



Faculty Reception







**Christmas Formal**



**Women's Dorm  
Christmas Party**







**Miss Dimmitt's Birthday Party**



**Queen of Hearts**

**Dance**







**Phi Sigma Talent Revue**



**Women's Dorm Formal**







## Agora Carnival





## Eleanor Roosevelt

Over 1,500 persons came to hear Mrs. Franklin D. Roosevelt at Allee Gym Wednesday evening, April 7, 1954. Although not definitely answering the question, "Is America Facing World Leadership?", the former first lady left no doubt in the minds of her hearers that the United States held world leadership in the economic and military fields.

She was brought to the campus by the Student Council and shared the stage with the student council and its faculty advisors. Mrs. Roosevelt received three standing ovations from



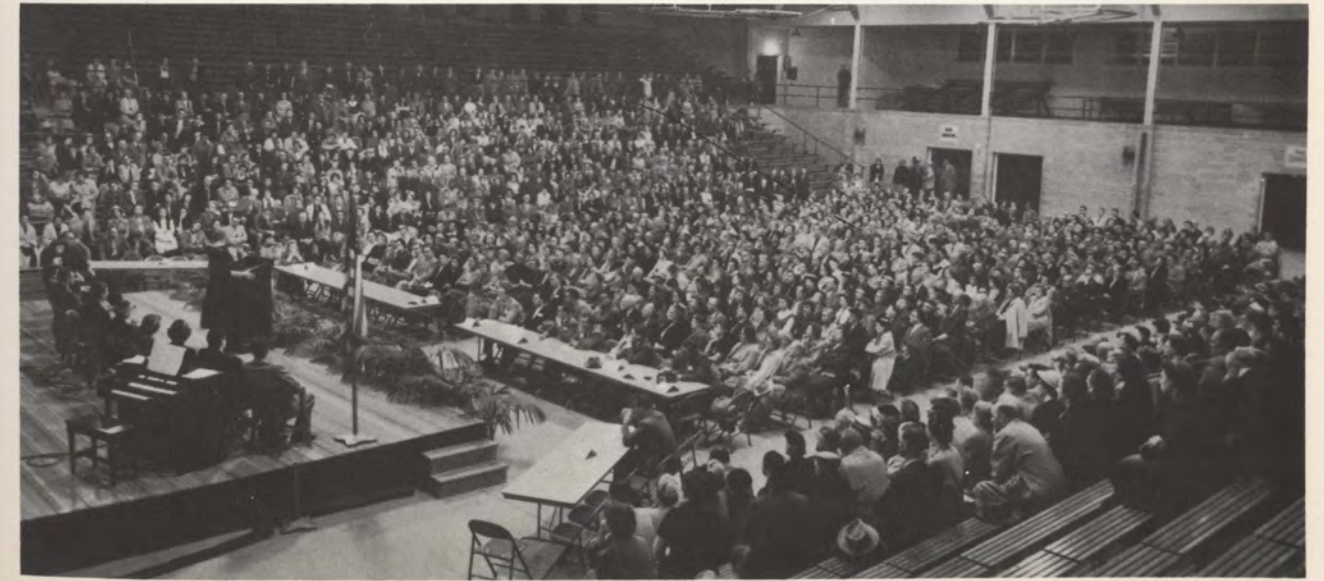
the enthusiastic crowd which asked questions after the speech.

Accompanied by student council members who met her at the plane, Mrs. Roosevelt went immediately from the airport to the men's dormitory where a press-conference was held.

The conference, which was open to students and faculty members, was held in the plushly furnished lounge of the men's residence hall. With an experienced graciousness Mrs. Roosevelt gave her considered answers to the questions asked.

Mrs. Roosevelt dined at Dimmitt Hall where she also stayed.

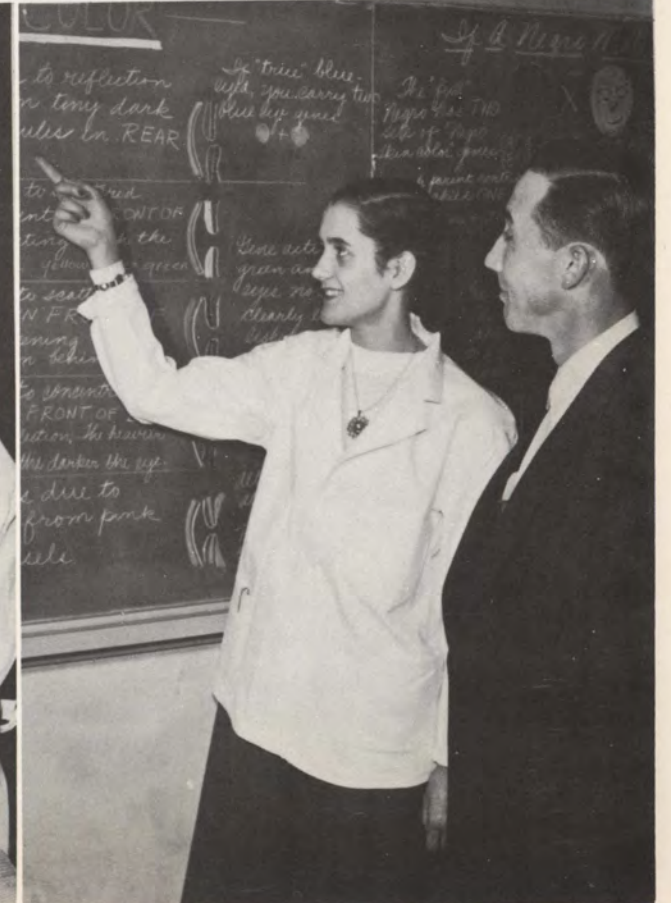
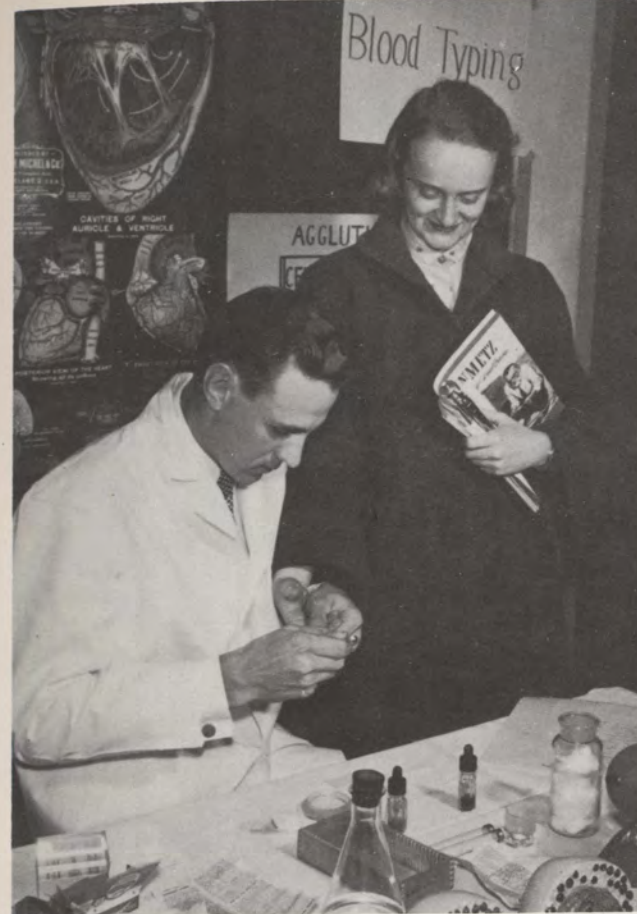
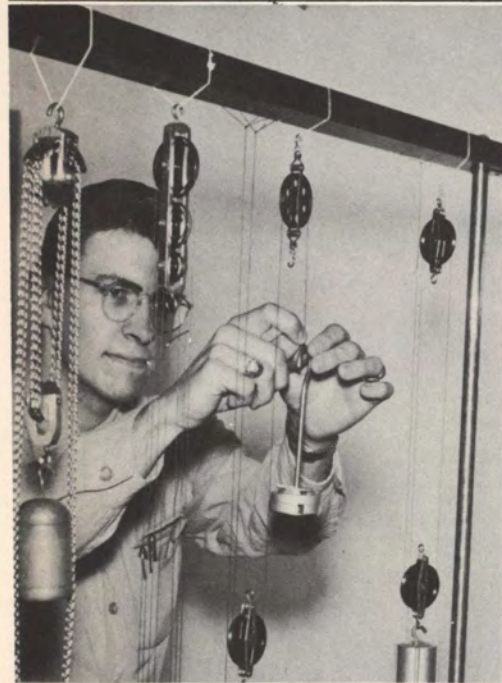
Autographs, handshaking, comment, and punch dominated the post-speech scene at Lillian Dimmitt Hall where more than 200 persons gathered to meet and speak with Mrs. Roosevelt at a reception held in her honor. Mrs. Roosevelt showed what is generally referred to as the "human side" of a great personality. Here the conversation concerned the habits of the former president, Fala (the Roosevelt's famous Scotty), and other commonplace occurrences of her life.







# Science Exposition







## Walk-Out Day







Club ATD



Mother



Daughter

Banquet







## Midyear Graduates

**Geneva Beyer:** B.A., English—Social Science.  
**Richard L. Blumeyer:** B.S., Physical Education—Economics; M Club.  
**Elain Bovis:** B.S., Economics—Business Adm.  
**Robert Creglow:** B.S., Business Adm.—Economics.  
**Ronald Doherty:** B.S., Physical Education—Sociology; M Club.  
**Kathleen Greene:** B.A., Education—History.  
**Allen McDonough:** B.S., Business Adm.—Economics; Phi Sigma, M Club.  
**Robert O'Donnell:** B.S., Business Adm.—Economics.  
**Glenn Reynolds:** B.S., Business Adm.—Economics.; Alpha Tau Delta.

**John Tjossem:** B.S., History—Sociology; Alpha Kappa Delta.  
**Barbara Thompson:** B.A., Sociology—Religion.  
**Mary Turner:** B.S., Education—Sociology.  
**Joan Usher:** B.A., English—Psych.; S.C.A., Kappa Chi, Alpha Kappa Delta, Zeta Sigma, F.T.A., W.S.G.A., Who's Who, Dorm President.  
**Karl Warner:** B.A., History—Business Adm.  
**Howard Weiner:** B.S., Education—Sociology; M Club.  
**Vernon Willits:** B.A., Sociology—Psych.  
**Margaret Wood:** B.A., Home Economics—Sociology; Home Economics, S.C.A.  
**Madeline Wyffels:** B.S., Education—Sociology.

## June Graduates

**Manou Atash:** B.A., Biology—Chemistry; Beta Beta Beta.  
**Violet Baker:** B.S., Home Economics—Sociology; Home Economics Club.  
**Jacqueline Barcal:** B.S., Home Economics, Sociology; Home Economics Club President, Intra-Sorority Council, Agora Queen, Cheerleader 4, F.T.A., Sioux Staff.  
**Arthur J. Barrett:** B.A., English—Sociology; Phi Sigma, Collegian Reporter Photographer 1, 2, 3, 4, Sioux Editor Chief 3, 4, Senior Class Vice President, Student Council, Who's Who, Religion Life Committee.  
**F. Robert Beck:** B.S., Business Adm.—Economics; Phi Sigma.  
**Robert E. Bennett:** B.A., Business Adm.—Live Stock Mkt.  
**Delbert L. Brewer:** B.S., Business Adm.—Accounting.  
**Douglas E. Burr:** B.A., Business Adm.—Economics; Phi Sigma.  
**Allen K. Butcher:** B.M.S., Music—English; Choir, Band, Phi Mu Alpha.  
**Walter L. Burton:** B.A., Business Adm.—Economics; Gamma Iota Alpha, Manuscript Club.  
**Charles E. Carter:** B.S., Business Adm.—Economics; Phi Sigma, Freshman Class President.  
**Marilyn D. Clark:** B.A., Social Science—English & Music.  
**Evelyn Decker:** B.A., English—History; Kappa Zeta Chi, College Theater Productions, Sioux Staff; F.T.A., Manuscript, Sigma Tau Delta, Phi Gamma Mu President, Collegian Reporter, Student Affairs Editor.

**Gertrude Draayom:** B.A., Speech—Sociology; Kappa Zeta Chi President, Alpha Psi Omega, F.T.A., S.C.A., Agora Board, Ishkoodah, Intra-Sorority.  
**Lyle Eckhart:** B.A., Economics—Business; Gamma Iota Alpha.  
**Gene Evers:** B.S., Business Adm.—History.  
**Joyce Ford:** B.A., English—History; Alpha Sigma President; Dormitory President, F.T.A., Alpha Psi Omega, Band, W.A.A., Intra-Sorority Member, Dorm Councilor.  
**Jefferson Fraser:** B.M.E., Music Education—English; Phi Mu Alpha, Choir, Orchestra, Band, M.S.M.  
**James Galli:** B.S., Physics—Mathematics; Alpha Psi Omega, Sigma Pi Sigma, Physics Club President, Dramatics, Tennis Team.  
**Stanley Greigg:** B.A., History—Economics; Phi Sigma, Student Council Vice-President, Senior Class President, Alpha Psi Omega, Who's Who.  
**Albert Garnmeister:** B.A., Business Adm.—Economics; Phi Sigma, Dormitory Council, Collegian Reporter.  
**David E. Gell:** B.S., Business Adm.—Art & Economics; Phi Sigma, Intra-Fraternity, Student Council, Collegian Reporter, Papoose Club, Dean's Honor Roll, Young Democrats Club.  
**Patricia A. Grube:** B.A., Biology—Psychology; Kappa Pi Alpha, Student Council 3, 4, Beta Beta Beta, Senior Class Secretary, Agora Board, Queen of Hearts, Homecoming Attendant, Who's Who, Collegian Reporter, Intra-Sorority Council, Intra-Science Council.  
**Clifford Hansen:** B.S., Physical Ed.—Mathematics & Biology; Phi Sigma, Beta Beta Beta.



# Autographs

- Verlin Heuton:** B.A., Sociology—Physical Education; Student Council 3, 4, Who's Who.
- Marjorie Hobbs:** B.S., History—English; Alpha Sigma, Mu Phi Epsilon, F.T.A., S.C.A., M.S.M.
- Paul Hummel:** B.S., Business Adm.—Economics; Alpha Tau Delta.
- Bob Hussey:** B.A., Accounting—Business Adm.; M Club.
- William Ide:** B.S.; Alpha Tau Delta, Basketball, Baseball, M Club.
- Elizabeth Jensen:** B.A., English—Education.
- Keith Johnson:** B.S., Business—Math. & Science; Alpha Tau Delta President, Who's Who, Sioux Staff.
- Wallace Johnston:** B.S., Accounting—History & Business Adm.; Phi Sigma President.
- Mary Kass:** B.S., Physical Ed.—Social Science.
- Donald Kivlighn:** B.A., Biology—Chemistry; Beta Beta Beta, Cosmopolitan Club.
- Marilyn Knudsen:** B.A., English & Psych.—Home Economics; Kappa Zeta Chi President, Student Council, Intra-Sorority Council, Alpha Kappa Delta, M.S.M., F.T.A., Agora Board, Beta Kappa, S.C.A.
- Olga Kott:** B.A., English—Home Economics; Alpha Sigma, Home Economics Club, F.T.A.
- Judith Larsen:** B.A., Physical Ed.—Science & Psychology; W.A.A. President, F.T.A., Homecoming Queen, Physical Education Major's Club.
- George Layton:** B.A., Speech—Sociology.
- Mark Link:** B.A., Biology—Chemistry.
- Sherman McKinley:** B.A., History—Business Adm.; Phi Sigma.
- Milton Madden:** B.M.E., Music—History; Phi Mu Alpha, Who's Who, Collegian Reporter, Religion Life, Cheerleader.
- Richard Norman:** B.A., Accounting—Business Adm.; M Club.
- Paul Otte:** B.A., Social Science—Religion; Kappa Chi, Choir, Band, Macbeth Play Cast.
- Joseph Pagen:** B.S., Physical Ed.—History; M Club, Football.
- Gayle Patton:** B.A., Speech—English; Alpha Psi Omega President, F.T.A.
- Miles Patton:** B.A., Business—History; Phi Sigma, Student Council President, Pre Law Club, Junior Class President, Intra-Fraternity Council, Who's Who.
- Constance Pecaut:** B.S., Home Economics—Secretarial Science; Kappa Zeta Chi, Home Economics Club.
- Melvin Pedersen:** B.S., Accounting—Economics; Gamma Iota Alpha President, Intra-Fraternity Council.
- Willard Pickford:** B.S., Physical Ed.—History; M Club President, Football.
- Margaret Porter:** B.S., Religion & Philosophy—English; Collegian Reporter.
- Helen Price:** B.A., Religion—English; Sophomore Class President, Grace Collegians, Kappa Chi.
- Alma Rexwinkel:** B.M.E., Music—English; Mu Phi Epsilon, Choir, Band, Madrigal, F.T.A., Sigma Tau Delta, Dorm Counselor.
- Richard Ruggles:** B.S., Business Adm.—Economics.
- Charles A. Rush:** B.S., Business—English; Alpha Tau Delta President.
- John H. Smith:** B.A., Sociology—English & Speech; Student Council, Phi Sigma President, Intra-Fraternity, Senior Class Treas., Chairman Religion-in-Life, S.C.A. President, F.T.A., C.R., Track 2, Kappa Chi, M Club.
- Pierce Smith:** B.A., History—Speech; Phi Sigma, Dramatics Club, Radio Workshop.
- James C. Springer:** B.S., Physical Ed.—History; Phi Sigma President, Student Council, Who's Who, S.C.A., F.T.A., Associate Editor C.R., Director Press Bureau, Intra-Mural Director.
- Ben Storek:** B.A., Business Adm.—English; Gamma Iota Alpha, S.C.A., Dramatics Club, Kappa Chi, Radio & T.V. Workshop, Cosmopolitan Club, Beta Kappa.
- Robert Sullivan:** B.A., Biology—Chemistry; Beta Beta Beta, Phi Mu Alpha, and, Biology Club.
- Alice Suzuki:** B.A., History—Secretarial Science; Alpha Sigma, Student Council, Pi Gamma Mu, Alpha Kappa Delta, Cosmopolitan Club, F.T.A., Ishkoodah, Intra-Sorority Council, Gamma Iota Alpha "Sweetheart."
- Howard Thompson:** B.S., Accounting & History; Pre Law Club.
- Duane Tritle:** B.A., English—Mathematics; Sigma Tau Delta, Pi Kappa Delta, Kappa Chi, S.C.A., Phi Mu Alpha, Choir, Band.
- Kenneth Van Der Sloot:** B.M.S., Music—English; Alpha Tau Delta, Phi Mu Alpha, Choir, Band, Madrigal.
- Fdwin Vorisek:** B.S., Business—Economics.
- Walter Wagner Jr.:** B.S., Physical Ed.—History. M Club, Football (4); Basketball (2), Baseball (4), Golf (4).
- Delores Whitmer:** B.A., Education.
- Herbert Wilson:** B.S., Business Adm.—History.
- Merne Zackarias:** B.S., Business Adm.—Chemistry.



