

The

SIOUX

1948

65.55.17

1948

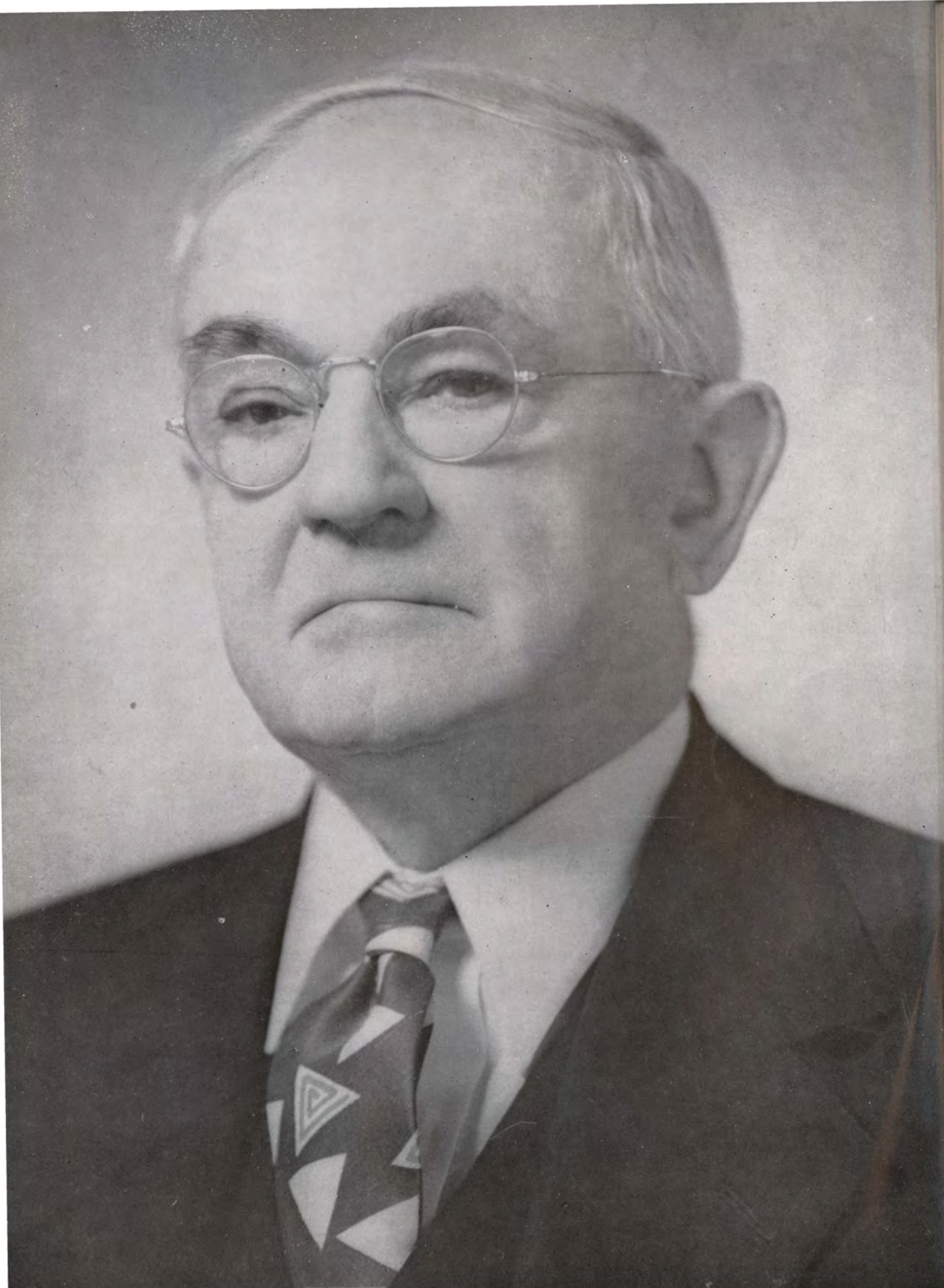
SIOUX

MORNINGSIDE COLLEGE
SIOUX CITY IOWA

The 1948

SIOUX

MORNINGSIDE COLLEGE
SIOUX CITY - IOWA



DEDICATION

Youth in contrast—this is the American college campus. Our favorite is Morningside, which has contrast of people, ideas, and activities—a silhouette of progress that is the cornerstone of any fine school.

The very symbol of such college spirit is Dr. Robert N. Van Horne, who came to Morningside in 1901, and retired from his numerous activities on the campus in 1947. Dr. Van Horne is our professor, our counsellor, our friend. Because we appreciate his guidance and value the influence of his personality, we dedicate the 1948 Sioux to this beloved and respected professor.

Dr. Robert N. Van Horn



CONTENTS

ADMINISTRATION



STUDENT BODY



ATHLETICS



ON THE CAMPUS



FINE ARTS



ORGANIZATIONS



SIOUX STAFF

DARLENE TAYLOR
EDITOR



BILL SEIBERT
MANAGING EDITOR

DARYL JAMES
BUSINESS MANAGER



KENNETH COX
PHOTOGRAPHER



ANN BARRETT
ASSISTANT EDITOR



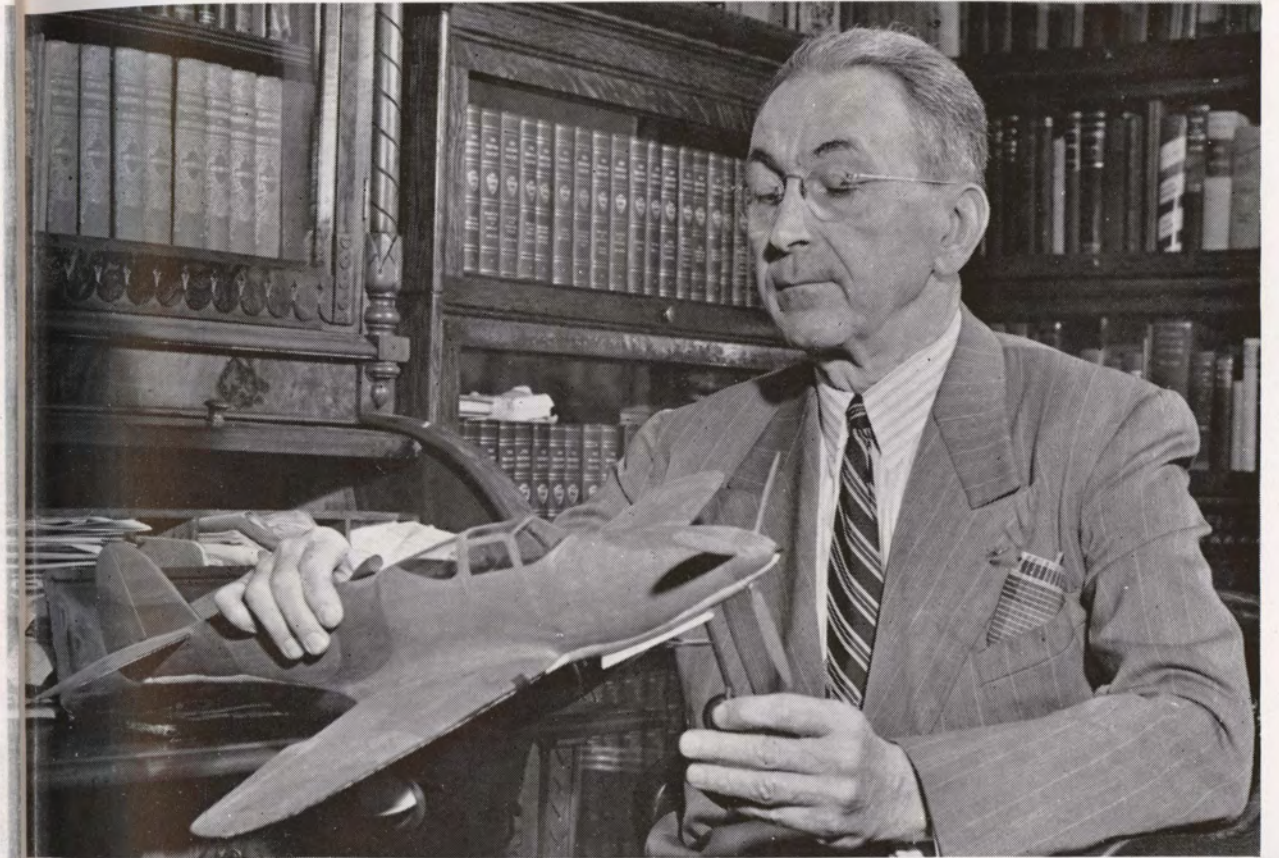
LAURIE LAKE
ARTIST



VERA DE VAUL
ASSISTANT EDITOR



ADMINISTRATION





PRESIDENT EARL A. ROADMAN

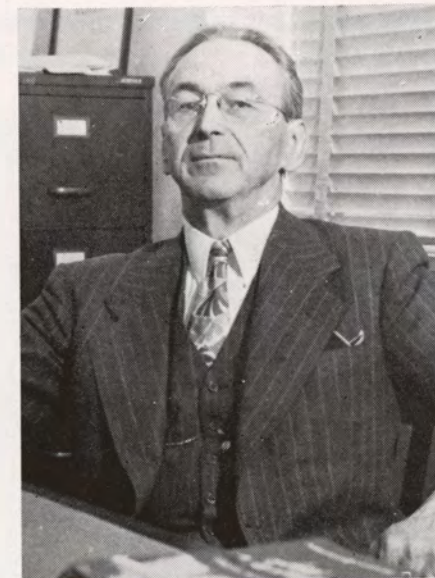


NELSON A. PRICE, D. D.
Vice President

THOMAS E. TWEITO, PH. D.
Dean of the College



THE DEANS



MYRON E. GRABER, PH. D.
Dean of Men



ALVA TOLF, M. A.
Dean of Women



LELIA BARBER, M. A.
Economics



FRANK BEAN, D. D.
Religion



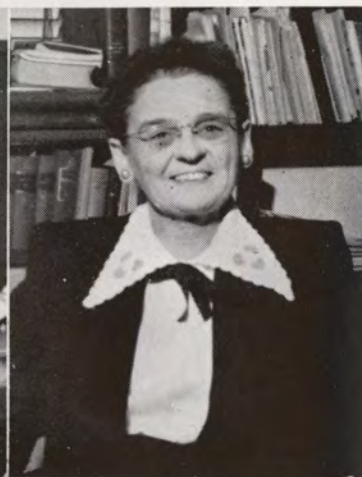
MARJORIE BOYD, M. A.
Spanish, English



SELMA BARON, B. A.
English



CHARLES BERKSTRESSER, M. D.
College Physiican



VESTA BURRIS, B. A.
Librarian



CLIFFORD BOWMAN, M. A.
History



RAY BURKS, M. A.
English



RODNEY BLACK, PH. D.
Chemistry



CLINTON BURRIS, M. A.
Librarian



ALBERT BUCKINGHAM, B. A.
Men's Athletics



GLENN BUSHYAGER, M. A.
Mathematics



ROY CHATTERS, PH. D.
Biology



PAUL CLARK, M. A.
Admissions



MELBA CRIFE, B. A.
Speech



HARRY CLAYTON, M. A.
Vocational Appraiser



FLORENCE COLE, ED. D.
Women's Athletics



SIDNEY COLLINS, ED. D.
Accounting



LESLIE DAVIS, B. A.
Men's Athletics



LILLIAN DIMMIT, L. H. D.
Latin



LAURA FISCHER, A. M.
German



IRA GWINN, M. S.
Registrar



FLORENCE KINGSBURY, A. B.
Alumni Secretary



LEO KUCINSKI, MUS. B.
Violin & Orchestra



RUSSELL EIDSMOE, A. M.
Education



ETHEL ELLIOTT
Director of Barn



GORDON FAIRCHILD, A. B.
Biology



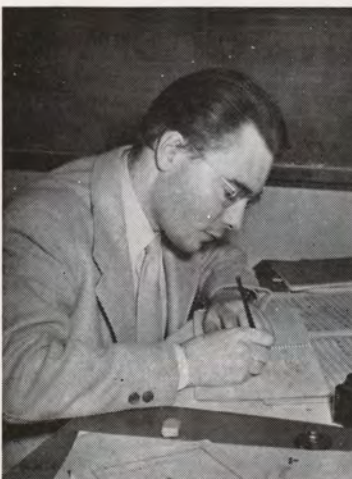
ETHEL KUCINSKI, MUS. B.
Pianoforte



CLARA GRAY, MUS. B.
Pianoforte



HORACE HAWTHORN, PH. D.
Sociology



HARRY HARTMAN, M. S.
Admissions



LOIS GRAMMER, MUS. M.
School Music



CHARLES GARLAND, A. M.
Music Theory



RICHARD FLOWERS, A. M.
Speech



ROY LANGLEY
Art



BETTY LLOYD, A. M.
French



ROBERT LOWRY, MUS. B.
Wood-Winds

PAUL MACCOLLIN, MUS. B.
Voice

ELIZABETH MACCOLLIN, A. B.
Voice



NELONTINE MAXWELL, A. B.
Mathematics

MIRAH MILLS, A. M.
English

HELEN PHELPS
Assistant Registrar



LOTTIE MACARTHUR
Bookkeeper

TERESE MALLOY
Engineering Drawing

MERRILIE MATHER, M. A.
English



ELIZABETH OLLIVIER, B. M.
Violincello

MARION PATCH, R. N.
College Nurse

ETHEL RASMUSSEN, A. M.
English



MARCIA MCNEE, A. M.
Education

RAYMOND MILLER, LITT. D.
Economics

CHARLES OBYE, B. S.
Men's Athletics



JAMES REISTRUP, MUS. B.
Pianoforte

WILLIAM ROBERTS, PH. D.
Psychology

ERNEST SAUNDERS, PH. D.
Religion



CLARA SHEDD
Librarian



RUBY SMITH, A.M.
Home Economics



RUTH SIMOND, PH. D.
Mathematics



LEROY SWEET
Business Manager



SAMUEL WALSH, S.T.B.
Philosophy



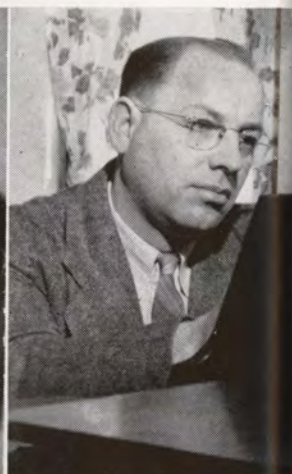
JOHN WALKER, D. D.
Bookstore Manager



GRACE SMITH, A. M.
Art



ARNOLD STEINTJES, A. M.
Chemistry



EMORY STEWART, B. S.
Voice



CORINNE TAYLOR, M. ED.
Commercial



MARION VAN DER MATEN, B. M.
Strings



WINNIFRED WEBB, A. B.
Women's Athletics



STERLING STEWART, B. S.
Physics



CARL STROMME, PH. D.
Religion



MILDRED SWEET, A. M.
Piano



JOHN WEISENSEE, M. A.
Vocational Appraiser



HARRY WILCOX, PH. D.
Biology



RAY WINNEKE
Custodian



JOHN WINETON, A. M.
Physics



FAITH WOODFORD, MUS. B.
Piano



ETHEL MURRAY, A. M.
History

PHILIP GOVEDARE, A. M.
English

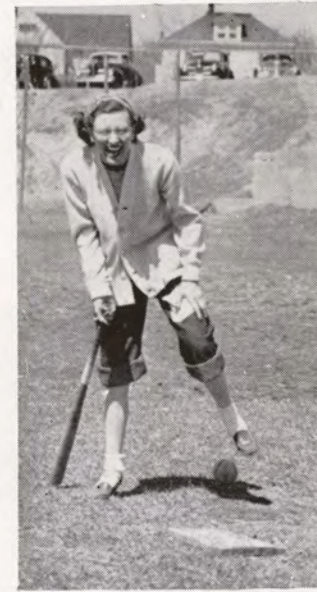
ROBERT GRAHAM, A. M.
English

EDWARD SAMORE
Accounting

RETIRED FACULTY



Seated: Thomas Stephens, Laura Fischer, Robert Van Horne.
Standing: Henry Kanthlener, James Coss.

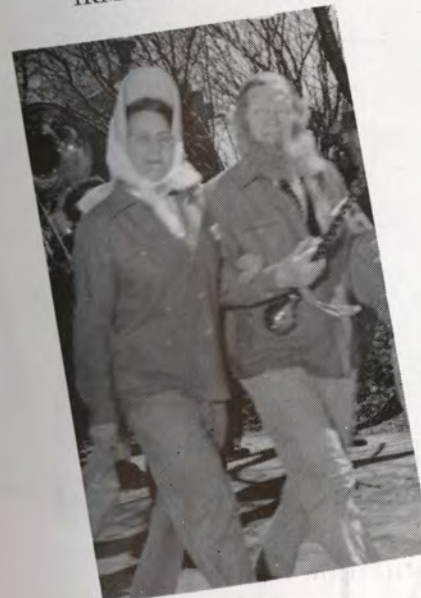


THE THINKER



IRMA AND EARL

HARD UP?



STRIKE!
THERE NOW!

CONFUSION





MAIN HALL



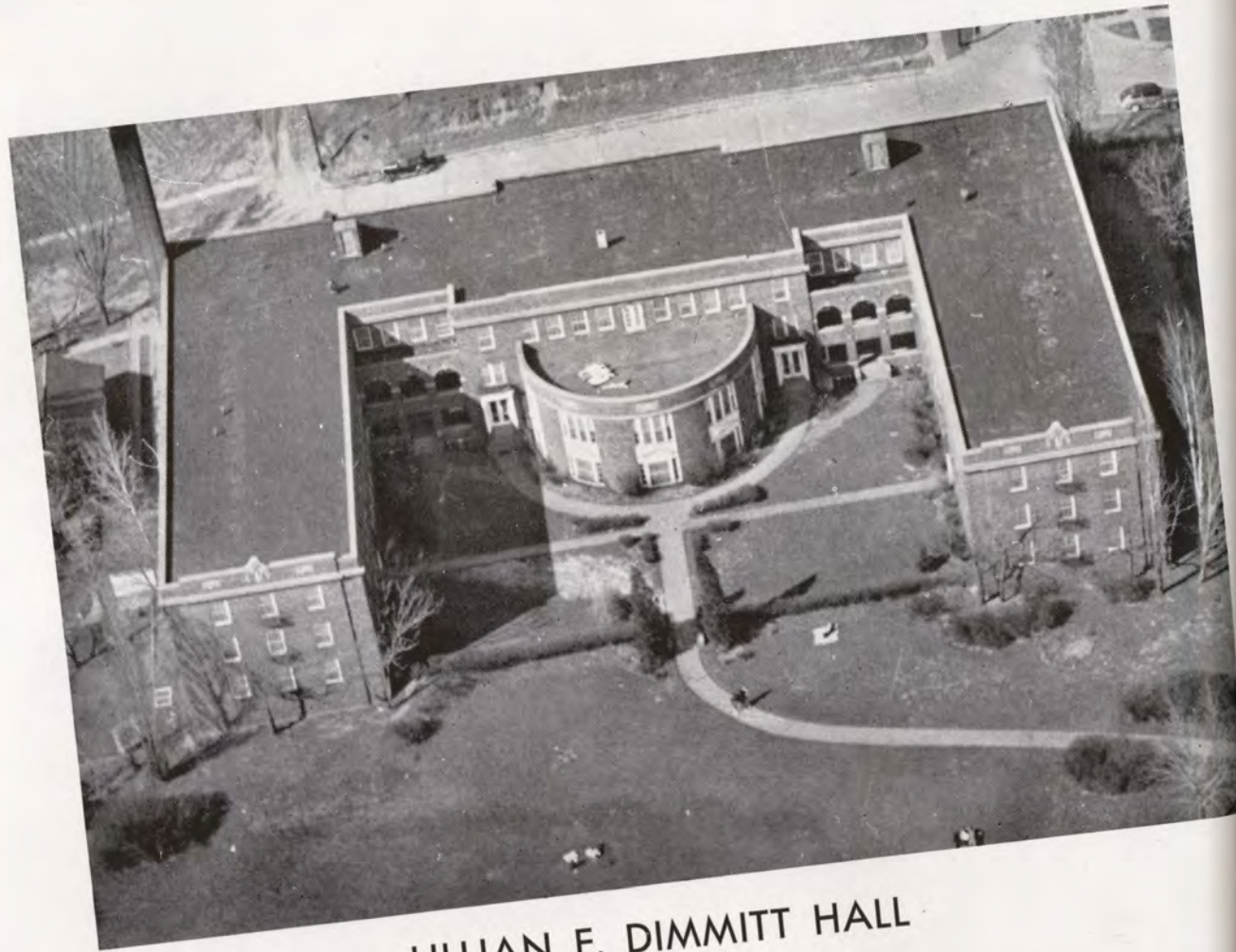
CONSERVATORY



ALUMNI GYMNASIUM



THE BARN

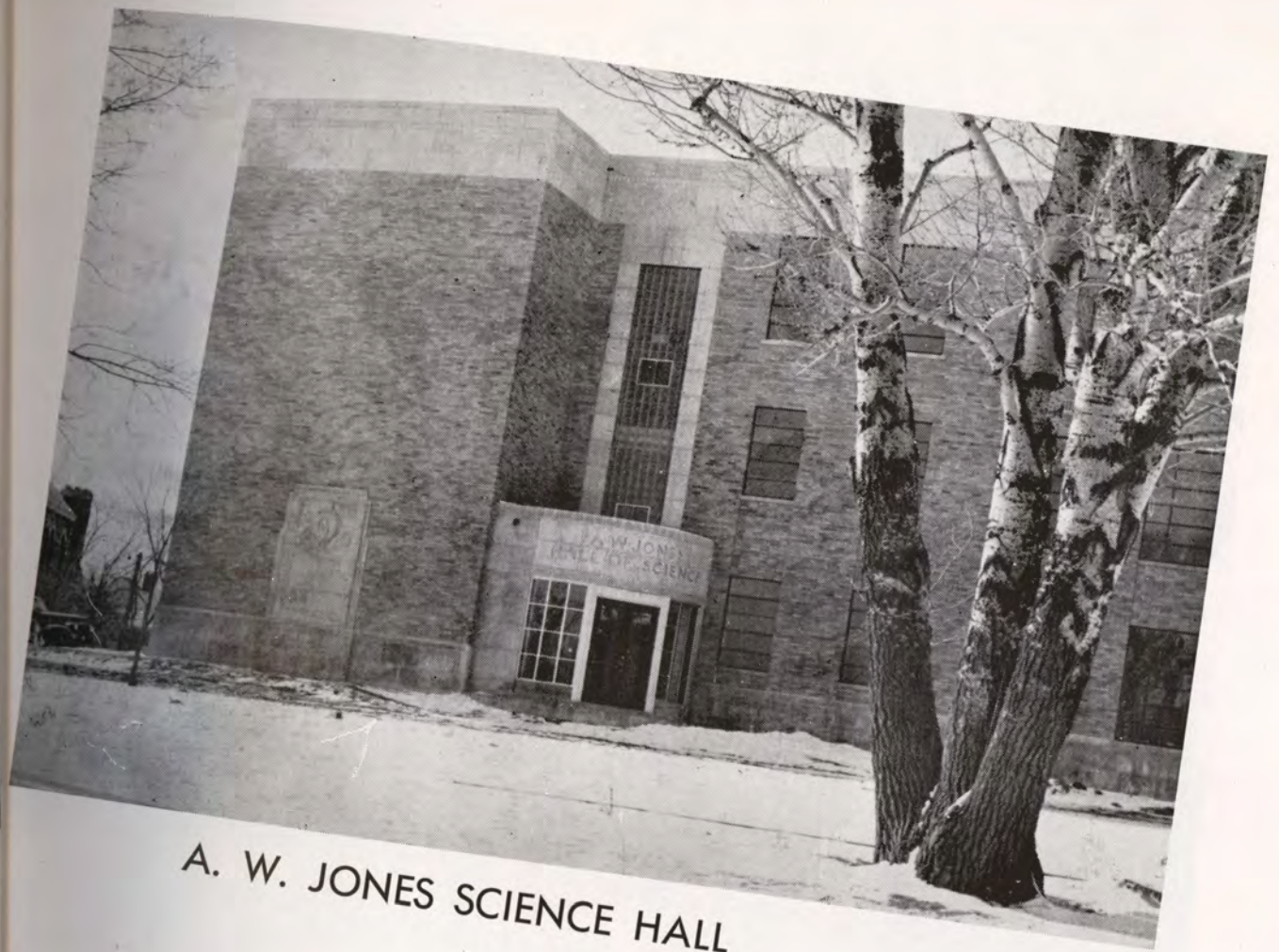


LILLIAN E. DIMMITT HALL

Miss Lillian Dimmitt, Dean of Women Emeritus, received further honor this spring when the spacious residence hall for women was dedicated in her name. The "dorm" was officially christened Dimmitt Hall in appreciation of her great guidance to the students and her service to the college for 55 years. The students and faculty are likewise honored in having the dormitory commemorate her name.



Miss Dimmitt



A. W. JONES SCIENCE HALL

In the bustle of college activity, Morningsiders have watched the new Science Hall gradually crawl skyward. Now at the close of the year, the newest building stands completed. The science department is happy with its new home, the larger amount of space, and better facilities. The hall was dedicated on Commencement Day, May 31st, in the name of Mr. A. W. Jones of Cherokee, Iowa. This building makes an imposing addition to the campus.



STUDENT BODY



GRACE CHURCH

One of the most popular centers for youth on the campus is Grace Methodist Church. Dr. John Buthman is the minister. Every year Grace welcomes all students to campus church life. Grace Church provides classes for college students, a college youth fellowship, a place to attend weekly chapel hours, and a sanctuary for worship. Grace is truly "Our church home away from home."

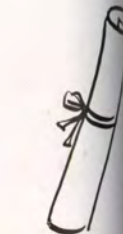
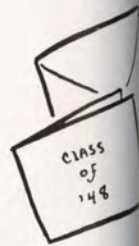
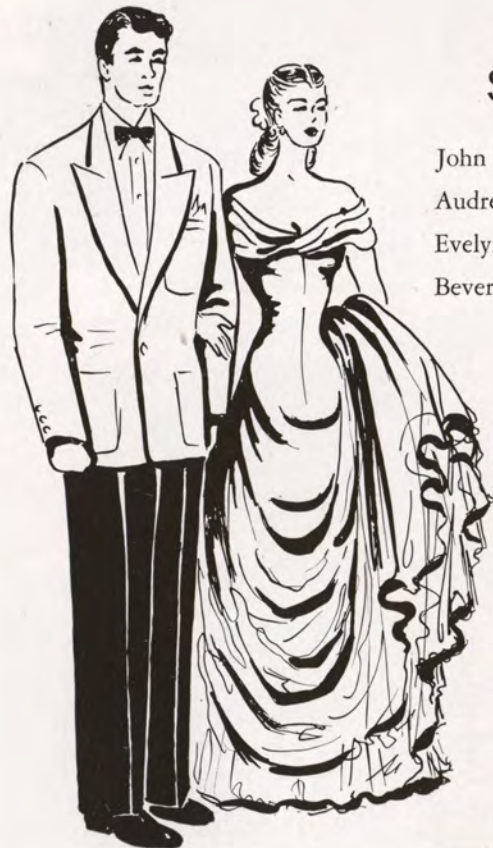




JOHNSON, LAUDE, HALL

SENIOR CLASS OFFICERS

- John Patterson *President*
- Audrey Laude *Vice President*
- Evelyn Hall *Secretary*
- Beverly Johnson *Student Council*



MERLE AMELANG
Louisville, Nebr.

JOHN BALKEMA
Sioux City, Ia.

Morningside Players 2; Sioux 2; Collegian Reporter 4; YMCA 1, 2, 3, 4, Soc. Chairman 1, 2, Vice Pres. 3; Kappa Chi 3, 4; Pre-Engineers 1; Grace Collegians 1, 2, 3, 4, Soc. Chairman 3, Vice Pres. 4; Sigma Tau Delta 4, Vice Pres. 4.

RAMON BARBERO
Panama City, Panama

Cosmopolitan 1, 2, 3, 4, Pres. 4; Pi Sigma Iota 1.

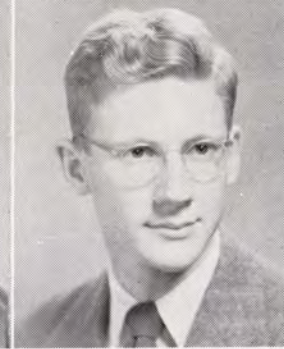
MARGARET BARKS

Orange City, Ia.

Agora 2, 3, 4; Choir 2, 3; Collegian Reporter 3; Papoose 3, 4; YWCA 2, 3, 4; FTA 4; MFTC 4; Grace Collegians 4; Kappa Zeta Chi 2, 3, 4, Chaplain 3, Directress 3, 4; Vesper Choir 4; Northwestern Junior College 1.

VICTORIA PAT BLATT
Norfolk, Nebr.

SENIORS



JANE BRATT
Sioux City, Ia.

WILLIAM BRIGGS
Sioux City, Ia.

Basketball 1, 3, 4; M Club 1, 2, 3, 4, Sec.-Treas. 3; Track 1; Harvard Basketball Coach 3; Student Council 3, 4; FTA 3, 4; Student Council Rep. 3, 4; MFTC 3, 4; Freshman Class Vice Pres.; Junior Marshall Who's Who.

MURIEL LAMBERT BRIGGS

Sioux City, Ia.

Agora 3, 4; WAA 3, 4, Pres. 4; P. E. Majors 3, 4, Pres. 3; Student Council 3, 4; WSGA Pres. Summer of '47; FTA 4; MFTC 4; Kappa Zeta Chi 4, Corres. Sec. 4; Augustana College, '42-'44. Who's Who.

FRANKLIN BROWN
South Sioux City, Nebr.
U. of North Dakota 1; Choir 1; Men's Glee Club 3.





SENIORS

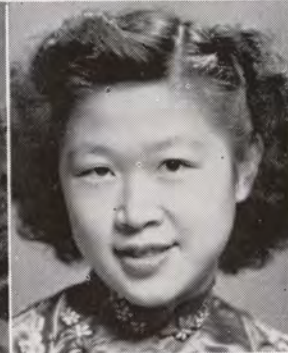


CLAUDE DAVIS
Aurelia, Ia.
Iowa U. 2, 3; YMCA 3; F
3, 4; MFTC 3, 4; Sigma T
Rho 1, 2.

DONALD FOUNTAIN
Sloan, Iowa
U. of Dubuque 1944-45; Van-
derbilt 1946-47; Basketball 1;
Gamma Iota Alpha 2; Phi
Kappa Psi 2, 3, Sec. 2, Vice
Pres. 3; Owl Club 3.

EUNICE BRUCE
Cherokee, Ia.

Agora 1, 2, 3, 4; Sioux City
Symphony 1, 2; Ishkoodah 1;
YWCA 1, 2, 3, 4; Kappa Chi
1, 2, 3, 4, Treas. 2; Biology
Club 2, 3, 4, Vice Pres. 3,
Pres. 4; Grace Collegian 1, 2,
3, 4; Cosmopolitan 2, 3, 4,
Vice Pres. 2, Pres. 3; Beta
Beta Beta 3, 4.



KATHERINE DING
Fochow, China

ROBERT M. FRANKEN
Schaller, Iowa
Band 1; YMCA 3, 4, Treas.
3; Kappa Chi 4; Pi Gamma
Mu 4; Religious Life Com-
mittee 4.

ROBERT CHILSON
Sioux City, Ia.



ALICE DUNN
Iowa Falls, Ia.
Ellsworth College Conser-
vatory Ellsworth Junior Col-
1, 2, 3; Choir 4.

GARY C. GALL
Sioux City, Iowa
Alpha Tau Delta 2, 3, 4, Pres.
4.

GORDON CHRISTENSEN
Sioux City, Ia.

U. of Iowa 1; Northwestern
State Teachers College 1; Stu-
dent Council 2, 3, 4; Sioux
Sports Editor 3; Collegian Re-
porter Sports Editor 3; Pa-
poose 3, 4, Sec. -Treas. 3;
Alpha Tau Delta 3, 4.



VESTA FELLER
Cherokee, Ia.
Agora 1, 2, 3, 4; Sioux
ture Editor 3; WSGA T
Club 1, 2; Student Council 4;
2; Ishkoodah 1; Papoose
YWCA 1, 2, 3, 4, Treas
Pres. 4; FTA 4; MFTC
Kappa Chi 3, 4, Vice Pre
koodah 1; YWCA 1, 2, 4;
Manuscript 1, 2, 3, 4,
Pres. 3, Sec.-Treas. 4; G
Collegians 1, 2, 3, 4.
Carlisle, Ia.

MYRTLE E. GEAKE
Wall Lake, Iowa
Agora 1, 2, 3, 4, Pres. 4;
WAA 1, 2, 3, 4, Pub. Chair-
man 4, M sweater and letter
4; P.E. Majors 3, 4, Pub.
Chairman 4; Yale-Harvard
Team 1, 2, 3, 4; Madrigal
Club 1, 2; Student Council 4;
Sioux Staff Senior Editor 4;
Collegian Reporter 1, 2, 4;
WSGA Summer Sec. 3; Ish-
koodah 1; YWCA 1, 2, 4;
Grace Collegians 3, 4; Inter
Sorority Council 4; Who's
Who 4; FTA 2, 3, 4, Pub.
Chairman 4; MFTC 2, 3, 4;
Biology Club 1, 2, 3, 4; Beta
Beta Beta 3, 4, Sec. 4; Coun-
cilor 4, Sec. 4; Kappa Zeta
Chi 2, 3, 4, Sec. 3, 4, Vice
Pres. 4.



IRENE HACKETT
Sioux City, Iowa

Agora 1, 2, 3, 4; Ishkoodah
1; Kappa Pi Alpha 2, 3, 4,
Treas. 3, Chaplain 4; Phi
Sigma Iota 3, 4.

GLENNIS HAITZ
Sioux City, Iowa

Nebraska State Teachers Col-
lege 1943-45; Colorado U.
Summer 1946; Agora 4; WAA
Sec. 1; FTA 1, 4.



EVELYN HALL
Everly, Iowa

Agora 1, 2, 3, 4; Choir 1, 2,
3, 4; Band 1, 2, 3, 4; Mu Phi
Epsilon 4, Chorister 4; Ish-
koodah 1; YWCA 1, 2; Inter
Sorority Council 3; Alpha
Sigma 2, 3, 4, Historian 2,
Vice Pres. 3; Sec.-Treas. Sen-
ior Class.

**CLARICE MOONE
HAMMERSTROM**
Sioux City, Iowa

Agora 1, 2; Choir 1, 2, 3;
FTA 2; MFTC 2; Inter So-
rority Council 4; Kappa Pi
Alpha 2, 3, 4, Critic 2, Soc.
Chairman 3, Pres. 4; Sec.
Freshman Class.

DORIS CORRIE
Sioux City, Ia.

WAA Pres. 4; Kappa Zeta
Chi 4.



PATRICIA FOULKE
Carlisle, Ia.
Graduate of Iowa Meth
Hospital School of Nurs
Choir 3, 4.

THOMAS K. GRINDBERG
Sioux City, Iowa
S. D. State College 2; YMCA
Treas. 1; Biology Club 1, 3;
Cosmopolitan 1; Gamma Iota
Alpha 3, 4.



SENIORS





SENIORS



MAURICE ISAACSON
Sioux City, Iowa

Pasadena Junior College; U. Los Angeles; FTA 1, 2, 3, 4; MFTC 3, 4; Pre-Engineer 1, 2, 3, 4.

SENIORS



ROBERT LAPSLEY, JR.
Newburgh, N. Y.

Biology Club 1, 3; Beta Beta Beta 4.



HELEN HARDING
Estherville, Iowa

I. S. T. C. 1 summer; Agora 1, 2, 3, 4; Junior Rep.; Choir 1, 2, 3, 4; Ishkoodah 1; YWCA 1, 2, 3, 4; FTA 4; Grace Collegians 1, 2, 3, 4; Kappa Pi Alpha 2, 3, 4.



BEVERLY JOHNSON
Sioux City, Iowa

Agora 1, 2, 3, 4; Student Council 4; Ishkoodah; YWCA 4; Cosmopolitan 3, 4, Sec. 1; Alpha Sigma 3, 4; Sigma Delta 4; Pep Club Treas.



ERNEST LARSON
Emmetsburg, Iowa

Emmetsburg Junior College 1, 2; Student Council 4; YMCA 4; Kappa Chi 3, 4; Phi Gamma Mu 4.



MARY LOU LEMBCKE
Sioux City, Iowa

Agora 1, 2, 3, 4; Student Council 4; Ishkoodah 1; YWCA 1, 2; MFTC 2, 3, 4; Vice Pres. 3, Pres. 4; Inter-Sorority Council 4; Kappa Pi Alpha 2, 3, 4, Serg.-at-Arms 2, Treas. 3, Pres. 4.



ALBERT HARTIN
Sioux City, Iowa



AUDREY LUCILLE LAUDE
Kingsley, Iowa

Virginia Junior College 1, 2; Inter-Sorority Council 4; Kappa Pi Alpha 2, 3, 4, Chaplain 2, Corres. Sec. 3, 4; Homecoming Queen Attendant 4; Senior Class Vice Pres.

Agora 1, 2, 3, 4; Choir 1, 2; Madrigal Club 3; Sioux City Symphony 2; Band 1, 2, 3, 4; Mu Phi Epsilon 4, Recording Sec. 4; Ishkoodah 1; YWCA 1, 2; Inter-Sorority Council 4; Kappa Pi Alpha 2, 3, 4, Chaplain 2, Corres. Sec. 3, 4; Homecoming Queen Attendant 4; Senior Class Vice Pres.



ALBINA RUTH KOZAK
Virginia, Minnesota

Virginia Junior College 1, 2; Inter-Sorority Council 4; Kappa Pi Alpha 2, 3, 4, Chaplain 2, Corres. Sec. 3, 4; Homecoming Queen Attendant 4; Senior Class Vice Pres.



JAUCILE LONG
Chattanooga, Tenn.

Chattanooga U. 1 year; Majorette 3, 4; Morningside Players 3, 4; Debate Team 3; YWCA 3, 4, Soc. Chairman 4; Grace Collegians 3, 4, Rec. Chairman 3, 4.



ROBERT HELD
Sioux City, Iowa

Basketball 1, 2, 3, 4; Baseball 3; M Club 2, 3, 4; Papoose Club 3, 4, Vice Pres. 3; Alpha Tau Delta 1, 2, 3, 4; Junior Class Vice Pres.

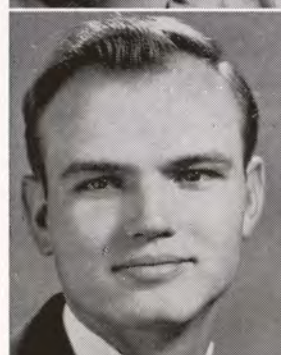


FLOYD KROHN
Watertown, So. Dak.

S. D. State College 1 year; U. of Minnesota 1 quarter.

RICHARD A. LECHNER
Sioux City, Iowa

Washington U. 1/2 yr.; G.I.A. 3, 4.



JANYCE LEHMBERG
Soldier, Iowa

Agora 1, 2, 3, 4; WAA 1, 2; Choir 1, 2, 3, 4; Ishkoodah 1; YWCA 1, 2; FTA 4; Inter-Sorority Council 3, 4; Alpha Sigma 2, 3, 4, Historian 2, Sec. 3, Treas. 3, Critic 4; Sec. of Junior Class; Homecoming Queen Attendant 4.



FRANK LAMBERT
Sioux City, Iowa

Sophomore Class Pres.; Student Council 2; Sports Editor and Publicity Editor of M. Inside College 3, 4.



ARTHUR HORST
Sioux City, Iowa

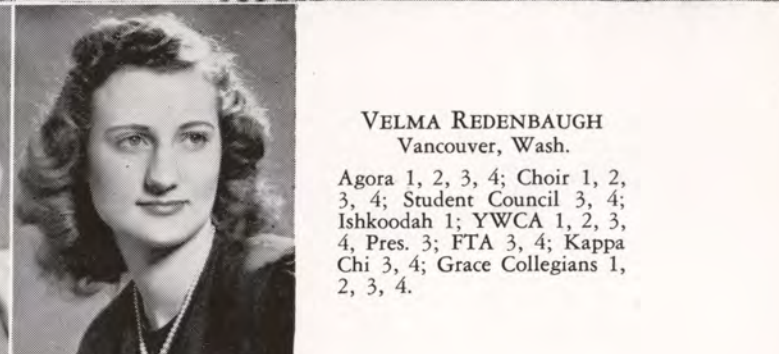


VICTOR MCCASLEN
Greenfield, Iowa

G.I.A. 1, 2, 3, 4, Sec.-Treas. 2.

SENIORS

SENIORS



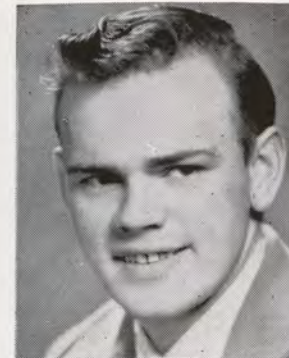
VELMA REDENBAUGH
Vancouver, Wash.

Agora 1, 2, 3, 4; Choir 1, 2, 3, 4; Student Council 3, 4; Ishkoodah 1; YWCA 1, 2, 3, 4, Pres. 3; FTA 3, 4; Kappa Chi 3, 4; Grace Collegians 1, 2, 3, 4.

CHARLES H. RICHARDS
Whiting, Iowa
Pre-Engineers 3, 4.

JOHN L. RIEBHOFF
Burt, Iowa
Cheerleader 1, 2; Choir 1, 2, 3, 4; Student Council 1; YMCA 1, 2; Kappa Chi 1, 2, 3, 4, Treas. 3; Grace Collegians 1, 2, 3, 4; Freshman Pres.; Religious Life Committee 1.

LORENA RIEBHOFF
Burt, Iowa
Waldorf College 2 years; Agora 4; Choir 4; Student Council Summer of '47; YWCA 4; Kappa Chi 4; Grace Collegians 4.



JOHN PATTERSON
Waverly, Iowa

Senior Class Pres. 4; Sigma Tau Delta 4, Pres. 4; Pi Gamma Mu, Pres. 4; Student Council 4.



HOWARD G. PETERSON
Sioux City, Iowa

Univ. of Notre Dame 2, 3; Football 1, 3, 4, All-Conference 3, Captain 4; M Club 1, 2, 3, 4, Pres. 4; Student Council 4, Pres. 4; G.I.A. 3, 4; Phi Gamma 1, 4, Pledge Master 4.



PAUL RALSTON
Somers, Iowa

Minor State Teachers College 2 years; Men's Glee Club 1, 3; Papoose Club 3, 4; YMCA 1, 3, 4; FTA 3, 4; MFTC 3, 4; Pre-Engineers 1; Grace Collegians 1, 3, 4.



ROBERT RANDOLPH
Little Rock, Iowa



VEDA RASMUSSEN
Sioux City, Iowa

Iowa State Summers of '46 and '47; Morningside Players 4; FTA 4; MFTC 4; Alpha Sigma 3, 4.



MURIEL MUILENBURG
Orange City, Iowa

Agora 2, 3, 4, Soph. Rep. 4; Choir 1, 2, 3; Madrigal Club 2, 4; YWCA 1, 2, 3, 4, Pres. 1, Treas. 3; FTA 4; MFTC 4; Kappa Chi 4; Grace Collegians 2, 4; Cosmopolitan 3, 4; Alpha Sigma 2, 3; Corres. Sec. 3, Program Chairman 4.



HENRY N. MULLER
Lennox, So. Dak.

Papoose Club 3, Serg.-at-Arms 3; Kappa Chi 3, 4.



KATHRYN NELSON
Sioux City, Iowa

Agora 1, 2, 3, 4, Sec. 3; W. 1, 2, 3, 4, Sec. 2, Sports Manager 2; Phys. Ed. Majors Club 3, 4, Pres. 4; Yale-Harvard Game 1, 2, 3; May Queen 3; Student Council 2, 3, 4; Staff 1, 2, 3, Asst. Ed. 3; Ishkoodah; Inter-Sorority Council 4; Kappa Zeta Chi 2, 3, Pres. 4, Soc. Chairman 3; Usher 2; Who's Who 3; Homecoming Queen 4; Student Vice Pres. Junior Rep.



GAYLE C. OBRECHT
Kiron, Iowa

Wyoming U. 1 year; Basketball 1; Phi Sigma 2, 3, 4.



PHYLLIS M. OSBORN
Danbury, Iowa

Basketball 3, 4; WAA 3; Intra-mural Manager 3; YWCA 2; Biology Club 3; Cosmopolitan 3, 4, Editor 4; Alpha Sigma 3, 4.



ALBION P. MCMASTER, JR.
Sioux City, Iowa



LAWRENCE V. MANSFIELD
Sioux City, Iowa
Trinity 2 years; G.I.A. 4.



CHARLES MARRIOTT
Sioux City, Iowa
Trinity 2 years; Biology Club 3; Pre-Engineers 3.



AMY MATTSON
Alta, Iowa
Agora 1, 2, 3, 4; Choir 1, 2; Madrigal Club 3, 4; Mu Phi Epsilon 3, 4, Chaplain 3, 4, Warden 4; Student Council 3, 4, Vice Pres. 4; Ishkoodah 1; YWCA 1; Inter-Sorority 3; Alpha Sigma 2, 3, 4, Treas. 2, Pres. 3; Sioux-Queen Attendant 3.



SENIORS



CHARLES EUGENE SAUTER
Lindstrom, Minn.
FTA 3, 4; Pre-Engineers 1, 2, 3, 4, Vice Pres. 2; G.I.A. 1, 2, 3, 4



ROBERT ROGERS
Sioux City, Iowa



LAVERNE SCHROEDER
Little Rock, Iowa
Basketball 1; Baseball 3



LAWRENCE RUNION
Lake Park, Iowa
YMCA 1, 2, 3, 4; Kappa Chi 2, 3, 4; Pre-Engineers Club 1; Grace Collegians 1, 2; Student Minister 3, 4



DARLYNE SCHWINDERMAN
Macedonia, Iowa
Agora 1, 2, 3, 4; Choir 3; Madrigal Club 1; Band 1, 2, 3, 4; Mu Phi Epsilon 3, 4; Vice Pres. 4, Corres. Sec. 3; Student Council 4; Ishkoodah 1; YWCA 1, 2, Sec. 2; Intra-Sorority Council 4; Alpha Sigma 3, 4, Pres. 4, Vice Pres. 3; Councilor 3, 4



BETTY SARCHET
Algona, Iowa
Ames 1 year; Agora 2, 3, 4; YWCA 2, 3, 4; World Friendship Committee 4; Kappa Chi 2, 3, 4; Grace Collegians 2, 3, 4, Sec.-Treas. 4; Religious Life Committee 3, 4



WILLIAM B. SEIBERT
Sioux City, Iowa
Pomona College 2 yrs.; Staff Managing Ed. 4; FTA 3, 4, Vice Pres. 4; MFTC 4



RUTH HARRIET SAUPE
Sheldon, Iowa
Agora 1, 2, 3, 4, Junior Rep.; WAA 1; Yale-Harvard Game 1; Student Council 2, 3; Collegian Reporter 1, 4; WSGA Vice Pres. 4; Ishkoodah Sec. 1; YWCA 1, 2, 3, 4, Pres. 2, Cabinet 3, Comm. Chairman 4; FTA 3, 4; MFTC 3, 4; Kappa Chi 2, 3, 4, Vice Pres. 3, Pub. Chairman 4; Grace Collegians 1, 2, 3, 4; Inter-Sorority Council Sec. 3; Alpha Sigma 2, 3, Chaplain 2, Treas. 3; Who's Who 3, 4; Pi Sigma Mu 4

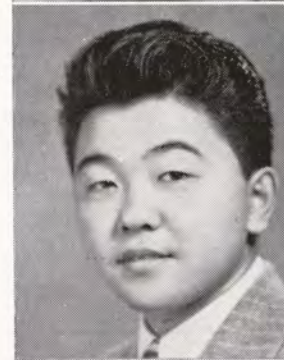


HUBERT SHARP
Sioux City, Iowa
Iowa State 1 year.

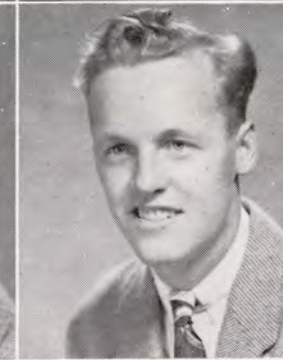
SENIORS

CECILY SHERK
Lake Park, Iowa

Canal Zone Junior College 1 year; Agora 3, 4, Junior Rep.; Yale-Harvard Game 3; Morningside Players 3, 4, Pres. 4, Sec. 3; Student Council Summer '47; WSGA Summer '47; YWCA 3; FTA 3, 4; MFTC 3, 4; Manuscript 3, 4, Vice Pres. 4; Grace Collegians 3, 4; Cosmopolitan 3, 4; Alpha Sigma 3, 4, Vice Pres. 4, Pres. 4; Who's Who 4; Claudia 4; Murder in the Cathedral 3



YOSHINDO SHIBUYA
Los Angeles, Calif.
Basketball 1; Band 1, 2, 3, 4; Cosmopolitan 2, 3, 4



DONALD H. TARRANT
Sioux City, Iowa
Student Council Pres. 4, Summer '47 G.I.A. 3, 4; Who's Who 4; Social Life Committee 4; Intra-mural Athletics 1



DARWIN SNYDER
Sioux City, Iowa
Choir 1, 2, 3, Librarian 1, 2; Sioux City Symphony 2, 3, 4; Band 1, 2, 3, 4, Drum Major 2, 3, 4, Asst. Director 4; Phi Mu Alpha 1, 2, 3, 4, Vice Pres. 3, Pres. 4; Grace Collegians 1, 2; Who's Who 4; YMCA 1, 2; Social Life Committee 4



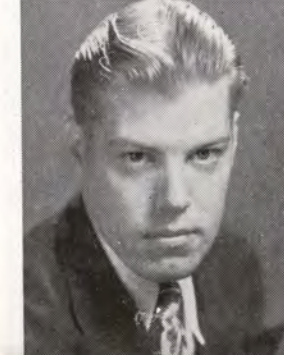
DARLENE TAYLOR
Sioux City, Iowa
Agora 1, 2, 3, 4, Senior Rep. 4; Cheerleader 2, 3, 4; Student Council 4; Sioux Ed. 4; Ishkoodah 1; FTA 4; MFTC 4; Kappa Zeta Chi 2, 3, 4, Treas. 4; Who's Who 4; Pep Club 4; Junior Guard 3; Fredrick Tucker Prize 1



GALE D. STEVENS
Sioux City, Iowa
Basketball 1, 2, 3, 4; M Club 2, 3, 4; Baseball 3, 4; Golf 3; Track 2; Yale Coach 2; FTA 3; MFTC 3; Phi Sigma 2, 3, 4



HAROLD TAYLOR, JR.
Hinton, Iowa
Iowa State 1941-'42; Drury College '43; Alpha Tau Delta 2



RONALD STONE
Sioux City, Iowa



LORRAINE THOMAS
Sergeant Bluff, Iowa
Agora 1, 2, 3, 4; Choir 1, 2, 3, 4; Sioux Staff 1, 2; Collegian Reporter 1, 2; Ishkoodah 1; YWCA 1, 2; FTA 2, 3, 4; MFTC 2, 3, 4

SENIORS

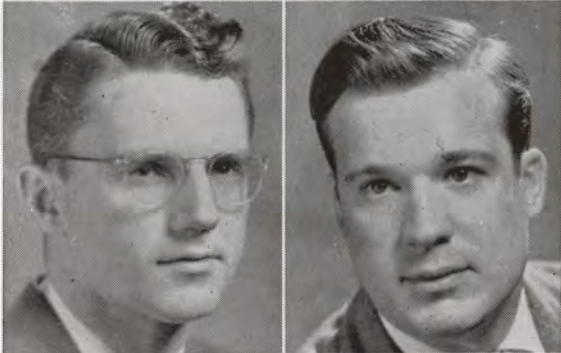
WILLIAM P. TRELOAR
New York, N. Y.

Student Council 3; YMCA 3; FTA 4; GIA 4.



GEORGE L. TRONS RUE
Sioux City, Iowa

Nebraska State Teachers College 1 year.



JOYCE TRONS RUE
Sioux City, Iowa

Agora 1, 2, 3, 4, 1st Vice Pres. 4; Choir 1, 2; Student Council 4, Vice Pres. 4; Ishkoodah 1; FTA 4; Inter-Sorority Council 4; Kappa Zeta Chi 2, 3, 4, Directress 3, Sec. 4, Pres. 4; Junior Guard; Sigma Tau Delta.



HARRIET TROSPER
Sioux City, Iowa

Agora 1, 2, 3, 4; Student Council 3; Ishkoodah 1; YWCA 1, 2, 3, 4; Cosmopolitan 1, 2, 3, 4; Alpha Sigma 4.



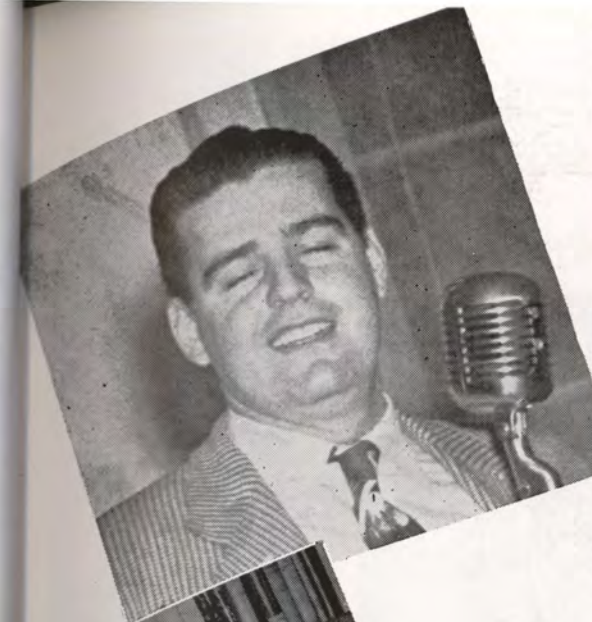
EUGENE A. TROUP
Sioux City, Iowa

Nebraska State Teachers College 1 year; FTA 4; MFTC 4; G.I.A. 3, 4.



FRANCIS B. WADEDO

Sioux City, Iowa
Drake 1 year; Choir 2; G.I.A. 4.



DARREL WARNER
Sioux City, Iowa

Band 1, 2; Sioux Staff 1, 2, 3; Collegian Reporter 2; Alpha Tau Delta 1, 2, 3, 4.



DONALD G. WEAVER
Sioux City, Iowa

Student Council 2, YMCA 1; Pre-Engineers 1, 2, 3, Pres. 1.



RALPH L. WICKSTROM
Sioux City, Iowa

Duke Univ. 2 years; Football 3, 4; M Club 3, 4, Sec.-Treas. 4; Track 3; Phi Sigma 4.



BARBARA WRIGHT
Sioux City, Iowa

Univ. of Mexico 1 yr.; Agora 1, 2, 4, Rreshman Rep.; Student Council 2; Ishkoodah Pres. 1; YWCA 1; Cosmopolitan 1, 2; Kappa Zeta Chi 2, 3, 4, Soc. Chairman and Reporter 2; Phi Sigma Iota 2, 4, Pres. 2; Morningside Players 2.



UPPER CLASSMEN



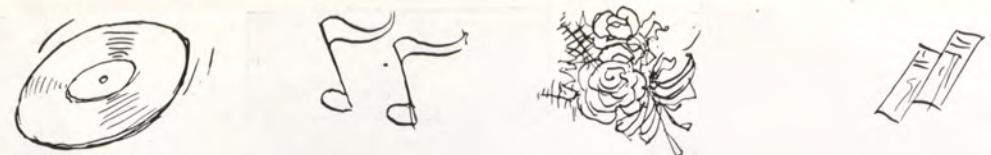
AMEN!
TEACH
Mmmmm!

WHEREAS—

BUDDIES
LOOKY THERE
WE THREE
39

DREAMBOAT

SQUATWELL
CONCENTRATING?
CHESHIRE CAT



STERNE, REHNBLOM

JUNIOR CLASS OFFICERS

Bill Annand *President*
 Max Sterne *Vice President*
 Lyla Rehnblom *Student Council*

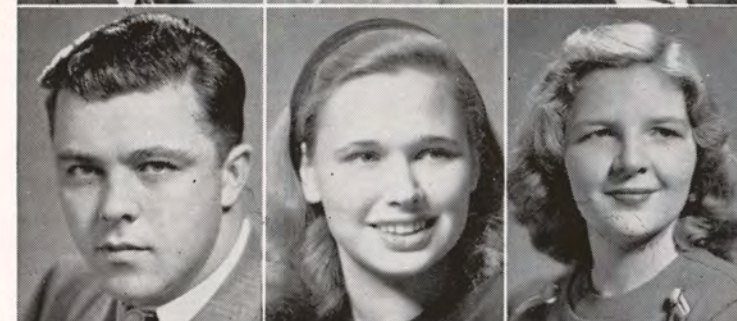


JUNIORS

KENNETH AALSETH
 GEORGIA ANDERSON
 MARTIN APPELT



FRED ASHLEY
 BEVERLY BARKS
 ANN BARRETT



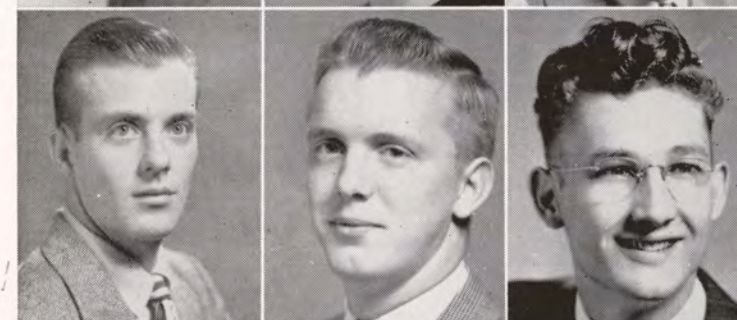
ROBERT BELKNAP
 LOUIS BLECHER
 SHIRLEY BOOZ



ROBERT BOWER
 ELEANOR BRIDENBAUGH
 NEAL BRIDENBAUGH

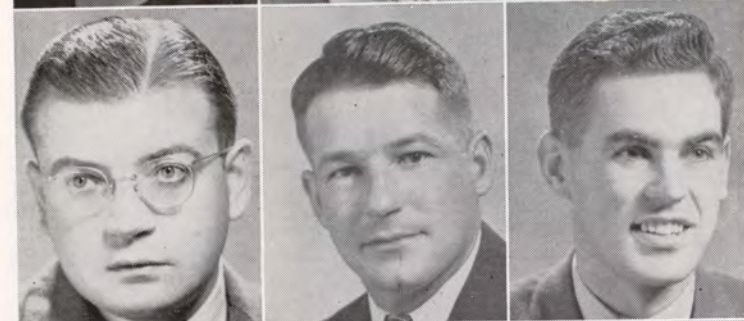


JAMES BRODIE
 CARL CARLSEN
 ROBERT CARLSON



ROBERT COLEMAN
 LORAN COURTNEY
 LYLE COUTURE





JUNIORS

JOHN DEIRUP
EDWARD DONKERSLOOT
MARION DUMELOW

BETTY EBERT
JACK FESSENDEN
JEAN FRONS

HUBERT GERMAN
CLAIR GLESSNER
RAYMOND GUSTAVSON

ROY HAENFLER
REGINALD HALL
HOWARD HARMON

MAUREEN HARTER
VIRGINIA HORST
BEVERLY HORTON

JULES HULTGREN
BETTE JANDT
CHARLES JOHNSON

JUNIORS

KENNETH JONES
WILLIAM KEGELMEYER
DONALD KELSEY

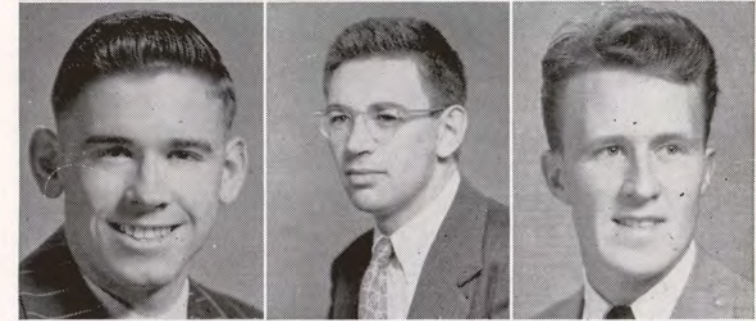
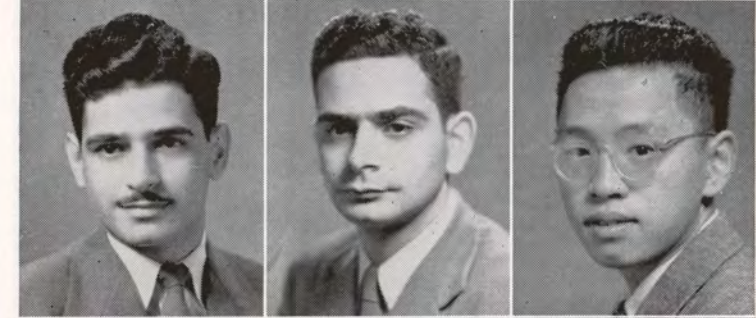
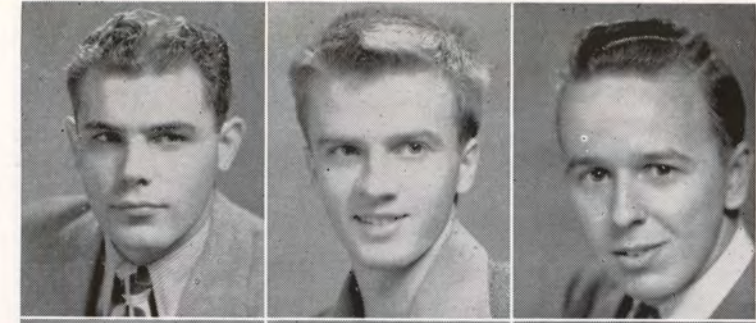
GABRIEL KOURANY
MIGUEL KOURANY
ROBERT LIU

JAMES LUSHER
ROBERT MCCOLLOR
KENNETH MCLAUGHLIN

JAMES McMARTIN
JANICE MACCOLLIN
MILTON MEYER

ROY MOORE
REDA MULLER
CARLETON NAGY

EDWARD NEWMAN
WILLARD OLSON
JOHN PALMOLEA





JUNIORS

BURTON PASSER

JACK PAULIN

RUSSELL PEDERSEN

DWAYNE E. PETERSEN

PHYLLIS ANNE PICKARD

IONE PRESCOTT

WALLACE RAUB

JOAN RAMSEY

EUGENE RASMUSSEN

LYLA REHNBLOM

STANLEY KING

JEANNE SAUTER

BONNIE SCHULTZ

MADelyn SCHWEIZER

LEON SHORTENHAUS

WILLIAM SHUGART

RUBY SMALLEY

ARDEN SMITH

JUNIORS

WALTER SPADE

BYRON SPEAR

FRANK STARR

MYRNA TAKEUCHI

WILLIAM THOMPSON

JOYCE TOWNLEY

DICK TUTTLE

WILTON VAN MEEVEREN

CHLEO WEINS

NILE WILLIAMS

JEAN WILLIAMS

MARY WILLIAMS

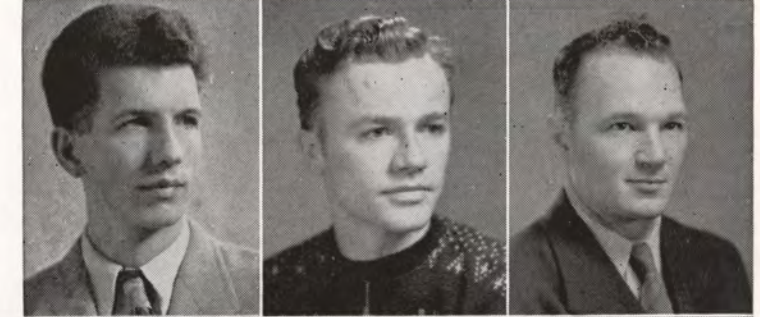
WAYNE WISE

ELDON WOLTMAN

DANIEL YOCUM

ANNALEE ZEMAN

DOROTHY ZIMMERMAN





JAMES, LAMSON, HARRIS, McKEE

SOPHOMORE CLASS OFFICERS

Dale Harris	President
Pat Lamson	Vice President
Don McKee	Secretary
Daryl James	Student Council



SOPHOMORES



EUGENE ALTON

JOE ANDERSON

MORGAN ANDERSON



JAMES ATON

RICHARD ATON

ROBERT BAILEY



GLADYS BALDWIN

HUGH BALE

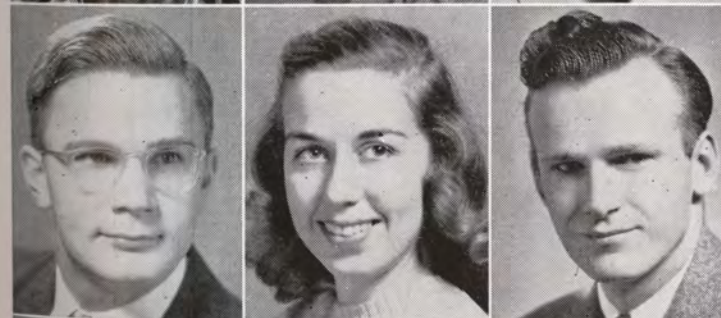
DOROTHY BARTLETT



HELEN ANN BARTRAM

ELIZABETH BECKMANN

BILLY BENNETT



GEORGE BERKSTRESSER

BETTY ELLEN BLACK

JAMES BOUCHIER



WILMA BOZARTH

EDWIN BRANCH

MARY LOU BRAND

SOPHOMORES

BARBARA BREWER

MARY JO BRIGGS

CLAYTON BRISTOW

ALLEN BROWN

GEORGE BRUMBAUGH

WILLIAM BRUNNING

ANNETTE BRUNSON

JOAN BUCKWALTER

ROGER BURGESS

RUBY ANN CEDAR

CHI-CHANG CHEN

MARJORIE CLAPSADDLE

NORMAN CLARK

DOROTHY CLEM

EDWARD COCHRAN

LESLIE CORNWELL

CAROL CORRIE

IRVING CULVER



SOPHOMORES

ROGER DAVIS

VIVIAN DAWSON

VERA DEVAUL

ROGER DICKSON

GRETCHEN DOKKEN

KATHLEEN DOUGHERTY

MARY LEE DOWNS

JAYNE DUBES

DONALD DUNN

JACK DYER

ROBERT ELDREDGE

ELAINE ENGELBRECHT

GERTRUDE EVANS

MARY FIDDICK

DONALD FISCHER

RICHARD FORCE

ANNE FORTNER

LEO FRAMKE



SOPHOMORES

ROBERT FULTON

MAE GALL

MARY GASSER

JAMES GLANN

WARREN GOWER

LUANNE GUSTAFSON

MELVIN HAGBERG

INA MAE HAM

MARILYN HANSEN

EUGENE HASSE

EDWARD HEMENWAY

DALE HEWLETT

MILDRED HOAR

BETTY HOFFMAN

GAYLE JEAN HOFSTAD

HAROLD HOLMES

ROBERT IRWIN

HAROLD IVENER



SOPHOMORES

DARYL JAMES

ELAINE JOHNSON

LOIS JOHNSON

HARRIET JONES

MARJORIE JONES

CHARLES KAHOUN

PATRICIA KEAGLE

MAE KIESSIG

DARLENE KIMMEL

LAVERN KOERWITZ

RICHARD KRAUSE

LOIS KROGH

ROBERT KRUEGER

PAT LAMSON

SANDRA LANG

HENRY LANGSTRAAT

ELSIE MAE LARSEN

JOYCE LELAND



SOPHOMORES

CHARLES LeMASTER

MARY LOUISE LIND

GRACE LIU

DONNA LOWE

THOMAS LOWNDES

MARVIN LUDENS

NORMA McINTOSH

THOMAS McKEOWN

LYLE McKERCHER

ANNE MADISON

EUGENE MARKLAND

DEAN MARSHALL

GLENNA MARTZ

SHIRLEY MENAGE

DUWAYNE MENEELY

HELEN MEREDITH

JOANNE MEREDITH

RALPH MEYER



SOPHOMORES

MARY MILLER

MAYNARD MINNICH

THOMAS MITCHELL

DONALD MOLDEN

WILBUR MOORE

HAROLD MONTGOMERY

VERLYS MOSER

IRWIN MUDDER

LEILA MUELLER

MARJORIE MUGGE

GLORIA NELSON

ROBERT NELSON

STAN NEWMAN

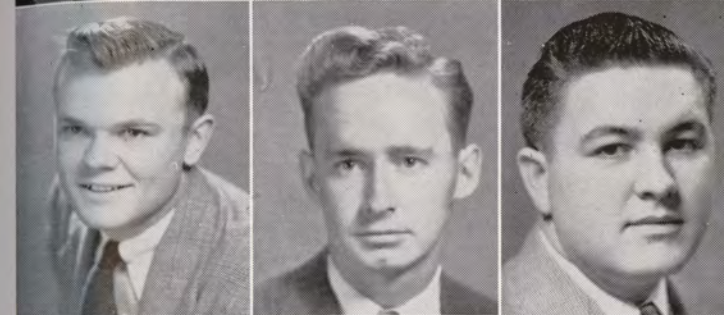
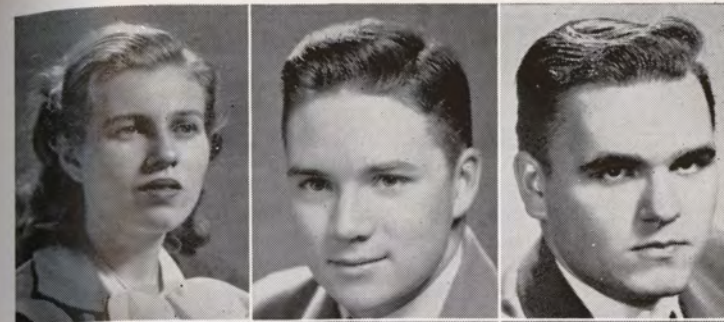
JOAN NOVAK

LOIS OHLSON

ORLENE OLIVER

SHIRLEY OLSON

RUTH PALMER



SOPHOMORES

LORRAINE PATCHEN

CONNIE PENCE

CLARENCE PETERSEN

BEVERLY PETERSON

PAULINE PETTENGILL

DOROTHY PIERCE

ROBERT PLENDL

GERALD PROTEXTOR

ROBERT PROTEXTOR

LUETTA RAVELING

ROBERT REISER

NORINE RIPPEY

DONNA ROBAR

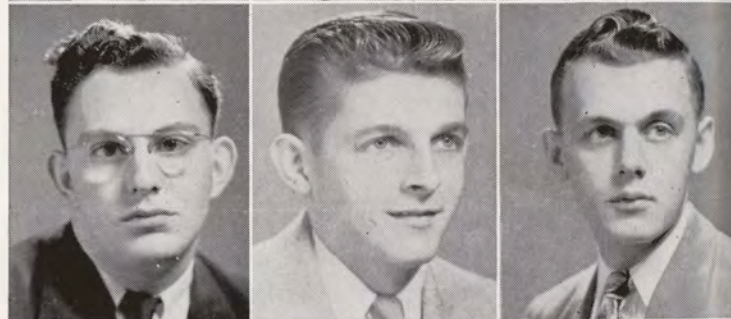
DELORES ROHR

JAMES SADLER

LEWIS SAMSON

JOSEPHINE SANFORD

GERALD SCHIPULL



SOPHOMORES

PATRICIA SCHOFIELD

ALBERT SCOTT

ZELL SCOTT

CHARLES SHARP

EDWARD SOKOLOWSKI

WAYNE SORENSEN

KENNETH STEFFEN

JAMES STEIN

EUGENIA STEWARD

JEROME STUART

DUANE TAYLOR

CHARLES TEEMAN

DEESTAN TURNER

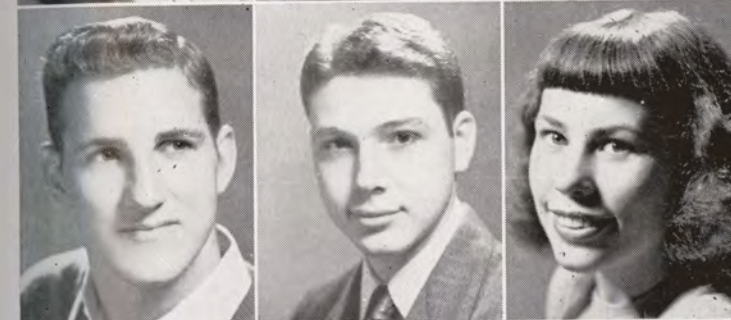
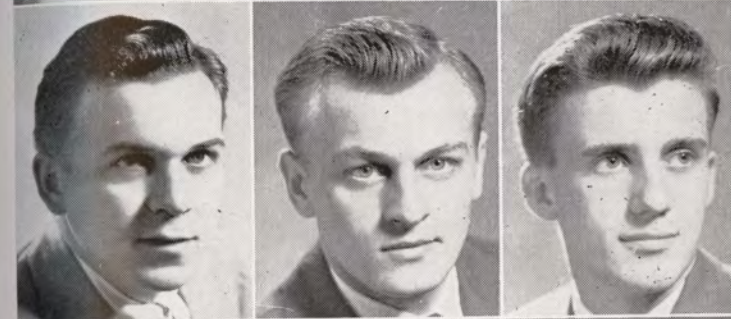
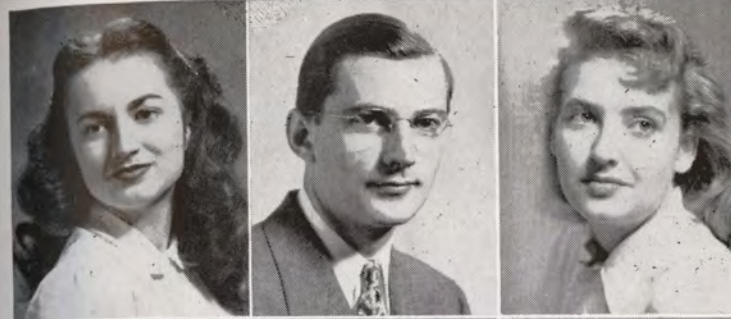
RICHARD ULMAN

WORTHIE USHER

CORNELIUS VANDER BROEK

MARY VANDERWILT

RUTH WAGNER

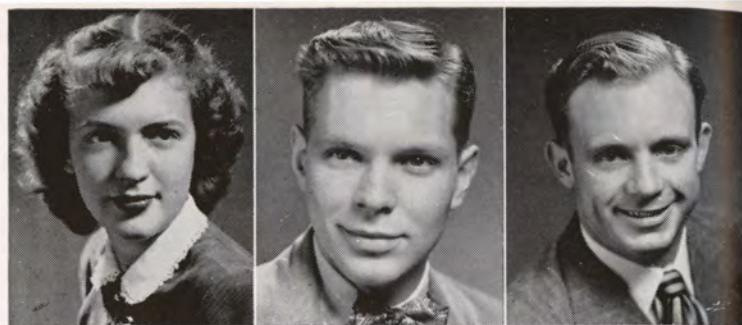


SOPHOMORES

MARJORIE WALTON

THOMAS WARD

DAVID WEISBROD



BEVERLY WELTON

LYN WEST

BETTY WHARTON



MARY PEARL WILEY

JOHN WILLIAMS

JIM WOODS



RUTH WOLFF

ROBERT WRIGHT

JACQUELINE ZEISSLER



UNDER GRADS

LOVE THAT POLE!
BREEZY?

LUCKY ART

HEY, BURGESS
STOPPING TRAFFIC

US

HI LORRY!
THANK YOU, MR. BRISTOW



KINGSBURY, PIPKIN, COX, MILLER

FRESHMEN CLASS OFFICERS

- Roger Cox *President*
- Larry Pipkin *Vice President*
- Doris Kingsbury *Secretary-Treasurer*
- Gwen Miller *Student Council*



FRESHMEN

- GAIL AKESON
- MERRILEE ALBERTSEN
- JOHN ANKERSTJENNE

- RICHARD ASMUS
- NANCY ASMUSSEN
- BRUCE BAKER

- ARNOLD BARON
- PATRICIA BARTON
- DARWIN BLACK



- WILLIAM BLAKESLEY
- JOAN BLASOVICH
- HARRY BORNHOLTZ

- CAROL BREWER
- RICHARD BRINKMAN
- LAURA BUNTEN

- GEORGE BURG
- MURIEL BURGESS
- MARY BURRIGHT

FRESHMEN

VINCENT CLAUSSEN

VIRGINIA COOK

ROBERT CORNELL

ROGER COX

JOAN DAMEROW

DONALD DANNA

DONNA DAVIDS

RICHARD DAVIS

DARRELL DEWITT

FRESHMEN

PHYLLIS GROTE

LOUIS HAITZ

SHIRLEY HANSEN

JANICE HAUPT

CAROLYN HELD

NELDA HENDERSON

DEWALT HILDRETH

CLARICE HOPER

MATTHEW JENKNER

PHYLLIS DUFFY

JAMES EASON

CLETA EVERSON

KENNARD FEARING

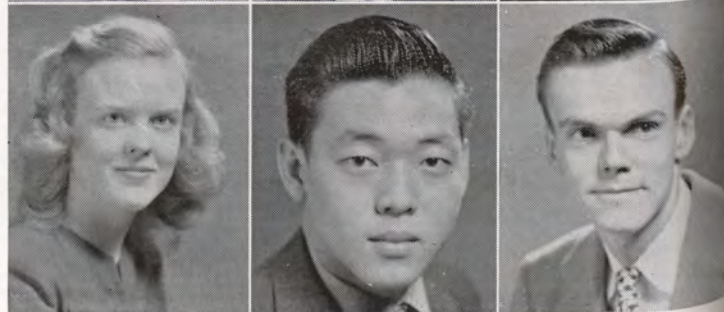
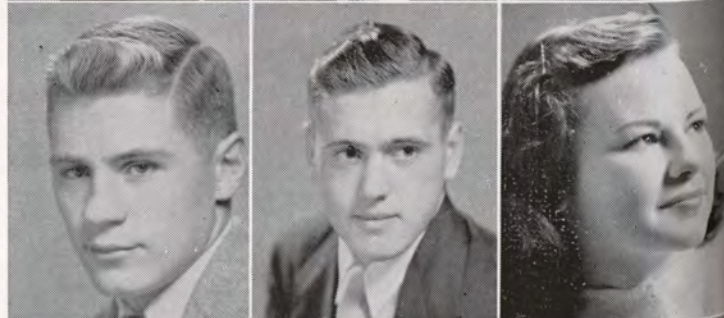
DONALD FORD

CHARLENE FREW

JACKEEN GODSON

ALBERT GOH

RICHARD GRANING



STANLEY JENKNER

DOROTHY JOHNS

GWYNETH JOHNSON

JAMES JOHNSON

JOAN JOHNSON

MABLE JONES

DORIS KINGSBURY

ALBERT KISSINGER

JOYCE KLEMPNAUER

FRESHMEN

KAY KNAPP

FLORENCE KOLP

LAURIE LAKE

LAWRENCE LAYDU

ROBERT LEFLUER

BETTE LAHNUS

DORIS LEIVESTEAD

FLOYD LINDGREN

FRANK LOH

FRESHMEN

GWEN MILLER

JACQUELYN MILLER

PHYLLIS MINDEN

DARRELL MITCHELL

LEROY NAGEL

BEVERLY NICOLIS

RAY OLESEN

MILDRED OTTO

DAVID PALMER

PHYLLIS LAU

DONALD MCCARTHY

ANNE MCDOWELL

LOIS MCGLASHAN

ELIZABETH MCINTYRE

BEVERLY MAJOROWICZ

MARGARET MARKSBURY

JULIAN MERCHUT

ROGER MIGHELL

DONALD PELTON

JACK PETERSON

MARY PETERSON

JOHNNIE POWELL

NELSON PRICE

DAN PROSSER

MARILYN QUISENBERRY

MAURINE RATHJE

NORMAN REID

FRESHMEN

WENDELL RENSINK

ROBERT ROEMER

GEORGE ROLLOS

ARNOLD ROSE

JOAN ROWLES

HAROLD ROWLEY

MARIAN SCHUCHARDT

FRED SHORT

PATRICIA SEVERSON

FRESHMEN

ALLEN TASKER

BARBARA TEAGUE

MARILYN TUDEHOPE

JAMES VAN CAMP

IRMA VANDERVELDE

SUSANNE WEAVILL

SHIRLEY WEBER

EDWARD WEED

SALLIE WILLIAMS

THAINE SHINKLE

KENNETH SILVEY

BONNIE STARK

CHARLENE STEVENS

EDNA LEE STROMBERG

DONALD TAN

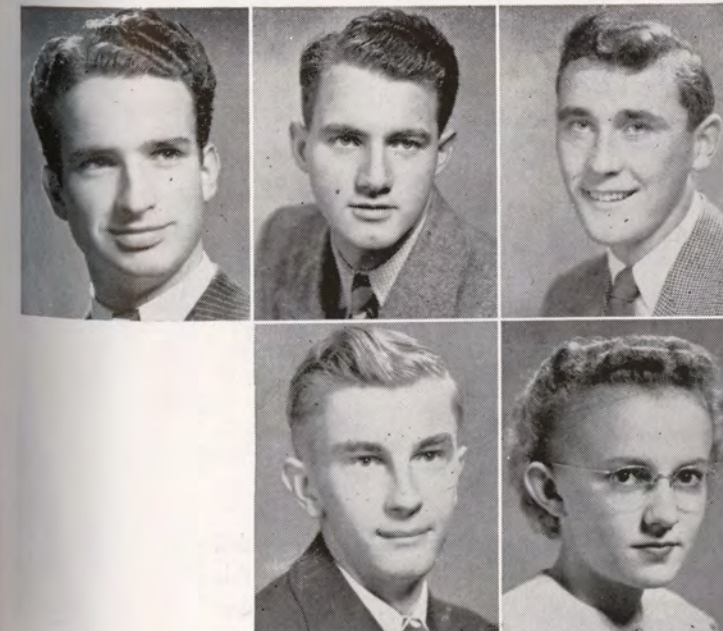
GERALD WITTER

EARL WOODARD

ARLYN YOUNGBERG

WAYNE ZELLMER

IDA ZWALD



SUMMER SCHOOL



Seated: Mrs. Hawthorne, Phyllis Doran, Doris Young, Jean Smith, Mrs. Evelynne Spooner, Ada Suttie.

Standing: Gordon Fairchild, Robert Kiernan, George DeBeer, Duane Faul, Richard McLaughlin, Eugene Stover, James Strait, Sterling Stewart, Laverne Luther, Don Allen.

CLASS OFFICERS

Donald Rhoades *President*

Summer school in 1947 was the largest Morningside had ever seen. In fact, it rivaled pre-war registrations for regular school terms. Many activities were provided for this large enrollment including dances, picnics and the Dorm Garden Party. Closeby recreational facilities for golf, tennis, and swimming offset the hours spent in the hot classrooms. Commencement found twenty-three seniors receiving their degrees.

S T U D E N T



C O U N C I L

Seated: Riebhoff, Bale, Schwinderman.
Standing: Rasmussen, Bremer, Sherk, Stewart.



ATHLETICS



WHOOPS!
INMATES
TOMATOES IN THE
SNOW

NICE VIEW?
LOOK AT THE BIG
CIGAR
ANOTHER HELD
BENCH WARMERS

HMM?
SCENERY
LOADED?
HE-MAN

CAREFUL!
SINKING FAST
COLLAPSE



MEN'S ATHLETICS

FOOTBALL



BASKETBALL



TRACK



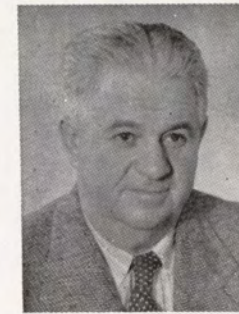
BASEBALL



TENNIS



GOLF



LESLIE DAVIS

*Athletic Director
Head Football Coach
Head Baseball Coach*



ALBERT BUCKINGHAM

*Head Basketball Coach
Tennis and Golf Coach
Football Line Coach*



CHARLES OBYE

*Head Track Coach
Assistant Football Coach
Assistant Basketball Coach*

C
O
A
C
H
I
N
G
S
T
A
F
F



FOOTBALL



HOOKS
All Conference
Most Valuable Player



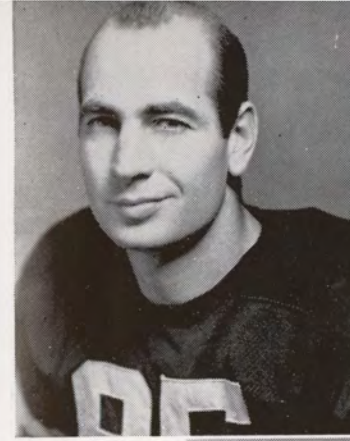
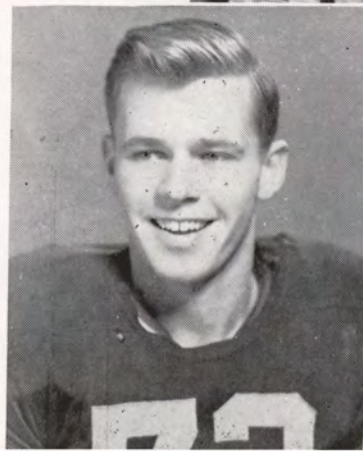
PETERSON
Captain



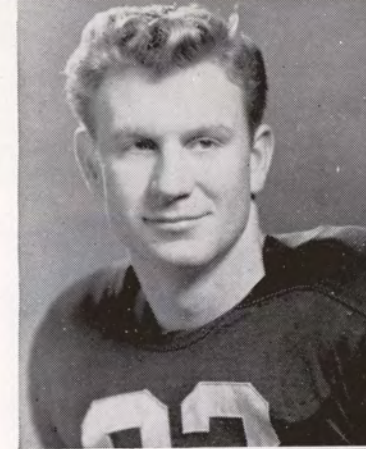
MORNINGSIDE 23
DAKOTA WESLEYAN . . . 7

Some ragged timing, fumbles, and missed blocks characterized the Maroons' initial victory. Bob Hooks was outstanding in his offensive and defensive play.

CALLAHAN
All Conference



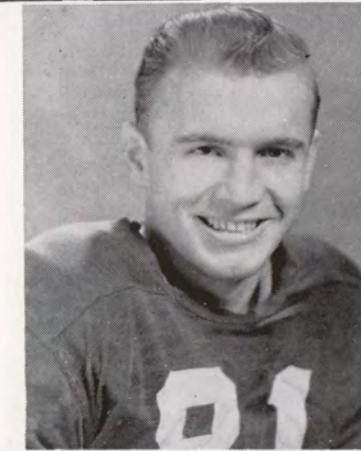
COOME



D. PRESTON

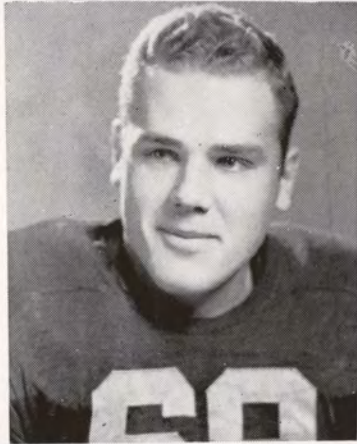
MORNINGSIDE 17
KANSAS WESLEYAN . . . 7

A 102-yard touchdown march featuring Hooks, Callahan, and Preston highlighted Morningside's trouncing of the Wesleyans.



SHORTENHAUS

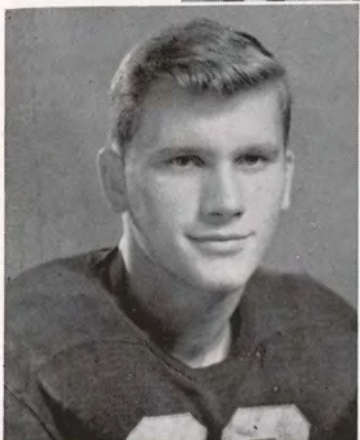




GREGORVICH



HALEY

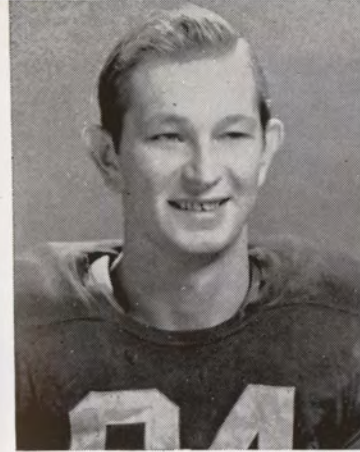


WYNKOOP

MORNINGSIDE 16

OMAHA UNIVERSITY 6

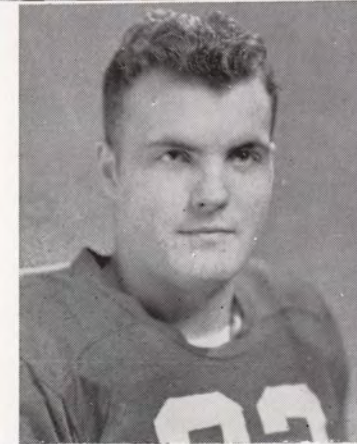
Hooks set a new record for distance in field goals as he booted his third consecutive successful kick. The three were registered from the 39, 37, and 27 yard lines, respectively.



PELELO



GREEN



HARRIS

MORNINGSIDE 7

AUGUSTANA 14

The Maroons suffered their first loss to the Vikings in a rugged, hard fought contest. Shortenhaus and the other starting linemen began to stand out as Iron Men, playing 60 minutes of all games to date.

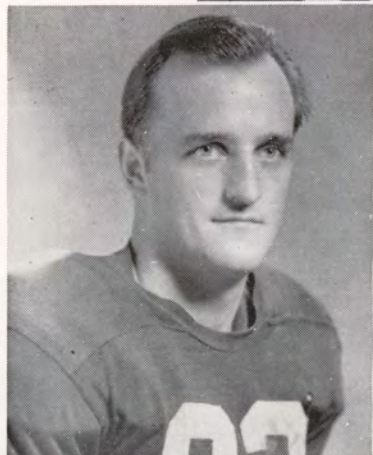




HINTZ



STYCZYNSKI

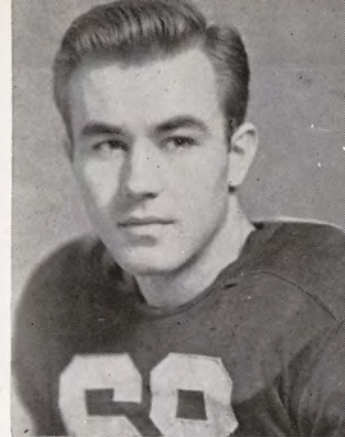


SHELL

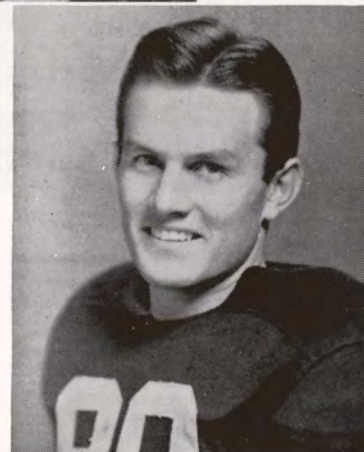


MORNINGSIDE 19
 SOUTH DAKOTA U 21

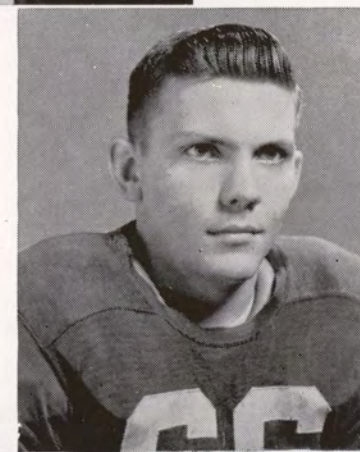
The Coyotes manufactured a victory out of an intercepted pass in the dying minutes of the game to bring home the Dakota Day bacon. Morningside's second conference loss.



WICKSTROM



COLLOPY



WEAVER

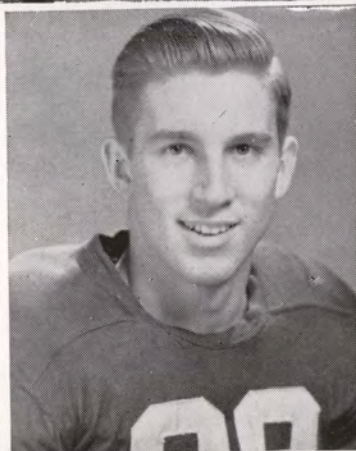
MORNINGSIDE 13
 IOWA STATE TEACHERS . 31

O. R. Latham field looked like a duck pond as Morningside fought another conference game in defeat. Callahan's punting kept the Maroons a constant threat as the Panthers sewed up their homecoming.





FULTON



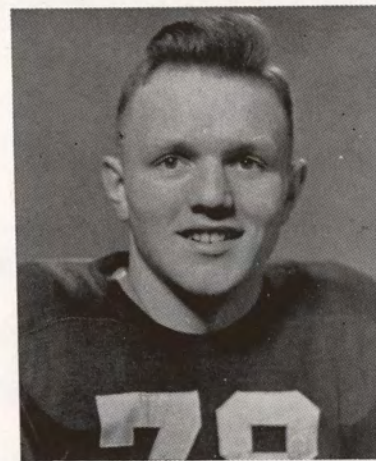
BENHAM



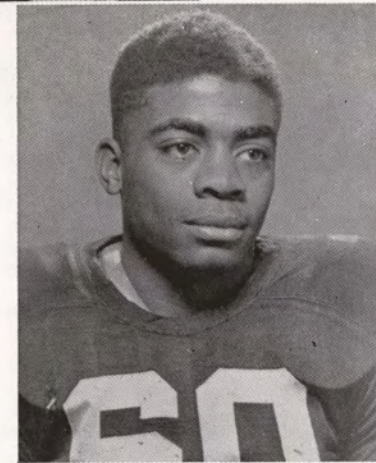
STEPHENS

MORNINGSIDE 15
 MIDLAND 0

The Maroons whitewashed the Warriors here in snapping their three-game losing string. Wickstrom, Wynkoop, and Hooks stymied Midland's offense to sew up the game.



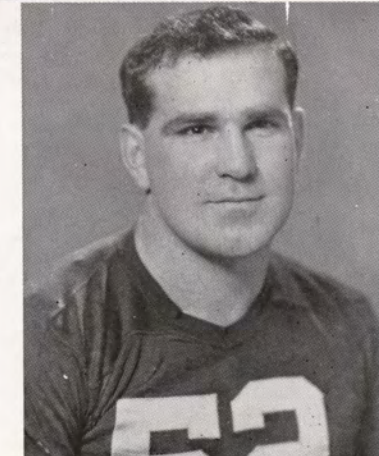
PIPER



DANIELS

MORNINGSIDE 0
 SOUTH DAKOTA STATE . 13

After an even first half, the Jack-rabbits scored in the third and fourth quarters, once on a run, and once on a blocked punt. The fourth conference defeat, this fray ended the season unexpectedly with a .500 season average credited to the Maroon record, since the North Dakota State game was cancelled because of bad weather.



VANNUCCI



HOEFER



1st row: Green, Haley, Piper, Hintz, Styczynski, Vannucci, Feste, Weaver, Thacker, Stickles, Daniels, Fulton.

2nd row: Shortenhaus, Collopy, Gregorvich, Wynkoop, Hoefler, Callahan, Hooks, Pelelo, Haugen, Peterson, Harris, Benham, Witt, Top, Haenfler.

3rd row: Burg, Stevens, Steffen, Gould, Fachman, Merriman, Irwin, Johnson, Burnight, Oleson, Ford, Shell, Gunners, Pickfor, Renfro, Smith.

4th row: D. Preston, Skiles, Baker, Fischer, Meneely, Welsh, Lindenmeyer, Sellon, Dixon, Lindgren, J. Preston, Nielsen, Towler, Crow, Sager, Rollos, Coome.

"B" SQUAD RECORD

Morningside	13	Wayne "B"	0
Morningside	12	South Dakota U. "B"	7
Morningside	37	Northwestern J. C.	0
Morningside	12	South Dakota U. "B"	0
Morningside	12	Wayne "B"	7

NUMERAL WINNERS: Bruce Baker, Ray Burnight, George Burg, Arne Feste, Bud Fisher, Don Ford, Art Gould, Darrell Haugen, Chuck Irwin, Harry Johnson, Floyd Lindgren, Ray Oleson, Joe Preston, Bruce Pickford, Ed Renfro, George Rollos, Avery Stickles, Bob Smith, Ken Sager, Brisbin Skiles, Bill Top, Ted Towler, Henry Witt, Laurence Welch.

1947 FOOTBALL SEASON

Morningside	23	Dakota Wesleyan	7
Morningside	17	Kansas Wesleyan	7
Morningside	16	Omaha	6
Morningside	7	Augustana	14
Morningside	19	South Dakota U.	21
Morningside	13	Iowa State Teachers	31
Morningside	15	Midland	0
Morningside	0	South Dakota State	13
Morningside	---	North Dakota State	---

MAJOR AWARDS

Bob Hooks, Howard Peterson, Charles Callahan, Don Coome, Don Preston, Leon Shortenhaus, Bob Gregorvich, Pat Haley, Forest Wynkoop, Alex Pelelo, Tom Green, Dale Harris, Roger Hintz, Len Styczynski, Andy Shell, Ralph Wickstrom, Bill Collopy, Ralph Weaver, Bob Fulton, Gene Benham, Bob Stephens, Wally Piper, Jim Daniels, Ralph Vannucci, Bob Hoefler.

MAROON VARSITY SQUAD



1st row: Peterson, Gregorvich, Wynkoop, Hoefler, Pelelo, Harris.
 2nd row: Collopy, Piper, Hooks, D. Preston, Coome, Shortenhaus, Green.
 3rd row: Vannucci, Styczynski, Haley, Haenfler, Callahan, Hintz.

CHEERLEADERS

DAR NANCY



PAT

ANNETTE

ART

ROOKIE

MARGE

JOYCE

BUTCH



MAJORETTES



Gayle Jean Hofstad, Maureen Harter, Luanne Gustafson, Phyllis Duffy, Betty Black, Jaucile Long

The six snappy lassies pictured above stepped many a hot mile in front of Morningside's Marching band. They strutted their stuff at five football games and in three parades—the Navy Day, Homecoming, and S. D. U.'s Homecoming. Their swishing skirts and gleaming batons added much to Morningside's spirit this year.

Skinned knees, sore muscles, long underwear, broken straps, new uniforms, rain, snow, embarrassing moments, bus rides, automobile accidents, food after the games and everpresent laughter made an exciting season for the eight cheerleaders. The squad was made up of Ann Barrett, Darlene Taylor, Marge Walton, Pat Lamson, Annette Brunson, Nancy Asmussen, Joyce Townley, Joyce O'Rourke and Art Armbrust as manager.

BASKETBALL

BUENA VISTA

The Maroons dropped their first game of the season on the Beavers' home floor, 46 to 42, as J. Bunnelle dropped 16 points through the hoop. Langstraat and Briggs bore the brunt of the attack for Morningside with 11 markers each.

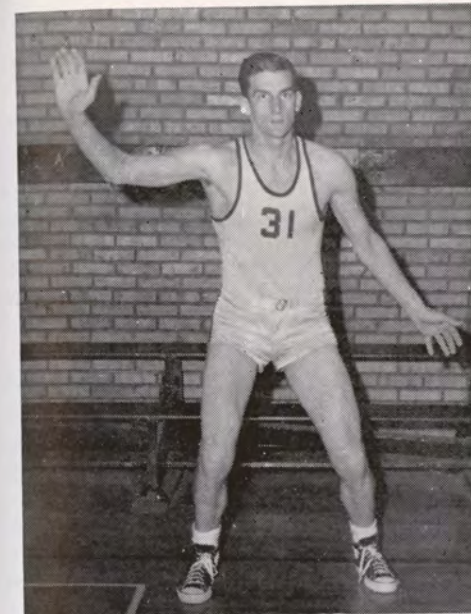
WAYNE STATE TEACHERS

With Johnny Williams sparking the attack in the final quarter for eight big points, the Maroons overcame a five point halftime deficit to squeeze by the Wildcats, 42 to 41. Making 64 per cent of their free throws at the Tutors' net was the scoring advantage that paid off in the end.

BRISTOW
All Conference
Most Valuable Player

WESTERN UNION

In their first home game of the young season the Morningside maples quintet was scalped by the Omaha Indians 49 to 44. Southpaw center Slogr paced the scorers with 14 potent points for the visitors. Langstraat offensively and Briggs defensively were outstanding focal points of interest for Maroon fans.



WEIDENFELD



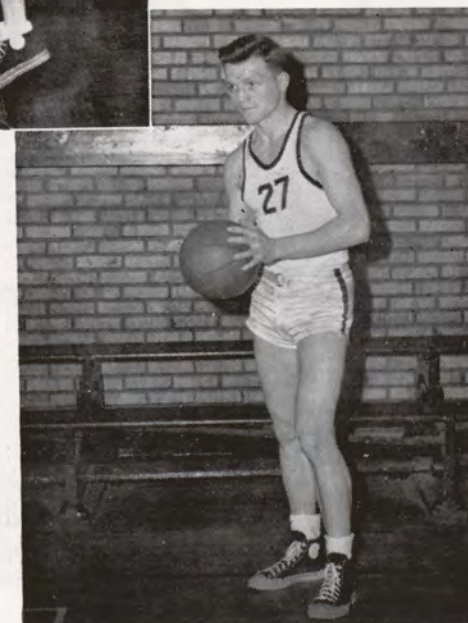
IOWA STATE COLLEGE

68 to 50 was the score as the Maroons fought a hard, tough road, throwing a scare into the Cyclones before bowing in the last quarter to superior opposition. The third game in the space of a week, Morningside's stalwarts, although playing one of their best games, tired somewhat at the end of the tilt.

WESTERN UNION

Morningside smashed to victory over the Golden Eagles 56 to 31 on the Eagles' home court. Held scoreless the entire first quarter, the Western Union five trailed 12 to 0 at the end of the canto. The Maroons won going away as they scored almost at will. Johnny Williams was particularly hot as he blasted in 16 points toward the victory.

PIPER





DOWNING



DUBUQUE UNIVERSITY

Trailing by seven points at intermission, the Maroons tightened their defensive belts in the second half, and by holding the visitors to 13 points in the last twenty minutes sneaked past and posted a thrilling 43 to 42 victory. Points were evenly distributed among the winners with every man scoring at least once from the field.

NORTH DAKOTA UNIVERSITY

Clayton Bristow sank a pair of gratis tosses with only two seconds remaining to enable the Maroons to rack up their third straight win and the second one pointer in Alumni Gymnasium. The scoreboard at the final gun read Maroons 48, Visitors 47, as a result of the rally spearheaded by Bristow and Langstraat who scored 10 and 15 points, respectively.

NORTHERN ILLINOIS STATE TEACHERS

In their first encounter on the Christmas trip into the state of the Illini, Morningside was turned back, 64 to 54, at DeKalb by NIST. Langstraat again led the Maroon onslaught with a big 15 points. Briggs played well defensively, holding the potent Tutor forward, Calacci, to a pair of fielders.

DEPAUL UNIVERSITY

The Maroons met the DePaul five, rated among the top ten teams in the nation, on the Chicagoans' home court December 29, 1947. After leading until the last two minutes of the first half, Morningside fell apart in the second twenty minute period, scoring only one field goal, and allowing DePaul to coast to an 84 to 34 victory.

AUGUSTANA

The Maroons dropped their second conference game of the year to the Vikings of Augustana in the Coliseum at Sioux Falls, 74 to 57. The combination of Haugerjorde and Dobratz proved too much for the Maroon defense. Bristow led all scorers with a 19 point total.

BUENA VISTA

Striking back in revenge, the Maroons evened the series with Buena Vista by trouncing the Beavers 53 to 44. Eagle-eyed forward Henry Langstraat paced the scoring with 16 from the field while his mates divided the baskets evenly among themselves. Langstraat was injured in this game, seriously enough to keep him from action the rest of the season. His loss was strongly felt in the Maroon ranks.

WAYNE STATE TEACHERS

In a return engagement with the Wildcats on the Alumni gym maples, Morningside lost 52 to 47 to even the Wayne series at one each. A big factor in the Maroon loss was the fact that they committed a total of 29 fouls on which the Wildcats scored 16 free throws. Basil Brock and Bob Downing scored an aggregate of 14 points in the last half of the tilt.

NORTH DAKOTA STATE

Breaking a four-game streak of bad luck, the Maroons emerged on top in their third conference game to drop the Dakotans 59 to 47. The visitors from the north managed to tie the count at 27 to 27 at the end of the first half, but long "Dutch" Langstraat's 17 point barrage upset the Dakotans' dope bucket.

IOWA STATE TEACHERS

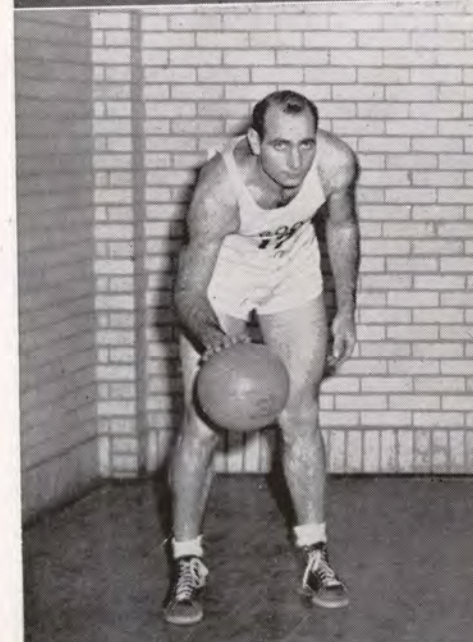
Breaking even in conference game totals with a .500 average, Morningsideers lost to the conference champions from Cedar Falls, 71 to 49. All-conference forward Norm Jespersen, freshman, tallied 18 points to pace the Teachers' attack. Playing in the guard slot, Basil Brock was able to dump in eight points while still tending to his defensive assignments.

WILLIAMS

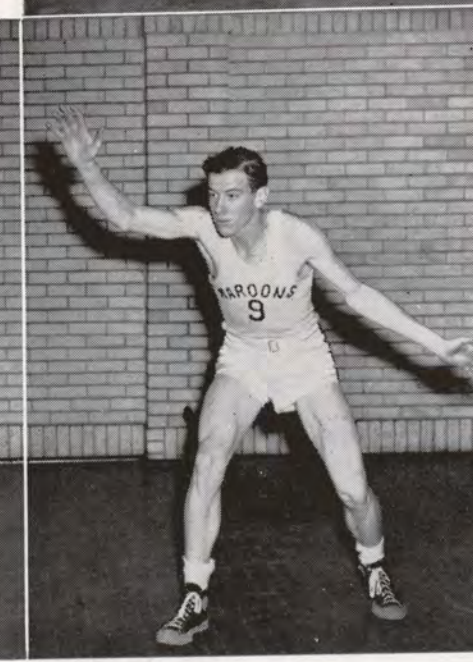
NORRIS

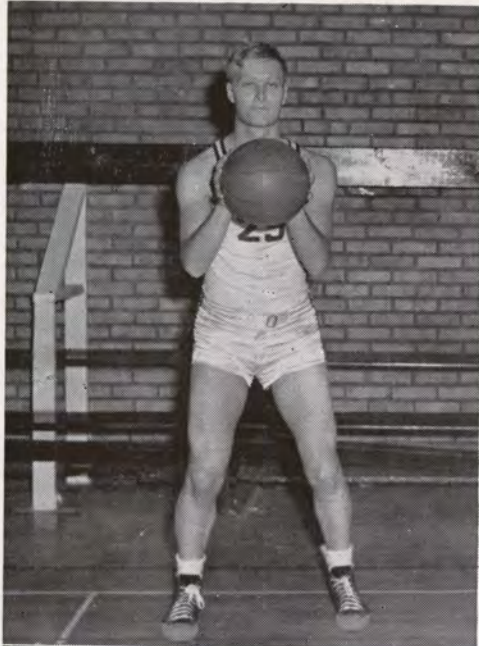


HARMON



COOME





SOUTH DAKOTA UNIVERSITY

"Dief" Diefendorf blistered the nets of South Dakota's home court for seventeen points as the Coyotes defeated Morningside 79 to 52. Big Dick Wieldenfeld joined the Maroon ranks at the center post to bolster their front line. He dunked in 11 points in his first fray. Clayton Bristow managed to rack up 13 markers before he left the game via the foul route.

WANSINK

SOUTH DAKOTA STATE

The Jackrabbits invaded the Maroon home court and snatched a smashing victory, 62 to 49, from the home team. Jones, Mohlenoff and Schmidt bombarded the meshes for 16, 14 and 12, respectively, to lead in the Jackrabbits' scoring column. Schmidt's startling array of unorthodox shots bewildered the Maroons for a time until they solved his style to hold down the score.

SOUTH DAKOTA UNIVERSITY

Wally Piper joined the Maroon varsity squad from the "B" team and proved to be a valuable addition by holding down the vaunted Diefendorf to a total of three free throws in the first half. Despite his defensive work and Bristow's usual performance with 13 points, the Coyotes won the conference tilt by a 60 to 47 score.

BRIGGS



LANGSTRAAT

OMAHA UNIVERSITY

The Indians from Omaha came back from a 21 to 17 halftime deficit to drop the Maroons 44 to 42. Bob Downing arched his favorite shot toward the net several times to tie with Basil Brock for 11 points each. Bristow again led the pack with 14 points from the field.

AUGUSTANA

It was Haugejorde who spelled defeat again for Morningside as he did the previous fall on the gridiron; he poured in 21 counters to lead his teammates and was followed by Robbie Harum, Viking guard, with 16, as they downed the Maroons 55 to 48. The Maroons fought hard to gain the victory, but four of the starters left the game on fouls as they tried desperately to win.

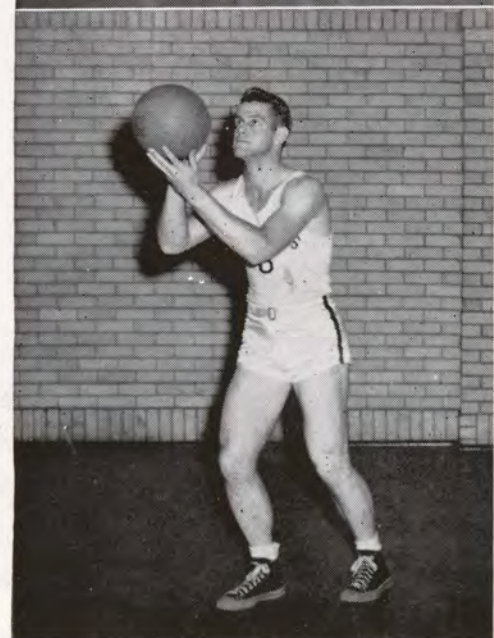
IOWA STATE TEACHERS

In perhaps one of the best games played all season, the Maroons led the Tutors all the way on the Tutors' home court, but lost the tilt 41 to 40 on a last second desperation heave by Norm Jespersen, Teachers' forward. Despite eight bullseyes from the field by "Clayt" Bristow, the Maroons lost in a story book finish that had every fan on his feet.

WESTERN UNION

The Golden Eagles, smarting in defeat, came back smartly to play revenge ball and defeat a waning Maroon team, 45 to 42. Diminutive senior forward Vermeer led the Eagles with 15 points. Guard Johnny Wansink finished his college basketball career with a surge that produced six points and some fine defensive work before he fouled out in the closing seconds of play. This final game gave the Maroons a record of six won and fifteen lost for the season.

BROCK



1947-48 "B" SQUAD RECORD

Morningside	30	Buena Vista "B"	28
Morningside	30	Wayne Teachers "B"	28
Morningside	28	Omaha U. "B"	33
Morningside	48	Western Union "B"	34
Morningside	31	Davenport	32
Morningside	39	Leeds Tavern	31
Morningside	37	Nebraska "B"	58
Morningside	31	Wayne Teachers "B"	30
Morningside	52	Nebraska "B"	33
Morningside	39	Emmetsburg J. C.	40
Morningside	46	N. B. T.	30
Morningside	29	Buena Vista "B"	36
Morningside	45	S. D. U. "B"	36
Morningside	54	Bush Cleaners	31
Morningside	59	S. D. U. "B"	46
Morningside	24	Omaha U. "B"	33
Morningside	48	Western Union "B"	25

NUMERAL WINNERS

BOB BROCK
BILL COLLOPY
BOB FULTON

PAT HAND
WARREN HELD
FOREST McELMURAY

BOB WILLIAMSON
BILL TOP



1947-48 MAROON BASKETBALL SQUAD



1st row: Manager Saltwell, Williams, Williamson, Downing, Brock, Top, Wansink, Harmon.
2nd row: Coach Obye, Langstraat, Briggs, Coome, Bristow, McElmurray, Norris, Coach Buckingham.

1947-48 BASKETBALL SEASON

Morningside	42	Buena Vista	46	Morningside	59	North Dakota State	47
Morningside	42	Wayne State Teachers	41	Morningside	49	Iowa State Teachers	71
Morningside	44	Omaha U.	49	Morningside	53	Buena Vista	44
Morningside	50	Iowa State College	68	Morningside	52	South Dakota U.	79
Morningside	55	Western Union	31	Morningside	49	South Dakota State	62
Morningside	43	Dubuque U.	42	Morningside	47	South Dakota U.	60
Morningside	48	North Dakota U.	47	Morningside	42	Omaha U.	44
Morningside	54	DeKalb	64	Morningside	48	Augustana	55
Morningside	34	DePaul U.	84	Morningside	40	Iowa State Teachers	41
Morningside	57	Augustana	74	Morningside	42	Western Union	45
Morningside	47	Wayne State Teachers	52				

MAJOR AWARDS: Clayton Bristow, Dick Weidenfeld, Wally Piper, Bob Downing, Howard Harmon, Don Coome, Johnny Williams, Bob Norris, John Wansink, Bill Briggs, Henry Langstraat, and Basil Brock.

THE WHIZZES

B
A
S
K
E
T
B
A
L
L

R
U
N
N
E
R
U
P



1st row: Schipull, Hagblade, Sorenson.
2nd row: Ford, Lorenger.

A. T. D.

V
O
L
L
E
Y
B
A
L
L

C
H
A
M
P
S



1st row: Christensen, Williams, Cropley, Schipull.
2nd row: James, Enockson, Norris, Armbrust.

PHI SIGS

V
O
L
L
E
Y
B
A
L
L

R
U
N
N
E
R
U
P



1st row: Newman, Peterson, Wickstrom.
2nd row: Shortenhaus, Styczynski.

TENNIS AND GOLF

Coach Al Buckingham put together one of the best tennis teams in the history of the school for the 1948 season. Playing the number one spot was Lenny Foster, who until the time of printing, had been defeated only twice in college competition.

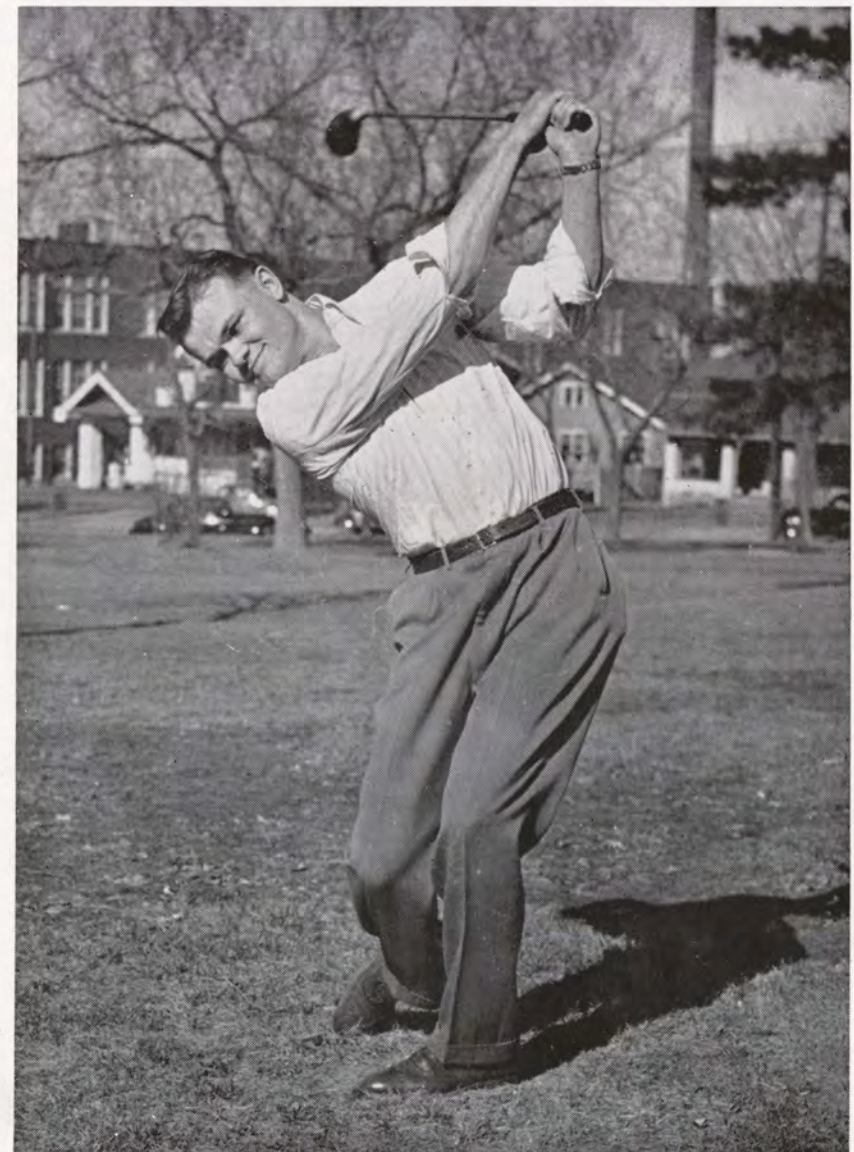
Fred Brown, Scotty Reynolds, and Ray Wallace comprised the rest of the team regulars. Gordon Christenson, Phillip Loh and Don McKee alternated for number five and six positions.

Combining his coaching activities with tennis, Mr. Buckingham developed the golf squad behind the par-blasting work of letter winner Don Molden, who played number one all season. The only returning letter winner, Molden was followed by Dick Morgan, Ward Huevelman and Howard Peterson who alternated for second, third and fourth positions.

Stan Newman, Tony Gregorvich and Ed Tillo were alternates for the starters.

TENNIS AND GOLF
SCHEDULE

- Apr. 13 Omaha U., here
- Apr. 23 Creighton U., there
- Apr. 30 Augustana, here
- May 7 Creighton U., here
- May 11 South Dakota U., here
- May 14 Omaha U., there
- May 15 Conference Meet
- May 21 South Dakota U., there



DON MOLDEN

I
N
T
R
A

M
U
R
A
L

C
H
A
M
P
S

1948 MAROON BASEBALL SQUAD



1st row: Styczynski, Johnson, Harmon, Bob Brock, Custer.
 2nd row: Younger, Sokolowski, Protector, Stickels, Collopy, Siganos, Piper.
 3rd row: Kletschke, James, Basil Brock, Stevens, Enockson, Top.

1948 MAROON BASEBALL SCHEDULE

Friday	Apr. 9—Western Union, here.
Tuesday	Apr. 13—Omaha University, here.
Friday	Apr. 16—Iowa State Teachers, here.
Saturday	Apr. 17—Iowa State Teachers, here.
Friday	Apr. 23—Creighton University, there.
Tuesday	Apr. 27—Buena Vista College, here.
Friday	Apr. 30—Western Union, there.
Tuesday	May 4—South Dakota State, there.
Friday	May 7—Creighton University, here.
Tuesday	May 11—South Dakota University, here.
Friday	May 14—Omaha University, there.
Tuesday	May 18—South Dakota State, here.
Friday	May 21—Iowa State Teachers, there.
Saturday	May 22—Iowa State Teachers, there.
Wednesday	May 26—South Dakota University, there.

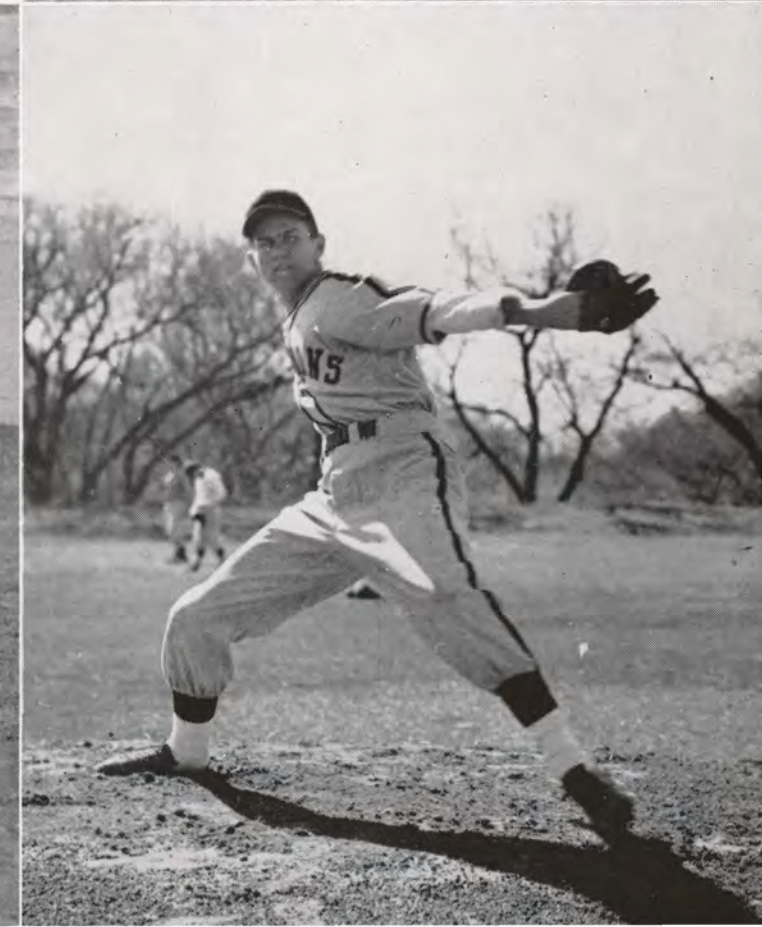
BASEBALL

With a large number of lettermen returning, the 1948 baseball season looks very promising. Karl Kletschke, the find of the year, will share the mound duties with "Rip" Enockson, last year's stellar pitching star. Don Protector will handle most of the duties behind the plate, with "Mighty Mouse" Harmon covering center field and swinging a wicked bat.

HARMON

PROTECTOR

ENOCKSON



1948 MAROON TRACK TEAM



1st row: Mile, Daniels, Pickford, Ford, Blakesley, Hermanson.
2nd row: Pipkin, Nielson, Norris, Witt, Gould.



TRACK

Fielding their first real track team since 1942, the Maroons have a 15-man squad that should make successful representation at each meet scheduled. Norris in the middle distances, Daniels in the sprints, the two-mile team composed of Blakesley, Norris, Keck and Hanson look like strong point winners. Completing the squad are Johnson, Ford, Pipkin, Witt, Weins, Pickfor, Lorenger, Mighell and Umbarger.



1948 TRACK SCHEDULE

- A Apr. 13 Omaha U., Buena Vista & Morning-side Triangular, here.
- A Apr. 16 Corn Palace Relays at Mitchell, S. D.
- A Apr. 23 Sioux City Relays.
- M May 1 Dakota Relays.
- M May 8 Wayne, Morning-side, Creighton Triangular Meet at Omaha.
- M May 15 Conference Meet at Sioux Falls.



WOMEN'S ATHLETICS

MODERN DANCE



HOCKEY



BADMINTON



ARCHERY



TUMBLING



BASKETBALL



SWIMMING



C
O
A
C
H
I
N
G

S
T
A
F
F



FLORENCE COLE
Director of Women's Physical Education
Teacher of Theory Courses



WINNIFRED WEBB
Instructor in Women's Physical Education Classes





1st row: Sherk, Schweizer, Osborn.
 2nd row: Brewer, Smalley.
 3rd row: Zeman, Rohr, Dokken.

Whoever said World Series competition is the toughest in the U. S. has never seen women's intra-murals here. Every organization that has women members is represented in the tournaments organized by the W. A. A. The tourneys include basketball, volleyball, tennis, ping-pong, and badminton. Champs over all were the Alpha Sigma sorority team. Congratulations, girls!

I N T R A
 M U R A L
 C H A M P S



Pappas, Nelson

England had Robin Hood, and we have Katie and Bessie. This year in the archery tournament, Katie Nelson, and Bessie Pappas became our new archery champs. Watch out, each shoots a mean arrow!

M
O
D
E
R
N
D
A
N
C
E



T
U
M
B
L
I
N
G

B
A
D
M
I
N
T
O
N



FIELD HOCKEY



Y A L E

17



Pappas, Brand, Sherk, Jensen, Rohr, C. Brewer, B. Brewer, Dokken, Larsen, Corrie.

H A R V A R D

16

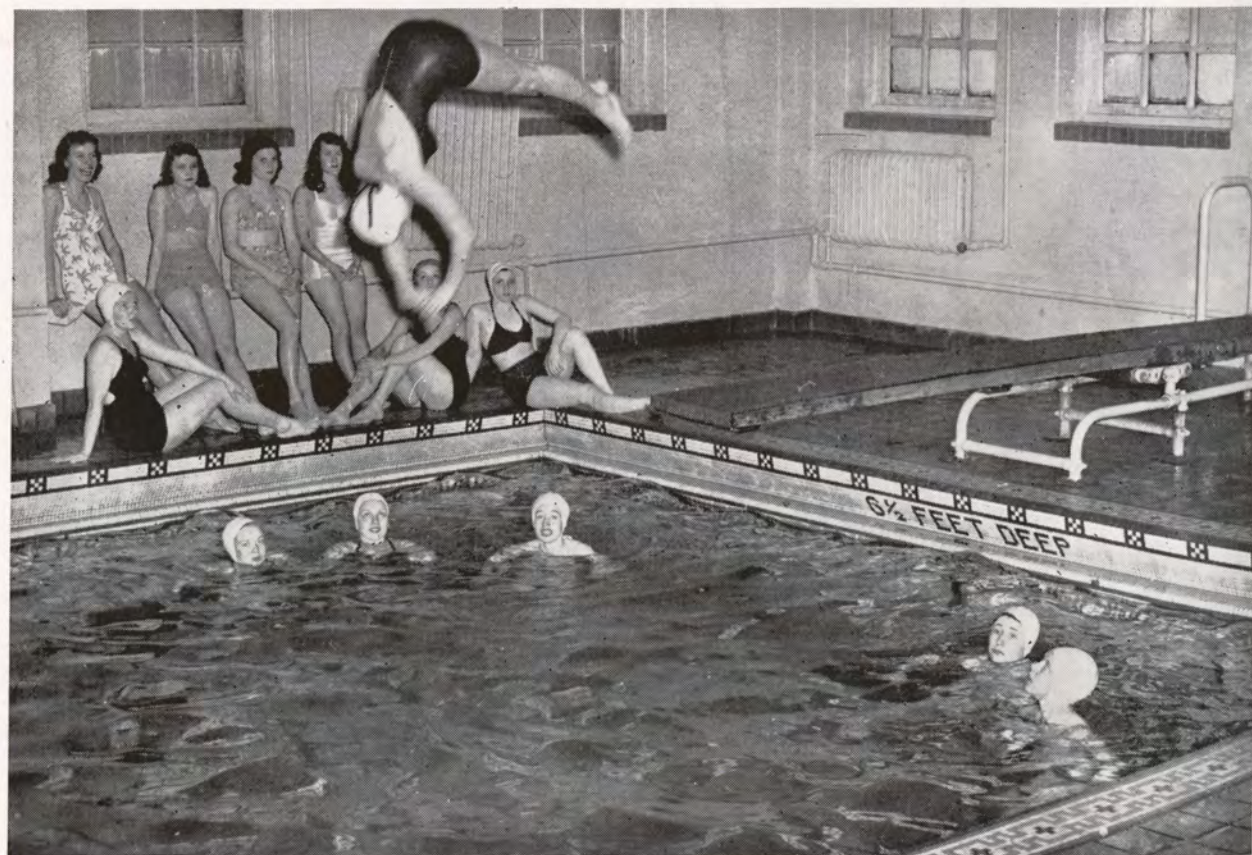


1st row: Rehnblom, Osborne, Zeman, Nelson.
2nd row: Johns, Walker, Rathje.

S
W
I
M
M
I
N
G



1st row: B. Williams, M. Williams, Asmussen, Burgess, Corrie, Godson, Klempnauer.
2nd row: Marksbury, Eddy, Reeves, Sanford, Lamson, Barrett.



FINE ARTS



VESPER CHOIR

Another choir on the campus is the reorganized Vesper Choir under the direction of Mr. Emery Stewart. This choir alternated with the Chapel Choir in singing for the weekly student chapels and joined the Chapel Choir in presenting the "Messiah" and the Bach Festival. This year the Vesper Choir has definitely secured its place among the splendid musical organizations of the college.

Fred Ashley
Gladys Baldwin
Ralph Beedle
Darwin Black
Barbara Brewer
Carol Brewer
Laura Bunten
Lloyd Chadwick
Corinne Chresecas
Marjorie Clapsaddle
Virginia Cook
Frank Curry
Joan Damerow
Charles Held
Alice Dunn
Jack Fowler
Ken Gleason
Phyllis Grote
Robert Graves
Janice Haupt
Carolyn Held
Nelda Henderson
Sally Hennes
Robert Hyde
Robert Irwin

Elaine Johnson
Mable Jones
Bob Kail
Mae Kiessig
Howard Lebowich
Doris Leivestad
Charles Lee
Grace Liu
Marvin Ludens
Lois Johnson
Dorothy Clem
Lorraine Patchen
Amy Mattson
Marrilea Albertson
Beverly Majorowicz
Glenna Martz
Lois McGlashan
Tom McKeown
Marlowe Olson
Ralph Meyerdirk
Dorothy Pierce
Delmar Riessen
Bill Sander
Alan Schatz
Don Silvey

Ed Smith
Harry Smith
Beverly Spielman
Harold Strunk
James VanCamp
Mary Pearl Wiley
Shirley Weber
Wayne Wise
Gerald Witter
Margaret Barks
Mary Lou Lind
Joan Ramsey
Walter Spade
John Dierup
Jack Fowler
Lois Olson
Elaine Englebrecht
Jerry Witter
Worthie Usher
David Palmer
Le Roy Nagel
Joan Rowles
Phyllis Pickard
Verlys Moser
Alice Wilmes



MORNINGSIDE COLLEGE CHOIR

Morningside has always been known for its excellent choirs, and this year the choir surpassed those of previous years. Mr. MacCollin, combining his skill as a director with the excellent student voices, has made this a top choral group. Between semesters, the choir took its first out-of-state tour since 1941, travelling through seven states and singing in such cities as Oklahoma City, Oklahoma; Dallas, Texas, and Little Rock, Arkansas. The annual home concert was presented in the Orpheum Theater soon after the trip.

Morningsiders will not forget the beautiful rendition of the "Messiah" or the newly introduced tradition, the Bach Festival. The chapel and vesper choirs worked together in producing this three-day program. Morningside has certainly received distinction through such finished performances.

OFFICERS

H. Milo Hall, Jr.	President
Darlene Schwinderman	Vice President
Janice MacCollin	Secretary
Robert Bower	Student Manager
H. W. Hartman	Faculty Manager

MEMBERS

Evelyn Hall	Marian Schuchardt	Edith Fiderlick	Leslie Cornwell
Lois McCallum	Robert Bower	Janice Lehmborg	Emery Stewart
Patricia Schofield	David Byers	Betty Wharton	Kenneth Silvey
Velma Redenbaugh	Milo Hall	Clarice Linder	Dean Kauffman
Ruth Palmer	Donald Kelsey	Lorraine Thomas	Don Fischer
Helen Harding	Raymond Wallace	Lorena Reibhoff	George Brumbaugh
Marilyn Hansen	Gail Royer	Beverly Barks	Lyle Couture
Donna Davids	John Reibhoff	Lois Glasco	Don Goodenow
Carol Hatch	Duane Taylor	Clarice Hammerstrom	John Phelps
Janice MacCollin	Bruce Goodenow	Ione Prescott	Robert Nelson
Donna J. Robar	Don McCarthy	Norma Nelson	Jim Linka
Joyce Leland	Harold Rowley	Mildred Otto	Lyle Schossow
Lois Krogh	Marvin Ludens	Florence Kolp	Dave Weisbrod
Pat Foulke	Elizabeth Beckmann	Darlene Schwinderman	
Gladys Allen	Mary Lou Brand	Bob Coleman	

Emery Stewart—Assistant Conductor



CHOIR TRIP



MORNINGSIDE COLLEGE MARCHING BAND

A football game and a parade are not complete without the stirring music of a high-stepping band. Morningside's marching band, under the direction of Bob Lowry and led by drum major, Darwyn Snyder and six pretty majorettes made many colorful appearances at the games and in the Homecoming Parade. A long row of buglers added a final touch of spirit and enthusiasm to the musical organization.

The marching band contained the same personnel as the concert band, in addition to the following, who were in the marching band only.

BUGLERS

Lee Cornwell, Jack Dyer, Kenneth Gleason, Bob Graves, Le Roy Nagel, Bob Nelson.

MAJORETTES

Betty Black, Phyllis Duffy, Luanne Gustafson, Maureen Harter, Gayle Hofstad, Janice Long.

FLAG TWIRLERS

Donna Davids, Lois Glasco, Norma Nelson.

Assistant Conductor—DARWYN SNYDER

MEMBERS

Richard Rasmus
Beverly Barks
Darrel Brodeen
Dave Dillon
Jack Fowler
Alice Kirby
Audrey Laude
Jane Lehmborg

Lois McGloshan
Roger Mighell
Shirley Menage
Maynard Minnick
Pauline Pettingill
Ben Polykoff
Madelyne Schweitzer
Pattie Severson

Arden Smith
Jack Speer
Duane Thayer
Worthie Usher
Tom Ward
Alice Wilmes
Gerald Witter



MORNINGSIDE COLLEGE CONCERT BAND

This year under the able leadership of Dr. Garland, the Concert Band demonstrated the highest qualities of good band music in an extremely diversified repertory. The group presented a concert for the student body, and in the spring made a four-day tour through Northwest Iowa.

FLUTES: Joan Damerow, Doris Leivistad, Ida Belle Zwald, Beverly Spielman.

CLARINETS: Bob Kail, Ralph Beedle, Wayne Sorenson, Dean Marshall, Betty Wharton, Marjorie Clapsaddle, Patricia Schofield, Sally Hennes, Marilyn Gamble, Dave Byers, Sallie Williams.

SAXOPHONES: William Sander, Darwyn Snyder, Jim Linka, Muriel Burgess, Harry Smith.

BASS CLARINET: Don Silvey.

CORNETS: Frank Lieb, Roger Burgess, Richard Force, Gerald Protector, Evelyn Hall, John McMullin.

TRUMPETS: Marvin Ludens, Jack Krusenstjerna.

FRENCH HORNS: Lou McCallum, Elizabeth Beckmann, Edith Fiderlick.

TROMBONES: Wayne Wise, Darrel Warner, Dean Kauffman, Ken Gleason.

BARITONE: Gail Royer.

BASSES: Milo Hall, Ralph Meyerdirk, Bob Nelson.

STRING BASS: Fred Ashley, Les Cornwell.

PERCUSSION: Roger Ditzel, Darlene Schwinderman.

TYMPANI: Donna Davids.

LIBRARIAN: Elizabeth Beckman, Edith Fiderlick, assistant.

STUDENT MANAGER: Les Cornwell.



McCallum, E. Hall, Barks, Beckmann, M. Hall

THE THREE SHARPS AND A FLAT

The "Three Sharps and a Flat" is a group organized this year. They made their debut at the chapel band concert in the spring, singing with Beverly Barks, the soloist; and since then have appeared at several concerts singing favorite modern arrangements. This group is composed of Evelyn Hall, Lois McCallum, Elizabeth Beckmann, and Milo Hall.

MADRIGAL SINGERS

The Morningside Madrigal Singers is a group of eight students picked from the Chapel Choir. They made their first public appearance at the Homecoming Dance, and gave the traditional Christmas musical program at Rotary club. The choir tour gave the popular group further opportunity to show their ability. In the spring, they sang in the high schools of Woodbury County, representing Morningside College. Members of this group are Milo Hall, Lois McCallum, Bob Coleman, Don Goodenow, Ray Wallace, Beverly Barks, Mildred Otto, and Evelyn Hall.

MADRIGAL





CLAUDIA



"ANTIGONE" AND "CLAUDIA"

Greece boasted about her feats in drama, but she didn't have very much over our Morningside Players. Overcoming the handicap of no stage on which to perform, our dramatists presented two fine plays, "Claudia" from the famous Claudia and David stories, and "Antigone," a Greek tragedy. Both plays were presented in "intimate theater" with the audience seated around the actors. "The Players" gave excellent performances.

ON THE CAMPUS

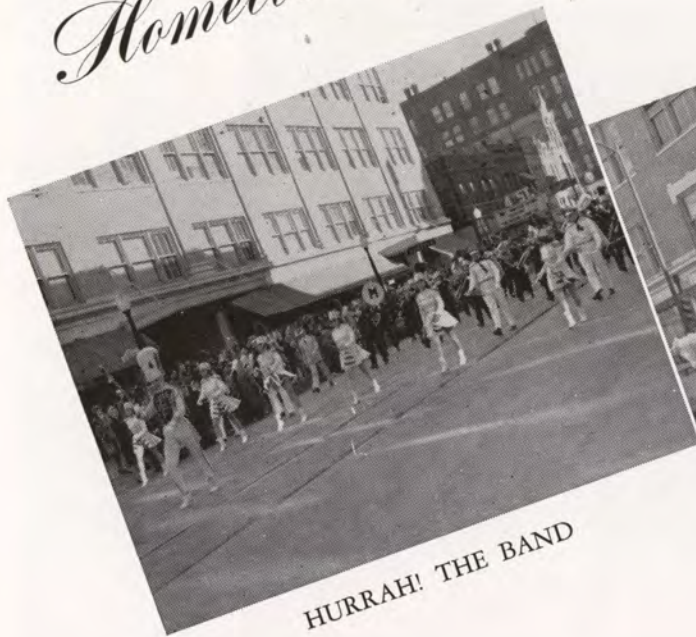


RADIO



I love a Parade

Homecoming



HURRAH! THE BAND



WINNER A. T. D.



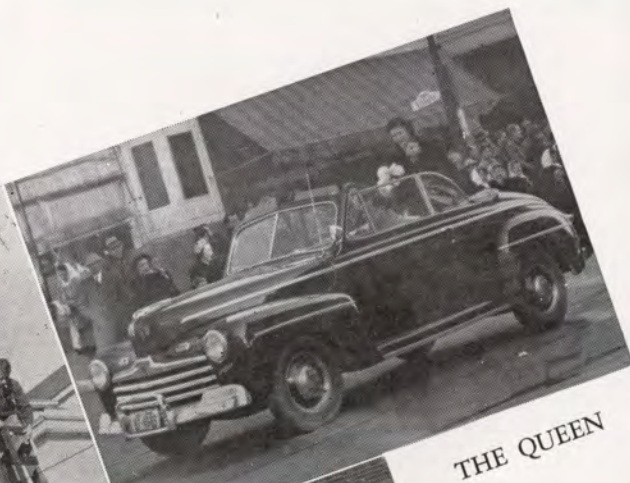
RUNNER UP—MU PHI



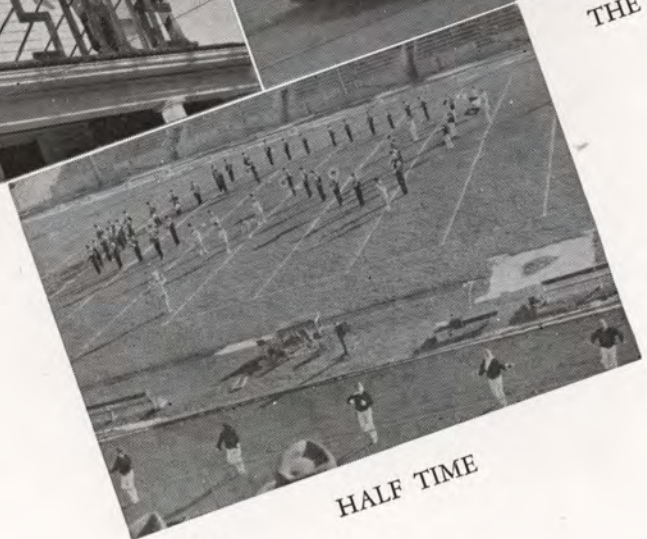
LAST OF THE PRIZE MONEY—W. A. A.



PREPARATIONS



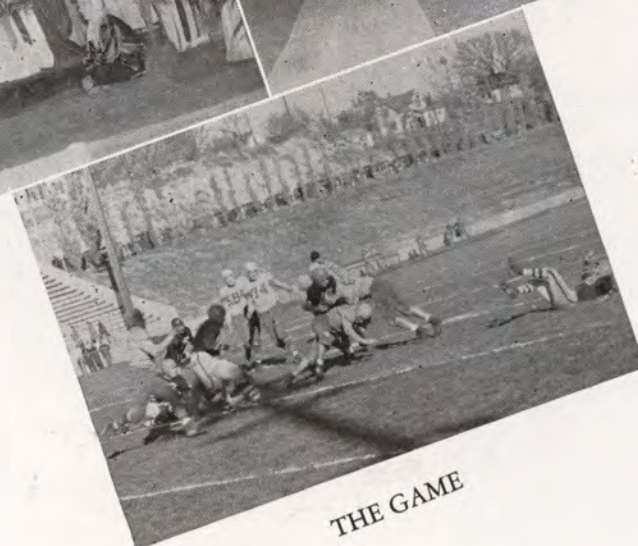
THE QUEEN



HALF TIME



ROYALTY

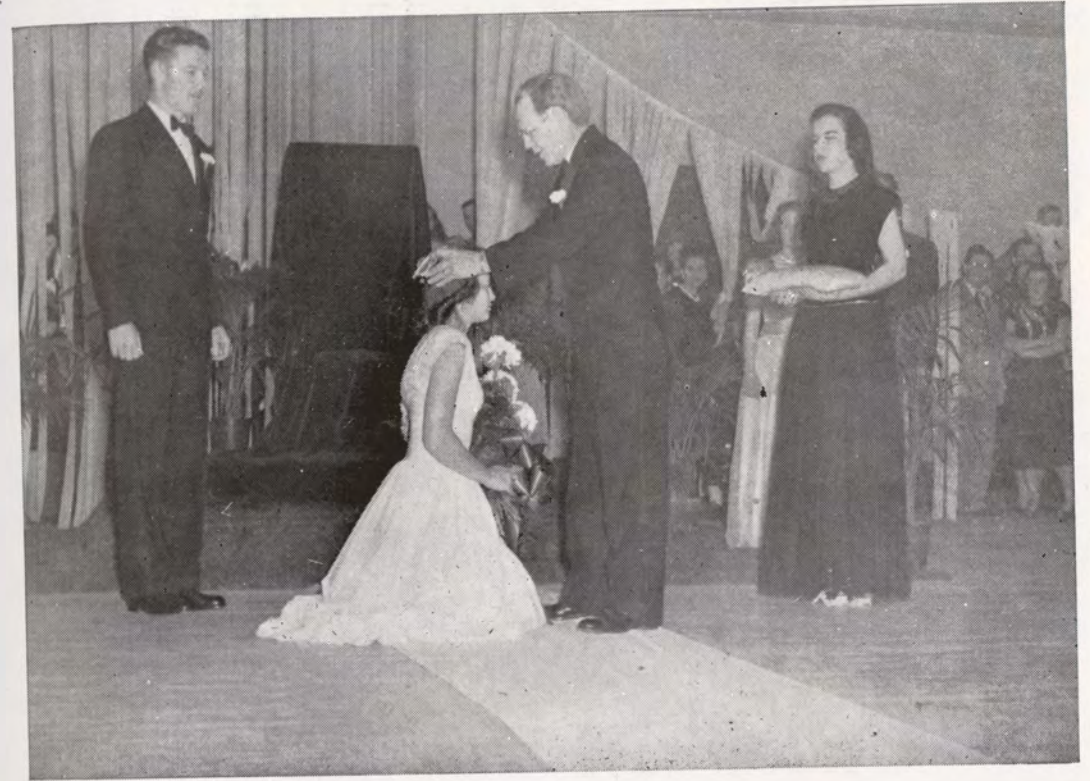


THE GAME

Home Coming



Miss Kathryn Nelson, *Queen*; Mr. Leslie Madsen, *Escort*



I Crown Thee====



Miss Audrey Laude, *Attendant*
Mr. Robert Godfrey, *Escort*



Miss Janyce Lehmborg, *Attendant*
Dr. David Weisbrod, *Escort*



Miss Velma Redenbaugh, *Attendant*
Mr. Dean Moore, *Escort*



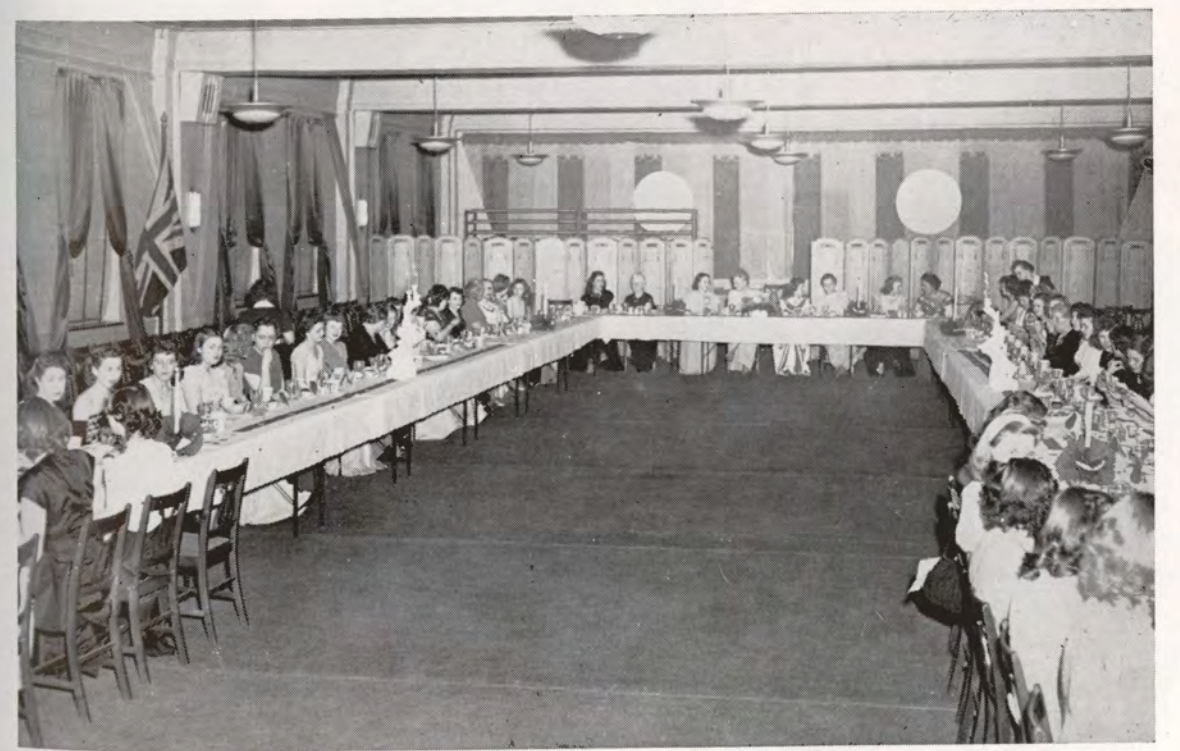
Freshman Sophomore Day



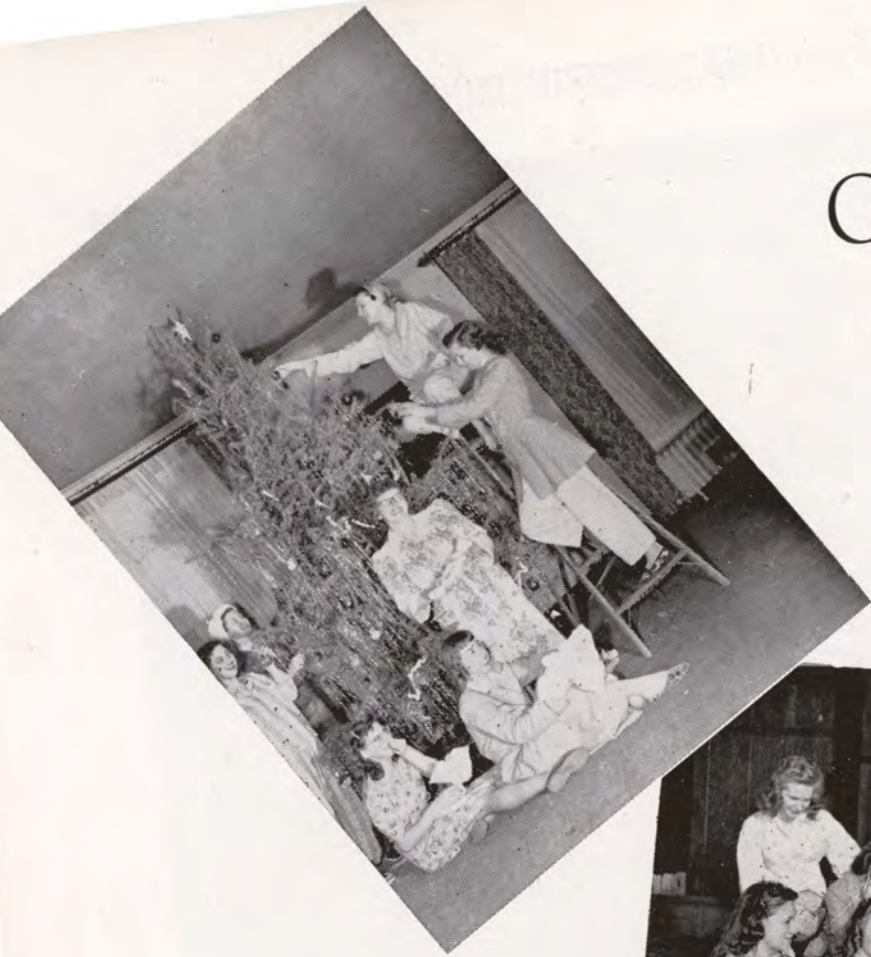
FACULTY RECEPTION



AGORA LEADERSHIP DINNER



DORM CHRISTMAS PARTY







CHARGE!!



TWO GUN GRABER



DUHHHHH

S
A
D
I
E

H
A
W
K
I
N
S

D
A
Y





Worthie Usher, *Li'l Abner*
 Laurie Lake, *Daisy Mae*
 Jayne Soiseth, *Mammy Yokum*
 Clinton Burris, *Pappy Yokum*

BUR-R-R-RRP!



SWING AND SWAY
 THE NOVAK WAY



DAISY
 MAE'S



LI'L
 ABNER'S

THE
 BEARDS





OUR SHIRLEY

"Up and at 'em! That's her motto. The sun's out, there's a lit class and a dance tonight! Shirley (Hash, to the dorm girls) outlines the day with her roommate, Mary Lee. Hope Shorty remembers our date!



After cinnamon rolls as only Hannah, the pastry cook, can make them, Hash gets the mail at the switchboards, meets the "gang." They walk through East Clister, cut across the hockey field to Peters Avenue and puff up the hill. Get out of the way, cars! It's a tradition for dorm girls to walk in the street!



After the first hour class, it's absolutely necessary to visit Schwartz's. The battle for a booth is on, and Shirley and two friends win by a fork-length. You just haven't lived until you've heard "Sabre-Dance" and have a gab-session over a cup of hot coffee! This is the hangout where Morningsiders talk everything from hamburger to Whitehead's Theory.



Two more classes to go! Shirley decides a minute in the sun at the old Spoonholder would be fine. The final pieces of news are hashed over, and Shirley starts to class. She meets Shorty in front of Main Hall. Hope he remembers the date!

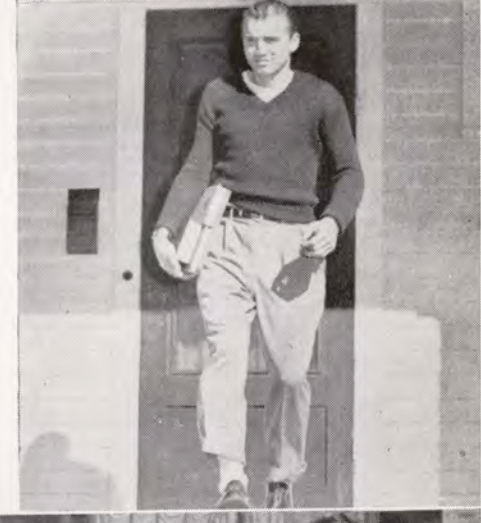
DAY

SHORTY

Pardon the bones creaking! It's just the extra long stretch and yawn this A.M. The clock says just a few minutes 'til Social Ethics. As Shorty gets ready, he remembers the dance tonight. Mm, he'll have to refer this matter to a certain gal, name of Shirley.



Geronime! Down the front steps, three at a time. By this time Prof. Walsh is probably taking roll. Shorty runs across the parking lot between the Con and Main Hall. He'll make it yet. These 7:45 classes!



After that quiz, Shorty is in need of nourishment, but quick! He hustles cut-time over to the Barn for a hamburger. He sees an old pal, Harris, and after talking awhile, they wander off to a fast game of ping-pong. The clock says it's time for class again, and Shorty strolls back toward Main Hall.



It's such a swell day, and there's nothing like the lawn! Shorty goes over for a talk with some of the guys. They are talking Homecoming. Shorty notices Hash walking toward school. He decides to "refer that matter" to her now.



OUR DAY—SHIRLEY AND SHORTY

All slicked up! Shorty approaches the switchboard. "Buzz Shirley Haas for me, please." The place is crowded, North Parlors and Lounge. Just dozens of guys "waiting for their women."

"Hi there, Gal. Neat outfit!" Shorty knows what to say, too! Shirley is pleased that he noticed her New Look. She signs out, waves good-bye to her roommate and they're off for an evening of fun.

Time for a bit of music. Shirley plays a mean piano. What'll it be? "Civilization" or maybe "Nature Boy."

Almost twelve o'clock, and the deadline's near. It was a busy day and fun, too. Need we say more?



—And Then he - - - - -

Dear Diary:

Morningside, here we come with a bright new year ahead! In spite of the usual autumn colors, there was an abundance of green on the campus. The Frosh proved to be a regular bunch and fine athletes on Freshman-Sophomore Day. It was one mighty battle from the girls' hockey field to the Cane Race where Joe Gillum "barely escaped" to the chow line for hot dogs. Naturally, the Sophs were final victors of the day's events.

Homecoming was the biggest all-college event of the year. Everyone was hustling to get those floats ready for the parade. Alpha Tau Delta nosed out first with their battleship, and Mu Phi's snail crawled into second place. The Shrine Auditorium made a lovely setting for the Homecoming Dance and the coronation of Our Queen Katie. We also discovered that President Roadman makes a fetching drum major!

Our Student Council under the direction of President Tarrant began working on a new constitution. In chapel we heard Dr. Donner of Grinnell College, Norman Thomas of the Socialist Party, Mrs. Palche's charming poetry, and Ely Culbertson, who presented his own plan for world government. Mr. Mac and the choir were busy hunting those lost chords in preparation for the southern tour. We can't forget those cups of coffee at Pop Schwartz's either!

Merry Christmas to all! The dorm girls celebrated at the Annual Christmas Dorm Dinner and heard Mrs. Roadman read the traditional Christmas story. Johnny Reiboff was voted the waiter most likely to drop rolls in Dean Tolf's lap. The chapel and vesper choirs combined with the Sioux City Symphony Orchestra to present Handel's "Messiah." We danced to the smooth music of Bob Lowry's Band at the Christmas Formal presented at the Alumni Gymnasium. Then home for two weeks' vacation and sleep—it says here!

Even holidays end, and before we knew it, we were back. A new disease hit the campus, Exam-Fever, accompanied by many a pained expression. "Big Pete" became our new Student Council President. Sho' Nuff! About this time our choir returned from their trip south crammed with tales of beautiful Southern belles and "rest stops." Pat Schofield never quite recovered from the "buffalo" she saw.

Morningsiders went all-out for the World Student Service Fund, contributing some \$700 to foreign student relief. The WSSF auction was a big success due to the exertions of Auctioneers Christiansen and Byers. That twelve dollar cherry pie must have been "out of this world!" Immediately following the drive, Religious Emphasis Week was observed. Dr. Dunnington of Iowa City addressed us, and seminars included "Marriage and the Family" and the "Skeptics' Hour." Martha Graham's Dance Troupe starring Eric Hawkins performed under the sponsorship of the speech and women's physical education departments. The Morningside Players entertained us with two plays "Antigone" and "Claudia," both given in "intimate theater."

With the arrival of spring, sorority rushing began. And about the same time, a young man's fancy (at least here at Morningside) turned to growing a beard. Sadie Hawkins Day was a threat to every male within the city limits. Bass Field suddenly became Skunk Hollow, and we will never forget the softball game between the fat girls and the skinny girls. Dorm girls thoroughly housecleaned for their Dinner-Dance. The theme this year was "Carousel." The gentlemen visitors claim that the only place every girl missed dusting was the tops of the doors.

May brought last activities of the year. One particular day the student left classes to observe Walkout Day festivities on Floyd's Monument. We heard from candidates to student council presidency, Ziegler and Cropley. That evening Donna Reeves was crowned May Queen, attended by Doris Kingsbury and Donna Davids. The seniors were entertained by Dr. and Mrs. Roadman at a breakfast at Scribbin's Tea Room, and Agora sponsored the beautiful Mother-Daughter Banquet at the Mayfair Hotel. The month ended with the Senior Farewell Dance, which was climaxed by the crowning of the Sioux Queen.

Then the last day of May, the stately procession of faculty, the dedication of Jones Science Hall, and the presentation of diplomas to our seniors concluded a year of work and fun for all of us.

That's just about all, Diary. We're looking forward to a summer of relaxation and then another good year in college. 'Bye!

Morningside
As We See It



CELEBRITIES

SIOUX QUEEN



HOMECOMING QUEEN



MAY QUEEN



WHO'S WHO





CARMEN CAVALLERO

Carmen Cavallero, noted pianist and orchestra leader, chose Morningside's 1948 Sioux Queen, an honor open to all girls in school. Photographs were submitted from which Mr. Cavallero made his choice while he was in Sioux City on a personal appearance tour.

MISS BARBARA BRUCE
1948 SIOUX QUEEN



SIOUX QUEEN



MISS ZELL SCOTT



MISS JAYNE DUBES

ATTENDANTS



MISS IONE PRESCOTT



MISS MERRILEE ALBERTSON

HOMECOMING QUEEN ATTENDANTS

MISS VELMA REDENBAUGH



MISS JANYCE LEHMBERG



MISS AUDREY LAUDE



MISS KATHRYN NELSON
HOMECOMING QUEEN



MAY QUEEN ATTENDANTS



MISS DORIS KINGSBURY



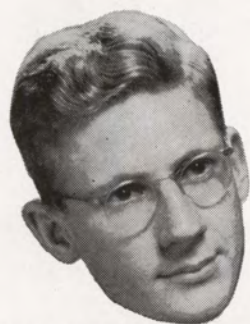
MISS DONNA DAVIDS

MISS DONNA REEVES
MAY QUEEN



WHO'S WHO

This year, fourteen members were added to the Morningside chapter of "Who's Who in American Colleges and Universities." Nominations were made by the Student Council on the basis of service, participation in college affairs, and scholarship. These nominations were approved by the faculty.



WILLIAM BRIGGS



MURIEL BRIGGS



ANN BARRETT



MYRTLE GEAKE



MARVIN LEVICH



KATHRYN NELSON



DARLYNE SCHWINDERMAN



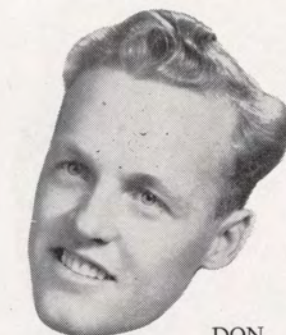
ERNEST LARSON



LOIS McCALLUM



JOHN PATTERSON



DON TARRANT



RUTH SAUPE



CECILY SHERK



DARLENE TAYLOR

ORGANIZATIONS



RUSTIC
EXCUSE ME!
SOMETHING
IN HER HAIR?

ACCIDENTS
WILL HAPPEN
SAY CHEESE
DON'T JUMP
ROMEO, WHERE ART
YOUSE GUYS?

CROWDED?
MORNINGSIDER
CATCH!

ANYONE SEE
A GIRL?
BIG LOAD
EXPECTING
A FLOOD?



OFFICERS—FIRST SEMESTER

Amy Mattson
Don Tarrant
Ann Barrett

Vice President
President
Secretary-Treasurer



1st row: Peterson, Williams, Brown, Schwindermann, Brewer.
2nd row: Harris, Christensen, Annand, Sterne, Taylor, McKee.

STUDENT COUNCIL

The 1947-48 student council is made up of one representative from every organization and class in school. The officers were chosen by student body elections each semester. This year the council sponsored Fresh-Soph Day, Homecoming parade, dance and barbecue, Christmas Ball, Sadie Hawkins Day, Walkout Day, and revised the student council constitution.



Left to right: Haenfler, Harter, Barks, Sherk, Saupe, Laude, Teague, Geake, Weins, Phelps, Weisbrod, Levich, Johnson, Lembcke, Tronsrue, Rehnblom, Larson, James, Kelsey, Ashley, Cropley.

OFFICERS—SECOND SEMESTER

Joyce Tronsrue
Howard Peterson
Lois McCallum

Vice President
President
Secretary-Treasurer





BETA BETA BETA

Beta Beta Beta is a National Recognition Society for Biology Majors. The club provides advance study of the various problems in biology.

Seated: Smalley, Geake.
 Standing: Bruce, Arrendondo, Chatters, Lapsley, Kourany, Dormei, Fairchild, Wilcox.

BIOLOGY CLUB

This year has been one of challenging interest and enjoyment to the Biology Club members. Excellent speakers, movies, reports, and informal discussions have highlighted the meetings. Dr. Chatters, head of the biology department, is the adviser.

1st row: Bruce, Chatters, Geake, Woodard, Arrendondo, Shinkle.
 2nd row: Witt, Fairchild, Osborne, Smalley, Dormei, Teague, Benton, Berkstresser.
 3rd row: Wilcox, Woodrum, Kourany.



PRE-ENGINEERS

The Pre-Engineering Club is an organization of students interested in engineering and science. Meetings are held in the new Science Hall to discuss current scientific developments. Dr. M. E. Graber is the faculty advisor.

OFFICERS

Clarence Peterson *President*
 Ed Weede *Secretary-Treasurer*



Seated: Weede, Weisbrod, C. Peterson, Graber, Winston, Stewart.
 Standing: Peterson, Pederson, Spears, McCollor, Linka, Kissinger, Smith, Phelps.



1st row: Oordt, Muilenberg, F. Loh, Arredondo, Katsumoto, Sherk, Dormei.
 2nd row: Kourany, Osborn, Smalley, Lynch, Dougherty, Trooper.
 3rd row: Takeuchi, Ding, Mrs. Burris, Liu, Cabbell, Barbero, Wright, Wagner.
 4th row: Mr. Burris, Goh, Davies, P. Loh, Wagner, Dr. Roberts, Miller, Bruce, Kourany.

COSMOPOLITAN CLUB

One world—the creation of good will and fellowship among students of all nationalities, creeds, and colors—that is the purpose of this club.

This year Cosmopolitan Club is larger than ever. The nations represented are China, Malaya, Japan, Hawaii, Burma, Holland, Bolivia, Panama, and the United States.

Monthly meetings are held where programs and discussions center around the varieties and differences in customs among the represented countries. Meals are prepared and served appropriate to the featured nation of the meeting.

OFFICERS

Ramon Barbero *President*

F. T. A.

The Morningside Chapter of the Future Teachers of America is an organization for all who are interested in the problems of education in America today. Monthly meetings featured leading educators of this area who expressed their views on the various problems of the educational system as it is today. The group was represented at the fall and spring district conventions and also at the state F. T. A. convention. Social activities of the club included a Christmas party and a picnic in the spring.

OFFICERS

Mary Lou Lembcke *President*
 Bill Seibert *Vice President*
 Marge Jones *Secretary-Treasurer*
 Mr. Russell Eidsmoe *Advisor*



1st row: Corrie, Thomas, Haitz, J. Sauter, Long, Sanford, Raveling, Momsen, Lembcke, Kimmel, M. Briggs, B. Briggs.
 2nd row: Hoper, DeVaul, Lohr, Jones, Taylor, Barrett.
 3rd row: Mugge, Grantham, Franken, Troupe, Bubb, C. Sauter, Isaacson, Eidsmoe, Weins, Langstraat, Ralston, Framke, Seibert.



Seated: Phelps, Graber, Kozan, Abel, Winston, Stewart.
 Standing: Peterson, C. Peterson, Pederson, Raab, McCollor, Bennet, Corwitz.

SIGMA PI SIGMA

This year the Morningside chapter of Sigma Pi Sigma, National Physics Honorary Society, returned to the campus. The organization, composed of physics majors, provides the members with a channel for sharing information in the field of physics and gives everyone the opportunity for discussion of new developments and ideas.

OFFICERS

John Phelps	<i>President</i>
Albina Kozan	<i>Secretary</i>
William Abel	<i>Treasurer</i>

MANUSCRIPT

Manuscript is the organization for student creative writers. Under the guidance of Miss Mills and Miss Mather these young hopefuls compiled the best of their literary efforts in the annual publication, the Manuscript. This year's editor was Cecily Sherk who was assisted by Arthur Madson and Merle Wood. Allen Brown served as chairman of the editorial board.

CONSULTANT BOARD

HUGH BALE	DAVE PALMER
JAMES E. CARTER	ROGER BURGESS
VESTA ANNE FELLER	LORNA WILLIAMS
WILLIAM A. LOGAN	WILLIAM TRELOAR
LITTLETON S. ROBERTS, JR.	



Seated: Mills, Mather, Sherk, Feller.
 Standing: Palmer, Brown, Roberts.
 Not Present for Picture: Carter, Logan, Burgess, Treloar, Madson, Wood, Bale.



1st row: Shonrock, Sherk, Dutton, Booz.
 2nd row: Hofstad, Frew, Teague, Rasmussen, Long, Harter.
 3rd row: Moody, Flowers, Fessenden, Berkstresser, Pickus.

MORNINGSIDE PLAYERS

The Morningside Players, one of the newest organizations on the campus, has become a well-known, ambitious group. This year the players established a program of theater workshop held bimonthly at the Barn. They presented a drama each week over radio station KSCJ and directed the productions themselves. The two main contributions during the year were Rose Franken's play, "Claudia," and a modern version of Sophocle's "Antigone."

OFFICERS

Cecily Sherk	President
Margaret Dutton	Vice President
Shirley Booz	Secretary
Lloyd Schonrock	Treasurer
Maureen Harter	Student Council
Richard L. Flowers	Faculty Advisor



1st row: B. Williams, J. Williams, M. Williams, Black, Asmussen, Barret.
 2nd row: Peterson, Feller, M. Burgess, Kingsbury, Baldwin, Fortner, Jackson, Bodson, McDowell, C. Brewer, Zwald.
 3rd row: R. Burgess, Rasmussen, Davies, Phelps, Charles Held, Remenway, Muller, Schweizer, Johns, B. Brewer, Carolyn Held.

PAPOOSE CLUB

The Papoose Club is composed of students who are sons or daughters of former Morningside College students. This year two of the members are third generation descendents of former Morningsiders.

OFFICERS

Henry Muller	President
Ann Barrett	Vice President
Muriel Burgess	Secretary-Treasurer



Hanson, at piano, McCallum, Schwinderman, Soiseth, Beckmann, Krogh, Brewer, Pierce, Laude, Mattson, Hall.

MU PHI EPSILON

The Phi Zeta Chapter of Mu Phi Epsilon is that group of girls who have been honored in music. This year, they observed Founders Day by presenting a recital. Other activities included a party with their brother fraternity, Phi Mu Alpha, and a band concert by the pledges, on Martin's Corner at 4:30 A. M.

Mu Phi recognizes in its members scholarship, outstanding musicianship, and friendly personalities.

OFFICERS

Lois McCallum	<i>President</i>
Darlyne Schwinderman	<i>Vice President</i>
Audrey Laude	<i>Recording Secretary</i>
Jayne Marie Soiseth	<i>Treasurer</i>
Elizabeth Beckmann	<i>Corresponding Secretary</i>
Lois Krogh	<i>Historian</i>
Amy Mattson	<i>Warden</i>
Evelyn Hall	<i>Chorister</i>
Dorothy Pierce	<i>Chaplain</i>
Barbara Brewer	<i>Alumni Secretary</i>
Marilyn Hanson	<i>Program Chairman</i>
Miss Faith Woodford	<i>Advisor</i>
Miss Lois Grammer	<i>Advisor</i>

PHI MU

The Gamma Xi Chapter of Phi Mu Alpha, Sinfonia of America, is the national music fraternity on the campus. Outstanding among their activities were the joint Phi Mu - Mu Phi formal and their pledge season, during which many promising young musicians were seen creeping about the campus attired in gunny sacks.

OFFICERS

Darwyn Snyder	<i>President</i>
Milo Hall	<i>Vice President</i>
Robert Coleman	<i>Secretary</i>
Fred Ashley	<i>Treasurer</i>
Gail Royer	<i>Historian</i>
Don Goodenow	<i>Sergeant-at-Arms</i>
Robert Bower	<i>Student Council</i>
Prof. Reistrup	<i>Adviser</i>



Lowery, Kelsey, Fowler, Lieh, Wise, Goodenow, Carey, Bowers, Nelson, Cornwell, Brumbaugh, Wallace, Hall, Roger, Spear, Snyder, Ludens, Ashley at piano.



Doug Wagner and Jack Fessenden, feature writers; Hugh Bale, first semester editor; Dave Palmer, first semester exchange editor; Allen Brown, second semester editor.

THE COLLEGIAN REPORTER

The Collegian Reporter, the college newspaper, is published weekly throughout the college year. Hugh Bale, the editor for the first semester, was forced to resign because of his heavy academic schedule, and Allen Brown, the managing editor, took over the office. Outstanding publications of the year were the Bamboozler, the April Fools edition; and the "30" edition which was in the form of a magazine.



Standing: Ed Newman, Cameron Magill, Maurice Jones, Chet Guinn, Don Fischer.
Seated: Jackie Miller, Ruth Saupe.



THE SIOUX

- | | |
|---------------------------------|------------------------|
| Darlene Taylor | Editor |
| Bill Seibert | Managing Editor |
| Ann Barrett | Assistant Editor |
| Vera DeVaul | Assistant Editor |
| Daryl James | Business Manager |
| Laurie Lake | Artist |
| Ken Cox | Photographer |
| Don Etchison | Assistant Photographer |
| Mary Lou Brand | Copy Editor |
| Paul Paulsen | Cover Designer |
| Vic Nielsen | Sports Writer |
| Don Dunn | Sports Writer |
| Ruby Smalley | Sports Writer |
| Lois McCallum | Music Editor |
| Myrtle Geake | Class Editor |
| Willard Olson | Class Editor |
| Jackie Miller | Class Editor |
| Joy Momsen | Class Editor |
| Mr. Albert Buckingham | Advisor |
| Mr. Ray Burks | Advisor |





1st row: Barton, Asmussen, Burgess, Pappas, Barrett, Geake, Briggs, Smalley, Schultz, Black, C. Corrie.
 2nd row: Held, Severson, Nelson, Rehnblom, Dr. Cole, Walker, D. Corrie, Zeman, Osborne.

WOMEN'S ATHLETIC ASSOCIATION

That group of athletically inclined, peppy co-eds on the campus is the Women's Athletic Association which controls the college women's sports program, and sponsors tournaments and the annual Yale-Harvard basketball game. In order to win membership, the girl must earn 150 points through an intramural program of athletics including archery, tennis, softball, basketball, badminton, and table tennis.

The highest award which W. A. A. confers upon a member is the white sweater with the maroon letter "M" thereon. This award is the symbol of good sportsmanship, scholarship, and leadership.

Muriel Briggs	<i>President, 1st sem.</i>
Doris Corrie	<i>President, 2nd sem.</i>
Ann Barrett	<i>Vice President</i>
Bessie Pappas	<i>Secretary</i>
Lyla Rehnblom	<i>Treasurer</i>
Dr. Florence Cole	<i>Advisor</i>

P. E. MAJORS CLUB

The Physical Education Majors' Club in collaboration with the speech department sponsored one of the finest programs of the year, the Martha Graham dance troupe, starring Eric Hawkins. In addition the members sponsored a girls basketball clinic for Sioux City and surrounding towns, and a Physical Education Majors - Dance. The most impressive meeting for the club was the presentation of the Majors' sweaters and letters.

OFFICERS

Kathryn Nelson	<i>President</i>
Ann Barrett	<i>Vice President</i>
Bessie Pappas	<i>Secretary</i>
Dr. Florence Cole	<i>Advisor</i>

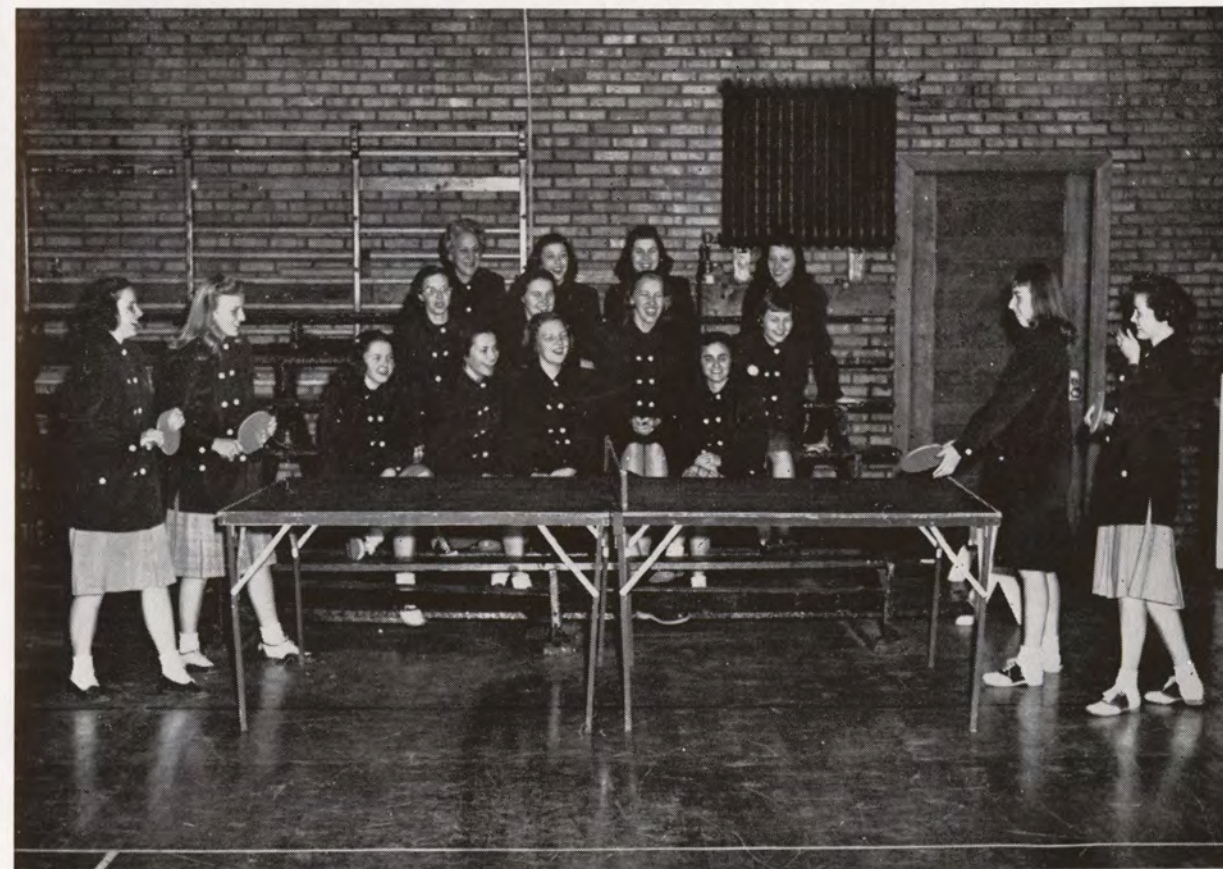


Table: C. Corrie, Walker, Black, Bartrom.
 1st row: Rehnblom, Nelson, Barrett, Pappas.
 2nd row: Burgess, Geake, Schultz, Barton.
 3rd row: Cole, Asmussen, Briggs, D. Corrie.



Seated: Patterson, Tweitto, Baron, Protector, Mills, Burks, Govedare, Johnson, Wright, Brodie, Dutton.
 Standing: Brown, Bale, Balkema, Phelps.

SIGMA TAU DELTA

Sigma Tau Delta, national honorary English fraternity, has been represented actively on the campus this year. Members of the Gamma Beta chapter have met monthly to discuss literature, contemporary and classical, and other aspects of the field of English. Membership is based both upon scholastic ability and upon English credits.

OFFICERS

John Patterson	<i>President</i>
John Balkema	<i>Vice President</i>
Hugh Bale	<i>Secretary-Treasurer</i>

PI GAMMA MU

Iowa Delta Chapter of Pi Gamma Mu, National Honorary Social Science Fraternity, has taken an active part in campus life during the past year. To qualify for membership, students are required to have a grade point average of at least 3.0 and to have completed twenty hours of social science studies with honor grades. Courses included in consideration for membership are history, sociology, government, economics and related subjects.

OFFICERS

John Patterson	<i>President</i>
Richard Loffswold	<i>Vice President</i>
Dr. T. E. Tweitto	<i>Secretary-Treasurer</i>
Dr. R. N. Miller	<i>Sponsor</i>



1st row: Miller, Loffswold.
 2nd row: Bale, Dr. Saunders, Patterson, Larson.
 3rd row: Franken, Foster, Saupe.
 4th row: Dr. Miller, Mr. Bowman, Dr. Tweitto, Miss McNee



Seated: Tronsrue, Geake, Schultz, Briggs.
 Standing: Johnson, Taylor, Sherk, McCallum, Novak.

AGORA

Agora, the organization for all women on the campus, had another active year under the guiding hand of its president, Myrtle Geake. Agora-sponsored events include the Big-Little Sister Tea held at the dorm, the Leadership Banquet with Mrs. Freeze, editorial writer of the Journal publications, speaking to the guests and girls, the king and queen reigning over the Agora carnival, and the traditional Mother and Daughter Banquet.

OFFICERS

Myrtle Geake	<i>President</i>
Joyce Tronsrue	<i>First Vice President</i>
Lou McCallum	<i>Second Vice President</i>
Bonnie Schultz	<i>Secretary</i>
Mary Jo Briggs	<i>Treasurer</i>
Darlene Taylor	<i>Senior Representative</i>
Cecily Sherk	<i>Junior Representative</i>
Joan Novak	<i>Sophomore Representative</i>
Joan Johnson	<i>Freshman Representative</i>

ISHKOODAH

Ishkoodah is a club for Freshman girls only. The primary purpose of the group is to get acquainted and to create friendship and understanding among Freshman girls.

This year Ishkoodah had bi-monthly meetings at Dimmitt Hall, sponsored teas, heard addresses by Miss Lloyd, Miss Mathers, and Miss McNee, of the college, and participated in the Agora carnival and women's intramural tournaments.

OFFICERS

	First Semester	Second Semester
<i>President</i>	Gayle Jean Hofstad	Nancy Asmussen
<i>Vice President</i>	Kay Knapp	Phyllis Grote
<i>Secretary</i>	Shirley Weber	Cleta Everson
<i>Treasurer</i>	Elizabeth McIntyre	Marian Schuchardt



1st row: Brewer, Lau, Johnson, Zwald, Hofstad, Weber, Knapp, Cook, Leiverstad, Grote, Severson.
 2nd row: Stevens, Will, Rowles, Jensen, Burgess, Held, Damerow, Johns, Johnson, Rathje.
 3rd row: Kolp, Hoper, Akeson, Hinrichs, Schuchardt, Hatch, Kirby, Albertsen, Stark.



G. I. A.

The Gamma Iota Alpha is familiarly known as the vets fraternity—an organization originally formed to accommodate the mutual interests of honorably discharged veterans. Formerly the G. I. A. was organized on a "Club" basis. This year the constitution was revised and fraternity policies were formulated.

In conjunction with the fraternity policies GIA joined hands with the Alpha Sigma Sorority and affiliated as a brother and sister organization.

OFFICERS

	First Semester	Second Semester
<i>President</i>	Milton Meyer	Richard Loffswold
<i>Vice President</i>	DeEston Turner	James Zeigler
<i>Secretary</i>	Tom Grindberg	Tom Grindberg
<i>Treasurer</i>	Bob Protector	Wayne Risk
<i>Sergeant-at-Arms</i>	Charles Teeman	Willard Olson
<i>Executive Committee</i>	Dick Loffswold	Hugh Bale
	James Zeigler	Ray Hall
	Ed VanVeldhuizer	Byron Spears

G. I. A. MEMBERS

SENIORS: Thomas K. Grindberg, Richard A. Lechner, Larry Mansfield, Howard Peterson, Donald Tarrant, Edward VanVeldhuizen.

JUNIORS: Loran Courtney, Lloyd Chadwick, Leland K. Evans, Ray Gustavson, Ken Jones, Stanley D. Lamfers, Richard D. Loffswold, Victor R. McCaslen, Robert McCollor, Milton O. Meyer, Willard A. Olson, Dwayne A. Petersen, Nile Weins, Harold Holmes.

SOPHOMORES: Morgan Anderson, Hugh Bale, Alan E. Bebee, Robert H. Kelknap, Tom Bornholtz, Frank W. Bruning, Donald L. Carter, Norman Clark, Robert C. Cornell, Keith Erps, Raymond Hall, Duane Hansen, Harold Henrickson, Jules M. Hultgren, Maurice E. Jones, Jack D. Krusenstjerna, Thomas Lown-

des, Cameron J. Magill, Rayfield Meyer, Victor Nielsen, Jr., Robert D. Protector, Robert J. Reiser, Wayne Risk, Edward J. Sokolowski, Byron Spear, Jr., Raymond H. Speulda, Ronald Stonebrook, Jerome P. Stuart, Gerald Tarrant, Charles Teeman, William A. Thompson, Richard Tollefson, DeEston Turner, Richard Wagstaff, David P. Weisbrod, James Winter, James Ziegler, Robert McAmis.

FRESHMEN: Robert D. Brock, Matthew S. Jenkner, Stanley J. Jenkner, Albert Kissinger, Roy G. Kuta, Gill Meyer, Gordon O'Harrow, Norman Reid, Robert W. Roemer, Stanley Schipull.

UNCLASSIFIED: Wayne Will.



G
I
A



McKEE

PHI

PETERSON

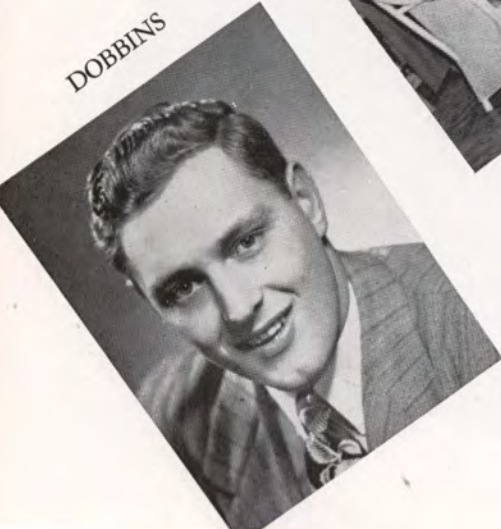
HAENFLER



Burgess, Newman, Watters, Spangler, Stzczynski, Weins, Wickstrom, J. Protextor, Hall.

Re-organized this year after a period of inactivity during the war years, the Phi Sigma fraternity has progressed until it is one of the leading organizations of the campus. The top quota of 36 members has been attained, and all of these men are

DOBBINS



OBRECHT

SIGMA

BROWN

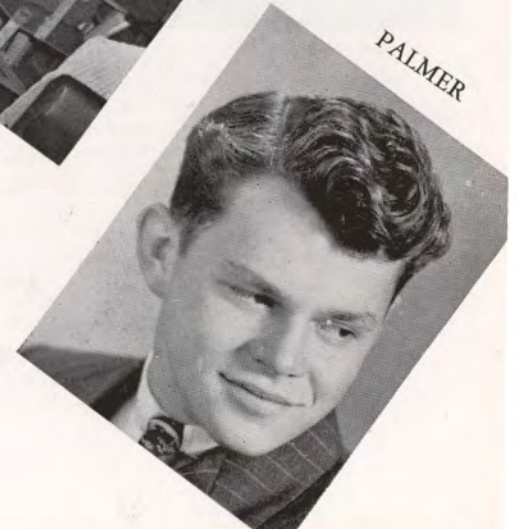
STEVENS



Merriman, Fulton, Smith, Everett, Lamfers, Pickford, Shortenhaus, Nixon, D. Protextor, Madson, Hansen, D. Preston, Randolph, J. Preston, B. Protextor, Bridenbaugh.

prominent in other college activities. Early in the year the Phi Sigma affiliated with Kappa Pi Alpha to form a brother-sister alliance. The fraternity also entertained some of its 500 alumni at the annual Duck Dinner and participated in intra-mural athletics.

PALMER





Top row: Annand, Armbrust, Bornholtz, Branch, Bristow, Byers.
 2nd down: Collopy, Christianson, Cropley, Eldridge, Enochson, Fessendon.
 3rd down: Forrest, Gall, Gerkin, Gingles, Gland, B. Goodenow.
 4th down: D. Goodenow, Gould, Green, Gramaskus, Hazen, Harris.
 Bottom: Hasse, Held, Hintz.

ATD

OFFICERS

	First Semester	Second Semester
<i>President</i>	Garry Gall	Pete Cropley
<i>Vice President</i>	Pete Cropley	Ted Whitlow
<i>Secretary</i>	Robert Irwin	Ken McLaughlin
<i>Treasurer</i>	Ted Whitlow	Don Goodenow
<i>Sergeant-at-Arms</i>	Don Goodenow	Henry Witt
<i>Chaplain</i>	Wilson Gingles	Bob Norris
<i>Pledgemaster</i>	Bob James	Dale Harris



Top row: C. Irwin, B. Irwin, D. James, B. James, Johnson, Kelsey.
 2nd row: McLaughlin, Markland, Messmer, Minnich, Moore, Muma.
 3rd row: Morris, Olson, Schipull, Sellon, Sorenson, Steffen.
 4th row: Stern, Ward, Warner, Whitlow, Williams, Youngstrom.

ALPHA TAU DELTA

Another big year for Morningside College and the brethren of Alpha Tau Delta . . . and what a fun-packed year it was! What memories of activity centered around the house on Peters Avenue! How could one forget Karl Kletschke's dry humor, Christensen's jokes, "Umpire" Witt, the "underground" rumblings, serenading the dorm, Armbrust's laugh, those steaks at Freen Gables, the "Harris" picnic, and CIGARS! Then there were many trips in Cropley's "Mayflower," that nocturnal journey to SDU and the nights of vigilance against a possible return invasion from the boys at Vermillion; the hayride, the battleship float that won first prize in the Homecoming Parade, a piece of art from a tangle of hard work. Just ask Sorenson and Schipull who were in charge.

The 56th annual dinner - dance was held May 1, and at that time a new tradition was established by electing a "Sweetheart of ATD" from their sister sorority KZX. Nor could there have been chosen a lovelier "Sweetheart" than Marge Walton.

Tau Delts were busy in the extra-curricular activities, too! Cropley as president of the Inter-fraternity Council, Harris as the newly elected president of "M" Club, star pitchers Enochson and Kletschke on the Maroon baseball squad, Kelsey singing on KTRI every Wednesday and Friday afternoon, Warner's band playing in and around Sioux City. Yep, it's been a year of real fraternal fellowship, of "Smoothness in manner and strength in all things."

A T D



ATD SWEETHEART, MISS MARGE WALTON



Cropley, Brown, Muma, McKee.

INTER-FRATERNITY COUNCIL

The war is over; the frat men are back; and once more we have an inter-frat council. It is composed of two members from each of the three fraternities. The president this year is "Pete" Cropley. These six delegates have the job of co-ordinating the activities of the frats.

MEMBERS

Pete Cropley	<i>Alpha Tau Delta</i>
Ed Muma	<i>Alpha Tau Delta</i>
Allen Brown	<i>Phi Sigma</i>
Don McKee	<i>Phi Sigma</i>
Ray Spalda	<i>Gamma Iota Alpha</i>
David Weisbrod	<i>Gamma Iota Alpha</i>

INTER-SORORITY COUNCIL

"Who decided that?" is a question frequently heard in sorority halls. The answer is found in a group of three girls from each sorority, the sorority advisors, and the Dean of Women, Miss Tolf. This is the Inter-Sorority Council which makes all the rules and regulations governing sorority activities such as the all-important rushing.

MEMBERS

ALPHA SIGMA	KAPPA PI ALPHA	KAPPA ZETA CHI
Georgia Anderson	Clarice Hammerstrom	Margaret Barks
Bonnie Schultz	Audrey Laude	Kathryn Nelson
Cecily Sherk	Mary Lou Lembcke	Joan Snyder
		Joyce Tronsrue





1st row: Lehmborg, Brewer, Madison, Barber, Schwinderman, Sherk, Smalley.
 2nd row: Hoar, Zeman, Schweizer, Schultz, DeVaul, Osborn, Rasmussen.
 3rd row: Hall, Mattson, Leland, Muilenberg, Rohr, Trospen, Martz.
 4th row: Lind, Johnson, Peterson, Menage, Pettengill, Beckmann.

OFFICERS

	First Semester	Second Semester
<i>President</i>	Darlyne Schwinderman	Cecily Sherk
<i>Vice President</i>	Cecily Sherk	Bonnie Schultz
		Evelyn Hall
<i>Corresponding Secretary</i>	Beverly Peterson	Beverly Johnson
<i>Recording Secretary</i>	Anne Madison	Mildred Hoar
<i>Treasurer</i>	Barbara Brewer	Georgia Anderson
<i>Critic</i>	Janyce Lehmborg	Darlyne Schwinderman
<i>Chaplain</i>	Annalee Zeman	Beverly Peterson
<i>Pianist</i>	Elizabeth Beckmann	Elizabeth Beckmann
<i>Usher</i>	Madelyn Schweizer	Madelyn Schweizer
<i>Reporter</i>	Vera DeVaul	Mary Lou Lind
<i>Historian</i>	Glenna Martz	Harriet Trospen

PLEDGES

UPPERCLASSMEN: Gretchen Dokken, Mary Vanderwilt, Phyllis Pickard, Beverly Welton, Ruth Wagner, Myrna Takeuchi.
 FRESHMEN: Carol Brewer, Phyllis Grote, Carol Hatch, Dorothy Johns, Norma Nelson, Marilyn Quisenberry, Norma Rasmussen, Marian Schuchardt, Bonnie Stark, Ida Belle Zwald.



ALPHA SIGMA

Moving furniture, having five pound parties, campaigning for elections, affiliating with the G. I. A. —all of these activities constituted a year of fun and friendship for the Alpha Sigma Sisters. The Sig star shines on their sponsor, Miss Barber, and on the continuing and departing members.





1st row: Harter, Lembcke, Cripe, Jones, Soiseth.
 2nd row: Bovis, Dubes, Englebrecht, Laude, Fortner, Tappan, Prescott.
 3rd row: Harding, Lamson, Momsen, Townley, Culbertson, Sauter, Brunson.
 4th row: Kiessig, West, Clem, Everett, Hackett, Hammerstrom, Lowe, Barrett.

OFFICERS

	First Semester	Second Semester
<i>President</i>	Mary Lou Lembcke	Clarice Hammerstrom
<i>Vice President</i>	Marge Jones	Audrey Laude
<i>Secretary - Recording</i>	Maureen Harter	Irene Hackett
<i>Corresponding Secretary</i>	Audrey Laude	Ann Barrett
<i>Treasurer</i>	Janie Soiseth	Ione Prescott
<i>Critic</i>	Ann Barrett	Joyce Townley
<i>Social Chairman</i>	Clarice Moone	Mary Lou Lembcke
<i>Chaplain</i>	Irene Hackett	Helen Harding
<i>Sergeant-at-Arms</i>	Donna Lowe	Annette Brunson
<i>Hall Chairman</i>	Lyn West	Anne Fortner
<i>Reporter</i>	Eleanor Everett	Maureen Harter
<i>Librarian</i>	Ione Prescott	Dorothy Clem

PLEDGES

UPPER CLASSMEN: Betty Black, Verlys Moser, Eleanor Bridenbaugh, Dorothy Zimmerman, Elaine Johnson.
 FRESHMEN: Jackeen Godson, Elizabeth MacIntyre, Donna Reeves, Joyce Klempnaur, Beverly Majorovis, Joan Blazovich, Shirley Webber, Mary Burright, Laura Bunten, Merrilee Albertson, Gweneth Johnson, Millicent Gorchow.



KAPPA PI ALPHA

One of the popular sororities at Morningside is the busy Kappa Pi Alpha Sorority. This year the Pi's had both five and ten pound parties, and yes, even a fifteen pound party. Add to that picnics, showers, campaigns, a new paint job, and the activities of two fine pledge groups, and the result is a well-rounded year for the Pi's.





1st row: Tronsrue, Geake, K. Nelson, Wright, Taylor.
 2nd row: Bozarth, B. Williams, Snyder, C. Corrie, McIntosh, Rehnblom, Hofstad, Bartram.
 3rd row: B. Barks, Jones, Novak, Zeizzler, M. Williams, M. Barks, Larson, M. Briggs, McCallum.
 4th row: D. Corrie, Hansen, G. Nelson, Rorapough, M. J. Briggs, Walton, Mueller, Raveling, O'Rourke.

KAPPA ZETA CHI

OFFICERS

	First Semester	Second Semester
<i>President</i>	Kathryn Nelson	Joyce Tronsrue
<i>Vice President</i>	Myrtle Geake	Lois McCallum
<i>Recording Secretary</i>	Joyce Tronsrue	Margorie Walton
<i>Corresponding Secretary</i>	Muriel Briggs	Myrtle Geake
<i>Treasurer</i>	Darlene Taylor	Mary Jo Briggs
<i>First Critic</i>	Lois McCallum	Kathryn Nelson
<i>Second Critic</i>	Beverly Barks	Darlene Taylor
<i>Social Chairman</i>	Barbara Wright	Wilma Bozarth
<i>First Directress</i>	Lyla Rehnblom	Margaret Barks
<i>Second Directress</i>	Margaret Barks	Harriet Jones
<i>First Usber</i>	Joan Novak	Carol Corrie
<i>Second Usber</i>	Leila Mueller	Lyla Rehnblom
<i>Chaplain</i>	Lorna Williams	Elsie Larson
<i>Reporter</i>	Mary Jo Briggs	Mary Williams
<i>Librarian</i>	Helen Ann Bartram	Doris Corrie
<i>Advisor</i>	Mrs. Florence Kingsbury	

HONORARY MEMBERS: Mrs. Ira J. Gwinn, Mrs. John Magee, Mrs. M. Graber.

PLEDGES: Nancy Asmussen, Patricia Barton, Cleta Everson, Shirley Hoefer, Joan Johnson, Doris Kingsbury, Kay Knapp, Florence Kolp, Marjorie Marksbury, Phyllis Minden, Joan Rowles.



The Zet Hall burst out in the "New Look" with its luscious grey carpeting and those eye-catching drapes. Even the furniture is in the process of receiving new life and color. Five pound parties—three on one day!—our Katie as Homecoming Queen, the rummage sale, entertaining guests at the Friday teas, the excitement of rushing, our wonderful pledge group, Mrs. K. as our advisor, and the up-river trip made this a year to remember for all Zets.





2nd row: Protector, Brock, Piper, Collopy, Blair, Erps, Langstraat, Benham, Callahan.
 3rd row: Preston, Harris, Stevens, Wansink, Enockson, Bornholt, Styczynski, Fulton, Bristow.
 1st row: Hoefer, Shortenhaus, Newman, Green, Harmon, Johnson, Comb.

"M" CLUB

"M" Club is the men's organization of all major athletic award winners on the campus. This year "M" Clubbers established a new tradition, the "M" Club Dinner Dance. They also sponsored a steak dinner honoring the coaches and outstanding athletes of Sioux City and surrounding towns. The club participated in Freshman - Sophomore Day activities, Sadie Hawkins Day, and took charge of concessions at basketball games.

OFFICERS

Howard Peterson	<i>President</i>
Roy Haenfler	<i>Vice President</i>
Ralph Wickstrom	<i>Secretary-Treasurer</i>

WOMEN'S SELF GOVERNING ASSOCIATION

OFFICERS

Lois McCallum	<i>President</i>
Ruth Saupe	<i>Vice President</i>
Elizabeth Beckmann	<i>Secretary</i>
Marge Jones	<i>Treasurer</i>
Miss Tolf	<i>Advisor</i>



Booz, Lehnus, Peterson, McCallum, Saupe, Beckmann, Bozarth, Larson, Meredith, Brewer, Haupt, Burgess.



4th row: Eikelberry, Carlson, Hewlett, J. Reibhoff, Balkema, Schössow, Usher, Runion.
 3rd row: Schultz, Mitchell, Spear, Witter, Rasmussen, McKeown, Taylor, Lusher, Larson.
 2nd row: Meredith, Muilenberg, Saupe, Redenbaugh, Allen, Bruce, MacCollin.
 1st row: Feller, Madison, Smalley, L. Reibhoff, Williams, Vandervelde.

OFFICERS

Ernest Larson	<i>President</i>
Vesta Feller	<i>Vice President</i>
Annalie Zeman	<i>Secretary</i>
Dale Hewlitt	<i>Treasurer</i>
Carl Carlsen	<i>Marshal</i>
Ruth Saupe	<i>Publicity</i>
Dr. E. W. Saunders	<i>Advisor</i>

KAPPA CHI

Kappa Chi is made up of students who choose full time church work, and boasts a membership of fifty-five strong. Meetings have been held monthly in the home of the members and advisers. In November, Kappa Chi entertained sixty members of the Albright Fellowship of Western Union College at dinner. Deputation teams were sent to near-by churches and Kappa Chi cooperated in Religious Emphasis Week.

GRACE COLLEGIANS

The Grace Collegians are members of the college youth fellowship at Grace Church, which meets every Sunday evening. Representatives were sent to the Methodist Student Movement at Boone this spring. The Collegians also had a Halloween party, went Christmas caroling, sponsored a roller-skating party, participated in Religious Emphasis Week, and visited Mt. Sinai Synagogue.

Grace Collegians have had a successful year in fun, friendship, and Christian fellowship.

OFFICERS

Nelson Price	<i>President</i>
John Balkema	<i>Vice President</i>
Betty Sarchet	<i>Secretary-Treasurer</i>
Joanne Meredith	<i>Publicity</i>
Tom McKeown	<i>Social Chairman</i>



1st row: DeVaul, Ramsey, L. Reibhoff, Wiley, Redenbaugh, Vandervelde, Long, Williams.
 2nd row: Madison, Barks, Feller, Geake, Fiddick, Zwald, Davids, Cook, MacCollin, Lusher.
 3rd row: Mitchell, J. Meredith, Muilenberg, Bruce, Saupe, Peterson, Brewer, H. Meredith, Palmer, Harding.
 4th row: Eikelberry, Carlson, Hewlett, J. Reibhoff, Balkema, Ralston, Price, McKeown, Taylor, Usher.



1st row: Reibhoff, DeVaul, Feller, J. Meredith, Long, Ramsey, Williams, Akeson.
 2nd row: Lind, Wiley, Geake, Barks, Brewer, Johnson, Fiddick, McGlashan, Brand, Linders.
 3rd row: Redenbaugh, Muilenberg, Bruce, Saupe, Peterson, Allen, H. Meredith, Palmer, Mugge.

OFFICERS

Vesta Feller	<i>President</i>
Vera DeVaul	<i>Vice President</i>
Mary Lou Ling	<i>Secretary</i>
Joan Meredith	<i>Treasurer</i>
Mrs. E. Saunders	<i>Advisor</i>

Y. W. C. A.

Y. W. members participated in Religious Emphasis Week, worked for the World Student Service Fund drive, sponsored a "Get-Acquainted Dance" at the beginning of the year, participated in the women's intramural tournaments, sponsored the weekly Student-Faculty Coffee Hours at the Barn, and had their traditional heart sister week. These are just a few of the reasons why Y. W. is such a popular, busy organization.

Y. M. C. A.

The Y. M. C. has reached new heights during the past year. Some of its projects included sponsoring an organized Men's Breakfast Club, and securing outstanding speakers on "Problems in Palestine" and "Negro-White" problems. The College Y. M. C. A. was represented in both local and district Y. M. C. A. conferences. Joint Y. M. and Y. W. projects supported the W. S. S. F. Drive, Recreational Programs on Saturday evenings, and sponsored a Prayer and Devotion Study Group.

OFFICERS

Jack Spear	<i>President</i>
Lyle Schossow	<i>Vice President</i>
Don Kelsey	<i>Secretary</i>
Bob Franken	<i>Treasurer</i>
Eugene Rasmussen	<i>Social Action</i>
Merlin Davies	<i>World Relatedness</i>
Thomas McKeown	<i>Campus Affairs</i>
Chester Guinn	<i>Christian Heritage</i>



1st row: Witter, Rasmussen, Spear, McKeown.
 2nd row: Schossow, Usher, Balkema, LeFleur.
 3rd row: Larson, Ralston, Runion, Carlsen, Hewlett.

MORNINGSIDE SAVINGS BANK

Complete Banking Service

4006 Morningside Avenue

Sioux City, Iowa

MOLSKOW PHARMACY

JOHN MOLSKOW, Proprietor

Phone 6-6914

FOR BETTER SERVICE STOP AT MOLSKOW'S

2004 So. St. Aubin Street

Sioux City, Iowa

GLENN H. JONES

FURS

WHERE VALUES ARE HARD TO BEAT

QUALITY *Glenn Mode* FURS

Furs That Are First in Quality, Style and Economy

Dial 6-7286

4306 Morningside Avenue

MORNINGSIDE STATE BANK

"THE OLD BANK IN MORNINGSIDE"

Dr. J. E. DeWalt
D. L. Griffen

John Scott, Jr.
D. B. Harrington

Don Nissen

Students and Graduates . . . Keep Your Rights and Liberties!

Your education means a lot in America. Here you are at liberty to exercise your initiative, imagination and resources. Here you can go . . . work . . . worship where you please, and say what you think. We look to you, the leaders of tomorrow, to keep it that way. That's what made America great!



REDDY KILOWATT
your Electrical Servant

Good luck to you!

Sioux City
Gas & Electric Company

TODDLERS' SHOPPE

"Children's Outfitters"

1419 Morningside Avenue

Sioux City, Iowa

CONGRATULATIONS AND BEST WISHES TO THE CLASS OF 1948

We Have Enjoyed Your Patronage and Hope
Both Our Futures Will Be Successful.

CURRAN PHARMACY

HUGH L. CURRAN, *Pharmacist*

Phone 6-7887

1423 Morningside Avenue

The Convenient Clothing Store

PERLETH'S

in Peters Park

4008 Morningside Ave.

COLLEGE INN

Your Host in Sioux City

Chicken-in-the-Basket

LUNCHEONS :: STEAK DINNERS

Located in Peters Park

1911 Morningside Avenue



Compliments of

Sioux City's
Outstanding
Insulation
Company

313-14 TOY
BANK BLDG.

FERRIS FLORIST

Fresh Flowers Daily
from Our Own
Greenhouse

CALL 8-7505



SCHAEFER'S 5c to 1.00

Compliments of

TEEMAN THE TAILOR

1903 Morningside Ave.

Phone 6-5690

Compliments of

THE
PARK MARKET

2016 So. St. Aubin Street

ANDERSON'S BAKERY

Morningside's High Class

Pastry Shop

At Peters Park

Phone 6-5966

HANSEN

GLASS & PAINT CO.

Phone 5-8863

504-10 Douglas Street



BOTTLED UNDER AUTHORITY OF THE COCA-COLA COMPANY BY

GRAYSON'S
"SUITS ME"

Fourth and Douglas

Phone 8-3880

SPEER'S
VARIETY

The Friendly Variety Store
1421 Morningside Ave.
Phone 6-7130

FERRIS
SHOE

REPAIR
SHOP

Compliments of
TESSLER'S CLOTHING COMPANY

306 Fourth Street

SAVE

*for
Peace of Mind*

• Worried by an uncertain tomorrow? Build a secure future with a backlog of insured savings. At this friendly local institution your savings are insured up to \$5,000.

FIRST FEDERAL SAVINGS AND LOAN ASSOCIATION OF SIOUX CITY
511 Pierce Street

Hey, Gang!

LET'S ALL EAT AT

THE BARN

SNACK BAR AND CAFETERIA

Quality with Good Service
at the
GREIGG'S HOUSE OF
HAMBURGERS

Phone 6-9249
1405 Morningside Avenue

BUCK'S
BOOTERIE

Phone 5-5814 420 Pierce Street

MORNINGSIDE'S
FRIENDLY STORE

Burtness
Hardware

2012 So. St. Aubin

Compliments of

Bush Cleaners

"Just Off the Campus"
1417 Morningside Ave.
Phone 6-7355

STUDENTS . . .

You are always welcome here. Enjoy the convenience of a Downtown Checking Account.

THE TOY NATIONAL BANK

"Located in the Heart of Downtown Sioux City at 4th and Nebraska Sts."

DR. E. C. HOWE

DENTIST

1907 Morningside Avenue

Telephone 6-7681

PRIMMER'S

SHOE BOX

Home of Your Campus Shoes

Made by Sandler of Boston

2014 S. ST. AUBIN

A Complete
**PERSONAL
INSURANCE SERVICE**
ALL FORMS LIFE
SICKNESS, ACCIDENT
HOSPITALIZATION
INSURANCE
FOR Everyone!

MUTUAL BENEFIT
HEALTH & ACCIDENT ASS'N.

UNITED BENEFIT
LIFE INSURANCE COMPANY
Companion Companies, Omaha

M. L. MINNIG, MGR.
432 Badgerow Bldg.
Sioux City

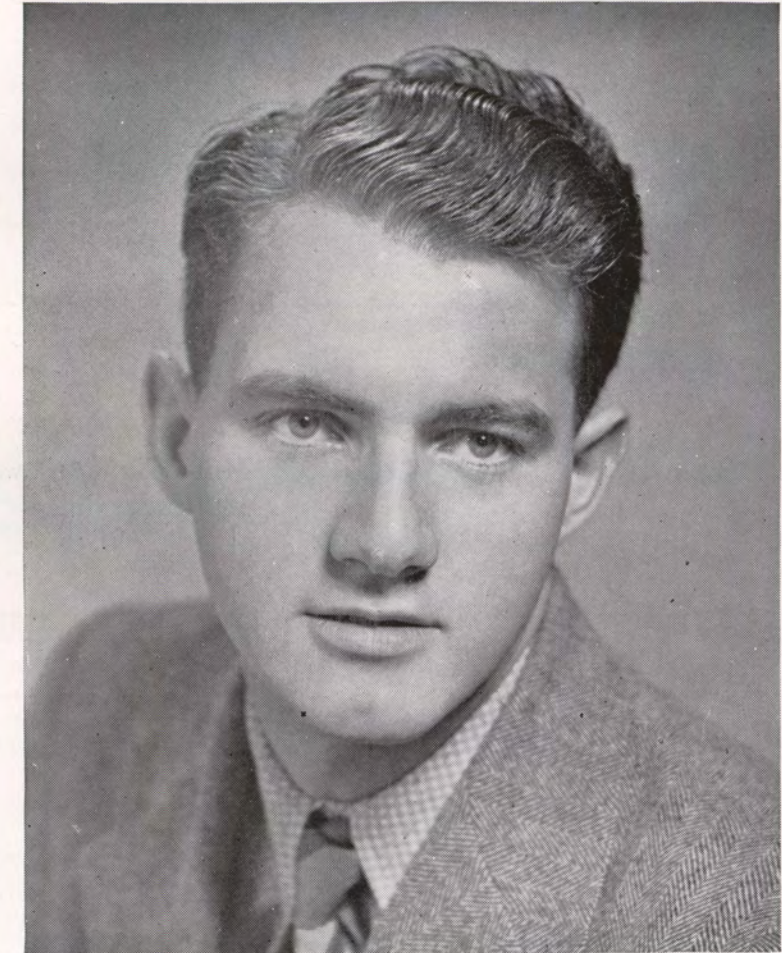
R. C. COOMER

CONSTRUCTION COMPANY

ENGINEERS AND CONTRACTORS

523 Insurance Exchange Building

Sioux City



PORTRAIT PHOTOGRAPHERS OF THE

1948 SIOUX

HOUSE OF DISTINCTIVE PHOTOGRAPHY

HOLLISTER STUDIO

1422 Pierce Street

Phone 8-4446

The New

MORNINGSIDE CLEANERS

DYERS AND TAILORS

Nothing Short of the Best

Phone 6-6336
3940 Transit Ave.

Proprietor
Joseph Stevens

DWIGHT HAUFF SPORTING GOODS CO.

AGENT FOR

517 Pierce Street

A. J. Spalding & Bros.

Sioux City, Iowa

Up-to-Date Athletic Equipment

Telephone 8-1877

SECURITY
NATIONAL BANK
of Sioux City



FINEST GROCERIES

MEATS AND

FRESH FRUITS AND

VEGETABLES

at

VAN EATON'S

O. P. SKAGGS
Efficient Service
FOOD **System** STORES

The Rexall

Drugstore

in

Morningside

GRAHAM'S DRUG STORE

4014 Morningside Avenue

Phone 6-6244

THE FAVORITE CANDY OF THE NORTHWEST . . .

LA FAMA CHOCOLATES

One of a Family of Famous Chocolates

Made by

JOHNSON BISCUIT COMPANY

Sioux City, Iowa

A KEY TO A SAFE TOMORROW
CONSISTENT SAVING TODAY

Open a Savings Account at This Bank Today

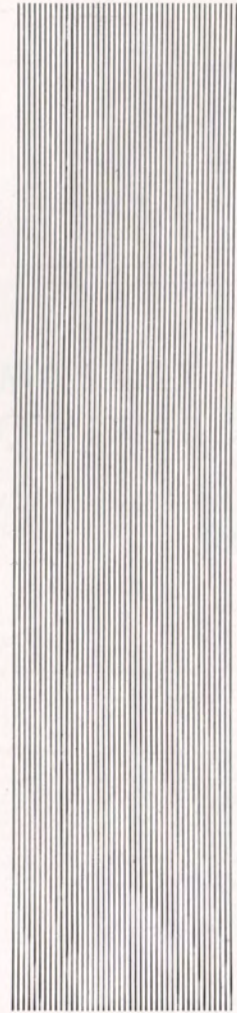
FIRST NATIONAL BANK
IN SIOUX CITY

Member Federal Deposit Insurance Corporation

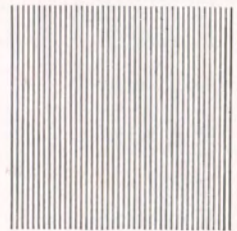
S-D

ENGRAVING CO.

MAKERS OF FINE PRINTING
PLATES FOR BLACK & COLOR
ARTISTS, PHOTO-ENGRAVERS,
OFFSET PLATES



ENGRAVERS
TO THE
1948
SIOUX



320½ N. Main Avenue
SIOUX FALLS, SOUTH DAKOTA

A FEW OF THE MANY THINGS WE PRINT

Booklets

Direct-Mail Pieces

Business Forms

Financial Reports

Calendars

Envelope Stuffers

Cards

Pamphlets

Catalogues

Envelopes

Checks

Folders

Circulars Programs

D. W. VERSTEGEN, Inc.

PRINTER
-AND-
PUBLISHER

413 Wall Street

PLANNED PRINTING

Phone 8-3553

ACCIDENTS WILL HAPPEN!



SCISSORS AND PASTE AT 2:00 A. M.

The Sioux Staff wishes to express its gratitude and appreciation to the following who have made the publication of this yearbook possible. To these people go our sincere thanks.

D. W. Versteegen, Inc., Printers & Publishers, Sioux City
South Dakota Engraving Company, Sioux Falls, S. D.
Hollister Studio, Sioux City
The S. K. Smith Cover Company, Chicago
Firms advertising in the SIOUX

Autographs

Autographs

Autographs

Autographs

Autographs

Autograph

1

2

3

4

5

6

7

8

