

nineteen hundred forty one

Giant

378.7774
M8285
1941

THE SIOUX

Published by

The 1941 Staff

MORNINGSIDE COLLEGE

Ev. 423

EDITOR—BETTY SCHUNCK

BUSINESS MANAGER—RALPH BROWN

FACULTY ADVISER—JASON SAUNDERSON



R
 378.7774
 M826a
 1941

FOREWORD



The staff presents to the student body and faculty of Morningside College the 1941 Sioux. We hope that through this book you may relive many happy experiences of the past year and that its pages may be a friendly reminder of pleasant college days.

DEDICATION



To Miss Lillian English Dimmitt,

who is now serving as Dean Emerita after forty-seven years of loyal service at Morningside, the 1941 **SIoux** is affectionately dedicated.



PRESIDENT ROADMAN



EARL ALAN ROADMAN
B.D., D.D., LL.D.
Iowa State Teachers College
Upper Iowa University
Boston University Graduate School
University of Halle, Germany

The Staff of The 1941 Sioux

Assistant Editor.....Geraldine Booth
 Literary Editor.....Gwendolyn Downey
 Senior Editor.....Dorothy Carrigg
 Junior Editor.....Betty Hoefler
 Dramatics Editor.....Mary McBride
 Forensics Editor.....Robert Rae
 Photography Editor.....Kathleen Schatz
 Photographer.....Robert Moore
 Snapshot Editor.....Helen Johnson
 Music Editor.....Mary Louise Barrett
 Women's Athletics.....Frances Forsberg
 Men's Athletics.....Don Widler
 Artist.....Robert Posten
 Typist.....Alice Swanson
 Printing.....Verstegen Printing Company
 Engraving.....Bierman Engraving Company

—S. C. Tribune.



Back Row—Rae, Posten, Widler, McBride, Schatz, Hoefler, Johnson, Swanson, Forsberg, Downey, Barrett.
 Seated—Booth, Schunck.

FACULTY & STUDENTS



BOARD OF TRUSTEES

OFFICERS

D. W. STEWART, Sioux City, Iowa.....President
 GORDON METCALF, Sioux City, Iowa.....First Vice-President
 JOHN KOLP, Manson, Iowa.....Second Vice-President
 T. N. McCLURE, Sioux City, Iowa.....Secretary-Treasurer

TRUSTEES OF HONOR

Emlin Bergeson, Sioux City, Iowa
 O. M. Bond, Sioux City, Iowa
 C. C. Harshbarger, Onawa, Iowa
 J. N. Hughes, Des Moines, Iowa
 A. W. Jones, Cherokee, Iowa
 A. N. Jackson, Sioux City, Iowa
 Mrs. C. F. Long, Sioux City, Iowa

TERMS EXPIRE 1941

C. L. Barks, Orange City, Iowa
 F. E. Burgess, Spencer, Iowa
 J. C. Buthman, Algona, Iowa
 J. J. Davies, Fort Dodge, Iowa
 H. I. Down, Sioux City, Iowa
 J. A. Farnham, Cherokee, Iowa
 J. V. Madison, Sioux City, Iowa
 L. H. Scheerer, Spencer, Iowa
 C. N. Smith, Sioux City, Iowa
 D. W. Stewart, Sioux City, Iowa

TERMS EXPIRE 1942

H. M. Burns, Algona, Iowa
 Ray J. Harrington, Sioux City, Iowa
 Leon Hickman, Pittsburg, Pennsylvania
 C. H. Kingsbury, Ponca, Nebraska
 John Kolp, Manson, Iowa
 W. H. Lease, Akron, Iowa
 C. S. Van Eaton, Sioux City, Iowa
 Miss Rae Wetmore, Sioux City, Iowa

TERMS EXPIRE 1943

W. L. Breaw, Humboldt, Iowa
 C. W. Britton, Sioux City, Iowa
 G. W. Dunn, Sioux City, Iowa
 L. W. Feik, Sioux City, Iowa
 Clifford Harper, Sioux City, Iowa
 Gordon Metcalf, Sioux City, Iowa
 R. F. Roach, Sioux City, Iowa



PAUL EMANUEL JOHNSON
*Dean of the College and Professor of
 Philosophy and Religion*

Degree—A. B. at Cornell College.
 M. A. at University of Chicago.
 S. T. B. at Boston University.
 Ph. D. at Boston University.
 Graduate Fellow in Philosophy, Brown University.
 Graduate Assistant in Philosophy, Brown University.
 Graduate Studies, Harvard University.



MYRON EARLE GRABER
*Dean of Men and Professor
 of Physics*

Degree—A. B. at Heidelberg University.
 M. A. at Heidelberg University.
 Ph. D. at University of Iowa.
 Graduate Student—University of Michigan.
 Columbia University.
 Ohio State University.
 Fellow in Physics—University of Chicago.
 University of Iowa.



WINIFRED GROSS FELTON
*Acting Dean of Women and
 Social Director of the
 Dormitory*

Degree—A. B. at Yankton College.
 M. A. at University of Iowa.
 Graduate Student—Northwestern University.

PEARL AMUNDSEN
 B.S.
Assistant Librarian

University of South Dakota, University
 of Chicago, University of Illinois.



CLARA LOUISE ASMUS
 Mus. B.
Instructor in Pianoforte
 Morningside College, Pupil of Rudolph
 Ganz, Chicago Musical College.

THOMAS SCRIBNER CANNING
 Mus. B., Mus. M.
*Head of Departments of Organ
 and Theory*
 Oberlin College, Eastman School of
 Music.



HAZEL EVERHART CARTER
 B.S., A.M.
*Head of School Music Depart-
 ment and Instructor in
 Pianoforte*
 Missouri State Teachers College, Juilliard
 School of Music, Columbia University,
 American Institute of Normal Methods,
 University of Southern California.

EDNA COLE
 A.B., A. M.
*Instructor in Physical Education
 for Women*
 University of Wyoming, University of
 Michigan, University of Wisconsin.



JAMES AUSTIN COSS
 B.S., M.S.
Professor of Chemistry
 Illinois Wesleyan University, University
 of Illinois, University of Chicago,
 Clark University.

EARLE EDWARD EMME
 A.B., B.D., A.M., Ph.D.
Professor of Psychology

Northwestern University, Garrett Biblical
 Institute, Columbia University, Boston
 University, Northwestern University, Uni-
 versity of Chicago, University of Iowa.



JOHN GARRETT FELTON
 A.B., A.M.
Instructor in Speech
 University of Minnesota, University
 of Iowa.

Laura Clara Fischer

A.B., A.M.

Professor of German

Carleton College, University of Chicago, University of Colorado, University of Wisconsin, University of Southern California.



Ira James Gwinn

A.B., M.S.

Assistant Professor of Physics

Morningside College, University of Iowa.

Ethel Thompson Kucinski

Mus. B.

Instructor in Pianoforte

Morningside College, Eastman School of Music, Chicago Musical College, Cleveland Institute, Juilliard School of Music, Pupil of Rudolph Ganz, Raymond Wilson, Arthur Loesser, James Friskin.



Leo Kucinski

Mus. B.

Head of Violin Department

Morningside College, Oberlin Conservatory, Cleveland Institute of Music, Juilliard Graduate School of Music, Warsaw Conservatory of Music, Pupil of Edward Idzikowski, Charlotte DeMuth Williams, De Ribaupierre, Albert Stoessel, Rubin Goldmark, Noam Blinder.

Horace B. Hawthorn

B.S., M.S., Ph.D.

Instructor in Sociology

Iowa State College, University of Wisconsin, University of Iowa.



Marian Howe

B.S.

Instructor in Commercial

Iowa State College, Ames Business College, Gregg College, Chicago.

Helen I. Loveland

A.B.

Professor Emerita of English Language

Smith College, Oxford University.



Elizabeth Newton MacCollin

A.B., Mus. B.

Instructor in Voice

Oberlin Conservatory of Music, Lake Geneva Summer School, Morningside College, Pupil of L. A. Torrens.

Henry F. Kanthlemer

A.B., A.M.

Professor of Romance Languages

Cornell College, Harvard University, Institut Francais and University of Madrid, University of Chicago, University of Dijon, University of Mexico.



Gordon James Kinney

Mus. B.

Instructor in Violoncello and Double Bass

Maas School of Music, Eastman School of Music, Pupil of Karl Agnesy, Nelson Watson, Gerald Maas, Paul Kefer.

Paul MacCollin

A.B., Mus. B.

Director of the Conservatory of Music and Professor of Voice

Oberlin College, Morningside College, Oberlin Conservatory of Music, Pupil of Dr. Carl Dufft, Ellison Van Hoose, L. A. Torrens.



Ruth McDonald

A.B., M.S.

Instructor in Biology

Morningside College, Virginia Polytechnic Institute, Iowa State College.

Katherine Kaul Kinney

Mus. B.

Instructor in Pianoforte

University of Kansas, Eastman School of Music, Pupil of Richard Halliday, Lawrence Schaffler.



James Earl Kirkpatrick

A.B., A.M., Ph.D.

Professor of Education

Cornell College, University of Iowa.

Marcia McNee

A.B., A.M.

Instructor in Elementary Education

Upper Iowa University, University of Chicago, University of Iowa, University of Minnesota.



Edwarda Metz

Mus. B.

Instructor in Pianoforte

Boguslawski College of Music, Chicago Musical College, Curtis Institute, American Conservatory, Juilliard School of Music, Gordon String Quartet Music Association, Pupil of Moissaye Boguslawski, Louis V. Saar, Tomford Harris, Louise Robyn, Ernest Hutcheson, Austin Conradi, Harold Bauer, Angella Diller, James Friskin.

MENDAL B. MILLER

A.B., A.M.

Assistant Professor of Economics and Sociology

Greenville College, University of Southern California, University of Minnesota, University of Iowa.



MIRAH MILLS

A.B., A.M.

Professor of English and Secretary of the Faculty

Morningside College, University of Chicago, University of Michigan, University of Southern California.

ETHEL RUTH MURRAY

A.B., A.M.

Registrar and Assistant Professor of Ancient Languages and History

Morningside College, University of Illinois, Columbia University.



JAMES REISTRUP

Mus. B.

Head of Pianoforte Department

Morningside College, Pupil of Emma Sage, J. Erich Schmall, Theo. Otterstrom, Fritz Vogeley, Rudolph Ganz, Cecil Burleigh.

ROBERT GLEN ROGERS

A.B.

Instructor in Physical Education and Assistant Athletic Director

Morningside College, University of Southern California, University of Illinois.



ELSYE TASH SATER

A.B., A.M.

Instructor in English

Augustana College, University of Virginia, Illinois State Normal University.

JASON M. SAUNDERSON

A.B.

Professor of Physical Education and Director of Athletics

Albion College.



BERNARD JAMES SCHERER

B.S.

Instructor in Physical Education

University of Nebraska.

GRACE SMITH

A.B., A.M.

Instructor in Art

University of Iowa, University of South Dakota.



THOMAS C. STEPHENS

A.B., M.D.

Professor of Biology

Adrian College, University of Chicago, Kansas City University, Kansas State University, Marine Biological Laboratory, University of Iowa, University of Michigan.

JOHN WILSON STEWART

A.B., A.M.

Professor of Economics

Geneva College, Montana State University, University of Iowa, University of Illinois, University of Washington.



LAURA TASCHE

B.S.

Instructor in Commercial

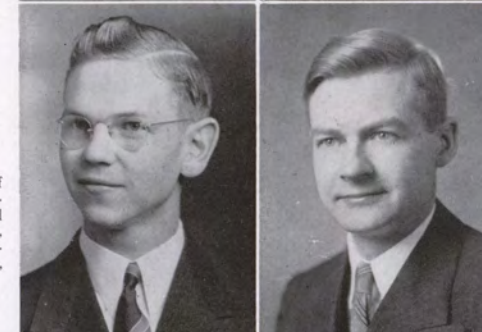
University of South Dakota, Spearfish Normal, Aberdeen Normal, Fort Wayne Business Institute.

EVERETT TIMM

Mus. B.

Head of Wind Instrument Department

Morningside College, Juilliard School of Music, Eastman School of Music, Chautauqua Summer School, Pupil of Donald Lentz, George Carlson, Georges Barrere, Arthur Lora, Daniel Groth, Donald McDonald, Adolph Schmid, Edward Royce, Bernard Rogers, Herbert Elwell.



THOMAS E. TWEITO

A.B., M.A., Ph.D.

Professor of History

St. Olaf College, University of Minnesota, University of Iowa.

ROBERT N. VAN HORNE

Ph.B.

Professor of Mathematics

Morningside College, Johns Hopkins University, University of Chicago.



HARRIET P. WIRICK

A.B., A.M., B.S.

Librarian

University of Wisconsin, University of Minnesota, University of Illinois.

FAITH FOSTER WOODFORD

A.B., Mus. B.

Instructor in Pianoforte and History of Music

Morningside College, University of Michigan, Pupil of Emil Liebling, Alberto Jonas, Clarence Eddy, John Doane, Olaf Anderson, Howard Wells, Palmer Christian.



MARJORIE ARKWRIGHT

B.S.

Manager of Women's Residence Halls

Stevens College, University of Minnesota, Iowa State College.



ILA BUNCH

Cashier

Morningside College.



MRS. MAE MACARTHUR

Bookkeeper

Western Union College, National Business Training School.



T. N. McCLURE

Bursar

Vincennes University, University of Chicago.



MINETTA MILLER

A.B.

Secretary to the President

Dakota Wesleyan, Morningside College.



VICTOR V. SCHULDT

A.B., B.D.

Director of Admissions

Morningside College, Boston University, University of Chicago, Chicago Theological Seminary.



ELMA VOLLINK

Secretary to the Bursar

National Business Training School.



MARJ BOCK, R. N.

College Nurse

DR. C. F. BERKSTRESSER, M. D.

College Physician



KATHLEEN SCHNOOR, R. N.

Dormitory Nurse

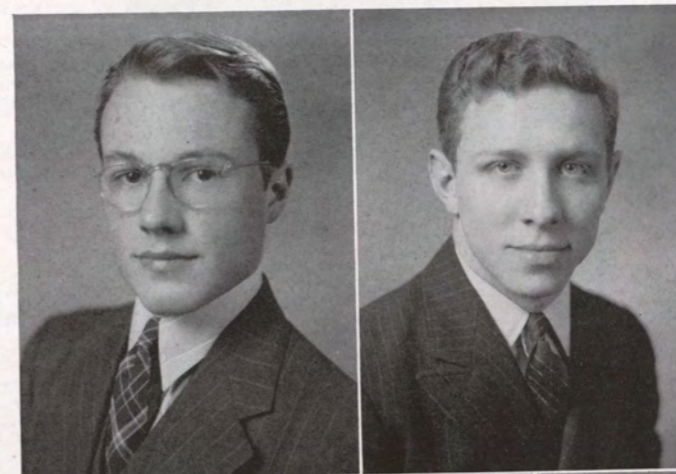


HEALTH OFFICE

CLASS OF 1941



SENIOR OFFICERS



President Eugene Emme
 Vice-President Duane Halford
 Secretary-Treasurer Frances Forsberg
 Student Council Representatives..... Joyce Held, Bruce Lindsay

EDWIN L. ADAMS, JR.

A.B.

Sioux City, Iowa

"M" Club 2, 3, 4, President 4; Football 2, 3, 4; "Who's Who."

"He'd stop St. Peter's roll call to ask a question."



EDYTHE MAE ALBERT

B.S.M.

Montgomery, Iowa

Estherville Jr. College 1; Kappa Zeta Chi 3, 4, Chaplain 4; Mu Phi Epsilon 3, Secretary 4; Chapel Choir 2, 3, 4; W. S. G. A. Vice-President 4.

"She looks studious, but looks may be deceiving."



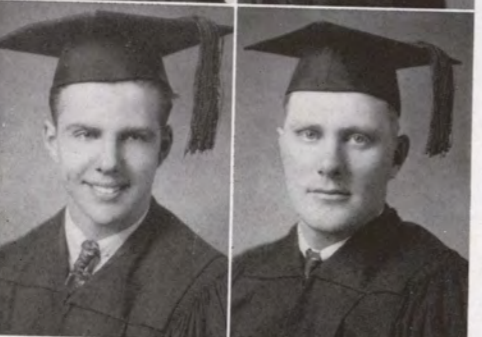
VIC ALVEY

B.S.

Sioux City, Iowa

"M" Club 3, 4; Pre-Engineers Vice-President 2, President 4; Sigma Pi Sigma 3, 4; Collegian Reporter 4; Photography Club President 3, 4; Aviation Club President 2, 3, Vice-President 1.

"All work and no play makes 'jack' and plenty of it."



FRANCIS AMES

A.B.

Marcus, Iowa

Sigma Theta Rho 1, 2, 3, 4, President 4, Chaplain 4, Treasurer 3.

"By saying nothing you may pass as wise."



KEITH ARNOLD

A.B.

Sibley, Iowa

Psi Chi 4; Biology Club 3, 4, President 4; "M" Club 4; Beta Beta Beta 2, 3, 4, President 3; Chapel Choir 2, 3, 4; Football 4.

"It's a great plague to be a handsome man."

MARY LOUISE BARRETT

B.S.M.

Sioux City, Iowa

Briar Cliff College 1; Kappa Zeta Chi 2, 3, 4, Librarian 4; Cosmopolitan Club 2, 3, 4; Sigma Mu 2; Mu Phi Epsilon 3, 4, Vice-President 4, Warden 3; Chapel Choir 3, 4; Collegian Reporter 4; "Sioux" 4.

"Thy modesty is a candle to thy merit."

MILTON BINGER

A.B.

Tulare, South Dakota
University of South Dakota 1;
Intramural 3, 4.

"Nobody home, but maybe they are coming."

MARJA BOCK

A.B.

Loomis, South Dakota

Dakota Wesleyan University 1; Methodist State Hospital; Alpha Sigma 4; Psi Chi 4.

"She certainly knows her anatomy."

ROBERT BROOKS

B.S.M.

Cleghorn, Iowa

Phi Mu Alpha 4; Choir 1, 2; Symphony Orchestra 1, 2, 3, 4; Band 1, 2, 3, 4.

"All that shines is not serge."



DORIS BROWN

A.B.

Sioux City, Iowa

Briar Cliff College 1; Drake University 2; Kappa Pi Alpha 3, 4, Treasurer 4, Corresponding Secretary 4; Pi Gamma Mu 4; Psi Chi, Vice-President 4; Collegian Reporter 4; Agora Board 4.

"Bit of heaven passing by."



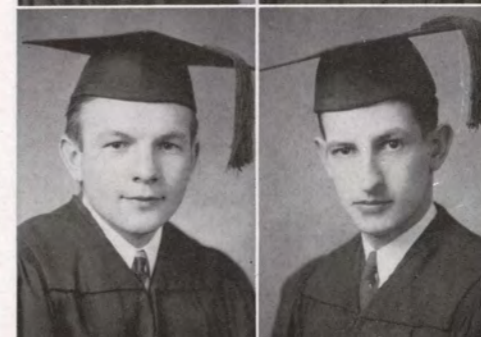
RALPH BROWN

A.B.

Hinton, Iowa

Alpha Tau Delta 1, Secretary 2, Social Chairman 3, Vice-President 4, President 4; Basketball 1, 2, 3; Intramural Board 3; Sioux 3, 4; Jr. Class Vice-President.

"His hobby—the technique of romance."



DOROTHY CARRIG

A.B.

Sioux City, Iowa

Kappa Pi Alpha 2, 3, 4; President 4, Corresponding Secretary 4, Hall Chairman 3, Reporter 2; Orchesis 3, Secretary 4; "Sioux" 4; Inter-Sorority Council Secretary 4.

"The life of Pi Hall."



WINIFRED CHEELY

A.B.

Hornick, Iowa

Kappa Zeta Chi 2, 3, 4, Librarian 3; Collegiate Players 2, 3, Secretary-Treasurer 2; Manuscript 4; Pi Gamma Mu 4; W. A. A. 1, 2, 3, 4, Board 2, 3; Sweater Winner 3; Scarf Winner 2; Orchesis 3, 4, President 4; Collegian Reporter 1, 2, 3, 4; "Sioux" 3; Cheer Leader 3; International Relations Club 3, 4, Secretary 4.

"Pains of love be sweeter far Than all other pleasures are."



MAURICE CLARE

A.B.

Rangoon, Burma

Pre-Engineers 1, 2; Cosmopolitan Club 1, 2, 3, 4; F. T. A. 4; Intramural.

"He is 'Clare' from India."



ARTHUR CLAYTON

A.B.

Savannah, Missouri

Phi Sigma 1; International Relations 4; Pi Gamma Mu 3, 4, President 4.

"Why let women bother you, or anything for that matter?"



GLENNYS CORDERMAN

B.S.M.

Storm Lake, Iowa

Kappa Zeta Chi 2, 3, 4; Chapel Choir 3, 4; Vesper Choir 1, 2, Secretary.

"Her heart is not in her work."



CHYRL COSE

A.B.
Sioux City, Iowa
Iowa State Teachers College 1; F. T. A. 4; International Relations Club 4.
"Silence is golden—so they say."



S. WILLARD CUNNINGHAM

A.B.
Sioux City, Iowa
St. Paul Institute; Eta Sigma Phi 4; M. C. A. 2, 3, 4; Kappa Chi 3, 4, President 4.
"Look out girls, he's married."



DOREEN DALLAM

B.S.
Peru, Nebraska
Kappa Zeta Chi 3, 4, Treasurer 4; Eta Sigma Phi Secretary 4; Chapel Choir 2, 3, 4; Collegian Reporter 4; M. C. A. 1, 2, 3, 4, Program Chairman 2, Vice-President 3; Grace League 1, 2, 3, 4, Treasurer 2, President 3; W. A. A. 1, 2, 3, 4; F. T. A. 4.
"There's a difference between being smart and knowing the score."



JOSEPHINE DIXON

A.B.
Townsend, Montana
Pi Gamma Mu 4; Collegian Reporter 3, 4.
"We have missed her since mid-year."



EUGENE EMME

A.B.
Sioux City, Iowa
International Relations Club 4; F. T. A. 4; Psi Chi 3, 4; Pi Gamma Mu 4; Chapel Choir 1, 2, 3, 4, President 4; Male Quartet 2, 3; "Three Keys and a Chord" 4; Mixed Vocal Quartet; Senior Class President 4; Collegian Reporter 2, 3, 4; M. C. A. 1, 2, 3, 4, Social Chairman 3, Radio Director 4, President 4; Grace League 1, "Who's Who."
"He's paying for the book. We don't have to tell on him."

MAXINE ERICKSEN

B.S.M.
Rembrandt, Iowa
Kappa Zeta Chi 3, 4; Directress 4; Chapel Choir 3, 4; W. S. G. A. 4; Junior Hall President 4.
"We guess she's here, but we can't get a line on her."

E. DEAN FORBES

A.B.
Kingsley, Iowa
Sigma Theta Rho 1, 2, 3, 4, Vice-President 3; Football 1, 2, 3; Basketball 1; Junior Class President; Student Body Vice-President 4.
"Bashful—except on the gridiron."

FRANCES FORSBERG

A.B.
Sioux City, Iowa
Alpha Sigma 2, 3, 4, President 4, Secretary 3, Reporter 3, Directress 2; Biology Club President 3; Reporter 3, 4; Beta Beta Beta President 4, Reporter 3, 4; Yale-Harvard 3; Sweater Winner 4; Scarf Winner 3; Secretary-Treasurer of Senior Class 4; Collegian Reporter 3, 4; "Sioux" 4; Orchesis 3, 4, Vice-President 4.
"The backbone of the Ath's."

DONALD FRITZSCHE

B.S.M.
Primghar, Iowa
Phi Mu Alpha 4; Chapel Choir 1, 2, 3, 4.
"I celebrate myself and sing myself."

EVELYN GUELF

A.B.
Sioux City, Iowa
"Evelyn likes cold nights—for skating, of course."

R. DUANE HALFORD

A.B.
Jefferson, Iowa
"M" Club 2, 3, 4; Football 1, 2, 3, 4; Intramural; Vice-President Senior Class 4; Basketball 1, 2, 3, 4; "Bravest of the Brave" 3.
"Now that he has graduated, ah well, you can guess the rest."

RUTH HARRIS

B.S.M.
O'Neill, Nebraska
Kappa Zeta Chi 2, Chaplain 3, Critic 4; Chapel Choir 1, 2, 3, 4; Band 1; M. C. A. Broadcast 4; Grace League 1; Madrigal Singers 3, 4; M. C. A. Quartet 4; "Three Keys and a Chord" 4.
"Thorough in everything, even in laughter."

DALE HARTER

A.B.
Sioux City, Iowa
Collegiate Players 1, 2, 3, 4, Vice-President 2; International Relations Club 4; Pi Gamma Mu 3, 4, Vice-President 4; Alpha Psi Omega 3, 4, President 4; Pi Kappa Delta 1, 2, Vice-President 3, 4; Psi Chi 3, 4; Intramural; "Sioux" 2; M. C. A. 1, 2, 3, 4, President 3; Gospel Team 2, 4; Student Council 3; F. T. A. 4.
"Knowledge of all gathered in one mind."



FRANCES HAVERFIELD

A.B.
Sioux City, Iowa
University of Iowa; Kappa Pi Alpha 2, 4, Hall Chairman 2, Social Chairman 4, Reporter 2; Pep Club 1; Choir 1, 2, 4.
"Five foot one and full of fun."



JOYCE HELD

A.B.
Hinton, Iowa
Kappa Zeta Chi 2, 3, 4, President 4, Critic 4, Directress 3; Usher 2; Psychology Club 2; W. A. A. 1, 2; Senior Council Representative 4; Agora Board 1, 3.
"Personality Personified."



BETTY HUXTABLE

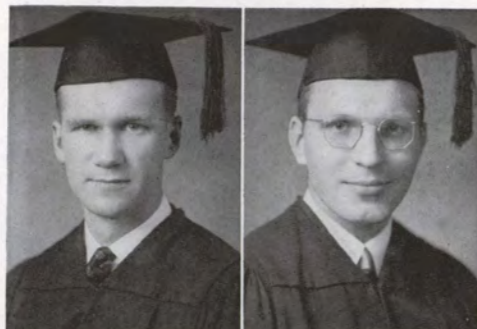
A.B.
Sioux City, Iowa
Manuscript Club 1, 2, 3, 4, Secretary 4; Sigma Tau Delta 3, 4, President 4; Collegian Reporter 3.
"A friend to the end."



KENNETH B. JOHNSON

A.B.
Sioux City, Iowa
Manuscript 3, 4, President 4; Intramural; Track 1; Collegian Reporter 3, 4, Editor 4; "Sioux" 3; M. C. A.; Student Council 4.

"A future illustrious poet and journalist."



GEORGE KOCH

B.S.
Corvalis, Montana
Sigma Theta Rho 1, 2, President 3; "M" Club 3, 4; Pre-Engineers' Club 1, Treasurer 2, Secretary 3, Vice-President 4, President 4; Sigma Pi Sigma 2, Vice-President 3, President 4.

"Being good never bothered him."



CLIFFORD LAMKIN

A.B.
Canton, South Dakota
Intramural 1, 2, 3, 4; International Relations Club 4.

"Enjoy life e'er it's fled—when you do you're a long time dead."



WILLIAM BRUCE LINDSAY

B.S.
Sioux City, Iowa
Pre-Engineers' Club 2, 3, 4, Treasurer 2; Sigma Pi Sigma 3, Vice-President 4; Senior Council Representative; Student Council 4.

"He prefers to be good, rather than to seem so."



JOHN LITECKY

A.B.
Minneapolis, Minnesota
Hibbing Junior College; International Relations Club, Chairman 4; "M" Club 3, 4.

"All great men are dying, and I don't feel so well myself."

LUCILLE LOCKE

A.B.
Primghar, Iowa
Drake University, Umph Girl 1; F. T. A. 4.

"Love is the sweetest thing."

LEWIS MAHOOD

A.B.
Sioux City, Iowa
Alpha Tau Delta 1, 2, 3, President 4; Collegiate Players 1, 2; Band 1; Collegian Reporter 1, 2, 3, 4.

"I'd like to buy him at my price and sell him at his."

MARY EILEEN MCBRIDE

A.B.
Harrisburg, South Dakota
Alpha Sigma 3, Treasurer 4; Manuscript 3, Librarian 4; Collegiate Players, President 4; Sigma Tau Delta 4; Alpha Psi Omega 4; Collegian Reporter 4; "Sioux" 4; M. C. A., Vice-President 4; Grace League 4; Religious Drama Group, President 4.

"A great asset to the dramatic department."

OLIVER MOGCK

B.M.
Kaylor, South Dakota
President of Conservatory 4; Student Council 4; Phi Mu Alpha 4; Chapel Choir 1, 2, 3, 4; Symphony Orchestra 1, 2, 3, 4; Band 1, 2, 3, 4.

"Lawrence Tibbett has nothing on him."



NORMA GAIL NEILSON

A.B.
Sioux City, Iowa
University of Minnesota; Kappa Zeta Chi, Usher 3, Critic 4, President 4.

"She is as likeable as she is lookable."



LEONARD P. NELSON

A.B.
Sioux City, Iowa
Alpha Tau Delta 1, 2.

"I should worry if only the good die young."



MARJORIE NELSON

A.B.
Sioux City, Iowa
Kappa Zeta Chi, Corresponding Secretary 3, Critic 4; Chapel Choir 2, 3, 4; Collegian Reporter 4; "Sioux" 3; W. A. A., Treasurer 3, President 4.

"There is no sport like a good sport."



MARTHA HELEN NELSON

B.S.M.
Emmetsburg, Iowa
Kappa Zeta Chi 2; Mu Phi Epsilon 3, 4; Chapel Choir 2, 3, 4; Symphony Orchestra 1, 2, 3, 4; String Quartet 3, 4.

"How weak a thing the heart of woman is."

RUTH OLSEN

A.B.
Beresford, South Dakota
Ishkoodah President; Agora Board 2; W. A. A. 1, 2; Collegiate Players 1, 2; Pi Kappa Delta, Secretary and Treasurer 2, 4, President 3; Pi Gamma Mu, Secretary 4; Student Council 3, 4; Collegian Reporter 4; "Sioux" 2, 3; M. C. A. Peace Chairman 2, 3; W. S. G. A. Secretary and Treasurer 2, President 4; Debate 1, 2; Health Queen 3; Miss Morningside Attendant 4; "Who's Who."

"A leader among women... how about men?"

LUCILLE PIPPETT

B.S.
Sioux City, Iowa
Kappa Zeta Chi, Usher 2, Corresponding Secretary 3; Psychology Club 3; Orchestris 3; Agora Treasurer 3.

"If at first you don't succeed, try another lipstick."

ROBERT W. RAE

A.B.
Sioux City, Iowa
Park College; Psi Chi 4; Pi Kappa Delta 3, 4; Kappa Chi, Secretary-Treasurer 4; Chapel Choir 4; Collegian Reporter 4; "Sioux" 4; M. C. A. 3, 4; Gospel Team 4; Debate 3, 4.

"There's nothing I like better than to talk."

RUTH RANCE

B.S.M.
Sioux City, Iowa

Kappa Pi Alpha 2, Chaplain 3, Corresponding Secretary 4, Vice-President 4; Mu Phi Epsilon Warden 4; Band 1; Chapel Choir 3, 4; Secretary Freshman Class; M. C. A. 3, 4; Grace League 1; Sioux Scalpers 3.

"Music is well said to be the speech of angels."



CATHARINE RICH

A.B.
Sioux City, Iowa

Nebraska State Teachers; Psi Chi, Vice-President 4; Pi Gamma Mu 4.

"We are glad to call her one of us."



CHARLOTTE ROBINSON

A.B.
Lake City, Iowa

Alpha Sigma 2, Recording Secretary 3, Vice-President 4, Corresponding Secretary 4; Collegiate Players 3, 4; W. A. A. Board 1, 2, 3, 4; Alpha Psi Omega 4; Vesper Choir 1; Yale-Harvard 1; Scarf Winner 2; Sweater Winner 3; Freshman Council Representative 1; F. T. A. 4; International Relations Club 4; Student Council 1.

"A girl after her own heart, but rather a man were after it."



IRENE SCHAAL

A.B.
Galva, Iowa

Collegiate Players 1; Chapel Choir 2, 3, 4; Band 1; M. C. A. 1, 2, 3, 4; Grace League, Social Director 4; Gospel Team 3, 4.

"A girl is always one of three things, hungry, thirsty, or both."



MAURICE SCHEIDER

A.B.
Sioux City, Iowa

Pre-Engineers 1, 2, 3, 4; Collegiate Players 4; Band 1; M. C. A. 1, 4.

"Wise from the top of his head up."



GEORGE SCHILLER

B.S.
Westmont, Illinois

Sigma Theta Rho 1, Sergeant-at-Arms 2, Secretary 2; "M" Club 3, 4, Secretary-Treasurer 4; Pre-Engineers' Club 1, 2, 3, 4; Football 1, 2, 3, 4; Intramural 1, 2, 3, 4; Basketball 1.

"I like to come to school, it's the staying that bothers me."



BETTY SCHUNCK

A.B.
Sioux City, Iowa

Kappa Pi Alpha, Chaplain 2, Hall Chairman 3, Treasurer 3, President 4; Ishkoodah, Secretary and Treasurer 1; Agora Treasurer 2, Vice-President 3; Orchesis 3; Phi Sigma Iota 3, President 4; Sophomore Council Representative; "Sioux" 3, Editor 4; Inter-Sorority Council 3, 4; Secretary and Treasurer Student Body 4; Student Council 2, 4; Miss Morningside Attendant 4.

"The world has angels all too few, and heaven is overflowing."



M. ALICE SCOTT

B.S.M.
Edgerton, Minnesota

Kappa Zeta Chi Chaplain 2; Ishkoodah, Program Chairman 1; Mu Phi Epsilon, Chaplain 3, Warden 4; Chapel Choir 1, 2, 3, 4; Girls' Trio 1, 2, 3; M. C. A. Quartet 1, 2, 3, 4; Madrigal Singers 2, 3, 4; Band 1; Secretary-Treasurer Sophomore Class; Collegian Reporter 4; W. S. C. A. Social Chairman 3, Freshman Hall President 4; "Who's Who."

"Sing a song of sunbeams."



GORDON SHELDALL

A.B.

Sioux City, Iowa

Alpha Tau Delta 1; Vesper Choir 2.

"So quiet we hardly know he's here."



GRAYSON SLOAN

B.S.M.

Sioux City, Iowa

Chapel Choir 1, 2, 3, 4; Band 1, 2, 3, 4; Brass Quartet 3; Male Quartet 3.

"A musician of merit."



STEPHEN SMILANICH

B.A.

Buhl, Minnesota

Virginia Junior College; Biology Club 3, 4; "M" Club 3, Vice-President 4; Football 3, 4; Intramural 3, 4.

"Students don't have to study agriculture to raise cain."



MAX STERN

B.A.

Sioux City, Iowa

Pre-Engineers' Club 1, 2, 3, 4, Secretary 3; Sigma Pi Sigma 3, Vice-President 4.

"What will Professor Coss do now?"



ALICE SWANSON

A.B.

Sioux City, Iowa

Kappa Pi Alpha, Sergeant-at-Arms 3, Vice-President 4, Treasurer 4; Collegian Reporter 4; "Sioux" 4.

"A sweet Pi."



LESTER VANDE BERG

A.B.

Hospers, Iowa

Northwestern Junior College; Cosmopolitan Club 3, 4; Vesper Choir 3, 4; Phi Mu Alpha 4; Manuscript Club 4.

"Never without something to do."



FRANCES E. WALKER

A.B.

South Sioux City, Nebraska

Vesper Choir 1, 2, 3, 4; Cosmopolitan Club 1, 2, 3, 4, Secretary 2, President 4.

"In love with music and art."



SHIRLEY WALLEN

A.B.

Sioux City, Iowa

Kappa Zeta Chi 2, 3, 4, Chaplain 4; W. A. A., Board 2, 3, 4, Secretary 3; Yale-Harvard 1, 2, 3; Sweater Winner 3; Scarf Winner 2.

"Friend-making and friend finding."



CLASS OF 1942

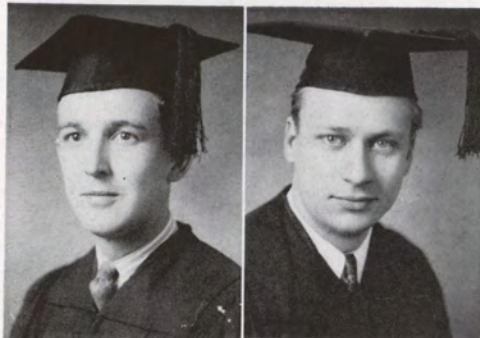
GARRETT WALLMAN

A.B.

Sioux City, Iowa

Alpha Tau Delta 1, 2, 3, 4, Vice-President 3, President 3; Vice-President, President of Class 2; Collegian Reporter 3; M. C. A. 3; Cheerleader 1, 2; Sioux Scalpers 3; Board of Control 3, 4; Inter-Fraternity Council 3; Student Body President 4; Student Council 4; "Who's Who."

"Pep Personified."



HAROLD A. WISSINK

A.B.

Hull, Iowa

Northwestern Junior College; Dramatic Club 4; Collegian Reporter 4; Manuscript Club 4; Associate Editor of Manuscript 4; Cosmopolitan Club 4.

"It's not what a man stands for, it's what he falls for."



CHARLES WERT

A.B.

Battle Creek, Iowa

Pre-Engineers 1, 2, Secretary 3, Vice-President 3, President 4; Sigma Pi Sigma, Secretary 3, President 4.

"A student in our midst."



LEONA WITZENBURG

B.S.M.

Pella, Iowa

Central College; Vesper Choir 2, 3, 4; Band 2, 3, 4; Symphony Orchestra 2, 3, 4; Flute Quartet 2, 3, 4.

"Another nice Conservatory student."



MILDRED WIKERT

A.B.

Graettinger, Iowa

Kappa Zeta Chi 2, Directress 3, Secretary 3, Vice-President 4; Ishkoodah, Secretary-Treasurer; Collegiate Players 1, 2, 3, 4; W. A. A. 1, 2, 3, Secretary 4; Eta Sigma Phi 3, Vice-President 4; Secretary of Class 3; "Sioux" 2; M. C. A., Y. W. C. A. Representative 4; May Queen 1; Agora Secretary 2, President 4; W. S. G. A., Sophomore Hall President; Sioux Scalpers 3; Student Council 4; Miss Morningside 4; "Who's Who."

"One of these people you want to have around."



ANNA ZENKOVICH

A.B.

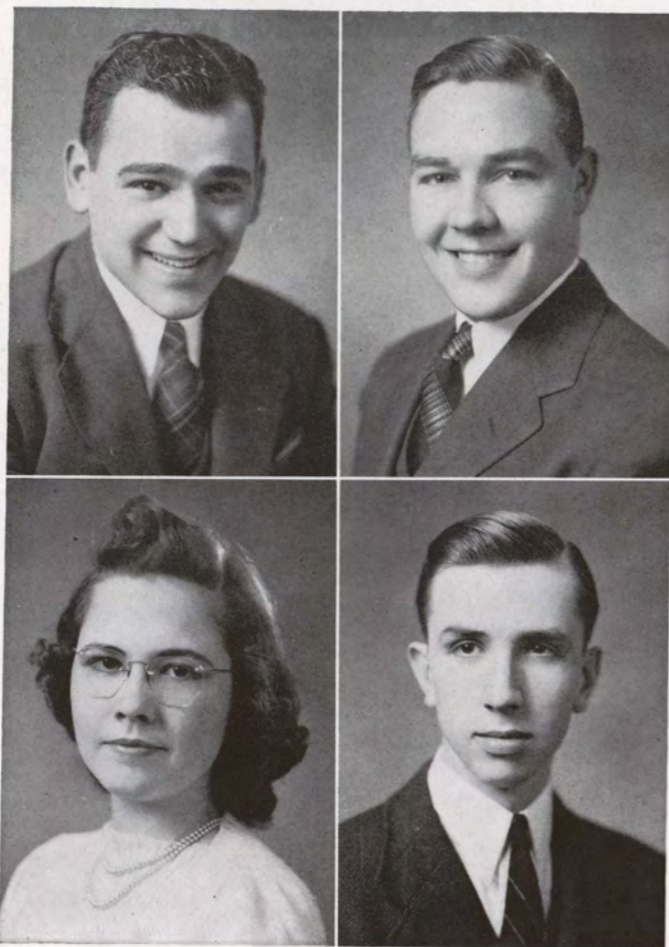
Sioux City, Iowa

Training School for Christian Workers; Kappa Chi, 4.

"Capable and efficient."



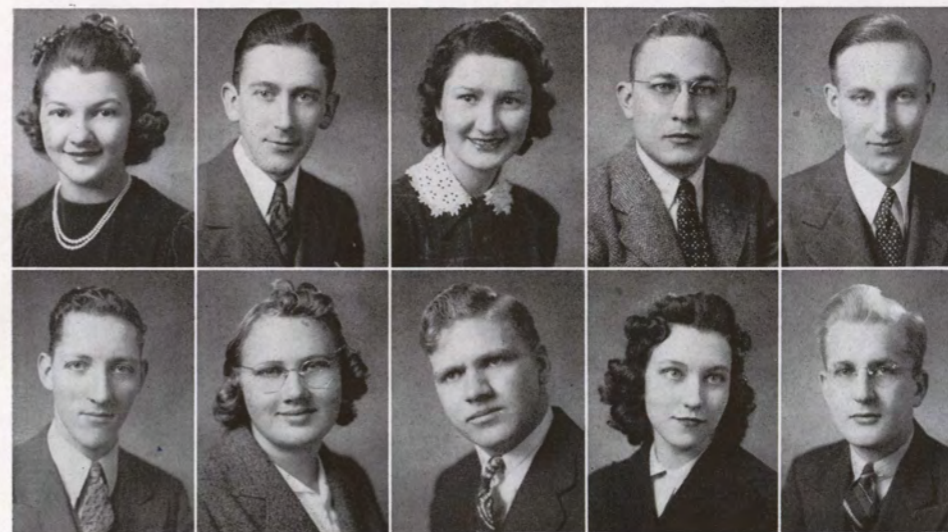
JUNIOR OFFICERS



PresidentRobert Reese
 Vice-PresidentGlen Thompson
 Secretary-TreasurerGeraldine Booth
 Student Council Representative.....Stanley Munger



| | | | | |
|--|--|--|---|--|
| Glenn Adcock <i>"What I can't do, can't be done."</i> | Phyllis Baker <i>Seemingly always happy.</i> | Donald Ballentine <i>"I'm not curious, I just like to know things."</i> | Barbara Barry <i>Sweetest gal in town.</i> | Marion Benton <i>Marion's Bent-on get- ting some place.</i> |
| Margaret Berg <i>As harmless as she looks.</i> | Marie Bergquist <i>Merry is Marie.</i> | James Bolton <i>"I think I need a chaperone."</i> | Geraldine Booth <i>She knows what she thinks.</i> | Betty Bootjer <i>Determination means success.</i> |
| Kathryn Brown <i>Still the same sweet Kate.</i> | Robert Caine <i>The good die young— be careful.</i> | Margie Carlson <i>She has a grabity for boys.</i> | Vernon Castle <i>"Shall I go on, or have I said enough?"</i> | Bryce Clayton <i>Oh, this learning— what a thing it is!</i> |
| Dayle Crabb <i>"It's O-Kay with me."</i> | Florence Dahl <i>As noisy as a mouse.</i> | Bernard Feikema <i>A perfect gentleman, and he plays football, too.</i> | Maxine Foster <i>A woman of good taste.</i> | Charles Gandek <i>Not a ladies' man, but a lady's man.</i> |





| | | | | |
|--|---|--|--|--|
| Homer Garretson <i>He certainly fiddles around.</i> | Dorothy Gartner <i>Like me, like Cliff.</i> | Earl Goodenow <i>He favors Oklahoma's products.</i> | Raymond Gusteson <i>He is a jolly-good Tau-Delt.</i> | Ardis Hall <i>The better you know her, the better you like her.</i> |
| Doris Hall <i>Duty before pleasure.</i> | Robert Hempstead <i>He'll engineer his way through life.</i> | Muriel Hiler <i>Sweet and sincere, though she is very quiet about it.</i> | Dureth Helen Hitchcock <i>How weak a thing the heart of woman is.</i> | Betty Hoefler <i>"All the world's a stage and to me it's a circus."</i> |
| Jack Holdcroft <i>A sincere student.</i> | Robert Jackson <i>"Of all my dad's relation I like myself the best."</i> | Helen Johnson <i>Proof that beauties have brains.</i> | Francis Jones <i>Here he comes, girls.</i> | Jean Jones <i>"May I never love again."</i> |
| Louretta King <i>Sweet and petite.</i> | Ruth Kingsbury <i>Her smile is for everyone, but her heart is for Eddie.</i> | John Kolp <i>The world means something to the capable.</i> | Anthony Kooiker <i>He certainly can tickle the ivories.</i> | LeRoy Kuhlmann <i>"Why am I like this?"</i> |



| | | | | |
|---|--|---|---|---|
| Romain Lamkin <i>A coupe, a guy, and a girl.</i> | Joe Lease <i>He prefers red-heads.</i> | Donovan Leopold <i>Loves 'em and leaves 'em.</i> | Robert Lowry <i>"I favor a five day week-end."</i> | Ted Macur <i>Handsome is as handsome does.</i> |
| Kathryn Madison <i>Few things are impossible to diligence and skill.</i> | Lucille Mathena <i>"It's Wert a lot to me!"</i> | Roy Michaud <i>He and life get along.</i> | Guylette Moise <i>Silent is thought.</i> | Stanley Munger <i>Suave.</i> |
| Charles Osborn <i>So much is man worth as he esteems himself.</i> | Mildred Pfeiffer <i>She probably could tell plenty—but she isn't talking.</i> | Dorothy Rannells <i>What glamorous eyes!</i> | Robert Reese <i>He can because he thinks he can.</i> | Clarice Rohweder <i>Everybody likes her, especially Wally.</i> |
| Fern Roland <i>You can't pull the wool over her eyes.</i> | Betty Lou Saunderson <i>A sweet attractive kind of grace.</i> | Kathleen Schatz <i>The Ath's claim her.</i> | Kurt Sinnreich <i>A foreigner who learns fast.</i> | William Smith <i>A fellow with possibilities.</i> |



SOPHOMORE OFFICERS



PresidentJames Wallen
 Vice-PresidentHelen Anderson
 Secretary-TreasurerHarriett Swanson
 Student Council Representative.....Wilson Reynolds



James Adams Freda Agostine Helen Anderson Dorothy Bell Robert Bennett
 Francis Brockman Dorothy Brown Evelyn Capener Glenn Clark Doris Coe

Florence Coss Ruth Cowling Mary Cruikshank Fred Daniels John DeGarmo Dorothy Ann DeVries
 William Dimsdale Gwendolyn Downey Mary Lou Fairchild James Forrester Lucille Gehrt Joel Geister



CLASS OF 1944

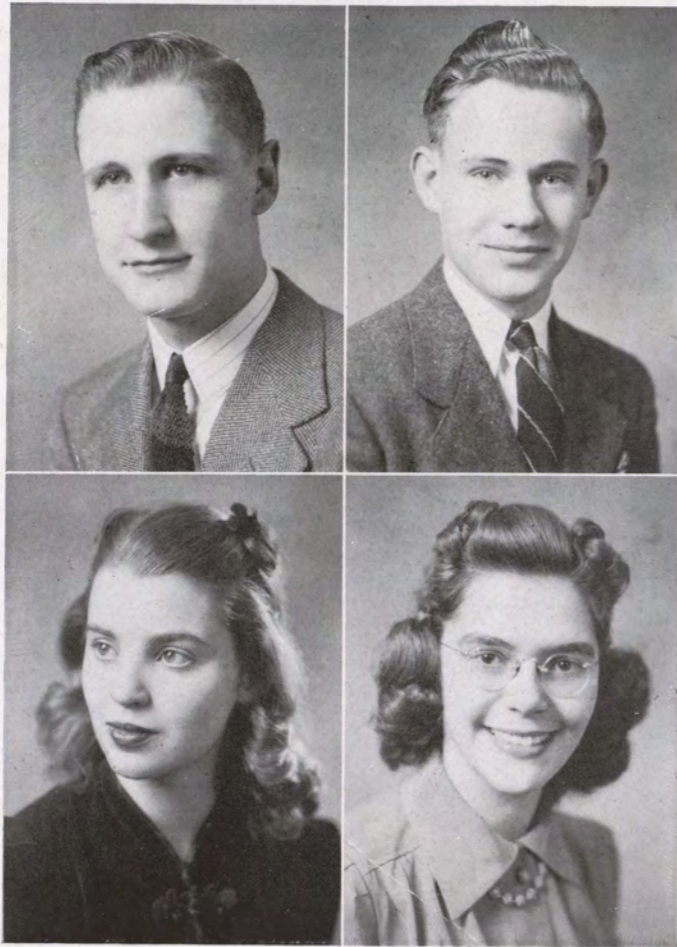


Ivan Gosso Joseph Haffits Robert Hicks Alice Jacobs Francis Kingsbury Jean Laffoon
James Leachman Dorothy Long Louise Madison John Maynard Yvonne Petrich Lowell Ralston

Leonard Rehder Wilson Reynolds Mariellen Rifembark Dale Robar Marietta Seaman Margaret Slowey
Vera Smith Harriett Swanson Marjorie Swisher Eleanor Thorpe Robert Wagstaff James Wallen



FRESHMAN OFFICERS



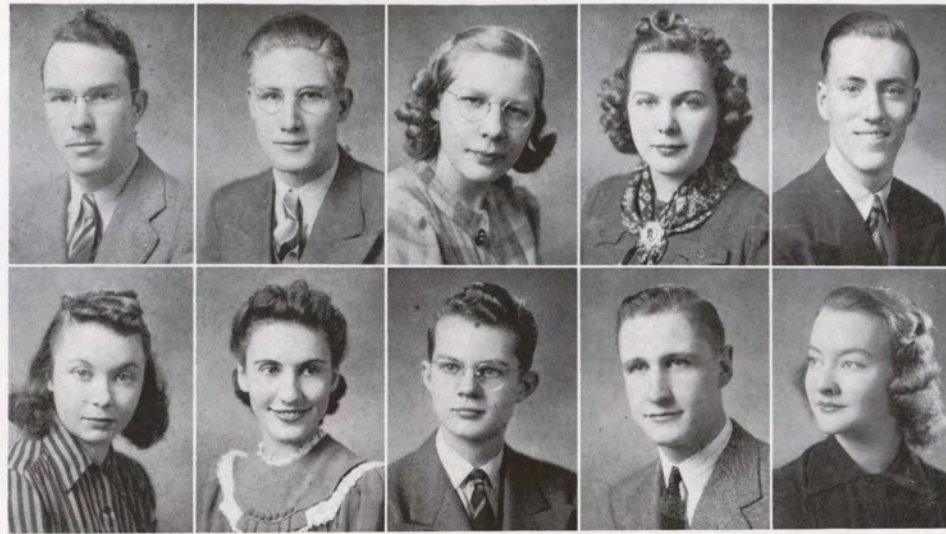
PresidentCharles Durr
 Vice-PresidentDonald Nelson
 Secretary-TreasurerBetty Boyd
 Student Council Representative.....Ferne Dunn



Theodore Adams Helen Ashby Juanita Bates Robert Bell Carlyne Biedenfeld
 Harold Bomgars Betty Boyd Edwin Breaw Frances Bridge Richard Brown

Luella Bruhn Faith Buchner Bette Buell Bonnie Burr Ronald Bush
 Eva Carlsson Betty Lew Carter Betty Christensen Vernice Christiansen Eleanor Click





William Cosman John Culbertson Gertrude Curtis Lubertha DeGraaf Reginald DeHaan

Kathryn Deirup Ruth Denny Stephen DeVries Charles Dirr Velta Jean Dixon

Dale Dunn Ferne Dunn Janet Evans Faith Faul Hope Faul

Doris Fritzsche Orin Goodrich Mary Ann Gray Keith Groskreutz Evelyn Hagberg



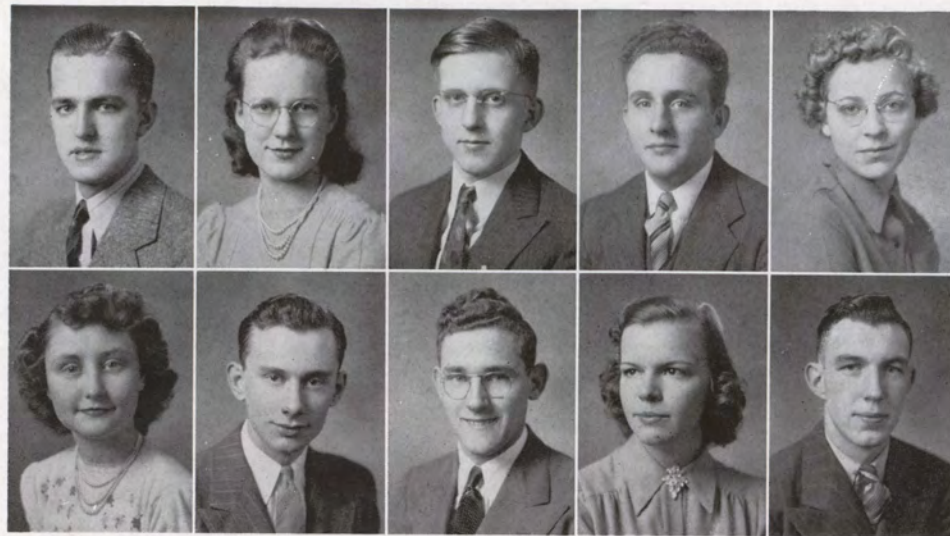
Betty Lou Hale Duncan Harper Edith Harrison Mary Jane Hasbrook Clarice Hawthorn

Merton Haynes Gladys Hays Carol Hedeem Mary Louise Held Robert Held

Roberta Held Lois Helm Douglas Hempstead Donna Hoefler Ruth Hofmann

Corinne Imes Lorraine Iverson Elinor Jacobson Thelma Johnson Lamar Jones





Robert Jones Harriett Kirby Lyle Knudsen Warren Kuhler Marvel Lamb
 Helen Latch Duane Lindsey Ervin Loewenberg Evelyn Madsen Norman Mathers

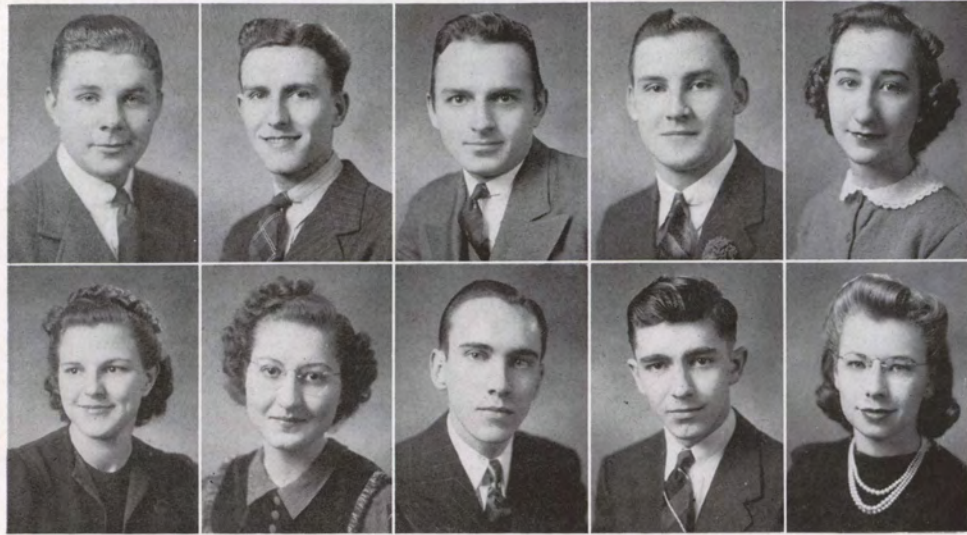
Inez McKillip Emogene Miller Muriel Miller Stella Miller Adris Mitchell
 Betty Mitchell Lucille Mushkin Willo Jean Niemeyer Donald Nelson Winnifred Osbey



Belva Osia Patricia Parker Mary Patterson Arlene Perry James Prechel
 Cecil Rannells Rex Reed Joyce Roadman Lois Roorda Kenneth Ruby

George Saunderson Catherine Sawin Roy Schellenger Floyd Schleusener Kathleen Schnoor
 Lois Seaman Lois Sernstrom Josephine Shawver Helen Shoemaker Laurin Snyder





Duane Springer Raymond Starch Leonard Stiles James Strait Bonnie Stribley
 Mary Jane Terry Melva Tiemens Meredith VanPelt Wilfred Wachter Marvel Wadsley

Ruth Walker Frances Washburn Lawrence Wehmeyer Floyd Wennersten Beverly Werden
 Lucille Werder Ruth White Betty Wickland Dorothy Williams Wendell Witt



Second Semester Students

FRESHMEN

Eva Carlsson.....Santiago, Chile
 Vernice ChristiansenHawarden
 Bonnie MurraySioux City
 Wilson PersingerSioux City
 Jeanne RagerSioux City
 Joe RinglandSioux City
 Richard RockwellSioux City
 Joseph RosenblumSioux City
 Milton RosenblumSioux City
 Mary Frances Siedschlag.....Sioux City
 Mary Jane Terry.....Columbus, Nebraska
 Paul WoskoffSmithland

SOPHOMORES

Ardelle CapellenDows
 Karen GilmanSioux City
 John RobertsSioux City

JUNIORS

Jack Holdcroft.....Lake View
 Tino Konopisos.....Sioux City
 Rita Reed.....South Sioux City, Nebraska
 Mary Jane Winch.....George

SENIOR

Charles B. Clayton.....Sioux City

FAMILIAR FACES



ACTIVITIES



Student Council



Wallman, Forbes, Schunck, Davenport.

Another year has passed by and Morningside has made one more step toward a bigger and better college.

It is with regret that I shall depart this June. The enthusiastic cooperation of the student council and student body this year has made student activities a great success. As President of the student body, it has been very enjoyable working with such cooperative students and faculty.

—Garry Wallman.

I wish to express my sincere appreciation to every student and organization for the splendid cooperation which the student government has received during the past semester.

No student government can be effective if its every action is censured and restricted by the administration of the school; fortunately the student council of Morningside College has been given complete freedom of action for which every member of the council is deeply grateful.

—Fred Davenport.

Co-Presidents.....Garrett Wallman, Fred Davenport

Vice-PresidentDean Forbes

Secretary-TreasurerBetty Schunck

Kappa Pi Alpha

OFFICERS

| | <i>First Semester</i> | <i>Second Semester</i> |
|------------------------------|-----------------------|------------------------|
| President..... | Betty Schunck | Dorothy Carrigg |
| Vice-President..... | Alice Swanson | Ruth Rance |
| Recording Secretary..... | Dorothy Carrigg | Dorothy Rannells |
| Corresponding Secretary..... | Ruth Rance | Doris Brown |
| Treasurer..... | Doris Brown | Alice Swanson |
| Chaplain..... | Betty Bootjer | Betty Bootjer |
| Critic..... | Geraldine Booth | Dorothy Long |
| Sergeant-at-Arms..... | Marie Bergquist | Clarice Rohweder |
| Librarian..... | Clarice Rohweder | Helen Johnson |
| Hall Chairman..... | Helen Johnson | Florence Coss |
| Social Chairman..... | Frances Haverfield | Geraldine Booth |
| Reporter..... | Dorothy Rannells | Frances Haverfield |

Faculty Adviser: Harriet P. Wirick

MEMBERS

Seniors

Doris Brown
 Dorothy Carrigg
 Frances Haverfield
 Ruth Rance
 Betty Schunck
 Alice Swanson

Juniors

Marie Bergquist
 Geraldine Booth
 Betty Bootjer
 Helen Johnson
 Laretta King
 Dorothy Rannells
 Clarice Rohweder

Sophomores

Doris Coe
 Florence Coss
 Ruth Cowling
 Mary Cruikshank
 Dorothy Long
 Vera Smith
 Dorothy Ann De Vries
 Marjorie Swisher



Top Row—Bergquist, Booth, Bootjer, Brown, Carrigg.
 Coe, Coss, Cowling, Cruikshank, Haverfield.
 Johnson, King, Long, Rance, Rannells.
 Bottom Row—Swisher, Rohweder, Schunck, Smith, Swanson, DeVries.



Alpha Sigma



Top Row—Bock, Carlson, Downey, Forsberg.
 Gehrt, Hiler, Jones, K. Madison, L. Madison.
 Mathena, McBride, Mitchell, Pfeiffer, Robinson.
 Bottom Row—Roland, Schatz, Seaman, Thorngreen, Welding.

OFFICERS

| | <i>First Semester</i> | <i>Second Semester</i> |
|------------------------------|-----------------------|------------------------|
| President..... | Frances Forsberg | Frances Forsberg |
| Vice-President..... | Charlotte Robinson | Kathleen Schatz |
| Recording Secretary..... | Kathryn Madison | Ferne Roland |
| Corresponding Secretary..... | Margie Carlson | Charlotte Robinson |
| Treasurer..... | Mary Eileen McBride | Gwendolyn Downey |
| Reporter..... | Betty Lou Welding | Phyllis Thorngreen |
| Chaplain..... | Kathleen Schatz | Dorothy Luchsinger |
| Pianist..... | Dorothy Luchsinger | Margie Carlson |
| Usher..... | Jean Jones | Betty Lou Welding |
| Critic..... | Ferne Roland | Kathryn Madison |
| Historian..... | Margie Carlson | Lucille Mathena |

Faculty Adviser: Miss Ruth McDonald

MEMBERS

Seniors

Frances Forsberg
 Lucille Mathena
 Mary Eileen McBride
 Charlotte Robinson

Juniors

Marg Bock
 Margie Carlson

Muriel Hiler

Jean Jones
 Dorothy Luchsinger
 Kathryn Madison
 Mildred Pfeiffer
 Ferne Roland
 Kathleen Schatz
 Phyllis Thorngreen
 Betty Lou Welding

Sophomores

Gwendolyn Downey
 Lucille Gehrt
 Louise Madison
 Adris Mitchell
 Marietta Seaman



Kappa Zeta Chi

OFFICERS

| | <i>First Semester</i> | <i>Second Semester</i> |
|------------------------------|-----------------------|------------------------|
| President..... | Joyce Held | Norma Neilson |
| Vice-President..... | Mildred Wikert | Mildred Wikert |
| Recording Secretary..... | Lauree Wood | Barbara Barry |
| Corresponding Secretary..... | Betty Lou Saunderson | Lauree Wood |
| Directress (1)..... | Edythe Albert | Joyce Held |
| (2)..... | LaVonne Wertz | Ruth Harris |
| Chaplain..... | Shirley Wallen | Edythe Albert |
| Ushers (1)..... | Kathryn Brown | Mariellen Rifembark |
| (2)..... | Helen Weaver | Jean Runge |
| Critics (1)..... | Marjorie Nelson | Maxine Ericksen |
| (2)..... | Norma Neilson | Ruth Kingsbury |
| Librarian..... | Mary Louise Barrett | Betty Lou Saunderson |
| Treasurer..... | Doreen Dallam | Doreen Dallam |
| Reporter..... | Ruth Kingsbury | Ruth Kingsbury |

Faculty Adviser: Hazel Carter

MEMBERS

- | | | |
|------------------------|-----------------|----------------------|
| <i>Seniors</i> | Norma Neilson | Betty Lou Saunderson |
| Edythe Albert | Lucille Pippett | Ella Jean Waddell |
| Mary Louise Barrett | Shirley Wallen | Helen Weaver |
| Winifred Cheeley | Mildred Wikert | LaVonne Wertz |
| Glennys Corderman | | Lauree Wood |
| Doreen Dallam | <i>Juniors</i> | |
| Maxine Ericksen | Barbara Barry | <i>Sophomores</i> |
| Ruth Harris | Kathryn Brown | Helen Anderson |
| Joyce Held | Janice Collier | Dorothy Brown |
| Dureth Helen Hitchcock | Maxine Foster | Harriett Swanson |
| Marjorie Nelson | Betty Hoefer | Mariellen Rifembark |
| | Ruth Kingsbury | Jean Runge |



Top Row—Albert, Anderson, Barrett, Barry, D. Brown.
 K. Brown, Cheeley, Corderman, Dallam, Ericksen.
 Foster, Harris, Held, Hitchcock, Hoefer.
 Kingsbury, Nelson, Neilson, Pippett, Rifembark.
 Bottom Row—Saunderson, Swanson, Waddell, Wallen, Weaver, Wikert.



Alpha Tau Delta

OFFICERS

| | <i>First Semester</i> | <i>Second Semester</i> |
|-----------------------|-----------------------|------------------------|
| President..... | Lewis Mahood | Ralph Brown |
| Vice-President..... | Ralph Brown | John Kolp |
| Secretary..... | Ray Gusteson | Ray Gusteson |
| Treasurer..... | John Kolp | Jim Bolton |
| Sergeant-at-Arms..... | Earl Goodenow | Roy Schellenger |
| Chaplain..... | Guy Nettleton | George Saunderson |
| Pledgemaster..... | Don Leopold | Earl Goodenow |
| Social Chairman..... | Bob Bennett | Steve De Vries |
| House Chairman..... | Jim Bolton | Bob Bennett |

MEMBERS

Seniors

Ralph Brown
Lewis Mahood
Garry Wallman

John Kolp
Don Leopold
Freddie Wellmerling

Leonard Rehder
Wilson Reynolds
Dale Robar

Roy Schellenger
Laurin Snyder

Juniors

Bob Bennett
Jim Bolton
Earl Goodenow
Ray Gusteson
Bob Hempstead
Gene Kennedy

Sophomores

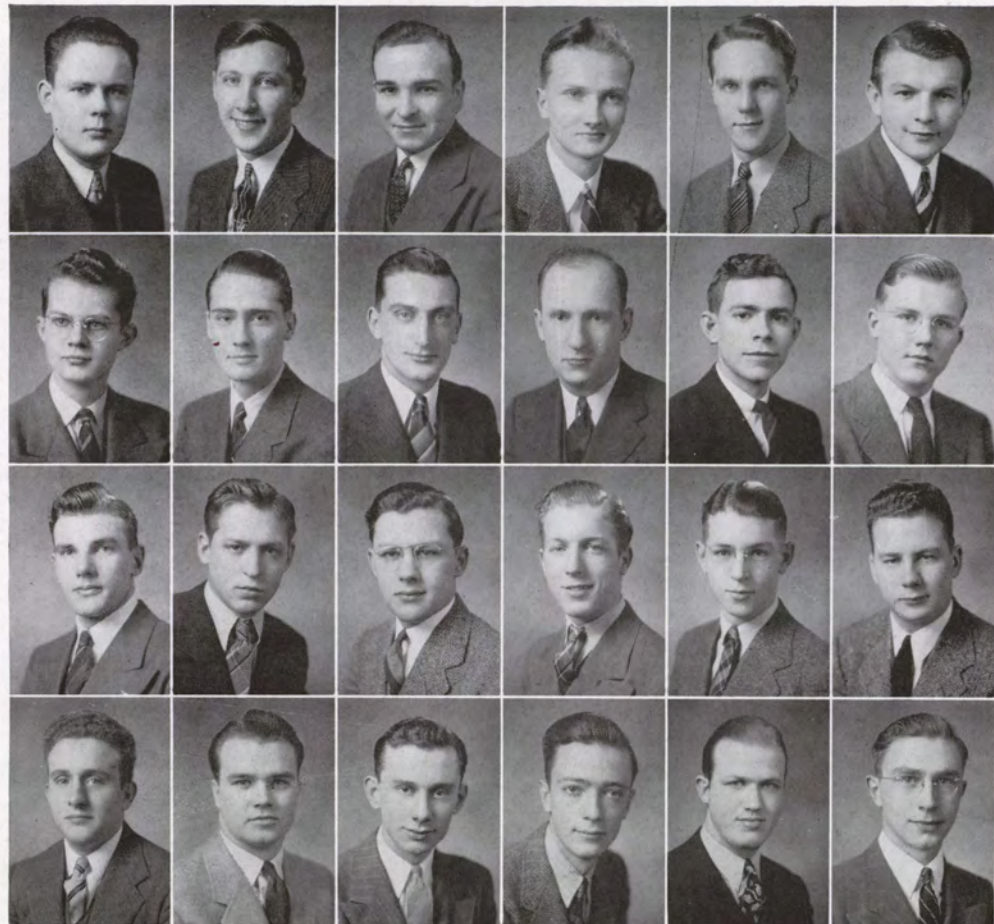
Jim Adams
Bob Hicks
Francis Kingsbury
John Maynard
Guy Nettleton
Don Plagman

Freshmen

Ted Adams
Everett Barr
Harold Bomgars
Steve De Vries
Duncan Harper
Bob Held
Lamar Jones
George Saunderson

Pledges

Joel Geister
Doug Hempstead
Warren Kuhler
Duane Lindsey
Charles Obye
Bob Postin
Floyd Schleusener
Dick Sullivan



Top Row—J. Adams, T. Adams, Bennett, Bolton, Bomgars, Brown.
DeVries, Geister, Goodenow, Gusteson, Harper, D. Hempstead.
R. Hempstead, Held, Hicks, Jones, Kingsbury, Kolp.
Kuhler, Leopold, Lindsey, Mahood, Maynard, Rehder.
Bottom Row—Reynolds, Robar, Saunderson, Schellenger, Schleusener, Snyder, Wallman.



Phi Sigma

OFFICERS

| | <i>First Term</i> | <i>Second Term</i> | <i>Third Term</i> |
|---------------------|-------------------|--------------------|-------------------|
| President..... | Charles Sheridan | Bernie Feikema | Bob Reese |
| Vice-President..... | Albert Haenfler | Joe Lease | Bill Pepper |
| Secretary..... | Gerald McCoy | Bob Reese | Paul Smith |
| Treasurer..... | Glen Thompson | Glen Thompson | Glen Thompson |

MEMBERS

Seniors

Charles Curry
Elwood Hetland

Juniors

Bernie Feikema
Albert Haenfler
Joe Lease
Bob Reese

Freshmen

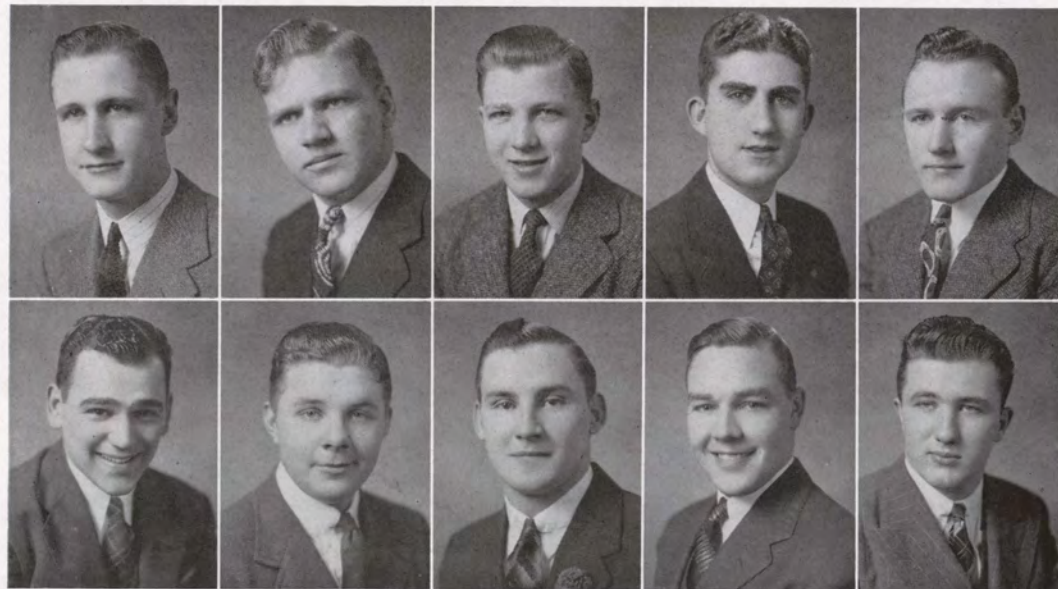
Elmendo Rossi
Charles Sheridan
Glen Thompson
Donald Widler

Sophomores

Harold Deiters
Gerald McCoy
Orlan Ott
Orval Spiry

Freshmen

Lowell Buchmiller
Charles H. Dirr
Orin Goodrich
Gerald Haenfler
Joseph Haffits
Robert Kipper
Norman Mathers
Bill Pepper
Paul Smith
Duane Springer
Jim Strait



Top Row—Dirr, Feikema, Goodrich, Haffits, Lease.
Bottom Row—Reese, Springer, Strait, Thompson, Widler.

Sigma Theta Rho

OFFICERS

| | <i>First Semester</i> | <i>Second Semester</i> |
|-----------------------|-----------------------|------------------------|
| President..... | Francis Ames | Dayrle Crabb |
| Vice-President..... | Lowell Ralston | Robert Ferris |
| Treasurer..... | Dayrle Crabb | Lowell Ralston |
| Secretary..... | Bill Murray | Howard Libeck |
| Chaplain..... | Philip Sandberg | Francis Ames |
| Sergeant-at-Arms..... | Edwin Osborn | Clair Hunter |

MEMBERS

Seniors

Francis Ames
Myles Gates

Juniors

Marion Benton
Dayrle Crabb

Sophomores

Robert Moore
Bill Murray
Edwin Osborn
Lowell Ralston
Philip Sandberg
Leonard Styles

Freshmen

Robert Ferris
Clair Hunter
Howard Libeck
Wayne Stevens

Top Row—Starch, Parsons, Murray, Gates, Chambers.
Middle Row—Ralston, Hunter, Forbes, Crabb.
Bottom Row—Ferris, Osborn, Benton, Woskoff, Nutt.



Inter-Sorority Council

Members of the inter-sorority council consist of the president and two appointed by her to represent each sorority. A secretary is chosen to serve for the year, each sorority having one of its representatives act in this position every third year. The council functions, with the advise and guidance of Mrs. Winifred G. Felton, acting dean of women, only when cooperative measures are necessary.

First Semester

ALPHA SIGMA

Frances Forsberg
Mary Eileen McBride
Kathryn Madison

KAPPA ZETA CHI

Joyce Held
Doreen Dallam
Lauree Wood

KAPPA PI ALPHA

Betty Schunck
Dorothy Carrigg
Betty Bootjer

Second Semester

ALPHA SIGMA

Frances Forsberg
Mary Eileen McBride
Kathryn Madison

KAPPA ZETA CHI

Norma Neilsen
Doreen Dallam
Lauree Wood

KAPPA PI ALPHA

Dorothy Carrigg
Betty Schunck
Betty Bootjer

Inter-Fraternity Council

With Dr. M. E. Graber, Dean of Men, as faculty adviser, the inter-fraternity council has charge of pledging activities and solving problems of the fraternities. In the past years, it has served chiefly in an advisory capacity. Members include two from each fraternity, with a president and secretary elected with the group by the members.

OFFICERS

PresidentBernard Feikema
SecretaryMyles Gates

REPRESENTATIVES

PHI SIGMA

Bernard Feikema
Charles Sheridan

SIGMA THETA RHO

Myles Gates
Francis Ames

ALPHA TAU DELTA

Ralph Brown
Lewis Mahood



Agora

Agora, an association to which all girls in Morningside College belong, was founded in 1912 by Agnes Ferguson. During the twenty-nine years of its existence, it has been active in its purpose to promote good fellowship and closer friendships among the girls in school. The Campus-Sister Movement, the Spring Mother-Daughter Banquet, and occasional teas are highlights in the program of Agora. This year a Carnival-Dance was sponsored by Agora.

Agora operates through a representative board elected by popular vote of all girls in school. The following are officers this year: Mildred Wikert, President; Ruth Kingsbury, Vice-President; Helen Anderson, Treasurer; Florence Coss, Secretary; Doris Brown, Senior Representative; Kathryn Madison, Junior Representative; Lucille Gehrt, Sophomore Representative; Janet Evans (first semester), Roberta Held (second semester), Freshman Representatives.

Top Row—Wikert, Kingsbury, Anderson, Coss.
Bottom Row—Brown, Madison, Gehrt, Held, Evans.



W. S. G. A.

The Women's Self Governing Association is the board elected each year by the residents of the women's dormitory to act as the governing body. Disciplinary measures are settled through the Honor Court, composed of the board members and Mrs. Winifred G. Felton, social director of the dormitory.

During the year W. S. G. A. sponsors such events as formal dinner-dances, Sunday musicales and pajama parties. They also plan special parties, programs and dinners—Hallowe'en Party, Christmas Tree Party, Freshman Serenade. This year the group has had as one of their special projects the furnishing of a recreation room.

The officers for the past year have been: President, Ruth Olsen; Vice-President, Edythe Albert; Secretary, Mary Cruikshank; Social Chairman, Betty Hoefler; Senior Hall Chairman, Mildred Wikert; Junior Hall Chairman, Edythe Albert; Sophomore Hall Chairman, Maxine Ericksen; Freshman Hall Chairman, Alice Scott; Social Director, Winifred G. Felton.

Top—Olsen, Albert, Ericksen, Felton.
Bottom—Wikert, Scott, Cruikshank, Hoefler.



Board of Control

All student publications are under the jurisdiction of the Board of Control which consists of ten members—five faculty representatives and five students. Appointments for the newspaper, the yearbook, and all other publications are under its supervision. Its main purpose is for guidance and advice in matters of publication, and censors publications only at the request of the student council.

The Chairman of the board is Professor Mirah Mills. Other faculty members are: H. F. Kanthlener, Ira J. Gwinn, Mrs. Elsy Tashe Sater, and T. N. McClure. The student members are Garry Wallman, senior; Geraldine Booth, junior; Gwendolyn Downey, sophomore; Bob Tracy, freshman; and Raymond Gusteson, representative at large.

Top—Wallman, Booth, Downey, Gusteson.
Bottom—Mills, Kanthlener, McClure, Sater, Gwinn.



Sixty-four

Ishkoodah

Ishkoodah, which is the Indian word for "shooting star," is the name of the organization to which all the freshman girls of Morningside belong. Meetings are held twice a month in the Union Room with Mrs. Paul Johnson as the adviser.

The new spirit and enthusiasm of the girls was evidenced this year by the active participation in all Ishkoodah activities, of which the most outstanding were the weiner roast, a float in the Homecoming parade, and two formal dances. Other features of interest were the All Girl Orchestra and Road Show, Heart Sister Movement, and sewing for Bundles for Britain.

Officers for the first semester were: Willo Jean Neimeyer, President; Betty Lew Carter, Vice-President; Betty Lou Hale, Secretary-Treasurer; and Beverly Werden, Program Chairman. Those who served during the second semester were: Ferne Dunn, President; Winnifred Osbey, Vice-President; Evelyn Madsen, Secretary-Treasurer; and Donna Hoefler, Sergeant-at-Arms.

Neimeyer

Dunn



Sixty-five

The Sioux

The work of compiling the material for the Sioux is under the direction of the Editor-in-Chief. The staff assists her by preparing the section for which they are responsible. The Business Manager has charge of the advertising and the financial arrangements. Both the Editor and the Business Manager are elected by the Board of Control.

Top Row—Brown, Schunck, Booth, Downey, Saunderson.
 Middle—Hoefler, Carrigg, Forsberg, Barrett, Johnson.
 Bottom Row—Rae, Schatz, McBride, Swanson, Widler.



The Collegian Reporter

The Collegian Reporter, campus newspaper of the college, completed another successful year featuring a different style of make-up which included open columns and balanced heads. In addition to doing the regular work, the editors attended the national collegiate press convention in Detroit and the staff sponsored a style show at the Orpheum Theatre.

THE EDITORIAL STAFF

Editor.....Kenneth Johnson
 Managing Editor.....Leonard Stiles
 Business Manager.....Ted Macur
 News Editor.....Harold Wissink
 Sports Editor.....Dick Sullivan
 Society Editor.....Alice Swanson
 Fashion Editor.....Carol Goltz
 Dramatics Editor.....Mary McBride
 Exchange Editor.....Winifred Cheeley
 Circulation Editor.....Francis Kingsbury

FEATURE WRITERS

Minnie Karcher, Lauree Wood, Bob Tracy, Marjorie Foster, Doris Brown, Hope Faul, Don Ballentine, Bart Lubbers, John Bean, Phyllis Thorngreen, Inez McKillip.

NEWSWRITERS

Vic Alvey, Gene Emme, Frances Forsberg, Stanley Anderson, Marjorie Carlson, Alice Scott, Mary Louise Barrett, Bob Rae, Ruth Kingsbury, Ruth Olsen, Mary Patterson, Kurt Sinnreich, Velta Jean Dixon, Betty Boyd, Kathryn Deirup, Marjorie Nelson, Jeanne Rager, Mary Frances Siedschlag, Ruth Walker, Harold Bachert.



Left to Right—McBride, Swanson, Wissink, Goltz, Cheeley, Stiles, Johnson, Kingsbury. —S. C. Tribune.

Beta Beta Beta



Forsberg

Beta Beta Beta, the national honorary fraternity for students of the biological science, was established to encourage scholarly attainment in biology and thus reserves its membership to those who achieve high academic records and who have a special interest in the subject. It maintains a three-fold program: namely, stimulation of sound scholarship; dissemination of scientific knowledge; and promotion of biological research.

Officers presiding over Tau Chapter this year were: Frances Forsberg, president; Dayle Crabb, vice president; Keith Arnold, secretary-treasurer; and Dr. T. C. Stephens is faculty adviser.

Eta Sigma Phi



Back Row—Bergquist, Thorpe, Karcher, Murray, Fischer.
Middle—Wikert, Madison, Barry, Hitchcock, Dimmitt.
Seated—Cunningham, Caine, Smith.

Eta Sigma Phi is the national honor fraternity for students of Latin and Greek. Our local chapter, Nu, strives to uphold the high standards of the fraternity, and through instructive and interesting meetings to keep before the members the values and delights of classical scholarship. The meetings are usually held at the home of Miss Lillian Dimmitt, the adviser.

Officers for the year have been: Robert Caine, president; Mildred Wikert, vice-president; Doreen Dallam, secretary; William Smith, treasurer; and Marie Bergquist, sergeant-at-arms.

Phi Sigma Iota



Schunck

President.....Betty Schunck
Secretary.....Betty Lou Saunderson
Corresponding Secretary and Treasurer.....Henry Kanthlener

Phi Sigma Iota, national honorary romance language fraternity, is an organization for students of the romance languages of junior and senior classification. The purpose of the organization is to foster better relations between nations and to arouse an interest in international culture. Monthly meetings are held at which members read research papers pertaining to the languages. Other members this year were: Helen Johnson, Helen Anderson, Kurt Sinnreich, Darrel McEntaffer, and James Wallen. Professor Gordon Kinney was elected a faculty member. Mr. Kanthlener is adviser.

Sigma Tau Delta



Huxtable

President.....Betty Huxtable
Vice-President.....Lauree Wood
Secretary-treasurer.....Betty Bootjer
Faculty adviser.....Miss Mirah Mills

The Gamma Beta Chapter of Sigma Tau Delta, national honorary English fraternity, was organized at Morningside College in 1926. Its purpose is to advance the study of literature, encourage worthwhile reading, and promote the mastery of written expression. Members must be English majors, and they are elected on the basis of scholastic standing and proficiency in English. Meetings are held monthly. This year the programs have been devoted to the study of the modern drama. The programs are presented by the members.

Sigma Pi Sigma



Back Row—Koch, Alvey, Haskins, Wert.
Front Row—Stern, Graber, Lindsay, Gwinn.

President.....Charles Wert
Vice-President.....Max Stern
Secretary-Treasurer.....Fuller Haskins

The Omicron chapter of Sigma Pi Sigma, national honorary physics fraternity, is a group of students who have done outstanding work in the Physics Department. The purpose of the club is to encourage interest and study in the field of advanced physics. Each year the club offers a prize to the highest ranking student in the freshman physics class. Bi-monthly meetings are held with Dr. M. E. Graber and Professor Ira J. Gwinn as advisers of the group. These meetings include discussions of modern physics, related sciences, and individual research by club members.

Pi Gamma Mu



Back Row—Olsen, Roland, Miller, Emme.
Middle—Hartley, Miller, Harter, Clayton, Thorngreen, Tweito.
Bottom Row—McNee, Schuldt, Emme, Johnson, Murray.

President.....Arthur Clayton
Vice-President.....Dale Harter
Secretary.....Ruth Olsen
Treasurer.....Miss Marcia McNee

Pi Gamma Mu is the national honorary social science fraternity. The society was founded to encourage the study of society and all social questions which are of concern to the progress of man. It encourages scholarship and character building activities. Admission to the organization is a reward for that achievement.

Alpha Kappa Delta



Hawthorn

Alpha Kappa Delta, national honorary sociological fraternity, is under the sponsorship of Dr. Horace Hawthorne. Through this organization, research workers, welfare workers, and special students have the opportunity to discuss the many problems with which they are confronted. To be eligible to join, a student must have a major interest in sociology and have a high scholastic average. Its purpose is to promote scholarship, creative writing, and community service in the social field.

Kappa Chi



Back Row—Stiles, Easley, DeGarmo, Bachert, Rae, Lanning, Duncan.
Middle Row—Roadman, Anderson, J. Gedwillo, Smith, Cunningham,
Brockman, Schuldt, Johnson.
Seated—LaSuer, Zenkovich, Madison, Huey, Wells, A. Gedwillo.

The students, who are training for the ministry or any other full time religious work, are prospective members of Kappa Chi. The organization has for its aims the development of fellowship between Christian workers, and the encouragement of any program, project, or movement that lie within its sphere.

OFFICERS

President.....S. Willard Cunningham
Vice-President.....Robert Caine
Secretary-Treasurer.....Robert Rae

Cosmopolitan Club



Walker

President Frances Walker
 Vice-President..... Marjorie Carlson
 Secretary Kurt Sinnreich
 Treasurer Margaret Slowey
 Adviser..... Dean Paul Johnson

In 1926 a chapter of the National Association of Cosmopolitan Clubs was established at Morningside. The club maintains a two-fold purpose: to create a spirit of goodwill and fellowship among students of various nationalities at Morningside, and to learn more about customs and attitudes of people in foreign lands. The club sponsored a Festival of Nations at which an international dinner was served and a pageant, "My Country 'Tis of Thee", presented. Marjorie Carlson was chairman.

International Relations Club



Litecky

Chairman..... John Litecky
 Adviser..... Dr. Thomas Tweito

The International Relations Club meets twice a month, at which time international and national problems are discussed. This year they sponsored, in conjunction with Cosmopolitan Club and M. C. A., Paul Moritz, who spoke during Help-China Week. The club also sponsored an assembly debate on the question of the "Lease-Lend Bill."

Biology Club



Back Row—Crabb, Yeager, Murray, Laffoon, McDonald, Stephens, Gandek.
 Middle Row—Hamilton, Thorngreen, Nettleton, Booth.
 Front Row—Forsberg, Arnold, Clayton, Schatz.

OFFICERS FOR FIRST AND SECOND SEMESTERS

President..... Keith Arnold, Guy Nettleton
 Vice-President..... Geraldine Booth, Phyllis Thorngreen
 Secretary..... Dayrle Crabb, Bryce Clayton
 Treasurer..... Jean Laffoon, Bill Murray
 Reporter..... Frances Forsberg
 Adviser..... Dr. T. C. Stephens

This club is maintained in the biology department for the purpose of stimulating interest in biological fields and providing an opportunity for those interested in this department to have social gatherings. The ultimate aim of the club is to promote scientific ideals and prepare its members for membership in Beta Beta Beta, national honorary biological fraternity. Bi-weekly luncheons are regular events and are usually followed by reports of biological interest.

College League

President..... Robert Caine
 Vice-President..... Wesley Jacobsen
 Secretary Dorothy Luchsinger
 Social Chairman..... Irene Schaal
 Publicity Chairman..... Eleanor Thorpe
 Advisers..... Dr. and Mrs. Paul E. Johnson



Caine

Grace Collegians meet every Sunday evening at Grace Methodist Church in cooperation with the Grace youth program. The purpose of the group is to offer to every college student an opportunity for religious self-expression in a church-college atmosphere. Following a worship service, a discussion period is held in the "Upper Room" conducted by the students of the league, with a varied program of outside speakers and student leaders. A well-rounded social schedule encourages friendship among all college students.

M. C. A.



Emme, Scott, Harris, Bush.

| | |
|--|---|
| President.....Eugene Emme | Y. W. C. A. Representative.....Mildred Wikert |
| Vice-President.....Mary Eileen McBride | Y. M. C. A. Representative.....Robert Caine |
| Secretary.....Eleanor Thorpe | Kappa Chi Representative.....Robert Rae |
| Treasurer.....Louise Madison | Social Chairman.....Dale Harter |
| | Radio Chairman.....Ruth Harris |

The purpose of this organization is to further student fellowship and help the students to formulate a worthwhile philosophy of life. Activities under the direction of M. C. A. include a drive for Hwa Nan College in China, Religious Emphasis Weeks, firesides in faculty homes, co-operating with Kappa Chi in sponsoring gospel team work, weekly radio programs on KSCJ, and assistance in presenting New Student Days.

Pre-Engineers Club



Back Row—Alvey, Leachman, Jones, Haskins, Wert, Daniels, Stiles, Hempstead, McDonald, Brown, Wachter, Koch, Lindsay, Posten, Oakleaf, Saunderson, Green.
Bottom Row—Wagstaff, Scheider, Gwinn, Graber, Knudsen, Stern.

| |
|---|
| President.....Vic Alvey, Charles Wert |
| Vice-President.....Charles Wert, Fuller Haskins |
| Secretary.....Glenn Smith, Bob Hempstead |
| Treasurer.....Fuller Haskins, James Leachman |
| Historian.....Robert Wagstaff, Lyle Knudsen |

The Pre-Engineers' Club of Morningside College is a group of young men whose interests and vocations lie in the field of science. The major accomplishment during the first semester of each year is the planning and presentation of its annual Engineers' Night program. Every week the club has a luncheon and business meeting; part of the program is dedicated to engineering reports and lectures by outside speakers. Interested members have joined specialized branches of the club: the Aeronautics Club, the Radio Club, the Chemistry Club, and the Photography Club, where they may work on larger projects as a group.

Alumni

| | |
|---------------------|--------------------|
| President..... | Mrs. Lowell Kindig |
| Vice-President..... | Mrs. Park Morehead |
| Secretary | William Wolle |
| Treasurer..... | Ira J. Gwinn |

The alumni organization serves as a means of keeping Morningside graduates and ex-students in close connection with the college. The annual dinner initiating new members and the Homecoming dinner were supplemented this year by two added meetings—a summer picnic for all Sioux City alumni and their families, and a reception for Professor MacCollin and the choir after the home concert.

Zeta Sigma



Thomas

| | |
|-----------------|-----------------|
| President | Virginia Thomas |
|-----------------|-----------------|

Zeta Sigma is a local honor society whose purpose is to promote scholarship and leadership. The scholastic record necessary for membership is at least 3.3 honor points. Students are not eligible until the spring of their Senior year.

Zeta Sigma has established the Frederick W. Schneider Loan Fund which is awarded to students of high scholarship, good character, and leadership, who are interested in preparing for some form of humanitarian service.

Aeronautics



Standing—Graber, Hempstead.
Seated—Alvey, Graham.

During the last two years the Morningside College Aviation Department has expanded until it is now recognized as one of the leading schools in the country. Such companies as the Martin Airplane Corporation and other large plants are now giving the Morningside engineers preferred classification and placement in jobs every year.

For those whose interests lie in the field of flying, Morningside offers a complete pilot training program. This includes a ground school course in engines, meteorology, navigation, Civil Air Regulations, and aircraft operation. In the primary training the student must spend from 35 to 50 hours in the air and 72 hours in ground school before qualifying for a private pilots' license. The second semester of their sophomore year they log 35 more hours in the air in a faster and more powerful airplane and 108 more hours in advanced ground school and shop courses qualifying them for a restricted commercial license. At the end of this training they are qualified for a commission in the army or navy or as a co-pilot in the commercial field.

For those whose interests lie in the field of aeronautical engineering and designing, the college offers a complete engineering course in aviation. The first two years the students receive the basic courses in aerodynamics, meteorology, navigation, and shop work. In their junior and senior years they take the advanced courses in airplane designing, stress analysis, and practical shop courses. They put their design course into practice by actually building airplane wings and structures and having them pass government inspection.

Dr. Graber, head of the department, teaches the ground school classes in aerodynamics, meteorology, navigation, aviation design, and Civil Air Regulations. Mr. Alvey and Mr. Hempstead, assistants to Dr. Graber, conduct the shop work in welding, motor overhaul, aircraft construction, and rigging. Mr. Ed Graham, owner of the Graham Flight Service, is in charge of all the flight training at the Airport.

Manuscript Club and Magazine



Johnson

Madison

PresidentKenneth Johnson
Vice-PresidentKathryn Madison
Secretary-TreasurerBetty Huxtable
Faculty Adviser.....Miss Mirah Mills

Manuscript Club was organized on March 18, 1938, under the guidance of Professor Lynn Beyer for the purpose of encouraging creative writing among the students of Morningside College. Membership, open to any student on the campus, is based on the approval of an original manuscript, but is limited to sixteen members. The club meets twice a month. Programs consist of the reading and criticism of original manuscripts of members and those submitted by prospective members.

The club sponsors and edits *Manuscript* magazine of which Kathryn Madison is editor with Harold Wissink and Gwendolyn Downey as associate editors.

Psi Chi

PresidentFerdinand Bahr Corresponding Secretary.....Stanley Anderson
 Vice-PresidentDoris Brown TreasurerFerne Roland
 SecretaryGeraldine Booth

Psi Chi is the national psychology honor fraternity, whose purpose is the furthering of interest in modern trends in psychology. The club sponsored Psychology Night this year with great success. Other members are: Edna Elving, Rev. V. V. Schuldt, Dr. E. Sibley, Dean Johnson, Stanley Anderson, Minetta Miller, Robert Pullman, Professor T. E. Tweit, Ed Hendricks, Dorothy Luchsinger, and Minnie Karcher.

Top Row—Emme, Agostine, Arnold, McNee. Davenport, Emme, Gusteson, Harter, Patterson.
 Bell, Bock, Booth, Brockman, Brown. Bottom Row—Rae, Rich, Roland, Thorngreen, Voris.



Seventy-eight

MUSIC DRAMATICS FORENSICS



Paul MacCollin



Professor Paul MacCollin is the director of the Conservatory of Music which, due to his high ideals and persistent efforts, has come to be recognized as one of the best music schools in this part of the country. He is also the director of the nationally known Morningside College A Cappella Choir. His understanding of the human voice, his genius of conducting, and his ability to train a group of singers to sing as one, has brought him recognition by leading music critics of the United States.

Choir

The Morningside College A Cappella Choir, under the capable direction of Mr. Paul MacCollin, completed this year the most successful concert tour in the history of the institution. This year the famous group toured the "Sunny South," giving concerts in many high schools, colleges, universities, and Methodist churches.

PERSONNEL

| <i>Sopranos</i> | <i>Altos</i> | <i>Tenors</i> | <i>Basses</i> |
|-----------------------|---------------------|-----------------|------------------|
| Helen Latch | Mary Louise Barrett | Rex Reed | Robert Rae |
| Dorothy Long | Edythe Albert | LeRoy Kuhlmann | John Sipma |
| Alice Scott | Clarice Rohweder | Bill Powers | Don Fritzsche |
| Elizabeth MacCollin | Ruth Rance | Bill Easley | Jay Wicker |
| Glennys Corderman | Maxine Ericksen | Grayson Sloan | Bartlett Lubbers |
| Opal Walker | Eleanor Click | Kenneth Ruby | Wilbur Morse |
| Harriett Swanson | Lubertha DeGraaf | Harold Ladwig | Keith Arnold |
| Marjorie Nelson | Dorothy Jones | Wilson Reynolds | Oliver Mogck |
| Mary Louise Fairchild | Betty Wicklund | Frank Nelson | Ronald Bush |
| Frances Haverfield | Irene Schall | Bob Caine | Dale Dunn |
| Beverly Werden | Doreen Dallam | Gene Emme | Warren Kuhler |
| Betty Bootjer | Ruth Harris | Jim Bolton | Karl Matthiesen |
| Martha Helen Nelson | Marjorie Swisher | | |
| Jean Jones | Ardis Hall | | |
| Helen Johnson | Evelyn Capener | | |
| Willo Jean Neimeyer | Dorothy Schumacher | | |
| Bonnie Burr | | | |
| Mary Patterson | | | |
| Juanita Bates | | | |
| Betty Lou Beckwith | | | |



Band

The Morningside College Band is under the direction of Everett Timm. It plays for all pep rallies as well as for all football and basketball games. It is one of our most popular organizations. This year the band took its seventh annual tour, giving concerts in Iowa and neighboring states.

PERSONNEL

| | | |
|----------------------|------------------|-------------------|
| Bonnie Stribley | Marvel Wadsley | Robert Yeager |
| Dorothy Shoemaker | Oliver Mogck | Albert Haenfler |
| Leona Witzenberg | William Powers | Ray Peterson |
| Jeanne Timm | Wallace Peterson | Glen Thompson |
| Gladys Hays | John Culbertson | Marian Sanders |
| Jean Jones | John Brilman | Marion Benton |
| Luella Bruhn | Robert Parsons | Wayne Stevens |
| Marvel Lamb | Dale Dunn | Eugene Orner |
| Jeanne Elfine | Devon Hahn | Grayson Sloan |
| Luberta DeGraaf | Robert Brooks | Eleanor Click |
| Vernice Christiansen | Jay Wicker | Lucille Werder |
| Lorraine Iverson | Kenneth Ruby | Louise Madison |
| Harriett French | Harold Ladwig | Corinne Imes |
| Ira Schwarz | James Adams | James Dutton |
| Robert Lowry | Mildred Pfeiffer | Vera Smith |
| Robert Hicks | Louretta King | Francis Kingsbury |
| Jean White | John Sipma | Charles Meacham |
| Homer Garretson | | |



Eighty-two

Sioux City Civic Concert Course



Kucinski, Crooks, MacCollin.

The 1940-41 Sioux City Civic Concert Course opened its season October 23, with Richard Crooks, famous American tenor. In a recent radio poll he was chosen as the most popular tenor of classic repertoire on the air. The next artist to appear was Anatol Kominsky, youthful violinist, who is already ranked as one of the world's outstanding performers in his field.

The Don Cossack Choir and Dancers added a little different note to the Course. Their concert consisted of traditional old Cossack songs and was presented in a memorable fashion. The next two numbers were both soloists, ably accompanied by the Sioux City Symphony Orchestra, Ezra Rochlin, brilliant pianist, and Mildred Dilling, world's foremost woman harpist.

The season was brought to a close by a thrilling concert presented by Helen Jepson, soprano star of opera, concert, radio, and motion pictures.

Eighty-three

Sioux City Symphony Orchestra

The Sioux City Symphony Orchestra is under the direction of Leo Kucinski, head of the violin department of the Conservatory. The orchestra is composed of many of our talented students as well as a large number of professional musicians. This outstanding group is well known throughout the middle west for the unusual quality of its performances.



Mu Phi Epsilon



Left to Right—Nelson, Santee, Scott, Barrett, Rance, Foster, Albert.

It is the purpose of Phi Zeta Chapter of Mu Phi Epsilon to promote musicianship, scholarship, and friendship among the music students on our campus. This society is composed of junior and senior girls and faculty women of the Conservatory who have superior scholastic and musical attainments.

Officers for the current year include: Martha Helen Nelson, President; Mary Louise Barrett, Vice-President; Edythe Mae Albert, Recording Secretary; Louretta King, Corresponding Secretary; Margaret Berg, Alumnae Secretary; Esther Mary Santee, Treasurer; Maxine Foster, Historian; Ruth Rance, Warden; Alice Scott, Chaplain; Faith Woodford, Adviser.



Jones, Hays, Smith.

Drum Majorettes

A flashy trio that can really strut its stuff way out in front! These three high-steppers are Vera Smith, Jean Jones, and Gladys Hays.

Three Keys and a Chord



Harris, Emme, Scott, Pullman.

The Three Keys of this very popular ensemble are Alice Scott, soprano; Ruth Harris, contralto; and Gene Emme, tenor. The Chord is Bob Pullman, pianist. Their specialty is swing music—both sweet and hot. Their old stand-by is their inimitable rendition in three verses of “The Shiek from Araby.” The group is in great demand at all occasions.

Morningside String Trio



Garretson, French, Feick.

The Morningside String Trio includes Homer Garretson, violinist; Robert Feick, cellist; and Harriett French, pianist. The group appears weekly on the M. C. A. broadcasts and performs at other times throughout the year for fine music lovers of the city.

Student String Quartet



Garretson, Prechel, Feick, Bush.

The Student String Quartet is composed of Homer Garretson, first violin; James Prechel, second violin; Ronald Bush, viola; and Robert Feick, cello. This foursome has played for various school functions and for many organizations in and around Sioux City.

Madrigal Singers



Left to Right—Emme, Ruby, Shoemaker, Scott, Jones, Harris, Mogck, Bush.

Madrigal Singers is a group of ten students who sing for the joy of singing. They were organized in December to sing Christmas songs and carols. They appeared before various organizations in the city and also sang for a special Christmas chapel program. The members include: Kenneth Ruby, Eugene Emme, Dorothy Shoemaker, Ruth Harris, Dorothy Jones, Helen Latch, Mary Lou Fairchild, Alice Scott, Oliver Mogck, and Ronald Bush.

Morningside Music Fraternity



Back Row—Canning, Timm, MacCollin, Sipma, Fritzsche, Lubbers, Peterson,
Garretson, Prechel, Reistrup, Kooiker.
Seated—Kinney, Feick, Lowry, Brooks, Mogck, Mathwig, Kucinski, Werder.

The Morningside Music Fraternity is a new organization on the Morningside campus. Officers of the fraternity are: Harry Werder, President; Homer Garretson, Vice-President; Wallace Peterson, Secretary-Treasurer; John Sipma, Warden; and James Reistrup, Faculty Adviser. The fraternity has as its aim to advance and to support the highest musical standards of American music.

Messiah Soloists



Kuhlmann

Two "Morningsiders" were chosen as soloists for the 1941 presentation of Handel's *Messiah*. The Morningside College Vesper Choir and Chapel Choir and the Sioux City Civic Chorus were combined and gave a splendid performance under the direction of Mr. MacCollin. Miss Lucille Fritzsche, one of last year's graduates, was chosen to sing the soprano solos, and LeRoy Kuhlmann, a junior in the Conservatory, was chosen to be the tenor soloist.

John Felton



John G. Felton has completed another successful year at Morningside College as head of the Department of Speech and Dramatics. He has produced three outstanding plays, among them *The Wingless Victory* by Maxwell Anderson. Under his direction the department has acquired a variety of new equipment, including a rotary electric saw for scene building and a lighting control board.

Mr. Felton received his Masters Degree at Iowa University and was on the summer school faculty there in 1940. He is especially creative in the technical aspects of the stage. Mrs. Felton, who is also a dramatics major, assists him.

Alpha Psi Omega



Harter

Dale Harter was Director of the Alpha Gamma Cast of Alpha Psi Omega, National Honorary Dramatics Fraternity, which is an active participant in the dramatic and speech activities on the campus. Entrance into the organization may be obtained by presenting fifty points earned in acting and production, with a minimum of fifteen points and a maximum of thirty-five points in either phase of the work. Because of the high standard for entrance there were only five members in the organization this year. They were Winifred Felton, John Felton, Dale Harter, Charlotte Robinson, and Mary Eileen McBride. Faculty sponsor for the group was Mr. Felton.

Collegiate Players



McBride

Another successful year was added to the record of Collegiate Players, Morning-side College dramatic club. Members of the group took an active part in casting and producing the season's productions and sponsored an eight-week course in stage make-up, which was directed by Mrs. John Felton.

Officers for the year were: President, Mary Eileen McBride; Vice-President, Katherine Brown; Secretary-Treasurer, Betty Hoefler; and two other members form a board of control, Mary Cruikshank and Richard Brenneman.

The Night of January 16th

CAST

| | |
|-------------------------------|-------------------|
| Bailiff | Robert Tracy |
| Judge Heath..... | Robert Caine |
| District Attorney Flint..... | Donald Wertz |
| His Secretary..... | Betty Boyd |
| Defense Attorney Stevens..... | Raymond Gusteson |
| His Secretary..... | Hope Faul |
| Clerk of the Court..... | Richard Barrett |
| Karen Andre..... | Margaret Dutton |
| Dr. Kirkland..... | Myles Gates |
| Mrs. John Hutchins..... | Ethel Davis |
| Homer Van Fleet..... | John Maynard |
| Elmer Sweeney..... | Harold Bomgars |
| Nancy Lee Faulkner..... | Lucille Gehrt |
| Magda Svenson..... | Betty Hoefler |
| John Graham Whitfield..... | Merton Haynes |
| Jane Chandler..... | Eleanor Thorpe |
| Sigurd Jungquist..... | Edwin Breau |
| Larry Regan..... | Richard Brenneman |
| Roberta Van Rensselair..... | Faith Buchner |
| Court Reporter..... | Maurice Scheider |

The play *The Night of January 16th* by Ayn Rand, opened the 1940-1941 dramatic season. The entire action of the play takes place in a close packed courtroom where Karen Andre is on trial for the murder of Bjorn Faulkner, unscrupulous financier. The play is the actual trial and its most novel feature is the selection of a jury from the audience. The conclusion of the play is the verdict which is given by the jury after the testimony has been given.

Wingless Victory

CAST

| | |
|--------------------------|---------------------|
| Phineas McQueston..... | Richard Brenneman |
| A Girl..... | Jean Rager |
| Justice Urquhart..... | Merton Haynes |
| Mungo | Robert Tracy |
| Mrs. McQueston..... | Velta Jean Dixson |
| Ruel McQueston..... | Edwin Adams |
| Venture | Mary Siedschlag |
| Faith Ingalls..... | Mary Eileen McBride |
| Nathaniel McQueston..... | Gene Kennedy |
| "Happy" Penny..... | Don Ballantine |
| Oparre | Margaret Dutton |
| Toala | Frances Walker |
| Durian | Mary Gomez |
| Harry | Myles Gates |
| Letty | Mary Cruikshank |
| Van Zandt..... | Donald Wertz |

In *The Wingless Victory*, Maxwell Anderson has written the universal and bitterly timeless story of race prejudice, set not in our day as it well might be, but, for better perspective, for poetic ease and security of portrayal, against a background of early New England.

It is the story of Oparre, a Malay princess, whom Nathaniel McQueston brings home as his wife to face the hatred of his family and the bitterness of the New England town.

The play was presented for New Outlook Days on March 4 and before capacity houses on March 6 and 7.



Ninety-two

Religious Drama Group

A religious drama group was organized during the second semester for the purpose of reading and producing religious dramas. A one-act play *The Victor*, was presented by members of the group.

Sponsor for the organization was Irvine Thoe, graduate of 1940. Officers were:

| | |
|----------------------|---------------------|
| President..... | Mary Eileen McBride |
| Vice-President | Lucille Gehrt |
| Secretary | Eleanor Thorpe |
| Treasurer | Robert Ferris |

Ninety-three

Mendall B. Miller



Clear thinking, logical reasoning, generous nature, characterize the genuine personality of Professor Miller, the debate coach. Mr. Miller's powers of analysis, insight through fallacy, penetrating search for the true and righteous betterment of human welfare have rendered him an invaluable guide to the squad members. He has maintained the spirit of the key words of Pi Kappa Delta, National Forensic Fraternity, *persuasion, beautiful and just.*

Team members and students revere him first of all as a man, and secondly as a high-minded, humanitarian, Christian economics professor and debate coach.

Pi Kappa Delta



Top Row—Booth, Olsen.
Bottom Row—Davenport, Harter, Rae.

Pi Kappa Delta is the national honorary forensic fraternity, whose membership is based on skill in debate, extempore speaking, and oratory, and general high scholastic attainment. Membership is attained only through participation in eight inter-collegiate debate contests. The purpose of the organization is to stimulate progress in, and to promote the interests of inter-collegiate oratory, debate, and public speaking, by encouraging a spirit of inter-collegiate fellowship, of brotherly cooperation and interest, and by conferring upon deserving candidates a badge of distinction, proficiency and honor, varied and graduated according to merit and achievement.

Officers for this year were:

- PresidentRobert Hamel
- Vice-PresidentDale Harter
- Secretary and Treasurer.....Ruth Olsen

Intercollegiate Debate



Top to Bottom:
Davenport
Booth
Sernstrom
Caine

RESOLVED: THAT THE NATIONS OF THE WESTERN HEMISPHERE SHOULD FORM A PERMANENT UNION.

The question of this season was a difficult, elusive, and controversial resolve—one which gave rise to Demosthenean oratory, logical reasoning, and altruistic vision of a world peace born of world need. The affirmative speakers who laid out the proposed plan pleaded in rhetorical appeal the case of world peace. The negative refutation called out fallacy-finding, practical-minded contra-analysis of the proposed “union of nations” of the western hemisphere. Great consideration was given the Biblical text which securely founded and lent vision to the affirmative platform: “They shall beat their swords into plowshares, and their spears into pruning-hooks; nation shall not lift up sword against nation, neither shall they learn war anymore.” Isaiah 2:4.

The squad was a smoothly-running, coordinated body, united in common purpose and conviction, under the able captaincy of Bob Hamel. Our popular coach, Mendal Miller, signed up eleven men and women, seven of whom were veterans in the art of argument, who handled the contests of the season with a quality of performance which upheld to the ranks of inter-collegiate debate the high standards of Morningside College.

A new and different schedule of contests augmented and enriched the Pi Kappa Delta program for the season. This year a series of debates was arranged with Drake University of Des Moines, Iowa, in which this Drake-Morningside combine barnstormed a number of Iowa high schools throughout the state. No national forensic tournament was held this season, this tournament being scheduled only in alternate years. Thus, the Pi Kappa Delta Provincial Tourney, held in Sioux City, presented the highest ranking competition of the season, an invitational meet attended by only Chapters from Dakota Wesleyan, Mitchell, South Dakota; Huron College, Huron, South Dakota; Yankton College, Yankton, South Dakota; South Dakota State, Brookings, South Dakota; Sioux Falls College, Sioux Falls, South Dakota; Northern State Teachers College, Aberdeen, South Dakota; Augustana College, Sioux Falls, South Dakota; Jamestown College, Jamestown, North Dakota; Western Union College, LeMars, Iowa.

The eleven active members of the Morningside debate squad for the 1940-41 season were: Robert Hamel, Fred Davenport, Robert Caine, Eleanor Thorpe, Carol Goltz, Lois Sernstrom, Geraldine Booth, Richard Klas, Ted Witcher, Wesley Jacobsen, and Robert Rae.

ATHLETICS

Individual Schedules

ROBERT HAMEL

Omaha—Liberty
 St. Paul—Cedar Rapids
 Brookings—Vermillion
 Cherokee—Jefferson
 Sac City—Spirit Lake
 Sioux Provincial

FRED DAVENPORT

Omaha—Liberty
 St. Paul—Brookings
 Vermillion—Cherokee
 Jefferson—Sac City
 Spirit Lake
 Sioux Provincial

CAROL GOLTZ

St. Paul
 Sioux Provincial

LOIS SERNSTROM

Cedar Rapids
 Omaha
 Sioux Provincial

GERALDINE BOOTH

Cedar Rapids
 Omaha
 Sioux Provincial

TED WHICHER

Omaha
 Liberty

ROBERT CAINE

Omaha
 Cedar Rapids

DICK KLAS

Omaha
 Liberty

WESLEY JACOBSEN

Brookings

ELEANOR THORPE

St. Paul

Fred Davenport was awarded second place in extempore speaking in the Sioux Provincial. Carol Goltz was also awarded second place in the same division for women.



ATHLETICS



Jason M. Saunderson



Coach Jason M. Saunderson, veteran Morningside mentor, has just reached another mile-stone in his enviable coaching career, the thirtieth year as head coach in the Maroon camp. "Saundy" looks forward to many more enjoyable seasons of coaching and it is our sincerest wish that his untiring efforts will be well rewarded.

Bernie Scherer



A new addition to the Morningside coaching staff last fall was Bernie Scherer, former All-Big Six Conference end from Nebraska with three years of "pro" ball experience with the Green Bay Packers. Bernie stepped in as line coach for the Maroons and very ably filled the position. Putting the linemen through their paces every night, Scherer soon discovered individual weaknesses and strong points. Emphasizing the good points and correcting the faults, he turned out a well groomed line. His efforts were more than appreciated and we will be looking forward to his help in training next year's team.

Varsity Football



—S. C. Tribune.
 Back Row—Hartwig, Logue, Ballentine, Hanson, Feikema, Ott, Goodenow, Sheridan, Litecky.
 McCoy, Smilanich, Adams, Reese, Schiller, Haenfler, Thompson, Spirey, Arnold, Widler.
 Front Row—Rossi, Steck, Simons, Halford, Leopold, Kennedy, Lease, Robar, Kerzie.

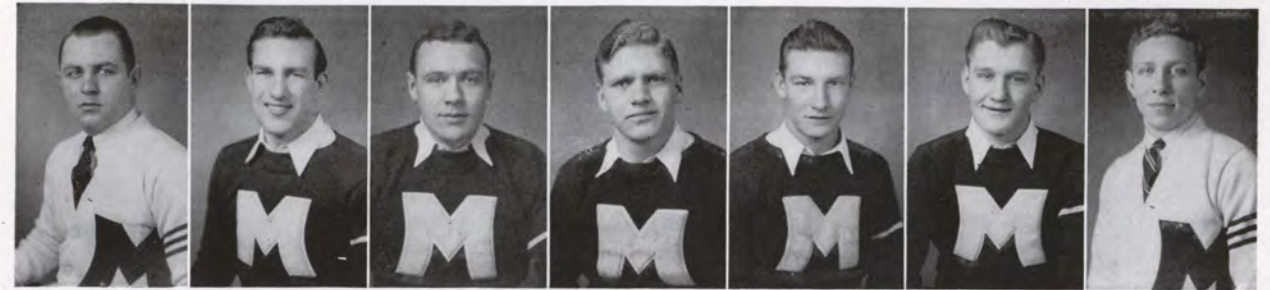
After two weeks of preliminary practice, Morningside took the field against a small, fast team from Midland. It was soon evident that their lack of size was a definite handicap. The Maroons went home on the long end of a 26-0 score.

The following week, Loras College of Dubuque, who reportedly had the strongest team in years, was encountered. Rain during the day turned the field into a sea of mud, and the boys found the going rather tough. Each team managed to score once, ending the game in a 6-6 tie.

The following Saturday night, the Maroons played host to the Jackrabbits of South Dakota State. The teams were evenly matched and it was a dog-eat-dog battle. Near the end of the second quarter Halford broke loose and on a spectacular run carried the ball down to the five yard line where in two attempts, Logue plunged over into pay dirt, but the extra point was missed. The Maroons held the lead throughout the game until the closing minutes when South Dakota connected a pass, catching the defense men flatfooted, and went over untouched.

Dakota Day at the University of South Dakota was the setting for the next game and the Maroons were the victims. South Dakota scored just about at will, and at the end of the third quarter they led 26-0. Morningside's second string was sent in and went down the field for a score, missing the extra point. South Dakota was kept in tow, and as the final gun went off, the Maroons were deep in enemy territory.

For the first time in several years, the Homecoming jinx was overcome and the Maroons came out on top with the Omaha Indians as the martyrs. With 27 seconds of the first half to go, George Schiller, Maroon guard, kicked a field goal from the 34 yard line and the Maroons pushed over for a lone touchdown and extra point in the third quarter.



Adams

Arnold

Ballentine

Feikema

Haenfler

Kerzie

Halford

The Indians were held scoreless until late in the game when they also countered with a touchdown and extra point to give a final score of 10-7.

On the second road trip game, the Maroons played on even terms with the conference champs, Iowa Teachers. In the fourth quarter, a Morningside punt was blocked which paved the way for the Teachers' first score and point after touchdown. The Maroons' spirit and fight were dampened and State Teachers, invigorated by the first score, were able to counter with 7 more points which left the final score 14-0.

The North Dakota State boys who held down the bottom rung in the conference ladder were guests on the next Saturday in a game that more resembled a swimming meet. Rossi had a field day with three touchdowns and the Maroons triumphed 21-13.

The season's record consisted of 3 wins, 2 ties, 2 losses.

NED ADAMS

Ned was a three year letter man from Sioux City. He changed over from guard to tackle position which he has held down for the last two years and for which position he was named on the all-conference team.

DEWEY HALFORD

Calling signals from the halfback position, little Dewey Halford earned his third letter and also was one of the three men picked on the all-conference team.

JOHN LITECKY

A Junior College transfer from Hibbing, John was the most improved man on the squad and did a commendable job at his end position.

GEORGE SCHILLER

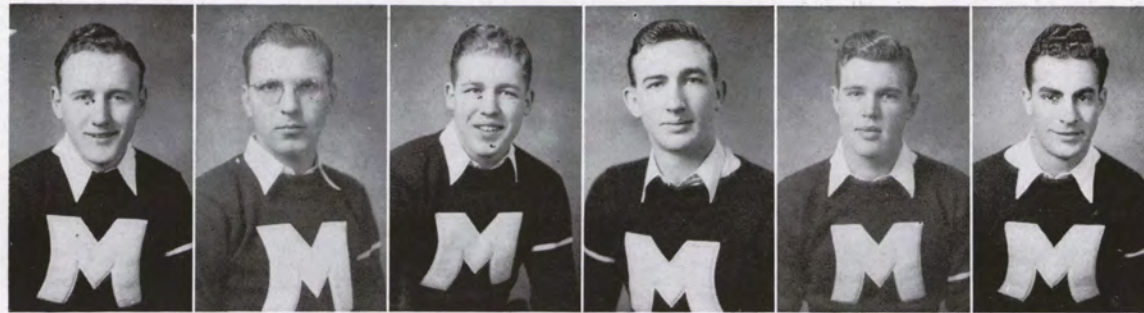
Two-hundred-ten pound guard who realized the ambition of his football career—kicking a field goal which won the Omaha game 10-7.

STEVE SMILANICH

This guard is as tough as his name is to pronounce. Steve came to us as a Junior College transfer of Virginia, Minnesota. He earned two letters at guard and was the third man to be picked on the North Central All-Conference team. An added distinction was given to Steve when he was chosen as a member of the "Little All-American" in guard position. Only once before in the record of Morningside has a player been chosen on this honorary team.

DON BALLENTINE

The heaviest man on the squad, Don earned his second letter at tackle this fall.



Lease Litecky Logue McCoy Ott Rossi

BERNARD FEIKEMA

The rougher the going the better he likes it. Bernie, regular end, earned his second letter at this spot.

ALBERT HAENFLER

All work and no glory: such is the fate of "Hap," regular blocking back for the past two years.

STEVE KERZIE

Junior College transfer from Hibbing, Steve alternated with Halford and should more than fill his shoes next year.

JOE LEASE

Joe got his chance and more than proved his worth in the fullback spot.

ELMENDO ROSSI

Another Junior College transfer from Eveleth, "Pickle" held down a regular halfback spot and demonstrated his agility by running through the entire team more than once.

CHUCK SHERIDAN

Big "Moose" earned his second letter playing tackle and also was honored on the sports writers all-conference team.

—S. C. Tribune.



One Hundred Four



Schiller Sheridan Smilanich Spiry Steck Widler

DON WIDLER

Starting off the first of the season with a shoulder separation and finishing up with a bad leg, Don saw action in between times as a guard.

STERLING LOGUE

One-hundred-ninety pound fullback hit the starting lineup as a sophomore, and with a little more experience will be hard to beat.

JERRY McCOY

Another one of the boys who likes the game for its roughness.

ORLAN OTT

The big boy from Hartley, Ott was transformed into a center this year.

ORVAL SPIRY

"Spike," small for an end but making up for it in actions, had a lot of competition at the end post and should come into his own next year.

JIM STECK

A first string sophomore who filled the center position very effectively.

—S. C. Tribune.



One Hundred Five

Freshman Football



—S. C. Tribune.

Top Row—Obey, Strait, Pattison, Meyers, Adams, Moir, Reed, Schrinisky, Suknot,
Whitebeaver, Erickson, Jones, Dirr, Mathers, Hammond, Kipper, Springer, Smith, Schleusner, Wickland.
Bottom Row—Haenfler, Kuhler, Wehmeyer, Saunderson, Cook, Buckmiller, Goodrich, Witt.

When the call for freshman football was issued, Honie Rogers had twenty-eight men report to him eager for practice.

With a three game schedule facing them the boys settled down and really got to work, as the results of the games show.

The first game with South Dakota U. ended with the Maroons on top, 14-0. The second game was a repetition of the first with South Dakota U. going home on the short end of a 13-0 score. For the final game, the future Maroons mustered up all their power to run through, around and over Omaha to the tune of 46-6.

The season developed several men who will be valuable to the varsity next year, among these being the four fellows who played in Iowa's high school East-West All-Star game on August 31, 1940: Dirr, Buckmiller, Wehmeyer, and Goodrich.

Glen Rogers



Glen Rogers, or "Honie" as he is better known by the many Sioux City basketball fans, is a graduate of Morningside College. He returned to his Alma Mater and is entrusted with the job of head basketball coach, assistant athletic coach, as well as physical training instructor.

Varsity Basketball



—S. C. Tribune.
Back Row—Halford, Addison, Steck, Hanson, Vanderberg, Kerzie, Rossi.
Front Row—DeMaine, Langstaff, Deiters, Jones, Adcock.

Honie Rogers' 1940-41 Maroons showed considerable improvement over last year's squad and the boys went ahead to win nine out of sixteen starts. They got off to a good start by romping over Yankton College, scoring 54 points against 34 for their opponents. De Maine, playing his first varsity game, and Hanson turned in good performances. But on the trip to Carleton College, Morningside was downed by a second half rally by the home team, which left the Maroons on the short side of the score.

On their northern trip, the Maroons lost to North Dakota State, 39-35. De Maine was high point man of the game with four buckets and two free throws. The second game of that road trip, Morningside whipped the Sioux to the tune of 45-30, to win their first conference victory. Francis Jones was the outstanding player for the Maroons, counting for ten points.

Perhaps the most inspired playing of the season was witnessed in the game with the West Texas Teachers.

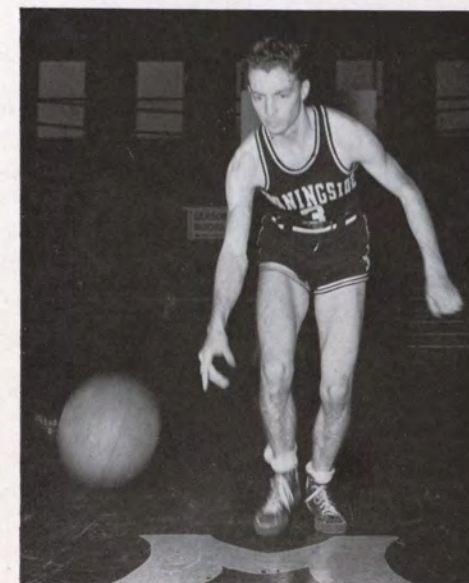
Every player on this team was over six feet. This kept the Maroons literally on their toes for the entire game. In fact the Maroons led at the half, but during the last half, many potential baskets were knocked aside by the opposing 6'10" center and the final score saw Morningside on the losing end of a 52-41 score.

In the Omaha games the boys met some ball handling which they found hard to beat, and twice the Omaha Indians walked away with scoring honors.

The season can be counted a complete success inasmuch as South Dakota University went down in defeat twice at the hands of Morningside.

In the last three games of conference play, the Maroons hit their stride and knocked off South Dakota State, Iowa State Teachers and South Dakota U., amassing 164 points to their opponents' 114.

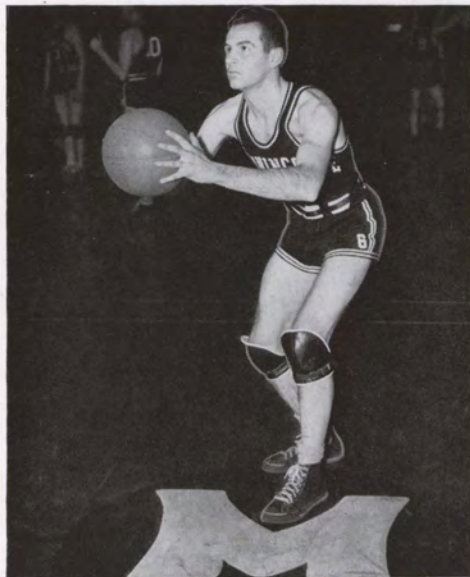
As a windup for the season, a bid to the National Inter-Collegiate tournament at Kansas City was accepted. Playing without the services of "Red" Langstaff, high scorer for the year with 113 points, who quit school to join the air corps, the Maroons lost out in the first round, 51-42, to Superior Teachers of Wisconsin.



Jones —S. C. Tribune.



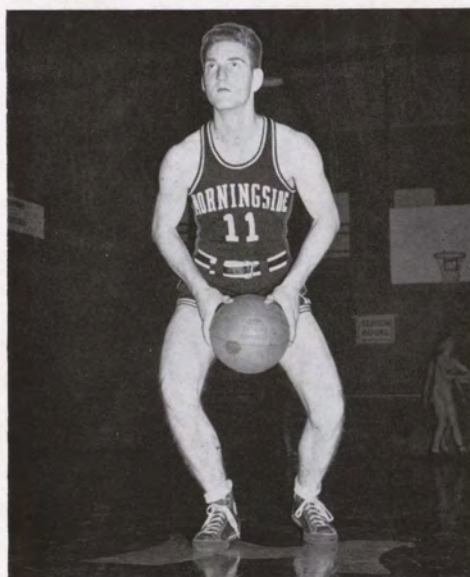
Hanson —S. C. Tribune.



—S. C. Tribune. Adcock

Season's Record

| | | | |
|-------------------|-----|--------------------------|-----|
| Morningside | 41 | West Texas Teachers..... | 52 |
| Morningside | 47 | Doane College | 31 |
| Morningside | 43 | Hastings College | 36 |
| Morningside | 54 | Yankton College | 34 |
| Morningside | 34 | Carlton College | 36 |
| Morningside | 27 | Omaha U. | 45 |
| Morningside | 35 | North Dakota State..... | 39 |
| Morningside | 45 | North Dakota U. | 30 |
| Morningside | 33 | South Dakota U. | 32 |
| Morningside | 32 | Omaha U. | 40 |
| Morningside | 37 | Doane College | 34 |
| Morningside | 42 | Iowa State Teachers..... | 55 |
| Morningside | 57 | South Dakota State..... | 32 |
| Morningside | 48 | Iowa State Teachers..... | 41 |
| Morningside | 57 | South Dakota U. | 41 |
| Morningside | 42 | Superior Teachers | 51 |
| Total | 676 | Total | 629 |



—S. C. Tribune. Langstaff

GLEN ADCOCK

Shifted from forward to guard, Glen earned his second letter as a Junior.

HAROLD DEITERS

A drawing card for his humor and adept passing antics, "Buck" made his first letter as a Sophomore.

JOE DE MAINE

Another Sophomore regular, Joe was a steady player and was runner up for individual scoring honors.

DEWEY HALFORD

The only Senior on the squad, Dewey was held in reserve and put in when a little extra pep and fight were needed.

WALLY HANSON

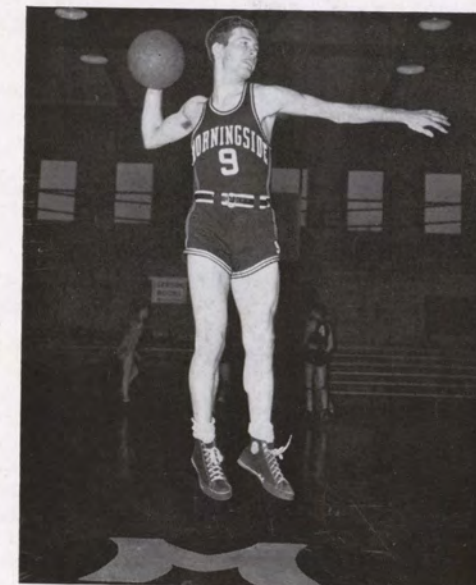
A big, rugged center from Winona, Minn., Wally was a standout in defensive play.

FRANCIS JONES

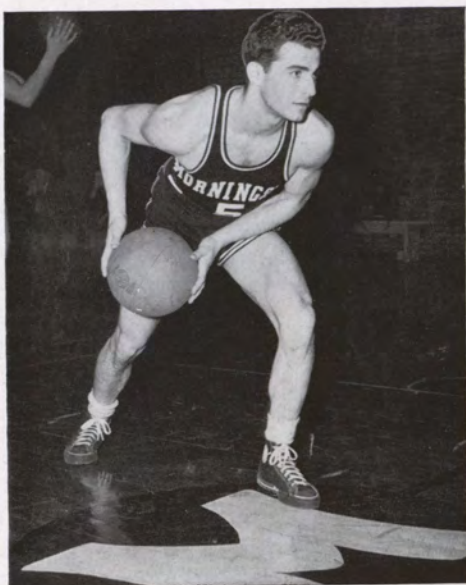
When there was an opponent to hold down and points were needed, "Philbert" was given the job. A good example of this was when Jones held Iowa State's leading conference scorer, Don Green to one point while he dropped in four buckets and a gratis toss.



Deiters —S. C. Tribune.



DeMaime —S. C. Tribune.



—S. C. Tribune. Rossi

STEVE KERZIE

The smallest, scrappiest man on the team, Steve did a commendable job in holding his larger opponents in tow and doing his share of scoring.

DELBERT LANGSTAFF

Delbert is the fiery red-headed forward of the Maroons who hit the high in individual scoring with 113 points. "Red" has left school as a Junior to join the air corps and his position will be a hard one to fill next year.

ELMENDO ROSSI

When he felt like it, Rossi was capable of playing a good game. A Junior College transfer where he was high score man last year, Rossi made his first letter this year as a Junior.



Kerzie

Freshman Basketball

The Maroon yearlings, under the tutelage of Bernie Scherer, while they did not make a clean sweep of their schedule, compiled a very impressive record in winning ten out of their twelve starts. The addition of these men to the nine returning varsity members should form a combination which will be hard to beat in next year's competition.



Halford —S. C. Tribune.



Back Row—Held, Mathers, Schellenger, Stevens, Jones.
Front Row—Pepper, Obey, Snyder, Smith.

SEASON'S RECORD

| | | | |
|------------------------|----|-----------------------------|----|
| Morningside Frosh..... | 35 | South Dakota U. | 34 |
| Morningside Frosh..... | 47 | Metz Bakers | 35 |
| Morningside Frosh..... | 54 | Omaha | 48 |
| Morningside Frosh..... | 29 | South Dakota U. | 35 |
| Morningside Frosh..... | 40 | Omaha | 48 |
| Morningside Frosh..... | 34 | Sheldon Junior College..... | 21 |
| Morningside Frosh..... | 42 | Metz Bakers | 32 |
| Morningside Frosh..... | 57 | Elk Point | 35 |
| Morningside Frosh..... | 44 | Mann's | 40 |

"M" Club

The Morningside "M" Club is an organization consisting of letter winners in the three major sports, football, basketball, and track.

The club has a room in the basement of the gym where meetings are held and initiations take place. A campaign is now in progress for the raising of funds for furnishing the new "M" room, the former equipment room.

The "Men of the M" endeavor to maintain high standards of sportsmanship, develop strong physical specimens, and good moral characters.

OFFICERS

PresidentEdwin Adams
 Vice-PresidentSteve Smilanich
 Secretary-TreasurerGeorge Schiller

Back Row—Ballentine, Feikema, Hanson, McCoy, Loff, Scherer, Lease, Logue, Koch, Schiller, Rogers.
 Front Row—Smilanich, Hetland, Halford.



Back Row—Widler, Sheridan, Ott, Deiters, Jones, Steck, Spiry, DeMaine.
 Langstaff, Arnold, Rossi, Haenfler, Kennedy, Alvey.
 Front Row—Kerzie, Adams, Adcock.

Track

While not occupying the prominent spot that it once did, Morningside's track team is definitely on the up-grade. With a lone returning letterman, Vic Alvey, to form the nucleus of this year's team, Saundy has several new men who have past records which, if they mean anything, will prove to be very valuable.

Two of these new men, Steve Kerize and Dale Robar, along with a few football men who will toss the weights, should be point-getters in any competition.

Intramurals



BASKETBALL CHAMPS
 Back Row—Schrinsky, Sullivan, Macur, Walters, Wertz.
 Front Row—Wallen.

To supply the demand of the non-athletes, and athletes who do not have enough time to participate in full-time sports, Morningside has created a six event intramural schedule with John Litecky in charge.

The season started off with the touchball tournament which the Comets easily won. Following in close order was the horseshoe tournament taken by "Buck" Deiters. Intramural basketball, which aroused the keenest competition among the players and proved most interesting to the spectators to date, was also won by the Comets. It was a tough fight all the way and a "never say die" spirit was prevalent.

At the time the annual went to press, the ping pong and badminton tournaments were in full swing with the players about half through their schedule.

The final intramural sport of the year is kittenball, and with entries being signed up by the first of April, a promise of a season of tough competition is in store.

WOMEN'S ATHLETICS

Edna Cole



Miss Edna Cole has completed her first active year at Morning-side as Instructor of the Women's Athletic Department. She is a graduate of the University of Wyoming at Laramie, and has done graduate work at both the University of Michigan and the University of Wisconsin. Her favorite sports are riding, swimming and badminton. Miss Cole has gained great popularity on our campus through her enthusiasm and ability as a leader.

W. A. A.



Back Row—Wikert, Nelson, Forsberg.
Front Row—Brown, Cheely, Collier.

THE W. A. A. BOARD

The W. A. A. Board for the school year of 1940-1941 was composed of:

| | |
|---------------------------|--------------------|
| President | Marjorie Nelson |
| Vice-President | Frances Forsberg |
| Secretary | Mildred Wikert |
| Treasurer | Kathryn Brown |
| Volley Ball Chairman..... | Janice Collier |
| Basketball Chairman..... | Shirley Wallen |
| Awards Chairman..... | Frances Forsberg |
| Publicity Chairman..... | Winifred Cheely |
| Archery | Janice Collier |
| Badminton | Charlotte Robinson |
| Tennis | Janice Collier |

YALE-HARVARD

On March 25, the annual Yale-Harvard game was played. The two teams were selected for their playing ability, sportsmanship, and the completion of practice hours. The members were chosen by Miss Cole, Marjorie Nelson, Shirley Wallen, Lois Helm, Ruth Walker, Ruth Cowling and Frances Forsberg.

The game is the best of the season, as the two teams are evenly matched. Honorary basketball players are decided upon after this game has been played.

The members of Yale and Harvard teams:

Yale Team

Forwards
 Hope Faul
 Betty Lou Saunderson
 Joyce Roadman
 Kathryn Brown
 Guards
 Mildred Wikert
 Dorothy Willman
 Elinor Jacobson
 Dorothy Brown

Harvard Team

Forwards
 Ruth Kingsbury
 Lois Helm
 Mary Jane Hasbrook
 Winnifred Osbey
 Guards
 Shirley Wallen
 Faith Faul
 Harriet Kirby
 Ruth Walker

Intramural and Class Tournaments

Intramural and class tournaments were held as usual and the sports brought out many girls who were interested.

Volley ball and basketball both produced keen competition and proved to be very successful seasons.

This year the Kappa Zeta Chi sorority won the round-robin tournament in volley ball.

The tournament captains for volley ball were:

- Alpha Sigma—Charlotte Robinson.
- Kappa Pi Alpha—Helen Johnson.
- Kappa Zeta Chi—Janice Collier.
- Town Girls—Ruth Walker.
- Dorm Girls—Harriet Kirby.

This year's basketball round-robin tournament was won by the town team.

The tournament captains for basketball were:

- Alpha Sigma—Frances Forsberg.
- Kappa Pi Alpha—Ruth Cowling.
- Kappa Zeta Chi—Ruth Kingsbury.
- Town Girls—Ruth Walker.
- Dorm Girls—Lois Helm.

Besides these, there have been seasons in tennis, bowling, and badminton.



Back Row—Kirby, Forsberg, Cowling, Collier.
Front Row—Helm, Kingsbury, Walker.

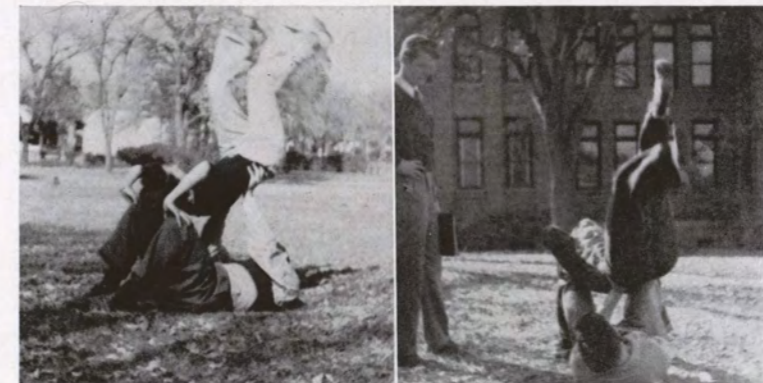
Sweater Winners



Left to Right—Cheely, Robinson, Wallen, Forsberg.

The highest award that the Women's Athletic Association confers upon a girl is the presentation of a white school sweater. Many requirements are necessary for this award, and it is a symbol of good sportsmanship, scholarship, and leadership. Last year's sweater winners were: Charlotte Robinson, Shirley Wallen and Winifred Cheely. The only sweater winner this year was Frances Forsberg.

Cheer Leaders



Abbey and Walensky.

DeVries, Brown, Haynes.

Yeah Maroon, Yeah White, Yeah Morningside, Fight. This familiar yell brings our cheer leaders to our minds. The following students served Morningside for all of the football and basketball games this last year: Helen Abbey, Ruth White, Kathryn Brown, Steve DeVries, Merton Haynes and Ted Walensky.

Health Week

The importance of good health was stressed during the annual health week, April 21 to April 25. Twenty-four good posture tags were awarded in Monday chapel to those students having the best posture in college. These tags were given during Monday chapel along with a speaker on health.

The King and Queen of Health were presented to the students in the Friday chapel. The 4-H requirements were the basis upon which the health winners were chosen. Friday chapel was under the sponsorship of the W. A. A. and the "M" Club.

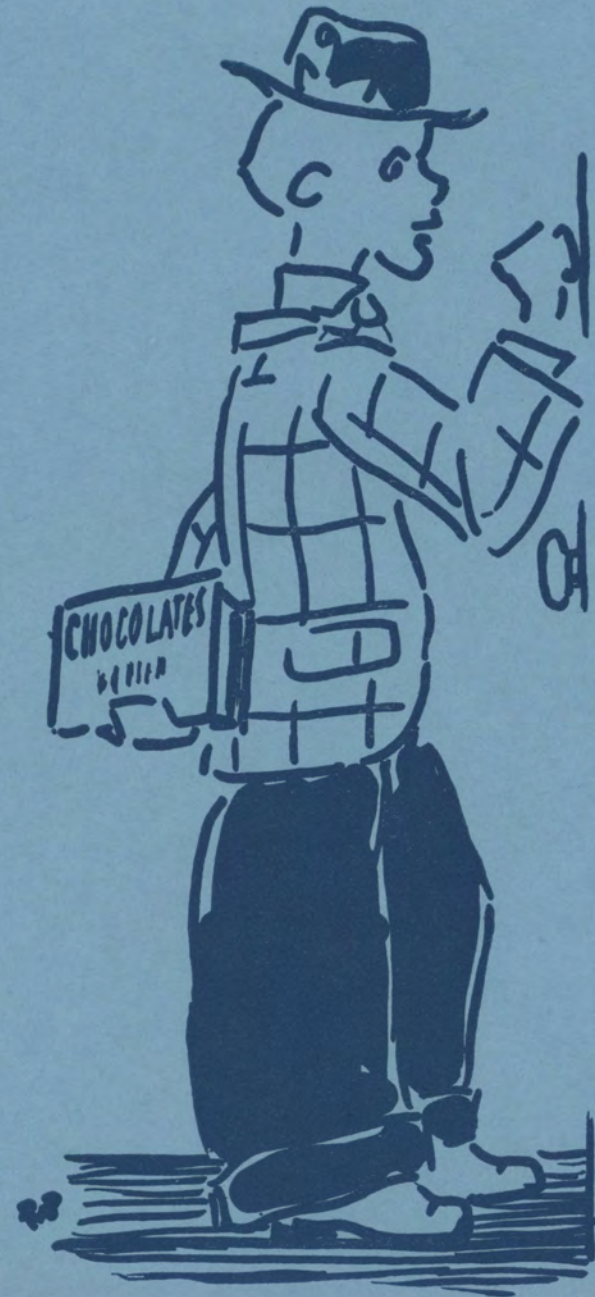
Orchesis

Orchesis, the modern interpretive dance club, was just organized last year. The officers are:

| | |
|---------------------------|------------------|
| President | Winifred Cheely |
| Vice-President | Frances Forsberg |
| Secretary-Treasurer | Dorothy Carrigg |

Last year the spring festival was climaxed by a dance given by this organization. This year the entire program is under the direction of the club. All of the dances which are being presented have been composed by the girls in Orchesis. The festival this year will be worked around a patriotic theme.

FEATURES





Miss Ruth Kingsbury

Miss Ruth Kingsbury was elected by the student body as their choice for Morningside's Most Beautiful Co-ed. One election was held when every girl in school was eligible for this honor. Because the votes were so close, the top five girls were then voted on again. These girls were Miss Kingsbury, Betty Schunck, Betty Lou Saunderson, Mary Ann Gray, and Ruth White. Ruth, who is a junior and a member of Kappa Zeta Chi, was presented at the annual Senior Farewell Dance in the spring.

Homecoming



One-Hundred Twenty-two



Mildred Wikert



Betty Schunck

Miss Mildred Wikert was chosen to reign as Miss Morningside at the Homecoming Festivities this year. She was attended by Betty Schunck and Ruth Olsen. These girls are chosen by popular election, for beauty, personality and popularity, and are honored during the two-day celebration which includes a pep rally, barbecue, and snake dance. This year Bob Feller, famous pitcher for the Cleveland Indians, was the guest of Morningside College during Homecoming and led the grand march with Miss Wikert at the annual dance. Exceptionally nice weather made this year's Homecoming a great success.

One Hundred Twenty-three



Ruth Olsen

Representative Seniors



Miss Ruth Olson

Ruth began her leadership at Morningside by serving as President of Ishkoodah as a freshman. For the past three years she has served as secretary to the Dean of Women, besides entering into many activities, and holding positions of honor in several. She has been active in intercollegiate debate and was President of W. S. G. A. this past year. We are sure a successful future is in store for Ruth.

Representative Seniors



Mr. Fred Davenport

Fred has shown a wide variety of interests while attending Morningside, serving as a member of the debate team, and as editor of the college paper. He began his freshman year as President of his class and ended his senior year as President of the Student Body. Under his leadership a successful program was carried out the second semester.

Representative Seniors



Mr. Garrett Wallman

Being chosen President of the Student Body for the first semester this year is evidence of the popularity of Garry Wallman. During his term of office he provided a fine program of social activities. He was also active as a member of the Alpha Tau Delta Fraternity and served as President of that organization. His friendly spirit, his pep and personality have won for him many friends during his college years.

Representative Seniors



Miss Mildred Wikert

In being chosen as Miss Morningside, Millie was accorded the highest honor which any senior girl may receive. Her popularity is shown through the many offices she has held, among which have been President of Agora, Secretary of the Junior Class, and Vice-President of Kappa Zeta Chi. She has also served as Secretary to Dean Johnson for two years.

Representative Seniors



Miss Alice Scott

Morningside's own song bird! Always active in all musical circles, singing the soprano solo in the Messiah her junior year, Alice has also found time to make many friends among Liberal Arts students. With her charming personality, we are sure Alice cannot help but be successful.

Representative Seniors



Mr. Eugene Emme

During his four years at Morningside, Gene has entered into nearly every phase of college activity. He has sung for four years in the chapel choir, and this year served as the student manager of the annual trip. He has also been active in the Morningside Christian Association over which organization he presided as President. In closing a successful college career, he has served the Senior Class as President.

Prof. Shots



One Hundred Thirty

Easy GOING - -
for LESS!



You can't beat the downright convenience and economy of an Interstate bus for out-of-town trips to games, parties, conventions, or weekends at home. Convenient daily schedules let you come and go as you please, for less than HALF the cost of driving! You'll have more fun on every trip and save more to spend when you get there.

UNION BUS DEPOT

311 Sixth Street

Phone 5-7678

Chicago & North Western Stages
Interstate Transit Lines

CALENDAR

SEPTEMBER

- 16—Salute to the Freshmen! Bigger and better than ever before.
- 20—Classes begin. Most of the professors changed texts and here we are stuck with another year's supply. The annual Campus Sister tea at the Dorm acquaints freshmen with the upperclass women.
- 21—Social festivities are inaugurated with an All College dance.
- 25—Matriculation address by Dr. Roadman.
- 28—First football game of the season, Morningside vs. Midland. Nile Kinnick supplied between-half interest.

OCTOBER

- 4—Annual faculty reception.
- 5—A crowded schedule climaxed with a football game, sorority pledge formals, and rain all in the same evening.
- 8—Freshman-Sophomore day. After much dispute and doubt about the outcome the Freshmen emerged victorious.
- 17—Sioux City girls see how the other half lives at the tea held for them by Dorm girls.
- 18—Zet annual formal open house.
- 23—Richard Crooks at the Concert Course.
- 25—Millie Wikert crowned Miss Morningside at the Homecoming pep meeting. The Pi's turned footballers for the evening.
- 26—Successful homecoming game, Morningside vs. Omaha U. Bob Feller was King of events with Ralph Brown a close second.

NOVEMBER

- 8-9—Students and faculty became jurymen for "The Night of January 16."
- 9—Parent's Day. The second year for something that promises to become tradition.
- 14—Psychology Night.
- 16—Morningside students turn into Lil' Abners and Daisy Maes for the Sadie Hawkins dance. Dorothy Gartner got her man.
- 18—Religious Emphasis Week. Dr. Schlipp was the man of the week.
- 23—Dorm formal.

DECEMBER

- 2—End of Thanksgiving recess.
- 3—The first of a series of tea dances is given at the dorm.

WISGERHOF'S GRILL

FOUNTAIN SERVICE

Lunches • Cigarettes

PETERS PARK

Phone 6-5451

South with the Choir



One Hundred Thirty-two

PROFESSIONAL GUIDANCE

Whether your particular problem is concerned with savings, checking, loans or any other bank service First National is prepared to offer you a solution.

First National Bank

IN SIOUX CITY

Member Federal Deposit Insurance Corporation

J. C. RENNISON FLORAL CO.

516 Nebraska Street
SIOUX CITY, IOWA

WIRE FLOWERS ANYWHERE

Bonded Member F. T. D.

"Say It with Flowers"

ANDERSON'S BAKERY

Morningside's High Class

Pastry Shop

At Peters Park

Phone 6-5966

Between Classes . . .

DRINK

Coca-Cola

In Bottles

It's the Refreshing Thing to Do

Chesterman Co.

Ben Franklin Stores

4006 Morningside Ave. Peters Park

"Your Dime Store at Peters Park"

Everything from Five Cents to
One Dollar and Up

T. L. SCHAEFER, Proprietor

FRANK'S CAFE

Lady cooks have a style of cooking which appeals to our restaurant-going public. The food tastes like a home cooked meal and that means a lot.

GLASS FRONT

607 Pierce Street

Sioux City

Caught Off Guard



One Hundred Thirty-four

PAUL A. WARNER
President and General Manager

Adair-Warner Printing Co.

Printing with Service

516 Sixth Street

Phone 8-7831

Sioux City, Iowa

THE Council Oak Stores

Better Foods for Better Living

IOWA :: NEBRASKA :: SOUTH DAKOTA :: MINNESOTA

KODAKS

Developing and Printing
HOME MOVIES

Eastman Kodak Stores, Inc.

608 Pierce Street
SIOUX CITY

Student's Store

Make our drug store your drug store.
You will find lowest prices in town,
plus that personal touch with
super service added.

Barney's Morningside Pharmacy

The Rexall Drug Store



WOODBURY COUNTY SAVINGS BANK

Everything for Programs

PLAYS
PAGEANTS
READINGS
OPERETTAS
STUNTS

WETMORE DECLAMATION BUREAU

1631 South Paxton Street
SIOUX CITY, IOWA

One Hundred Thirty-five

Campus Snoopshots



One Hundred Thirty-six

Do You Know . . .

- That the greater your training and earning capacity, the more your vision is worth?
- That the average student will leave high school with a potential earning capacity of \$60,000, and, if a college graduate, with a \$100,000 potential earning capacity, provided vision remains near normal?
- You can't have a good earning capacity without good vision. Nature intended your eyes to work under good light. You should use not less than a 100-watt bulb in the lamp under which you do your studying, reading or other close work.

Sioux City Gas & Electric Company

CALENDAR—(Continued)

- 5—Pre-engineers night.
 - 7—Tau Delt Christmas Party.
 - 10—Festival of Nations, dinner at the Dorm sponsored by Cosmopolitan Club.
 - 13—All-College Winter Formal.
 - 16—Messiah. Morningside is ably represented, as usual.
 - 17—Morningside students put on a style show in Orpheum theater.
 - 18—Christmas Dinner at the Dorm. All out-of-town girls were invited.
 - 20—Winter recess begins.
- JANUARY**
- 10—Sport dance at the Dorm.
 - 17—Ishkoodah has their Winter Formal and Alpha Sigma an informal.
- 27—Final Exams begin. What, again? Boom in the aspirin industry.
- FEBRUARY**
- 3—Classes begin for second semester.
 - 15—Sororities pledge for second semester.
 - 17—Student Friendship and Hwa Nan Week. Handsome Paul Moritz made the feminine half of the student body Chinese conscious.
 - 22—Agora sponsored their annual Carnival.
 - 24—The choir gives the home concert.
- MARCH**
- 4-5—New Outlook Days give a parade of student personalities.
 - 6-7—"Wingless Victory" makes a big hit and shows how capable the dramatic department is.

BETTER YOUR SCORE

by using

A. J. Spalding & Bros.

Athletic Equipment

DWIGHT HAUFF SPORTING GOODS

511 Pierce Street

Phone 8-1877

Some of the Gang



One Hundred Thirty-eight

The Favorite Candy of the Northwest . . .

La Fama CHOCOLATES

One of a Family of Famous Chocolates

Made by

Johnson Biscuit Company

Sioux City, Iowa

MAKE

THE TOY NATIONAL BANK

YOUR BANK

Intelligent and Conservative Banking Since 1873

Member Federal Deposit Insurance Corporation

Flowers for All Occasions

Ferris Florist

Warrior Hotel

Phone 8-7554

A GLASS OF MILK
for
PEP AND GOOD HEALTH

MILK AND ICE CREAM

DEALERS

of Sioux City

NEHI — SIOUX CITY

Bottlers of

NEHI • PAR-T-PAK

ROYAL CROWN

Campus Combinations



One Hundred Forty

SINCE 1918

VERSTEGEN HAS LEAD
 IN THE PRODUCTION OF
 BETTER YEAR BOOKS
 FOR SCHOOLS « « «



"Across from the Court House"
in Sioux City, Iowa

Odds and Ends



One Hundred Forty-two

SECURITY
NATIONAL BANK
of Sioux City

Member F. D. I. C.

CALENDAR—(Continued)

- 8—Kappa Pi Alpha men's formal.
- 12—Miss Metz and Mrs. Kinney gave a two piano recital.
- 14—All college dance.
- 17—Devere Allen explains the European situation.
- 19—Manuscript Club has a birthday banquet complete with cake and candles.
- 22—Kappa Zeta Chi formal.
- 25—Yale-Harvard game. Either team could beat the varsity in the beauty contest.
- 28—Freshmen Dorm girls' party.
- 31—Helen Jepson at the Concert Course.

APRIL

- 3—Home Band Concert—some good music and some — puns.
- 4—Tau Delt formal.

- 10—Easter Recess begins, and THE RAINS departed.
- 19—Pre-engineers' formal.
- 21—Health Week.
- 26—Beaux Arts Ball.

MAY

- 2—May festival and the crowning of the May Queen.
- 3—Dorm spring formal.
- 10—Mother-Daughter banquet. A bevy of attractive daughters and equally attractive mothers.
- 17—Alpha Sigma and Ishkoodah formals.
- 26—Finals begin.

JUNE

- 1—Baccalaureate.
- 3—Commencement—ending to a happy school year.

DUSTY'S
PARK LUNCH
 BREAKFASTS : LUNCHES
 DINNERS

Swift and Courteous Service
 PETERS PARK

Grayson's
SUITS ME

415 Fourth Street
 SIOUX CITY, IOWA

CRAFTSMANSHIP



BIERMAN ENGRAVING CO.
MAKERS OF PERFECT PRINTING PLATES
304 PIERCE ST. - - - SIOUX CITY, IA.

