

378 7774  
M 82 85  
1945



Library



50984

Accession

Class 378.777

Book M828A/ 1945

Morningside College Library



511 0079173 1

# MORNINGSIDE COLLEGE

Presents The

DATE DUE

~~1111 1 1 1994~~  
OCT 26 2008

AT RESERVE DESK

378.7774 50984  
M828s Morningside College  
1945 The Sioux

*Sent notice 6-10-87*

AT RESERVE DESK

378.7774 50984  
M828s Morningside College  
1945 The Sioux

# Sioux

45

GAYLORD

PRINTED IN U.S.A.



378.7774  
M 8282  
1945



EV. 462

*Editor* - - - - - BONITA HAHN  
*Assistant Editor* - - - - - MARGARET RALSTON  
*Business Manager* - - - - - GUS LEASE  
*Faculty Advisor* - - - - - DR. T. E. TWEITO

MORNINGSIDES COLLEGE  
1945-1946

50984





Grace  
Methodist  
Church



Women's  
Residence  
Hall







Prexy Lodge



Alumni Gymnasium



The Barn



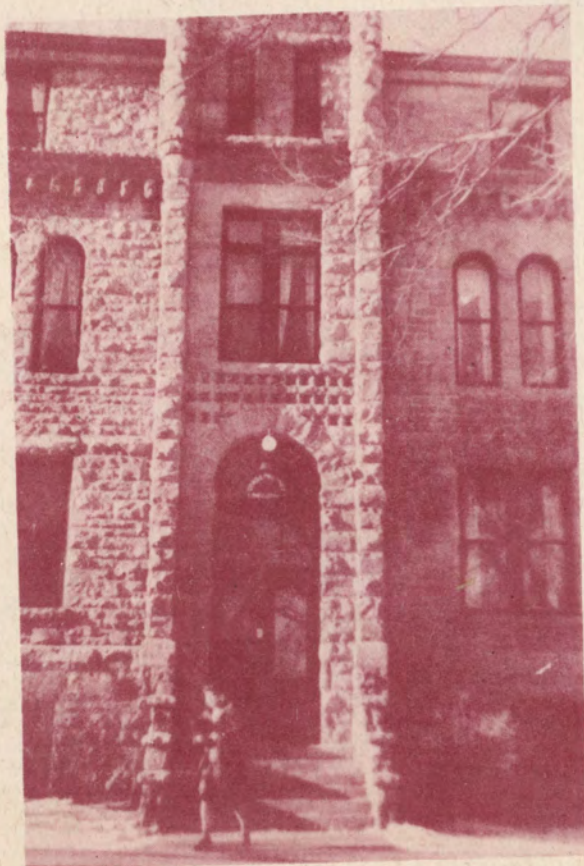
Bass Field







Main Hall

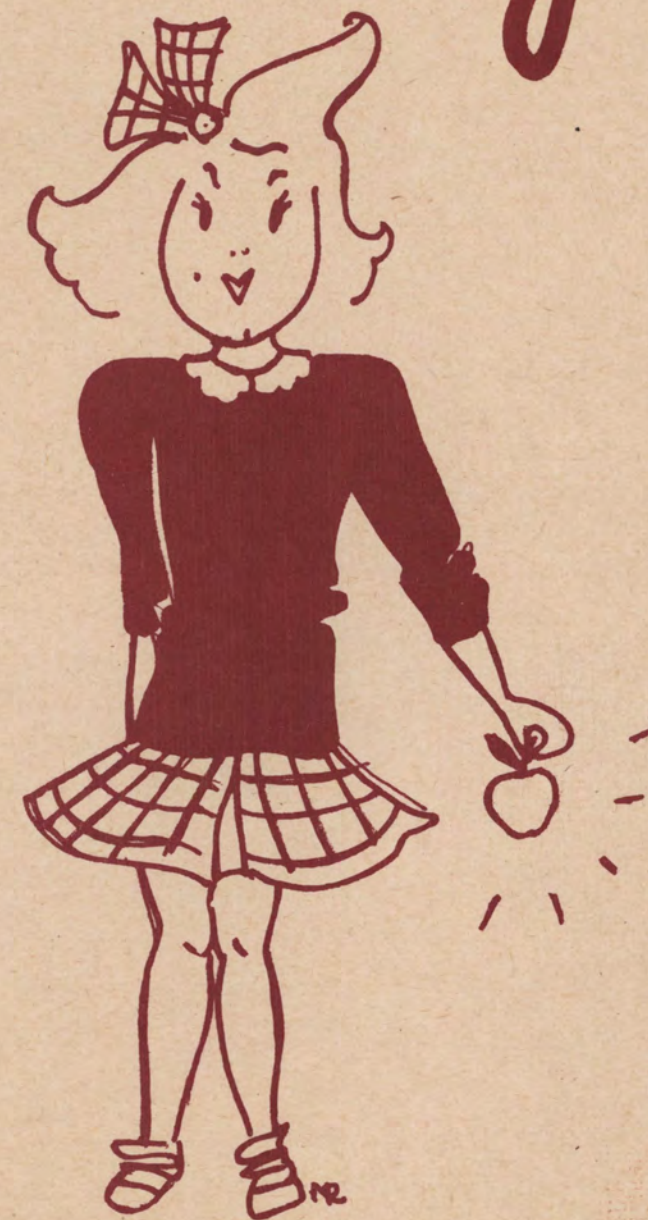


Conservatory





# Faculty

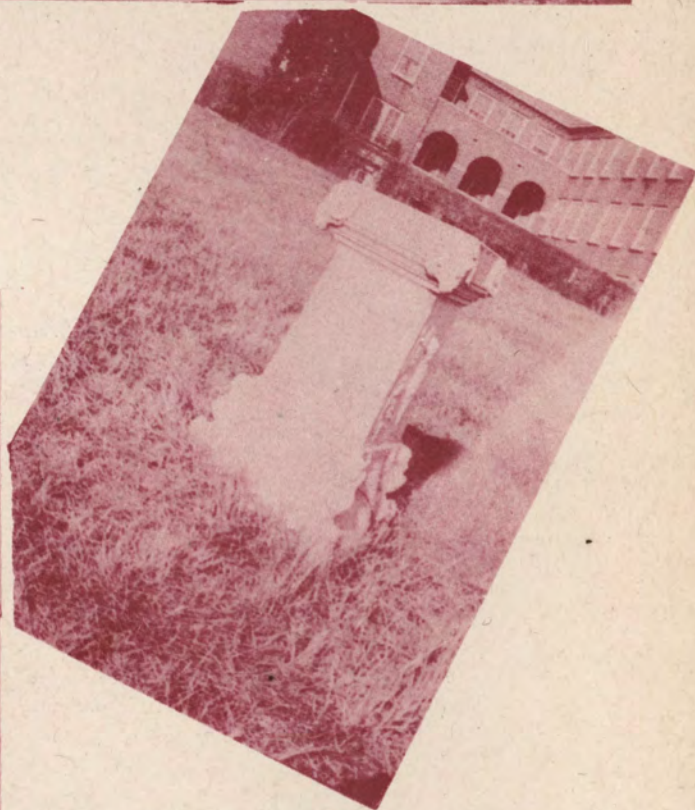


Circle Drive



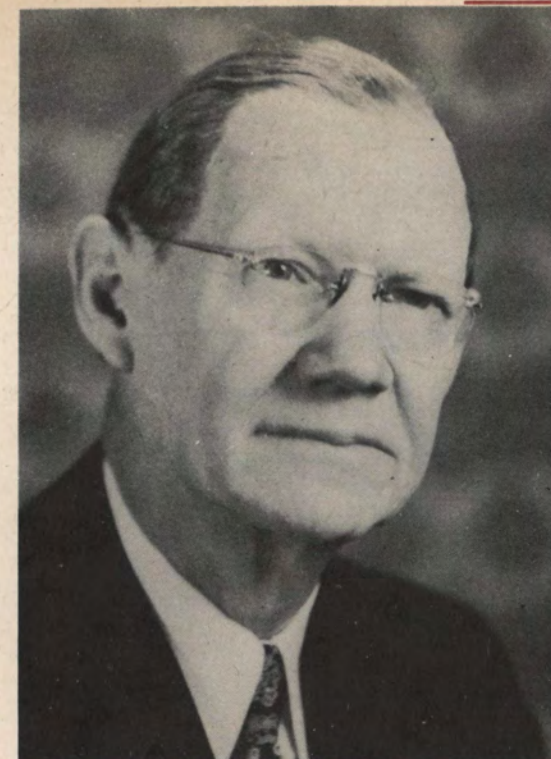
Spoonholder

Lewis Elm



Sundial.





Dr. Carl Alan Roadman  
 D. D., D. D., L. L. D.  
 President of Morningside College





## BOARD OF TRUSTEES

### OFFICERS

D. W. Stewart, President, Sioux City, Iowa  
 \*H. I. Down, First Vice-President, Sioux City, Iowa  
 \*John Kolp, Second Vice-President, Manson, Iowa  
 R. J. Sweet, Secretary, Sioux City, Iowa

### TRUSTEES OF HONOR

Emil Bergeson, Manager, Mid-West Live Stock Commission Co., Sioux City, Iowa  
 C. C. Harshbarger, Bank Receiver, Onawa, Iowa  
 J. N. Hughes, Attorney, Des Moines, Iowa  
 A. W. Jones, Banker, Cherokee, Iowa  
 Mrs. C. F. Long, Housewife, Sioux City, Iowa

### TERMS EXPIRE 1945

H. M. Burns, Minister, Sioux City, Iowa  
 J. C. Buthman, Minister, Sioux City, Iowa  
 L. D. Havighurst, Superintendent Fort Dodge District, Fort Dodge, Iowa  
 Ray J. Harrington, Physician and Surgeon, Sioux City, Iowa  
 Leon Hickman, Attorney, Pittsburg, Pennsylvania  
 Francis Kingsbury, Banker, Ponca, Nebraska  
 \*John Kolp, Insurance, Manson, Iowa  
 W. H. Lease, Minister, Correctionville, Iowa  
 L. H. Scheerer, Superintendent Sheldon District, Spencer, Iowa  
 C. S. Van Eaton, Merchant, Sioux City, Iowa  
 Miss Rae Wetmore, Play Publisher, Sioux City, Iowa

### TERMS EXPIRE 1946

Frank G. Bean, Superintendent Sioux City District, Sioux City, Iowa  
 W. L. Breaw, Minister, Humboldt, Iowa  
 C. H. Brechlin, Manager Kresge Store, Sioux City, Iowa  
 C. W. Britton, Investment Banker, Sioux City, Iowa  
 F. E. Burgess, Superintendent Algona District, Algona, Iowa  
 G. W. Dunn, Minister, Sioux City, Iowa  
 H. Clifford Harper, Attorney, Sioux City, Iowa  
 Ralph C. Prichard, District Judge, Sioux City, Iowa  
 R. F. Roach, Manager J. C. Penney Company, Sioux City, Iowa

### TERMS EXPIRE IN 1947

Frank G. Bean, Superintendent of Sioux City District, Sioux City, Iowa  
 F. E. Burgess, Superintendent of Algona District, Algona, Iowa  
 J. C. Buthman, Minister, Sioux City, Iowa  
 \*Lt. Col. H. I. Down, United States Army  
 J. A. Farnham, Minister, Webster City, Iowa  
 Parnell Mahoney, Sioux City Brick & Tile Company, Sioux City, Iowa  
 C. N. Smith, Manager of Weatherwax Clothing Company, Sioux City, Iowa  
 D. W. Stewart, Attorney, Sioux City, Iowa  
 Harold P. Winter, Life Insurance, Cincinnati, Ohio



**Alma Telf**  
 B. A., M. A.  
 Instructor of Orientation  
 Dean of Women



**William J. Scarborough**  
 A. B., A. M., S. T. B., Ph. D.  
 Professor of Philosophy and  
 Religion  
 Dean of the College



**Myron Earle Graber**  
 A. B., A. M., Ph. D., D. Sc.  
 Professor of Physics  
 Dean of Men







RUTH BUTTS  
B. S., M. S.  
Head of  
Dramatics and Speech



KATHRYN PRICE CLAYTON  
Mus. B.  
Instructor in Pianoforte



RICHARD CLAYTON  
Mus. B.  
Instructor in Violincello



JAMES A. COSS  
B. S., M. S.  
Professor of Chemistry

LILLIAN ENGLISH DIMMITT  
A. B., A. M., L. H. D.  
Professor of Ancient  
Languages  
Dean of Women Emerita

FRANCIS JENNEWEIN ELTON  
B. S.  
Instructor of Band and  
Instrumental Music

CLARA ASMUS GRAY  
Mus. B.  
Instructor in Pianoforte

IRA J. GWINN  
Registrar  
Administration Secretary  
Assistant Professor of Physics

HORACE B. HAWTHORNE  
B. S., M. S., Ph. D.  
Instructor in Sociology

J. E. KIRKPATRICK  
A. B., A. M., Ph. D.  
Professor of Education

ETHEL T. KUCINSKI  
Mus. B.  
Instructor in Pianoforte



ELIZABETH N. MACCOLLIN  
Mus. B., A. B.  
Instructor in Voice



PAUL MACCOLLIN  
A. B., Mus. B.  
Director of the Conservatory  
of Music  
Professor of Voice



MARCIA MCNEE  
A. B., A. M.  
Assistant Professor of Education

MENDAL MILLER  
A. B., A. M.  
Professor of Economics and  
Sociology

MIRAH MILLS  
A. B., A. M.  
Professor of English







• ETHEL MURRAY  
A. B., A. M.  
Ass't Professor of History



MRS. VERLEY NEWSOME  
B. S.  
Physical Education

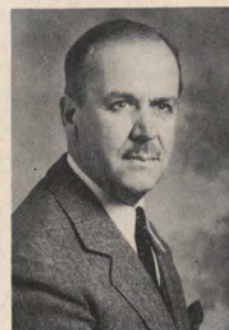


ROCCO PESILE  
Instructor in Violin



HENRI PENSIS  
Mus. M.  
Head of Violin

JAMES REISTRUP  
Mus. B.  
Head of Pianoforte  
Department



GRACE PEARL SMITH  
A. B., M. A.  
Instructor in Art



THOMAS C. STEPHENS  
A. B., M. D.  
Professor of Biology

JEANNE TIMM  
B. S. M.  
Woodwind Instructor

THOMAS E. TWEITO  
A. B., A. M., Ph. D.  
Professor of History

ROBERT N. VANHORNE --  
Ph. B., L. H. D.  
Professor of Mathematics

FAITH FOSTER WOODFORD  
A. B., Mus. B.  
Piano Forte, Music, and  
English

STELLA D. YATES  
B. S., M. S.  
Secretarial Science



BEATRICE BERGH  
A. B., A. M.  
Supervisor of Practice  
Teaching  
East Junior High School

DR. C. F. BERKSTRESSER  
M. D.  
College Physician



MRS. CLINTON E. BURRIS  
Assistant Librarian



CLINTON E. BURRIS  
A. B.  
Librarian

MRS. SAM CARTER  
Assistant Registrar

MRS. BONNIE FREDRICKSON  
Cashier





MRS. GRAFTON  
B. S.  
Dietician  
Internship at Okla.. A. M.



MRS. MAE MACARTHUR  
Bookkeeper



MRS. J. PATCH  
R. N.  
College Nurse



H. J. RAUN  
Superintendent of Buildings  
and Grounds

EARLENE SCHENCK  
Personnel Office Secretary

ROY J. SWEET  
Assistant Business Manager



## PHOTO-PHOBICS

DEAN J. EVANS  
Income Taxes

HARRY F. KANTHLENER  
A. B., A. M.  
Professor of Romance  
Languages

DAVID SINGER  
Business Law

MRS. M. E. GRABER  
Botany

ROY LANGLEY  
Art

O. F. SLETWOLD  
Spanish

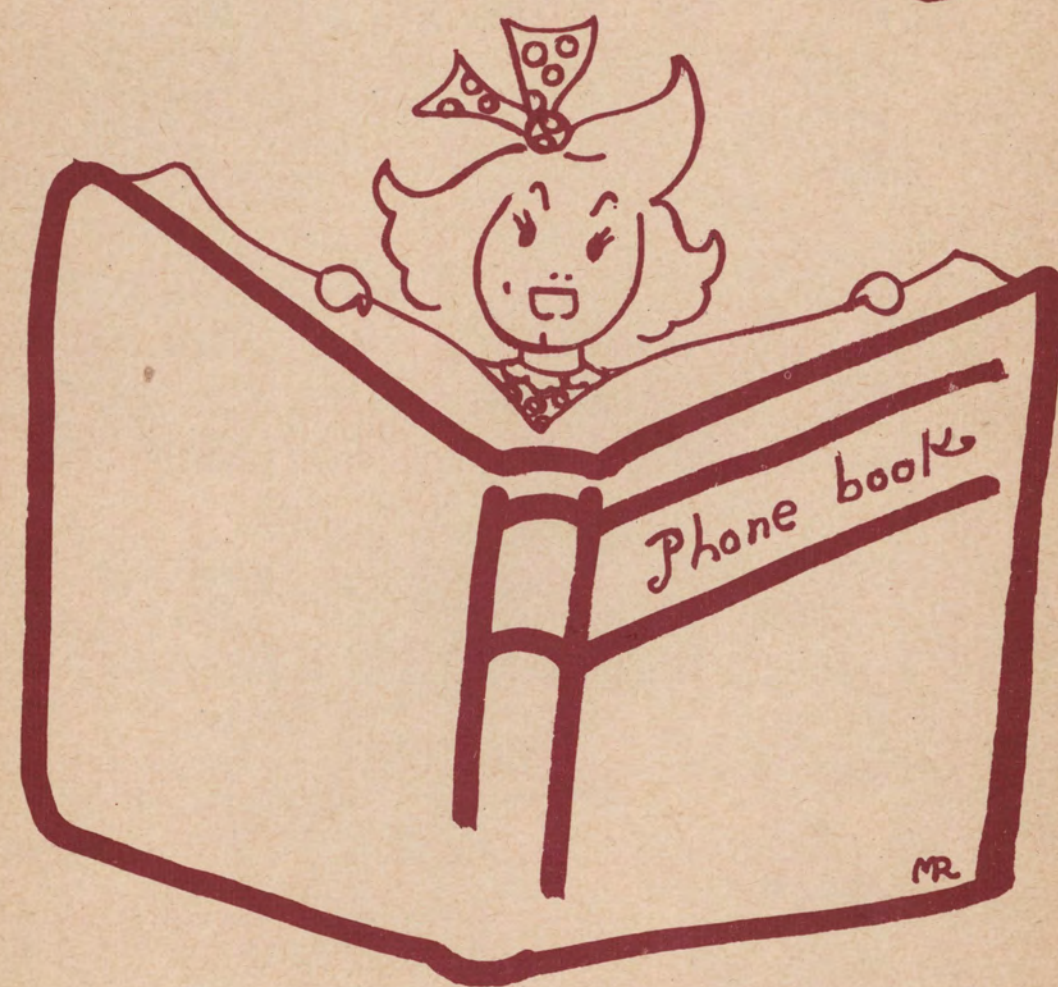
H. W. HARTMAN  
B. A., M. A.  
Admissions Counselor

MRS. LYNCH  
Dormitory, House Mother

JOHN S. WOODSON  
Journalism

PARNELL MAHONEY, JR.  
Economics

# Students







# SENIOR OFFICERS

<i>President</i>	- - - - -	MELVA TIEMENS
<i>Vice-President</i>	- - - - -	ARLENE DORNBUSCH
<i>Secretary-Treasurer</i>	- - - - -	JEANETTE KAHOUN
<i>Student Council Representative</i>	- -	LEONE SARGEANT

Adm.







SIUX

MARCILLE BOHN

B. A.

Spirit Lake

Kappa Zeta Chi 2, 3, 4, Treasurer 3, Critic 4, Cor. Sec. 4; Ishkoodah 1; Collegian Reporter 1, 3, 4, Editor 4; Student Council 3, 4; Collegiate Players 1, 3, 4; F.T.A. 2, 4; Board of Control 3, 4; Agora 1, 2, 3, 4.

"Something attempted, something done"



BETTY BOLES

B. A.

Sioux City

Kappa Pi Alpha, Treasurer 4; Ishkoodah 1; F. T. A. 4; Majorette 1; Majorette Club 4.

"Taps on her toes"



BETTE ANNE CAIRY

B. A.

Sioux City

Kappa Zeta Chi 2, 3, 4, Pres. 4, Recording Sec. 3, Soc. Chm. 3, Critic 2, 4; Ishkoodah 1; W.A.A. 1, 2, 3; Vice Pres. Agora 2, 3, 4, Pres. 4; Intersority 3, 4; Sigma Tau Delta 4; Student Council 3, 4; F.T.A. 4; Sec. Treas. Jr. Class.

"Which has priority—my Zet or 'A' pin?"



RALPH CLAYTON

B. S.

Sioux City

Pre-Engineers 2, 3, 4; Sioux 4.

"See the birdie—click!"



ARLENE DORNBUSCH

B. S. M.

Paulina

Alpha Sigma 3, 4, Vice Pres. 4; Junior Class Pres.; Senior Class Vice Pres.; W.S.G.A. 2; Band 1, 2, 3; Mu Phi Epsilon 2, 3, 4, Treas. 4; F.T.A. 2, 3, 4, Sec. 3, Treas. 4; Y. W. C. A. 4; Junior Recital; Senior Recital; Board of Control 3; Agora 1, 2, 3, 4.

"Watts' more important than Bob?"

CORRINE COOLEY

B. A.

Sioux City

Ishkoodah 1; Sigma Tau Delta 4; F.T.A. 4; M.F.T.C. 4; Agora 1, 2, 3, 4.

"Busy, diligent and scholarly"

LOIS EMME

B. A.

Mitchell, S. D.

Kappa Zeta Chi 2, 3, 4, Reporter 3, Treas. 4; Vice Pres. 4; Cheer Leader 1, 3, 4; W.A.A. 1, 2, 3, 4, Sec. 2, Vice. Pres. 3; Attendant to May Queen 1; Student Council 1, 4, Sec. 4; Ishkoodah 1; Y.W.C.A. 4; M.F.T.C. 4; Freshman Class Pres.; Junior Class Sec.; Yale-Harvard 3, 4; Majorettes 4; Agora 1, 2, 3, 4.

"Make way for the Navy Man's gal!"

JOHN GRIFFIN

B. S.

Sioux City

Pre-Engineers Club 1, 2, 3, 4, Chief Cook 2, 3, Pres. 3; Y.M.C.A. 2, 3, Pres. 3, Social Chairman 2; Religious Life Committee 2, 3; Social Life Committee 3; Business Manager Collegian Reporter '43-'44; Sioux '44-'45.

"He has a difficulty for every situation"



EILEEN GUSE

B. S. M.

Sanborn

Alpha Sigma 2, 3, 4, Recording Sec. 4; Choir 3, 4; F.T.A. 4; Y. W.C.A. 4; Inter-Sorority Council 4; Agora Representative 4; Collegian Reporter 4; Ishkoodah 1; Agora 1, 2, 3, 4.

"Three tardies make an absence—Oh dear!"



BONITA HAHN

B. S. M.

Sioux City

Alpha Sigma 2, 3; College Choir 1, 2, 3, 4; Band 1, 2, 3, 4, Ass't Dir. and Lib. 4; Symphony 3, 4; Sioux 1, 2, 3, 4, Editor 4; Collegian Reporter 2; Collegiate Players 3, 4; Grace Collegians 1, 2, 3, 4, Vice Pres. 2, 3; Mu Phi Epsilon 3, 4, Chaplain 3, Rec. Sec. 4; Y. W.C.A. 3, 4; M.F.T.C. 4; Rel. Emphasis Week 3, Agora 1, 2, 3, 4.

"She's a 'Bonnie' lass"



LOIS HELD

B. S.

Hinton

Kappa Zeta Chi 2, 3, 4, Reporter 2, Critic 3, Vice Pres. 4, Treas. 4; Agora 1, 2, 3, 4; W.A.A. 1, 2, 3, 4, Vice Pres. 3; Collegian Reporter 2; Sioux 2, 3, 4; Inter-Sorority Council 4; Health Queen 3; Yale-Harvard 2, 3; M.F.T.C. 4; Majorettes President 4.

"A good sport and good in sports"



IRENE HINRICHS

B. A.

Humboldt

Alpha Sigma 4; Drum Majorette 1; M.F.T.C. 2, 3, 4; M.C.A. 1; Y. W.C.A. 3, 4; Band 1; Ishkoodah 1; Agora 1, 2, 3, 4.

"Friendly, likeable and jolly"

ROSEMARY HUXTABLE

B. A.

Sioux City

Sigma Tau Delta 3, 4, Vice Pres. 4; Manuscript 3, 4, Pres. 4; Biology Club 3, 4, Treas. 3; Beta Beta Beta 3, 4, Sec. 4; M.C.A. 1; Ishkoodah 1; Collegian Reporter 2; Agora 1, 2, 3, 4.

"Fun is her middle name"

SIUX







SIUX

MILDRED JENSEN  
B. A.  
Salix

Ishkoodah 1; Agora 2, 3, 4; Col-  
legiate Players 1; Collegian Report-  
er 4; Sioux 4; Eta Sigma Phi 3, 4.  
"Danger, 5500 volts!"



HARRIET KEITH  
B. S. M.  
Algona

Alpha Sigma 2, 3, 4, Pres. 4; Mu  
Phi Epsilon 4; Warden 4; Inter-  
Sorority Council 4; M.F.T.C. 2, 3,  
4, Pres. 3; Y.W.C.A. 3, 4; At-  
tendant Miss Morningside 4; Band  
1, 2, 3, 4; Choir 1, 2, 3, 4; Sioux  
4; Collegian Reporter 3; Student  
Council 4; Agora 1, 2, 3, 4.  
"No trait more striking than com-  
mon sense"



TED LEKAS  
B. A.  
Sibley

Band, 1, 2, 3, 4; Choir 2, 3, 4;  
Cosmopolitan Club 1, 2, 3, 4.  
"Bored of Education"



ENID NEAL  
B. S. M.  
Moorhead

Mu Phi Epsilon 2, 3, 4, Alumni  
Sec. 2, Treas. 3, Pres. 4; Band 1,  
2; Symphony 2, 3, 4; Symphon-  
ette 4; Agora 1, 2, 3, 4.  
"Her fiddling is not all that's nice"



JEANETTE KAHOUN  
B. A.  
Sioux City

Kappa Zeta Chi 2, Soc. Chm. 4,  
Corres. Sec. 3; F. T. A. 3, 4; Sr.  
Class Treasurer; Ishkoodah 1;  
Agora 2, 3, 4; Student Council 4.  
"Something for my hope chest!"



GUS LEASE  
B. S. M.  
Sioux City

Choir 1, 2, 3, 4; Bus. Mgr. Sioux,  
'44, '45; Band 2; Madrigal Sing-  
ers 1, 2, 3, 4; Phi Mu Alpha 1, 2,  
Pres. 2; Men's Quartet 2, 4; Col-  
legiate Players 3, 4; Symphonette  
Soloist 4; Messiah Soloist 3, 4; Eli-  
jah Soloist 4.  
"A musical 'Vic'-tory"



EVELYN MADSEN  
B. A.  
Sioux City

Kappa Zeta Chi 2, 3, 4, Social Chm.  
3, Sec. 4, Pres. 4; Ishkoodah Sec.  
1; Collegiate Players 2; Pep Club  
1; W.A.A. 2, 3; Collegian Reporter  
4; Agora 1, 2, 3, 4; Agora Vice  
Pres. 4; Student Body Pres. 4;  
WHO'S WHO 4.  
"She's the spirt of fun, and gets  
things done!"



MARY BEATRICE NORRIS  
B. S. M.  
Sergeant Bluff

Northwestern University 1, 2; Choir  
3, 4; Kappa Chi 3, 4, Vice Pres.  
3; Cosmopolitan Club 3, 4; Inter-  
national Relations Club 3; Y.W.  
C. A. 3; Agora 3, 4.  
"To speak, for me, is to sing"



ROCCO PESILE  
B. S. M.  
New York City

Symphony 3, 4; Symphonetta 4;  
Director of Band 4.  
"Florence, that's m' wife!"



LEONE SARGEANT  
B. A.  
Sioux City

Kappa Zeta Chi 2, 3, 4, Treas. 3,  
Critic 4; Collegian Reporter 4; Ish-  
koodah 1; Sioux Queen 1; Major-  
ettes 4; Student Council 4; Agora  
1, 2, 3, 4.  
"Morningside furnished a 'Barr'  
for her"



MELVA TIEMENS  
B. A.  
Archer

Kappa Pi Alpha 2, 3, 4, Cor. Sec.  
3, Soc. Ch. 3, Pres. 4; Senior Class  
Pres.; Agora 1, 2, 3, 4; Student  
Council 4; W.S.G.A. 3, Sec. 3;  
Y.W.C.A. 3, 4, Sec. 4; Yale-Har-  
vard 3; M.C.A. 1, 2; Kappa Chi 3;  
Collegian Reporter 3; Choir 2, 3,  
4; M.F.T.C. 4, Pres. 4; Ishkoodah  
1; John P Hantla Scholarship; In-  
ter-Sorority Council 4.  
"A good gal with good grades"



ELMER H. VANDER BERG  
B. S. January  
Orange City

Alpha Tau Delta, '42; Biology  
Club, '41, '42; Berea College, V-  
12 Unit, 3rd year; University of  
Detroit, School of Dentistry, '44-45.  
"The navy does us honor"



BEVERLY REHNBLOM  
B. A.  
January '46

Kappa Zeta Chi 2, 3, 4, Chaplain  
3, Directress 3, Sec. 4; Eta Sigma  
Phi Pres. 3; Sigma Tau Delta 3;  
Ishkoodah Sec. 1; Student Council  
Treas. 3; Sioux Editor 3; Col-  
legian Reporter 3, 4; Manuscript  
Club 2, 3, Vice Pres. 3; Board of  
Control 2; W.A.A. 2, 3; Choir 1,  
2; Agora 1, 2, 3, 4; Health Queen  
1; Collegiate Players 2, 3; Yale  
Harvard 1, 2, 3; Freshman Scholar-  
ship; Junior Scholarship; WHO'S  
WHO 4.  
"Proof that one can be intelligent  
and popular too"



LYLA HANSEN SPRINGER  
B. A.  
Battle Creek

Chadron State Teachers 1; Kappa  
Zeta Chi 3, 4, Chaplain 4, Critic  
4; Agora 2, 3, 4; Student Council  
4; Cheer Leader 2, W.A.A. 3, 4,  
Pres. 4; Attendant Miss Morning-  
side 4.  
"Tops with Springer and tops with  
us!"



BERNARD TRAVAILLE  
B. A.  
Ocheyedan

Midland College 1, 2, 3; Kappa  
Chi 4, Vice Pres. 4; Collegiate  
Players 4.  
"No sinner no saint—just a right  
guy"



PHYLLIS VANDE BRAKE  
B. A. August  
Sioux Center

Northwestern Junior College 1;  
Kappa Pi Alpha 3, 4, Hall Ch. 4;  
W.S.G.A. 4; Y.W.C.A. Pub. Ch.  
4; Agora 3, 4.  
"Sweet and sincere and quiet about  
it"



SIUX





MARY MARGARET WEATHERBY  
B. A.

Denison

Phi Sigma Iota 3, 4, Pres. 4; Col-  
legiate Players 1, 2, 3, 4; Agora  
1, 2, 3, 4; Ishkoodah 1; W.A.A.  
1, 2, 3, 4, Soc. Ch. 2; M.C.A. 1,  
2; Y.W.C.A. 4; W.S.G.A. House  
Council 2, 3; Collegian Reporter 1;  
Sioux 4; D. Phi K. 2, 3, 4.

"Number, please—"



LOIS WHITE

B. A.

Davenport

M. C. A. 1, 2; Y.W.C.A. 4; W.S.  
G.A. 2, 3, 4; Manuscript 4; Sioux  
4; Band 1, 2; Kappa Chi 1, 2;  
Agora 1, 2, 3, 4; D. Phi K. 2, 3, 4.

"Keep smilin' " \*



# PHOTO-PHOBICS

ORGINE MEENTS

B. A.

Sioux City

ERNST BAER

B. S.

Sioux City

LLOYD A. PETERSON

B. A.

Sioux City

GLADYCE LOBB

Sioux City

B. S.

LUCILLE PIPPETT HAKALA

B. S.

Sioux City

JOHN R. DICK

B. A.

Omaha, Nebraska

ELLEN WESTERGAARD

B. S.

Whiting

Kappa Pi Alpha 2, 3, 4, Soc. Ch.  
3, 4; Ishkoodah Sgt. Arms 1; Choir  
1, 2, 3, 4; Symphony 2, 3, 4;  
Soph. Class Pres.; Y.W.C.A. 3, 4;  
Board of Control 3; Student Coun-  
cil 3, 4, Pres. 4; W.A.A. 2, 3, 4,  
Pres. 4; W.S.G.A. Pres. 4; Social  
Life Committee 4; Cheer Leader 4;  
Collegian Reporter 3, 4; Sioux 3,  
4; Majorettes 4; Yale-Harvard 3,  
4; Agora 1, 2, 3, 4, Second Pres.  
4; M.F.T.C. 4; Inter-sorority Coun-  
cil 3, 4; Biology Club 2; Miss  
Morningside 4; WHO'S WHO.

"Life is so short, let's make it  
snappy!"

1 9 4 5



SOPHISTICATED

(?)

SENIORS

SIoux



SIoux



1 9 4 5





JEAN BLESSING  
Sioux City, Iowa  
*"Determination will always Win"*



CHARLENE GOETSCHIOUS  
Newell, Iowa  
*"She's 'Chuck' full of fun"*



BOYD HENRY  
Sioux City, Iowa  
*"Endowed with a lot of common sense"*



JOAN JOHNSON  
Sioux City, Iowa  
*"A charming Miss with shining hair"*

JUNIOR OFFICERS

- President - - - - - AUDREY HUGHES
- Vice-President - - - - - HELEN NORTHUP
- Secretary-Treasurer - - - - - LOIS EMME
- Student Council Representative - - - - - MARJ KASTEN



PRISCILLA CROW  
Sioux City  
*"A girl with real musical ability"*



RUTH HELD  
Hinton, Iowa  
*"She has a friendly word for every one"*



AUDREY HUGHES  
Primghar, Iowa  
*"She enjoys being everyone's friend"*



MARJORIE KASTEN  
Spring Valley, Minnesota  
*"Merry mischief shines in her eyes"*



PATRICIA KUNDERT  
Sioux City, Iowa  
*"Her opinions are cut on the bias"*



DOROTHY LEONARD  
Sioux City, Iowa  
*"Talks nice, acts nice, looks nice, and is nice"*







JOLLY  
(?)  
JUNIORS



HELEN NORTHRUP  
Sioux City  
*"If you feel like laughing,  
laugh"*

DORIS PETERSON  
Stanhope  
*"Always willing to  
co-operate"*

CHARLOTTE TAGG  
Sioux City  
*"A pleasing personality and a  
smile for all"*

TOM WIKSTROM  
Sioux City  
*"He can resist anything but  
temptation"*

FLORENCE WILKEN  
Schleswig  
*"The kind you like to know"*  
DARREL MCENTAFFER  
Sioux City, Iowa  
*"Well known and well liked"*

RUTH MESHBURGER  
Sioux City  
*"You don't have to be loud  
to be liked"*

PHYLLIS ORNER  
Sioux City  
*"Happy-go-lucky"*

MARGARET RALSTON  
Salix  
*"An all-around good sport in  
every sense of the word"*

MARY WOOD  
Sioux City  
*"Kind and sweet, dainty and  
neat"*

PHOTO-PHOBIcs

RUTH OLSON  
Sioux City  
*"Sincerity is her byword"*

COILA SEIBER  
Glenbeulah, Wisconsin  
*"Get acquainted with her,  
she'll surprise you"*

SHIRLEY TAPLEY  
Newell  
*"You can depend on her"*







Anderson, Deloris Estherville	Arends, Jean Little Rock	Arredondo, Emilio La Paz, Bolivia	Baker, Harriet Sergeant Bluff
Balkema, John Sioux City	Becker, Anton Sioux City	Conrad, Mary Jane Ponca, Nebraska	Cox, David Sioux City

Crowley, Constance Storm Lake	De Witt, Veneta Milford	Dilly, Constance Sioux City	Eisentrager, Elaine Alford
Evans, Marilyn Sioux City	Fagan, Leona Merrill	Forsling, Bethel Sioux City	Friis, Arnold Marathon



SOPHMORE OFFICERS:

President	- - - - -	EMILIO ARREDONDO
Vice-President	- - - - -	BETHEL FORSLING
Secretary-Treasurer	- - - - -	CONSTANCE DILLY
Student Council Representatives	- - - - -	KATHERINE ROADMAN







SIUX

PHOTO-PHOBICS

- BURGEL, HENRY  
Sioux City
- CARTER, LAURA  
Sioux City
- COOPER, VIRGINIA  
Sioux City
- FEYDER, GLORIA  
Sioux City
- KOBAYASHI, MARY  
Rivers, Arizona
- KRSKA, MELVIN  
Sioux City
- LEEPER, PHYLLIS  
Sioux City
- OSBEY, JEANNE  
Sioux City
- OSBEY, WINNIFRED  
Sioux City
- WALKER, EVELYN  
Sioux City
- WEAVER, DONALD  
Correctionville
- YOUNG, BARBARA  
Sioux City



- Saupe, Ruth  
Sheldon
- Schmidt, Barbara  
Battle Creek
- Schultz, Mary Lou  
Peterson
- Severson, Donna  
Soldier
- Sheeler, Dorothy  
Kingsley
- Shepard, Arlene  
Shepard, Charline  
Storm Lake
- Smith, Kathryn  
Sheldon
- Travis, Helen  
Onawa
- Voight, Raeburn  
Estherville
- Weyer, Eileen  
Blue Earth, Minn.

- Williams, Lela  
Milford
- Wilson, Patricia  
Sioux City
- Young, Doris  
Sioux City
- Zeman, Paul  
Bradgate



- Harding, Marvel  
Whiting
- Hansen, Carol  
Battle Creek
- Harms, Dorothy  
Sheldon
- Havighurst, Connie  
Fort Dodge
- Held, Darlene  
Hinton
- Held, Katherine  
Hinton
- Kayahara, Kaoru  
Honolulu, Hawaii
- Kingsbury, Lovice  
Ponca, Nebraska

- Lyle, Shirley  
Sioux City
- MacDougall, Marilyn  
Manilla
- McCoy, Lura Mae  
Rockwell City
- McDonald, Nancy  
Sioux City
- Minor, Harold  
Fort Dodge
- Pierson, Shirley  
Sioux City
- Pitstick, Margaret  
Humboldt
- Roadman, Katherine  
Sioux City



SIUX







FRESHMEN OFFICERS:

President	- - - - -	HAROLD MINOR
Vice-President	- - - - -	CONNIE HAVIGHURST
Secretary-Treasurer	- - - - -	LOIS MCCALLUM
Student Council Representative	- - - - -	WILLIAM ELDREDGE







Bales, Elbert Sioux City	Bane, Opal Farnamville	Barbero, Ramon P. Panama City, Panama	Berg, Emma Correctionville	Bornholdt, Dick Arnolds Park	Bruce, Eunice Cherokee
Burrow, Arlene Battle Creek	Butson, Lois Archer	Byers, David Sergeant Bluff	Christians, Marvella Little Rock	Clement, Ruth Algona	Coyle, Norma Orson

Crandall, Lela Chambers, Neb.	Crary, Bruce Sioux City	Cruse, Mary Lou Redfield	Curtis, Maxine Sioux City	Daniels, Russell Superior, Wyo.	Deirup, John Sergeant Bluff
De St. Paer, Betty Larabee	Eldredge, William Lake City	Feller, Vesta Spirit Lake	Flick, Arlys Gaza	Forsberg, Mary Sioux City	Gaffey, Glen Moville



Hackett, Irene Sioux City	Hall, Evelyn Everly	Hansen, Hope Moorhead	Harding, Helen Graettinger	Harms, Lavonne Archer	Hasselman, Ruth Rock Rapids
Held, Esther Hinton	Hempstead, Marion Sioux City	Hench, Mary Aurelia	Horn, Joyce Boyden	Hucke, Alvina Lawton	Ibs, Robert Sioux City

Innes, Josephine Sloan	Johnson, Lavonne Milford	Keehn, Betty Hawarden	Kingsbury, Charlotte Sioux City	Lang, Marcella Sioux City	Larson, Fern Marathon
Laude, Audrey Kingsley	Lehmberg, Janyce Soldier	Lynn, Irene Sioux Falls, S. D.	Madsen, Buela Fonda	Mattson, Amy Alta	McCallum, Lois Butt







Swenson, Mavis Marathon	Teller, Ronald Lincoln, Nebr.	Tronsrue, Joyce Sioux City	Turk, Wayne Sioux City	Walker, Helen Schaller	Walter, Eleanor Sheldon
Wilkerson, Gordon Sioux City	Williams, Mary Blenco	Wolle, Carolyn Sioux City	Woods, Eilene Onawa	Woods, Elaine Onawa	Wright, Barbara Sioux City

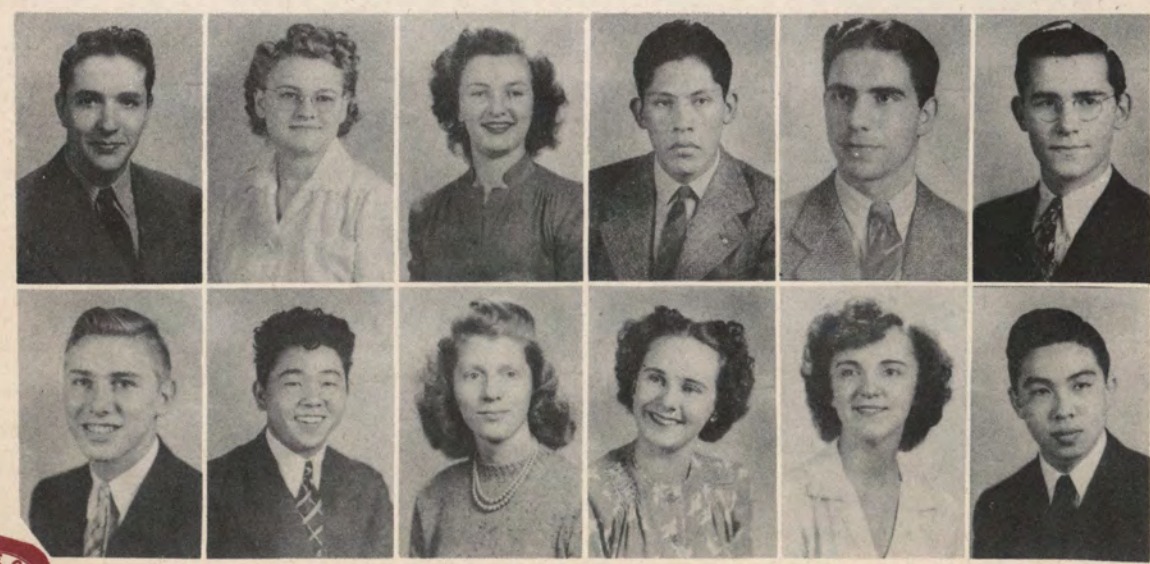
PHOTO-PHOBICS

- |                   |                    |
|-------------------|--------------------|
| Bush, Clyde       | Obrecht, Benjamin  |
| Castle, Mary      | Olson, Aleda       |
| Dahlberg, Lois    | Olson, Ruth Marie  |
| Danese, Denny     | Pappas, Bessie     |
| Dayton, Everett   | Pensis, Henri      |
| Forward, Theodore | Polly, Betty       |
| Frasch, Betty     | Treiber, Jean      |
| Fribourgh, James  | Trosper, Harriet   |
| Gillespie, Robert | Wise, Charley      |
| Gonzales, Dolores | Woodford, Audentia |
| Loepp, David      |                    |



McConnell, Dorothy Marcus	Nelson, Kathryn Sioux City	Nipher, Rolana Estherville	Oliver, Orlene Sioux City	Paulin, Donna Remsen	Pearey, Lona Pisgah
Peterson, Betty Sioux City	Pickering, Jean Sioux City	Place, John Milford	Velma, Redembaugh Omaha, Nebraska	Rorapaugh, Margaret Sioux City	Runions, Lawrence Lake Park

Runions, John Sioux City	Sadler, Evelyn Correctionville	Sargisson, Barbara Luton	Sarmiento, Hugo La Paz, Bolivia	Schossow, Lyle Fonda	Schroeder, Laverne Lone Rock
Schultz, Marvyn Lone Rock	Shibuya, Yoshindo Manzanar, Calif.	Shreve, Betty Sioux City	Snyder, Phyllis Storm Lake	Sodergren, Dorothy Sioux City	Suzuki, Tadao Rivers, Arizona







SIUX

# SECOND SEMESTER AND UNCLASSIFIED STUDENTS

NAME	CLASS	HOME ADDRESS
Baker, Roland - - - - -	Fr. - - - - -	Sioux City
Behling, Gladys - - - - -	Fr. - - - - -	Sioux City
Blair, James Birney - - - - -	Uncl. - - - - -	Spokane, Washington
Blue, Darlene - - - - -	Fr. - - - - -	Farnhamville
Bourrett, Helen - - - - -	Soph. - - - - -	Sioux City
Bremer, Gordon - - - - -	Uncl. - - - - -	Pontiac, Illinois
Davenport, Doris - - - - -	Fr. - - - - -	Sioux City
Dirr, Laurel Strobel - - - - -	Jr. - - - - -	Sioux City
Ehlers, Betty - - - - -	Fr. - - - - -	Sioux City
Everett, Eleanor - - - - -	Con. Fr. - - - - -	Sioux City
Gifford, James - - - - -	Jr. - - - - -	Sioux City
Gilbert, Ardis - - - - -	Uncl. - - - - -	Sioux City
Green, L. Pierce - - - - -	Fr. - - - - -	Cherokee, Iowa
Grueskin, Doris - - - - -	Sr. - - - - -	Sioux City
Gunderson, L. Vernell - - - - -	Fr. - - - - -	Sioux City
Henderson, Barbara - - - - -	Con. Fr. - - - - -	Sioux City
Kaji, Teruo - - - - -	Fr. - - - - -	Manzanar, California
Keizer, Lewis - - - - -	Fr. - - - - -	Alton
Lambert, Frank - - - - -	Fr. - - - - -	Chicago, Illinois
Lembcke, Mary Louise - - - - -	Fr. - - - - -	Sioux City
Marsh, Mrs. Emma - - - - -	Uncl. - - - - -	Sioux City
Mathwig, Leroy - - - - -	Con. Sr. - - - - -	Sioux City
McCorkindale, James - - - - -	Fr. - - - - -	Sioux City
Mihos, Charles - - - - -	Uncl. - - - - -	Sioux City
Moore, Dorothy - - - - -	Fr. - - - - -	Pipestone, Minnesota
Norris, Mary - - - - -	Con. Sr. - - - - -	Sergeant Bluff
O'Dell, Virginia - - - - -	Fr. - - - - -	So. Sioux City, Nabr.
Ono, Sam - - - - -	Fr. - - - - -	Manzanar, California
O'Shea, Shamos - - - - -	Uncl. - - - - -	New Freedom, Penn.
Patterson, William - - - - -	Uncl. - - - - -	St. Louis, Missouri
Poole, Donna - - - - -	Uncl. - - - - -	Sioux City
Quedensley, Joseph - - - - -	Uncl. - - - - -	Peoria, Illinois
Raskin, Carolyn - - - - -	Fr. - - - - -	Sioux City
Sander, William - - - - -	Con. Fr. - - - - -	Clinton, Iowa
Schenck, Erlene - - - - -	Uncl. - - - - -	Thor, Iowa
Shipton, Blake - - - - -	Jr. - - - - -	Sioux City
Stracker, Ruth - - - - -	Uncl. - - - - -	Brooklyn, New York
Swanson, Edward - - - - -	Soph. - - - - -	Sioux City
Thompson, Virginia - - - - -	Jr. - - - - -	Sioux City
Wansink, John - - - - -	Fr. - - - - -	Sioux City
Warnholtz, Marylou - - - - -	Fr. - - - - -	Sioux City
Wolle, William - - - - -	Fr. - - - - -	Sioux City
Wright, Richard - - - - -	Fr. - - - - -	Sioux City
Zierner, Rev. Robert - - - - -	Uncl. - - - - -	Sioux City
Zuparn, Marian - - - - -	Fr. - - - - -	Sioux City



FRESH (!!!)  
FRESHMEN

SIUX







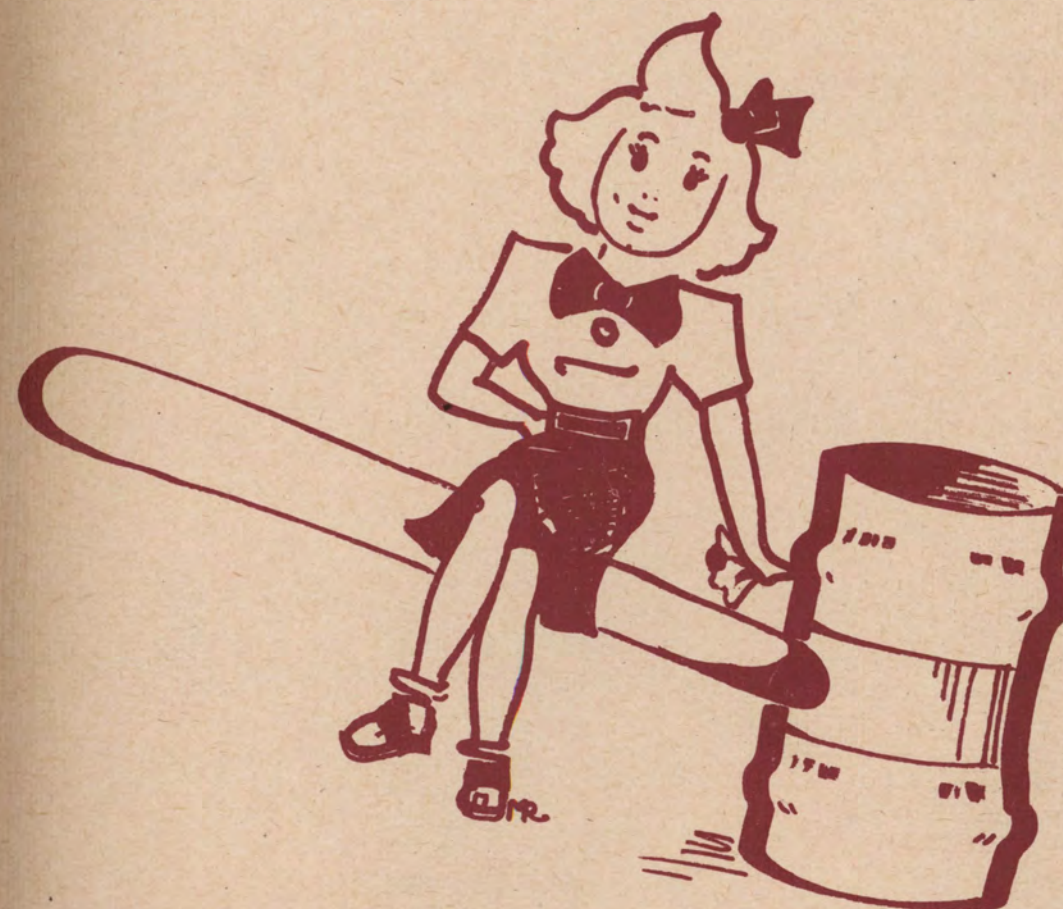
## DOWNTOWN DIVISION

The Downtown Division is an integral part of Morningside College. It enables employed people, who wish to learn while they earn, to attend late afternoon and evening classes. Quarters are conveniently located downtown for their accommodation. A wide variety of courses of college caliber are offered to appeal to adult students. An increasing number of people has responded to this opportunity provided by Morningside College.

Dr. Thomas E. Tweito of the History department directs the Downtown Division.



# Organizations





# AGORA CLUB



<i>President</i>	- - - - -	BETTY CAIRY
<i>First Vice-President</i>	- - - - -	EVELYN MADSEN
<i>Second Vice-President</i>	- - - - -	ELLEN WESTERGAARD
<i>Secretary</i>	- - - - -	AUDREY HUGHES
<i>Treasurer</i>	- - - - -	MARY JANE CONRAD
<i>Senior Representative</i>	- - - - -	EILEEN GUSE
<i>Junior Representative</i>	- - - - -	DELORES EBERT
<i>Sophomore Representative</i>	- - - - -	KATHERINE ROADMAN
<i>Freshman Representative</i>	- - - - -	BARBARA WRIGHT

Agora, the largest organization on the campus, is composed of every girl enrolled at Morningside. Agnes B. Ferguson organized the club in 1914. Its purpose is to promote a closer fellowship among the coeds.

The organization has numerous traditions which are carried out each year: the Campus Sisters' Tea, the Carnival Dance, the Agora edition of the Collegian Reporter, and the Mother-Daughter Banquet.

This year marks the second anniversary of the annual Leadership Dinner held this year at the Mayfair Hotel. Invitations were issued to all girls who held offices in campus organizations or represent the college in extra curricular activities. Miss Mabel Hoyt was the guest speaker.

Agora operates through a representative board, the members of which are elected by popular vote of all college girls.



# STUDENT COUNCIL



President (first semester) -	EVELYN MADSEN
President (second semester) -	ELLEN WESTERGAARD
Vice-President -	BEVERLY REHNBLOM
Secretary-Treasurer -	LOIS EMME

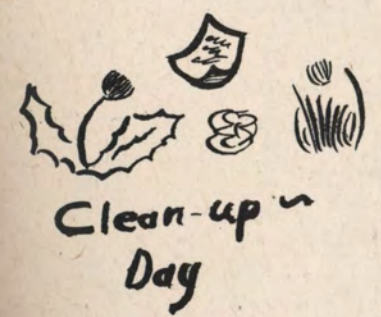
The Student Council is composed of four officers chosen by the student body, plus the presidents and council representatives of each class, W. S. G. A., the Conservatory and other campus organizations.

This organization directs and promotes many college functions on the Campus, such as Homecoming Activities, Clean-Up Day, Walk-Out Day, college dances, and Freshman-Sophomore Day. This year, with the leaving of the Cadets, the social program was a little more difficult to plan but with the wonderful school spirit shown by the students, the social life has been extremely rich and varied.

One of the new features this year was the "Social Hour" held in the Barn after every basketball game. Another innovation was the "All-Class Party", in which each class had different responsibilities to make it a success.

All in all, it has been a successful school year, and we have reasons to be proud of our Student Council.

**MORNINGSIDE**  
presents its  
annual  
**Sadie Hawkins**  
**Day**  
**DANCE**  
Friday - April 20 - 1945 -  
Stag .50 8:00 p.m.  
Drag .75



THE BEST SELLER OF OUR TIME

# ONE WORLD

**Wendell L. Willkie**

BOOK

THIS IS A War Book Panel Imperative  
Entered by the COUNCIL IN WARTIME

SIOUX

SIOUX





## SIoux STAFF

Editor - - - - -	BONITA HAHN
Assistant Editor - - - - -	MARGARET RALSTON
Business Manager - - - - -	GUS LEASE
Faculty Advisor - - - - -	DR. T. E. TWEITO
Literary Editor - - - - -	MARY MARGARET WEATHERBY
Literary Assistant - - - - -	MARY CASTLE
Freshman Editor - - - - -	BARBARA SARGISSON
Sophomore Editor - - - - -	DORIS YOUNG
Junior Editors - - - - -	HELEN NORTHUP JOAN JOHNSON
Senior Editor - - - - -	ELLEN WESTERGAARD
Class Editor - - - - -	HARRIET KEITH
Music Editor - - - - -	HENRI PENSIS, JR.
Dramatics Editor - - - - -	DAVID COX
Womens Sports Editors - - - - -	LOIS HELD LOIS EMME
Mens Sports Editor - - - - -	BILL ELDRIDGE
Departmental Editors - - - - -	MARGARET PITSTICK JEAN RAE PICKERING CAROL HANSEN ELAINE EISENTRAGER
Calendar - - - - -	BETTY PETERSON
Feature Editor - - - - -	HAROLD MINOR
Photography Editor - - - - -	RALPH CLAYTON
Photography Assistants - - - - -	TOM WIKSTROM JOHN GRIFFIN
Snap Shot Editors - - - - -	JOHN BALKEMA KATHRINE NELSON
Artists - - - - -	MARGARET RALSTON LOIS WHITE
Compilers - - - - -	RAEBURN VOIGHT ORLENE OLIVER BETTY SHREVE MILDRED JENSEN ELBERT P. BALES



THANKS TO ALL THE MEMBERS  
OF THE SIOUX STAFF, 1945, FOR  
THEIR COOPERATION ON "OUR" BOOK

"Bonnie"





# COLLEGIAN REPORTER

- Editor - - - - - MARCILLE BOHN
- Business Mgr. - - - - - BRUCE CRARY
- Proofreaders - - - - - MARY WOOD, KATHERINE ROADMAN
- Sports Editor - - - - - BOB GILLESPIE
- Make-Up Editor - - - - - RAEBURN VOIGT
- Circulation Editor - - - - - MARILYN EVANS
- Feature Writers - - - - - BEVERLY REHNBLUM, LEONE SARGEANT, EILEEN GUSE, LOVICE KINGSBURY, CHARLENE GOETCHIUS, DORIS PETERSON
- Reporters - - - - - JEAN RAE PICKERING, ELLEN WESTERGAARD, MARY CASTLE, RUSSELL DANIELS, BETTY SHEVE, MILDRED JENSEN, INEZ HARRIS, PHYLLIS LEEPER, PAT WILSON, DORIS YOUNG, EVELYN MADSEN, MARGARET RALSTON



The Collegian Reporter, published bi-weekly during the school year, except for vacations, boasted a staff of twenty-five very active, cooperative members. Meetings were held each Wednesday at 1:00. The Collegian staff members, other than publishing the paper, also were the instigators and sponsors of the College Fashion Show, and as a project, re-decorated the College Reporter room.







Y. M. C. A.



Y. W. C. A.



Y. W. — Y. M. OFFICERS

President	- - - -	EMILIO ARREDONDO	RUTH SAUPE
Vice President	- - - -	HUGO SARMIENTO	LOVICE KINGSBURY
Secretary	- - - -	DEAN GRABER	MARY JANE CONRAD
Treasurer	- - - -	PAUL ZEMAN	DOROTHY SHEELER
Sponsor	- - - -	BRUCE CRARY	MISS STELLA YATES



SOCIAL CALENDAR

- September 19—"Y" New Student Mixer
- September 20-21—Ikota Area "Y" Conference, Sioux Falls
- October 27—Hallowe'en Party Masquerade, "Y"
- October 29—"Y" Retreat
- November 4—YMCA Football Party
- November 11—"Y" Victory Dance
- November 21—"Y" Thanksgiving Chapel
- December 6—"Y" Meager Meal, with Dr. Tang
- December 7—"Y" W. S. S. F. Chapel
- December 11-15—W. S. S. F. Week, Goal \$253.00—reached \$303.33!
- December 18—YWCA Christmas Tea
- December 19—"Y" Christmas Chapel
- February 10—"Y" New Student Mixer
- February 12-13—YWCA Heart Sister Week and Party
- March 27—"Y" Easter Chapel
- May 5-6—"Y" Retreat







# WOMEN'S SELF-GOVERNING ASSOCIATION

President - - - - - ELLEN WESTERGAARD  
 Vice-President - - - - - MARJORIE KASTEN  
 Secretary - - - - - MARILYN MACDOUGALL  
 Treasurer - - - - - DOROTHY SHEELER

Floor Representative First Semester

Earlene Schenck  
 Phyllis Vande Brake  
 Connie Havighurst  
 Margaret Pitstick  
 Carrie Bonneson

Freshman Advisor - - - - - GLORIA FEYDER  
 Faculty Advisor - - - - - DEAN TOLF

The Women's Self Governing Association formulates and administers the rules and regulations of the girls on residence on the campus. The policies and activities concerning the girls in residence are in the hands of an Executive Board, composed of the officers of the association, the Floor Representatives, the House Director, and the Dean of Women, which meets each week to discuss and formulate plans with the welfare of the girls in mind at all times.

This year the Executive Board has been especially busy reinstating the traditions of the Dormitory which were partially lost when the Cadet Training Detachment invaded the Residence Halls. Together with such traditions as the "Dorm Formal", "Hanging of the Holly", "Trimming of the Tree", "The Hallowe'en Party", Birthday Parties, and College Dances, new traditions have come into being. This year one of the loveliest events of Christmastime was the Christmas Formal Dinner at which Dr. and Mrs. Roadman were guests. The Dormitory has become once again the center of much social life and activity on our campus. It is a place of real hospitality and genuine friendliness to all who are its guests during the course of a year.



# SIGMA TAU DELTA

The Gamma Beta Chapter of Sigma Tau Delta, national honoray English fraternity, was organized at Morningside College in 1926. Its purpose is to advance the study of literature, encourage worthwhile reading, and promote the mastery of written expression. Members must be English majors, and they are elected on the basis of scholastic standing and proficiency in English. Meetings are held monthly in the homes of the members. This year the programs have been devoted to the study of current literature (discussion and evaluation), and to more ability in recognizing and identifying quotations from literature of the past.

President - - - - - JEANETTE KAHOUN  
 Vice-President - - - - - ROSEMARY HUXTABLE  
 Secretary-Treasurer - - - - - INEZ HARRIS  
 Faculty Adviser - - - - - MISS MIRAH MILLS



# COSMOPOLITAN CLUB

Cosmopolitan Club was organized in 1926 with the purpose of furthering better relationships between races. The program consists of a variety of dinners denoting different races, with programs of their various customs, songs, and folk-lore.



President - - - - - EVELYN WALKER  
 Vice-President - - - - - MARY KOBAYASHI  
 Secretary-Treasurer - - - - - LAURA CARTER  
 Sponsors - - - - - MR. AND MRS. CLINTON BURRIS







# KAPPA CHI

Kappa Chi is the National Christian Service Fraternity for men and women who plan to enter some type of religious service through the Church. The national headquarters are here at Morningside and the local Delta Chapter is one of seven national organizations.

Kappa Chi uses the two initial letters of the Greek words, "Karukos Christos," which mean "Preachers of Christ". The key word is "Therapeia", the Greek word for service. The symbols—Fellowship, the Trinity, and Service, are embodied in the Cross of Christ.



President	- - -	ANTON BECKER
Vice-President	- - -	BERNARD TRAVAILLE
Secretary	- - -	COILA SIEBER
National Secretary	- - -	DOROTHY WELLS
Treasurer	- - -	LYLE SCHOSSOW
Advisor	- - -	DR. W. J. SCARBOROUGH
Marshall	- - -	PAUL ZEMAN

OTHER MEMBERS: David Cox, Everett Dayton  
Ruth Saupe, Eunice Bruce,

# PHI SIGMA IOTA

Phi Sigma Iota, national honorary romance language fraternity, was primarily organized for students of sophomore standing or above in the romance languages. The purpose is to stimulate research and to promote interest and good will among the romance language speaking nations.



OFFICERS		
President	- - -	MARY MARGARET WEATHERBY
Vice-President	- - -	JOAN JOHNSON
Secretary-Treasurer	- - -	H. F. KANTHLENER

Members: Mary Margaret Weatherby, Joan Johnson, Darrel McEntaffer, Emilio Arredondo, Mary Jane Conrad, Lovice Kingsbury, Carol Patterson.

# PRE-ENGINEERS

## OFFICERS

	First Semester	Second Semester
President	- - - RALPH CLAYTON	DON WEAVER
Vice-Pres., Historian	DON WEAVER	MELVIN KRKA
Secretary	- - - RONALD TELLER	RALPH CLAYTON
Treasurer	- - - DAVID LOEPP	RALPH CLAYTON
Student Council Representative	- RONALD TELLER	CHARLES WISE



The Pre-Engineers Club is a group of young men organized to further interest in the exact sciences, and to provide opportunity for those members interested in this department to have social gatherings.

The ultimate aims of the club is to provide a greater background in their vocational field. The club does this in its weekly meeting, where part of the program is dedicated to engineering reports and lectures by members and outside speakers.

# GRACE COLLEGIANS

Grace Collegians is the campus organization for Methodist students interested in rounding out their Sunday program. Activities included discussion meetings each Sunday, attendance at Dr. Scarborough's lecture class on the Prophets, helping to provide Christmas gifts for Japanese-American children, sponsorship of Methodist Student Day, December 31, 1944, and promotion of the Crusade for Christ.

## OFFICERS

	First semester	Second Semester
President	- - - HAROLD MINOR	JOYCE HORN
Vice-President	- - - ESTHER HELD	
Secretary-Treasurer	- - - LOIS MCCALLUM	
Social Chairman	- - - LELA CRANDALL	





MORNINGSIDE FUTURE TEACHERS' CLUB



President



Vice-President



Secretary



Treasurer

The Morningside Future Teachers' Club is an active organization on the campus including 52 members. The purpose of the club, according to the constitution is: to familiarize the members of the club with the problems, responsibilities, and opportunities in the teaching profession, to better equip the members for their work in education, to cooperate with state and national education associations, and to help raise the standards, influence and prestige of the education profession.

Regular meetings are held monthly and various educational projects are sponsored including a series of weekly radio broadcasts dealing with Iowa School Legislation.

The club is affiliated with Iowa State Teachers' Association and National Education Associations. Membership in the Future Teachers of America is available to members of the Morningside Future Teachers' Club and twenty-one members have accepted this privilege.



ISHKOODAH

ISHKOODAH OFFICERS

	First Semester	Second Semester
President	CONNIE HAVIGHURST	BARBARA WRIGHT
Vice-President	MARGARET PITSTICK	ESTHER HELD
Secretary	LAVONNE JOHNSON	CAROLYN WOLLE
Treasurer	MARGARET RORAPPAUGH	DOROTHY MCCONNELL

At one of the first meetings of Ishkoodah, the new officers of first semester 1944-45 year were installed.

With the installation of the new officers by the retiring Sophomore group, Ishkoodah began a new year of activities backed by a large and very enthusiastic group of Freshman girls. This club, to which all Freshman women in college belong is the organization that gives the first year students the sense of unity and belonging to the campus through the planning and administering of its own program of activities.

Plans for the year have included regular social meetings held every second week in the various club rooms on the campus, special events such as; the Christmas party held about the fireside in the dormitory, Christmas caroling and a gift exchange party.







FROSH-SOPH DAY



INTER-SORORITY COUNCIL

First President - - - - - MISS STELLA YATES, Alpha Sigma Advisor  
 Second President - - - - - MISS RUTH BUTTS, Kappa Pi Alpha Advisor  
 Third President - - - - - MISS MIRAH MILLS, Kappa Zeta Chi Advisor  
 Secretary-Treasurer - - - - - MARY WOOD, Kappa Zeta Chi Representative  
 Advisor - - - - - MISS ALVA TOLF

MEMBERSHIP

First Semester

ALPHA SIGMA  
 Harriet Keith  
 Charlotte Tagg  
 Eileen Guse

KAPPA PI ALPHA

Melva Tiemens  
 Audrey Hughes  
 Ellen Westergaard

KAPPA ZETA CHI

Betty Cairy  
 Lois Held  
 Mary Wood

Second Semester

ALPHA SIGMA  
 Harriet Keith  
 Charlotte Tagg  
 Eileen Guse

KAPPA PI ALPHA

Lorraine Haviland  
 (Alternate, Phyllis Vande Brake)  
 Audrey Hughes  
 Laurel Dirr

KAPPA ZETA CHI

Evelyn Madsen  
 Betty Cairy  
 Mary Wood

Members of the Inter-sorority Council consist of the president and two appointed by her to represent each sorority. A secretary is chosen to serve for the year, each sorority having one of its regular representatives act in this position every third year. The president is chosen from among the advisors of the groups, each advisor serving for one-third of the year, according to a rotation plan. Meetings are held once a month at the dormitory for luncheon. The purpose of the council is to make decisions when cooperative measures are necessary, and to make all regulations concerning sorority relations. Particularly outstanding accomplishments of this year are the inter-sorority party held at the Y.W.C.A., the sending of current magazines to the patients at the Army Air Base hospital, and the planning and execution of the spring rushing and pledging season.







The Useful and  
the Pleasing

SI  
OU  
X

# ALPHA SIGMA SORORITY

## OFFICERS

	First Semester	Second Semester
<i>President</i> - - - - -	HARRIET KEITH	HARRIET KEITH
<i>Vice-President</i> - - - - -	ARLENE DORNBUSCH	EILEEN GUSE
<i>Recording Secretary</i> - - - - -	EILEEN GUSE	PHYLLIS ORNER
<i>Corresponding Secretary</i> - - - - -	PHYLLIS ORNER	RUTH SAUPE
<i>Treasurer</i> - - - - -	CHARLOTTE TAGG	CHARLOTTE TAGG
<i>Critic</i> - - - - -	CHARLINE SHEPARD	MARY LOU SCHULTZ
<i>Chaplain</i> - - - - -	RUTH SAUPE	DOROTHY HARMS
<i>Pianist</i> - - - - -	AMY MATTSON	CHARLINE SHEPARD
<i>Usher</i> - - - - -	ARLINE SHEPARD	DOROTHY SHEELER
<i>Reporter</i> - - - - -	MARY LOU CHAMBERLIN	ARLINE SHEPARD
<i>Historian</i> - - - - -	DOROTHY SHEELER	IRENE HINRICHS

## MEMBERS

Harriet Keith	Phyllis Orner	Amy Mattson
Eilene Guse	Bonita Hahn	Shirley Lyle
Arlene Dornbusch	Ruth Saupe	Raeburn Voigt
Mary Lou Chamberlin	Dorothy Sheeler	Mary Lou Schultz
Irene Hinrichs	Arlene Shepard	Dorothy Harms
Charlotte Tagg	Charline Shepard	

## FACULTY ADVISOR

Stella Yates

The Alpha Sigma Sorority was organized in 1891 as the Athenaeum Literary Society. The organization has changed to Alpha Sigma, a social sorority.

The new hall in the dormitory has been the center of interest this year. Getting settled, covering furniture, and scraping varnish to refinish three chairs were lots of fun. Other pleasant memories include the "Alice Blue Gown" number at Homecoming, formal and informal initiation, popcorn parties, chapel program, spreads, the Christmas party, open houses, and several "five pound parties".

The members this year have lived up to the Alpha Sigma ideal of "Utile Dulci," the useful and the pleasant.







Faithfully, Bravely,  
Happily

SIUX

## KAPPA PI ALPHA

### OFFICERS

	First Semester	Second Semester
<i>President</i> - - - - -	MELVA TIEMANS	LORRAINE HAVILAND
<i>Vict-President</i> - - - - -	DORIS PETERSON	PHYLLIS VANDE BRAKE
<i>Recording Secretary</i> - - -	BETTY BOLES	MELVA TIEMANS
<i>Corresponding Secretary</i> -	MARILYN MACDOUGALL	LAUREL DIRR
<i>Treasurer</i> - - - - -	AUDREY HUGHES	NANCY McDONALD
<i>Sgt. at Arms</i> - - - - -	GLORIA FEYDER	BARBARA SCHMIDT
<i>Chaplain</i> - - - - -	PAT WILSON	ELLEN WESTERGAARD
<i>Hall Chairman</i> - - - - -	PHYLLIS VANDE BRAKE	AUDREY HUGHES
<i>Critic</i> - - - - -	AUDREY HUGHES	MARILYN MACDOUGALL
<i>Reporter</i> - - - - -	JEAN ARENDS	CONNIE DILLY
<i>Librarian</i> - - - - -	PRISCILLA CROW	PAT WILSON

Amidst the unforgettable scent of yellow roses infused with tradition, the Pi's conclude another year—Friday teas and meetings . . . gracious prexies, Melv and "Shug" . . . Laurel keeping the old ball rolling . . . our Ouiji Board rendering that last ray of hope to some beavers no longer eager . . . Pug's rendition of "Smoke Gets in Your Eyes," made more smoky with some worn-out harmony by Barb, Pete, and Westy . . . our blonde ecstatician, Pat, enticed with the latest "Back Home for Keeps" picture, and "Sweet and Lovely" Audrey usually concentrating on Goody except for a few rare occasions, when she continues concentrating on Goody . . . Dilly having a "dilly" of a time preparing tea, but always turning up with something extra-special . . . gabfests on life and love . . . Homecoming, the song contest, and Westy, our queen . . . that traditional eve when we find First Floor East fumigated by strange odors, and Jeannie and Marv' drooling to the score of ten pancakes down and five to go . . . the roller skating party proves embarrassing to Betty, Phyl and Nance whose unmomentous bodies lag considerably behind the four wheels on which they rest (Oh, the injustice of that Law of Gravity!) . . . Mac Dougall actually shows domestic possibilities as the chambermaid in the Pi chapel presentation while "Apeface" Feyder demonstrates profound proof of the theory that men has descended from the ape . . . formal openhouse, rushing—pledging . . . fun, friendship, fidelity—tradition, intermingled with candlelight and yellow roses . . . Yes, "We love you truly, dear old Pi."







To Be Rather Than  
to Seem

SIUX

# KAPPA ZETA CHI

## OFFICERS

	First Semester	Second Semester
President - - - - -	BETTY CAIRY	EVELYN MADSEN
Vice-President - - - - -	LOIS HELD	LOIS EMME
Recording Secretary - - - - -	EVELYN MADSEN	BEVERLY REHNBLOM
Corresponding Secretary - - - - -	HELEN NORTHRUP	MARCILLE BOHN
Treasurer - - - - -	LOIS EMME	LOIS HELD
First Critic - - - - -	LEONE SERGEANT	BETTY CAIRY
Second Critic - - - - -	MARCILLE BOHN	JEANETTE KAHOUN
Soc. Chairman - - - - -	JEANETTE KAHOUN	MARY WOOD
First Director - - - - -	CHARLENE GOETSCHUS	HELEN NORTHRUP
Second Director - - - - -	BEVERLY REHNBLOM	WINNIFRED OSBEY
Chaplain - - - - -	JOAN JOHNSON	MARGARET RALSTON
Librarian - - - - -	MARY WOOD	MARY JANE CONRAD
Reporter - - - - -	MARGARET RALSTON	KATE ROADMAN
First Usher - - - - -	RUTH HELD	JEANNE OSBEY
Second Usher - - - - -		JOAN JOHNSON

## MEMBERS

Harriet Baker	Lois Held	Winifred Osbey
Marcille Bohn	Ruth Held	Margaret Ralston
Betty Cairy	Joan Johnson	Kathryn Roadman
Mary Jane Conrad	Jeanette Kahoun	Beverly Rehnblom
Lois Emme	Marjorie Kasten	Leone Sergeant
Marilyn Evans	Lovice Kingsbury	Donna Severson
Bethel Forsling	Phyllis Leeper	Lyla Hansen Springer
Charlene Goetschius	Evelyn Madsen	Barbara Young
Katie Held	Helen Northrup	Mary Wood
Darlene Held	Jeanne Osbey	

Honorary Members: Mts. Ira J. Gwnn, Mts. M. E. Graber

Advisor: Miss Mirah Mills

Motto— Ese Quam Videri—To be rather than to seem.

Colors—Red and Black

The "Zets" in their red sweaters and black shirts, The Up-River Trip, Hall Parties, Slumber? Parties, Open House, Friday afternoons meaning much to each sister Zet, Five Pound parties with their congratulations and fun, all are but a portion of the lively loyal spirit of the Kappa Zeta Chi Sorority.



SIUX





IN MEMORY OF THE MEN'S FRATERNITIES.  
MAY THEY SOON JOIN ACTIVELY IN OUR CAMPUS LIFE.



*We Retrace No  
Footsteps*



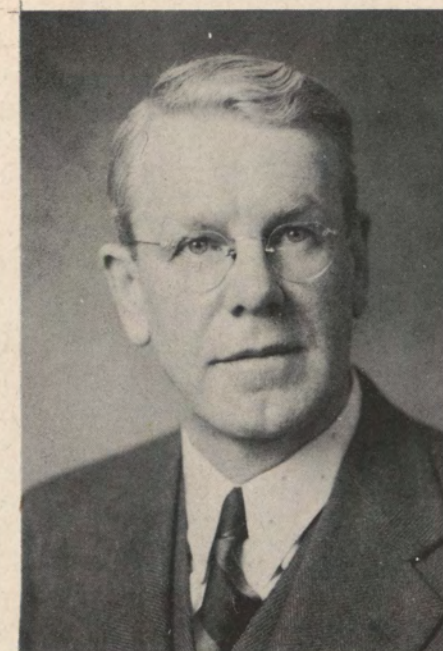
*Smoothness in Manner,  
Strength in All Things.*



# Music







PROFESSOR MAC COLLIN

## Head of the Conservatory of Music

Professor Mac Collin is known to us, as the man with the many jobs. Besides being head of the Conservatory, he is voice teacher and director of the Morningside College Choir. Wherever one sees him, one may be sure to see him smiling. To Prof. Mac-Collin goes the honor of having built up a music school, during the past few years, which is known throughout the Middle West.



# MORNINGSIDE COLLEGE CHOIR

The choir this year, despite a lack in number of male voices, lived up to expectations. It is something which stamps Tuesday Chapel with that religious solemnity. The main event of the choir this school year, was the annual presentation of the "Messiah" which was successful under the leadership of Professor MacCollin. The choir also participated in the presentation of "Elijah".



## MEMBERS OF THE CHOIR

Anderson, Delores  
Bane, Opal  
Chamberlin, Mary Lou  
Crase, Mary Lou  
Crow, Pricilla  
de St. Paer, Betty  
Flick, Arlys  
Guse, Eileen  
Hall, Evelyn  
Harding, Helen  
Keehn, Betty  
Laude, Audrey  
McCallum, Lois  
Nipher, Rolana  
Oliver, Orlene  
Pearey, Lona  
Emme, Lois  
Frasch, Betty  
Hahn, Bonita  
Hansen, Hope  
Horn, Joyce  
Keith, Harriet

Lehmberg, Janyce  
Paulin, Donna  
Roadman, Katherine  
Ralston, Margaret  
Schmidt, Barbara  
Severson, Donna  
Tapley, Shirley  
Westergaard, Ellen  
Everett, Eleanor  
Held, Ruth  
Clement, Ruth Ann  
Wolle, Carolyn  
Woods, Eileen  
Woods, Elaine  
Bates, Elbert  
Dayton, Everett  
Friis, Arnold  
Lekas, Ted  
Lease, Gus  
Loepp, David  
Wickstrom, Tom  
Minor, Harold

Dirr, Laurel  
Blue, Darlene  
Hendersen, Barbara  
Held, Esther  
Redenbough, Velma  
Rorapough, Margaret  
Shepard, Arline  
Shepard, Charline  
Smith, Katherine  
Snyder, Phyllis  
Swenson, Mavis  
Tronsrue, Joyce  
Walker, Evelyn  
Wilken, Florence  
Weyer, Eileen  
Crandall, Lela  
Crowley, Constance  
Dornbusch, Arlene  
Haviland, Lorraine  
Sanders, William  
Byers, David  
Becker, Anton



CHOIR

1 9 4 5



SIUX



SIUX



1 9 4 5



## MORNINGSIDE COLLEGE BAND

The band this year, under the "peppy" leadership of Rocco Pesile, certainly claimed for itself one of the highest places among the campus organizations. In spite of a small amount of players it was a well balanced band and sounded as well as any band in Sioux City, if not better. The band's Thursday Chapels were always something to be anticipated. All the praise goes to Mr. Pesile and the fine cooperation which the band members gave him, which made the band such a hit.



### MEMBERS OF THE BAND ARE

#### *Clarinets*

Mary Jane Conrad  
David Byers  
Betty Keehn  
Ted Lekas  
Eileen Weyer  
Lela Crandall  
Dorothy Sheeler

#### *Flutes*

Barbara Schmidt  
Janyce Lehmberg

#### *Sax*

Yoshindo Shibuya

#### *Basses*

Arnold Friis  
Evelyn Walker

#### *Cornets*

Bonita Hahn  
Eilene Woods  
Elaine Woods  
Evelyn Hall

#### *Horns*

Lois McCallum  
Florence Wilken  
Joyce Horn

#### *Drums*

Opal Bane  
Orlene Oliver  
Irene Lynn

#### *Trombone*

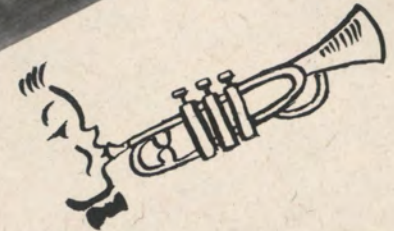
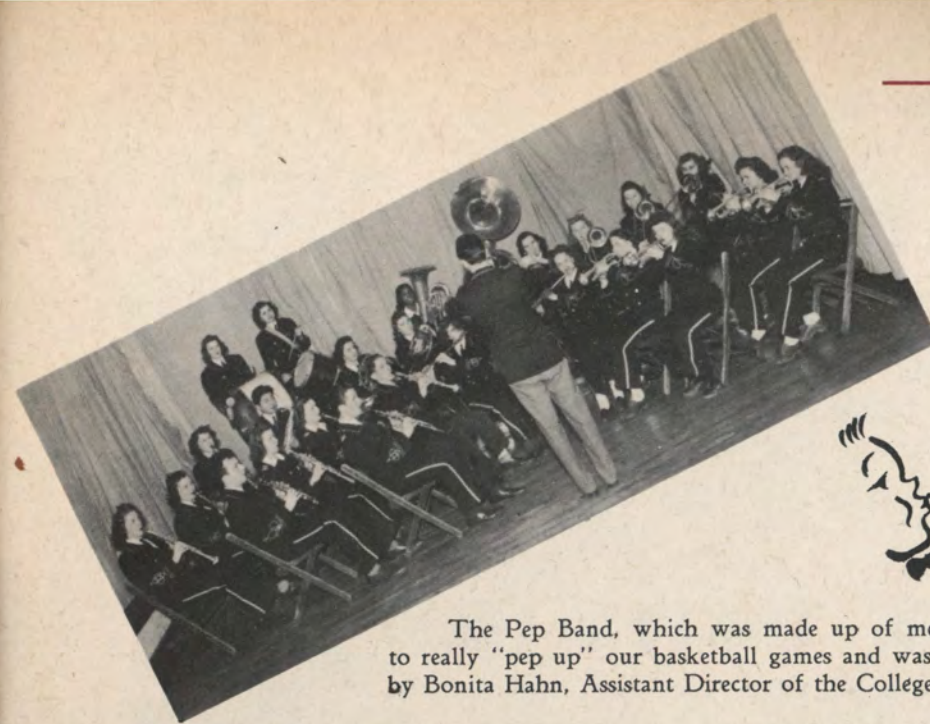
Audrey Laude  
Harriet Keith  
Shirley Pierson

1 9 4 5



SIoux

### PEP BAND



The Pep Band, which was made up of members of the regular band, did a lot to really "pep up" our basketball games and was appreciated by all of us. It was led by Bonita Hahn, Assistant Director of the College Band.



SIoux



1 9 4 5





# SIUX CITY SYMPHONY

The Sioux City Symphony Orchestra this season came through in an excellent way, despite great barriers. Most of the success is undoubtedly due to the inspiring leadership of Mr. Pensis, its conductor. The last concert of the season, with Blanche Thebom as guest artist, will remain in our memories for a long time to come as one of the most popular concerts given for quite some time, and which has made it the pride of every musically-minded Siu Cityan.



## COLLEGE STUDENTS IN THE SYMPHONY

*Violins*  
 Rocco Pesile  
 Shirley Pierson  
 Enid Neal  
 LeRoy Mathwig  
 Thomas Wickstrom  
 Constance Crowley  
 Josephine Innes  
 Doris Davenport  
 Eileen Weyer

*Viola*  
 Lorraine Haviland

*French Horns*  
 Florence Wilken  
 Lois McCallum  
 Phyllis Orner  
 Harold Minor

*Cello*  
 Charlotte Tagg

*Bass*  
 Ellen Westergaard

*Trumpet*  
 Bonita Hahn

*Trombone*  
 Audrey Laude  
*Flutes*  
 Mary Lou Chamberlin  
 Lovice Kingsbury  
 Eunice Bruce

*Oboe*  
 Henri Pensis, Jr.

*Clarinet*  
 Mary Jane Conrad

*Percussion*  
 Orlene Oliver

## SYMPHONY







### DANCE BAND

The Dance Band, "Swing Shift", was the main feature in the Morningside talent revue show. Its debut was a succesful one, and we hope to see it established as one of the permanent organizations on our campus. Its director was Gus Lease, one of our better known students, whose untiring efforts helped the band to its success.

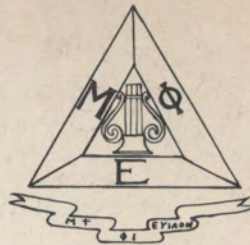
### PIANO TRIO

The Piano Trio is another organization composed of Morningside students. It performed during intermission of the class play, and on many other occasions. It is kept alive by the zeal of its members who do it mainly for their own pleasure. The Trio is composed of Priscilla Crow, Piano; Shirley Pierson, Violin; Charlotte Tagg, Cello.



### BOYS' QUARTET

The Boys' Quartet, composed of Dave Byers, Tom Wikstrom, Gus Lease and Harold Minor, has not only made a hit at our college but has made several outside appearances for which it has gained much recognition.



## MU PHI EPSILON

Mu Phi Epsilon, National Music Sorority, is represented on Morningside College campus by the Phi Zeta Chapter. Membership elections are based on scholastic standing and outstanding musicianship. Officers of Phi Zeta for this year are:

### OFFICERS

President	- - - - -	ENID NEAL
Vice President	- - - - -	FLORENCE WILKEN
Recording Secretary	- - - - -	BONITA HAHN
Treasurer	- - - - -	ARLENE DORNBUSCH
Corresponding Secretary	- - - - -	SHIRLEY PIERSON
Alumni Secretary	- - - - -	CHARLOTTE TAGG
Historian	- - - - -	DOROTHY LEONARD
Chaplain	- - - - -	MISS LOIS GRAMMER
Warden	- - - - -	HARRIET KEITH
Chorister	- - - - -	SHIRLEY TAPLEY
		MISS FAITH WOODFORD





[illegible]

## A red-ink line drawing of a woman with a surprised expression, her mouth open in an 'O' shape. She has short, wavy hair and is wearing a ruffled collar and a short, pleated skirt. She holds a small rectangular object labeled 'SCRIPT' in her right hand. The drawing is signed 'ME' at the bottom right. The background is a light, textured surface.





MISS BUTTS

The department of Speech this year was fortunate to have the services of Miss Ruth Butts, a graduate of Northwestern University and Indiana State Teachers College. Her work with the Winthrop Players of Winthrop, Maine, and the Chapel Playhouse Players of Guilford, Connecticut, have made her an experienced actress. Miss Butts also graduated from Alviene School of Dramatic Art in New York City.

Miss Butts is a member of Kappa Delta Pi and Zeta Eta and had experience before coming to Morningside at Indiana State Teachers College and at St. Mary of the Woods College. Her charming personality has made her class a joy and a grand experience for all her students.





## JUNIOR MISS



### CAST

[illegible]

Morningside's dramatic season was opened this year with the presentation of the hilarious three-act comedy, "Junior Miss". The play was written by Jerome Chodorov and Joseph Fields and was first produced by Moss Hart in 1941.

"Junior Miss" is a superior minded teen-ager who believes that there is only one place to be and that is New York. Her younger sister manages to keep their parents in trouble of one sort or other to the very end when all turns out well.

The play was presented to an appreciative audience December 1.

"PRIDE AND PREJUDICE"

Pride and Prejudice is a three-act comedy adapted from Jane Austen's novel and takes place in England in the 1790's, the days of hoop skirts and great formality in manners. In that setting is the Bennet Family, Mr. and Mrs. and the five daughters.

Mrs. Bennet's chief aim in life is to find good matches for her five daughters, and pursues this aim unceasingly. Mrs. Bennet has little trouble with Jane, the eldest. But

as her rather cynical husband looks on amused, she carefully considers every eligible bachelor for the remaining four—Elizabeth, musically minded Mary, Kitty, and the flirtatious Lydia.

The wealthy Fitzwilliams Darcy appears on the scene and is attracted by Elizabeth. But Darcy's pride and Elizabeth's prejudice against him, form a great barrier between them. The barrier, happily, is finally overcome.

The cast was:

[illegible]

## DEPARTMENTAL DOINGS

## BEVERLY'S SKIT

An interesting Christmas skit was written and produced by Beverly Rehnblom for the people of Grace Methodist Church during the Christmas Holidays. The cast was:

[illegible]

The skit takes place in Santa's workshop at the North Pole about the first of December. Santa, aware that Christmas is approaching, decides to hold an inspection of his dolls before he starts south. So each doll appears in turn to demonstrate its talents.



At various times through the year the Dramatics Department has been called upon to present programs for the entertainment of clubs, service men's groups and others. The oral interpretation class has provided several of these programs.

The work done by the radio class in presenting broadcasts on station KTRI was one of the year's outstanding projects.

Programs were produced by Dr. Kirkpatrick, Mr. Burris, Professor Reistrup, Dr. Hawthorne, Mrs. Grafton, and Mrs. Patch, all working with students. All in all this has been a productive year for Morningside's speech department.







SOMETHING NEW  
STAGE REVUE



"THERE ARE NO LITTLE THINGS"

April 5, the Radio Production Class presented over KTRI the play, "There Are No Little Things". The production was directed by Miss Butts.

The story concerns a girl, Peggy, a boy, Johnny, a high school prom, and a dress.

Instead of buying a new expensive dress for the high school prom. Peggy decides to put the price of the dress into War Bonds. Peggy's sacrifice of the dress makes her the heroine of the high school, and the story thus ends happily. The play was presented to promote the sale of War Bonds.

The cast for the radio drama was:  
Peggy - - - - - Bonita Hahn  
Johnny Carter - - - Thomas Wikstrom  
Janie - - - - - Barbara Wright  
Wilkins, the janitor - - Vernell Gunderson  
Marine - - - - - Robert Ray  
Guerilla - - - - - Roland Baker  
Russian Nurses - - - - Virginia Cooper  
                                  Marcille Bohn  
Sales Lady - - - - - Orgine Meents  
Announcer - - - - - Bernard Travaille  
Sound effects by Mildred Jensen and Beverly Rehnblom.



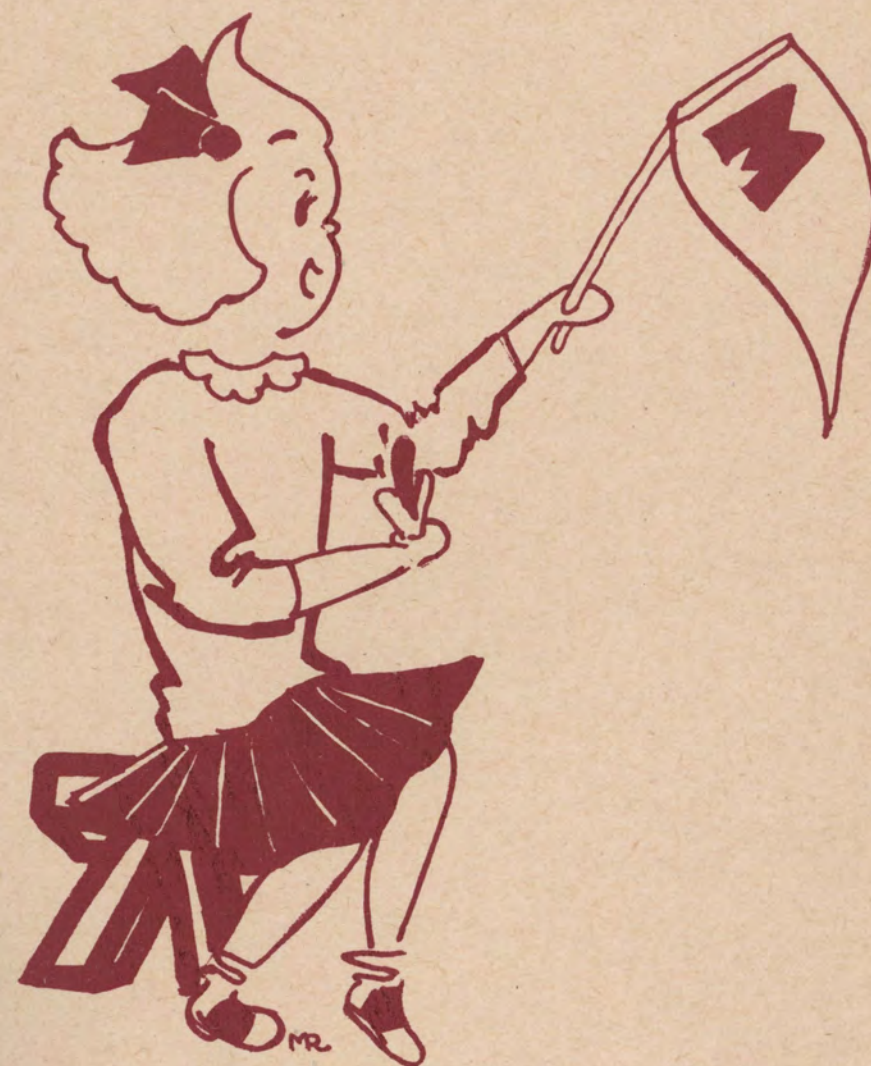




SPOT-LIGHT CHANGES



# Athletics



SI O U X



1945





## DALE HUFF

The faculty secured the services of Dale Huff to coach the Morningside College Basketball team this year. Mr. Huff, a native Sioux Cityan, and a graduate of Central High School, is a real sports enthusiast. His basketball experience includes playing on the Central team while in high school and at the time when Central went to the state tourney.

He later attended Phillip Exeter Academy at Exeter, New Hampshire. There he played basketball for the team which was undefeated and also won the New England Basketball Championship that year.

Mr. Huff is a graduate of Stanford University where he played on the varsity basketball team with the great Hank Luisette. This team held the National Inter-collegiate Championship title for three consecutive years. His coaching experience includes coaching a freshman basketball team at Stanford University.

Under his supervision and due to his interest and time given, the men's sports on the campus have been improved. Morningside owes much to Dale Huff.







## BRUCE KAJI

Bruce came to Morningside the second semester and joined the basketball team. He played in quite a few ball games and was without a doubt the best ball handler on the Maroon team. Bruce too left for the service.

## TOM WIKSTROM

Tom played some very good ball the latter half of the season.

## JOHN WANSINK

John entered Morningside the second semester from East High and contributed many points to the team's games. He also added some much needed height to the Maroons.

## BILL WOLLE

Bill, another second semester boy from Sioux City was the tallest member on the team. Though Bill was "young" at the game he made points for the Maroons when he played.

## JIM FRIBOURGH

Jim, another tall boy, saw quite a bit of action this season. He had an uncanny eye for the basket and was a good rebound man.

## PAUL ZEMAN

Paul played a very good forward position on the team. He is the boy who made the most points of any Maroon player in one game and his score was 19.

## DICK BORNHOLDT

Dick was the long shot of the team coming to be high point man in most of the games. Dick hails from Arnolds Park and was one of the few boys on the team who had played competitive basketball before coming to Morningside. His experience was an aid to the team.

## BRUCE CRARY

Bruce also played forward for the Maroons. He could be counted on to come through with points when the going got tough.

## BILL ELDREDGE

The smallest and trickiest man on the squad is Bill and a favorite with the crowd. He started those last-minute rallies and seemed indomitable. Never tiring, never quitting, he was one of our best men and he'll be back next year.

## BEN OBRECHT

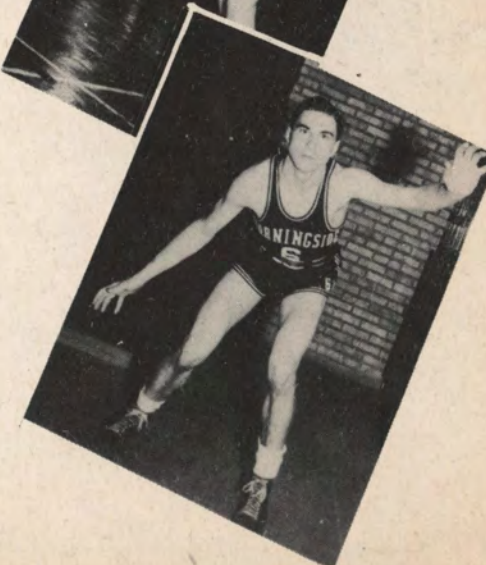
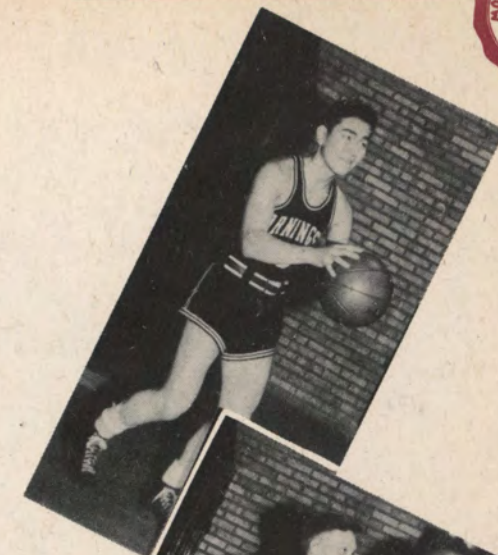
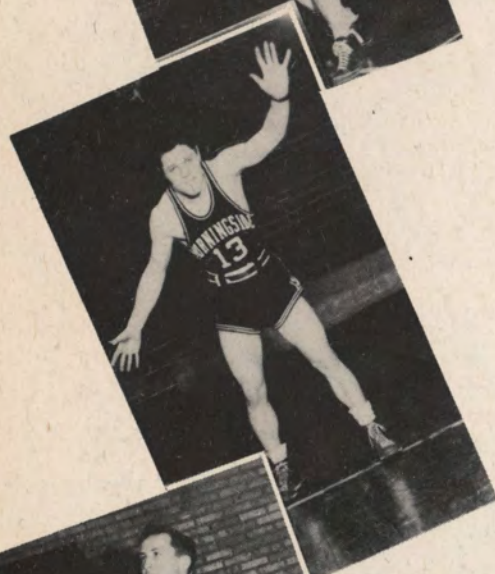
"Benny" played the whole season for the Maroons and put the "spark" as well as quite a few points into our games.

## DAVE COX

Dave was center on the team and his height did him proud. The Maroons found him especially valuable in accurate passing and rebound work.

## TED FORWARD

For the first semester, the Maroons had their best defensive man in Ted. As guard, his abilities were shown to be of value. Ted left school the second semester to go to the army.







## CHEERLEADERS

Our only sport this year was basketball and five cheerleaders were elected by the student body to lead the cheering. They were: Bethel Forsling, Donna Seversen, Lois Emme, Ellen Westergaard, and Marion Hempstead. With the conventional Maroon sweaters and white pleated skirts, they added school spirit to the grandstands. The yell-leaders helped the student body show the team what fine school spirit they had.



## SCHEDULE

					We	They
*December	2	Western Union	-	-	29	42
*December	5	Sioux City Air Base	-	-	18	53
*December	11	C. N. T.	-	-	28	23
December	16	Wayne Teachers	-	-	29	43
*January	5	C. N. T.	-	-	33	44
January	10	Western Union	-	-	34	38
*January	11	Wayne Teachers	-	-	27	25
January	13	South Dakota U.	-	-	34	38
January	17	Buena Vista	-	-	32	41
*January	19	South Dakota U.	-	-	42	45
*January	26	Buena Vista	-	-	51	39
January	27	Wayne Teachers	-	-	35	42
February	2	South Dakota U.	-	-	32	55



MRS. VERLEY NEWSOM

Mrs. Verley Newsom, Head of the Department of Physical Education for Women, came to Morningside this year from the University of New Mexico at Albuquerque, where she served as Assistant Director in the Physical Education Department and was also employed as full-time instructor in that field.

Among other colleges and universities attended by Mrs. Newsom are Kansas State Teachers College at Pittsburg, Kansas; Emporia State Teachers College at Emporia, Kansas, and the University of Wisconsin at Madison, Wisconsin, at which place she did graduate work.

Under the capable supervision of Mrs. Newsom, our department of physical education has now expanded to meet the requirements of a standard program for physical education majors in that field.

Although Mrs. Newsom is greatly interested in all sports and physical education activities, she has participated perhaps to the greatest extent in basketball and tennis. For three consecutive years she won the Kansas State Tennis Tournament, another year was victor in the Cheyenne Rocky Mountain Tournament at Colorado Springs, Colorado, and in 1934, took first honors in the Tri-State Tennis Tournament which included the states of Kansas, Oklahoma and Missouri. But in this particular sport and hobby, she hasn't proven victorious in tennis alone, for it was the tennis court that provided the setting for her challenge for romance. Her husband, who is serving with the navy overseas, has retained his hobby and has recently won a tennis tournament in an "over-seas combat." John, the Newsom's eight-year-old son, plays a definite part in our physical education department also, as "mascot" of the Varsity basketball team.



JOHNNY NEWSOM, eight-year-old son of Mrs. V. Newsom, was mascot for the Maroons this season.







# W. A. A.



The Women's Athletic Association which is affiliated with the Athletic Federation of College Women is an organization including girls who have entered two tournaments or have completed one season in any of the following sports: bowling, badminton, tennis, archery, basketball, volleyball, and softball.

Mrs. Newsom is the W. A. A. adviser. Activities which the organization sponsors during the year are tournaments in all seasonal sports, the Yale-Harvard basketball game, overnight hikes, picnics, and the freshman party.

The women's sports program is controlled by the W. A. A. Board which consists of the director of Physical Education for Women and the officers of W. A. A. The officers are as follows:

President	- - - - -	ELLEN WESTERGAARD
Vice-President	- - - - -	LOIS EMME
Secretary	- - - - -	MELVA TIEMENS
Treasurer	- - - - -	CHARLENE GOETSCHIUS



## INTRA-MURAL CLASSES

The tournaments are sponsored by W. A. A.

### SOFTBALL

The intra-mural softball tournament began Wednesday, October 25. The games were played at 4:30 during the week. Five teams competed in the tournament, namely Freshman Dorm, Kappa Pi Alpha, Kappa Zeta Chi, Alpha Sigma, Freshman Town. The Freshman Town team won the tournament.

### VOLLEYBALL

Six volleyball teams entered the tournament this year, Town Freshman, Dorm Freshman No. 2, Kappa Pi Alpha, Alpha Sigma, Kappa Zeta Chi, Dorm Freshman No. 1. The winner of this tournament this year was Kappa Pi Alpha.

### BASKETBALL

The basketball tournament was held February 12, 1945. Four teams entered the tournament, a Freshman team taking the honors. The teams playing in the tournament were: Freshman No. 1, Freshman No. 2, Kappa Pi Alpha and Kappa Zeta Chi.

### TAPPING CLASS

A tapping class offered for Physical Education Majors has been in session during the year. Dances were learned to be used in the Spring Festival. These routines were taught by Betty Boles.

### TUMBLING TEAM

Practices have been held for all girls interested and with ability in tumbling. These practices were held at noon and in the afternoon offering instruction for those girls interested. This exhibition was used in the Spring Festival.

### ARCHERY

Archery is offered in the Physical Education classes in the fall and spring. This activity is growing popular in school and all girls take an active part in it.

### TENNIS

Tennis is one of the activities being taught also in the Physical Education classes and everyone is trying to learn to play a good game. It is offered both in spring and fall.

### SWIMMING

Swimming is offered for college students during the school year at the Y. W. C. A. pool. All upperclassmen can take swimming there. A swimming meet, sponsored by W. A. A. is being planned.

### BADMINTON

A tournament in badminton was also sponsored by W. A. A. Double's and single's were offered.



## SPRING FESTIVAL

The Spring Festival was presented April 13, 1945, in the Alumni Gymnasium, the theme being the "Magic Carpet" which included imaginary trips through the various lands. It was sponsored by the Physical Education Majors Club.

Pupils of Miss Hazel Bergh presented several ballet numbers and members of the college gym classes furnished the background with folk dancing, tap dancing, and tumbling.

The Festival queen was crowned at the festival and was selected by the popular vote of the student body as a typical queen of the freshmen class.





## MAJORETTES

A new club was organized on the campus this fall under the direction of Mrs. Newsom. All girls who are majoring in physical education are eligible for membership.

The club meets the first Wednesday in each month and the various members plan the recreation period following the meeting.

The Majorettes sponsored the health party at which the health queen and king were presented. The Majorettes cooperated with Mrs. Newsom in the production of the annual spring festival. They learned the dances and taught them to the members of their gym class and as a group the Majorettes presented the American scene in the festival.

The club is looking forward to a large increase in membership in the following years due to the revision of the physical education department and the increased interest of everyone in the field.

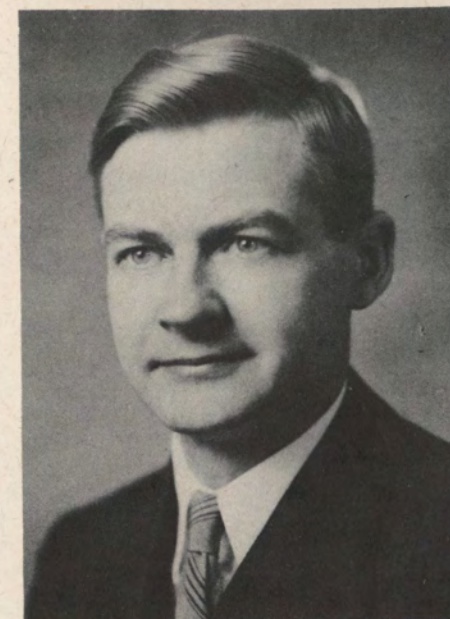
President -	- - - - -	LOIS HELD
Vice-President -	- - - - -	LOIS EMME
Secretary-Treasurer -	- - - - -	AUDREY HUGHES
Reporter -	- - - - -	KATIE HELD



# Features







To

**Thomas E. Tweita**

Philosopher, Counselor, Teacher, Friend,

whose life has been an inspiration to all who know him,

We affectionately dedicate the Sioux of 1945





Miss Ellen Westergaard  
Homecoming Queen

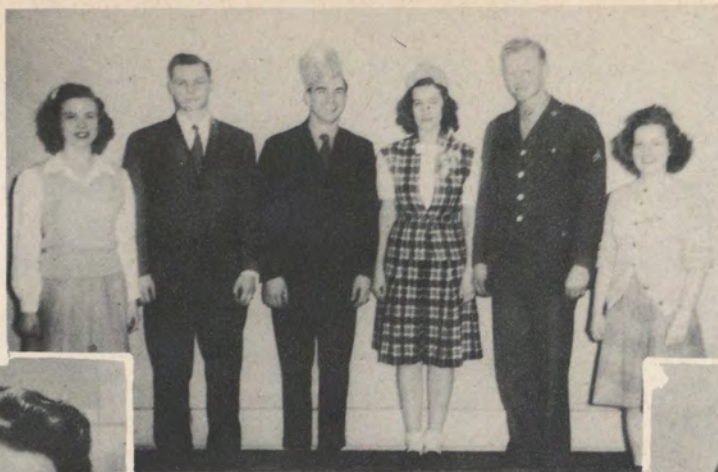


Miss Harriet Keith  
Homecoming Attendant



Mrs. Lyla Hansen Springer  
Homecoming Attendant





Nancy McDonald



Paul Zeman

HEALTH MONARCHS

ATTENDANTS



CHARLENE GOETSCHIUS  
VENITA DEWITT  
DICK BORNHOLDT  
RUSSELL DANIELS



*My Very Best  
Wishes always  
Sincerely  
Harry James*

Mr. Harry James  
Judge of Sioux Queen







Miss Bethel Horsling  
Sioux Queen



Sioux Attendants:



PHYLLIS LEEPER



BONNIE HAHN



PATRICIA WILSON



CAROL HANSEN



EILEEN GUSE



MARY WOOD





# WHO'S WHO

AMONG STUDENTS IN AMERICAN UNIVERSITIES AND COLLEGES



Miss Evelyn Madsen  
Who's Who

EVELYN MADSEN is a senior. She is Student Body President, Secretary to the President of the College, and Vice-President of Agora.



Miss Margaret Ralston  
Who's Who

MARGARET RALSTON is a junior. She was President of the Y.W.C.A. last year and helped reorganize that group. Margaret is interested in journalism, music and dramatics.



Miss Beverly Rehnblom  
Who's Who

BEVERLY REHNBLOM is a senior. She was editor of the College Year Book for 1943-44. Beverly is interested in dramatics, music and journalism.



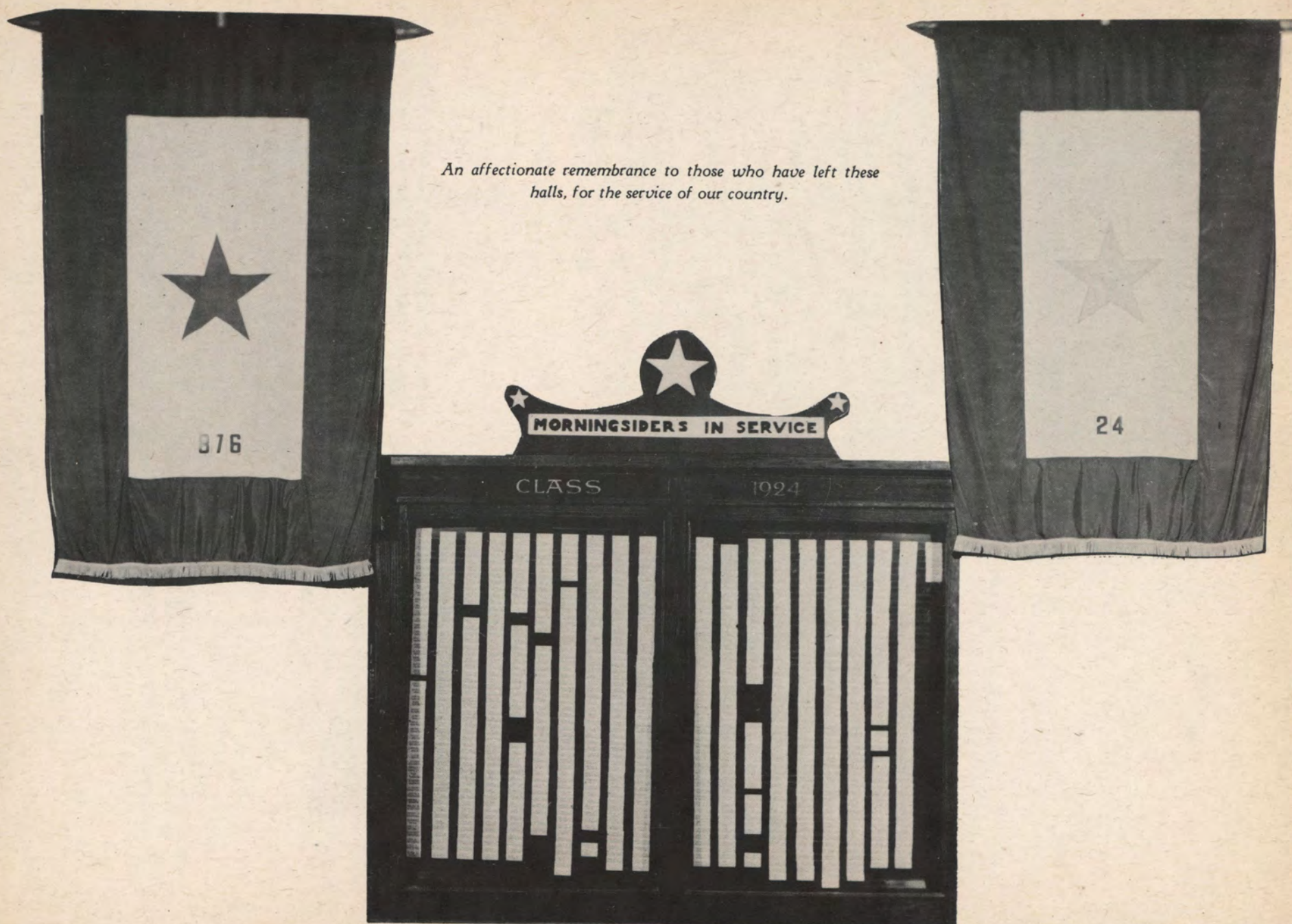
Miss Ellen Westergaard  
Who's Who

ELLEN WESTERGAARD is a senior and is President of W.A.A., W.S.G.A., and of the student body.





*An affectionate remembrance to those who have left these  
halls, for the service of our country.*



*"The Lord watch between thee and me,  
when we are absent one from another."  
—Genesis 31:49*





# MORNINGSIDERS FROM 1938-1945

## In the Service of Their Country

Adams, Charles  
Adams, Edwin  
Adams, Theodore F.  
Adcock, Glen W.  
Addison, George D.  
Alexander, Harold R.  
Allen, Don E.  
Allison, Frank M.  
Ames, Donnin M.  
Anderson, Arnold C.  
Anderson, C. Duane  
Anderson, Merton S.  
Anderson, W. Creg  
Andrews, Robert T.  
Asprey, Gene M.  
Austin, Wayne L.  
Authier, Rene N.  
Bach, Samuel J.  
Bachert, Harold B.  
Bachert, John O.  
Baker, Philip H.  
Baldwin, Clement B.  
Ballantine, George  
Bale, Clyde  
Barber, Robert  
Barnowe, Ted  
Barnum, Alston  
Barricks, Joseph B.  
Barwick, Clarence Jr.  
Baumann, Ernest W.  
Bean, Richard S.  
Beckman, Arthur  
Beckman, William  
Beckwith, John  
Beggs, Douglas  
Bennett, Robert  
Berger, Vilmer  
Berkstresser, Charles  
Binger, Milton R.  
Binger, William P.  
Blair, Clair  
Bliss, Irving  
Bloxham, George  
Bohan, Walter  
Bolton, James  
Bolton, Kenneth  
Bomgaars, Harold  
Bornholtz, George  
Bottolfson, William  
Boysen, Don  
Bradford, William  
Brady, Norman  
Brenneman, Richard  
Brelsford, John  
Briggs, William  
Brink, Donald  
Brooks, Robert  
Brown, Rene  
Brown, Richard  
Brown, Stephen  
Buckingham, Albert  
Bundy, John  
Burrow, Charles  
Burr, Richard  
Burris, David  
Burrow, Glen  
Bush, Bill  
Bush, Ronald  
Carey, Patrick  
Carlson, Lowell  
Carter, Donald

Carter, William  
Castle, Vernon  
Chandler, Robert  
Christiansen, Gordon  
Chambers, Francis  
Churchill, Harold  
Clare, Maurice  
Clark, Glenn  
Clark, Loren  
Clayton, Arthur  
Clayton, Charles  
Clayton, Willard  
Clausen, Marvin  
Cleveland, Parker  
Cobb, James  
Coe, Eugene  
Collins, Perry  
Coomer, Theodore  
Connor, Bruce  
Corkhill, Stanley  
Corwin, Richard  
Crabb, Dayle  
Crabb, Wilfred  
Craven, Robert  
Crowl, William Thomas  
Cromptley, Charles  
Culbertson, John  
Curry, Wendell  
Curry, Charles  
Curtis, Larry  
Dahlin, Robert  
Daniels, Fred  
Danielson, Robert  
Davenport, Alfred  
Davis, Claude  
DeHaan, James  
DeMaine, Joe  
Demetroulis, James  
Denny, David  
DeVries, Stephen  
DeWitt, Clinton  
Dieters, Harold  
Digranes, Oswald  
Dimsdale, William  
Dinan, Joseph  
Dirr, Charles  
Dishlip, Martin  
Dobyns, Charles  
Doliber, Harlow  
Donohue, Kenneth  
Douglas, John  
Down, Thomas  
Dunn, Dale  
Dunn, James  
Duling, John  
Dutton, James  
Dutton, W. Eugene  
Easley, William  
Ehorn, Bob  
Eldredge, Robert  
Elverum, Conrad  
Emme, Eugene  
Epstein, Ernest  
Fairchild, Gordon  
Fallon, Curtis  
Farb, Robert  
Faul, Duane  
Feikema, Bernard  
Feikema, William  
Fellwock, Lynn

Ferguson, Donald  
Ferris, Robert  
Feild, Paul  
Feilds, Melvin  
Fischer, Martin  
Fleckenstein, Robert  
Fleming, John  
Flinders, Dale  
Fobes, Don  
Forbes, Richard  
Forrester, James  
Fowler, Blair  
Freeman, Lawrence  
Fromknecht, George  
Gall, Gary  
Gandek, Charles  
Garretson, Homer  
Garretson, Richard  
Gast, Loren  
Gates, Myles  
Geister, Joel  
Gibson, David  
Gilbert, Dean  
Gilham, Joseph  
Glock, Robert  
Goodenow, Earl  
Goodrich, Orin  
Granter, Hoyt  
Grantham, Harley  
Gray, Billy  
Green, Thomas  
Green, Robert  
Greffe, Rolli  
Grier, Ted  
Gandek, Charles  
Geister, Joel  
Granstrom, Marvin  
Grindberg, David  
Grindberg, Thomas  
Geoskreutz, Keith  
Guster, Russell  
Hart, Albert  
Harvey, Robert  
Hasek, Robert  
Haskins, Gilbert  
Haskins, James  
Hafits, Paul  
Hagberg, Melvin  
Hauck, James  
Hawthorne, Duane  
Haynes, Merton  
Hazard, John  
Heifner, Erwin  
Heitman, Oliver  
Held, Robert  
Helm, Jack  
Hemmingsen, Gail  
Hempstead, Douglas  
Hempstead, Robert  
Hendricks, Edward  
Henry, Lowell  
Herzoff, Stanley  
Hicks, Robert  
Higby, Walter  
Hill, Robert  
Hillman, Ralph  
Hilker, Robert  
Hilsinger, Philip  
Hoefler, William  
Hoffman, Fred  
Holcomb, George

Haenfler, Albert  
Haenfler, Roy  
Halford, Robert  
Hamann, Arthur  
Hamel, Robert  
Hansen, J. T.  
Hanson, Wallace  
Harper, Duncan  
Harrington, James  
Harrison, Morgan  
Harter, Dale  
Hartley, George  
Hartley, Eugene  
Hartman, Darwin  
Holmes, Kenneth  
Howe, Jack  
Huff, Wayne  
Hughes, Rodney  
Hughes, Royce  
Hughes, Thomas  
Humphrey, Robert  
Hunter, Clair  
Hurd, Walter  
Isaacson, Maurice  
Iseminger, George  
Jackson, Dale  
Jackson, Taylor  
Jacobs, Edward  
Jacobi, Leverett  
Jacobson, Milford  
Jacobson, Thomas  
Jacobson, Verne  
Jacobson, Wilbur  
Jeffers, Walter  
Jenkins, Judson  
Jensen, Forrest  
Jensen, Fred  
Jensen, John  
Jensen, Malcolm  
Johnson, Andrew  
Johnson, Bob  
Johnson, Homer  
Johnson, Kenneth  
Johnson, Kenneth D.  
Johnson, Leonard  
Johnson, Robert C.  
Johnson, Warren  
Jones, Feldman  
Jones, Francis  
Jones, Lamar  
Jones, Paul  
Jorgensen, Allan  
Kahoun, Frank  
Karrroll, Nick  
Kasper, Vernon  
Kass, Thomas  
Keil, Dwayne  
Keith, D. James  
Kelly, Frederick  
Kelsey, John  
Kelsey, Wilbur  
Kern, Edward  
Kerzie, Steve  
Kielhorn, Walter  
King, Douglas  
King, Richard  
King, Wayne  
Kingsbury, Francis  
Kingsbury, Warren  
Kipper, Robert

Kirchner, William  
Klas, Bruce  
Klas, Richard  
Klousia, Harold  
Knudson, Lyle  
Koch, Edgar  
Koch, George Webster  
Koelling, David  
Kolp, Berton  
Kolp, John  
Konopis, K. A.  
Kopp, Charles  
Kraft, George  
Kronick, Lloyd  
Krznarich, John  
Kudrle, Robert  
Kuhler, Warren  
Kuhlmann, Jesse  
Ladwig, Harold  
Laffoon, Jean  
Lahann, Robert  
Lamkin, David  
Lamkin, Romain  
Longstaff, Delbert  
Lanning, H. Everett  
Lapsley, Robert  
Law, John  
Lease, Joseph  
Lee, Orville  
Lechner, Richard  
Leopold, Donald  
Levich, Calmon  
Lewis, Clifford  
Lijstrand, Eric  
Lindsey, Bruce  
Lindsey, Duane  
Litecky, John  
Loewenberg, Eryin  
Loff, Jack  
Logan, Frank  
Lohry, L. William  
Long, Robert E.  
Lowry, Robert  
McAnally, Paul  
McBride, George  
McCleery, Kendall  
McConnell, Howard  
McCoy, Max  
McCoy, Gerald  
McCracken, Edgar  
McElravy, Doane  
McGilvra, Harold  
McKellips, Roger  
McLaughlin, Edward  
McLaughlin, Richard  
McLaughlin, William  
McLoughlin, Francis  
Macur, Ted  
Macur, Joe  
Magnuson, Marion  
Mahood, Lewis  
Mahrt, Clifford  
Malone, Thomas  
Marshall, Stanley  
Mathers, Norman  
Mayer, George  
Maynard, John  
Martin, Russell  
Mazur, Joseph  
Meacham, William

## GOLD STARS

"They shall not grow old as we that are left grow old.  
Age shall not weary them nor the years condemn.  
At the going down of the sun and in the morning,  
We will remember them."

—Laurence Binyon

Alexander, James H. Jr.  
Bahmer, David M.  
Brostrom, Lambert  
Brown, Ralph O.  
Brown, Robert E.  
Buchmiller, Lowell E.  
Buckholz, Rolli  
Chambers, Raymond  
Frum, Marvin  
Garlock, Charles  
Keightley, Louis  
Hess, Donald  
Kennedy, Robert Eugene  
Keve, John  
Lebeck, Howard  
Leeds, Leonard  
McKnight, Melvin  
Moon, Robert  
Prechel, James  
Seeman, Albert  
Skalby, Clifford  
Sifford, Ross  
Spiry, Orval  
Sogge, Robert  
Sterling, Robert  
Thelan, David

Melles, Leonard  
Metcalfe, Kenneth  
Michaelson, Don  
Miller, Srerling  
Mills, Daniel  
Mitchell, Hobart  
Mogck, Oliver  
Montagne, John  
Moon, Thomas  
Moore, Byron  
Moore, Warren  
Morris, Lewis  
Morrison, H. G.  
Morrison, Jack  
Morrison, James  
Morse, Wilbur  
Mossman, F. Leroy  
Motz, Edward  
Mott, Homer  
Mousel, Leroy  
Mucky, Max  
Muller, Henery  
Munger, Stanley  
Murray, William  
Mutchler, Norman  
Meyers, Robert

Nagamore, Takeo  
Nagy, Vincent  
Naryka, Joe  
Nelson, Dean  
Nelson, Franklin  
Nelson, Leonard  
Nelson, Vernon  
Nettleton, Guy  
Newman, Sibley  
Nomsen, Richard  
Nold, Maurice  
Norris, John  
Nutt, Charles

Oakleaf, Douglas  
Obrecht, Gayle  
Obye, Charles  
Ohlson, Filmore  
Olsen, Elwood  
Olsen, Walter  
Olson, James C.  
Olson, Lester  
Olson, Robert F.  
Osborn, Charles  
Osborn, Edwin  
Ott, Orlan  
Otto, Robert

Paget, Robert  
Palmquist, W. John  
Parkér, Charles  
Parks, Gerald  
Parry, Thomas  
Parsons, LeRoy  
Parsons, Robert  
Payson, Richard  
Peterson, Howard  
Peterson, Marlyn  
Peterson, Victor  
Pentony, De Vere  
Pepper, William  
Peete, Richard  
Persinger, C. William  
Peters, Egbert  
Peterson, Dwayne  
Peterson, Francis

## SERVICE MEN

Peterson, Paul  
Pohlen, Paul  
Porter, Lester  
Porter, Maynard  
Posey, Bernard  
Posey, Kenneth  
Power, William  
Poyzer, Lyle  
Prescott, William  
Puhmann, Melvin  
Pullman, George  
Rafdal, Alton  
Ralston, Lowell  
Ralston, Paul  
Rance, Jay  
Rahn, Harold  
Ralya, Earl  
Reed, Rex  
Reed, Warren  
Reese, T. Robert  
Reinking, John  
Reynolds, Don  
Reynolds, Wilson  
Rhoades, Donald  
Rich, Darol  
Richards, Charles  
Rider, Wyman  
Ring, Dean  
Ringland, Joe  
Robar, Merle  
Roberts, Robert  
Robinson, Frank  
Rockwell, Richard  
Roehrs, F. Stanley  
Rogers, John  
Rogers, Milo  
Rogers, Robert  
Rollins, Kenneth  
Ross, Ralph  
Rossi, Elmendo  
Rowley, Kenneth  
Rozeboom, William  
Ruby, Kenneth  
Ruleman, Robert

Sakamoto, Elton  
Saltwell, Eldred  
Sanford, Boyd  
Saunderson, George  
Sawin, Alvern  
Scaboo, Gust  
Schaal, Lawrence  
Scheffel, Harry  
Schellenger, Roy  
Schmidt, Sylvester  
Schwarz, Ira  
Schwinn, Robert  
Scott, Kenneth  
Sease, Lloyd  
Seeley, George  
Severeide, Donald  
Seward, John  
Shaffer, Robert  
Sharp, Hubert  
Sharp, Robert  
Sheldall, Gordon  
Shelton, Verne  
Sheridan, Charles  
Shkurensky, Julius  
Shortenhaus, Leon  
Sipma, John  
Simon, Robert

Versteeg, Clarence  
Voris, Clarence  
Wachter, Wilfred  
Waggoner, Glen  
Wagstaff, Robert  
Walensky, Theodore  
Wallen, E. James  
Wallman, Gary  
Walter, Byron  
Waples, James  
Warner, Darrel  
Washburn, Arthur  
Weiner, Martin  
Wellmerling, H. Fred  
Welton, Ted  
Wennersten, Floyd  
Werder, Richard  
Wetmore, Charles  
Whicher, Theodore  
Whitebeaver, Ruben  
Whitehill, Charles  
Whitver, Charles  
Wicker, Jay  
Wickstrom, Ralph  
Widler, Donald  
Wiedenfeld, John  
Wilde, Linn  
Williams, Clifton  
Williams, John  
Williges, George  
Willson, Scott  
Wilson, Floyd  
Wilson, Howard  
Winn, Roger  
Winter, Francis  
Witt, Wendell  
Wolle, C. Packard  
Woods, Odell  
Woodson, John  
Wright, Dale  
Wright, William  
Younglove, Roger  
Yamamoto, H. H.  
Yeager, Robert  
Yeager, Walter

## SERVICE WOMEN

Bock, Marorie  
Bries, Beverly  
Cameron, Julia  
Cose, Chyrl  
Elverum, Anna  
Forrester, Barbara  
Gehrt, Lucile  
Hewlett, Evelyn  
Hollstein, Alberta  
Hosner, Jean  
Kingsbury, Nancy  
Lewton, Barbara  
Littlejohn, Neva  
Long, Margaret  
Marcussen, Zola  
McBride, Mary  
Meyer, Kathryn Horrigan  
Muilenberg, Avis  
Peden, Vivian  
Pickersgill, Lillian  
Pirie, Marjorie  
Runge, Jean  
Seavey, Alberta  
Shipley, Alma  
Walker, Martha  
Weaver, Helen  
White, Ellen  
Wikstrom, Carloyn  
Wolf, Gladys  
Zenkovich, Anna

## MISSING IN ACTION

Breaw, Edwin  
Carlson, Howard  
Dunn, Homer  
Forbes, Dean  
Gross, Norman  
Haffits, Joseph  
Iverson, Marvin  
Lauterbach, Theodore  
Michaelson, Byron  
Poppenheimer, Paul  
Thompson, Robert

## PRISONERS OF WAR

Beebe, Lewis  
Billman, Vernon  
Frakes, Robert  
Gillespie, Laurie  
Hahn, Devon  
Hakala, Robert  
Jackson, Robert  
McHale, Thomas  
McMillan, Paul  
Meents, Edward



WELCOME  
BACK  
FELLAS



~116~

1 9 4 5



SIUX



~117~

SIUX



1 9 4 5



MORNINGSIDE COLLEGE Featured in

# LIFE

November 7, 1944









SOLDIER  
STUDENTS



THE ALPHA SIGS







*"Morningside, Morningside——"*



*"Best of any school on earth,  
you'll soon decide——"*







*"Take me back  
to student days  
at Morningside"*



# Specialties







# FESTIVAL QUEEN



La Vonne Johnson      Kathryn Nelson      Charlotte Kingsbury

## MORNINGSIDE'S MODEL

Winifred Osbey







# WEDDING BELLES



# "TOGETHER"







DORM DAISIES



THE PI'S







## THE ZETS



## SPORTS SNAPS







PIN-UP POSES



PARTY-ING











Dear Diary:

The glad tidings of the school bell are ringing out the prospects of another school year. I wonder what will happen during this year?

SEPTEMBER:

- 14—Sioux City Freshmen entertained at banquet. Who said there was a meat shortage? We had fried chicken and for free!
- 18—Welcome Freshmen and new instructors. Glad to see so many additions to the campus.
- 19—Freshmen registration and placement tests. Does your mother beat your father?
- 20—Freshmen Talent Show. The Wood's twins really gave out with their trumpets.
- 21—21—W. A. A. sponsors party for old and future members.
- 22—Big-Little Sister Tea. All girls decked out in their best bib and tucker for the event.
- 23—Upperclass registrations. Total enrollment is now 188 women and 54 men. Darn that manpower shortage.
- 28—Farewell party for Rev. Victor V. Schudt and Mr. Thorton N. McClure.
- 28—All-College Dance. Men from the air base come to our rescue so that everyone could dance.

OCTOBER:

- 3—Patrice Munsel concert. Freshmen initiation. Harold and Connie portrayed an A. B. C. Romance.
- 5—Freshman-Sophomore Day. Freshmen won, but lost. Understand?
- 6—Y. M. C. A. Party. Everyone excited about the appearance of the LIFE photographer on the Morningside Campus.
- 9—Y. W. C. A. initiates new members.
- 13—Homecoming. Barbecue and Song Contest. "Westy" crowned queen at impressive ceremony. Minor led the snake dance. What nerve!
- 14—Homecoming dance at Alumni Gymnasium. Alumni banquet at dorm.
- 20—Y. W.-Y.M. conference at Sioux Falls.
- 21—Women's Faculty Club sponsored the annual faculty autumn frolic.
- 30—Joseph Szigeti, violinist, appeared on Orpheum stage.

## NOVEMBER:

- 1—Dorm Hallowe'en Party.
- 2—Sgt. Robert Spaulding from the Sioux City Air Base tells of his experience overseas at Chapel.
- 3—President and Mrs. Roadman left for a three weeks' "goodwill tour" of the West.
- 6—Mad rush for the new issues of LIFE Magazine.
- 11—College sponsors Victory Dance after the East-Central game.
- 14—Cheerleader tryouts.
- 15—Agora Leadership Dinner at the Mayfair Hotel.
- 17—All-College Class Party. Everyone enjoys the Virginia Reel.
- 20—Sixth War Loan Drive begun.
- 23-26—Thanksgiving Recess.
- 30—Freshmen girls' tea at Mrs. Buthman's home.

DECEMBER:

- 6—Dr. Christopher Tang visits campus.  
7—Death of Edwin Jurgenson, friend and musician.  
11—Sidney Foster, pianist, appears on Concert Course.  
15—"Junior Miss" a success. "I'll be blamed if I hang her," muffed Traville.  
16—Faculty Club enjoys Christmas party.  
17—Dormitory girls have formal Christmas dinner.  
20—Beginning of Christmas recess.

JANUARY:

- 3—Christmas recess closes.  
4—"Clang, Clang, we bought the trolley."  
11—Pi's present Chapel.  
12—Zet open house.  
18—Alpha's Sig's present chapel.  
25—Six receive diplomas at mid-year commencement. Mr. Benjamin F. Schwartz, chancellor of Nebraska Wesleyan College, gave the address.

## FEBRUARY:

- 3—Death of Douglas Reeder, former faculty member, musician and friend.
- 5—Second semester begins.
- 6—Y. M.-Y. W. gives party for newly enrolled students.
- 9—Dorm Formal Valentine Dance. Harriet Baker heartily welcomed by all when she brings the soldiers from the air base as escorts.

DIARY 1944-1945 (Continued)

FEBRUARY:

- 12—Beginning of Valentine Week. Who gave you that to give to me?  
13—Heart Sister Party.  
16—Collegian Style Show and Dance at the dormitory.  
21—Mother-Daughter Tea.  
26—Stage Revue.

MARCH:

- 1—Mu Phi tea. Zets present chapel.
- 2—Alpha Sigma open house.
- 6—Beginning of Religious Emphasis Week. Speaker is Dr. H. Bollinger, secretary of the board of education of the Methodist Church.
- 29—Mid-Semester and time for grade books. Thank goodness these aren't being mailed home.
- 30—Easter recess begins. More trips to service camps.

APRIL:

- 1—Easter Sunday.  
3—Easter recess closes.  
7—Ishkoodah formal.

MAY:

- 5—Y. W. C. A. cabinet retreat.  
20—Girl Reserve Tea.  
Senior week and beginning of final exams.

JUNE:

- 3—Baccalaureate.  
5—Commencement.

Well, Diary this has been a super-wonderful year. All my friends are leaving—  
but I'll see them next year again.





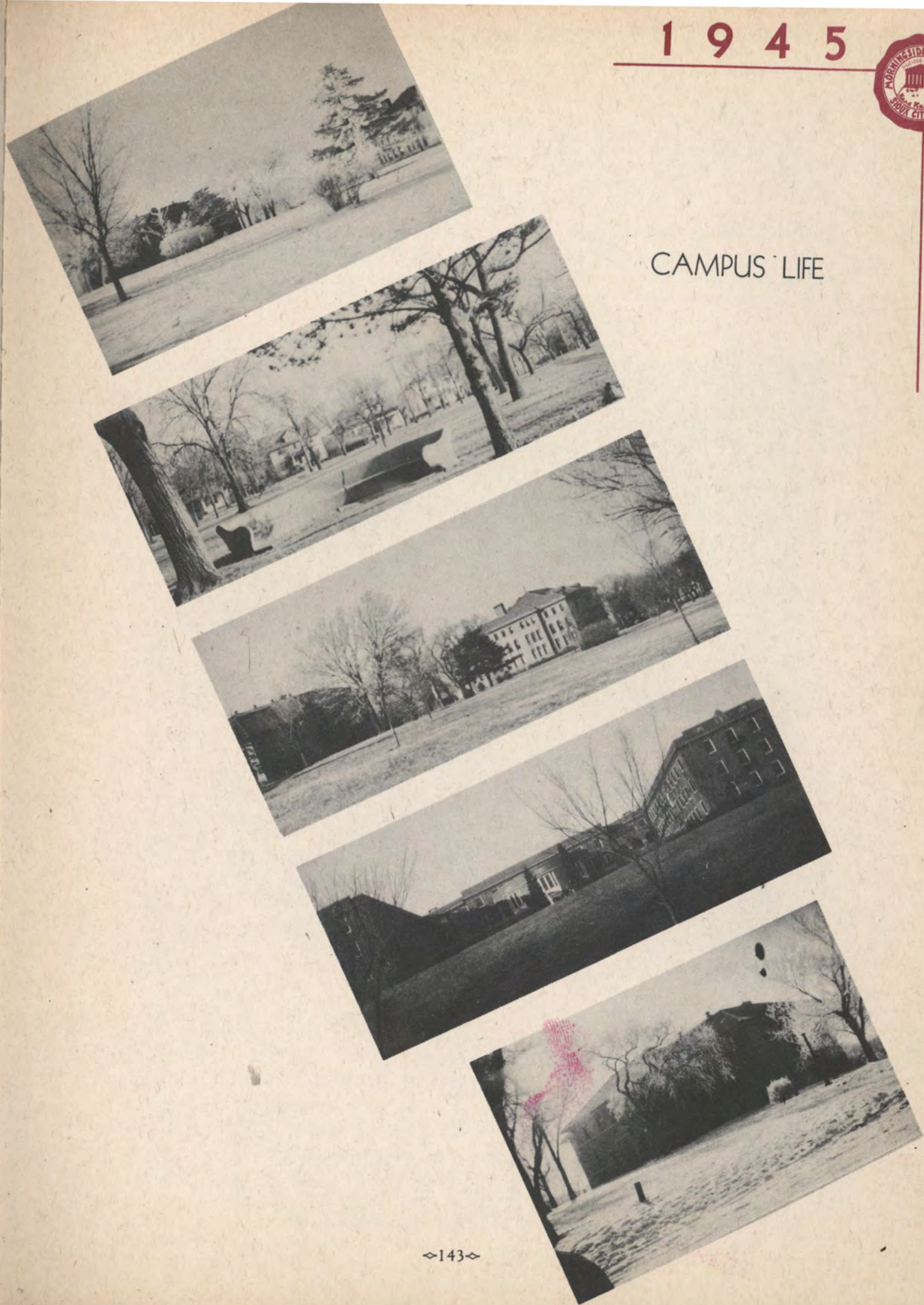


1945



SIoux

CAMPUS LIFE





THESE ADS MAKE THIS BOOK  
POSSIBLE...

Please Patronize Our Advertisers.

"LOOK THIS WAY PLEASE"



**THE KEY TO A SAFE TOMORROW—  
CONSISTENT SAVING TODAY**

Well-planned saving is postwar planning. Regular purchases of War Bonds and Stamps, consistent deposits in your Savings Account now will amply take care of tomorrow's needs.

Open an account at this bank today.

**FIRST NATIONAL BANK**  
IN SIOUX CITY

Member Federal Deposit Insurance Corporation

ALL THE BEST  
PICTURES WILL PLAY  
AT YOUR  
**ESQUIRE  
THEATRE**

**GRADUATES!**

"The Best People in the World are those that think twice before spending a dollar."

Be Thrifty  
Start Your Savings Account  
at the

**Toy National Bank**  
Fourth and Nebraska Streets

WHAT! TOGETHER AGAIN?



**Congratulations!**

You've come a long way since you started to school. In no other land do they have the educational opportunities it has been your privilege to enjoy. Keep it that way for those who will follow you. Only an enlightened America can keep us free and strong.

Your Power-ful Friend,  
**Prof. Reddy Kilowatt**

**Sioux City Gas & Electric Company**





Compliments of  
**BUSH CLEANERS**  
*"Just Off the Campus"*  
 1417 Morningside Avenue  
 Phone 6-7355 Sioux City, Ia.

Flowers for All Occasions  
  
**FERRIS FLORIST**  
 Warrior Hotel  
 Phone 8-7554

Compliments of  
**Hansen Glass  
 & Paint Co.**  
 Phone 5-8863  
 504-10 Douglas Street

**Buck's**  
**BOOTERIE**

Phone 5-5814 420 Pierce St.

# MEN-Y MEN



The Favorite Candy of the Northwest . . .

**LA FAMA Chocolates**

ONE OF A FAMILY OF FAMOUS CHOCOLATES

Made by  
**JOHNSON BISCUIT COMPANY**  
 Sioux City, Iowa

**Olsen Paint and Glass Co.**

• • •

4010 Morningside Ave.  
 Phone 6-6114

610 Pierce Street  
 Phone 8-7171

# FROSH-SOPH DAY AGAIN



Finest Groceries,  
 Meats and  
 Fresh Fruits  
 and  
 Vegetables

AT

VAN EATON'S  
**O.P. SKAGGS**  
 FOOD System STORES

Where Youth and  
 Style Meet . . .

**MOREY'S**

620 Fourth Street

FRED J.  
**SCHAMP**  
 MUSIC CO.  
 414 PIERCE ST.  
 SIOUX CITY



THE  
Council Oak Stores

Better Foods for Better Living

IOWA

NEBRASKA

SOUTH DAKOTA

MINNESOTA

RELAXING



MOLSKOW  
PHARMACY

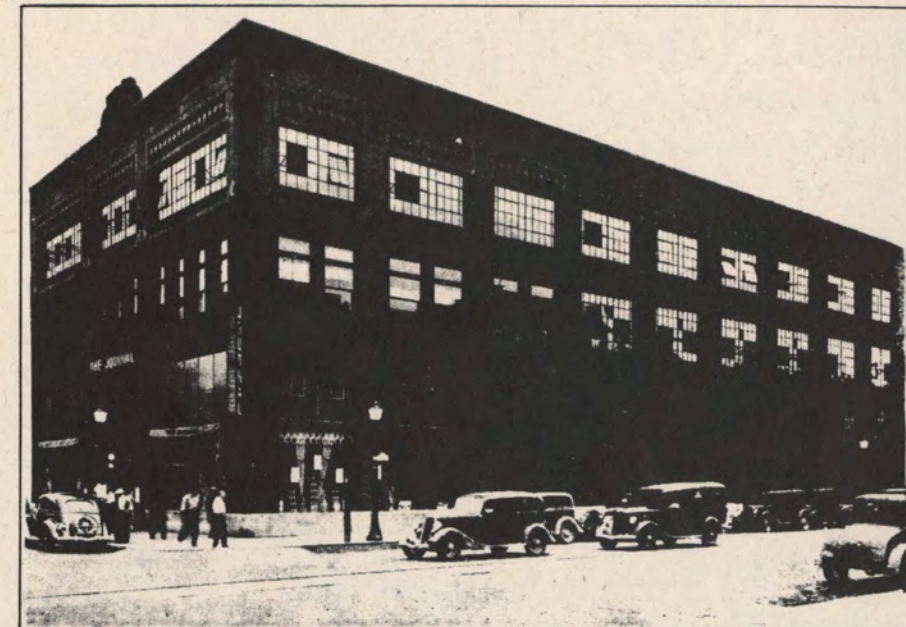
JOHN MOLSKOW, Proprietor

Phone 6-6914



2004 S. St. Aubin

Sioux City, Iowa



From the Four Corners of the  
Earth . . . Twenty-four  
Hours a Day . . .

comes the latest news in the field of foreign affairs . . . .  
politics . . . . sports . . . . local and state news . . . .  
editorial comments . . . news from Washington by world  
famous political analysts! All brought to you hot off the  
wire so that you may be constantly abreast of the times!  
For news when it is news read . . .

THE SIOUX CITY JOURNAL  
and JOURNAL-TRIBUNE  
Plus the Big  
SUNDAY JOURNAL



EAT  
with the College crowd at  
DUSTY'S  
**PARK LUNCH**  
PETERS PARK

**Sioux City  
Stationery Company**  
COMMERCIAL STATIONERS  
PARTY FAVORS  
413 Nebraska Street

Morningside  
Savings  
Bank  
COMPLETE BANKING  
SERVICE

**GRAYSON'S**  
SUITS ME  
Fourth and Douglas  
Sioux City, Iowa

FACULTY AND FRIENDS



Bottled  
in  
Sioux City



by the  
**Chesterman  
Co.**

PAUL A. WARNER  
President and General Manager  
**ADAIR-WARNER PRINTING CO.**  
PRINTING WITH SERVICE

516 Sixth Street

Phone 8-7831

Sioux City, Iowa

FACULTY PHOTOS



**ANDERSON'S  
BAKERY**

Morningside's High-Class  
Pastry Shop  
At Peters Park  
Phone 6-5966

Quality with Good Service  
at the

**Greigg's House of  
Hamburgers**

Phone 6-9249 1405 Morningside Ave.

Fountain Service  
Drugs, Sundries, Toiletries,  
Magazines

**Campus Pharmacy**

W. J. Shane, Prop.  
1423 Morningside Ave. Phone 6-9271

Compliments  
of a  
Friend



Serving Since 1915

**THALLAS**  
"House of Flowers"



Sixth and Nebraska Streets

Office Tel. 8-3595 Greenhouse 5-5541

**SCHWARZ'S**  
Luncheonette

KINFOLK



**STUDENTS' STORE**

Make Our Drug Store Your  
Drug Store

You Will Find Lowest Prices In Town, Plus that Personal Touch  
with Super Service Added

**BARNEY'S MORNINGSID**  
**PHARMACY**

THE REXALL DRUG STORE

**BEN FRANKLIN STORES**

4006 Morningside Ave., Peters Park

**"THE DIME STORE**  
**at PETERS PARK"**

Everything from Five Cents to  
One Dollar and Up

T. L. SCHAEFER, Proprietor

BEFORE AND AFTER



Compliments  
of  
**Morningside**  
**Self-Serve**

Compliments  
of a  
Friend



# SECURITY NATIONAL BANK of Sioux City

Member F. D. I. C.

## MAN SHORTAGE?



## Dwight Hauff Sporting Goods Co.

Agent for

511 Pierce St.

Sioux City, Iowa

*Up to Date Athletic Equipment*

Telephone 8-1877

Complete Banking Service



## WOODBURY COUNTY SAVINGS BANK

Drink a Glass  
of MILK for  
Pep and Good  
Health



Milk and Ice Cream  
Dealers  
of Sioux City

## AFTER SCHOOL



Diamonds  
Watches

Silverware  
Jewelry



418 Pierce Street

Phone 5-8318

Sioux City, Iowa

Diamond Merchants  
Silversmiths

Compliments of

**Ben's & Company**

Jewelers

Phone 5-8225

Sioux City, Ia.



Children a Specialty  
Weddings - Groups  
Portraits

# Robert's Studio

"Exclusive Portraits"

"The Gift of Remembrance"

539 Badgerow Building  
Phone 8-4726  
Sioux City, Iowa

## INDEX

### A is for Ambition—Always heard about but never demonstrated.

Agora	47
Alpha Sigma	64, 65, 132
Anderson, Delores	33, 74
Arends, Jean	33, 67
Arredondo, Emelio	32, 33, 55, 58, 86
Athletics	91 thru' 100

### B is for Billionaire—The aim of any gold-digger.

Baer, Ernst	26
Baker, Harriet	33, 69
Baker, Roland	43, 88
Bales, Elbert	38, 50, 74, 86, 122
Balkema, John	33, 50, 86
Band	76, 77
Bane, Opal	38, 74, 76
Barbero, Ramon	38
Becker, Anton	33, 58, 74
Behling, Gladys	43
Berg, Emma	38
Bergh, Beatrice	17
Berkstresser, Dr. C. F.	17
Beverly's Skit	87
Blair, J. Birney	43, 86
Blessing, Jean	29
Blue, Darlene	43, 74, 76
Bohn, Marcille	22, 52, 69, 86, 88, 129
Boles, Betty	22, 67
Bornholdt, Richard	38, 94, 106
Bourette, Helen	43
Bremer, Gordon	43
Bruce, Eunice	38, 58, 78
Burgel, Henry	35
Burow, Arlene	38
Burris, Mrs. C. E.	17, 57
Burris, C. E.	17, 57
Butts, Ruth	14, 63, 85
Bush, Clyde	41, 122
Bttson, Lois	38
Byers, David	37, 74, 76, 80, 86, 87

### C is for Cram—It happens the night before exams—if you have time.

Cairy, Betty	22, 47, 63, 69
Campus Life	143
Carter, Laura	35, 57
Carter, Mrs. Lorena	17
Castle, Mary	41, 50, 52
Chamberlin, Mary	22, 65, 74, 78
Cheerleaders	96
Choir	74, 75
Christians, Marvella	38
Clayton, Ralph	22, 50, 59
Clayton, Richard	14
Clayton, Mrs. Richard	14
Clement, Ruth	38, 74
Collegian	52, 53
Con Capers	82
Conrad, Mary Jane	33, 47, 55, 58, 69, 76, 78
Cooley, Corinne	22
Cooper, Virginia	35, 88
Cosmopoliton	57
Coss, James A.	14
Cox, David	33, 50, 58, 94
Coyle, Norma	38, 87
Crandall, Lela	38, 59, 74, 76
Crary, Bruce	38, 52, 55, 86, 94
Crase, Mary Lou	38, 74
Crow, Priscilla	29, 67, 74, 80
Crowley, Constance	33, 74, 78
Curtis, Maxine	38

### D is for Drudgery—Something a student lives by.

Dahlberg, Lois	41
Danese, Denny	41
Daniels, Russell	38, 52, 108, 122

Davenport, Doris	43, 78
Dayton, Everett	41, 58, 74, 86, 122
Dedication	103
Deirup, John	38, 86
de St. Paer, Betty	37, 74, 87
DeWitt, Veneta	33, 67, 106
Diary	140, 141
Dick, John R.	26
Dilly, Constance	32, 33, 67, 86
Dimmitt, Lillian E.	14
Dirr, Laurel	43, 63, 67, 74
Dorm Daisies	123
Dornbusch, Arlene	21, 22, 65, 74, 81
Downtown Division	44
Dramatics	83 thru' 90

### E is for English—Same as Latin. Understood only by teachers.

Ebert, Deloris	47
Ehlers, Betty	43
Eisentrager, Elaine	33, 50
Eldridge William	37, 38, 50, 86, 94, 122
Elton, F. J.	14
Emme, Lois	22, 28, 48, 50, 69, 96, 98, 100
Evans, J. Dean	18
Evans, Marilyn	33, 52, 69, 129
Everett, Eleanor	43, 74

### F is for Failure—A teachers way of saying, "Please stay!"

Faculty	9, 10, 11, 12, 13, 14, 15, 16, 17, 18
Fagan, Leona	33
Features	101 thru' 137
Feller, Vesta	38
Ferris, Charles	122
Festival Queens	129
Feyder, Gloria	35, 67
Fischer, Laura	14
Flick, Arlys	38, 74
Forsberg, Mary	38
Forsling, Bethel	32, 33, 69, 87, 96, 108
Forward, Theodore	41, 94
Frasch, Betty	41, 74
Fredrickson, Mrs. Bonnie	17
Fribourgh, James	41, 94
Friis, Arnold	33, 74, 76
Frosh-Soph Day	62
Future Teachers	60

### G is for Gum—Something to "crack" and annoy teachers with.

Gaffey, Glenn	38
Gifford, James	43
Gilbert, Ardis	43
Gillespie, Sally	86
Gillespie, Robert	41, 52, 86
Goetschius, Charlene	29, 52, 69, 98, 106
Gonzales, Delores	41
Graber, Myron E.	13, 55
Graber, Mrs. Myron	18, 69
Grace Collegians	59
Grafton, Mrs. Margaret	18
Grammer, Lois	14, 81
Gray, Mrs. Clara	14
Green, Pierce	43
Griffin, John	23, 50
Grueskin, Doris	43
Gunderson, Vernell	43, 88, 122
Guse, Eileen	23, 47, 52, 63, 65, 74, 109
Gwinn, Ira J.	15

### H is for Half-hearted—Way in which a person studies.

Hackett, Irene	39
Hahn, Bonita	23, 50, 65, 74, 76, 78, 81, 88, 109
Hakala, Lucille P.	26
Hall, Evelyn	39, 74, 76



Hansen, Carol	34, 50, 109
Hansen, Hope	39, 74
Harding, Helen	39, 74
Harding, Marvel	34, 67
Harms, Dorothy	34, 65
Harms, Lavonne	39
Harris, Inez	23, 52, 57
Hartman, H. W.	18
Hasselman, Ruth	38
Havighurst, Constance	34, 37, 56, 60, 61
Haviland, Lorraine	23, 63, 67, 74, 76, 78
Hawthorne, Horace B.	15
Health Monarchs	106
Held, Darlene	34, 69
Held, Esther	39, 67, 74
Held, Katherine	34, 69, 100
Held, Lois	23, 63, 69, 100
Held, Ruth	29, 69, 74
Hempstead, Marion	39, 96
Hench, Mary	39
Henderson, Barbara	43, 74
Henry, Boyd	29
Hinrichs, Irene	23, 65
Homecoming	104, 105
Honor Roll	112, 113, 114, 115
Horn, Joyce	39, 59, 74, 76
Howe, Jack	43, 122
Hucke, Alvina	39
Huff, Dale	93
Hughes, Audrey	28, 29, 47, 63, 67, 100
Huxtable, Rosemary	23, 57

#### I is for Ignorance—Ignorance is bliss.

Ibs, Robert	39
Innes, Josephine	39, 78
Inter-Sorority Council	63
Intra-Mural Classes	99
Ishkoodah	61

#### J is for Joyful—Emotion expressed on arrival of a holiday.

James, Harry	107
Jensen, Mildred	24, 50, 52, 88
Johnson, Joan	29, 50, 58, 69, 129
Johnson, Lavonne	39, 61, 129
Junior Miss	86

#### K is for Knowledge—???????

Kahoun, Jeanette	21, 24, 57, 69
Kaji, Bruce	43, 94
Kanthlener, Henry	18, 58
Kappa Chi	58
Kappa Pi Alpha	66, 67, 133
Kappa Zeta Chi	68, 69, 134
Kasten, Marjorie	28, 29, 56, 69
Kayahara, Kaoru	34
Keehn, Betty	39, 74, 76
Keith, Harriet	24, 50, 63, 65, 74, 76, 81, 105
Keizer, Lewis	43
Keller, Donald	31
Kingsbury, Charlotte	39, 129
Kingsbury, Lovice	34, 52, 55, 58, 60, 69, 78
Kirkpatrick, James E.	15
Kobayashi, Mary	35, 57
Krska, Melvin	35, 59
Kucinski, Mrs. Ethel	15
Kundert, Patricia	29

#### L is for Lessons—The cause for most unhappiness.

Lambert, Frank	43
Lang, Marcella	39
Langley, Roy	18
Larson, Fern	39
Laude, Audrey	39, 74, 76, 78
Lease, Gus	24, 50, 74, 80, 86
Leeper, Phyllis	35, 52, 69, 109
Lehmberg, Janyce	39, 74, 76
Lekas, Theodore	24, 74, 76

Lembcke, Mary Louise	43
Leonard, Dorothy	29, 81
Life	118, 119, 120, 121
Lobb, Gladys	26
Loepp, David	41, 59, 74, 86
Lyle, Shirley	34, 65
Lynch, Mrs. Helen	18
Lynn, Irene	39, 76

#### M is for Monkey business—It goes on most of the time.

MacArthur, Mrs. Mae	18
MacCollin, Mrs. Elizabeth	15
MacCollin, Paul	15, 73
MacDougal, Marilyn	34, 56, 67
Madsen, Beulah	39
Madsen, Evelyn	24, 47, 48, 52, 63, 69, 110
Mahoney, Parnell	18
Majorettes	100
Marsh, Emma Ruth	43
Mathwig, Leroy	32, 78
Mattson, Amy	39, 65
McCallum, Lois	37, 39, 59, 74, 76, 78
McConnell, Dorothy	40, 61
McCorkindale, James	43
McCoy, Lura Mae	34
McDonald, Nancy	34, 67, 106
McEntaffer, Darrel	30, 58, 122
McNee, Marcia	15
Meents, Orgina	26, 86, 88
Men's Fraternities	70
Meshberger, Ruth	30
Mihos, Charles	43
Miller, Mendall B.	15
Mills, Mirah	15, 57, 63, 69
Minor, Harold	34, 37, 50, 59, 74, 78, 80, 86
Models	129
Moore, Dorothy	43
Morningsiders in Service	112, 113, 114, 115, 116, 122
Mu Phi Epsilon	81
Murray, Ethel	16
Music	71 thru' 82

#### N is for Notes—Little pieces of paper illegally used.

Neal, Enid	24, 78, 81
Nelson, Kathryn	40, 50, 129
Newsom, Johnny	96
Newsom, Mrs. Verley	16, 97
Nipher, Rolana	40, 74
Norris, Mary	24, 43
Northrup, Helen	28, 30, 50, 69

#### O is for Orderliness—Never found in a girl's purse.

Obrecht, Benjamin	41, 94
O'Dell, Virginia	43
Oliver, Orlene	40, 50, 74, 76, 78
Olsen, Aleda	41
Olson, Ruth E.	41
Olson, Ruth Marie	30
Organizations	45 thru' 70
Ono, Sam	43
Orner, Phyllis	30, 65, 78
Osbey, Jeanne	35, 69
Osbey, Winnifred	35, 69, 129
O'Shea, Shamos	43

#### P is for Pale—Color of a person after having seen his grade book.

Pappas, Bessie	41
Party-ing	137
Patch, Mrs. Marian	18
Patterson, Carol	58
Patterson, William	43
Paulin, Donna	40, 74
Pearey, Lona	40, 74
Pensis, Henri B.	16, 78
Pensis, Henri, Jr.	41, 50, 78
Pesile, Rocco	16, 25, 76, 78

Peterson, Betty	40, 50
Peterson, Doris	30, 52, 67
Peterson, Lloyd	26
Phi Sigma Iota	58
Pickering, Jean Rae	40, 50, 52
Pierson, Shirley	34, 67, 76, 78, 80, 81
Pin-Up Poses	136
Pitstick, Margaret	34, 50, 56, 61
Place, John	40
Polly, Betty	41
Poole, Donna	43
Pre-Engineers	59
Pride and Prejudice	86

#### Q is for Question—Is always asked and never answered by a teacher.

Quedensley, Joseph	43
--------------------	----

#### R is for Rare—Description of an A.

Radio	87, 88
Ralston, Margaret	30, 50, 52, 69, 74, 110
Raskin, Carolyn	43
Ray, Robert	88
Raun, Henry J.	18
Redenbaugh, Velma	40, 74
Rehabilitation	122
Rehnbom, Beverly	25, 48, 52, 69, 86, 87, 88, 111
Reistrup, James	16
Roadman, Earl A.	11
Roadman, Katherine	32, 34, 47, 52, 69, 74
Rorapaugh, Margaret	40, 61, 74
Runions, John	40
Runion, Lawrence	40, 86

#### S is for Shock—A feeling that creeps over one at the sight of an exceptionally good grade.

Sadler, Evelyn	40
Sander, William	43, 74, 122
Sargeant, Leone	21, 25, 52, 69
Sargisson, Barbara	40, 50
Sarmiento, Hugo	40, 55
Saupe, Ruth	35, 55, 58, 65
Scarborough, William J.	13, 58
Schenck, Earlene	18, 43, 56
Schmidt, Barbara	35, 67, 74, 76
Schossow, Lyle	40, 58
Schroeder, Laverne	40
Schultz, Marvyn	40, 83
Schultz, Mary Lou	35, 65
Seiber, Coila	30, 58
Severson, Donna	35, 69, 74, 96
Sheeler, Dorothy	35, 55, 56, 65, 76
Shepherd, Arline	35, 65, 74, 87
Shepard, Charline	35, 65, 74, 87
Shibuya, Yoshindo	40, 76
Shipton, Blake	43
Shreve, Betty	40, 50, 52
Sigma Tau Delta	57
Singer, David	18
Sioux Staff	50, 51
Sletwold, O. F.	18
Smith, Grace	16
Smith, Kathryn	35, 74
Snyder, Phyllis	40, 74
Specialties	138 thru' 143
Sodergren, Dorothy	40
Sport Snaps	135
Spotlight Changes	90
Springer, Lyla	25, 69, 105
Spring Festival	99
Stage Review	89
Stephens, Thomas	16
Strecker, Ruth	43, 89
Student Council	48, 49
Students	19 thru' 44
Suzuki, Tadao	40
Swanson, Edward	43

Sweet, Roy J.	18
Swenson, Mavis	41, 74
Symphony	78, 79

#### T is for Textbook—Thick, heavy, burdensome pages between two huge covers. Very allergic to dust

Tagg, Charlotte	30, 63, 65, 78, 80, 81
Tapley, Shirley	30, 74, 87
Teller, Ronald	41, 59
There Are No Little Things	88
Thompson, Vivienne	43
Tiemens, Melva	21, 25, 60, 63, 67, 98
Timm, Mrs. Jeanne	16
Together	131
Tolf, Alva	13, 56, 63
Travaille, Bernard	25, 58, 86, 88
Travis, Helen	35, 86
Trieber, Jean	41
Trosper, Harriet	41
Tronsrue, Joyce	41, 74, 87
Turk, Wayne	41
Twieto, Thomas E.	16, 50, 103

#### V is for Vigor—Used only after school.

Vander Berg, Elmer	25
Vande Brake, Phyllis	25, 56, 63, 67
Van Horne, Robert N.	17
Veterans	122
Voigt, Raeburn	35, 50, 52, 65

#### W is for Warning—A dreaded word used just before the fatal time—usually too late.

Walker, Evelyn	35, 57, 74, 76
Walker, Helen Lorraine	41
Walter, Eleanore	41
Wansink, John	43, 94
Warnholtz, Marylou	43
Weatherby, Mary Margaret	26, 50, 58, 86
Weaver, Donald	35, 59
Wedding Belles	130
Westergaard, Ellen	26, 47, 48, 50, 52, 56, 63, 67, 74, 78, 96, 98, 104, 111
Weyer, Eileen	35, 74, 76, 78
White, Lois	26, 50
Who's Who	110, 111
Wikstrom, Thomas	30, 50, 74, 78, 80, 86, 88, 94
Wilken, Florence	30, 74, 76, 78, 81
Wilkerson, Gordon	41
Williams, Lela	35, 67
Williams, Mary	41
Wilson, Patricia	35, 52, 67, 86, 109
Wise, Charles	41, 59, 122
Wolle, Carolyn	41, 61, 74
Wolle, William	43, 94
Women's Athletic Association	98
Women's Self-Governing Association	56
Wood, Mary	30, 52, 69, 86, 109
Woodford, Audentia	41
Woodford, Faith F.	17, 81
Woods, Eilene	41, 74, 76, 87
Woods, Elaine	41, 74, 76, 87
Woodson, John L.	18
Wright, Barbara	41, 47, 61, 86, 88
Wright, Richard	43

#### Y is for Yawn—The only reason the mouth is opened during a class.

Yates, Stella D.	17, 55, 63, 65
Young, Barbara	35, 69, 87
Young, Doris	35, 50, 52
Young Man's Christian Association	54, 55
Young Women's Christian Association	54, 55

#### Z is for Zeal—Something the College "student" seldom has.

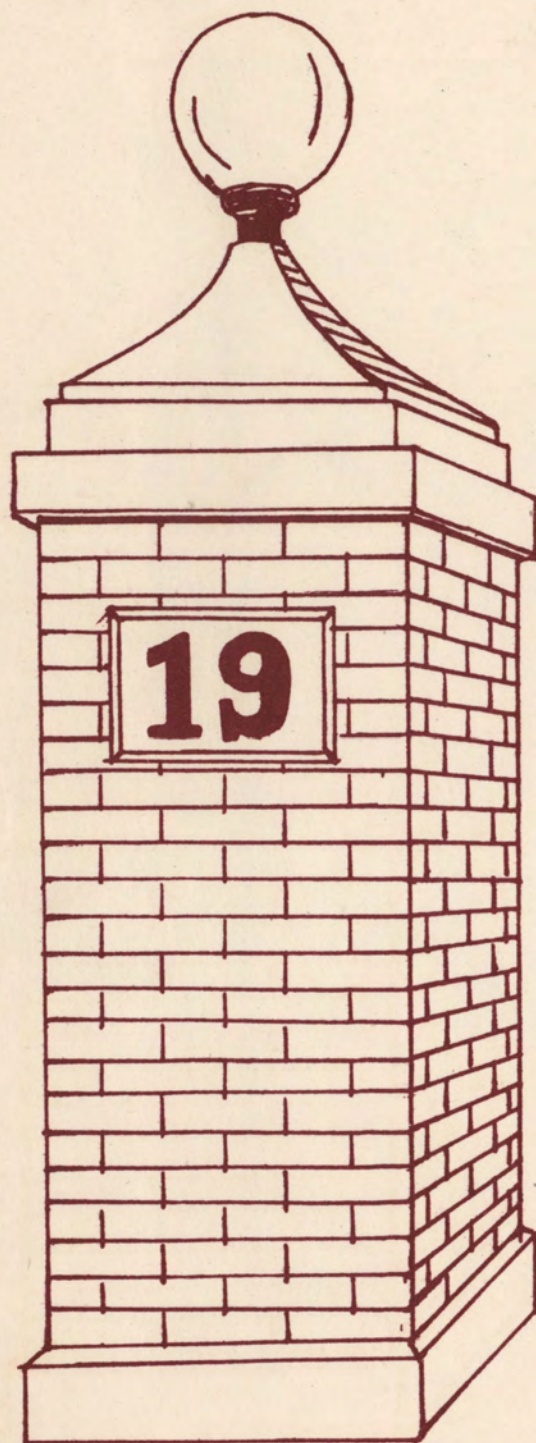
Zeman, Paul	35, 55, 58, 86, 87, 94, 106
Ziemer, Robert	43
Zuparn, Marian	43



SNAPS







The End

