


1939

LIQUOR

378.7774
M8285
1939

Library



Accession 43621
 R
 Class 378.7774
 M828s
 Book [v.40]1939



Morningside College Library



511 0040376 8



AT RESERVE DESK

378.7774 43621
 M828s Morningside College
 1939 The Sioux

Auto

AT RESERVE DESK

378.7774 43621
 M828s Morningside College
 1939 The Sioux

DATE DUE

| | | | |
|------------------------|--|--|--|
| JUL 21 1991 | | | |
| MAY 31 2003 | | | |
| DEC 10 2003 | | | |
| | | | |
| | | | |
| | | | |
| | | | |
| | | | |
| | | | |
| | | | |
| | | | |
| | | | |
| | | | |
| | | | |
| | | | |
| | | | |
| | | | |
| | | | |
| | | | |
| | | | |
| | | | |
| | | | |

DEMCO 38-297

Morningside College
Presents

The **SIoux** 1939

Morningside College

L.V. 4D3

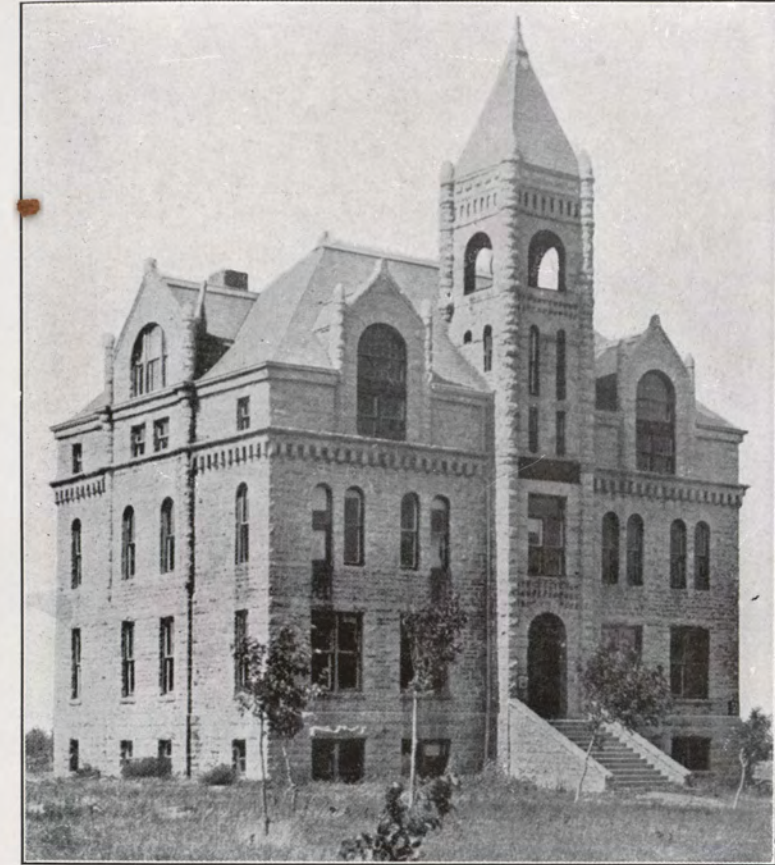
DOROTHY ANN OLSON *Editor*
LESTER MENKE *Business Manager*
J. M. SAUNDERSON *Faculty Advisor*

R
378.7774
M 828
1939

N I N E T E

E N · T H I R T Y · N I N E

Foreword



—First Building on the Campus.

The twenty-one thousand students who have enrolled at Morningside College since its institution as the University of the Northwest in 1889, salute it on this—its golden anniversary. May this book, published during Morningside's fiftieth year, bring back delightful memories of their own college days to those who are no longer in school, and serve as a record of never-to-be-forgotten experiences to the students of 1939.

43621



—Campus Close-up.

T H E · S I O U X

N I N E T E

E N · T H I R T Y · N I N E



To

IRA JAMES GWINN

whose understanding friendliness has
been an everpresent help and
guide to every student.

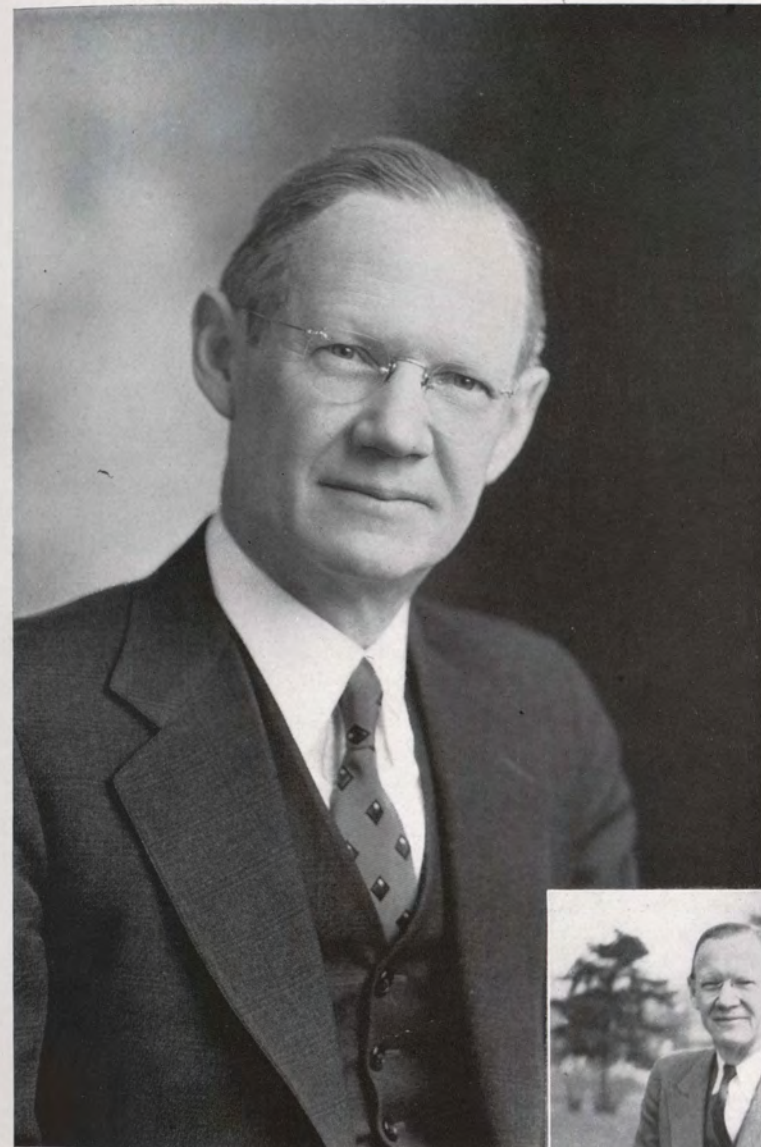
T
H
E
·
S
I
O

U
X



—*Campus Canopy.*

President Earl Alan Roadman



—*“For he’s a jolly good fellow.”*

B.D., D.D., LL.D.

Iowa State Teachers College, Upper Iowa
University, Boston University Graduate
School, University of Halle, Germany.

Staff



—Journal Photo.

- | | |
|----------------------------|---------------------------|
| ASSOCIATE EDITOR..... | Mildred Wikert |
| LITERARY EDITOR..... | Dorothy Nelson |
| LITERARY ASSISTANT..... | Clara Louise McBurney |
| SENIOR EDITOR..... | Margaret Lundquist |
| JUNIOR EDITOR..... | Margaret Long |
| MEN'S SPORTS EDITOR..... | Keene Roadman |
| WOMEN'S SPORTS EDITOR..... | Lillian Brown |
| PHOTOGRAPHY EDITOR..... | Irene Johnson |
| SNAPSHOT EDITOR..... | Bonnie Jean Wallen |
| MUSIC EDITOR..... | Jean Anderson |
| FORENSICS EDITOR..... | Ruth Olsen |
| DRAMATICS EDITOR..... | Dale Harter |
| ARTIST | Donovan Leopold |
| PHOTOGRAPHERS..... | Bob Swift, Russell Martin |
| TYPIST | Bernice Petronis |

N I N E T E

E N · T H I R T Y · N I N E

In Memoriam



DR. J. J. BUSHNELL

In the death of Dr. J. J. Bushnell, Morningside College has lost a great man; great because he risked everything that he might do for others. Though he knew that death might come at any moment, he gave himself to the thorough study of books, asking as did Browning's grammarian, "What's in the scroll thou keepest furled? Let me know all." Books and people were his life, his great desire being to know, and to bring his students to know the high, not the low, not the night, but the morning.

—A Faculty Member.

Under Morningside's last three presidents one professor more than any other firmly established himself, through his jovial disposition and shining integrity in the hearts of his students. To him they freely turned for the sympathetic counsel which it was his deepest joy to bestow, and to Dr. Bushnell's memory they will turn many times again for comfort and inspiration.

—A Student.

T H E · S I

O U X



—*Campus Conclave.*



FACULTY and STUDENTS

Board of Trustees

OFFICERS

R. J. HARRINGTON, Sioux City.....*President*
C. L. BARKS, Orange City.....*Vice-President*
T. N. McCLURE, Sioux City.....*Secretary-Treasurer*

EMERITI

J. G. SHUMAKER, Alamo, Texas

HONORARY

J. N. Hughes, Des Moines, Iowa
J. C. Rasmussen, Spencer, Iowa
C. C. Harshbarger, Onawa, Iowa
Mrs. C. R. Long, Sioux City
A. M. Jackson, Sioux City

ACTIVE

TERMS EXPIRE 1939

O. M. Bond, Sioux City
R. J. Harrington, Sioux City
C. H. Kingsbury, Ponca, Nebraska
John Kolp, Manson, Iowa
W. H. Lease, Rolfe, Iowa
Howard Martin, Sioux City
Harry Pratt, Sioux City

TERMS EXPIRE 1940

C. W. Britton, Sioux City
J. J. Davies, Fort Dodge, Iowa
G. W. Dunn, Sioux City
L. W. Feik, Sioux City
Gordon Metcalf, Sioux City
Rueben Roach, Sioux City
A. L. Semans, Spencer, Iowa
J. R. Tumbleson, Eagle Grove, Iowa

TERMS EXPIRE 1941

C. L. Barks, Orange City, Iowa
F. Earl Burgess, Algona, Iowa
J. C. Buthman, Algona, Iowa
H. I. Down, Sioux City
J. A. Farnham, Cherokee, Iowa
J. V. Madison, Sioux City
Carrol N. Smith, Sioux City
D. W. Stewart, Sioux City



Faculty

PAUL EMANUEL JOHNSON

*Dean of the College and
Professor of Philosophy*

A.B., Cornell College, 1920; A.M., University of Chicago, 1921; S.T.B., Boston University, 1923; Graduate Fellow in Philosophy, Boston University, 1923-4; Graduate Assistant in Philosophy, Brown University, 1924-5; Graduate Studies, Harvard University, 1925, 1927-8; Ph.D., Boston University, 1928.



**LILLIAN ENGLISH
DIMMITT**

*Dean of Women and
Professor of Ancient
Languages*

A.B., Illinois Wesleyan University, 1888; A.M., Columbia University, 1913; L.H.D., Illinois Wesleyan University, 1920; Graduate Student, University of Chicago, summer quarters, 1894 and 1897; Student in the American School of Classical Studies, Rome, 1903-4; Graduate Student, Columbia University, 1912-3; University of Chicago, summer, 1918.



MYRON EARLE GRABER

Dean of Men and Professor of Physics

A.B., Heidelberg University, 1901; A.M., ibid., 1904; Ph.D., University of Iowa, 1924; Graduate Student, University of Michigan, summer, 1907; Columbia University, 1908; Ohio State University, 1913; Fellow in Physics, University of Chicago, 1917-8; Fellow in Physics, University of Iowa, 1923-4.

CLARA L. ASMUS
Mus. B.
Instructor in Pianoforte
Morningside College, Chicago
Musical College.

LYNN BEYER
A.B.
*Assistant Professor of
English*
Hamline University, Oxford
University, London University,
University of Wisconsin.



LOIS JESSIE BRINKMAN
B.S.
*Instructor in Physical
Education for Women*
Battle Creek College, Profes-
sional Physical Education
Camp.

JOHN J. BUSHNELL
D.D., Ph.D., S.T.B.
*Professor of Philosophy
and Religion*
Boston University, School of
Theology, Epworth Seminary,
Upper Iowa University.



THOMAS CANNING
Mus. B.
*Instructor in Theory and
Organ*
Oberlin College.

HAZEL CARTER
B.S., A.M.
*Instructor in Public School
Music and in Pianoforte*
Missouri State Teachers College,
Columbia University.



JAMES AUSTIN COSS
B.S., M.S.
Professor of Chemistry
Illinois Wesleyan University,
University of Illinois, Univer-
sity of Chicago, Clark
University.

EARLE E. EMME
A.B., D.B., A.M., Ph.D.
Professor of Psychology
Northwestern University, Gar-
rett Biblical Institute, Colum-
bia University, Boston Univer-
sity, University of Chicago.



LAURA CLARA FISCHER
A.B., A.M.
*Assistant Professor of
Ancient Languages and
German*
Carleton College, University of
Chicago, University of Colo-
rado, University of Wisconsin.

IRA JAMES GWINN
A.B., M.S.
*Assistant Professor of
Physics*
Morningside College, University
of Iowa.





HORACE B. HAWTHORN
B.S., M.S., Ph.D.
Professor of Sociology
Iowa State College, University of Wisconsin.

BIRDINA HILL
Mus. B.
Instructor in Violin
Cleveland Institute of Music, Pupil of Louis Persinger, Josef Fuchs, Herbert Elwell, Juilliard School of Music.



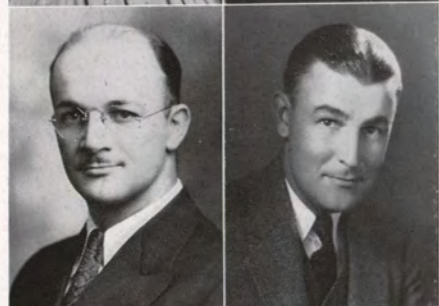
MARIAN HOWE
B.S.
Instructor in Commercial
Iowa State College, Ames Business College, Gregg College, Chicago.

HENRY F. KANTHLENER
A.B., A.M.
Professor of Romance Languages
Cornell College, Harvard University, Institut Francais and University of Madrid, University of Chicago, University of Dijon, National University of Mexico.



KATHERINE KAULL KINNEY
Mus. B.
Instructor in Pianoforte
University of Kansas, Eastman School of Music, Student of Lawrence Schaufler, Fredonia State Normal, New York.

GORDON J. KINNEY
Mus. B.
Instructor in Violoncello and Double Bass
Maas School of Music, Eastman School of Music, Student of Karl Agnesy, Nelson Watson.



JAMES E. KIRKPATRICK
A.B., A.M., Ph.D.
Professor of Education
Cornell College, University of Iowa.

EUGENE H. KLEINPELL
A.B., A.M., Ph.D.
Professor of History and Political Science
University of Iowa, University of Chicago, Ohio State University.



ETHEL THOMPSON KUCINSKI
Mus. B.
Instructor in Pianoforte
Morningside College, Eastman School of Music, Chicago Musical College, Cleveland Institute, Juilliard School of Music, Student of Rudolph Ganz, Raymond Wilson, Arthur Loesser, James Friskin.

LEO KUCINSKI
Mus. B.
Head of Violin Department
Morningside College, Warsaw Conservatory of Music, Oberlin Conservatory of Music, Cleveland Institute of Music, Juilliard Graduate School of Music, Pupil of Edward Izbickowski, Charlotte Demuth Williams, De Ribaupierre, Albert Stoessel, Rubin Goldmark, Naoum Blinder.

HELEN I. LOVELAND
A.B.
Professor Emeritus of English
Smith College, Oxford University.

ELIZABETH NEWTON MACCOLLIN
Mus. B.
Instructor in Voice
Oberlin Conservatory of Music, Lake Geneva, Student of L. A. Torrens.

PAUL MACCOLLIN
A.B., Mus. B.
Director of the Conservatory of Music and Professor of Voice
Oberlin College, Morningside College, Oberlin Conservatory of Music, Lake Geneva, Pupil of Dr. Carl Dufft, Ellison Van Hoose.

MARCIA MCNEE
A.B.
Instructor in Elementary Education
Upper Iowa University, University of Chicago, University of Iowa, University of Minnesota.

EDWARD A. METZ
Mus. B.
Instructor in Pianoforte
Chicago Musical College, Boguslawski College of Music, Curtis Institute, Pupil of Tomford Harris, Ernest Hutcheson, Austin Conradi.

MENDAL B. MILLER
A.B., A.M.
Assistant Professor of Economics and Sociology
Greenville College, University of Southern California.

MIRAH MILLS
A.B., A.M.
Professor of English and Secretary of the Faculty
Morningside College, University of Chicago, University of Michigan, University of Southern California.

ETHEL RUTH MURRAY
A.B., A.M.
Registrar and Assistant Professor of Ancient Languages and History
Morningside College, University of Illinois, Columbia University.

JAMES REISTRUP
Mus. B.
Head of Pianoforte Department
Morningside College, Pupil of Emma Sage, J. Erick Schmall, Theo. Otterstrom, Rudolph Ganz, Fritz Voegelé, Cecil Burleigh.

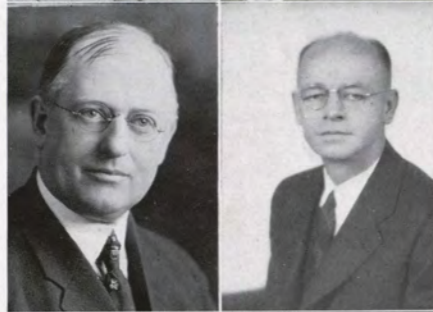
ROBERT GLEN ROGERS
A.B.
Instructor in Physical Education and Assistant Athletic Director
Morningside College, University of Illinois.





JASON M. SAUNDERSON
A.B.
Professor of Physical Education and Director of Athletics
Albion College.

SAMUEL C. STEINBRENNER
A.B., A.M.
Professor of German
Charles City College, Theological Seminary, Frankfurt-on-Main, Germany, University of Strassburg, University of Chicago.



THOMAS C. STEPHENS
A.B., M.D.
Professor of Biology
Adrian College, University of Chicago, Kansas State University, Kansas City University, Marine Biological Laboratory, University of Iowa, University of Michigan.

JOHN WILSON STEWART
B.A., M.A.
Professor of Economics
Geneva College, Montana State University, University of Iowa, University of Illinois, University of Washington.



LAURA TASCHE
B.S.
Instructor in Commercial
University of South Dakota, Spearfish Normal, Aberdeen Normal, Fort Wayne Business Institute.

EVERETT TIMM
Mus. B.
Head of Wind Instruments Department
Morningside College, Juilliard School of Music, Eastman School of Music, Pupil of Donald Lentz, George Carlson, Georges Barre, Arthur Lora, Daniel Groth, Donald Schmid, Chautauqua Summer School.



ROBERT N. VAN HORNE
Ph.B.
Professor of Mathematics
Morningside College, Johns Hopkins University, University of Chicago.

LOIS M. VANDENBRINK
A.B.
Assistant in Biology
Morningside College.



MILTON WIKSELL
A.B., A.M.
Instructor in Speech and Dramatics
Wayne State Teachers College, University of Missouri, University of Iowa, Louisiana State University.

FAITH F. WOODFORD
A.B., Mus. B.
Instructor in Pianoforte, History of Music, and English
Morningside College, Berlin Conservatory of Music, University of Michigan, Pupil of Emil Liebling, Alberto Jones, Clarence Eddy, John Doane, Olaf Anderson, Howard Wells, Palmer Christian.

T. N. McCLURE
Bursar
Vincennes University, University of Chicago.

JOHN MOOK
A.B.
Director of Admissions
Ball State Teachers College, Indiana, University of Chicago.

MRS. MAE MACARTHUR
Bookkeeper
Western Union College, National Business Training School.

ALICE MATTICE
A.B.
Secretary to the President
Morningside College.

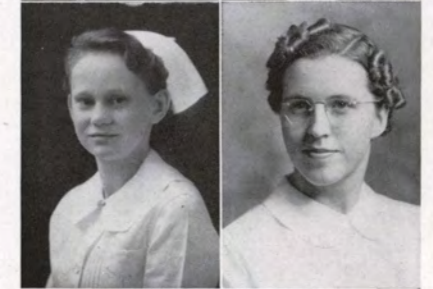
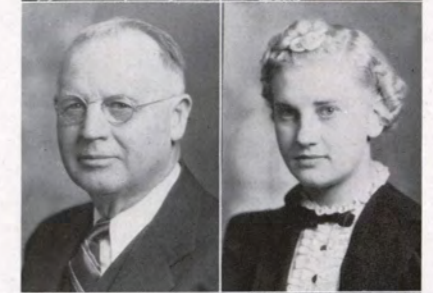
ROY J. SWEET
Field Representative

LILLIAN AKESON
Secretary to the Bursar
National Business Training School.

HELEN JENSEN
R.N.
Dormitory Nurse
Sioux Valley Hospital, Sioux Falls.

LILLIAN MORGAN
B.S.
Manager of Women's Residence Halls
Iowa State College.

ILA BUNCH
Cashier
Morningside College.



Health Office



Under the watchful eye of Dr. C. F. Berkstresser, the students have been kept in excellent physical condition throughout the year. Daily office hours were kept by "Doc" and Nurse Inez Grove in the Health Office which is now in its second year of existence.

Free medical attention is available to all students in need of it; voluntary Wasserman tests were given this year and all examinations for the Health King and Queen were done in the Health Office.



Class of 1939



OFFICERS

PresidentDavid Brinkman
 Vice-PresidentTed Barnowe
 SecretaryVirginia Thomas
 RepresentativeMargaret Lundquist



DORIS ALEXANDER
Redfield, South Dakota
Liberal Arts

Kappa Zeta Chi, Librarian, 3, Directress, 4; Sigma Tau Delta, 3, 4, Secretary-Treasurer, 4; Chapel Choir, 1, 2, 3, 4; W. S. G. A., Hall President, 4.

WILLIE BELLE ALEXANDER
Sioux City
Liberal Arts

Cosmopolitan Club, 1, 2, 3, 4, Secretary, 2, Treasurer, 1; Dramatics, 1, 2, 3, 4; M. C. A., 1, 2.

IRENE ANDERSON
Linn Grove, Iowa
Liberal Arts

Alpha Sigma; Cosmopolitan Club, 2, 3, 4, President, 4; M. C. A., 1, 2, 3, 4, Secretary, 4; Grace League, 1, 2, 3, 4; Ishkoodah, Vice President, 1.

DOROTHY ARNOLD
Lake Park, Iowa
Music

Alpha Sigma, Historian, 2, Corresponding Secretary, 3; Choir, 2, 3, 4; M. C. A.; Cooperative House President, 4.

MYRLE AUSTIN
Rockford, Illinois
Music

Chapel Choir, 2, 3, 4.

FLETA MAE BANE
Kanawha, Iowa
Liberal Arts

Central State Teachers College, 1; Parsons Junior College, 2; Kansas State Teachers College, 3.

TED BARNOWE
Sioux City
Liberal Arts

Pre-Engineer's Club, Treasurer, 2, Vice President, 3, President, 4; Sigma Pi Sigma, Vice President, 3, President, 4; Vice President, Senior Class.

DOROTHY BEHRENS
Whiting, Iowa
Music

Kappa Zeta Chi; Sigma Mu, Treasurer, 3; Mu Phi Epsilon, Historian, 4; Chapel Choir, 1, 2, 3, 4; Student Council, 4; W. S. G. A., President, 4; Who's Who, 4.

NORMAN BRADY
Sanborn, Iowa
Business Administration

Dakota Wesleyan, 1, 2; Morningside, 3, 4; Pre-Engineers Club; Aviation Club.

RALPH BRAKKE
Norfolk, Nebraska
Business Administration

Sioux Club, 1; Pi Gamma Mu, 4; Intramural Basketball, 1, 2, 3, 4; Intramural Kittenball, 1, 2, 3, 4; Track, 1.

MARY BRILMAN
Primghar, Iowa
Music

Kappa Zeta Chi; Mu Phi Epsilon; Vesper Choir, 1, 2, 3, 4; Band, 1, 3; M. C. A.; Cooperative House Vice President, 4.

DAVID BRINKMAN
Rolfe, Iowa
Business Administration

Alpha Tau Delta, Vice President, 3, President, 4; "M" Club, 3, 4; Football; President Senior Class; Student Council, 4.

LILLIAN BROWN
Hinton, Iowa
Liberal Arts

Kappa Zeta Chi; Psychology Club, 4; Band, 1, 3; W. A. A., 1, 2, 3, 4, Board, 2, 3, 4; Honorary Hockey, 2, 3, 4; Honorary Kitten-ball; Sweater Winner; Scarf Winner; Sioux, 4; M. C. A., 1, 2, 3, 4; Cheer Leader, 4.

STANLEY BRUNTJEN
Sioux City
Liberal Arts

Pre-Engineer's Club, Secretary, 2, Vice President, 4, President, 4; Sigma Pi Sigma, President, 3; Track, 1, 3, 4.

BORDEN BUCHANAN
Sioux City
Liberal Arts

Alpha Tau Delta; Biology Club; Aeronautics Club, Assistant Commanding Officer; Beta Beta Beta; Intramural Basketball; Tri Beta, President.

ALBERT BUCKINGHAM
Palo Alto, California
Liberal Arts

Phi Sigma, Treasurer, 4; Basketball, 2, 3, 4; Football, 2, 3, 4; "M" Club, 2, 3, 4; President of Student Council, 4.

AGNES CARLIN
Sioux City
Liberal Arts

Alpha Sigma, Historian, 2, President, 3, Recording Secretary, 4, Usher, 4; Psychology Club, 4; Sigma Tau Delta, 4; Pi Gamma Mu, 4; Alpha Kappa Delta, 4; M. C. A., 2, 3; Inter-Sorority Council, 3.

BERTHA CONNER
Glidden, Iowa
Music

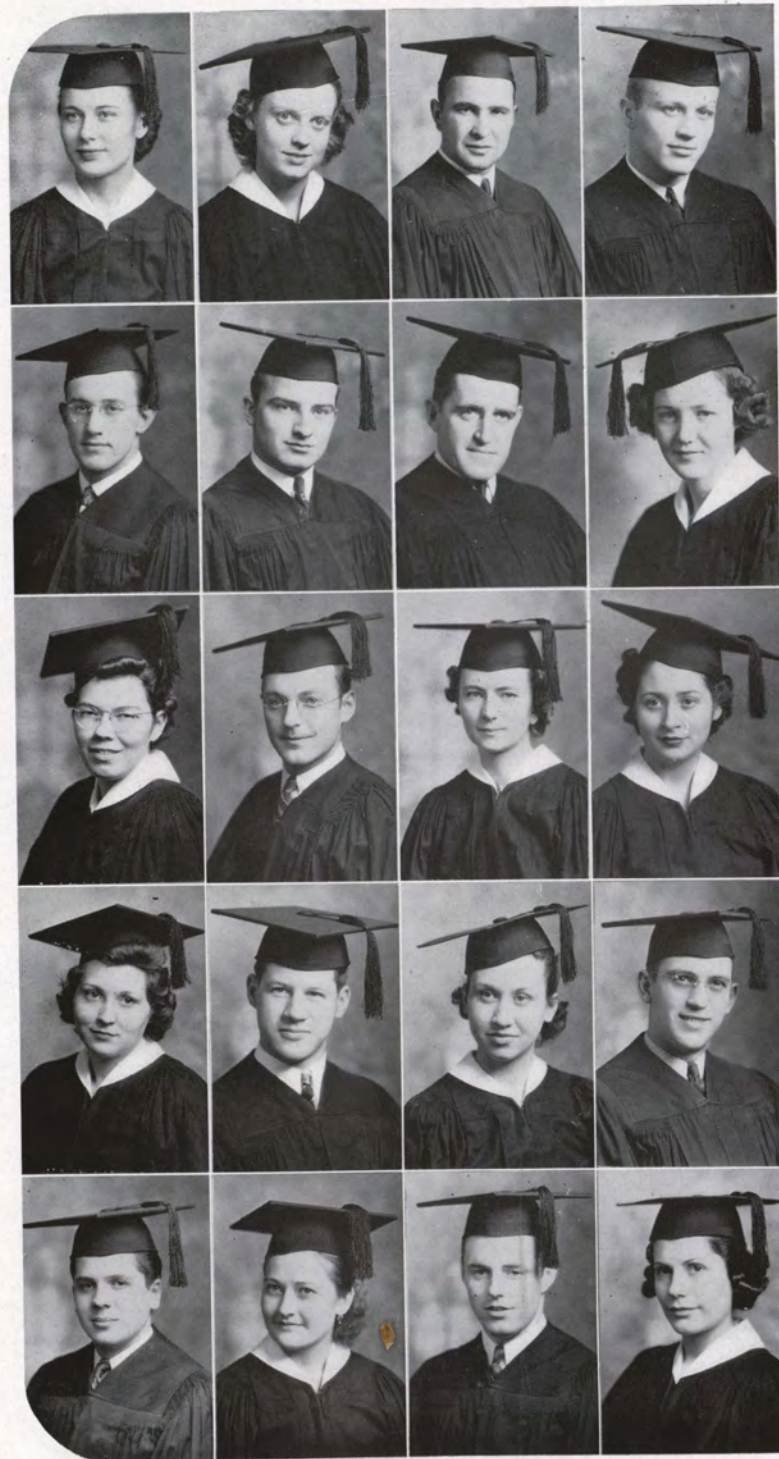
Alpha Sigma, Pianist, 2, Recording Secretary, 3, Vice President, 4; Sigma Mu, President, 3; Mu Phi Epsilon, Corresponding Secretary, 4; Vesper Choir, 3, 4; M. C. A., Chairman of M. C. A. Radio Broadcast, 4; Student Council, 4; Conservatory President, 4.

MIRIAM CORKHILL
Sioux City
Liberal Arts

Kappa Zeta Chi, 1, 2; Collegiate Players; Phi Sigma Iota, Vice President, 2, President, 3, Secretary, 4.

VIRGINIA CRANE
Battle Creek, Iowa
Music

Kappa Zeta Chi, Directress, 3, 4; Mu Phi Epsilon, Vice President, 3, President, 4; Sigma Mu, 2, 3, 4, Social Chairman, 2; Chapel Choir, 1, 2, 3, 4; Band, 1, 2; K. Z. X. Trio, 2, 3; W. S. G. A., Vice President, 4; Messiah Contralto Soloist, 4.



DORIS DAVIS
Sioux City
Liberal Arts
Collegiate Players, 3; Chapel Choir, 1, 2, 3, 4.

JAKE FELKER
Trenton, Nebraska
Liberal Arts
"M" Club, 3, 4; Football, 1, 2, 3, 4.

VIRGINIA GASINK
Sioux City
Music
Collegiate Players, 1, 2, 3, 4; Cosmopolitan Club, 3, 4; International Relations Club, 3, 4; Symphony Orchestra, 1, 2, 3, 4; String Quartet, 1, 2, 3, 4; Vesper Choir, 2, 3, 4; String Trio, 1, 2, 3, 4; M. C. A., 1, 2, 3, 4; Grace League, 3, 4.

HAZEL HELD
Hinton, Iowa
Liberal Arts
Kappa Zeta Chi, Directress, 2; Recording Secretary, 4; Psychology Club, 4; Vesper Choir, 1, 2.

EDWARD JACOBSON
Sioux City
Liberal Arts

EVELYN DEPUE
Mapleton, Iowa
Liberal Arts
Kappa Pi Alpha, President, 4; Collegiate Players, 1, 2; Psychology Club, 3, 4; Chapel Choir, 1, 2, 3; Vice President, Sophomore Class; Christian Service Club Radio Quartet, 1; Ishkoodah, Sergeant-at-Arms, 1; May Queen Attendant; Beauty Queen, 4.

DALE FLINDERS
Sutherland, Iowa
Liberal Arts
"M" Club, 2, 3, 4; Sigma Pi Sigma, 3, 4; Secretary-Treasurer, 4; Choir, 2, 3, 4; Male Quartet, 4; M. C. A. Radio Quartet, 2, 3, 4; Football, 1, 2, 3, 4; Track, 1, 2; Who's Who, 4; Health King Attendant, 3; Health King, 4.

EUGENE HARTLEY
Battle Creek, Iowa
Liberal Arts
University of Iowa, 2, 3; Biology Club, 4; Band, 1, 4.

FRED HOFFMAN
Minneapolis, Minnesota
Business Administration
Hibbing Junior College, 1, 2; Football, 3, 4; Kittenball; Track, 3, 4.

ANNA MAY KLINKER
Denison, Iowa
Liberal Arts
Francis Shimer College; Cosmopolitan Club, 4; Chapel Choir, 4.

THOMAS DOWN
Odebolt, Iowa
Business Administration
Alpha Tau Delta, Sergeant-at-Arms, 4; Football, 1; Basketball, 1.

RICHARD FORBES
Keosauqua, Iowa
Music
Alpha Tau Delta; Chapel Choir, 1, 2, 3, 4; Dramatics.

MIRIAM HAWTHORN
Castana, Iowa
Liberal Arts

Alpha Sigma, Chaplain, 2, 3, President, 4; Manuscript Club, Librarian, 4; Editor of "Manuscript", 4; Sociology Club, 2; International Relations Club, Vice President, 2; Alpha Kappa Delta, Secretary, 3, President, 4; Sigma Tau Delta, President, 4; Intramural, 1, 2, 3, 4; Yale-Harvard, 3; Scarf Winner, 3; Sweater Winner, 3; Collegian Reporter, 1; M. C. A., 1, 2, 3, 4; Social Service Chairman, 2; Secretary 3, Y. W. Representative, 4; Grace League, 1, 2, 3, 4; Cabinet, 2, 3, 4; Inter-Sorority Council, 4; W. A. A. Board, 3, 4.

JEAN HOSNER
Des Moines, Iowa
Business Administration
Alpha Sigma, Vice President, 3; Corresponding Secretary, 4; Psychology Club, 4; Pep Club, 3; Agora, Junior Representative; Collegian Reporter; M. C. A., 2, 3.

RUSSELL KRAAI
Orange City, Iowa
Liberal Arts
Northwestern Junior College, 1, 2; Phi Sigma, President, 4; "M" Club, 3, 4; Football, 3, 4; Basketball, 3, 4; Kittenball, 3, 4; Track, 3, 4.

OWEN ENGFN
Minneapolis, Minnesota
Business Administration
Hibbing Junior College, 1, 2; "M" Club, 3, 4; Football, 3, 4; Kittenball, 3, 4.

BARBARA FORRESTER
Sioux City
Liberal Arts
Kappa Zeta Chi, Usher, 2, 4; Pep Club, 2; Biology Club, 2; International Relations Club, 2; Beta Beta Beta, 4; W. A. A., 1, 2, 4; Basketball Chairman, 4; Awards Chairman, 2; Yale-Harvard, 1, 2, 4; Scarf Winner, 2; Sweater Winner, 4; Honorary Hockey, Volleyball, and Basketball Teams, 1, 2, 4; M. C. A., 1, 2, 4.

CAROL HELD
Hinton, Iowa
Music
Kappa Zeta Chi, Directress, 3; Critic, 4; President, 4; Pep Club, 3; Sigma Mu, 3; Chapel Choir, 1, 2, 3, 4; Band, 1; Health Queen, 2; Student Body Secretary-Treasurer, 4; Beauty Queen, 4.

WILLIAM HUGHES
Sioux City
Business Administration
Alpha Tau Delta, Sergeant-at-Arms, 2; Vice President, 4; Economics Club, 2, 3; Cheer Leader, 3; Editor of Alumni Bulletin, 4.

BARBARA LEWTON
Sioux City
Music
Kappa Zeta Chi, Corresponding Secretary, 4; Inter-Sorority Council, 2; Critic, 4; Chapel Choir, 1, 2, 3, 4; Vocal Trio, 1, 2, 3; Madrigals, 3; Song Leader, 3.



NADINE LINDQUIST
Spirit Lake, Iowa
Music

Kappa Zeta Chi; Mu Phi Epsilon, 3, 4; Warden, 3; Treasurer, 4; Sigma Mu, 2; Chapel Choir, 1, 2, 3, 4; Band, 1, 2; Contralto Soloist in "Messiah", 3; Solos in "Rose Maiden", 1.

MARGARET LUNDQUIST
Sioux City
Liberal Arts

Kappa Zeta Chi, Corresponding Secretary, 3, Treasurer, 4; Pi Gamma Mu, 4; Junior Class, Treasurer; Senior Class Representative; Senior Editor, Junior Editor, "Sioux"; Grace League, 2; Student Council, 4.

CLARA LOUISE MCBURNEY
Sioux City
Liberal Arts

Alpha Sigma, Chaplain, 3, Reporter, 4; Art Club, 2; German Club, Musician, 1, Vice President, 2; Mu Phi Epsilon, Historian, 4, Recording Secretary, 4; Sigma Mu, 2, 3; Pi Gamma Mu; Symphony Orchestra, 1, 2, 3, 4; Collegian Reporter, 1, 4; Assistant Literary Editor, "Sioux", 4; M. C. A., 2, 3, 4; Inter-Sorority Council.

PAUL MCKENNA
Sioux City
Liberal Arts
M. C. A., 3, 4.

FRANCIS MCLAUGHLIN
Sioux City
Liberal Arts

Pre-Engineer's Club; Band; Brass Quartet; Trumpet Trio; Acrobatic Team.

HERBERT MCQUEEN
Kingsley, Iowa
Liberal Arts

H. G. MORRISON
Peterson, Iowa
Liberal Arts

Alpha Tau Delta, Secretary, 3, Sergeant-at-Arms, 2, President, 4; Inter-Fraternity Council, 4; Economics Club, 2; "M" Club, 3, 4, Secretary, 4; Football, 1, 2, 3, 4; Basketball, 1, 3, 4; Intramural Basketball, 2, 3; Intramural Kittenball, 1, 2, 3, 4; Junior Class President; Student Council 3; Sports Editor, "Sioux", 2; Grace League, 1, 2, 3, Cabinet, 2; M. C. A., 1, 2.

JOSEPH NARYKA
Sioux City
Liberal Arts

Biology Club, 2, 3, 4; Psychology Club, 4; Beta Beta Beta, 4.

DOROTHY NELSON
Sioux City
Liberal Arts

Kappa Zeta Chi; German Club, 2; W. A. A., 2, 3, 4, Vice President, 4; Intramural Hockey, 2, 3; Snapshot Editor, 3, Literary Editor, 4, "Sioux"; M. C. A., 2, 3; Grace League, 1; Art Club, 2.

RICHARD PAWSON
Delavan, Illinois
Liberal Arts

Biology Club, 1, 2; Psychology Club, 3, 4.

HELEN PEARSON
Cleghorn, Iowa
Music

Kappa Zeta Chi; Mu Phi Epsilon, Vice President, 4; Sigma Mu; Chapel Choir, 1, 2, 3, 4; W. S. G. A., Hall President, 4.

BERNICE PETRONIS
Sioux City
Liberal Arts

Alpha Sigma, Treasurer, 3, 4, President, 4; Psychology Club, 4, Secretary, 4; Economics Club, 2; Eta Sigma Phi, 3, 4, Secretary, 4; Pi Gamma Mu, 4; Alpha Kappa Delta, 4; Intramural Basketball, 2, 3, 4, Volleyball, 2, 3, 4, Hockey, 4; Typist, "Sioux", 4; M. C. A., 1, 2; Agora, Senior Representative.

MARJORIE PRIMMER
Sioux City
Liberal Arts

Kappa Zeta Chi, Treasurer, 3, President, 4, Inter-Sorority Council, 3, 4; Pep Club; Ishkoodah President, 1; Chapel Choir, 2, 3, 4, Vice President, 4; Junior Class Representative; Agora, President, 4, Vice President, 3; Health Queen, 3; "Yumph Girl", 3; Miss Morningside, 4; Student Council, 3, 4.

MARJORIE PRITCHARD
Sioux City
Music

Kappa Zeta Chi; Vesper Choir, President; Symphony Orchestra; Student String Quartet.

KEENE ROADMAN
Sioux City
Liberal Arts

Economics Club; Collegiate Players, 2, 3; Pi Kappa Delta; Alpha Psi Omega; Student Body Vice President, 4; Collegian Reporter; Sports Editor, "Sioux", 3, 4; M. C. A.

DALE ROGERS
Marathon, Iowa
Liberal Arts

Alpha Tau Delta, Treasurer, 4, President, 4; Biology Club, 2; Junior Class Vice President.

ROBERT ROHWER
Paullina, Iowa
Liberal Arts

Cosmopolitan Club, 4; Economics Club, 2; Pi Kappa Delta, 2, 3, 4, President, 4; Pi Gamma Mu; Chapel Choir, 1, 2, 3, 4, President, 4; Student Council, 2, 3, 4; M. C. A., 1, 2, 3, 4, President, 3; Class Scholarship, 1; Board of Control, 1, 2, 3, 4; Inter-Collegiate Debate, 2, 3, 4.

HENRY SCHUNCK
Sioux City
Business Administration
Chapel Choir, 1, 2.

ALBERTA SEAVEY
Aurora, Illinois
Liberal Arts

Kappa Zeta Chi, Usher, 2; Collegiate Players, 1, 2; W. A. A., 1, 2, 4, Board Member, 2; W. S. G. A., Hall President, 4; Intramural Sports, 1, 2, 4; Yale-Harvard, 1, 2, 4; Sweater Winner, 4; Scarf Winner, 2; Collegian Reporter, 1, 2; "Sioux", 2; M. C. A., 1, 2, 4; Grace League, 1, 2.

CHARELS SEWARD
Forest City, Iowa
Liberal Arts

Sigma Theta Rho, 2, 3, Chaplain, 3; Manuscript Club, Vice President, 4; Collegiate Players, 2, 3; Choir, 2, 4; Collegian Reporter, 2, 3, Art Editor, 3; Student Ministerial Association, Vice President, 4.



BIRDIE MAE SLOTHOWER
Sioux City
Liberal Arts

Alpha Sigma, Usher, Directress, Secretary; Collegiate Players; W. A. A., 1; Sigma Tau Delta; Eta Sigma Phi, Vice President; Manuscript Club.

MARY STANKIEWICZ
Sioux City
Liberal Arts

Alpha Sigma, Corresponding Secretary, 2; Recording Secretary, 3; Reporter, 4; Psychology Club, 4; Pep Club, 3; W. A. A., 1, 2, 3, 4; Intramural, 1, 2, 3, 4; Yale-Harvard, 1, 2, 3; Collegian Reporter, 3; M. C. A., 2, 3.

BRUCE VAN DEMARK
Sioux City
Science

Iowa State College, 3; Alpha Tau Delta; Pre-Engineer's Club, 1, 2, 4; Football, 1.

BONNIE JEAN WALLEN
Sioux City
Liberal Arts

Kappa Zeta Chi, Usher, 3; W. A. A., Treasurer, 3; President, 4; Sigma Tau Delta; Phi Sigma Iota, Secretary, 2, 3; Historian, 4; Eta Sigma Phi, President, 4; Intramural Hockey, 1, 2, 3, 4; Basketball, 1, 2, 3, 4; Volleyball, 1, 2, 3, 4; Baseball, 1, 2, 3, 4; Yale-Harvard, 1, 2, 3, 4; Sweater Winner, 3; Scarf Winner, 2; Women's Sports Editor, 3; Snapshot Editor, 4; "Sioux", M. C. A., 2, 3, 4; Cabinet Member, 3, 4; Student Council, 4.

VIRGINIA SMITH
Onawa, Iowa
Music

Alpha Sigma, Pianist, 2; Usher, 3; Directress, 4; Historian, 4; Mu Phi Epsilon, Warden, 4; Sigma Mu, Secretary, 3; Chapel Choir, 1, 2, 3, 4; M. C. A. Radio Quartet, 4; Soprano Soloist in "Messiah", 4.

RUTH THATCHER
West Bend, Iowa
Liberal Arts

Alpha Sigma, Chaplain, 4; German Club, 2; Vesper Choir, 1; Collegian Reporter, 1; M. C. A., 1; Grace League, 1; Gospel Team, 1, 2.

JAMES VANDERSALL
Hancock, Iowa
Music

Sigma Theta Rho; German Club, 1, 2, 3; President, 3; Phi Beta Rho, 3; Band, 3; Sioux City Symphony Orchestra, 1, 2, 3, 4; Concert Master, 1, 2, 3; Faculty String Quartet, 1, 2, 3, 4; Grace League, 2, 3.

KELLOGG WELLS
Sioux City
Liberal Arts

Sigma Theta Rho; Dramatics, 2; Psychology Club, 4; Phi Sigma Iota, President, 3, 4; Choir, 1; M. C. A., 1, 2, 3.

RUTH WORRELL
Whiting, Iowa

Business Administration
Kappa Zeta Chi; W. A. A., 1; Vesper Choir, 1; Health Queen, 4.

HOYT GRANTER
Danbury, Iowa

Business Administration
Alpha Tau Delta, Vice President, 4; Biology Club, 1; Economics Club, 2, 3, 4; Intramural Basketball.

DON SNYDER
Rockford, Illinois
Business Administration

Sigma Theta Rho; "M" Club, 2, 3, 4; Secretary, 3; President, 4; Chapel Choir, 1; Football, 1, 2, 3, 4; Basketball, 1, 2, 3, 4; Kittenball, 1, 2, 3, 4.

VIRGINIA THOMAS
Sioux City
Liberal Arts

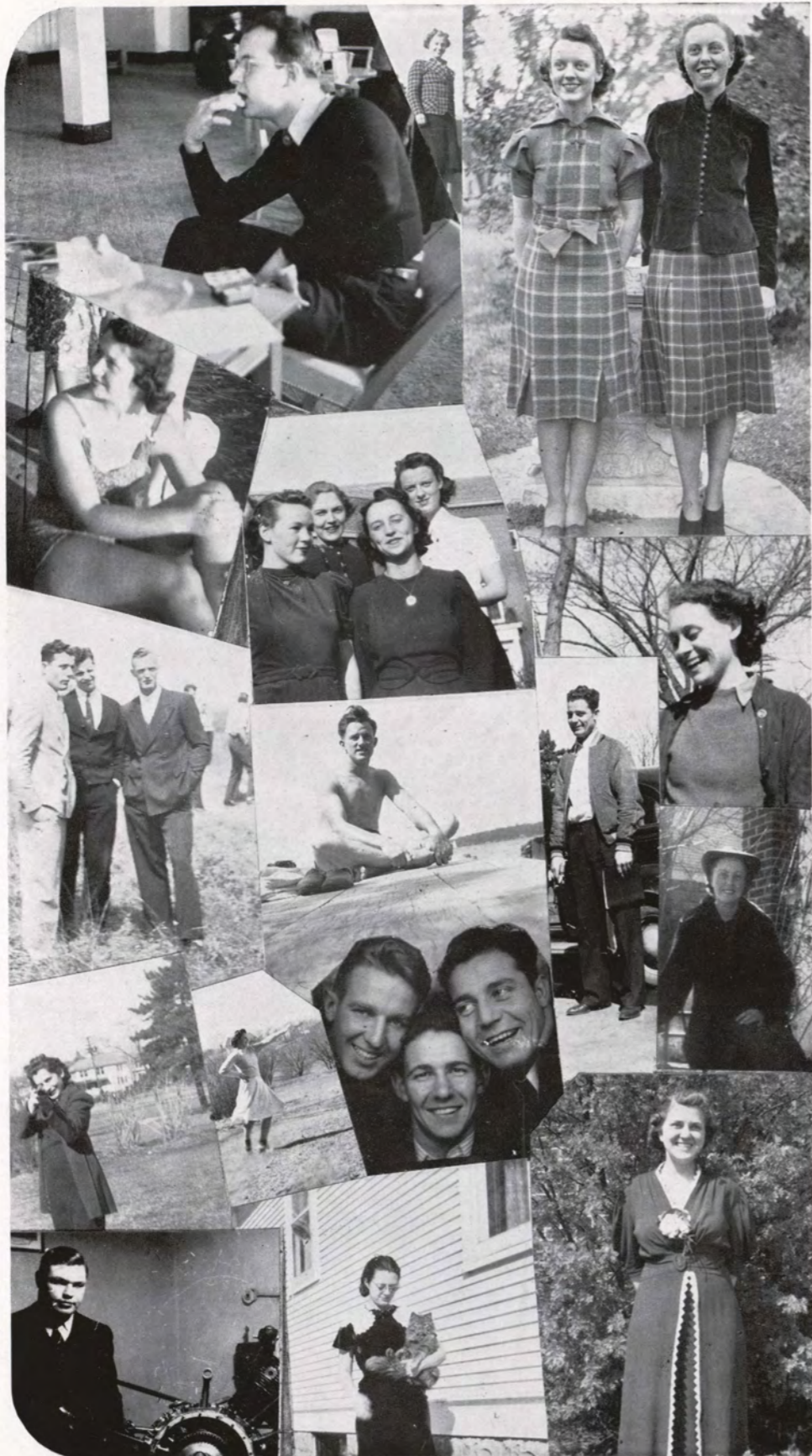
Kappa Zeta Chi, Directress, 3; Critic, 3; Vice President, 4; Dramatics, 2, 3; Sigma Tau Delta, 3, 4; Freshman Class Secretary; Senior Class Secretary; Collegian Reporter, 2; Freshmen Green Sheet Editor, 1; Editor Agora Edition, 2; Editor, "Sioux", 3; Board of Control, 1, 2, 3, 4; Secretary, 2; May Queen, 1; Agora Secretary, 2; Ishkoodah President, 1.

ELEANOR WADE
Sioux City
Liberal Arts

Psychology Club, 4; M. C. A., 1, 3, 4; Grace League, 1, 2, 3.

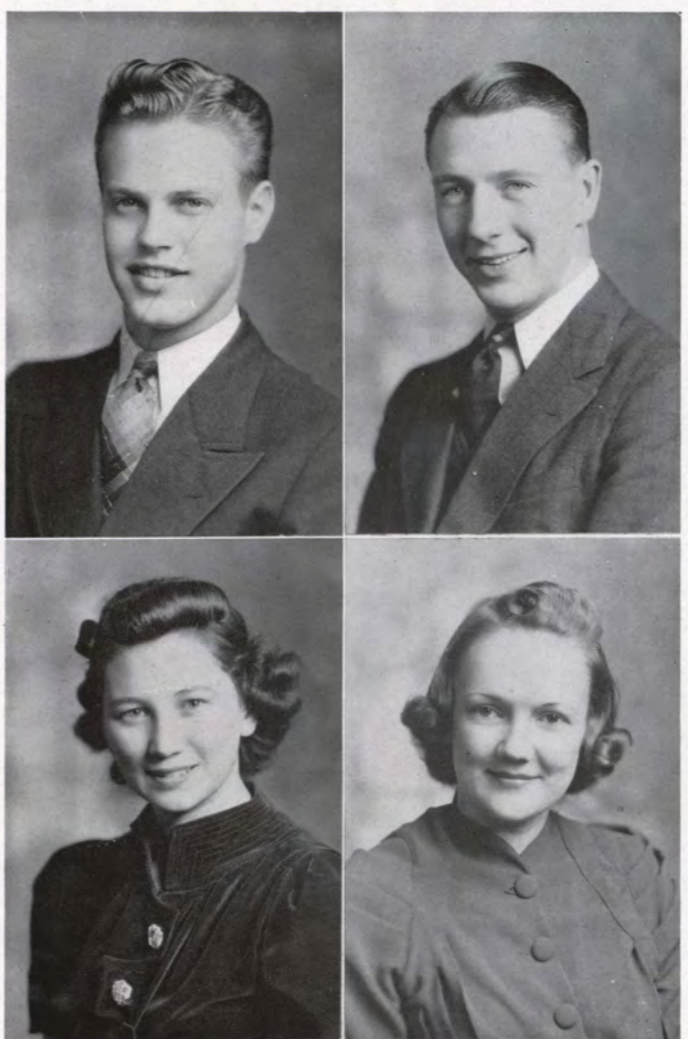
GARNETT WILLIAMS
Rockwell City, Iowa
Liberal Arts

Kappa Zeta Chi, Chaplain, 3; Psychology Club, 2, 3, 4; President, 3, 4; Economics Club, 2; Pi Gamma Mu, Vice President, 3; President, 4; M. C. A., 1, 2, 3, 4; Cabinet, 1, 4; Secretary-Treasurer, 2; Vice President, 3; Grace League, 1, 2, 3, 4; Cabinet, 1, 2, 4; Secretary-Treasurer, 3; International Relations Club, 1, 2, 3, 4; Secretary, 2.



1939 SIOUX

Class of 1940



1939 SIOUX

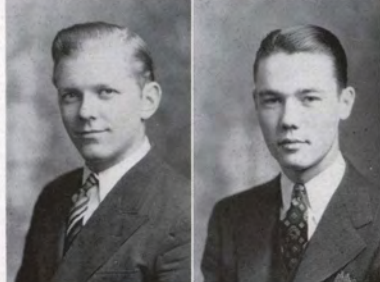
OFFICERS

- PresidentLester Olson
- Vice-PresidentArt Lundblad
- SecretaryKathlyn Kolp
- RepresentativeMargaret Long



VIRGINIA ALLEN
Recent member of the Diamond Ring Society.

JEANNE ANDERSON
Seldom seen with books, but frequently with a man.



JAMES ARRASMITH
A pre-med and a mighty "Merrie" fellow.

DOUGLAS BEGGS
Watch out, women, here I come.



DOROTHY BROOKE
Neither sinner nor saint.

B. ROY BROWN
He awoke one afternoon, and found himself—awake.



GLEN BURROW
A live wire with a short circuit.

ROBERT CHAPMAN
Knowledge in youth is wisdom in age.



JANET COE
Play and I'll play with you; study and you study alone.

NELLIE DEVRIES
Her outward quietness covers a wealth of hidden character.

HARLAN DEWELL
The better half of his education has not been found in books.

VERONA DEMOND
Gentleness does more than violence.

JEAN FOWLER
Napoleon was little; so is Jean.

LUCILLE FRITZCHE
Music washes away from the soul the dust of everyday life.

CONSTANCE GALL
Not real good and not real bad.

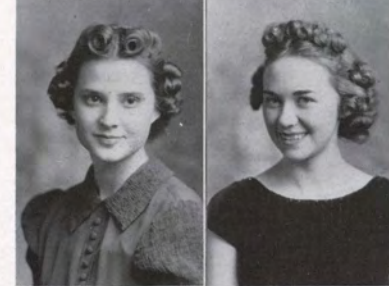
BETTY GREENE
The way to a professor's heart is through—

INEZ GROVE
Even the Health Office is a pleasant place with her on duty.

MARGARET GUSTESON
A case of quality; not quantity.

FRANCES GASINK
Something attempted, something done.

DEVON HAHN
He laughs best who laughs when the prof laughs.





ADELAIDE HANSEN
*Better sense in the head than cents
in the pocket.*

ALICE HANSON
The other half of the Sweeney-Hanson team.



ELWOOD HETLAND
*Absence from class makes the marks
grow rounder.*

LETHA HOWES
*To be determined is to have half
your work done.*



ROGER HUGHES
*Studying makes some people wise—
me otherwise.*

WALTER HURD
Another year has passed. Have you?



MILLICENT JENSEN
A guaranteed tonic for the blues.

IRENE JOHNSON
To surpass in the classroom is a habit of hers.



LUCILLE JOHNSON
*When you play, play hard. When you work,
don't play at all.*

RALPH KITTERMAN
*Arise with the lark, but avoid larks
in the evening.*

KATHLYN KOLP
As subtle as the b in subtle.

ANNA MARIE LARSON
*Some people have the habit of winking the
eye oftener than is absolutely necessary.*

ELLA LAURITSEN
Always right with the world.

BETTY LING
*An inspiration and example to us
American students.*

MARGARET LONG
"My heart belongs to—"

NANCY LOWRY
One of those whose mind runs in a whirl.

ART LUNDBLAD
I can resist anything but temptation.

LESTER MENKE
A word to the wise is useless.

DON MICHAELSON
A man who blushes is not quite a brute.

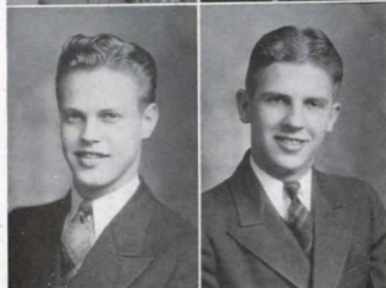
MINETTA MILLER
Her heart is not altogether in her work.





DEON MOOR
Serious? Yes... a little.

DOROTHY ANN OLSON
"Refreshing" is the word that describes Dorothy Ann.



LESTER OLSON
Popular because he doesn't seek popularity.

MARLYN PEDERSON
Many are called, but few get up.



HELEN POSEY
Ease with dignity.

MARION PRESTON
So persistent she would have the last word with an echo.



QUINTIN PRICHARD
Hey, give me the dope on that for the Reporter!

VERNA RODDA
A whizz on a dance floor.



ARNOLD RUDD
The greatest men are the simplest.

LEO SMITH
If a prof asks you a question at least let on that you know something about it.

RUTH SMITH
Smart, but doesn't advertise the fact.

CLIFF SPAYDE
Majors in alibiology.

AL STROZDAS
Men wouldn't die so fast if they didn't live so fast.

RUTH SUNDERLIN
Time deals gently with those who take it gently.

DON SWEENEY
Just so it's a good time---

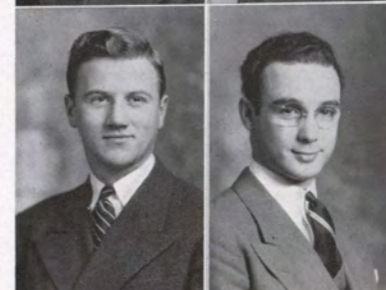
BOB SWIFT
Twice a year his studies come first.

IRVINE THOE
A blonde with brains.

JOHN THROWER
'Tis better to have loafed and flunked than never to have loafed at all.

PATRICIA WARNER
Sincere, friendly, and reliable.

JOYCE WEED
Zets, W. A. A., and John.





Class of 1941



OFFICERS

PresidentPerry Kruidenier
 Vice-PresidentGarrett Wallman
 SecretaryAlice Scott
 RepresentativeBetty Schunck



Edythe Mae Albert
Winnie Allen
Donnin Ames

Mary Louise Barrett
Maxine Behrens
Vilmer Berger

Milton Binger
Esther Blomberg
Beverly Borland

Ralph Brown
Rollie Buckholz
Dorothy Carrigg

Winifred Cheely
Maurice Clare
Glennys Corderman

Darlene Cottington
Doreen Dallam
Jackson Davis

Josephine Dixon
Eugene Emme
Maxine Ericksen

Frances Forsberg
Donald Fritzsche
Rolland Grefe

Evelyn Guelff
Dale Harter
Frances Haverfield

Joyce Held
Genevieve Hileman
Robert Hill





Dorothy Hill
Dureth Helen Hitchcock
Betty Huxtable



Wendell Jackson
Helen Jensen
Lyle Johnson



Dorothy Jones
Frank Kahoun
Emil Knipp



Perry Kruidenier
Clifford Lamkin
Kenneth Lawrence



Lucille Locke
Lewis Mahood
Lucille Mathena

James McNally
Oliver Mogck
Gwynne Morris



Norma Neilson
Leonard Nelson
Martha Helen Nelson



Myna Nickum
Ruth Olsen
Ernest Peterson



Lucille Pippett
Les Pruehs
Ruth Rance



Charlotte Robinson
Alice Scott
Irene Schaal





Betty Schunck
Robert Shaver
Gordon Sheldall



Leroy Sheley
Clarine Stone
Alice Swanson



Vivian Toomer
Ilo Vanderboom
Frances Walker



Mary Walker
Garrett Wallman
Mary Ellen Walpole



Charles Wert
Mildred Wikert
Robert Van Stryland



Donna Youngstrom
Ila Eberly

Class of 1942



OFFICERS

- PresidentEdgar Graham
- Vice-PresidentStanley Anderson
- SecretaryLauretta King
- RepresentativeBarbara Prichard



Glenn Adcock
Joyce Addy
Gerald Austin



Thelma Addy
Barbara Barry
Margaret Berg



Marie Berquist
Virginia Boline
James Bolton



Geraldine Booth
Betty Bootjer
Dorothy Bowen



Mary Beth Brinkman
Kathryn Brown
Stephen Brown



John Byers
Helen Cady
Louise Cairy



Alice Clayton
Bryce Clayton
Gerald Cobbs



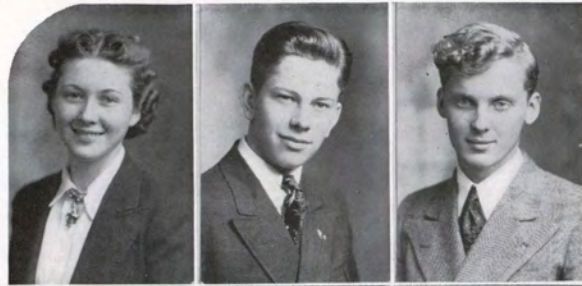
Eugene Coe
Dayrle Crabb
Arlene Demots



Gerald Fritzson
Celia Fordyce
Brown Garlock



Homer Garretson
Ivan Gossoo
Edgar Graham



Dorothy Granter
Billy Gray
George Green



Ted Grier
Raymond Gusteson
Charlotte Hackett



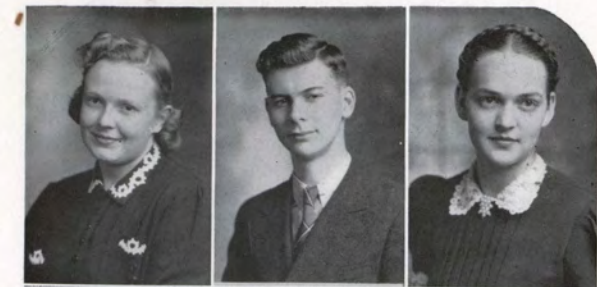
Ardis Hall
Doris Hall
Ardith Hart



Georgia Harvey
Robert Harvey
Merrie June Heetland



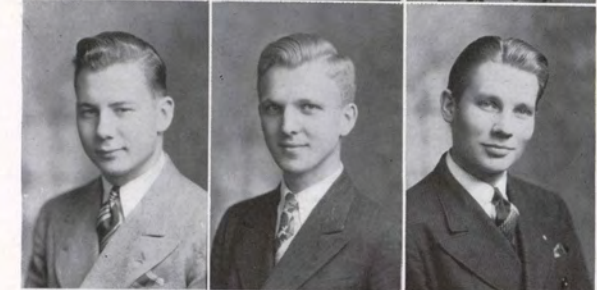
Robert Hempstead
Earl Hicks
Muriel Hiler



Betty Hoefler
Joseph Holdcroft
Edith Jensen



Helen Johnson
Jean Jones
Lauretta King



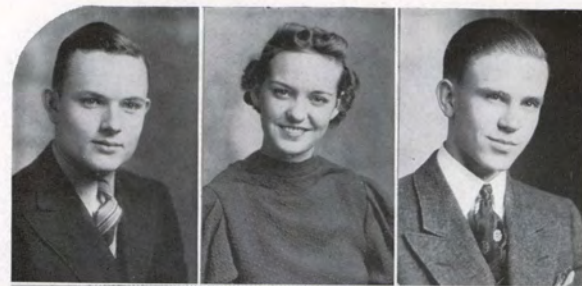
John Kolp
Anthony Kooiker
LeRoy Kuhlmann



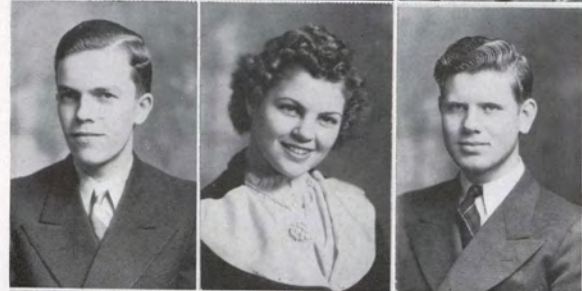
Romain Lamkin
Bette Larson
Donovan Leopold



Eric Liljestrand
Dorothy Luchsinger
Kathryn Madison



Roy Michaud
Marion Miller
Jack Milton



Douglas Oakleaf
Evelyn O'Harrow
Bob Olson



Jeanette Osterberg
Thuma Perrin
Marjorie Petheram



Yvonne Petrick
Mildred Pfeiffer
Barbara Prichard



Allan Priester
Dorothy Rensink
Charles Richards



Richard Reister
Ferne Roland
George Ross



William Rozeboom
Marjorie Salsbury
Betty Lou Saunderson



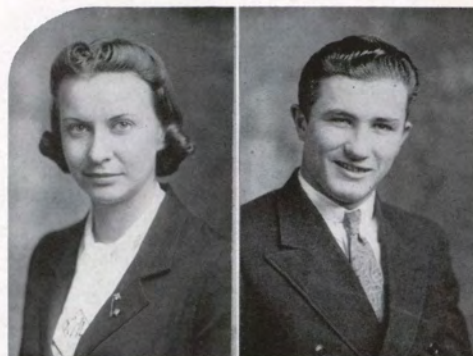
Kathleen Schatz
Ione Swanlund
Gordon Taft



Geraldine Thomas
Phyllis Thorngreen
Lester Triggs



Elna Van Camp
Ella Jean Waddell
Betty Lou Welding



Lavonne Wertz
Donald Widler



Mary Jane Winch
Leona Witzenburg



Shirleymae Zechmann
Clifford Lewis



Betty Lee Carter
Eileen Gilson

Second Semester Students

FRESHMEN

| Name | Home |
|-----------------------------|--------------------|
| Freda Agostine | Sioux City |
| Fred Ashley | Sioux City |
| Isadore Bichove | Sioux City |
| Francis Bentzinger | Sioux City |
| Betty Lee Carter..... | Sioux City |
| Philip Clark..... | Evanston, Illinois |
| Robert Cohen | Sioux City |
| Chyrl Cose | Sioux City |
| Larry Curtis | Sioux City |
| Carl Fooker | Kingsley |
| Eileen Gilson..... | Crofton, Nebraska |
| Paul Jones | Sioux City |
| Ruth Kingsbury | Sioux City |
| James Leachman | Sioux City |
| Edward McCarthy | Sioux City |
| Darrel McEntaffer | Sioux City |
| Clarence Morrison..... | Rock Rapids |
| Sam Newton | Sioux City |
| William Prescott | Sioux City |
| Maxcean Rook | Sioux City |
| Joe Rosenblum | Sioux City |
| Jay Sterling | Sioux City |
| George Tripp | Sioux City |
| Charles Verlinden | Sioux City |
| Martin Weiner | Sioux City |
| Bill Williges | Sioux City |
| John Maynard | Sioux City |
| Marvin Shieleceberger | Sioux City |

SOPHOMORES

| | |
|------------------|--------|
| Ila Eberly | Lawton |
|------------------|--------|

JUNIORS

| | |
|------------------------|----------------------|
| Jane Mahoney | Sioux City |
| William Dahlstrom..... | Bloomfield, Nebraska |

SENIORS

| | |
|--------------------------|------------|
| Carl Bolin | Sloan |
| Mrs. Chester Fowler..... | Sioux City |
| Russel Martin | Sioux City |



MUSIC



REVERIE

"—START HERE"





Professor MacCollin, better known to the students as "Mr. Mac", is the director of the Conservatory and of the nationally famous Morningside College Methodist Choir. The Sioux City Civic Concert Course, since its inception some years ago, has come to enjoy the cordial patronage of the entire city under Mr. MacCollin's direction.

CHOIR



A "bigger" and "better" choir was molded by Professor MacCollin for this year's tour. They again added to their laurels by becoming the first Morningside College organization to be accorded the honor of broadcasting over the National Broadcasting Company network from the nation's capital in Washington, D. C.

PERSONNEL

SOPRANO

Elizabeth MacCollin
Doris Mae Alexander
Helen Pearson
Alice Scott
Frances Haverfield
Myrle Austin
Merrie June Heetland
Maxine Foster
Anna Mae Klinker
Martha Helen Nelson
Carol Held
Dolorys Cook
Virginia Smith
Margaret Gusteson
Lucille Fritzsche
Edith Jensen

Helen Johnson
Jean Jones
Betty Bootjer
Marjorie Nelson

TENOR

Roger Hodgson
Thomas Moon
Charels Seward
Odell Woods
LeRoy Kuhlmann
Anthony Kooiker
Dale Flinders
Robert Brooks
Lawrence Johnson
George Green

James Bolton
Robert Caine
Eugene Emme

ALTO

Nadine Lindquist
Kathlyn Kolp
Virginia Crane
Barbara Lewton
Marjorie Primmer
Mary Beth Brinkman
Edythe Mae Albert
Dorothy Behrens
Dorothy Arnold
Ruth Harris
Doris Davis

Doreen Dallam
Irene Schaal
Ruth Smith

BASS

James McNally
Ralph Kitterman
Gerald Fritzon
William Rozeboom
Oliver Mogck
Robert McLain
James Arrasmith
Robert Rohwer
Keith Arnold
George Iseminger
Ronald Rawson
Norman Gefke

BAND



The band, under the flashing baton of Everett Timm, added another triumph to its growing reputation on its fifth annual tour throughout Iowa. Besides being a medium for promotion of pep at football and basketball games, it is a concert organization of which Morningside can be justly proud.

OFFICERS

| | |
|-----------------------|---------------------|
| Everett Timm | Conductor |
| Devon Hahn..... | Assistant Conductor |
| Harold Wright..... | Business Manager |
| Odell Woods..... | Drum Major |
| Dean Brox..... | Personnel Manager |
| Lawrence Johnson..... | Equipment Manager |



DRUM

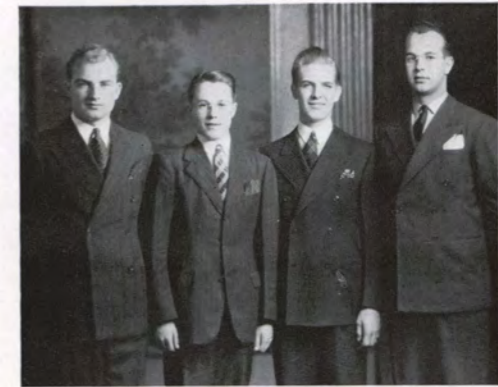
Every inch a shako to boots who leads the rades and field

MAJOR

drum major from is Odell Woods band in all pa-manuevers.

Male Quartet

Whether it be classic or barber-shop harmony the male quartet consisting of Dale Flinders, Eugene Emme, William Rozeboom, and George Iseminger is the group which is called upon to perform at the various school and civic functions.



Flinders, Emme, Rozeboom, Iseminger.



Jones, Anderson, Witzenburg.

Flute Quartet

Something new and different in ensembles is the newly organized Flute Quartet composed of Jeanne Anderson, first flute; Leona Witzenburg, second flute; Jean Jones, third flute; and Miriam Hartley, fourth flute. It was featured on the band trip and has appeared in Conservatory recitals.

Student String Quartet

A group which has attracted favorable comment from organizations throughout the city and surrounding territory where it has appeared in recital and as musical background is the Student String Quartet composed of Arnold Rudd, first violin; Nancy Lowry, second violin; Marjorie Pritchard, viola; Virginia Gasink, 'cello.



Rudd, Lowry, Pritchard, Gasink.

CIVIC CONCERT COURSE

Girls' Trio



Heetland, Scott, Crane.

Three misses, Alice Scott, Virginia Crane, and Merrie June Heetland, compose the girls' vocal trio. They have "swung" numbers for various student programs throughout the year, among which their "hill-billy" numbers and the novelty "Sister Kate" are the most memorable.

Symphony Orchestra



Under the inspiring guidance of Leo Kucinski, the Sioux City Symphony Orchestra has grown to be one of the outstanding organizations for the propagation of culture in northwest Iowa. The Symphony is a civic group composed of professional musicians and augmented by the most talented of the Conservatory students.

During the past year it appeared in concert with Ida Krehm, pianist; Stephan Hero, violinist; and Edward Dudley, tenor. Other artists who completed the schedule of the Civic Concert Course were Lawrence Tibbett, baritone; Angna Enters, dance mime; and the Mozart Choir Boys.



Edward Dudley Angna Enters
Stephan Hero Mozart Choir Boys
Ida Krehm Headliner Lawrence Tibbett



Crane

Mu Phi Epsilon

Ten years ago Phi Zeta Chapter of Mu Phi Epsilon, the national honor music sorority, was organized at Morningside College. The members are junior, senior, and faculty women of the Conservatory who have attained membership through high scholastic standing and musical ability.

Virginia Crane, who was the president last year, was a delegate to the national convention held in Chicago last summer.

Sigma Mu

Sigma Mu, the local honorary music sorority, has been an inactive but none the less prominent organization on the campus this year. Membership determined by high scholarship and musical ability was attained by Myrle Austin, Dorothy Behrens, Bertha Conner, Virginia Crane, Carol Held, Nadine Lindquist, Clara Louise McBurney, Lucille Johnson, Helen Pearson, and Virginia Smith.

The president for the past year was Lucille Johnson.



Johnson

DRAMATICS



Scene from a one-act play, "There's Always Tomorrow", by David L. Pettigrew.



Although this is only his first year at Morningside, Mr. Wiksell has established himself in the hearts of all Morningside playgoers by presenting four hit-productions. Outstanding were Philip Barry's "Holiday" and "The Rock", a religious drama.

This year through Mr. Wiksell's efforts, the Department of Speech has presented a series of radio plays over a local broadcasting station. Many improvements in equipment, make-up facilities, and scene-building have also been effected, resulting in the Scene Shop and the Workshop Theatre.

The Show-Off

CAST

| | | | |
|-------------------|-----------------|-------------------|---------------|
| Clara Hyland..... | Arlene DeMots | Joe Fisher..... | Robert Caine |
| Mrs. Fisher..... | Dorothy Granter | Aubrey Piper..... | Lester Menke |
| Amy Fisher..... | Betty Bootjer | Mr. Gill..... | Robert Rohwer |
| Frank Hyland..... | LeRoy Kuhlmann | Mr. Rogers..... | George Ross |
| Mr. Fisher..... | Lewis Mahood | | |

The 1938-39 dramatic season opened with George Kelly's well-known domestic farce "The Show-Off".

Lester Menke, playing the role of the loud-talking, loud-laughing "show-off", stole the show—lock, stock, and barrel. Three character parts were excellently done by Lewis Mahood as the hen-pecked husband; Robert Rohwer, a factory worker; and George Ross as a smooth-talking insurance man. Family life was well depicted by Dorothy Granter as the mother, Robert Caine as the near-genius son, and Betty Bootjer as the sweet young thing who would like very much to get married. Arlene DeMots as the married daughter and LeRoy Kuhlman, her husband, did very commendable bits of acting.



Holiday



CAST

| | |
|-----------------------------------|-------------------------------|
| Linda Seton.....Bette Greene | Edward Seton.....Dale Harter |
| Johnny Case.....Fred Davenport | Laura Cram.....Minetta Miller |
| Julia Seton.....Dorothy Ann Olson | Seton Cram.....Joe Turk |
| Ned Seton.....Bartlett Lubbers | HenryKellogg Wells |
| Susan Potter.....Margaret Long | CharlesJohn Brilman |
| Nick Potter.....John Thrower | DeliaVirginia Thomas |

Morningside Male Quartet

The outstanding play of the year was Philip Barry's "Holiday"—a sophisticated comedy about a young lady and a young man who refused to let money rule the affairs of the heart. Presented by Alpha Psi Omega, "Holiday" was a well-polished production by an excellent cast.

Edward Seton, the head of the "made of money" Seton family was well portrayed by Dale Harter. Bartlett Lubbers did an excellent job in the part of Ned Seton, a young man who was slightly "off the water-wagon". Ned's sister Julia, a typical social satellite, was splendidly characterized by Dorothy Ann Olson. The romantic leads were well handled by Fred Davenport as Johnny Case and Bette Greene in the role of Linda Seton. Johnny and Linda, aided by the happy-go-lucky couple, Nick and Susan Potter (John Thrower and Margaret Long) added much to the play with their well acted comedy. The parts of Seton and Laura Cram, the "relatives", were well taken by Joe Turk and Minetta Miller.

The Rock

CAST

| | |
|-------------------------------------|--------------------------------|
| Simon Peter.....Robert Caine | PandiraRobert Reese |
| Adinah.....Betty Lee Carter | TitusJames Gifford |
| DeborahCharlotte Robinson | AgurLawrence Johnson |
| Ucal.....B. Roy Brown | ServantKellogg Wells |
| Mary of Magdala.....Dorothy Gartner | ServantRobert Dannenburg |

On Palm Sunday, the Collegiate Players in cooperation with many of the Morningside churches, presented "The Rock" by Mary Hamlin. This drama, one of the most widely known religious plays, deals with the introduction of Simon Peter to the teachings of Jesus and his denial of the Christ on the eve of the crucifixion.

Robert Caine, in the role of Simon Peter, gave an outstanding performance. The parts of Adinah, Peter's wife, taken by Betty Lee Carter and Deborah, Adinah's mother, done by Charlotte Robinson, were both excellent portrayals. The difficult role of Ucal, the rich merchant, was well handled by Roy Brown. In the character of Mary of Magdala, a woman of questionable repute who was saved by the Master, Dorothy Gartner gave one of the best performances seen in a college production. Members of the supporting cast added greatly to the atmosphere of the play as did the realistic settings which portrayed typical scenes at the time of the crucifixion.



Radio Groups



This year the Speech Department of Morningside College has been on the air. Twenty plays, sponsored by the U. S. Post Office Department, have been broadcast over KSCJ and have given experience to more than thirty speech students. Among those participating were: Robert Caine, Stanley Anderson, Dorothy Gartner, Clifford Spayde, Frances Haverfield, Lillian Brown, Dale Harter, Clifford Lewis, Ted Grief, Lawrence Johnson, and Orval Spiry.

Commencement Play

The Commencement Play was A. A. Milne's "The Romantic Age". It centers around a girl who wants romance from the "—days of old when knights were bold". Of course, knighthood was in flower only about a thousand years previous. She meets her knight (an ordinary man in a masquerade costume) and falls madly in love only to refuse to marry him when she finds that he is just a business man. The rejected suitor then proposes to the heroine's sister: this creates the eternal triangle and—oh well, the play ends happily.

Alpha Psi Omega

The director of the Alpha Gamma Cast of Alpha Psi Omega, national honorary dramatics fraternity, was Dorothy Ann Olson. Margaret Long was vice-president and Bette Greene was secretary. This year the Cast gave an excellent performance of Philip Barry's romantic comedy, "Holiday".

Several members of the Cast journeyed to Wayne, Nebraska, to attend the Alpha Psi Omega play presented by Wayne State Teachers College. Judging of the high school plays presented at the annual play contest was done by the Cast.



Olson

Collegiate Players

This year the Collegiate Players took an active part in both on-stage and back-stage activities of the season's productions. At club meetings demonstrations, readings, plays, and reviews of contemporary plays were presented. Several of the members have earned points for Alpha Psi Omega and are nearing the goal of all the Players.

The officers for this year were: First semester—Bette Greene, president; Dale Harter, vice-president; Margaret Long, secretary; Second semester—Fred Davenport, president; Margaret Long, vice-president; and Winifred Cheely, secretary.



Greene



Mendal B. Miller heads the Forensics department of the college and has been, for the past year, president of the Iowa Forensics Association.

The results of Mr. Miller's ability as a coach are shown in the honors his teams won throughout the season. His keen insight, logical reasoning, and colorful expression served as an impetus to each debater. His good sportsmanship and companionship are an inspiration to all who come in contact with him.



Rohwer

Intercollegiate Debate

This year the debate season officially opened with a pre-season, non-decision tournament at Omaha, Nebraska. The representatives from Morningside were Dale Harter, Robert Hamel, Geraldine Booth, and Ruth Olsen. During the following month debates were carried on with colleges and universities in the surrounding territory.

During the last week in February and the first of March, Morningside debaters were in St. Paul attending the St. Thomas and St. Catherine tournaments. Our representatives were Fred Davenport, Robert Hamel, Robert Rohwer, Geraldine Booth, and Ruth Olsen.

The State Forensics meeting was held in Cedar Rapids, March 16, 17, and 18. Morningside representatives were Robert Rohwer, Robert Hamel, Geraldine Booth



Olsen



Harter

and Ruth Olsen. The boys' team won the state championship by receiving the highest superior rating. Robert Rohwer was rated the highest individual debater at the tournament and Robert Hamel was second. The girls received the second highest rating at the tournament by receiving an excellent. Ruth Olsen received a superior in the poetry-reading contest at this same tournament.

On March 24 and 25 Morningside College was represented by Lester Menke, Dale Harter, and Byron Walter at the annual Junior College debate meet held at Dakota Wesleyan, Mitchell, South Dakota. The tournament included debate, extemporaneous, and oratory.

In January Morningside debaters entertained two debate teams from Augustana College of Sioux Falls in two rounds of debate.



Booth

INDIVIDUAL SCHEDULES

FRED DAVENPORT

Wayne State Teachers College
Augustana College
Vermillion Tournament
St. Thomas Tournament
Pi Kappa Delta Provincial
Tournament
University of South Dakota

DALE HARTER

Wayne State Teachers College
Omaha Tournament
Augustana College
Vermillion Tournament
Mitchell Tournament

GERALDINE BOOTH

Augustana College
Omaha Tournament
St. Catherine Tournament
Western Union College
Iowa State Forensics Meet

ROBERT HAMEL

Wayne State Teachers College
Omaha Tournament
Augustana College
Vermillion Tournament
St. Thomas Tournament
Pi Kappa Delta Provincial
Tournament
University of South Dakota

RUTH OLSEN

Augustana College
Omaha Tournament
St. Catherine Tournament
Western Union College
Iowa State Forensics Meet

ROBERT ROHWER

Augustana College
Vermillion Tournament
St. Thomas Tournament
Iowa State Forensics Meet

LESTER MENKE

Mitchell Tournament

BYRON WALTER

Wayne State Teachers College
Mitchell Tournament

Pi Kappa Delta



Robert Rohwer

Pi Kappa Delta is a national honorary forensics fraternity in which degrees are awarded in orders of debate, oratory, and extemporaneous speaking. Morningside's Iowa Delta chapter is one of about 150 chapters which are scattered throughout thirty-six states. The question argued by the various chapters this year was, "Resolved: That the government should cease spending public funds to stimulate business."

Iowa Delta chapter officers of Pi Kappa Delta were: Robert Rohwer, president; Fred Davenport, vice-president; and Ruth Olsen, secretary-treasurer.

Fred Davenport and Robert Hamel were the Morningside representatives at the Provincial Pi Kappa Delta meeting held at Aberdeen, South Dakota, on March 30 and 31.



ORGANIZATIONS



Buckingham

Student Council

OFFICERS

Albert BuckinghamPresident
Keene RoadmanVice-President
Carol HeldSecretary

"I owe much to Morningside College. The rest of my life I shall be attempting to repay her for the privileges and opportunities she has put before me as one of the student body. It is with sorrow in my heart that I think of leaving the campus so soon. I have truly enjoyed my four years at Morningside, especially the last year as president of the Student Council. It has been a pleasure to work with and for such an appreciative student body. With such fine college spirit and faculty cooperation it has been merely a matter of routine to act as Student President. A special vote of thanks should go to the members of the Student Council for their enthusiasm and willingness to work in everything that has been undertaken. The Student Council joins with me in thanking all the students for their cooperation and in saying to the faculty, 'May Morningside continue to prosper'."

—"BUCK."

Board of Control



Top Row: Beyer, Stephens, Mills, Kanthlener, Gwinn.
Bottom Row: Thomas, Rohwer, Miller, Booth.

All student publications are under the jurisdiction of the Board of Control which consists of ten members—five faculty representatives and five students. Appointments for the newspaper, the yearbook, and all other publications are under its supervision.

The chairman of the board is Professor H. F. Kanthlener. Other faculty members are Miss Mirah Mills, Lynn Beyer, Ira J. Gwinn, and Dr. T. C. Stephens. The student members are Virginia Thomas, senior; Minetta Miller, junior; Robert Glock, sophomore; Geraldine Booth, freshman; and Robert Rohwer, representative-at-large. Quentin Prichard, editor, and Lester Olson, business manager of the Collegian Reporter, are ex-officio members.

Agora

For twenty-seven years there has existed on the Morningside campus an organization which includes every girl in school in its membership. Agora was the name given to this group by its founder, Miss Agnes Ferguson, who wished to see the opportunity for helpful fellowship created among the women of the college.

Two means of providing this opportunity are found in the Campus Sister movement which is a part of the Freshman Week activities, and the Mother-Daughter Banquet which is held every spring.

The officers for the past year were: Marjorie Primmer, president; Kathlyn Kolp, vice-president; Mildred Wikert, secretary; Betty Schunck, treasurer; Bernice Petronis, Senior representative; Marian Preston, Junior representative; Ruth Olsen, Sophomore representative; and Virginia Boline, Freshman representative. Dean Lillian Dimmit is the faculty adviser for the group.



Top Row: Primmer, Greene, Wikert, Schunck.
Bottom Row: Petronis, Preston, Olsen, Boline.

The Sioux



Top Row: Leopold, Nelson, Olson, Wikert, Roadman.
 Second Row: Brown, McBurney, Menke, Long, Lundquist.
 Third Row: Olsen, Swift, Petronis, Harter, Wallen.
 Fourth Row: Anderson, Saunderson, Johnson.

Between the covers of the Annual can be found a record of the year's progress at Morningside. The material is gathered and compiled by the various department editors under the direction of the editor-in-chief.

Collegian Reporter



Top Row: DeMond, Prichard, Johnson, Olson.
 Second Row: Grefe, Cheely, Seward, Warner.
 Third Row: Greene, Mahood, Madison, Gusteson.
 Fourth Row: Nickum, Roadman.

The all-college newspaper is written, edited, and managed by students who present us with a fresh edition each Thursday. Its various departments ably cover the social, political, and athletic phases of Morningside campus life in true journalistic style.

W. S. G. A.



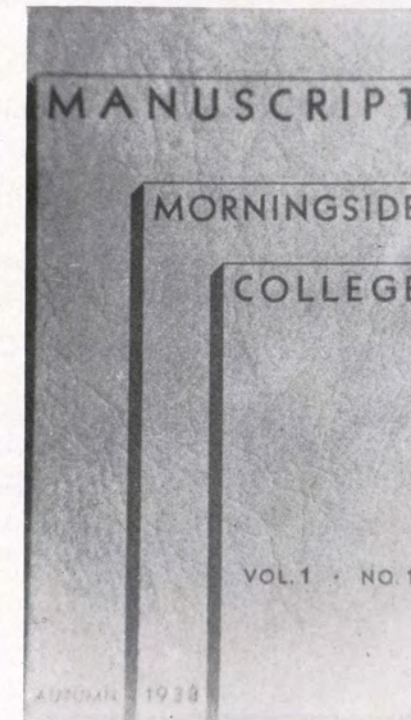
Top Row: Behrens, Crane, Long, Olsen.
Bottom Row: Mook, Pearson, Seavey, Alexander.

The Women's Self-Governing Association is the board elected by the dormitory girls to act as their governing body for the year. This group also serves as the Honor Court in all disciplinary matters which arise.

Several traditional social functions such as the Christmas Dinner and the Spring Formal as well as informal teas and musicales for both dormitory residents and other girls are under the sponsorship of the W. S. G. A.

Members for the past year have been Dorothy Behrens, president; Virginia Crane, vice-president and Senior hall president; Margaret Long, social chairman; Ruth Olsen, secretary; Mrs. Mook, social director; Helen Pearson, Junior hall president; Alberta Seavey, Sophomore hall president; and Doris Mae Alexander, Freshman hall president.

Manuscript Magazine



Manuscript Magazine, the first literary publication on the campus, made its initial appearance December 7, 1938. The second issue was published May 10, 1939. The cost of the magazine is included in the Student Activity ticket.

The magazine is being sponsored by the Manuscript Club; but any students as well as alumni are invited to contribute. The plan is to have two issues yearly.

Miriam Hawthorne was the first editor. Those assisting her were Lester Olson, Business Manager, and Bette Greene, Irene Johnson, and Charels Seward, Associate Editors. Lynn Beyer was the faculty adviser. The magazine has a regular exchange list with other colleges and universities and copies are also sent out to high schools and to Sioux City public libraries.

M. C. A.



Thoe

The Morningside Christian Association is the group which start the college off to a successful year every fall by sponsoring the freshman week activities. During the year M. C. A. continues its goodwill work through the weekly Sunday broadcasts, firesides in faculty homes, traveling gospel teams, Stone Park retreats, and religious emphasis week in the spring and in the fall. Every Tuesday morning meetings are held in the Student Union under the leadership of Irvine Thoe, president. Other officers are: Keene Roadman, vice president; Irene Anderson, secretary; Dale Anderson, treasurer; and Miriam Hawthorn, representative of Y. W. C. A.

Cosmopolitan Club

In 1926 a chapter of the National Association of Cosmopolitan Clubs was established at Morningside. The club maintains a two-fold purpose: to create a spirit of goodwill and fellowship among students of various nationalities at Morningside; and to learn more about the customs and attitudes of people in foreign lands. The outstanding events of the year were the Christmas breakfast held at Dr. Johnson's home and the "Cosmopolitan Night".

The officers were: Irene Anderson, president; Betty Ling, vice-president; Frances Walker, secretary; and Lester Menke, treasurer.



Anderson

Zeta Sigma

The local honor scholastic society has a twofold objective: to give recognition to those students whose scholastic records show evidence of special merit, and to promote the ideals of true scholarship. To become eligible for Zeta Sigma a student must meet all the requirements for graduation and have a scholarship average of three and one-third honor points. Twelve graduates of the Class of 1938 were elected to membership in the group.

Officers for the past year have been: Mrs. E. Satrang, president; Mrs. M. E. Graber, vice-president; Miss Ruth Wedgwood, secretary; and Mrs. L. C. McClaran, treasurer.



Satrang

Alumni Organization

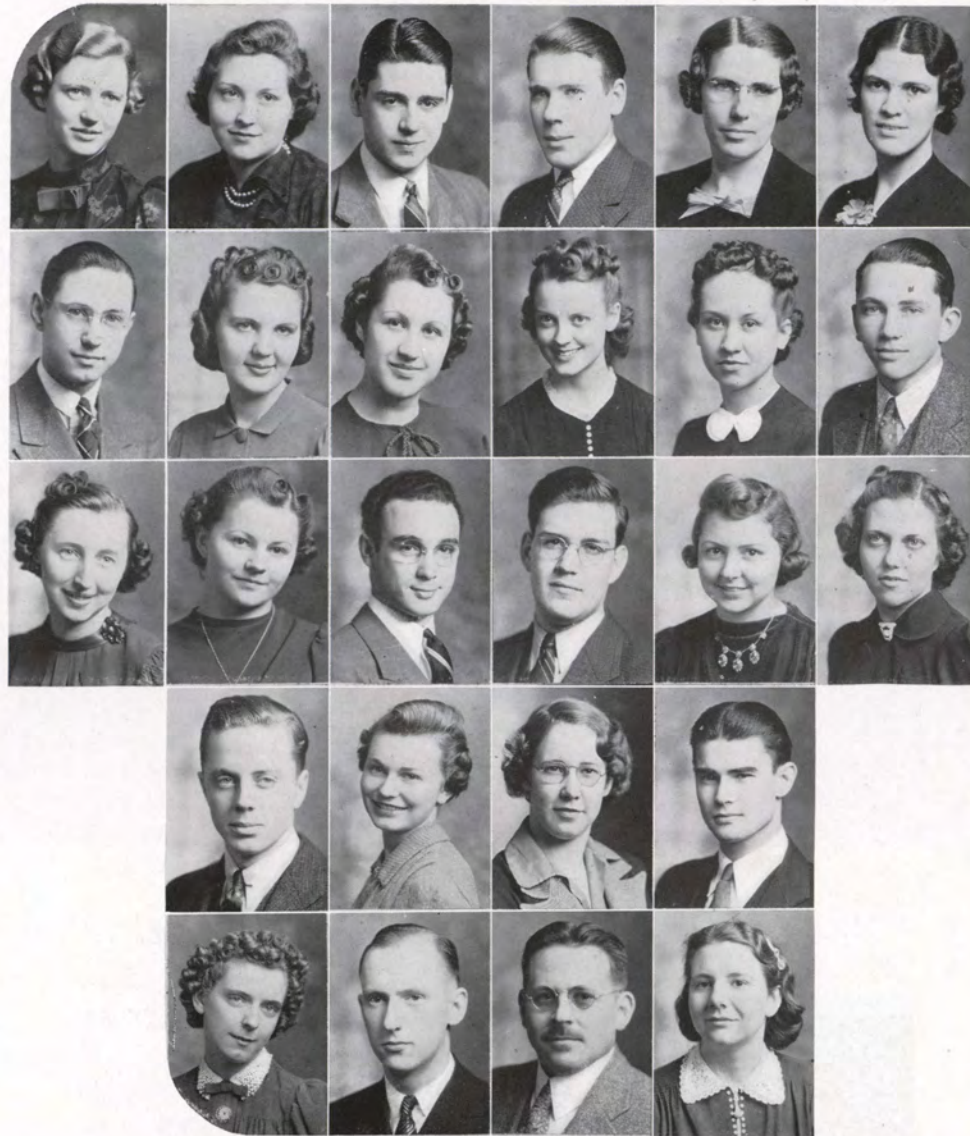
Each June the alumni organization initiates the graduates into its ranks; into the Tribe of the Sioux—a group which has steadily increased its number until in almost every state of the Union it has members who keep faithful contact with their Alma Mater.

Newly elected officers are: president, Frank Henderson, Sioux City, '20; vice-president, Ada Carter, Whiting, '20; secretary, W. C. Wolle, Sioux City, '20; treasurer, Ira J. Gwinn, Sioux City, '22.



Henderson

Psychology Club



Top Row: Williams, Held, Naryka, Pawson, Carlin, Wade.
 Second Row: Wells, Petronis, Stankiewicz, DePue, Hosner, Grefe.
 Third Row: Grove, Brown, Swift, Harter, Held, Sunderlin.
 Fourth Row: Hurd, Pippett, Thorngreen, McLaughlin.
 Fifth Row: Roland, Gusteson, Emme, Howes.

The Psychology Club of Morningside College was organized in 1935 by Dr. Earl E. Emme who is the adviser. It provides opportunity for psychology students to present additional material of psychological content not always adaptable for classroom procedure. Fellowship for students pursuing similar academic interests is stimulated greatly by the monthly meetings.

Officers for the year were: Garnett Williams, president; Lawrence Johnson, vice-president; and Bernice Petronis, secretary-treasurer.

Beta Beta Beta

Beta Beta Beta, the national honorary society for students of the biological sciences, was established to encourage scholarly attainment in biology and thus reserves its membership to those who achieve high academic records and who have a special interest in the subject. It maintains a three-fold program: namely, stimulation of sound scholarship; dissemination of scientific knowledge; and promotion of biological research.

Officers presiding over Tau chapter this year were: Borden Buchanan, president; Robert Chapman, vice-president; James Arrasmith, secretary; and Barbara Forrester, historian. Dr. T. C. Stephens is the faculty adviser.



Buchanan

Biology Club



Naryka

To promote scientific ideals and to prepare its members for membership in Beta Beta Beta is the twofold aim of the Biology Club. This club is maintained in the Biology department for the purpose of creating and developing interest in biological fields.

Officers this year were: Joe Naryka, president; Wendell Jackson, vice-president; and Dale Rogers, secretary-treasurer.

Sigma Tau Delta



Hawthorn

The Gamma Beta chapter of Sigma Tau Delta, national honorary English fraternity, was organized at Morningside College in 1926. Both the study of literature and the pursuit of writing are stressed. Members, who must be majors in the English department, are elected on the basis of scholastic standing and proficiency in English. Original work of the members is submitted for publication to the National Quarterly Magazine, *The Rectangle*, twice during the year.

Officers for the year were: Miriam Hawthorn, president; Margaret Gusteson, vice-president; Doris Mae Alexander, secretary; and Miss Mirah Mills, faculty adviser.

Manuscript Club

Manuscript Club was organized on March 18, 1938, with the aim "to promote creative writing among the students of the college." Membership is open to any student on the campus and is attained by submitting an original manuscript which is passed upon by the entire club. Because of the nature of the work undertaken, membership has been necessarily limited to sixteen members who are required to submit manuscripts regularly. These, together with those submitted by prospective members, form the basis of the programs.

Officers for this year were: Bette Greene, president; Irene Anderson, secretary; and Lynn Beyer, faculty adviser.



Greene

Pre-Engineers

The oldest independent organization on the campus is the Pre-Engineers Club which was organized in 1920 with a two-fold object in view: to serve as a means of stimulating a spirit of friendliness and cooperation among the engineering students of the school, and to encourage advanced study and research in the field of engineering.

One of the highlights of the winter social season is the annual "Engineers' Night", during which the wonders of the world of science are demonstrated by the members of the department.

Officers this year were: Ted Barnowe, president; Stanley Bruntjen, vice-president; George Koch, secretary; John Swanson, treasurer; Bruce Lindsay, historian. Dean Graber and Mr. Gwinn served as advisers.



Barnowe

Phi Sigma Iota

Phi Sigma Iota is maintained for students of outstanding ability and attainment in Romance languages and literature. The purpose of the society is to stimulate advanced work and individual research in this field, and to promote a sentiment of friendship between our own nation and the nations using these languages.

Officers this year were: Kellogg Wells, president; Ella Lauritsen, vice-president; Miriam Corkhill, secretary; Bonnie Jean Wallen, historian; and Henry F. Kanthlener, faculty adviser and treasurer.



Wells

Alpha Kappa Delta



Hawthorn

Alpha Kappa Delta, national honorary sociological fraternity, was organized at Morningside in 1922 for the purpose expressed in its Greek name, Anthropos Katamonthano Diakonesis, an investigating society for the purpose of service to humanity. It has been intermittently active in scholastic and social pursuits for sixteen years. Membership requires a high scholastic average in all subjects and a major or minor in sociology.

Miriam Hawthorn has been president the past year.

Eta Sigma Phi

Eta Sigma Phi is the national honorary Latin and Greek fraternity. A major in Latin or Greek and high scholarship are required for membership. At the monthly meetings this year the programs were based on a study of Greek and Roman mythology.

The officers for the past year were: Bonnie Jean Wallen, president; Birdie Mae Slothower, vice-president; Bernice Petronis, secretary; and Deon Moor, treasurer. Honorary members include Miss Lillian E. Dimmitt, Miss Laura C. Fisher, Miss Ethel R. Murray, and Miriam Hartley.



Wallen

Pi Gamma Mu

All senior students who have striven for high scholarship in their respective social science fields and succeeded are eligible for membership in Pi Gamma Mu, the national honorary social science fraternity. The requirement for eligibility is a grade average of B for thirty semester hours in a field with fifteen hours from one department.

The officers for the past year were: Bill Kirchner, president; Garnett Williams, vice-president; Miss Murray, secretary-treasurer; Dr. Emme, director. Faculty members are: Dean Dimmitt, Mr. Miller, Mr. Wiksell, Miss McNee, and Dean Johnson.



Williams

Sigma Pi Sigma

The Omicron chapter of Sigma Pi Sigma is maintained at Morningside for those students who have outstanding interests and academic records in the physics department. Its purpose is to promote an interest in the advanced study of physics, to encourage a spirit of cooperation and friendship among those who have shown marked ability in this particular phase of science, and to stimulate individual research.

Directing the activities of Sigma Pi Sigma which included weekly luncheon meetings this year were: Ted Barnowe, president; George Koch, vice-president; and Dale Flinders, secretary-treasurer. Dr. M. E. Graber serves as adviser to the club.



Barnowe

International Relations Club

The purpose of the International Relations Club is to foster student interest in world-wide economic and political problems, and to provide an opportunity to discuss matters of peace, finance, government, and transportation. The club is significant in that it affords students the chance to understand better America's relations with the world.

Delegates from Morningside were sent to the national convention this spring where they discussed world problems with representatives from the various colleges and universities of the nation.

The faculty adviser is Dr. E. H. Kleinpell.

College League

Grace M. E. Church offers to every college student an opportunity for religious self-expression through the medium of the College League. At the weekly Sunday evening meetings speakers from outside and from the college appear and special musical programs are provided.

Officers for this year were: Dale Anderson, president; Ruth Hayward, vice-president; Doreen Dallam, secretary-treasurer; LeRoy Kuhlmann, social chairman.

Engineering Groups

Out of the Engineer's Club there have come three groups which are rapidly growing in popularity among the members of the Engineering Department. The first group, the Aeronautics division, was organized in 1937 with a two-fold purpose: to further the students' interest in aeronautics and to give those taking aeronautical engineering the opportunity to meet and work together on different technical projects of common interest.

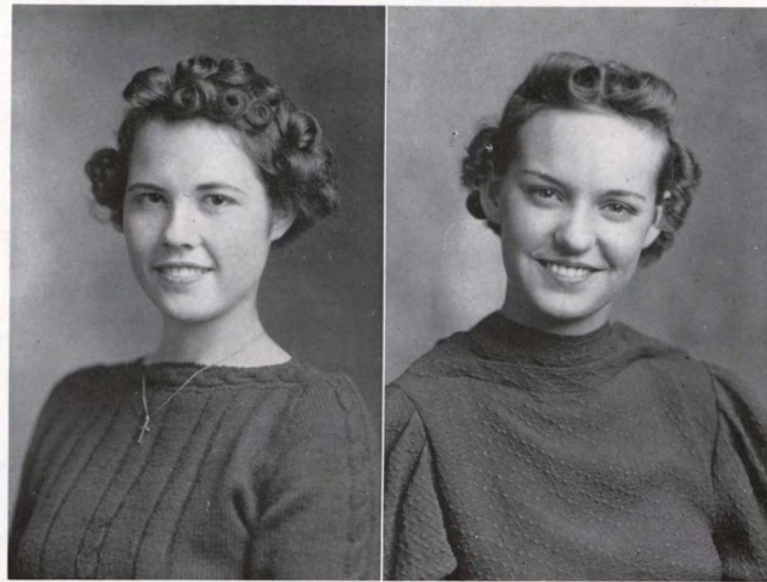
Morningside is one of two Iowa Schools, the other being Iowa State College, which is approved by the United States Aeronautical Board to teach Aeronautical Engineering. Weekly meetings include reports by members on different technical subjects pertaining to aeronautical engineering. The officers for the first semester were: Vic Alvey, president; Borden Buchanan, vice-president; DeLos Hartwig, secretary-treasurer. Second semester officers were: Vic Alvey, president; Fuller Haskins, vice-president; Bob Harvey, secretary-treasurer.

Another unit of the Engineering Club is the Radio Club. One cannot become a member of this group unless he is already a member of the Engineer's Club and has a special interest in radio which he wishes to develop.

Papers and reports which deal with the most advanced phases in radio are given before the Engineer's Club. Members of the Radio Club are also active members in the Naval Reserve and National Guard Radio Unit.

The newly-chartered Photography Club was organized with the purpose of creating interest in photography and of giving to those interested in it an opportunity to learn the fundamentals and technical processes of photography. Meetings held every Tuesday included reports given by the members on different phases of photography. The governing body consisted of Mr. I. J. Gwinn, adviser, and a committee of four—Harlan Dewell, chairman, Vic Alvey, Glenn Pomeroy, and George Koch.

Ishkoodah



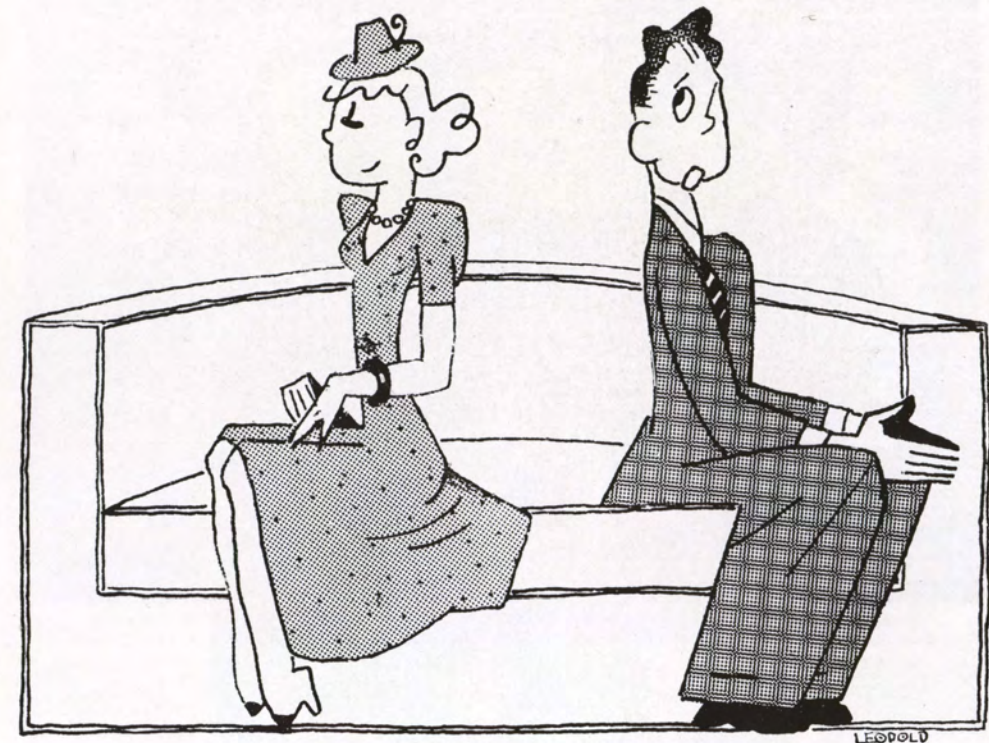
Booth

Miller

The first social group in which women students at Morningside may become members is Ishkoodah—the freshman girls' society. The bi-monthly meetings held in the Student Union are planned for entertainment and also to give each girl substantial and worthwhile contacts which will enrich her college career.

Two formal dances were the highlights of the past year's social calendar which also included a roller-skating party and a picnic for all frosh men.

Officers for the first semester were Gerry Booth, president; Kathryn Brown, vice-president; Jean Jones, secretary-treasurer; Helen Johnson, sergeant-at-arms; and Virginia Boline, program chairman. Those who served during the second term were Marian Miller, president; Lauree Wood, vice-president; Barbara Prichard, secretary-treasurer; Louise Cairy, sergeant-at-arms; and Betty Lou Saunderson, program chairman. Mrs. Paul E. Johnson is the adviser for the group.



SORORITIES AND FRATERNITIES



Top Row: Anderson, Arnold, Blomberg, Carlin, Coe.
 Second Row: Conner, DeVries, Forsberg, Hawthorn, Hosner.
 Third Row: Lauritsen, Mathena, McBurney, Petronis, Robinson.
 Fourth Row: Slothower, R. Smith, V. Smith.
 Fifth Row: Stankiewicz, Thatcher, Youngstrom.

Alpha Sigma



*The Useful and
the Pleasing*

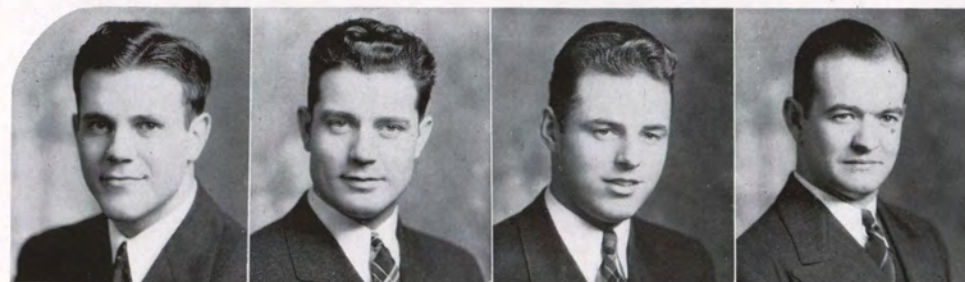
OFFICERS

| | <i>First Semester</i> | <i>Second Semester</i> |
|------------------------------|-----------------------|------------------------|
| President..... | Miriam Hawthorn | Bernice Petronis |
| Vice-President..... | Bertha Connor | Janet Coe |
| Recording Secretary..... | Agnes Carlin | Birdie Mae Slothower |
| Corresponding Secretary..... | Jean Hosner | Donna Youngstrom |
| Treasurer..... | Bernice Petronis | Esther Blomberg |
| Reporter..... | Mary Stankiewicz | Clara Louise McBurney |
| Historian..... | Genevieve Whittington | Virginia Smith |
| Chaplain..... | Ruth Thatcher | Miriam Hawthorn |
| Directresses..... | Birdie Mae Slothower | Genevieve Whittington |
| | Virginia Smith | Dolorys Cook |
| Musician..... | Dolorys Cook | Bertha Connor |
| Usher..... | Birdie Mae Slothower | Agnes Carlin |

MEMBERS

| <i>Seniors</i> | | <i>Juniors</i> | <i>Sophomores</i> |
|-----------------|-----------------------|-----------------------|--------------------|
| Irene Anderson | Clara Louise McBurney | Janet Coe | Esther Blomberg |
| Dorothy Arnold | Bernice Petronis | Dolorys Cook | Donna Youngstrom |
| Agnes Carlin | Birdie Mae Slothower | Genevieve Whittington | Lucille Mathena |
| Bertha Connor | Virginia Smith | Nellie De Vries | Frances Forsberg |
| Miriam Hawthorn | Many Stankiewicz | Ruth Smith | Charlotte Robinson |
| Jean Hosner | Ruth Thatcher | Ella Lauritsen | |





Top Row: Smith, Buckingham, Kraai, Burrow.
 Second Row: Hetland, Lundblad, Spayde.
 Third Row: Widler, Vanderboom, Michaelson.
 Fourth Row: Triggs, Lewis, Swift.

Phi Sigma



*We Retrace No
Footsteps*

OFFICERS

| | <i>First Term</i> | <i>Second Term</i> | <i>Third Term</i> |
|-----------------------|-------------------|--------------------|-------------------|
| President..... | Russell Kraai | Glen Burrow | Leo Smith |
| Vice-President..... | Joseph Turk | Elwood Hetland | Arthur Lundblad |
| Secretary..... | Clarence Soucek | Leo Smith | Bob Swift |
| Treasurer..... | Albert Buckingham | Albert Buckingham | Albert Buckingham |
| Pledge Master..... | Elwood Hetland | Don Michaelson | Don Michaelson |
| | Clifford Spayde | Clifford Spayde | Irving Bliss |
| Sergeant-at-Arms..... | Arthur Lundblad | Ilo Vanderboom | Lester Triggs |

MEMBERS

| <i>Seniors</i> | <i>Juniors</i> | <i>Sophomores</i> | <i>Freshmen</i> |
|-------------------|-----------------|-------------------|-----------------|
| Joseph Turk | Glen Burrow | Ilo Vanderboom | Lester Triggs |
| Russell Kraai | Elwood Hetland | Jack Loff | Irving Bliss |
| Albert Buckingham | Leo Smith | Bob Swift | Orval Spiry |
| | Don Michaelson | | Don Widler |
| | Arthur Lundblad | | Cliff Lewis |
| | Clarence Soucek | | Art Clayton |
| | Frank Allison | | Pete Clayton |
| | Clifford Spayde | | Albert Haenfler |





Top Row: Held, Alexander, Nelson, Crane, Forrester, Lundquist.
 Second Row: Brown, Primmer, Wallen, Held, Thomas, Lewton.
 Third Row: Kolp, Gall, Pearson, Brilman, Seavey, Lowry.
 Fourth Row: Long, Olson, Fowler, Hanson, Weed, Moor.
 Fifth Row: Cheely, Olsen, Held, Pippett, Wikert.
 Sixth Row: Neilson, Barrett, Scott, Jones, Nickum.
 Seventh Row: Hitchcock, Corderman, Nelson.

Kappa Zeta Chi



To Be Rather Than
to Seem

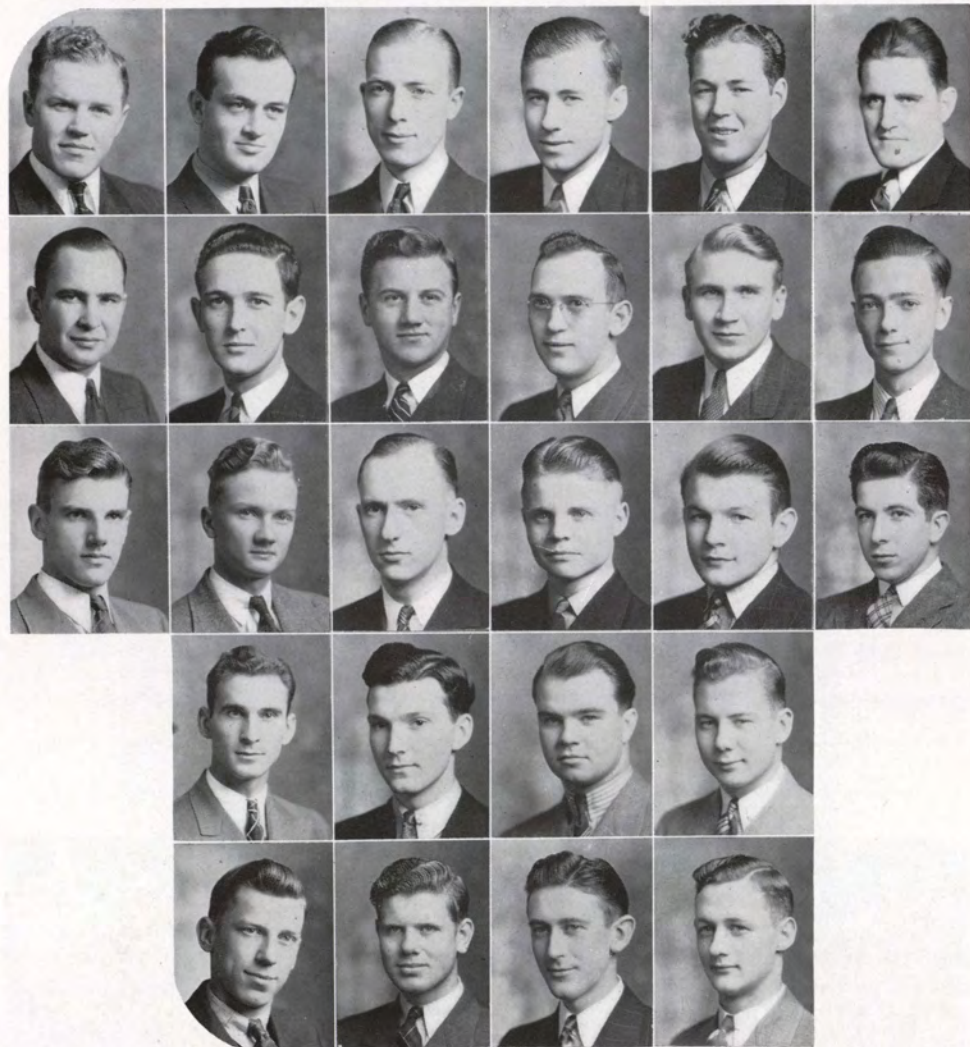
OFFICERS

| | <i>First Semester</i> | <i>Second Semester</i> |
|------------------------------|-----------------------|------------------------|
| President..... | Marjorie Primmer | Carol Held |
| Vice-President..... | Virginia Thomas | Virginia Thomas |
| Recording Secretary..... | Hazel Held | Constance Gall |
| Corresponding Secretary..... | Barbara Lewton | Barbara Forrester |
| Treasurer..... | Margaret Lundquist | Margaret Lundquist |
| Critics..... | Carol Held | Marjorie Primmer |
| | Dorothy Ann Olson | Barbara Lewton |
| Chaplain..... | Virginia Allen | Alice Scott |
| Directresses..... | Virginia Crane | Dorothy Jones |
| | Doris Mae Alexander | Helen Pearson |
| Librarian..... | Constance Gall | Kathlyn Kolp |
| Ushers..... | Jean Fowler | Lucille Pippett |
| | Kathlyn Kolp | Joyce Held |

MEMBERS

| <i>Seniors</i> | <i>Juniors</i> | <i>Sophomores</i> | | |
|---------------------|--------------------|-------------------|-----------------|---------------------|
| Doris Mae Alexander | Bonnie Jean Wallen | Jean Fowler | Alice Scott | Martha Helen Nelson |
| Lillian Brown | Alberta Seavey | Constance Gall | Dorothy Jones | Glennys Corderman |
| Virginia Crane | Helen Pearson | Alice Hanson | Shirley Wallen | Ruth Harris |
| Barbara Forrester | Mary Brilman | Kathlyn Kolp | Joyce Held | Nancy Kingsbury |
| Carol Held | Dorothy Nelson | Margaret Long | Mildred Wikert | Marjorie Nelson |
| Hazel Held | Dorothy Behrens | Nancy Lowry | Lucille Pippett | Norma Neilson |
| Barbara Lewton | Marian Walsh | Deon Moor | Myna Nickum | Dureth Helen |
| Margaret Lundquist | Marjorie Pritchard | Dorothy Ann Olson | Winifred Cheely | Hitchcock |
| Marjorie Primmer | Garnett Williams | Joyce Weed | Ruth Olsen | Mary Louise Barrett |
| Virginia Thomas | | Irvine Thoe | | Maxine Behrens |
| | | Virginia Allen | | |





Top Row: Brinkman, Van DeMark, Rogers, Morrison, Granter, Forbes.
 Second Row: Down, Wallman, Sweeney, Hughes, Menke, Mahood.
 Third Row: Hempstead, Bolton, Gusteson, Nelson, Brown, Thrower.
 Fourth Row: Buckholz, Brown, Leopold, Kolp.
 Fifth Row: Cobbs, Olson, Caine, Hicks.

Alpha Tau Delta



*Smoothness in Manner,
Strength in All Things.*

OFFICERS

| | <i>First Semester</i> | <i>Second Semester</i> |
|-----------------------|-----------------------|------------------------|
| President..... | H. G. Morrison | David Brinkman |
| Vice-President..... | William Hughes | Hoyt Granter |
| Secretary..... | Ralph Brown | Ray Gusteson |
| Treasurer..... | Wilbur Rogers | Gene Kennedy |
| Sergeant-at-Arms..... | Thomas Down | Donovan Leopold |

MEMBERS

| <i>Seniors</i> | <i>Juniors</i> | <i>Freshmen</i> | |
|------------------|-------------------|--------------------|-----------------|
| Dale Rogers | Don Sweeney | James Bolton | Gene Kennedy |
| David Brinkman | Lester Menke | Stephen Brown | Ray Gusteson |
| Thomas Down | John Thrower | Jerry Cobbs | John Kolp |
| H. G. Morrison | Russell Martin | Robert Hempstead | Earl Hicks |
| Richard Forbes | | John Maynard | Dick Woods |
| Hoyt Granter | <i>Sophomores</i> | Larry Curtis | Bob Caine |
| Bruce Van DeMark | Ralph Brown | Don Plagman | Bob Olson |
| William Hughes | Garrett Wallman | Harold Wellmerling | Philip Clark |
| | Lewis Mahood | Dean Harrison | Donovan Leopold |
| | Leonard Nelson | | |
| | Rollie Buckholz | | |
| | Bob Perrin | | |





Top Row: Carrigg, DeMond, Jensen, Preston.
 Second Row: Grove, Gusteson, DePue, Brooke.
 Third Row: Schunck, Sunderlin, Larson, Walpole.
 Fourth Row: Greene, Haverfield, Walker, Jensen.
 Fifth Row: Hill, Anderson, Johnson.

Kappa Pi Alpha



*Faithfully, Bravely,
Happily*

OFFICERS

| | <i>First Semester</i> | <i>Second Semester</i> |
|------------------------------|-----------------------|------------------------|
| President..... | Evelyn DePue | Evelyn DePue |
| Vice-President..... | Margaret Gusteson | Alta Claire Harrison |
| Recording Secretary..... | Marion Preston | Margaret Gusteson |
| Corresponding Secretary..... | Ann Larson | Irene Johnson |
| Treasurer..... | Bette Greene | Mary Ellen Walpole |
| Chaplain..... | Ruth Sunderlin | Betty Schunck |
| Critic..... | Irene Johnson | Millicent Jensen |
| Sergeant-at-Arms..... | Ruth Sunderlin | Dorothy Brooke |
| Librarian..... | Jean Lott | Dorothy Hill |
| Hall Chairman..... | Millicent Jensen | Frances Haverfield |
| Social Chairman..... | Marion Preston | Ann Larson |
| Reporter..... | Jean Lott | Irene Johnson |

MEMBERS

| <i>Seniors</i> | <i>Juniors</i> | <i>Sophomores</i> |
|-------------------|----------------------|----------------------|
| Evelyn DePue | Dorothy Brooke | Nancy Arthur |
| Margaret Gusteson | Verona DeMond | Dorothy Carrigg |
| | Bette Greene | Frances Haverfield |
| | Inez Grove | Dorothy Hill |
| | Alta Claire Harrison | Helen Jensen |
| | Millicent Jensen | Betty Schunck |
| | Irene Johnson | Mary Margaret Walker |
| | Anna Marie Larson | Mary Ellen Walpole |
| | Marian Preston | Ruth Rance |
| | Ruth Sunderlin | |
| | Lorraine Verstegen | |
| | Jean Anderson | |



Inter-Sorority Council

First Semester

ALPHA SIGMA

Miriam Hawthorn
Janet Coe
Bernice Petronis

KAPPA PI ALPHA

Evelyn DePue
Margaret Gusteson
Bette Greene

KAPPA ZETA CHI

Marjorie Primmer
Margaret Long
Dorothy Ann Olson

Second Semester

ALPHA SIGMA

Bernice Petronis
Janet Coe
Miriam Hawthorn

KAPPA PI ALPHA

Evelyn DePue
Margaret Gusteson
Bette Greene

KAPPA ZETA CHI

Carol Held
Margaret Long
Dorothy Ann Olson

Inter-Fraternity Council

OFFICERS

First Semester Second Semester

| | | |
|---------------------|--------------|----------------|
| President..... | Robert Paget | Leo Smith |
| Vice-President..... | Leo Smith | George Koch |
| Secretary..... | George Koch | Howard Neilsen |

REPRESENTATIVES

First Semester

| | | |
|-----------------|-------------|-----------------|
| ALPHA TAU DELTA | PHI SIGMA | SIGMA THETA RHO |
| H. G. Morrison | Glen Burrow | Robert Paget |
| Lester Menke | Leo Smith | George Koch |

Second Semester

| | | |
|-----------------|----------------|-----------------|
| ALPHA TAU DELTA | PHI SIGMA | SIGMA THETA RHO |
| David Brinkman | Leo Smith | George Koch |
| Garry Wallman | Ilo Vanderboom | Howard Neilsen |



ATHLETICS

MEN'S ATHLETICS



Throughout a long career as head of the Physical Education Department at Morningside College, Coach J. M. Saunderson has built up a reputation as one of the finest and best-known coaches in this territory. Under his direction the sports practices have been classes in character building with the ideals of fair play and sportsmanship uppermost in the minds of the men.



Up and Over the Coyote Line

—Tribune Photo.

Varsity Football

The Maroons opened their 1938 season under the floodlights at Hastings, Nebraska, on September 23, and closed it eight weeks later against Wayne State Teachers on Dad's Day at Stock Yards Park. The Sioux finished in fifth place in the North-Central standings with a record of one win, three losses, and a tie. At Hastings the Sioux outsmashed the highly rated Broncos for 211 yards and 14 first downs to gain a 14-6 triumph. Hetland and Burrow drove through holes opened principally by Buckingham, Flinders, and Turk; these two backs picked up most of the yardage with Flinders distinguishing himself by converting twice.

Fritz Pollard and Company gave the Maroon and White a cold reception and sent them heading back south on the short end of a 27-12 score. However, Morningside gained 12 first downs to seven for the Sioux, and the Maroon forward wall more than matched the Nodak line. But the ebony ace, Pollard, one of the shiftiest runners ever to play in the North-Central, proved to be the difference between the two teams. Three times he snatched the ball, maneuvered into the open, shook off a couple of would-be tacklers and crossed the goal line standing up. Morningside depended on straight football for their two scoring drives. Twice more were the losers within hailing distance of pay dirt, being stopped once by the half-time whistle and once by a fumble.

Kansas Wesleyan of Salina, Kansas, came to Sioux City the following week, and met a Morningside team that was bouncing back from its northern defeat of the previous Friday. Displaying a razzle-dazzle offense the home team rushed the heavier Tigers off their feet. Halford and Burrow each scored in the second quarter and Murphy added one in the third. Engen, playing his first game of the season, converted on the last touchdown to bring the score to 19-0 which was the final score. Cooperating with the smooth working offense was the stellar defensive play of Brinkman, Flinders, and Koch.

In their first home conference game the Morningside gridsters lost a heartbreaker to South Dakota State, 14-13. For the fourth time in four games the Sioux dominated every department of the game, but two lightning-like touchdowns by the Bunnies in the second quarter, plus two conversions, spelled defeat. The Maroons scored first, Burrow cutting back for a counter after a 50-yard offensive drive. In the second quarter, Engler, S. D. S. back, failing to find a pass receiver, picked his way through the scattered players thirty yards for a touchdown. On the next Bunny play from scrimmage, Brill smashed through center, cut back and dashed 70 yards for another counter. With the score 14-6 against them the Maroons fought back viciously with Halford leading a brilliant passing and running attack, but could engineer only one touchdown. Four other times they put the ball in position to score, but each time they were without a big man in the backfield to punch it over. This defeat left Morningside at the bottom of the conference standards, with two losses in as many games.

The Coyotes of South Dakota used their Dakota Day as an excuse to measure the Maroons by a score of 13-0 on windblown Inman field at Vermillion, October 22. For the first and only time during the season, Morningside was on the short end of the statistics. The Redshirts, future conference champions, had everything their own way after they scored their first touchdown seconds before the close of the first half. Until that time the two teams had see-sawed up and down the field, with the Sioux making the only real threat as they drove to the 15-yard line only to lose the ball on downs. A few minutes after the second half began South Dakota scored again, using the same end-around pass that had resulted in the first counter. For the Maroons Buckingham and Brinkman looked good defensively at the end posts.

Before a Homecoming crowd of 5,000 Iowa Teachers' fans the Maroon and White showed a complete reversal of form to run and pass their way to a 13-7 victory over the favored Panthers. The first half was scoreless, but in the third quarter the passing combination of Halford and Morrison began to click and the

BUCKINGHAM



FELKER



ENGEN



MORRISON



BRINKMAN





KOCH



TURK



PORT



FLINDERS



SNYDER

Maroons pushed over two touchdowns. Hetland plunged for the second score after a long pass had put the ball in position. Behind 13-0, the Panthers came back with a flashy attack to score once, and threaten again, but the Morningside forward wall stiffened to prevent another counter. Buckingham, Snyder, and Paget played a bang-up game in the line.

Homecoming fans who hoped to see Morningside better her conference standing at the expense of Omaha U. were doomed to disappointment as the two teams battled to a scoreless tie on a field of icy mud. Again the Maroons threatened several times but couldn't score. One of the outstanding features of the game was the success of the Morningside passing attack, said attack having failed dismally on days much more suitable for that department. With Burrow pitching and Snyder and Brinkman doing some excellent receiving, eight out of eighteen passes were completed during the course of the game. Murphy did some nice line-bucking, and Flinders and Hakala were outstanding in the line.

The Dad's Day game with Wayne dropped the curtain on the Maroon's season. The long punts of Bradford, Wayne back, served to keep the Sioux away from scoring territory most of the afternoon, but the Maroons took advantage of a break and moved to the four yard line in the second quarter from where Hetland scored. Late in the final period, big Russ Kraai entered the game. Exhibiting that kind of powerful line plunging that had been sorely needed at times during the season, he engineered a drive that shoved over another touchdown just seconds before the final whistle.

Perhaps the season wasn't the most successful in the annals of Maroon football history. There were a few high points, however. Once and only once did Morningside leave the field with the statistics against them. Perhaps the breaks were against them; perhaps they lacked the indefinable something that makes the difference between a good team and a fair one. Whatever it was, they lost games that were hard to lose. Time and again they outfought and outplayed the opposing

team only to be on the short end of the final score. In spite of this the players, individually and as a team, gave all they had in every game. In both the North Dakota and the South Dakota State games, when it appeared that Morningside was badly beaten, they fought their way back to score and turn each contest into anybody's ball game. If there is something more to a football season than a final won and lost reckoning then the 1938 Maroons achieved it.

Eleven men finished their collegiate football careers when the whistle signalled the end of the Morningside-Wayne game and the close of the 1938 season. Al Buckingham, all-conference end, leads the group who will receive their diplomas in June. "Buck" has played three years of football under Saundy and has received all-conference recognition two of these years. Opposing quarterbacks sent few plays around Buck's end.

Dale Flinders has been an outstanding tackle on the squad this year. His first two years he played at a guard post. Dale was placed on the second all-conference team this fall. Occupying the other tackle post has been big Bob Paget. Bob has been a regular for two years, and opposing ends have found him big and tough.

Dave Brinkman came up fast to develop into one of Saundy's most aggressive ends. Dave loves the game and he was an outstanding performer all season, playing one of his best games against South Dakota U. Don Snyder is the best pass receiver on the squad. Possessing an uncanny ability to snag any toss, high or low, Don was in his glory when the going was roughest. In the Omaha game he grabbed pass after pass with the ball just a slippery blob of mud.

Jake Felker was one of the smallest men on the squad, but one of the toughest. A "watch-charm" guard, Jake never asked for quarter, but always came out of the pile with a word of encouragement for the team. Fred Hoffman graduates after having been with us for only two years. A transfer student, Fritz has had two seasons at a guard post, where he has gained recognition for his aggressive play. Joe Turk, another transfer student,



PAGET



BURROW



HAKALA



HALFORD



KRZNARICH



HETLAND

stepped into a big job when he became the center on the Morningside team, for Morningside has always seemed to have a corner on the best centers. Joe carried on in the finest way, winning two letters and playing heads up ball always during the two seasons he has been with us.

Owen Engen, H. G. Morrison, and Russ Kraai are the three senior backfield men. "Blondie" Engen was the workhorse of the men who work behind the line. Injured at the first of the season, Owen played most of the games in spite of it. His was the unheralded job of blocking for the ball luggers and few have done better. Owen has also been at Morningside just two years, being a transfer student from Minnesota.

Outstanding as a freshman, H. G. Morrison has been developing under Saundy's tutelage for three seasons and he played his finest ball this season. Probably his outstanding performances were in the two games with Iowa Teachers the last two seasons. He sparked the final-quarter drive that netted two touchdowns and a 13-13 tie with the Panthers last year, and he was at his best against the same team this year.

Russ Kraai, a transfer from Orange City Junior College, is big, fast, and a powerful fullback. Dogged by hard luck, Russ broke his arm and was confined to the sidelines most of his first year. However, he came back fast and saw action at the end of the season and this year developed into one of the hardest hitting fullbacks Morningside has had.

We will miss these eleven men—these eleven seniors who have given much to Morningside. They have proven themselves to be "for Morningside" and they will as staunchly support her as alumni as they did defend her laurels on the gridiron.



Three Maroons in on This Tackle.

—Tribune Photo.

FROSH FOOTBALL



Top Row: Feikema, Ballantine, Haenfler, Spiry, Leopold, Kennedy, Harvey, Kolp, Widler.
Bottom Row: Connor, Heitman, Triggs, Bliss, Lewis, Thompson, Reese, Goodenow, Sheridan.

Twenty-five men answered Honie Rogers' call for freshman footballers and the first-year men began preparations for three tough games against Estherville Junior College, South Dakota University frosh, and the Omaha University first year men. The backfield boasted of such stars as Joe Lease, Gene Kennedy, Don Leopold, Al Haenfler, Bob Harvey, Eddie Lamkin, Earl Hicks, Cliff Lewis, Walt Baumann, and Danny Sardison, while bolstering the frontline were the following standouts: Chuck Sheridan, Don Widler, Ollie Heitman, Red Bliss, Tommy Thompson, Orval Spiry, Bernie Feikema, Bob Reese, Les Triggs, Earl Goodenow, Wally Hanson, Bob Sharp, John Kolp, and Bruce Connor.

In their initial game the yearlings scored a last-minute victory over the more experienced Junior Collegians from Estherville. Two weeks later the yearlings lost to the Coyote Pups of South Dakota U., 12-8. The Pups scored on their now famous end-around pass play. Kennedy's passes, Haenfler's driving plunges, and a trick lateral forward combined to score for the yearlings, but in the final quarter the Pups put on another drive which won the game for them. The frosh ended their season with a 6-6 deadlock with the Omaha University first-year men on a wind-swept Omaha gridiron.



No Hole in This Line.

—Tribune Photo.

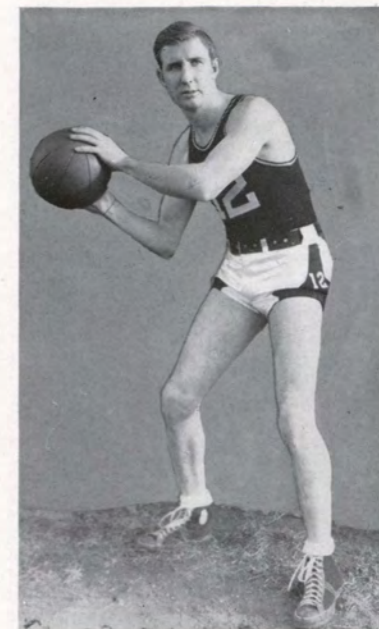
Varsity Basketball



Another successful year under the tutelage of Coach Glen Rogers has been added to the Morningside basketball records. Although his team did not come up to the championship play of last year's team, they demonstrated the power and clever ball handling characteristic of the Maroons.

Sixteen men answered Coach Honie Rogers' early season call, and with this squad he undertook the difficult task of defending the North Central championship gained last year. Only three lettermen remained from that team of champions, and with these as a nucleus, Honie developed a team that enjoyed a much better season than early prognostications would have foretold. While the Maroons were forced to be content with fifth place in the conference they gained victories over several highly rated teams, including North Dakota and Iowa Teachers, who finished in a tie for second position. The North Dakota game was the first time that the Northerners had been defeated in a home court conference game in eight years and the first time that the Morningsiders had ever taken a basketball victory at Grand Forks. Besides whipping the runners-up, the Maroons took the measure of South Dakota State who finished the season in fourth place just above the Sioux Cityans. At one time during the early part of the season, the Sioux stayed on top of the conference race for two weeks. But they couldn't keep the pace and costly defeats were suffered, defeats that, had they been victories, might have given the team the necessary spark to climb back into the title race.

The Maroons opened the season with five non-conference games, winning the first two and dropping the following ones. Surprising the strong Alumni aggregation, made up mostly of last year's players, Morningside gained a 36-23 win. Yankton College came to Sioux City the following week and made it a close game for the first half before weakening in the following stanza and dropping the contest to the Maroons 36-22. Sioux Falls won a



LOFF



SNYDER



HALFORD



BUCKINGHAM

thrilling pre-vacation game as they took the measure of the home team by a count of 24-22. A basket in the closing seconds by Morningside failed to count and the Sioux dropped their first game of the season. Playing basketball that was far from conference championship style, the Maroons lost both games in their Invitational Tournament, and as a result they finished in last place. Ottawa University of Ottawa, Kansas, tripped them the first night 31-28, and Cornell College of Mount Vernon, defeated them 27-16 in the final game. Ottawa went on to win the tournament by whipping South Dakota U. who had beaten Cornell the first night.

The Maroons opened the conference season with a stunning victory over the highly favored Iowa Teachers from Cedar Falls. Starting the contest in a listless fashion, the Morningside team suddenly came to life and overcame a 12 point deficit to win handily 48-34. Immediately the other teams in the conference pointed towards Morningside as the team to beat. In this first game Michaelson poured in 18 points to take up his high powered scoring where he had left off last season.

Omaha University was the next victim to fall as the Maroons, riding atop the conference standings, swept over the Cardinals by a margin of 44-34. Michaelson again was top scorer as he dumped eight fielders and three free throws through the hoop for a 19 point total. Don was ably assisted by his teammates led by Dewey Halford who played a sparkling game at a forward post.

South Dakota was the next opponent and the pair of games played with the Coyotes proved disastrous to the Maroon title hopes. The first game, at Vermillion, began with a Morningside

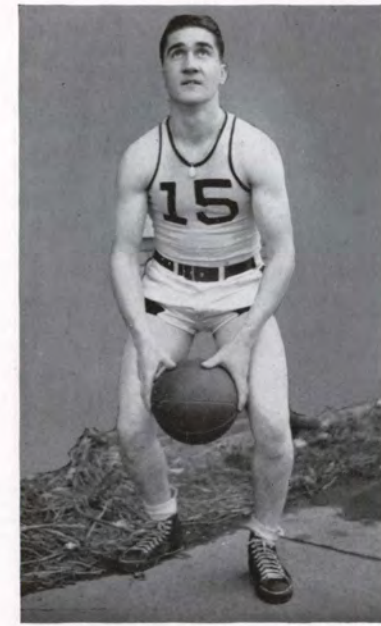
flourish, the Sioux Cityans jumping into a seven point lead. From this point on Maynard Ingalls and Company took complete charge and the Redmen won 39-27. Loff and Michaelson each gathered eight points for the losers. The following week the Coyotes invaded the home court and swamped the Maroons 41-19. Morningside led only once in a game that was South Dakota's all the way. The victors demonstrated that they had other luminaries besides the much publicized Ingalls, as nine men besides himself broke into the scoring column, Taplet taking honors with six points. Dewey Halford dropped five points for Morningside.

Boasting only a .500 per cent conference rating, the Maroons left Sioux City for a two-game trip in North Dakota. Fans gave them little chance to gain even one victory on the suicide trek. Upsetting all the dope, the defending champs overwhelmed the powerful Sioux of North Dakota University, outfighting them all the way. Dewey Halford hit from all angles to garner 17 points, but the whole Morningside team starred. The following night the Maroons lost a listless game to North Dakota State 44-23. Showing the effects of the three-day trip and the hard game the night before, the Morningsiders were no match for the Staters who played their best game of the season. Loff, Michaelson, and Strozdass looked best for the losers. This defeat left the Maroons with a .500 per cent rating and three games yet to go. The second place South Dakota State Bunnies were the next opponents.

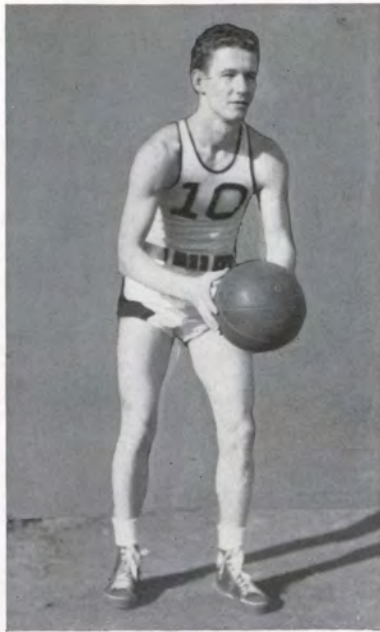
Don Snyder, star senior guard, dropped a basket with seconds to go to pull a close one out of the fire and drop South Dakota State, 35-33. South Dakota took an early lead only to lose it as Halford and Michaelson started hit-



STROZDAS



KRZMARICH



ROADMAN



MICHAELSON

ting. The Bunnies came back into the lead late in the second half to overcome a five point deficit and forge into the lead late in the third quarter. From then on it was anybody's game, with Loff hitting a hot streak, only to be matched by the deadly firing of Fergen, stellar Bunny guard. With the score tied South Dakota got a flurry of shots in the closing minutes, before Snyder grabbed one off the backboard and dribbled the length of the floor to sink it. This win boosted the Maroons into second place and bolstered their hope for a high place in the final standings.

The Cardinals of Omaha University severely jolted these hopes as they pulled a 32-21 upset victory over the Maroons at Omaha. The game was fairly close until the final quarter when the Cards ran wild. Pflasterer and Marks got ten apiece for the winners while Michaelson and Kraai each counted five for the losers. A slim chance for the runner-up spot still remained after this game, but even this possibility was blasted three days later by the Iowa Teachers in the finale at Cedar Rapids.

The first half of the Teachers' game was close with the Tutors holding a 15-10 half-time margin. The second half, however, turned into a riot as the two Teachers' forwards, Lofquist and Olsen, set a torrid pace. The Morningside scoring was evenly divided, with Halford and Loff leading with six and four points respectively. Morningside's difficulty was entirely due to inability to hit the basket. The losers got almost as many tries as the Tutors but managed to hit the hoop but 6 times in 66 tries. Buckingham did a good job of filling Snyder's shoes—Don being kept on the sidelines because of a severe attack of the flu.

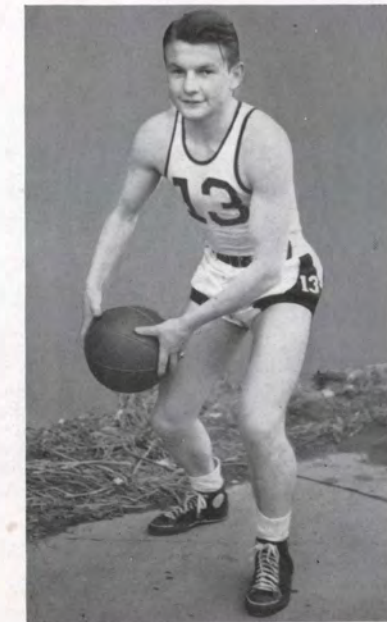
Two members of the Morningside team gained positions on the coaches' All North Central team. They were Don Michaelson, who was chosen on the first team last year, and Don Snyder, who made last year's second squad. Michaelson bore much of the scoring burden of the team this year and as a result many opposing teams built their defense with the purpose of stopping him. This accounted for the fact that Don scored less toward the end of the season than he did at first. Don Snyder is well known for his defensive ability and spirited play. He broke into the lineup in many games during his sophomore year and for the last two years has been a regular guard.

Five seniors finished their college basketball careers with the Teachers' game. Russ Kraai played two years for the Maroons, coming here from Orange City Junior College. Russ is big and aggressive and particularly effective under the basket. Don Snyder and Al Buckingham played as guards on this year's squad. Both are three year veterans. Snyder for two years received all conference honors while Buck was given recognition this year on the all conference honorable mention roll. Buck probably scored more for the time he played than any member of the squad. Kept out of the lineup at the first of the season by injuries, he averaged nearly a half in all the conference games during which time he never failed to drop in a bucket or two. H. G. Morrison and Keene Roadman were used in the front line this year. H. G. was a small but aggressive player noted for his drive and determination.

With four regulars back—Michaelson at center, Loff and Halford at forward, and Strozdas at a guard post, and with a wealth of freshman material coming up, Morningside's Maroons should enjoy a successful and a winning season next year.



KRAAI



BROWN

Frosh Basketball



Top Row: Hanson, Langstaff, Sheridan, Jones, Spiry.
Bottom Row: Graham, Harrison, Sharp, Cobb, Adcock.

While they did not compile the most impressive record in freshman basketball annals, this year's yearling team was one of the best in recent years. Thirty-five aspirants answered Coach Hugh Luby's first call and from these were chosen the following men who bore the brunt of the season's play: Sharp, Adcock, Langstaff, Nagel, Harrison, Graham, Lease, Macur, Cobb, Spiry, Sheridan, Goodenow, Jones.

Their schedule included games with Metz Bakers, Orange City Junior College, South Dakota University Pups, and the Omaha University freshmen.



Track

Although track is listed as a major sport at Morningside, it has never held the spotlight as it did in the days of the famous Four Horsemen. Nevertheless, outstanding men in certain individual events have been developed under the tutelage of Coaches Saunderson and Rogers. Dave Denny, ace hurdler, was the only returning letterman this year, but he was ably supported by several promising sophomores.

"M" Club



Top Row: Halford, Kraai, Adams.
Second Row: Koch, Michaelson, Hakala.
Third Row: Port, Krzmarich, Loff, Strozdas.
Fourth Row: Felker, Burrow, Hetland, Denny, Engen.
Fifth Row: Turk, Buckingham, Paget, Snyder, Flinders, Morrison, Brinkman.

For thirty-one years the "Men of the M", a group in which all varsity letter winners are members, has been an active organization on the campus. In an effort to create leaders as well as to develop physical strength, the "M" Club has complete charge of all Freshman-Sophomore Day events and of the Homecoming parade.

The club was guided in its activities during the past year by Don Snyder, president; Pete Burrow, vice-president; and H. G. Morrison, secretary-treasurer.



Porter, Wallman, B. Perrin.
L. Brown, K. Brown, Boline, T. Perrin.

Cheer Leaders

M-O-R-N-I-N-G-S-I-D-E—Yea, Morningside—! To a squad of seven cheerleaders captained by Bob Perrin goes much of the credit for the fine cheering sections which characterized all the home games. Costumed in the traditional maroon and white, the squad made a striking appearance on the field and on the floor and added pep and color to the excitement of the football and basketball seasons. The group was composed of Virginia Boline, Lillian and Kathryn Brown, Thuma and Bob Perrin, Garry Wallman, and Maynard Porter.

Intramural Program



Independents, Touchball Champs



Sig Rhos, Basketball Champs



Over the Fence

Three events of a seven sport Intramural program have been completed and two tournaments are being played as the Annual goes to press. Thirteen individual medals and two trophies have been or will be awarded to the champions in the various events. Tennis and touchball dominate the fall intramural schedules with basketball and bridge taking over during the winter months; kittenball, ping pong, golf, and spring tennis following in the spring. Dale Harter captured the singles title, and Fred Davenport and Dick King the doubles title, in the fall tennis matches.

The Independents copped the touchball title by defeating the Sig Rhos, 13-0. Members of the winning team are Denny, Buckholz, Pruehs, Clare, Harrison, Roadman, and Cobb. In the basketball tournament the Sig Rhos fought an uphill battle to win in the play-offs. In the final contest the fraternity men beat the Independents 32-21 to gain possession for one year of the Dwight Hauff trophy, which goes permanently to the team first winning it three times.

In the bridge tournament the title will be decided as Anderson and Schiller meet Hughes and Forbes in the final round. Both teams won three hard matches to gain the finals. Forty students are entered in the three divisions of the annual ping pong tourney, namely, the boys' singles, the girls' singles, and the mixed doubles. This is the most popular and most evenly fought event in the Intramural program.

Six teams submitted entry lists for the kittenball season which got underway following spring vacation. Each of these teams was gunning for the title held by the Phi Sigs. To the eventual winner went the Olson Sports trophy for one year. This cup is permanently given to the team that wins it three years. The four standbys, the Phi Sigs, Sig Rhos, Tau Delts, and the Independents entered teams as did two new backers, Don Ballentine's Foo Goo Foes, and Feikema's Tyler's Boarders.

On the schedule, but as yet unplanned, are the two remaining Intramural sports, golf and spring tennis. Keene Roadman and Al Strozdias compose this year's Intramural Board.



Lining Up a Long One



Two Paddle Artists



Harter and Davenport

WOMEN'S ATHLETICS



—Kick It!

Women's Athletic Association



Under the direction of Miss Lois Jessie Brinkman the Women's Athletic Department has completed another successful year on the campus. Her enthusiasm, fairness, and skill in all sports have proven her an able instructor, a true friend, and an excellent leader.

The W. A. A. Board which controls the women's sports program was composed of Bonnie Jean Wallen, president; Dorothy Nelson, vice-president; Virginia Allen, secretary; Joyce Weed, treasurer; Patricia Warner, hockey chairman; Barbara Forrester, basketball chairman; Winifred Cheely, individual sports chairman; Darlene Cottingham, social chairman; Mildred Wikert, awards chairman; Frances Forsberg, publicity chairman.

All intramural and interclass tournaments are sponsored by the W. A. A. in an



W. A. A. BOARD
Standing: Allen, Weed, Wallen, Robinson, Forsberg.
Kneeling: Wikert, Cheely, Warner.

Hockey



Upper-Classmen



Zet Team



Honor Players

effort to bring out the ideals of good sportsmanship and to create and develop an interest in the various sports. The annual four seasons of sport was opened by the hockey season which continued until snow covered the dorm field. The Zets defeated a hard-fighting Ishkoodah team in the sorority finals by a score of 4-2, while the freshmen lost a close battle to the upper-classmen in the finals of the class tourney. The honorary players selected at the close of the season on the basis of ability and sportsmanship were Bonnie Jean Wallen, Lillian Brown, Alberta Seavey, Dorothy Ann Olson, Barbara Forrester, Joyce Weed, and Kathryn Brown.

The second annual swimming meet sponsored by W. A. A. was enthusiastically greeted by the entire school. The evening's program consisting of individual and team events of speed and skill was interspersed with comedy, the whole providing much entertainment for both spectators and participants. The individual awards were won by Nancy Kingsbury and Bob Harvey; the team trophies became the possessions of the Kappa Zeta Chi sorority and the Sigma Theta Rho fraternity. A style show of the bathing costumes from grandmother's time up to the present day, and a demonstration by the Senior Mariners were features of the evening.



Kingsbury



Zet Swimming Team



Harvey

Winter Program



The winter dance festival, sponsored annually by the W. A. A. under the direction of Miss Brinkman, this year followed the theme "Coming Home for Christmas" by showing the different ways the various countries celebrate the Christmas spirit by means of the dance: it was effectively climaxed by two excellent examples of the modern dance.

Basketball proved to be the most successful and popular season of the year with keen competition in all the games. The Zets came through undefeated to win the round-robin sorority tournament while the Seniors' dark-horse team surprised everyone by winning the class tournament. Members of the Zet team were: Virginia Allen, Joyce Weed, Nancy Kingsbury, Alice Scott, Lillian Brown, Winifred Cheely, Mildred Wikert, Connie Gall, Barbara Forrester, Shirley Wallen, Dorothy Ann Olson, Bonnie Jean Wallen, Nancy Lowry, Myna Nickum, and Alberta Seavey. The senior class team consisted of Marjorie Primmer, Barbara Forrester, Lillian Brown, Mary Stankiewicz, Alberta Seavey, and Ruth Worrell.

The climax of the basketball season is the annual Yale-Harvard game. The two teams are selected on the basis of playing ability, sportsmanship, and all-college spirit by the class captains, the basketball chairman, the president of W. A. A., and Miss Brinkman. The game, played March 22, was one of the best games ever played on the campus, both teams showing good teamwork and sportsmanship. An honorary team consisting of Joyce Weed, Virginia Allen, and Barbara Forrester, forwards; and Lucille Locke, Darlene Cottingham, and Shirley Wallen, guards, was selected to give recognition to the best players on the two teams.

The volleyball and softball seasons had not been completed at the time the Annual went to press.

Yale Harvard



Lowry, Locke, Seavey, Allen, Wallen, Perrin.



Brown, Borland, Weed, Cottingham, Kingsbury, Forrester.
—Tribune Photo.

Two members of W. A. A., Joyce Weed and Shirley Wallen, were sent as delegates to the National W. A. A. Convention held in Berkeley, California, on April 12, 13, and 14.

On May 6, the annual "Play-Day" under the sponsorship of W. A. A. was held on the campus. Senior girls from one hundred high schools in the territory were invited to take part in a day of play and fun which was climaxed by a banquet at the dormitory.

The May Fete, presented annually by the members of the physical education classes, was held during Commencement Week on the night of May 27.

Sweater Winners

The highest honor which the Women's Athletic Department can confer upon a girl is the sweater award—a symbol of good sportsmanship, leadership, service, scholarship, and active participation in sports. Those winning sweaters this year were Bonnie Jean Wallen, Miriam Hawthorn, and Lillian Brown.



Hawthorn, Wallen, Brown.

HEALTH WEEK



Flinders, Worrell.
Pawson, Lowry, Olsen, Kolp.

During Morningside College Health Week, which was held March 20 to 25, the importance of good health was stressed by W. A. A. Twenty good-posture tags were awarded in Monday chapel to the following: Connie Gall, Doreen Dallam, Evelyn DePue, Ruth Kingsbury, Helen Osbey, Dorothy Ann Olson, Ruth Olsen, Helen Pearson, Marian Walsh, Ruth Worrell, Scotty Allison, David Denny, Bernard Feikema, Dale Flinders, DeLos Hartwig, Bob Harvey, Perry Kruidenier, William Rozeboom, Dan Sardeson, and Packard Wolle.

At Wednesday Chapel Reverend W. R. Moore spoke on "Mental and Spiritual Health".

To climax the week, the identity of the Health King and Queen was revealed at an all-college dance Saturday night. The basis on which these students were chosen was similar to the 4-H requirements. This year the king and queen were Dale Flinders and Ruth Worrell; their attendants were Nancy Lowry, Richard Pawson, Ruth Olsen, and John Kolp.



FEATURES



Miss Morningside

With all the pomp and solemnity necessarily attendant upon such an occasion, lovely Marjorie Primmer was revealed as "Miss Morningside of 1938" at the Pep Chapel on November 4. Marjorie is a member of the Kappa Zeta Chi sorority and is president of Agora. She reigned over the Homecoming festivities which included the annual barbecue and pep-chapel, the snake-dance, and the Homecoming dance which was held in the Alumni Gym.

ALL FOR



Carol Held

"A beauty with brains" is an adequate characterization of Carol who has won many honors during her college career, among them being the presidency of her sorority and the secretaryship of the Student Council.

MORNINGSIDE



Albert Buckingham

Athletic ability and executive responsibility rest equally light on the shoulders of as capable a person as Albert Buckingham. Buck's friendliness and his contagious grin have won him a permanent place in the hearts of the student body for whom he acted as president this year.

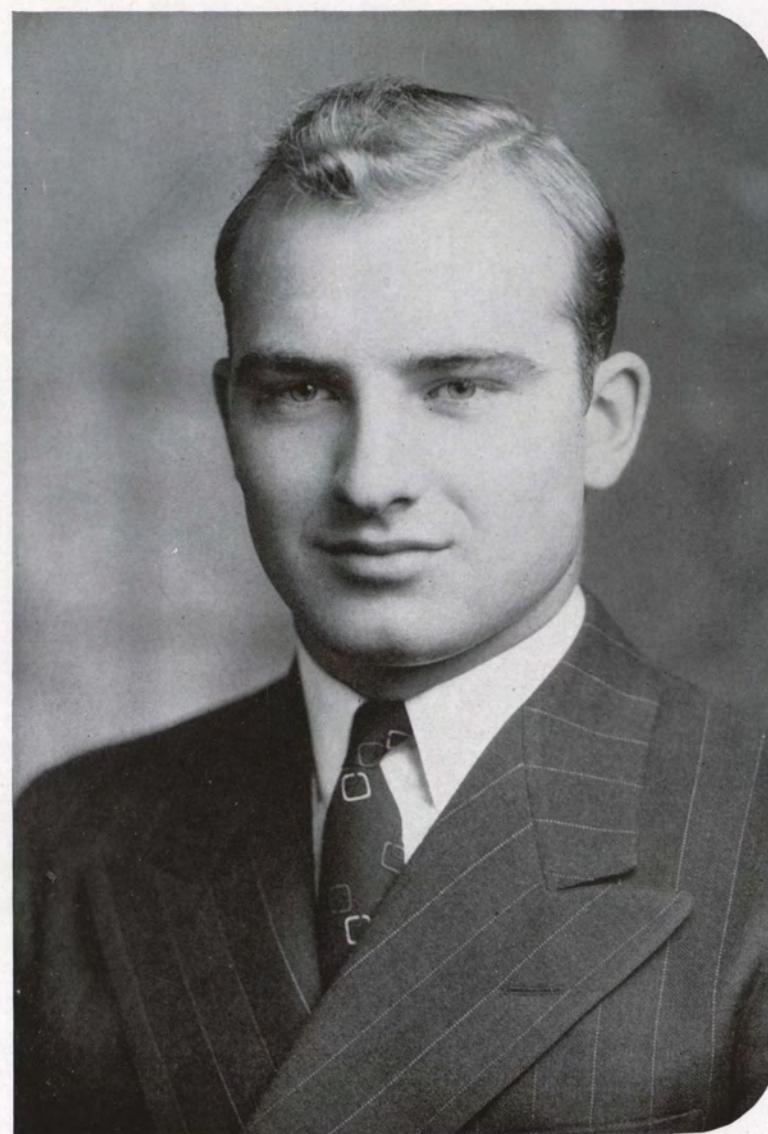
ALL FOR



Marjorie Primmer

Marjorie's gracious reception of two coveted senior honors, the presidency of her sorority and selection as "Miss Morningside", was a fitting climax to a college career of active participation in social and scholastic affairs.

MORNINGSIDE



Dale Flinders

An athlete with a golden voice—add intelligence to these two qualities and the result is Dale Flinders. Morningsiders will miss Dale's genial personality and happy smile when he graduates.

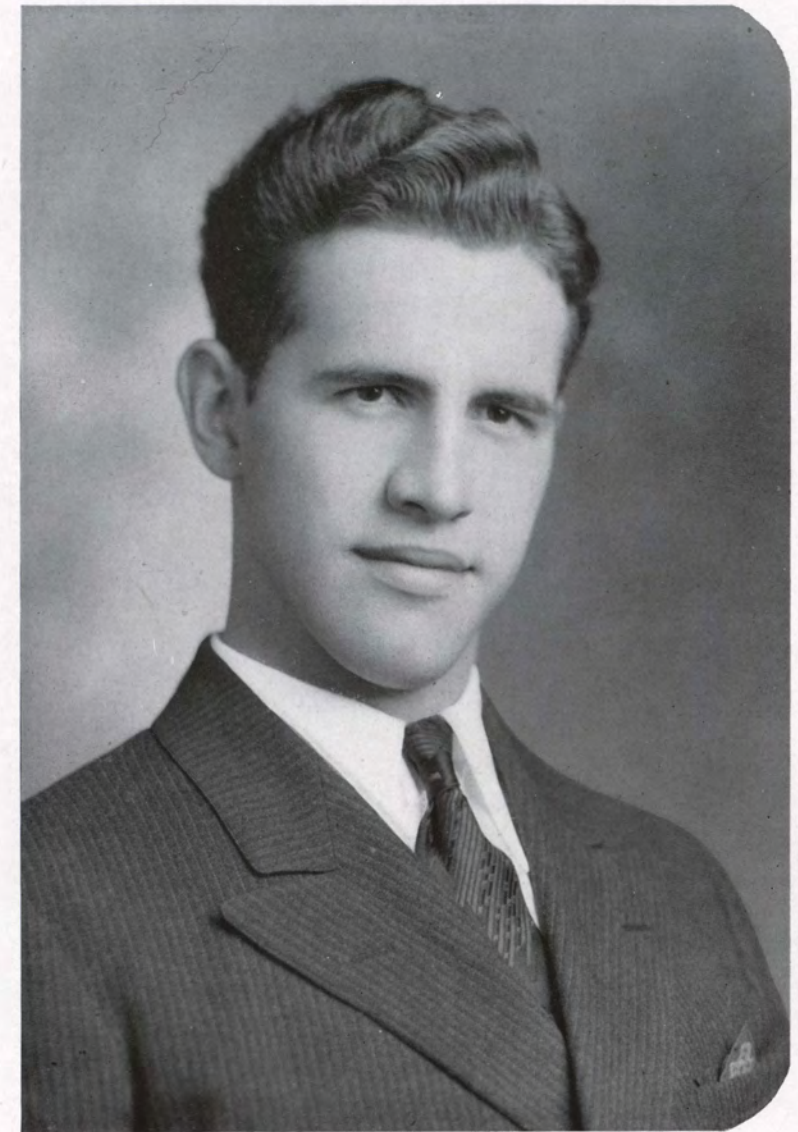
ALL FOR



Miriam Hawthorn

A budding young poet in our midst is Miriam Hawthorn. Her works have appeared in college publications and in literary magazines. She has also taken an active part in athletic and sorority affairs.

MORNINGSIDE



Robert Rohwer

Bob is Morningside's premier gentleman and scholar. Active in forensic and musical circles, he has maintained an excellent scholastic average throughout his four years in school.

SIOUX QUEENS



EVELYN DEPUE, CAROL HELD, DOROTHY ANN OLSON

Chosen by popular student body vote, these three girls combine the ideals of personality, intelligence, and beauty; true queenly qualities.

STUDENT UNION



—Tribune Photo.

One of the most popular places on the campus is the new Student Union Room on the third floor of Main Hall. Furnished with red leather and blond maple furniture, the Union has been a source of many enjoyable hours of relaxation and comradeship for all the students.

WOMEN'S LOUNGE



—Tribune Photo.

A room done in orange and tan leather with attractive drapes and reading lamps has been provided for the women of the college on the first floor of Main Hall. Here the girls may come to study or to chat with their friends; the only restriction is "No Boys Allowed".



THE COUNCIL OAK STORES

Your Friend at Mealtime

IOWA :: NEBRASKA :: SOUTH DAKOTA :: MINNESOTA

CALENDAR

SEPTEMBER

- 12—New freshmen arrive to start the four-year grind. Park Theatre party—girls have escorts home.
- 16—Classes begin at 8:00. No new shoes—books are higher!
- 23—Sorority rushing gets under way—and is it rushing!
- 25—New home, new paint, new semester, another Open House—Tau Deltas. Mosquitoes give M. C. A. retreaters a royal welcome at Stone Park.

OCTOBER

- 3—W. A. A. picnic for freshman girls—transportation provided.
- 5—Freshman-Sophomore Day. Frosh must wear green caps until Thanksgiving. Double Cane Rush (the first one was too

- tame!) Ole Floyd a bit muddy, fellows?
- 7—Formal social season opened by the Faculty Reception. You *can* meet other people, you know.
- 19—Dormitory tea for Sioux City girls. Orange sherbet, uum-mm-m!
- 21—Pilgrimage to Vermillion. The game wasn't good, but oh, that train! We'll get that pelt next year, Professor Van Horne.
- 28—Dr. Roadman wearing his maroon shirt—Corn Hunt has started.

NOVEMBER

- 2—One concert well attended. Reason: Lawrence Tibbett.
- 5—Homecoming! "Prim" lovely as Miss Morningside. Weather not so lovely. Football team made mud-pies on the field. Gym was dry, so we had a dance, anyway.

Keep Youthful
with Dairy
Products



MILK DEALERS
OF SIOUX CITY

HARRY H. ADAIR PAUL A. WARNER

Adair - Warner
Printing
Co.

Printing with Service

Phone 8-7831

516 Sixth St. Sioux City, Iowa



SECURITY
NATIONAL BANK
 of Sioux City

F. D. I. C.

CALENDAR—Continued

- 19—Dad's Day! They watch us play football and dance—and see where their money goes.
- 22—The dorm goes Mexican at the Turkey-day formal.

DECEMBER

- 1—Pre-Engineers Night after the ball game. "Fire-Bug" is on the market!
- 3—The "Snow-Ball"—Who said what about corsages?
- 13—Another Winter Festival—learn the Lambeth Walk from Pitchett.
- 14—Where are the movie scouts? "Holiday" was an excellent show.

JANUARY

- 8—Dan Cupid was about two months ahead of his regular schedule. Look at the co-eds who came back with diamonds—Virginia

Allen, Dorothy Carlson, Virginia Thomas, Mary Margaret Walker, and Bette Greene.

- 16—Angna Enters tonight. Did we hear comment?

- 21—Choir leaves on tour—Lewton, Held, and Primmer got the loveliest going-away presents.

- 23—Midnight oil did no good. The exams were really tough.

- 27—Choir sings over N.B.C. Guess we're famous, now.

FEBRUARY

- 2—S. D. U. basketball game. Packed house and disappointment.

- 4—W. A. A. swimming meet. A splashing good time was had by all.

- 7—New Outlook Days! Is this a college or a billboard?

MIDWEST COLLEGE
OF COMMERCE

The Dependable School for Commercial Training

SEE US NOW

400 Commerce Building
Sioux City, Iowa

EVERYTHING FOR PROGRAMS
 PLAYS
 PAGEANTS
 READINGS
 OPERETTAS
 STUNTS

WETMORE
DECLAMATION BUREAU

1631 South Paxton Street
SIOUX CITY, IOWA

ODDITIES!



1939 SIOUX

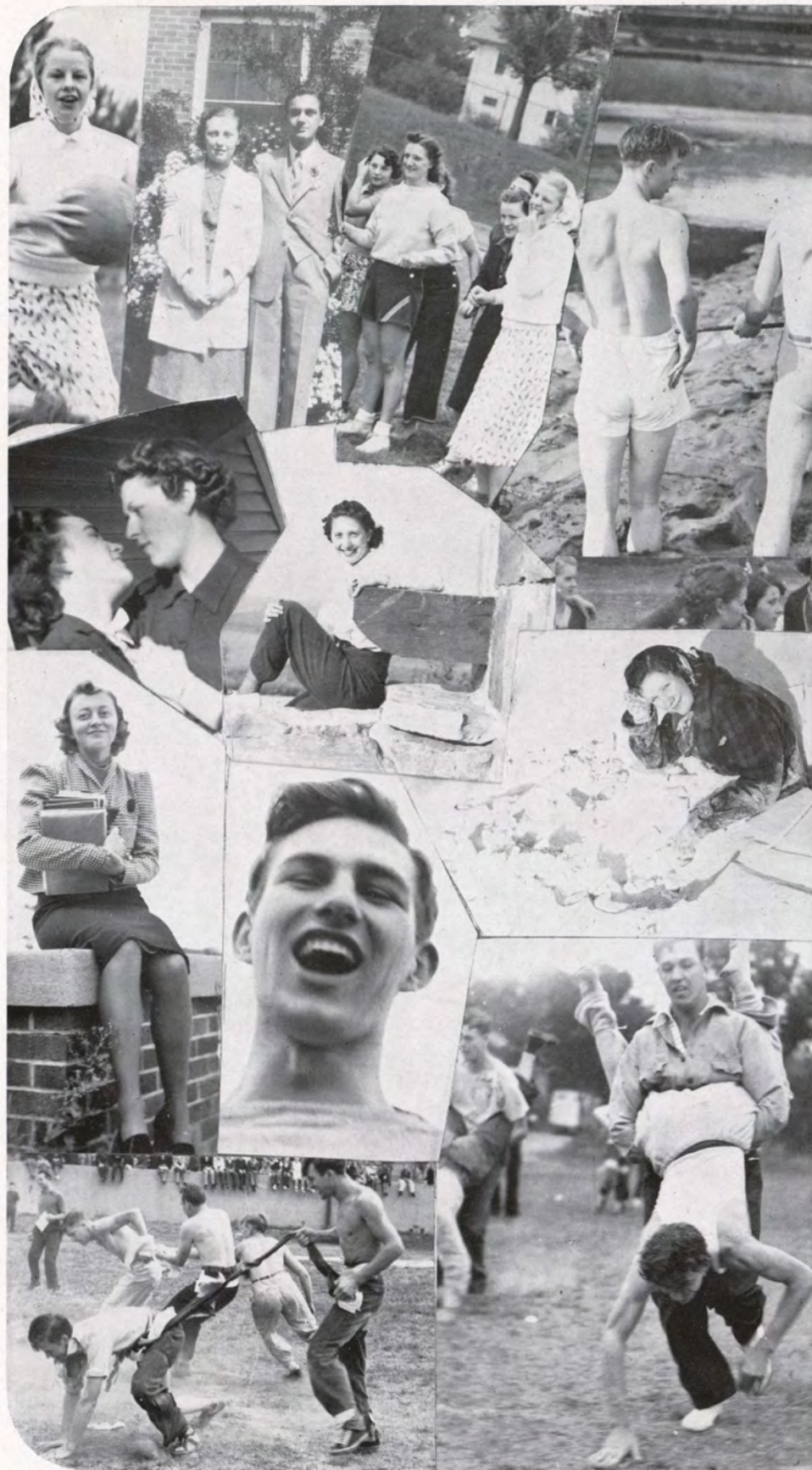


VERSTEGEN
PRINTING COMPANY

•
SIOUX
CITY
IOWA

Builders of
Planned School Year Books
Since Nineteen Hundred
Eighteen

1939 SIOUX



MAKE

Member F. D. I. C.

THE TOY NATIONAL BANK

YOUR BANK

Intelligent and Conservative Banking Since 1873

CALENDAR—Continued

- 21—Choir concert. Why don't more people realize what an excellent choral group we have in our choir?
- 24—FREE college party. More fun! Didn't know so many people liked to play badminton and shuffleboard.

MARCH

- 3—M. C. A. roller skating party. Again transportation is provided—what is this school coming to?
- 7—Student Union Room dedicated. It is really a swell place—now we can study in the library.
- 22—Yale-Harvard game. Those girls could give the Maroons a run for their money.
- 25—Dean Johnson's secretary and Songbird Flinders reign as Health Monarchs.

APRIL

- 10—Weed and Wallen in California. Bet they give the World's Fair a going-over.
- 17—Back to the old grind after the Bunny holidays.

MAY

- 6—Senior girls from high schools invade the campus for Play Day.
- 12—Annual Mother-Daughter banquet.
- 19—Senior farewell dance. Congrats to the Sioux Queens.
- 27—May Fete. Oh, those modern dances!

JUNE

- 5—Commencement. College days are just memories to the graduates!

**May You Find the
Rainbow's End**

As you journey through life, we hope it will be your good fortune to find the rainbow's end, and with it the fulfillment of all your cherished desires.

SIOUX CITY GAS & ELECTRIC CO.



Youngberg

STUDIOS

THIS ANNUAL and nearly all preceding annuals in the past thirty-five years have been illustrated by photography produced by Martin Youngberg. We believe that this is proof of the popularity of this modern and highly equipped studio.

Youngberg Studio

615 Pierce Street
 (Williges Furrier Building)



**FORGET
SUMMER
HEAT**



**TRAVEL
BY COOL**

AIR-CONDITIONED SUPER-COACH

Plan your trip to the World's Fair or to other vacation spots this summer by cool air-conditioned Interstate Super-Coach, and travel in luxurious comfort. The trip by bus will be a sightseeing tour all the way—and you'll save a pocketful of money on your ticket! Ask your local agent about convenient schedules, low fares, and Expense-Paid Tours.

DEPOT
Fifth and Douglas
Local Phone 5-7678



INTERSTATE TRANSIT LINES

KODAKS

Developing and Printing
HOME MOVIES

Eastman
Kodak Stores, Inc.
608 Pierce Street
SIOUX CITY



Woodbury County
Savings Bank

Beuttler & Arnold
Architects and Engineers

Specializing in Planning
Public Buildings

Phone 5-5374

450 Insurance Exchange Building
Sioux City, Iowa

**DIXSON'S
PHARMACY**

*Iowa's Finest Suburban
Drug Store*

AT

PETERS PARK



From the Four Corners
of the Earth
Twenty-four Hours a Day

. . . comes the latest news in the field of
foreign affairs . . . politics . . . sports . . .
local and state news . . . editorial comments . . . news from Wash-
ington by world famous political analysts! All brought to you hot
off the wire so that you may be constantly abreast of the times!
For news when it is news read . . .

The Sioux City Journal

. . . Sioux City's Largest Circulated Newspaper . . .

The Favorite Candy of the Northwest

LA FAMA CHOCOLATES

One of a Family of Famous Products

Made by
JOHNSON BISCUIT COMPANY
SIOUX CITY, IOWA

COMPLIMENTS

FIRST NATIONAL BANK
IN SIOUX CITY

FERRIS FLORISTS

Flowers for All Occasions

Telephone 8-7505

Warrior Hotel Sioux City, Iowa

BETWEEN CLASSES . . .

DRINK

Coca-Cola

IN BOTTLES

*It's the Refreshing
Thing to Do*

CHESTERMAN CO.

HOUSE OF HAMBURG

Fitze's prices
Fit the purse.
Fitze's food is
Quite the nertz.

DWIGHT HAUFF SPORTING GOODS CO.

Agent for

A. G. SPALDING & BROS.

ATHLETIC EQUIPMENT

"For Fairways and Allways, Say Spalding"

511 Pierce Street

Sioux City, Iowa

FRANK'S CAFE

Lady cooks have a style of cooking which appeals to our restaurant-going public. The food tastes like a home cooked meal and that means a lot.

GLASS FRONT

607 Pierce Street Sioux City

**J. C. RENNISON
FLORAL CO.**

516 Nebraska Street
SIOUX CITY, IOWA

WIRE FLOWERS ANYWHERE

"Say It with Flowers"

"Quality Shoes"

F & C

"COAST TO COAST"

The Feltman & Curme

Shoe Stores Co.

Incorporated

507 Fourth Street
SIOUX CITY, IOWA

BEN FRANKLIN STORES

4006 Morningside Ave. Peters Park

"Your Dime Store at Peters Park"

Everything from Five Cents to
One Dollar and Up

T. L. SCHAEFER, Proprietor

GRAYSON'S

"SUITS ME"

415 Fourth Street
SIOUX CITY, IOWA

**DUSTY'S
PARK LUNCH**

BREAKFASTS : LUNCHESES
DINNERS

Swift and Courteous Service
PETERS PARK

*Meet Your Friends at
Barney's College Service Store*

Where you can buy everything
in college needs.

CARA NOME TOILETRIES
and all other brands.

OUR FOUNTAIN SERVICE IS THE
VERY BEST

Bus Tickets Anywhere

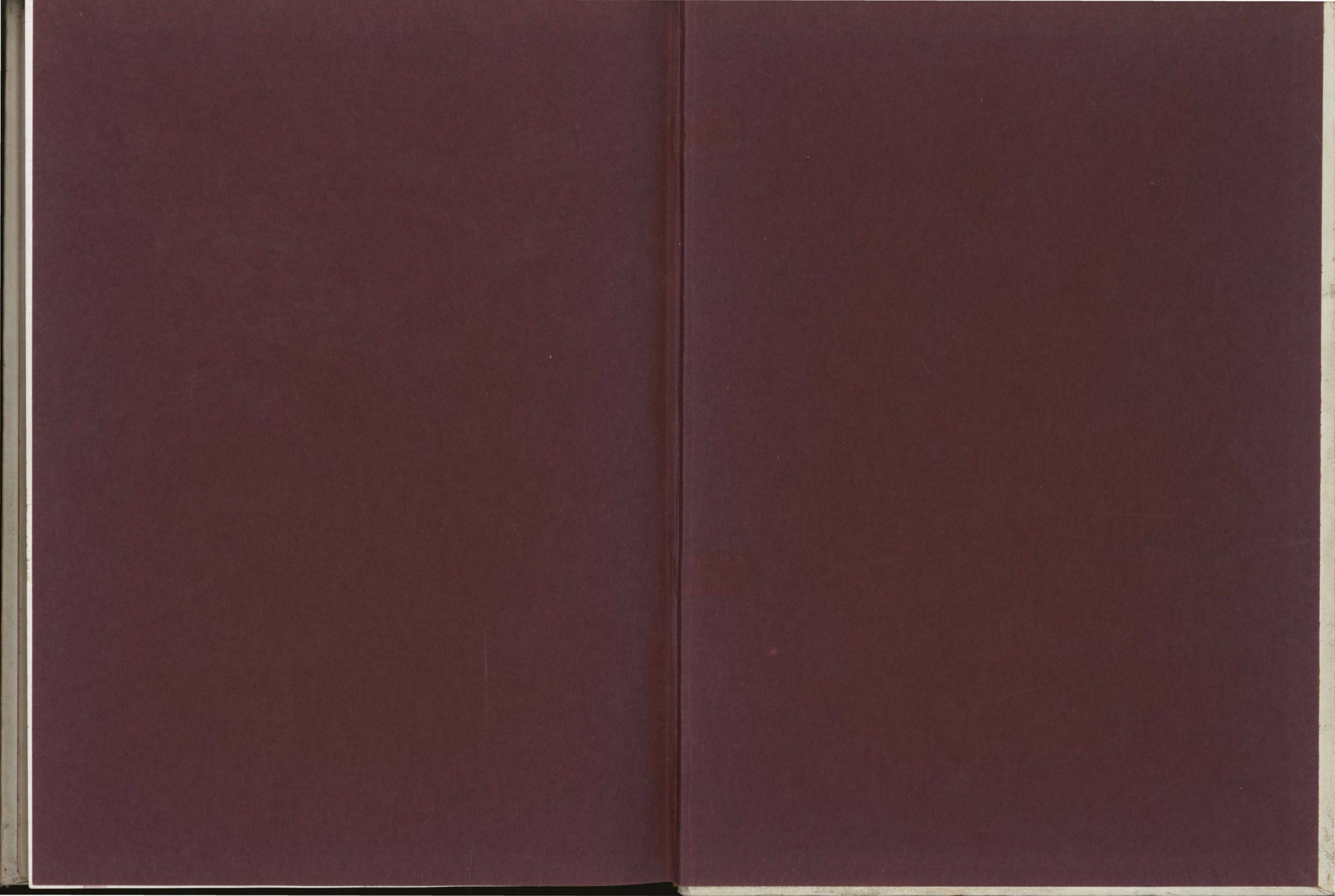
Barney's Morningside Pharmacy

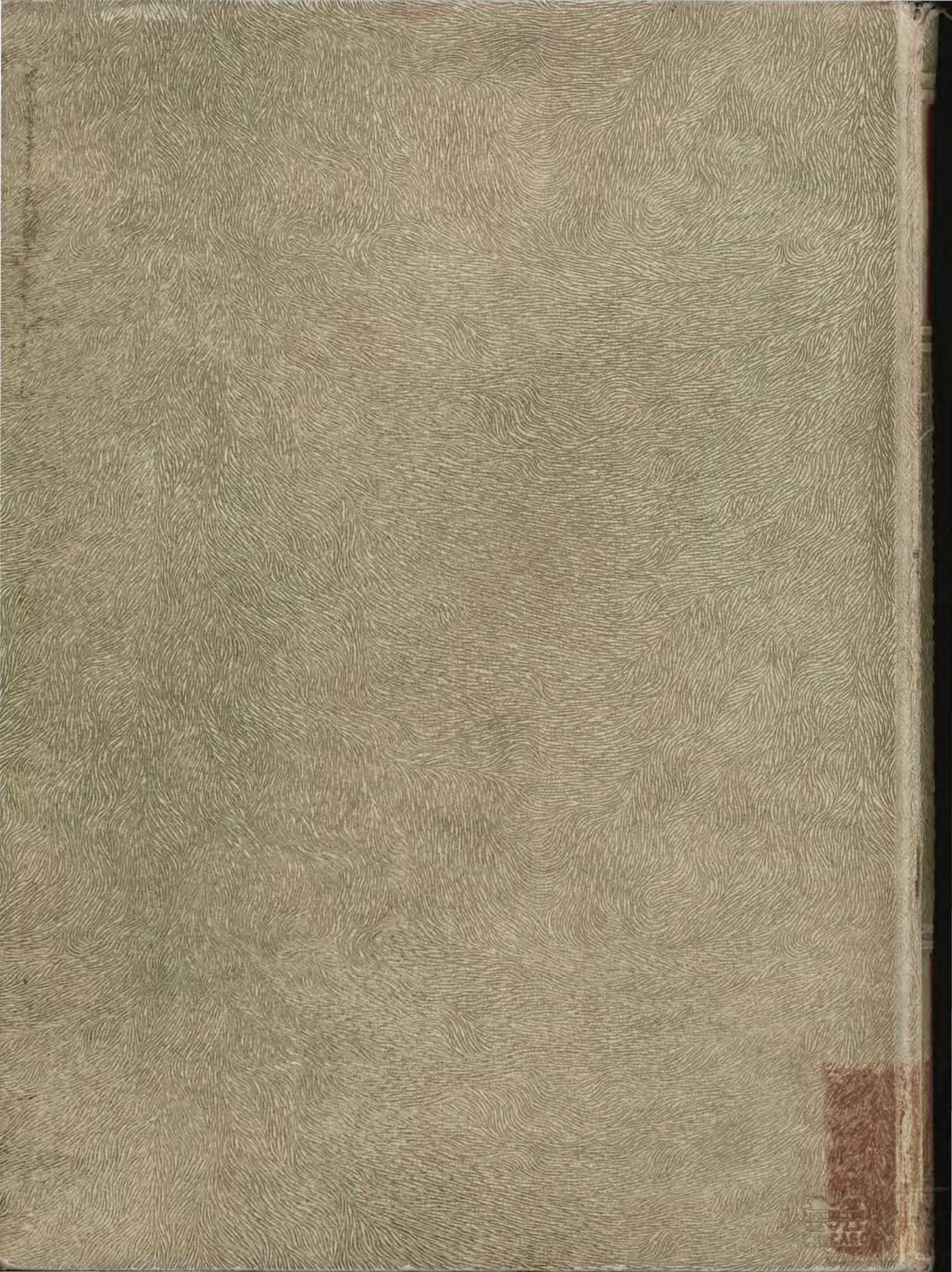
The Rexall Store

**SIOUX CITY
LUGGAGE SHOP**



Large Selection
of Luggage and
Handbags





UNIVERSITY OF CHICAGO