

WHY BE NORMAL?

Normality! did it exist on our campus in 1988? While you ponder on that question, think about this one...

WHY BE NORMAL?





CONTENTS CONTENTS CONTENTS CONTENTS CONTENTS CONTENTS CONTENTS CONTENTS CONTENTS

GENESIS — 2 WHAT HAPPENED? — 6 THEM — 32 MINIMAG — 47
 BUNCHES OF PEOPLE — 52 RESIDENTIAL BUDDIES — 72 NOT LATIN — 82
 SENIOR CITIZENS — 92 THE GAME PLAN — 104 US — 128
 EXODUS — 153 THE MARKET — 158 WHERE AM I? — 164

1987

The 1987-88 Sioux
Yearbook

Why Be Normal?



Did you ever wonder how Morningside College's new logo originated? The new logo, above, was designed by Spruill and Company of Dallas, Texas.

The letter "M", familiar on a letter sweater, reflects the mood of the college, with the three bars representing the strongest majors. Spruill and Company designed the bold and bright colors to convey the attitude here at Morningside.

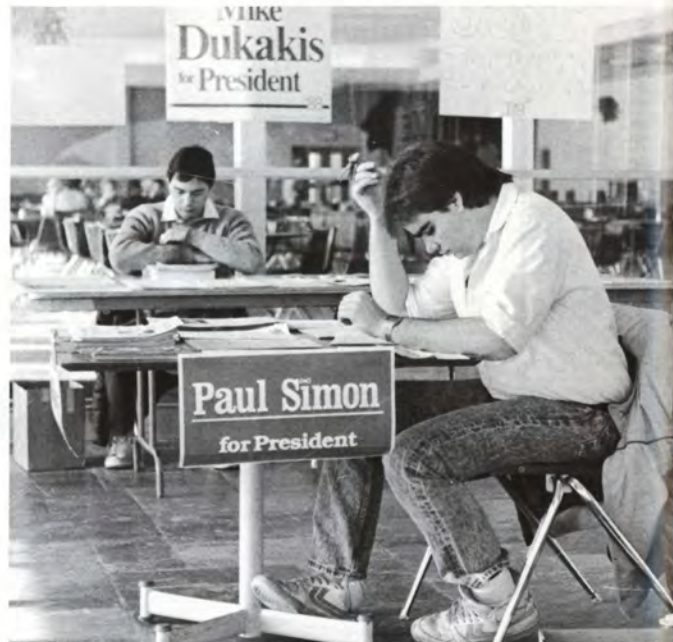
The word Morningside is in capital letters which symbolizes the academic strengths of our college. For example, the letter "R" stands for Morningside's strong tradition.

The new phrase, "Morningside, the way college ought to be", is geared toward our campus being relatively small, yet the quality of education is equal to that of a large university.

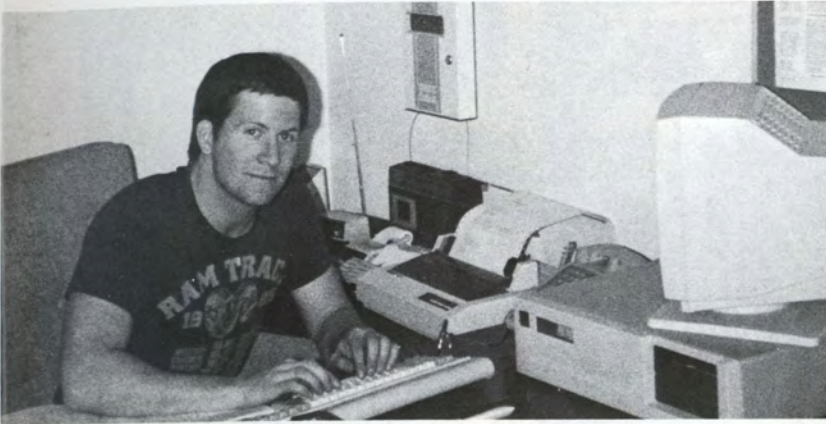
Top Right: Literature concerning each presidential candidate was available for students in the Commons lobby. Pictured from left to right are Earl Horlyk and Sean Flaherty. **Top Left:** Rev. Steve Plymale checks out his box on his office door. **Right:** Helping out the Collegian Reporter, the Sioux's very own Laurie Harpenau puts Spiegel inserts in each issue of the CR.

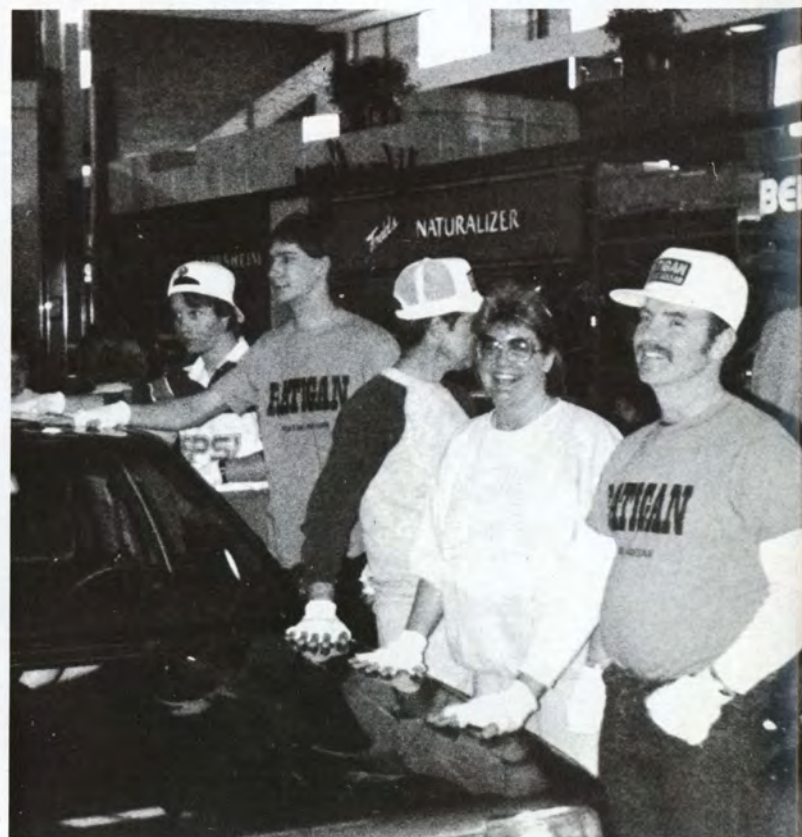
Opposite page, Top Right: Chris Belt and Mike Jones try to escape the camera. **Top Left:** Nick Votek gives a demonstration on the security office's computer. **Bottom:** Jesse Jackson, presidential candidate, gives a speech in the Randolph Room early spring.

Everything's Ordinary . . .



So Why Be Normal?





Top Right: Work study student, Marchelle Roberts, as she works in the Commons Post Office. Top Left: In the fall, Frank Breneisen and several students traveled to Chicago to view famous art. Above: The Jones

Building on a warm Sunday afternoon. Right: The Ratigan Car give away this spring was held in the Southern Hills Mall. M'side student, LeeAnn Dula had an opportunity to "palm" a Nissan.

Changing Our Looks Just For You!

You couldn't walk across campus without noticing Morningside's new looks.

In the fall of '87, Charles City was being remodeled, moving the staff and faculty into other facilities on campus. Back in use by the second semester, students found it a vast improvement except for one drawback. The hall ways had no heat!

The Commons was also given a new look during the summer of '87. Everything in the building was painted, wallpapered, recarpeted, reupholstered, draped or polished up,

just in time to impress new and returning students. Most spectacular in the Commons was the Buckingham's snack bar, formerly the Wig Wam. Named after our own A.J. Buckingham, the snack bar acquired a pizza oven and 3 new televisions, strategically placed throughout the room. The barrier walls were removed and made the room look larger but more inviting.

Other changes, included the clearing for and construction of the new HPER(Health, Physical Education,

and Recreation) building to be finished within two years. Spring of '88 marked the removal of all houses surrounding the Commons building except for the Alumni House. By the time Spring Break rolled around, the whole block looked pretty barren.

There were a lot of changes made in 1987'88, making life on campus hectic at times, but still full of fun. Case in point — see picture below of the demolition crew tearing down the TKE house.

Article by Valerie Johnson.



SPRIT!

What first comes to mind when you hear the words, "School Spirit"? I first think of cheerleaders, team mascots and pep rallies. These, however, are only symbols of school spirit. The true school spirit lies in us all; the students, staff and faculty.

One can easily see school spirit in the students. They may come from different parts of the country, or world, but they almost immediately form a special bond between each other. They become friends who are there when you need them the most.

They are friends who cheer you on at your finest moments. They are the friends you'll hold dear for the rest of your life.

The staff and faculty of our college also radiate school spirit. They are not only our instructors and advisors, but they are our friends. They help us with some of our most important decisions and instruct us on the life we will soon lead. We seek them out for advice and they give more than we could ask for, and they will help carry on the spirit

after we have left the college.

So the next time you hear the words, "School Spirit," don't be afraid to think of cheerleaders, team mascots or pep rallies, because they are a part of school spirit. Just don't forget that the friend you are eating lunch with, the professor whose class you were just in and the secretary you just spoke with; they are all a big part of your school spirit.

Story by Chris Belt.

6





WHAT HAPPENED?

HOGWILD WEEKEND: ORIENTATION EXPERIENCE

The 1987 freshman orientation was certainly far from normal. The theme was "Hog Wild About Orientation." Eileen Malone, Orientation Director, planned a wide variety of activities for freshmen and other new students.

On Saturday, August 29, residence halls opened at 12:30 pm. New students came from as far away as Florida and Washington state. From 2:30 to 3:30, an informal reception was held for parents, students and advisors in the Commons cafeteria. Parents later met in Kl-inger Neal Theatre while all new students

assembled in their orientation groups. By 5:00, the parents had started saying goodbye to their children. The first street dance was held that night.

Sunday brought about a wide range of activities. A morning worship service was held as well as an "Anything Goes Olympics" which took place that afternoon. Then students met with their advisors. That evening, an outdoor barbecue with comedian/magician, Gayle Becwar, was held to introduce new students to the social aspects of college life.

On Monday, August 31, registration took place. Time was given for new students to get acquainted with one another, explore Sioux City and just relax. The Rumbles performed at a dance in the Commons Monday evening as night classes began. Day classes began the next morning.

Morningside's orientation system serves to initiate new students in a positive, helpful manner.

Story by Angela Rehal.



Above: "Anything Goes Olympics" started off with a bang, as new students introduced themselves by writing their names on other freshmen. Top Right: The Tug-Of-War game proved muddy and messy for some. Right: Orientation group leaders helped freshmen move into the dorms, and got them acquainted with their new neighbors.





Left: Students and faculty relax after a Saga catered meal entertained by the comedian/magician, Gayle Becwar. Bottom Left: Amy Gerking shows her enthusiasm as an orientation leader. Below(Left to Right): Trouble shooters, Tami Vanderpol and Doug Martin (Seated), with Orientation Director, Eileen Malone and group leader, John Rossiter greet freshmen.



YOUR KIDS — THEN AND NOW

Parents Of The Year

Marvin and Bonnie Ulven

Parents Of Sara Ulven

“Your Kids — Then And Now” was the title of Parents’ Weekend 1987 which started with a buffet luncheon on September 26.

Laura Scammacca and David Archer were the mistress and master of ceremonies which is always done by the Junior class members of the Parents’ Weekend committee. Musical entertainment was provided by Alicia Wessendorf and Michelle Bluford.

Frank Breneisen from Morningsides Art Department was there to speak on his sabbatical to Ireland.

Right: Mr. and Mrs. Frank Breneisen. Bottom Right: Michelle Bluford, Mr. and Mrs. Wessendorf, and Alicia Wessendorf. Below: Laura and Patty Scammacca.

Article by Doug Proffitt.



DING — A — LING — A — LING!

The 1987 Morningside College Phone-A-Rama fundraising campaign has been termed a success, according to Fred Erbes, Director of Alumni Development and coordinator of the effort. Preliminary cash and pledge receipts for 1987 totaled \$153,534 — more than enough to surpass the \$150,000 goal. The 1987 total was expected to grow higher as outstanding pledges were received and follow up calls were made.

“Once again alumni and friends of the institution have met the challenge of supplementing student financial aid programs,” Erbes remarked. “We want to thank each donor who participated in this year’s campaign.”

Erbes said 1987’s Phone-A-Rama actually got an earlier start than the scheduled October 25 through November 12 calling period would indicate.

A total of 1,201 alumni returned gifts with alumni directory surveys mailed out the previous summer, generating \$38,666 in advanced funds. Those donors were not called during the regular three-week calling campaign. Any new or increased gift to the college qualified donors to receive a free copy of the 1988 Alumni Directory. Erbes said 763 alumni were new givers

to the college, “which is a tremendous statistic. We are gratified by the significant increase in the donor base to Morningside College.”

During the actual campaign, \$114,868 was raised in pledges and alumni/employee matching gifts. Volunteer callers made 7,782 calls which resulted in 2,308 pledges.

Erbes said he was particularly pleased with the response of alumni in the Sioux City area who volunteered to serve as team captains and callers. Over 20 alumni teams formed this year, compared to nine in 1986. “Much of that credit goes to local chairman, Ed DenBeste,” Erbes said.

The overall individual winner was freshman Tami Hedges of Fairbank, Iowa, who raised over \$7,500 in pledges. She won a trip for two to Orlando, Florida, and Disney World.

A number of Siouxland area businesses provided several prize incentives for callers as well as refreshments during the nightly campaign.

Pictured Below: Abby McMeekin gets her pledges through hard work and fun!





The Voyage Home

Homecoming 1987, "The Voyage Home" was a busy, event packed week. Saga — Marriott kicked it off with an indoor carnival complete with corndogs, cotton candy, and sno cones. Klinger Neal's fall play "The Country Wife" opened and the CBC film of the month was "The Secret Of My Success." The weekend finally drew nearer and the cheerleaders got the student body pumped with a pep rally Friday morning. That evening the yearly talent show took place, in which preauditioned students got a chance to show off their stuff. This year there was plenty of variety to cap-

ture the audience's attention. Selected acts included a Korean friendship song, the track rappers, the "brothers" lip sync, ballads, piano pieces, and just crazy tunes.

The traditional coronation followed with announcing the Freshmen, Sophomore, and Junior representatives, as well as the crowning of the King and Queen, Todd Koos, and Cheryl Dahl of the Homecoming Royalty.

The homecoming dance featuring "Limited Warranty" took place Friday night. Couples were everywhere filling the dance floor and the tables in their semi-formal attire.

There wasn't much time to rest between all the week's excitement and Saturday afternoon when the parade thrilled young and old, students and neighbors. Many groups such as Indian Alliance, Mu Phi Epsilon, the Alpha Delta Pi's, "The House" and more entered the parade and KMSC rocked the procession with gigantic sound system float.

A tailgate parking lot party followed with plenty of pizza and freebies from Domino's. Saturday evening, the homecoming game took place when the Chiefs took on USD at Robert's Stadium.

Story by Mary Viz.

Top Picture: KMSC rocks the parade with their stereo sound. **Left:** Senior Representative candidates for Homecoming Royalty were: Left to Right — Seated: Cheryl Dahl, Carolyn Lamaak, Terri Fischer. Middle Row: Michelle Bluford, Dave Willett, Todd Koos, Alicia Wessendorf, Diane Kutz. Back Row: Lowell Ernst, John Carey, Todd Armstrong, and Kyle Ellerbeck.

Pictured on Opposite Page: Homecoming King and Queen, Cheryl Dahl and Todd Koos.



Royalty In Our Midst

Right: A saga worker spins cotton candy for the homecoming carnival. Top Right to Bottom Robb Mc Mullen practices a favorite pastime by making a moustache out of cotton candy. Homecoming Queen, Cheryl Dahl, is the privileged passenger atop a '87 corvette. From France to Malasia the International club displays its diversity. Morningside's marching band leads the festivities. Chuck Raymond displays heritage as he rows down Peter's Avenue on the Indian Alliance Group's float.



For 21-year-old Alicia Wessendorf, pictured above, the third time was the charm. After participating in the River-Cade Queen Competition her senior year of high school and her sophomore year of college, the Newell, Iowa native decided to give the competition one more try. And on that Friday night, she walked away with the roses.

During the coronation ball at the Marina Inn, Alicia was crowned the 1988 River-Cade Queen. She was selected from a pool of 52 girls competing to reign over next year's 25th

anniversary celebration.

Alicia, a senior, is studying mass communication and music. She is also a part-time news reporter for KNMS-KSEZ Radio in Sioux City.

Though it took her three attempts to be named ambassador, Alicia said the effort was worth every minute. "I really wanted to be a part of River-Cade," she said. "With a little bit of self-confidence and a whole lot of persistence, I was bound and determined to make it as the queen — luckily I did."

Homecoming

October 5 — 11, 1987



Monday — Carnival 4-6 p.m. MDR
Tuesday — Royalty Election All Day Commons
Wednesday — Michael John Concert 9:00 p.m. Dimmit Formal
Thursday — Film — "Secret Of My Success" — 9:30 Randolph Room
Friday — Pep Rally 10:00 a.m. Commons Talent Show 7:00p.m. Eppley — Coronation 8:30 p.m. Eppley — Dance-Limited Warranty 9:30 p.m. Convention Center.
Saturday — Parade 2:00 p.m. Morningside Avenue — Football vs. USD 7:00 p.m. — Roberts Stadium
Sunday — Worship Service 11:00 a.m. Grace Church — 11:30 a.m. Immaculate Conception



Big Names At Jazz Fest

Morningside College was treated to a few special presentation performances during Jazz Festival Weekend. Other than hearing the jazz bands from the Tri-State area, the jazz highlights of the entire festival was the convocation performance on Friday by the Morningside Jazz Band and an afternoon performance by the Morninsliders. The special feature performance by Jeff Beal, David Mann, Ned Mann, and Jay Azzolina in concert at the Randolph Room, Saturday night.

When asked how he got into the business, David Mann told of how he played in his high school band and that his brother, Ned, would often times bring home some of his friends for an impromptu session. Says Mann, "My house was the neighborhood jam pad."

Each of these artists have released an album or will be releasing one soon. Beal's first solo album, Liberation, was newly released from Island Records. Jay Azzolina's album, Antilles, is due out sometime this spring. And Mann's newly released album, Games, has already received critical acclaim.

Article by Dawn Michaels.





Puttin' On The Fritz!

Halloween proved to be a holiday not for children only as students turned out in costume to the CBC dance. "On The Fritz", the featured band, performed in the Randolph Room.

Though not everyone dressed up, those who did added to the variety of the evening. Walking through the commons, one very likely ran into Donald Duck, Dracula and the Mrs., The Three Little Pigs, Pipi Longstocking, an old man with a pot belly (who incidentally won the prize for the best costume), and a host of other characters.

Those who weren't on the dance floor were probably serving time in

the Rec Center's jail. "Officers" handcuffed people and carted them down to endure their sentence which lasted from 15 minutes to an hour. Friends or enemies paid \$.25 — 1.00 to see their peers locked up. "Prisoners" either served their time or could be released upon playing a video game.

ODK was there with the refreshments, pop and pizza. Without going door-to-door for candy, Morningside students still had an evening of tricks or treats.

Left: Julie Lien as her Herd Book with Bill Madden.

Article by Mary Viz.

17

CBC Live Music Presents:



On The Fritz



1987-88 Convocations

Convocations this year included several surprises, one of which was the Easter Convo.

This year, Morningside's Easter Worship Convo consisted of a special dramatic presentation by a talented group of Morningside College student. Entitled "Power Struggle: Light versus Darkness," the contemporary program portrayed, through effective use of mime and modern music, the origins of the ongoing battle between the forces of good and evil.

According to Derek Jacobsen, a Morningside senior, and coordinator of the program, the purpose of the group's performance was to show the reality of Christianity and its message of hope in an interesting and exciting way. Derek realizes that at the typical church service, worshippers experience moments of boredom as well as enlightenment. In addition, Sunday sermons generally tend to convey only bits and pieces, one at a time, of the message of Christianity. The goal of the music and mime program was to give the "whole" of Christianity in or-

der for people to more easily understand the constant battle between Light and Darkness.

The dramatization was first put together by youth attending the Okoboji Lutheran Bible Camp in the summer of 1986. Derek attended the same camp this past summer, when the program continued to be shown for high school in parts of Iowa. He was impressed with the idea, and brought it to Morningside, hoping to find some students interested in performing it in the Sioux City area. Several students expressed enthusiasm in "Power Struggle," and during the fall semester, Derek and his group of mimes rehearsed to ready themselves for their spring semester performances.

Performing Morningside's version of "Power Struggle" were: Derek Jacobsen as Jesus Christ; Cory Roberts as Satan; Mary Hansen, Doug Proffitt, Erica Gunderson, and Jeff Arnold as Disciples of Christ; and Tonia Arehart, Dave Nash, and Kyle Ellerbeck as Disciples of the World. Doug Martin ran the lighting and props.





Events Sponsored by CBC

CBC is the entertainment group on campus. They have brought events such as bands, movies, singers, comedians, speakers, and also pinball tournaments to the Morningside campus. In addition, CBC also organizes the Daytona beach trip every year at Spring Break.

The Live Music Committee among other dances sponsored, the Halloween dance and the Ze Bop dance. On Halloween, a prize was given to the best costume.

The Films Committee brought block-buster hits to campus including: Platoon, and National Lampoons Vacation.

The Rec Center sponsored a Coed Pinball Tournament in the gameroom

for Valentine's Day, as well as other tournaments all year long.

The Ideas and Issues Committee have brought The Famous Last Words Series onto campus, as well as the International Students' Forum, the Student Senator Forum, the Parking Forum, and a food collection for World Hunger Day.

The Outings Committee, as mentioned earlier have organized the Daytona Beach trip, as well as other activities throughout the year.

The Variety Entertainment committee has brought singers, comedians, jugglers, and hypnotists to campus.

CBC as whole is the most active group on campus, led by Stacy Childs, Vice President of Student Government.



The Country Wife

CAST OF CHARACTERS

Mr. Horner	Al Johnson
Mr. Harcourt	Ryan Larson
Mr. Dorilant	Russell Lockwood
Mr. Pinchwife	Monte Christensen
Mr. Sparkish	Nya Kadenge
Sir Jasper Fidget	Don McCormick
Mrs. Margery Pinchwife	Lorraine Watts
Mrs. Alithea	Stephenie Palmer
My Lady Fidget	Trudy Moody
Mrs. Dainty Fidget	Jennifer Hoefert
Mrs. Squeamish	Jill Riden
Old Lady	DeLaine Thompson
A Quack	William Ladd
A Girl	Vicki Smalldridge
Lucy, Alithea's Maid	Abby McMeekin
Extras	Brenda Bush, Steven Haynes
Assistant Director/	
Stage Manager	Mick Port

"The Country Wife", written by William Wycherley during the English Restoration Period, is a comedy that deals with virtue, lust, and vice. The people who made this play possible included: Bette A. Skewis, Direc-

tor and Costume Coordinator ;Bruce Bunger, Scenic and Lighting Design ; Michael Port, Assistant to the Director ; Merlin Olson, Wigs and Hair Styles ; Vicki Smalldridge, Stage Manager .



FALL PLAY

Left: All eyes are on Al Johnson as the scheme is unraveled in "The Country Wife". Below: Al Johnson parties it up with lovelies (Left to Right) Trudy Moody, Jill Riden and Jennifer Hoefert.

Opposite page(Top): Monte Christensen looks skeptical while his country wife, Lorraine Watts tells her story. (Below): Nya Kadenge addresses Stephenie Palmer while Ryan Larson and Abby McMeekin look on.



The Cherry Orchard

Produced By . . .

Director and Scenic Design Bruce E. Bunger
 Costume Design Bette A. Skewis
 Lighting Design Russell Lockwood
 Wigs and Hair Styles Merlin Olson
 Assistant to the Director Vicki Smalldridge

Cast Of Characters

Lopahin, Yermolai Alexeyevich, a merchant Nya Kadenge
 Dunyasha, a maid Lorraine Watts
 Yepihodov, a clerk on Ranevskaya's estate Don McCormick
 Firs, a family servant Al Johnson
 Anya, Madame Ranevskaya's daughter Trudy L. Moody
 Ranevskaya, Lyubov Andreyevna, owner of the cherry orchard
 Jennifer Hoefert
 Varya, Madame Ranevskaya's adopted daughter Jill Riden
 Gaev, Leonid Andreyevich, Madame Ranevskaya's brother Ryan
 Larson
 Charlotta Ivanovna, a governess Stepenie Palmer
 Madame Pischik, owner of a nearby estate Suzy Monkeliien
 Yasha, a servant to Madame Ranevskaya John Russell
 Trofimov, Pytor Sergevich, a student Russell Lockwood
 The Station Master William Ladd



Winter Play



THE DINING ROOM

"The Dining Room" was a refreshing play consisting of scenes that could happen or have happened in dining rooms anywhere. Every scene caught the emotions of the audience and made us laugh in some scenes and almost to tears in others. The cast did a great job.

The cast consisted of: Jennifer Hoefert, freshman from Sumner, WA.; Russell Lockwood, sophomore from South Sioux City, NE.; Trudy Moody, junior from Storm Lake, IA.; Todd Peterson, junior from Farhamville, IA.; Michael Port, sophomore from Sioux City, IA.; and Jill Riden, sophomore from Charles City, IA..

These people played several different characters in this play directed by Bette A. Skewis. Bruce E. Bunker designed the scenery, Michael Port disigned lighting and Lisa Ann Grubb was assistant to the director. "The Dining Room" was one play you did not want to miss in 1987-88.

23



MORNINGSIDE COLLEGE

Honors Convocation



April 27, 1988
Eppley Auditorium

Presented by

*Omicron
Delta
Kappa*

*Celebrating Our
75th Anniversary*



National Leadership Honor Society

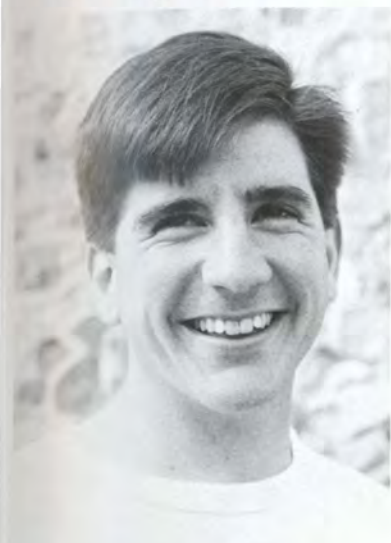
Who's Who Among Students

**In American Universities
And Colleges**

Todd Armstrong
Randee Ball
Douglas Beauchene
Jacqueline Bitz
Gretchen Chamberlain
Victoria Conover
Lowell Ernst
Terese Fischer
JoAnne Forney
Heidi Gonnerman
Lisa Grubb
Mary Hansen
DeeDee Harm
Joel Higgins
Derek Jacobsen
Shelly Klein
Mary Kottman
Diane Kutz
Ronald Larvick
Julie Lien
Lori Ludwig
Dori Mc Indoo
David Reed
Elaine Palmberg
Michael Powell
Julie Schlosser
Lynelle Schwien
Sara Ulven
Mary Viz
Alicia Wessendorf

Marilyn Heilman — Faculty Person of the Year!

Cory Roberts — Winner of The Sophomore Cup!



Marilyn Heilman was named Faculty Person of the Year and Cory Roberts won the Sophomore Cup at the Honors Convo on April 27th. Marilyn Heilman, an Assistant Professor in the Education Department, won the award which is chosen annually by a vote of the student body. Cory Roberts, a Biology and Chemistry major from Grand Island, Nebraska, was chosen for the Sophomore Cup by the current members of ODK.

Also, new members were initiated into ODK, which is a national leadership honor society, at the Convo at Eppley Auditorium. As well as other awards to various students.



Not Your Normal Formal!





Spring Formal '88 was held at the Holiday Inn on April 9. This years theme was 'Moments and Memories' and put the evening in the right atmosphere to make those memories. Upon arriving, each woman received a long stemmed rose and a chance to be photographed with their date. Following the banquet, and a video presentation of campus memories, the formal started to roll as the D.J.'s and their music drew people to the dance floor. Spring Formal '88 was truly an evening of moments and memories.

Top Left: Teachers and students alike enjoyed the evenings food and entertainment. From left to right with their wives, Frank Breneisen, and Ed Shane. Top Right: Cathy Mc Mullen and Tad Kelson take a break long enough to pose for the camera. Left: Paula Puckett enjoys herself on the dance floor. Opposite page: Just one of the good looking couples at formal . . . Bryce Feldhoff and date Amy Gerking. Photos by Amy Gerking.

29 Graduate At Winter Ceremony

Diploma were awarded to 29 Morningside College students during winter commencement ceremonies Sunday, December 20 at Eppley Auditorium of the Morningside campus. Dr. Miles Tommeraasen, college president, awarded 16 Bachelor of Arts degrees, 12 Bachelor of Science degrees, and

one bachelor of Music Education degree.

Seven students from the class graduated with honors, maintaining at least a 3.5 grade point average. Graduating with honors were Carol Mitchell, Hinton, Iowa, Ann Trimble, Galva, Iowa, Kimberly Helmick, St. Louis,

Missouri, Amy Zimmerman, Sioux City, Mary Kottmann, Lawton, Iowa, Patricia Hoffman, Onawa, Iowa and Andrew Sudman, Gowrie, Iowa. Below graduate Robert Mc Mullen and spring graduate, Valerie Johnson, celebrate Robb's graduation with her family.



Winter Graduates Included . . .

ILLINOIS

Chicago: Alfred Johnson

IOWA

Audubon: Robert Mc Mullen

Battle Creek: Todd Verschoor

Council Bluffs: Sharon Torneton

Galva: Ann Trimble

Gowrie: Andy Sudman

Hinton: Carol Mitchell

Jamaica: Tanya Druivenge

Lawton: Mary Kottman

LeMars: Anne Koopman

Onawa: Patricia Hoffman

Sergeant Bluff: Karolyn Erichsen

David Hickey

Sioux City: Douglas Anderson

Chris Cuthrell

Keri Gasma

Margaret Fenton

Tracey McCreary

Jane Nylen

Robert Reams

Kimberly Ruby

Eric Siert

Amy Zimmerman

Waterloo: Todd Armstrong

MINNESOTA

Champlain: Dori Mc Indoo

NEBRASKA

Omaha: Gardine Wilson

So. Sioux City: Tami Streyffeler

FOREIGN COUNTRIES

Teipei, Taiwan: Muh Shiarn Lii

Yi-Jung Cleone

Top Left: Graduate Dori McIndoo leaves Eppley Auditorium with a smile and a diploma. Left: Kim Helmick, a newly wed graduate leaves the stage with her degree as Bryan Davis waits to escort her back to the other graduates.

135 Graduate During Spring Ceremony

Morningside College

Sioux City, Iowa

has conferred upon

The Graduating Class of 1988

Their Appropriate Degrees

with all the rights, privileges and responsibilities thereunto appertaining. In Witness Whereof, this Diploma has been issued and the Seal of the College affixed.

Given by the Board of Directors upon rec-

ommendation of the faculty

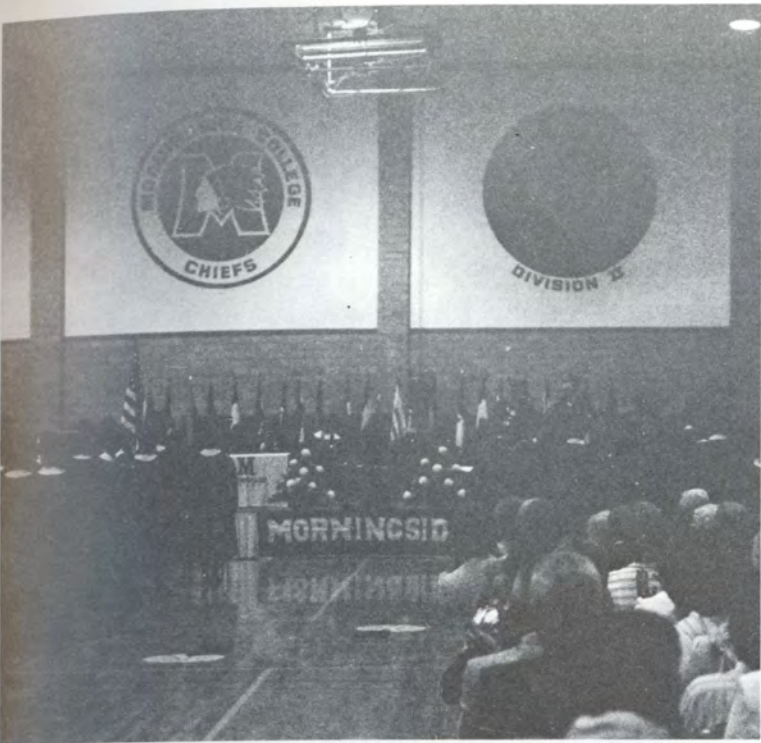
May 8, 1988

On the above date, 135 eligible Seniors received their degrees in the Alley Gymnasium.

Pictured below: Graduate Kirt Bennett celebrates after commencement exercises with his family. Opposite page, Top left: A quiet scene of Alley Gymnasium before the degrees are conferred. Top right: Graduate

Valerie Johnson and sister. Bottom left: Connie Root's family greets her as she leaves Alley after the ceremony. Bottom right: Not only cameras recorded this event, but Video Recorders got in on the act.





FOCUS ON CAMPUS SECURITY

In the commons, you may have see a tall man carrying a walkie talkie. Magnum P.I.? Not really, but rather, Kenny Graham, Director of Security for Morningside College. After working here five years, Kenny likes the low-key atmosphere of the campus security, "It's not the CIA!" Before Kenny worked here, he earned an associate degree in Police Science from Western Iowa Tech and was a deputy sheriff for Woodbury County. He decided to return to school and attended Morningside College while keeping a work study job in the computer center. After graduating in 1983, Kenny began work as our Security Director.

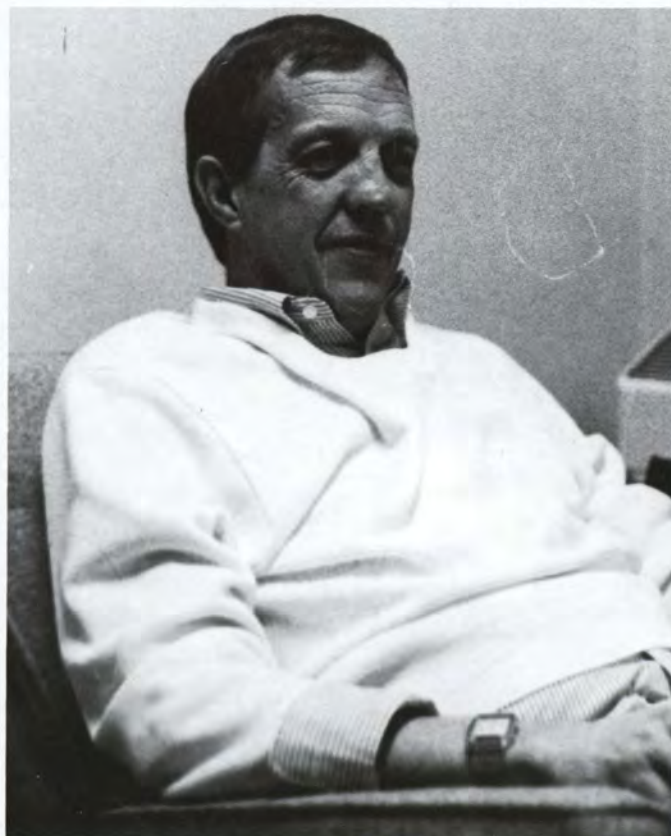
He supervises fifteen work study students and has them working 24 hours a day, rain or shine, 365 days a year. Nick Votek, a junior has worked for Kenny two and a half years and is expected to be promoted to lieutenant next year. Nick said that students are making

use of them and know campus security is there. Students feel they can trust work-study students more than a hired non student staff. This makes the security students feel more responsible. Kenny is proud of his crew, "They take pride in what they do, and that's what makes it work."

In 1987, Kenny and the entire security department was featured and on the cover of "International Association of Campus Law Enforcement Administrations" magazine. Because of this and his involvement, Kenny is in the running for regional director of the magazine.

He is also a member of the American Society of Security Specialists. Kenny held a seminar in Las Vegas last September on stress and held one other seminar in Omaha this spring on Issues and answers.

Article by Valerie Johnson.





THEM!

Just A Few Administrative Faces . . .

Far Right: President Miles Tommeraasen gets a demonstration on one of the library computers by Charles Le Master. Right: Rev. Russell Wilson, Associate Director of Development. Below left to right: A.W. Buckingham, Vice President for Es-

tate Planning. Donald Poppen, Senior Vice President for Institutional Advancement. Dr. Carolyn Rants, Vice President and Dean for Student Affairs. Dr. Miles Tommeraasen, President of the College.



34

Dr. Carolyn Rants shows off her office in the Student Services Center, 2nd floor Lewis Hall.



As Well As Our Faculty . . .



Left: Frank Breneisen, professor and Art department chair at work in McCullum Hall.



Left: Alan Arnold, Associate Professor Music . Top Row: Richard Bobys, Professor and Department chair, Department of Sociology and Criminal Justice . Roberta Boothby, HPER Department chair, Associate Athletics Director, Intermural Department, and Athletic Business Manager . John Bowitz, Associate Professor of Art . Larry Brandolino, Music Professor . Kathleen Buchheit, Assistant Professor, Nursing, Acting chair . Bottom Row: Bruce Bunger, Chair, Department of Communicative Arts . Ting-Shih Chia, Director and Assistant Professor of Sociology/ Criminal Justice . Dr. Joseph Claflin, Professor Biology . Robert Conley, Associate Professor English . Dr. John Dooehen, Professor of French, Chair of Foreign Language, ESL Department .



Right: Dr. John Doohen, Professor of French, and Chair of Foreign Language/ESL Department, gives a lecture at one of the international convocations held each year.

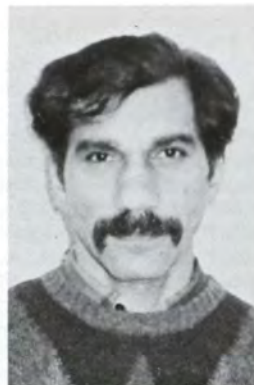


Right: Dr. Charles Ess, Professor of Philosophy. Below, Top Row, left to right: Dr. Bruce Forbes, Professor of Religious Studies, Department Chair. Kerry Frampton, Instructor Math Sciences. James Galli, Associate Professor Physics. Glenda Gallisath, Assistant Professor Business Administration. Dr. Robert Green, Chair and Professor of Physics. Bottom Row: Leo Harris, Associate Professor Accounting, Business Admin. Mrs. Jane Hey, Chair and Associate Professor of Biology. Dr. Jan Hodge, Professor of English. James Hopkins, Assistant Professor Bus. Administration. Donald Keeler, Assoc. Professor of Comm. Arts.





Below: Dr. Zorabi Honargohar, Assistant Professor Mathematical Sciences .

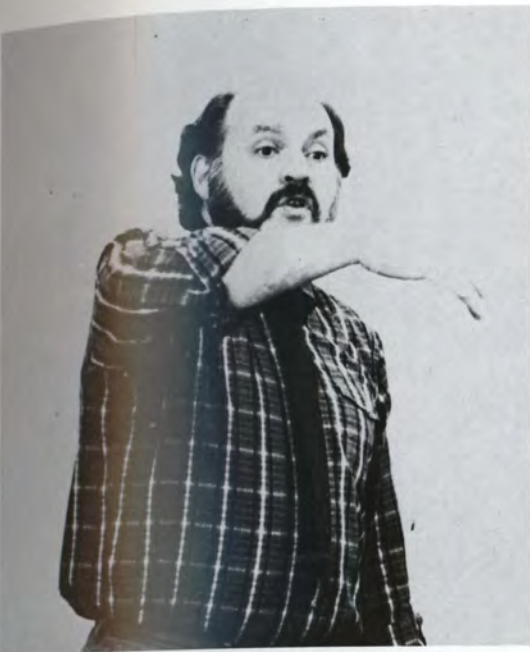


Far Right: **Nursing:** Seated left to right: Celeste Hinzman, Ass't Professor of Nursing . Kathleen Buchheit, Ass't Professor Nursing, Acting Chair . Standing: Carol Searls, Ass't Professor Nursing . Mrs. Sharon French, Nursing . LaVone Sopher, Ass't Professor Nursing Education . Janet Philipp, Instructor Nursing . Mary Hettinger, Instructor Nursing Education . Bottom Left: Glenda Gallisath, reading her mail as she walks back from a business class. Below, Top Row: Dr. Marty Knepper, Assoc. Professor and Chair, English Department . Dr. John Lawrence, Professor of Philosophy . Peter Lee, Chair and Assoc. Professor of Economics . Bottom Row: Dr. Mary Leida, Ass't Professor of Biology . Charles Le Master, Director of Library Services . Douglas Livermore, Chair, Div. of Economics and Business Admin. and Assoc. Professor of Bus. Admin. .



Right: Lewis Hall's cornerstone, found on the Northeast corner of the building. Top Row, left to right: James March, Associate Professor of Music . Victoria Marguesen, Associate Professor of Education . Dr. Edward Mazeika, Associate Professor of English and Linguistics . Dr. Dave Mc Alpine, Associate Professor of Foreign Languages, Chair Division of Humanities. Tom Mc Cracken, Head Men's Basketball Coach . Bottom Row: Harry Moon, Director of Choral Activities/Associate Professor of Music . Dr. Earl Moore, Chair and Professor of Psychology . Dr. Sharon Ocker, Chair Department of Education, Director of Graduate Division and Professor of Education . Dr. Richard Owens, Professor of Special Education . Janet Philipp, Instructor, Nursing Education .





Left: Harry Moon, Director of Choral Activities/ Associate Professor of Music .



Left: Dr. John Pinto, Associate Professor of Psychology . Top Row, left to right: Srinivas Reddy, Instructor, Computer Science . Louis Rossman, Department Chair, Professor of Music Education . Jim Scholten, Head Baseball Coach/ Assistant Basketball Coach, Writing Specialist . Dr. Albert Sellen, Chair and Professor of History and Political Science . Dr. Larry Sensenig, Professor of Psychology . Bottom Row: Dr. Edward Shane, Professor of Chemistry . Max Sharp, Assistant Professor of Communicative Arts . Bette Skewis, Assistant Professor Communicative Arts . Don Smith, Assistant Professor of Business . Glen Sussman, Assistant Professor of History/Political Science.



Pictured Right: Dr. Sharon Ocker, Chair of Department of Ed., Director of Graduate Division, Professor. Below: Max Sharp, Assistant Professor of Communicative Arts. Middle Row left: Joseph Shufro, Associate Professor of Music. Dr. Douglas Swan, Chair and Professor of Mathematical Sciences. Bottom row, left to right: Richard Weikert, Associate Professor, Agri Business, and Bus. Admin.. Dave West, Instructor, Department of Art.. Dr. William Yockey, Chair and Professor of Chemistry.



Through Every Staff Door . . .



Left: Gene Ambrosion, Director of Public Affairs, always has his door open for visitors. Camera men for example. Bottom: left to right: Marilyn Cozad, Writing Specialist, Learning Center . Kenneth Graham, Di-

rector of Security . Ruth Green, Vice President, Institutional Research and Planning . Below: Caught up in their work, the admission's office people weren't even aware of the candid camera.



The Other Side Of Mail!

Not everyone knows of Bernice and Ed Lundquist, the couple that runs the post office, in the lower level of the Commons building and also pictured right. They often hire work-study students to help them in distributing the mail to the proper post office boxes, and have worked there for several years.

Below Top Row, (left to right): Jacqueline Bitz, Secre-

tary, Financial Aid . Beverly Brower, Secretary, Education . Joanne Davis, Executive Secretary to Vis President and Dean for Student Affairs . Mike Eggleston, Director of Roadman Hall, Assistant Football Coach, Student Services . Bottom Row: Gary Gevik, Controller . Vivian Isaacson, Administrative Coordinator to Cecil Larson . Mary Johnson, Admissions Office Coordinator . Don Kelsey.





Left: Library Staff . . . Seated left to right: Mrs. Inge Zibers, Library Associate Circulation and Reserve . Carolyn Von Ehwegen, Library Associate/ Tech Services . Cindy Grause, Library Associate-Media Services . Christopher Feider, Information Services/ Bibliographic Instruction Librarian . Standing: Mrs. Carol Stevenson, Library Associate, Information Services . Charles Le Master, Director of Library Service . Kay Bowen, Technical Services Librarian . Mrs. Cathy Milbrodt, Assistant Director of Library Services, Media Coordinator, Chair Library Science Department .

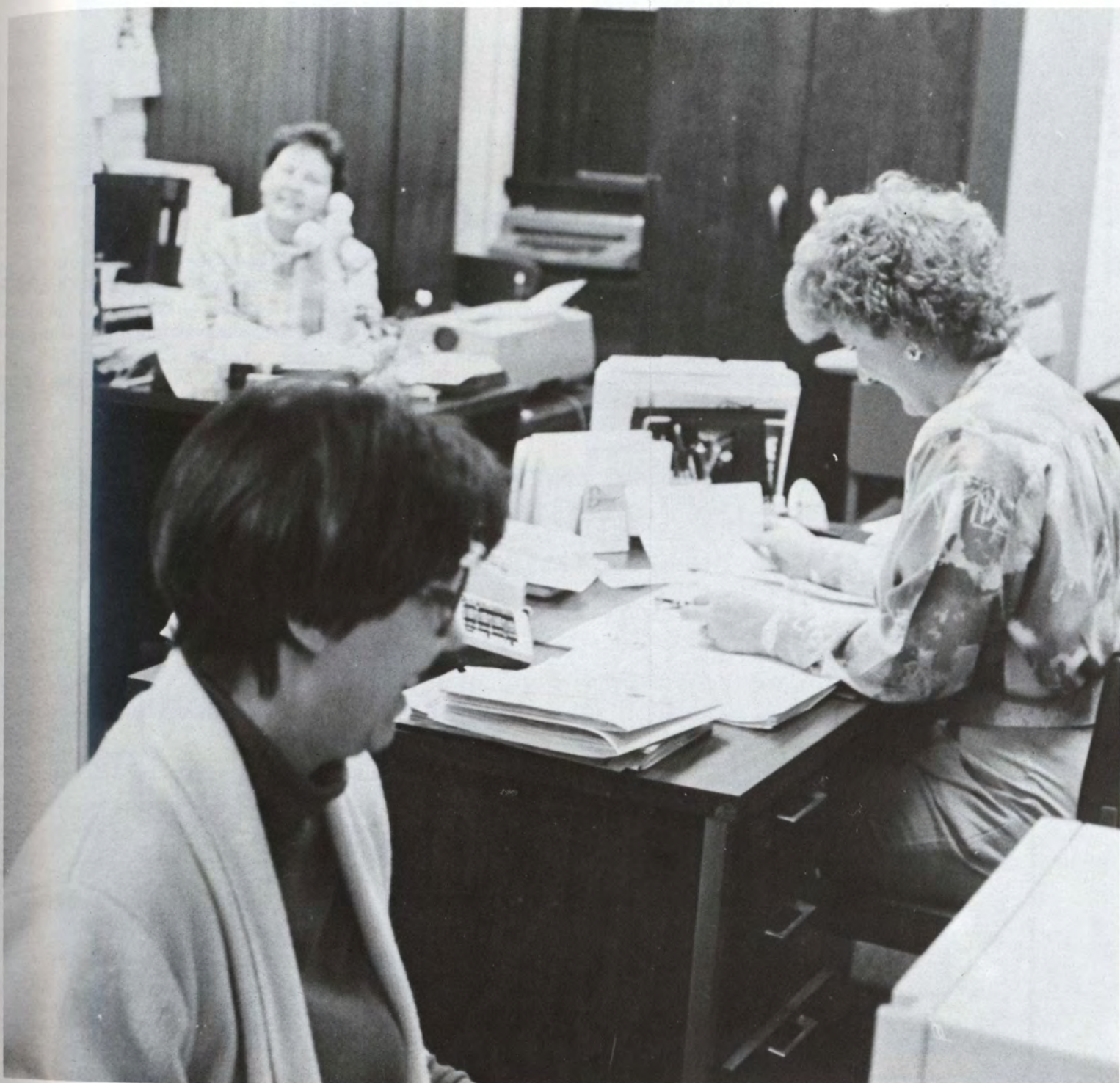
Gloria Koll, Admissions, Switchboard . Mrs. Donna Lahn, Office Coordinator, Student Services . Mrs. Norma May, Secretary . Bottom Row: Mrs. Marlene Hudson Moon, Associate Registrar . Mrs. Marlys Nagel, Assistant Cashier, Business Office . Jeri Nelson, Assistant Accountant and Payroll . Below: Miles Patton III, Head Custodian, Commons , is always a familiar person in the commons.



Top Row, left to right: Tim Orwig, Director of Learning Center . Janice Peterson, Secretary for Continuing Education . Herman Schultz, Food Service Director . W. J. Seewald, Director of Admissions and Records . Bottom

Row: Leanne Simmons, Campus Minister . Terri Skalla, Assistant Dean of Student Services, Director of Housing . Dr. Glenna Tevis, Director Early Childhood . Alice Villone, Director of Financial Aid .





Not Your Common Commons . . .

Common ground for everyone is the Commons building. It houses the Marriot Food Service, the Bookstore, Buckinghams, Religious Learning Center, CBC Programs and Activities, Post Office, Nurses Office, Sioux Yearbook, Collegian Reporter, Student Government, Rec Center, and the commuters

lounge. The Commons has everything.

Pictured below is Lucille Hinders, the Bookstore Manager. Retirement has made this year her last with Morningside College, and she will be greatly missed in the Commons building.

Pictured Bottom right: The Commons Staff: Seated(left to right): Ber-

nice Lundquist and Ed Lundquist, *Post office managers* . Standing: Kent Kennedy, *Director of Programs and Activities* . Marsha Newman, *Commons Secretary* . Louise Peterson, *R.N.*, and *Student Health Director* . Miles Patton III, *Head Custodian* .



Minimag Minimag Minimag

Morningside Attracts Them All!

Several of Presidential Candidates visited the Morningside College campus this year. Among the Candidates were: Vice President George Bush, Rev. Jesse Jackson, Jack Kemp, Paul Simon, and Dick Gephardt. Each of their stands on various topics are summarized below.

Jackson called for leadership that would lead our country in a new direction. He used VCR's and B-1 bombers as an example. "We make what nobody buys. That's why we have a deficit," he said. Jackson added that the U.S. has become too dependant on foreign energy and foreign money. "Our economic and foreign policy have collided and collapsed and made absurd economics," Jesse Jackson said.

Kemp stressed that in his view it is the people that matter. Freedom is conducive to free enterprise, which yields prosperity and wealth. Kemp sees the present as a time of great promise

of prosperity. He wants to initiate a "freedom renaissance" (a rebirth of freedom), and export this philosophy to the rest of the world. He believes there are no limits to what we can do. The strength is there; the leadership is there; it is simply a matter of attitude.

Paul Simon called for strong leadership that would "build a better and brighter future for the children of the United States." Simon believes education should be a top priority of the next president. He said, in education, "we invest to build a better future."

Dick Gephardt called for a new national energy policy. He claims we are too dependant on the middle east and we haven't learned from our past mistakes. He feels we need to take a new approach to defense. He would put an immediate stop to the MX missile program, and stated he is in favor of the small mobile missile.



Pictured Top right: Jack Kemp. Bottom right: Paul Simon. Middle bottom: Rev. Jesse Jackson. Above: Dick Gephardt.

Not So Normal Events

At left: Iowa Congressman, Fred Grandy, visits the campus and talked with students as well as administration. Pictured with Mr. Grandy is President Miles Tommeraasen, Student Government President, Joel Higgins, and Lisa Grubb. Bottom left: The coming HPER building resulted in several houses being either moved or demolished. One such house on S. Glass was prepared and apparently looking forward to the event. Below: Sonia Johnson, a Women's Rights Activist held a controversial convocation. Bottom: Opening of the time vault located in front of the Commons building.



Groundbreaking Ceremony

The groundbreaking ceremony for the HPER building was April 12th. On hand to take part in the groundbreaking was the Morningside Board of Directors, President Tommeraasen, the Mayor of Sioux City, representatives of the Student Government, and other distinguished guests.

No starting date for the construction of the new Health, Physical Education and Recreation building has been set, but it is expected to begin in June after the last house is removed and landscaping is finished.

Morningside College announced plans to build the facility a year ago. Construction has started this spring with the demolition and moving of several houses and site preparation. Bids for the general contractor will be opened shortly, and the project completion date has been targeted for the summer of 1989. The facility will be open for the start of the 1989-90 academic year at Morningside.

The 71,000 square foot facility is de-

signed to enhance academic programming, promote wellness and improve the quality of life of students, faculty and staff of the college.

The complex's numerous features include three multi-purpose courts that can be equipped for basketball, volleyball and tennis and a six-lane, 25-yard pool for recreational and competitive swimming with adjacent whirlpool.

The facility will also be equipped with an elevated three-lane jogging track measuring nine laps to the mile, four racquetball/handball courts and a weight training/body conditioning room. Other features include a multi-purpose lab for dance, aerobics, archery and other class activities, and a non-active lab to support physical education testing and related activities.

Classrooms, lounges, locker rooms with saunas, equipment rooms and spacious office and administrative areas complete the complex.









BUNCHES

PEOPLE

Sioux Yearbook Takes Off!

The 1987-88 Sioux Yearbook took off this year by selling the most yearbooks in the history of the Sioux. 450 copies were sold of the 168 page book, which was printed by Taylor Publishing Company of Dallas Texas.

Besides being enthusiastic, the yearbook staff was also full of great ideas. One of which being the title of our book, "Why Be Normal?". This was definitely not a normal year. Aside from selling so many books, the group pulled in new members of all different ma-

jors, which contributed to the uniqueness of our book. From Theatre and Religion, to Computer backgrounds, our new members brought in new blood.

Not only did our staff work hard, we also had a lot of fun. The staff meetings were a great time to talk and socialize. Our end of the year bash was a cookout at Editor, Val Johnson's house in the country. Where among other silliness, the charcoal grill was kept alight by a propane torch.

Bottom Right: Our Sioux Yearbook staff: Seated (left

to right): Kent Kennedy, Financial Advisor, Chris Belt, Valerie Johnson, Editor, Don Mc Cormack, Copy Editor, Mike Jones, Photography. Standing: Todd Peterson, Photography, Angela Rehal, Laurie Harpenau, Business Manager, Cynthia Stevens, Mary Viz, Doug Proffitt. Bottom Left: Our very own, Don McCormack. Top Right: Chris Belt works on a few sports pages between classes. Middle Right: Patricia Holling, Don McCormack and friend talk before the cook out starts.



KMSC Celebrates 10 Years

Back in the Spring of 1978, Jimmy Carter was President, disco was in, and KMSC began broadcasting from the third floor of Lewis Hall.

Only a year and a half earlier, the entire mass communications department was set up for the first time at Morningside College. The department was funded through a federal grant. The department had hoped for a radio station but the funds were not there. To make things worse, the FCC was holding a license freeze on all ten watt radio stations, which was the expected wattage of KMSC. Mr. Kenneth Gethmann, the president of Gethmann Construction Company, donated the resources needed to do the reconstruction work to the area we now know as the

Gethmann Communications Center. In January of 1977, the FCC freeze was lifted. An application to broadcast was filed. In the fall of that year construction began, and in the Spring of 1978, KMSC was broadcasting.

As for the staff, it was and still is made up of students. The students run the whole show and the faculty advisor only needs to get involved with legal problems. A student holds the position of station manager. He/she is aided by 14 other staff members who hold the positions of: Programming Director, News Director, Production Personnel, Sports Director, and Public Affairs Producers. There are approximately 30 student DJ's.

Article by C.R. staff Report Marla Geary.

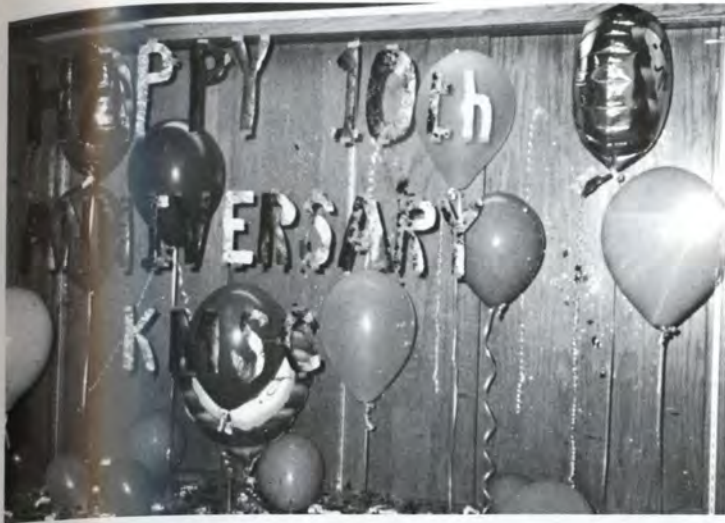
55

Great Year for C.R.

The Morningside C.R., Collegian Reporter had a terrific year. Led by Editor Chris Steinbach and faculty advisor, Max Sharp, the C.R.'s spread of stories grew as well as their enthusiastic staff. Laura Scammacca exceeded the advertising expectations of the C.R. by selling the most ads in the history of the newspaper.

The C.R. staff included: Chris Steinbach, Editor. Laura Scammacca, Business Manager. Ann Trimble, Editorial Assistant. Max Sharp, Faculty Advisor. Julie Lien, Marla Geary, Rochelle Grken, Trudy Moody, Rob Dowd, Perrie Garland, Christopher Rants, Alicia Wessendorf, Nya Kadenge, Mike Thornsberry, Kelly Ashby, Becky Hartsell, Stephenie Palmer, Michael Jones, Todd Peterson, Cam Berteloth, Gary Baker, Diane Niewohner, Dawn Grossnickle, Steve Olson, Tricia Janecke, Susan Schiefelbein, Mike Mc Cune.

Middle Left: Chris Steinbach interviews Presidential candidate, Jesse Jackson on his visit to the Morningside Campus. Bottom Left: Chris relaxes on the staff couch. Left: The C.R. Business Manager Laura Scammacca.





President Works For Students

Joel Higgins, the current President of the Morningside College Student Government, began as one of those freshmen who simply wanted to get involved.

Joel, now a senior majoring in Religion — he views college-level politics as a favorite sort of hobby — is completing his second year as student government president. While some of his accomplishments in office include work on the college's disinvestment and budget policies, Higgins' greatest success has been the realization of his initial desire: an effective student government. By working extremely hard to keep in touch with students and their opinions and ideas, Joel has helped make the students' voice a voice to be listened to at the Board of Directors meetings. Only through contact with the constituents can the student government be effective, Joel believes, his roughest opponent throughout has been student apathy.

Pictured above: The 1987-88 Student Government, left to right: Julie Lien, Student Advocate. Stacy Childs, Vice President. Joel Higgins, President. Dan Kruger, Treasurer. and Angela Dennis, Secretary. Picture top right: The last meeting of the Student Government Senate consisted of an ice cream sundae party. At right: Front row, left to right: Dr. Carolyn Rants, Dorothy Knee. Row 2: Melanie Thomae, Abby McMeekin, Scott Holtz, Jerry James. Row 3: Lanette Pollock, Stacy Childs, Mary Viz, April Hlad, Dave Willett. Back row: Angela Dennis, Julie Lien, Joel Higgins, and Michelle Muerer.





CBC — The Heartbeat of Morningside's Fun!



CBC Programs and Activities Council, pictured right, sponsors and organizes activities for Morningside College. Included in the events they've sponsored are: T.G.I.F. dance, Halloween Dance, Daytona Beach, Movies, Commedi-ans, Jugglers, to name just a few.

The Council consists of nine chairs led by Vice President of Student Government, Stacy Childs, and

Advisor, Kent Kennedy. The chairs are: Marla Geary, *Publicity Consultant*, Erica Gunderson, *Secretary*, Dan Kruger, *Treasurer*. Laura Scammacca, *Live Music*, Gerry James, *Films*, Neil Morenz, *Rec Center*, Cory Roberts, *Ideas and Issues*. Kevin Hedemark, *Outings*, Doug Martin, *Variety Entertainment*. Pictured at left.

57



Ambassadors

MC's Greeting Card

Morningside Student Ambassadors were active on campus this year, showing prospective students our campus. Led by Lora VanderZwaag, the ambassadors are a select group of students, enthusiastic about Morningside. Since they represent the college to High School students, they must have a good understanding of every department on campus.

Pictured at right: Seated left to right: Suzie Galles, Barb King, Jodi Dorn, Cory Roberts. Standing: Brenda Wetherall, Robin Mead, Shelley Klein, Sara Ulven, Russ Brownlee, Mike Tramp, Julie Negus, Neal Morenz, Amy Gerking, Kyle Ellerbeck, Shelley Ashley, Darren Lee, Elaine Palmberg, Anne Reed, Ryan Larsen, and Dave Reed.



Pictured bottom right: All the new and old student Ambassadors get together for their end of the year bash at the 20th.



Pictured at left: Julie Negus gives a tour of Morningside to a prospective student.

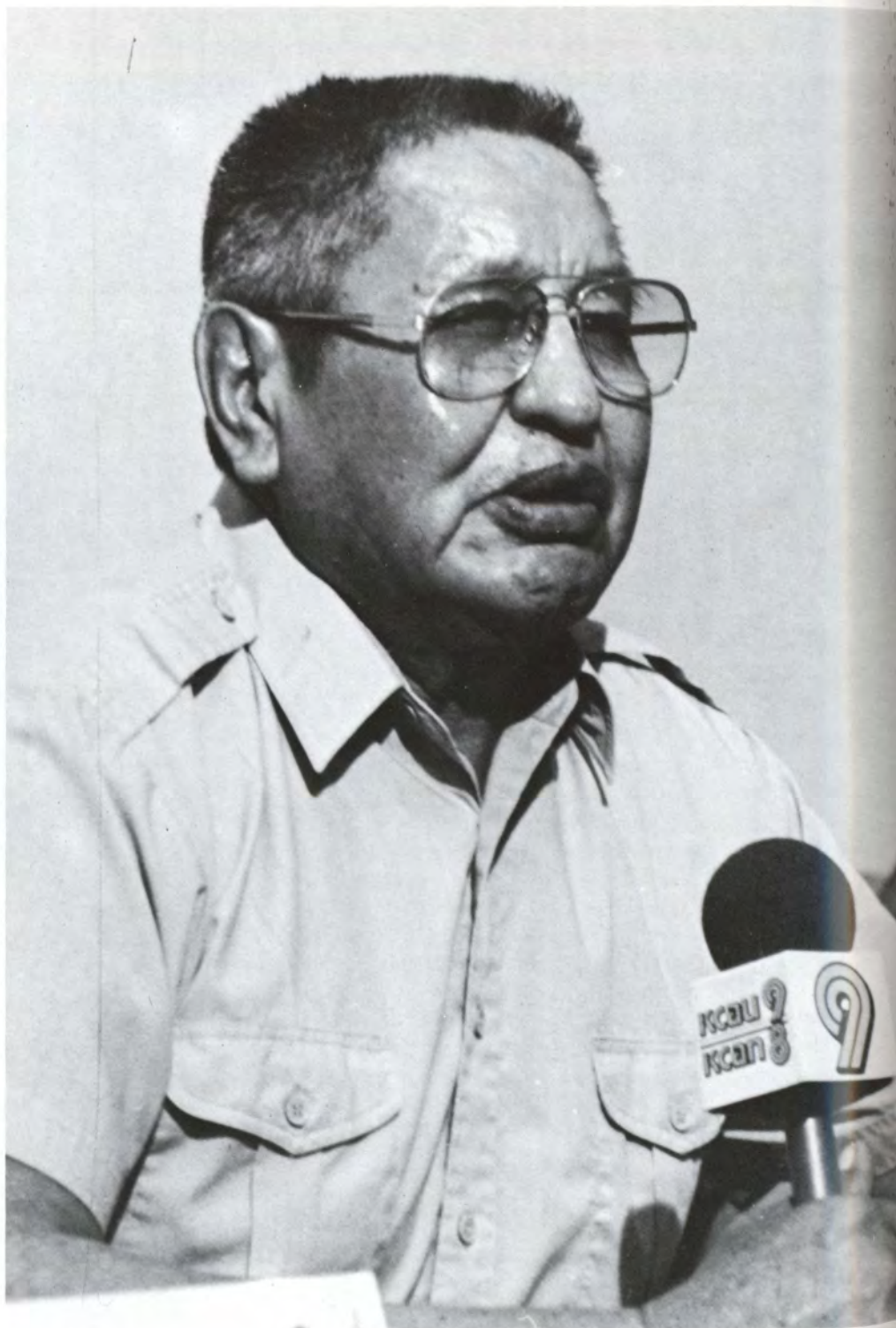


Indian Alliance Club

The American Indian Alliance Club is an Indian Student organization formed to promote Native Cultural awareness on the Morningside College campus and in the community. Each year the club sponsors Indian Awareness Days' activities to provide social and learning experiences related to Native Americans. All year the club is involved in fund raising through bake sales and raffles. The club not only promotes cultural awareness, but also is a vessel for socialization among its members.

The club has open membership to all Morningside College students.

Pictured at right: Chuck Raymond talks about one of the American Indian Alliance Club projects on the channel nine news.





Religious Groups

Fun, relaxing, rewarding, informative, inquisitive, mind boggling, caring, loving, touching, musical, joking, humorous, satisfying, incredible, exciting, effecting, fulfilling!! For who? For anybody! What is it? Fellowship of Christian Anybodies!! Everyone who does anything is welcome to come. Come and join in the

gathering of our Lord Jesus Christ.

The F.C.A. is not the only religious organization on campus. Among others are: InterVarsity Christian Fellowship, Church Explorers, Newman Club, and Koinonia.

Pictures for these groups were unavailable.

International Club

Pictured above. Dr. John Doohen, faculty advisor.

Nurse's Club

Morningside Student Nurses' Club (MSNC). An organization for nursing students whose purpose is to encourage and promote participation in health related community activities and to provide a voice for student ideas that may benefit the nursing education program.

This year the sixth annual Maud Adams Nursing Research Day was held on April 21 in the Randolph Room of the Commons Building on the Morningside College campus. Registration began at 8:00am with the final discussion at 1:45pm.

The program was initiated in 1983 as a tribute to Maud Adams, former chairperson of the department of nursing at Morningside College. Prior to her nine-year tenure at Morningside, Adams served as a staff nurse, instructor, and administrator in various public health agencies and schools of nursing.

The workshop was de-

signed to provide nurses with an opportunity to explore the concept of research and its critical role in the planning and evaluation of nursing in today's world; to learn teaching strategies for various client age groups; and to explore play therapy as an integral component in the care of the hospitalized child.

Verna Welte, R.N., M.A., and Vice President of Nursing at Marian Health Center was the featured speaker for the luncheon which began at 12:15.

Over fifty different presentations were given on topics varying from the psychosocial needs of parents with hospitalized children to crime prevention tips for the disabled. The day's sessions were led and instructed by the Morningside College faculty, register nurses from the Greater Siouxland Community, as well as senior nursing students.



S.M.E.N.C.

SMENC, Student Music Educators National Conference, is the college student branch of MENC, a voluntary, non-profit organization representing all

phases of music education in schools, college, universities, and teacher-education institutions. Pictured above is Karla Rickett.



Alpha Psi Omega

Alpha Psi Omega is a national honorary dramatics fraternity which seeks to promote, encourage and develop the art of theatrical experience. Full-time students who maintain a 2.0 grade point average, participate in play productions and who have done work of such merit as to receive membership points are eligible for membership. Picture of group not available.

Alpha Mu Gamma

This national modern Foreign Language Fraternity is for honor students who excel in the study of foreign languages. Members are chosen by department faculty.

The Beta Psi Chapter of Alpha Mu Gamma, the National Collegiate Foreign Language Honor Society, exists to recognize achievement in and promote the study of foreign languages.

Sigma Pi Sigma

Sigma Pi Sigma is the national physics honor society which seek to recognize academic achievement among students of physics. To be eligible for membership, students must have completed four semesters of coursework (including one intermediate course in physics) and be in the upper one-third of their class.

Mu Phi Epsilon

Mu Phi Epsilon: A National Music Fraternity for Women, Mu Phi seeks to promote musicianship, scholarship and the advancement of music in America. To be eligible for membership a student must have completed one

semester of coursework with GPA of 2.75 and a 3.0 in music or have completed two semesters or more while maintaining a GPA of 2.00 with a 3.0 in music.

Picture was not available.

Kappa Delta Pi

Kappa Delta Pi is the national honorary for education majors which seeks to encourage scholarship, high personal standards, improvement in teacher preparation, and contributions to education. To be invited into membership in Kappa Delta Pi, students must rank in the upper 1/5 of their class having maintained a grade point average of 3.5 or better and must have completed 12 hours of professional education courses.

Members of Kappa Delta Pi included: Lowell

Ernst, Mary Hansen, Patricia Hoffman, Barbara Ketelsen, Mary Kottman, Patricia Mc Caulley, Lynelle Schwien, Gary Shupe. New initiates included: Kim Ashby, Ann Blum, Charlotte Braby, Lanette Curry, Debra Denney, Leslie Ellerbeck, Teresa Ferdig, Roxanne Geerdes, Paula Hunter, Carol Krieger, Lori Ludwig, Julie Negus, Elaine Palmberg, Amy Peterson, Suzanne Torrey, Paulette Wahl, Diane Woodford.

Picture was not available.

Psi Chi

Psi Chi consists of Psychology majors. It is a national honor society and members must have a minimum grade point average of 3.0. The purpose is to foster both social and academic exchanges between individuals whose major field of study is Psychology. An initial lifetime membership fee of \$30.00 is required with a smaller fee requested each additional year to support the local chapter. Student qualifying for membership will be notified and an initiation ceremony will be held early in the fall semester.

Psi Chi members included: Joan Burke, Lanette Curry, Terri Fischer, JoAnn Forney, DeeDee Harm, Ron Larson, Lori Ludwig, Vicky Miller, Linda Munos, Carolyn Phillips. New Initiates included: Stan Cain, Amy Gerking, Erica Gunderson, Barb King, Linda Proctor.

Pictured at right seated (left to right): Barb King, Stan Cain, Amy Gerking (new initiates). Middle row: JoAnn Forney, Terri Fischer, Joan Burke, Carolyn Phillips. Back Row: Lori Ludwig, Larry Sensenig, Ron Larson. Not pictured, Linda Proctor.





M'Side Students Experience Chicago

A 4:30 a.m. departure time began a four day journey to Chicago for a group of Morningside College students. The Morningside Art Department has scheduled this trip continually for the past sixteen years. Many art majors and minors have taken advantage of the Windy City's possessions year after year, one of which is Robin Schmitz. "Each year I go I get something different out of Chicago. I think it's great being able to experience the power of Picasso right before your eyes over the subtle power of a textbook reproduction," Schmitz said.

Points of interest in Chicago never

just begin and end. There is a continuous route of curiosity and excitement. The Sears Tower for example is the the tallest all-electric building in the world. The Illinois State Building is of post modern architecture and is constructed completely out of glass. "It looks like a giant space ship," comment art instructor John Bowitz. Bowitz, Frank Breneisen, and David West were all very knowledgeable about the city. Ironically, each are originally from the Chicago area.

An experience West commented on as giving reach to an Iowan's awareness was a performing arts theatrical

play the department had scheduled. The performance absorbed at the Randolph Street Gallery was series titled Works on AIDS. W.O.A. is exploring the impact of the AIDS crisis on their own lives and contemporary society. Chicago's society is quite different from our own. It provides fast paced pedestrians, rumbling subways, towering masses of architecture, and much, much more.

The art is moving and so is the city. Chicago is great.

Article by Sue Schiefelbein, CR staff reporter.

Omicron Delta Kappa



66

Morningsider Honored by ODK

Senior Terri Fischer has received the honor of ODK Province XI Leader of the Year. Linda Belote, Faculty Province Director, attributes Terri's involvement off campus, particularly with the Siouxland Council of Sexual Assault and Domestic Violence, to her announcement of the award from among the nominations received from the nine Circles that make up the six state Province.

Fischer has been volunteering eight hours a week for about a year answering the crisis line, talking with the women and children in the shelter, and driving them to the grocery store. Preparation for the position involved a forty hour training period.

"I'm honored by the award," said Terri.

"ODK is a great organization. I think we're the most active organization on campus. We sponsor many worthwhile events," added Terri.

Currently, she is an intern at Gordon Chemical, is president of the Morningside ODK Circle, President of PsiChi, and a past ODK recipient.

Omicron Delta Kappa (ODK) is a national leadership honor society for college men and women. It was founded to recognize and encourage superior scholarship and leadership by individuals of exemplary character. Membership in ODK is a mark of high distinction and honor encompassing students, faculty, and administration. To be considered for membership students must have at least junior status with a 3.00

GPA or above. Selection for membership is based on scholarship, involvement and character.

Pictured Above: Front Row (left to right): Mary Hansen, Lowell Ernst, Terri Fischer, Elaine Palmberg, Derek Jacobsen, Sara Ulven. Row 2: Christopher Rants, Lanette Pollock, Shelley Klein, Barb King, Corey Roberts, Todd Koos, Abby Mc Meekin, David Mc Alpine. Row 3: Bruce Forbes, Carolyn Rants, Marty Knepper, Nya Kadenge, Michael Powell, Dave Reed, Erica Gunderson. Row 4: Stacy Childs, Danelle Verhoef, Carol Jalas, Suzanne Galles, Julie Lien, Ben Cox, Sherri Mc Ginnis. Row 5: Deb Speigel, Shelley Ashley, Marla Geary, Mary Kottman, Jim Hopkins, Matt Carney, Dan Kruger.



Phi Beta Lambda

Phi Beta Lambda, picture above, the college chapter of Phi Beta Kappa, is a National Business Fraternity. With the purpose of giving Business majors and minors a chance to learn how to lead and participate in group discussions, preside at meetings and conferences, work effectively within committees and most important, engage in practical problem solving and decision making. April 8 & 9, Phi Beta Lambda of Morningside College was host to the 1988 State Leadership Conference. PBL chapters from twelve Iowa universities, colleges, and community colleges attended this annual event.

Competitive events were one of the many activities. Each chapter provided members to compete in one or more of the 35 business related events and activities, such as public speaking, economics, and marketing. Some events were

for the individual and some for a team. At the closing banquet, awards were given for the top five in each category. A few PBL members from Morningside College placed within the top five for their event. They are as follows:

Sue Cam, Second Place, Job Interview.

Tammi Gagnon, First Place, Accounting 1.

Mike Goth, First Place, Economics.

Michelle Hinrichsen, Fourth Place, Computer Concepts.

Diane Kutz, Third Place, Marketing.

Dave Reed, Third Place, Management.

Mike Tramp, Fourth Place, Finance.

Pictured above (left to right): Mike Tramp, Dave Reed, Diane Kutz, Pat Lappe, Peggy Pudenz. Other members included: Sue Cam, Tammi Gagnon, Mike Goth, and Michelle Hinrichsen.

U.P.A.

Undergraduate Psychological Association: UPA; is an academic and social organization designed to increase interaction, foster professional standards, and develop interest in the many areas of psychology for student who are either majors or minors. Picture was not available.

Sigma Tau Delta

Sigma Tau Delta: This organization is a national English fraternity interested in promoting activities concerned with literature, writing and creative thinking. Membership requirements include three courses in English beyond Composition and general GPA of 3.00 or more. Picture was not available.



TaeKwondo Club

68

Above: Derek Peterson demonstrates a defensive stance. Top Right: (left to right): Todd Peterson, Rod Cameron, Derek Peterson. Right (left to right): Rod Cameron, Zuraini Mat Zain, Ryan Larson, Derek Peterson, Yusrim Abdul Rahman, Todd Peterson, Hamizah Abdul Hamid.





69



B.S.U. Sponsors Awareness Week

The Black Student Union of Morningside College kicked Black Awareness Week off with a bang on Monday, February 15. The Black Student Union conducted a program hosted by Morningside student Anthony Dancer. The program consisted of three skits and

a panel of guests to answer questions on racism.

Pictured above and left: Front row, left to right: Mary Viz and Morgan Walker. Back row: Tymme Patterson, Jeff Smith, Todd Speight, Todd Smith, and Anthony Jones.

Chamber Orchestra

Chamber Orchestra is a group of musical student directed by Joseph Shufro. Concerts are given by them two to three times each semester with the most mem-

orable performances being the Christmas Convocation. Pictured at right is Paula Puckett, second string violinist.

Concert Band

Pictured below: The Concert Band prepares for their concert on the green, on the lawn in front of Roadman Hall.

Marching Band

The Marching Band, under the field direction of Tom Gerking, and the Colorguard, under the direction of Gretchen Chamberlain, once again entertained the crowd at the Chief's football games during pregame and half time. They also marched in parades for

Homecoming and the Shrine games.

The band put in tremendous amounts of time in order to present an exciting how for Morningside College, and was rewarded with the appreciation of the fans.

Marching Band picture was unavailable.





Concert Chorale

Pictured above. Harry Moon, director .

The Com "PLEX"

Although the com "Plex" is the farthest dormitory from the commons, the dorm makes up for that in a lot of little ways. The Plex houses the Delta Sigma Phi Fraternity, and also have several music students, which is handy being located next to the Eppley Auditorium. The dorm still has a

lot of diversity however in the students who live there.

At Right: Paul Kynard poses with a star at the Plex Christmas Party. Right Bottom: Opening their Christmas gifts, left to right: Peggy Pudenz, Theresa Stickrod, and Gwyndolyn Young.





ROADMAN HALL



74 Top Right: Roadman Hall Council, left to right: Derek Jacobsen, Kyle Ellerbeck, Chris Steinbach, Bill Hartwig, and Mike Powell. Above: Just foolin' in the hallways, Derek Jacobsen and Joe Mlnarik. Right: Part of the Roadman clan; Row 1 (left to right): Todd Smith, Johnnie Brown, Jeff Smith, Joe Mlnarik. Row 2: Matt Sturdevant, Kevin Nieuwsma, Shad Kroeger, Morgan Walker. Row 3: Scott Gustafson, Steve Seybert, Tim Mc Cabe, Shawn Smeins, Chad Smeins, Curt Denker, Jason Koetter and Dan Miller.





75

The Chilly Side of Morningside

Ground Hogs

WNW Ground

WNW Ground floor: Jennifer Young, Julie Smith, Traci Thompson, Elaine Vaner Broek, Pam Reis, Susan Barker, Teresa Ferdig, Anita Blue, Dong Tong, Kim Meyers, Souchin Cam, Amy Howell, Rebecca Hartsell, Michelle Schuler, Karen Hokenson, Valerie Konkell, Diane Niewohner, Salina Khalid, Junko Higuchi, Carla Hansen, Yusrim Abdul Rahman.



Under the Boardwalk

WNW 1st floor: Patricia Holing, Penny May, Rhonda Evilizer, Shelly Ashley, Amy Cunningham, Andrea Pohlman, Linda Larson, Julie Bouse, Pam Schram, Becky Nelson, Marilynn Harrington, Teresa Crippen, Melissa Will, Cecile Lemperiere, Heidi Gonnerman, Linda Proctor, Lucinda Neville, Danelle Ver Hoef, Cheryl Dahl, Diane Kutz. Pictured at right: Shelly Ashley, R.A. for Under The Boardwalk. Group picture was not available.





Boardwalk NWWing 2nd floor

Pictured left: Seated (left to right): Kari Woodworth, Carita Ellerbeck. Middle Row: Cathy Mc Mullen, Angie Bobolz, Lynelle Schwien, Sue Case. Back Row: Cristin Cantrell, Kristen Van Berkum, Mary Hansen, Kristi Jones, Tricia Mc Caulley. Not pictured: Christine Stalzer, Jill Seymour, Anne Reed, Trisha Mohr, Kelly Reeves, Julie Harpenau, Sheli Livengood, Kim Ashby.

High Lifers . Not pictured: Karlene Webb, Brenda Broveak, Kim Peterson, Andrea Anfinson, Sherri Mc Ginnis, Stacey Spotts, Lea Boucher, Fawn Schwartz, Keey Hopp, Roxanne Smith, Crystal Bunge, Laurie Harpenau, Norayia Abdul, Zuraini Mat Zain, Sabrina Hey, Stacey Alfredson, Heather Murkins, Kathy Aardema, Angie Dennis.

77



Mountain Top

WOW 3rd Floor

Pictured right (front row, left to right): Jodi Skoglund, Jodi Boyer, Lisa Bergholt, Ginger Crispin, Tami Hedges, Karla Rasmussen. Upside down row: Patricia Janecke, Paula Puckett, Deb Hudson, Monique Juarez, Robin Korthals. Not pictured: Thias Bronner, Lynette Curry, Heather Dietz, Julie Evilsizer, Stacy Hildreth, Kari Hildring, Pam Holstad, Shelly Klein, Kelli Thomas, Colene Schaaf.



78

WOW 2nd Floor

Pictured Right, Seated (left to right): Paula Hunter, Carolyn Lamaak, Carol J alas, Kaye Menning. Back Row: Rochelle Gerken, Kim Anderson, Jill Cork, Erica Gunderson. Not pictured: Tammy Newell, Sonya Terry, Delaine Thompson, Julie Swalve, Lorraine Watts, Dawnetta Weinreich.





The Deck 3rd Central

Above Seated (left to right): Marla Geary, Gerry James, Loni Dickerson, Connie Treptow, Maria Hay. Row 2: Cindi Stevens, Amy Peterson, Judy Pauling, Lanette Pollock, Sue Schiebelbein, Rhonda Cleveringa, Jayne Reindal. Row 3: Connie Root, Deb Rothe, Kristin Fischer, Andrea Lindgren, Tina Joens, Cindy Vaupel, Julie Boles, Mary Viz, Jennifer Hoefert, Lisa Bandy.

Suite Street EOW 1st Floor

Pictured right, Front row (left to right): Stacey Doeden, Sara Ulven, Stacy Leu. Row 2: Tonia Arehart, Julie Serck, Carlynn Baerenwald, Vicki Rahbusch. Row 3: Susan Stock, Rochelle Stock, Laurie Kingbury, Michelle Johnson. Not pictured: Shelly Albers, Kathy Bellenger, Susie Galles, Beth Gawley, Joanne Gawley.

Sweet Hearts

West Old Wing(1st)

Not pictured: Lori Rider, Theresa Ryther, Julie Etter, Brenda Schultz, Michelle Carter, Stephanie Kohnen, Connie Schubert, Jana Burke, Jessica Jahn, Jenny Spiegel.

East Old Wing

3rd floor

Pictured Right, front row(left to right): Vicki Marshall, Elaine Palmberg, Kelly Ashby, Rhonda Mc Kee. Middle Row: Shirley Goetsch, Cindy Stevens, Dee Dee Harm, Stacy Childs, Laura Scamacca, Trudy Moody. Back Row: Amy Gerking, Courtenay Hollander, Jodi Sohn. Not pictured: Deanna Fredinberg, Dawn Grossnickle, Stacy Montagne, Rachel Santema, Kim Wesseln.



80

East New Wing

Pictured Right, seated(left to right): Mark Cooper, Jeff Myrick. Back Row: Brian Keeney, Todd Geerdes, Mark Bonnstetter, Chris Cassaday, Tony Greer, Brad Barkema, Chris Kuhlman, Lowell Ernst, Joel Klatt.





East New Wing

Pictured left Back Row (left to right): Monte Christensen, Perrie Garland, Horacio Arrechia, Tom Gerking, Dong Yoon Suh, Doug Proffitt, Jay Lundt, Gary Baker, John Wieland, Neal Morenz, Chris Rants. Middle top to bottom: Rick Amos, Cory Roberts. Not pictured: Dale American Horse, Kevin Freeman, Joseph Hoffman, Scott Holtz, Don Mc Cormick, Mick Port, Chris Riedesel. Above: Horacio Arrechia waits for the hall to get together for the hall pictures.



The Jungle East New Wing (2nd)

Pictured Left seated (left to right): Jeff Birchard, Roger Sopher, Brett Sims, Stacy Hand. Back row: Anton Jelinek, Pat Lappe, Dave Nash, Kirk Ridout, Ryan Buell, Bryant Mutchler, Vernon Meyer. Not pictured: Eric Anderson, Daniel Burow, Randy Eckmann, James Feddersen, Mike Kasch, Willie Kitto, David Meiske, Joey Sanvig, Jeff Taylor, Nick Votek.

Delta Sigma Phi Alpha Omega Pi Alpha Delta Pi Alpha Tau Delta

82 AOPi's Notes

The Theta Chi Chapter of Alpha Omicron Pi hosted a Chapter Consultant, March 26-31, 1988. This young woman is a trained resource person, and a liaison between the local chapter and the international organization. Ginger Mylander, from Rockville, Maryland, is one of eight recent college graduates serving AOII in this position.

Chapter consultants work with collegiate chapters and colonies of Alpha Omicron Pi, emphasizing community and campus involvement, leadership, and scholastic achievement. They were prepared to share new ideas with Alpha Omicron Pi members across the continent.

This year we would like to welcome: Lisa Swoboda, Jeri Sterges, Julie Etter, Kim Hahne, Kelly Loftus, Coleen Schaaf, Robin Wells, LeeAnn Dula, Brenda Bush, Amy Howell, Tinal Joens and Delaine Thompson.

Love and Roses,
The Women of
ALPHA OMICRON PI





ADPi's Help Ronald McDonald ⁸³

Members of the Morning-side Alpha Delta Pi Sorority put together an Easter surprise for the children and families staying at the Ronald McDonald House in Toronto, Canada. Nationally, the Alpha Delta Pi Sorority adopted Ronald McDonald House as it's philanthropy in 1979. Since then the members of the sorority's 135 chapters and alumnae have raised more than \$1 million to support the Houses. Chapter members who have Ronald McDonald Houses located close by also personally volunteer their time through such activities as babysitting, cooking meals and helping with spring clean-

ing. This year the sorority decided to play Easter bunny to the Houses.

"We've adopted the Ronald McDonald House in Toronto, Canada, because there's no ADPi chapter in Toronto, and we don't have a House here in Sioux City," said Jodi Dorn, service project chairman of the M'side ADPi chapter. "We sent an Easter shopping bag full of Easter candy and toys to remind the children and families in the Toronto House that someone is thinking about them during the Easter holiday. The children can share in some of the fun traditions they would normally enjoy at home," Jodi added.

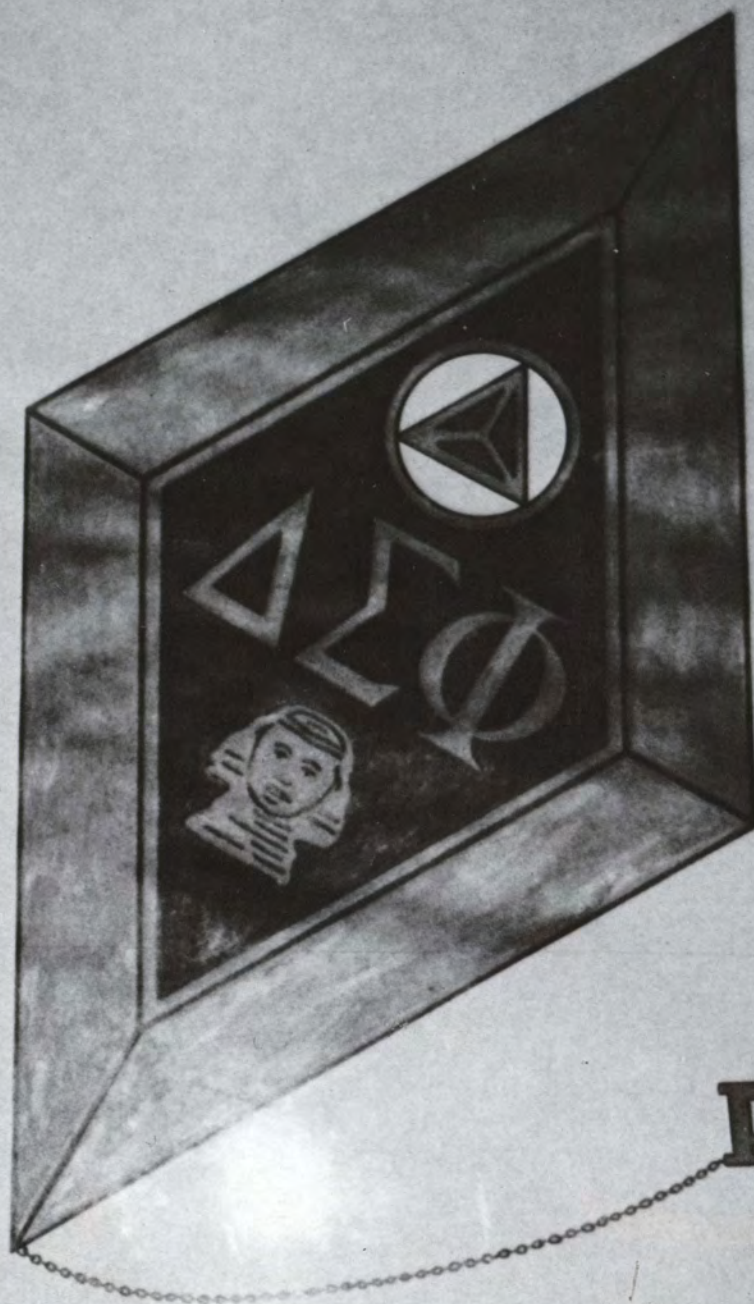
DELTA SIGMA PHI

84



Dave Archer, right, at his cowboy best. This years costume party brought out all kinds.





Ψ





LIVES !

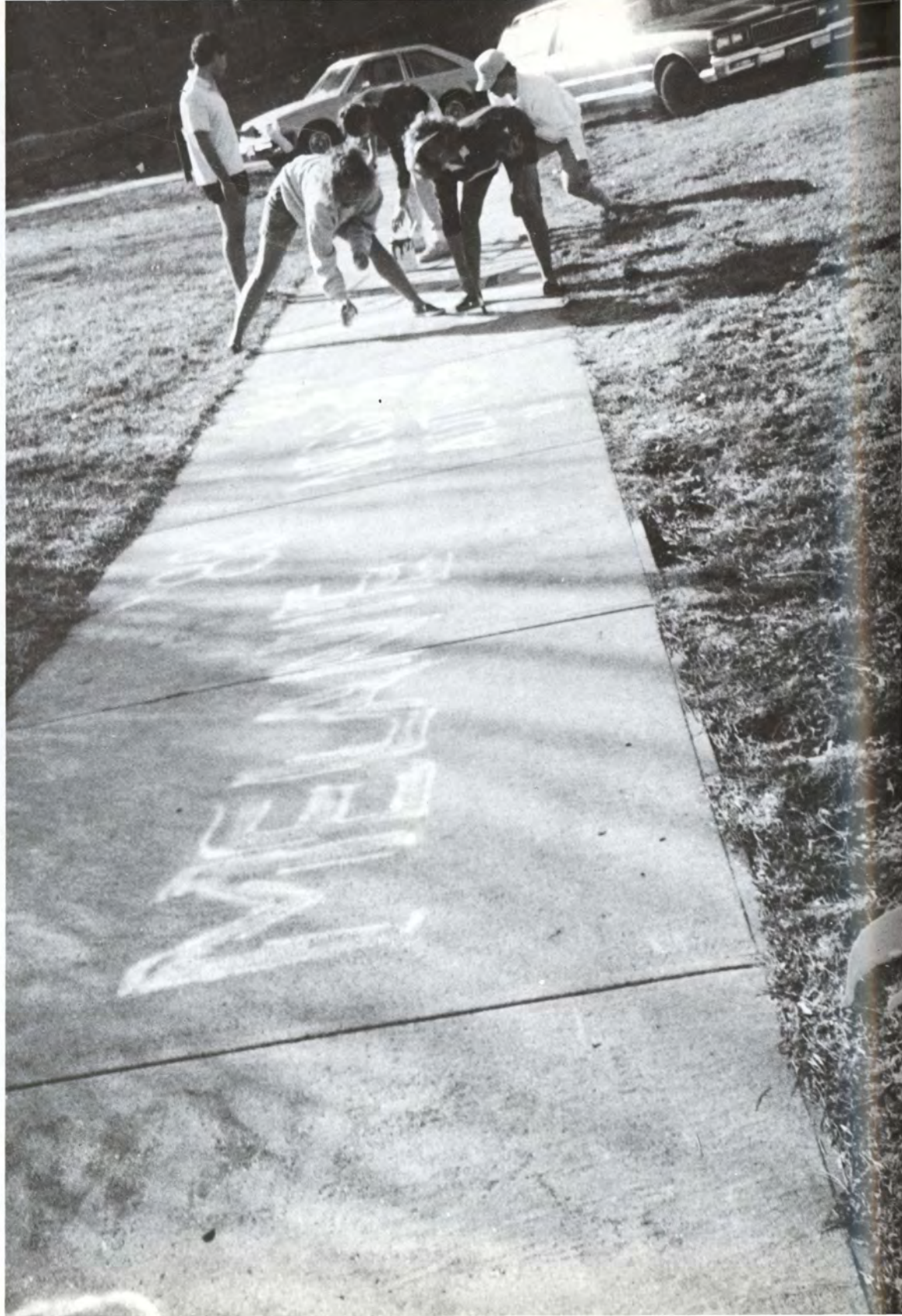
87



The Delta Sigs were pleased to announce the Fall '87 Pledge Class: Frank Bilello, Dave Bohlke, Rob Desotel, Tim Ferguson, Dave Madsen, Chuck Meyer, Zane Sanchez, Jeff Santi, Glenn Vann Horssen, and Nick Votek. Encourage these men as they pursue the pearl of great price.

Above: Wade Welding and Doug Beauchene celebrate the season in their own way, and left: Kent Godbersen, Steve Fry, and Rob Desotel in their own.

ALPHA DELTA PI





Alpha Delta Pi has been very active this year. For the first time in several years we held Formal Rush in the fall. This was an exciting time for the sorority because we met a lot of incoming freshmen women and pledged several of them.

Of extreme importance to ADPi is our philanthropic project, the Ronald McDonald House. This year we had several fundraisers for this project including raffling off a Morningside Basketball and our Scott Paper Products promotion. We also made an Easter basket full of toys and candy which we sent to the Ronald McDonald House in Canada.

The members of ADPi are involved in almost every activity on Morningside's campus making us one of the most ac-

tive organizations both individually and as a group. Special mention should be made to Alicia Wessendorf and Michelle Bluford who were both chosen as homecoming attendants, Alicia, again, for being the Port of Sioux City Rivercade Queen and Debbie Spiegel who was nominated as a Greek woman of the year.

Our members have been working hard scholastically receiving the scholarship trophy again in the fall having the highest grade point average of all four houses. Alpha Delta Pi has been growing in numbers and continues to be a vital part of the successful Greek system at Morningside.

Article by Julie Negus, President of ADPi, 1988.





91



Left: Posing in the ADPi hall are as follows: Kneeling, Sara Henrich, Melanie Thomae, Toni Holloway. Row 2: Laura Rehder, Michelle Meurer, Julie Negus.

Seniors Are Definitely Not Normal!



92





SENIOR CITIZENS

Debra Marie Adams
Nursing
Mary J. Ahlquist
Criminal Justice
Douglas Ormond Anderson
Business Admin.
Todd Norman Armstrong
Computer Science

Michael Martin Bahrke
Recreation Management
Daryl D. Bales
History Teaching
Randee Jean Ball
Graphic Arts
Susan Luray Barker
Music Education

Julie A. Bauerly
Criminal Justice
Douglas Lloyd Beauchene
Computer Science/ Mathematics
Kathy Marie Bellinger
Elementary Ed./ Early Childhood Education
Kevin Bembry
Music Education

Kirt LeRoy Bennett
Accounting
Stephanie Ann Benson
Early Childhood Ed./ Elementary Education
Eric Bert Berntson
Business Admin./ Economics
Edward Dennis Betsworth
Physical Ed. Teaching

Diane Ardell Binneboese
Nursing
Jacqueline L. Bitz
Accounting/ Business Admin.
Michelle Angelina Bluford
Music Education
Robert Stephen Boldus
Recreation Mgmt./ Phys. Ed. Teaching





Cheryl Elaine Cantrall
Physical Ed. Teaching
 John Gerard Carey
Music Education
 Gretchen Lynn Chamberlain
Accounting/ Economics
 Monte Spencer Christensen
Drama



Victoria S. Conover
Music Education
 Sharon Kay Crosby
Nursing
 Chris Drew Cuthrell
Business Admin./ Economics
 Cheryl Renee Dahl
Business Admin./ Recreation Mgmt.



Heidi Renae Deen
Accounting
 Heather Eileen Dietz
General Psychology
 Katy Jo Edlund
Physical Ed. Teaching/ Recreation Mgmt.
 Kyle William Ellerbeck
Business Administration



Leslie Jean Ellerbeck
Elementary Ed./ Library Sc. Teaching
 Lowell Everett Ernst
Biology Teaching
 Todd Lynn Ernst
Business Admin./ Economics
 Barbara R. Eveleth
Nursing



Rhonda Kay Evilsizer
Accounting
 Bryce Lee Feldhoff
Business Administration
 Margaret Ann Fenton
Elementary Education
 Terese Jo Fischer
Gen. Psychology/ Religious Studies

Cheering on the CHIEFS!!! (L to R): Patricia Mohr, Dawnetta Weinreich, Carolyn Lamaak, Valorie Uken, Paula Hunter, and Gina Schultd.



JoAnn Kaye Forney
Nursing
David J. Franko
Deanna Jean Fredinburg
Business Admin.
Steve Dean Fry
Business Admin./ Economics



Todd Alan Geerdes
Business Education
Kent Dana Godbersen
Business Admin./ Economics
Heidi S. Gonnerman
Accounting
Michael E. Goth
Agribusiness/ Economics



Karen Lynn Gries
Elementary Ed./ Special Education
Christine A. Griffin
Lisa Ann Grubb
Mass Communication
Mary Kathryn Hansen
Elementary Ed./ Early Childhood Education





DeeDee Ann Harm
Biology
James Craig Henrich
History Teaching
Scott Thomas Henrichsen
Business Admin.
David Joseph Hickey
Agribusiness



Joel Robert Higgins
Religious Studies
Dan D. Hiserote
Computer Sc./ Mathematics
Patricia M. Hoffman
Biology Teaching
Gary E. Hogue
History Teaching



Kelly Collette Hopp
Economics
Earl Y. Horlyk
Political Science
William Anthony Ivey
Physical Ed. Teaching
Derek Scott Jacobsen
Business Admin.



Barbara Lynn Jensen
Art Teaching/ Special Education
Valerie Beth Johnson
Computer Science
Jacqueline Rae Jones
Business Admin./ Industrial Psychology
Kristi L. Jones
Elementary Education



Matt Lee Jurgens
History Teaching
Fred Carl Kamm
Business Admin./ Economics
Barbara L. Ketelsen
Elementary Ed./ Special Education
Hyeong Wook Kim
Computer Sc./ Mathematics

Hyung-Chen Kim
Computer Science
 Kwang Seop Kim
Business Admin./ Mgmt. Info. Systems
 Laurie Ann Kingsbury
Special Ed./Elementary Education
 Corrine Sue Kinney
Mathematics Teaching



Curtis Dale Klaahsen
History Teaching
 Shelly F. Klein
Biology
 Terry S. Knaack
Business Admin./ Biology
 Jill Erin Knapp
Psychology/ Sociology



Todd Douglas Koos
Biology
 Mary Kay Kottman
Music Education
 Jayne Lucille Kraft
Sociology
 Sara Kruetz



Diane Marie Kutz
Business Admin./ Industrial Psychology
 Carolyn Maria Lamaak
Elementary Education
 Scott Allan Larson
Business Education
 Ronald Blake Larvick
Computer Science



Chen Hua Liang
Accounting
 Julie Kay Lien
Biology
 Muh-Shiarn Lii
Business Administration
 Tom Boun Lo Van
Interdisciplinary



Tou Kham Lo Van
Mathematics
 Lori Lee Ludwig
Spanish and Psychology Teaching
 Arnold C. Mallory
Biology Teaching
 Eileen Louise Malone
Business Administration

Norliza Mat- Isa
 Tim J. McCabe
Biology Teaching/ Physical Ed. Teaching
 Patricia Lyn McCaulley
Elementary Education
 Arlys Johnson McCorkingdale
Early Childhood Ed./ Elementary Education

Tracey Dee McCreary
Business Administration
 Dori Faye McIndoo
Computer Science
 Robert Paul McMullen
Computer Science
 Juleen Kay Meints
Biology Teaching

Kimberly Jane Meyer
Nursing
 Tara Ann Meyer
Elementary Ed./ Special Education
 Daniel James Miller
Spanish Teaching
 Vicky L. Miller
Industrial Psychology/ Business Admin.

Roger J. Miltenberger
Accounting
 Carol L. Mitchell
Business Administration
 Mark G. Mohl
Business Admin./ Recreation Mgmt.
 Mary Kay Monson
Music Education

Kelly Anne Moore
Criminal Justice
 Martin William Morris
Physical Education Teaching
 Pat Shawn Murphy
Agribusiness
 Suzanne Marie Murphy
Accounting

Bryant Andrew Mutchler
Recreation Management
 Jeffery LaKeith Myrick
Recreation Mgmt./ Physical Ed. Teaching
 Diane Marie Niewohner
Graphic Arts
 Richard James Niles
Criminal Justice/ Sociology

Ralph Whittier Oxley
Agribusiness
 Elaine Ruth Palmberg
Mathematics Teaching
 Stephenie Lynn Palmer
Theatre
 Janice L. Paradise
Criminal Justice

Linda Marie Petersen
Early Childhood Ed./ Elementary Education
 Alison Ann Phelps
General Psychology
 Elizabeth Margaret Pigott
Graphic Arts
 Thomas Allen Poeckes
Computer Science

Michael Scott Powell
Business Administration
 Paula Lois Puckett
Music Education
 Dave Frederick Reed
Business Administration
 Karla Kay Rickett
Music Education



Student Advocate, Julie Lien, is hard at work in the Student Government office.

Seung-Suk Ro

Linda S. Robinson

Psychology/ Art Teaching

Constance B. Root

Accounting/ Economics

Gary L. Rubel

Chemistry/ Physics

Kimberly A. Ruby

Religious Studies

Julie M. Schlosser

Biology/ Chemistry

Todd A. Schnider

Mass Communication/ Art

Brenda L. Schultz

Accounting/ Economics

Lynelle Kathryn Schvien

Physical Ed. Teaching/ Elementary Education

Wade O. Sembach

History Teaching

Matt R. Shaeffer

Business Admin./ Economics

Gary Lewis Shupe

Music Education

Jennifer A. Smith

Elementary Education

Cindy Lea Solberg

Accounting/ Mathematics

Rob Dean Sorum

Accounting/ Economics

Cynthia Sue Stevens

Computer Science/ Graphic Arts

Senior, Todd Armstrong, demonstrates how to use the micros in Jacobsen's Micro Lab.



Max A. Stevens
Chemistry/ Biology
Jimmie Joe Stokes
Business Admin./ Economics
Tami Jo Streiffeler
Elementary Education
Andrew Wonacott Sudman
Computer Science/ Business Admin.

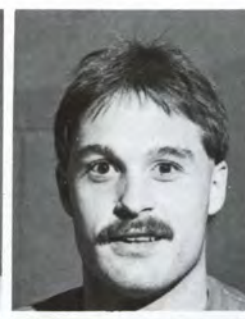


Christal Ann Swift
Lori Kay Thatcher
Art Teaching
Mark Douglas Timmerman
Business Admin./ Economics
Sharon Kay Torneten
Art



Michael Todd Tramp
Accounting/ Agribusiness
Ann Lynn Trimble
Mass Communication
Shu-Ching Tsai
Business Administration
Sara J. Ulven
Biology/ Nursing





Dianna Kaye Van Ness

Music Education

Richard John Vanderloo

Phys. Ed. Teaching/ Recreation Mgmt.

Todd Robert Verschoor

Physical Education Teaching

Thomas Clair Verzani

Agribusiness/ Economics



Mary Patricia Viz

Mass Communication

Morgan Earl Walker

Business Administration

Jaunita Smith Walks Nice

Kevin James Wauhob

Business Ed./ Phys. Ed. Teaching



Florence Anne Weeber

Religious Studies/ Medical Technology

Li-hua Wei

Accounting

Leah Nadine Wesselink

Nursing

Kimberly Kay Wesseln

Elementary Education



Alicia Florine Wessendorf,

Mass Comm./ Music

Brenda Lee Wetherell,

Business Ed. and Admin.

Amy Ruth Wilhelm

David C. Willett,

Business Admin.

Bottom Left:

Paul E. Wilson, *Phys. Ed. Teaching*

Amy L. Zimmerman, *Business Admin.*



SENIORS NOT PICTURED

Charlotte M. Adams, Linda L. Appleby, Steven S. Boston, Patrick C. Breyfogle, Constance J. Christensen, Carolyn K. Erichsen, Patrick J. Floyd, Deborah K. Freed, Keri J. Grasma, John D. Harty, Seong Yong Hong, Alfred L. Johnson, Kraig D. Johnson, Alice R.

Knaack, Anne M. Koopman, Clark P. LaBelle, Erik C. Larsen, Kathy Manning, Gwen S. McLaughlin, Jane A. Nylen, Charles J. Raymond, Eric D. Siert, Linda S. Steffe, Theresa M. Stewart, Michael D. Thornsberry, Gardine P. Wilson, Yi-Jun Clione Young.

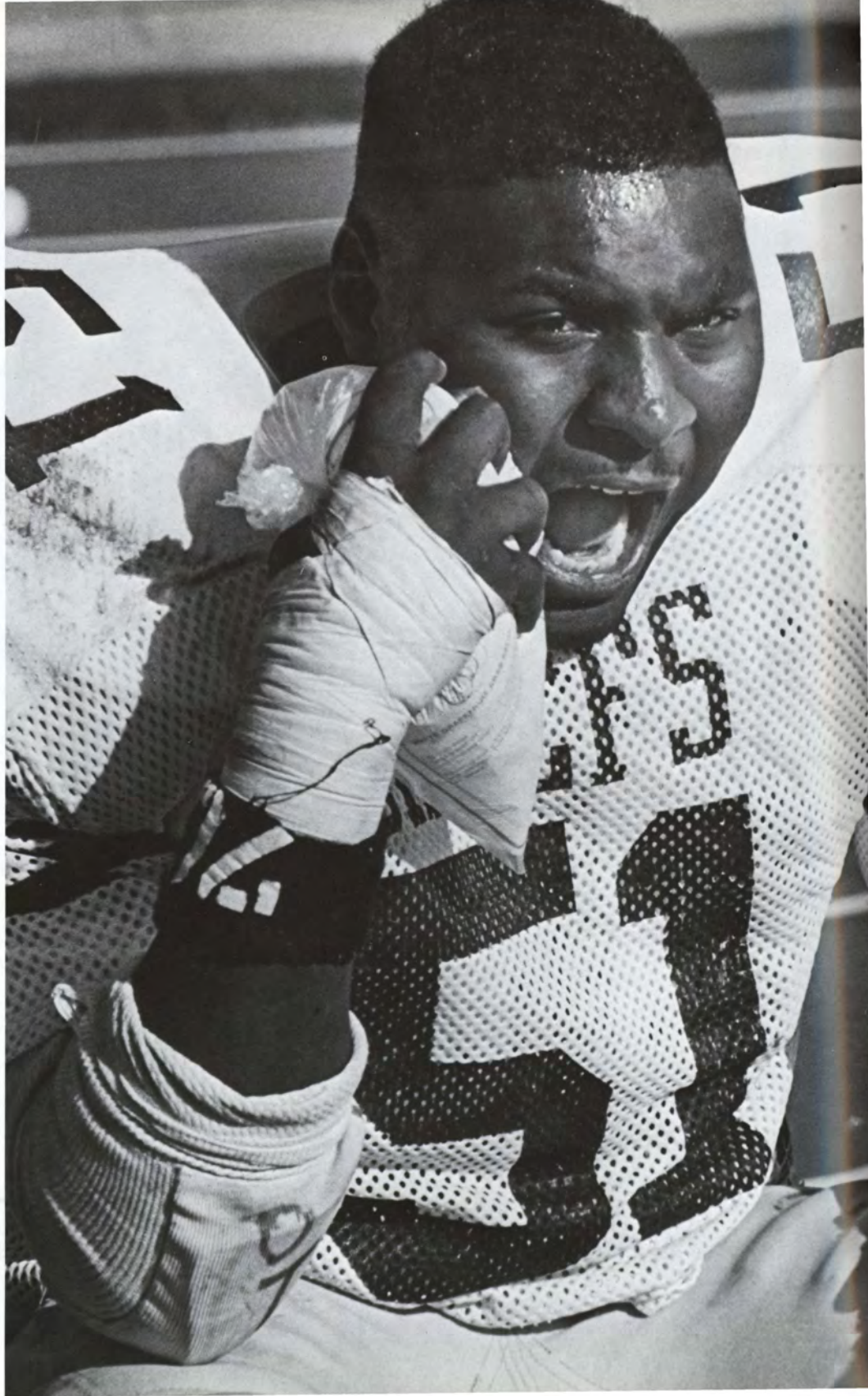




THE GAME PLAN



Above: Monte Riebhoff get ready to pass. Right: Football is tough, especially for Tony Greer as he gets a rest between plays.





Better Year For Morningside's Chiefs

Statistics for the 1987 football year are in the Sports Scoreboard, found on pages 126-127. Head Coach for the year was Erv Mondt, and was assisted by Jim Leavitt, Mark Brosamle, Mike Eggleston, and Ron Zahourek. The team included: Joe Albrecht, Chad Benson, Mark Bleil, Brad Borchers, Gary Boswell, Jeff Bowden, Johnnie Brown, Matt Carney, Tim Christensen, Mark Cooper, Sean Crane, Brian Daugherty, Joe Edwards, Gary Frey, Dale Gaswint, Bob Grantham, Jeff Greene, Anthony Greer, Stacy Hand, Mark Harris, Tim Jackson, Anthon Jelinek, Matt Jurgens, Kevin Kay, Brian Keeney, William

Kennedy, Tom Kenny, Paul Kropf, Gary Krumland, Charelie Lara, Mike Mc Cune, Bryan Mc Cabe, Tim Mc Cabe, Buddy Mc Naughton, Dan Murch, Jeff Myrick, Steve Neubert, Rick Niles, Ralph Oxley, Tymme Patterson, Jeff Phillips, Kirk Ridout, Monte Riebhoff, Mark Scholl, Chad Smeins, Shawn Smeins, Jeff Smith, Todd Smith, Todd Speight, Kirt Spidel, Jerry Stabile, Darrell Thomas, Jim Vanderloo, John Vanderloo, Rick Vanderloo, Troy Vander Stouwe, Mark Vondrak, Derek Wachter, Rick Watson, Matt Westphalen, Steve Wiederhold.

107



Baseball Outlook Is Optomistic

The Chiefs Baseball team sought to improve on their third place finish in the North Central Conference last year. The outlook was good as the Chiefs had eight seniors back for their final year. Practice began February 1, with the actual games beginning the week of Spring Break in Missouri.

Pictured below: The 1988 Baseball Team: Front Row (left to right): Rod Larson, Dan Koolstra, Jason Koetters, Eric Anderson, Randy Walton. Row 2:

James Henrich, Dale Roeman, Kirt Bennett, Dave Franko, Scott Larson, Mike McCune. Row 3: Robert Protexter, Darren Lee, Scott Marr, Kurt Denker, Steve Wiederhold. Back Row: Todd Koos, Steve Neubert, Tony Jackson, Tim Jackson, Gregg Johnson, Tom Sitzmann, Robert Desotel, Rick Smith, Kevin Wauhob. Not Pictured: Todd Speight, Jim Scholten, Head Coach, Fred Stolen, Assistant Coach.



108





Chiefs Return Veteran Club

The Morningside College Ldy Chiefs opened the 1988 softball season by participating in the 13-team Missouri Southern Tournament March 25-26 in Joplin.

Coach Sandy Winter returns 10 letterwinners from last season's 11-16 club, one that finished in a tie for second in the Io-Kota Conference with a 6-4 mark.

Heading the list of returnees is NAIA all district selections Cheri Cantrall, a senior outfielder, and Beth Gawley, a junior pitcher. Cantrall, or West Bend, Ia., pace the Lady Chiefs in hitting (.323) with two doubles, four triples and four home runs. Gawley posted a 5-5 record with 45 strikeouts in 74 innings of work and a 1.98 earned run average.

Other veterans returning include senior infielder Kristi Jones of Sioux City North; senior catcher Dawn Weinreich of Kingsley; junior infielder Suzie Gal-

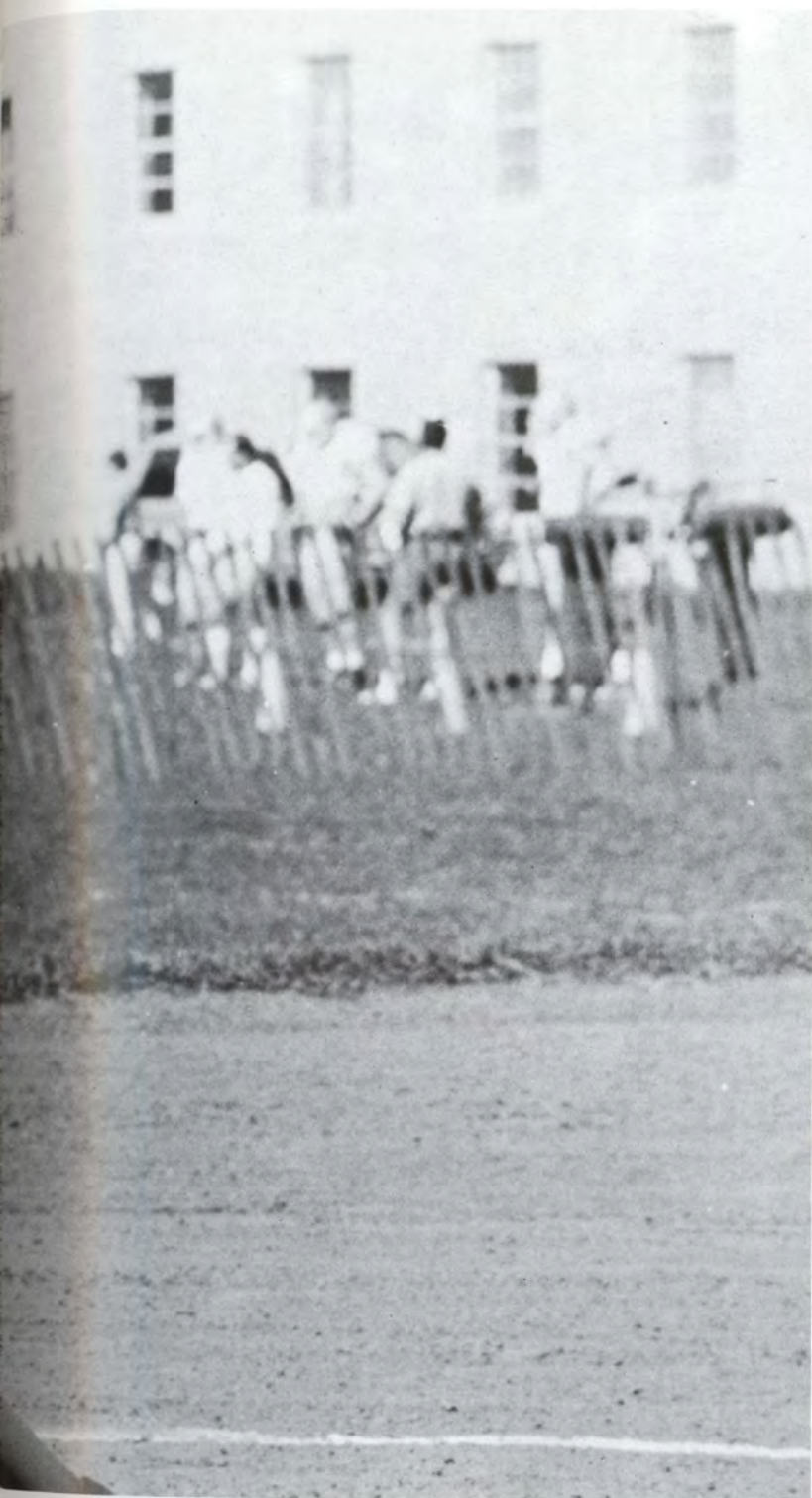
les of Mapleton; junior pitcher Kim Ashby of Sioux City East; sophomore infielder Kelley Ashby of Sioux City East; sophomore outfielder Joanne Gawley of Irwin; sophomore pitcher Vicki Marshall of Denison and sophomore outfielder Shelli Livengood of Sioux City East.

Newcomers also included a trio of Sioux City East products — outfielder Stacy Alfredson, catcher Kelly Reeves and infielder Shelly Walker. Also joining the squad are infielder Rochelle Gerkin of George, pitcher Jodi Sohn of Primghar and infielder Lisa Band of Denison.

The Lady Chief schedule included five tournaments — Missouri Southern, Central College, College of St. Mary, Augustana and Northwestern as well as five Io'Kota Conference matchups and several non-conference encounters.







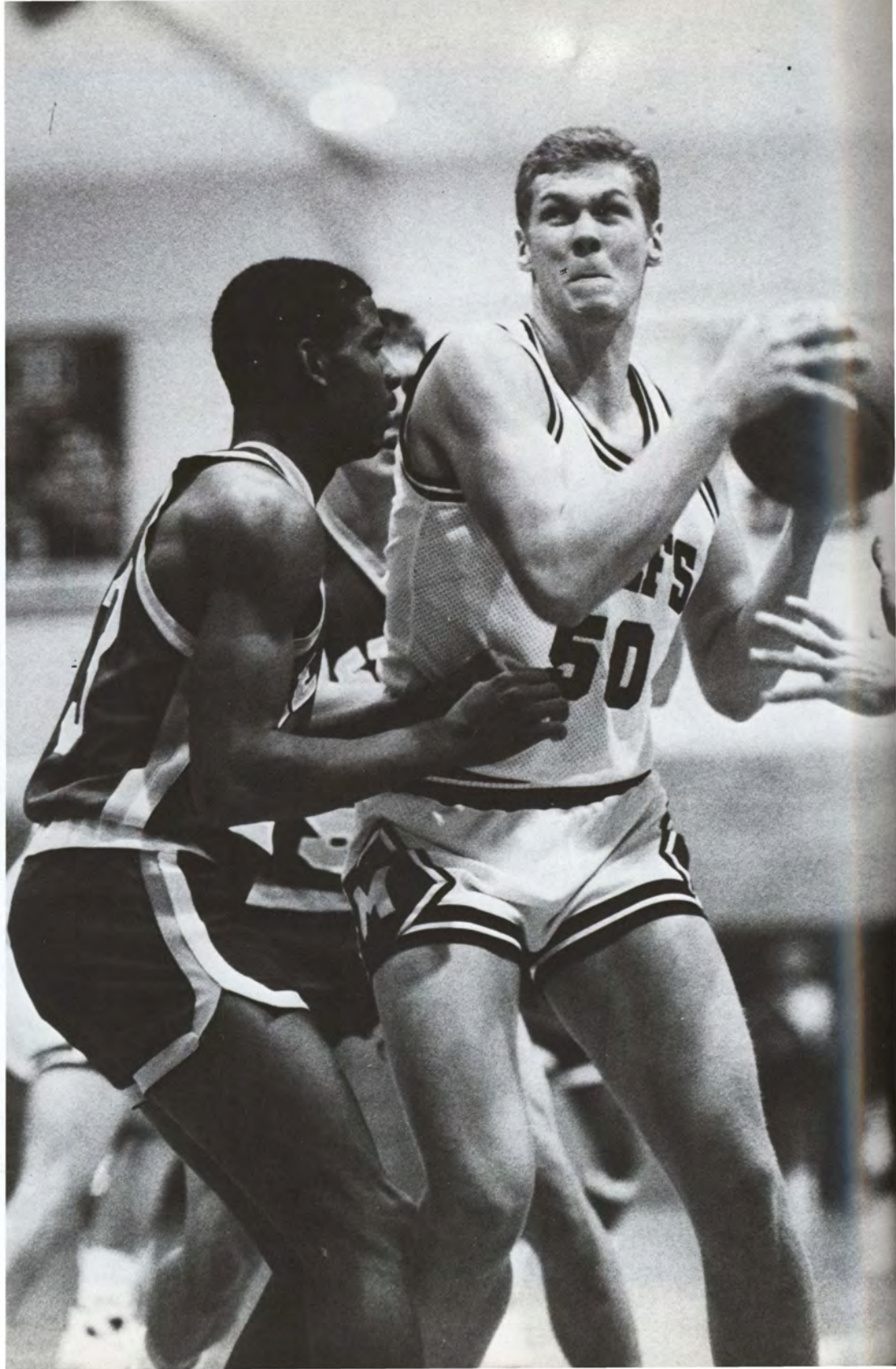
Lady's Softball Roster

The 1988 softball team included: Stacy Alfredson, Kelley Ashby, Kim Ashby, Lisa Bandy, Cheryl Cantrall, Suzanne Galles, Beth Gawley, Joanne Gawley, Rochelle Gerken, Kristi Jones, Sheli

Livengood, Vicki Marshall, Kelly Reeves, Jodi Sohm, Rachelle Walker, Dawn Weinreich. Sandy Winter, Head Coach. Val Uken, Assistant Coach.



Below: Mark Mohl jumps high to earn two points for Morningside. Right: Determination show in his face, as Jeff Birchard keeps his eye on the basket.



Good Team For Men's Basketball

Statistics for the 1987-88 Men's Basketball year are in the Sports Scoreboard, found on pages 126-127. Head Coach for the year was Tom McCracken, and his assistant coaches were

Jim Scholten and Kirt McCracken.

The team, pictured below, are: (Left to Right): Seated John Rossiter, Chris Cassaday, Thomas Betz, Jeff Birchard, Dave Faldmo, Brad

Barkema, Daniel Hill. Back Row: Kirt Mc Cracken, Jim Scholten, Matt Shaeffer, Kirk Ridout, Mark Mohl, Kent Godbersen, Chris Kuhlman, Tom Mc Cracken.



Chris Kuhlman takes a successful shot at the basket. Pictures by Mark Gambiana.

Lady Chiefs BB

Pictured Right (left to right) Morningside College Lady's Basketball team: Seated: Shelly Ashley, Angie Bobolz, Paula Hunter, Carolynn Lamaak, Gina Schuldt, Vicki Rahbusch. Back Row: Kelley Ashby, Kim Ashby, Tracie Mohr, Cristin Cantrall, Kristi Jones, Jodi Sohn, Tonia Arehart, Zuraini Mat Zain, and Sandy Winter, Head Coach .



Lady Chief Travels With AIA

114 Tonia Arehart, a Morningside College junior from Lincoln, Ne, spent a month and a half in Ecuador this summer sharing the gospel. She and 1987 Morningside graduate Janice Schmitz toured the South American country with Athletes In Action.

Eleven lady basketball players from division I and II schools across the United States left for Ecuador, South America on June 15. They along with their coach from Texas Tech, played exhibition games and gave clinics all over Ecuador. The game was played by international rules, which made it more rough and physical than the brand of ball the Lady Chiefs are used to.

More important than basketball was their work as missionaries. "We weren't Americans going over to save a poverty-stricken country. We were Christians going over to share the

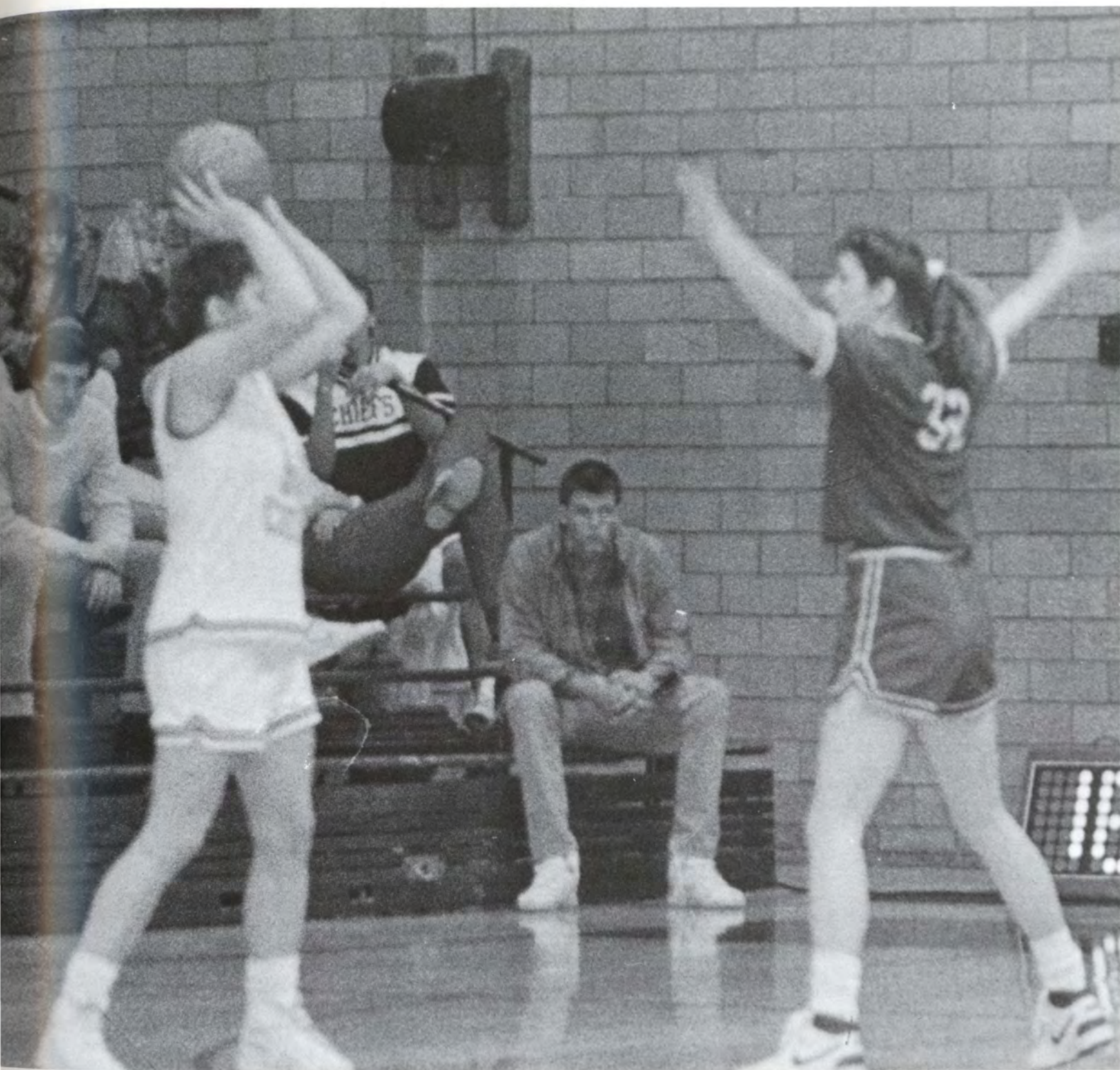
gospel," stated Arehart.

AIA is a Christian sports ministry. The highlight of their game was the half time presentation when they witnessed their personal faith to those attending. "I would stress to any Christian to do missionary work. Its the most fulfilling thing I've ever done since I've become a Christian!" Tonia enthused.

She was the only player on the team who spoke no Spanish. She said this caused her some embarrassing moments but taught her how to express love without messing it up with words. She feels people take language for granted. Tonia calls the Ecuador trip the best experience of her life.

Article by C.R. staff reporter Ann Trimble.







Lady Chiefs Defeat Dordt

The Chief's volleyball team was back on the winning way on October 22. They hosted the Dordt volleyball team to seek revenge after losing earlier in the season by a score of 3-0. The match lasted for four very exciting games with the Chiefs winning three games to one. The games's scores were 15-12, 15-13, 2-15, and 15-9.

The 1987 Volleyball team for Morningside College included: Andrea Anfinson, Tonia Arehart, Kimberley Ashby, Shelly Ashley, Angie Bobolz, Cristin Cantrall, Paula Hunter, Kristi Jones, Carolyn Lamaak, Zuraini Mat Zain, Tracie Mohr, Vicki Rahbusch, Gina Schuldt, Jodi Sohn. Sandy Winter, Head Coach . Kelley Ashby, Stu-

dent Assistant . Kim Spade, Manager .

Article by C.R. staff reporter, Rochelle Gerken.

Below: Vicki Rahbusch fights to keep the Chiefs ahead. On Opposite Page: The Lady Chiefs get together to plan their strategy.



1988 Men's Track Roster

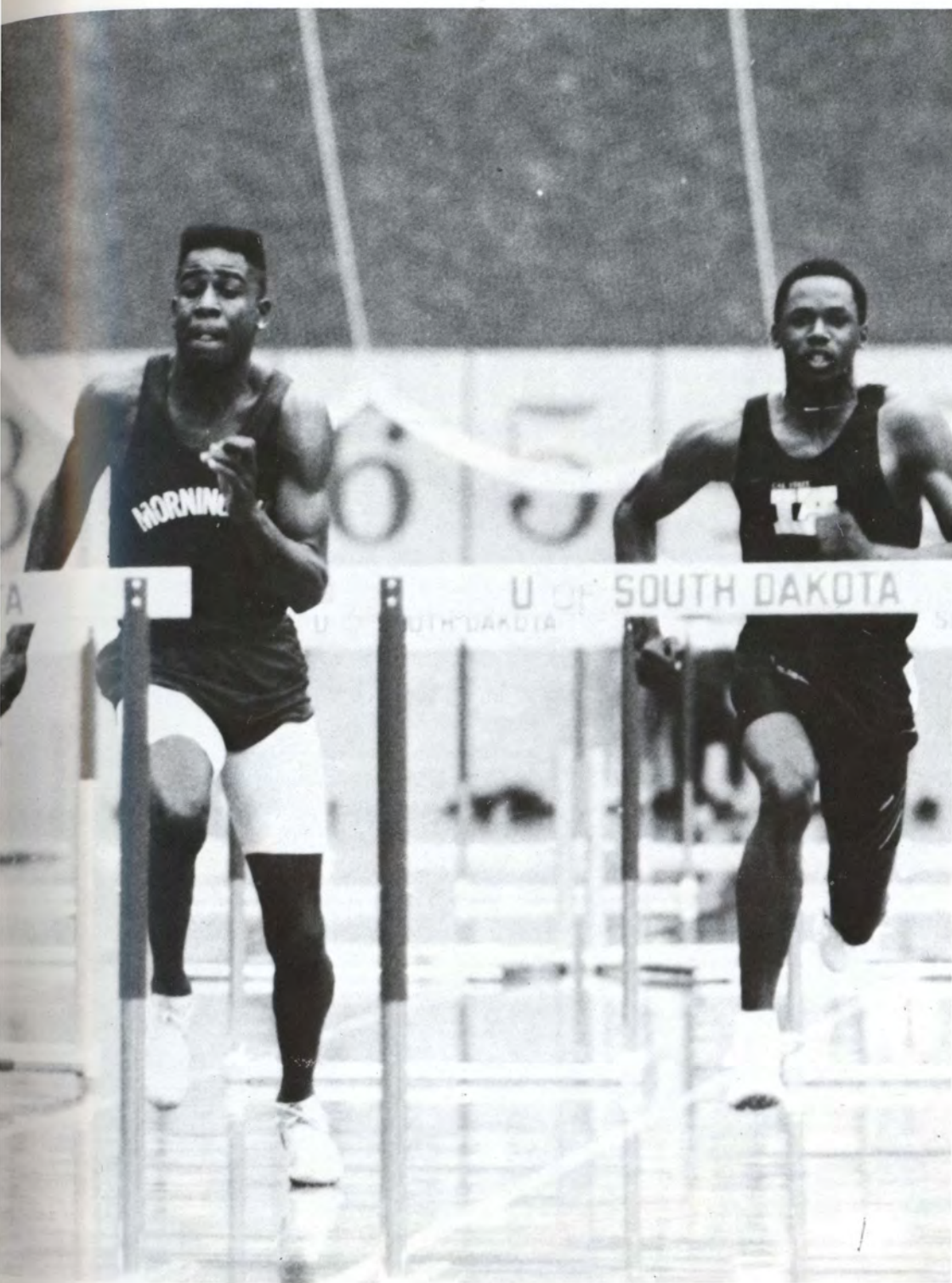
The 1988 Men's track included: Richard Amos, Johnnie Brown, Alan Burns, Matt Carney, Mark Cooper, Randy Eckmann, Joseph Edwards, James Feddersen, Time Ferguson, Kevin Freeman, Greg Gallup, Jeff Grene, Anthony Greer, Stacy Hand, Anton Jelinek, Charles Johnson, Nya Kadenge, Brian Keeney, Lonnie Macpeek, David Nash, Steve Neubert, Mark Scholl, Jeff Smith, Todd Smith, Todd Speight, Darrell Thomas, Morgan Walker, Rick Watson, John Weiland, Rob Wise. Jim Leavitt, *Head Coach*.

Nick Votek and Mike Kasch, *Assistant Coaches*.

Something new this year was a new Women's Track team. Pictures were unavailable, team is as follows: Tonia Arehart, Shelly Ashley, Shelley Fuller, Nyla Hoffman, Paula Hunter, Katharina Moser, Marchelle Roberts, Gina Schuldt, Melanie Thomae, Kelli Thomas, Brenda Wetherell. Jim Leavitt, *Head Coach*.

Pictured below: Gary Boswell and Todd Smith take a break between races.





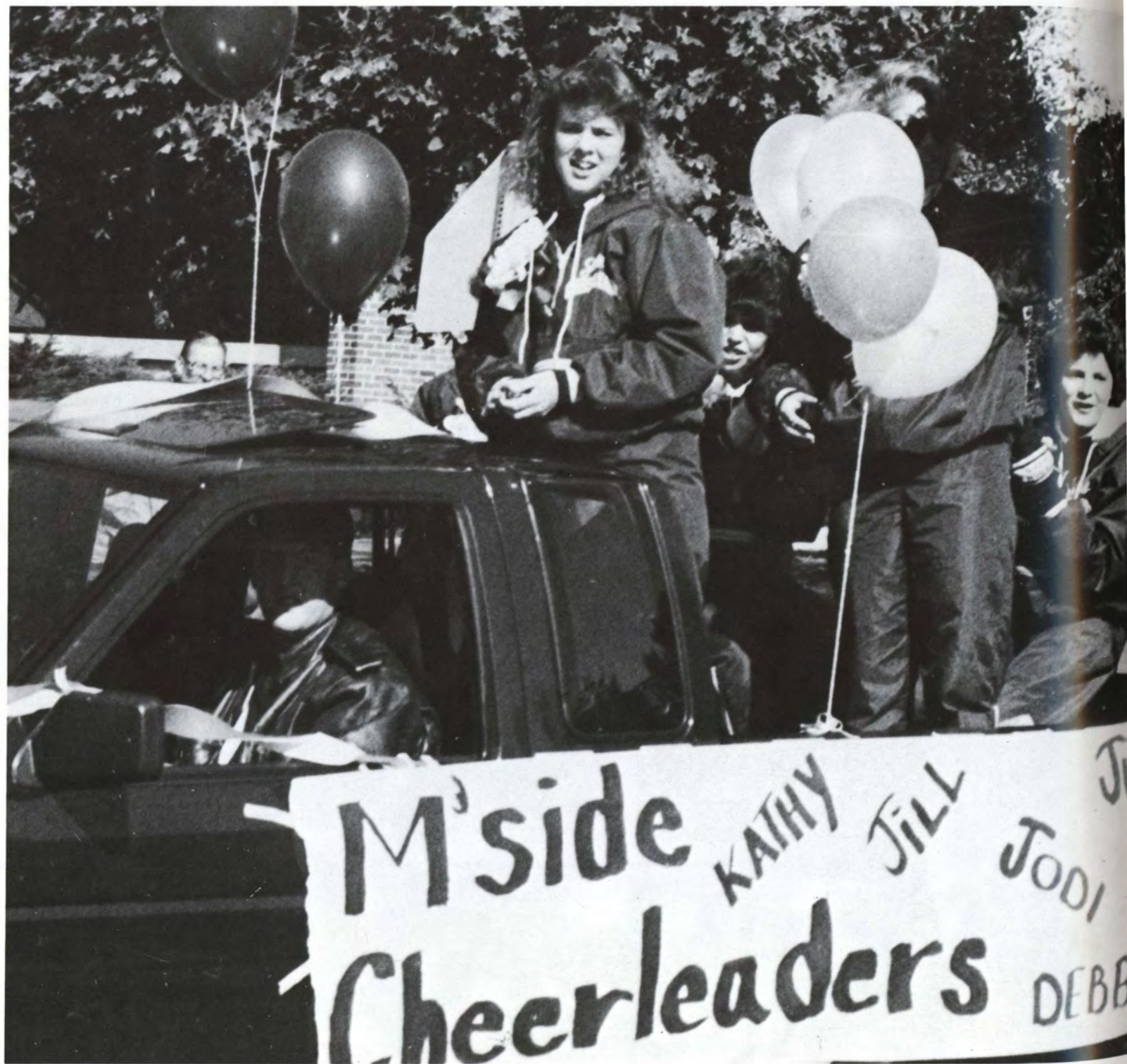
TRACK and FIELD





121

Morningside College Track Team earns some awards at the Annual NCAA Tournament.





Cheerleaders

Morningside College has several different types of Cheerleaders. Among them are the Basketball, Football, Drill team, and Footnotes. Pictured above and right are the Football Cheerleaders, Above left to right: Deb Spiegel, Jennifer Smith, Jodi Dorn, Julie Serck, Kathy Bel-linger, and Eileen Malone. On the opposite page: All the different types of Cheerleaders got together to put a float in the Homecoming parade.

123



GOLF

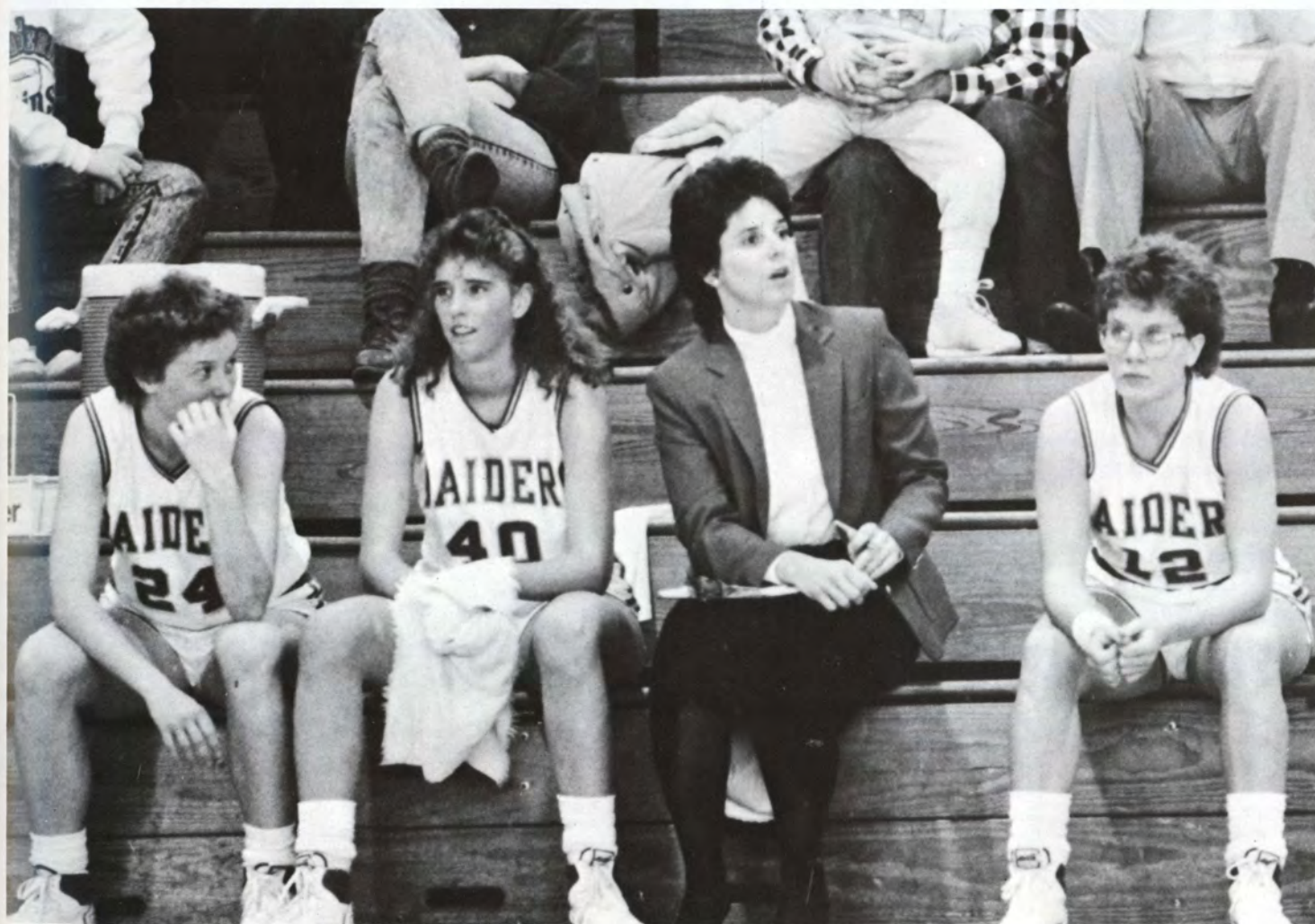
The 1987 Men and Womens Golf Roster included: Tom Mc Cracken, Head Coach . Men's team: John Christensen, Robert Dowd, Kent Godbersen, Shad Kroeger, Tom Powers, Matt

Shaeffer, Rob Sorum, Mike Nieuwsma. Women's team: Carlynn Baerenwald, Julie Evilsizer, Rhonda Evilsizer, Carol Jalas, Michelle Johnson, Lisa Bandy.



SPORTS SCOREBOARD

And Other Interesting Sports Information





Mens

OWN	OPPONENT
67	Briar Cliff College
120	Westmar College
74	Briar Cliff College
83	NW Missouri State
74	NW Missouri State
105	Huron
79	North Dakota
75	Northern Colorado
74	Augustana
73	St. Cloud State
90	Northern Colorado
74	Northern Iowa
63	North Dakota
79	North Dakota State
87	South Dakota
82	Nebraska-Omaha
60	Augustana
68	South Dakota State
77	Mankato State
70	Northern Colorado
59	North Dakota
68	North Dakota State
89	South Dakota
74	Nebraska-Omaha
78	Augustana
54	South Dakota State
65	St. Cloud State
94	Mankato State

Basketball

OPP.	OWN
76	68
88	93
79	68
84	75
73	63
98	100
76	53
68	61
88	64
91	71
73	66
90	67
70	86
70	57
84	61
88	73
73	48
74	66
89	83
73	63
57	81
77	77
74	70
72	73
84	59
67	57
68	58
98	77
	77
	88
	74

Womens

OPPONENT	OPP.
@Wayne State	71
Nebraska Wesleyan	56
@Nebraska-Omaha	70
Doane	62
@Mankato State	68
Grandview	75
Minn.-Deluth	58
##East Montana	56
@St. Cloud State	75
@Colorado College	63
@Air Force	74
**Dordt	58
@**Northwestern	69
**Briar Cliff	47
@South Dakota	78
@**Westmar	49
Augustana	76
South Dakota State	70
@**Briar Cliff	79
@Grandview	40
**Westmar	32
**Northwestern	43
@South Dakota State	76
@**Mount Marty	800T
@**Dordt	56
South Dakota	54
**Mount Marty	63
@Augustana	79
Dordt	44
Briar Cliff	79
@St. Ambrose	86



Track Schedule

INDOOR SCHEDULE

..... Jan. 30	Bertanillo Open.....	Vermillion, SD
Feb. 6	Raider Invitational	Orange City, IA
Feb. 12	UNI Invitational	Cedar Falls, IA
Feb. 18	USD Quadrangular	Vermillion, SD
Feb. 26	North Central Indoor Meet....	Vermillion, SD
Feb. 27	North Central Indoor Meet....	Vermillion, SD

OUTDOOR SCHEDULE

Apr. 2	Pepsi Invitational	Manhattan, KS
Apr. 9	Park Relays	Kansas City, MO
Apr. 23	Sioux City Relays	Sioux City, IA
Apr. 29	Drake Relays.....	Des Moines, IA
Apr. 30	Drake Relays.....	Des Moines, IA
May 7	Iowa State Invitational	Ames, IA
May 14	NCC Outdoor Conference ...	Grand Forks, ND
May 15	NCC Outdoor Conference ...	Grand Forks, ND
May 21	Last Chance Meet	Lincoln, NE
May 24	NCAA Division II Nationals	Virginia
May 28	NCAA Division II Nationals	Virginia

Football Schedule

Sept. 5	vs. Northwestern
Sept. 19	vs. U. of Northern Colorado
Sept. 26	vs. U. of North Dakota(Shrine Game)
Oct. 3	vs. U. of South Dakota(Homecoming)
Oct. 17	South Dakota State U.
Oct. 24	Augustana College
Oct. 31	Mankato State U.
Nov. 7	St. Cloud State U.
Nov. 14	U. of Nebraska, Omaha
Nov. 21	Central Florida U.

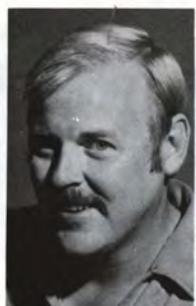
..... The Sioux apologizes for the scores that were not included in the scoreboard.



isn



David John Adams
Shelly J. Albers
Tonia Sue Arehart
Kimberly Kay Ashby
Shelly J. Ashley
Carlynn K. Baerenwald



Maria E. Balomenos
Brad Matthew Barkema
Danny R. Berg
Patricia Ann Besch
Mark T. Bleil
Kevin John Bliss



Anita Fae Blue
Keith Alan Bohle
Bradley A. Borchers
Dawn L. Borchers
Brenda K. Braunger
Kipp David Brockman



Todd A. Brown
William Russell Brown
Joan K. Burke
Daniel Steven Camarigg
Paul William Carlson
Matt Scott Carney



Sue Ann Case
Chris Allen Cassaday
Rodney Chamberlain
Stacy Lee Childs
Tim Joseph Christensen
Rhonda Renay Cleveringa





Peggy A. Cole
Mona Lynne Collins
Scott Keith Comer
Susan Rae Conner
Ernest Cery Conry
Janet Sue Countryman



Ben Ray Cox
John Christian Crosgrave
Lanette Christine Curry
Bryan Lee Davis
Debra J. Denney
Timothy John Doohen



Jodi Sue Dorn
Virginia Gail Dunn
Joseph Scott Edwards
Kathleen Irene Eyer
Teresa Jean Ferdig
Steven Lynn Freese



Pamela Marie Frey
Robert Richard Gant
Beth Ann Gawley
Roxanne Lynn Geerdes
Amy J. Gerking
Shawn Allan Gosch



Michael Dean Groote
Erica Lynn Gunderson
Ik Joon Han
Kitty Jo Mary Harnack
Laurie A. Harpenau
Marilyn Rose Harrington

William Scott Hartwig
Robert H. Heien
Kimberly Kay Heim
Jo Dee Jane Hempey
Sherry Ranae Hilbrands
Melissa Raquel Hill



Pam Holstad
Paula Jean Hunter
Jeffrey Scott Irvin
Kelly Gene Jacobsma
Jackie Anna Jacobson
Carol Ann Jalas



Lonnie James
William John Jeffords
Michelle Marie Johnson
Everett E. Jones
James Howard Julius
Thomas Joseph Kenny



Barbara Jean King
Wilfred H. Kitto
Dorothy M. Knee
Cherie Sue Kness
Robin L. Korthals
Paul Edward Kropf



Daniel Henry Kruger
Robert W. Kull
Ron M. Larson
Jong Wook Lee
Won Suk Lee
Michael Elaine Levich





Kathleen Marie Limerick
Daniel Joseph Linden
Stan Jay Lupkes
Douglas Scott Martin
Penny Jo May
Nancy Ellen McCoy



Sherri Lee McGinnis
Brenda Lee McGuire
Carol Kean Melby
Kaye Lynn Menning
Phillip Andrew Miller
Tracie Marie Mohr



Staci Lynn Montagne
Audrey Aileen Moreau
Doreen Morris
Linda D. Munoz
Loretta Ann Myers
Karen Williams Nacke



Julie Ranae Negus
Ren L. Netz
Steve P. Neubert
Judi Doris Pauling
Cheryl Ann Peck
Amy Louise Peterson



Sheila Marie Peterson
Todd James Peterson
Carolyn Jo Phillips
Dianna Lynne Phillips
Jeff A. Phillips
Lanette Lorelle Pollock

Greg A. Prather
Daniel Pretends Eagle
Karla Jean Rasmussen
Jayne Ann Reindal
Pamela Kay Reis
Robert Rich Jr.



Judi K. Richards
Monte J. Riebhoff
Christopher John Riedesel
Dale Francis Roemen
Debra Sue Rothe
Jason Paul Rothman



Laura Denise Marie Scammacca
Susan Schiefelbein
Gina Louise Schuldt
Michelle A. Schuler
Julie Ann Serck
Richard Joseph Smith



Todd Anthony Smith
Colleen Sperry
Deborah Kay Spiegel
Jerome D. Stabile
Susan K. Steffen
Chris T. Steinbach



Shannon Eugene Stewart
Rochelle Ann Stock
Susan Leigh Stock
Julie Kay Swalve
Kelli Renae Thomas
John Paul Torno



Juniors Not Pictured

Jason J. Dannenberg, Catharine M. Goodwin, Parris M. Green, Anne E. Herrmann, Akramossadat Hosseini, Mary E. Johnson, Ida M. Milligan, Diane K. Patton, Matthew L. Pointer, Susan L. Schirm, Gerald W. Schroeder, Pauline K. Sensenig, Darrell L. Thomas, Cynthia A. Wright.

George Lee Trudell
Chuang-Wen Anna Tung
Amy Lou Twillman

Paula Faye Vellema
Michelle Lynne Venteicher

Bill Hartwig, Julie Lien, and Bill Brown relax in the Commons newly remodeled lobby.

Nicholas J. Votek
Paulette Kay Wahl

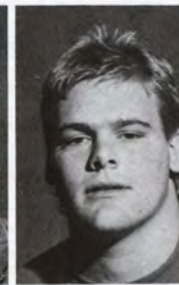
Theodric Alan Watson
Lorraine A. Watts
John Kenneth Weiland
Dawnetta Marie Weinreich
Wade W. Welding
Robert P. Werkmeister

Tracy A. Wingert
Michelle Carolyn Winkler
Kimberly Ann Wollesen
Daniel Duane Young
Jennifer M. Young
Lyle Lester Youngdahl

Kathryn Faye Aardema
 Richard Grant Amos
 David Paul Archer
 Kelley Chere Ashby
 Shellie Lynn Athey
 Gary Lynn Baker



Bethen Anne Ballantyne
 Joseph William Bates
 Christopher L. Belt
 Joseph Merlyn Bendix
 Chad W. Benson
 Lisa Kaye Bergholt



Cameron Lee Berteloth
 Tom J. Betz
 Brent Scott Bielski
 Diane E. Bikakis
 Suzanne Marie Black
 Jeffrey Edward Boland

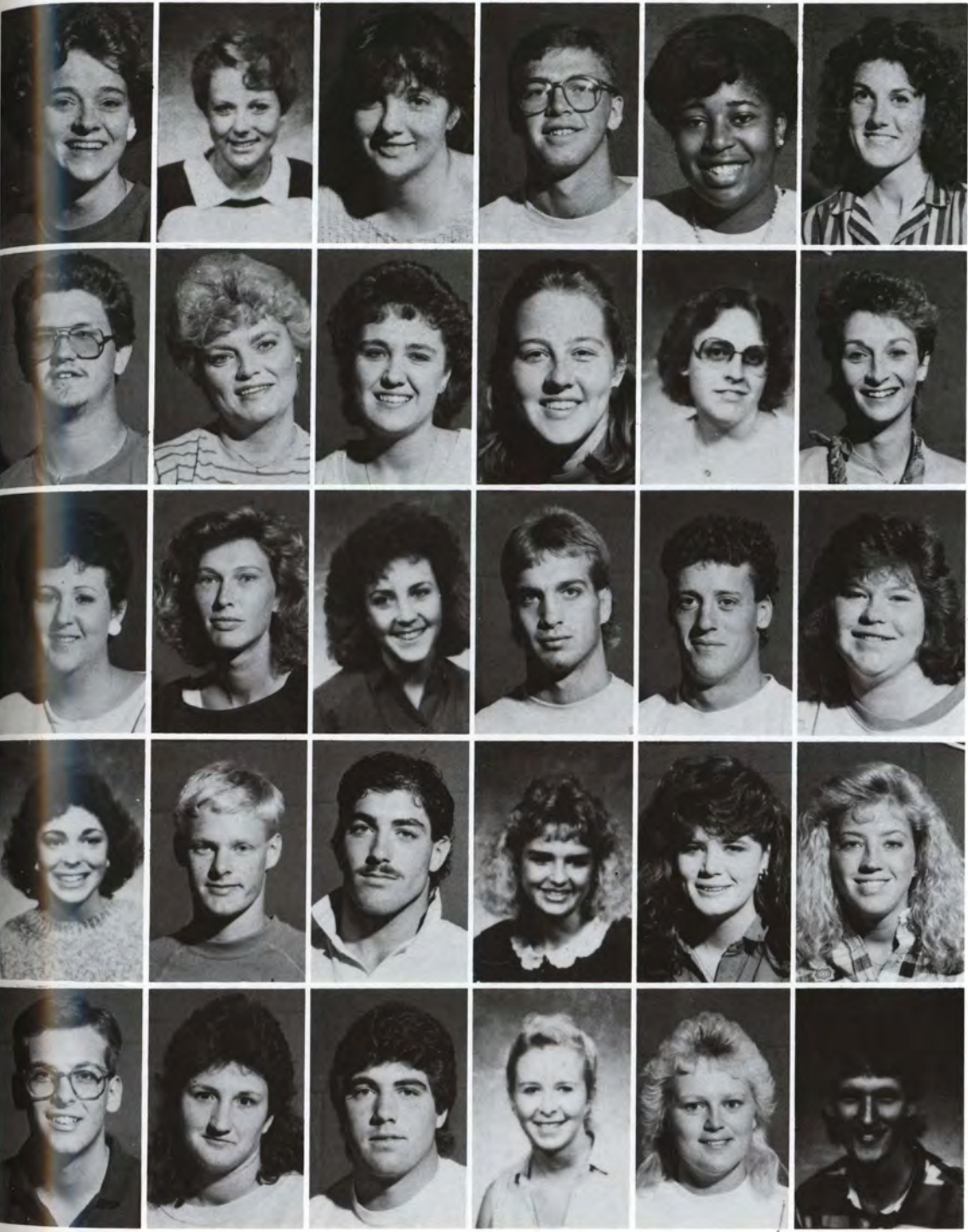


Julie L. Boles
 Mark D. Bonnstetter
 Bradley Jon Borchers
 Patti Ann Borrall
 Jeff A. Brower
 Russell Blaine Brownlee



Crystal Ann Bunge
 Stanley M. Cain
 Souchin Cam
 Cristin Kay Cantrall
 Lisa Renee Claussen
 John William Collison





Marianne Elizabeth Conolly
Amy Lynn Cunningham
Melissa Dean
Curtis Jay Denker
Angela Dennis
Joan Marie Deprenger

Todd K. Determann
Joan Diane Dodds
Stacey Ann Doeden
Jeanne Marie Donahoo
Barbara Ann Downs
Rebecca Lynn Erbert

Julie Mae Etter
Lindel Ruth Everist
Lori Ann Fairchild
James E. Feddersen
James Gary Fitzloff
Amy J. Foster

Shelley Marie Fuller
Perrie Dean Garland
Dale D. Gaswint
Joanne M. Gawley
Marla Marie Geary
Deborah A. Goeden

Bryan Richard Goodman
Brenda Rena Gran
Robert Lee Grantham
Colleen Marie Green
Jeanne Marie Groves
Scott Charles Gustafson

Calvin Dean Haack
 Pamela Hansen
 Mark Alan Harris
 Andy Jay Hefner
 Sara Christine Henrich
 James Patrick Hettinger



Sabrina Jane Hey
 Stacy Elaine Hildreth
 James William Hiserote
 Janis April Hlad
 Karen Lynn Hokenson
 Patricia Ann Holling



Toni Marie Holloway
 Scott A. Holtz
 Mary Anne Hovland
 Marcia Ann Hradec
 Jennifer Lynn Hurley
 Timothy Russell Jackson



Marcia Kay Jessen
 Gregg Howard Johnson
 Kimberly Kristina Johnson
 Michael W. Jones
 LeAnn Colleen Kamm
 Kevin C. Kay



Cynthia Marie Keele
 Brian Dennis Keeney
 Woo Jo Kim
 Joel Eugene Klatt
 Jason Parker Koettters
 Michael Ray Kollbaum





Shadrak Wayne Kroeger
Patrick C. Lappe
Steve Lynn Lauen
Darren Dwayne Lee
Jung Jum Lee
Cassandra Kathleen Legg



Stacy A. Leu
Roberta Loraine Lint
Mary Lisa Little
Sheli Ann Livengood
Russell Dale Lockwood
Lonnie Francis MacPeck



Louis James Manker
Vicki A. Marshall
Bryan Lee McCabe
Kirt Thomas McCracken
Abigail L. McMeekin
Catherine JeaMae McMullen



Jason Mehess
David Lee Meiske
Michelle M. Meurer
Joseph Leo Mlnarik
Patricia Michelle Mohr
Trudy Lee Moody



Neil Dwight Morenz
Katharina P. Moser
David Gordon Nash
Joan Marie Nassiff
Lucinda Lynne Neville
Tammy Ann Newell

Kevin Lee Nieuwsma
Lori Ann Niles
Connie E. O'Hara
Mary Ellen Oftedal
Jennie R. Paulos
Daniel Edward Peters



Tim James Peters
Angela L. Peterson
Derek Layne Peterson
Louise E. Peterson
Andrea Kay Pohlman
Michael Francis Port



Steve E. Porter
Linda Joyce Proctor
Robert Gerald Protexter
Vicki Jo Rahbusch
Christopher C. Rants
Anne Marie Reed



Laura Gene Rehder
Christine Lorraine Rich
Jill Ann Riden
Cory A. Roberts
Marchelle Marie Roberts
John Thomas Rossiter



John H. Russell
Laura Marie Sampson
Rachel M. Santema
Troy Joseph Schlins
Cathy Marie Schloesser
Mary Kathryn Schloesser





Patricia Robin Schmitz
 Gregory John Schneiders
 Sam Shrank
 Fawn Renee Schwartz
 Dennis Eugene Shaver
 Judith Kay Skoglund



Vicki L. Smallldridge
 Chad Smeins
 Roxanne M. Smith
 Albert L. Soatikee
 Kimberly Francoise Spade
 Christine R. Stalzer



James Brian Stanek
 Scott Steinhoff
 Michelle Ann Stevenson
 Constance Stramd
 Jeri Lynn Sturges
 Dong Yoon Suh



Lisa Marie Swoboda
 Marilyn Kay Tague
 Terry Scott Taiber
 Lisa Lynne Taylor
 Michael Edward Thompson
 Steven H. Toft



Dong Thi Tong
 Randy Clyde Uhl
 David Lee Valentine
 Debra Lynn Van Engen
 Elaine R. Vander Broek
 Tamara R. Vander Pol

Edward Walter Welding
Greg A. Wells
Robin Renae Wells
Sherry Lynn Wessling
Matthew Harvey Westphalen
Brett Allan Wheelock



Steve H. Wiederhold
Melissa Lynn Will
Susan E. Woodard

SOPHOMORES NOT PICTURED

Linda K. Alfredson, Julianne L. Andrews, Jonathan C. Barnett, Nadine K. Bartolozzi, Julie A. Bozeman, Allen D. Burns, Nancy A. Bursick, Scott A. Davis, Joel R. Ford, Denise A. Henry, Rita L. Hollander, Nya M. Kadenge, Gloria L. Koll, Seung-Joon Lee, Chris A. Mansfield, Mary M. McBride, Roger E. McGinnis, Arlene J. Milbrodt, Kendall H. Millard, Suzan K. Monkelien, Nancy A. Murray, Miles H. Patton, Diane S. Peterson, Teresa M. Piersma, Edward W. Ploeger, Mary L. Pointer, Perry A. Rasmussen, Rick A. Rector, Rhonda E. Reuter, Kris L. Salmon, Cathy L. Sandage, Dorothy Sonksen, Stacey A. Spotts, Kirk L. Wilson, Larry V. Wood, Peggy S. Zellmer.



Doug Proffitt mans the Black Jack table during CBC's Casino Night, part of Winterfest activities. The new "Buckingham's", formerly the "Wig Wam", as students enjoy the new look.



Noraziah Abdul Aziz
Hamizah Abdul Hamid
Yusrim Abdul Rahman
Ahmad Hamdany Ahmad Halimy
Joseph Dean Albrecht
Stacy Jean Alfredson



Dale Benjamin American Horse
Eric Wade Anderson
Kimberly A. Anderson
Andrea Jane Anfinson
Noor Azman Ariffin
Jeffery George Arnold





Scott Eric Atwood
Darla Christine Bainbridge
Lisa Michelle Bandy
Mary Lou Barker
Sharon Patricia Barngrover
George Robert Batcheller



Richard Allen Baxter
Jeannine Berger
Ronald George Berger
Wade Allan Bietz
Julie Ann Biggerstaff
Frank J. Bilello



Jeff M. Birchard
Tricia Linn Bliven
Angie C. Bobolz
Susan Marie Bock
Paul David Bohlke
Gary Jerome Boswell



Gary Dean Boucher
Lea Anne Boucher
Julie Anne Bouse
Jodi Kay Boyer
Thais A. Bronner
Brenda Jo Broveak



Ryan Dennis Buell
Jana L. Burke
Brenda Renee Bush
Michael Scott Carriveau
Michelle Lynn Carter
Edith Casaday

Jon M. Christenson
 Trisha Lynn Christeson
 Cyle Joseph Claflin
 Mannix L. Clark
 Darin L. Click
 James Glenn Cloudas



Garry M. Comstock
 Denise Rae Conover
 Morri Lee Conway
 Mark Edward Cooper
 Jill Kristine Cork
 Lisa Marie Cosgrove



Candace Darlene Cota
 Christine Lee Cox
 Sean L. Crane
 Teresa A. Crippen
 Ginger Gayle Crispin
 Patricia LaBerta Curry



Anthony Perez Dancer
 Cindy Sue Danker
 Donna Marie Day
 Robert Michael DeSotel
 Curtis L. Decker
 Kelly Christine Desv



Delana Rae Dickerson
 Kristi Lynn Disch
 Christine Heather Donahue
 JoAnn Renee Donner
 Robert Wayne Dowd
 Laurie Denise Drees





LeeAnn Lynn Dula
Henry Aaron Dumas
Jane Marie Eckerman
Randy Kenneth Eckmann
Katherine Elaine Edner
Carita Dawn Ellerbeck



Julie Ann Evilsizer
Kori Janette Ewoldt
David Norman Faldmo
Timothy James Ferguson
Kristin Stephanie Fischer
Sean Francis Flaherty



Diane E. Fleming
Lynn M. Foster
Diane F. Fredrickson
Kevin Wayne Freeman
Gary Lee Frey
Tammi Lee Gagnon



Gregory Gallup
Todd Alan Geer
Michael Alan Gentry
Rochelle Gerken
David Thomas Gerking
Shirley Jane Goetsch



Kevin Dennis Gonnerman
Kenneth Dean Goodwin
Evan George Green
Jeff S. Greene
Antonio B. Greer
Nicki L. Gross

Dawn Michele Grossnickle
 Christopher Allyn Haack
 Kimberly Kathleen Hahne
 Stacy Michael Hand
 Todd Michael Hansel
 Carla Alyce Hansen



Julie Marie Harpenau
 Rebecca Lynn Hartsell
 Maria Kathryn Hay
 Steven Allen Haynes
 Kevin D. Hedemark
 Tami Joann Hedges



John Edward Hennessy
 Kelly R. Henry
 Tammy Marie Hicklin
 Ann Kari Hildring
 Daniel Hill
 Michelle Marie Hinrichsen



Lisa Michele Hobson
 Natasha Penelope Hodge
 Jennifer Hoefert
 Nyla Renee Hoffman
 Joseph Michael Hoffmann
 Timothy Michael Holcomb



Courtenay E. Hollander
 Shane Gregory Hosch
 Laurie Marie Hoss
 Amy Jo Howell
 Deborah Leigh Hudson
 Rolli S. Hultquist





Denise Frances Hunter
Paul Daniel Hunter
Anthony T. Jackson
Geraldine Lynn James
Patricia Jean Janecke
Anton Edward Jelinek



Jessica Ann Jensen
Terrence Lee Jernberg
Tina Marie Joens
Jeffrey E. Johnson
Stacy Rae Johnson
Michael Jorgensen



Monique Shawnae Juarez
Elizabeth A. Junge
Dennis A. Karlin
Donna Marie Keairns
Michelle Cary Keith
Melissa Kay Kenkel



William John Kennedy
Salina Khalid
Willa Frances Kindt
Randy Paul Kittler
Michelle Lynn Klinge
Stephanie D. Kohnen



Dan L. Koolstra
Gary Joseph Krumland
Christopher Morris Kuhlmann
Paul Keith Kynard
William R. Ladd
Charlie William Lara



Melisa Ann Larimore
Linda Jean Larsen
Rodney James Larsen
Ryan G. Larson
Julie A. Latham
Laurie Lynn Law



Bobbi L. Legg
Andrea Jeanne Lindgren
Jon Larry Lindstrom
Kelly Elizabeth Loftus
Jay Lee Lundt
David James Madsen



Scott Michael Marr
Pamela Kay Maschino
Keri Lee Mason
Roxanne Renee Massey
Zuraini Bte Mat Zain
Richard Dean Maxfield



Donald Alexander McCormick
Michael Joseph McCune
Mary Margaret McDermott
Steve B. McElhatten
Robert Joseph McEvoy II
Scott W. McGregor



Rhonda Jean McKee
Angela Lee McKenzie
Kimberlee Jo McManigal
Beverly Jean McNamara
Gene A. McNaughton
Robin Ranae Mead





Sue A. Merchant
 Vernon E. Meyer
 Gerald J. Miller
 Michael M. Miller
 Tricia Marie Mills
 Mohd. Anas Mohd. Alwi



Bayphone Morisath
 Mary Georgianna Mrla
 Daniel G. Murch
 Heather Lee Murkins
 George Joseph Nacke
 John Paul Nagel



Gregory Allen Neff
 Rebecca Lynn Nelson
 Michael Dean Nieuwsma
 Khalay S. Nou
 Patrick P. O'Connell
 John D. Ocker



Steven Sean Olson
 Tymme Terrance Patterson
 Chris L. Pearson
 Robert Bernard Pederson Jr.
 Bradley Wayne Peterson
 Kimberly K. Peterson



Traci Lea Peyton
 Scott Allan Pflanz
 Mark Shannon Pointer
 Thomas Gerard Powers
 Douglas Wayne Proffitt
 Peggy Marie Pudenz

Kelly Lynn Reeves
 Angela Marie Rehal
 Daniel Joseph Rehal
 Ken Joseph Reuter
 Charles Wayne Rich
 Lori Lynn Rider



Kirk Michael Ridout
 Michelle Lyn Routon
 Karen Sue Ruby
 Brian Norman Rupert
 Theresa Ann Ryther
 Teri Marie Saak



Yoko Sakane
 Zane Allen Sanchez
 Joey D. Sandvig
 Jeff Raymond Santi
 Colene Elizabeth Schaaf
 Charles Mark Schmith



Mark Scholl
 Pamela D. Schram
 Connie Jean Schubert
 Shelley Lynelle Semon
 Stephen James Seybert
 Jill Renee Seymour



Brett A. Sims
 Theresa Pauline Sitzmann
 Thomas Joseph Sitzmann
 Maran Lynn Skinner
 Jody Marie Skoglund
 Chad Richard Smeins





Jeffrey A. Smith
Jill J. Smith
Barbara Ann Sneller
Jodi Ellen Sohn
Roger Dean Sopher
Todd Speight



Kurt Allen Spidel
Jennifer Lyn Spiegel
Kelli Sue Stabbe
Linda Lu Steinmetz
Theresa Lyn Stickrod
Debbra K. Stiles



Matthew Elliott Sturdevant
Jeffrey John Taylor
Linda Jean Taylor
Sonya Elaine Terry
Melanie Kaye Thomae
Delaine Jeanette Thompson



Janelle Louise Thompson
Karrie Lea Thompson
Traci Ann Thompson
Connie Lynn Treptow
Louise M. Uhl
Robert L. Valente



Kristin Jane Van Berkum
Glenn Jay Van Horssen
Troy R. Vander Stouwe
James Richard Vanderloo
John Robert Vanderloo
Cindy Kay Vaupel

Jeff Arnold grinning and bearing it
thru Freshmen Orientation
Weekend.

Danella J. Ver Hoef
Kelly Joseph Verschoor
Edward Michael Voloshen
Mark Anthony Vondrak

Derek Matthew Wachter
Rachelle D. Walker
Randall Walton
Kyle Wesley Waltz

Karlene Webb
Cynthia Rae Weisz
Dara Lee Wetzberger
Robert Charles Williams

"Anything Goes Oympics" proves
dangerously muddy in this game of
Tug Of War.

Elizabeth Ann Wolfe
Melissa Ann Wooley

Gwyndolyn Rae Young
Faridah Yusof



FRESHMEN NOT PICTURED

Joan L. Archer, Pamela J. Ashford, Julie A. Bach, Scott W. Bainbridge, Donna R. Beisner, Susan A. Brandt, Johnnie E. Brown, Gayle L. Brunick, Martha M. Burchard, Maria J. Carmona, Brian K. Daugherty, Jason M. Davis, Mikel J. Derby, Stephanie A. Divis, Kathleen S. Erdmann, Deborah A. Erickson, Kristin A. Flammang, Kathleen I. Gaborit, Kevin T. Gray, Barbara Haley, Vicki L. Hansel, Lynn K. Hansen, Debra A. Harding, Tina M. Heer, Lori L. Hesse, Jeffery D.

Horst, Melanie J. Jacobsen, Charles B. Johnson, Linda L. Kellen, Christine M. Kelly, Choong Sub Lee, Norman J. Mackey, Artur Manhica, Brian L. Marshall, Joanne M. McArthur, Theresa L. Miller, Trisha A. Mittelstadt, Cheryl J. Petite, Carol M. Rasmussen, Mark E. Schmidt, Tammy D. Sjurson, Jill A. Slaughter, Lynette L. Smith, Mary E. Speck, Juline S. Thornton, Jeff A. Wendt, Velvet A. White, Thonda K. Woodward.





Left: Rob Sorum wipes out during the Homecoming Parade. Bottom Left: Dealing out cards at the Black Jack table during Casino Nite, Dave Nash checks out his gamblers. Below: Barb King shows her "MC" Spirit!!



96% Job Placement Rate

Over 96 percent of May, 1987 Morningside College graduates looking for employment have secured jobs, according to results of an annual survey conducted by the college's Career Planning and Placement Center. A total of 100 of the 104 graduates seeking employment have now started their careers for a 96.1 percent job placement rate. Eighty-eight of which found jobs in their major field of study.

"Once again, the placement rate for Morningside College

graduates is outstanding," said President Miles Tommeraasen. "Morningside College has consistently placed an impressive percentage of graduates in career fields and that statistic is a reflection of the outstanding academic programs that prepare our students for today's job market," he said.

This survey study was originated ten years ago, and does not include job placement statistics on graduates from the college's summer and winter commencements.



Commuters . . . Students With Drive!

Commuters are an important part of the life at Morningside. They participate in school activities and academic programs just as the on campus students do, and have a lot to offer the college.

February 29 — March 4 was designated "Commuter Week" in honor of the "Students With Drive"! Buttons with cars on them were distributed to commuters and entitled them to specials all week long. At Buckingham's there was free pop on Monday, combo pizza and a drink for \$1.50 on Tuesday, and free ice cream bars on Wednesday. Among the other activities, commuters were eligible to win prizes at the Thursday Basketball game.

The week was a special effort to let commuters know they are appreciated, and welcomed on the Morningside campus.

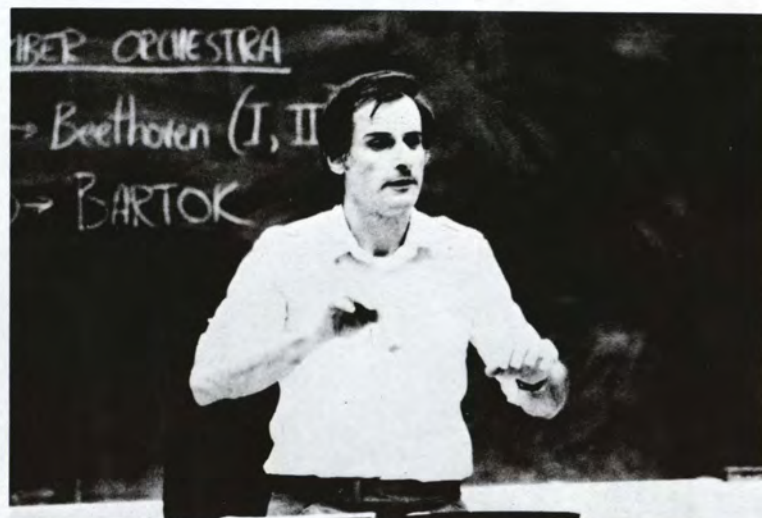
Article by Angela Rehal.

Top Left: Dorothy Knee takes a look at a Math book in the book store. **Left:** Just stepping in from the cold, Jane Eckerman stops for a short break. **Bottom: (Left to Right):** Commuters, Nancy McCoy, Jodi Dorn and Michelle Winkler study together in Buckingham's.

155



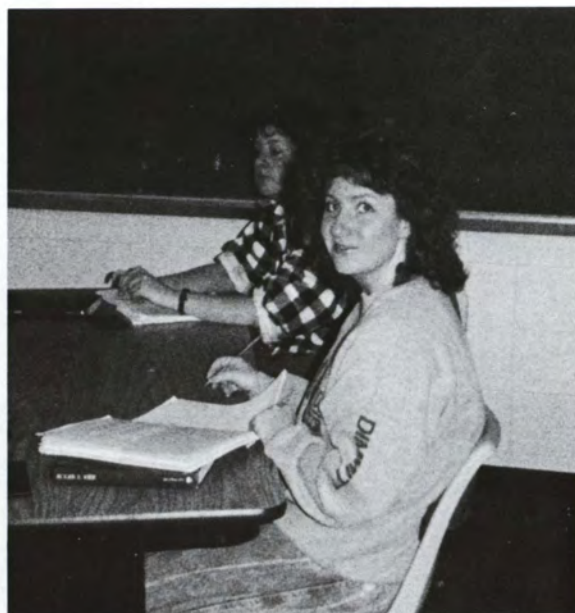




157









A Few Scenes From The 1988



Extra Effort!



Security National Bank
Downtown & Morningside

Member FDIC

Marriot Food Service

Morningside College
Sioux City, Iowa 51106
712-274-5177

Verzani Printing & Lithographing

910 1/2 Morningside Ave.
Sioux City, Iowa 51106
712-276-2026

161

Beane Plumbing

4118 Morningside Ave.
Sioux City, Iowa 51106
712-276-4213



Thank You . . .

All Advertisers

Homecoming Talent Show . . .



The Nightclub With The Good Time Guaranteed!
277-2075 2001 Leech Ave.

RENT-TO-OWN

FURNITURE & APPLIANCES



Whirlpool

- Color TV's, VCR's & Stereos
- Washers & Dryers, Refrigerators
- Furniture Rentals
- Movie Rentals

No Down Payment
No Credit Check

274-1540
Doux City

Transit Plaza Center
2446 Transit



A & A Photo
And Camera

1505 Pierce 258-1650
2615 Hamilton (One Hour Service) 233-3065
3905 Transit 276-5751
10% Discount With College ID



CONEY ISLAND



Serving The Public For Over 60 Years
Downtown Marketplace
Southern Hills Mall

Nya
Kadenge

President

Marla
Geary

Vice President

Andrea
Lindgren

Secretary

Robin
Wells

Treasurer

Tami
Hedges

Student Advocate

Morningside College Student Government
There For You!

274-5174
or
274-5175





**Morningside
Bank & Trust**

Has . . .

Money To Learn!



Morningside
Bank & Trust
Your Student
Loan Center

1901 Morningside Avenue
276-5331 Member FDIC

5 Locations To Serve You

Southern Hills Mall

LeMars
Sioux Center
Alton/Orange City
Remsen



The Hair Lift

Hair Care For Men And Women



276-8183
5400 Morningside Ave.
Sioux City, IA 51106



We're Payless Cashways, your total Home improvement source!

We've been serving Siouxland since 1947, offering everyday low prices on over 14,000 items of quality name brand merchandise, a full-service lumberyard & a fully stocked warehouse — everything you need for your home, farm or ranch project in one convenient location!

Great Selection, quality merchandise, everyday low prices & helpful service — four good reasons for us to be Siouxland's "HOME IMPROVEMENT SOURCE!"

Iowa's Complete Building Materials Store
1801 Dace Ave. (712) 277-1431

DON'T DO IT YOURSELF WITHOUT US.

Autographs

Autographs

Autographs

Autographs

Autographs

Editor's Flashback

Looking back at the 1987-88 school year, I see a lot of enthusiasm, both in the students and the Sioux Staff. This isn't normal! With this attitude, my staff and I concluded that the phrase, "Why Be Normal?" summed up the year quite nicely. Since this is my last year as Editor-in-Chief, (I love that title!) I decided to put all I had into this book and try to make it the funnest and best ever. I hope I succeeded.

I want to thank everyone that helped along throughout the process. My assistant editor, Laurie Harpenau, was a blessing to have on my staff. She helped keep the workload down, and keep me out of trouble! My staff, they were also my friends, which is nice, and were always helpful as well as enthusiastic! Kent Kennedy and Max Sharp, my financial and faculty advisors. They were super, giving my advice and patience. Mark Gambiana and Joyce Dawson, who had the extra picture or last minute detail that I always needed. Also, Teresa Ronfeldt Moore, my Taylor Publishing Representative. She always had terrific comments and advice. Teresa also was a good morale booster when I felt low. But most of all, the thanks go to all the Faculty, Staff, Administration, and yes, especially you . . . Morningside's Students! You were all very cooperative, and this book could not have been so abnormal without you. Thanks a lot!

Sincerely,
Valerie Johnson McMullen
Editor-In-Chief.





Colophone

This 1987-88 Sioux Yearbook was planned, designed, and prepared by the yearbook staff of Morningside College.

We used 36 points Bodoni Bold for our headlines and 24 point for our subheads. All of our copy is in 10 point Bodoni with captions set in 8 point. Each page is printed on 100% enamel paper. Our cover was designed by the editor and was applied through a silkscreening process. Our endsheets were tan and contained the Table of Contents, Editor's Flashback, and this Colophone. Bindings were Smyth sewn. The size was a 9 by 9 square book. Maybe we'll start a trend! We also used TypeVision and IndexVision to send all of the copy to the plant.

We sold 450 copies of the 169 page Sioux Yearbook, which was printed by Taylor Publishing Company, 1550 West Mockingbird Lane, Dallas, Texas. We sold each copy for \$12.00. The remaining balance came from our advertising revenue and a Student Government allocation. These funds were used to cover print costs and photography expenses.

