

ME

SIoux















# Sioux

1960  
MORNINGSIDE COLLEGE  
SIOUX CITY, IOWA









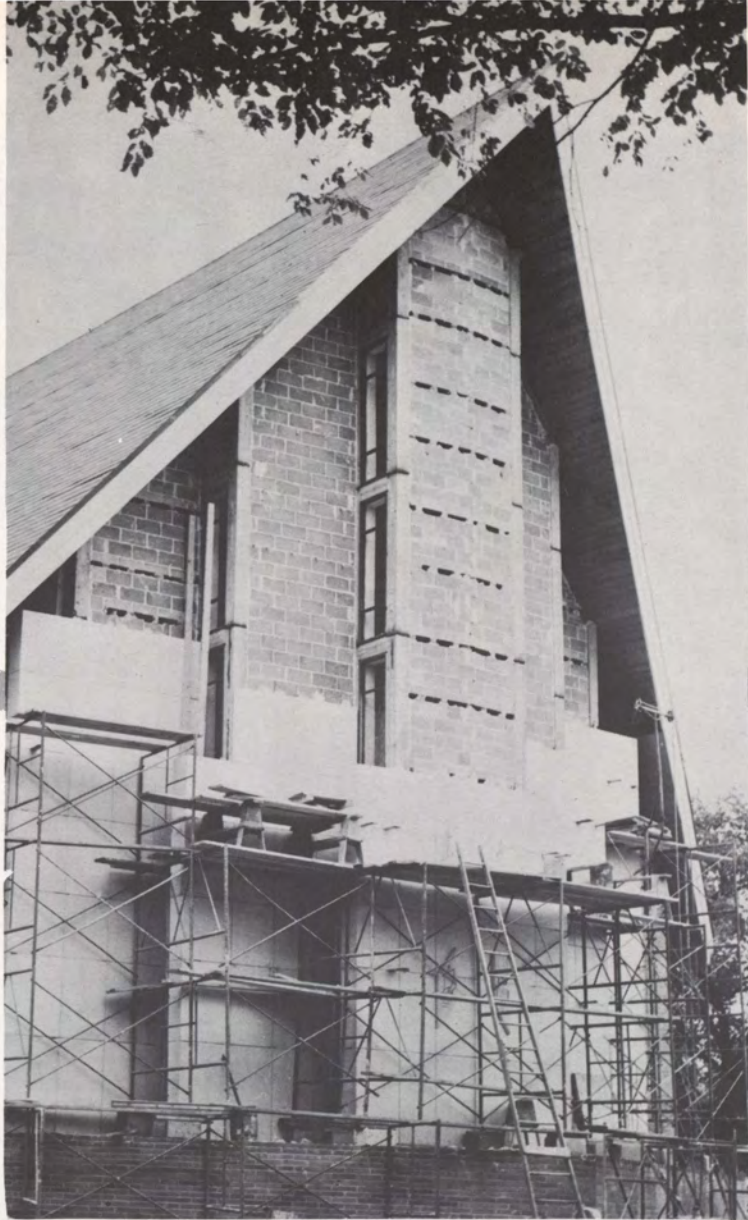
## FOREWORD

A yearbook should be more than a pictorial record of the activities of a schoolyear. It must attempt to catch the spirit of the school, the goals toward which its students are striving.

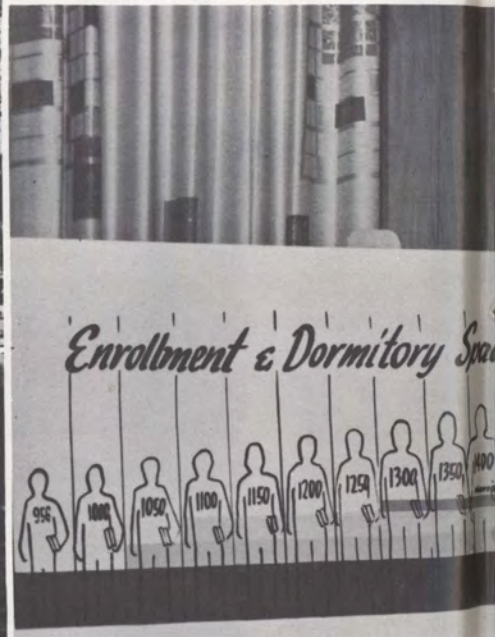
It is for this reason that we have chosen the circle as our design. The balance and continuousness of the circular line symbolize the breadth of education and experience which is the purpose of the liberal arts college.

It is the ideal of Morningside.





# Dedication





# to Progress



The essence of growth is change. There has been a quickening of tempo at Morningside.

One after another, the new and renovated buildings are rising from speculation to proud reality.

... the faculty roll has grown, the number of doctorates increased.

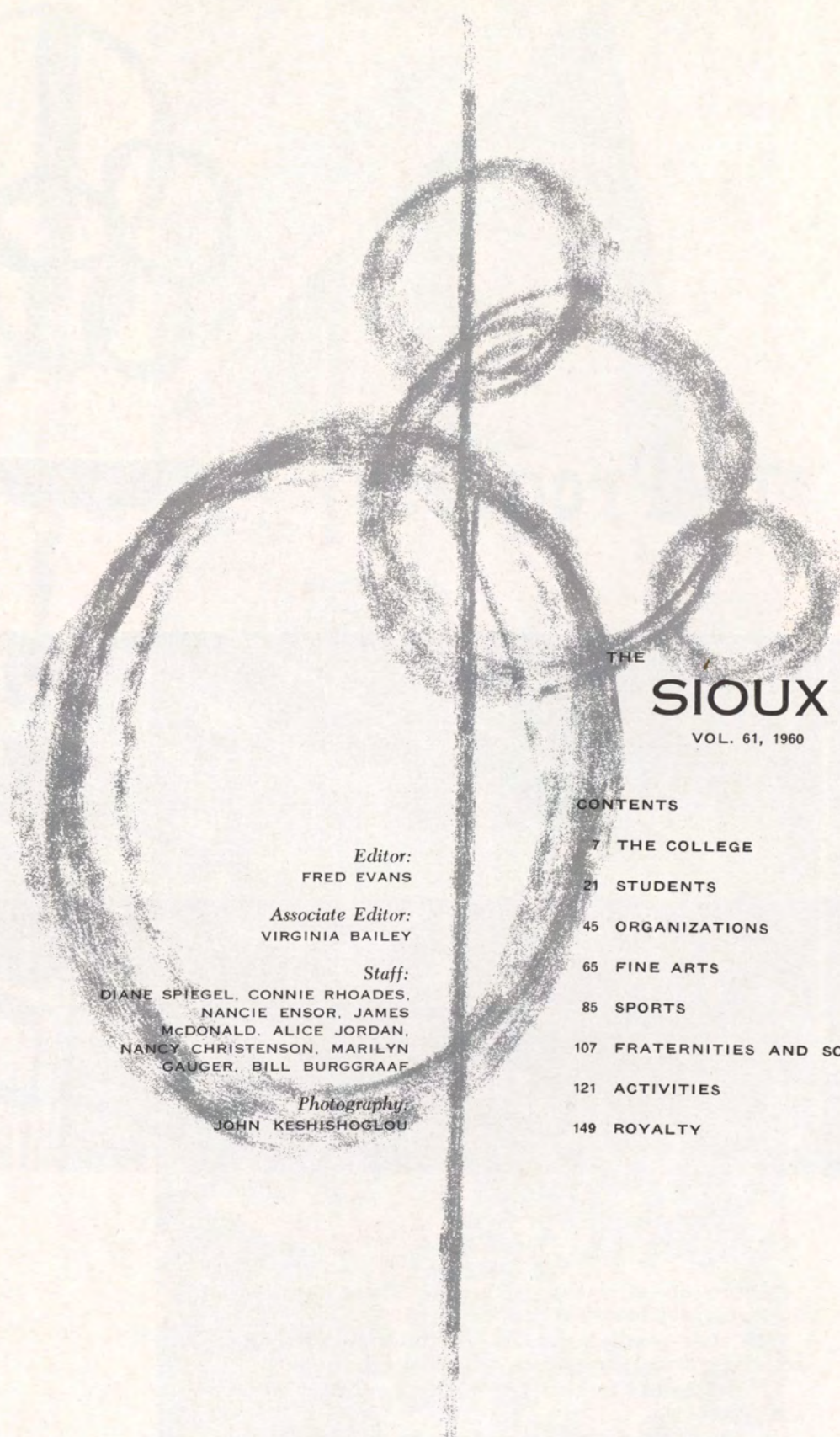
... the Maroons were re-christened the Morningside Chiefs.

... the leadership workshop has become an established tradition.

... Religion in Life Week has grown into prominence  
... and honor system studied.

We, the editors, dedicate the 1960 Sioux of Morningside College to Progress.





THE  
**SIoux**

VOL. 61, 1960

CONTENTS

7	THE COLLEGE
21	STUDENTS
45	ORGANIZATIONS
65	FINE ARTS
85	SPORTS
107	FRATERNITIES AND SORORITIES
121	ACTIVITIES
149	ROYALTY

*Editor:*  
FRED EVANS

*Associate Editor:*  
VIRGINIA BAILEY

*Staff:*  
DIANE SPIEGEL, CONNIE RHOADES,  
NANCIE ENSOR, JAMES  
MCDONALD, ALICE JORDAN,  
NANCY CHRISTENSON, MARILYN  
GAUGER, BILL BURGGRAAF

*Photography:*  
JOHN KESHISHOGLOU





# The College









LEWIS HALL

MARIAN JONES HALL OF CULTURE







CHARLES CITY HALL OF MUSIC

GRACE METHODIST CHURCH







LILLIAN E. DIMMITT HALL FOR WOMEN

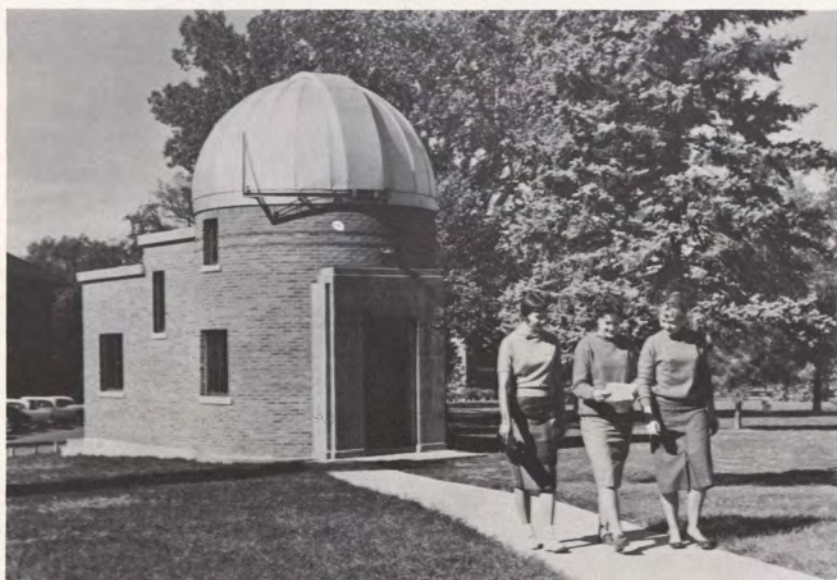
DORMITORY FOR MEN







STUDENT PUBLICATIONS BUILDING



JAMES H. DONOGHUE OBSERVATORY

A. W. JONES HALL OF SCIENCE







GEORGE M. ALLEE GYMNASIUM



ART DEPARTMENT

RELIGIOUS LIFE CENTER







**J. RICHARD PALMER**

A.B., Dakota Wesleyan University; Th.M.,  
Illiff School of Theology; LL.D., Rocky  
Mountain College; D.D., Dakota Wesleyan  
University.

PRESIDENT OF THE COLLEGE



A REAL GIRL FRIDAY. MRS. MAXINE PERCELL, HAN-  
DLES AFFAIRS SMOOTHLY AS SECRETARY TO THE  
PRESIDENT.



DEAN OF THE COLLEGE

**J. CLIFFORD HOLMES**

A.B., University of Redlands; M.A., Ph.D.,  
University of Denver.



SECRETARY TO DEAN HOLMES, MRS. FRANCES HOLCOMB, AND THE DEAN OF WOMEN AND MEN SECRETARY, MRS. BETTY KARST, ARE FAMILIAR FACES TO ALL MORNINGSIDERS. MRS. KARST ALSO HEADS THE STUDENT EMPLOYMENT BUREAU.







## DEANS

**STANLEY GRIEGG**  
Assistant Dean of Men, A.B., Morningside College.

Dean of Men, Miles Tommeraasen, is on sabbatical leave completing his doctorate degree.



**LOLA JACOBS CLARKSON**  
Dean of Women; A.B., Monmouth College;  
M.A., Northwestern University.





## ADMINISTRATION

### ELWOOD OLSEN

Business Manager and Treasurer, A.B., Morningside College; Juris D., State University of Iowa; LL.M., George Washington University.

### ROBERT MILLER

Director of Admissions, B.A., Morningside College.

### LEO HARRIS

Accountant, B.A., Morningside College.

### LOUIS CROSTON

Alumni Director, B.A., Morningside College

### IRA GWINN

Registrar, Administrative Assistant to President, A.B., Morningside College; M.S., State University of Iowa.



### Robert Phelps

Assistant Director of Public Relations and Assistant Professor of Journalism. B.A., Morningside College; M.A., Syracuse University.

### Harold Poppen

Admissions Counselor.

### Albert Buckingham

Director of Athletics. A.B., Morningside College; A.M., Stanford University.

### Thomas Watt

Admission Counselor, A.B., Morningside College.

### Craig Croston

Admissions Counselor.

### John Pommrehn

Admissions Counselor, A.B. Morningside College.

## LIBRARIAN

### VIRGIL WYNNE

Director of Library Services, Associate Professor of Library Science, B.S., Concord College; M. A., George Peabody College.



## ART

### WILLIAM ZIMMERMAN

Associate Professor of Art. B.F.A., M.F.A., B.A.E., Art Institute of Chicago, University of Chicago.

### JEAN McWHORTER

Assistant Professor of Art. B.F.A., M.F.A., University of Georgia.







## BIOLOGY

### Harold Rundell

Associate Professor of Biology. B.S., South Dakota State College; Ph.D., State University of Iowa.

### Deloris Palmquist

Assistant Professor of Biology. B.S. and M.S., University of South Dakota.

### Robert Meloy

Associate Professor of Biology and Chemistry. B.S., Morningside College; M.A., University of South Dakota.

## CHEMISTRY

### ROBERT MELOY

Associate Professor of Chemistry. B.S., Morningside College; M.A., South Dakota University.

### THEODORE PROKOPOV

Professor of Chemistry. B.S., M.S., Ph.D., University of Odessa, Ukraine.

### WILLIAM YOCKEY

Assistant Professor of Chemistry. B.A., Morningside College; M.S., Pennsylvania State University.



## EDUCATION

### MORRIS STREET

Professor of Education. A.B., Wm. Jewell College; M.S., Iowa State University; Ph.D., State University of Iowa.

### MARCIA McNEE

Associate Professor of Elementary Education. A.B., Upper Iowa University; A.M., University of Chicago.

### RUSSELL EIDSMOE

Professor of Education. A.B., Yankton College; A.M., University of South Dakota.



## BUSINESS

### WILLIAM EBERLE

Instructor in Economics and Business Administration. A.B., Morningside College.

### WILLIAM SPORNITZ

Associate Professor of Business Administration. B.S., A.M., University of North Dakota.

### LAUREL PEASE

Associate Professor of Economics and Business Administration. B.A., Los Angeles State College.

### DONALD PROTEXTER

Assistant Professor of Economics and Coach. B.S., Morningside College; M.S., Drake University.

### RUTH LARSON

Assistant Professor of Secretarial Science. B.S., South Dakota University; M.A., Boston University.





## ENGLISH

### **WILLIAM PALMER**

Associate Professor of English. A.B., Union College; M.A., Columbia University; Ph.D., University of Kansas.

### **LAURA SIMONSON**

Assistant Professor of English. B.E., Moorhead State Teachers College; M.A., University of Colorado.

### **WILLIAM KNEPPER**

Instructor of English. A.B., University of Minnesota; M.A., University of Minnesota.

### **BEATRICE TIFT**

Assistant Professor of English. A.B., Wayne State Teachers College; M.A., University of Nebraska.

### **RAYMOND NELSON**

Assistant Professor of English. A.B., University of Minnesota; B.D., Trinity Seminary and Bible College; M.A., University of Minnesota.



## HISTORY

### **ALBERT SELLEN**

Associate Professor of History and Political Science. A.B., Washburn University; A.M., Ph.D., University of Chicago.

### **CLIFFORD BOWMAN**

Associate Professor of History and Political Science. A.B., Augustana College; A.M. University of Nebraska.

### **LAURA SIMONSON**

Instructor in History. B.E., Moorhead State Teachers College; M.A., University of Colorado.

### **STANLEY GREIGG**

Instructor in History. A.B., Morningside College.

### **MALLAPPA VITTAL**

Assistant Professor of History and Political Science. B.S.C., Andhra University, India; B.A., L.B., Osmania University, India; M.A., Drake University.

## LANGUAGES

### **RICHARD OLMSTED**

Professor of Foreign Languages; A.B., M.A., Ph.D., University of Minnesota.

### **HERBERT HINES**

Associate Professor of Languages and Humanities. A.B., A.M., Harvard University; B.D., Ph.D., University of Chicago.



## HOME ECONOMICS



### **LORRAINE MARQUARDT**

Assistant Professor of Home Economics. B.S., M.S., University of Wisconsin.





## LIVESTOCK MARKETING

### JOSEPH HALE

Professor of Livestock Marketing. B.S., Morningside College.

## MATHEMATICS

### GLEN BUSHYAGER

Professor of Mathematics. B.S., Alleghany College; A.M., Pennsylvania State College.

### WILBER MOSER

Associate Professor of Mathematics. A.B., Montana State University; M.A., Ed.D., Stanford University.



## MUSIC

### Richard Faith

Assistant Professor of Piano. B.M., M.M. Chicago Musical College.

### Lois Grammer

Associate Professor of Music Education. B.A., University of Nebraska; M.M., Northwestern University.

### James Hustis

Associate Professor of Music and Director of Bands. B.S., M.S., Julliard School of Music.

### Leo Kucinski

Professor of Violin and Orchestra and Conductor of Sioux City Symphony. B.M., Mus.D., Morningside College.

### Donald Morrison

Associate Professor of Musical Theory. B.M., Michigan State College; M.M., Eastman School of Music; Ph.D., University of Indiana.

### Elizabeth Quam

Instructor in Cello. B.M., University of Southern California; M.A., University of Iowa.

### C. Wade Raridon

Assistant Professor of Voice. B.A., M.A., State University of Iowa.

### Ronald Tyree

Assistant Professor of Woodwind Instruments. B.A., M.A., Ph.D., State University of Iowa.

### James Wood

Associate Professor of Music. A.B., Macalaster College; M.A., University of Iowa; S.M.D., Union Theological Seminary.







## PHILOSOPHY

### JOSEPH UEMURA

Professor of Philosophy. A.B., University of Denver; Th.M., Iliff School of Theology; Ph.D., Columbia University.

### ROBERT HALFORD

Assistant Professor of Physical Education and Coach. B.S., Morningside College; M.S., University of Illinois.

### CHARLES OBYE

Assistant Professor of Physical Education and Coach. B.S., Morningside College; M. A., State University of Iowa.

### ALBERT BUCKINGHAM

Professor of Physical Education. A.B., Morningside College; A.M., Stanford University.

### NITA HARRIS

Instructor of Physical Education. B.S., Morningside College.

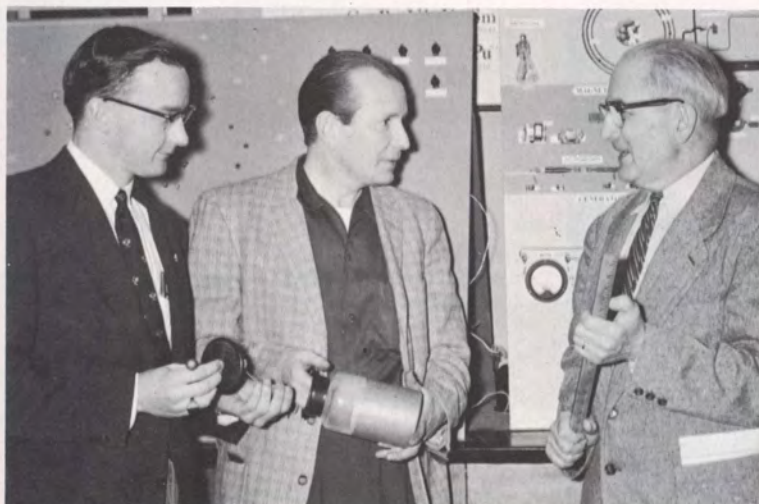
### JOHN JENNETT

Assistant Professor of Physical Education and Coach. B.S., Drake University; M.S.,

## PHYSICAL EDUCATION



## PHYSICS



### JAMES GALLI

Assistant Professor of Physics and Earth Sciences. B.S., Morningside College; M.S., Ohio State University.

### STERLING STEWART

Assistant Professor of Physics. A.B., Morningside College; M.A., University of Washington; Ed.D., University of Nebraska.

### IRA GWINN

Associate Professor of Physics. A.B., Morningside College; M.S., State University of Iowa.

## PSYCHOLOGY

### LYLE HENRY

Professor of Psychology. B.S., Des Moines University; M.A., Ph.D., University of Iowa.







## RELIGION

### WALTER BENJAMIN

Associate Professor of Religion. A.B., Hamline University; B.D., Garrett Graduate School of Theology; Ph.D., Duke University.

### JOHN GINGERICH

Assistant Professor of Religion and Director of Religious Life. A.B., Oklahoma City University; Th.M. and Th.D., Iliff School of Theology.

## SOCIOLOGY

### EDWIN BAUER

Senior Professor of Sociology. A.B., Iowa Wesleyan; B.D., Garrett Graduate School of Theology; A.M., Drake University; Ph.D., State University of Iowa.

### H. WAYNE JOHNSON

Instructor in Sociology. B.S., Morningside College; M.A., State University of Iowa; A.M., Indiana University.



## SPEECH

### FRED LEE

Assistant Professor of Speech. B.S., Black Hills Teachers College; M.S., Purdue University.

### LOLA JACOBS CLARKSON

Associate Professor of Speech. A.B., Monmouth College; M.A., Northwestern University.

### RICHARD COMPTON

Instructor in Speech

### ROBERT QUINN

Assistant Professor of Speech and Dramatics. B.F.A., M.F.A., Goodman School of Drama.



# Students









# SENIORS



SENIOR CLASS OFFICERS. L. TO R., HAROLD POPPEN, VICE-PRESIDENT; ROSALEE JACOBSON SPROUT, PRESIDENT; MARY LOUISE LUNDQUIST, SECRETARY; FRED EVANS, TREASURER.

- Anderson, Al**  
Sioux City, Iowa
- Bartz, Connie Sproul**  
Fort Dodge, Iowa
- Bartz, Harvey**  
Iowa Falls, Iowa
- Bata, Joseph**  
Sioux City, Iowa
- Bedell, Bruce**  
LeMars, Iowa
- Bedell, Julia Keys**  
Macedonia, Iowa
- Birkbeck, Nancy**  
Mason City, Iowa
- Block, Jerry**  
Davenport, Iowa
- Blount, William**  
Maquoketa, Iowa
- Braheny, John**  
Elgin, Illinois
- Brown, Fred**  
Lake City, Iowa
- Brown, Kay**  
Lake City, Iowa
- Bruce, Harold**  
Sioux City, Iowa
- Brumas, John**  
Panama City, Panama
- Burg, Diana**  
Wallingford, Iowa





## SENIORS

THE UNION IS A LEISURELY PLACE. TIME IS MARKED BY THE NUMBER OF HANDS PLAYED. AND NO ALARM CLOCKS OR CLASS BELLS CAN INTERRUPT THE CONCENTRATION ON A HAND OF CARDS.



**Burgeson, Ann**  
Council Bluffs, Iowa

**Burggraaf, William**  
Inwood, Iowa

**Carey, Karen**  
Estherville, Iowa

**Carlson, Carl**  
Sioux City, Iowa

**Carlson, Robert**  
Onawa, Iowa

**Carpenter, Gary**  
Onawa, Iowa

**Casperson, Beverly**  
Woodbine, Iowa

**Chapman, David**  
Wadena, Minnesota

**Chapman, Martin**  
Wadena, Minnesota

**Cobain, Roberta**  
Sioux City, Iowa

**Cochrane, James**  
Larrabee, Iowa

**Conover, Kay**  
Sioux City, Iowa

**Cross, Marlys**  
Sioux City, Iowa

**David, Wayne**  
Sioux City, Iowa

**Delfs, Dollie**  
Sioux City, Iowa

**Delzell, W. Wallace**  
Sioux City, Iowa

**Domino, Larry**  
Sac City, Iowa

**Dow, Eugene**  
Bayonne, New Jersey

**Dykstra, Jerold**  
Sioux City, Iowa

**Esmay, James**  
Rockwell City, Iowa

**Evans, Fred**  
Sioux City, Iowa

**Fineran, Fern Venekamp**  
Ruthton, Minnesota

**Folsom, Russell**  
Sioux City, Iowa

**Forbes, Larry**  
Sioux City, Iowa

**Fredrick, William**  
Canal Zone



**Garwood, Judson**  
Sioux City, Iowa

**Gilbert, John**  
Sutherland, Iowa

**Gimer, Arlis**  
Renwick, Iowa

**Gimer, Eugene**  
Renwick, Iowa

**Goecke, Kenneth**  
Breda, Iowa

**Gustafson, Richard**  
Albert City, Iowa

**Hammer, Robert**  
Sheldon, Iowa

**Hampel, William**  
Garner, Iowa

**Hanson, Nancy**  
Los Angeles, California

**Hedrick, Fred**  
Sioux City, Iowa

**Heesch, Kea**  
Fort Dodge, Iowa

**Hilger, Robert**  
Correctionville, Iowa

**Holdercroft, Howard**  
Sioux City, Iowa

**Haupt, Jerry**  
Sioux City, Iowa

**Jiskoot, Rodney**  
Sheldon, Iowa

**Johnson, Douglas**  
Sheldon, Iowa

**Johnson, Jae**  
Hartley, Iowa

**Johnson, Ronald**  
Sioux City, Iowa

**Johnson, William**  
Sioux City, Iowa

**Keph, Roger**  
Sioux City, Iowa

**Kiel, Raymond**  
Sioux City, Iowa

**Killam, Phyllis Mackintosh**  
Sioux City, Iowa

**Kohnke, Daryl**  
Sheldon, Iowa

**Kolbe, Bruce**  
Nemaha, Iowa

**Kolbeck, Gary**  
Webster City, Iowa

**Lange, D. Frank**  
Sioux City, Iowa

**Larson, Cecil**  
Garner, Iowa

**Lehnus, Richard**  
Rolfe, Iowa

**Lundquist, Mary**  
Aurelia, Iowa

**Madsen, Betty**  
Cylinder, Iowa

**Magill, Jerry**  
Jefferson, Iowa

**Majorowicz, Kathryn**  
Rolfe, Iowa

**Malchow, Ronald**  
Lakefield, Minnesota

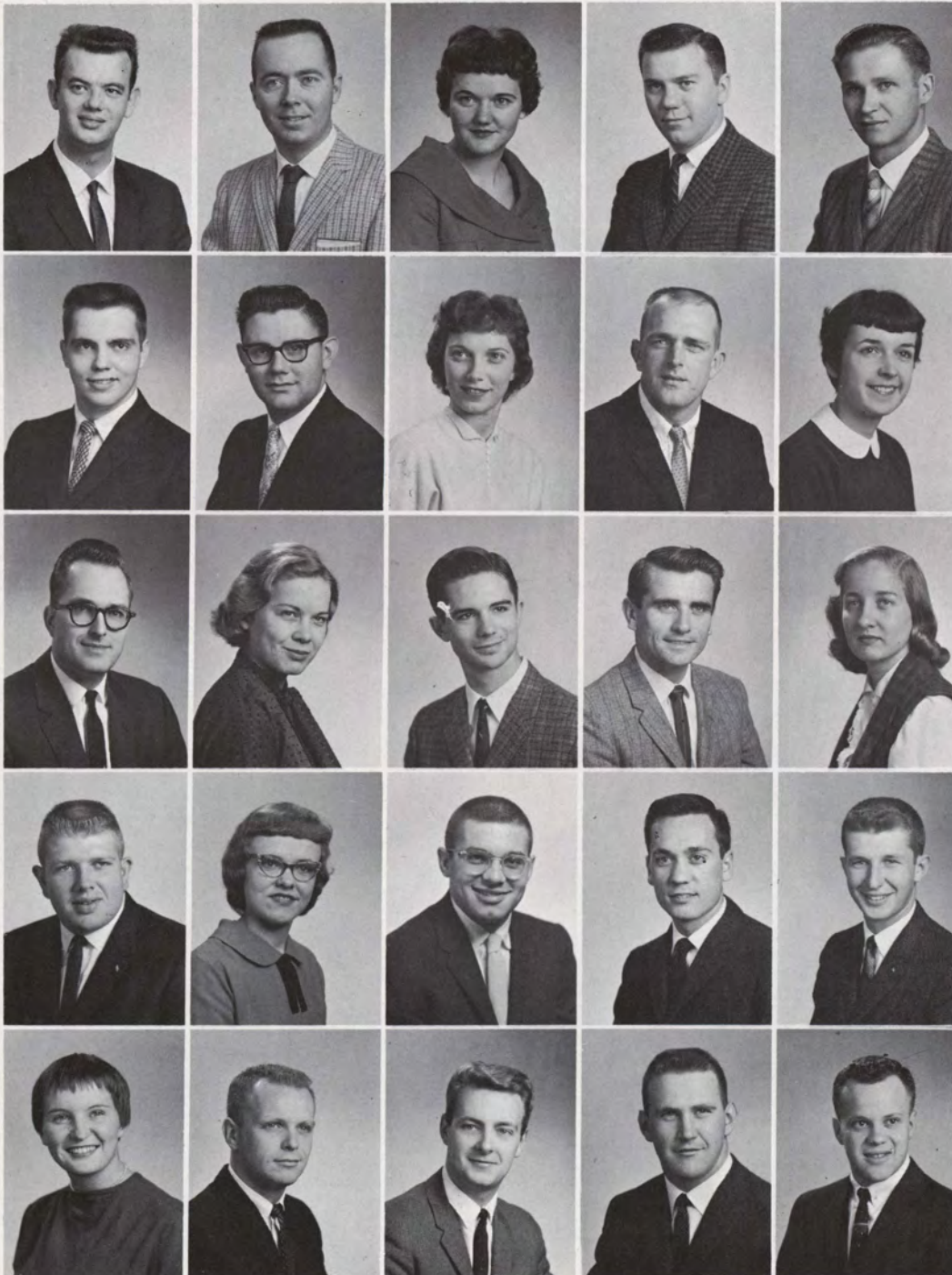
**Manker, Larry**  
Lawton, Iowa

**Mathiasen, Christy**  
Onawa, Iowa





## SENIORS



**McKnight, Jerry**  
Sioux City, Iowa

**McManis, Jerry**  
Sioux City, Iowa

**Metcalf, Avalee**  
Sioux City, Iowa

**Micek, Ronald**  
Sioux City, Iowa

**Milarki, Thomas**  
Trenton, New Jersey

**Miquelon, Paul**  
Salix, Iowa

**Mitchell, Gary**  
Lake Park, Iowa

**Moritz, Phyllis Hackett**  
Sioux City, Iowa

**Mounts, Charles**  
Ironton, Ohio

**Niebuhr, Sally Madison**  
Correctionville, Iowa

**Nieuwendorp, Donald**  
Sioux City, Iowa

**Oleson, Carol Van Wyngarden**  
Sioux City, Iowa

**Oliver, Stuart**  
Lawton, Iowa

**Palmer, Charles**  
Algona, Iowa

**Patrick, Sandra**  
Mapleton, Iowa

**Peters, Norman**  
Springfield, Illinois

**Peterson, Connie**  
Sioux City, Iowa

**Peterson, David**  
Nennah, Wisconsin

**Phelps, Joe**  
Sergeant Bluff, Iowa

**Poppen, Harold**  
Alton, Iowa

**Prince, Sally Stuehmer**  
Des Moines, Iowa

**Ridout, William**  
Estherville, Iowa

**Ritz, Gary**  
Sioux City, Iowa

**Roberts, Terry**  
Tecumseh, Nebraska

**Rocklin, Stanley**  
Phoenix, Arizona





A SPELL OF WARM WEATHER BRINGS OUT RESTLESSNESS, DREAMS OF SUMMER AND WEAK EFFORTS AT STUDYING IN THE SHADE.

**Rolfs, Joan**  
Holstein, Iowa

**Rundell, Keith**  
Sioux City, Iowa

**Schnell, JoAnn**  
Ruthven, Iowa

**Seymour, Allen**  
Ocheyedan, Iowa

**Sievert, Mary**  
Charter Oak, Iowa

**Smithson, William**  
Sioux City, Iowa

**Spiegel, Wallace**  
Sibley, Iowa

**Sprout, Rosalee Jacobson**  
Norfolk, Nebraska

**Srb, JoAnn**  
Sioux City, Iowa

**Stachour, Mary**  
Sibley, Iowa

**Stratton, Keith**  
Kingsley, Iowa

**Swanson, Sharon**  
Merrill, Iowa

**Tamminga, George**  
Sioux Center, Iowa

**Temoshek, Donald**  
Sioux City, Iowa

**Tuttle, Lanny**  
Sioux City, Iowa

**Waldo, Robert**  
Sioux City, Iowa

**Wilmath, Charles**  
Harris, Iowa

**Witt, Lee**  
La Canada, California

**Wohlenberg, Linde**  
Hawarden, Iowa

**Zimmer, Norma**  
Howard, South Dakota





# JUNIORS



JUNIOR CLASS OFFICERS, L. TO R., LOWELL WILSON, PRESIDENT; DICK SLATER, VICE-PRESIDENT; NANCY LEWIS, SECRETARY; AL BASKERVILLE, TREASURER.



**Aarnes, Donald**  
South Sioux City, Nebraska

**Anderson, Gary**  
Cleghorn, Iowa

**Anderson, Janice**  
Gowrie, Iowa

**Anderson, Richard**  
Sioux City, Iowa

**Anderson, Virginia**  
Onawa, Iowa

**Andrews, Loren**  
Menville, Iowa

**Anfinson, James**  
Cushing, Iowa

**Arnold, Jeanine**  
Lake Park, Iowa

**Bailey, Virginia**  
Royal, Iowa

**Bartels, Albert**  
Danbury, Iowa

**Baskerville, Allan**  
Garner, Iowa

**Bennett, Carl**  
Sioux City, Iowa

**Biesemeyer, David**  
Renwich, Iowa

**Bishop, Cloyd**  
Archer, Iowa

**Blanchard, Jeanette**  
Humboldt, Iowa



**Blanchfield, Russell**  
Spencer, Iowa

**Blankers, Donald**  
Primghar, Iowa

**Boothby, Richard**  
Holstein, Iowa

**Botwinik, Stewart**  
Bayonne, New Jersey

**Bourret, Ronald**  
Sioux City, Iowa

**Borland, Barry**  
Lake Park, Iowa

**Brinkert, Margo**  
Hartley, Iowa

**Carr, James**  
Allen, Nebraska

**Cline, Janet**  
Sioux City, Iowa

**Cope, Lamar**  
Somers, Iowa

**Crowdson, Peggy**  
Sioux City, Iowa

**Croston, Craig**  
Sioux City, Iowa

**Curry, Roger**  
Ponca, Nebraska

**Davis, James O.**  
Rodney, Iowa

**Den Hartog, Jane**  
Sioux City, Iowa

**Dirks, Florence**  
Milford, Iowa

**Dixon, Robert**  
Correctionville, Iowa

**Dodge, Janna**  
Hartley, Iowa

**Ducommun, Donald**  
Whiting, Indiana

**Easton, Gary**  
Spencer, Iowa

**Edler, Lon**  
Waterloo, Iowa

**Edlund, Robert**  
Sioux City, Iowa

**Ehrhardt, Mary**  
Sac City, Iowa

**Essing, Marvin**  
Palmer, Iowa

**Fenstermann, Duane**  
Strawberry Point, Iowa

**Fick, Arlan**  
Mapleton, Iowa

**Franzen, Joanne**  
Sioux City, Iowa

**Gauger, Marilyn**  
Early, Iowa

**Gesaman, Gary**  
Orange City, Iowa

**Gesaman, Kay Cox**  
Smithland, Iowa

**Goetsch, Sonja**  
Luverne, Iowa

**Guthmiller, Carol Mayer**  
Tripp, South Dakota

**Hansen, Marjorie**  
Forest City, Iowa

**Harmelink, Charma**  
Alton, Iowa

**Harms, Rodney**  
Archer, Iowa





## JUNIORS

"GOOD EVENING, DIMMITT HALL"  
"ONE MOMENT, PLEASE." THE HALL COUNSELOR'S STRUGGLE TO LOCATE A DORMITORY RESIDENT BEFORE HER CALLER HANGS UP.



**Hartman, Robert**  
Alta, Iowa

**Hedges, Kent**  
Scranton, Iowa

**Huff, David**  
Whiting, Iowa

**Idso, Marlin**  
Archer, Iowa

**Jensen, Joy**  
Hampton, Iowa

**Johnson, John**  
Inwood, Iowa

**Johnson, Richard**  
Sioux City, Iowa

**Kaczinski, Eugene**  
Teeds Grove, Iowa

**Kantrovich, Larry**  
Sioux City, Iowa

**Kennedy, James**  
Correctionville, Iowa

**Keshishoglou, John**  
Thessalonika, Greece

**Krause, Clyde**  
Storm Lake, Iowa

**Kruger, Sharon**  
Sioux City, Iowa

**Lease, John**  
Sioux City, Iowa

**Lee, Ronald**  
Soldier, Iowa

**Lehner, Eugene**  
Emmetsburg, Iowa

**Lewis, Nancy**  
Sac City, Iowa

**Lind, John**  
Glidden, Iowa

**Lundy, Dan**  
Sioux City, Iowa

**Luscombe, David**  
Holstein, Iowa

**Martins, James**  
Missouri Valley, Iowa

**Mather, Dan**  
Sergeant Bluff, Iowa

**Maycock, Lanny**  
Sioux City, Iowa

**McLarty, William**  
Sioux City, Iowa

**Menage, Elmer**  
Rock Rapids, Iowa



**Miller, Frank**  
Winnipeg, Canada

**Minear, Lynne**  
Sioux City, Iowa

**Moore, Connie**  
Sioux City, Iowa

**Morse, Gale**  
Sioux City, Iowa

**Morton, Scott**  
Griswold, Iowa

**Mulder, David**  
Alton, Iowa

**Nimmer, Barbara**  
Sioux City, Iowa

**Ogden, Leo**  
Sioux City, Iowa

**Parsons, Earl**  
Spirit Lake, Iowa

**Patterson, Norbert**  
Essex, Iowa

**Peterson, Allan**  
Sioux City, Iowa

**Peterson, Donna**  
Fort Dodge, Iowa

**Powell, George**  
South Sioux City, Nebraska

**Priegnitz, Sharon**  
Calumet, Iowa

**Reinking, Roger**  
Kingsley, Iowa

**Remmers, Sandra**  
Melvin, Iowa

**Rhoades, Connie**  
Ventura, California

**Ridge, Roy**  
Rockwell City, Iowa

**Rodger, Karen**  
Sheldon, Iowa

**Ross, Joan**  
Ocheyedan, Iowa

**Rymill, Joan**  
Sioux City, Iowa

**Sawin, Marian**  
Oto, Iowa

**Schlichting, Duane**  
Cushing, Iowa

**Sharp, Dorothy**  
Milford, Nebraska

**Shattuck, Sandra**  
Sioux City, Iowa

**Simmon, Louise**  
Sioux City, Iowa

**Skaff, Duane**  
Sioux City, Iowa

**Slater, Richard**  
Ottumwa, Iowa

**Sommers, Marilyn**  
Odebolt, Iowa

**Sorum, Lynn**  
Sioux City, Iowa

**Spiegel, Phyllis Drexler**  
Monticello, Iowa

**Stiemke, Richard**  
Larrabee, Iowa

**Stock, James**  
Wall Lake, Iowa

**Stubblefield, Betty**  
Whiting, Iowa

**Sykora, Marion**  
Sioux City, Iowa







## JUNIORS

A SORT OF HUSH FALLS OVER LEWIS HALL AT MID-SEMESTER TEST TIME. AND SUDDENLY THOSE FEW MINUTES BETWEEN CLASS BECOME PRECIOUS.



**Taylor, Donald**  
Odebolt, Iowa

**Taylor, Nancy**  
Sioux City, Iowa

**Thogersen, Terry**  
Moorhead, Iowa

**Thomsen, Lowell**  
Holstein, Iowa

**Tiemens, Theodore**  
Archer, Iowa

**Tuttle, Barbara**  
Inwood, Iowa

**Ver Heul, William**  
Newton, Iowa

**Von Ehwegen, Gerald**  
Terril, Iowa

**Warne, Leland**  
Sioux City, Iowa

**Weber, Gordon**  
Correctionville, Iowa

**West, Nadine**  
Ida Grove, Iowa

**Westman, Ruth Ann**  
Sioux City, Iowa

**Wilcox, Gary**  
Correctionville, Iowa

**Willhoite, Ila Mae**  
Wall Lake, Iowa

**Wilson, Lowell**  
Cherokee, Iowa

**Wolff, Robert**  
Sioux City, Iowa

**Young, Kathie**  
Parma, Ohio

**Zwald, Winola**  
Garner, Iowa



# SOPHOMORES



SOPHOMORE CLASS OFFICERS. L. TO R.: JEAN WILSON, TREASURER; MARY LYNN MOSSENGREN, SECRETARY; LANNY MAYCOCK, VICE-PRESIDENT; STEVE POHLMAN, PRESIDENT.

**Ackley, Michael**  
Pewaukee, Wisconsin

**Anderson, Richard C.**  
Webb, Iowa

**Armstrong, Howard**  
Ponca, Nebraska

**Artz, Claudia**  
Kingsley, Iowa

**Bell, Robert**  
Davenport, Iowa

**Bircher, Leonard**  
Dayton, Iowa

**Blackmer, Bonnie**  
Holstein, Iowa

**Bohn, Karen**  
Spirit Lake, Iowa

**Bonine, Carol**  
Beresford, South Dakota

**Boone, Paul**  
Woodbine, Iowa

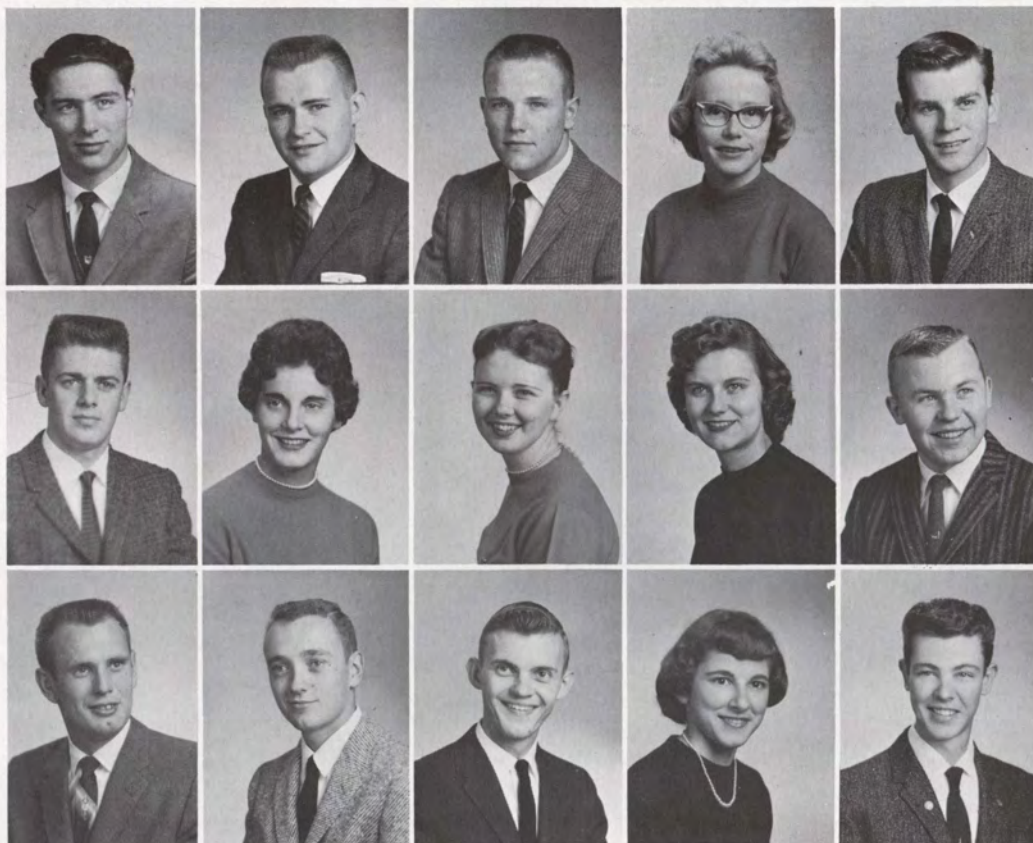
**Bulgrin, Donald**  
Milwaukee, Wisconsin

**Bullock, Alfred**  
Sioux City, Iowa

**Burgeson, David**  
Sioux City, Iowa

**Bushyager, Diane**  
Sioux City, Iowa

**Call, Allen**  
Ida Grove, Iowa





## SOPHOMORES

IT'S A LONG WALK, SOMETIMES, BACK TO  
THE DORM AFTER CLASSES.



**Carlson, Karen Kay**  
Spirit Lake, Iowa

**Carter, Elaine**  
Sergeant Bluff, Iowa

**Christenson, Nancy**  
Royal, Iowa

**Christianson, Eldon**  
Fostoria, Iowa

**Ciatsko, Frank**  
Cedar Rapids, Iowa

**Conover, Wendell**  
Ida Grove, Iowa

**Creswell, Kent**  
Reinbeck, Iowa

**Curl, Dwayne**  
Sioux City, Iowa

**De Moss, Karol**  
Fonda, Iowa

**Dietschy, Gene**  
Sioux City, Iowa

**Dirks, Claire**  
Sioux City, Iowa

**Dirks, Raymond**  
Sioux City, Iowa

**Dodge, Valois**  
Milford, Iowa

**Drommer, Nancy**  
Pomeroy, Iowa

**Duff, Jeannie**  
Sioux City, Iowa

**Dugdale, Nancy**  
Modale, Iowa

**Edwards, William**  
Primghar, Iowa

**Ensor, Nancie**  
Sioux City, Iowa

**Erbes, David**  
Sioux City, Iowa

**Erbes, Fred**  
Sioux City, Iowa

**Escala, Carlos**  
Hafredo, Panama

**Fedalizo, Leilani**  
Wailuku, Maue, Hawaii

**Fullenworth, Karlton**  
Marathon, Iowa

**Gamel, Clarence**  
Sioux City, Iowa

**Garretson, Robert**  
Peoria, Illinois



**Getting, John**  
Sanborn, Iowa

**Gilbert, Daniel**  
Sutherland, Iowa

**Gilbert, Thomas**  
Rock Rapids, Iowa

**Givens, Henry**  
Richmond Heights, Florida

**Glass, Charles**  
Sac City, Iowa



**Gogen, Ahmet**  
Istanbul, Turkey

**Gordon, John**  
Lake City, Iowa

**Graham, Pat**  
Sioux City, Iowa

**Gregalunas, Luane**  
Sioux City, Iowa

**Greimer, Emil**  
Sioux City, Iowa



**Guardia, Marysol**  
Port-au-Prince, Haiti

**Haas, Judith**  
Rock Valley, Iowa

**Hansen, Kent**  
Sioux City, Iowa

**Hansen, Wendell**  
Soldier, Iowa

**Harward, Robert**  
Sioux City, Iowa



**Hass, Janet**  
Harris, Iowa

**Heater, Richard**  
Rippey, Iowa

**Higgins, Carol**  
Estherville, Iowa

**Higgins, Marilyn**  
Gilmore City, Iowa

**Hill, Max**  
Ayrshire, Iowa



**Hinton, Myrna**  
Rockwell City, Iowa

**Hope, Becky**  
Humboldt, Iowa

**Hull, James**  
Dunlap, Iowa

**Hutchinson, Reginald**  
Gilmore City, Iowa

**Inman, James**  
Storm Lake, Iowa



**Inman, Karen**  
Sioux City, Iowa

**Iossi, Roger**  
Davenport, Iowa

**Jensen, Dennis**  
Schleswig, Iowa

**Johnson, Blayne**  
Ocheyedan, Iowa

**Johnson, Robert W.**  
Sioux City, Iowa



**Jones, Donna**  
Sioux City, Iowa

**Jones, Rosemary**  
Storm Lake, Iowa

**Jordan, Alice**  
Gowrie, Iowa

**Joy, Linda**  
Rapid City, South Dakota

**Kellogg, Thomas**  
Park Ridge, Illinois





## SOPHOMORES



**Knudson, Annette**  
Sioux City, Iowa

**Kokenge, Gordon**  
Alton, Iowa

**Lawson, Russell**  
Williams, Iowa

**Lenz, Arlene**  
Alta, Iowa

**Le Vere, Barbara**  
Des Moines, Iowa

**Lovrien, Richard**  
Quimby, Iowa

**Major, Glenn**  
Kingsley, Iowa

**Marsh, Judith**  
Sioux City, Iowa

**McCutcheon, Barbara**  
Eagle Grove, Iowa

**McDonald, James**  
Sibley, Iowa

**McManis, Lorraine**  
Sioux City, Iowa

**McMurray, Susan**  
Sioux City, Iowa

**Mossengren, Mary**  
Webb, Iowa

**Myrick, Joyce**  
Harris, Iowa

**Neal, Beverly**  
Ridgewood, New Jersey

**Newman, Roger**  
Spencer, Iowa

**Nielsen, Patsy**  
Onawa, Iowa

**Noonan, Margaret**  
Sioux City, Iowa

**O'Harrow, Robert**  
Sioux City, Iowa

**Olson, Sue**  
Stratford, Iowa

**Ostendorf, Guenther**  
Elsfleth, Germany

**Parden, James**  
Sioux City, Iowa

**Patrick, Joel**  
Mapleton, Iowa

**Patton, Carol**  
Rock Rapids, Iowa

**Pech, Kay**  
LeMars, Iowa

**Peterson, Darla**  
Sioux City, Iowa

**Pettitt, Donna**  
Riceville, Iowa

**Pohlman, Steven**  
Sibley, Iowa

**Potter, Marilynne**  
Sioux City, Iowa

**Puckett, James**  
Jackson, Nebraska

**Rahn, Richard**  
Sioux City, Iowa

**Rasmussen, Katherine**  
Manilla, Iowa

**Reaman, Emerson**  
Yetter, Iowa

**Reynders, Donald**  
Sioux City, Iowa

**Rieckmann, Ronald**  
Kingsley, Iowa



**Roths, Carl**  
Rock Rapids, Iowa

**Sanborn, Barbara**  
Sioux City, Iowa

**Schmidt, Richard**  
Holstein, Iowa

**Shoemaker, Marcia**  
Winterset, Iowa

**Skaggs, Joyce**  
Cherokee, Iowa

**Sorensen, Larry**  
Milford, Iowa

**Soukup, Roger**  
Woodbine, Iowa

**Spiegel, Diane**  
Sibley, Iowa

**Stachour, James**  
Sibley, Iowa

**Stieglmeyer, Deanna**  
Sioux City, Iowa

**Stodden, James**  
Lake View, Iowa

**Sulsberger, Shardell**  
Hornick, Iowa

**Te Stroete, Paul**  
Hospers, Iowa

**Thorngren, Peter**  
Palembug, Sumatra

**Tollakson, John**  
Sioux Rapids, Iowa

**Torres, Nereyda**  
Cecilia, Panama

**Trafton, Virginia**  
Sioux City, Iowa

**Valeika, Gary**  
Sioux City, Iowa

**Treiber, Dennis**  
Alcester, South Dakota

**Treiber, Ronald**  
Hawarden, Iowa

**Wainwright, Neil**  
Sioux City, Iowa

**Wand, Jay**  
Breda, Iowa

**Wardlow, Gary**  
Sioux City, Iowa

**Warner, Jack**  
Missouri Valley, Iowa

**Watt, Richard**  
Sioux City, Iowa

**Wharten, Millie**  
Byron, Minnesota

**Wilcox, Leonard**  
Correctionville, Iowa

**Willhoite, Ray**  
Wall Lake, Iowa

**Williams, Linda**  
Dayton, Iowa

**Wilmarth, Charlene**  
Harris, Iowa

**Wilson, Jean**  
Lawton, Iowa

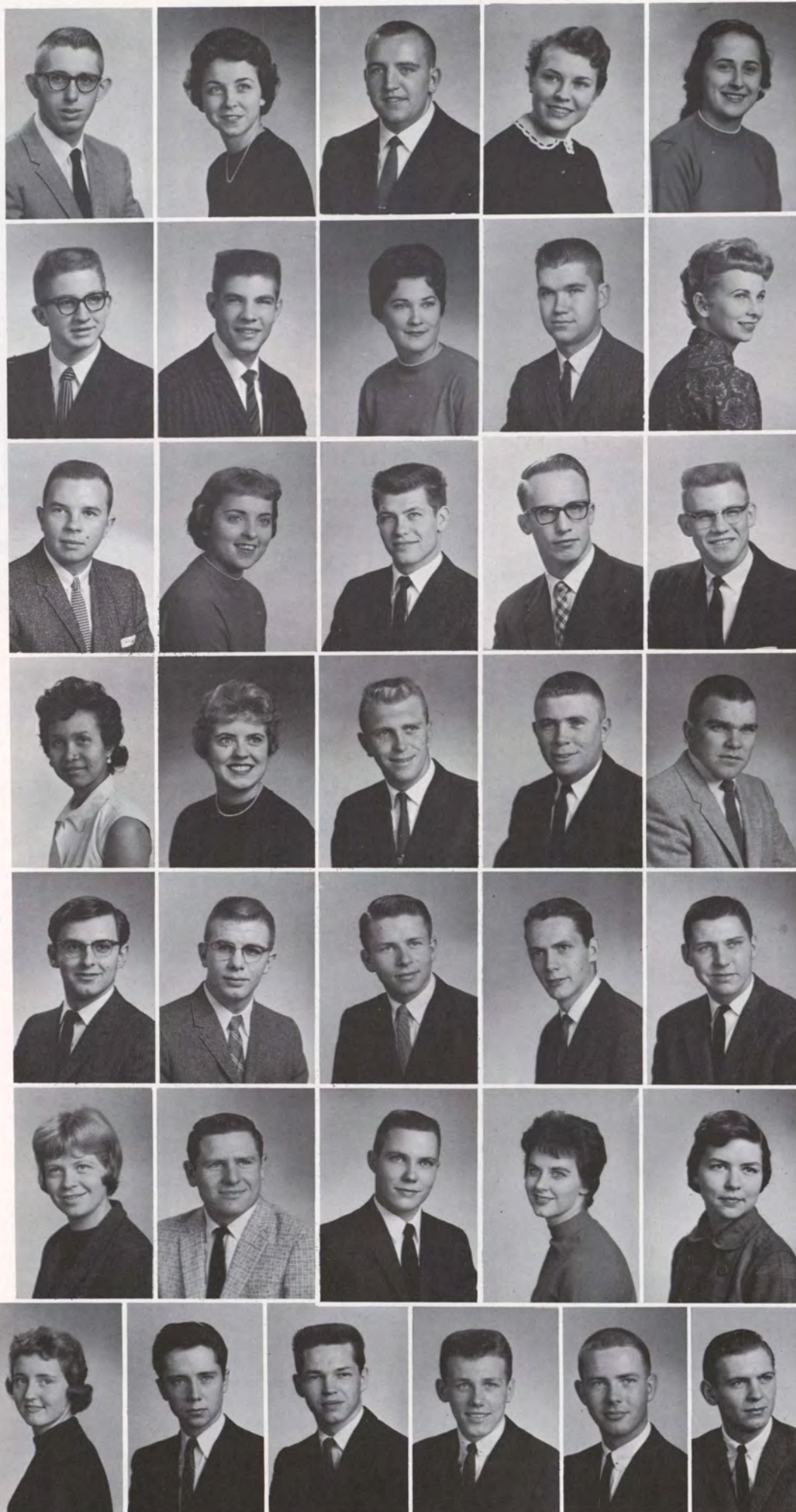
**Wilson, Nathan**  
Rapid City, South Dakota

**Wilson, Richard**  
Ute, Iowa

**Wilson, Tom**  
Buffalo Center, Iowa

**Wolfswinkel, Kenneth**  
Sibley, Iowa

**Wolthuis, Gary**  
Spencer, Iowa





# FRESHMEN



FRESHMAN CLASS OFFICERS. L. TO R., DAVE BONES, VICE-PRESIDENT; DAVE ROGULA, TREASURER; DEANNE MADSEN, SECRETARY; DAVE OTTO, PRESIDENT.



**Abel, Charles**  
Rock Rapids, Iowa

**Ames, Dwight**  
Meriden, Iowa

**Anderson, Bonita**  
Pocahontas, Iowa

**Antonette, Edward**  
Sioux City, Iowa

**Armeanu, Magda**  
Linzdonau, Austria

**Arndt, Ronald**  
Lake View, Iowa

**Arp, Marian**  
Inwood, Iowa

**Artz, Lynda**  
Kingsley, Iowa

**Aunan, Bert**  
Sioux City, Iowa

**Ball, Douglas**  
Jackson, Minnesota

**Bates, Wanda**  
Milford, Iowa

**Bayne, Nancy**  
Sioux City, Iowa

**Bean, Jerry**  
Ottumwa, Iowa

**Benz, Calvin**  
Melvin, Iowa

**Biesemeyer, Christina**  
Renwick, Iowa



**Birdsall, Jerry**  
 Everly, Iowa

**Birdsall, Lynn**  
 Sioux City, Iowa

**Boerner, Diane**  
 Odebolt, Iowa

**Bohlke, Gary**  
 Sioux City, Iowa

**Bones, David**  
 Early, Iowa

**Boyle, James**  
 Sibley, Iowa

**Brent, Cleo**  
 Pocahontas, Iowa

**Brink, Bob**  
 Merrill, Iowa

**Brooker, Marilyn**  
 Cherokee, Iowa

**Brosanle, Thomas**  
 Sioux City, Iowa

**Brown, Douglas**  
 Garner, Iowa

**Brown, Janice**  
 Peterson, Iowa

**Brugman, Ronald**  
 Sioux Rapids, Iowa

**Bryne, Richard**  
 Sioux City, Iowa

**Bundt, Larry**  
 Glidden, Iowa

**Burgeson, Alene**  
 Peterson, Iowa

**Burns, Howard**  
 Chicago, Illinois

**Burns, Sandra**  
 Early, Iowa

**Byrow, William**  
 Danville, Illinois

**Canfield, Judith**  
 Waterloo, Iowa

**Carpenter, Deanna**  
 Canton, South Dakota

**Carpenter, Joseph**  
 Spirit Lake, Iowa

**Casey, Michael**  
 Sioux City, Iowa

**Caughey, Suzanne**  
 Grinnell, Iowa

**Christenson, Dan**  
 Graettinger, Iowa

**Christman, Sandra**  
 Smithland, Iowa

**Chute, Ruth**  
 Sioux City, Iowa

**Collier, Tom**  
 Sioux City, Iowa

**Comfort, Sally**  
 Blencoe, Iowa

**Conner, Sandra**  
 Sioux City, Iowa

**Cowherd, Mayme**  
 Clark, South Dakota

**Crippen, Faith**  
 Des Moines, Iowa

**Cross, Herbert**  
 Northwood, Iowa

**Curry, David**  
 Ponca, Nebraska

**Dawson, Richard**  
 Sioux City, Iowa







**Dean, Phyllis**  
Humboldt, Iowa

**Delfosse, Merle**  
Sioux City, Iowa

**Domke, Edward**  
Sioux City, Iowa

**Donnell, Norma**  
Hinton, Iowa

**Draper, David**  
Stratford, Iowa

**Dunn, Jay**  
Harlan, Iowa

**Egolf, Franklin**  
Peterson, Iowa

**Eickhorn, Laurin**  
Sioux City, Iowa

**Elliot, Dennis**  
Craig, Iowa

**Emerson, Delores**  
Sioux City, Iowa

**Flewelling, Richard**  
Remsen, Iowa

**Fogt, James**  
Reinbeck, Iowa

**Forbes, Lorna**  
Sioux City, Iowa

**Frazier, Beverly**  
Sioux City, Iowa

**Frey, Robert**  
West Union, Iowa

**Fritz, Robert**  
Harlan, Iowa

**Fuhrman, Lorna**  
Cleghorn, Iowa

**Fullerton, Dean**  
Correctionville, Iowa

**Furness, James**  
Allen, Nebraska

**Fymbo, Donald**  
Sioux City, Iowa

**Gimer, Virginia**  
Renwick, Iowa

**Gleason, Norma**  
Audubon, Iowa

**Goodwin, Joyce**  
Rockwell City, Iowa

**Gould, Graham**  
Harlan, Iowa

**Gourley, Robert**  
Sioux Falls, South Dakota

**Guenther, Margaret**  
Britt, Iowa

**Gustafson, Maribel**  
Kiron, Iowa

**Gwinn, Thomas**  
Sioux City, Iowa

**Hall, Warren**  
Hubbard, Nebraska

**Halstrom, Carolyn**  
Meriden, Iowa

**Hansen, Dixie**  
Ruthven, Iowa

**Hansen, Nita**  
Los Angeles, California

**Harris, Larry**  
Kingsley, Iowa

**Harms, Lowell**  
Alta, Iowa

**Harwood, Gerald**  
Sioux City, Iowa





## FRESHMEN

FAMILIAR SCENE. FAMILIAR WEATHER. BUT IT CAME A LITTLE EARLIER THAN EXPECTED THIS YEAR.

**Haugen, Jean**  
Sioux City, Iowa

**Hausmann, David**  
Spirit Lake, Iowa

**Heitritter, Ronald**  
Boyden, Iowa

**Henn, Allen**  
Terril, Iowa

**Henshaw, Barbara**  
Sioux City, Iowa

**Hill, Donald**  
Early, Iowa

**Hinkelday, Richard**  
Sioux City, Iowa

**Hinshaw, Duane**  
Spencer, Iowa

**Hoogeterp, Goldie**  
Sioux City, Iowa

**Houchins, Marcia**  
Sioux City, Iowa

**Howell, Martin**  
Sioux City, Iowa

**Huisenga, Robert**  
Lake View, Iowa

**Huntsinger, Diane**  
Estherville, Iowa

**Hurlocker, Charles**  
Tekamah, Nebraska

**I, Ted**  
Taipei, Formosa

**Jacobson, James**  
Norfolk, Nebraska

**Jensen, Joyce**  
Meriden, Iowa

**Jensen, Lee**  
Homer, Nebraska

**Johnson, Robert C.**  
Sioux City, Iowa

**Johnson, Gary**  
Sioux City, Iowa

**Johnson, Roxane**  
Remsen, Iowa

**Jones, Judith**  
Moorhead, Iowa

**Joransen, Carol**  
Windom, Minnesota

**Jorgenson, Roger**  
Ayrshire, Iowa

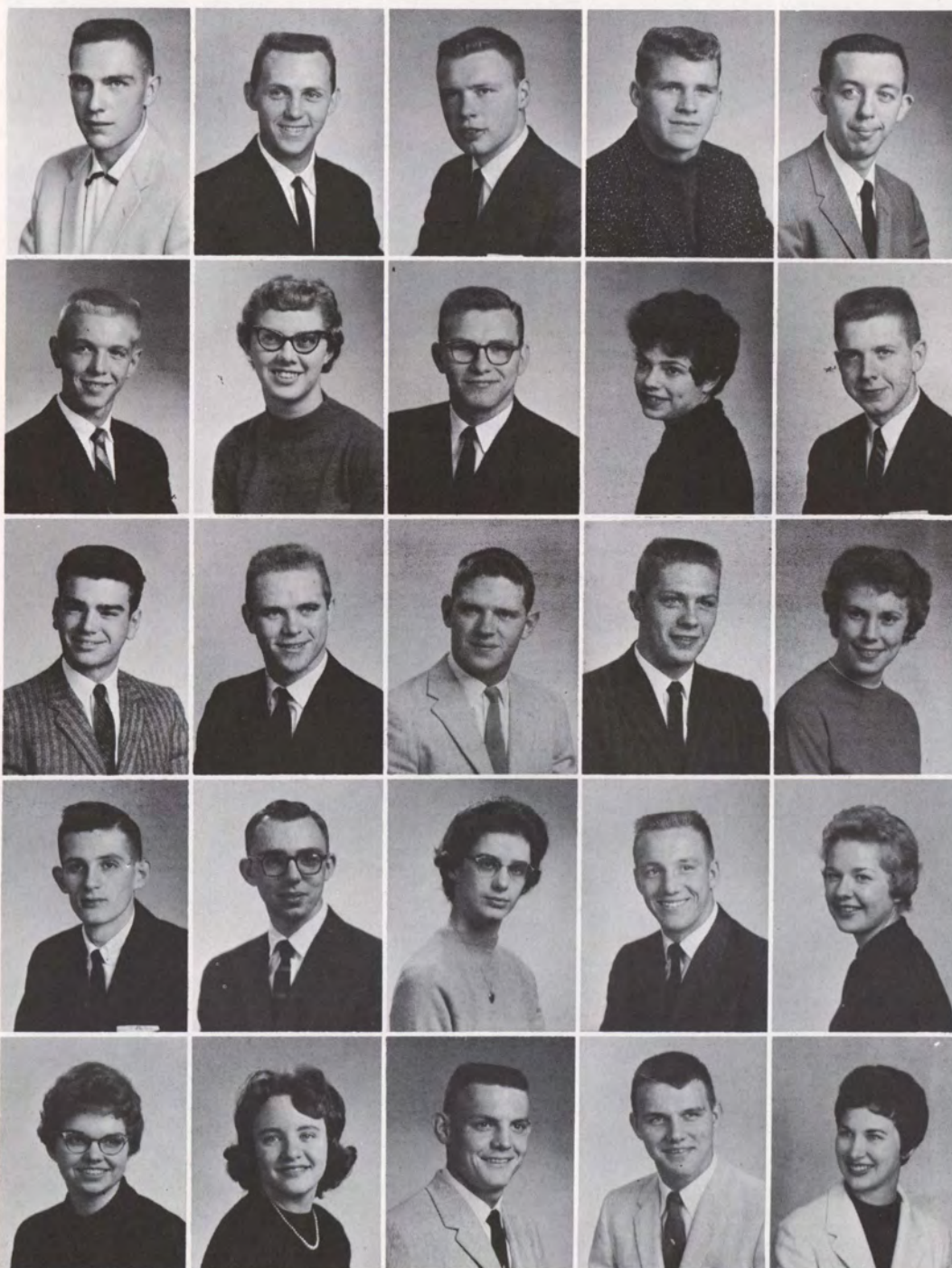
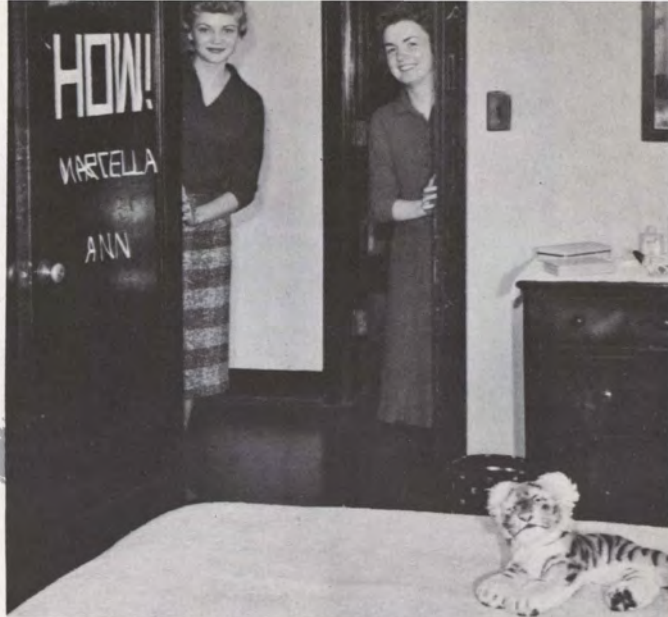
**Jurgens, James**  
Hartley, Iowa





## FRESHMEN

A FEW FURNISHINGS. A LITTLE INGENUITY.  
A SIGN ON THE DOOR. AND A BLEAK DOR-  
MITOROM ROOM BECOMES A HOME.



**Kaufman, Darrel**  
Manson, Iowa

**Kettler, Richard**  
Sioux City, Iowa

**Kilstrom, John**  
Sioux City, Iowa

**Kimbell, Merlyn**  
Allen, Nebraska

**Kirkhalm, Wesley**  
Sioux City, Iowa

**Kirkhart, Arlen**  
Lake View, Iowa

**Klaassen, Arlys**  
Boyden, Iowa

**Kleyweg, Martin**  
Sioux City, Iowa

**Knox, Joni**  
Sioux City, Iowa

**Koerselman, Herbert**  
George, Iowa

**Kreekos, Michael**  
Sioux City, Iowa

**Kuiper, Robert**  
Sibley, Iowa

**Kurth, William**  
Glidden, Iowa

**Lage, Larry**  
Gladbrook, Iowa

**Larson, Barbara**  
Sioux City, Iowa

**Lazaris, John**  
Sioux City, Iowa

**Lemkuil, John**  
Hospers, Iowa

**Lenz, Clara**  
Rolfe, Iowa

**Lichtenberg, Larry**  
Alta, Iowa

**Lidman, Karen**  
Spencer, Iowa

**Lownes, Janice**  
Charter Oak, Iowa

**Luckett, Kay**  
Sioux City, Iowa

**Lundberg, Harold**  
Spirit Lake, Iowa

**Lundquist, Charles**  
Aurelia, Iowa

**Madsen, DeAnne**  
Cleveland Heights, Ohio



**Martin, Robert**  
Sioux City, Iowa

**Mason, Charles**  
Norfolk, Nebraska

**Masters, Larry**  
Graettinger, Iowa

**Matthews, Burlin**  
Webb, Iowa

**Maxwell, Phyllis**  
Kingsley, Iowa

**McComb, Kathy**  
Sioux City, Iowa

**McConnell, Gary**  
Nemaha, Iowa

**McElwain, Charles**  
Dow City, Iowa

**McFarland, Kay**  
Odebolt, Iowa

**McKleroy, William**  
Sioux City, Iowa

**Mead, Geraldine**  
Windom, Minnesota

**Menter, Robert**  
Sioux City, Iowa

**Meyer, Sara**  
Sioux City, Iowa

**Miller, Walter**  
Reinbeck, Iowa

**Mohni, Merold**  
Everly, Iowa

**Nation, Richard**  
Sioux City, Iowa

**Nielsen, Phillip**  
Cleghorn, Iowa

**Niven, Patricia**  
Sioux City, Iowa

**Noble, Joyce**  
Kingsley, Iowa

**Null, Richard**  
LeMars, Iowa

**Nye, Paul**  
Sioux City, Iowa

**Orluske, Phyllis**  
Lakefield, Minnesota

**Otto, David**  
Mapleton, Iowa

**Owen, Jared**  
Reinbeck, Iowa

**Page, Ernest**  
Kingsley, Iowa

**Pals, Daryl**  
Sumner, Iowa

**Pascal, Robert**  
Pocahontas, Iowa

**Patrick, Pamela**  
Mapleton, Iowa

**Pearson, Gary**  
Fostoria, Iowa

**Peter, Lois**  
Danbury, Iowa

**Peters, David**  
Sibley, Iowa

**Peters, Robert**  
Anthon, Iowa

**Petersen, Robert**  
Royal, Iowa

**Peterson, Dennis**  
Gowrie, Iowa

**Peterson, Donald**  
Aurelia, Iowa





## FRESHMEN

HOW TO AVOID THE TEN-MINUTE TELEPHONE  
LIMIT—USE THE PAY PHONE.



**Peterson, Gary**  
Spirit Lake, Iowa

**Pickering, Ann**  
Greenville, Iowa

**Pietens, Bradley**  
Hospers, Iowa

**Plagman, Judy**  
Paullina, Iowa

**Priestman, Fred**  
Sioux City, Iowa

**Puhrmann, Leonard**  
Paullina, Iowa

**Ranard, Eugene**  
Sioux City, Iowa

**Redington, Peter**  
Spirit Lake, Iowa

**Reinke, Sharon**  
Ashton, Iowa

**Riemurma, Lee**  
Hospers, Iowa

**Robinson, Larry**  
Cherokee, Iowa

**Robrock, Marcella**  
New Hampton, Iowa

**Rockwood, Carol**  
Sioux City, Iowa

**Roepke, Lawrence**  
Merville, Iowa

**Rogalla, Gloria**  
Belmond, Iowa

**Rogula, David**  
Fergus Falls, Minnesota

**Rowlands, Marie**  
Sioux City, Iowa

**Rounds, Kathryn**  
Onawa, Iowa

**Sadler, Theola**  
Correctionville, Iowa

**Schumacher, Charlotte**  
Coon Rapids, Iowa

**Schwendemann, Kenneth**  
Livermore, Iowa

**Shaw, Russell**  
Spencer, Iowa

**Shever, Lois**  
Cushing, Iowa

**Simpson, Floyd**  
Estherville, Iowa

**Smith, Evelyn**  
Jackson, Minnesota



WHO PAYS FOR COFFEE? THE  
COINS FLASH THROUGH THE  
AIR. AND THE LUCKY OR  
SKILLFUL ONES ARE TREATED.



**Snave, DeAnn**  
Sioux City, Iowa

**Snow, Roberta**  
Laurens, Iowa

**Soelberg, Stephen**  
Sioux City, Iowa

**Sokol, Sally**  
Sibley, Iowa

**Spaulding, Jane**  
St. Paul, Minnesota

**Spies, James**  
Graettinger, Iowa

**Stief, Mahlon**  
Aurelia, Iowa

**Stieneke, Thomas**  
Washta, Iowa

**Story, Lois**  
Odebolt, Iowa

**Streit, Gary**  
Rolfe, Iowa

**Stribley, Edward**  
Sioux City, Iowa

**Swanson, Linda**  
LuVerne, Iowa

**Takata, Amy**  
Wailuku, Mani, Hawaii

**Tate, Ellen**  
Rossie, Iowa

**Taylor, Donald W.**  
Sanborn, Iowa

**Taylor, Marjorie**  
Sioux City, Iowa

**Taylor, Patricia**  
Bradgate, Iowa

**Thomas, Charles**  
Marathon, Iowa

**Thompson, Joseph**  
Jefferson, Iowa

**Thorpe, Barbara**  
Sioux City, Iowa

**Thorson, Lois**  
Williams, Iowa

**Turnquist, Paul**  
Alta, Iowa

**Van Houten, Allen**  
Rock Rapids, Iowa

**Van Nest, Gene**  
Sheffield, Iowa

**Van Vliet, Stan**  
Sioux City, Iowa





## FRESHMEN

SKITS AND BEANIES ARE A TRADITIONAL PART OF ORIENTATION TO THE CAMPUS.



**Van Wyngarden, Joyce**  
Minneapolis, Minnesota

**Venekamp, Verla**  
Ruthton, Minnesota

**Vestal, Ouida**  
Sioux City, Iowa

**Vine, Diane**  
Cleghorn, Iowa

**Wadhams, Gail**  
Sioux City, Iowa

**Wadsley, Virginia**  
Early, Iowa

**Walter, Iris**  
Lohrville, Iowa

**Waltor, Clayton**  
Sioux City, Iowa

**Ware, Judith**  
Cherokee, Iowa

**Weil, Larry**  
Sioux City, Iowa

**Weisbrod, Pamela**  
Fenton, Iowa

**Weisensee, Jack**  
Sioux City, Iowa

**West, Don**  
Ida Grove, Iowa

**Wiese, Lawrence**  
Schleswig, Iowa

**Wilderman, Richard**  
West Bend, Iowa

**White, Marjorie**  
North Sioux City, South Dakota

**Woestman, Evelyn**  
Sioux City, Iowa

**Worthan, Richard**  
Storm Lake, Iowa

**Wunderlich, Cynthia**  
Bemidji, Minnesota

**Young, Terry**  
Plainview, Nebraska



# Stoitzerei









## WHO'S WHO IN AMERICAN COLLEGES AND UNIVERSITIES



**Al Anderson**

AL EDITED THE COLLEGIAN REPORTER, WAS HOUSE MANAGER OF TAU KAPPA EPSILON, VICE-PRESIDENT OF ALPHA PSI OMEGA AND ACTIVE IN DEBATE AND DISCUSSION.



**Harvey Bartz**

PRESIDENT OF LADS HARVEY HAS BEEN ACTIVE IN THE COMMUNITY AS A STUDENT MINISTERIAL ASSISTANT, PAST PRESIDENT OF KAPPA CHI AND AN HONOR STUDENT.



**Bruce Bedell  
Julia Keys Bedell**

MANY REAL CONTRIBUTIONS TO MC CAME FROM A HUSBAND AND WIFE TEAM. BRUCE WAS PRESIDENT OF BIOLOGY CLUB, WAS ON STUDENT COUNCIL AND AN HONOR STUDENT. JULIA WAS VEEP OF BOTH LASS AND MU PHI AND ACTIVE IN MANY MUSICAL GROUPS.



**Dave Bircher**

DAVE WAS PRESIDENT OF PHI MU, MEMBER OF THE SYMPHONY, AND ACTIVE IN ORCHESTRA GROUPS.



**Karen Carey**

BUSY WITH JOURNALISM ON THE C. R. AND EDITOR OF THE DAILY BULLETIN, PLUS SECRETARY TO AGORA IS KAREN.

**Fred Evans**

EDITOR OF THE SIOUX, FRED WAS A VETERAN OFFICER OF SIGMA PHI EPSILON AND OFTEN FOUND IN THE ART DEPARTMENT.



**Diana Burg**

DIANA WAS PAST PRESIDENT OF LASS, VICE-PRESIDENT OF DELTA ZETA AND WAS SORORITY REPRESENTATIVE FOR STUDENT COUNCIL AND GREEK COUNCIL.





## WHO'S WHO



**Bob Hammer**

BOB WAS PRESIDENT OF CIRCLE K, AND HIS FROSH AND JUNIOR CLASS, AND VEEP OF SOPHOMORE CLASS AND AN HONOR STUDENT.



**Phyllis Mackintosh Killam**

PRESIDENT OF ALPHA KAPPA DELTA, PHYLLIS WAS SECRETARY TO HER SOPHOMORE AND JUNIOR CLASS.



**Kathy Majorowicz**

PRESIDENT OF LASS, KATHY ALSO FOUND TIME FOR HOME EC. PRESIDENT AND SECRETARY TO THE OFFICE OF RELIGION.



**Carole Van Wyngarden Oleson**

CAROLE SERVED WELL AS CHAIRMAN OF RELIGIOUS EMPHASIS WEEK, WAS PAST PRESIDENT OF PI KAPPA DELTA, TREASURER OF LASS AND HONOR STUDENT.



**Christy Mathiasen**

CHRISTY WAS PRESIDENT OF THE BUSINESS WOMEN'S CLUB, SECRETARY TO STUDENT COUNCIL AND REGIONAL I. S. E. A.



**Bill Ridout**

ACTIVE IN DORM ACTIVITIES AND ITS PAST PRESIDENT IS BILL WHO ALSO FOUND TIME FOR STUDENT COUNCIL, BETA BETA BETA AND VEEP OF CIRCLE K.



**Connie Peterson**

MUSICALLY MINDED, CONNIE WAS SECRETARY TO MU PHI, IN BAND AND CHOIR, AND WAS IN ALPHA LAMBDA DELTA AND SECRETARY TO LASS.



**Harold Poppen**

HAROLD SERVED AS VICE-PRESIDENT OF SENIOR CLASS, SIG EP, AND CIRCLE K, WORKING STUDENT COUNCIL, BASEBALL AND M CLUB INTO THE BUSY SCHEDULE.





**Terry Roberts**

PRESIDENT OF STUDENT COUNCIL. TERRY IS A FOOTBALL LETTERMAN AND PAST VEEP OF MEN'S DORM, SOPH. PRESIDENT, AND M CLUB MAN.

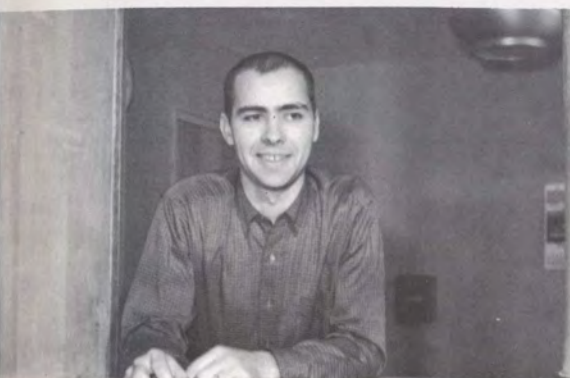


**Mary Sievert**

PRESIDENT OF SIGMA KAPPA AND PAN-HELL, MARY WAS IN DEBATE, PLAY CASTS, AND AM. CHEMICAL SOCIETY.

**Ron Stone**

RON WAS PRESIDENT OF M.C.F., MANAGING EDITOR OF THE C.R., VEEP OF BOTH INTERNATIONAL RELATIONS CLUB AND IOWA MSM, TREASURER OF STUDENT COUNCIL AND HONOR STUDENT.



**Chuck Wilmarth**

VEEP OF LADS, FROSH DIRECTOR OF COUNCIL, OUTSTANDING BIOLOGY STUDENT AND LEADS IN DRAMA PRESENTATIONS WERE SOME OF CHUCK'S RESPONSIBILITIES.

**Rosalee Jacobson Sprout**

A FAMILIAR FACE IN MORNING-SIDE DRAMA, ROSALEE WAS SENIOR PRESIDENT, AND TWICE COMMITTEE CHAIRMAN DURING R. E. W., PAST EDITOR OF C. R. AND HONOR STUDENT.

**Linde Wohlenberg**

LINDE WAS PRESIDENT OF DIMMITT HALL, ACTIVE IN ALL MUSIC GROUPS AND LASS HISTORIAN.



**Wally Spiegel**

PAST VICE-PRESIDENT OF TKE, KAPPA CHI, AND HIS JUNIOR CLASS WALLY MADE HIMSELF USEFUL IN DRAMA, STUDENT COUNCIL, SIGMA TAU DELTA AND ALPHA PSI OMEGA AND LADS.





## LASS

Leadership  
Ability  
Scholarship  
Service



OFFICERS: KATHY MAJOROWICZ, PRESIDENT; CHRISTY MATHIASSEN, MEMBERSHIP CHAIRMAN; LINDE WOHLBERG, HISTORIAN; CAROL OLESON, TREASURER; JULIA BEDELL, VICE-PRESIDENT; CONNIE PETERSON, SECRETARY.

LASS was organized to honor senior women who have achieved a certain grade point and have shown interest in Morningside College. LASS promotes different worthwhile projects throughout the year; the main project is the planning of the spring Honor's Chapel.



THEY SENT TELEGRAPH MESSAGES, SOMETIMES IN GREEK, AT THEIR CARNIVAL BOOTH.

FRONT ROW: DIANA BURG, ADVISORS MRS. HOLMES, MRS. SELLEN, MRS. PHELPS, LINDE WOHLBERG. BACK ROW: CHRISTY MATHIASSEN, PHYLLIS MACKINTOSH KILLIAM, JULIA KEYS BEDELL, ROSALIE JACOBSON SPROUT, CAROLE VAN WYNGARDEN OLESON, KATHY MAJOROWICZ, CONNIE PETERSON.





## LADS SOCIETY

Leadership  
Achievement  
Dedication to Service  
Scholarship



AFTER USHERING FOR MID-YEAR GRADUATION THE MEN WERE IN FULL GARB FOR A PICTURE. DAVID BIRCHER, HARVEY BARTZ, BOB HAMMER, BRUCE BEDELL, CHARLES WILMARTH, RON STONE, HAROLD POPPEN, TERRY ROBERTS, WALLACE SPIEGEL.

The Lads Society is an honorary fraternity formed last year for senior men who have attained positions of leadership, high scholastic standing, and have demonstrated high character in their activities on campus. To be eligible for membership, a student must rank scholastically in the upper 35 per cent of the male students and have attained special distinction in at least one major organization and several minor areas; the purpose being to honor students with well-rounded interests.

Lads strive to provide an organization in which the campus leaders can meet to co-ordinate their activities so all groups on campus can be working toward unified goals.

Projects which the Lads have conducted are the leadership workshops, held each year at the Old Barn in LeMars, and assisting the student council with the orientation of mid-year freshmen students.

The group is studying the possibilities of affiliation with a national honor fraternity. Considerations were made for Omicron Delta Kappa and Blue Key.



OFFICERS: BOB HAMMER, TREASURER; CHUCK WILMARTH, VICE-PRESIDENT; WALLY SPIEGEL, MEMBERSHIP CHAIRMAN; DEAN GREIGG, ADVISOR. MISSING IS PRESIDENT HARVEY BARTZ.





FRONT ROW: MARY JANE CARNES, ROSALEE J. SPROUT, LOUISE SIMMON, ANNETTE KNUDSON, ALICE JORDAN, DIANE BUSHYAGER, JANET CLINE.

2ND ROW: JOANNE SCHNELL, LORRAINE McMANIS, CHRISTY MATHIASSEN, BONNIE STUBBLEFIELD, NADINE WEST, VIRGINIA BAILEY, CONNIE PETERSON.

## ALPHA LAMBDA DELTA

The honorary scholastic sorority for freshmen women was installed at Morningside in 1958.

FRESHMEN MEMBERS: RUTH CHUTE, OUIDA VESTAL, BONNIE ANDERSON, SALLY COMFORT, VERLA VENEKAMP, BARBARA LUND, BARBARA DUNHAM, DIANE BOERNER, JOYCE JENSEN, MARIE ROWLANDS, JUDY WARE WILSON, LOIS THORSON, EVELYN WESTMAN.







## KAPPA CHI

Morningside Kappa Chi fellowship is the Delta chapter of the national organization of college men and women seeking full-time Christian service.

THE EXECUTIVE COUNCIL OF KAPPA CHI PLANS THE OVER-ALL PROGRAM AND SEEKS TO MAKE AND KEEP A DYNAMIC RELIGIOUS ORGANIZATION. WARREN CONNOR, FERN FINERAN, DR. GINGERICH, DAVE OTTO, ANN BURGESSON.



REGULAR MONTHLY MEETINGS INCLUDED SPECIAL SPEAKERS FROM AREA CHURCHES. GROUP PLANNING WAS NECESSARY FOR THEIR ANNUAL PROGRAM FOR WALL STREET MISSION CLUBS.



THE DEPUTATION TEAM IS KNOWN THROUGHOUT FOUR STATES.



CAMPUS ACTIVITIES AND CHAPEL ARE PLANNED BY SEPARATE COMMITTEES.



## AGORA

Agora board members: Kay Conover, Louise Simmon, Diane Bushyager, Mary Ehrhardt, Bonnie Anderson, Karen Rodger, Carol Higgins, Jeanine Arnold, Sandra Burns, Mary Louise Lundquist, Karen Carey, Donna Pettitt. Under president Kay Conover, the board successfully planned big-and-little-sister activities, the leadership banquet, the Agora Carnival, and the Mother-Daughter banquet. Regular meetings included a Christmas party for children for the Boys and Girls Home and a bridal show.



AGORA MEMBERS HEARD OF OPPORTUNITIES FOR WOMEN COLLEGE GRADUATES IN THE ARMED FORCES.





MOTHERS ARE THE HONORED GUESTS AT THE ANNUAL MOTHER-DAUGHTER BANQUET.

MRS. HUGH WOHLBERG WAS SELECTED MOTHER OF THE YEAR.

## AGORA ACTIVITIES



AN IMPORTANT PART OF GETTING ACQUAINTED FOR FRESH-MEN GIRLS WAS THE BIG AND LITTLE SISTER PICNIC.

CHILDREN FROM THE BOYS AND GIRLS HOME GATHERED ROUND WITH AGORA MEMBERS FOR A CHRISTMAS CAROL.





## STUDENT COUNCIL

One of the most important and the most active groups on campus is the Student Council. Its many actions are felt throughout the year in both academic and social fields.

One of the main academic projects this year was sponsorship of the honor system election. Along with the traditional activities for Homecoming, the Christmas formal, the Spring formal, and the Campus Chest drive, a special series of entertainment was sponsored during the winter months. Three signs to advertise Morningside College were leased by the Council and were placed along major highways.

When spring fever was about to get the best of all of us, the familiar bugle hailed Walk-Out Day, the completion of another successful year, and the election of a new council.



TERRY APPROVES ONE SIGN ADVERTISING MORNINGSIDE COLLEGE

SEATED: MATHIASSEN, CARLSON, MRS. CLARKSON, CREWDSON.

STANDING: CROSTON, POPPEN, RIDOUT, ROBERTS, SPIEGEL, WILMARTH, FICK, KELLOG.



President	Terry Roberts
Vice-President	Arlan Fick
Secretary	Christy Mathiasen
Treasurer	Lowell Wilson
Program and Activities	Bill Ridout
Freshman Director	Chuck Wilmarth
Publicity	Annette Knudson
Advocate	Craig Croston
Social Director	Harold Poppen
Interfraternity Representative	Wally Spiegel
Panhellenic Representative	Peg Crewdson
I. S. E. Representatives	Tom Kellog, Kay Carlson
Advisor	Robert Meloy





## WOMEN'S SELF-GOVERNING ASSOCIATION

PRESIDENT, LINDE WOHLNBURG; VICE-PRESIDENT, JEAN-INE ARNOLD; SECRETARY, SONJA GOETSCH; TREASURER, CHARLENE WILMARTH; CHAPLAIN, NANCY DROMMER; SOCIAL DIRECTORS, NORMA ZIMMER AND MARY EHRHARDT.

Members of the Men's Dorm Council are elected by the dorm residents to plan dorm activities. They initiated the homecoming display, a Christmas formal, and open house in the dorm. The Council president also presides over dorm business meetings.

## MEN'S DORMITORY OFFICERS

FOLLOWING PRESIDENT LOREN ANDREWS IN THIS POSE ARE: DON TAYLOR, MERLYN KIMBELL, DAVE OTTO, JERRY STRUCK, DUANE HINSHAW, TED I. MISSING: STEVE POHLMAN.







THE OFFICERS: WALLY DELZELL, PRESIDENT; JOANNE SCHNELL, SECRETARY; BETTY MADSEN, HEAD OF FOOD COMMITTEE; CHRISTY MATHIASSEN, REGIONAL ISEA SECRETARY; DON TAYLOR, VICE-PRESIDENT AND PUBLICITY CHAIRMAN.

The Student I.S.E.A. is open to all future teachers. Of the five meetings held this year at the Dimmitt Hall lounge, each of them attempted to broaden the outlook of prospective teachers soon to enter the profession. The programs varied from a panel of students: Bill Frederick, Amy Takata, and Ted I, to guest speakers: Mr. Vittal, Dr. Benjamin, and Mr. Paul Clark, Principal of a city junior high school. In April, they played hosts to the Regional meeting of the Student I.S.E.A. A day was spent interchanging ideas of current trends in education. A picnic in May rounded out the year's activities.

HOSTS WALLY DELZELL AND MARY LOUISE LUNDQUIST REGISTER STUDENT ISEA MEMBERS AT THE REGIONAL CONVENTION HERE.



PROFESSOR VITTAL SPOKE TO THE OPENING SESSION ON EDUCATION CONDITIONS IN HIS HOME LAND, INDIA.



## SOCIOLOGY CLUB

The Sociology Club was organized because of the interest of several students in the field of social work.

One of the primary purposes of the club is to promote more interest in social work.

The programs are designed by student interest and involve student participation.

Officers:

President...Chuck Abel

Vice-President  
-----Nita Hansen

Secretary-Treas.  
-----Lorna Forbes



## SIGMA TAU DELTA

This honorary English fraternity particularly stresses creative literary activity. Listening to Advisor Dr. William Palmer are members: Virginia Bailey, Joanne Schnell, Carole Oleson, Karen Carey, Rosalee Sprout, Harvey Bartz, and Wally Spiegel.





# MORNINGSIDE CHRISTIAN FELLOWSHIP



BOB HARTMAN, PRESIDENT; LORNA FORBES, SECRETARY; STEVE POHLMAN, OUTREACH; MARILYN HIGGINS, VICE-PRESIDENT; JOEL PATRICK, TREASURER.

TO MEET THE RELIGIOUS NEEDS OF MORE STUDENTS ON CAMPUS, THE METHODIST STUDENT MOVEMENT WAS BROADENED IN 1958 TO THE MCF.

WITH THE GOAL OF CHRISTIAN WITNESS AND SERVICE, MCF SPONSORED RETREATS, RELIGIOUS EMPHASIS WEEK COMMITTEES, AND NIGHTLY VISITS TO THE BOYS AND GIRLS HOME.

MCF SENT A LARGE DELEGATION TO THE STATE METHODIST STUDENT MOVEMENT MIDWINTER RETREAT.





## LUTHERAN STUDENT ASSOCIATION



FRONT ROW: AL SEYMORE, NADINE WEST, MARV ESSING, RON RIEKMANN. SECOND ROW: DARRELL KAUFMAN, GARY ANDERSON, LARRY ROBINSON.

Meeting the religious needs of Lutheran students on campus, L. S. A. is a national organization brought to Morningside in 1956. Besides its regular meetings, the organization helped sponsor an all-college religious retreat.



## COSMOPOLITAN CLUB

Promotion of friendship among students from other countries is the goal of the Cosmopolitan Club. Foreign students find orientation to college and the American way of life in the club. An informal supper introduced them to the favorite foods from each other's homeland. A special week-end in Des Moines introduced them to off-shore students from all over the state.

FIRST ROW: JOANNE VOLGA, GUENTHER OSTENDORF, PROFESSOR NELSON, JOHN BRUMAS, MARYSOL GUARDIA. SECOND ROW: TED I, BARBARA LUND, NEREYDA TORRES, AMY TAKATA, LEILANI FEDALIZO, JANE SPAULDING, CARLOS ESCALA.



## BUSINESS WOMEN'S ORGANIZATION

The Business Women's Organization is newly formed this year. Its purpose is to improve the background of girls in business. This spring they will affiliate with Phi Chi Theta, national business sorority.



FRONT ROW: BETTY STUBBLEFIELD, CHRISTY MATHIASSEN, BONNIE STUBBLEFIELD, SHARDELL SULSBERGER. SECOND ROW: NADINE WEST, JOAN ROLFS, CAROL PATTON, KAREN BOHN, CAROL BONINE. THIRD ROW: BONNIE BLACKMER, ROSEMARY JONES, WINOLA ZWALD, PHYLLIS MAXWELL.

## ACADEMIC INVESTMENT ASSOCIATION

The Academic Investment Association was organized in 1955 by students majoring in Business Administration. The goal of A. I. A. is to realize a profit through business transaction of buying and selling securities. A. I. A. has grown from a small group with initial investment of \$28 to 49 members and an investment of \$2432.

### OFFICERS:

President	-----	Lee Jarvis
Vice-President	-----	Jud Garwood
Secretary	-----	Clyde Krause
Treasurer	-----	Carl Roth
Reporter	-----	Chuck McElwain
Advisor	-----	Laurel Pease





## PSI CHI

Psi Chi is a national honorary society in psychology. The Morningside chapter first received her charter on June 5, 1939 and was re-activated this spring. Requirements for membership are either a minor or major in psychology; upper one third of psychology class, and upper one half academically.

Officers for the group are: Leo Ogden, president; Ron Stone, vice-president; and Roberta Cobain, secretary-treasurer. Dr. Lyle K. Henry is faculty advisor.



LEO OGDEN, NANCIE ENSOR, CHUCK ABEL, DEVERE FREEMAN, RON STONE, DIANA BURG.  
NOT PICTURED: ROBERTA COBAIN.

## ALPHA KAPPA DELTA

Alpha Kappa Delta, a national honorary sociology society, was granted a charter at Morningside in 1926. Morningside was the first chapter in Iowa. This year the society celebrated its 40th anniversary.

Sunday, April 24, Diana Burg, Louise Simmon, Janet Cline, Mary Jane Carnes, Barbara McLarty, and Jack Southwick were initiated into this organization.

The advisor for this group is Mr. Johnson.







BEVERLY CASPERSON, GERI MEAD, ANN LENZ, KATHY ROUNDS, CAROL HIGGINS, JANA DODGE, BONNIE BLACKMER, KATHIE MAJOROWICZ, SALLY NIEBUHR, LOIS THORSEN, MARGARET GUENTHER, MARILYN HIGGINS.

## CHEERLEADERS AND MAROON CHIEF



Eight enthusiastic cheerleaders added a Maroon Chief to generate spirit at Morningside football and basketball games.

THE SQUAD:  
DIANE BUSHYAGER  
DARLA PETERSON  
KAY CARLSON  
JEAN WILSON  
KAROL DEMOSS  
MARY MOSSENGREN  
KAREN RODGER  
CHIEF STEVE  
POHLMAN.  
MISSING IS  
NANCY BIRKBECK.



## WOMEN'S ATHLETIC ASSOCIATION

The W.A.A. was formed for all campus women to participate in all phases of phys. ed. The group held monthly meetings with swimming, trampoline, ping pong, basketball and other forms of recreation as activities. Miss Nita Harris is W. A. A. director.



MEMBERS OF THE CITY RECREATION LEAGUE BASKETBALL TEAM: FRONT ROW: BARBARA DUNHAM, JOYCE JENSEN, PAT TAYLOR. BACK ROW: CAROLYN HALSTROM, SHARON REINKE, LYNDY ARTZ, LOIS PETER, PHYLLIS ORLUSKE. LYNDY WAS ALSO COACH.

## M CLUB



ATHLETIC LETTER WINNERS: FRONT ROW: JERRY HOUP, JERRY ADAMS, ELMER MENAGE, LOWELL THOMSEN. SECOND ROW: JACK JENNETT, JERRY EHWEGER, MIKE WATKINS. THIRD ROW: GARY KOLBECK, JIM ANFINSON, LERAY CARTER, HAROLD POPPEN. FOURTH ROW: JERRY BLOCK, DAVE MULDER, KEN GOECKE, DICK SLATER. TOP ROW: DALE TRAVER, DARYL KOHNKE, DOUG JOHNSON.



## CIRCLE K



FRONT ROW: DEWEY HALFORD; ADVISOR, CLOYD BISHOP, BILL RIDOUT, JIM PARDEN. 2ND ROW: DICK HEATER, FRED EVANS, STEVE POHLMAN. 3RD ROW: DON TAYLOR, LOREN ANDREWS, ARLAN FICK. 4TH ROW: DAVE MULDER, JERRY STRUCK, HAROLD POPPEN, AND DICK SLATER.

OFFICERS: DICK SLATER, PRESIDENT; CHUCK WILMARTH, VICE-PRESIDENT; ARLAN FICK, SECRETARY; HAROLD POPPEN, TREASURER.

Circle K is a Kiwanis service organization on the college level. Projects for the club's second year ranged from a slave sale to handing out donuts and cocoa at a pep rally. Two highlights of the activities were a Thanksgiving dinner with boys from the Boys and Girls Home and a traditional ladies' night banquet.

The men meet each Monday noon, with regular guest speakers.



THE BOYS FROM THE HOME, AND THOSE FROM MORNINGSID, ENJOYED THANKSGIVING DINNER.



CHAIRMAN TOM KELLOGG PRESIDES OVER A COMMITTEE MEETING.

I. S. E. was organized three years ago by veterans on campus. It was later broadened to include any student who is not a member of a fraternal organization. I. S. E. is purposely loosely organized to meet the needs of students who do not have time for organizations. Two delegates to the student council share one vote.

Chairman, Tom Kellogg; Vice-Chairman, Don Taylor; Treasurer, Christy Mathiason; Secretary, Karol DeMoss; Publicity, Jerry Vaughan.



# Fine Arts









## BRASS ENSEMBLE



The Brass Ensemble, under the direction of James Hustis, presented a concert on February 28 this year, and on May 4, played for Honors Chapel in Allee Gym.

## MADRIGAL



The madrigal group under the direction of Dr. Morrison gave a folk song concert for high schools in the area. Many of their selections were Dr. Morrison's original works.



## MARCHING BAND



THOUGH SMALL IN SIZE, THE SPIRITED MARCHING BAND OF 40 RING WITH A SYMPHONIC AIR.



HIGH-STEPPING DRUM MAJOR ROD JISKOOT LEADS THE PEPPY MAJORETTES, MARJORIE HANSEN, BARBARA HENSHAW, THEOLA SADLER, JUDY CANFIELD, AND BAND THROUGH HALF-TIME MANUEVERS.



PROF. JAMES HUSTIS DIRECTED BOTH BANDS THIS YEAR,





## CONCERT BAND



### Piccolo

Sharon Swanson

### Flute

Gloria Rogalla  
Sharon Swanson  
Jinny Sloan

### Bassoon

Ronald W. Tyree (Faculty)  
Ronald Rieckmann

### Clarinet

Bruce Bedell  
Nancy Drommer  
Roger Neumann  
Virginia Wadsley  
Gary King  
Don Horner  
Gary Ritz

### Alto Sax

David Hausmann  
Joyce Myrick

### Horn

David Bircher (President)  
Katherine Rasmussen  
Marlys Cross

### Trombone

Larry Bundt  
Jack L. Warner  
Millie Wharton  
Tad Gould

### Baritone

Rodney Jiskoot (Vice-Pres.)  
Don Taylor  
James Puckett

### Sousaphone

James McDonald  
William Anderson

### String Bass

John Peterson

### Tenor Sax

Bob Kuiper

### Trumpet

William Castle  
Ken Wolfswinkel  
Gary Easton  
William Smithson  
Ronald Arndt  
H. Leroy Koerselman  
G. Richard Van Nest  
Lee Riemersma

### Timpani

Russ Shaw

### Percussion

Sue Anne Oleson  
Robert Peters  
Nathan Wilson

### Librarian

Nancy Drommer

## Band Officers







FRONT ROW: SUE OLESON, BARBARA TUTTLE, SHARON KRUGER, JULIA BEDELL, ELAINE ARVESON, KAREN BOHN. 2ND ROW: KAY GESAMAN, ARLENE LENZ, CAROL GUTHMILLER, JUDY HAAS, MARILYN SOMMERS. 3RD ROW: KAY PECH, KATHY RASMUSSEN, MARLYS CROSS, JEANINE ARNOLD, NANCY DROMMER, CAROL NICKEL, CONNIE PETERSON.

## MU PHI EPSILON

Officers:  
 President ----- Carol Nickel  
 Vice-President ----- Julia Bedell  
 Treasurer ----- Marlys Cross  
 Secretary ----- Connie Peterson



Mu Phi Epsilon is a national music sorority with emphasis on service to the world and the community through music. Attainment of membership in Mu Phi is quite an honor, since it depends on accomplishments in three areas: leadership, scholarship, and musicianship.





## PHI MU ALPHA SINFONIA



FRONT ROW: BILL SMITHSON, GARY EASTON, RICK LEHNUS, GARY RITZ, DAN WOLFF, DAVE BIRCHER, LARRY BUNDT, ROD ARNDT, RUSS SHAW. SECOND ROW: JAMES PUCKETT, RON RIECKMANN, LEONARD BURCHER, ROGER NEWMAN, NATHAN WILSON, JACK WARNER, JIM JERGENS, KEN WOLFSWINKEL. THIRD ROW: GENE VAN NESS, BILL VENNARD, JOHN JOHNSON, JIM McDONALD, ROD JISKOOT, JERRY HOUP, BILL CASTLE, DAVE ROGULA.

Morningside's big band, the Sinfonian, is the product of the combined talents of the members of Phi Mu Alpha. The high point of the honorary music fraternity's calendar is Sinfonian Inn. Roger Newman was dance band leader. Wade Raridon directed a chorus made up of all the members.

Sinfonian Inn was preceded by a traditional Phi Mu banquet.

### Officers:

President \_\_\_\_\_ David Bircher  
 Vice-President \_\_\_\_\_ Bill Smithson  
 Secretary \_\_\_\_\_ Bill Castle  
 Treasurer \_\_\_\_\_ John Johnson  
 Faculty Advisor \_\_\_\_\_ Dr. Morrison





## CHOIR

The choir, chamber orchestra, and music faculty combined talents to sing Haydn's "The Heavens Are Telling" at mid-year graduation.



DR. WOOD AT WORK.



CHOIR MEMBERS TOOK TIME OUT DURING THE CHOIR'S FOUR-STATE TOUR.

FIRST ROW: DR. WOOD, JUDY JONES, BONNIE ANDERSON, BECKY HOPE, GLORIA ROGALLA, BOB KUIPER, AL BARTELS, GENE VAN NESS, BEVERLY NEAL, SHARON KRUGER. SECOND ROW: DIANE SPIEGEL, MARILYN SOMMERS, BERLIN MATHEWS, ROGER NEWMANN, JIM McDONALD, KEN WOLF, JACK COLBY, RUTH ANN WESTMAN, KATHY RASMUSSEN, MILLIE WHARTON. THIRD ROW: ELAINE ARVESON, JUDY HAAS, SANDY BURNS, HERB KORSELMAN, RUSSELL LAWSON, LARRY BUNDT, JOHN LEASE, CAROL ROCKWELL, KAY MCFARLAND, LINDY WOHLBERG, SUE ANN OLESON, JOHN PETERSON, AL BASKERVILLE, BILL HAMPEL, DAVE HAUSMANN, LEE REIMERSMA, BARBARA DUNHAM, JOYCE JENSEN, CONNIE PETERSON.





## SIOUX CITY SYMPHONY ORCHESTRA



The Sioux City Symphony orchestra presented five concerts this year at the auditorium. By using activity tickets all students could attend. The group also presented twelve other concerts specifically for the Sioux City public schools; four of these were broadcasted on radio. Sixteen students and six faculty members perform in the symphony.



THE CONDUCTOR IS  
LEO KUCINSKI.



ONE HIGHLIGHT OF THE  
YEAR'S SERIES WAS THE  
GUEST PERFORMANCE OF  
PROF. RICHARD FAITH.



## MASTER'S MELODIERS

The Ambassadors of Morningside . . . The Masters Melodiers vocal group sing at church services and youth groups in Iowa, Nebraska, and Minnesota and at church groups in the summer. The men are sponsored by the college.



JIM McDONALD, AL BASKERVILLE,  
BOB BELL, GENE VAN NEST, KEN  
WOLFSWINKEL.



GASPARO TELLS BEPPPO THAT A  
MAN SHOULD BE THE BOSS.

Donizetti's comic opera Rita, directed by Mr. Raridon, starred Becky Hope as Rita, John Lease was her husband Beppo, and Al Bartels was her first husband Gasparo. A surprise addition to the cast was Dr. Morrison, playing Bartolo, the Inn servant.

Gasparo, who Rita had thought to be dead, returns home to Rita, now married to Beppo. Discontented, both men want to be rid of her. They decide to make a game of it; the winner is the loser . . . or the winner takes Rita.

## RITA

GASPARO IS DETERMINED TO GET  
THE WEDDING LICENSE AND DE-  
STROY IT.







A STIRRING PROGRAM OF FOLK MUSIC WAS PRESENTED IN FEBRUARY BY THE MADRIGAL SINGERS.

## MUSIC ACTIVITIES



RECITALS AND OTHER MUSIC ACTIVITIES REQUIRE MANY HOURS OF PRACTICE. ABOVE KAY PECH USES HARP TECHNIQUE OF TEACHER BEVERLY NEAL. SENIOR RECITALS ARE REQUIRED. AT RIGHT HORNIST DAVID BIRCHER GOES OVER HIS PIECES FOR HIS JOINT RECITAL WITH MARLYS CROSS.



BUT THERE WAS ALWAYS TIME TO RELAX.



## SIoux

Social events sometimes mean little more than pictures on a yearbook page to Sioux staff members when deadlines are close. But when the last pages go to the printer, the job seems worth it.



EDITOR, FRED EVANS, DISCUSSES FINAL ARRANGEMENTS OF HIS COVER DESIGN WITH ASSOCIATE EDITOR VIRGINIA BAILEY.



A HOT HAND OF BRIDGE CLIMAXED AN EVENING WITH PRESIDENT AND MRS. PALMER SHARED BY MEMBERS OF THE STAFF AND STUDENT COUNCIL.



PICTURES... WE CAN'T GET ENOUGH OF THEM. EXPEDITOR OF PHOTOS, DIANE SPIEGEL, ASSURES SPORTS, CONNIE RHOADES, ON HER REQUEST FOR MORE FOOTBALL SHOTS. LOOKING ON IS FACULTY ADVISOR FOR BOTH SIoux AND COLLEGIAN REPORTER, ROBERT PHELPS.



TIME OUT BETWEEN PICTURES FOR THEIR OWN: THE STAFF... NANCY CHRISTENSON, ALICE JORDAN, JIM McDONALD, BILL BURGRAAF, NANCIE ENSOR.



## COLLEGIAN REPORTER



AL AND MARILYN BEGIN THE REGULAR RITUAL OF CHECKING PROOFS FOR THE FRIDAY ISSUE.



A TYPICAL WEDNESDAY . . . LAY-UPS. JANE ASSISTS SPORTS EDITOR CONNIE AND HER ASSISTANT, DICK, ON PAGE THREE SPORTS.

Editor	Al Anderson
Managing Editor	Marilyn Gauger
Business Manager	Wally Delzell
Sports Editor	Connie Rhoades
Artist	Frank Lange
Photographer	John Keshishoglou
Circulation	Florence Dirks
Fine Arts	Bill Frederick
Religion	Kathie Young
Activities	Barbara McCutcheon
Organizations	Karen Carey
Re-Writing	Diana Burg
Lay-Up	Judy Plagman

Staff: Lorna Puhrman, Alice Jordan, Myrna Hinton, Sandra Burns, Dick Anderson, Dan Wolff, Janna Dodge, Charles McElwain, Henry Givens, Julia Bedell, Frank Lelchhook, Rosalee Sprout, Virginia Bailey, Jane Spaulding, Virginia Wadsley.

## STAFF

THE C. R. STAFF  
FREDRICH, LELCHOOK,  
MCCUTCHEON, RHOADES,  
GIVENS, CAREY, SPAULD-  
ING, ANDERSON, KESH-  
ISHOGLU.





## PERSPECTIVES

Members of the class, aided by adviser, Dr. William Palmer, chose the best of the students' literary efforts to go into print. Gary Gessamen was business manager.

DAN LUNDY SERVED AS EDITOR FOR THE 1960 PERSPECTIVES.



PERSPECTIVES, MORNINGSIDE'S LITERARY MAGAZINE IS SPONSORED BY THE CREATIVE WRITING CLASS AND COMES OUT IN THE SPRING.





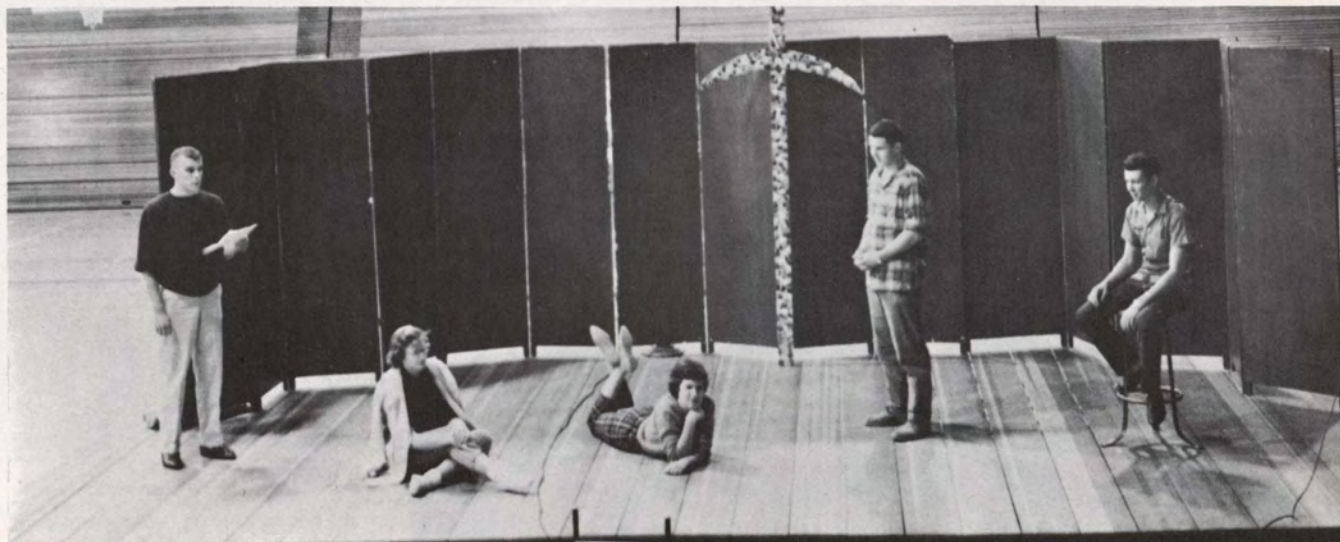
## CHORAL SPEAKING



Members of the choral speaking class, Nancy Lewis, Loren Andrews, Virginia Bailey, Craig Croston, Carl Bennett, Marilyn Gauger, Ron Bolden, Gene Dow, and Stan Rocklin made a program honoring Lincoln which was presented to schools in the area. Morningside students saw them present "The Bomb that Fell on America" in chapel.

## TELEVISION DRAMA

A short play concerning the Christian on campus was acted by Loren Andrews, Nancy Lewis, Marilyn Gauger, Steve Pohlman, and Allen Call. It was given on the "College on Camera" television show.





## FORENSICS



DEBATERS AND INDIVIDUAL EVENTS: JIM PUCKETT, JERRY VAUGHAN, BARBARA LARSON, DIANE HUNTSINGER, MARV ESSING. MISSING IS LOREN ANDREWS, TED I, AND SALLY COMFORT.

INDIVIDUAL EVENTS PARTICIPANTS: DONNA PETTITT, MAROLDINE SMITH, AL ANDERSON, JERRY KANTROVICH, DAN WOLFF, JERRY ANDERSON, JANE SPAULDING. MISSING IS LEE JENSEN.



AL ANDERSON CAPTURED A SUPERIOR AT SOUTH DAKOTA U. FOR HIS BEATNIK POETRY INTERPRETATION.



Morningside forensic students participated in eight intercollegiate contests during the year. Held at schools in the midwest, Morningside students competed against schools from Iowa, Kansas, Minnesota, Missouri, Nebraska, Oklahoma, South Dakota, and Wisconsin.

The debate squad finished strong to overcome some early-season losses and finished with a 50 per-cent win record for the year.



DIANE HUNTSINGER WON TWO SUPERIOR RATINGS: ONE IN ORATORY AT THE STATE MEET AND ONE IN EXTEMPORANEOUS SPEAKING AT NEBRASKA UNIVERSITY.

THE LATE SEASON RALLY WAS HIGHLIGHTED BY THE MEN'S TEAM OF MARV ESSING AND JERRY VAUGHAN. THEY WENT UNDEFEATED AT THE STATE MEET AND GRABBED A SUPERIOR AWARD FOR THEIR FIVE WINS AND ONE LOSS RECORD AT THE PI KAPPA DELTA PROVINCIAL TOURNAMENT AND CONVENTION AT CONCORDIA COLLEGE. JERRY RECEIVED SUPERIOR RATINGS IN THREE EVENTS: DEBATE, EXTEMPORANEOUS SPEAKING AND DISCUSSION.



## ALPHA PSI OMEGA

Alpha Psi Omega, honorary dramatics fraternity, confers membership upon those students who have participated in college drama productions as actors, stage manager, stage crew, lighting crew, make-up and costume committees. This year the Morningside chapter sponsored some film classics shown on campus.



FRONT ROW: ROSALEE SPROUT, MARV ESSING, BETTY MADSEN. BACK ROW: MR. QUINN, WALLY SPIEGEL, SUE McMURRAY, NANCY LEWIS, DAN WOLFF, LOREN ANDREWS, CARL BENNETT.



## PI KAPPA DELTA

Pi Kappa Delta, a National Forensic Fraternity on campus since 1913, has five active new members this year. Special congratulations go to Marvin Essing and Jerry Vaughan for their superior rating as a debate team at the Pi Kappa Delta regional tournament. The officers are Loren Andrews, President; Craig Croston, Vice President; and Charlene Wilmarth, Secretary.

MR. LEE, MARV ESSING, SALLY COMFORT, JERRY VAUGHAN, DIANE HUNTSINGER, LOREN ANDREWS, BARBARA LARSON, CRAIG CROSTON, MARY SIEVERT, TED I, CAROLE OLESON.



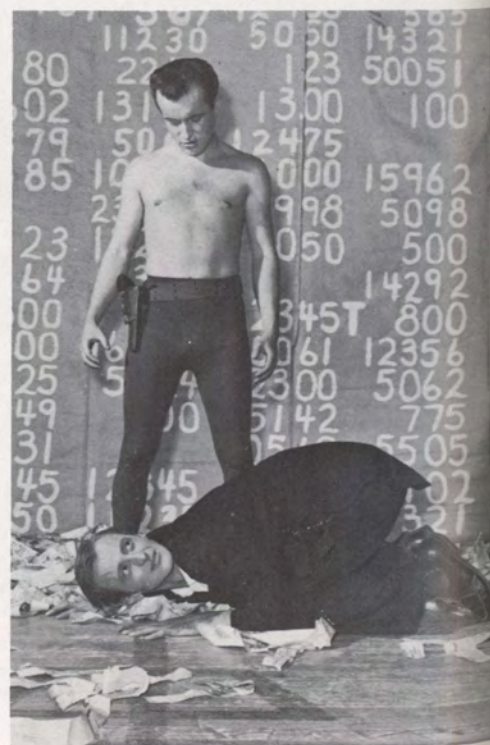


MR. ZERO PLEADS HIS CASE TO A STONE-FACED JURY, BUT TO NO AVAIL; HE WAS SENTENCED TO DEATH.

## THE ADDING MACHINE

### CAST

Mr. Zero	Gene Dow
Mrs. Zero	Diane Huntsinger
Daisy	Diana Dorothea Devore
	Rosalee Jacobson Sprout
Boss	Delane David
Mrs. One	Charlene Wilmarth
Mr. One	Ed Antonette
Mrs. Two	Nancy Lewis
Mr. Two	Darrell Kaufman
Mrs. Three	Julia Bedell
Mr. Three	Franklin Egolf
Mrs. Four	Kathie Young
Mr. Four	John Braheny
Mrs. Five	Ladonne Popkes
Mr. Five	Bob Frey
Mrs. Six	Marilyn Gauger
Mr. Six	Dave Rogula
Policeman	Craig Croston
Judge	Jerry Vaughan
Judy	Karol DeMoss
Young Man	Ed Antoinette
Shrdlu	Loren Andrews
Head	Dave Rogula
Joe	Franklin Egolf
Lt. Charles	John Braheny





In December, Robert Quinn directed his first production at Morningside. This was also the first of the college's two yearly dramas.

This controversial play loaded with satire against the American common man, starred Gene Dow as Mr. Zero. Cowardice, bigotry, stupidity are the characteristics of Elmer Rice's "hero." Trapped for twenty-five years in a deadly job of adding up columns of figures, he makes one daring act and murders his boss. An unorthodox view of heaven as an Elysian field, shocks Zero's narrow mind and he leaves, to return to earth, in an eternally degenerating cycle.



MRS. ZERO NAGS HER HUSBAND IN MONOLOGUE WHILE HE IGNORES HER.

DAISY, HEROINE OF THE 'ADDING MACHINE', PLEADS WITH MR. ZERO TO STAY WITH HER IN PARADISE.



TWO TIMID SOULS, GUILTY OF TWO VIOLENT CRIMES, COWER IN TERROR—SHRDLU AND MR. ZERO.





## MANY MOONS

A modern version of an old-fashioned fairy tale, *Many Moons* was a charming children's play. Written by James Thurber, it managed to poke wry fun at modern parents who will do anything to please their children.



THE JESTER TELLS THE GOLDSMITH'S DAUGHTER HOW BIG TO MAKE A MOON.

THE HORRIFIED COURT GATHERS AROUND ITS PRINCESS WHO HAS SWOONED.





THE NURSE AND THE DOCTOR ARE BUSY  
TAKING THE PRINCESS' TEMPERATURE.



THE KING AND THE JESTER CONTEMPLATE THE PRINCESS, WHO IS PINING  
AWAY FOR SOMETHING, BUT SHE DOES NOT KNOW WHAT IT IS.

King	Gene Quilleash
Princess	Sharon Schwartz
Jester	Gary Ritz
Mathematician	Frank Egolf
Wizard	Bob Johnson
Chamberlain	Jerry Anderson
Paretta	Sally Comfort
Cynicia	Rosalee Sprout
Nurse	Sue McMurray
Doctor	Carl Strempeke
Goldsmith's Daughter	Donna Pettitt



THE JESTER GUESSES WHAT  
IS AILING THE PRINCESS.

THE WISE MEN FAIL TO CURE THE PRINCESS.





## ART

The art department collects paintings, sculpture, ceramics and other projects throughout the year to present at their annual student show in May. The exhibit includes a wide range of work, showing the scope from every art class. Required for all graduating art majors is a senior show of their own.



THE ART STUDENTS CREATE IN CROWDED QUARTERS, LOOKING FORWARD TO THE NEW FINE ARTS BUILDING.

SENIOR BOB WALKER PREPARES FOR HIS JOINT SHOW WITH FRED EVANS. TWO OF BOB'S WOOD SCULPTURE PIECES WERE ACCEPTED FOR THE ALL IOWA ARTIST SHOW IN DES MOINES.





# Sports







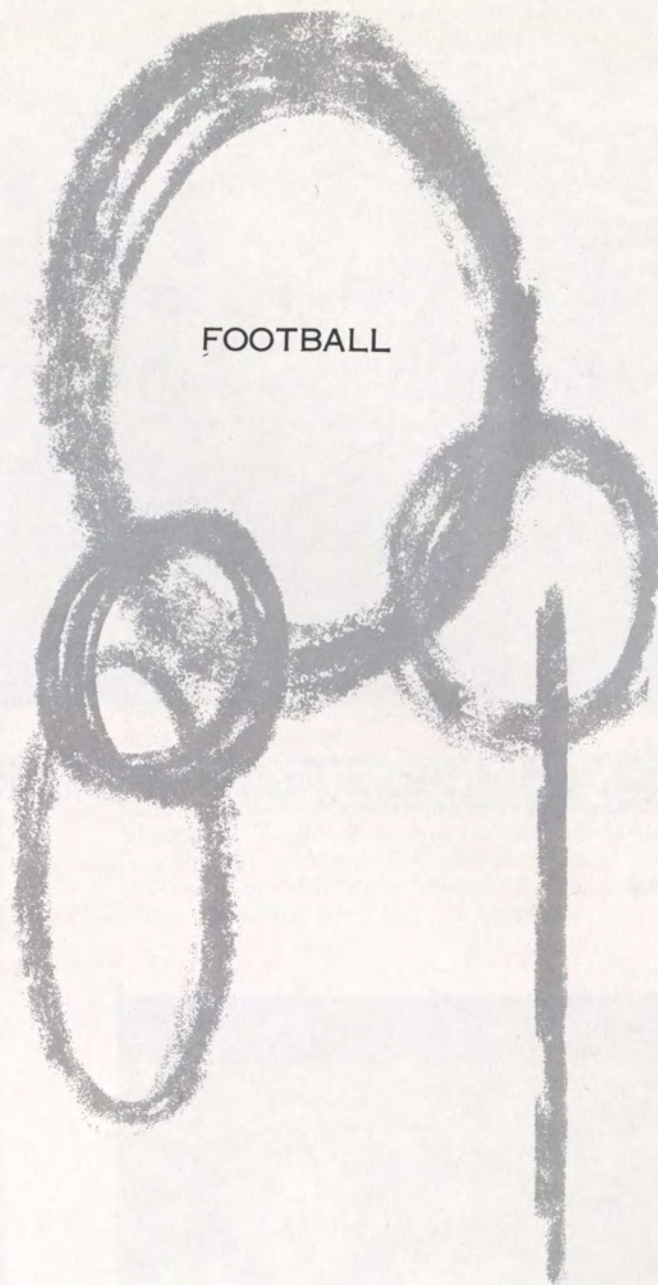


# FOOTBALL



## CHIEFS BOARD OF STRATEGY:

DIRECTOR OF ATHLETICS A. W. BUCKINGHAM, HEAD COACH DEWEY HALFORD, ASSISTANT COACHES DON PROTEXTOR, JACK JENNETT, CHUCK OBYE.



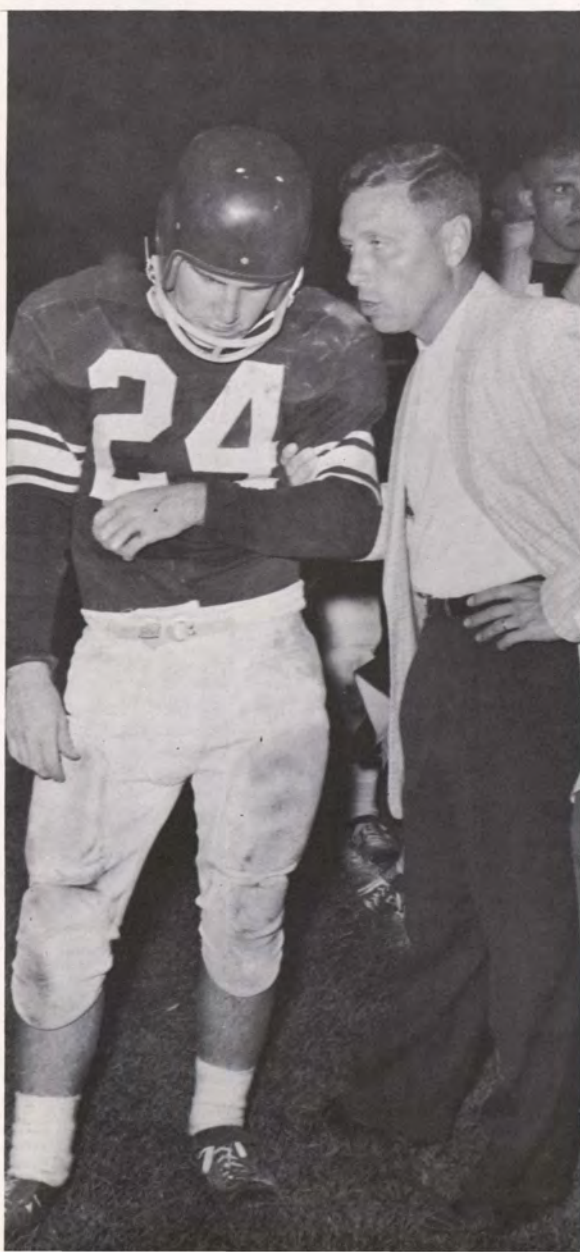
## THE MAROON CHIEFS 1959 FOOTBALL SCHEDULE

Morningside—14	Central Missouri State—6
Morningside—20	Omaha University—7
Morningside—24	North Dakota University—6
Morningside—20	North Dakota State—28
Morningside—7	Missouri Valley—12
Morningside—14	Iowa State Teachers—22
Morningside—21	Augustana—27
Morningside—34	South Dakota State—32
Morningside—9	South Dakota University—8





FRONT ROW: LYMER, JOHNSON, CARTER, MENAGE, EHWEGER, ADAMS, ROBERTS, HENDRICKSON, GUSTAFSON. SECOND ROW: JOHNSON, HUCKA, MAXON, TRAVER, SLATER, DORNON, LEINBAUGH, VER HEUL, CURRY, PARSONS. THIRD ROW: OBYE, PROTEXTOR, WATKINS, MOUNTS, MAGILL, HANSEN, LEHNER, COOK, BLOCK, CORBIN, SCHMIDT, VANDER WEIL, COACH PROTEXTOR, JENNETT.



The Morningside Maroon Chiefs concluded the 1959-60 grid season with a 3-3 North Central Conference record and an over-all record of 5-4. Even though the pigskin squad numbered 25 they were never outclassed; taking no losses with a margin greater than one touchdown. Coach Dewey Halford's subjects are to be commended on their stand with so small a squad in the gridiron conference.

The grid season opener for the Chiefs ended in a 14 to 6 victory over Central Missouri State College. Elmer Menage started the tally drive with a 67 yard T.D. in the first period. Ending the scoring on a 76 yard set play by Menage, Jerry Ehwegen sneaked from the half for the final.

Omaha University bowed 20-7 in the Maroon's second match. For the first touchdown, Ehwegen flung the pigskin 20 yards to receiver Menage who sneaked across. Ehwegen convoyed the ball over for the final Chief score.





**Elmer Menage, Halfback**



**Jerry Ehwegen, Quarterback**



**C. J. Hinrichsen, Halfback**



**Bill VerHeul, Halfback**



**John Tollakson, Halfback**

The Chiefs racked up another win when they trampled North Dakota University 24 to 6. This was the Maroons' first conference appearance. Jerry Adams whizzed across from the one for the Chiefs' first tally. With minutes to play the Maroons marched to the one and sent Menage toting the pigskin over for the last score.

Morningside was handed its first defeat when North Dakota State at the annual band day festival, marched away with a 28-20 conference victory. Dale Traver, after a 59-yard drive, carried the pigskin from the four to rack up the Chiefs' first tally. For the final T.D. Menage sensationally raced mid-field 95 yards, but North Dakota tallied once more on a fumble play.

On a rain-soaked field, the Chiefs fell to Missouri Valley College 12-7. Jerry Magill blocked a Valley kick and recovered on their 7. Traver crossed for the first and only touchdown. Menage booted for the extra point boosting the tally to seven.







**Dale Traver, Halfback**



**Dick Gustafson, Fullback**



**Larry Leinbaugh, End**



**John Dornon, Quarterback**

Iowa State Teachers College scrambled off field handing the Maroons a 22-14 loss in Morningside's homecoming activities. Morningside's first score came in the third quarter with a 10-yard right end sweep by Traver. A 48-yard pass-run play from John Dornon to Keith Maxon ended the Chiefs' tally drive. The loss placed the Maroons in a fifth place tie with ISTC in the North Central Conference.

The Maroon Chiefs succumbed to Augustana College 27 to 21 as steady winds swept the field. In the first quarter with the wind at his back, Traver raced for a 15-yard tally and crossed again from the one to boost the Chiefs' score. Dornon passed 39 yards to Jerry Block to score a T.D. and Menage kicked the extra point for the Maroons' final point.

In a traditionally high scoring contest, the Chiefs walked away with a 34 to 32 conference victory over South Dakota State. In the first five minutes of play Morningside drove 58 yards sending Ehwegen from the five for the first T.D. Menage on a double reverse crossed for the last tally.

The Morningside Chiefs completed their season by shocking South Dakota University 9-8 on a wet and snowy field. The Maroons first hit pay dirt with a field goal by Menage from the 28-yard line. The winning points came in the third quarter when Traver blasted into the end zone for the final tally of the season.



**Keith Maxon, Halfback**

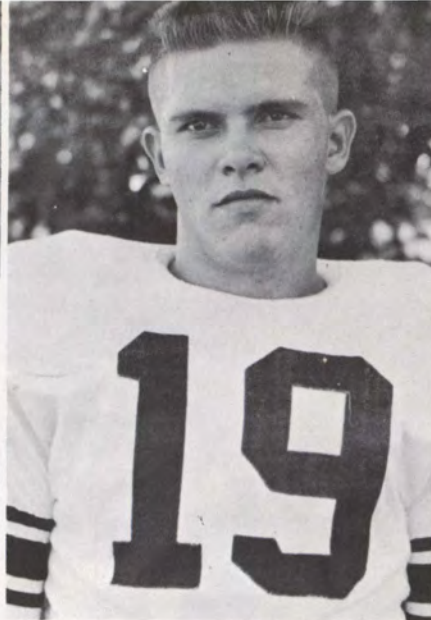
**Jerry Adams, Fullback**







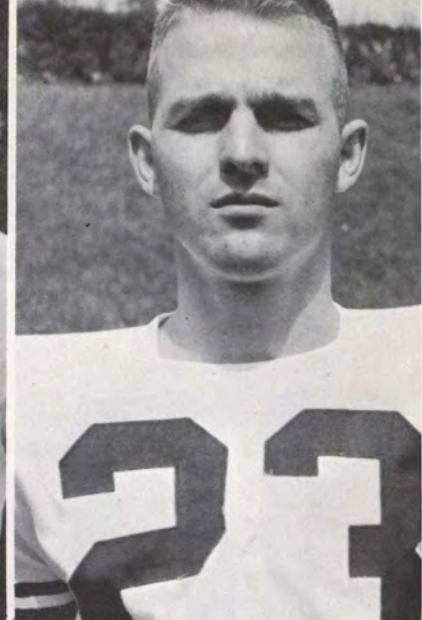
Dallas Hucka, End



Dick Slater, End



Jerry Block, End



Paul Vander Weil, End

Terry Roberts, Guard



Doug Johnson, End



LeRay Carter, Guard

Gary Johnson, Center







Eugene Lehner, Tackle



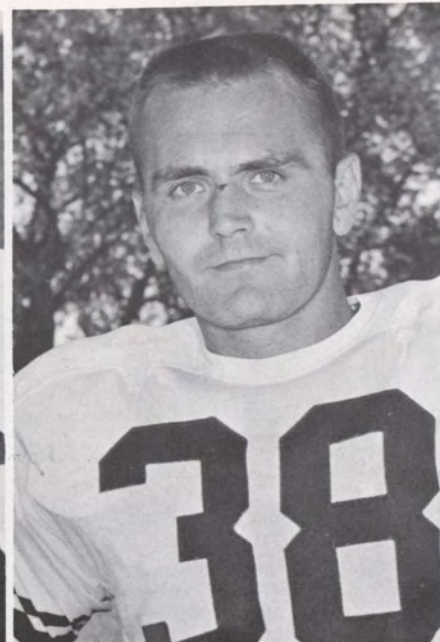
Roger Curry, Center



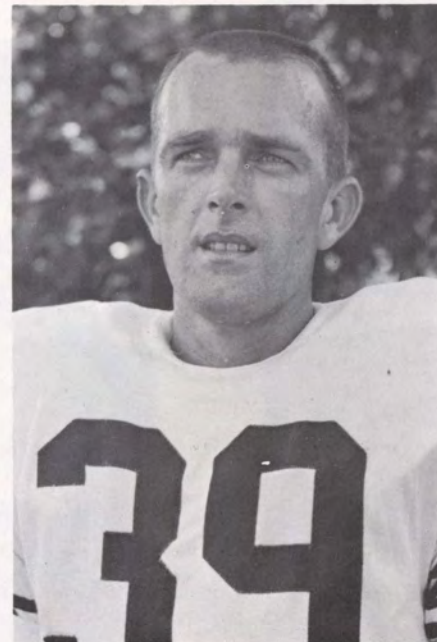
Mike Watkins, Tackle



Chuck Corbin, Guard



Carlton Tronvold, Guard



Chuck Mounts, Guard







Jerry Magill, Tackle



Dick Schmidt, Tackle







FRONT ROW: BOB WALLMAN, JERRY PRATT, PAUL MACKEY, JIM DAVIS, FRED WOCKENFUS, RODNEY SEARLS, ROGER LORENGER, DICK OLSON, DICK NULL, RON MADSEN. SECOND ROW: RON BRUGMAN, JIM SWANSON, BOB PASCAL, JIM JACOBSON, CHUCK LUNDQUIST, JOE EACHES, BILL KURTH, BOB BRINK, ROGER HANSEN, KEN SCHWENDEMANN. BACK ROW: JOHN ROSENBERGER, DICK NATION, MERLYN KIMBELL, JARED OWEN, KEN MILLER, MERLE DELFOSSE, JERRY BEAN, LEO HUPKE, GRAHAM GOULD, LARRY LICHTENBERG, DAVE BONES, COACH PROTEXTOR.

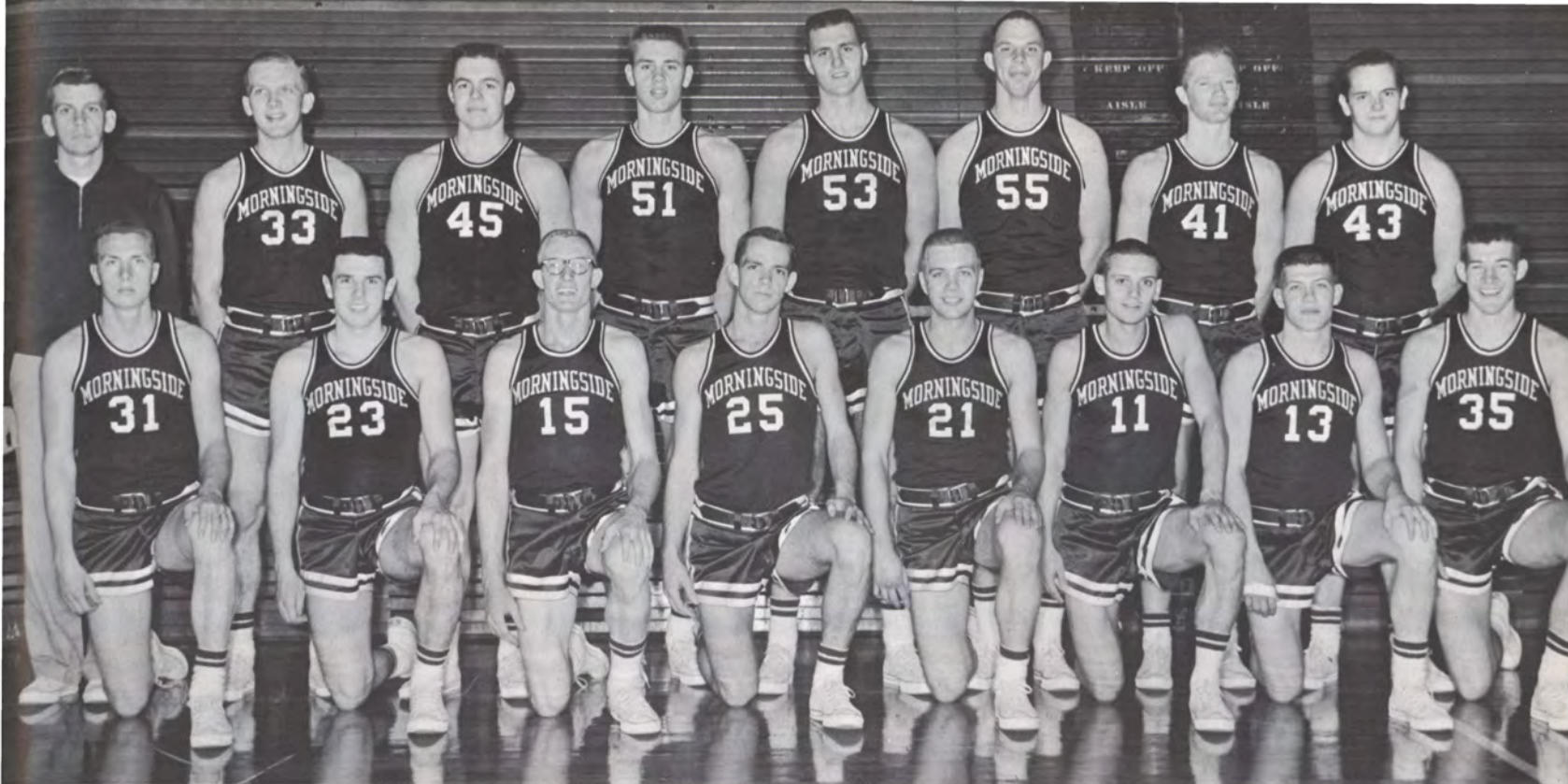
## FRESHMAN

## ATHLETICS



FRONT ROW: COACH JENNETT, AL VAN HOUTEN, DAVE BONES, JERRY BIRDSALL, VERNON BELL, DICK NULL, GORDON KOKENGE. BACK ROW: LARRY LAGE, LARRY GEARHART, ROGER HANSEN, KEN SCHWENDEMANN, MAHLON STIEF, RON HEITRITTER.





FRONT ROW: STRIPLING, POHLMAN, MATHER, JOHNSON, KOLBECK, KOHNKE, TESTROETE, MULDER. BACK ROW: COACH OBYE, ANFINSON, THOGERSON, STOCK, GARRETSON, BLOCK, KELLOGG, PRUITT.

## MORNINGSIDE COLLEGE

### 1959-60 BASKETBALL SCHEDULE

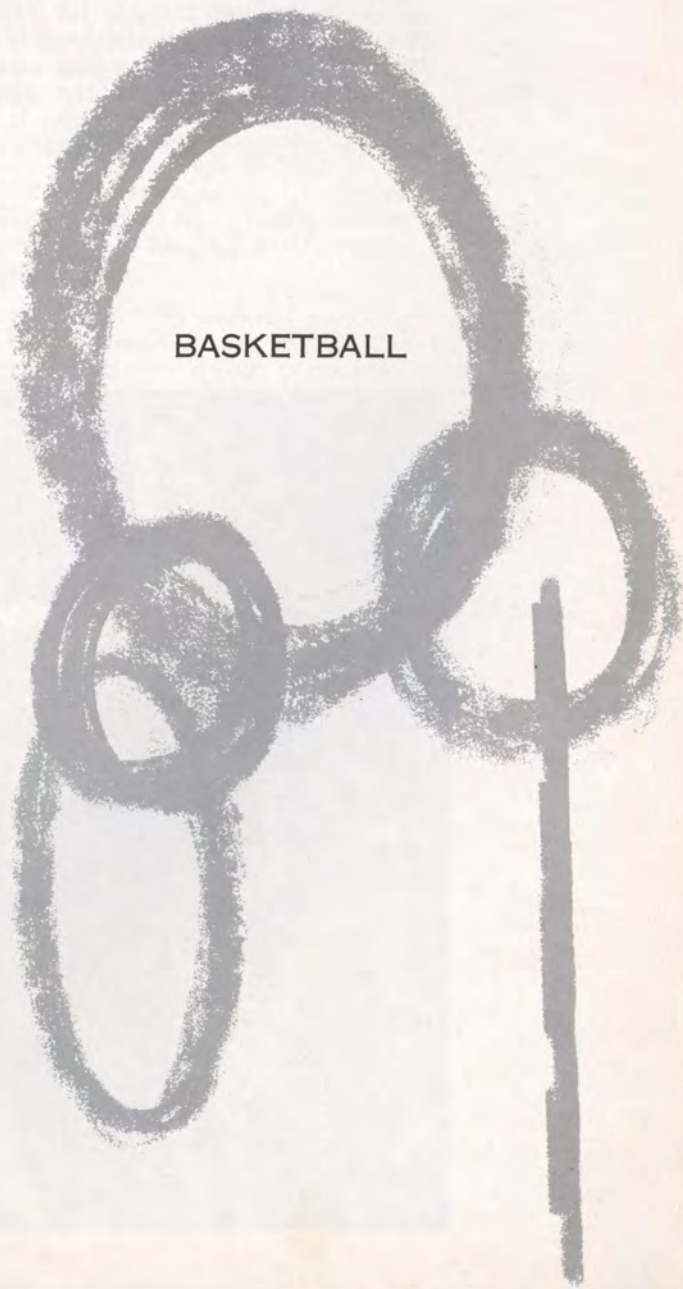
Morningside..58	Westmar College .....	68
Morningside..82	Cornell College .....	92
Morningside..63	Mankato State Teachers College.....	78
Morningside..66	Simpson College .....	59
Morningside..63	South Dakota University.....	96
Morningside..64	North Dakota University.....	81
Morningside..65	North Dakota State .....	89
Morningside..63	South Dakota State .....	74
Morningside..86	Westmar College .....	80
Morningside..69	Iowa State Teachers College.....	101
Morningside..64	North Dakota University.....	56
Morningside..86	North Dakota State .....	87
Morningside..71	Omaha University .....	79
Morningside..89	South Dakota State .....	97
Morningside..97	Augustana College .....	81
Morningside..64	Iowa State Teachers College.....	90
Morningside..61	Augustana College .....	82
Morningside..93	South Dakota University.....	68

#### Wayne State Invitational Tournament

Gustavus Adolphus.....	73	Wayne State.....	58
------------------------	----	------------------	----

*Morningside .....	68	Augustana .....	78
--------------------	----	-----------------	----

\*Consolation game.



BASKETBALL

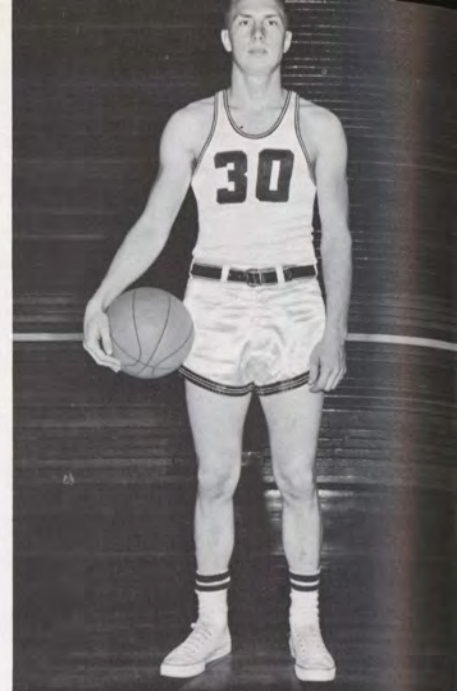


The Morningside Maroon Chiefs ended their 1959-60 basketball season with a sixth place standing in the North Central Conference. Over-all the Chiefs' record was five and 15. The Maroons' offensive average was 71.5 while the defensive average was 80.4. In conference play the Chiefs averaged 74.0 to the opponents' 83.5. Leading scorer for the Morningside cagers this season was Bob Garretson with 319 points in 20 tilts for a 15.9 average. Ken Stripling tagged close behind with 15.2. Garretson topped the rebounding department with 250 while Stripling seconded with 148.

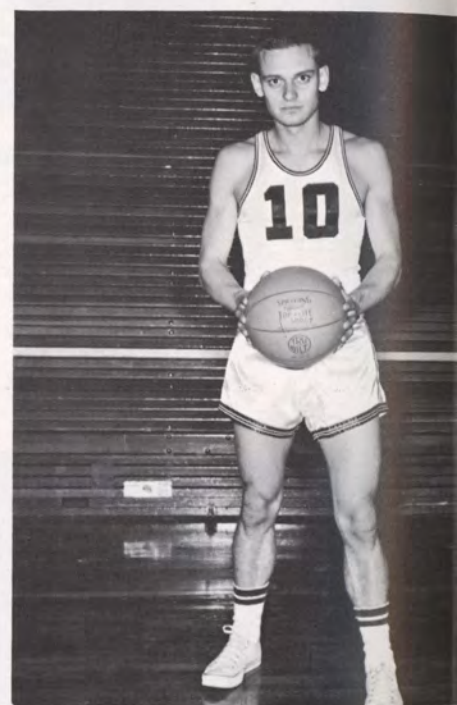
The Morningsiders fell victim to the Westmar Eagles 68-58 in their season opener. Never having a chance for a comeback after the Eagles jumped to an early lead the Maroons out scored Westmar from the field 21-19. However, the Eagles garnered 28 of 40 charity tosses as compared to the Chiefs' 16 of 28. Bob Garretson connected for 20 points to lead the Maroon scoring.

In their second tilt of the season the Chiefs dropped to Cornell College 92-82. The two ball clubs fought to a 42 all deadlock as the half ended but the Rams came back to out-score the Maroons 50 to 40 to give them their margin of victory. Again Garretson tallied 20 and Jim Anfinson added 16 while Ken Stripling and Gary Kolbeck garnered 12.

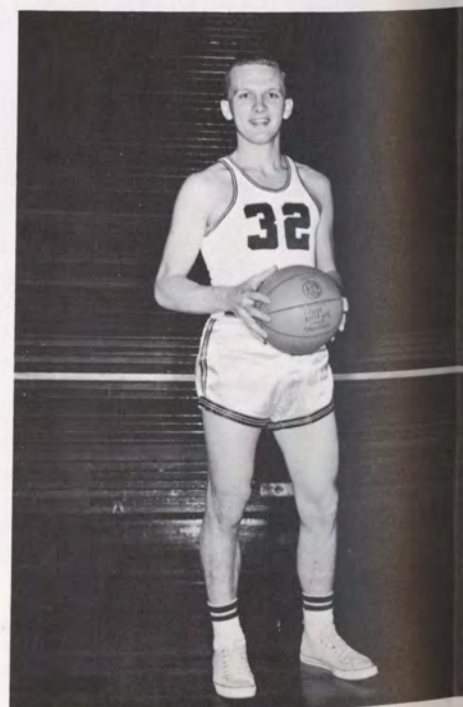
A fifteen point outburst by Mankato State early in the second half paved the way for a victory over the Morningsiders 78-63. Mankato took the lead in the second frame 40-35 but Morningside dropped in five straight points to deadlock the contest. Then suddenly the game broke wide open as the Minnesotans tallied 15 to make it 55-40. Kolbeck shredded the nets for 25 points and Garretson garnered 12.



**Ken Stripling**

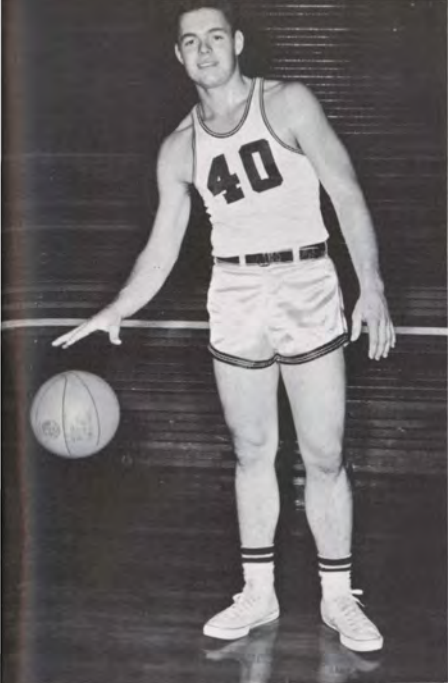


**Daryl Kohnke**



**Jim Anfinson**





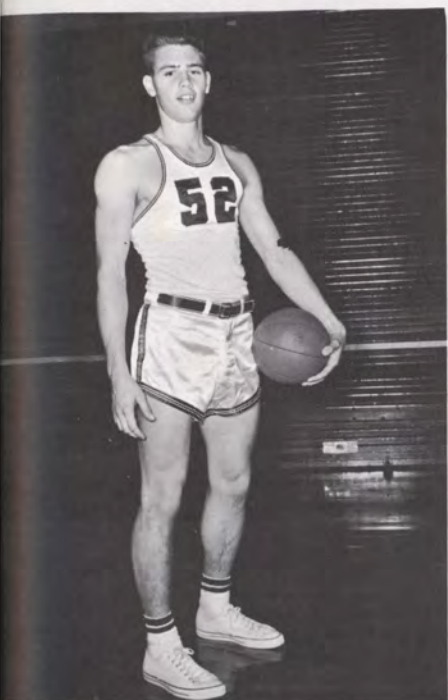
**Terry Thogersen**



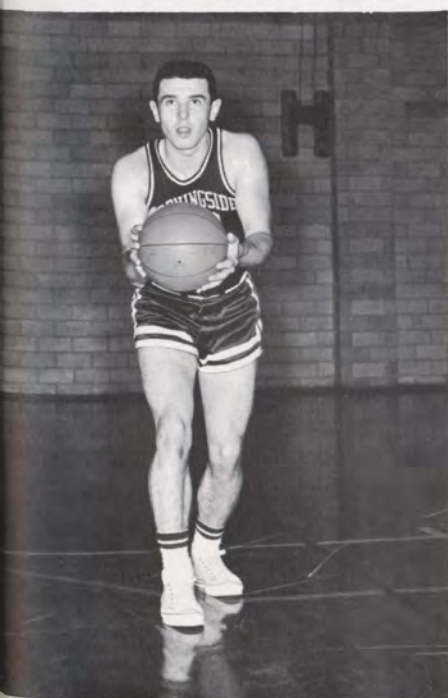
**Tom Kellogg**



**Gary Kolbeck**



**Jim Stock**



**Steve Pohlman**

The Chiefs won their first game by edging Simpson College 66-59. Jim Anfinson opened the contest with a lay-up putting the Morningsiders into the lead for good. The Chiefs out-scored the Simpson crew 9-2 in the last minutes to give them their first victory of the season. Garretson countered 22 and Stripling added 13.

South Dakota University clobbered Morningside in the Chiefs' conference opener 96-63. The Coyotes with a triple scoring threat won easily with the Maroons never in contention. Daryl Kohnke and Jim Stock topped the Chief's scoring with 13 markers while Garretson tallied 8. The SDU victory gave the Chiefs a 0-1 conference record.

The Sioux from North Dakota University slipped past the Chiefs 81-64. The score was knotted eight times during the initial frame with neither team holding over a four point lead.

North Dakota State trampled the Maroons 98-65 in the Morningsiders' seventh game of the season. The Bisons jumped to an early lead which the Chiefs never challenged. Stripling and Garretson led the losing Maroons with 20 and 16 counters.

Morningside fell to the league leading South Dakota State Jackrabbits 74-63. The game was a nip and tuck affair throughout the initial period until SDS dropped 10 points to gain the lead. The Maroons led early in the game 18-12 on points by Stripling, but the second half saw the Chiefs never point a challenge and the Bunnies marched to victory.

The Morningsiders had to pull one out of the fire to squeeze past the Westmar Eagles 86-80. The victory avenged an early season loss to the Eagles. Stripling and Anfinson led the Maroons attack with 17 and 15 points respectively. Stock and Terry Thogerson contributed 10 tallies each.

The Tutors from Iowa State Teachers romped past the winless Maroons in conference play 101-69. After leading 44-29 at intermission the Tutors poured in 57 points while the losers could garner only 40. Stripling led the Chiefs scoring with 26.





Paul TeStroete



Larry Johnson



Dick Pruitt



The Morningside Chiefs grabbed their first conference victory as they downed North Dakota University 65-56. The victors won the game from the charity line as they tossed in 33 gifters compared to 18 for the Sioux. Garretson took scoring honors for the winners with 17 points, 15 of them coming in the second period. Kolbeck and Dan Mather contributed 10 points each.

North Dakota State nipped the Maroons in an overtime thriller 87-86. Two charity tosses by conference scoring leader Bachmier gave the Bison their victory with :09 remaining. A last second jump shot by Garretson hit the rim and bounced off. Stripling led the tallies with 26, Garretson adding 15 and Kolbeck netting 13.

Morningside dropped their last chance for a road victory to Omaha University 79-71. The game was nip and tuck in the first frame as the Chiefs trailed 44-43 at intermission. Garretson, Stripling and Kolbeck paced the Maroons with 21, 20, 14 markers.

South Dakota State turned back a determined Morningside crew as the Jackrabbits staved off a late rally 97-89. The teams opened the game by matching buckets for the first ten minutes with the Chiefs in the lead 19-18. But the Maroons hit a cold spell as they could muster only four goals. Stripling dropped in 25 markers for the losing Chiefs while Kolbeck added 19.

The Morningside Chiefs captured their second conference victory outlasting Augustana 91-81. The Maroon cagers jumped into an early lead which the Vikings never seriously challenged. Garretson, Anfinson, Kolbeck and Stripling clutched the four pronged scoring attack for the winning Chiefs with 25, 24, 18, and 16 markers.





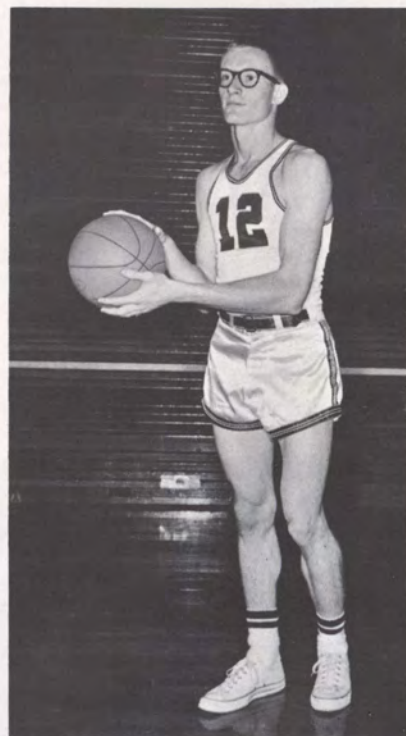
**Bob Garretson**

Iowa State Teachers crushed the Morningside crew 90-64 behind a torrid second frame. The Chiefs jumped into an early lead but ISTC captured the lead seconds later and exploded into their winning lead. Kolbeck, Stripling, and Garretson led the losing Chiefs with 16, 13, and 12 counters.

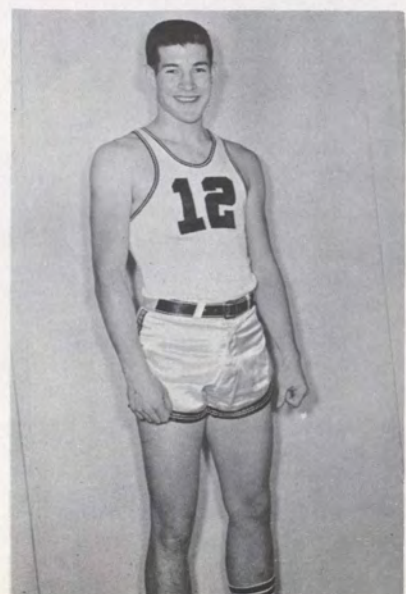
The Auggie Vikings revenged an earlier loss to the Chiefs as they outclassed the Chiefs 82-61. The Augustana crew jumped into an early lead and held a 10 point advantage throughout the contest. Garretson and reserve Larry Johnson led the Maroons with 17 and 10 points.

The Chiefs ended the season on a winning note as they surprised the South Dakota university Coyotes 93-68. The red hot Chiefs hit an amazing 67% from the field the first half. Five of the Chiefs scored in the double figures as Stripling and Kolbeck hit 23 and 22 points while Garretson, Anfinson, and Kohnke collected 14 counters each.

**Dan Mather**



**Dave Mulder**





# ACTION!



JIM STOCK FIGHTS AWAY FROM A TOUGH DEFENSE INTO THE OPEN.



STOCK LETS GO WITH A TIP-IN WHILE A SIOUX OPPONENT REACHES IN VAIN.



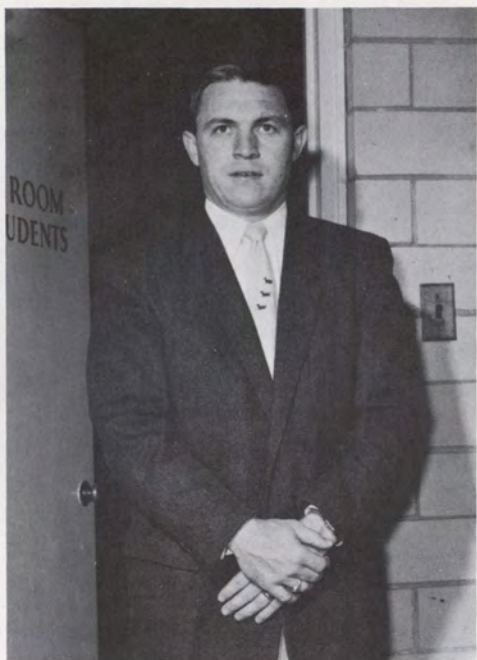
JIM ANFINSON HEADS OFF AN OPPONENT IN AN EARLY SEASON CLASH.

PAUL TE STROETE IS CAUGHT BETWEEN THE OUTSTRETCHED ARMS OF TWO OPPONENTS IN A SCRAMBLE FOR A REBOUND.

BOB GARRETSON ATTEMPTS TO OUTJUMP DEFENSIVE PLAYERS IN AN EFFORT TO GAIN THE BALL.







Coach Jennett

The Morningside thinclads showed well this season being particularly strong in the running events. The 880 yard relay squad, Scott Morton, Jerry Ehwagen, Elmer Menage, and Larry Thompson, set a record at the Morningside Quadrangular with a 1:32.9 timing. Elmer Menage at this same meet bettered the 100 yard dash record in his 10.2 clocking.

#### TRACK SCHEDULE

University of South Dakota Triangular  
University of South Dakota Invitational  
Morningside Quadrangular  
Westmar Triangular  
Drake Relays  
North Central Conference southern division  
Buena Vista Invitational  
North Central Conference

## TRACK



FRONT ROW: JERRY EHWEGAN, SCOTT MORTON, LARRY THOMPSON, JOHN TOLLAKSON, ELMER MENAGE. BACK ROW: COACH JENNETT, JOHN LIND, PAT JENNETT, DICK SCHMIDT, JERRY ADAMS.





JERRY ADAMS JUMPS THE LOW HURDLES  
IN EARLY SEASON PRACTICE.



ELMER MENAGE PREPARES TO RUN AS HE  
LEAVES THE BLOCKS.



JERRY EHWEGAN BREAKS THE WIRE TO  
WIN.



JOHN TOLLAKSON TAKES THE STICK FROM  
LARRY THOMSON IN A RELAY.

DISTANCE RUNNERS BOB CARLEY AND  
JOHN LIND WARM UP FOR A MEET.





# MORNINGSIDE TRACK RECORDS

EVENT	HOLDER	TIME OR DISTANCE	YEAR MADE
100 yd Dash	Kettle	9.8	1930
220 yd Dash	Hall	:22.2	1903
	Kettle	:22.2	1931
440 yd Dash	Hansen	:50.3	1930
880 yd Dash	Hansen	1:58.5	1929
One Mile Run	Domerow	4:35.0	1922
Two Mile Run	Chapman	10:05	1908
220 yd Low Hurdles	Van Wyngarden	:24.0	1932
120 yd Hurdles	Means	:15.5	1928
	Taylor	:15.5	1932
440 yd Relay	Sargeant-Williams- Hartzell-Cross	:43.8	1927
880 yd Relay	Kettle-Hansen- Bale-Mentor	1:29.4	1931
One Mile Relay	Kettle-Hansen- Bale-Mentor	3:25.6	1930
Two Mile Relay	Walker-Morely- Louely-Curry	8:15.0	1915
Mile Medley Relay	LaRay-Cleworth- Hoon-Wissen	3:43.0	1924
Pole Vault	Bobier	12' 10"	1957
High Jump	Jansen	5' 11"	1927
Broad Jump	Daniels	22' 6 $\frac{2}{3}$ "	1949
Shot Put	Fodness	45' 9 $\frac{1}{2}$ "	1937
Discus Throw	Gotloff	135' 8"	1931
Javelin	Krone	182' 2"	1953
Hammer	Quarnstrom	121' 3 $\frac{1}{2}$ "	1911





MEMBERS OF THE BASEBALL SQUAD: LLOYD DEMOSS, JIM ANFINSON, JERRY BLOCK, DAVE MULDER, BOB GARRETSON, DON MILLER, JIM STODDEN. BACK ROW: WENDELL HANSEN, JAE JOHNSON, KEN GOECKE, HAROLD POPPEN, PAUL TESTROETE, DARYL KOHNKE, GARY WARDLOW, DENNIS METCALF, AND COACH PROTEXTOR.

## BASEBALL



Coach Protector

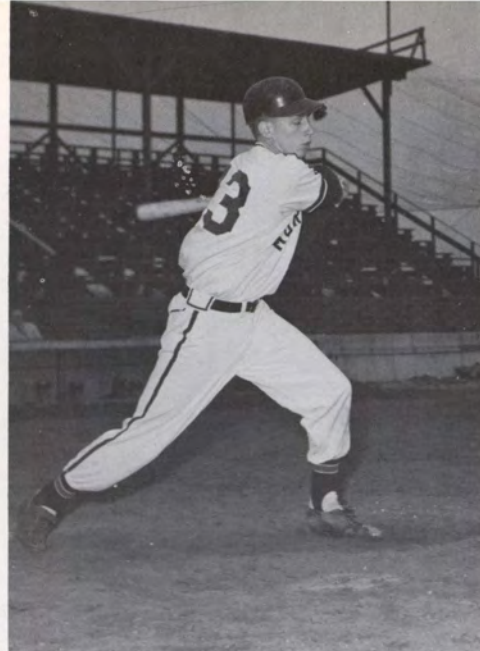
The baseball "nine" captured some early victories in diamond action. One of the highlights of the season was the trip made to the Air Force Academy for a doubleheader. The Flying Falcons defeated the Chiefs 5-4 the initial game while the second tilt was called off because of inclement weather.

### Schedule

Westmar	South Dakota University
Midland	Buena Vista
Air Force Academy	Iowa State Teachers
South Dakota State	Omaha University
Augustana	



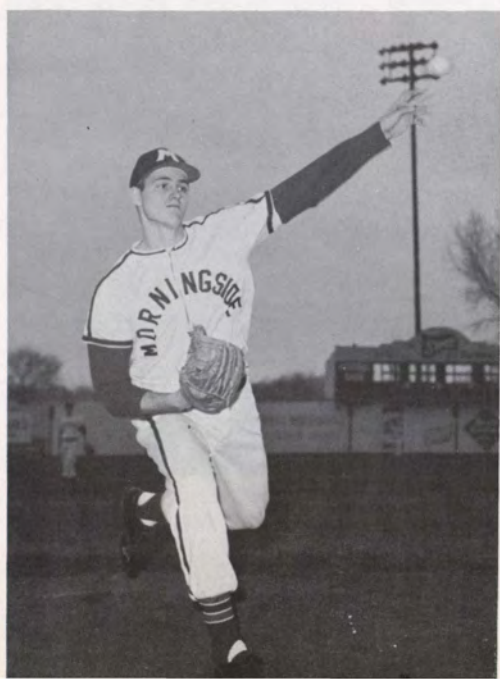
COACH PROTEXTOR GIVES THE STARTING LINE-UP TO PAUL TE STROETE BEFORE GAME TIME.



KEN STRIPLING SWINGS FOR A BASE HIT IN AN EARLY SEASON GAME.



MEMBERS OF THE BASEBALL SQUAD SIT IN THE DUG OUT AWAITING GAME TIME.



ABOVE DENNIS METCALF AWAITS A GROUNDER IN AN EARLY SEASON TILT.

TO THE LEFT BOB GARRETSON LETS GO WITH A PITCH FROM THE MOUND.



## GOLF



A GOLFER PUTTS.

The Morningside golf team opened the season with a draw with the linksmen from South Dakota University. Captain Keith Welcher was top medalist for the Chiefs in the match with a four over par 76.

### SCHEDULE

Loras	Augustana
Iowa College Tournament	Creighton University
Nebraska State Teachers	Omaha University
South Dakota University	Conference Meet



MEMBERS OF THE VARSITY GOLF SQUAD POSE ALONG WITH MEMBERS OF THE SOUTH DAKOTA UNIVERSITY SQUAD. MORNINGSIDE LINKSMEN ARE DON TEMOSHEK, PAT JENNETT, MIKE SMITH, AND KEITH WELCHER.

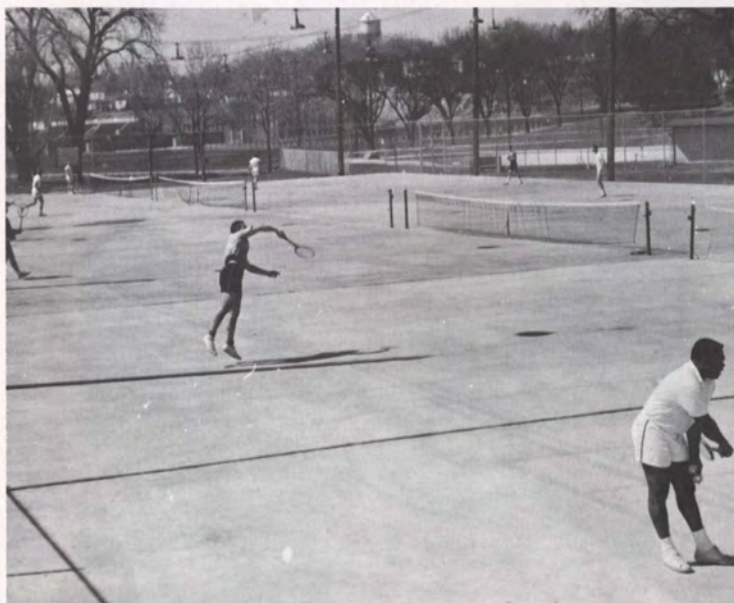




DON TEMOSHEK, MORNINGSSIDE LINKSMAN, TEES OFF IN AN EARLY SEASON MATCH. MEMBERS ON THE CHIEF SQUAD LOOK ON IN THE DISTANT.

## TENNIS

This year the Maroon Chiefs did not field a tennis team for the first time in several years. With only two lettermen returning and no other candidates available it was decided to forego varsity competition. However, Gene Quilleash and Bobby Walker entered the conference tournament for the Chiefs. A promising group of freshmen should enable the resumption of tennis in 1961.



BOBBY WALKER PRACTICES ON THE COURTS FOR THE CONFERENCE TOURNAMENT.



## MOST VALUABLE PLAYER



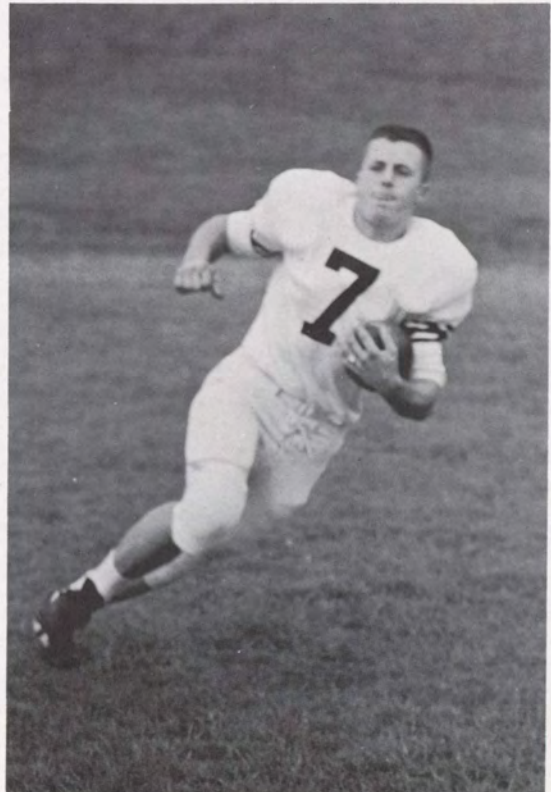
GARY KOHLBECK AND GARY JOHNSON WERE NAMED MOST VALUABLE PLAYERS IN FOOTBALL AND BASKETBALL ACTION AT THE GREATER SIOUX CITY ATHLETIC ASSOCIATION SPORTS BANQUET. JOHNSON, CO-CAPTAIN OF THE FOOTBALL SQUAD, WAS THE MAINSTAY AT CENTER AND RECEIVED NORTH CENTRAL CONFERENCE RECOGNITION. KOHLBECK, DEFENSIVE BALL HAWK FOR THE MAROON CAGERS AVERAGED 11.3 COUNTERS IN HIS LAST YEAR.



## MOST IMPROVED PLAYER



JERRY ADAMS AND JIM STOCK WERE PICKED AS THE MOST IMPROVED PLAYERS OF THE SEASON IN BASKETBALL AND FOOTBALL. ADAMS, FULLBACK, WAS A CONSTANT THREAT IN ALL GAMES DESPITE HIS LACK OF BULK. HIS BEST GAME CAME AGAINST SOUTH DAKOTA UNIVERSITY AS HE CARRIED THE BALL EIGHT TIMES FOR 70 YARDS. STOCK, A ROUGH SCRAPPER UNDER BOTH THE DEFENSIVE AND OFFENSIVE BOARDS AVERAGED 6.1 POINTS IN HIS FIRST YEAR AS A REGULAR.





# Great Greeks









## GREEK WEEK



HEAVE HO! MUSCLES OF DELTA SIGS AND SIG EPS STRAIN IN THE TUG OF WAR.



THREE GRECIAN MAIDENS:  
MARCIA SHOEMAKER, NANCY  
LEWIS, AND KAREN INMAN.

A MAD SCRAMBLE FOR THE WATER POLO BALL.



GAIL WADHAMS PULLS AHEAD OF DIANE  
HUNTSINGER IN THE FOOT RACES.



DAVE BIESEMEYER AND NANCY LEWIS ACCEPT THE FIRST-PLACE  
TROPHIES FOR DELTA SIGMA PHI AND ALPHA DELTA PI.





## ALPHA DELTA PI



FIRST ROW: NANCY LEWIS, NORMA ZIMMER, KAY CONOVER, JOYCE SKAGGS, MRS. WALTER BENJAMIN, ADVISOR, NANCIE ENSOR, JOANNE SCHNELL, PEGGY CREWDSON, ELAINE ARVESON, PHYLLIS SPIEGEL. SECOND ROW: SALLY PRINCE, VIRGINIA BAILEY, BARBARA LARSON, JEANETTE BLANCHARD, DELORES EMMERSON, MARY EHRHARDT, SANDRA BURNS, MARILYN GAUGER, KAREN RODGER, LUANNE GREGALUNAS, SHARON SWANSON, DIANNE SPIEGEL, JEANINE ARNOLD. THIRD ROW: LOUISE SIMMON, BONNIE ANDERSON, DIANNE HUNTSINGER, KAREN BOHN, CAROL PATTON, CONNIE RHOADS, SHARDELL SULSBERGER.

### OFFICERS

KAREN RODGER, RECORDING SECRETARY; PEGGY CREWDSON, PRESIDENT; NANCY LEWIS, VICE PRESIDENT. SECOND ROW: MARY EHRHARDT, HOUSE CHAIRMAN; MARILYN GAUGER, MEMBERSHIP CHAIRMAN; JEANETTE BLANCHARD, TREASURER; AND KAY CONOVER, CORRESPONDING SECRETARY



A D Pi's filled a year with happy memories of parties, dances, exchanges with three fraternities. The pledges struggled to buy the new stereo, and alumnae brightened the hall with new drapes. Jeanine Arnold wore the Agora princess crown. Best of all was Greek week — the new first place trophy stood beside last year's. The scholarship plaque had Alpha Delta Pi engraved on it again. A high point was the formal, and Pi's went under the sea. Then spring brought picnics, monument races, Mother's Day tea, and another A D Pi Sioux Queen.



A TRADITIONAL VALENTINE PARTY ENTERTAINED  
COMMUNITY HOUSE CHILDREN.



FATHERS WERE GUESTS OF HONOR ON DAD'S  
NIGHT.



**Ted Tiemens**

ALPHA DELTA PI MAN OF THE YEAR

THE PI'S WERE ECSTATIC OVER  
THEIR NEW GREEK WEEK TROPHY.







FRONT ROW: NORMA JEAN GLEASON, AMY TAKATA, BEVERLY FRAZIER, FAITH CRIPPEN, MARILYN BROOKER, GAIL WADHAMS, LINDA WILLIAMS. SECOND ROW: DEANNA SNAVE, BARBARA HENSHAW, JEANNIE DUFF, JOAN ROLFS, SUE McMURRAY, MARY LOUISE LUNDQUIST, KAREN INMAN, BARBARA MCCUTCHEON, DIANE BUSHYAGER, DEANNA CARPENTER. BACK ROW: JEANNE HAUGEN, MARCIA HOCHINS, DEANNE MADSEN, JUDY MARSH, NANCY BIRKBECK, MARY LYNN MOSSENGREN, ELAINE CARTER, DIANA BURG, NITA HANSON, MARY STACHOUR, VIRGINIA TRAFTON.



OFFICERS: DIANE BUSHYAGER, PRESIDENT; BARBARA MCCUTCHEON, TREASURER; JUDY MARSH, HISTORIAN; MISS TIFT, ADVISOR; MARCIA HOCHINS, RECORDING SECRETARY; JEAN HAUGEN, CORRESPONDING SECRETARY; MARY MOSSENGREN, 2ND VICE-PRESIDENT; KAREN INMAN, 1ST VICE-PRESIDENT.



THE NEW PLEDGES ARE GIVEN "MOTHERS" TO HELP THEM GET THE MOST OUT OF SORORITY LIFE. THIS PHASE: SCHOLARSHIP.



Getting the year off to a good start, the Delta Zetas held a faculty tea and reception in the dorm drawing room. Other events followed: the pledges were presented the first place trophy for their bit of melodrama at the fall Greek dance, the annual DZ Follies went beatnik for second prize honors and was the big money booth of the Agora Carnival, a can-can line was formed for Club ATD, and the formal, with the Sig Eps, had a Bali Hai theme. Beauty honors were bestowed: Mary Louise Lundquist was homecoming queen with two Delta Zeta attendants, and Linda Williams was Queen of Hearts, with one sorority attendant, the judges selected two DZ attendants for Sioux Queen. Familiar faces at athletic events were cheerleaders Mary Mossengren, Diane Bushyager, and Nancy Birkbeck.



DELTA ZETA MAN OF THE YEAR  
**Harold Poppen**

THE HALL TURNED INTO A JUNGLE FOR ONE RUSH PARTY.



ADVISOR MISS BEATRICE TIFT WELCOMES AT THE FALL RECEPTION.

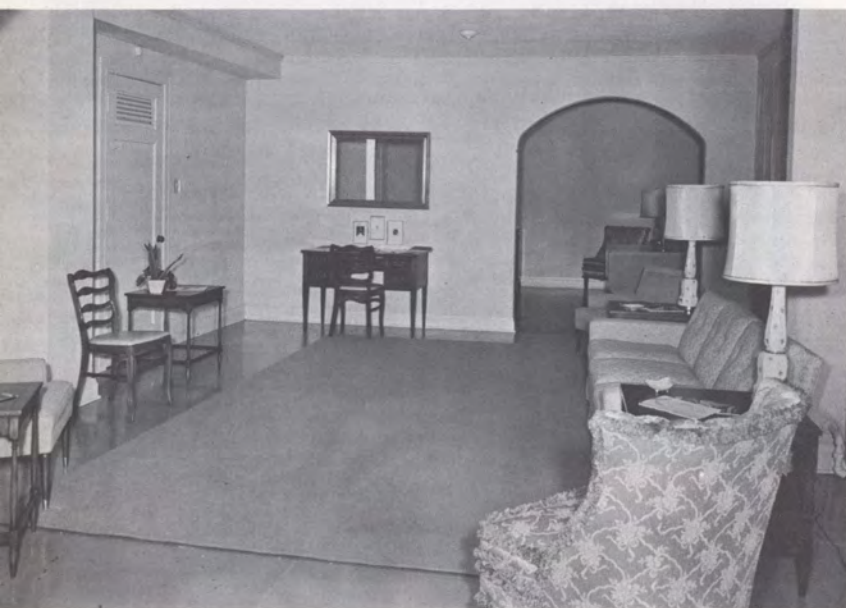


THE CHORUS LINE FOR CLUB ATD PERFORMED THE CAN-CAN AND SOLD FAVORS.





FRONT ROW: SANDY REMMERS, ADVISOR MISS MARQUARDT, MARY SIEVERT, MARCIA SHOEMAKER. BACK ROW: NANCY BAYNE, SALLY SOKOL, ROSEMARY JONES, SUE CAUGHEY.



The Sigma Kappas started rush with high hopes for gaining twelve pledges; national's designated number enabling them to gain their charter. In October eight girls were pledged and they looked forward to open rush for gaining our remaining quota.

Several Sigma Kappas represented their sorority at the Greek Dance November, Friday 13.

December 12, a Christmas caroling party was held with the TKE's during which Lutheran Hospital and Cherry Lawn Nursing home were visited.

The pledges had a big turn out at their after-the-game dance in the student union December 19.

Shortly after Christmas vacation the province president, Mrs. Roberts, informed them that because of membership difficulties, the colony would be dissolved. But they were encouraged by the fact that when enough interest in Greek life had been cultivated, Sigma Kappa would have priority to come back again.

Also in January they enjoyed themselves at the TKE house for dinner.

Although disheartened, they decided to use the remaining money in the treasury to go out with a bang and so continued with plans for the Queen of Hearts Dance, which was a big success with many attending.

A Sigma Kappa was chosen Greek Queen.





THE SIGMA KAPPAS PLANNED, DECORATED, AND "BLEW" THEIR TREASURY TO PUT ON THE ANNUAL QUEEN OF HEARTS DANCE AT THE UNION. BELOW: AT RUSH PARTY SANDY REMMERS TEACHES GIRLS SONGS OF SORORITY LIFE AS ONLY ELOISE CAN TELL THEM.





## DELTA SIGMA PHI



FRONT ROW: LARRY DOMINO, ROBERT MENTOR, ROBERT GOURLEY, ROBERT HUISENGA, BARRY BORLAND, JACK WEISENSEE. SECOND ROW: DAN LUNDY, GRAHAM GOULD, DICK SLATER, DAN MATHER, DENNIS JENSEN, BRUCE KOLBE, CAL BENZ. BACK ROW: NORBERT PATTERSON, TERRY THOGERSON, REGGIE HUTCHINSON, DAVE BIESEMEYER, GARY ANDERSON, ADVISOR WILLIAM EBERLE, CHUCK GLASS, RUSSELL SHAW, SCOTT MORTON, GENE OLSON. MISSING ARE MARTIN CHAPMAN AND BILL BURGGRAAF.



OFFICERS: DAVE BIESEMEYER, PRESIDENT; REGGIE HUTCHINSON, TREASURER; SCOTT MORTON, SERGEANT AT ARMS; NORBERT PATTERSON, SECRETARY; CHUCK GLASS, VICE-PRESIDENT.

With spirit the Delta Sigs opened the first full year as a newly organized group. Mr. William Eberle, acting as "housefather", assisted tremendously in organizing the new body and finding a new home. To start off with a bang, the Delta Sigma Phi candidate, Mary Louise Lundquist, was crowned homecoming queen. Socially speaking many exchanges and house parties were held, including a Halloween costume exchange with the ADPi's and a toboggan party with the D.Z.'s. The Carnation Ball highlighted the season. As an Olympic team, they grabbed the 1st place trophy during Greek Week. The men were active in all intramurals and in varsity sports. Terry Thogerson and Dan Mathers were starters in varsity basketball, Dick Slater made the varsity 11, and Scott Morton ran off with the high-point-winner trophy in track. Dan Lundy was editor of Perspectives and named chairman of Religious Emphasis Week 1961.





THE CARNATION BALL HELD AT THE CONVAIR ROOM WAS A REAL SUCCESS, LAUNCHING THE YEAR'S SOCIAL ACTIVITIES.



DELTA SIGMA PHI DREAM GIRL  
**Peggy Crewdson**



THE GROUP HAD A COSTUME PARTY EXCHANGE WITH THE ALPHA DELTA PI SORORITY.

THE MEN JOINED UP WITH THE DZ PLEDGES TO HOST RUSHEES AT A SMOKER.

THE BIG STEP WAS MADE . . . THEY FOUND A HOME AT 1200 MORNINGSIDE AVENUE AND ALL MEMBERS MOVED IN LAST FALL.





## SIGMA PHI EPSILON



FRONT ROW: RON BOULDEN, PAUL APPEL, MIKE WILSON, NATHAN WILSON, STEVE SOELBERG. SECOND ROW: STAN VAN VLIET, DUANE SKAFF, RON BOURRET, HOUSEMOTHER MRS. MARY MOSS, DICK WATT, CLYDE KRAUSE. THIRD ROW: ADVISOR ROBERT MILLER, BOB HARWARD, CRAIG CROSTON, WALLY DELZELL, AL PETERSON, GARY STREIT. BACK ROW: JOHN PECAUT, JOHN DEVRIES, JACK WARNER, BOB JOHNSON, GARY JOHNSON, GARY HARWARD, DICK FLEWELLING, FRED EVANS.



OFFICERS FOR 1960-1961: STAN VAN VLIET, SECRETARY; CLYDE KRAUSE, COMPTROLLER; RON BOURRET, PRESIDENT; DICK WATT, VICE-PRESIDENT; DUANE SKAFF, HISTORIAN.



3507 PETERS AVENUE



The Sig Eps were anxious to return to school this fall to view their "new" home and begin the task of redecoration. First to be painted: the red door. Next: second place homecoming house decoration. A strong Mothers and Wives club purchased new drapery and accessories to enhance the interior.

Prominent on the social calendar was the 12th annual Club ATD. It was April in Paris held at the Shore Acres ballroom. The Sig Ep candidate, Linda Williams, was crowned Queen of Hearts. Other events of the year included a Hallowe'en costume exchange, Christmas party, Spring formal, house parties and picnics. Each summer the Sig Eps support a camp for under privileged boys.



SIGMA PHI EPSILON SWEETHEART  
**Mary Stachour**



ABOVE PHOTO: FOR ONE APRIL EVENING THE SIG EPS BROUGHT THE AUDIENCE TO PARIS. BELOW: PUNCH WAS SERVED BY MOTHER MOSS AT THE DZ EXCHANGE. TOP RIGHT: THE GIFT EXCHANGE IS A TRADITION AT THE ANNUAL CHRISTMAS HOUSE PARTY. AT RIGHT: THE SIG EPS PULLED HARD, WON THE TUG, BUT LOST IN THE FINALS DURING GREEK WEEK.





## TAU KAPPA EPSILON



FRONT ROW: JOE CARPENTER, WALT MILLER, LEE JENSEN, BURT LINSKOTT, JERRY BIRDSALL. SECOND ROW: JOHN LEM-KUIL, RUSSELL BLANCHFIELD, DR. BENJAMIN, HOUSEMOTHER MRS. THELMA SORENSON, TED TIEMENS, CHUCK McELWAIN, DOUG BROWN. BACK ROW: WALLY SPIEGEL, DARYL PALS, BILL JOHNSON, LYNN SORUM, BOB BELL, TOM GWINN, JIM PARDEN, ROGER SOUKUP, JIM McDONALD, LARRY SORENSON, LANNY MAYCOCK.



OFFICERS: BILL JOHNSON, TREASURER; LARRY SORENSON, CHAP-LAIN; BOB BELL, SECRETARY; WALLY SPIEGEL, VICE-PRESIDENT; RUSS BLANCHFIELD, PLEDGE TRAINER; TED TIEMENS, PRESIDENT; LYNN SORUM, SERGEANT-AT-ARMS; JIM McDONALD, HISTORIAN.

The Tekes opened an active year socially, with many fraternity functions mixed with sorority exchanges. Outstanding in the calendar of events: the many all-school dances . . . The Beatnik Ball, the annual Ladies Knight Dance, and another knight was chosen in Ted Tiemens . . . dubbed ADPi Man of the Year, then more trophies were brought home for 1st place Agora Carnival booth and another Dean's fraternity scholarship trophy.





3921 ORLEANS AVENUE



TAU KAPPA EPSILON SWEETHEART  
Sharon Swanson

MRS. BENJAMIN DUBBED KEN  
WOLFSWINKLE LADIES' KNIGHT AT  
THE ANNUAL AFFAIR SPONSORED  
BY THE FRATERNITY. LANNY  
MAYCOCK EMCEED.



THE TEKES HELD A  
BEATNIK BALL WTH  
ALL SORTS OF  
INDIVIDUALS IN WIERC  
COSTUMES.



THE PI'S DINED AND  
WERE ENTERTAINED  
AT AN EXCHANGE.







## PANHELLENIC COUNCIL

FRONT ROW: MARY SIEVERT, ADVISORS MISS MARQUARDT, MISS TIFT, MRS. BENJAMIN, MARY LYNN MOSSENGREN. BACK ROW: SANDY REMMERS, KAY CONOVER, PEGGY CREWDSON, JOANN SRB, MARY LOUISE LUNDQUIST, MARCIA SHOEMAKER.

## INTERFRATERNITY COUNCIL

DAVE BIESEMEYER, WALLY SPIEGEL, DAN LUNDY, BRUCE KOLBE, CLYDE KRAUSE, RON BOURRET, DEAN GRIEGG.





# Activities











DAZED STUDENTS TURNED OUT EARLY FOR THE MORNING MEETING OF LADS' LEADERSHIP WORKSHOP AT THE OLD BARN.



MEMBERS OF LADS DISCUSSED DR. UEMURA'S SPEECH WITH HIM.

## A NEW YEAR . . . NEW FACES . . .



UPPERCLASS LEADERS PLOTTED THE COURSE OF THE YEAR . . .

WHILE FRESHMEN LABORED . . .

PARENTS AND FRESHMEN MET THE BRASS, NIBBBLED COOKIES.

MAROON BEANIES IN PLACE, THEY BEGAN THE LONG HOURS OF TESTING.







MORNINGSIDE'S CHRISTIAN FELLOWSHIP ENTERTAINED THE NEW STUDENTS ON PRESIDENT PALMER'S LAWN.

WE WELCOMED THE FRESHMEN  
WITH PICNICS . . .



AGORA BIG AND LITTLE SISTERS KNEW ENOUGH TO  
COME IN OUT OF THE RAIN AT LEAST.



AND MORE PICNICS . . .

THE STUDENT COUNCIL FED US.

FRESHMEN WERE INTRODUCED TO MORNINGSIDE ORGANIZATIONS VIA LOUDSPEAKER AT  
THE ALL-SCHOOL PICNIC.







BUT IT WAS A NICE DAY TO STAND OUTSIDE

LONG LINES TO STAND IN . . .



DID SOMEBODY SAY REGISTRATION WOULD BE MORE EFFICIENT THIS YEAR?



PRESIDENT KAY CONOVER INTRODUCED  
NEW WOMEN STUDENTS TO MISS  
DIMMITT.

AND AGORA MEMBERS TOOK THEIR  
LITTLE SISTER TO TEA . . .

THE RECEIVING LINE GREW  
AND GREW.







THE OSAGES PLOTTED THEIR SKIT AT BUSHYAGER'S HOME.



AMY TAKATA WARMED UP FOR FRESHMAN TALENT SHOW TRYOUTS BEFORE ADMIRING FELLOW FRESHMEN.



THE DEAN'S PARTY MEANT MIXERS

THE FRESHMEN  
WENT TO THE DEAN'S PARTY . . .

AND A PRIZE FOR THE OMAHA  
TRIBE AND THEIR SKIT.







A D PI'S HAD A HAT PARTY. DZ'S SENT RUSHEES TO THE CIRCUS, AND THE SIGMA KAPPAS TURNED THEIR HALL INTO A DESERT ISLAND.



## FRATERNITY & SORORITY RUSHING WAS A WHIRL...

THE COVETED MOMENT: THE DELTA SIGS PUT ON A PLEDGE PIN.

TEKES ENTERTAINED WITH HYPNOSIS.





# HOMECOMING 1959 . . .



1958 FRESHMAN QUEEN, CAROL PATTON, CROWNED SHARON REINKE.



GLORIA ROGALLA, DE MADSEN, SHARON REINKE, AND BARBARA HENSHAW.

## THE PEP RALLY RALLIED PEP . . .

A LONG, FAST SNAKE DANCE ENDED IN THE MEN'S DORM LOUNGE.



THE MEN'S DORM BEAT THE FRESHMEN UP THE GREASED POLE.







NANCY BIRKBECK, ESCORT LOREN ANDREWS: SHARON SWANSON, ESCORT GARY RITZ: PRESIDENT PALMER:  
MARY LOUISE LUNDQUIST, ESCORT CARL GUSTAFSON: CHRISTY MATHIASON, ESCORT DON MANKENBERG:  
MARY STACHOUR, ESCORT CRAIG CROSTON.

## HIGH POINT OF THE WEEKEND: THE HOMECOMING DANCE

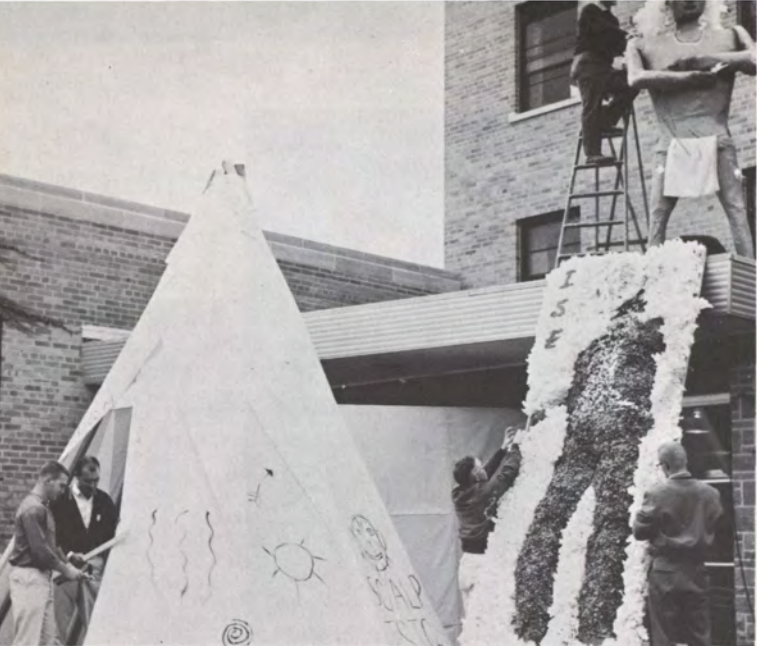
THE CROWNING MOMENT: PRESIDENT  
PALMER AND MARY LOUISE



A PHI MU COMBO PROVIDED MUSIC.







WE DECORATED . . .

DORM RESIDENTS PASSED THROUGH A TEEPEE TO GET TO CLASS. A FIRST PLACE TROPHY MADE IT WORTH IT. I. S. E. DISPLAY TOOK THIRD PLACE.



THE SIG EP DISPLAY WAS SECOND PRIZE WINNER.

DIMMMITT HALL WELCOMED THE TRIBE OF THE SIOUX.



MCF FORECAST DOOM FOR STATE TEACHERS.



ONE POOR TEACHER SPENT THE WEEKEND STRUNG UP.







CHANNEL 9 FEATURED MORN-  
INGSIDE AND HOMECOMING.

WE LISTENED . . .



THE TOURING CHOIR OF THE UNIVERSITY OF MUNSTER GAVE A SATUR-  
DAY AFTERNOON CONCERT.



THE SIG EPS RAN A LUCRATIVE  
"MUM AND BUTTON" BUSINESS.

AND WE CHEERED . . .

THE BIG MOMENT: THE STALWART WARRIORS WENT DASHING FORTH . . . TO VICTORY?  
OH, WELL, WHO WANTS A DAY OFF FROM CLASSES?





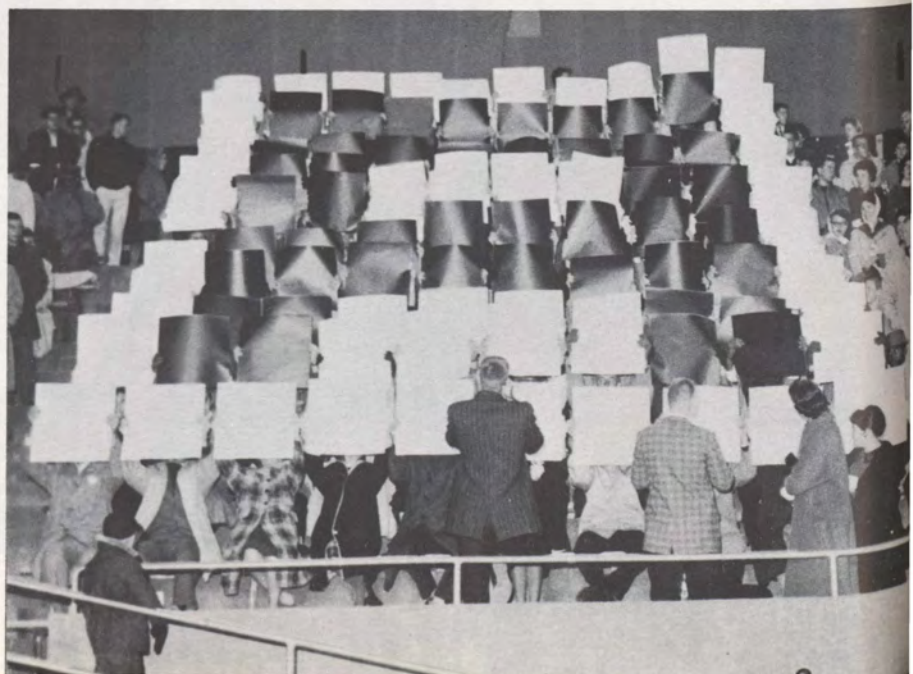


QUEEN MARY LOUISE . . .



A QUEEN AND PRETTY PRINCESSES . . .

A SALUTE FROM THE CARD SECTION







BAND DAY BROUGHT DOZENS OF BANDS TO BE DIRECTED BY DALE CARIS.

AUTUMN MEANT MARCHING BANDS . . .

AND COSTUME PARTIES . . .



HALL SKITS TERRIFIED DIMMITT HALL RESIDENTS.



FRATERNITES AND SORORITIES "EXCHANGED" AT HALLOWEEN.

THE TEKES THREW AN ALL-SCHOOL BEATNIK BALL.





THANKSGIVING . . . THE FACULTY RECEPTION . . .



FACULTY WIVES SERVED PUNCH.



STUDENTS SHOOK HANDS WITH ADMINISTRATION . . .

AND CHATTED WITH FACULTY.







UPPERCLASSWOMEN TRIMMED DIMMITT HALL'S TREE . . . WITH GARLANDS OF POPCORN MADE BY THE FRESHMEN.

## AND THEN IT WAS CHRISTMAS . . .

THERE WERE CAROLING PARTIES . . .



AND THE STUDENT COUNCIL'S CHRISTMAS FORMAL.

FRANK LANGE DONNED WHITE COTTON BEARD FOR A FRATERNITY PARTY.







SANTA CLAUS, ALIAS PAT TAYLOR, ENTERTAINED CHILDREN FROM THE BOYS' AND GIRLS' HOME.

## CHRISTMAS MEANT PARTIES FOR AGORA...



THE BOYS AND GIRLS MADE FRIENDS WITH AGORA MEMBERS.



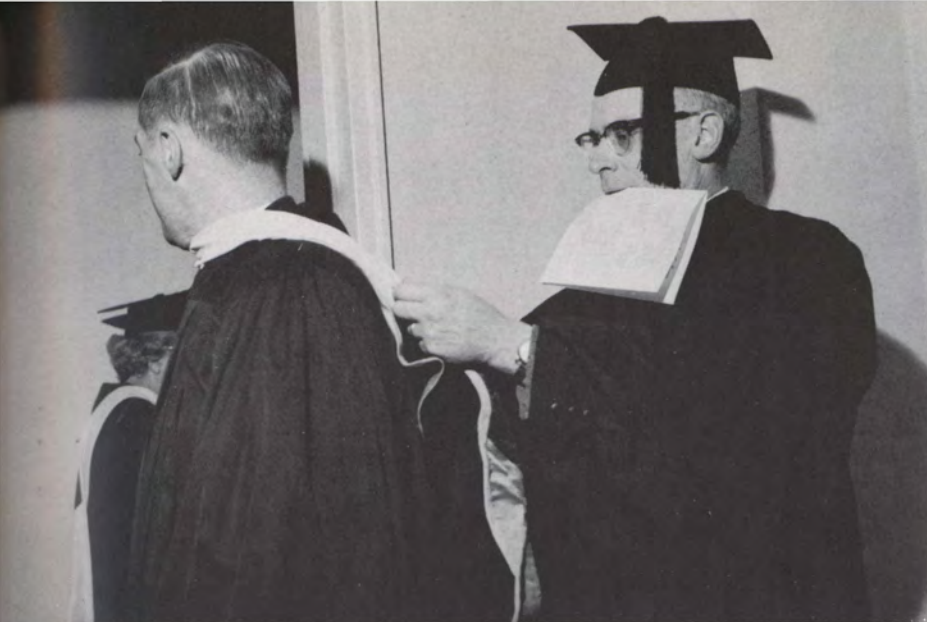
TOWN GIRLS WERE INVITED TO DIMMITT HALL'S CHRISTMAS DINNER.

## AND FOR THE DORMS...

THE MEN'S DORM COMBINED AN OPEN HOUSE AND A CHRISTMAS DANCE.





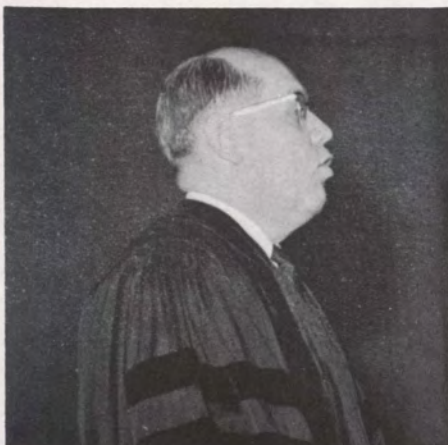


AN ACADEMIC PROCESSION CALLS FOR BACK-STAGE ADJUSTMENTS.



THE LIBERAL ARTS GRADUATES STOOD TO RECEIVE THEIR DEGREE.

VANCE ROGERS, PRESIDENT OF NEBRASKA WESLEYAN, SPOKE TO GRADUATES AND STUDENTS.



A PROUD MOMENT: MRS. J. RICHARD PALMER WAS INITIATED INTO THE TRIBE OF THE SIOUX WITH OTHER GRADUATES.







THE LAST STOP IN THE LINE WAS THE WORST—THE BUSINESS OFFICE.

WE HAD THE  
REGISTRATION BLUES AGAIN...



LADS ENTERTAINED NEW STUDENTS.



MCF CHASED CARES AT A BOX SOCIAL.



MRS. THORA PHELPS TOOK OVER DEAN'S DUTIES.







THE AGORA LEADERSHIP DINNER HONORED MISS BERTHA WELLHAUSEN, A BRIAR-CLIFF COLLEGE FACULTY MEMBER.

## MORNINGSIDE WOMEN WENT TO DINNERS...

NORMA ZIMMER, A MEMBER OF DIMMITT HALL'S HOUSE COUNCIL, PLAYED A RECORDING OF MISS DIMMITT'S BIRTHDAY PARTY FOR HER IN HER HOME.







THE TOUR MEMBERS GATHERED ON THE STEPS OF THE CAPITOL.

## STUDENTS IN FAR PLACES...

### WASHINGTON TOUR



JOAN ROLFS AND JUDY MARSH MET CONGRESSMAN HOEVEN.



MR. VITTAL CAUGHT A FEW WINKS EN ROUTE.



STUDENTS ON THE MOVE: IN GERMANY AND GREECE.

### EUROPEAN TOUR

DR. AND MRS. BENJAMIN GATHERED WITH THEIR TOUR MEMBERS AND WAITERS ON SHIPBOARD.







BOB RAY, ANNETTE KNUDSON, LEONARD BIRCHER, LINDA WILLIAMS, DEAN GREIGG, PEGGY CREWDSON, DICK SLATER, SUE McMURRAY, AL ANDERSON.



SIG EP CANDIDATE LINDA WILLIAMS WAS CROWNED QUEEN OF HEARTS.

## HEARTS AND FLOWERS . . .

Sigma Kappa sponsored the annual Queen of Hearts dance.







THE WEEK STARTED WITH A SQUARE DANCE.

## THE HIGH POINT OF MONTHS OF WORK...

## RELIGIOUS EMPHASIS WEEK

REV. ALBERTSON SPOKE TO  
AN ALL-SCHOOL CONVOCA-  
TION.



COMMITTEE HEADS AND ADVISORS GATHERED WITH SPEAKERS  
REV. CYRUS ALBERTSON AND MR. MILBURN AKERS.

### Co-Chairmen:

Nancy Lewis  
Warren Conner

### Committee Chairmen:

Rosalee Sprout  
Dan Lundy  
Mary Ehrhardt  
Ann Burgeson  
Judy Haas  
Steve Pohlman  
Nancy Taylor

### Advisors:

Dr. Sellen  
Dr. Morrison  
Mr. Phelps  
Dr. Hines  
Mr. Johnson  
Mr. Nelson  
Mr. Yockey  
Dr. Gingerich







STUDENTS TREKKED TO CHAPEL TO HEAR THE DISTURBING QUESTION WHICH WAS THE THEME OF THE WEEK.



FACULTY MET STUDENTS FOR DISCUSSION IN FACULTY HOMES.

GRACE METHODIST CHURCH WAS THE SETTING FOR T. S. ELIOT'S EXPERIMENTAL DRAMA, "MURDER IN THE CATHEDRAL."





# CARNIVAL CAPERS...



DEAN GRIEGG CROWNED JEANINE ARNOLD AND LOREN ANDREWS PRINCESS AND PRINCE OF AGORA CARNIVAL.

BEATNIK ENTERTAINERS DREW A CROWD TO THE DZ FOLLIES.



THE PRIZE-WINNING TEKE BOOTH DREW THE KIDDIES TO PLAY ROULETTE WITH WHITE MICE.



MR. PHELPS TESTED HIS STRENGTH, BUT MISSED THE GONG—SLIGHTLY.

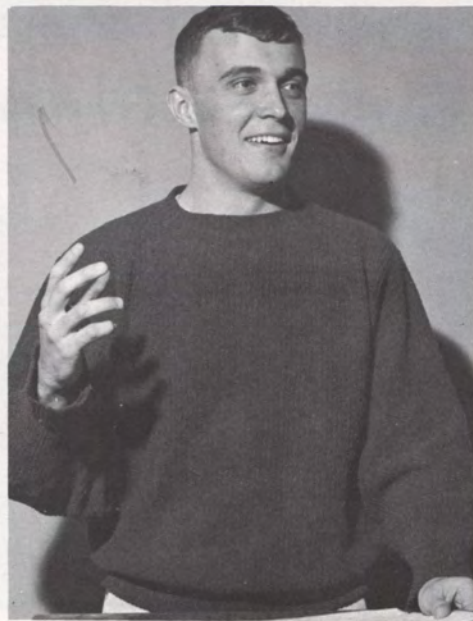




HONOR SYSTEM . . .  
 WE THOUGHT,  
 WE TALKED,  
 WE VOTED . . .



INTEREST IN THE HONOR SYSTEM STARTED AT THE FALL LEADERSHIP WORKSHOP.



DIANE HUNTSINGER AND LOREN ANDREWS TOOK FIRST PLACE HONORS IN THE ALL-SCHOOL SPEECH CONTEST ON ACADEMIC HONESTY.

WE MET A PLAYWRIGHT . . .

JOSEPH KRAMM, AUTHOR OF THE SHRIKE, TALKED WITH SPEECH TEACHERS AND STUDENT BODY.







RON STONE  
ADDRESSED DELEGATES.

## RACE RELATIONS SEMINAR . . . WE WERE HOSTS . . .



DELEGATES CAME FROM THE SOUTH TO GIVE THE SOUTHERN  
VIEWPOINT PROBLEMS.



DR. GINGERICH TOOK PART IN A PANEL DISCUSSION.

## PHI CHI THETA WAS INSTALLED . . .

THE LOCAL BUSINESS  
WOMEN'S ASSOCIATION AF-  
FILIATED WITH THE NA-  
TIONAL PROFESSIONAL SO-  
RORITY.







SPRING BROUGHT DANCES WITH  
NIGHTCLUB ATMOSPHERE...  
SINFONIAN INN AND CLUB ATD



ENTERTAINMENT FOR CLUB ATD: A DELTA  
ZETA CHORUS LINE, THE FOUR NUBBINS,  
HOMER AND JETHRO. DICK WATT WAS  
EMCEE.







## SPRING CONVOCATION:

### A FOREIGN CORRESPONDENT . . .



WILLIAM SHIRER, JOURNALIST, FORMER IOWAN, AUTHOR OF THE BERLIN DIARY, SPOKE ON WORLD AFFAIRS.

### THERE WERE FORMALS AND SENIOR ACTIVITIES . . .



THE SENIORS WERE THE HONORED GUESTS, THE FACULTY WERE THE HOSTS, AND EVERYONE ENJOYED THE DINNER AND ENTERTAINMENT IN A SHOWBOAT THEME.





STUDENTS HELD OPEN HOUSE . . .

## SCIENCE EXPOSITION . . .

MORNINGSIDERS DEMONSTRATE LITTIE HOWIE AN AUTHENTIC GASOLINE-POWERED MILITARY TANK CONSTRUCTED IN THE PHYSICS DEPARTMENT. DICK STEIMKE LETS MARY ERHARDT PET ONE OF THE RATS USED IN THE PSYCHOLOGY DEPARTMENT EXPERIMENT. DAVE OTTO ILLUSTRATES INTERNAL AND EXTERNAL COMBUSTION ENGINES.



MORNINGSIDE'S SCIENCE STUDENTS PRESENTED THE 33RD SCIENCE EXPOSITION APRIL 28 AND 29. SIX DEPARTMENTS DEMONSTRATED PROJECTS TO A LARGE CROWD.

CHARLENE WILMARTH TAKES A YOUNG LADY'S BLOOD TYPE. JOHN BRUMAS EXPLAINS THE KYMOGRAPHICAL HEART CONTRACTIONS OF A FROG. BOB MENTOR PRESENTS AN EXPLANATION OF ALCOHOL IN THE BLOOD.





## HONORS CHAPEL . . .

### WE HONORED ACADEMIC ACHIEVEMENT



DIANE BUSHYAGER RECEIVED  
THE LASS SOPHOMORE CUP.

Lass organization sponsored the annual Honors Day Chapel. The student council was installed, and many academic honors were given. Lass honored Diane Bushyager with the Sophomore Cup and named Mr. Robert Meloy as teacher of the year. New members of Lass and Lads were tapped.

ALPHA DELTA PI AND TAU  
KAPPA EPSILON CARRIED OFF  
SCHOLASTIC HONORS AMONG  
THE GREEK ORGANIZATIONS.





# Royalty











GREEK QUEEN

*Marcia Shoemaker*





SIOUX QUEEN

*Sharon Swanson*



SIOUX QUEEN ATTENDANTS

*Elaine Carter*



*Sue McMurray*



*Christy Mathiasen*



*Peggy Crewdson*





HOMECOMING QUEEN

*Mary Louise Lundquist*



HOMECOMING QUEEN ATTENDANTS

*Mary Stachour*



*Christy Mathiasen*



*Sharon Swanson*



*Nancy Birkbeck*





QUEEN OF HEARTS

*Linda Williams*



QUEEN OF HEARTS ATTENDANTS

*Peggy Crewdson*



*Annette Knudson*



*Sue McMurray*





MAY QUEEN

*Bonnie Anderson*



*Sandra Burns*



*Sharon Reinke*



MAY QUEEN ATTENDANTS



*DeAnne Madsen*



*Sally Comfort*



## JUNE GRADUATES

**ALBERT ALLAN ANDERSON:** B.A.; WHO'S WHO; RELIGION IN LIFE COMM.; COLLEGIAN REPORTER EDITOR; PERSPECTIVES; TAU KAPPA EPSILON HOUSE MANAGER; PLAY CASTS; FORENSICS; ALPHA PSI OMEGA VICE-PRES.; KAPPA DELTA; OUTSTANDING STUDENT IN ENGLISH.

**CONNIE SPROUL BARTZ:** B.A.; KAPPA CHI; METHODIST ST. MOVEMENT; RELIGION IN LIFE COMM.; AGORA.

**HARVEY BARTZ:** B.A.; STUDENT COUNCIL; WHO'S WHO; MEN'S DORM COUNCIL; INTRAMURALS; KAPPA CHI PRES.; DEPUTATION TEAM CHAIRMAN; METHODIST ST. MOVEMENT; RELIGION IN LIFE COMM.; RELIGIOUS LIFE COUNCIL; C. R. STAFF; MASTER'S MELODIERS; LADS PRES.; SIGMA TAU DELTA; DEAN'S HONOR ROLL.

**JULIA KEYS BEDELL:** B.M.E.; BIOLOGY CLUB SECRETARY; HOME EC CLUB; MU PHI EPSILON HISTORIAN; PRESIDENT; BAND; CHAIR; MADRIGAL; C. R. STAFF; AGORA PRINCESS ATTENDANT; SIOUX QUEEN ATTENDANT; LASS VICE-PRESIDENT; PLAY CASTS; DEAN'S HONOR ROLL.

**ROLAND BRUCE BEDELL:** B.S.; STUDENT COUNCIL; TENNIS; BIOLOGY CLUB PRESIDENT; CHEMISTRY CLUB; PHI MU ALPHA SECRETARY; BAND; MADRIGAL; CHAMBER ORCHESTRA; LADS; OUTSTANDING STUDENT IN BIOLOGY; DEAN'S HONOR ROLL.

**DAVID BIRCHER:** B.M.E.; WHO'S WHO; PHI MU ALPHA PRES.; WARDEN; BAND; CHAIR; S.C. SYMPHONY; WOODWIND ENSEMBLE; BRASS ENSEMBLE; LADS; AGORA PRINCE ATTENDANT.

**MARVIN L. BOBB:** B.A.

**EDWIN K. BRADLEY:** B.S.

**FRED B. BROWN:** B.S.; ISEA.

**KAY K. BROWN:** B.S.; DELTA ZETA; MAJORETTE; ISEA; AGORA; DEAN'S HONOR ROLL.

**HAROLD BRUCE:** B.A.

**DIANA KAY BURG:** B.S.; STUDENT COUNCIL; WHO'S WHO; DORM COUNSELOR; C. R. STAFF; DELTA ZETA VICE-PRES.; GREEK COUNCIL; ISEA; CHEERLEADER AGORA; LASS.

**ANN LUCILLE BURGESSON:** B.A.; DORM COUNSELOR; KAPPA CHI; MCF TREASURER; CHAIR; C. R. STAFF; ISHKOODAH; AGORA.

**CARL CARLSON:** B.S.

**G. ROBERT CARLSON:** B.S.

**KENNETH LERAY CARTER:** B.S.; FOOTBALL; "M" CLUB.

**HOWARD F. CASH:** B.S.

**BEVERLY ANN CASPERSON:** B.S.; CHEMISTRY CLUB; HOME EC CLUB VICE-PRES. SEC.; TREAS.; SIOUX STAFF; ISHKOODAH; ISEA; AGORA.

**DAVID D. CHAPMAN:** B.S.

**MARTIN R. CHAPMAN:** B.S.

**WARREN J. CONNER:** B.A.; KAPPA CHI PRES.; VICE-PRES.; RELIGION IN LIFE COMM. CO-CHAIRMAN.

**CARLO KAY CONOVER:** B.A.; JUNIOR CLASS TREASURER; WSGA; RELIGION IN LIFE COMM.; HOME EC CLUB; ALPHA DELTA PI. TREAS.; RECORDING SEC.

**WILLIAM WALLACE DELZELL:** B.A.; FRESHMAN CLASS PRES.; COLLEGIAN REPORTER BUSINESS MANAGER; SIGMA PHI EPSILON; ISEA PRES.

**LARRY GENE DOMINO:** B.A.; INTRAMURALS; DELTA SIGMA PHI SERGEANT-AT-ARMS.

**GENE DOW:** B.A.; C. R. STAFF; SIGMA PHI EPSILON; ALPHA PSI OMEGA PRES.; PLAY CASTS.

**FRED CARLETON EVANS:** B.A.; SENIOR CLASS TREASURER; WHO'S WHO; RELIGION IN LIFE COMM.; BAND; SIOUX EDITOR; ASSOCIATE EDITOR; SIGMA PHI EPSILON HISTORIAN, SEC.; CIRCLE K; OUTSTANDING STUDENT IN ART; ISEA.

**FERN VENEKAMP FINERAN:** B.A.; DORM COUNSELOR; KAPPA CHI SEC.; METHODIST ST. MOVEMENT VICE-PRES.; RELIGION IN LIFE COMM.; MCF PUBLICITY CHAIRMAN; ISHKOODAH; AGORA.

**WILLIAM G. FREDERICK, JR.:** B.A.; TRACK; BASEBALL; INTRAMURALS; METHODIST ST. MOVEMENT; MCF; C. R. STAFF; COSMOPOLITAN CLUB; INTERNATIONAL RELATIONS CLUB PRES.

**EUGENE T. GIMER:** B.A.

**KENNETH C. GOECKE:** B.S.; BASEBALL; "M" CLUB; INTRAMURALS.

**ROBERT S. HAMMER:** B.A.; FRESHMAN CLASS VICE-PRES.; SOPHOMORE CLASS VICE-PRES.; JUNIOR CLASS PRES.; WHO'S WHO; INTRAMURALS; KAPPA CHI; RELIGION IN LIFE COMM.; KAPPA KAPPA EPSILON CHAPLAIN, SOCIAL CHAIRMAN; INTER-FRATERNITY COUNCIL; LADS TREAS.; AGORA PRINCE; CIRCLE K PRES.; PLAY CASTS; DEAN'S HONOR ROLL.

**NANCYLEE HANSON:** B.A.; SOCIOLOGY CLUB; DEAN'S HONOR ROLL.

**KEA HEESCH:** B.A.; ISEA; AGORA.

**HERBERT H. HARRIS, JR.:** B.S.

**HOWARD E. HOLDCROFT:** B.S.

**JERRY MONROE HOUP:** B.A.; TENNIS; "M" CLUB; PHI MU ALPHA SEC.; BAND; PLAY CASTS.

**RODNEY JISKOOT:** B.M.E.; PHI MU ALPHA SEC.; HISTORIAN; BAND; CHAIR; CHORUS; S. C. SYMPHONY; MADRIGAL; ISEA; DEAN'S HONOR ROLL.

**WILLIAM FRANCIS JOHNSON:** B.A.; INTRAMURALS; BIOLOGY CLUB; TAU KAPPA EPSILON, SECRETARY, TREASURER.

**RAYMOND KIEL:** B.S.

**DARYL LEE KOHNKE:** B.S.; BASEBALL; BASKETBALL; "M" CLUB.

**BRUCE MERLIN KOLBE:** B.A.; INTRAMURALS; AIA; DELTA SIGMA PHI SECRETARY.

**GARY DEAN KOLBECK:** B.S.; BASKETBALL; INTRAMURALS; "M" CLUB PRESIDENT.

**MARY LOUISE LUNDQUIST:** B.S.; SENIOR CLASS SEC.; HOMECOMING QUEEN; SIOUX QUEEN ATTENDANT; DELTA ZETA PRESIDENT; PANHELLENIC AND GREEK COUNCIL; ISEA; CHEERLEADER; AGORA BOARD; AGORA PRINCESS ATTENDANT.

**BETTY A. MADSEN:** B.S.; WSGA SECRETARY; DORM COUNSELOR; WAA; ALPHA PSI OMEGA; ISEA; AGORA SECRETARY; PLAY CASTING COMMITTEE.

**KATHERINE LOUISE MAJOROWICZ:** B.S.; WHO'S WHO; RELIGION IN LIFE COMMITTEE; MCF; HOME EC CLUB PRESIDENT; CHAIR; LASS PRESIDENT; ISEA; AGORA BOARD; PLAY CASTS; DEAN'S HONOR ROLL.

**RONALD HERBERT MALCHOW:** B.A.; INTRAMURALS; ALPHA PSI OMEGA; PLAY CASTS.

**CHRISTY ANN MATHIASSEN:** B.S.; STUDENT COUNCIL SECRETARY; WHO'S WHO; WSGA SECRETARY; ISEA TREASURER; BUSINESS WOMEN'S CLUB PRESIDENT; SIOUX QUEEN ATTENDANT; HOMECOMING QUEEN ATTENDANT; LASS MEMBERSHIP CHAIRMAN; ALPHA LAMBDA DELTA; ISEA REGIONAL SECRETARY-TREASURER; DEAN'S HONOR ROLL.

**GERALD McMANIS:** B.S.; SIGMA PHI SIGMA; OUTSTANDING STUDENT; DEAN'S HONOR ROLL.

**AVALEE JEAN METCALF:** B.S.; ISEA; BUSINESS WOMEN'S CLUB; DEAN'S HONOR ROLL.

**RONALD MICEK:** B.S.; INTRAMURALS.

**GARY MITCHELL:** B.S.; INTRAMURALS; BIOLOGY CLUB; CHEMISTRY CLUB; C. R. STAFF; ISEA; PLAY CASTS.

**CAROL ANNE NICKEL:** B.M.; DORM COUNSELOR; MU PHI EPSILON VICE-PRESIDENT AND PRESIDENT; CHOIR; DEAN'S HONOR ROLL.

**SALLY MADISON NIEBUHR:** B.S.; HOME EC CLUB; QUEEN OF HEARTS ATTENDANT; ISEA SECRETARY-TREASURER; AGORA VICE-PRESIDENT; SIGMA PHI EPSILON SWEETHEART.

**CAROLE VANWYNGARDEN OLESON:** B.A.; CLASS OFFICER; WHO'S WHO; KAPPA CHI; RELIGION IN LIFE COMMITTEE CHAIRMAN; MCF; ALPHA DELTA PI; PI KAPPA DELTA PRESIDENT; SIGMA TAU DELTA; LASS TREASURER; ISEA; FORENSICS; DEAN'S HONOR ROLL.

**SANDRA PATRICK:** B.A.; WSGA CHAPLAIN; KAPPA CHI; MSM VICE-PRESIDENT; RELIGION IN LIFE COMMITTEE; MCF; ALPHA KAPPA DELTA; DEAN'S HONOR ROLL.

**DANIEL JOHN PETERS:** B.S.; INTRAMURALS; BIOLOGY CLUB; ISEA.

**DAVID JOHN PETERSEN:** B.S.; RELIGION IN LIFE COMMITTEE; MCF; BETA BETA BETA; BIOLOGY CLUB.

**CONSTANCE JOANNE PETERSON:** B.M.E.; WHO'S WHO; MU PHI EPSILON SECRETARY; BAND; CHAIR; FRESHMAN QUEEN ATTENDANT; LASS SECRETARY; ALPHA LAMBDA DELTA; ISEA; DEAN'S HONOR ROLL.

**HAROLD G. POPPEN:** B.A.; SENIOR CLASS VICE-PRES.; STUDENT COUNCIL; WHO'S WHO; MEN'S DORM COUNCIL; BASEBALL; "M" CLUB SECRETARY; INTRAMURALS; SIGMA PHI EPSILON VICE-PRESIDENT; LADS; AGORA PRINCE, ATTENDANT; CIRCLE K VICE-PRES.; DEAN'S HONOR ROLL.

**WILLIAM B. RIDOUT:** B.S.; STUDENT COUNCIL; MEN'S DORM COUNCIL PRESIDENT; WHO'S WHO; DORM PROCTOR; INTRAMURALS; BETA BETA BETA; BIOLOGY CLUB; CIRCLE K VICE-PRESIDENT; PLAY CAST; DEAN'S HONOR ROLL.

**TERRY THOMAS ROBERTS:** B.S.; SOPHOMORE CLASS PRES.; STUDENT COUNCIL PRESIDENT; WHO'S WHO; MEN'S DORM COUNCIL; DORM PROCTOR; FOOTBALL; "M" CLUB; INTRAMURALS; BIOLOGY CLUB; LADS.

**JOAN ALBERTA ROLFS:** B.S.; WAA; CHAIR; DELTA ZETA TREASURER; PHI CHI THETA; BUSINESS WOMEN'S ASSOCIATION; ISEA.

**KEITH CHARLES RUNDELL:** B.A.

**MARY ELIZABETH SIEVERT:** B.S.; WHO'S WHO; DORM PROCTOR; LSA SECRETARY; RELIGION IN LIFE COMMITTEE; BIOLOGY CLUB; CHEMISTRY CLUB; SIOUX STAFF; SIGMA KAPPA PRESIDENT, SECRETARY, TREASURER; ALPHA PSI OMEGA; PI KAPPA DELTA; AMERICAN CHEMICAL SOCIETY; ISEA; FORENSICS; PLAY CAST; CASTING COMMITTEE; STAGE MANAGER; DEAN'S HONOR ROLL.

**JACK LEE SOUTHWICK:** B.A.



**WILLIAM WALLACE SPIEGEL:** B.A.; JUNIOR CLASS VICE-PRES.; STUDENT COUNCIL; WHO'S WHO; KAPPA CHI VICE-PRESIDENT; MSM; TAU KAPPA EPSILON VICE-PRESIDENT; INTER-FRATERNITY COUNCIL; SIGMA TAU DELTA; ALPHA PSI OMEGA; LADS MEMBERSHIP CHAIRMAN; PLAY CASTS; FRESHMAN STEERING COMMITTEE; DEAN'S HONOR ROLL.

**ROSALEE JACOBSON SPROUT:** B.A.; SENIOR CLASS PRES.; FRESHMAN CLASS SEC.; WHO'S WHO; WSGA; DORM COUNSELOR; RELIGION IN LIFE COMMITTEES; BAND; CHOIR; COLLEGIAN REPORTER EDITOR; COLUMNIST; PERSPECTIVES ASSOCIATE EDITOR; THE SWEETHEART; ALPHA DELTA PI TREASURER; ISKHOODAH VICE-PRESIDENT; FORENSICS; PLAY CASTS; OUTSTANDING STUDENT IN SPEECH AND DRAMA AND ENGLISH; ALPHA PSI OMEGA; SIGMA TAU DELTA; ALPHA LAMBDA DELTA.

**JOANN DOROTHY SRB:** B.S.; LSA; DELTA ZETA PRESIDENT, SECRETARY; PANHELLENIC COUNCIL; ISEA.

**RONALD HENRY STONE:** B.A.; STUDENT COUNCIL; WHO'S WHO; DORM PROCUTOR; INTRAMURALS; KAPPA CHI; MCF PRESIDENT; VICE-PRESIDENT OF IOWA MSM; COLLEGIAN REPORTER MANAGING EDITOR; INTERNATIONAL RELATIONS CLUB VICE-PRESIDENT; LADS; PI GAMMA MU; PI KAPPA DELTA; FORENSICS; DEAN'S HONOR ROLL.

**JAMES T. UMBARGER:** B.S.; BASEBALL; INTRAMURALS; PHI SIGMA.

**CHARLES BURTON WILMARTH:** B.S.; STUDENT COUNCIL; WHO'S WHO; INTRAMURALS; BETA BETA BETA; BIOLOGY CLUB; ALPHA PSI OMEGA; LADS VICE-PRESIDENT; CIRCLE K; PLAY CASTS; OUTSTANDING STUDENT IN BIOLOGY; DEAN'S HONOR ROLL.

**LINDE LOU WOHLBERG:** B.M.E.; WHO'S WHO; WSGA PRESIDENT; MU PHI EPSILON SECRETARY; BAND; CHOIR, S. C. SYMPHONY; MADRIGAL; C. R. STAFF; ALPHA LAMBDA DELTA; MAJORETTE; ISEA; AGORA BOARD; AGORA PRINCESS ATTENDANT; LASS; DEAN'S HONOR ROLL.

**NORMA ZIMMER:** B.A.; WSGA; HOME EC CLUB; BAND; CHOIR; C. R. STAFF; ALPHA DELTA PI SECRETARY; ISEA; AGORA BOARD; PLAY CAST.

**NANCY BIRKBECK:** B.A.; SIOUX STAFF; HOMECOMING QUEEN ATTENDANT; DELTA ZETA; CHEERLEADER; AGORA PRINCESS ATTENDANT; ISEA.

**BILL BURGGRAAF:** B.A.; DORM COUNSELOR AND PROCTOR; BASEBALL; INTRAMURALS; SIOUX STAFF; DELTA SIGMA PHI.

**KAREN CAREY:** B.A.; WHO'S WHO; DELTA ZETA; MORNINGSIDE MEMO EDITOR; C. R. STAFF; AGORA SECRETARY; WSGA SECRETARY; ISEA.

## JANUARY GRADUATES

**JAMES D. COCHRANE:** B.A.; PI KAPPA DELTA SECRETARY; PI KAPPA GAMMA MU; ZETA SIGMA; DEBATE; DEAN'S HONOR ROLL.

**ROBERT E. DANNENBERG:** B.S.

**WAYNE GEORGE DAVID:** B.A.

**JAMES R. DOWNING, JR.:** B.A.

**RUSSELL JOHN FOLSOM:** B.A.; PI GAMMA MU; ISEA.

**LAWRENCE G. FORBES:** B.S.

**FREDERICK J. FREY:** B.S.

**JOHN DAVID GILBERT:** B.S.; INTRAMURALS; SIGMA PI SIGMA PRESIDENT; CHEMISTRY CLUB; PRE-ENGINEERS CLUB; TAU KAPPA EPSILON.

**RICHARD D. GUSTAFFSON:** B.S.; FOOTBALL; M CLUB.

**ROBERT J. HILGER:** B.A.

**DOLLIE DELFS HOWARD:** B.S.; HOME EC CLUB; ISEA.

**RONALD D. JOHNSON:** B.A.

**PHYLLIS MACKINTOSH KILLAM:** B.A.; CLASS OFFICER; WHO'S WHO; COLLEGIAN REPORTER; ALPHA DELTA PI PANHELLENIC REPRESENTATIVE; ALPHA KAPPA DELTA PRESIDENT; SIGMA TAU DELTA.

**DUANE F. LANGE:** B.A.; SIGMA PHI EPSILON.

**CLYDE JERRY MAGILL:** B.S.

**LARRY GENE MANKER:** B.S.

**THOMAS J. MILACKI:** B.S.; INTRAMURALS; BIOLOGY CLUB.

**KAREN JEANINE MILLER:** B.A.

**GARY LEE MOAD:** B.A.

**ROBERT F. MORGAN:** B.A.

**CHARLES L. MOUNTS:** B.S.; FOOTBALL; BASEBALL; "M" CLUB; INTRAMURALS.

**CHARLES W. PALMER:** B.A.

**RUTH SUMNER PALMER:** B.A.

**STANLEY KEITH PETERSON:** B.A.

**KEITH K. STRATTON:** B.S.

**GEORGE E. TAMMINGA:** B.A.; INTRAMURALS; RELIGION IN LIFE COMMITTEE.

**VICTOR JOSEPH VALEIKA:** B.S.

**ROBERT F. WALDO:** B.A.

## AUGUST GRADUATES

**CLAUDE W. BURRIS:** B.S.

**JANICE DEANN BUSHNELL:** B.S.; DEAN'S HONOR ROLL.

**ROBERTA B. COBAIN:** B.S.

**RICHARD D. FRY:** B.S.

**G. JUDSON GARWOOD:** B.S.; ACADEMIC INVESTMENT ASSOCIATION PRESIDENT; DEAN'S HONOR ROLL.

**ARLIS GIMER:** B.A.

**MARVIN R. KEIL:** B.A.

**RONALD W. KEMNER:** B.S.

**JAMES GRIFFITH KENNEDY:** B.A.

**AVIS ROOK KOHLKHOFF:** B.A.

**GLENN MCBURNEY:** B.A.

**DONALD CARL MILLER:** B.S.; FOOTBALL; TRACK; BASEBALL; BASKETBALL; "M" CLUB; INTRAMURALS.

**JOHN GILBERT MOOK:** B.A.; PLAY CAST.

**ALBERT E. QUILLEASH:** B.A.

**STANLEY ELIOT ROCKLIN:** B.A.

**PAUL HERBERT SOUPE:** B.S.

**LOIS PAULINE SCHUBERT:** B.A.

**JOANNE SCHNELL:** B.A.; WSGA; METHODIST STUDENT MOVEMENT; ALPHA DELTA PI CHAPLAIN, AND ASSISTANT TREASURER; SIGMA TAU DELTA; ALPHA LAMBDA DELTA; ISEA SECRETARY; DEAN'S HONOR ROLL.

**LESLIE PHILIP STEFFE:** B.S.

**GWYNETH J. STEPHENSON:** B.A.

**PATRICIA GEBRAN THIBODEAU:** B.A.

**ROBERT WALKER:** B.A.

**HAZEL BELLE WATJE:** B.A.



















