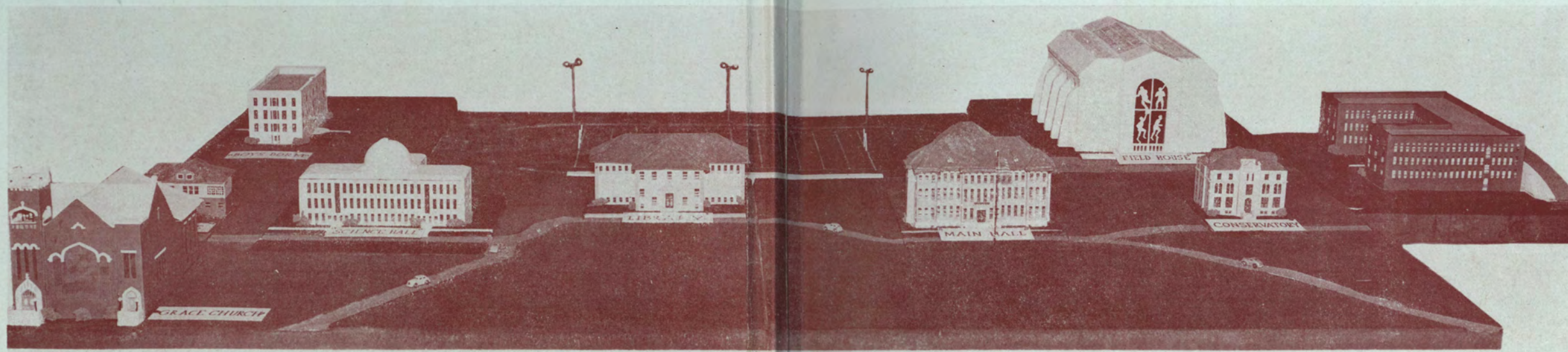




1942

S I O U X



MORNINGSIDE OF TOMORROW

The
SIOUX
of 1942



Editor

Helen Johnson

Business Manager

Raymond Gusteson

Faculty Adviser

Jason M. Saunderson

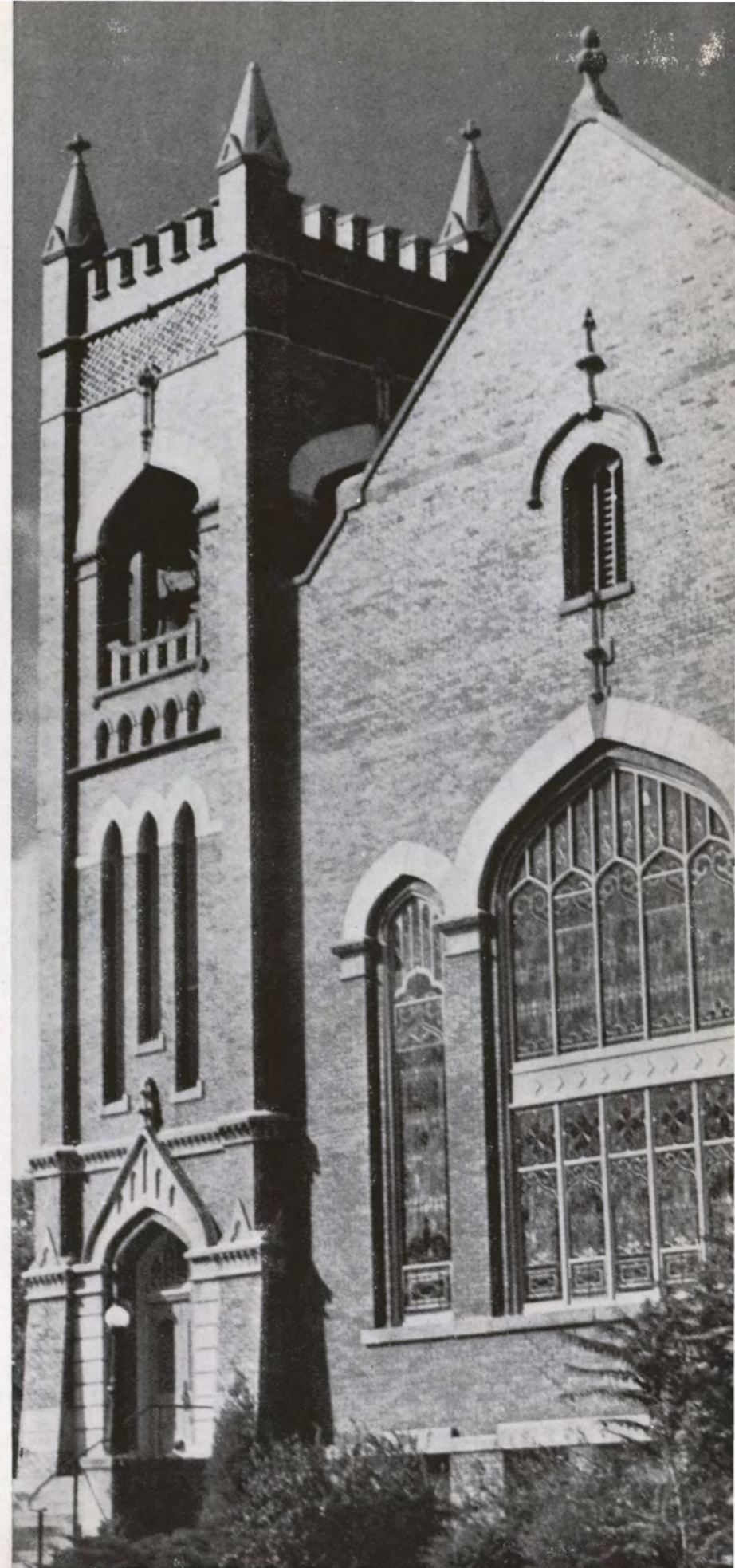


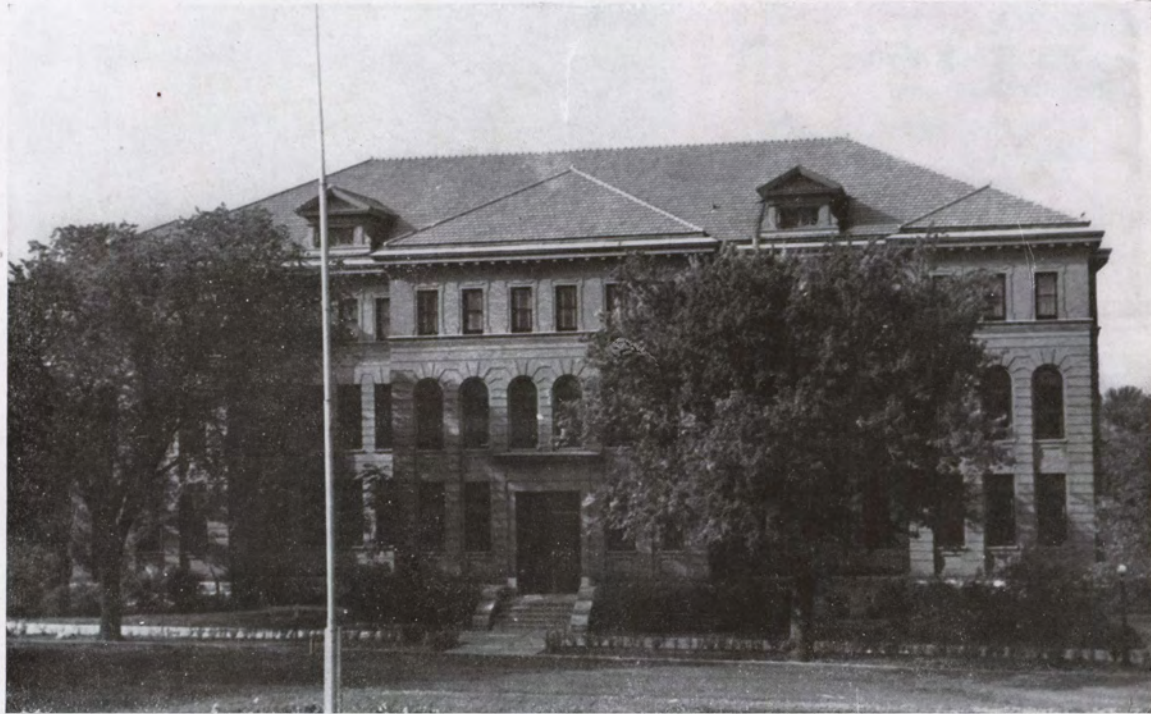


*"Home of our college days,
Hark to our song of praise,
While we our voices raise
For Morningside.
Thou Queen of all the land,
Loyal to thee we stand,
Thy sons a faithful band—
Dear Morningside."*

Foreword

The Sioux of 1942 brings you the record of another memorable year at Morningside. May this book keep alive in your hearts the experiences and friendships of college life.





Main Hall

DEDICATION



To
MENDAL BURTON MILLER
in recognition of his amiable guidance, sincere
friendship and unerring loyalty
to Morningside, the Sioux of
1942 is dedicated.





Prexy Lodge

PRESIDENT ROADMAN



EARL ALAN ROADMAN
B.D., D.D., LL.D.

Iowa State Teachers College
Upper Iowa University
Boston University Graduate School
University of Halle, Germany



*Morningside comes marching, with her hundreds strong,
All are now united in a mighty throng;
Stalwart sons are ready for the battle soon,
Marching on to vict'ry, Dear old Maroon.*



*Morningside goes marching, hear the shouts that ring
For our Alma Mater, praise to her they bring.
Banners crowned with glory, paths with vict'ry strewn,
Morningside forever, Dear old Maroon.*

FACULTY & STUDENTS



Board of Trustees



OFFICERS

D. W. STEWART, Sioux City, Iowa.....*President*
 H. I. DOWN, Sioux City, Iowa.....*First Vice-President*
 JOHN KOLP, Manson, Iowa.....*Second Vice-President*
 T. N. McCLURE, Sioux City, Iowa.....*Secretary-Treasurer*

TRUSTEES OF HONOR

Emlin Bergeson, Sioux City, Iowa
 O. M. Bond, Sioux City, Iowa
 C. C. Harshbarger, Onawa, Iowa
 J. N. Hughes, Des Moines, Iowa
 A. M. Jackson, Sioux City, Iowa
 A. W. Jones, Cherokee, Iowa
 Mrs. C. F. Long, Sioux City, Iowa

TERMS EXPIRE 1942

H. M. Burns, Algona, Iowa
 J. C. Buthman, Algona, Iowa
 J. J. Davies, Fort Dodge, Iowa
 Ray J. Harrington, Sioux City, Iowa
 Leon Hickman, Pittsburg, Pa.
 C. H. Kingsbury, Ponca, Nebraska
 John Kolp, Manson, Iowa
 W. H. Lease, Akron, Iowa
 J. V. Madison, Sioux City, Iowa
 L. H. Scheerer, Spencer, Iowa
 C. S. Van Eaton, Sioux City, Iowa
 Miss Rae Wetmore, Sioux City, Iowa

TERMS EXPIRE 1943

W. L. Breaw, Humboldt, Iowa
 C. W. Britton, Sioux City, Iowa
 G. W. Dunn, Sioux City, Iowa
 L. W. Feik, Sioux City, Iowa
 Clifford Harper, Sioux City, Iowa
 Harry F. Norris, Sioux City, Iowa
 R. F. Roach, Sioux City, Iowa

TERMS EXPIRE 1944

C. L. Barks, Orange City, Iowa
 F. E. Burgess, Algona, Iowa
 H. I. Down, Sioux City, Iowa
 J. A. Farnham, Cherokee, Iowa
 C. N. Smith, Sioux City, Iowa
 D. W. Stewart, Sioux City, Iowa





GEORGE EDWARD HILL
 A.B., A.M., Ph.D.
The Dean of the College
 Albion College
 Northwestern University
 University of Michigan



MYRON EARLE GRABER
 A.B., A.M., Ph.D., D.Sc.
Dean of Men
 Heidelberg College
 University of Iowa
 University of Michigan
 Columbia University
 Ohio State University
 University of Chicago



PHYLLIS ADELLE PEARSON
 A.B., A.M.
Dean of Women
 Oberlin College
 Syracuse University

Administration



Top Row: Adolph, Amundsen, Arkwright, Bolton.
 Middle Row: Burris, MacArthur, McClure, Miller.
 Bottom Row: Raun, Schuldt, Sweet, Vollink.

LELA ADOLPH
 A.B.
Cashier
 Iowa State Teachers College
 Morningside College

PEARL AMUNDSEN
 B.S.
Assistant Librarian
 University of South Dakota
 University of Chicago
 University of Illinois

MARJORIE ARKWRIGHT
 B.S.
Manager of Women's Residence Halls
 Stevens College
 University of Minnesota
 Iowa State College

MRS. ETHEL BOLTON
 B.S.M.
Admissions Counselor
 Morningside College

CLINTON E. BURRIS
 A.B.
Librarian
 Otterbein College
 Bonebrake Theological Seminary
 Chicago University

MRS. MAE MACARTHUR
Bookkeeper
 Western Union College
 National Business Training School

T. N. MCCLURE
Bursar
 Vincennes University
 University of Chicago

MINETTA MILLER
 A.B.
Secretary to the President
 Dakota Wesleyan
 Morningside College
 Mitchell Business School

H. J. RAUN
Superintendent of Buildings and Grounds

VICTOR V. SCHULTZ
 A.B., B.D.
Director of Admissions
 Morningside College
 Boston University
 University of Chicago
 Chicago Theological Seminary

ROY J. SWEET
Field Representative

ELMA VOLLINK
Secretary to the Bursar
 National Business Training School

Social Science



Top Row: Bergh, Carson, Emme.
Middle Row: Garwood, Hawthorn, Kirkpatrick, McNee.
Bottom Row: Miller, Murray, Tasche, Tweito.

BEATRICE BERGH
A.B., A.M.
Supervisor of Practice Teaching, East Junior High School
University of Iowa
Columbia University

FREDERICK S. CARSON
Ph.B., D.D.
Instructor in Religion
Morningside College
Boston University
University of Washington
University of California

EARLE E. EMME
A.B., B.D., A.M., Ph.D.
Professor of Psychology
Northwestern University
Garrett Biblical Institute
Columbia University
University of Chicago
Boston University
University of Iowa

JOHN D. GARWOOD
A.B., Ph. M.
Instructor in Economics
Wayne State Teachers College
University of Wisconsin
University of Louisiana

HORACE B. HAWTHORN
B.S., M.S., Ph.D.
Instructor in Sociology
Iowa State College
University of Wisconsin
University of Iowa

JAMES E. KIRKPATRICK
A.B., A.M., Ph.D.
Professor of Education
Cornell College
University of Iowa

MARCIA MCNEE
A.B., A.M.
Instructor in Elementary Education
Upper Iowa University
University of Chicago
University of Iowa
University of Minnesota

MENDAL B. MILLER
A.B., A.M.
Assistant Professor of Economics and Sociology
Greenville College
University of Southern California
University of Minnesota
University of Iowa

ETHEL RUTH MURRAY
A.B., A.M.
Registrar and Assistant Professor of Ancient Languages and History
Morningside College
University of Illinois
Columbia University

LAURA TASCHE
B.S.
Instructor in Commercial Education
University of South Dakota
Spearfish Normal
Aberdeen Normal
Fort Wayne Business Institute

THOMAS E. TWEITO
A.B., A.M., Ph.D.
Professor of History
St. Olaf College
University of Minnesota
University of Iowa

Fine Arts and Conservatory of Music



Top Row: Asmus, Canning, Clayton.
Middle Row: Kucinski, Kucinski, MacCollin, MacCollin.
Bottom Row: Metz, Reistrup, Smith, Timm.

CLARA ASMUS
Mus.B.
Instructor in Pianoforte
Morningside College
Pupil of Rudolph Ganz
Chicago Musical College

THOMAS S. CANNING
Mus.B., Mus.M.
Head of Departments of Organ and Theory
Oberlin College
Eastman School of Music

RICHARD CLAYTON
Mus.B.
Instructor in Violoncello
Michigan State College
Pupil of Ruth Montano Frautnick, Alexander Schuster, George Miquelle, Arthur Farewell, Noble Kreider, Antonio Modarelli, and Michael Press

ETHEL THOMPSON KUCINSKI
Mus.B.
Instructor in Pianoforte
Morningside College
Eastman School of Music
Chicago Musical College
Cleveland Institute
Juilliard School of Music
Student of Rudolph Ganz, Raymond Wilson, Arthur Loesser, James Friskin

LEO KUCINSKI
Mus.B.
Head of Violin Department
Morningside College
Warsaw Conservatory of Music
Oberlin Conservatory of Music
Cleveland Institute of Music
Juilliard Graduate School of Music
Pupil of Edward Izbickowski, Charlotte Demuth Williams, Albert Stoessel, Rubin Goldmark, Naoum Blinder

ELIZABETH N. MACCOLLIN
Mus.B., A.B.
Instructor in Voice
Oberlin Conservatory of Music
Lake Geneva
Student of L. A. Torrens
Morningside College

PAUL MACCOLLIN
A.B., Mus.B.
Director of the Conservatory of Music and Professor of Voice
Oberlin College
Morningside College
Oberlin Conservatory of Music
Lake Geneva
Pupil of Dr. Carl Dufft, Ellison Van Hoose

EDWARDA METZ
Mus. B.
Instructor in Pianoforte
Chicago Musical College
Boguslawski College of Music
Curtis Institute
Pupil of Tomford Harris, Ernest Hutcheson, Austin Conradi, Louis V. Saar, Louise Robyn, Harold Bauer, Angella Diller

JAMES REISTRUP
Mus.B.
Head of Pianoforte Department
Morningside College
Pupil of Emma Sage, J. Erick Schmall, Theo. Otterstrom, Rudolph Ganz, Fritz Voegelley, Cecil Burleigh

GRACE SMITH
A.B., A.M.
Instructor in Art
University of Iowa
University of South Dakota

EVERETT TIMM
Mus.B.
Head of Wind Instrument Department
Morningside College
Juilliard School of Music
Eastman School of Music
Chautauqua Summer School
Pupil of Donald Lentz, George Carlson, Georges Barrere, Arthur Lera, Daniel Groth, Donald McDonald, Adolph Schmid, Edward Royce, Bernard Rogers, Herbert Elwell

Language and Literature



Top Row: Dimmitt, Felton, Fischer, Kanthlener.
Bottom Row: Loveland, Mills, Woodford, Pearson.

LILLIAN ENGLISH DIMMITT
A.B., A.M., L.H.D.
Professor of Ancient Languages and Dean of Women Emerita
Illinois Wesleyan University
Columbia University
University of Chicago
American School of Classical Studies, Rome

JOHN G. FELTON
A.B., A.M.
Instructor in Speech
University of Minnesota
University of Iowa

LAURA CLARA FISCHER
A.B., A.M.
Professor of German
Carleton College
University of Chicago
University of Colorado
University of Wisconsin
University of Southern California

HENRY F. KANTHLENER
A.B., A.M.
Professor of Romance Languages
Cornell College
Harvard University
Institut Francais
University of Madrid, Spain
University of Chicago
University of Dijon
National University of Mexico

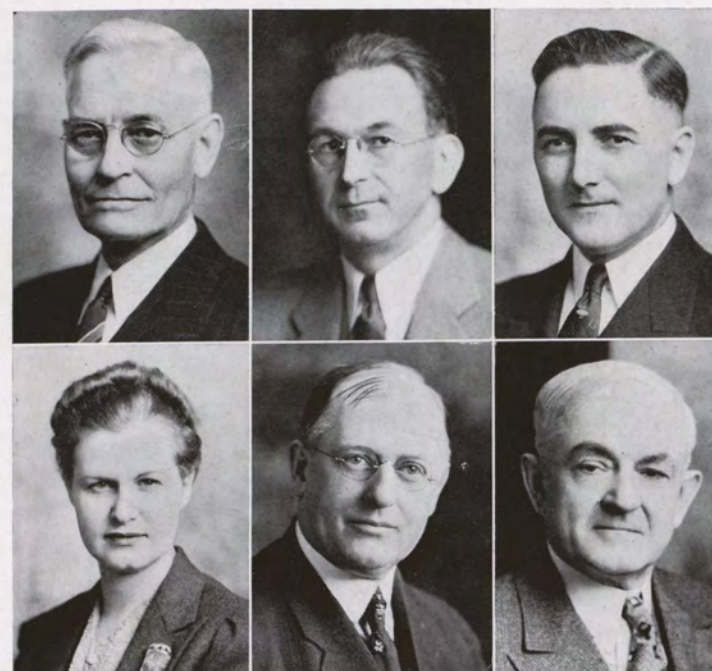
HELEN I. LOVELAND
A.B.
Professor Emerita of English Language
Smith College
Oxford University

MIRAH MILLS
A.B., A.M.
Professor of English and Secretary of the Faculty
Morningside College
University of Michigan
University of Southern California

FAITH FOSTER WOODFORD
A.B., Mus.B.
Instructor in Pianoforte and History of Music
Morningside College
University of Michigan
Pupil of Emil Liebling, Alberto Jonas, Clarence Eddy, John Doane, Olaf Anderson, Howard Wells, Palmer Christian

PHYLLIS ADELE PEARSON
A.B., A.M.
Dean of Women and Instructor in English
Oberlin College
Syracuse University

Natural Science



Top Row: Coss, Graber, Gwinn.
Bottom Row: McDonald, Stephens, Van Horne.

JAMES A. COSS
B.S., M.S.
Professor of Chemistry
Illinois Wesleyan University
University of Illinois
University of Chicago
Clark University

MYRON E. GRABER
A.B., A.M., Ph.D., D.Sc.
Professor of Physics, Dean of Men, and Co-ordinator of the C. P. T.
Heidelberg College
University of Iowa
University of Michigan
Columbia University
Ohio State University
University of Chicago

IRA J. GWINN
A.B., M.S.
Assistant Professor of Physics, Administrative Secretary
Morningside College
University of Iowa

RUTH McDONALD
A.B., M.S.
Instructor in Biology
Morningside College
Virginia Polytechnic Institute
Iowa State College

THOMAS C. STEPHENS
A.B., M.D.
Professor of Biology
Adrian College
University of Chicago
Kansas City University
Marine Biological Laboratory
University of Iowa
University of Michigan

ROBERT N. VAN HORNE
Ph.B.
Professor of Mathematics
Morningside College
Johns Hopkins University
University of Chicago

Physical Education and Hygiene



Top Row: Rogers, Saunderson.
Bottom Row: Scherer, Simons.

R. GLEN ROGERS
A.B.
*Instructor in Physical Education and
Assistant Athletic Director*
Morningside College, University of Illinois,
University of Southern California

BERNARD J. SCHERER
B.S.
Instructor in Physical Education
University of Nebraska

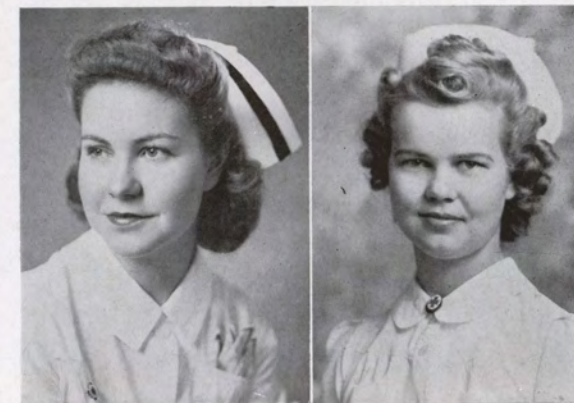
JASON M. SAUNDERSON
A.B.
*Professor of Physical Education and
Director of Athletics*
Albion College

LOIS ANNE SIMONS
B.E., M.S.
Instructor in Physical Education
Winona State Teachers College
Wellesley College

Health Office



DR. C. F. BERKSTRESSER, M. D.
College Physician



KATHLEEN SCHNOOR, R. N.
College Nurse

EDYTHE JOHNSON, R. N.
*Nurse for Women's
Residence Halls*



Class of 1942



Walter, Widler
Rohweder, Wood

PresidentByron Walter
 Vice-PresidentDon Widler
 Secretary-TreasurerClarice Rohweder
 Student Council Representative.....Lauree Wood



GLEN ADCOCK

B.S.

Sioux City, Iowa

"M" Club, 3, 4; Intramural Kittenball, 1, 2, 3, 4; Basketball, 1, 2, 3, 4.

"Heads, I win; tails, ditto."

PHYLLIS BAKER

A.B.

Sergeant Bluff, Iowa

Iowa University, 1, 2; Kappa Zeta Chi, Vice-President, 4; Collegiate Players, 4; Pep Club, 4; Pi Gamma Mu, 4; Psi Chi, 4; M.F.T.C., Secretary-Treasurer, 4.

"Sincerity coupled with wisdom."

MARION BENTON

B.S.

Oto, Iowa

Sigma Theta Rho, 1, 2, 3; International Relations Club, 3; M.F.T.C., 4; Band, 1, 2, 3, 4; Clarinet Quartet, 4; Intramural Basketball, 1, 2, 3, 4; Kittenball, 1.

"I've got plenty of 'sax' appeal."

MARIE BERGQUIST

A.B.

Sioux City, Iowa

Kappa Pi Alpha, Sergeant-at-Arms, 2, Vice-President, 4; Eta Sigma Phi, 2, 3, 4, Sergeant-at-Arms, 3; M.F.T.C., 4.

"Whoever loved, that loved not at first sight?"



STANLEY ANDERSON

A.B.

Sioux City, Iowa

Pi Gamma Mu, 3, 4; Psi Chi, Secretary, 3, President, 4; Kappa Chi, 3, 4; Vesper Choir, 1; M.C.A., 1, 2, 3, 4; Collegian Reporter, 3; Freshman Class Vice-President; Who's Who in American Colleges and Universities, 4.

"There lies a great deal of devilry beneath that calm exterior."



BARBARA BARRY

A.B.

Peterson, Iowa

Kappa Zeta Chi, Directress, 2, Recording Secretary, 3, Treasurer, 4; Pi Gamma Mu, 3, 4; Eta Sigma Phi, 3, Vice-President, 4; M.F.T.C., 4.

"The spirit is willing, but the flesh is weak."



MARGARET BERG

B.S.M.

Sioux City, Iowa

Mu Phi Epsilon, 3, Secretary, 4; M.F.T.C., 4; Vesper Choir, 1, 2, 3, 4; M.C.A., 1, 2, 3, 4.

"A diligent student she was, and not without reward."



JAMES BOLTON

A.B.

Sioux City, Iowa

Alpha Tau Delta, 1, 2, House Chairman, 3, Treasurer, 3, 4; Chapel Choir, 1, 2, 3, 4; Collegian Reporter, 4.

"He 'Ames' to please."

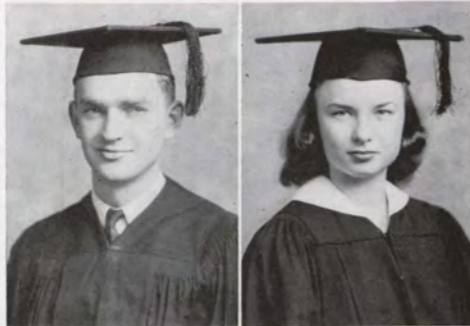


ARTHUR BONATH
A.B.

Primghar, Iowa

Intramural Basketball, Softball,
2, 3, 4; M. F. T. C., 4.

*"Silence is golden and much
safer."*



KATHRYN BROWN
A.B.

Hinton, Iowa

Kappa Zeta Chi, Usher, 2, Critic, 4,
President, 4; Inter-sorority Council,
4; Alpha Psi Omega, 4; Collegiate
Players, President, 3; W.A.A., 1, 2,
Treasurer, 3, Vice-President, 4; In-
tramural, 1, 2, 3, 4; Yale-Harvard,
1, 2, 3, 4; Cheerleader, 1, 2, 3;
Attendant to Miss Morningside, 4.

*"A thing of beauty has joy-
rides forever."*



MARGIE CARLSON
A.B.

Sioux City, Iowa

Alpha Sigma, 2, 3, 4; Cosmopolitan
Club, Vice-President, 3, President,
4; Collegian Reporter, 3.

*"I can read now—another
year and I'll bet I could
even write."*



FLORENCE DAHL
A.B.

Sioux City, Iowa

M.F.T.C., 4.

"Oh, you beautiful 'Dahl'."



BETTY BOOTJER
A.B.

Waverly, Iowa

Kappa Pi Alpha, 2, Chaplain, 3,
Recording Secretary, 4, President,
4; Inter-sorority Council, 3, 4; Sig-
ma Tau Delta, 3, 4, Secretary, 3;
Collegiate Players, 1, 2, 3; Manu-
script Club, 4; Chapel Choir, 1, 2,
3, 4; Ishkoodah, 1; W.S.G.A. Sec-
retary-Treasurer, 2; Agora Board, 2;
Sioux Scalpers, 2; M.F.T.C., 4.

*"A cute little Pi with lots of
pep."*

ROBERT CAINE
A.B.

Willmar, Minnesota

Alpha Tau Delta, Chaplain, 1; Pi
Gamma Mu, 3, 4; Kappa Chi, 1, 2,
3, President, 4; Eta Sigma Phi, 2,
3, 4, President 3; Pi Kappa Delta,
3, 4; Alpha Psi Omega, 4; Colle-
giate Players, 1, 2, 3; Cosmopolitan
Club, 3, Treasurer, 4; Chapel Choir,
1, 2, 3, 4; Intramural Basketball,
Kittenball, 2, 3; "Sioux," 4; M.C.
A., 1, 2, 3, 4, Treasurer 2; Y.M.C.
A. Secretary, 1, 3; Grace League, 1,
2, 3, 4, President, 3; Gospel
Team, 3.

*"My text for today will be—
'Make hay while the sun
shines'—6:17 Book of
Timothy."*

JANICE COLLIER
A.B.

Sioux City, Iowa

Kappa Zeta Chi, 2, 3, Critic, 4;
W.A.A., 1, 2, 3, Treasurer, 4; Intra-
mural, 1, 2, 3, 4; Yale-Harvard,
2, 4; "Sioux," 4.

*"Plenty nice girl with a
plenty big interest in
the Navy."*

BERNARD FEIKEMA
B. S.

Sioux Falls, South Dakota

Phi Sigma, 1, 2, President, 3; Inter-
fraternity Council President, 3; "M"
Club, 2, 3, 4; Intramural Basket-
ball, Kittenball, 1, 2, 3, 4; Fresh-
man Class Vice-President; Sopho-
more Class Vice-President; Student
Council Vice-President, 4; Football,
1, 2, 3, 4.

*"Tall, blond and a credit to
the 'M' Club."*

MAXINE FOSTER
B.S.M.

Sioux City, Iowa

Kappa Zeta Chi, 2, 3, Directress, 4;
Mu Phi Epsilon, Historian, 3, Vice-
President, 4; Chapel Choir, 1;
Vesper Choir, 2, 3, 4.

*"Music is well said to be the
speech of angels."*

HOMER GARRETSON
B.S.M.

Sioux City, Iowa

Phi Mu Alpha, Vice-President, 4;
Symphony Orchestra, 1, 2, 3, 4;
Band, 3, 4; String Quartet, 1, 2, 3,
4; String Trio, 1, 2, 3, 4; Clarinet
Quartet, 4; Vesper Choir, 1, 2, 3;
Conservatory Vice-President, 4.

*"Somewhat livelier than his
mother thinks him."*

JOHN GEDWILLO
A.B.

Sioux City, Iowa

Asbury College, 2; Cosmopolitan
Club, 1, 3, 4, Secretary, 1; Kappa
Chi, 1, 3, 4; Intramural Kitten-
ball, 3.

"Blest be the tie that binds."

MARVIN GRANSTROM
B.S.

Sioux City, Iowa

Pre-Engineers, 2, 3.

*"A little learning is a
dangerous thing."*



CHARLES GANDEK
A.B.

Sioux City, Iowa

Pi Gamma Mu, 3, 4; Beta Beta
Beta, 3, President, 4; Biology Club,
3, 4; Cosmopolitan Club, 2, 3; M.
C. A., 2; Grace League, 2, 3, 4.

*"None but himself can be his
parallel."*

ANTHONY GEDWILLO
A.B.

Sioux City, Iowa

Asbury College, 2; Kappa Chi, 3, 4;
Cosmopolitan Club, 1, 3, 4; Vesper
Choir, 1; M. C. A., 1; Gospel
Team, 3.

*"How green you are and fresh
in this old world."*



EARL GOODENOW
B.S.

Battle Creek, Iowa

Alpha Tau Delta, 2, Sergeant-at-
Arms, 3, Treasurer, 4; "M" Club,
4; Pi Gamma Mu, 4; Band, 1; In-
tramural Basketball, 1, 2, Kitten-
ball, 1, 2, 3, 4; M.F.T.C., 4;
Football, 1, 2, 3, 4.

*"My laugh would cause a
riot in a morgue."*

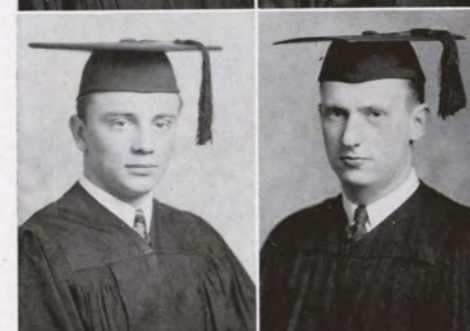


RAYMOND GUSTESON
A.B.

Sioux City, Iowa

Alpha Tau Delta, Secretary, 1, 2, 3,
President, 4; Pi Gamma Mu, 3,
President, 4; Psi Chi, 3, Vice-
President, 4; Vesper Choir, 1; Col-
legiate Players, 3, 4; Alpha Psi
Omega, 4; International Relations
Club, 3; M.F.T.C., 4; Collegian Re-
porter, 1, 4; "Sioux" Business Man-
ager, 4; Inter-fraternity Council Sec-
retary, 4; Board of Control, 2, 3, 4;
Who's Who in American Colleges
and Universities, 4.

*"What will the Tau Delt do
without him?"*



ALBERT H. HAENFLER
A.B.

Avon, South Dakota.

Phi Sigma, 1, 2, 3, 4; Vice-President, 3; "M" Club, 2, 3, 4; Intramural Basketball, Kittenball, 1, 2, 3, 4; Band, 1, 2, 4; Health King Attendant, 3; Football, 1, 2, 3, 4.

"The Avon flash."



DORIS HALL
A.B.

Whiting, Iowa

Pi Gamma Mu, 3, Secretary, 4; Psi Chi, 3, Corresponding Secretary, 4; M.F.T.C., 4.

"Mild manners and a gentle heart are hers."



WALLY HANSON
B.S.

Winona, Minnesota

Phi Sigma, 4; "M" Club, 3, 4; Intramural Kittenball, 1, 2, 3, 4; Intercollegiate Golf, 2, 3, 4; International Relations Club, 3; Collegian Reporter, 3; "Sioux," 4; Football, 2, 3, 4; Basketball, 1, 2, 3, 4.

"It's not what a man stands for, it's what he falls for."



ROBERT HEMPSTEAD
B.S.

Sioux City, Iowa

Alpha Tau Delta, 1, 2, 3, 4; Sigma Pi Sigma, Secretary-Treasurer, 4; Pre-Engineers, 1, Secretary, 2, Vice-President, 3, President, 4; Aviation Laboratory Instructor, 1, 2, 3; Certificated C.P.T. Ground School Instructor, 4.

"A witty sort of fellow."



ARDIS HALL
B.S.M.

Garner, Iowa

Chapel Choir, 2, 3, 4; Band, 1, 2, 4.

"She has a certain dusky beauty."

ROBERT HAMEL
A.B.

Sioux City, Iowa

Pi Kappa Delta, 1, 2, 3, 4, President, 3, 4; Pi Gamma Mu, 4; Collegian Reporter, 2; "Sioux," 4.

"He hated to work and it hurt his eyes to study, so he became a statesman."

FULLER HASKINS
A.B.

Sioux City, Iowa

Sigma Pi Sigma, 3, President, 4; Pre-Engineers, 1, 2, 3, President, 4; Who's Who in American Colleges and Universities, 4.

"If he can't figure it out, no one here can."

MURIEL HILER
A.B.

Rockwell City, Iowa

Alpha Sigma, 3, 4; W.S.G.A., Sophomore Hall President, 4; M.F.T.C., 4; F.T.A., 4.

"She doesn't say much, but action speaks louder than words."

BETTY HOEFER
A.B.

Charter Oak, Iowa

Kappa Zeta Chi, 2, 3, Usher, 4; Collegiate Players, 1, 2, 3, President, 4; W.S.G.A., Social Chairman, 3, Freshman Hall President, 4; Ishkoodah, 1; Agora, "Sioux," 3; M.F.T.C., 4; Pep Club, 4; Alpha Psi Omega, 4.

"No truer friend could e'er be found."



DOROTHY JONES
B.S.M.

Sibley, Iowa

Kappa Zeta Chi, 2; Mu Phi Epsilon, Corresponding Secretary, 4; Chapel Choir, 3, 4; Band, 1, 2; Student Council, 4; W.S.G.A., President, 4; Who's Who in American Colleges and Universities, 4.

"She may be wrong—but he's always Wright."



JEAN JONES
B.S.M.

Missouri Valley, Iowa

Alpha Sigma, 2, 3; Vice-President, 4; Chapel Choir, 1, 2, 3, 4; Symphony Orchestra, 1, 2, 3, 4; Band, 1, 2, 3, 4; Flute Trio, 2; Drum Majorette, 2, 3, 4.

"Light or small, short or tall, She sets her snare to catch them all."

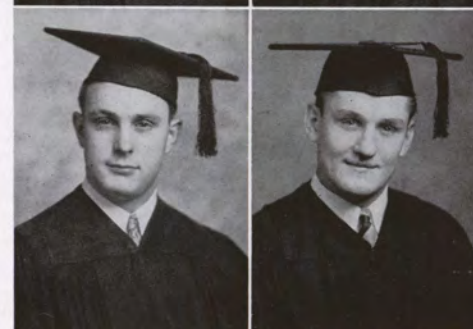


GENE KENNEDY
B.S.

Sioux City, Iowa

Alpha Tau Delta, Treasurer, 1, Pledgemaster, 2, House Chairman, 4, "M" Club, 2, 3, 4; Collegiate Players, 2, 3, 4; Intramural Kittenball, 1, 2, 3, 4; Pep Club, 4; Alpha Psi Omega, 4; Football, 1, 2, 3, 4.

"Mr. Felton's right hand man."



HELEN JOHNSON
A.B.

Sioux City, Iowa

Kappa Pi Alpha, Critic, 2, Hall Chairman, 3, President, 4; Intersorority Council, 3, 4; Phi Sigma Iota, 3, President, 4; Psi Chi, 4; Ishkoodah, 1; Agora; M.F.T.C., 4; Chapel Choir, 1, 2, 3; Intramural, 2, 3, 4; "Sioux," 3, Editor, 4; Who's Who in American Colleges and Universities, 4; Attendant to Miss Morningside, 4; Sioux Queen, 4.

"The fairest garden in her looks, And in her mind the wisest books."

FRANCIS JONES
A.B.

Hinton, Iowa

"M" Club, 3, 4; Intramural Kittenball, 1, 2, 3, 4; Student Body President, 4; Who's Who in American Colleges and Universities, 4; Basketball, 1, 2, 3, 4.

"I got it bad and that ain't good."

MINA KARCHER
A.B.

Sioux City, Iowa

Sigma Tau Delta, Secretary-Treasurer, 4; Eta Sigma Phi, 3, Secretary-Treasurer, 4; Psi Chi, 3, Recording Secretary, 4; Manuscript Club, Librarian, 4; Cosmopolitan Club, 1; M.F.T.C., 4; Collegian Reporter, 3, 4.

"Marks, not men, have always been her aim."

STEPHEN KERZIE
B.S.

Chisholm, Minnesota

Hibbing Junior College, 1, 2; Phi Sigma, 4; "M" Club, 3, President, 4; Intramural Kittenball, 3, 4; Student Council, 4; Football, 3, 4; Basketball, 3, 4.

"It ain't what ya tink— It's da trill ya get, even if dey ain't 'All Americans'."



LAURETTA KING

B.S.M.

Sioux City, Iowa

Kappa Pi Alpha, 2, 3, 4; Mu Phi Epsilon, 3, President, 4; Band, 1, 2, 3, 4; Symphony Orchestra, 1, 2, 3, 4; Freshman Class Secretary; May Queen Attendant, 1.

"She has the difficulty of choosing between a trombone and a clarinet."



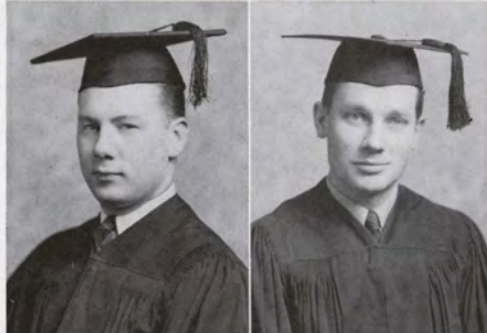
JOHN KOLP

A.B.

Manson, Iowa

Alpha Tau Delta, 1, Chaplain, 2, Treasurer, 2, 3, Vice-President, 3, President, 4; Chapel Choir, 2; Intramural Basketball, Kittenball, 1, 2, 3, 4; M.C.A., 3, 4; Collegian Reporter, 4; Sophomore Class President; Student Council, 2, 4; Student Body President, 4; Health King Attendant, 1, 2; Health King, 3; Who's Who in American Colleges and Universities, 4.

"A leader and all around good fellow."



ROMAIN LAMKIN

A.B.

Canton, South Dakota

Phi Sigma, 4; Intramural Basketball, 2.

"I'm an 'A' student. My girl mimeographs all the tests."



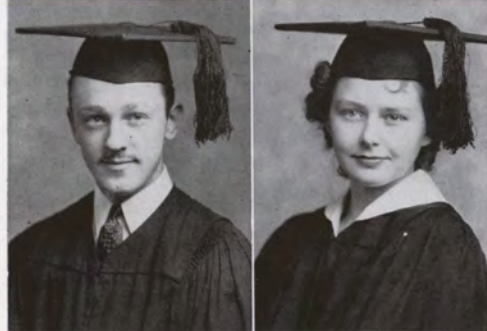
ROBERT LOWRY

B.M.

Cherokee, Iowa

Phi Mu Alpha, 3, 4; Band, 1, 2, 3, 4, Assistant Conductor, 4; Symphony Orchestra, 1, 2, 3, 4; Woodwind Quartet, 3; Clarinet Quartet, 4; Varsity Swing Club, 1.

"He's either tooting or on a toot."



RUTH KINGSBURY

A.B.

Sioux City, Iowa

Kappa Zeta Chi, Usher, 2, Critic, 3, Vice-President, 4; Sigma Tau Delta, 4; Collegiate Players, 2; Agora, Vice-President, 3, President, 4; W. A. A., 2, 3, President, 4; Intramural, 2, 3, 4; Yale-Harvard, 2, 3, Captain, 4; Collegian Reporter, 2; M.C.A., Social Chairman, 2; May Queen, 1; Student Council, Secretary-Treasurer, 4; Who's Who in American Colleges and Universities, 4; Sioux Queen, 3; "Miss Morning-side," 4.

"We named her queen and a queen she was."



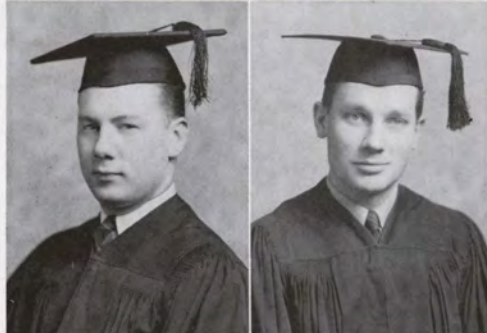
LEROY KUHLMANN

B.M.

Sioux City, Iowa

Chapel Choir, 1, 2, 3, 4; Tenor Soloist in the Messiah, 3; Collegiate Players, 1, 2; Grace League, 1, 2, 3.

"I like to play ghost 'cause I'm such a spook."



JOE LEASE

A.B.

Sioux City, Iowa

Phi Sigma, President, 2, Vice-President, 3; "M" Club, 3; Intramural Basketball, Kittenball, 1, 2, 3; Football, 1, 2, 3, 4.

"I went here to get the general impression of things."



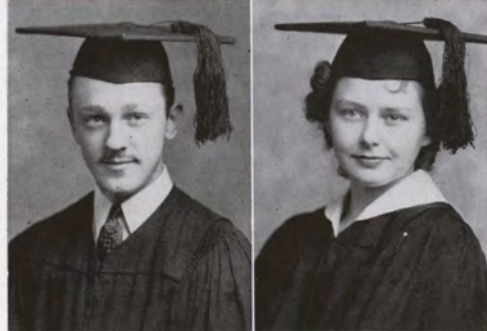
DOROTHY LUCHSINGER

A.B.

Sioux City, Iowa

Alpha Sigma, Pianist, 2, Chaplain, 3; Mu Phi Epsilon, 4; Psi Chi, 3, Treasurer, 4; M.F.T.C., Vice-President, 4; M.C.A., 2, 4; Grace Collegians, Secretary, 3.

"Kirk's efficient secretary."



TED MACUR

A.B.

Sioux City, Iowa

Phi Sigma, 2, 3, 4; Intramural Basketball, Kittenball, 1, 2, 3, 4; Intramural Board, 3; Collegian Reporter, 3.

"His time is spent in the business office, and it isn't to see McClure."



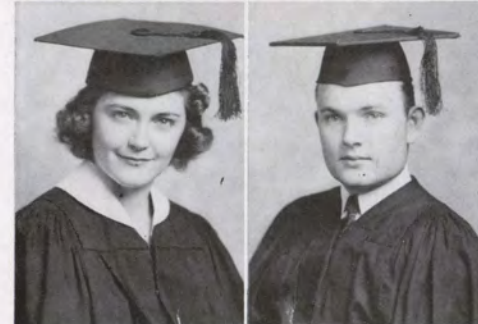
LUCILLE MATHENA

A.B.

Sioux City, Iowa

Iowa University, 2; Alpha Sigma, 3, 4; Ishkoodah, 1; Agora; M.F.T.C., President, 4; Collegian Reporter, 4.

"No beauty is like the beauty of the mind."



MILDRED PFEIFFER

A.B.

Hartley, Iowa

Alpha Sigma, 3, Historian, 4, Vice-President, 4; M.F.T.C., 4; Psi Chi, Treasurer, 4; Band, 1, 2, 3, 4; W.S.G.A., Vice-President, 4.

"By saying nothing you may pass as wise."



LES PRUEHS

B.S.

Sioux City, Iowa

"Ignorance is bliss, 'tis folly to be wise."



KATHRYN MADISON

A.B.

Sioux City, Iowa

Alpha Sigma, 2, 3, 4, Secretary, 3, Critic, 3; Inter-sorority Council, 3; Sigma Tau Delta, 3, Vice-President, 4; Eta Sigma Phi, 3, 4; Beta Beta Beta, 4; Biology Club, 3, 4; Manuscript Club, 1, 2, Vice-President, 3, President, 4; Vesper Choir, 1; Agora Board, 3; Collegian Reporter, 1, 4; "Sioux," 2, 4; M.C.A., 1, 2, 3, 4; Grace League, 1, 2, 3, 4; Who's Who in American Colleges and Universities, 4.

"Brighten the corner where you are!"



ROY MICHAUD

A.B.

Jefferson, South Dakota

"A hard worker who should go places."



MAXINE POOLEY

A.B.

Duluth, Minnesota

Milwaukee State Teachers' College, 3; Kappa Zeta Chi, 2, Usher, 4; Collegiate Players, 2, Secretary, 4; Pep Club, 2, Secretary, 4; M.F.T.C., 4; Intramural, 2; Collegian Reporter, 4; Vesper Choir, 1; Board of Control, 4.

"Giggle-box."



GEORGE ROBERT PULLMAN

A.B.

Sioux City, Iowa

Psi Chi, 2, 3, 4; Three Keys and a Chord, 2, 3.

"You play gin rummy, I'll play the piano."





ROBERT REESE

A.B.

Jefferson, Iowa

Phi Sigma, President, 3, Secretary, 3, Chaplain, 4; "M" Club, 4; Collegiate Players, 2, 3, 4; M.F.T.C., 4; Junior Class President; Collegian Reporter, 3, 4; Student Council, 3; Football, 1, 2, 3, 4.

"A self-made man who loves his maker."



FERNE ROLAND

A.B.

Sioux City, Iowa

Alpha Sigma, Historian, 2, Critic, 3, Recording Secretary, 3, Treasurer, 4; Beta Beta Beta, 3, 4; Pi Gamma Mu, 3, 4; Psi Chi, 2, 3, 4, Treasurer, 3, Librarian, 4; Biology Club, 3, 4.

"She wasn't satisfied with one man."



ELMENDO ROSSI

B.S.

Iron Mountain, Minnesota

Eveleth Junior College, 1, 2; Phi Sigma, 3, 4; "M" Club, 3, 4; Intramural Basketball, 4, Kittenball, 3, 4; M.F.T.C., 4; Freshman Basketball Coach, 4; Football, 3, 4; Basketball, 3.

"Who does not love wine, women and song, Remains a fool his whole life long."



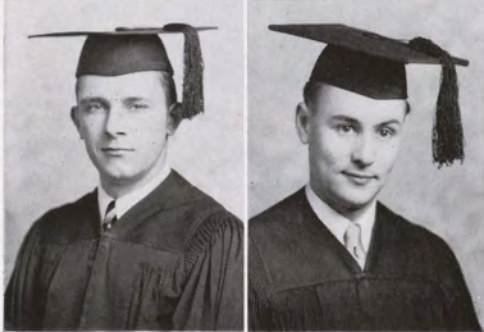
ROBERT SHAFFER

B.S.

Hartley, Iowa

Sigma Theta Rho, Sergeant-at-Arms, 1; Pre-Engineers, 1, 2, 3.

"He's rather lively for a morgue assistant."



CLARICE ROHWEDER

B.S.M.

Little Rock, Iowa

Kappa Pi Alpha, 2, Sergeant-at-Arms, 3, Librarian, 3, Hall Chairman, 4, Vice-President, 4; Inter-sorority Council, 4; Ishkoodah, 1; M.F.T.C., 4; Chapel Choir, 2, 3, 4; Band, 2; Intramural, 2, 3, 4; W. S. G. A., Junior Hall President, 4; Agora; Senior Class Secretary, Treasurer.

"Wally's sideline and bleachers."

MAXCEAN ROOK

B.S.M.

Sioux City, Iowa

Symphony Orchestra, 1, 2, 3, 4; Vesper Choir, 1, 2, 3; Agora; F.T.A., 3, 4.

"A redhead with none of the traits of a redhead."

KATHLEEN SCHATZ

A.B.

Sioux City, Iowa

Alpha Sigma, 2, Chaplain, 3, Vice-President, 3, Critic, 4; Beta Beta Beta, 3, 4; Alpha Kappa Delta, 4; Biology Club, 3, 4; M.F.T.C., 4; Swimming Team, 2; Collegian Reporter, 4; "Sioux," 3, 4.

"I love to wind my tongue up, Then I love to hear it go."

WILLIAM C. SMITH

A.B.

Sioux City, Iowa

Eta Sigma Phi, 3, President, 4; Kappa Chi, 2, 3, 4, Vice-President, 2.

"A very versatile student."

MARIAN STICKELS

B.M.

Sioux City, Iowa

Kappa Zeta Chi, 2; Symphony Orchestra, 1, 2, 3, 4; Faculty String Quartet, 3, 4; Student String Quartet, 1, 2.

"She fiddles her time away over at the Con."

PHYLLIS THORNGREEN

A.B.

Sioux City, Iowa

Alpha Sigma, Reporter, 3, President, 4; Pi Gamma Mu, 3, Vice-President, 4; Beta Beta Beta, 3, Secretary, 4; Biology Club, Secretary, 3, Vice-President, 4; Psi Chi, 2, 3, 4, Treasurer, 3; Psychology Club, 1; Collegian Reporter, 3.

"She rotates between two places, Ath hall and the Biology lab."

OPAL WALKER

B.S.M.

Webster City, Iowa

Webster City Junior College, 1; Chapel Choir, 2, 3, 4; Agora; M. C. A., 2, 3, 4; Grace League, 2, 3, 4.

"Do you not know I am a woman? When I think, I must speak."

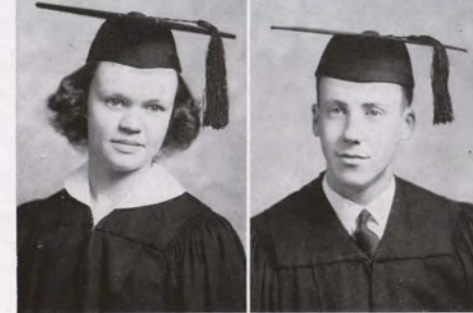
HELEN WEAVER

A.B.

Sioux City, Iowa

Kappa Zeta Chi, Usher, 2, Corresponding Secretary, 4, Critic, 4; W. A. A., 1, 2, 3, 4; Intramural, 1, 2, 3; "Sioux," 4.

"Bright, snappy, full of fun."



GLEN THOMPSON

B.S.

Jefferson, Iowa

Phi Sigma, 1, 2, 3, Treasurer, 2; Intramural Basketball, 1, 2, 3, Kittenball, 2, 3; Junior Class Vice-President; Football, 1, 2, 3, 4.

"The quiet kind whose nature never varies."

CLARENCE VORIS

B.S.

Sioux City, Iowa

Sigma Theta Rho, 1, 2; Psi Chi, 2, 3, 4; Pre-Engineers, 4; Collegian Reporter, 2.

"I was born with a chisel in both hands."

BYRON WALTER

A.B.

Lyons, Nebraska

Pi Kappa Delta, 1, 2; Band, 1, 4; Intramural Basketball, Softball, 1, 2, 3, 4; Senior Class President.

"God bless the man who first invented sleep."

H. FRED WELLMERLING

B.S.

Spencer, Iowa

Alpha Tau Delta, 1, 2, 3, 4, Social Chairman, 1, 2, Vice-President, 4; Marching Band, 4; Collegian Reporter, 4.

"I'm off to see the world—at least the Far East!"



HARRY WERDER

B.M.

Kingsley, Iowa

Phi Mu Alpha, President, 3, 4; Symphony Orchestra, 1, 2, 3, 4; Band 1, 4; Conservatory President, 4; Student Council, 4; Collegian Reporter, 4.

"As upright as an old fashioned piano."



DONALD WIDLER

B.S.

Downers Grove, Illinois

Phi Sigma, 1, President, 2, Pledge Master, 3, 4; "M" Club, 2, 3, Vice-President, 4; Intramural Kittenball, 1, 2, 3, 4; Senior Class Vice-President; "Sioux," 4; Football, 1, 2, 3, 4.

"There's nothing half so sweet in life as love's young dream."



LAUREE WOOD

A.B.

Sioux City, Iowa

Kappa Zeta Chi, 2, Recording Secretary, 3, Corresponding Secretary, 3, Social Chairman, 4, President, 4; Sigma Tau Delta, Vice-President, 3, President, 4; Collegiate Players, 1; Student Council, 4; Collegian Reporter, 3, Editor, 4; M.F.T.C., 4; Iowa Federation of Prospective Teachers, Vice-President, 4; Who's Who in American Colleges and Universities, 4.

"She does many things and all of them well."

Class of 1943



Spiry, Reynolds
Smith, Coss

PresidentOrval Spiry
Vice-President.....Wilson Reynolds
Secretary-TreasurerVera Smith
Student Council Representative.....Florence Coss



JAMES ADAMS
"A gentleman and a scholar"

HELEN ANDERSON
"Wherever she is there's fun"

MAURINE BANE
"Pretty and nice"



ROBERT BENNETT
"A man is a two face"

DOROTHY BROWN
"The executive type"

FAITH BUCHNER
"She speaks for herself"



ARDELLE CAPELLEN
"Cute and charming"

FLORENCE COSS
"An individualist, that's why we like her"

BOB DANIELSON
"Arthur Murray taught him dancing"



DOROTHY DEVRIES
"There's something about her"

GWEN DOWNEY
"Intense and intelligent"

MARY FAIRCHILD
"Talented and temperamental"



BOB FARB
"The type people like to sit next to in class"

JAMES FORRESTER
"He came to college for an education"

BROWN GARLOCK
"A super-salesman"

IVAN GOSSOO
"Strong and silent"

ROY HOLLAND
"Dutch date"

ALICE JACOBS
"Where there's a will there's a way"

FRANCIS KINGSBURY
"A one-woman man"

LAINYS KITTEMAN
"She's got that old time religion"

JEAN LAFFOON
"An example of the scientific mind"

JAMES LEACHMAN
"Words fail us"

LOUISE MADISON
"Brain-girl"

MARY PATTERSON
"An ardent admirer of the team"

LOWELL RALSTON
"Hut-sut Ralston"

LEONARD REHDER
"Great Stone Face"

WILSON REYNOLDS
"The Tau Delts' best bet"

MARIELLEN RIFENBARK
"A jolly junior"

DALE ROBAR
"He slept his way through college"

ESTHER SANTEE
"Any relation to Santee Claus?"

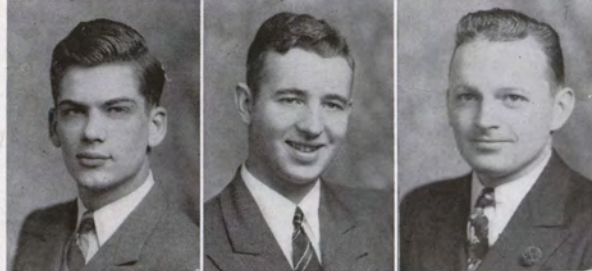




KATHLEEN SCHNOOR
"Morningside's Florence Nightingale"

MARGARET SLOWEY
"The perfect secretary"

VERA SMITH
"You-all can see she has class"



ORVAL SPIRY
"A diamond in the rough"

JAMES STECK
"A regular 'Feller'"

LEONARD STILES
"A loyal M. C. A'er"



VIRGINIA STOAKES
"Chatter-box"

HARRIETT SWANSON
"She's sweetness and light"

MARJORIE SWISHER
"Oh those dark eyes"



ELEANOR THORPE
"A woman's work is never done"

JAMES VANDER BERG
"Oh for the life of an athlete"

ROBERT WAGSTAFF
"Enlivens the book-store"



RUTH WALKER
"An example of what W.A.A. can do for you"

JAMES WALLEN
"A fun Joe"

DON WERTZ
"He and Wallen are a pair"



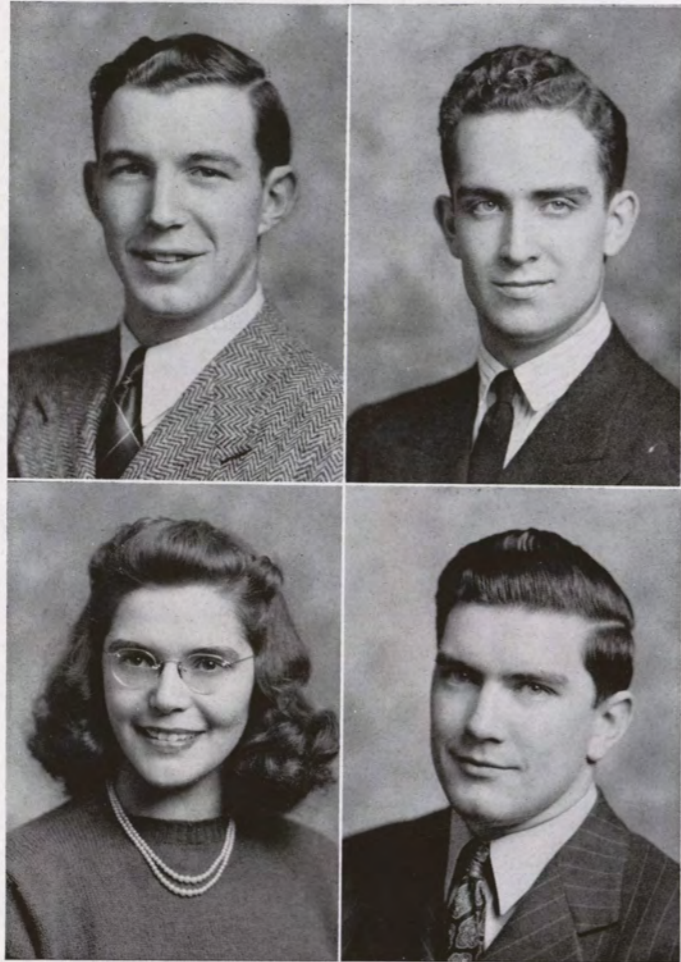
TED WHICHER
*"In union there is strength; in ours
 there's fun because of Ted."*

JEAN WHITE
"Continually up in the air"

WALT YEAGER
"A doctor in the making"



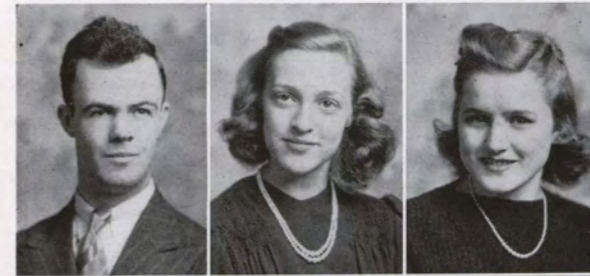
Class of 1944



Mathers, Schellenger
Dunn, Saunderson

PresidentNorman Mathers
 Vice-PresidentRoy Schellenger
 Secretary-TreasurerFerne Dunn
 Student Council Representative.....George Saunderson

CREG ANDERSON
 SALLY ARTHUR
 HELEN ASHBY



BETTY LOU BECKWITH
 CARLYNE BIEDENFELD
 HAROLD BOMGARS



BETTY BOYD
 EDWIN BREAW
 FRANCES BRIDGE

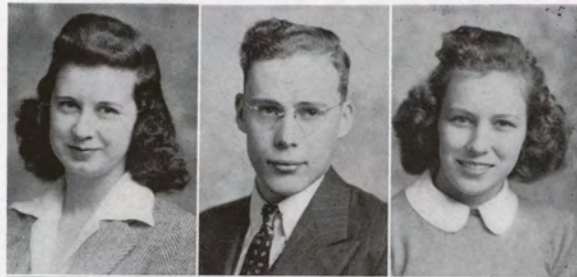


LUELLA BRUHN
 LOWELL BUCKMILLER
 BETTE BUELL



DAVE BURRIS
 RONALD BUSH
 EVA CARLSSON





BETTY LEW CARTER
FRANCIS CHAMBERS
VERNICE CHRISTIANSEN



MIRIAM COX
GERTRUDE CURTIS
DOROTHY DAWSON



LUBERTHA DE GRAAF
JIM DEMETROULIS
STEVE DE VRIES



CHARLES DIRR
FERNE DUNN
KATHRYN DEIRUP



JANET EVANS
HOPE FAUL
MARJORIE FOSTER



HARRIETT FRENCH
JANE GARRETSON
ORIN GOODRICH



EVELYN HAGBERG
BETTY LOU HALE
EDITH HARRISON



CLARICE HAWTHORNE
CAROL HEDEEN
MARY LOU HELD



ROBERT HELD
ROBERTA HELD
LOIS HELM



DOUG HEMPSTEAD
DONNA HOEFER
RUTH HOFMANN





CLAIR HUNTER
LORRAINE IVERSON
ELINOR JACOBSON



WESLEY JACOBSON
EDYTHE JOHNSON
THELMA JOHNSON



LAMAR JONES
HARRIETT KIRBY
LYLE KNUDSEN



HAROLD LADWIG
MARVEL LAMB
DONALD LASUER



ERWIN LOEWENBERG
EVELYN MADSEN
INEZ MCKILLIP



NORMAN MATHERS
STELLA MILLER
DONALD NELSON



FRANKLIN NELSON
WILLO JEAN NIEMEYER
CHARLES OBYE



GLORIA ODEGARD
ROBERT POSTIN
HARRIETT PRATT



CECIL RANNELLS
RUTH RITLAND
JOYCE ROADMAN



KENNETH ROLLINS
LOIS ROORDA
KENNETH RUBY





MARIAN SANDERS
GEORGE SAUNDERSON
AL SAWIN



ROY SCHELLENGER
WILLIAM SCHNEIDER
JOSEPHINE SHAWVER



HELEN DOROTHY SHOEMAKER
BETTY SMITH
MARY ELLEN SNYDER



DORIS SPANGLER
JIM STRAIT
MILES TOMMERAASEN



CLARE VANDEN BROEK
WILLIAM WACHTER
TED WALENSKY



DOROTHY WELLS
FLOYD WENNERSTEN
BEVERLY WERDEN



RUTH WHITE
BETTY JANE WICKLUND
DOROTHY WILLIAMS



ROBERT YEAGER



Class of 1945



Macur, Faul
Hemmingsen, Adams

President Joe Macur
 Vice-President Duane Faul
 Secretary-Treasurer Joyce Hemmingsen
 Student Council Representative..... Florence Jane Adams



FLORENCE JANE ADAMS
 MARTHA ALSTON
 CHARLES BERKSTRESSER



MARCIELLE BOHN
 GEORGE BORNHOLTZ
 DONALD BOYSEN



DON BRINK
 JOE BURKLE
 BETTY CAIRY



EDNA CAVETT
 ARLENE CHAPMAN
 PERRY COLLINS



MARY COWLING
 MARGARET DAVIES
 FRANCES DEIRUP





MARGARET DIETER
ARLENE DORNBUSCH
DOROTHY DuBOIS



GLENNYS EICK
JOAN ELSINGA
GORDON FAIRCHILD



NEVA FAIRCHILD
PHYLLIS FALK
DUANE FAUL



DON FERGUSON
RUTH FROHWEIN
ELAINE GODTFRING



HARLEY GRANTHAM
EILEEN GUSE
BONITA HAHN



CLARICE HARLAN
JIM HARRINGTON
LOIS HELD



WARREN HELD
JOHN HELM
JOYCE HEMMINGSEN



LOWELL HENRY
IRENE HINRICHS
WILLIAM HOEFER



GEORGE HOLCOMB
JOSEPHINE HOLDCROFT
VIRGINIA HOWE



LEAH HUXTABLE
DONNA IRVINE
ROSEMARY JACOBSON





FORREST JENSEN
 FRED JENSEN
 MILDRED JENSEN

JEANETTE KAHOUN
 HARRIETT KEITH
 WILLIAM KELLER

WARREN KINGSBURY
 BERTON KOLP
 MARGARET LABBITT

CLARICE LANE
 GUS LEASE
 BETTY LEGET

MARY JANE LOGAN
 VELMA LUNDT
 JOE MACUR

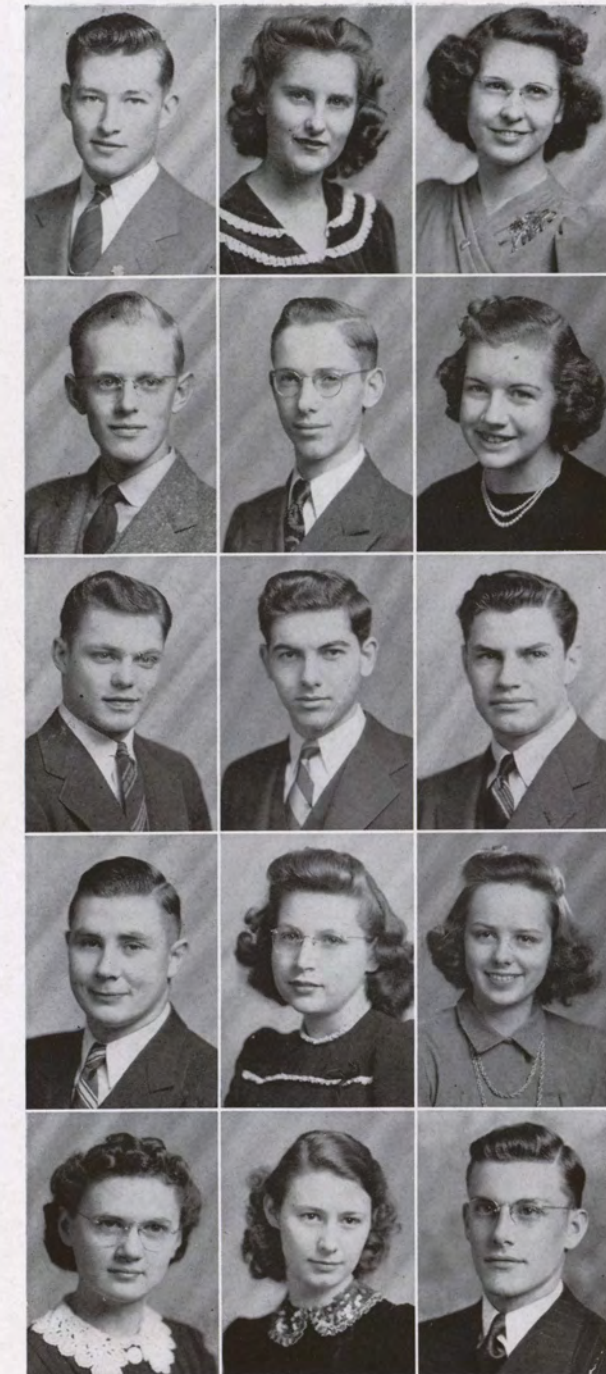
CLIFF MAHRT
 NORMA MILLER
 LILA MINNIG

DEAN NELSON
 GERALD PARKS
 GERALDINE PRAGER

JAY RANCE
 DONALD RHOADES
 FRANK ROBINSON

JOHN ROGERS
 CAROLYN RUTLEDGE
 LEONE SARGEANT

EARLENE SCHENCK
 PATRICIA SCHNEIDER
 DON STONE





LAUREL STROBEL
PERON SWALLEY
ARLENE SWANSON



CORABEL TEACHOUT
MARY JANE TERRY
DONNA THOMPSON



ELMER VANDER BERG
DORCAS VOIGT
VERA WONG



DARREL WARNER
DON WATERMAN
MARY WEATHERBY



CAROL WENZEL
TOM WILLIAMS
MARY WOOD



ELSIE JEAN WOODFORD

MARIE YANNEY

Second Semester Students

Name	FRESHMEN	Home
Kenneth Bolton	Sioux City, Iowa
Corinne Cooley	Sioux City, Iowa
Phyllis Downey	Sioux City, Iowa
Jack Fleming	Sioux City, Iowa
Roberta Haitz	Sioux City, Iowa
Alice Mahany	Sioux City, Iowa
Warren Moore	Sioux City, Iowa
Naomi Murray	Sioux City, Iowa
Mariana Porter	Sioux City, Iowa
Bob Roberts	Sioux City, Iowa
Robert Rogers	Sioux City, Iowa
Gust Scaboo	Sioux City, Iowa
Mary Jo Shipway	Sioux City, Iowa
Art Washburn	Sioux City, Iowa
Donald Weaver	Sioux City, Iowa
Lois May White	Sioux City, Iowa
Tom Williams	Sioux City, Iowa
John Wood	Sioux City, Iowa
Mary Wood	Sioux City, Iowa

SOPHOMORES

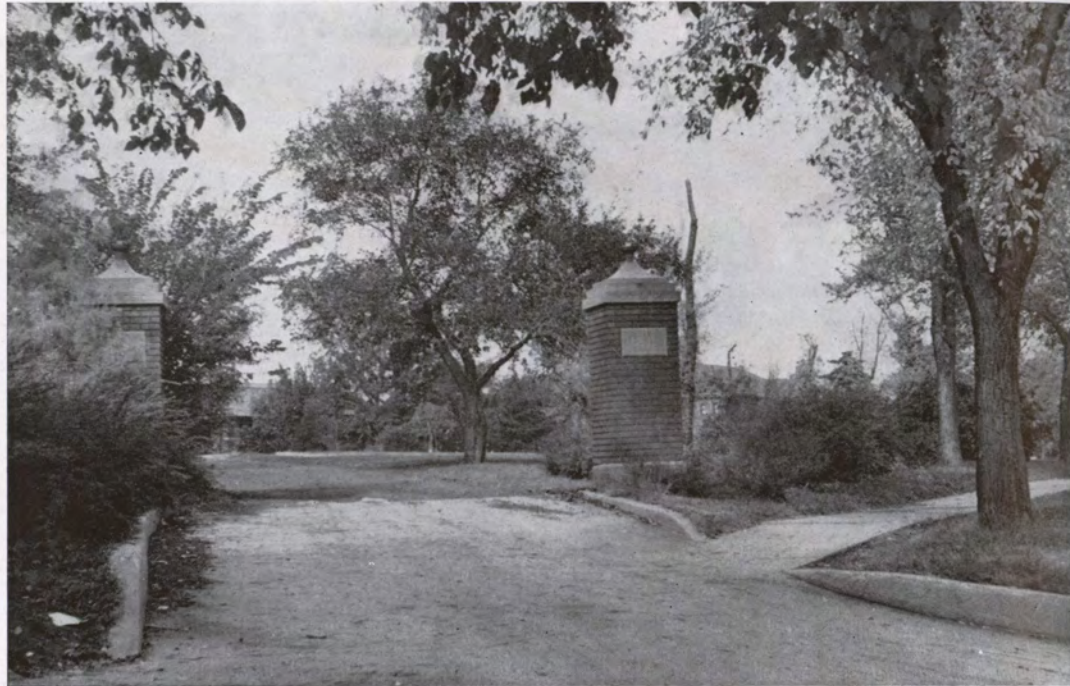
Kenneth Dealy	Sioux City, Iowa
Kay Deirup	Sergeant Bluff, Iowa
Carol Goltz	Sioux City, Iowa
Betty Mitchell	South Sioux City, Nebraska
Harriett Pratt	Kingsley, Iowa
John Reinking	Sioux City, Iowa
Edward Smith	Sioux City, Iowa

JUNIORS

Eleanor Clark	Burlington, Iowa
Shirley Henshaw	Sioux City, Iowa
Frank Kahoun	Sioux City, Iowa
Lucile Roberts	Sioux City, Iowa



ORGANIZATIONS



*Morningside, Morningside,
Best of any school on earth
You'll soon decide.
Skies so blue, friends so true,
Take me back to student days
At Morningside.*



Student Council



Back Row: Graber, Macur, Walter, Whicher, Kerzie, Saunderson, Stiles.
Front Row: Wood, Kingsbury, Jones, Kolp, Adams.

John Kolp.....President (First Semester)
Francis Jones.....President (Second Semester)
Bernard FeikemaVice-President
Ruth KingsburySecretary-Treasurer

The Student Council is composed of the presidents and council representatives of each class, with delegates also elected from the conservatory, W. S. G. A., "M" Club, and W. A. A. The editor of the Collegian Reporter, and the presidents of Pi Kappa Delta and M. C. A. are also given a seat on the council.

Many college functions are directed and promoted by this organization. Homecoming activities, including the barbecue, parade, and the dance are sponsored by the council. Other highlights of the program this year include: Freshman-Sophomore Day, the winter formal, the "Power Jive," campus clean-up day, the Senior Farewell dance, and walkout day.



Agora



Top Row: Kingsbury, Coss, Smith, Hoefler.
Bottom Row: Hiler, Buchner, Odegard, Logan.

Agora was organized in 1914 by Agnes B. Ferguson for the purpose of a closer fellowship and cooperation for the girls in order to gain for them all the opportunities and advantages that should be obtained in the pursuance of a college life. Every girl in college belongs to Agora, which operates through a representative board elected by popular vote of all the girls.

The first girls' glee club on the campus was organized through Agora in 1916. Also the first girls' inter-collegiate debate team was started that year.

The most important movement of Agora is the Campus Sister Club of junior and senior girls, who act as "big sisters" to the new freshman girls each year. Other outstanding events during the year are occasional teas, a carnival-dance, and the Mother-Daughter banquet near Mother's Day in the spring.

The Agora board consists of Ruth Kingsbury, president; Florence Coss, vice-president; Vera Smith, secretary; and Donna Hoefler, treasurer.

W. S. G. A.



Top Row: Jones, Pfeiffer, Boyd, McDonald.
Bottom Row: Rohweder, Hiler, Hoefler, DeVries.

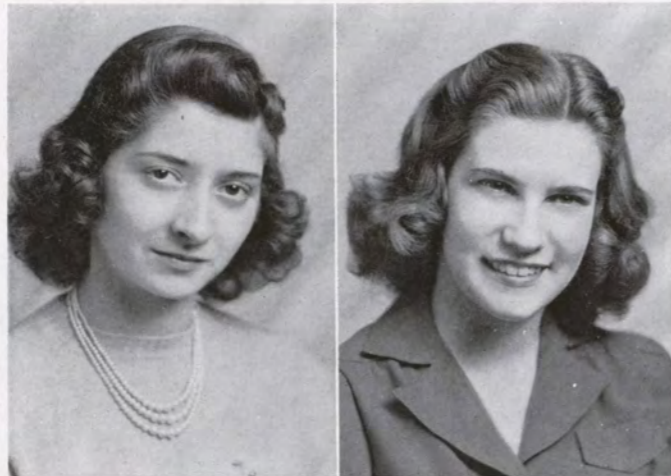
The Women's Self Governing Association, composed of all women residing in the dormitory, has as its purpose the promotion of friendships, and unity among the house residents, the sharing in the responsibilities of group living, and maintenance of high standards in student life.

The honor court is the governing board of the organization, acting upon all matters pertaining to social regulations.

W. S. G. A. sponsors two formal dinner dances during the year and various other parties such as the Hallowe'en party, tree trimming party, and frequent buffet suppers.

The officers for the past year have been: President, Dorothy Jones; Vice-President, Mildred Pfeiffer; Secretary, Betty Boyd; Social Chairman, Dorothy Ann De Vries; Senior Hall Chairman, Mildred Pfeiffer; Junior Hall Chairman, Clarice Rohweder; Sophomore Hall Chairman, Muriel Hiler; Freshman Hall Chairman, Betty Hoefler; Social Director, Ruth McDonald.

Ishkoodah



Howe, Leget

Ishkoodah is an organization for all the freshman girls on the Morningside campus. Meetings are held every two weeks in the Union Room with Mrs. Glen Rogers as the adviser.

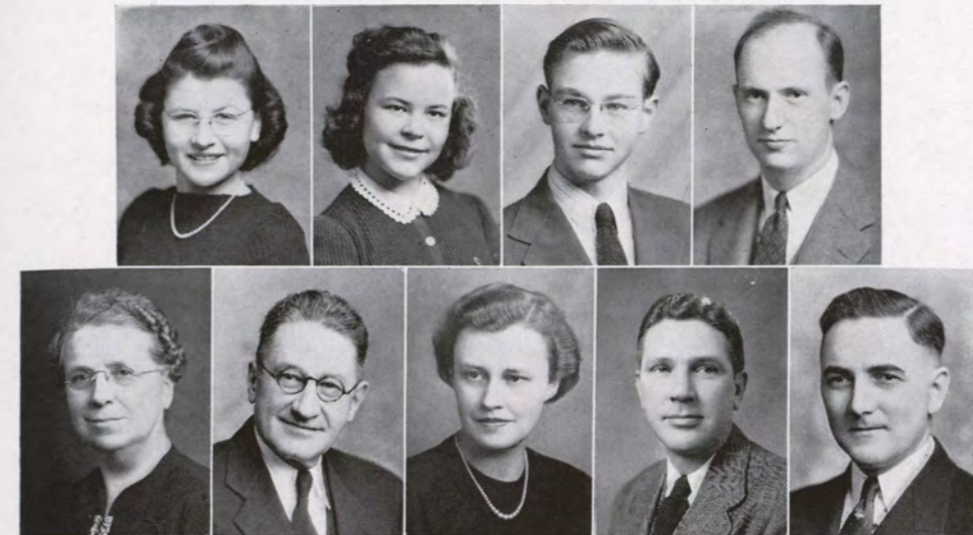
The organization sponsored a formal dance, had a float in the Homecoming parade, and enjoyed several teas during the year.

Officers for the first semester were: Virginia Howe, President; Jean Woodford, Vice-President; Glennys Eick, Secretary-Treasurer; Maxine Carlson, Sergeant-at-Arms; and Rosemary Jacobson, Representative to Agora. Those serving the second semester were: Betty Leget, President; Laurel Strobel, Vice-President; Mary Jo Shipway, Secretary-Treasurer; Marcielle Bohn, Sergeant-at-Arms; and Mary Jean Logan, Representative to Agora.



Logan, Alston, Cavett, Wood, Godtfring, Strobel, Teachout, Cairy

Board of Control



Top Row: Pooley, Downey, Holcomb, Gusteson.
Bottom Row: Mills, Kanthlener, Pearson, McClure, Gwinn.

The Board of Control of Student Publications has jurisdiction over the Collegian Reporter, the Sioux, and Manuscript magazine. The editors and business managers of these publications are appointed from applications which are submitted, and advice is given on matters of publication.

Equal representation is given to the faculty and the student body. Professor Mirah Mills is chairman of the board. Also serving from the faculty are: H. F. Kanthlener, I. J. Gwinn, Miss Phyllis Pearson, and T. N. McClure. The student representatives are: Maxine Pooley, senior; Gwendolyn Downey, junior; Bob Tracy, sophomore; George Holcomb, freshman; and Ray Gusteson, representative at large. The editor and business manager of the Collegian Reporter are ex-officio members without vote.

The Sioux

EditorHelen Johnson
 Business Manager.....Raymond Gusteson
 Faculty Adviser.....Jason M. Saunderson
 Associate Editor.....Florence Coss
 Literary Editors.....Kathryn Madison, Ferne Dunn
 Senior Editor.....Wally Hanson
 Junior Editor.....Mariellen Rifenbark
 Men's Sports Editor.....James Steck
 Women's Sports Editor.....Hope Faul
 Music Editor.....Dorothy Ann DeVries
 Dramatics Editor.....Robert Caine
 Forensics Editor.....Robert Hamel
 Photography Editor.....Kathleen Schatz
 Snapshot Editor.....Helen Weaver
 Photographers.....George Saunderson, Darrel Warner
 ArtistRobert Postin
 TypistJoyce Roadman
 PhotographyYoungberg Studios
 Printing.....Verstegen Printing Company
 Engraving.....Journal-Tribune Publishing Company



Back Row: Caine, Hanson, Warner, Gusteson, Rifenbark, Dunn, Collier, Steck, DeVries, Saunderson.
 Seated: Coss, Weaver, Johnson, Roadman, Madison, Schatz.

The Collegian Reporter

Editor-in-ChiefLauree Wood
 Business Manager.....James Bolton
 News Editor.....Marjorie Foster
 Copy Editor.....Mary Patterson
 Sports Editor.....Cliff Mahrt
 Music Editors.....Harry Werder, Gloria Odegard
 Special Writers—Mina Karcher, Don Stone, Ruth White,
 Lucille Mathena, Maxine Pooley, Faith Buchner, Roy
 Schellenger, Ted Walensky, George Holcomb, Robert
 Tracy, Don Rhoades
 Reporters—Eleanor Clark, Bette Buell, Mary Ellen Snyder,
 Lois Helm, Dorcas Voigt, Ruth Walker, Janice
 Collier



Back Row: Holcomb, Mahrt, Stone, Karcher, Helm, Stiles, Clark, Odegard, Werder.
 Seated: Foster, Goltz, Patterson, Wood, Bolton, Walker, Buell.

Beta Beta Beta



Gandek

Charles GandekPresident
 Walter YeagerVice-President
 Phyllis ThorngreenSecretary-Treasurer
 Dr. T. C. Stephens.....Faculty Adviser

Beta Beta Beta is the national honorary biological fraternity, founded to stimulate interest in the biological sciences and to promote high standards of scholastic achievements among biology students. Tau chapter has sponsored meetings twice a month this year, its programs featuring colored films, talks by local doctors, and student quizzes.

Eta Sigma Phi



Back Row: Smith, Madison, Shkurenky, Karcher, Caine.
 Bottom Row: Fischer, Dimmitt, Murray.

William C. Smith.....President
 Barbara BarryVice-President
 Mina KarcherSecretary-Treasurer
 Miss Lillian E. Dimmitt.....Faculty Adviser

Nu chapter of Eta Sigma Phi recognizes proficiency in the study of Greek and Latin. The organization proposes to increase interest in these languages and to promote further study in the classic works. In demonstration of this ideal, Nu chapter will present certificates of achievement to Latin students and a medal for the highest ranking Virgil student in the Sioux City high schools.

Kappa Chi



Back Row: Stiles, Caine, Dueck, Graubner, J. Gedwillo, Payne, Garlock, DeGarmo, Anderson, Gosso, Smith, LaSuer.
 Seated: Madison, Shkurenky, Kirby, Kitterman, Wells, Schenck, Mahany, A. Gedwillo.

Robert CainePresident
 Horace GraubnerVice-President
 Dorothy WellsSecretary
 Donald LaSuerTreasurer
 Dr. Stanley Carson.....Faculty Adviser

This organization aims to develop fellowship among Christian workers and encourage any program, project, or movement that lies within that sphere. Any student who is studying for the ministry or for full time Christian service is eligible for membership. There are twenty-five active members this year and five honorary members among the faculty.

Kappa Chi expanded last year into a national organization, and today boasts five local chapters on sister campuses.

Phi Sigma Iota



Johnson

Helen JohnsonPresident
 Helen AndersonSecretary
 Henry Kanthlener.....Corresponding Secretary and Treasurer

Phi Sigma Iota, national honorary Romance Language fraternity, is an organization for students of the Romance Languages of junior and senior classification. The purpose of the organization is to foster better relations between nations and to arouse an interest in international culture. Monthly meetings are held at which members read research papers pertaining to the languages. Other members this year were Marjorie Foster and Ruth McDonald. Henry Kanthlener is the faculty adviser.

Pi Gamma Mu



Back Row: Emme, Goodenow, Gusteson, Anderson, Tweito, Gandek, Caine.
Front Row: Garwood, Thorngreen, Barry, Hall, Baker, Roland, Miller.

Raymond Gusteson President
Phyllis Thorngreen Vice-President
Doris Hall Secretary
Miss Marcia McNee Treasurer

Pi Gamma Mu is the national honorary social science fraternity. The society was founded to encourage the study of society and all social questions which are of concern to the progress of man. It encourages scholarship and character building activities. Admission to the organization is a reward for such achievement.

Sigma Tau Delta



Back Row: Mills, Karcher, Coss, Rifembark, Thorpe, Runge, Bootjer, Wood.
Front Row: Stoakes, Kingsbury, Madison, Swanson.

Lauree Wood President
Kathryn Madison Vice-President
Mina Karcher Secretary-Treasurer
Miss Mirah Mills Faculty Adviser

Gamma Beta is the Morningside chapter of Sigma Tau Delta, national English fraternity, membership in which is held by English majors of high scholastic standing. The group seeks to maintain high literary standards and to increase interest and knowledge in effective language usage. This year's program was a study of classic English novels.

Psi Chi

President Stanley Anderson
Vice-Presidents Doris Hall, Raymond Gusteson
Secretaries Mary Patterson, Mina Karcher
Treasurers Dorothy Luchsinger, Mildred Pfeiffer



Top Row: Adams, H. Anderson, S. Anderson, Baker, Coss.
Second Row: Gandek, Gusteson, Hall, Johnson, Karcher.
Third Row: Luchsinger, Miller, Patterson, Pfeiffer, Pullman.
Fourth Row: Rifembark, Roland, Schnoor, Thorngreen, Wells.
Bottom Row: Emme, Hill, McNee, Pearson, Tweito.



Zeta Sigma



Thomas

Virginia ThomasPresident

The local honor scholastic society has a twofold objective: to give recognition to those students whose scholastic records show evidence of special merit, and to promote the ideals of true scholarship. To become eligible for Zeta Sigma a student must meet all the requirements for graduation and have a scholarship average of three and one-third points.

Alumni



Gwinn

Mrs. G. V. Green.....President
William WolleSecretary
Ira J. Gwinn.....Treasurer

The alumni organization serves as a means of keeping Morningside graduates and ex-students in close connection with the college. The annual dinner initiating new members, and the Homecoming dinner were held this year.

Cosmopolitan Club



Carlson

Margie CarlsonPresident
James DemetroulisVice-President
Stella MillerSecretary
Robert CaineTreasurer
Dr. George Hill, Dr. Stanley Carson.....Faculty Advisers

In 1926, a chapter of the National Association of Cosmopolitan Clubs was established at Morningside. The club has a twofold purpose: to create a spirit of good will and fellowship among students of various nationalities at Morningside, and to learn more about customs and attitudes of people in foreign lands. At monthly dinner meetings the club was served typical meals of other countries, some of which were American, Mexican, Chinese, Dutch, English, Irish, Negro, and Greek.

Morningside Future Teachers' Club



Back Row: Murray, Bootjer, Gusteson, Hoefler, Kirkpatrick.
First Row: McNee, Mathena, Luchsinger, Baker.

Lucille MathenaPresident
Dorothy LuchsingerVice-President
Phyllis BakerSecretary-Treasurer
Dr. J. E. Kirkpatrick, Miss Marcia McNee.....Faculty Advisers

Morningside Future Teachers' Club was organized for the first time this year for the purpose of bringing together those students who are preparing for educational careers; familiarizing the members with the problems and opportunities in the profession; better equipping them for their work in education; cooperating with state and national education associations; helping raise the standards of the education professions. Membership is open to those who have completed or are enrolled in any professional course in education. The club is affiliated with the Iowa State Teachers and National Education Associations.



Back Row: Carlson, Forrester, Reese, Jacobson, Pfeiffer, Anderson, Hiler.
Second Row: Hawthorn, Barry, Wood, Berg, Hoefler, Johnson, Thorpe, Karcher, Rasmussen, Hall, Hale.
Third Row: Davies, Bane, Murray, Eick, Laird, McCluskey, Merrill, Lane, Smith, Smith.

Manuscript Club



Back Row: Mills, Karcher, Foster, Logan, Bootjer, Thorpe.
Front Row: Faul, Madison, Tracy.

Kathryn Madison	President
Eleanor Thorpe	Vice-President
Marjorie Foster	Secretary-Treasurer
Mina Karcher	Librarian
Miss Mirah Mills.....	Faculty Adviser

Manuscript Club was organized March 18, 1938, under the guidance of Professor Lynn Beyer for the purpose of encouraging creative writing among the students of Morningside College. Membership, open to any student on the campus, is based upon the approval of an original manuscript, but is limited to sixteen members. Programs consist of the reading and criticism of original manuscripts by the members and those submitted by prospective members. The club sponsors and edits *Manuscript* magazine, of which Gwendolyn Downey is editor this year.

M. C. A.



Back Row: Snyder, Berkstresser, Pratt, Lane, Anderson, Carson.
Middle: Emme, Berg, Mahany, White, Keller.
Seated: Gossoo, Madison, Lindsay, Wells, Stiles.

Leonard Stiles	President
Francis Brockman	Vice-President
Louise Madison	Secretary-Treasurer
Dorothy Wells	Y. W. C. A. Representative
Ivan Gossoo	Y. M. C. A. Representative
Miss Minetta Miller, Mr. Mendal Miller.....	Faculty Advisers

The purpose of the Morningside Christian Association is to further student fellowship and help the students to formulate a worthwhile philosophy of life. Activities under the direction of M. C. A. include a drive for Hwa Nan College in China, Religious Emphasis Weeks, firesides in faculty homes, and assistance in presenting New Student Days.

Pre-Engineers



Top Row: Leachman, Hempstead, Wagstaff.
Middle Row: Stiles, Haskins, Green.
Bottom Row: Graber, Knudsen, Adams, Gwinn.

OFFICERS

	First Semester	Second Semester
President.....	Fuller Haskins	Robert Hempstead
Vice-President.....	Robert Hempstead	James Leachman
Secretary.....	Lyle Knudsen	Robert Wagstaff
Treasurer.....	James Adams	Robert Green
Historian.....	Leonard Stiles	Leonard Stiles

The Pre-Engineers Club of Morningside College is a group of young men organized to further interest in the exact sciences and to provide opportunity for those members interested in this department to have social gatherings.

The ultimate aim of the club is to provide for its members a greater background in their vocational field. The club does this in its weekly luncheon and business meeting where part of the program is dedicated to engineering reports and lectures by club members and outside speakers.

The major accomplishment during the first semester of each year is the planning and presentation of its annual Engineers' Night program. In the second semester the Pre-Engineers hold their formal dinner dance at one of Sioux City's downtown hotels.

Members of the Pre-Engineers Club who are interested in special fields may join the affiliate clubs: the Aeronautics Club, Theory Club, Radio Club, Chemistry Club, and Photography Club, where they may engage in more specialized projects.



Top Row: Reynolds, Kern, Laffoon, Leachman, R. Hempstead.
Second Row: Sawin, Ladwig, Stiles, Postin, Meents, Wagstaff.
Third Row: Parry, Miller, Haskins, Williams, Wilson, Parsons.
Fourth Row: Berkstresser, Knudsen, Hoefler, Adams, Boysen, D. Hempstead.
Fifth Row: Parker, Clayton, Wachter, Schneider, Green.
Bottom Row: Parks, Roehrs, Scaboo, Chambers, Graber, Gwinn, Van Horne.

Who's Who



Top Row: Johnson, Jones, Kingsbury, Madison, Wood.
Bottom Row: Anderson, Caine, Gusteson, Haskins, Jones, Kolp.

Stanley Anderson
Robert Caine
Raymond Gusteson
Fuller Haskins
Helen Johnson
Dorothy Jones

Francis Jones
Ruth Kingsbury
John Kolp
Kathryn Madison
Lauree Wood

Election to Who's Who Among Students in American Universities and Colleges came as an honor to eleven seniors at Morningside College this year, an honor which is the equivalent of such others as Phi Beta Kappa or the Rhodes Scholarship. Proving that they are outstanding students and assets to their school, the seniors were chosen on the basis of character, leadership, scholarship, and potentialities. Biographies of these people appear in this year's issue of Who's Who Among Students in American Universities and Colleges, a book which was first published in 1934 to give recognition to deserving seniors and to give reliable information about these seniors to interested people in the business world.

Campus Review



Holcomb, Mahrt, Walensky, Stone

"Campus Review for '42! Presenting educational news and notes and musical entertainment of interest to everyone! This program is written and produced by students of Morningside College."

Thus is the Morningside College radio program introduced every Friday afternoon at 4:45 in the studios of KTRI in the Commerce Building. Campus Review had its beginning on December 6, 1941, with Ted Walensky, director and producer; and Don Stone, Cliff Mahrt, and George Holcomb as the board of directors.

The intention and policy of this program is to feature and publicize happenings of interest at Morningside College. From time to time various organizations of prep schools and the local colleges are guests of Campus Review. The underlying purpose is to secure a more complete knowledge of the functions and operations of a radio station. Each member of the group is given full opportunity to take part in every phase in the production of the program which includes script writing, selection of music, program timing, announcing, scouting for talent, and participation in the program itself.

Material used for Campus Reviews has included a wide variety of entertainment such as personal interviews, panel discussions, swing and classical instrumental aggregations, vocal groups, athletic activities, and programs for defense. The outstanding musical group to appear on the series was the Briar Cliff College Choir under the capable leadership of Sister Jeanette. Interesting interviews and discussions have included Dr. E. A. Roadman, Dean Hill, Dr. Carson, Eva Carlsson, Professor John Garwood's Economics class, Student Body Presidents John Kolp and Francis Jones, and numerous other Morningsiders.

Professor John Felton served as adviser for this project.



Top Row: Ashby, Bergquist, Bootjer.
 Second Row: Boyd, Capellen, Coss, Cox, Dawson.
 Third Row: DeVries, Fairchild, French, Hageberg, Hale.
 Fourth Row: Hedeem, Hoefer, Hofmann, H. Johnson, T. Johnson.
 Fifth Row: King, Niemeyer, Rannells, Rohweder, Schnoor.
 Bottom Row: Carter, Shoemaker, Smith, Swisher, Spangler.

Kappa Pi Alpha



"Happily, Bravely,
 Faithfully"

OFFICERS

	<i>First Semester</i>	<i>Second Semester</i>
President.....	Helen Johnson	Betty Bootjer
Vice-President.....	Marie Bergquist	Clarice Rohweder
Recording Secretary.....	Betty Bootjer	Kathleen Schnoor
Corresponding Secretary.....	Vera Smith	Evelyn Hagberg
Treasurer.....	Florence Coss	Mary Cruikshank
Chaplain.....	Vera Smith	Miriam Cox
Critic.....	Florence Coss	Ardelle Capellen
Sergeant-at-Arms.....	Mary Cruikshank	Dorothy Dawson
Librarian.....	Lauretta King	Thelma Johnson
Hall Chairman.....	Clarice Rohweder	Donna Hoefler
Social Chairman.....	Marjorie Swisher	Florence Coss
Reporter.....	Marjorie Swisher	Betty Lou Hale

Faculty Adviser: Margaret T. Thomas

MEMBERS

<i>Seniors</i>	<i>Juniors</i>	<i>Sophomores</i>
Marie Bergquist	Ardelle Capellen	Helen Ashby
Betty Bootjer	Florence Coss	Betty Boyd
Helen Johnson	Mary Cruikshank	Betty Lew Carter
Lauretta King	Dorothy DeVries	Miriam Cox
Clarice Rohweder	Mary Fairchild	Dorothy Dawson
	Kathleen Schnoor	Harriet French
	Vera Smith	Evelyn Hagberg
	Marjorie Swisher	Betty Lou Hale
		Carol Hedeem
		Donna Hoefler
		Ruth Hofmann
		Thelma Johnson
		Willo Jean Niemeyer
		Cecil Rannells
		Lucile Roberts
		Helen Dorothy Shoemaker
		Doris Spangler





Top Row: Anderson, Baker, Barry, Beckwith.
 Second Row: Bridge, D. Brown, K. Brown, Christiansen.
 Third Row: Collier, Dunn, Evans, M. Foster.
 Fourth Row: M. Foster, Harrison, Held, Hoefer, Jacobson.
 Fifth Row: Kingsbury, Madsen, McKillip, Miller, Odegard.
 Sixth Row: Pooley, Rifensbark, Ritland, Roadman, Slowey.
 Bottom Row: Stickels, Swanson, Weaver, Werden, Wood.

Kappa Zeta Chi



"To be rather than
to seem"

OFFICERS

	<i>First Semester</i>	<i>Second Semester</i>
President.....	Kathryn Brown	Lauree Wood
Vice-President.....	Phyllis Baker	Ruth Kingsbury
Recording Secretary.....	Dorothy Brown	Jean Runge
Corresponding Secretary.....	Helen Weaver	Harriett Swanson
Treasurer.....	Barbara Barry	Barbara Barry
Social Chairman.....	Lauree Wood	Helen Anderson
First Critic.....	Ruth Kingsbury	Kathryn Brown
Second Critic.....	Janice Collier	Helen Weaver
First Directress.....	Maxine Foster	Mariellen Rifensbark
Second Directress.....	Harriett Swanson	Betty Lou Beckwith
Ushers.....	Maxine Pooley	Beverly Werden
	Betty Hoefer	Roberta Held
Chaplain.....	Helen Anderson	Dorothy Brown
Librarian.....	Mariellen Rifensbark	Elinor Jacobson
Reporter.....	Jean Runge	Inez McKillip

Faculty Adviser: Ethel Ruth Murray

MEMBERS

<i>Seniors</i>	<i>Juniors</i>	<i>Sophomores</i>	
Phyllis Baker	Helen Anderson	Betty Lou Beckwith	Elinor Jacobson
Barbara Barry	Dorothy Brown	Frances Bridge	Evelyn Madsen
Kathryn Brown	Mariellen Rifensbark	Vernice Christiansen	Inez McKillip
Janice Collier	Jean Runge	Ferne Dunn	Stella Miller
Maxine Foster	Margaret Slowey	Janet Evans	Gloria Odegard
Betty Hoefer	Harriett Swanson	Marjorie Foster	Ruth Ritland
Ruth Kingsbury		Edith Harrison	Joyce Roadman
Maxine Pooley		Roberta Held	Beverly Werden
Marian Stickels			
Helen Weaver			
Lauree Wood			





Top Row: Bruhn, Buchner, Buell, Carlson.
 Second Row: Carlsson, De Graaf, Downey, Garretson, Hawthorn.
 Third Row: Hiler, Jones, Kitterman, Lamb, Luchsinger.
 Fourth Row: L. Madison, K. Madison, Mathena, Patterson, Pfeiffer.
 Bottom Row: Roland, Schatz, Stoakes, Thorngreen, Walker.

Alpha Sigma



"The useful and the pleasing"

OFFICERS

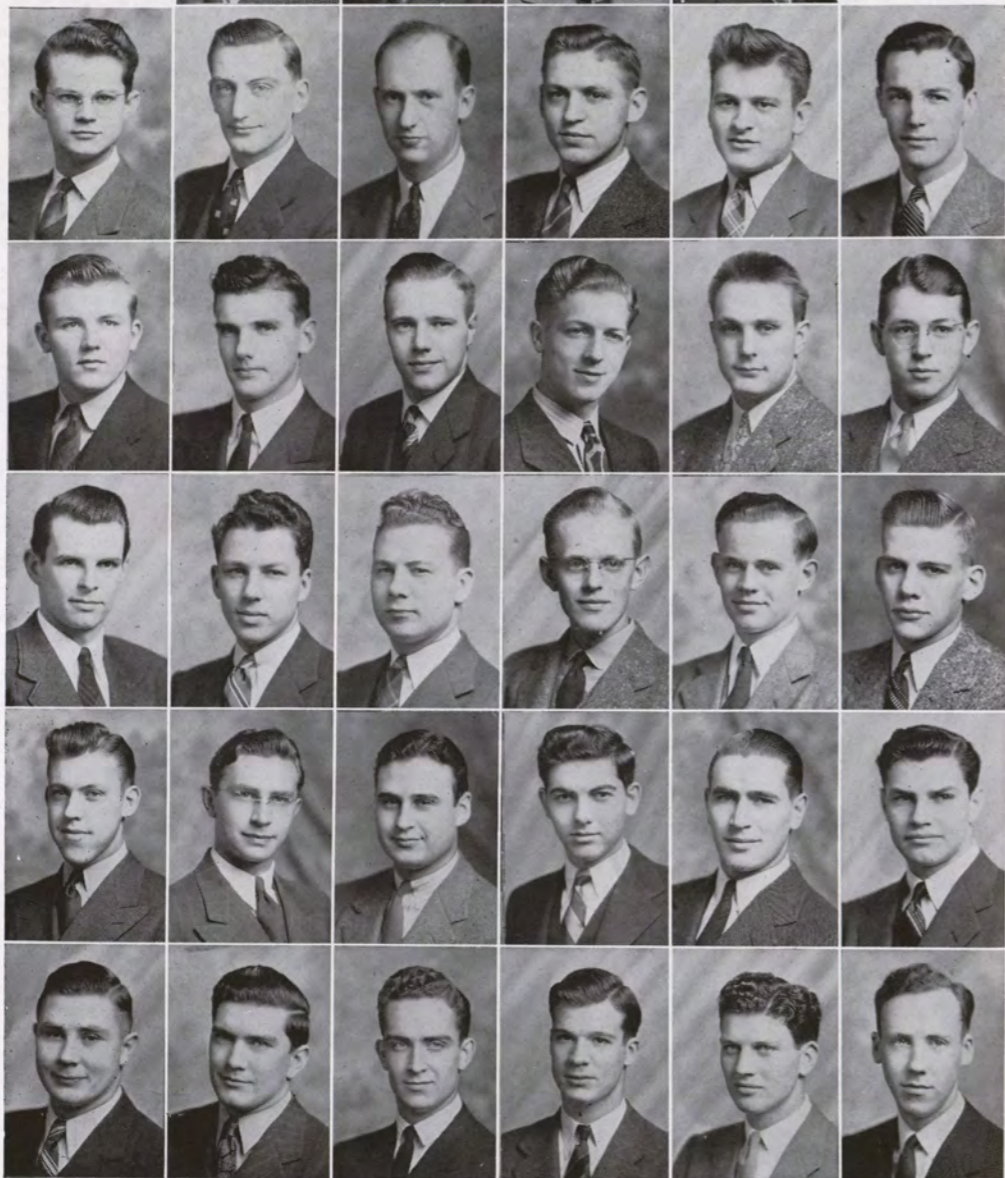
	<i>First Semester</i>	<i>Second Semester</i>
President.....	Phyllis Thorngreen	Phyllis Thorngreen
Vice-President.....	Jean Jones	Mildred Pfeiffer
Recording Secretary.....	Gwen Downey	Louise Madison
Corresponding Secretary.....	Muriel Hiler	Eva Carlsson
Treasurer.....	Ferne Roland	Ferne Roland
Critic.....	Kathleen Schatz	Gwen Downey
Chaplain.....	Louise Madison	Clarice Hawthorne
Pianist.....	Margie Carlson	Ruth Walker
Usher.....	Mary Patterson	Muriel Hiler
Reporter.....	Kathryn Madison	Mary Patterson
Historian.....	Mildred Pfeiffer	Kathleen Schatz

Faculty Adviser: Pearl Amundsen

MEMBERS

<i>Seniors</i>	<i>Juniors</i>	<i>Sophomores</i>
Margie Carlson	Faith Buchner	Luella Bruhn
Muriel Hiler	Gwen Downey	Bette Buell
Jean Jones	Lainys Kitterman	Eva Carlsson
Dorothy Luchsinger	Louise Madison	Lubertha De Graaf
Kathryn Madison	Mary Patterson	Jane Garretson
Lucille Mathena	Virginia Stoakes	Clarice Hawthorn
Mildred Pfeiffer	Ruth Walker	Marvel Lamb
Ferne Roland		Alice Shkurensky
Kathleen Schatz		Dorcas Voigt
Phyllis Thorngreen		





Top Row: Adams, Bennett, Bolton.
 Second Row: Bomgars, Bornholtz, Burkle, Danielson.
 Third Row: de Vries, Goodenow, Gusteson, R. Held, W. Held, Helm.
 Fourth Row: D. Hempstead, R. Hempstead, Henry, Jones, Kennedy, F. Kingsbury.
 Fifth Row: W. Kingsbury, B. Kolp, J. Kolp, Dean Nelson, Don Nelson, Obye.
 Sixth Row: Postin, Rehder, Reynolds, Rhoades, Robar, Robinson.
 Bottom Row: Rogers, Saunderson, Schellenger, Warner, Waterman, Wellmerling.

Alpha Tau Delta



"Smoothness in manner,
 strength in all things"

OFFICERS

	<i>First Semester</i>	<i>Second Semester</i>
President.....	Raymond Gusteson	John Kolp
Vice-President.....	Freddie Wellmerling	Wilson Reynolds
Secretary.....	James Adams	James Adams
Treasurer.....	James Bolton	Earl Goodenow
Sergeant-at-Arms.....	Dick Sullivan	Charles Obye
Chaplain.....	Bob Bennett	Berton Kolp
Pledgemaster.....	Lamar Jones	Douglas Hempstead
Social Chairman.....	George Saunderson	Warren Kingsbury
House Chairman.....	Gene Kennedy	Charles Obye

MEMBERS

<i>Seniors</i>	<i>Sophomores</i>	<i>Freshmen</i>
Bob Bennett	Harold Bomgars	George Bornholtz
James Bolton	Steve de Vries	Joe Burkle
Earl Goodenow	Duncan Harper	Warren Held
Ray Gusteson	Bob Held	John Helm
Bob Hempstead	Douglas Hempstead	Lowell Henry
Gene Kennedy	Warren Johnson	Warren Kingsbury
John Kolp	Lamar Jones	Berton Kolp
Freddie Wellmerling	Donald Nelson	Roger McKellips
	Charles Obye	Max Muckey
	Robert Postin	Dean Nelson
	George Saunderson	Don Rhoades
	Roy Schellenger	John Rogers
	Laurin Snyder	Darrel Warner
	Dick Sullivan	Sherman Young

PLEDGES

Charles Burow Bob Danielson George Hartley George McBride Don Waterman



The Greeks



ATHLETICS





*“On, Morningside, foemen deride,
Fight for the old Maroon”*



In Appreciation of Jason M. Saunderson



Thirty years of loyal and enduring service to one college is a record of which any man may well be proud. Thus it is in the case of Coach Jason M. Saunderson, who has devoted such a large part of his life to coaching football at Morningside College.

“Saundy” spent his undergraduate days at Albion College and his first coaching position was at South Dakota State. After two years at Brookings and one year at the University of the South at Sewanee, Tennessee, he came to Morningside, and for thirty years has gained for himself an enviable name as a coach and leader.

Because of an injury sustained a year ago, he has been granted a year's leave of absence from the campus.

To Jason M. Saunderson—coach, gentleman, and true man of the “M”, Morningside College pays tribute and respect.

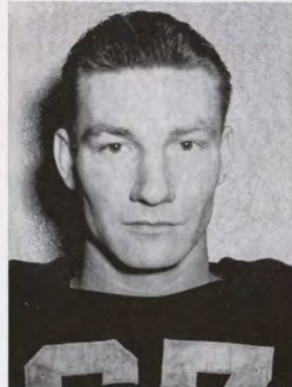
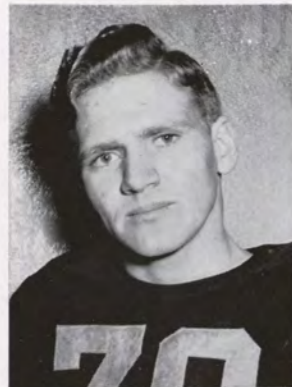
Varsity Football



JASON M. SAUNDERSON
Head Football Coach



BERNARD J. SCHERER
Line Coach



Feikema
Goodenow
Haefler
Hanson

THE SEASON

Morningside began the 1941 season by scoring a flashy 31-6 victory over Macalester. In the starting lineup for the Maroons were five sophomores and the whole squad showed a great deal of speed, although they lacked some of the weight which they had had in previous years. The outstanding man for the Maroon offensive was Charles Dirr, who scored three touchdowns. The final score was 31-6, with all of Morningside's points being made in the first half.

The first conference game was with North Dakota State at Fargo. Morningside's hopes for a conference championship began to zoom as we came in on the long end of a 25-6 score. The hard-charging forward wall of the Maroons stopped the Bisons' running plays and it was only as the result of a pass that North Dakota was able to score at all.

The first defeat of the season came as a result of the game with Gustavus Adolphus, the final score being 12-0. The Maroons were handicapped by a heavy rain, and although they threatened many times in the last half, they could not seem to score.

Conference championship hopes were ruined as the result of the game with Iowa State Teachers, who defeated us 13-0. The Teachers scored on two long runs in the first half and then settled down to protect their two-touchdown lead. Although Morningside outplayed their opponents during the second half, they could not cross the goal line. However, the entire Morningside team looked good even in defeat.

Before a large Homecoming crowd, South Dakota University, traditional rivals, defeated the Maroons 26-12. The Coyotes' powerful "T" formation proved to be too much for the home team. Morningside's two scores were the result of fumbles on the part of South Dakota, the first coming when the University fumbled in the end zone. Morningside scored again in the third quarter when Elmendo Rossi picked up a fumble on the three yard line and went over standing up. From this point on, South Dakota had everything their own way, scoring twice more before the game ended.

Morningside could not seem to get back in stride again and the following week the Maroons again bowed in defeat to Omaha University, 7-6. Omaha scored early in the ball game, but Morningside came back in the second half to score on a pass from Buckmiller to McCoy. The failure to make the extra point lost the game for the Maroons.

However, Morningside went to town in the next game and overwhelmingly defeated a noticeably weaker Detroit Tech team by the score of 50-7. Dirr and Logue each scored twice, while Obye, Feikema, Kerzie, and Robar each crossed the goal line once. Every player on the Morningside squad saw plenty of action by the time the game was over.

South Dakota State managed to edge out a 3-0 win over the Maroons. The game was very even with neither team threatening too much. A cold day and a snow-covered field handicapped both teams. This was the last game of the season for both schools and left them tied for last place in the conference.



Kennedy
Kerzie
Lease
Reese



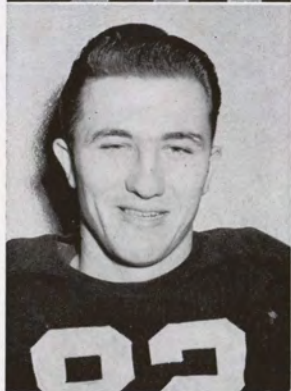
BERNARD FEIKEMA

Bernie, an end and team captain for this year, won three letters. He liked it best when the going was rough. As a result of his performances, he was named on the 1941 All-Conference team.



EARL GOODENOW

Earl earned his first letter this year at the tackle position. He was one of the hardest workers on the squad and was always in there with spirit and enthusiasm.



ALBERT HAENFLER

"Hap" played blocking back for his first two years on the varsity squad, but was slowed down this year because of a knee injury. However, he saw enough action to earn his third letter.



WALLY HANSON

Wally earned his first letter as a senior, but was a veteran, having just missed getting the award in two previous seasons. He played tackle.

GENE KENNEDY

Gene is a senior who earned a letter when he was a sophomore. He played every position in the backfield and was one of the best passers on the squad.

STEVE KERZIE

Steve was the fastest man on the squad and played left halfback. He really hit his stride when

Rossi
Thompson
Widler
Logue

playing against his former high school coach at North Dakota State. A senior, he earned his second letter this year.

JOE LEASE

Joe is a senior who failed to earn his letter this year, although he won one as a junior. He was shifted from his fullback spot to a guard position and saw plenty of action there.

ROBERT REESE

A senior who earned his first letter as a guard, Bob was a consistent player and a hard worker.

ELMENDO ROSSI

A senior halfback who earned his second letter, he was one of the smallest men on the squad and probably had more fight than anyone else.

GLEN THOMPSON

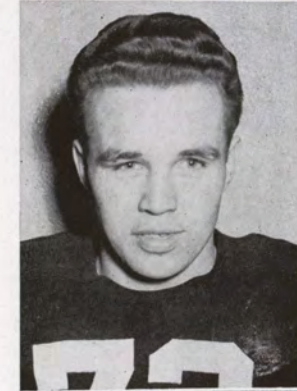
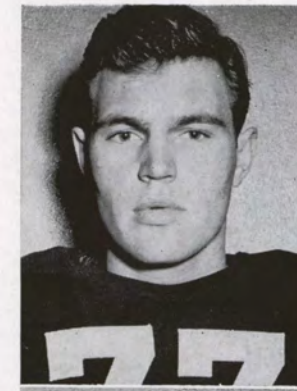
Glen is a senior guard who lettered for the first time this year. He played regularly all season and held down his position very capably.

DON WIDLER

A senior who earned three letters at tackle, Don was headed for an all-conference berth before he injured his knee midway in the season.

CHARLES LOGUE

When "Turp" hits the line, something has to give. He earned his second letter.



Ott
Steck
Buckmiller
Dirr



ORLAN OTT

A junior who earned his second letter, Orlan was shifted from center to tackle.



JIM STECK

One of the best defensive men on the squad, Jim earned his second letter as center.



LOWELL BUCKMILLER

A sophomore halfback, "Buck" should see plenty of action next year.



CHARLES DIRR

Chuck, right halfback, was one of the few sophomores to make the all-conference team.

ORIN GOODRICH

Orin is a sophomore who played blocking back and did a fine job.

CHARLES OBYE

Chuck is a fullback and a great all-around athlete from whom we expect plenty.

EUGENE STOVER

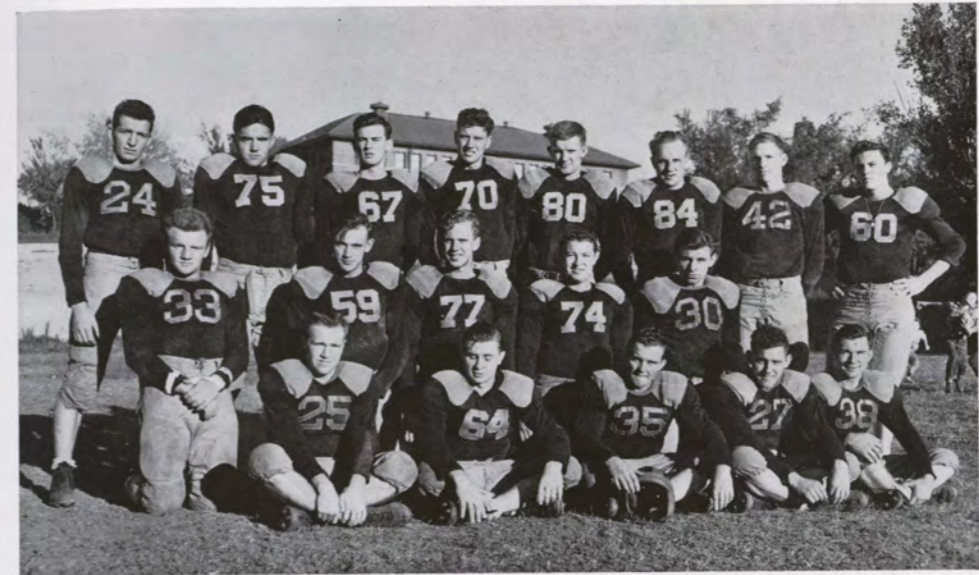
A sophomore tackle shifted to center, "Bunny" didn't see too much action, but should be in there next year.

JAMES STRAIT

Another sophomore guard, Jim should be in there as a regular next year.

Goodrich
Obye
Stover
Strait

Freshman Football



Back Row: Kaufman, Muckey, Obrecht, Waterman, Johnson, Moet, Bornholdt, O'Conner.
Middle Row: Lohff, Asprey, Swalley, Witt, Sokolovske.
Front Row: Henry, Rogers, Jensen, Loewenberg, Walensky.

Last fall twenty-five football aspirants reported to Coach Honie Rogers for practice. Some had experience in high school, while others were out for the first time.

The first game was with the Creighton Freshmen, and it was played here in Sioux City with Morningside on the winning end of a 21 to 12 score. A heavy rain slowed the game down but the outstanding men for the home team were "Chubs" Lohff and Gene Aspary.

Heavy rain and a muddy field did not stop the determined Morningside freshmen from defeating the Omaha freshmen on Bass Field to the tune of 26-0.

The third and last game provided the only loss of the season when South Dakota University freshmen defeated our men 26-0. Morningside could not seem to penetrate the strong South Dakota line.

The 1941 season for the Maroon frosh could be considered very successful and many valuable players from the squad should greatly aid the varsity next year.

Varsity Basketball



R. GLEN "HONIE" ROGERS
Head Basketball Coach



Back Row: Held, Jones, Stevens, Schellenger, Hanson, VanderBerg, Adcock.
Front Row: De Maine, Clark, Snyder, Jones, Kerzie, Pepper, Obye.

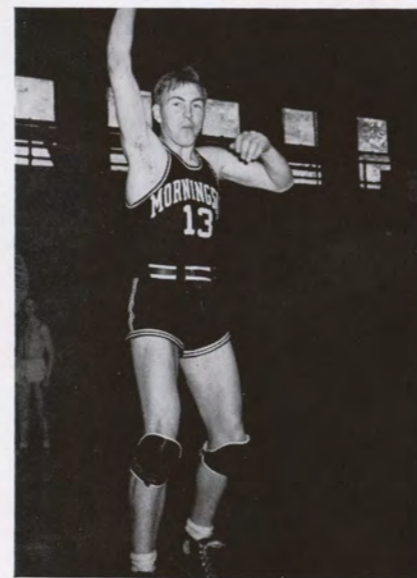
Varsity Basketball



Adcock

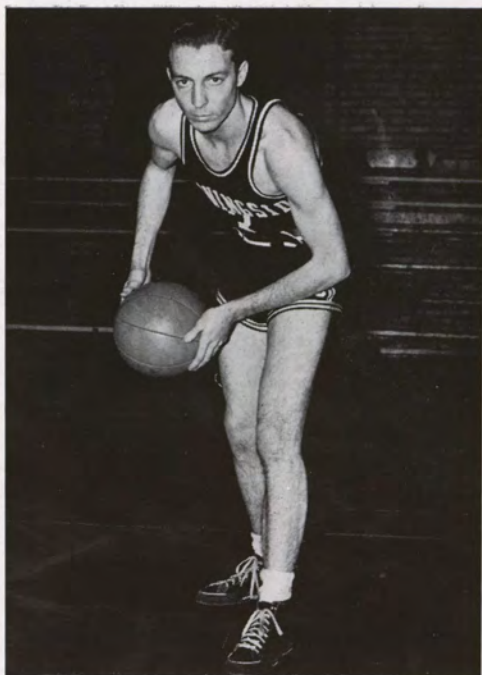
SEASON'S RECORD

Morningside.....	43	Yankton	31
Morningside.....	35	Carleton	30
Morningside.....	50	Hastings	29
Morningside.....	35	Illinois State Normal	41
Morningside.....	36	Northern Illinois.....	28
Morningside.....	34	Iowa State Teachers..	22
Morningside.....	29	Phillips "66".....	49
Morningside.....	45	North Dakota State...	39
Morningside.....	30	South Dakota U.....	29
Morningside.....	45	Omaha	31
Morningside.....	52	North Dakota U.....	55
Morningside.....	34	Omaha	41
Morningside.....	36	South Dakota State...	41
Morningside.....	47	Augustana	38
Morningside.....	42	Iowa State Teachers..	35
Morningside.....	33	South Dakota U.....	30
	627		569

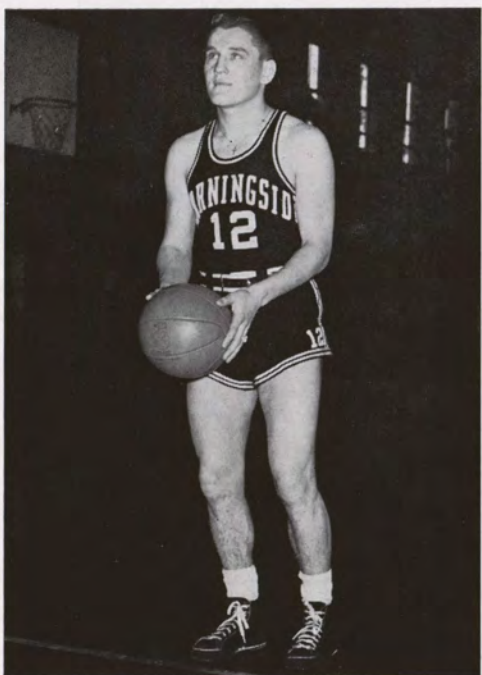


Hanson

The 1941-42 basketball season began with a great deal of enthusiasm as the Maroons rolled through their first four



Jones



Kerzie

conference games with what appeared to be a great deal of ease. They reached their peak when they downed the North Dakota State Bisons, who were a heavy favorite to cop the conference championship.

However, Morningside hit a mid-season slump in February and lost three conference games in a row which kept them from sharing the title with North Dakota State.

One of the highlights of the season was the game with the Phillips "66" team which consists of All-American players from different universities in the country. The Maroons could not hold out against their much larger opponents, but provided a good game for the capacity crowd.

Perhaps the most thrilling games were the two with our traditional rivals, South Dakota University. The first was played at Vermillion and many Morningside students attended and added much spirit and enthusiasm. After a closely matched battle, the Maroons emerged the victor by one



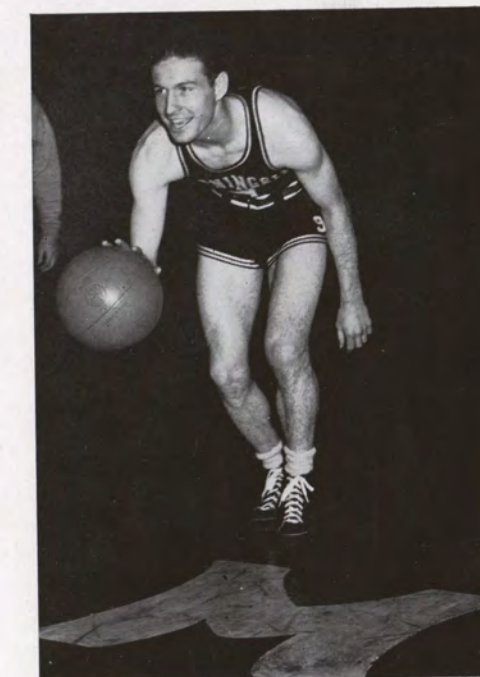
point. The second game with the Coyotes was played in Alumni Gymnasium. Both teams battled valiantly and just before the final whistle, Francis Jones, Maroon guard, sank a long shot to tie the game. This resulted in two breath-taking overtime periods with Morningside the final winner to the tune of 33-30.

Two men from the 1941-42 team were chosen on the North Central All-Conference team. These were Jones, a senior guard, and Held, a sophomore forward. Held was the individual high scorer for the season with Jones second. A few points behind Jones for high scoring honors was Glenn Adcock, the other senior on the team.

The Maroons won six and lost three in conference play which was good enough to gain undisputed second place. The boys handed North Dakota State their only loss in the conference. Next year the Maroons should be more powerful. Of the fourteen

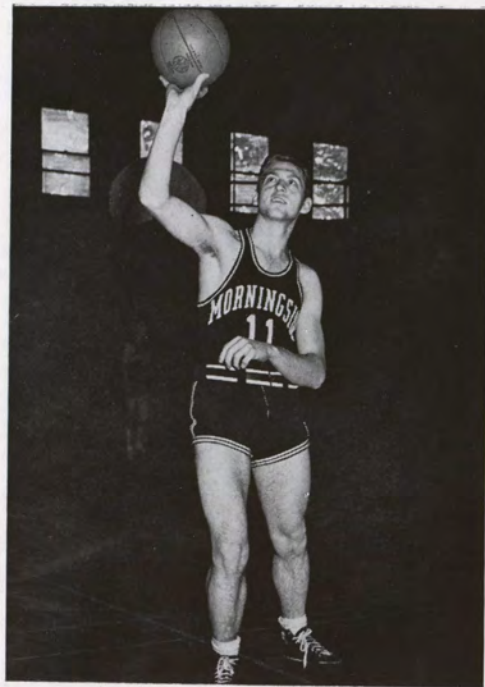


Clark



DeMaine





Held

man squad which finished the season, eight of the boys played their first varsity ball as sophomores and should all be in there next year to make it tough for any team in the conference.

GLENN ADCOCK

Glenn is a fine guard who was very good on long shots.

WALLY HANSON

Wally was a center and probably the best rebound man on the squad.

FRANCIS JONES

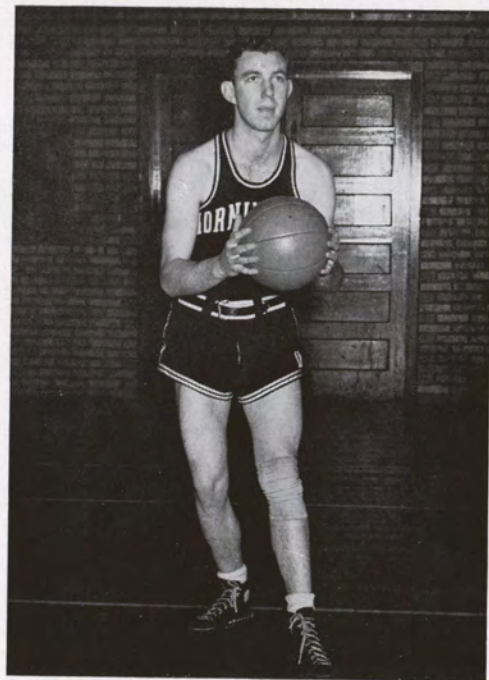
A very good defensive man with an excellent eye for the basket, Francis was named on the All-Conference team.

STEVE KERZIE

Steve was the fastest man on the squad and was really in there with plenty of fight.

JOE DEMAINE

Although one of the smallest players on



Mathers

the team, Joe was a very good passer and ably filled the position of forward.

LOREN CLARK

A sophomore forward who earned his first letter, "Tut" is a good passer and a deadly shot. We'll expect a lot from him in the future.

ROBERT HELD

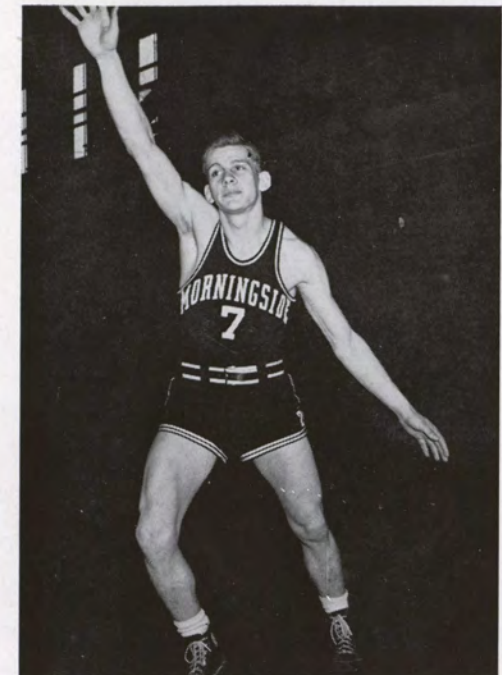
Bob is a forward who starred in his first year of varsity competition. He was named on the All-Conference team.

NORMAN MATHERS

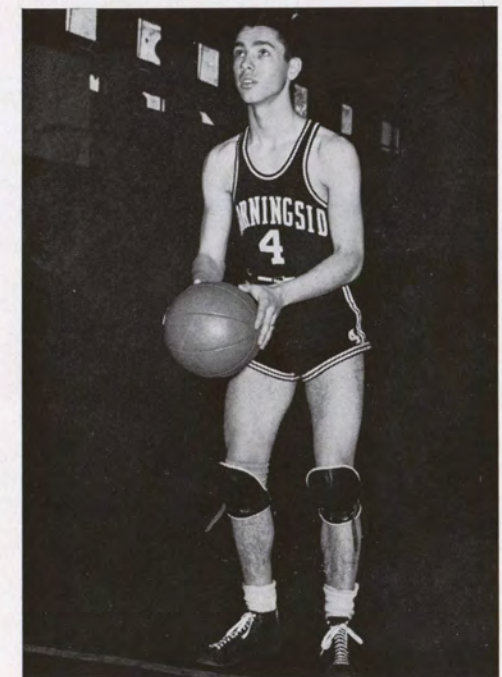
Norm is a sophomore forward who failed to earn a letter although he saw a great deal of action. He is a good rebound man.

CHARLES OBYE

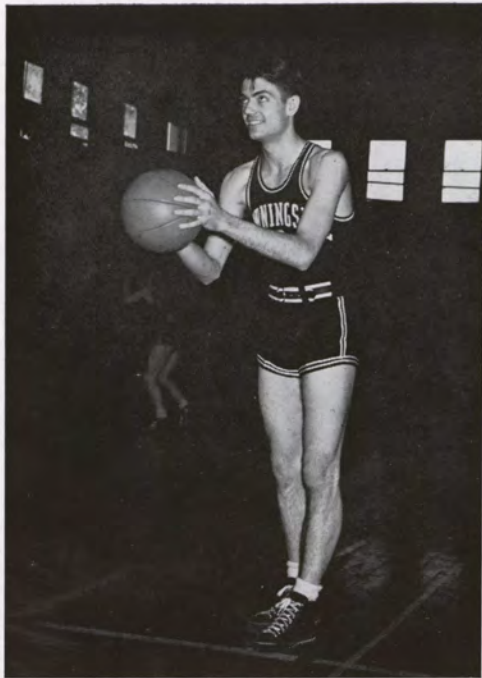
Another sophomore who received a letter at guard, Chuck is a shifty dribbler and a good defensive man.



Obye



Pepper



Stevens

BILL PEPPER

Bill is a sophomore who, although he failed to earn a letter, should be in there at guard next year.

GALE STEVENS

This was Gale's first year as a regular center with the varsity, and he should show up even better next season.



PHILLIPS "66" GAME

—Courtesy Sioux City Journal-Tribune

Freshman Basketball



Back Row: Rhoades, Helm, Obrecht, Bornholtz, Rossi.
Front Row: McBride, McKellips, Held, Robinson.

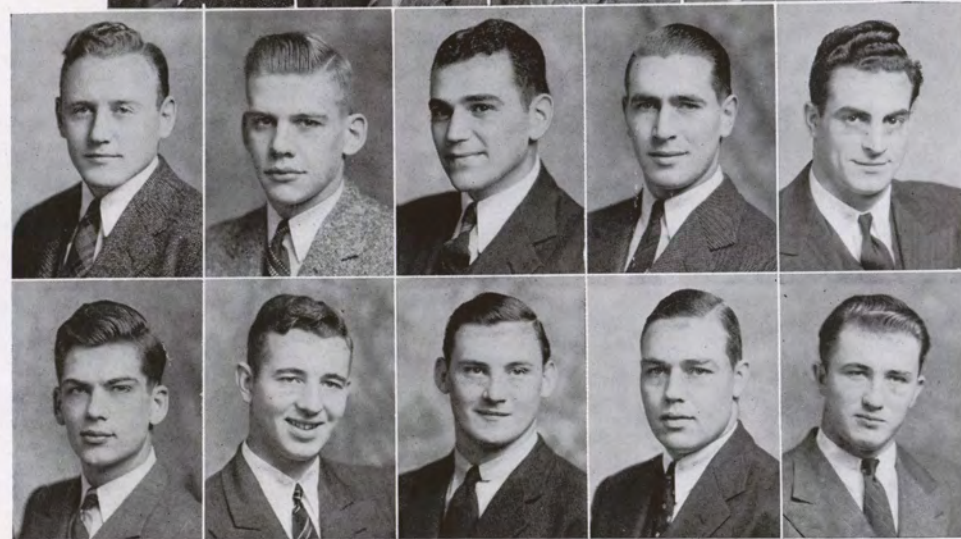
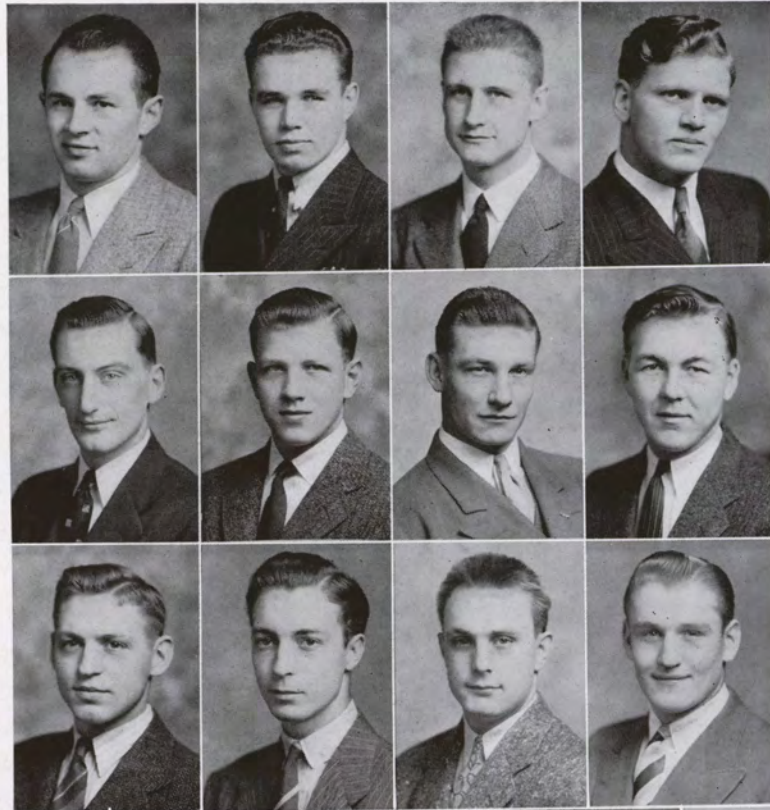
SEASON'S RECORD

Morningside Frosh.....23	Old Home Bread.....41
Morningside Frosh.....34	Olson's Sports13
Morningside Frosh.....33	Dusty's Comets24
Morningside Frosh.....24	Old Home Bread.....20
Morningside Frosh.....29	White Shirts21
Morningside Frosh.....38	South Dakota U.....37
Morningside Frosh.....29	Old Home Bread.....27
Morningside Frosh.....32	South Dakota U.....41
Morningside Frosh.....30	Bronson Independents28
Morningside Frosh.....31	Intramural All-Stars26

The Maroon Frosh had a very successful season, although they had three different coaches during the course of the year. Bernie Scherer was coach until the army called him, when Jack Loff took over. However, Jack graduated at the end of the first semester, so Elmendo Rossi was called upon to coach for the remainder of the season.

John Helm, 6'4" center from Hinton, was probably the star of the team, but he was ably assisted by "Dusty" Rhoades, Charles Obrecht, Lawrence Freeman, and Frank Robinson who should all prove very valuable to the varsity next year.

M Club



Top Row: Adcock, Buckmiller, Dirr, Feikema.
 Second Row: Goodenow, Goodrich, Haenfler, Hanson.
 Third Row: Held, Jones, Kennedy, Kerzie.
 Fourth Row: Lease, Obye, Reese, Robar, Rossi.
 Bottom Row: Spiry, Steck, Strait, Thompson, Widler.

M Club



Reese, Widler, Kerzie, Steck

The "M" Club is an honorary body of all men who win letters in major sports. The requirements for lettermen are very strict and it is considered quite a distinction to become a member of this body.

The "M" Club room in the gymnasium was completed this year. The finances for this room were donated by alumni who were members of the "M" Club in past years.

This club meets on the first and third Thursdays of every month. The officers of the club for the past year were:

Steve Kerzie	President
Don Widler	Vice-President
Jim Steck	Secretary
Robert Reese	Treasurer



Top Row: Stevens, Hanson, Goodenow, Ott, Jones.
 Second Row: Rogers, DeMaine, Thompson, Kerzie, Held, Reese, Obye.
 Third Row: Goodrich, Steck, Logue, Feikema, Widler.
 Bottom Row: Rossi, Clark, Kennedy, Dirr, Buckmiller.





Kerzie

Track

Steve Kerzie and Dale Robar were the only letter winners last year, and Kerzie was the only one back this year. He won the conference broad jump and a place in the 100 yard dash.

The Maroons had more out for track this year than in recent years, because freshmen were eligible to compete in varsity meets.

Some of the other outstanding men were Joe Ringland, Gene Aspary, "Chubs" Lohff, Lowell Buckmiller, and Chuck Obye.

Intramural



Hanson, Steck



Wicker, Benton, Chambers, Hunter, Sawin, Swalley, Bonath

The basketball championship was won by the Cardinals, composed of Alvern Sawin, Clair Hunter, Jay Wicker, Francis Chambers, and Arthur Bonath. The other teams which competed were the Tau Delts, Phi Sigs, and the Comets.

Since Morningside began intercollegiate golf two years ago, they have not been beaten in a dual meet. This year they should be strong contenders for conference championship. Hanson and Steck are veterans of last year's team. This year they have seven meets.

The volleyball league began right after basketball. The competing teams were the Phi Sigs, Tau Delts, Faculty, East, and Central. The Tau Delts finally won after tying with the Phi Sigs.

Women's Athletics



MISS LOIS ANNE SIMONS
Instructor in Physical Education

W. A. A. Board



Back Row: Faul, Helm, Roadman.
Seated: Collier, Kingsbury, Brown.



Brown, Cairy, Christiansen, Hofer, Roadman, Faul

The Women's Athletic Association is an organization including girls who have completed one season of ten hours in any of the following sports: bowling, badminton, basketball, ping pong, tennis, archery, volley ball, and soft ball.

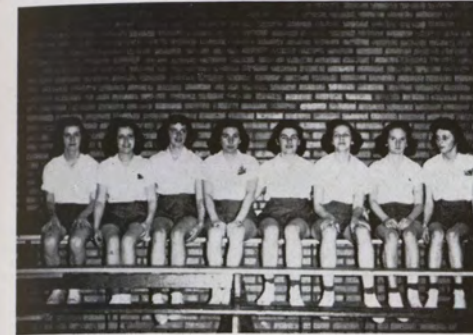
Miss Simons is the club's director. Activities which the W. A. A. sponsored during the year are tourneys in ping pong, basketball and badminton, Play Day, overnight hikes and picnics, and the Yale-Harvard basketball game.

Officers of the year were:

Ruth KingsburyPresident
 Kathryn BrownVice-President
 Ruth WalkerSecretary
 Janice CollierTreasurer
 Ruth WalkerBasketball
 Lois Helm.....Ping Pong and Badminton
 Hope FaulArchery

Intramural basketball teams were captained by Donna Hofer, Kappa Pi Alpha; Vernice Christiansen, Dorm girls; Hope Faul, Town girls; Joyce Roadman, Kappa Zeta Chi; Kathryn Brown, Seniors; and Betty Cairy, Freshmen.

Yale



Harvard



The Yale-Harvard teams were composed of the following girls:

YALE

Kathryn Brown
 Harriett Pratt
 Vernice Christiansen
 Hope Faul
 Edna Cavett
 Janice Collier
 Lois Held
 Dorothy Brown

HARVARD

Ruth Kingsbury
 Lois Helm
 Lillian McGraw
 Betty Cairy
 Ruth Walker
 Elinor Jacobson
 Joyce Roadman
 Ruth White

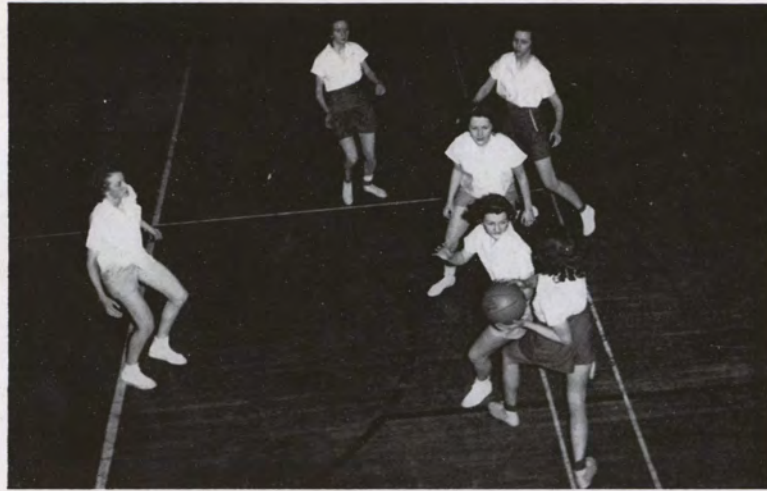
The team captains were Kathryn Brown and Ruth Kingsbury. The Yale team defeated the Harvard girls to the tune of 19-11. Hope Faul and Lois Helm tied for scoring honors.

Seniors of various high schools were invited to the college for a day's activities of play. This event is called Play Day and is annually responsible for many of the new freshman students.

The overnight hikes were held at Stone Park. Picnic suppers and breakfasts were included.



ACTIVITIES



HARVARD TRIES A PASS...

Cheer Leaders



Roadman, White, Chapman



Stone, Faul, deVries

The Maroon cheering section was led this year by six snappy cheer leaders. Steve deVries captained the group which was composed of Joyce Roadman, Ruth White, Arlene Chapman, Don Stone, and Duane Faul. Under their sponsorship, a Pep Club was formed on the campus, which did much to further college spirit and enthusiasm.



Music

Dramatics

Forensics



Paul MacCollin



Professor Paul MacCollin, popularly known as "Mr. Mac," is the Director of the Conservatory, which, due to his persistent efforts, is known as one of the better music schools of the country. He is also director of the nationally known Morningside College A Cappella Choir. His work in this respect has been widely acclaimed because of the wonder in his ability to train a group of singers in so accurate and precise a musical manner.

Morningside College A Cappella Choir



Back Row: Jones, Patterson, Alston, Bruhn, Snyder, Fairchild, Peterson, Bush, Weaver, Caine, Ladwig, Reynolds, Easlev, Kuhlmann, Kitterman, deVries,
 Second Row: Teachout, DuBois, Beckwith, Wicker, Tyedte, Allen, Dunn, Lease, Bolton, Holcomb, Horseman, Kolp, Ruby, Burris, Chamberlain, Godtfriing,
 Third Row: Snyder, Bootjer, Deirup, Labbitt, Walker, Cox, Sanders, Shoemaker, Rohweder, Swisher, Coss, Hall,
 Front Row: Woodford, Strobel, Adams, MacCollin, Fairchild, Werden, Boyd, Jones, Keith, Stoakes, Wicklund, Hahn.

Oh, for the Life of a Chorister

By the dawn's early light, two buses could be distinguished in front of the Con, soon to be departing for Kansas City and all points south. Everyone seemed eager and happy for the trip to begin. Little did they know.

Perhaps the less said about the first few concerts the better, especially when they bring back memories of the second day's three concerts before breakfast.

Other memories that may not be too pleasant are the hours and hours when Simon Legree MacCollin had us at the end of his black-snake for rehearsal. Those who fell by the wayside from utter fatigue felt an extra lash.

By the time we got to Henryetta some of the members began to notice all the modern plumbing which some of the hosts and hostesses didn't have. Then there were homes like the one where a couple of the girls stayed in which lived about six families and no one seemed to know who belonged to whom.

Then Alexandria, Oh Alexandria! Somehow we fellows didn't see much of the girls during our stay. You know there's something about a soldier and all that sort of rot. We just got close together by ourselves for consolation. Could we help being close together with twenty-four fellows in one hotel room! Lovely hotel, wasn't it, girls, or didn't you notice?

Don Allen was the chief amazement (I mean amusement) on the bus between stops. His tales of the Ubangi Tribe and of slashing his way through a wall of human flesh really were full of awe (or do we mean awful?).

By the way, some meat packing company must have gone into mass production and made a fortune from all the sandwiches which we consumed as part, the larger part, of our daily sack lunches.

And how about those air conditioned army cots we slept on in Rolla, Missouri? Yes, how about that, Kuhlmann? There was a lot of hot air floating around but it wasn't coming up through the bottom of the cots.

Everyone arrived home tired but slaphappy. However, after a few weeks of recuperation, I think we nearly all returned to normalcy or a reasonable facsimile thereof.

Band



The Morningside College Band is one of the most popular organizations on the campus. It plays for all football, basketball games, and pep rallies. This year the band took its eighth annual tour, giving concerts throughout this section of the state and climaxed this activity with a home concert.

Drum Majorettes



Hinrichs, Prager, Jones

Leading the band in all parades and field maneuvers were Roy Holland, drum major, and the above high stepping drum majorettes, Irene Hinrichs, Geraldine Prager, and Jean Jones.

Concert Course



Kucinski
Bampton



Heifetz
Trapp Family

The Sioux City Civic Concert Course presented music lovers of the territory with six brilliant concerts this season. Jascha Heifetz, violinist, headlined the course. Rose Bampton, Metropolitan soprano, and the Trapp Family ensemble also presented individual recitals.

Appearing with the Sioux City Symphony Orchestra, under the baton of Leo Kucinski, were Jean Watson, contralto; Robert Goldsand, pianist; and Sigurd Rascher, saxophonist.

Sioux City Symphony Orchestra



The Sioux City Symphony Orchestra is under the direction of Leo Kucinski, head of the violin department of the Conservatory. The orchestra is composed of many of our talented students as well as a large number of professional musicians. This outstanding group is well known throughout the middle west for the unusual quality of its performances.

Faculty String Quartet



Kucinski, Mossman, Clayton, Stickels

The Faculty String Quartet is composed of Leo Kucinski, violin; Benita Mossman, violin; Marian Stickels, viola; and Richard Clayton, cello. Under the able direction of Mr. Kucinski, the quartet has given outstanding performances in Sioux City and the surrounding territory.

Student String Quartet



Garretson, Demetroulis, Feick, Bush

This string ensemble is in constant demand by various organizations for their program of chamber music, including a season engagement with the Knife and Fork Club. The quartet is composed of Homer Garretson, violin; Jim Demetroulis, violin; Ronald Bush, viola; and Robert Feick, cello.

Madrigal Singers



Ruby, Holcomb, Alston, Fairchild, Werden, Shoemaker, Lease, Bush

The Madrigal Singers were organized in December and were active during the holiday season. The group has provided music for chapel programs and various Sioux City organizations. Included in the membership are: Mrs. MacCollin, Beverly Werden, Mrs. Canning, Helen Dorothy Shoemaker, Kenneth Ruby, George Holcomb, Ronald Bush, and Gus Lease.

Mu Phi Epsilon



Top Row: Berg, DeVries, Foster, Jacobs, Jones.
Bottom Row: King, Luchsinger, Santee, Timm, Woodford.

OFFICERS

President	Lauretta King
Vice-President	Maxine Foster
Recording Secretary.....	Margaret Berg
Corresponding Secretary.....	Dorothy Jones
Alumnae Secretary.....	Dorothy Luchsinger
Treasurer.....	Esther Mary Santee
Historian	Jeanne Timm
Warden	Alice Jacobs
Chaplain	Margaret Thomas
Chorister.....	Dorothy Ann DeVries
Adviser	Faith Woodford

On November 9, 1939, Phi Zeta Chapter of Mu Phi Epsilon, the national music honor sorority in Morningside College, was organized. This society is composed of junior and senior girls and faculty women of the Conservatory who are superior in scholarship and musicianship. Esther Mary Santee will be the business delegate at the National Convention to be held in Denver, Colorado, this summer.

Phi Mu Alpha Sinfonia of America

GAMMA XI CHAPTER



Back Row: Werder, Kucinski, Wicker, Demetroulis, Timm, Lowry, Ruby, Dunn, Orner, Feick.
Seated: MacCollin, Mathwig, Canning, Peterson, Bush, Garretson, Reistrup.

OFFICERS

President	Harry Werder
Vice-President	Homer Garretson
Secretary-Treasurer	Wallace Peterson
Historian	Dale Dunn
Warden	Leroy Mathwig
Supreme Councilman.....	Ronald Bush
Faculty Adviser.....	James Reistrup

This national social-professional fraternity was organized for the purpose of furthering the cause of and interest in American Music. In accordance with this aim, each of the seventy-three chapters presents an annual concert of music by American composers exclusively.

Although Gamma Xi chapter was organized only last year, it promises to be one of the most active chapters. It is called upon frequently to assist in the handling of musical programs and contests. The annual convention this year was held in Ames, Iowa, where a concert by the Minneapolis Symphony was given as a part of the convention program.

Honorary members include such eminent musicians as Rudolph Ganz, Jascha Heifetz, Leopold Stokowski, Albert Spalding, Nelson Eddy, and Richard Crooks.

Nearly all members in the local chapter have presented recitals in their major field this year. These included both instrumental and vocal recitals.

John G. Felton



John G. Felton has completed another successful year at Morningside College as head of the Department of Speech and Dramatics. He has produced three outstanding plays this year, giving Morningside students an excellent variety of dramatic production.

Mr. Felton received his Masters Degree at Iowa University and was on the summer school faculty there in 1940 and 1941. He is especially creative in the technical aspects of the stage. Mrs. Felton, who is also a dramatics major, assists him.

Collegiate Players



Back Row: Gusteson, Kennedy, Tracy, Caine, Anderson, Schellenger, Felton, Reese.
Front Row: Arthur, Brown, Weaver, Baker, Logan, Weatherby, Elsinga, Labbitt, Hoefler.

The Morningside Collegiate Players is a local campus organization consisting of a group of students who have expressed their interest in dramatics through actual participation in dramatic production, either in acting or technical work. The organization is open to all students who are interested in developing their dramatic talents or in learning the technical aspects of the stage.

Alpha Psi Omega



Brown, Caine, Gusteson, Hoefler, Kennedy

Six new members were elected to membership in Alpha Psi Omega this year for outstanding service in dramatics. They are Robert Caine, Mary Cruikshank, Gene Kennedy, Betty Hoefler, Raymond Gusteson, and Kathryn Brown.

Alpha Psi Omega is a national honorary dramatics fraternity, and to be eligible for membership, a student must show that he has been outstanding in participation in acting and technical work.

Commencement Play

At the time of going to press, the tryouts were beginning for the commencement play, an old fashioned melodrama, "Pure as the Driven Snow, or a Working Girl's Secret," by Paul Loomis. This play, complete with the fair haired heroine, the long mustached villain, and the pure hero, was presented on May 22.



Swisher



Tracy, Buchner, Labbitt



Kennedy



Hoefler, Kingsbury, Weaver

Margin for Error

CAST

Otto B. Horst.....	Gene Kennedy
Baron Max von Alvenstor.....	Steve deVries
Officer Moe Finklestein.....	Charles Durr
Frieda	Sally Arthur
Dr. Jennings.....	John Kolp
Sophie Baumer.....	Kathryn Brown
Karl Baumer.....	Raymond Gusteson
Thomas S. Denny.....	Roy Schellenger
Captain Mulrooney.....	Walter Yeager
Radio Announcer.....	Donald Stone

The play "Margin for Error," by Clare Booth, opened the 1941-1942 season of dramatic productions at Morningside College. This play deals with the problems of the Nazi fifth column work in the United States by the members of a German Consulate and the German American Bund. This is one of the most successful of the recent propaganda plays on the New York stage, and was very successful as put on by the Morningside Collegiate Players. It was presented to the general public on December 1 and 2.



Craig's Wife

CAST

Miss Austin	Joan Elsinga
Mrs. Harold.....	Inez Harris
Mazie	Mary Wood
Mrs. Craig.....	Margaret Labbitt
Ethel Landreth.....	Roberta Haitz
Walter Craig.....	Robert Tracy
Mrs. Frazier.....	Phyllis Baker
Billy Birkmire.....	Stanley Anderson
Joseph Catelle.....	Miles Tommeraasen
Harry	Edward Meents
Eugene Fredericks.....	Steve deVries

The second play of the season was "Craig's Wife," by George Kelly. This play is a more serious play about a woman who has married for the security of a home, and not for love. She excludes all visitors and friends from the house and finally drives her husband away. Her situation is accurately stated by one of the characters in the play who says, "People who live to themselves are generally left to themselves." This play was presented the evenings of April 10 and 11.



Mendal B. Miller



The faculty adviser of Pi Kappa Delta and the official inter-collegiate debate coach is Professor Mendal B. Miller. He is the immediate past president of the local Pi Kappa Delta province as well as past president of the Iowa Forensic Association. Professor Miller enjoys an enviable reputation in speech circles throughout the nation and provides a source of inspiration for speech students at Morningside.



Hamel

Campus forensic activities at Morningside are under the leadership of the local chapter of Pi Kappa Delta of which Robert Hamel is president. Pi Kappa Delta is a national forensic fraternity of 170 chapters representing as many colleges in thirty-six states. Its purpose is to sponsor any activities related to the improvement of the art of public speaking. Membership is earned through participation in intercollegiate debate, extemporaneous speaking, oratory, and a national student legislative assembly.



Jacobson, Elsinga, Leget, Hamel

Two very timely subjects were used in debate this year. At a time when congressional halls were resounding with calls for federal legislation of labor unions to speed war production, collegiate debaters were clashing on the question, "Resolved, that the Federal Government Should Regulate all Labor Unions in the United States." As the high point of the first semester's debate program, Joan Elsinga, Betty Leget, Jack Howe, and Wesley Jacobson journeyed to a tri-state tournament at Iowa City.

The second semester subject was, "Resolved, that the Democracies Should Form a Federation to Establish and Maintain the Eight Churchill-Roosevelt Principles of World Peace."

Attendance at the State Tournament at Cedar Rapids, the Northwest Tournament at St. Paul, and the National Pi Kappa Delta Tournament at Minneapolis comprised the competitive activities of the second semester.

FEATURES

Unusual distinction attended Morningside's participation in the state and national tournaments. The usual practice of selecting a winner was abandoned in favor of the selection of the high ranking teams. In both the state and national tournaments, Robert Hamel and Wesley Jacobson received the highest award granted—the superior rating. Morningside, California Institute of Technology, William Jewell and Baylor University were selected as the best ranking teams of the men's division of the national tournament. A beautiful trophy was awarded in recognition of this outstanding distinction. Robert Hamel also received the highest individual award granted by the state forensic association.

A most worthwhile aspect of our debate program this year was debating before various civic forum and service clubs in Sioux City and elsewhere. This form of community service was much appreciated by the listeners and was very beneficial to the debaters.

The following students composed the debate squad: Betty Leget, Joan Elsinga, Jack Howe, Wesley Jacobson, Ed Meents, and Robert Hamel.



Miss Morningside



Brown, Kingsbury, Johnson

Miss Ruth Kingsbury climaxed her eventful college career when she reigned as Miss Morningside of 1941, the highest possible honor which can come to a Morningside coed. Attending Miss Kingsbury were Miss Helen Johnson and Miss Kathryn Brown. These three girls, chosen by popular student vote, presided over all Homecoming festivities, including the coronation ceremony, parade, football game and dance.



Glenn Miller



By an overwhelming popular student vote, Glenn Miller was chosen as judge of the 1942 beauty contest. Ten campus organizations sponsored candidates from which Mr. Miller selected the three Queens of the 1942 Sioux.

"The ten pictures you submitted to me were all so very lovely that it was too much of a job for one man to choose the three most beautiful. Therefore, I was forced to call in the boys in the band to have them help make my selections."—Glenn Miller.

Other candidates were: Marjorie Swisher, Mariellen Rifembark, Miriam Cox, Barbara Barry, Gwendolyn Downey, Helen Anderson, and Gloria Odegard.

Sioux Queen



MISS RUTH WHITE

Candidate of the Pre-Engineers Club

Sioux Queen



MISS LEONE SARGEANT
Candidate of Ishkoodah

Sioux Queen



MISS HELEN JOHNSON
Candidate of Phi Sigma Fraternity



Representative Seniors



MISS RUTH KINGSBURY

Ruth has received several of the most coveted honors Morningside College can offer. She was chosen May Queen in her freshman year, Sioux Queen in 1941, Miss Morningside of 1942, and received the presidencies of Agora and W. A. A. She served as secretary-treasurer of the student body during her senior year. Through her charm and friendliness, she has won the admiration of the entire student body.

Representative Seniors



MR. JOHN KOLP

John has been an able leader throughout his college career. He has held the presidencies of the sophomore class, Alpha Tau Delta, and the student body, and has been active in intra-mural and musical circles. His executive responsibilities have been carried with ease and confidence.

Representative Seniors



MISS HELEN JOHNSON

Helen's talent and personality have brought her recognition at Morningside. She has been a member of the chapel choir and a leader in several honorary societies. As president of Kappa Pi Alpha, editor of the Sioux, and Homecoming attendant she has demonstrated her ability and popularity.

Representative Seniors



MR. FRANCIS JONES

As an athlete of merit and a popular student leader, "Frannie" has held an enviable position at Morningside. He served as student body president and has been an active member of the "M" Club. His friendliness and good sportsmanship have won him a host of friends.

Representative Seniors



MISS LAUREE WOOD

In addition to superior scholastic achievement, Lauree has participated in a number of extra-curricular activities. She has been editor of the Collegian Reporter, president of Kappa Zeta Chi, and an active worker in future teacher organizations. Her contributions to campus life have been outstanding.

Representative Seniors



MR. RAYMOND GUSTESON

Ray has maintained a high scholastic record in addition to his leadership in school affairs. He has been president of Alpha Tau Delta, business manager of the Sioux, and active in the dramatic department. His capability and good humor have brought him much success in college life.



Homecoming



How to Travel Without Your Car—

• First, see your Union Pacific bus agent. Tell him where you want to go, and when. He'll answer any travel questions, plan your whole trip for you . . . at 1/2 the driving cost!



**CHICAGO & NORTHWESTERN STAGES
INTERSTATE TRANSIT LINES**

311 Sixth Street

Phone 5-7678

The Favorite Candy of the Northwest . . .

LaFAMA CHOCOLATES

ONE OF A FAMILY OF FAMOUS CHOCOLATES

Made by

JOHNSON BISCUIT COMPANY

Sioux City, Iowa



CALENDAR

SEPTEMBER

- 15-17 New Student Days. "You can take the boy off the farm, but you can't take the farm off the boy."
- 22 Dean Hill and we matriculate.
- 29 Faculty don soup and fish for formal reception. Brilliant array of apple polishers on hand.

OCTOBER

- 1 "Open Door" policy announced at dorm.
- 7 Frosh-Soph Day. Only the fittest survive.
- 18 Homecoming! Ruthie reigns as a gracious Miss Morningside.

NOVEMBER

- 15 Sadie Hawkins dance. Joyce Roadman chosen "Miss Repulsive"

- 17 Phi Sig pie eating contest. Many Pis on hand.
- 22 Dorm Formal. "All clear" signal given at 12 midnight.

DECEMBER

- 1-2 Morningsiders turn Nazi in "Margin for Error."
- 3 Psychology Night. Quackery and Dr. Emme on parade.
- 11 Pre-Engineers Night. Lethal gas perfected—to be tried at faculty meeting.

JANUARY

- 1-31 Very dull. Nothing happened.

FEBRUARY

- 13 Miss Mills seen chewing gum in sanctity of own room.
- 25 Pooley makes headlines as dorm gals submit to the "acid test."

KODAKS

Developing and Printing
HOME MOVIES

**EASTMAN
KODAK STORES, Inc.**

608 Pierce Street
Sioux City, Iowa



**WOODBURY COUNTY
SAVINGS BANK**

Our Learned Professors



SECURITY NATIONAL BANK of Sioux City

MEMBER F. D. I. C.



A Glass of Milk

FOR

Pep and
Good Health

MILK and ICE CREAM
DEALERS
of Sioux City

Frank's Cafe

Lady cooks have a style of cooking which appeals to our restaurant-going public. The food tastes like a home cooked meal and that means a lot.

GLASS FRONT

607 Pierce St. Sioux City

Flowers for All Occasions

Ferris Florist

Warrior Hotel

Phone 8-7554

Life at Its Lowest Ebb



PROFESSIONAL GUIDANCE

Whether your particular problem is concerned with savings, checking, loans or any other bank service, First National is prepared to offer you a solution.

FIRST NATIONAL BANK IN SIOUX CITY

Member Federal Deposit Insurance Corporation

DRINK

Coca-Cola

TRADE-MARK REG. U. S. PAT. OFF.

IN BOTTLES



Compliments of

THALLAS HOUSE OF FLOWERS AND GREENHOUSES

Sixth and Nebraska
Phones 8-3595 - 5-5541

"If it's flowers, we have them."

ANDERSON'S BAKERY

Morningside's High Class
Pastry Shop

At Peters Park
Phone 6-5966

HOLLYWOOD'S BEST

at the

Esquire Theatre

Sioux City's Finest Theatre.

Within walking distance
of the Campus

BEN FRANKLIN STORES

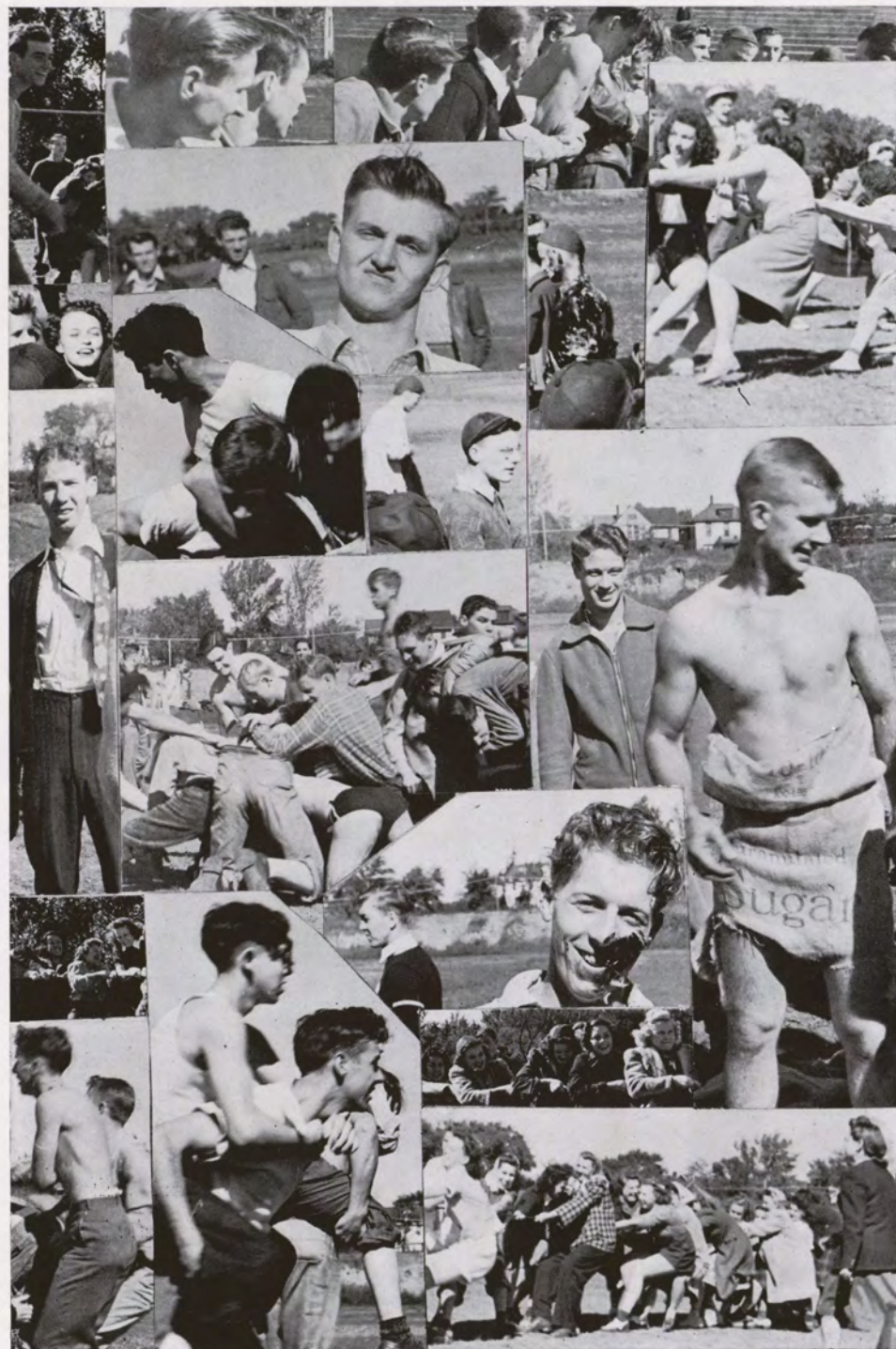
4006 Morningside Ave. Peters Park

"Your Dime Store at
Peters Park"

Everything from Five Cents to
One Dollar and up

T. L. SCHAEFER, Proprietor

Frosh-Soph Day



How to Keep Your Eyes Strong for the Battles Ahead . . .

War or no war, your eyes are the most precious possessions you ever will have. They take a lot of punishment but sooner or later they will weaken under the strain.

Keep them strong. Insist on good lighting. It prevents harmful eyestrain.

For reading, studying, and other close work use at least 100-watt bulbs. Anything less is dangerous. Run no risks with the only pair of eyes you ever will have. Remember, in Sioux City you can burn a 100-watt bulb two hours for the price of a stick of gum.

Sioux City Gas and Electric Co.

TAKE THE OFFENSIVE

BUY

War Savings Bonds and
Stamps

Start a systematic Savings Plan

The Toy National Bank

Sioux City, Iowa

STUDENT'S STORE

Make our drug store your
drug store

You will find lowest prices in town,
plus that personal touch with super
service added.

**BARNEY'S MORNINGSIDE
PHARMACY**

THE REXALL DRUG STORE

THE Council Oak Stores

Better Foods for Better Living

IOWA NEBRASKA SOUTH DAKOTA MINNESOTA



Casual Campus Closeups



PAUL H. WARNER
President and General Manager

ADAIR-WARNER PRINTING CO.

Printing with Service

516 Sixth Street

Phone 8-7831

Sioux City, Iowa

Van Schreeven & Company

Jewelers and
Optometrists

508 Fifth Street
Near Pierce Street

Sioux City

Iowa

J. C. RENNISON FLORAL CO.

516 Nebraska Street
Sioux City, Iowa

WIRE FLOWERS ANYWHERE
Bonded Member F. T. D.

"Say It with Flowers"

CALENDAR

(Continued)

MARCH

7 Zet formal. Five pounds and plenty of oomph.
14 Pi formal. Empire Room gets out of the red.

APRIL

4 Tau Delt formal. Polka dots and moonbeams.
30 "Clean-up Day." Did you pick your dandelion?

MAY

1 Power Jive! All out for victory. Plenty of
pomp and circumstance.
21-22 "Pure as the Driven Snow."

JUNE

2 Commencement. It was nice knowing you.

SKYLON

AND

SHORE ACRES

Where the Name Bands Play

EAT

with the College crowd

at

DUSTY'S
Redecorated
PARK LUNCH

PETERS PARK

GRAYSON'S SUITS ME

415 Fourth Street

Sioux City, Iowa



"L'Amour, Toujours L'Amour"



Youngberg

STUDIOS

THIS Annual and nearly all preceding annuals in the past thirty-eight years have been illustrated by photography produced by Martin Youngberg. We believe that this is proof of the popularity of this modern and highly equipped studio.

Youngberg Studio

615 Pierce Street
(Williges Furrier Building)



The Con on Tour



VERSTEGEN
PRINTING COMPANY

•
SIoux
CITY
IOWA

Builders of
Planned School Year Books
Since Nineteen Hundred
Eighteen

"Your Story in Picture Leaves Nothing Untold"



PLUMB CREEK ROAD

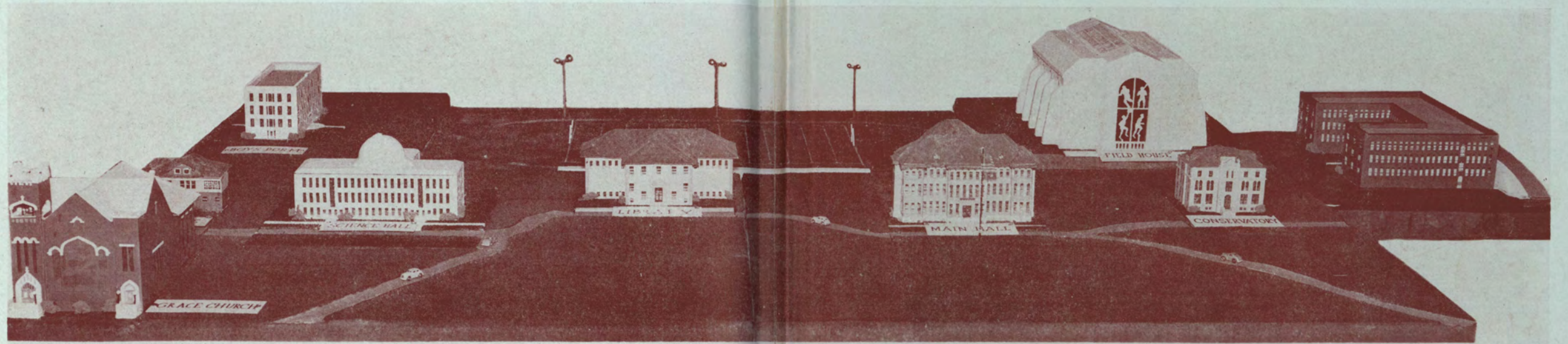
EDITH ROYKY

A SKILLED PHOTOGRAPHER knows how to set a camera to get a TRUE reproduction of the subject photographed. Photo-Engravers repeat this skill with scientific knowledge and craftsmanship to produce a TRUE reproduction of a pictorial subject on the printed page. The 1942 Sioux staff are justified in presenting this book with pride. Under the efficient supervision of Miss Helen Johnson and Mr. Ray Gusteson, together with the cooperation of a competent staff, this book is well qualified to take its place among the finest specimens of college year books.

The Journal-Tribune Publishing Company acknowledge their gratitude and the sincere pleasure that comes with the association and mutual confidence experienced in the production of this publication.

JOURNAL-TRIBUNE PUBLISHING CO. *PhotoEngraving*
DEPARTMENT
ARTISTS - DESIGNERS - MAKERS
OF FINE PRINTING PLATES





MORNINGSIDE OF TOMORROW

