

STYLX

1940

378.7774
M8285
1940

Morningside College
presents
The 1940 Sioux

CV. 46

Editor

IRENE JOHNSON

Business Manager

LESTER MENKE

Faculty Adviser

J. M. SAUNDERSON





378.7774
M828A
1940

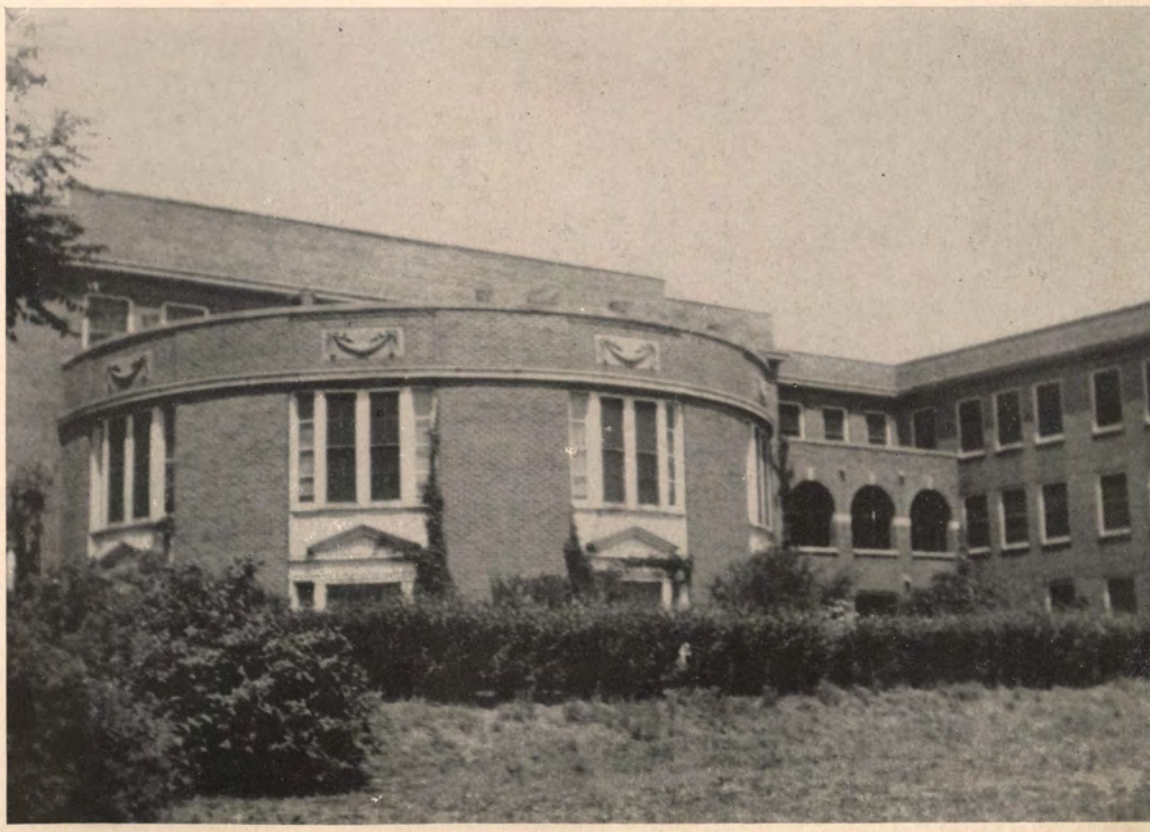
1940

SIOUX

1940

SIOUX

48900



1940

SIOUX

1940

SIOUX

Foreword

The 1940 Sioux is presented to the student body as a record of a memory-filled year. The year's progress and the spirit of Morningside College are reflected in these pages in the theme of the Sioux Indian. The staff hopes, by this book, to recall many school activities and pleasant memories.

Dedication

The 1940 Sioux is affectionately dedicated to
Miss Ethel Ruth Murray
in recognition of her friendly guidance of students
and faithful loyalty to Morningside College.



To

Miss Ethel Ruth Murray



In Memoriam

On June 6, 1939, there passed from our college community one who had made a name for himself as a master of languages, a minister of the Gospel, a tireless worker, a loyal friend and a true-lover of two countries, America, the land of his adoption, and his old Vaterland, Germany.

Professor Samuel C. Steinbrenner was born in Wuerttemberg, Germany, in 1877. He studied at both German and American Universities especially in the fields of language, philosophy and theology. As a minister of the Methodist Church he served a number of pastorates, first in the Northwest German Conference and later in the Northwest Iowa Conference. His career as a teacher was long and successful.

SAMUEL C. STEINBRENNER

He taught at Charles City College, Southern University of Alabama, Western Union, and at Morningside. As an instructor he was loved and honored for his sterling character.

There was heroism and Christian fortitude in the way in which he bore whatever life brought to him. Love of nature and of music, and quiet faith in God were outstanding traits of his personality. He will long be missed and his name held in honor at Morningside.

—L. C. F.

Our President

EARL ALAN ROADMAN

B.D., D.D., LL.D.
Iowa State Teachers College
Upper Iowa University
Boston University Graduate
School
University of Halle, Germany

The Staff

ASSISTANT EDITOR.....Betty Schunck
 LITERARY EDITOR.....Winifred Cheely
 LITERARY ASSISTANT.....Kathryn Madison
 SENIOR EDITOR.....Verona DeMond
 DRAMATICS EDITOR.....Minetta Miller
 FORENSICS EDITOR.....Ruth Olsen
 PHOTOGRAPHY EDITOR.....Patricia Warner
 PHOTOGRAPHER.....Robert Moore
 SNAPSHOT EDITOR.....Geraldine Thomas
 MUSIC EDITOR.....Genevieve Whittington
 WOMEN'S ATHLETICS.....Marjorie Nelson
 MEN'S ATHLETICS.....Ralph Brown
 ARTIST.....Kenneth Johnson
 TYPISTS.....Virginia Allen, Margaret Gusteson
 GENERAL ASSISTANT.....Helen Osbey
 PHOTOGRAPHY.....Youngberg Studios
 PRINTING.....Verstegen Printing Company
 ENGRAVING.....Bierman Engraving Company

—S. C. Journal.



Eight

The 1940 Sioux

The work of the Sioux Staff consists of compiling material for a yearbook. This is accomplished by dividing the work into departments with one person responsible for each, and the editor in charge of revision and supervision. The business manager handles the finances, and the adviser suggests and guides.

Menke
Madison
K. Johnson

Schunck
DeMond
Nelson

I. Johnson
Miller
Whittington

Osbey
Olsen
Gusteson

Cheely
Warner
Allen

Saunderson
Thomas
Brown



Nine

Health Office

For three years a college health office has been maintained for students at Morningside. The office is located on the second floor of the gym and is under the supervision of Dr. C. F. Berkstresser and Nurse Inez Grove.



Many privileges are offered through this office, among which are medical examinations of new students, small-pox vaccinations, Wasserman tests, and medical aid for any student in need of it.

The health office has been an invaluable asset to the college and many are benefited through this service.



INEZ GROVE
R. N.
College Nurse



DR. C. F. BERKSTRESSER
M. D.
College Physician

Board of Trustees

OFFICERS

R. J. HARRINGTON, Sioux City, Iowa.....President
C. L. BARKS, Orange City, Iowa.....Vice-President
T. N. McCLURE, Sioux City, Iowa.....Secretary-Treasurer

EMERITUS

J. G. Shumaker, Alamo, Texas

TRUSTEES OF HONOR

O. M. Bond, Sioux City, Iowa
C. C. Harshbarger, Onawa, Iowa
J. N. Hughes, Des Moines, Iowa
A. M. Jackson, Sioux City, Iowa
Mrs. C. F. Long, Sioux City, Iowa

TERMS EXPIRE 1940

C. W. Britton, Sioux City, Iowa
J. J. Davies, Fort Dodge, Iowa
G. W. Dunn, Sioux City, Iowa
L. W. Feik, Sioux City, Iowa
Clifford Harper, Sioux City, Iowa
Gordon Metcalf, Sioux City, Iowa
R. F. Roach, Sioux City, Iowa
A. L. Semans, Spencer, Iowa
J. R. Tumbleson, Eagle Grove, Iowa

TERMS EXPIRE 1941

C. L. Barks, Orange City, Iowa
F. E. Burgess, Algona, Iowa
J. C. Buthman, Algona, Iowa
H. I. Down, Sioux City, Iowa
J. A. Farnham, Cherokee, Iowa
J. V. Madison, Sioux City, Iowa
C. N. Smith, Sioux City, Iowa
D. W. Stewart, Sioux City, Iowa

TERMS EXPIRE 1942

Ray J. Harrington, Sioux City, Iowa
Leon Hickman, Pittsburg, Pennsylvania
C. H. Kingsbury, Ponca, Nebraska
John Kolp, Manson, Iowa
W. H. Lease, Akron, Iowa
F. W. Ortmeyer, Estherville, Iowa
C. S. VanEaton, Sioux City, Iowa
Miss Rae Wetmore, Sioux City, Iowa

Faculty Facsimiles



1
4
5
6
V
X

1
4
5
6
V
X



KJ

Faculty and Students



MYRON EARLE GRABER

Dean of Men and Professor of Physics

Degree—B. A. at Heidelberg University, 1901.
M. A. ibid, 1904.
Ph. D. at University of Iowa, 1924.
Graduate Student—University of Michigan, summer 1907.
Columbia University, 1908.
Ohio State University, 1913.
Fellow in Physics—University of Chicago, 1917-18.
University of Iowa, 1923-24.



LILLIAN ENGLISH DIMMITT

Dean of Women and Professor of Ancient Languages

Degree—B. A. at Illinois Wesleyan University, 1888.
M. A. at Columbia University, 1913.
L. H. D. at Illinois Wesleyan University, 1920.
Graduate Student—University of Chicago, summer quarters, 1894 and 1897.
Student in the American School of Classical Studies, Rome, 1903-4.
Graduate Student—Columbia University, 1912-13.
University of Chicago, summer 1918.

PAUL EMANUEL JOHNSON

Dean of the College and Professor of Philosophy and Religion

Degree—B. A. at Cornell College, 1920.
M. A. at University of Chicago, 1921.
S. T. B. at Boston University, 1923.
Graduate Fellow in Philosophy, Boston University, 1923-24.
Graduate Assistant in Philosophy, Brown University, 1924-25.
Graduate Studies, Harvard University, 1925, 1927-28.
Ph. D. at Boston University, 1928.



LAURA CLARA FISCHER
A.B., A.M.

Assistant Professor of German
Carleton College, University of Chicago,
University of Colorado, University of
Wisconsin.

IRA JAMES GWINN
A.B., M.S.

Assistant Professor of Physics
Morningside College, University of Iowa.



HORACE B. HAWTHORN
B.S., M.S., Ph.D.

Professor of Sociology
Iowa State College, University of
Wisconsin, University of Iowa.

MARIAN HOWE
B.S.

Instructor in Commercial
Iowa State College, Ames Business
College, Gregg College, Chicago.



HENRY F. KANTHLENER
A.B., A.M.

Professor of Romance Languages
Cornell College, Harvard University, In-
stitut Francais and University of Madrid,
University of Chicago, University of
Dijon, National University of Mexico.

KATHERINE KAULL KINNEY
Mus. B.

Instructor in Pianoforte
University of Kansas, Eastman School of
Music, Voice with Richard Halliday,
Piano with Lawrence Schauflier.



GORDON J. KINNEY
Mus. B.

*Instructor in Violoncello and
Double Bass*

Maas School of Music, Eastman School
of Music, Student of Karl Agnesy,
Nelson Watson.

JAMES E. KIRKPATRICK
A.B., A.M., Ph.D.

Professor of Education
Cornell College, University of Iowa.

ETHEL THOMPSON KUCINSKI
Mus. B.

Instructor in Pianoforte

Morningside College, Eastman School of
Music, Chicago Musical College, Cleve-
land Institute, Juilliard School of Music,
Student of Rudolph Ganz, Raymond Wil-
son, Arthur Loesser, James Friskin.

LEO KUCINSKI
Mus. B.

Head of Violin Department
Morningside College, Warsaw Conserva-
tory of Music, Oberlin Conservatory of
Music, Cleveland Institute of Music,
Juilliard Graduate School of Music,
Pupil of Edward Izbickowski, Charlotte
Demuth Williams, De Ribaupierre, Albert
Stoessel, Rubin Goldmark, Noam
Blinder.



HELEN I. LOVELAND
A.B.

*Professor Emeritus of English
Language*

Smith College, Oxford University.

ELIZABETH NEWTON
MACCOLLIN
A.B., Mus. B.

Instructor in Voice
Morningside College, Oberlin Conserva-
tory of Music, Lake Geneva, Student of
L. A. Torrens.



PEARL AMUNDSEN
B.S.

Assistant Librarian
University of South Dakota, University of
Chicago, University of Illinois.

CLARA LOUISE ASMUS
Mus. B.

Instructor in Pianoforte
Morningside College, Chicago Musical
College.



HAZEL CARTER
B.S., A.M.

*Head of School Music Depart-
ment and Instructor in
Pianoforte*
Missouri State Teachers College,
Columbia University.

JAMES AUSTIN COSS
B.S., M.S.

Professor of Chemistry
Illinois Wesleyan University, University
of Illinois, University of Chicago,
Clark University.



EARLE E. EMME
A.B., B.D., A.M., Ph.D.

Professor of Psychology
Northwestern University, Garrett Biblical
Institute, Columbia University, Boston
University, University of Chicago,
University of Iowa.

JOHN GARRETT FELTON
B.A., M.A.

*Head of Department of Speech
and Dramatics*
University of Minnesota, University of
Iowa.

PAUL MACCOLLIN
A.B., Mus. B.

*Director of the Conservatory of
Music and Professor of Voice*

Oberlin College, Morningside College,
Oberlin Conservatory of Music, Lake Ge-
neva, Pupil of Dr. Carl Dufft, Ellison
Van Hoose.

CECIL E. MARSHALL
B.A., M.A., Ph.D.

*Head of the Department of
History*

Morningside College, University of Iowa.



RUTH McDONALD
A.B., M.S.

Assistant in Biology

Morningside College, Virginia Polytech-
nic Institute, Iowa State College.

MARCIA MCNEE
A.B., A.M.

*Instructor in Elementary
Education*

Upper Iowa University, University of
Chicago, University of Iowa, University
of Minnesota.



EDWARD A. METZ
Mus. B.

Instructor in Pianoforte

Boguslawski College of Music, Chicago
Musical College, Curtis Institute, Juilliard
School of Music, Pupil of Mois-
saye Goguslawski, Louis V. Saar, Tom-
ford Harris, Louise Robyn, Ernest Hut-
cheson, Austin Conradi, Harold Bauer,
Angella Diller, James Friskin.

MENDAL B. MILLER
A.B., A.M.

*Assistant Professor of Economics
and Sociology*

Greenville College, University of South-
ern California, University of Minnesota.





JEAN SCOTT

B.S.

Instructor in Physical Education for Women

University of Illinois.

THOMAS C. STEPHENS

A.B., M.D.

Professor of Biology

Adrian College, University of Chicago, Kansas State University, Kansas City University, Marine Biological Laboratory, University of Iowa, University of Michigan.



JOHN WILSON STEWART

B.A., M.A.

Professor of Economics

Geneva College, Montana State University, University of Iowa, University of Illinois, University of Washington.

LAURA TASCHE

B.S.

Instructor in Commercial

University of South Dakota, Spearfish Normal, Aberdeen Normal, Fort Wayne Business Institute.



EVERETT TIMM

B. Mus.

Head of Wind Instruments Department

Morningside College, Juilliard School of Music, Eastman School of Music, Pupil of Donald Lentz, George Carlson, Georges Barre, Arthur Loda, Daniel Groth, Donald Schmid, Chautauqua Summer School.

ROBERT N. VAN HORNE

Ph.B.

Professor of Mathematics

Morningside College, John Hopkins University, University of Chicago.



HARRIET P. WIRICK

A.B., A.M., B.S.

Librarian

University of Wisconsin, University of Minnesota, University of Illinois.



VICTOR V. SCHULDT

B.D.

Director of Admissions

Morningside College, Garrett Biblical Institute, Boston University, University of Chicago.



T. N. McCLURE

Bursar

Vincennes University, University of Chicago.



FAITH F. WOODFORD

B.A., B.Mus.

Instructor in Piano, History of Music, and English

Morningside College, Berlin Conservatory of Music, University of Michigan, Pupil of Emil Liebling, Alberto Jones, Clarence Eddy, Joan Doane, Olaf Anderson, Howard Wells, Palmer Christian.

ROY J. SWEET

Field Representative

RUTH HAYWARD

A.B.

Manager of Bookstore

Ft. Dodge Junior College, Morningside College.



MRS. MAE MACARTHUR

Bookkeeper

Western Union College, National Business Training School.



MIRAH MILLS

A.B., A.M.

Professor of English and Secretary of the Faculty

Morningside College, University of Chicago, University of Michigan, University of Southern California.

ETHEL RUTH MURRAY

A.B., A.M.

Registrar and Assistant Professor of Ancient Languages and History

Morningside College, University of Illinois, Columbia University.



JAMES REISTRUP

B. Mus.

Head of Piano Department

Morningside College, Pupil of Emma Sage, J. Erick Schmall, Theo. Otterstrom, Rudolph Ganz, Fritz Voegelé, Cecil Burleigh.

ROBERT GLEN ROGERS

A.B.

Instructor in Physical Education and Assistant Athletic Director

Morningside College, University of Illinois.



ELSYE TASH SATER

A.B., A.M.

Instructor in English

Augustana College, University of Virginia.

JASON M. SAUNDERSON

A.B.

Professor of Physical Education and Director of Athletics

Albion College.



MINETTA MILLER

A.B.

Secretary to the President

Dakota Wesleyan, Morningside College.



ILA BUNCH

Cashier

Morningside College.

VIRGINIA THOMAS

A.B.

Publicity

Morningside College.

LILLIAN MORGAN

B.S.

Manager of Women's Residence Halls

Iowa State College.

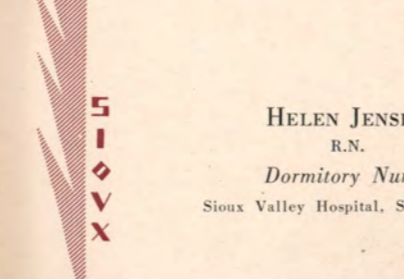


HELEN JENSEN

R.N.

Dormitory Nurse

Sioux Valley Hospital, Sioux Falls.



MARJ BOCK

R.N.

Dormitory Nurse

Dakota Wesleyan, Methodist State Hospital, Mitchell.



Staid Seniors



Class of 1940

OFFICERS

- President Arthur Lundblad
- Vice-President..... B. Roy Brown
- Secretary-Treasurer Janet Coe
- Student Council Representative..... Genevieve Whittington



1
4
0

S
I
D
V
X

1
4
0

S
I
D
V
X

1
4
0

S
I
D
V
X

48900

DELORES EMILY COOK

B.S.M.
Klemme, Iowa

Alpha Sigma, Directress, 3, Musician, 4;
Sigma Mu; Chapel Choir, 1, 2, 3, 4;
College League, 2, 3.

"Let those who will be clever;
I'll win with a song."

DAVID DENNY

A.B.
Rockford, Illinois

Independent; Psi Chi, 3, 4; Track, 1, 2,
3, 4; Cosmopolitan, 1, 2, 3, 4, President,
4; Collegiate Players, 1, 2; Sioux Scalp-
ers, Chief, 4; Biology Club, 1, 2;
Health Attendant, 4.

"A friendly persona'ty is the
first step to success."

HARLAN A. DEWELL

B.S.
Sioux City

Independent; Pre-Engineers.

"To one girl constant never."

VERONA DEMOND

A.B.
Council Bluffs, Iowa
Iowa State College

Kappa Pi Alpha, Corresponding Secre-
tary, 3; Phi Sigma Iota, President, 4;
Sigma Tau Delta; Collegian Reporter, 2,
3, Editorial Assistant, 3; "Sioux," 4.

"Clever, capable, and
conservative."

NELLY DEVRIES

A.B.
Orange City, Iowa

Northwestern Jr. College, Orange City
Alpha Sigma, Vice-President, 4, Corres-
ponding Secretary, 4; Sigma Tau Delta,
Vice-President, 4; Phi Sigma Iota; Ves-
per Choir, 4; Band, 2; Agora Board, 4.

"A Dutch treat."

GARY FISHER

A.B.
Sioux City

Independent; Collegian Reporter, 2, 3, 4.

"Girls are so unnecessary."



JEAN FOWLER

A.B.
Fort Dodge, Iowa

Kappa Zeta Chi, Usher, 2, Treasurer, 4;
Pi Gamma Mu, Program Chairman, 3, 4;
W. A. A., 1, 2, 3; College League, 1, 2,
3; W. S. G. A.; Pep Club, 2, 4.

"My fella says . . ."

CONSTANCE MAY GALL

A.B.
Sioux City

Kappa Zeta Chi, Librarian, 2, Recording
Secretary, 3, Critic, 4, Vice-President,
4; Vesper Choir, 1; Pep Club; Collegi-
ate Players, Secretary, 4.

"Nothing is so contagious as
pep."

BETTY LOU GREENE

A.B.
Sioux City

Kappa Pi Alpha, Chaplain, 2, Treasurer,
3, President, 4; Alpha Psi Omega, Sec-
retary-Treasurer, 3; Sigma Tau Delta;
Phi Sigma Iota; Collegiate Players,
President, 3; Manuscript Club, President,
2, 3, 4; Collegian Reporter, 2; "Sioux,"
2; "Manuscript" Editor, 3, 4;
"Who's Who."

"Genius is often but perseverance
and hard work in disguise."

LUCILLE FRITZSCHE

B.S.M.
Pringhar, Iowa

Independent; Mu Phi Epsilon, Presi-
dent, 4; Chapel Choir, 1, 2, 3, 4.

"If life is a song, the world is
mine."

FRANCES MARY GASINK

A.B.
Sioux City

Independent; Psi Chi; Phi Sigma Iota,
Historian, 4; W. A. A., 2, 3; College
League, 2, 3; M. C. A., 2, 3; Cosmo-
politan Club, Secretary, 4.

"Still water runs deep."

INEZ GROVE

A.B.
Fulton, South Dakota
Dakota Wesleyan University

Kappa Pi Alpha, Sergeant-at-Arms, 4;
Chaplain, 4; Psi Chi, Vice-President, 4;
M. C. A., 4; Biology Club, 4.

"One reason it might be pleasant
to be sick."



VIRGINIA ALLEN

A.B.
Chicago, Illinois

Kappa Zeta Chi, Chaplain, 3; Eta Sigma
Phi, 3, 4; W. A. A., 1, 2, 3, 4, Secre-
tary, 3, Reporter, 2; Intramural; "Sioux"
Typist, 4.

"She won't be teaching long."

DOROTHY D. BROOKE

B.S.M.
Burt, Iowa

Choffy Jr. College, Ontario, Calif.
Kappa Pi Alpha, Sergeant-at-Arms, 3;
Mu Phi Epsilon, Historian, 4; Vesper
Choir, 1, 2, 3, 4; Symphony, 3, 4;
W. S. G. A., 4.

"A petite blonde with winning
ways."

GLEN R. BURROW

A.B.
Sioux City

Phi Sigma, President, 3; Football, 1, 2,
3, 4; Basketball, 1; Track, 1; "M"
Club, 2, 3, 4.

"Silence is golden and I'm
bankrupt."

JEANNE MARGARET
ANDERSON

B.S.M.
Sioux City

Kappa Pi Alpha, Sergeant-at-Arms, 2;
Sigma Mu; Vesper Choir, 1, 2, 3; Band,
1, 2, 3, 4; Flute Quartet; French Quint-
tet; Symphony, 1, 2, 3.

"It's not the heat, it's the
Timm-idity."

B. ROY BROWN

A.B.
Sioux City

Independent; Pi Gamma Mu, Vice-Presi-
dent; Sigma Tau Delta; Eta Sigma Phi,
Vice-President; Intramural; Chapel Choir,
1; Band, 3; M. C. A., 1, 2, 3, 4; Min-
isterial Association, 1, 2, 3; Collegian
Reporter, Editorial Assistant, 4.

"Beware, Ladies Aid, here he
comes."

JANET COE

B.S.
Sioux City

Alpha Sigma, Recording Secretary, 2,
Vice-President, 3; Inter-Sorority Council,
3, President, 4; Intramural, 2, 3, 4;
W. A. A.; Student Council, 4.

"Happy are those who have the
gift of making friends."

MARGARET GUSTESON

A.B.
Sioux City

Kappa Pi Alpha, Sergeant-at-Arms, 2,
Hall Chairman, 2, Recording Secretary,
3, Vice-President, 3, President, 4; Sigma
Tau Delta, Vice-President, 4; Chapel
Choir, 1, 2, 3, 4; Manuscript Club;
"Sioux," 4.

"Nearly all are born smart; the
good-looking don't have to
keep it up."

ROBERT W. HAKALA

B.S.
Virginia, Minnesota
Virginia Jr. College

Independent; Pi Gamma Mu, 3, 4; Psi
Chi, 3, 4; Football, 3, 4; "M" Club,
3, 4, President, 4; Student Council, 4;
Psychology Club, 3; Intramural, 3, 4.

"There's something about all red-
heads that I can't resist."

ALICE VIRGINIA HANSON

A.B.
Odebolt, Iowa

Kappa Zeta Chi, President, 4; Inter-
Sorority Council, 4; W. A. A., 4; Col-
legiate Players, 3, 4, Vice-President, 4;
Sioux Scalpers, 4; Collegian Reporter, 4.

"We are of the opinion that Don
is lucky."

DEVON H. HAHN

A.B.
Cherokee, Iowa

Sigma Theta Rho; Band, 1, 2, 3, 4;
Brass Quartet, 2; Trumpet Trio, 3; Sym-
phony, 3; Collegian Reporter, 1, 2.

"He likes to blow—his horn."

ADELAIDE H. HANSEN

A. B.
Sioux City

Independent; Collegiate Players, 3, 4.

"She can go to town—on a
typewriter."

ALTA CLAIRE HARRISON

A.B.
Washta, Iowa

Kappa Pi Alpha, Vice-President, 3;
Pep Club.

"There are no troubles that a
twinkle and a giggle
won't cure."



MILLCENT MARIE JENSEN

B.S.M.

Irene, South Dakota
Dakota Wesleyan University

Kappa Pi Alpha, Critic, 3, Hall Chairman, 3, Vice-President, 4, Corresponding Secretary, 4; Sigma Mu; Vesper Choir, 2, 3, 4; College League, 2; M. C. A., 2, 3, 4; Program Committee, 3, 4.

"Happiness is a disease and I have a bad case of it."

LAWRENCE JOHNSON

A.B.

Sioux City

Psi Chi, Vice-President, 3, President, 4; Pi Gamma Mu; Kappa Chi; Alpha Psi; Chapel Choir, 1, 2, 3, 4; Band, 1, 2, 3, 4; Symphony; M. C. A., 1, 2, 3, 4; Collegiate Players.

"A man of many sides and all of them excellent."

RALPH KITTERMAN

A.B.

Kingsley, Iowa

Sigma Theta Rho, 1; Ministerial Association, 2, 3, 4, President, 2; Chapel Choir, 1, 2, 3, 4; M. C. A., 1, 2, 3, 4.

"The gift of speech is a powerful one."

IRENE M. JOHNSON

A.B.

Sioux City

Kappa Pi Alpha, Librarian, 3, Recording Secretary, 4, Corresponding Secretary, 3; Sigma Tau Delta; "Sioux," 2, 3, Editor, 4; Manuscript Club, 2, 3, 4, Secretary-Treasurer, 3, Vice-President, 4; Collegiate Players, 2; Associate Editor of "Manuscript," 3; Collegian Reporter, 3; "Who's Who."

"Diversity of interests with constancy of ideals."

LUCILLE BARBARA JOHNSON

B.S.M.

Sioux City

Independent; Sigma Mu, President, 3; Mu Phi, Chaplain, 4; Vesper Choir, 1, 2, 3, 4; Band, 4.

"Music is well said to be the speech of angels."

KATHLYN MARIE KOLP

A.B.

Manson, Iowa

Kappa Zeta Chi, Usher, 2, 3, Librarian, 3, Critic, 4; Chapel Choir, 2, 3, 4; Vesper Choir, 1; College League, 1, 2; M. C. A., 1, 2, 3, 4; Agora, Treasurer, 2; Junior Class Secretary; Collegiate Players, 3, 4; Student Council, 4; W. S. G. A., President, 4; "Who's Who."

"A good disposition promotes popularity."



JOHN JOSEPH KRZMARICH

B.S.

Ironwood, Michigan
Ironwood Jr. College

Independent; Football, 3, 4; Basketball, 3; "M" Club, 3, 4; Psychology Club; Intramural.

"Oh, those dimples!"

ELLA L. LAURITSEN

A.B.

Sioux City

Alpha Sigma, Treasurer, 4; Phi Sigma Iota, Vice-President, 3, Secretary, 4; Vesper Choir, 2.

"Proof that thoroughness pays good returns."

MARGARET LONG

A.B.

Sac City, Iowa

Kappa Zeta Chi, Usher, 2, Inter-Sorority Council, 3, Critic, 4, Vice-President, 4; Alpha Psi Omega, Vice-President, 4, Secretary, 4; W. A. A., 1, 2; Vesper Choir, 1, 2; Collegiate Players, 1, 2, 3, 4, Secretary, 2, Vice-President, 3, President, 4; "Sioux," 3; Student Council, 3; Ishkoodah, President, 1.

"A rare combination—beauty and sweetness."

ANNA MARIE LARSON

A.B.

Sioux City

Kappa Pi Alpha, Hall Chairman, 2, Social Chairman, 3, Corresponding Secretary, 4, Treasurer, 4; Sigma Tau Delta; May Queen, 1; Pep Club, 2, 3; Collegiate Players, 1, 2.

"Who said beauty was only skin deep?"

BETTY SIMPSON LING

B.S.M.

Foochow, China
Hwa Nan College

Independent; Mu Phi Epsilon, 3, 4, Recording Secretary, 4; Vesper Choir, 2, 3, 4, President, 4; College League, 2, 3, 4; M. C. A., 3, 4; Cosmopolitan Club, 2, 3, 4, Vice-President, 4, Treasurer, 4.

"Honor lies in honest toil."

NANCY ELLEN LOWRY

B.S.M.

Cherokee, Iowa

Kappa Zeta Chi, Chaplain, 4; Mu Phi Epsilon, 4; Sigma Mu, 3, 4; W. A. A., 3, 4; Vesper Choir, 1, 2, 3, 4; String Quartet, 1, 2, 3, 4; Symphony, 1, 2, 3, 4; M. C. A.

"Black is my true love's hair, but not her disposition."

MORGAN HARRISON

A.B.

Sioux City

Independent; Alpha Psi Omega, 3, 4, Vice-President, 3; Psi Chi, 3, 4; Football, 1; Intramural; Student Body President, 4; "Who's Who."

"The last of the eligible bachelors."

LETHA HOWES

A.B.

Sioux City

Independent; Pi Gamma Mu, 3, 4; Psi Chi, 3, 4, Secretary, 3, 4; Collegian Reporter, 4; Psychology Club, Secretary, 3.

"A girl of influence in the history department."

ROGER HUGHES

B.S.

Sioux City

Alpha Tau Delta; Intramural.

"Wake me when the bell rings."

WALTER LEROY HURD

A.B.

Stanhope, Iowa
Webster City Jr. College

Sigma Theta Rho, Chaplain, 3, President, 4; Psi Chi, 3; Inter-Fraternity Council, 3.

"Walt and his 'Y' boys."

GEORGE W. ISEMINGER

B.S.M.

Sioux City

Independent; Alpha Psi Omega, 3, 4, President, 4; Chapel Choir, 1, 2, 3, 4; Male Quartet, 1, 2, 3, 4; Mixed Quartet, 1, 2, 3, 4; Madrigal Group, 3, 4; Phi Mu, Treasurer, 4.

"Sorry, girls, I'm taken."

MILFORD EUGENE JACOBSEN

B.S.

Sioux City

Independent; Psi Chi, 4; Pi Gamma Mu, 4.

"Be gone dull care; I have no time for you."

ARTHUR LUNDBLAD

A.B.

Kiron, Iowa

Phi Sigma, President, 4, Sergeant-at-Arms, 3, Vice-President, 3; Football, 1, 2, 3, 4; Vice-President of Class, 3; President of Class, 4.

"His future is well taken care of."

LESTER MENKE

A.B.

Calumet, Iowa

Alpha Tau Delta, Sergeant-at-Arms, 2, President, 4; Alpha Psi Omega, Vice-President, 4; Vesper Choir, 1; College League, 1, 2; M. C. A., 4; Collegiate Players, 2, Secretary; Cosmopolitan Club, Treasurer, 3; "Sioux" Business Manager, 3, 4; President of Class, 2; Health King, 4; "Who's Who."

"Heil, the Kingfish!"

DONALD H. MICHAELSON

B.S.

Sioux City
University of Nebraska

Phi Sigma, Pledgemaster, 3, Treasurer, 4, President, 4; Football, 4; Basketball, 2, 3, 4; "M" Club, 2, 3, 4; All-Conference Basketball Team, 2, 3.

"Why are all the nice men married?"

MINETTA MULLER

A.B.

Parker, South Dakota
Dakota Wesleyan University

Independent; Pi Gamma Mu, 3, 4, President, 4; Psi Chi, 4; Board of Control, 3, 4, Secretary, 4; "Sioux," 4; Collegiate Players, 2, 3, 4.

"Prexy's personable pencil-pusher."

THOMAS WILLIAM MOON

B.S.M.

St. Ansgar, Iowa

Independent; Sinfonia, Secretary, 4; Chapel Choir, 1, 2, 3, 4; Madrigal, 2, 3, 4; Collegiate Players, 1, 2; Orchestra, 1; String Trio, 1; "Messiah" alternate, 2, 3, 4.

"If man is what he thinks he is, I'm great."

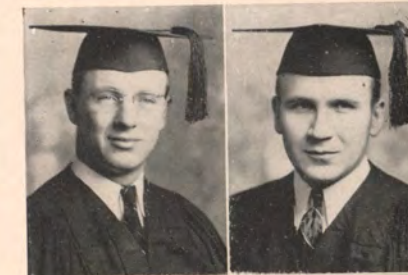
DEON MOOR

A.B.

Sioux City

Kappa Zeta Chi; Eta Sigma Phi, Treasurer, 3, Vice-President, 4.

"Even the littlest candle casts a far beam."



RAY PORT

B.S.
Akron, Iowa

Independent; Football, 1, 2, 3, 4; Intramural, 1, 2, 3, 4; "M" Club, 3, 4.

"Such eye-lashes are the envy of many a girl."

HELEN MARGUERITE POSEY

B.S.M.
Sioux City

Independent; Sigma Mu, 3, 4; Vesper Choir, 1, 2, 3, 4.

"Few have the courage to appear as good as they really are."

MARIAN PRESTON

A.B.
Sioux City

Kappa Pi Alpha, Social Chairman, 2, Recording Secretary, 3, Vice-President, 4; Pi Gamma Mu; Collegiate Players, 1, 2.

"Efficiency is the secret of getting much done."

JOHN PROSSER

A.B.
Sioux City

"Count the votes, boys, count the votes."

ARNOLD B. RUDD

B.S.M.
Sioux City

Alpha Tau Delta; String Quartet, 1, 2, 3, 4; Symphony, 1, 2, 3, 4; President of Conservatory Student Body, 4, Vice-President, 3.

"A complexion like his name."

LEROY BASIL SHELEY

A.B.
Paullina, Iowa

Independent; Pi Gamma Mu; Psi Chi.

"Milford's man Watson."



LEO SMITH

A.B.
Mapleton, Iowa

Phi Sigma, Sergeant-at-Arms, 1, Secretary, 2, President, 3; Football, 1, 2, 3, 4; Inter-Fraternity Council, 3; Sophomore Class Secretary.

Assistant to Assistant Bursar Bunch."

RUTH M. SMITH

A.B.
Sheldon, Iowa

Alpha Sigma, Chaplain, 4; Chapel Choir, 3, 4; Band, 3; College League, 3, 4; M. C. A., 3, 4; Secretary; Sophomore Class Vice-President.

"Worry never made anyone great—why should I worry?"

ANNA STEINBRENNER

Sioux City

ALFRED P. STROZDAS

A.B.
Sioux City

Alpha Tau Delta, Treasurer, 2; Psi Chi, 4; Pi Gamma Mu, 4; Basketball, 1, 2, 3, 4; "M" Club, 3, 4; Intramural, 2, 3, 4; Collegian Reporter Sports Editor, 4; Student Body Vice-President, 4; "Who's Who."

"As impartial as a traffic light except in matters of the heart."

JOHN SWANSON

A.B.
Sioux City

Independent; Sigma Pi Sigma; Pre-Engineers, Treasurer, 3, President, 4; Health Attendant, 3.

"Why must some be born with all the brains?"

IRVINE THOE

A.B.
Lake Mills, Iowa

Kappa Zeta Chi; Sigma Tau Delta, Secretary, 4; Pi Gamma Mu, Secretary; Psi Chi; College League, 1, 2; M. C. A., 1, 2, 3, 4, President, 3; President of Cooperative House, 4.

"Not too serious, not too gay—nice in a charming sort of way."



HOWARD NIELSEN

A.B.
Turin, Iowa

Dana College, Blair, Nebraska
Sigma Theta Rho, Chaplain, 2, 3; College League, 2; M. C. A., 2, 3.

"Why is that, Professor?"

LYLE OBERLIN

B.S.
Laurens, Iowa
Beta Beta Beta.

"He can because he thinks he can."

DOROTHY ANN OLSON

A.B.
Sioux City

Kappa Zeta Chi, President, 4; Sigma Tau Delta, 3, 4; Alpha Psi Omega, 2, 3, 4, President, 3; W. A. A., Vice-President, 4; Intramural; Miss Morningside, 1939; "Sioux" Editor, 3; Collegiate Players, 1, 2, 3, 4; "Who's Who," 4; Agora President, 4; "Yumph Girl," 2; Beauty Queen, 3.

"An all around girl liked by everyone."

LESTER OLSON

A.B.
Bradgate, Iowa

Sigma Theta Rho, Pledgester, 2, Treasurer, 3, President, 4; Inter-Fraternity Council, 2, 4; Basketball, 1; College League, 1, 2, 3; M. C. A., 2, 3; Student Council, 2; Class President, 3; Business Manager of Collegian Reporter, 3; Cosmopolitan Club, 3; "Who's Who."

"In this case, girls prefer blonds too."

HELEN OSBEY

A.B.
Sioux City

Independent; Psi Chi; Sigma Tau Delta; Pi Gamma Mu; Eta Sigma Phi, President, 4, National Secretary, 4; "Sioux," 4; Student Council, Secretary; Miss Morningside Attendant; "Who's Who."

"All this and heaven too?"

MARLYN PEDERSON

B.S.
Lennox, South Dakota

Independent; Intramural, 1, 2, 3, 4; Economics Club, 1, 2; Aviation Club, 2.

"Talking comes by nature, silence by wisdom."

JACK THOMPSON

A.B.
Mapleton, Iowa

Phi Sigma; Football, 1; Intramural.

"When in doubt, 'tis safer to be silent."

JOHN B. THROWER

A.B.
Sioux City

Alpha Tau Delta, Chaplain, 3; Intramural, 1, 2; Collegiate Players, 1, 2, 3, 4.

"The harder I try the gooder to be, the worsen I am."

FRANK VAN DER MATEN

B.S.M.
Boydton, Iowa

Northwestern Jr. College, Orange City
Vesper Choir, 2, 3, 4; Band, 2; String Quartet, 4; Symphony, 2, 3, 4.

"Life is a serious business and I'll treat it as such."

LORRAINE VERSTEGEN

B.S.
Sioux City

Kappa Pi Alpha, Recording Secretary, 4, Social Chairman, 4.

"Gracious is the word for Laurie."

PATRICIA DORINE WARNER

A.B.
Sioux City

Independent; Sigma Tau Delta, 3, 4, President, 4; W. A. A., 1, 2, 3, 4, Board, 3, 4; Manuscript Club, 3, 4; "Sioux," 2, 3, 4; Collegian Reporter, 1, 3, 4.

"Quiet until you know her."

JOYCE M. WEED

A.B.
Sioux City

Kappa Zeta Chi, Recording Secretary, 4; W. A. A., Treasurer, 3, President, 4; Health Attendant, 2.

"Joyce and John—proof to the physicist that likes attract."

Jolly Juniors

GRACE BINGAMAN
Sioux City

CHARLOTTE CHAMPENY
Sioux City

ROBERT CRAVEN
Sioux City

HILDA DETHLEFS
Sioux City

EDNA ELVING
Sioux City

MARGARET FERRIN
Sioux City

MARVIN FRUM
Danbury, Iowa

ELEANOR JONES
Carroll, Nebraska

MARY JORDAN
Sioux City

CLARA LUTHER
Milan, Illinois

ELLEN PERRIN
Sioux City

ROBERT RULEMAN
Eagle Grove, Iowa

SHIRLEY SMITH
Eagle Grove, Iowa

CLIFFORD SPAYDE
Sac City, Iowa

HELEN WEAVILL
Sergeant Bluff, Iowa

HARRIETT WOODKE
Sioux City

CARETA YOUNGLOVE
Sioux City

GENEVIEVE WHITTINGTON
B.S.M.
Vayland, South Dakota

Alpha Sigma, Historian, 3, Directress, 3, Vice-President, 4, President, 4; Inter-Sorority Council, 4; Sigma Mu; Chapel Choir, 4; Vesper Choir, 1, 2, 3; Band, 1, 2, 3, 4, Business Manager, 4; Madrigal Group, 4; Symphony, 1, 3, 4; Cosmopolitan Club, 2, 3, 4; W. S. G. A., Vice-President, 4; Secretary, Senior Class; "Sioux," 4; Ishkoodah President, 1; Miss Morningside Attendant, 4.

"In harmony with the world."

GORDON WHITVER
A.B.
Walnut, Illinois

Methodist School of Nursing
Independent; Beta Beta Beta, Vice-President, 4; Biology Club, 4, Secretary.

"At last, a doctor in the house."

PACKARD WOLLE
A.B.
Sioux City

Independent; Psi Chi; Intramural; Sioux Scalpers, President, 4; Collegian Reporter, Business Manager, 4; Pep Club, 1; Psychology Club, 3; Economics Club, 1; Cheerleader, 1.

"Grade A, we say, with plenty of cream."



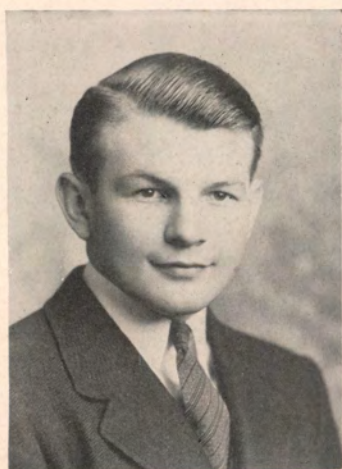
1
4
◇
S
◇
V
X

1
4
◇
S
◇
V
X

Class of 1941

OFFICERS

PresidentDean Forbes
 Vice-PresidentRalph Brown
 Secretary-TreasurerMildred Wikert
 Student Council Representative.....Ruth Olsen



EDYTHE MAE ALBERT

DONNIN AMES

KEITH ARNOLD

MARY LOUISE BARRETT

MILTON BINGER

DORIS BROWN

RALPH BROWN

ROLLIE BUCKHOLZ

DOROTHY CARRIG

WINFRED CHEELY

MAURICE CLARE

ARTHUR CLAYTON

MAXINE ERICKSEN

CELIA FORDYCE



FRANCES FORSBERG

DONALD FRITZSCHE



ROLAND GREFE

EVELYN GUELF



DUANE HALFORD

DALE HARTER



JOYCE HELD

DURETH HELEN HITCHCOCK



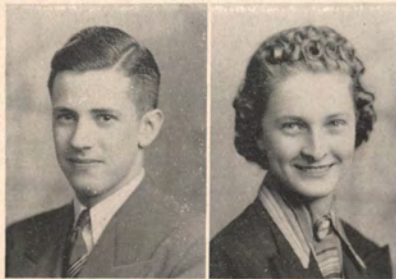
BETTY HUXTABLE

KENNETH JOHNSON



CHARLES CLAYTON

GLENNYS CORDERMAN



DOREEN DALLAM

JOSEPHINE DIXON



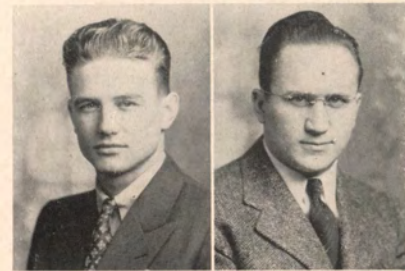
ILA EBERLY

EUGENE EMME



LYLE JOHNSON

FRANK KAHOUN



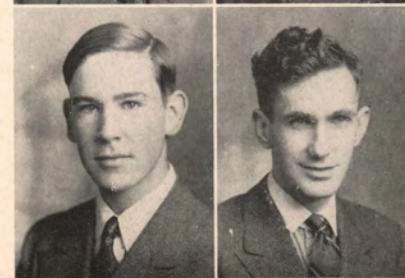
GEORGE KOCH

CLIFFORD LAMKIN



KENNETH LAWRENCE

BRUCE LINDSAY



MARTHA HELEN NELSON

RUTH OLSEN



LUCILLE PIPPETT

RUTH RANCE



CHARLOTTE ROBINSON

IRENE SCHAAL



MAURICE SCHEIDER

GEORGE SCHILLER



BETTY SCHUNCK

ALICE SCOTT



SCHARMEL STURTEVANT
SHAVER

MAX STERN



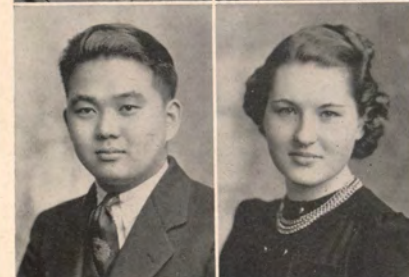
MARY McBRIDE

MELVIN McKNIGHT



LEWIS MAHOOD

OLIVER MOGCK



TAKEO NAGAMORI

NORMA NEILSON



LEONARD NELSON

MARJORIE NELSON

ALICE SWANSON

FRANCES WALKER



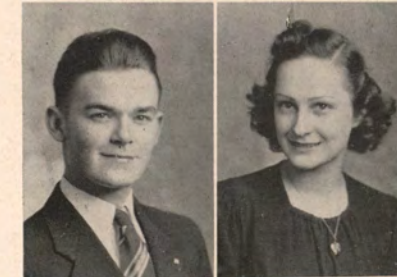
SHIRLEY WALLEN

GARRETT WALLMAN



CHARLES WERT

MILDRED WIKERT



HAROLD WISSINK

AYAKO YAMASHIRO



Sophisticated Sophomores

Class of 1942

1
→
4
◇

S
I
◇
V
X

OFFICERS

President John Kolp
 Vice-President Bernard Feikema
 Secretary-Treasurer Betty Lou Saunderson
 Student Council Representative..... Geraldine Booth



1
→
4
◇

S
I
◇
V
X

1
→
4
◇

S
I
◇
V
X



ROBERT CAINE

LOUISE CAIRY



MARGIE CARLSON

VERNON CASTLE



ALICE CLAYTON

GERALD COBBS



BRUCE CONNOR
DARYLE CRABB

DONALD BALLANTINE
BARBARA BARRY



MARGARET BERG

MARIE BERGQUIST



JAMES BOLTON

BETTY BOOTJER



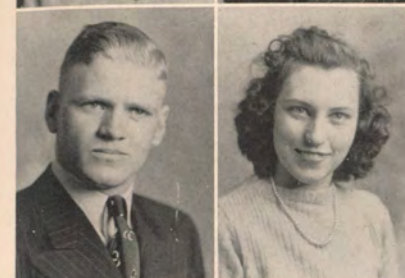
KATHRYN BROWN

HELEN BROYLES



FLORENCE DAHL

ROBERT DANNENBERG



BERNARD FEIKEMA

MAXINE FOSTER

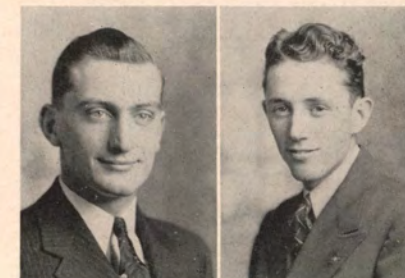


CHARLES GANDEK

BROWN GARLOCK

DOROTHY GARTNER
EILEEN GILSON

EARL GOODENOW
TED GRIER



RAYMOND GUSTESON

CHARLOTTE HACKETT



DORIS HALL

ROBERT HAMEL



MERRIE JUNE HEETLAND

ROBERT HEMPSTEAD





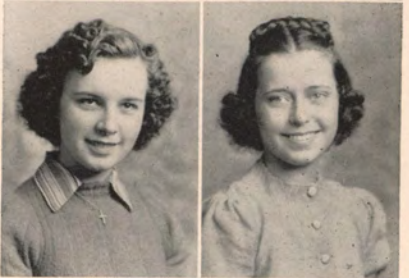
HELEN JOHNSON

JEAN JONES



LAURETTA KING

RUTH KINGSBURY



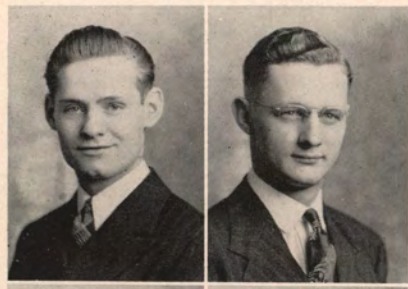
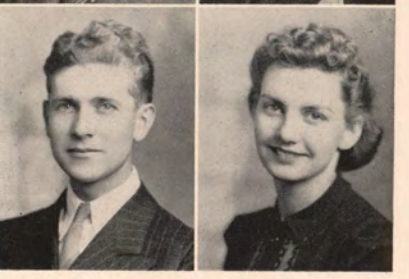
JOHN KOLP

LEROY KUHLMAN



ROMAIN LAMKIN
BETTE LARSON

EDWARD HENDRICKS
EARL HICKS

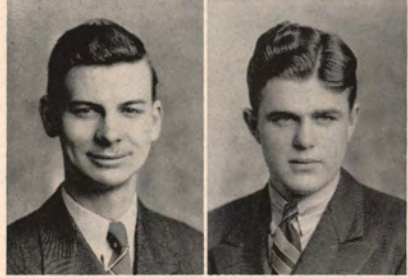


MURIEL HILER

BETTY HOEFER

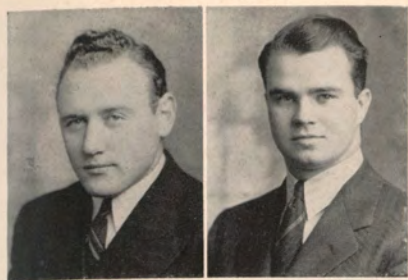
JACK HOLDCROFT

ROBERT JACKSON



EUNICE JEEP

EDITH JENSEN



JOE LEASE

DONOVAN LEOPOLD



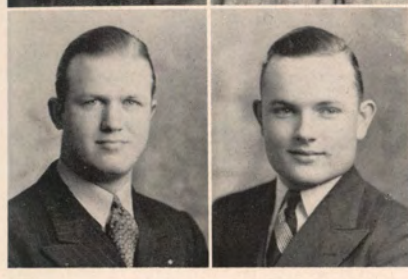
BOB LOWRY

DARREL MCENTAFFER



TED MACUR

KATHRYN MADISON



JOHN MAYNARD
ROY MICHAUD

MARIAN MILLER
DOUGLAS OAKLEAF



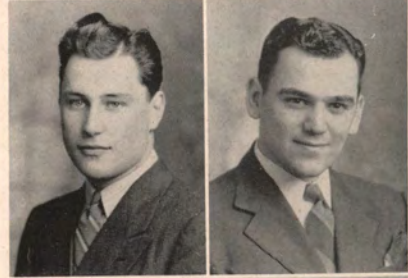
MILDRED PFEIFFER

MAXINE POOLEY



MAYNARD PORTER

ROBERT REESE



CHARLES RICHARDS

ADELE ROBERTS



MARIAN STICKLES

IONE SWANLUND



GERALDINE THOMAS

GLEN THOMPSON



PHYLLIS THORNGREEN

ELNA VAN CAMP



CLARENCE VORIS
ELLA JEAN WADDELL

CLARICE ROHWEDER
FERNE ROLAND



MARJORIE SALSURY

BETTY LOU SAUNDERSON



KATHLEEN SCHATZ

ALMA SHIPLEY



WILLIAM C. SMITH

DOROTHY JEAN SORENSON



1
4
5
S
I
V
X

OPAL WALKER

BYRON WALTER



HELEN WEAVER

BETTY LOU WELDING



H. FREDDIE WELLMERLING

LA VONNE WERTZ



DONALD WIDLER

HOWARD WINTER



LAUREE WOOD



RICHARD WOODS



SHIRLEYMAE ZECHMANN



1
4
5
S
I
V
X

Flippant Freshmen



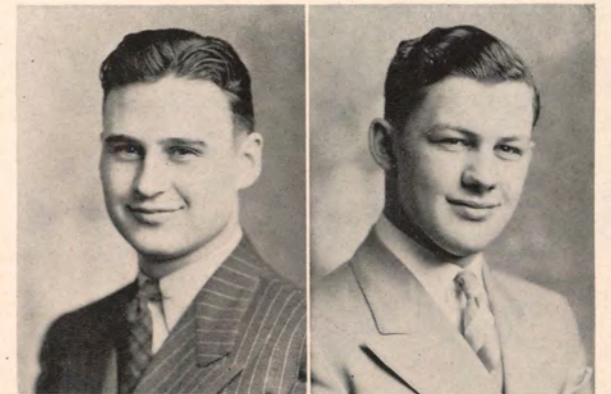
1940
SIX

Class of 1942

1940
SIX

OFFICERS

	<i>First Semester</i>	<i>Second Semester</i>
President.....	Wilson Reynolds	Robert Hicks
Vice-President.....	Merle Stone	Merle Stone
Secretary-Treasurer.....	Angeline Thompson	Angeline Thompson
Student Council Representative.....	Ruth Cowling	Ruth Cowling



DORIS COE

RICHARD CORWIN



FLORENCE COSS

RUTH COWLING



MIRIAM COX

TONI CROW



FRED DANIELS
VIRGINIA DUNLAP

EVELYN ANDERSON
HELEN ANDERSON



BOB BENNETT

METTA BREAW



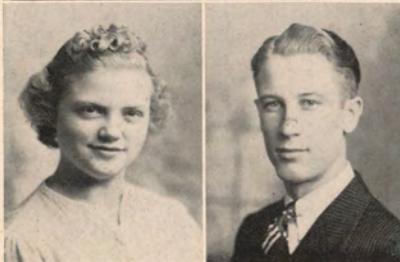
DOROTHY BROWN

EVELYN CAPENER



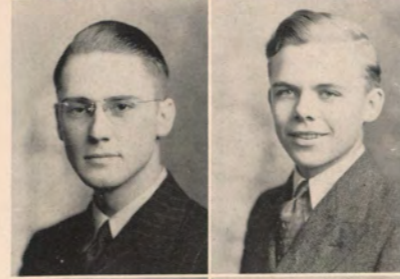
VIRGINIA CARR

GLENN CLARK



HELEN FOSTER

LUCILE GEHRT



JOEL GEISTER

DAVID GIBSON



EVELYN HEWLETT

BOB HICKS



LA VERGNE HILL
RAY HUGHES

ALICE JACOBS
MILDRED JOHNSON



RUTH JOHNSON

LESTER JONES



THOMAS KENNY

FRANCIS KINGSBURY



PHYLLIS KNAPPE

JAMES LEACHMAN



LUCILE ROBERTS

GERALDINE SATRANG



MARIETTA SEAMAN

MARVIN SHULENBERGER



CLIFFORD SKALBY

VERA SMITH



MERLE STONE
NORMAN SUSSMAN

DOROTHY LONG
MAX MCCOY



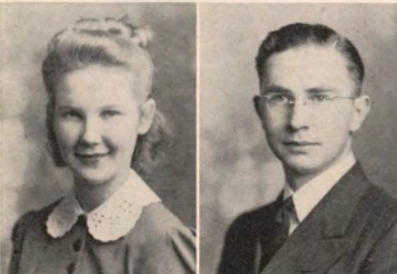
BETTY MACLENNON

EVELYN MURPHY



ZOLA MARCUSSEN

LEONARD REHDER



WILSON REYNOLDS

MARIELLEN RIFENBARK



HARRIETT SWANSON

VELMA SWANSON



MARJORIE SWISHER

ANGELINE THOMPSON



ELEANOR THORPE

JAMES VANDER BERG



GARNET WEDEKING

CHARLOTTE WILLIAMS



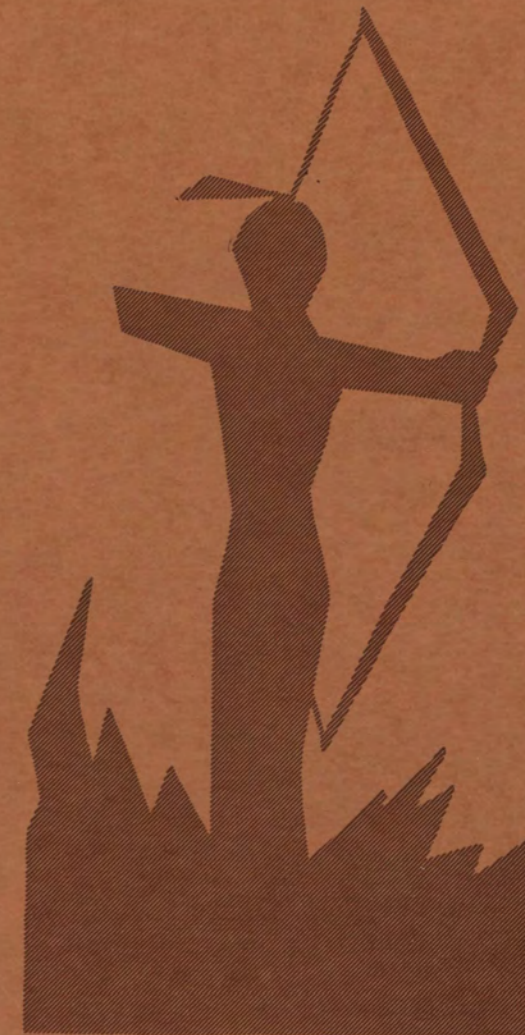
Second Semester Students

FRESHMEN

<i>Name</i>	<i>Home</i>
WILLIAM ROBERT ANDERSON.....	Sioux City
WALTER LEE BRINK.....	Sioux City
RICHARD JAMES BROOKS.....	Sioux City
ROGER EUGENE DAUFFENBACH.....	Sioux City
JIM EVERETT DUNN.....	Sioux City
JOSEPH HAROLD HAFFITS.....	Sioux City
DOROTHE HELEN HANTLA.....	Sioux City
EVELYN MAUDE HEWLITT.....	Rolfe, Iowa
ROY B. HOLLAND.....	Sioux City
JACK ALLAN HOLLOWAY.....	Sioux City
ROBERT J. MAJOR.....	Sioux City
JOHN EDWARD MONTAGNE.....	Sioux City
MARY ADEL PATTERSON.....	Sioux City
MARJORIE EDITH PULLMAN.....	Sioux City
JOSEPH ROSENBLUM.....	Sioux City
JAMES FRANCIS SEGER.....	Sioux City
CHARLES DWIGHT SIMPSON.....	Sioux City
MARGARET ELAINE SLOWEY.....	Sioux City
HELEN MAXINE SMITH.....	Luverne, Minnesota
BILL ELLIOTT STODDARD.....	Sioux City
MARTHA RUTH WALKER.....	Sioux City
THEODORE MORRIS WHICHER.....	Sioux City

JUNIORS

MARJ BOCK.....	Loomis, South Dakota
ROBERT WILLIAM RAE.....	Sioux City
CATHARINE RICH.....	Sioux City
HOWARD BLAKE SHIPTON.....	Sioux City



KJ

Athletics

Morningside is proud to have had the services of an Athletic Director of Coach Saunderson's ability for the past twenty-nine years. We know that we could not find a better coach, nor a finer man to guide the young men of our student body through the developing period of their lives. We feel sure that "Saundy" will be turning out the same fighting teams and develop the same type of man far into the future. This high regard for "Saundy's" ability as a coach and as a builder of men is evidenced by his selection to the honorary position as referee of the Drake Relays for 1940.

I
4
S
I
V
X

Coach J. M. Saunderson



I
4
S
I
V
X



—S. C. Tribune.

The Maroon gridders gave indications of having a winning season in pre-game maneuvers, but a combination of bad breaks and injuries to key men in the Morningside roster resulted in a bad season in the won and lost column.

Wayne Teachers upset the favored Maroons in the opening grid encounter of the season for Morningside. With Woody Hetland, Joe Lease, and George Schiller seeing all their action from the sidelines due to injuries, the Maroons were dumped to the tune of 13-7. Statistically the Maroons were the better team, but the Wildcats out-fought and outscored them with an unorthodox brand of ball.

In the second game of the year, the Maroons dumped the pre-season favorites to win the Conference title by a score of 15-0. It was the best game of the year for the Maroons as they were led by all conference Pete Burrow, who swept the ends and slashed off tackle for most of the yardage the Morningsiders mustered. Ray Port, Morningside guard, was the outstanding defensive line-man for the Maroons, sharing honors with Ned Adams at tackle. Jack Loff and Hap Haenfler played standout roles with Burrow in the backfield.

The Mighty Maroons opened their home season as they romped to a one-sided win over the Dakota Wesleyan Tigers of Mitchell, South Dakota, with a score of 28-0. Dewey Halford and Woody Hetland led the Maroon attack behind an efficiently working line.

—S. C. Tribune.



Fifty



The traditional battle between the South Dakota University Coyotes and Morningside in Stock Yards Park almost proved disastrous for the heavily favored Coyotes as the Maroons went down by the slim margin of 7-6. The teams brought the large crowd to their feet time after time as an inspired Morningside team battled the Coyotes on even terms. The hard hitting of Jim Wernli brought the Coyotes six points in the third quarter, and the educated toe of Ernie Gunderson bought the Coyotes their margin of victory. The Maroons roared back in fury with a drive from their own 27 yard line that culminated with a touchdown pass from Burrow to Feikema. The all important placement kick was blocked. It would be doing both teams injustice to say there were any definitely outstanding players.

The heretofore hapless Omaha Indians suddenly came to life and lambasted the Maroons to the tune of 14-0, with a first half attack that netted both their touchdowns. The Maroons' only threat came in the second quarter when they were stopped on the Indian 25 yard marker by the failure of a lateral pass to click. The Morningsiders were without a doubt a different ball club than that which played South Dakota University the week before.

Morningside's homecoming was spoiled by one lone touchdown thrust in the first half that gave Iowa State Teachers College a 7-0 win over Morningside. A high wind hampered the play of both teams. The Maroons were playing without the services of Ray Port and Jack Loff who were relegated to the sidelines because of injuries. Again the Maroons dominated the statistics.

The following week-end, the luckless Maroons were soundly trounced by the South Dakota State College Jackrabbits at Brookings by a score of 34-13.

Morningside closed their heart-breaking season with a stinging defeat from the Nodaks of North Dakota University, 27-7. Morningside's only score came in the second quarter as Art Lundblad caught a deflected pass in the end zone. The statistics were even, but the Maroon defense was caught napping as the Nodaks pushed over four touchdowns.



ADAMS



BALLENTINE



BURROWS



FEIKEMA



HAENFLER



Fifty-one





1
4
◇

S
I
◇
V
X

PETE BURROW

"Pete" wound up a brilliant career of three years as a regular in the Maroon back-field by being selected as the team's most valuable player by his teammates. "Pete" was also selected all conference quarterback this year. "Pete's" field generalship will be greatly missed by Saundy next year.

JACK LOFF

Jack Loff came to us as a Junior College transfer from Eveleth, Minnesota. He came here as an end, but his speed prompted Saundy to transfer him to the wingback post. Jack was one of the fastest men on the squad.

RAY PORT

Ray Port, scrappy guard, made his second letter as he fought off the injury jinx that has hampered him all through his collegiate career. Ray was one of the unsung heroes of this year's front wall.

ART LUNDBLAD

Art Lundblad battled for three years to gain his position on the Maroon starting line-up. He was converted from a tackle to center to plug up the gap in the center of the line. Art carries on the tradition of small but rugged centers at Morningside.

DON MICHAELSON

"Mike," better known for his basketball prowess, made his first football letter as regular end on the eleven. "Mike," who winds up his athletic career at Morningside this year, is big and rugged.

HAP HAENFLER

Hap was the regular blocking back on the eleven in his sophomore year. He has the reputation of a brother to live up to here, and if first year is any indication, he won't have any trouble.

CHUCK SHERIDAN

"Moose" is one of the brightest lights for next year. He took over a tackle position this year as a sophomore, and opposing tackles are still bemoaning the fact. Chuck is at his best when the going gets rough.

NED ADAMS

Ned is a junior, and served his second year as a letter winner. Ned is a two hundred pounder and alternates between tackle and guard. He is a tough customer, especially when he gets riled.

HAKALA HALFORD

HETLAND KOCH

KRZNARICH LUNDBLAD



1
4
◇

S
I
◇
V
X

DUANE HALFORD

Dewey was again the speed merchant and spark plug of this year's aggregation. He is a junior and this year as last, he alternated with Pete in the running back position. Dewey is little and fast and packs the dynamite of a munitions dump.

GENE KENNEDY

Gene is a speedy back with the unusual ability of being able to play at any spot. Gene made his first letter as a handyman, but should come into his own in his remaining two years as a Maroon.

JOHN LITECKY

A Junior college transfer student, John was hampered by injuries. He is a good pass receiving end, and has another season to make his letter.

STEVE SMILONICH

Another Junior college transfer that made good his first year with Morningside. Steve was playing his first year as a guard, having been transferred from tackle. Steve should do big things next year.

GEORGE SCHILLER

Schiller has the build of a guard and made his first letter at that position last fall. George is in there fighting his heart out all the time, and should gain recognition next year.

DON WIDLER

Don, as a sophomore, was a dependable lineman. He lettered at tackle. Don is hard as nails, and has two more seasons to gain that regular starting position he seeks.

DON BALLANTINE

Don is a big boy who lettered at tackle as a sophomore. He played some very outstanding games at his favorite position. He is a hard worker who should be very valuable in there the next two years.

GEORGE KOCH

George earned his second football letter by alternating with Lundblad at the center post. He is very small for a center, but he more than offset this with fight and speed.

WOODY HETLAND

Woody is another three year regular who ended a brilliant career with the Maroons. Hard hitting Woody is one of the best backs to attend Morningside in recent years. His powerhouse drives through the center of the line will be hard to replace next season.

MICHAELSON PORT

SCHILLER SHERIDAN

SMILONICH WIDLER



1
4
◇

S
I
◇
V
X

JOHN KRZMARICH

John was as tough as his name. John earned his second letter as a regular although hampered by an elbow injury. It was this injury that hit the Maroons the hardest. It is players with John's love of the game and team spirit that makes for winning teams.

BOB HAKALA

Bob was shifted from a guard spot to the fullback post to strengthen it because of Hetland's injury. Bob came from Virginia, Minnesota, and earned two letters here through his aggressive hard play.

LEO SMITH

Leo was the handyman of the squad. He played every position, and although he failed to earn a letter, he was out there battling every inch of the way.

BERNIE FEIKEMA

"Feik" was a sophomore this year, but his greenness didn't show out on the gridiron. Feik gained the reputation of the best pass snatcher on the team, and one of the hardest workers in earning his first letter.

DEAN FORBES

Dean is small for an end, but did himself proud down at Omaha last fall. Dean will have his chance at a regular berth next fall, and we are expecting great things from him.

JOE LEASE

Joe was hampered by a pre-season injury that slowed him up considerably. Joe is one of the hardest blockers on the squad, as well as a tough defensive man. He should help us the next two seasons.

DON LEOPOLD

Don is a ruggedly built boy who was coming along fast at the end of the season. Don could help the Maroons with his speed and size if he would supply the determination. He has two more years.

BOB REESE

Bob did not see any action, but was making it tough for the varsity. Bob has two more seasons.

SWEDE REILLY

Swede, the fighting Irishman, likes it best when the going is rugged. He is a footballer who really loves the game. He is not out there for glory, but to muss up his man, which he usually does.

TOMMY THOMPSON

Tommy understudied two veteran centers this year. He should come into his own, and be one of the Maroons' traditionally strong centers in the next two seasons.

EARL GOODENOW

Earl is a boy who did not play high school football. He looks like an end, and has two more seasons to make a letter.

Hakala, Smith, Leopold, Kennedy, Halford, Burrow, Loff, Goodenow.



McCoy, R. Logue, Steck, Ott, C. Logue, Reynolds, Robar, Stone.

Freshman Football

One of the smallest squads in the history of freshman football answered Coach Honie Rogers' call. The season was not only unique for the size of the squad, but, because of jobs and laboratory work, it was hard for the coach to get enough men together to do the necessary practicing. The squad boasted of such stars as: Charles Logue, Dale Robar, Chet Axthlem, Merle Stone, Orlan Ott, Melvin McNight, Gene Compton, Les Fones, Tom Kenny, Bud Chambers, Lloyd Wiltsey, Russ Logue, Stanley Simmons, Eugent Strover, Jack Steck, and Bob Bennett. Some of these boys showed promise of becoming future Maroons of notable repute.

They played only one game, and that was against the Coyote Pups of South Dakota University. This game ended in a 0-0 deadlock with the future Maroons dominating the statistics, in fact, they did not allow the Coyote Pups a first down.

"M" Club

The "M" Club, consisting of the major letter winners in school, is one of the oldest organizations on the Morningside campus. It has been an active organization of the campus for thirty-two years. The "Men of the M" endeavor to maintain high standards of sportsmanship, develop strong physical specimens, and good moral characters. In addition, the "M" Club has charge of Freshman orientation, Freshman-Sophomore Day, and the Homecoming Parade. The alumni of the organization sponsor an annual dinner and get-together of the old "M" men each year at Homecoming.

OFFICERS

- PresidentRobert Hakala
- Vice-PresidentElwood Hetland
- SecretaryGlen Burrow

Top: Adcock, Litecky, Widler, Strozdas, Haenfler, Sheridan, Michaelson, Ballantine. Middle: Saunderson, Hetland, Denny, Krzmarich, Burrow, Langstaff, Smilonich, Feikema. Front Row: Hakala, Adams, Schiller, Koch, Port, Lundblad, Kennedy, Halford.



As assistant athletic director and head basketball coach, "Honie" Rogers has established a fine reputation and position of respect. "Honie" personifies the tradition established at Morningside, that of providing fine coaches for the high schools of this territory.

Varsity Basketball

Hopes were high as the basketball season approached, with four of last year's regulars returning as well as the reserves, plus the strong freshman squad of the 1938-39 season. While the team lacked size and an undefinable something that prevented it from becoming a consistent winner, Morningside has a spirited fighting team that at times displayed the speed and ball handling ability for which they are famous.

The season began as Morningside opened her 1939-40 basketball session on the home court against the Iowa State College Cyclones of the Big Six Conference. The Maroons showed flashes of power, although going down to defeat to the tune of 34-57. Morningside was in the ball game matching the polished Cyclones basket for basket the first half, but after intermission Iowa State gained control and were never headed. Langstaff and Halford displayed outstanding basketball for the Maroons.

Top: Michaelson, Hanson, Feikema, Goodenow, Sheridan, Loff.
Middle: Litecky, Strozdas, Cobbs, Langstaff, Jones.
Bottom: Graham, Sharp, Adcock, Brown, Halford.

—S. C. Tribune.



Coach Glen Rogers



The Maroons drubbed the Yankton College Greyhounds the following week-end on the home court, 38-27. Honie substituted freely, as the entire Morningside squad looked impressive as they romped to victory over the upstate rivals.

Coach Honie Rogers' proteges then toured Kansas and Missouri, during the Christmas holidays, and met three strong teams from the heart of the basketball country. The first game was played against Washburn College at Topeka, Kansas. Morningside, playing good basketball, lost a hard-fought game, 37-41, after they led throughout the first three quarters of this close game. Strozdas and Adcock looked best for the Maroons.

The following night, Morningside was entertained by the Union Wire and Rope Corporation in Kansas City. The Maroons were handicapped by a tremendous height advantage, and lost a ragged game, 24-36. The weary Maroons met Wichita University the third night and again tasted defeat,



Adcock

Brown



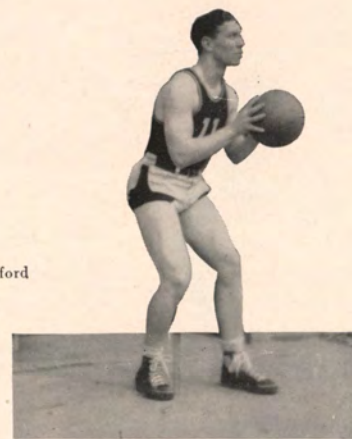
Cobbs



23-36, as the Tigers presented a strong double post offense. Langstaff again led the scorers as he racked up 15 points for Morningside.

Morningside spirit was still high and hopes were undaunted as the Conference season approached. The first conference game was played against the highly favored South Dakota State Jackrabbits at Brookings. The Maroons played outstanding basketball, only to lose in the closing minutes, 39-45. Langstaff led the attack as the entire Morningside team played well.

The following week, Morningside entertained the Bison of North Dakota State, and were again defeated 36-51, as the eventual Conference Champs hit the basket consistently from all angles. Iowa State Teachers took the measure of the Maroons, 33-40, as the Morningsiders again surrendered an early lead at Cedar Falls. Again the luckless Maroons were defeated as Omaha University outplayed us on Omaha court.



Halford

Jones



Hanson



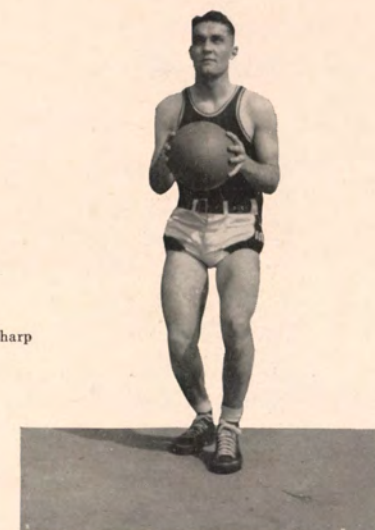


Morningside entertained her ancient rival, South Dakota University, upon the home court, January 6, and could not withstand a second half rally by the Coyotes that spelled defeat, 28-33. The Maroons surprised the Coyotes with 19-11 halftime lead, and went on to maintain a 24-21 margin at the three-quarter mark, but faded in the waning minutes. On the following Monday, the Maroons journeyed to Ames and were defeated by a score of 36-58, which was nearly identical to the first game of the season when the Cyclones also took our measure.

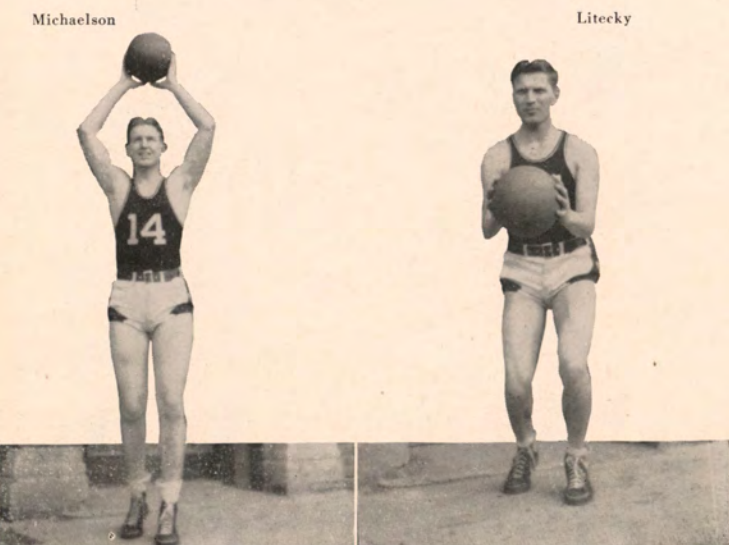
February 3 saw Morningside do something that no other team in the Conference has been able to do, that was to beat North Dakota University three times in a row, in a thrilling over-time game, 41-38. Langstaff and Adcock played outstanding roles in this upset victory. The Maroons suffered their second defeat from the Coyotes of South Dakota Uni-



Langstaff

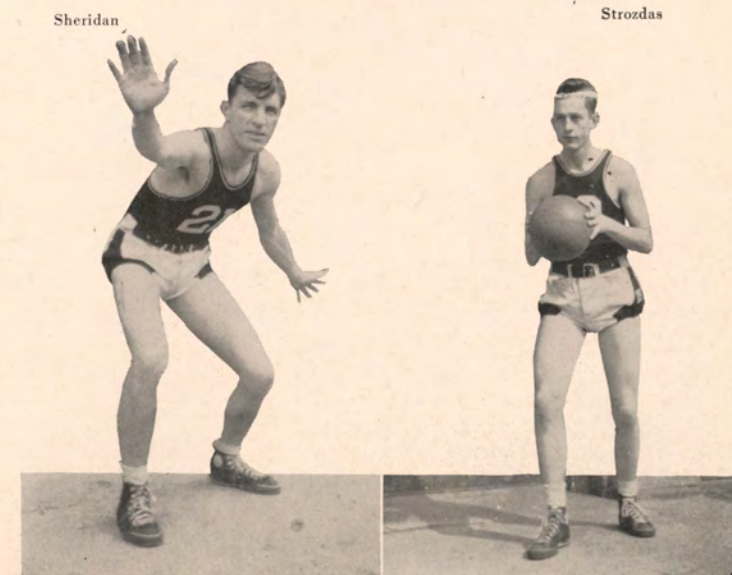


Sharp



Michaelson

Litecky



Sheridan

Strozdas

versity by the score of 33-45, on South Dakota's court, February 6.

Morningside closed her season with two more defeats upon the home court from Omaha, 33-37, and Iowa State Teachers' College, 39-40. Both of these contests were very well played, and they were anybody's ball game up until the final gun.

The Maroons lose two outstanding basketball players from the varsity squad via graduation. Don Michaelson, twice chosen all-conference and one of the finest basketball players Morningside has ever produced, will be greatly missed when Honie issues his call for basketball aspirants next fall. "Mike" has made three letters.

Al Strozdas, a very outstanding defensive guard who was always a threat on offense, and a great team player, will leave a large hole for Coach Rogers to fill. Al has earned two monograms.



Freshman Basketball



Top: Robar, Nutt, DeMaine, R. Logue, C. Logue.
Bottom: Wallen, Wertz, Steck.

The Freshmen this year enjoyed an undefeated season under Coach Hugh Luby's tutelage. They were the bright spot of this year's basketball campaign, and should help tremendously toward Morningside's title hopes in the future.

About thirty-five candidates reported in answer to the call for freshman talent from which the following ten men were chosen: Deiters, VanderBerg, DeMaine, Steck, C. Logue, R. Logue, Robar, Wallen, Wertz, and Nutt. These men bore the brunt of the season's play, and should supplement the returning varsity squad and bounce Morningside back into the thick of the North Central Conference title chase.

THE SEASON'S SUMMARY

Future Maroons.....40	Old Home Bread.....11
Future Maroons.....28	All Stars28
Future Maroons.....40	All Stars26
Future Maroons.....32	South Dakota Frosh.....19
Future Maroons.....38	South Dakota Frosh.....25
Future Maroons.....38	Omaha Frosh18
Future Maroons.....34	Omaha Frosh28
Future Maroons.....51	De Molay32
Future Maroons.....55	Bronson28

Track

Although track is listed as a major sport, and has brought more laurels to Morningside than any other sport, interest has been receding in the past few years until this season. Early indications are that activity will increase with the active lettermen being supplemented by an inexperienced squad that may help regain some of Morningside's track prestige.

Dave Denny is the outstanding hurdler in the Conference, and Vic Alvey should develop into an outstanding half-miler. These two men lettered last season in their favorite events.

Denny

Alvey



TOUCH BALL

COMETS

HORSESHOE CHAMPION

Intramurals

A complete Intramural sports program of nine events was planned for this year. There were two fall tournaments, which were horseshoe and touchball, the former being introduced this year. Al Strozdas won the horseshoe medal while the Comets were the winners of the touchball scramble.

Spirited play marked the intramural basketball schedule in the first of the winter sports, as the Foo Goos and the Sigma Theta Rho fraternity tied at the end of the regular play. The Foo Goos succeeded in downing the Fraternity men in the playoff. Red Langstaff defeated Roy Brown for the ping pong championship.

The spring tournaments consisted of kittenball, golf, and tennis. Interest was high as there were six teams entered for the kittenball tournament. The Intramural Board consists of Ralph Brown, Al Strozdas, George Schiller, and John Litecky.

Harter
Tennis Champ

Top: Foo Goos
Basketball Champs
Bottom: Langstaff, Brown
Ping Pong

Golf



Women's Athletics

Miss Jeanne Scott came to Morningside this year to replace Miss Lois Brinkman as Head of the Women's Athletics Department. She was graduated from the University of Illinois where she majored in Physical Education. She has put forth a great deal of enthusiasm and an interest in all sports and proved herself to be a capable instructor and leader. Under her supervision, the women's athletic department completed four seasonal sports, presented two dance festivals, and conducted a dancing class. Her favorite sports are golf, swimming and horseback riding. Miss Scott organized on the college campus, "Orchesis"—an organization of the study of modern, interpretative, and original dances. Only the upper classmen were members of this group and they presented a modern dance in the Spring Festival.



Miss Jeanne Scott

W. A. A. Board



Top: Warner, Forsberg, Lowry, Nelson, Wallen.
Bottom: Weed, Cheely, Collier.

The W. A. A. board for this year was composed of Joyce Weed, president; Dorothy Ann Olson, vice-president; Shirley Wallen, secretary; Marjorie Nelson, treasurer; Nancy Lowry, badminton chairman; Nancy Kingsbury, basketball chairman; Frances Forsberg, social chairman; Patricia Warner, awards chairman; Winifred Cheeley, publicity chairman; Janice Collier, archery; Virginia Allen, tennis; and Charlotte Robinson, volleyball chairman. This board controlled the women's sports program. Their activities include such sports as tennis, badminton, archery, over-night hikes, golf and other individual sports. They also sponsored the annual "Play Day," attended by Senior girls from surrounding high schools.



R. Kingsbury, Weed, Wikert, Miller, Forsberg, Collier, Smith.



K. Brown, Saunderson, N. Kingsbury, Lowry, Marcussen, Cairy, D. Brown, Waddell. —S. C. Tribune.

Yale-Harvard

On March 15, the annual Yale-Harvard game was played. The two teams were selected for their playing ability, sportsmanship, and the completion of practice hours. The members were chosen by Miss Scott, class captains, basketball captain, and the president of W. A. A.

The game was the best of the season, as the two teams were very evenly matched. The Harvard team nosed out a victory by only one score—20-19. The honorary basketball players were decided upon after the Yale-Harvard game, and they are as follows:

Forwards

Joyce Weed
Marian Miller
Nancy Kingsbury

Guards

Nancy Lowry
Shirley Wallen
Mildred Wikert

The Members of the Yale and Harvard Teams

Yale Team

Joyce Weed, Captain
Shirley Wallen
Frances Forsberg
Mildred Wikert
Janice Collier
Ruth Kingsbury
Maxine Smith
Marian Miller

Harvard Team

Nancy Lowry, Captain
Zola Marcussen
Nancy Kingsbury
Louice Cairy
Ella Jean Waddell
Dorothy Brown
Betty Lou Saunderson
Katherine Brown

Swimming Meet

The annual swimming meet was held at the Y. W. C. A. on March 8. Spectators were entertained with individual and team events of speed and skill. The Sioux City Mariners gave demonstrations as a special feature. The individual awards were won by Geraldine Satrang and Bob Mohr. The team trophy was won by the Kappa Zeta Chi Sorority.



D. Brown, Cairy, Scott, Forsberg, Coe, Nelson, Waddell, Kingsbury, Collier, Weed, Cheely, Hanson.

Winter Festival

The Winter Festival, sponsored annually by W. A. A., had as its theme selections from the "Nutcracker Suite." The story was woven around the nutcracker which was given as a Christmas present to a little child. As he falls asleep beneath the Christmas tree, he dreams about toy soldiers, sugar sticks, etc. The dances, participated in by the women students of the physical education department, represented the dreams of the child. There were many very modern and routine dances that were original and worked out by the dancers. The climax of the story was the throne room of the queen and the visit of the child led by the nutcracker who had come to life.

Spring Festival

In the spring the women's athletic department presents a dance festival similar to the winter festival. It is at this festival that the May Queen is crowned. The queen is a Freshman girl, and is voted upon by the entire student body. There is much pomp and ceremony at this coronation, and it is a very impressive occasion. In 1939 the May Queen was Ruth Kingsbury and attendants were Marian Miller, Katherine Brown, Virginia Boline, and Loretta King. Miss Kingsbury was crowned by Mildred Wikert, the queen of 1938. This year, the spring festival was based upon the progression of the dance, beginning with Indian dances and coming up to the very modern interpretative dances of the present.

Miller, Brown, Miss Kingsbury, King, Boline.



BASKETBALL CHAMPS
Top: Sophomore Team
Bottom: Zet Team

Intramural and Class Tournaments

Intramural and class tournaments were held this year as usual and the four annual sports brought out the interest of all the girls.

Basketball produced keen competition and proved to be a very successful season. This year, the Zets won the round-robin sorority tournament, while the enthusiastic Sophomores captured the class tourney. Members of the Zet team were Nancy Kingsbury, Louise Cairy, Katherine Brown, Marian Miller, Betty Lou Saunderson, Nancy Lowry, Mildred Wikert, Winifred Cheeley, Ella Jean Waddell, Alice Hanson, Joyce Weed, Janice Collier, Dorothy Ann Olson, and Ruth Kingsbury.

The Sophomore team was composed of Katherine Brown, Betty Lou Saunderson, Nancy Kingsbury, Marian Miller, Ella Jean Waddell, and Louise Cairy.

The tournament captains this year were:

Freshman	Zola Marcussen
Sophomore.....	Betty Lou Saunderson
Juniors	Frances Forsberg
Seniors	Nancy Lowry
Zets	Ruth Kingsbury
Pi's	Helen Johnson
Aths	Charlotte Robinson

Volleyball

The volleyball season was under way and had not been completed when the year book went to press. The tennis and badminton tournaments were played in the late spring and the participation of all individual sports was started.

Soccer

Archery

Hockey



Health Week

The importance of good health was stressed during the annual health week, February 27 to March 2. Twenty-four good posture tags were awarded in Monday chapel to Glennys Corderman, Ruth Kingsbury, Ruth Olsen, Alice Hanson, Betty Lou Sanderson, Ralph Brown, Velma Swanson, Garry Wallman, LaVonne Wertz, Dewey Halford, Earl Hicks, Lawrence Johnson, Betty Lou Welding, Connie Gall, Helen Osbey, Lester Olson, Harriet Swanson, Gary Fischer, Orlan Ott, Morgan Harrison, Dorothy Carrigg.

Dr. Elizabeth Mochrie gave a very interesting talk on "Health" on the Tuesday of health week at the Morningside Christian Association.

The King and Queen of Health were presented to the students at the all-college dance held on the Saturday of Health Week. The 4-H requirements were the basis upon which the health winners were chosen. The King and Queen were Lester Menke and Ruth Olsen; the attendants were Nancy Lowry, David Denny, Ella Jean Waddell, and John Kolp.

On Friday night there was held a volley ball game between the "Brains" and the "Brawn," a wrestling match with Albert Haenfler and Forrest Simons as contestants, and a basketball game between the Kappa Zeta Chi sorority and Ishkoodah. The volleyball game was won by the "Brawn," and the Kappa Zeta Chi sorority won the basketball game.

Lowry, Waddell, Olsen

Menke, Kolp, Denny



Weed

Sweater Winners

The highest award that W. A. A. confers upon a girl is the presentation of a sweater award. Many requirements are necessary for this award, and it is a symbol of good sportsmanship, scholarship and leadership. The sweaters were given to Joyce Weed, Mary Stankiewicz and Alberta Seavey.

Cheer Leaders

Yeah Morningside—M-O-R-N-I-N-G-S-I-D-E-! Costumed in the traditional Maroon and White, Maynard Porter, Kathryn Brown, Ted Walensky, and Winifred Cheely led the Pep Club for the past year. To these four should go the appreciation of the entire student body, for the faithful service and energetic efforts to increase the spirit of Morningside's teams.

Top: Porter, Walensky.
Bottom: Cheely, Brown.



Sioux Scalpers

OFFICERS

ChiefPackard Wolle
 Medicine Man.....Garry Wallman
 Wampum Taker.....Nancy Kingsbury
 Executive Council.....Ruth Kingsbury



"Kid Party"

The Sioux Scalpers was organized as one of the first acts of the new student council. Its purpose was to create and maintain a higher standard of school spirit. Charter members were chosen from the peppiest of the four classes, and the club began activities.

Stringent rules were enforced about absences, and the executive committee replaced new members from a long waiting list. In the Friday chapel before the Wayne game, some more energetic scalpers journeyed to Wayne and captured the season's first scalp. After a mournful funeral for the deceased was held, the scalp and contents—four healthy cockroaches—were placed in the trophy case. Scalpers, under the direction of Winifred Cheely, proved themselves capable dramatists when they presented stunts before the football and basketball games. The Homecoming snake dance was led by scalpers, and Garry Wallman and Packard Wolle explained the significance of the club to the radio audience on two different occasions. Once, during the first semester, the organization held its skuffle. This was a "Kid Party" under the chairmanship of Garry Wallman and Millie Wikert, and here Scalpers played hop-scotch, drop-the-handkerchief, and ate hot dogs to their heart's content.

Sioux Scalpers is a permanent organization, and under the guidance of Professor Marshall. They look forward to many more successful fun-filled years in the future.

Sadie Hawkins Day

Sadie Hawkins Day was re-enacted by a worthy cast of Scalpers again under the guidance of Winifred Cheely, and some of the day's success can be attributed to the good work of the Sioux Scalpers. Winning costumes were worn by Glennys Corderman, Dorothy Gartner, Marlyn Pederson, and Edgar Graham.

Sadie Hawkins Day



Activities

Debate

I
→
4
◇

S
I
◇
V
X

Morningside College is fortunate in having at the head of its Forensic department a man as capable as Mendal B. Miller. Not only does Mr. Miller have the ability to produce fine debaters, but he is himself a fluent speaker displaying a keen sense of humor.

Mr. Miller is past president of the Iowa Forensic Association, and now holds the office of secretary.

I
→
4
◇

S
I
◇
V
X

Mendal B. Miller





Intercollegiate debate was unusually stimulating this year because of the timely question being discussed—"Resolved: That the United States should adopt a policy of strict economic and military isolation from all nations outside of the western hemisphere involved in international or civil conflict."

The annual pre-season non-decision debate tournament was held at Omaha University in November. During the following month debates were carried on with colleges and universities in the surrounding territory.



Fred Davenport, Robert Hamel, Ted Whicher, and Robert Rae represented the college at the St. Thomas tournament in St. Paul. The State Forensics meeting was held in Cedar Rapids the second week in March. The boys' team consisting of Fred Davenport and Robert Hamel received a superior rating. Geraldine Booth and Shirley Smith were awarded an excellent rating. Miss Booth received the distinction of superior rating on her individual debating ability. The same two teams again represented Morningside at the Pi Kappa Delta national convention in Knoxville, Tennessee, the third week in March. Mr. Davenport and Mr. Hamel were awarded the rating of excellent.



Booth



Walter



Hamel



Individual Schedules

ROBERT HAMEL

Omaha Tournament
 St. Thomas Tournament
 South Dakota University
 Orange City Junior College
 Wayne Teachers College
 Iowa State Forensics Meet
 Pi Kappa Delta Tournament

FRED DAVENPORT

St. Thomas Tournament
 Iowa State Forensics Meet
 Pi Kappa Delta Tournament

ROBERT RAE

St. Thomas Tournament

BYRON WALTER

Omaha Tournament

GERALDINE BOOTH

Omaha Tournament
 South Dakota University
 Orange City Junior College
 Wayne Teachers College
 Iowa State Forensics Meet
 Pi Kappa Delta Tournament

SHIRLEY SMITH

Omaha Tournament
 South Dakota University
 Orange City Junior College
 Wayne Teachers College
 Iowa State Forensics Meet
 Pi Kappa Delta Tournament

TED WHICHER

St. Thomas Tournament
 South Dakota University
 Orange City Junior College
 Wayne Teachers College

Pi Kappa Delta

Students achieving certain honors in debate, oratory, or extemporaneous speaking and maintaining a high scholastic standing are eligible for membership in Morningside's Iowa Delta chapter of Pi Kappa Delta. This is a national honorary forensic fraternity. During the year the group has both study and social meetings.

Geraldine Booth, Shirley Smith, Fred Davenport, and Robert Hamel, accompanied by Mendal B. Miller, were the Morningside representatives at the national Pi Kappa Delta meeting in Knoxville, Tennessee, during March. At this tournament the boys' team was awarded an excellent rating.

OFFICERS FOR DELTA CHAPTER

PresidentRuth Olsen
 Vice-PresidentDale Harter
 Secretary-TreasurerGeraldine Booth



Music

Through the efforts of Professor Paul MacCollin, the Conservatory of Music has come to be known as one of the finest in the Middle West. The success of the Morningside College Methodist Choir is due to his ceaseless activity and perseverance. "Mr. Mac" has been named by leading music critics of the United States a genius of conducting and a marvel in his ability to train a group of singers in so accurate and precise a musical manner.



Paul MacCollin

Mu Phi Epsilon



Fritzsche, Albert, Woodford, Santee, Ling, Nelson, Barrett, Lowry, Brooke, Johnson.

OFFICERS

President	Lucille Fritzsche
Vice-President.....	Martha Helen Nelson
Recording Secretary.....	Betty Ling
Corresponding Secretary.....	Edythe Mae Albert
Alumnae Secretary.....	Lucille Johnson
Treasurer.....	Esther Mary Santee
Historian	Dorothy Brooke
Warden.....	Mary Louise Barrett
Chaplain	Faith Woodford

On the ninth day of November, 1939, Phi Zeta Chapter of Mu Phi Epsilon, the National Music Honor Sorority, celebrated its tenth year as a stimulating influence for musical excellence.

This society is composed of junior and senior girls and faculty women of the Conservatory who have achieved superior scholastic and music attainments.

A business delegate will represent Phi Zeta Chapter at the National Convention which will be held in Cincinnati, Ohio, during the summer of 1940.

M. C. A. Trio

This string ensemble takes part in the M. C. A. broadcast every Sunday morning, besides furnishing music for other numerous occasions. The M. C. A. trio is composed of Edith Jensen, piano; Homer Garretson, violin; and Robert Feick, cello.

Jensen, Feick, Garretson.



Sloan, Emme, Rozeboom, Iseminger.

Male Quartet

The male quartet is composed of Grayson Sloan, Gene Emme, Bill Rozeboom, and George Iseminger. The quartet is often in demand for programs in the city, and was a feature number for informal concerts on the chapel choir tour.

Madrigal Singers

The Madrigal Singers is an organization active during the holiday season. The group has provided music for chapel programs and various organizations in the city. Included in the membership are: Alice Scott, Lucille Fritzsche, Ruth Harris, Genevieve Whittington, Edith Jensen, Gene Emme, Thomas Moon, George Iseminger, and Bill Roseboom.

Brass Quartet

One of the small ensembles in the Conservatory is the Brass Quartet, composed of Oliver Mogck, Jack Suffield, Grayson Sloan, and Bob Brooks. It was featured on the band trip, and has appeared in Conservatory recitals.

Brooks, Sloan, Suffield, Mogck.



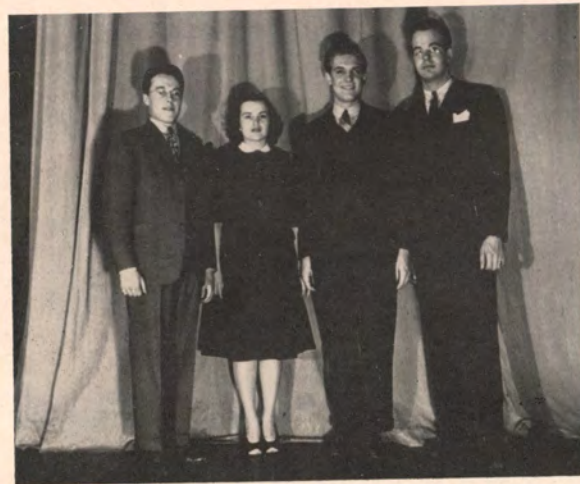
Student String Quartet

The Student String Quartet is composed of Martha Helen Nelson, Nancy Lowry, Marian Stickles, and Charlotte Williams. The quartet is in constant demand for performances in Sioux City and the surrounding territory. It is noted for superb rendition of classical compositions, both old and new.



Nelson, Lowry, Williams, Stickles.

"THREE HITS AND A MISS"



Gene Emme, Merrie June Heetland, Bill Rozeboom, George Iseminger.

Kucinski, Mossman, Kinney, Rudd.



Faculty String Quartet

The Faculty String Quartet is composed of Leo Kucinski, violin; Benita Mossman, violin; Arnold Rudd, viola; and Gordon Kinney, cello. Under the direction of Mr. Kucinski, the quartet has been highly praised and recognized in music groups of Sioux City and surrounding territory.

Sioux City Civic Concert Course

The series of six brilliant concerts offered to the patrons of the 1939-40 Sioux City Concert Course is undoubtedly one of the most outstanding groups of entertainment and cultural attractions Sioux City has ever had in one season.

Lily Pons
Marcel Hubert



Coolidge Quartet



Simon Barer
Vronsky and Babin
Robert Nicholson



Band



The Morningside College Band is under the direction of Everett Timm, one of the finest flutists in the United States. Besides being a concert organization, it is a medium for promotion of pep at football and basketball games of which Morningside can be justly proud.

PERSONNEL

Bob Lowry
Edith Jensen
Lawrence Johnson
Brown Garlock
Marion Benton
Gene Dauffenbach
Bob Hicks
Elna Van Camp
Evelyn Capener
Jean White
Lucille Johnson
Leonard Leeds
Norman Uehle
Thomas Thompson
Jeanne Anderson
Leona Witzenburg
Jean Jones, *Drum Major*

Ardis Hall
Eugene Orner
Oscar Towler
Charles Meachem,
Equipment Manager
Francis Kingsbury
Kenneth Klass
Clarice Rohweder
Vera Smith, *Drum Major*
Grayson Sloan,
Assistant Conductor
Louise Madison
Philip Baker
Harry Werder
Jimmy Adams
Mildred Pfeiffer
Devon Hahn, *Librarian*

Oliver Mogck
Jack Suffield, *Hall Manager*
Dean Brox,
Personnel Manager
Genevieve Whittington,
Executive Secretary
Wallace Peterson
Bill Powers
Bob Brooks
Donald Olson
Ross Harris
Odell Woods, *Drum Major*
Lauretta King
John Sipma
Walter Brink
Bob Green
Albert Haenfler

Jones, Woods, Smith
Davidson



Drum Majors

Morningside's four drum majors, Odell Woods, Jean Jones, Vera Smith, and Janice Davidson, led the band in all parades and field maneuvers.



Sioux City Symphony Orchestra

The Sioux City Symphony is sponsored by the Sioux City Civic Music Association, under the direction of Leo Kucinski, head of the violin department in the Conservatory. It is through his constant efforts and sparkling brilliancy of conducting that the Symphony has come to be well-recognized throughout the Northwest.

Messiah Soloists

Four of Morningside's students had the honor of being chosen as soloists in the 1939 presentation of Handel's *Messiah*. Miss Alice Scott was chosen soprano soloist with Miss Lucille Fritzsche alternate. Mr. Thomas Moon was chosen alternate for the tenor soloist, and Oliver Mogck was chosen bass soloist.

Alice Scott



Oliver Mogck



1
4
◇
S
I
◇
V
X

Choir



Sopranos

Glennys Corderman
Miriam Cox
Dorothy Long
Harriette Swanson
Opal Walker
Mildred Johnson
Alice Scott
Merrie June Heetland
Margaret Gusteson
Helen Johnson
Lucille Fritzsche
Dolorys Cook
Jean Jones
Martha Helen Nelson
Edith Jensen
Betty Bootjer
Marjorie Nelson

Tenors

Bill Power
Thomas Moon
James Bolton
George Greene
Lawrence Johnson
Odell Woods
Le Moine Van Houten
Jack Suffield
Eugene Emme
Le Roy Kuhlman
Robert Caine

Altos

Clarice Rohweder
Maxine Ericksen
Ruth Rance
Evelyn Capener
Genevieve Whittington
Marjorie Swisher
Geraldine Booth
Ardis Hall
Kathlyn Kolp
Edythe Albert
Ruth Smith
Doreen Dallam
Irene Schaal
Ruth Harris

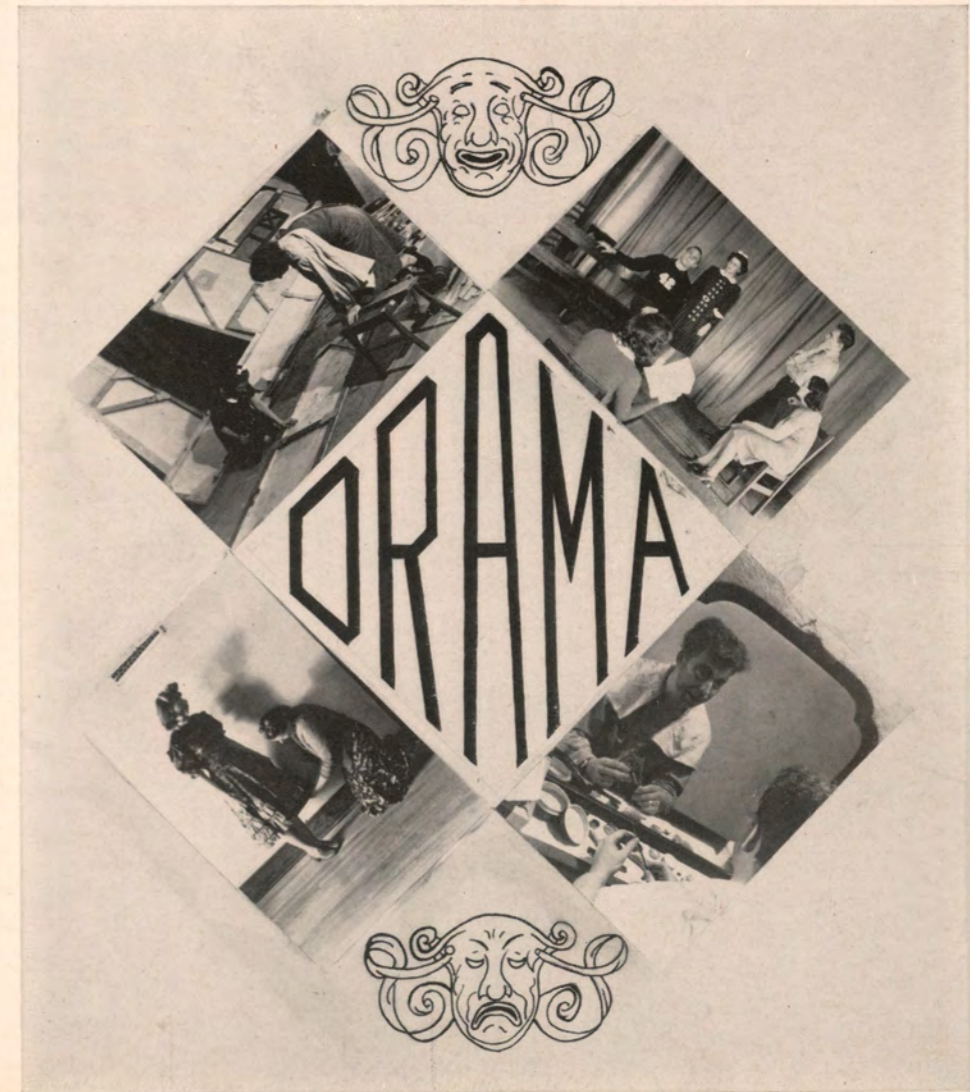
Basses

Donald Fritzsche
George Iseminger
Oliver Mogck
Keith Arnold
Bill Rozeboom
Ted Coomer
John Sipma
Richard Brenneman
Ross Harris
John Kolp

The Morningside College Methodist Choir has built up a high type of sacred a capella singing, and has been recognized by well-known critics and musicians to be one of the finest organizations of its type.

1
4
◇
S
I
◇
V
X

Dramatics



The Speech Department of Morningside College was most fortunate in securing Mr. John Felton, Jr., as the head this year. Mr. Felton came to Morningside from the University of Iowa where he was an assistant in the Department of Dramatic Art. He received his B. A. degree from the University of Iowa.

His able direction of all of the plays and programs of the year has been well acknowledged. Mr. Felton has been assisted in the presentation of the plays of the year by Mrs. Felton who is also a major in dramatics.



John Felton

Our Town

CAST

Stage Manager.....Lawrence Johnson	Woman in the Balcony.....Irene Schaal
Dr. Gibbs.....Dale Harter	Man in the Auditorium.....Maurice Scheider
Joe Crowell.....Jim Wallen	Lady in the Box.....Betty Hoefler
Howie Newsome.....Robert Moore	Simon Stimson.....Bartlett Lubbers
Mrs. Gibbs.....Dorothy Ann Olson	Mrs. Soames.....Mary McBride
Mrs. Webb.....Charlotte Robinson	Constable Warren.....Donald Wertz
George Gibbs.....Richard Brenneman	Si Crowell.....Edgar Graham
Rebecca Gibbs.....Maxine Pooley	Baseball Player.....Robert Craven
Wally Webb.....Robert Frakes	Sam Craig.....Clifford Spayde
Emily Webb.....Margaret Long	Joe Stoddard.....Gerald McCoy
Professor Williard.....Lester Menke	Assistant Stage Managers—Edward Hendricks, Edgar Graham.
Mr. Webb.....Robert Caine	

People of the Town—Dorothy Long, George Green, Scharmel Sturtevant, Irvine Thoe, Irene Johnson, Robert Craven, Betty Hoefler, Betty Lou Saunderson, Maurice Scheider, Irene Schaal, Betty Bootjer, Philip Sandberg, Nancy Kingsbury, Kathlyn Kolp, Edward Hendricks.

“Our Town,” by Thornton Wilder, gave a picture of what transpired in a small New England town between the years 1901 to 1914. It was a simple story, beautifully told of the growing up, marrying, living, and dying of the people in that community. The play itself was a theatrical experiment in which a stage manager as an actor, philosopher, and commentator, set the scenes so that the bare stage became the proper background for the action of the play.

This 1938 Pulitzer Prize winning play was presented on November 10, in the East High Auditorium, to a very appreciative audience.



Love In Livery

CAST

Silvia	Maxine Pooley	Mario	Maurice Scheider
Lisette	Kathlyn Kolp	Dorante	Clifford Spayde
M. Orgon.....	Lester Menke	Pasquin	Gene Kennedy
	Valet		Lawrence Johnson

The second play of the season, "Love in Livery," was presented in the Morningside College Auditorium on February 21 and 22 at 8:00 P. M.

"Love in Livery" by Pierre Marivaux is a Franch comedy, originally produced in Paris in 1736. It is a drawing room comedy, set in the home of M. Orgon in Paris during the summer of 1730. Orgon has promised his daughter, Silvia, to be married to Dorante, the son of an old friend of his. Neither Silvia nor Dorante are acquainted, so both disguise themselves as their servants in order to observe each other before their engagement. The play concerns itself with the meeting of Silvia and Dorante and their falling in love. The real maid and valet also fall in love and the play ends happily with Silvia's advice to the lovelorn.

The play is filled with amusing situations. The 18th century costumes and furniture were very different and furnished an unusual setting for the play.

Riders To The Sea

CAST

Nora	Lucille Gehrt	Maurya	Mary McBride
Kathleen	Mary Cruikshank	Bartley	Lawrence Johnson

"Riders to the Sea," a haunting Irish tragedy, is a one-act play written by John Millington Synge. The scene is in the kitchen of a fisherman's cottage on an island off of the west coast of Ireland. Maurya, who has already given a husband and five sons to the sea, now loses Bartley and "is left with no son living." The utter dejection and relief of the mother are shown by—"They're all gone now, and there isn't anything more the sea can do to me—." No more does she have to wonder what way the wind is blowing or what "way the sea is—"

This play was presented in a student chapel program on Wednesday, May 1, and was under the direction of Dorothy Ann Olson.

Commencement Play

At the time of going to press, the play in rehearsal to be given at Commencement was "The Royal Family," by Edna Ferber and George Kaufman.

This 1927 "Best Play" was supposedly a caricature of the dramatically great Barrymore and Drew families. The authors claim, however, that this similarity was only coincidental. The play concerns a family of three generations of actors who eventually learn that family ties are more important than the glamour of the stage.

This play was to be given on May 31 in the Morningside College Auditorium.



Radio Group

The Speech Department in cooperation with the Conservatory of Music, has presented a monthly program over radio station WNAX from their Sioux City studio. This presentation has been a part of the College Hour which five colleges in this territory have brought to the radio audience. The programs consisted of both original plays and cuttings of popular plays.

The students who have participated in these presentations are: Alice Scott, Mary Louise Barrett, Betty Bootjer, Lawrence Johnson, Dale Harter, Lester Menke, Margaret Long, Alice Hanson, Irene Schaal, Richard Brenneman, and Kathlyn Kolp.

All of the continuity and script-writing has been done by Irvine Thoe under the supervision of Mr. Felton.



Iseminger

Alpha Psi Omega

OFFICERS

PresidentGeorge Iseminger
 Vice-PresidentLester Menke
 Secretary-TreasurerMargaret Long

Alpha Gamma Cast of Alpha Psi Omega, National Honorary Dramatics fraternity, is an active participant in the dramatic and speech activities on the campus. Entrance into the organization may be obtained by presenting fifty points earned in acting and production work, with a minimum of fifteen points and a maximum of thirty-five points in either phase of the work. Monthly meetings are held under the direction of Mr. Felton, faculty sponsor for the fraternity.

Collegiate Players

The Morningside Collegiate Players Club has completed another successful year on the campus. The purpose of the club is to stimulate interest in drama through study, laboratory experience, and actual production. The organization meets every two weeks to discuss some phase of the theatre, to present some dramatic hit, or to have a social period and discussion.

Members of the group took an active part in casting and producing the year's productions, and sponsored a one-act play. Under the able guidance of the new director, Mr. Felton, it has presented an unusual and widely varied program.

OFFICERS

First Semester

PresidentMargaret Long
 Vice-President.....Dorothy Ann Olson
 Secretary-TreasurerGeraldine Booth

Second Semester

President.....Mary Eileen McBride
 Vice-PresidentAlice Hanson
 Secretary-TreasurerConstance Gall

Reese, Harter, Moore, Menke, Johnson
 Waddell, D. Long, Thorpe, Hill, Miller, Gall
 Pooley, Hanson, Bootjer, Booth, Hofer, Fowler, McBride
 D. Brown, Cheely, M. Long, Wikert, Kingsbury, Kolp, K. Brown



Psi Chi

OFFICERS

	<i>First Semester</i>	<i>Second Semester</i>
President.....	Lawrence Johnson	Lawrence Johnson
Vice-President.....	Inez Grove	Inez Grove
Secretary.....	Letha Howes	Celia Fordyce
Treasurer.....	Helen Broyles	Careta Younglove
Corresponding Secretary.....	Letha Howes	Letha Howes
Publicity.....		Frances Gasink

The Morningside College Chapter of Psi Chi, the National Honor Fraternity in Psychology, was chartered on June 5, 1939. Twelve hours of work in Psychology with an average grade of B are required for membership. The organization has for its purpose the stimulation of interest and research in Psychology. The outstanding event of the year is the presentation of Psychological Demonstration Night.

Members not in the picture are

Stanley Anderson Fred Davenport
 Nancy Arthur Edna Elving
 Ferdinand Bahr Catherine Rich

Alumni Members are:

George Hawn
 Euba Huntsley
 Dick Pawson
 Dr. Edward Sibley

Top: P. Johnson, Allen, Booth, Broyles, E. Emme,
 G. Emme, Fordyce, Gasink, Grove, Hakala,
 Harrison, Harter, Howes, Jacobson, L. Johnson.
 Bottom: Miller, Rolland, Sheley, Thoe, Thorngreen, Zechmann.



Organizations

1
4
4
◇
5
1
◇
V
X

Student Council

The Student Council is composed of the following: the president, vice-president, and secretary-treasurer of the student body; the president of each class—Arthur Lundblad, Dean Forbes, John Kolp, and Bob Hicks; one representative from each class—Janet Coe, Ruth Olsen, Geraldine Booth, Ruth Cowling; one representative from the Women's Self-Governing Association—Kathlyn Kolp; one representative from the Conservatory—Arnold Rudd; one representative from Pi Kappa Delta—Robert Hamel; the editor of the Collegian Reporter—Fred Davenport; the presidents of M. C. A.—Dale Harter, "M" Club—Robert Hakala, and W. A. A.—Dorothy Ann Olson.

The Student Council has successfully sponsored the following events: Freshman-Sophomore Day, Homecoming activities including the barbecue, crowning of Miss Morningside, parade, football game and dance, a series of dances after basketball games, Sadie Hawkins Day dance, Hi-Ya Day and dance, Walk-out Day and dance, and an all college formal each semester.

They have also sponsored a campaign on political education which included outside speakers for the major political parties and culminated in party conventions and a mock election.

A campaign for beautifying the campus was also successfully carried out. Many beautiful trees have been planted which will long be a source of beauty. As a parting gift, the Council has given the school a bulletin board to be used for announcements of interest to the student body.

Under these capable student executives, another successful year of activities of general student interest has been completed.

OFFICERS

PresidentMorgan Harrison
 Vice-PresidentAlfred Strozdas
 Secretary-TreasurerHelen Osbey





Top: Anderson, Bergquist, Booth, Bootjer, Brooke.
Brown, Carrigg, Clayton, DeMond, Greene.
Middle: Grove, Gusteson, Harrison, Jensen, H. Johnson.
I. Johnson, King, Larson, Preston, Rance, Rohweder.
Bottom: Schunck, Sorenson, Swanson, Thomas, Verstegen, Zechmann.



*Happily, Bravely,
Faithfully*

Kappa Pi Alpha

OFFICERS

	<i>First Semester</i>	<i>Second Semester</i>
President.....	Betty Greene	Margaret Gusteson
Vice-President.....	Millicent Jensen	Marian Preston
Recording Secretary.....	Lorraine Verstegen	Irene Johnson
Corresponding Secretary.....	Verona De Mond	Millicent Jensen
Treasurer.....	Anna Marie Larson	Betty Schunck
Chaplain.....	Ruth Rance	Inez Grove
Critic.....	Helen Jensen	Helen Johnson
Sergeant-at-Arms.....	Inez Grove	Alice Swanson
Librarian.....	Marian Preston	Shirleymae Zechman
Hall Chairman.....	Betty Schunck	Dorothy Carrigg
Social Chairman.....	Nancy Arthur	Lorraine Verstegen
Reporter.....	Dorothy Carrigg	Alice Clayton

Faculty Adviser: Marcia McNee

MEMBERS

Seniors

Jeanne Anderson
Dorothy Brooke
Verona De Mond
Betty Greene
Inez Grove
Margaret Gusteson
Alta Claire Harrison
Millicent Jensen
Irene Johnson

Ann Marie Larson
Marian Preston
Lorraine Verstegen

Juniors

Doris Brown
Dorothy Carrigg
Ruth Rance
Betty Schunck
Alice Swanson

Sophomores

Marie Bergquist
Geraldine Booth
Betty Bootjer
Alice Clayton
Helen Johnson
Lauretta King
Clarice Rohweder
Dorothy Jean Sorenson
Geraldine Thomas
Shirleymae Zechmann





To Be, Rather than
to Seem

Kappa Zeta Chi

OFFICERS

	<i>First Semester</i>	<i>Second Semester</i>
President.....	Dorothy Ann Olson	Alice Hanson
Vice-President.....	Margaret Long	Constance Gall
Recording Secretary.....	Joyce Weed	Mildred Wikert
Corresponding Secretary.....	Lucille Pippett	Marjorie Nelson
Treasurer.....	Jean Fowler	Jean Fowler
First Critic.....	Kathlyn Kolp	Dorothy Ann Olson
Second Critic.....	Constance Gall	Margaret Long
Chaplain.....	Irvine Thoe	Nancy Lowry
Directresses.....	Mildred Wikert Joyce Held	Louise Cairy Barbara Barry
Librarian.....	Winifred Cheely	Betty Lou Saunderson
Ushers.....	Nancy Kingsbury Norma Neilson	Marian Miller Ruth Kingsbury

Faculty Adviser: Miss Jeanne Scott

MEMBERS

Seniors

Jean Fowler
Constance Gall
Alice Hanson
Kathlyn Kolp
Margaret Long
Nancy Lowry
Deon Moor
Dorothy Ann Olson
Irvine Thoe
Joyce Weed

Juniors

Edythe Albert
Mary Louise Barrett
Winifred Cheely
Glennys Corderman
Doreen Dallam
Maxine Erickson
Joyce Held
Dureth Helen Hitchcock
Marjorie Nelson
Norma Neilson
Lucille Pippett
Shirley Wallen
Mildred Wikert

Sophomores

Barbara Barry
Kathryn Brown
Louise Cairy
Janice Collier
Maxine Foster
Merrie June Heetland
Betty Hoefer
Nancy Kingsbury
Ruth Kingsbury
Marian Miller
Maxine Pooley
Betty Lou Saunderson
Marian Stickles
Ellajean Waddell
Helen Weaver
Va Vonne Wertz
Lauree Wood



Top: Albert, Barrett, Barry, Brown, Cairy, Cheely
Corderman, Dallam, Ericksen, Foster, Fowler, Gall
Hanson, Heetland, Held, Hitchcock, Hoefer, Kingsbury
Kolp, Long, Lowry, Miller, Moor, Nelson
Nielson, Olson, Pippett, Pooley, Saunderson, Stickles, Thoe
Bottom: Waddell, Wallen, Weaver, Wertz, Weed, Wikert, Wood





The Useful and the Pleasing

Alpha Sigma

OFFICERS

	<i>First Semester</i>	<i>Second Semester</i>
President.....	Genevieve Whittington	Janet Coe
Vice-President.....	Nelly De Vries	Genevieve Whittington
Recording Secretary.....	Charlotte Robinson	Frances Forsberg
Corresponding Secretary.....	Janet Coe	Nelly De Vries
Treasurer.....	Ella Lauritson	Ella Lauritson
Directress.....	Frances Forsberg	Frances Forsberg
Reporter.....	Frances Forsberg	Helen Broyles
Chaplain.....	Ruth Smith	Ruth Smith
Pianist.....	Dolorys Cook	Dorothy Luchsinger
Usher.....	Nelly De Vries	Genevieve Whittington
Historian.....	Janet Coe	Ferne Rolland

Faculty Adviser: Miss Ethel Murray

MEMBERS

Seniors

Janet Coe
 Dolorys Cook
 Nelly De Vries
 Ella Lauritson
 Ruth Smith
 Genevieve Whittington

Juniors

Frances Forsberg
 Mary Eileen McBride
 Charlotte Robinson

Sophomores

Helen Broyles
 Marjorie Carlson
 Jean Jones
 Dorothy Luchsinger
 Kathryn Madison
 Adele Roberts
 Ferne Rolland
 Marjorie Salsbury
 Kathleen Schatz
 Betty Lou Welding



Top: Broyles, Carlson, Coe, Cook,
 DeVries, Forsberg, Jones, Lauritson,
 McBride, Madison, Roberts, Robinson, Rolland.
 Bottom: Salsbury, Schatz, Smith, Welding, Whittington.

1
4
4
5
1
4
V
X

Alpha Sigma

OFFICERS

	<i>First Semester</i>	<i>Second Semester</i>
President.....	Genevieve Whittington	Janet Coe
Vice-President.....	Nelly De Vries	Genevieve Whittington
Recording Secretary.....	Charlotte Robinson	Frances Forsberg
Corresponding Secretary.....	Janet Coe	Nelly De Vries
Treasurer.....	Ella Lauritson	Ella Lauritson
Directress.....	Frances Forsberg	Frances Forsberg
Reporter.....	Frances Forsberg	Helen Broyles
Chaplain.....	Ruth Smith	Ruth Smith
Pianist.....	Dolorys Cook	Dorothy Luchsinger
Usher.....	Nelly De Vries	Genevieve Whittington
Historian.....	Janet Coe	Ferne Rolland

Faculty Adviser: Miss Ethel Murray

MEMBERS

Seniors

Janet Coe
 Dolorys Cook
 Nelly De Vries
 Ella Lauritson
 Ruth Smith
 Genevieve Whittington

Juniors

Frances Forsberg
 Mary Eileen McBride
 Charlotte Robinson

Sophomores

Helen Broyles
 Marjorie Carlson
 Jean Jones
 Dorothy Luchsinger
 Kathryn Madison
 Adele Roberts
 Ferne Rolland
 Marjorie Salsbury
 Kathleen Schatz
 Betty Lou Welding



1
4
4
5
1
4
V
X



Top: Burrow, Dannenberg, Feikema, Lease.
 Middle: Lundblad, Macur, Michaelson, Smith.
 Bottom: Stone, Thompson, Vander Berg, Widler.

Phi Sigma



We Retrace No Footsteps

OFFICERS

	<i>First Semester</i>	<i>Second Semester</i>	<i>Third Semester</i>
President.....	Don Widler	Bernard Feikema	Don Michaelson
Vice-President.....	Charles Clayton	Charles Sheridan	Charles Sheridan
Secretary.....	Bob Dannenberg	Glenn Thompson	Elwood Hetland
Treasurer.....	Don Michaelson	Don Michaelson	Glenn Thompson
Pledge Master.....	Glen Burrow	Glen Burrow	Glen Burrow
Chaplain.....	Arthur Lundblad	Joe Lease	Joe Lease

MEMBERS

Seniors

- Glen Burrow
- Elwood Hetland
- Arthur Lundblad
- Don Michaelson
- Leo Smith
- Clifford Spayde

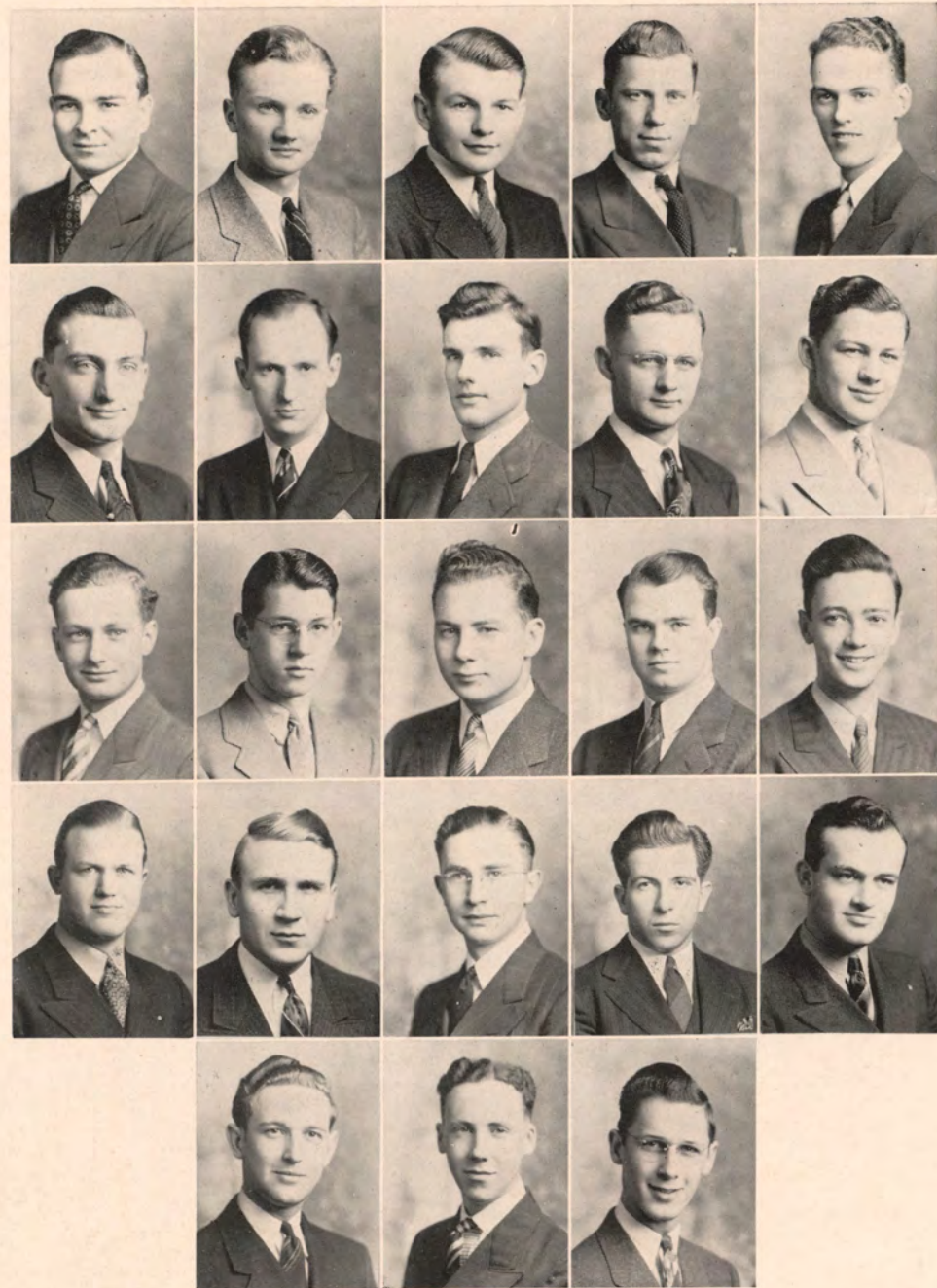
Sophomores

- Robert Dannenberg
- Bernard Feikema
- Albert Haenfler
- Joe Lease
- Ted Macur
- Michael Reilly
- Charles Sheridan
- Glenn Thompson
- Don Widler
- Robert Worrell

Freshmen

- Richard Brenneman
- Joe DeMaine
- John Jensen
- Russell Logue
- Robert Mohr
- Merle Stone
- James Vander Berg





Top: Bennett, Bolton, Brown, Cobbs, Corwin,
 Goodenow, Gusteson, Hempstead, E. Hicks, R. Hicks,
 Hughes, Kingsbury, Kolp, Leopold, Mahood,
 Maynard, Menke, Rehder, Thrower, Van De Mark,
 Wallman, Wellmerling, Woods.

Alpha Tau Delta



*Smoothness in Manner,
 Strength in All Things.*

OFFICERS

	<i>First Semester</i>	<i>Second Semester</i>
President.....	Lester Menke	Garret Wallman
Vice-President.....	Garrett Wallman	Ralph Brown
Secretary.....	Ray Gusteson	Ray Gusteson
Treasurer.....	John Kolp	John Kolp
Sergeant-at-Arms.....	John Maynard	Eugene Kennedy
Pledgemaster.....	Eugene Kennedy	Lewis Mahood
Social Chairman.....	Ralph Brown	Don Leopold
Chaplain.....	Richard Woods	Richard Woods

Faculty Adviser: Cecil E. Marshall

MEMBERS

Seniors

Lester Menke
 John Thrower
 Bruce Van De Mark

Juniors

Ralph Brown
 Lewis Mahood
 Garrett Wallman

Sophomores

James Bolton
 Gerald Cobbs
 Earl Goodenow
 Raymond Gusteson
 Robert Hempstead
 Earl Hicks
 Eugene Kennedy
 John Kolp
 Donovan Leopold
 John Maynard
 Harold Wellmerling
 Richard Woods

Freshmen

James Adams
 Samuel Back
 Robert Bennett
 Richard Corwin
 Robert Hicks
 Raymond Hughes
 Robert Jarvise
 Francis Kingsbury
 Guy Nettleton
 Leonard Rehder

Pledges

James Dunn
 Francis Jones
 Warren Jurgensen





Sigma Theta Rho

OFFICERS

	<i>First Semester</i>	<i>Second Semester</i>
President.....	Walter Hurd	Lester Olson
Vice-President.....	Dayrle Crabb	Dean Forbes
Secretary.....	Donnin Ames	Melvin McKnight
Treasurer.....	Francis Ames	Francis Ames
Pledgemaster.....	Dean Forbes	Donnin Ames
Sergeant-at-Arms.....	Jack Holdcroft	Takeo Nagamori
Chaplain.....	Howard Nielsen	Philip Sandberg
Boarding Club Manager.....	Dayrle Crabb	Dayrle Crabb
House Manager.....	Donnin Ames	Donnin Ames

Top: Ames, Crabb, Gibson, Hahn.
 Middle: Holdcroft, Hurd, Kenny, McKnight.
 Bottom: Nagamori, Nielsen, Olson.

MEMBERS

Seniors

Devon Hahn
 Walter Hurd
 Howard Nielsen
 Lester Olson
 Robert Ruleman

Juniors

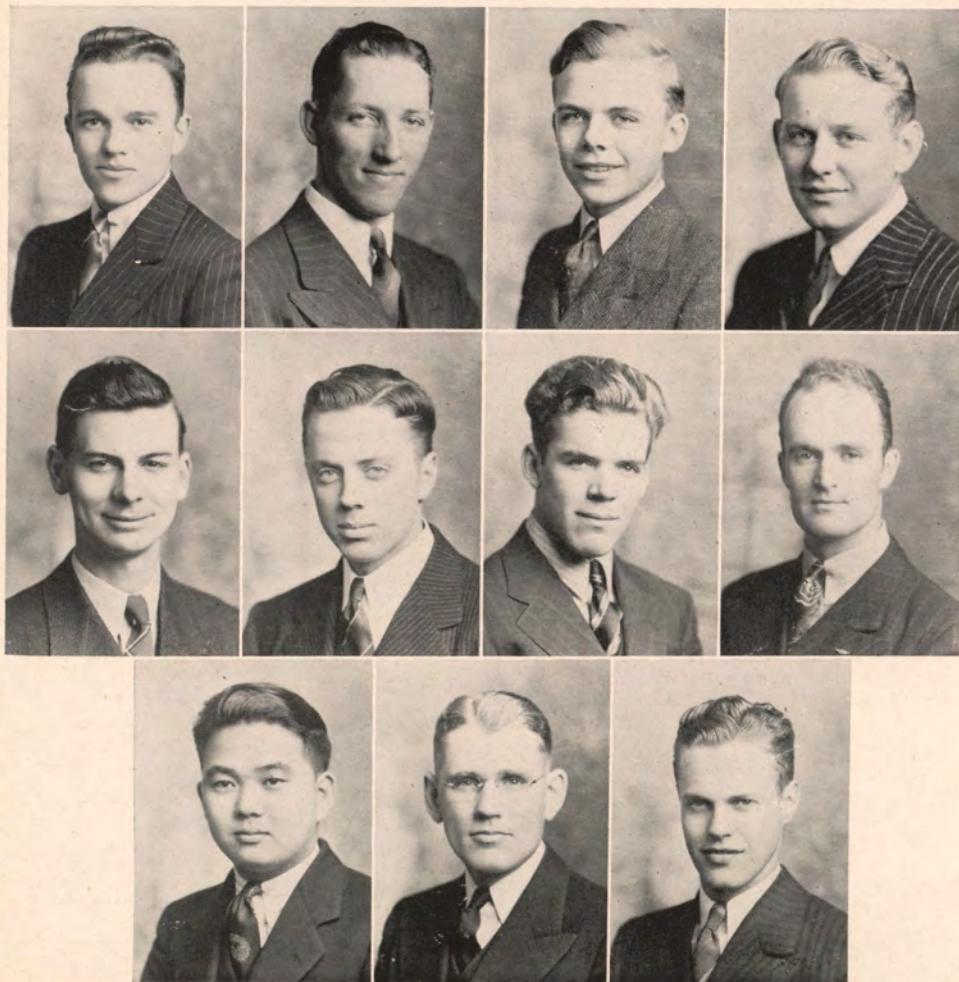
Arnold Anderson
 Donnin Ames
 Francis Ames
 Dean Forbes
 Myles Gates
 Melvin McKnight
 Takeo Nagamori

Sophomores

Marion Benton
 Dayrle Crabb
 Odell Woods
 Jack Holdcroft
 John Bane

Freshmen

David Gibson
 Thomas Kenny
 Charles Meacham
 Lowell Ralston
 Philip Sandberg
 William Stoddard
 William Anderson
 William Murray
 Robert Moore
 Edwin Osborn
 Robert Thompson



Inter-Sorority Council

Members of the inter-sorority council consist of the president and two appointed by her to represent each sorority. A secretary is chosen to serve for the year, each sorority having one of its representatives act in this position every third year. The council functions, with the advice and guidance of Miss Lillian Dimmitt, dean of women, only when cooperative measures are necessary.

First Semester

KAPPA ZETA CHI

Alice Hanson
 Glennys Corderman
 Dorothy Ann Olson

KAPPA PI ALPHA

Margaret Gusteson
 Betty Greene
 Betty Schunck

ALPHA SIGMA

Nelly De Vries
 Frances Forsberg
 Genevieve Whittington

Second Semester

KAPPA ZETA CHI

Alice Hanson
 Glennys Corderman
 Dorothy Ann Olson

KAPPA PI ALPHA

Margaret Gusteson
 Betty Greene
 Betty Schunck

ALPHA SIGMA

Frances Forsberg
 Janet Coe
 Genevieve Whittington

Inter-Fraternity Council

With Dr. M. E. Graber, Dean of Men, as faculty adviser, the inter-fraternity council has charge of pledging activities and solving problems of the fraternities. In the past years, it has served chiefly in an advisory capacity. Members include two from each fraternity, with a president and secretary elected within the group by the members.

OFFICERS

PresidentRobert Ruleman
 SecretaryGarrett Wallman

REPRESENTATIVES

ALPHA TAU DELTA

Garrett Wallman
 Lester Menke

SIGMA THETA RHO

Robert Ruleman
 Howard Nielsen

PHI SIGMA

Bernard Feikma
 Joe Lease

Ishkoodah

Ishkoodah is an organization to which all freshman girls may belong. The name, which means shooting star, signifies that the membership of Ishkoodah changes every year.

Ishkoodah participates in such school activities as furnishing a float for the homecoming parade, taking part in the annual Agora carnival, and having charge of a chapel program. Ishkoodah sponsors two formal dances during the year which are the main social functions of the society.

The bi-monthly meetings held in the Student Union Room are for the purpose of developing friendship among the freshman girls.

OFFICERS

First Semester

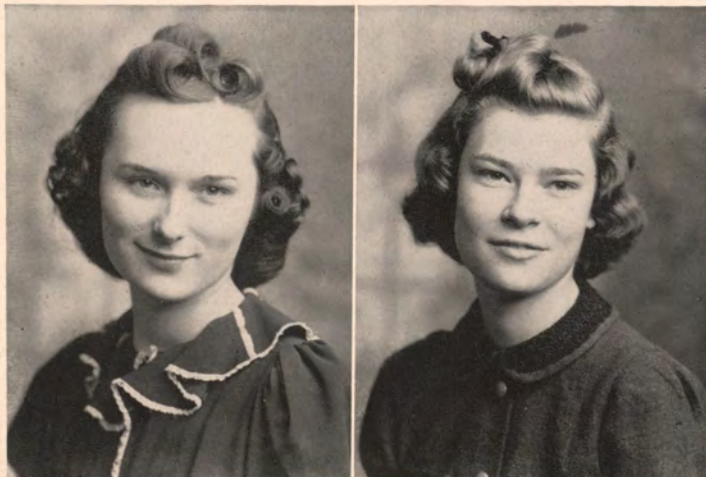
President Lucile Roberts
 Vice-President Doris Coe
 Secretary-Treasurer Dorothy Brown
 Program Chairman Zola Marcussen
 Sergeant-at-Arms Dorothy Long

Second Semester

President Florence Coss
 Vice-President Jane Garretson
 Secretary-Treasurer Dorothy Long
 Program Chairman Gwendolyn Downey
 Sergeant-at-Arms Jean White

Lucile Roberts

Florence Coss



McClaran

Zeta Sigma

OFFICERS

President Mrs. L. C. McClaran
 Vice-President Mr. Odes Hilton
 Secretary Miss Ruth Wedgewood
 Treasurer Mr. Homer Schaper

Zeta Sigma is a local honor society primarily for the purpose of promoting scholarship and leadership on the campus. Students must have an average of at least three and one-third honor points, and are elected into the society in the spring of their graduation.

The Frederick W. Schneider Loan Fund has been established by Zeta Sigma to be awarded to students of high scholarship, good character, and leadership, who are interested in preparing for some form of humanitarian service.

Alumni Organization

The function of the alumni association is to initiate the graduates into their ranks each spring after graduation.

Alumni are encouraged to keep in contact with the organization, and many states are represented in its membership. The annual dinner of the group is held during Homecoming, and the new officers are then elected.

OFFICERS

President Richard Burrows
 Vice-President Don Pauley
 Secretary William Wolle
 Treasurer Ira J. Gwinn

Burrows



Pi Gamma Mu



Top: Thoe, Olson, Davenport, Kitterman, Grefe, Harter.
Middle: Murray, Howes, Younglove, Fordyce, McNee, Wirick, Jacobson, Johnson, Sheley, Clayton Hakala.
Bottom: Osbey, Preston, Miller, Fowler, Brown.

OFFICERS

President	Minetta Miller
Vice-President.....	B. Roy Brown
Secretary	Irvine Thoe
Treasurer	Marcia McNee
Faculty Sponsor.....	Dr. Earl Emme

National honorary social science fraternity. The requirement for eligibility is a grade average of B for thirty semester hours in a field, with fifteen hours from one department. The purpose of the fraternity is to encourage and reward the study of society and of social questions in the light of truth and by the scientific method.

Alpha Kappa Delta

Alpha Kappa Delta, Honorary Sociological Fraternity, was brought to Morningside College with nine charter members to promote scholarship, creative writing, and community service in the social field. Students who have a major interest in Sociology and whose collegiate work is of a high order are eligible to come into the fellowship of this society.

The fraternity is of national scope, having chapters in many of the large universities of America. Through Alpha Kappa Delta, welfare workers, researchers, and special students are brought into more sympathetic contact to discuss the manifold problems which our modern civilization has brought forth.

The Alpha chapter in Iowa belongs to Morningside College.

Faculty Sponsor: Horace Hawthorne.

Hawthorne



Top: Stevens, Crabb, Arnold, Lafoon, McDonald, Whitver, Dauffenbach.
Bottom: Salsbury, Gartner, Forsberg, Grove.

Biology Club

OFFICERS

President	Frances Forsberg
Vice-President	Keith Arnold
Secretary	Gordon Whitver
Treasurer	Marjorie Salsbury
Steward	Dorothy Gartner
Reporter	Dayrle Crabb
Adviser.....	Dr. T. C. Stephens

This club is maintained in the Biology Department for the purpose of stimulating interest in biological fields and to provide an opportunity for those interested in this department for social gatherings. The ultimate aim of the club is to promote Beta Beta Beta, honorary biological fraternity. The regular events of the club include periodical bird or field trips and bi-weekly luncheons followed by reports of biological interest.

Beta Beta Beta

Beta Beta Beta is a national honorary society for students of the biological sciences, established for the purpose of encouraging scholarly attainment in biology. It thus reserves its membership to those who achieve high academic records and who have a special interest in the subject. Its purpose is three fold: the stimulation of sound scholarship, the dissemination of scientific knowledge, and the promotion of biological research.

OFFICERS OF TAU CHAPTER

President	Keith Arnold
Vice-President	Gordon Whitver
Secretary	Gordon Whitver
Faculty Adviser.....	Dr. T. C. Stephens

Arnold



Eta Sigma Phi



Top: Brown, Caine, Grefe, Smith.
Middle: Dallam, Wikert, Van Camp, Begquist, Hitchcock.
Bottom: Osbey, Moor.

OFFICERS

PresidentHelen Osbey
Vice-PresidentDeon Moor
SecretaryShirley Smith
TreasurerBob Caine

Eta Sigma Phi is a national honorary Latin and Greek fraternity which has for its purpose the promotion of scholarship in the classical languages. Requirements for acceptance into the group are registration in twelve or more hours of Latin or Greek with an average of 3.2 honor points per semester hour or above. Monthly meetings are held.

Helen Osbey, president of the local chapter, has been national secretary during the past year. Mildred Wikert, Dureth Helen Hitchcock, Elna Van Camp, and Helen Osbey attended the national convention at Tulane University in New Orleans, from April 9-16.

Phi Sigma Iota

Phi Sigma Iota, national honorary romance languages fraternity, is primarily for students of junior standing or above in the romance languages. Meetings are held each month at which individual research papers are read by the members. The purpose is to stimulate research and promote interest between nations.

This year, the club elected Mr. Cecil Marshall an honorary member.

Top: Marshall, Lauritsen, DeVries, Schunck, Kanthlener.
Bottom: Gasink, DeMond, Sauderson.



OFFICERS

President.....Verona De Mond
Vice-PresidentFrances Gasink
Secretary-Treasurer.....Ella Lauritsen
Faculty Adviser....Mr. Henry Kanthlener

Sigma Tau Delta



Top: Warner, Mills, Johnson, Thoe, DeVries, Olson, Osbey.
Bottom: Gusteson, Huxtable, DeMond, Greene.

OFFICERS

PresidentPatricia Warner
Vice-President.....Nelly De Vries
Secretary-TreasurerIrvine Thoe
Adviser.....Miss Mirah Mills

Sigma Tau Delta, National Honorary English fraternity, is composed of English majors pledged "to endeavor to advance the study of the chief literary masterpieces, to encourage worthwhile reading, and to promote the mastery of written expression." The requirements for eligibility are a major in English and a grade of B in all courses in this field.

This past year, the organization was composed of twelve members. The programs were varied, being presented both by members and by outside speakers. A social hour usually followed the regular meeting. One of the traditions of the club is the annual May breakfast which concluded the activities of the year.

This year, Sigma Tau Delta was privileged to be in charge of the annual Honor Society banquet held during the last part of the second semester.

Cosmopolitan Club

Cosmopolitan Club meets once a month for a dinner and a program. The dinners are prepared by the club members, and are in the form that the particular nationality would serve. During the past year Chinese, Danish, Dutch, Indian, Canadian, and English dinners were planned. The programs are built around the nationality or the nation from which the dinner is supposed to originate.

The primary aim of the club is to create friendship among foreign students who have little immediate connection with other lands and who are interested in learning more about the customs and habits elsewhere. The club had a membership of thirty this year, including the following foreign students: Takeo Nagamori, Ayako Yamashiro, Betty Ling, Anne Holiday, Frances Walker, Dave Denny, and Toni Crow.

Denny



OFFICERS

PresidentDavid Denny
Vice-PresidentEric Liljestrang
SecretaryFrances Gasink
TreasurerBetty Ling
Adviser.....Dr. Paul Johnson

Morningside Christian Association



Harter

OFFICERS

President	Dale Harter
Vice-President	Doreen Dallam
Secretary	Shirley Smith
Treasurer	Robert Caine
Faculty Adviser.....	Dr. Paul E. Johnson

The Morningside Christian Association is an organization composed of three former groups—the Christian Service Club, Y. W. C. A., and the Y. M. C. A. They aim to further fellowship among students, and to help students formulate a philosophy of life and to strengthen their ideals.

Among the events which they sponsor are Freshman Week, the Gospel Team, Religious Emphasis Week, all-college parties, and the securing of outside speakers for chapel programs.

Their meetings are held once a week in the Student Union Room and are usually followed by a luncheon. During the past year, they have been a very active group on the campus and have a large number of members enrolled.

M. C. A. Radio Groups

Every Sunday morning at 9:45 over station KTRI, this group of young musical artists presented fifteen minutes of sacred and secular music under the sponsorship of the Christian Association of Morningside College. They presented thirty programs during the year. The string trio is composed of Edith Jensen, piano; Robert Feick, cello; Homer Garretson, violin. The mixed quartet consists of Alice Scott, soprano; Kathlyn Kolp, contralto; Gene Emme, tenor; and William Rozeboom, baritone. The program announcers were Bill Rozeboom and Dale Harter. The program was directed by Gene Emme.

Garretson, Jensen, Feick Rozeboom, Kolp, Scott, Emme



College League

OFFICERS

President	Doreen Dallam
Vice-President	Kathryn Madison
Secretary-Treasurer	Wilson Reynolds
Social Chairman.....	Philip Sandberg
Song Leader.....	Irene Schaal
Pianist	Dorothy Luchsinger
Adviser.....	Dr. Paul E. Johnson

College League meets every Sunday evening at Grace M. E. Church. The purpose of the group is to offer to every college student an opportunity for religious self-expression.

The lesson is conducted by students belonging to the League, and the varied program included outside speakers, student discussions, and special music. Social meetings were held frequently throughout the past year to encourage friendship among students.

Kappa Chi

Kappa Chi is a new organization on the campus this year. They strive to develop a spirit of comradeship among students preparing for Christian work, and to spread the Christian spirit over the campus by a united effort. Meetings were held every two months in addition to weekly seminars held weekly under the leadership of President Roadman.

The charter members include: B. Roy Brown, Robert Caine, Willard Cunningham, Wilbur Fosnot, Lawrence Johnson, Ralph Kitterman, Howard Nielsen, Robert Ruleman, William C. Smith, and Josephine Smith. Initiates include: Stanley Anderson, Arthur Beckman, Harold Bockart, Horace Graubner, Louise Madison, Robert Rae, and Philip Sandberg.

Top: Bockart, Caine, Fosnot, Rae.
Middle: Neilson, Sloan, Smith, Graubner.
Bottom: Brown, Roadman, Madison.



Sigma Pi Sigma



Koch

OFFICERS

President George Koch
 Vice-President Bruce Lindsay
 Secretary-Treasurer Charles Wert

Omicron chapter of Sigma Pi Sigma, national honorary physics fraternity, is open to students having completed at least ten hours of advanced physics with an average of B grades or above. Bi-monthly meetings are held, with Dr. M. E. Graber and Prof. Ira J. Gwinn of the physics department, as sponsors of the group. The meetings include discussions of physics and related sciences, and the modern experimentation and advancement made by discoveries of men in the scientific world.

The Pre-Engineers Club

The Pre-Engineers Club is an organization on the campus devoted to scientific pursuits and the spirit of good fellowship. It not only includes future engineers, but also all those who are primarily interested in chemical and physical sciences. Thus the club is separated into affiliated departments; these are the chemistry, radio, photography, and aeronautics divisions.

The first semester of the year the principal function of the Pre-Engineers Club is to prepare scientific experiments for the annual Pre-Engineers' Night. In addition to this, the club has weekly luncheons in conjunction with its business meetings.

OFFICERS

First Semester

President John Swanson
 Vice-President George Koch
 Secretary Max Stern
 Treasurer Fuller Haskins

Second Semester

President George Koch
 Vice-President Vic Alvey
 Secretary Charles Wert
 Treasurer Glenn Smith
 Historian Melvin McKnight

Top: Hempstead, Lindsay, Smith, Stern, Adams, Oakleaf.
 Upper Middle: Winter, Church, McDonald, Shaffer, Koch.
 Lower Middle: Wagstaff, Haskins, Swanson, Leachman.
 Bottom: Wert, Hicks, Scheider, McKnight, Coomer.



Aeronautics

Something distinctly new and different was incorporated within the Aeronautics Department this year when the Civil Aeronautics Authority approved Morningside as one of a select group of colleges in the country to give actual pilot-training under government supervision. A nominal fee of only forty dollars was charged each student. The federal government bore the remainder of the costs.

Twenty students, nineteen men and one girl, selected on the basis of rigorous physical examinations embarked on the flight training course at the beginning of the school year. Ground school work was undertaken immediately under the able supervision of Dr. Graber.

Late in November, the students took their places behind the instructors in the dual control training ships. Before January had passed, every student had made his solo flights, which marked the eight hours of dual instruction. This feat accomplished by twenty students in seven weeks speaks especially well for the instructors and the formulated plan of instruction.

Following this first flight, the students flew solo about three-fourths of the time until a total of thirty-five hours was completed. At this stage, the students were given examinations for a Private Pilot's License by a regular Civil Aeronautics Authority Inspector.

The flying training was under the proficient supervision of Mr. E. L. Graham, who had two efficient and very capable young instructors, Mr. Tom Lynch and Mr. Art. Myers.

The planes used were fifty horsepower, four-cylinder Piper Cubs with the tandem seating arrangement.

The first class of student aviators to become private pilots at Morningside College are: Rollie Buckholtz, Charles Clayton, Marvin Frum, Ted Grier, Edgar Graham, Jr.,



1
4
5
V
X

George Green, Robert Hempstead, Walter Hurd, Lester Jones, Richard Kaup, Margaret Long, Max McCoy, Melvin McKnight, John Pojunos, Charles Richards, Clifford Skalby, Glenn Smith, George Tripp, Bruce Van de Mark, and Roger Younglove.

The transition of these fledglings into private pilots marks a great milestone in the history of the Aeronautics Department. Dr. Graber is deserving of much credit for the success of this new experiment as it was through his tireless efforts and interest in aviation that secured for Morningside College the right as a participant in this national program.

The present plan of the government is to continue the pilot training program for five years. Advanced training, including night flight in a larger plane will be given next Fall. Many members of the class plan to pursue their flying careers as cadets in the Army and Navy Air Corps.

This year's class of pilots extends their heartiest wishes and a warm handclasp to Dr. Graber and to the students who will launch their training next Fall.

Manuscript Club

Manuscript Club was organized on March 18, 1938, under the guidance of Professor Lynn Beyer for the purpose of encouraging creative writing among the students. Membership is based on the approval of an original manuscript.

The club holds mi-monthly meetings at which original manuscripts are read by members, followed by an open forum discussion. One of the traditions of the club is the birthday dinner held in March.

This year the associate adviser has been Mr. Carroll Norling. The club sponsors and edits *Manuscript*, and has, this year, sponsored a short story contest with competitive prizes. It is the truly literary organization on the campus.

OFFICERS

President	Betty Greene
Vice-President	Irene Johnson
Secretary-Treasurer	Margaret Gusteson
Faculty Adviser.....	Miss Mills
Associate Adviser.....	Mr. Carroll Norling

Top: Gusteson, Thoe, Lubbers, Madison, Johnson.
Bottom: McBride, Warner, Huxtable.



Greene

Manuscript Magazine

Manuscript is the literary magazine sponsored and edited by the Manuscript Club to which all students are encouraged to contribute original writings. All material submitted is considered and selected for publication by a committee composed of three members of the club in cooperation with the staffs of other college publications.

Two issues appeared during the year 1938-39, one in December, and the other in May. During the year 1940, one appeared on April 15, in conjunction with the short story contest. The magazine greatly encouraged creative writing by students.

This year's editorial staff, selected by the Board of Control, consisted of: editor—Betty Greene, associate editors—Patricia Warner and Bartlett Lubbers. They have an exchange list with other colleges and universities, and copies are sent to all Sioux City libraries. The magazine is financed by funds from the activity tickets. Miss Mirah Mills and Mr. Carroll Norling acted as consultants this year. The contents of the 1940 issue of *Manuscript* included the following:

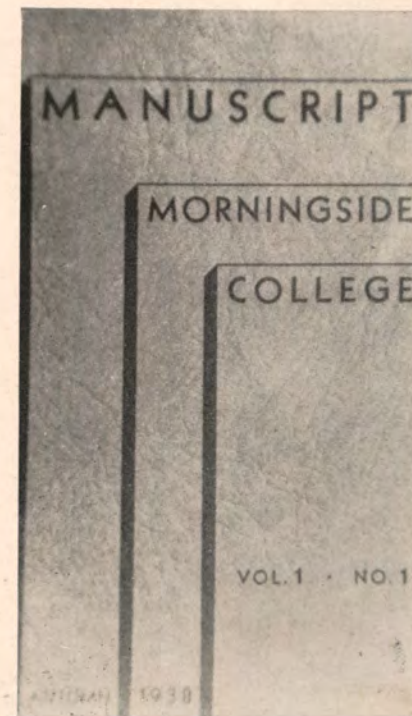
PROSE

1. The Son—Patricia Warner.
2. The Champ—Kenneth Johnson.
3. Lift Thine Eyes—Bartlett Lubbers.
4. Gift of the Innocent—Betty Greene.
5. A Trip to Aunt Jenny's—Irene Johnson.
6. Blue Books—Irvine Thoe.
7. Creation in Chaos—Kathryn Madison.

POETRY

1. Ode to a Moonflower—Irene Johnson.
2. Personification—Eric Liljestrang.
3. Fog—Betty Huxtable.
4. Love's Confusion—Miriam Hawthorne.

The various styles of writing in the magazine permit a wide range of appeal to the readers of it.



1
4
5
V
X

1
4
5
V
X

1
4
5
V
X

Collegian Reporter

STAFF

Fred Davenport Editor-in-Chief
 Robert Hamel..... Managing Editor
 Edward Hendricks..... Business Manager
 B. Roy Brown..... Editorial Assistant
 Patricia Warner..... Dramatic Editor
 Winifred Cheely..... Exchange Editor
 Ray Hughes..... Sports Editor

Special Writers—Mary McBride, Josephine Dixon, Francis Kingsbury.
 Reporters—Ruth Kingsbury, Alice Hanson, Alice Clayton, Garry Wallman, Gerry Fischer, Kenneth Johnson, Morgan Harrison, Irvine Thoe.

The all-college newspaper is written, edited, and managed by students whose duty it is to publish an edition each week. Exchanges with colleges and high schools throughout the United States result in a mailing list of approximately five hundred issues each week.

The various departments adequately cover the social, athletic, and political phases of Morningside campus life. Gossip and joke columns furnish humor, and the exchange column acquaints Morningside students with thoughts from other campuses.

Hendricks
Hanson
Harrison

Johnson
Wallman
Thoe

Cheely
Warner
Fisher

Clayton
Hughes
Dixon

Hamel
McBride
F. Kingsbury

Wolle
Brown
R. Kingsbury



Board of Control

The Board of Control of student publications consists of five faculty members and five students. It elects the editor and business manager of both the *Collegian Reporter* and the *Sioux*. Its main purpose is for guidance and advice in matters of publication, and censors publications only at the request of the student council.

Professor H. F. Kanthlener is chairman of the board whose faculty members include Miss Mirah Mills, Professor Ira J. Gwinn, Mrs. Elsy Sater, and Dr. T. C. Stephens. The student members are Minetta Miller, senior, and secretary of the board; Garry Wallman, junior; Geraldine Booth, sophomore; Gwendolyn Downey, freshman; and Ray Gusteson, representative at large. Ex-officio members are Editor Fred Davenport and Business Manager Ed Hendricks of the *Collegian Reporter*. Members for the coming year will be elected by the present board.

Top: Miller, Wallman, Booth, Gusteson.
 Bottom: Kanthlener, Mills, Gwinn, Sater, Stevens.



W. S. G. A.

OFFICERS

President	Kathlyn Kolp
Vice-President	Genevieve Whittington
Secretary	Betty Bootjer
Social Chairman.....	Alice Scott
Senior Hall Chairman.....	Genevieve Whittington
Junior Hall Chairman.....	Dorothy Brooke
Sophomore Hall Chairman.....	Lucille Fritzsche
Freshman Hall Chairman.....	Jean Fowler

The Women's Self Governing Association is the board elected by the residents of the women's dormitory to act as the governing body. Disciplinary measures are settled through the Honor Court, composed of the board members and Mrs. Winifred Cross Felton, social director of the dormitory.

W. S. G. A. annually sponsors two formal dinner-dances, one just preceding the Thanksgiving vacation and the other in the Spring. A Christmas dinner for non-residents, teas for Sioux City and out-of-town women, Sunday afternoon musicales, pajama parties, spreads, and holiday parties are traditional features for the entertainment of the dormitory residents.

The re-dedication of the dormitory, with members of W. S. G. A. as characters in the "Lighting of the Hearth," a skit written by one of the first residents, is an annual Fall feature, which includes a formal dinner and talks by Miss Lillian E. Dimmitt and by Mrs. Earl A. Roadman.

Felton
Scott

Kolp
Fowler

Whittington
Brooke

Bootjer
Fritzsche



Agora

OFFICERS

President.....	Dorothy Ann Olson
Vice-President	Betty Schunck
Secretary	Alice Clayton
Treasurer	Lucile Pippett
Senior Representative.....	Nelly De Vries
Junior Representative.....	Joyce Held
Sophomore Representative.....	Betty Bootjer
Freshman Representative.....	Mariellen Rifenburg

Agora is the truly democratic organization on the campus since it includes in membership every girl on the campus. Miss Agnes Ferguson was the founder of the group, and it was her aim to promote fellowship among the young women in college.

The activities sponsored by Agora include the Campus Sister movement in the Fall of the year, a carnival held this year at the Dormitory, a tea for all the girls in school, the Agora edition of the *Collegian Reporter*, and the annual Mother and Daughter Banquet in the Spring.

Olson
DeVries

Schunck
Held

Clayton
Bootjer

Pippett
Rifenburg



1
4
4
5
1
0
V
X

Student Union



The Student Union Room on the third floor of Main Hall has been one of the most enjoyable features of the school since it was incorporated during the year 1938-39.

Comfortably furnished and provided with a radio and magazines, the Union has been a great asset to student life.

The Women's Lounge is a comfortable retreat for the women students of Morning-side. Girls may retire here for studying, chatting, or relaxation. The room has been especially valuable to freshman women.



Women's Lounge

1
4
4
5
1
0
V
X



KJ

Features

Presenting . . .

Features of the 1940 Sioux

Including

REPRESENTATIVE SENIORS . . .

Selected by a faculty committee as representative of character, scholarship, leadership, service, and future possibilities.

BRAVEST OF THE BRAVE . . .

WHO'S WHO . . .

HOMECOMING . . .

MISS MORNINGSIDE OF 1939 . . .

THE 1940 SIOUX KING AND QUEEN . . .

Selected by Claudette Colbert and Tyrone Power as signifying beauty, grace, poise, personality, and character.

1
9
4
0

S
I
O
U
X

1
9
4
0

S
I
O
U
X

Representative Seniors

MISS BETTY LOU GREENE

Betty is known at Morningside as a scholar in the true sense of the word. Her executive ability was brought out by her presidencies of Kappa Pi Alpha Sorority, Collegiate Players, and Manuscript Club. She was one of the organizers of Manuscript Club and worked on the *Manuscript Magazine*, and on the *Collegian Reporter*. Her future possibilities are great as based upon her college work.



Representative Seniors

MISS DOROTHY ANN OLSON

Dorothy Ann has been one of Morningside's most active students. Among her many honors were "Miss Morningside of 1939," president of Agora, president of Alpha Psi Omega, and president of Kappa Zeta Chi Sorority. Her ability in dramatics has been shown both by her acting and by her backstage work. She has been selected as a beauty queen several times, and has been an interested and willing worker in several fields of activity.



MR. ALFRED P. STROZDAS

"Al" has gained many friends at Morningside, through a friendly personality and a cooperative spirit. He has been active in athletics, both in intramurals and in varsity basketball, and has held membership in the "M" Club. Vice-presidency of the Student Body as an Independent is evidence of his popularity with the students. His has been a worthwhile college career.

MR. B. ROY BROWN

Roy has demonstrated his abilities by his work at Morningside. He has been a dependable and reliable worker here at school. His primary interest is in the ministry, and he is a member of the Ministerial Association. Three honorary fraternities claim his membership, and music has also been an interest as shown by his participation in choir and band. Much may be expected of Roy in the future.



Representative Seniors

MISS MINETTA MILLER

Minetta is one of the busiest persons on the campus. Her activities include presidency of Pi Gamma Mu, membership in Psi Chi, Board of Control, and Collegiate Players. Her position as Dr. Roadman's secretary is demonstrative of her ability to get along with people and with life. She will be missed from student life on the campus after her graduation.



Olson, Halford —S. C. Journal.

Bravest of the Brave

Prior to the last football game, the Sioux Scalpers presented the first non-partisan election, when the student body was asked to select their favorite on the football squad. Absolute secrecy prevailed, and on the following Friday, Dorothy Ann Olson presented the Bravest Brave, Dewey Halford, a beautifully engraved tomahawk, emblematic of his selection.

Who's Who

WHO'S WHO AMONG STUDENTS IN AMERICAN UNIVERSITIES AND COLLEGES

To be included in Who's Who, a student must have a combination of qualities listed below to indicate that he is outstanding and an asset to his school: character, leadership in extra curricular activities, scholarship, and potentialities of future usefulness to business and society. The following students were selected for this honor by a faculty committee: Morgan Harrison, Alfred Strozdas, Lester Menke, Lawrence Johnson, Lester Olson, Betty Green, Irene Johnson, Dorothy Ann Olson, Helen Osbey, Kathryn Kolp.

Harrison, Strozdas, Menke, L. Johnson, Greene, I. Johnson, D. Olson, Osbey, Kolp.

—S. C. Tribune.



One Hundred Twenty-nine

MR. JOHN SWANSON

John has been one of the unsung heroes on the campus. He accomplished a great deal in a quiet fashion, and has been a valuable asset to the school—especially in the department of science. He has been Dr. Graber's right-hand man, and his activities include offices in Pre-Engineers' Club and in Sigma Pi Sigma. It will be hard to find as an efficient and thorough worker as John has been.

One Hundred Twenty-eight

1
4
5
1
4
5
1
4
5
1
4
5

1
4
5
1
4
5
1
4
5
1
4
5

Homecoming



Miss Morningside of 1939

Miss Dorothy Ann Olson, in being crowned "Miss Morningside of 1939," received the highest honor which can be bestowed upon any girl in Morningside. Elected by a popular student vote, Miss Morningside is the president of the Kappa Zeta Chi Sorority and of Agora. Also reigning over the homecoming festivities were two girls elected by the student body as attendants—Miss Helen Osbey and Miss Genevieve Whittington. The Queen and her attendants were revealed at the Pep Chapel on November 3, and presided over all the events of Homecoming on November 4. The barbecue, snake dance, parade, football game, and dance rounded out a memorable Homecoming for 1939.



Miss Helen Osbey



Miss Genevieve Whittington

Miss Dorothy Ann Olson



1940 Sioux King

Six of Morningside's men were selected by Roy Justus and George Vanden Brink, local artists, as candidates for the 1940 Sioux King. The following were selected: Don Ballentine, Robert Craven, Robert Dannenberg, Ted Macur, Clifford Skalby, and Harold Wissink. The pictures of the six were forwarded to Hollywood to Claudette Colbert, who did the final judging.

"I think all of the six are as handsome as can be, and each one at one time or other during the momentous selecting was in the number one position."

—CLAUDETTE COLBERT.



Mr. Robert Craven

1940 Sioux Queen

Six of Morningside's women were selected by Roy Justus and George Vanden Brink, local artists, as candidates for the 1940 Sioux Queen. The following were selected: Helen Johnson, Anna Marie Larson, Zola Marcussen, Dorothy Ann Olson, Helen Osbey, and Betty Lou Welding. The pictures of the six were forwarded to Hollywood to Tyrone Power, who did the final judging.

"I have chosen this student because of her beautifully expressive eyes combined with the sweetness and charm of her character which is very evident to anyone looking at her portrait."

—TYRONE POWER.



Miss Helen Osbey

House of Hamburgers

"From Morningside—For Morningside"

Earl FitzPatrick

1405 Morningside Avenue

MEALS

SHORT ORDERS

WAGER'S SERVICE STATION

White Rose Gasoline

En-Ar-Co Oil

Goodyear Tires and Batteries

National Specialized Lubrication

ALL NIGHT SERVICE

1412 Morningside Avenue

The Favorite Candy of the Northwest . . .

La Fama CHOCOLATES

One of a Family of Famous Chocolates

Made by

Johnson Biscuit Company

Sioux City, Iowa

Keep Youthful
with Dairy
Products



MILK DEALERS
OF SIOUX CITY

PAUL A. WARNER
President and General Manager

Adair - Warner Printing Co.

Printing with Service

Phone 8-7831

516 Sixth St. Sioux City, Iowa

Conservatory Notes



DUSTY'S PARK LUNCH

BREAKFASTS : LUNCHES
DINNERS

Swift and Courteous Service

PETERS PARK

REAL MALTED MILKS

Thick and Creamy—10c

Hot Chocolate

Special Milk Shakes—5c

All Kinds Fountain Drinks

PRESCRIPTIONS

TOILET ARTICLES

SCHOOL SUPPLIES

Get It Here

CAMPUS PHARMACY

1419 Morningside Avenue

W. J. Shane, Proprietor Phone 6-6957

Everything for Programs

PLAYS
PAGEANTS
READINGS
OPERETTAS
STUNTS

WETMORE DECLAMATION BUREAU

1631 South Paxton Street
SIOUX CITY, IOWA

CALENDAR

SEPTEMBER

- 11—Nice-looking bunch of freshmen invade campus. Registration.
- 20—Dr. Roadman gives Matriculation Address. Faculty on parade.
- 25—Sorority rushing begins, which means one week of headaches for everyone concerned.
- 29—The boys take the first conference game at North Dakota U., 15-0.
- 30—Congratulations to all the new pledges.

OCTOBER

- 3—Freshman-Sophomore Day. Spook Austin right out in the middle of everything. Outcome? Freshies wear green caps till Thanksgiving.
- 6—Faculty Reception. The girls turned out well, but—
- 7—The boys come through with another win over Dakota Wesleyan, 27-0.
- 16—Surprise! A really good Monday Chapel. Dr. King speaks on the Psychology of Drunkenness.
- 20—Professor Van Horne again inspires the squad to bring back that Coyote pelt. Frat, bid day.
- 21—Parents' Day innovated. It's a success even if the U. beats us 7-6. A big bouquet to the band for their performance of "Stardust."

NOVEMBER

- 3—Scoop! Dorothy Ann Olson beautiful as Miss Morningside. Moat puts over one grand Homecoming.
- 4—Sig Rho and Pi floats again carry off cups. 7-0 for Iowa State.
- 9—Psychology Night.
- 10—"Our Town" brings the dramatic department to the front again. Orchids to the whole cast, especially Peg Long for a splendid job.
- 11—Mid-semester! Headaches or smiles?
- 17—Dewey Halford named Bravest Brave. Lily Pons opens Concert Course with a thrilling concert.
- 25—Kitty Kolp stars at Dorm Formal.
- 29—Whoops! Vacation! Too bad that with two Thanksgivings we only get one vacation.

DECEMBER

- 4—Back again. The B. B. team looks like a winner, even if Iowa State was too tough for them.
- 5—Vacation brought a diamond ring to Nancy and a big grin to Red. Nicky and Jack join the Morningsiders-in-Chicago Club as Mr. and Mrs.
- 8—Ishkoodah Formal. Even the date bureau didn't bring a crowd.

Campus Couples

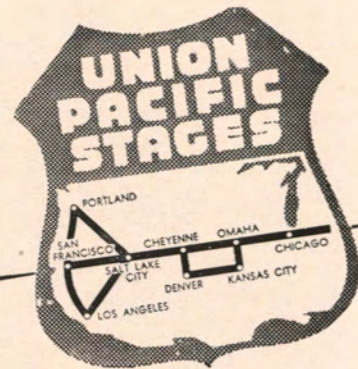
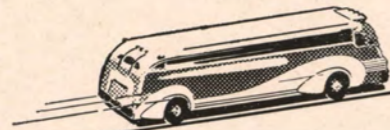


Compliments

First National Bank

In Sioux City

Rediscover America
BY AIR-CONDITIONED SUPER-COACH !



See America at its best—and see it best by *highway*—by *air-conditioned* Union Pacific Super-Coach! This modern, “American-style” travel is the one way to go places and really SEE things . . . intimate “close-ups” of romance and beauty you’d miss, traveling any other way! The cost? Amazingly little! You go *farther . . . see more . . .* yet spend *less!* It’s the ideal way to make short trips, too. See your local Union Pacific bus agent for complete travel information.

DEPOT
Fifth and Douglas
Local Phone 5-7678

UNION PACIFIC STAGES
The Overland Wonderland Route

THANK YOU . . .

for the privilege of
knowing you.

“It’s Been Great”

Gunny’s Cafe

Grayson’s

SUITS ME

415 Fourth Street

SIOUX CITY, IOWA

Choir Cut-ups



MAKE

Member F. D. I. C.

THE TOY NATIONAL BANK

YOUR BANK

Intelligent and Conservative Banking Since 1873

Beuttler & Arnold

Architects and Engineers

Specializing in the Design of
Public Buildings

Phone 5-5374

450 Insurance Exchange Building
Sioux City, Iowa

KODAKS

Developing and Printing

HOME MOVIES

**Eastman's
Kodak Stores, Inc.**

608 Pierce Street
SIOUX CITY

CALENDAR—Continued

- 18—Scotty and Oliver score one for Morning-side by their parts in the Messiah.
- 19—That event of the year! The Winter Festival! And no one was disappointed.
- 29—So long. See you next year.

- 22—Semester exams begin. Who stays and who goes home?
- 26—Registration. Welcome to eighteen new students.

JANUARY

- 8—Now we can get rid of Christmas neckties and get rested up from vacation.
- 15—Woman chases man—News flash! Glenns Corderman and Eddie Graham win Sadie Hawkins costume event. Millie Jensen shows what comes after she catches him, by exhibiting a ring on that finger placed there by Jason Saunderson, Jr.

FEBRUARY

- 9—Professor Van Horne presents eighteen M sweaters to football Maroons.
- 17—Pledge formals climax a hectic week. New sorority members eagerly welcomed.
- 21—"Love in Livery" nothing short of colossal. Gene Kennedy simperingly beautiful in satin and lace, and Moat and Pooley perfect examples of young love.

J. C. RENNISON FLORAL CO.

516 Nebraska Street
SIOUX CITY, IOWA

WIRE FLOWERS ANYWHERE

"Say It with Flowers"

FRANK'S CAFE

Lady cooks have a style of cooking which appeals to our restaurant-going public. The food tastes like a home cooked meal and that means a lot.

GLASS FRONT

607 Pierce Street Sioux City

Seen Around School..



BETTER YOUR SCORE
by using
A. G. Spalding & Bros.
Athletic Equipment

DWIGHT HAUFF SPORTING GOODS

511 Pierce Street

Phone 8-1877

Meet Your Friends at
Barney's College Service Store

Where you can buy everything
in college needs.

CARA NOME TOILETRIES
and all other brands.

OUR FOUNTAIN SERVICE IS THE
VERY BEST

Barney's Morningside Pharmacy
The Rexall Store

Van Schreeven & Co.

Jewelers and Optometrists

508 Fifth Street, Near Pierce Street

Telephone 8-1213

SIOUX CITY, IOWA



SECURITY
NATIONAL BANK
of Sioux City

Member F. D. I. C.

Off Moments



THIS BOOK IS
 A SPLENDID
 EXAMPLE OF
 VERSTEGEN
 PLANNED PRINTING

WHEN the low handicap man gets his birdie, the chances are that there was more to it than just luck or the law of averages. There was, we duffers can be sure, the sweet combination of physical coordination, brain-work and nerveless concentration. VERSTEGEN, in typical style, leads the field with new treatments in quality year book printing that is as welcome as a sub-par round in golf, and fashioned from the same compound of manual adroitness and heady play.

VERSTEGEN
PRINTING COMPANY
 615 Douglas Street
 SIOUX
 CITY
 IOWA

Ben Franklin Stores

4006 Morningside Ave. Peters Park

"Your Dime Store at Peters Park"

Everything from Five Cents to
 One Dollar and Up

T. L. SCHAEFER, Proprietor



**WOODBURY COUNTY
 SAVINGS BANK**

CALENDAR—Continued

25—Who didn't get a posture tag?

MARCH

- 1—Zets vs. Ishkoodah, Simons vs. Haenfler, and Brains vs. Brawns—new innovation in athletics. Dr. Marshall vigorously applauded, but Brawn finally triumphs.
- 2—Ruth Olsen and Les Menke reign as Health Monarchs. Ellajean Waddell, Nancy Lowry, Dave Denny, and John Kolp would discourage any doctor.

9—Prim and Iseminger announce honorable intentions at the Zet formal. Prof. Stewart wield a wicked ankle.

10—Buck Ballentine rides again! Pi formal big success.

18—Mid-semesters—so soon?

11—Orlan Ott returns from Chicago Golden Gloves battles. Handsome in a robe which is visible token of Morningside affection for him. (Sigh, heart throb, sigh—wotta man!)

**THE
 Council Oak Stores**

Your Friend at Mealtme

IOWA :: NEBRASKA :: SOUTH DAKOTA :: MINNESOTA

**ANDERSON'S
 BAKERY**

Morningside's High Class
 Pastry Shop

At Peters Park Phone 6-5966

Ferris Florists

Flowers for All Occasions

Telephone 8-7505

Warrior Hotel Sioux City, Iowa

Youngberg
STUDIOS

615 Pierce

Knowing that you have obtained the best is significant when you purchase photographs. All Youngberg photographs have our imprint . . . such work carries a value far beyond the price paid.

Modern equipment . . . Large groups such as weddings and family groups . . . also photographs of children and copies of old photographs.

Thirty-five Years of Leadership

Between Classes . . .

DRINK

Coca-Cola

In Bottles

It's the Refreshing Thing to Do

Chesterman Co.

CALENDAR—Continued

- 24—Mike and Strez play their last game for the Maroons—lose in the last quarter to I. S. T. C.
21—Home to greet the Easter bunny.
25—Choir tours four states in super-coach buses. Would we were mice or cockroaches. We've heard about those choir trips.

APRIL

- 1—We knew they were fooling—or were they? Classes really did start again.
15—Editor and assistant tear their hair! Annual to press.
20—Ath formal—pulenty swish!

MAY

- 23—Commencement formal. 1940 Sioux King and Queen revealed amidst pomp and splendor.
30—No classes—Memorial day.

JUNE

- 1—Finals are all over—two sighs of relief.
2—Baccalaureate—seniors dignified in cap and gown.
3—Commencement! Congratulations and good luck to a bunch of swell people we have been glad to know.

So long!

BETTER LIGHT and BETTER GRADES

Does studying tire you easily? Do your eyes trouble you? Do you get nervous and fidgety while using your eyes for close work? Do you squint? Poor lighting may be the cause of any one or all of these discomforts. Science has discovered that the remedy often is better lighting. Read and study at home with I. E. S. Study or Floor Lamps. They are made for safe seeing. They conserve sight and make work easier—often make for better grades.

Sioux City Gas & Electric Company

CRAFTSMANSHIP



BIERMAN ENGRAVING CO.
MAKERS OF PERFECT PRINTING PLATES
304 PIERCE ST. - - - SIOUX CITY, IA.

