

SIoux

1

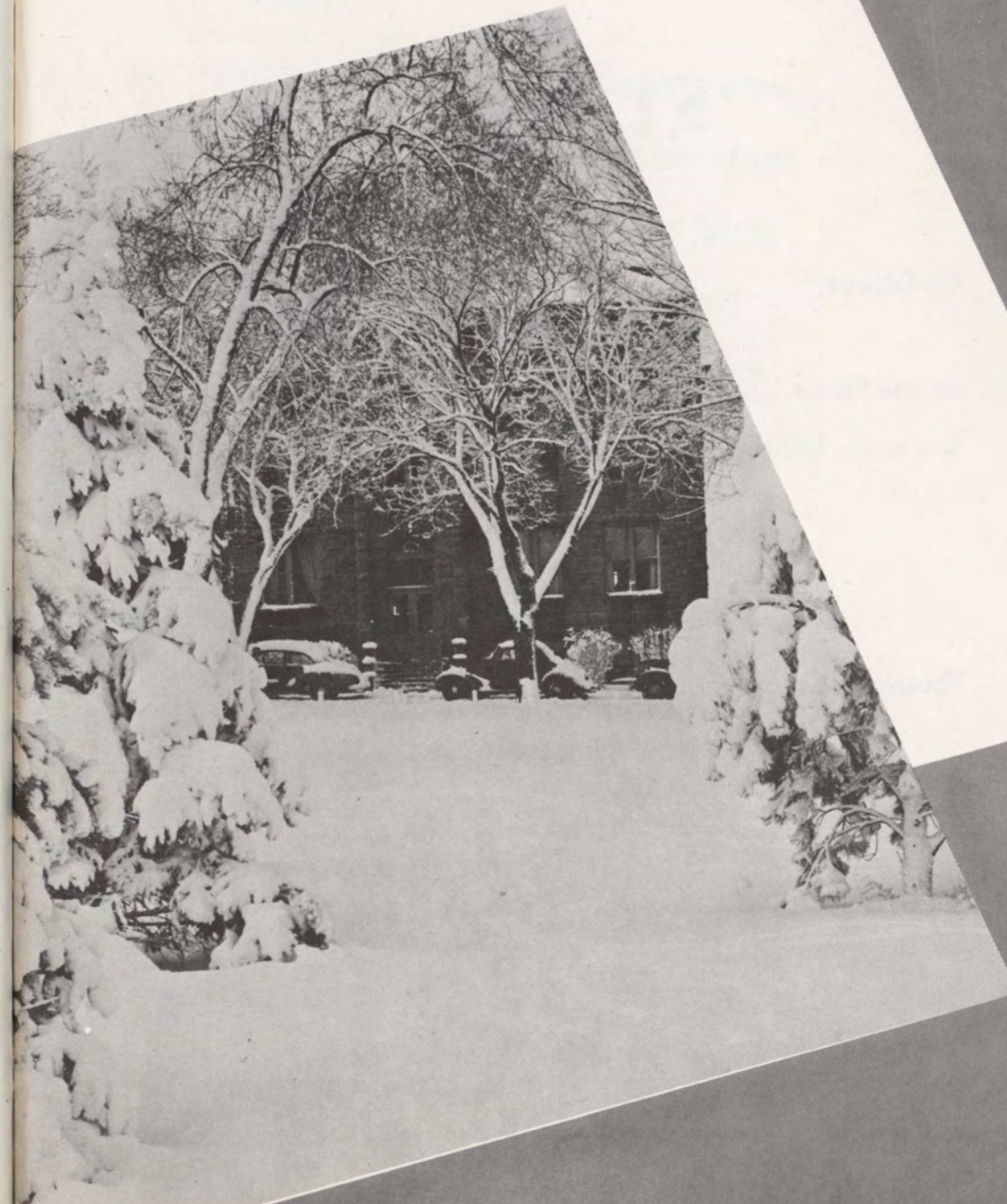
9

5

5

2003.1.4253

1955
SIOUX
MORNINGSIDE COLLEGE
SIOUX CITY, IOWA



Sioux

Vol. 56

1955

Staff

Co-Editors.....Pat Thacker
Gretchen Jensen
Sports Editor.....Kent Watkins
Associate Editors.....Faye West
Joyce Arnold
Xenia Perez
Merilynn Jordon
Dick Parkhill
Photographer.....Art Barrett

Contents

Campus Views
Administration
Student Body
Sports
Fraternities
Sororities
Organizations
Arts
Highlights



To Miss Alva Tolf the 1955 SIOUX is humbly dedicated.
Her service to the Morningside Student body has
given her an undying place in the hearts of us all.

Dedication



Campus Views



Main Hall



Alumni Gym

George M. Allee Gymnasium



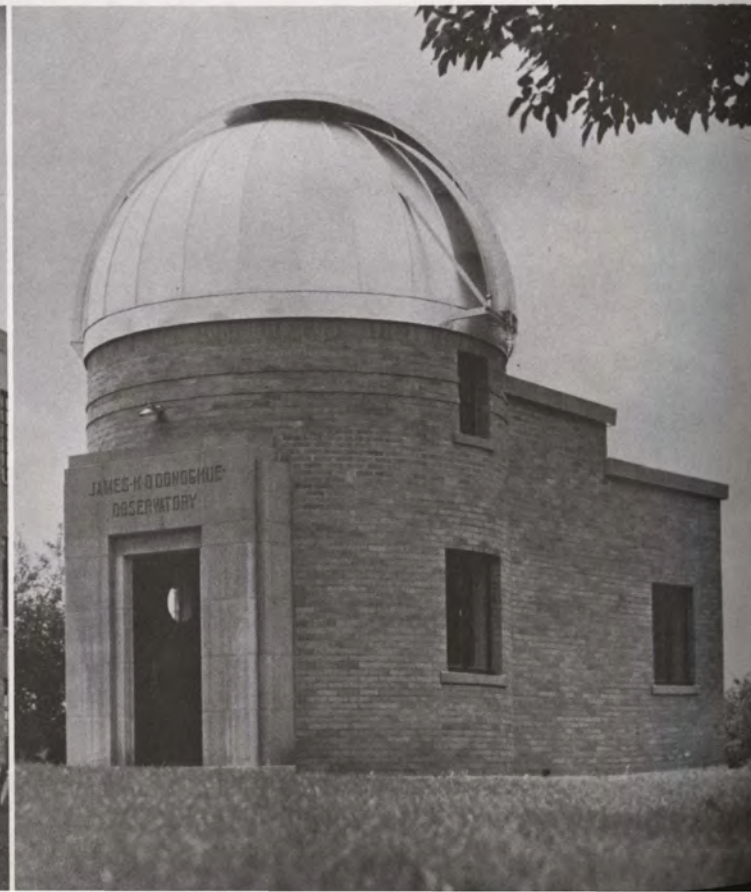


Conservatory of Music

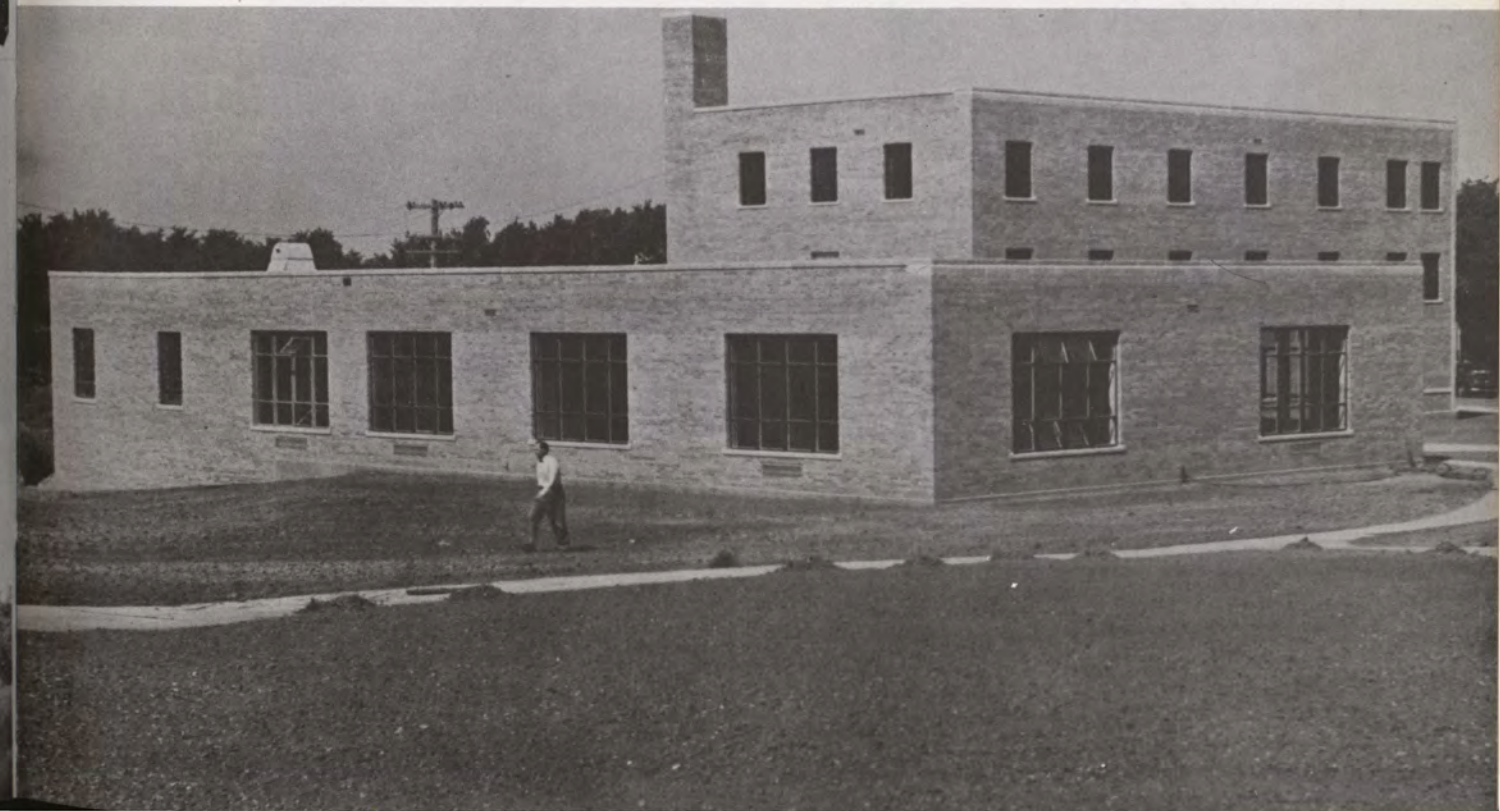


Lillian Dimmitt Hall for Women

A. W. Jones Hall of Science—J. H. O'Donoghue Observatory



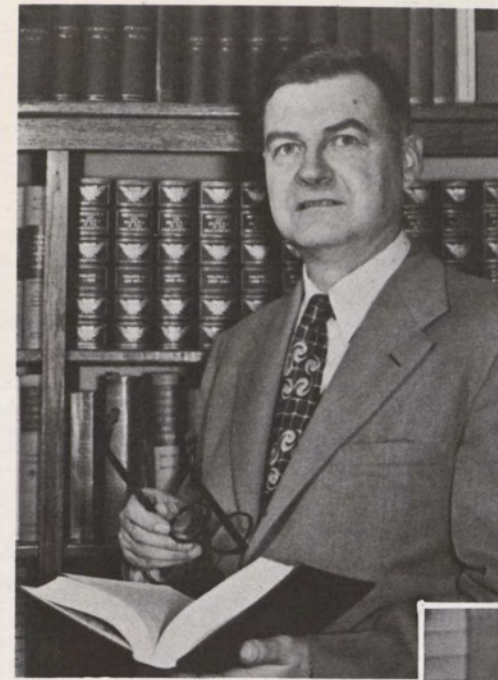
Student Union and Men's Dormitory



ADMINISTRATION



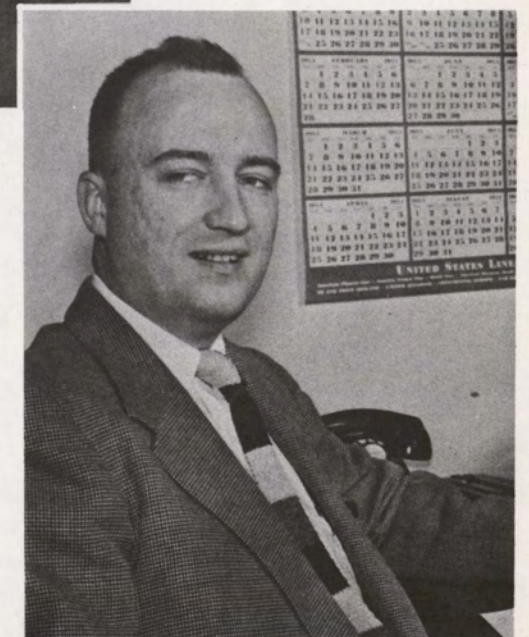
President Earl A. Roadman



Dean Thomas Tweito



**Dean of Women
Vesta Burris**



**Dean of Men
Miles Tommeraasen**

LYLE LEIDER
Vice President



MR. OLSEN
Business Manager

MR. BAUER
Professor of Sociology
Iowa Wesleyan College
Drake University
State University of Iowa
University of Chicago
Northwestern University



MR. BOWMAN
Associate Professor of
History
Augustana College
University of Nebraska
University of Iowa
University of Omaha

MR. LILJEGREN
Director of Admissions



MRS. MAHOOD
Alumni Secretary

MISS BOWNE
Director of Physical
Education for Women
Coe College
University of Wisconsin
University of Iowa



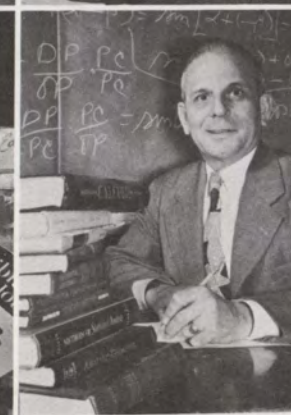
MR. BUCKINGHAM
Director of Athletics
Morningside College
Stanford University

MR. WALKER
Manager of College
Book Store



MRS. PAULK
House Mother,
Men's Dorm

MR. BURRIS
Librarian
Otterbein College
Bonebrake Theological
Seminary
University of Chicago



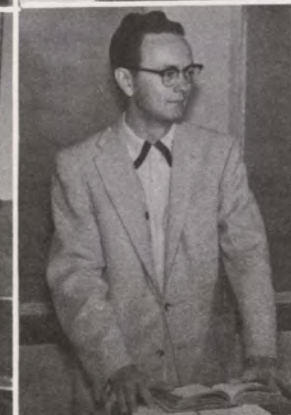
MR. BUSHYAGER
Professor of Mathematics
Allegheny College
Pennsylvania State College
University of Michigan
University of Chicago

MRS. DAY
House Mother,
Dimmitt Hall



MR. ASHBY
Professor of
Livestock Marketing
University of Nebraska
Nebraska Wesleyan
University
University of Minnesota
University of Illinois

MRS. CARLSON
Instructor of Home Economics
Kansas State College
Colorado University
Wichita University
Kansas State Teachers'
College



MR. COATS
Instructor in English
Loras College

MR. ASPREY
Assistant Football Coach
Morningside College
Colorado University
Denion University, Ohio

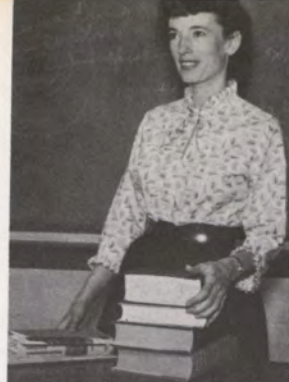


MISS BATZER
Associate Professor of English
Central Michigan College
University of Michigan

MR. DROULLARD
Head Football Coach
Associate Professor of
Mathematics
Dubuque University
Boston University
University of Colorado
University of Wisconsin



MISS DUTTON
Assistant Professor of English
and Dramatics
Morningside College
University of Nebraska
Central School of Speech
and Drama,
London



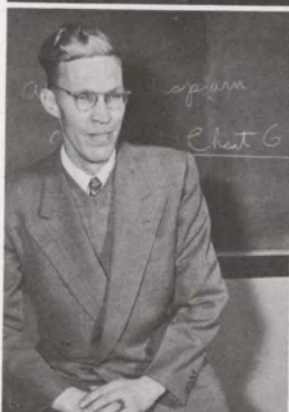
MR. EIDSMOE
Professor of Education
Yankton College
University of South Dakota
University of Chicago

MR. KRSKA
Associate Professor of
Chemistry
Morningside College
University of Kansas



MISS KUHN
Professor of Romance
Languages
Eastern Illinois Teachers'
College
University of Laval,
Quebec
University of Paris,
France

MR. FYFE
Professor of English
University of Toronto
University of Chicago
Oxford University



MR. GRABER
Professor of Physics
Heidelberg College
University of Iowa
University of Michigan
Ohio State University
University of Chicago

MR. KUCINSKI
Head of
Violin and Orchestra
Morningside College
Cleveland Institute of
Music
Julliard Graduate School
of Music



MR. LARSON
Director of the Conservatory
of Music
St. Olaf College
Northwestern University

MISS GRAMMER
Assistant Professor and
Head of Music Department
University of Nebraska
Northwestern University
University of Colorado



MR. CARLETON
GREENE
Director of Religious Activities
University of
Southern California
Boston University

MR. LOWRY
Instructor in
Wood-wind Instruments
Morningside College
University of South Dakota



MRS. MacCOLLIN
Instructor of Voice
Oberlin Conservatory
of Music
Morningside College

MR. ROBERT GREENE
Assistant Professor of Physics
Morningside College
State University of Iowa



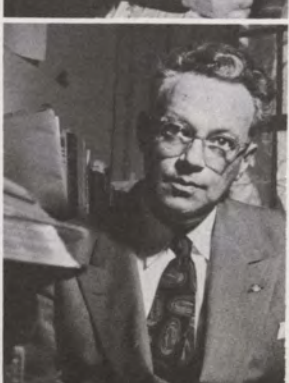
MR. GWINN
Registrar
Associate Professor of Physics
Morningside College
State University of Iowa
University of Minnesota

MR. MacCOLLIN
Professor of Voice
Oberlin Conservatory
of Music
Chautauqua Summer School
of Music
Morningside College
George Peabody College
for Teachers



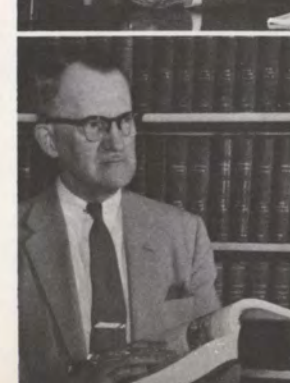
MISS McNEE
Associate Professor of
Elementary Education
Upper Iowa University
University of Chicago
University of Iowa
University of Minnesota

MR. HAWTHORN
Professor of Sociology
Iowa State College
University of Wisconsin



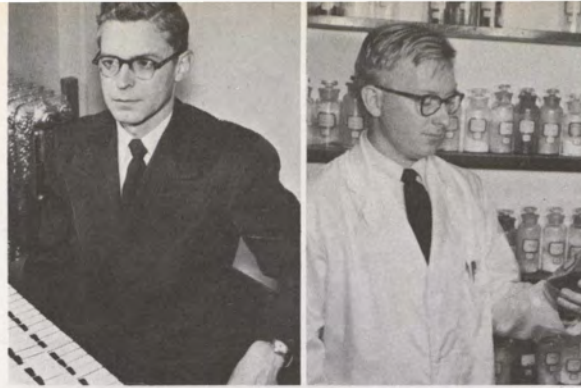
MR. HILE
Professor of Speech
Lamont School
University of Denver
University of
Southern California
University of Washington

MR. MILLER
Associate Professor of
Psychology
Illinois Wesleyan University
University of Chicago
Harvard University
University of Tennessee
New York University
George Peabody College



MRS. MORRISON
Modern Dance Instructor
Chicago Art Institute
University of
North Carolina
Northwestern University

MR. MORRISON
Associate Professor
of Musical Theory
Michigan State College
Eastman School of Music
University of Pittsburgh
The George Washington
University
University of Indiana



MISS MURRAY
Professor of History
Morningside College
University of Illinois
Columbia University
Washington University



MRS. PYLE
Foreign Studies
Assistant Professor in
Secretarial Science
Morningside College
Foreign Studies



MR. SPORNITZ
Instructor of
Economic Theory
University of North Dakota



MR. WALSH
Associate Professor
of Philosophy
Boston University
Harvard University
University of London



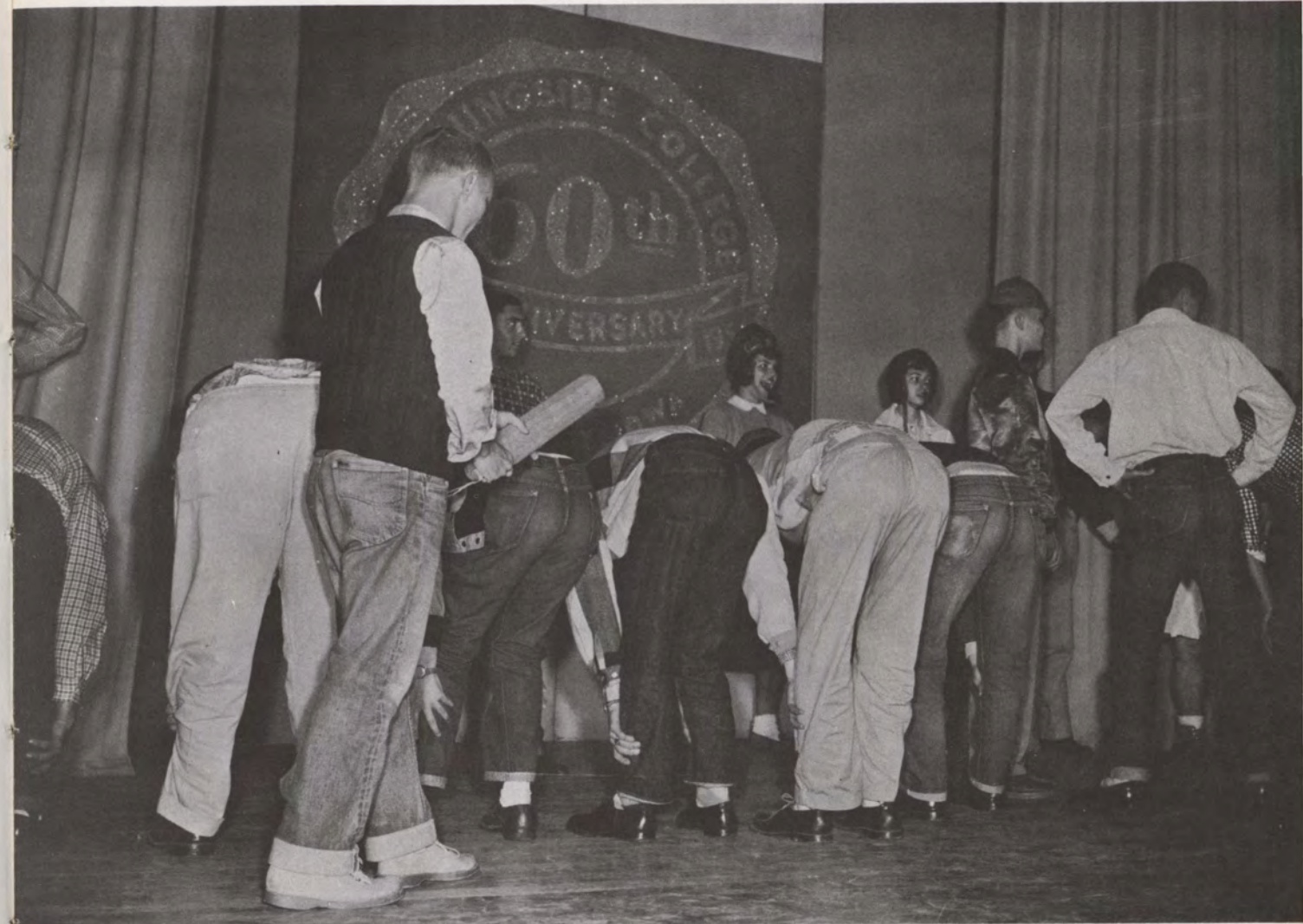
MR. MOULTON
Assistant Professor of
Chemistry
Sioux Falls College
University of Minnesota

MR. NYDEGGER
Professor of Biology
Iowa State College
University of Nebraska
State University of Iowa
University of
Southern California

MRS. SCOTT
Instructor in English
Albion College
Michigan State College
Northwestern University

MR. SWINGLE
Assistant Professor in
Piano forte
Conservatory of Music,
Cincinnati
Foreign Studies

MR. ZIMMERMAN
Head of Art Department
American Academy of Art
Art Institute of Chicago
University of Chicago
Roosevelt College





Left to right: Nancy Lehan, treasurer;

Betty Erickson, secretary;

Terry Walker, vice president;

Wes Boldt, president.

**S
E
N
I
O
R
S**

Dale Richard Alberts
Sioux City, Iowa

Loren Eldon Anderson
Sloan, Iowa

Wesley H. Boldt
Calumet, Iowa

Robert Niel Bostrom
Cincinnati, Ohio

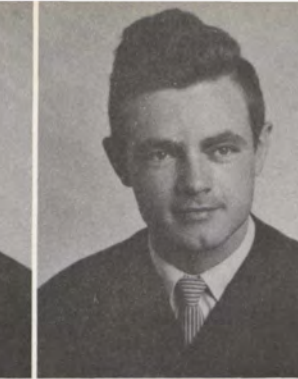
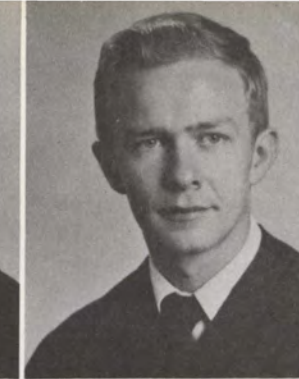
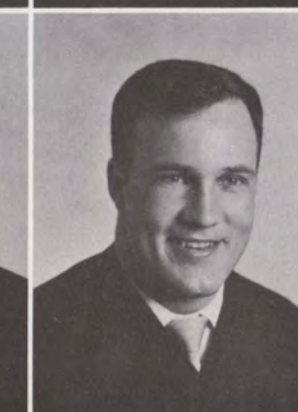
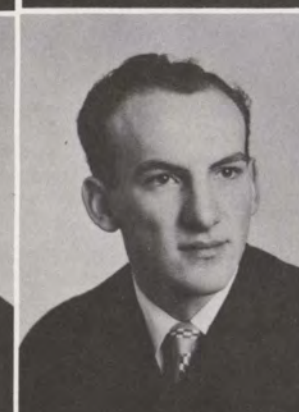
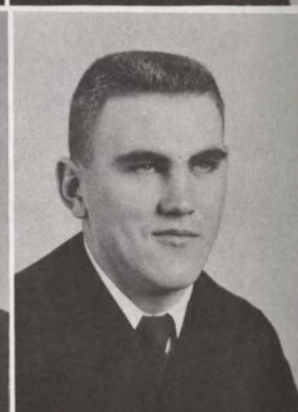
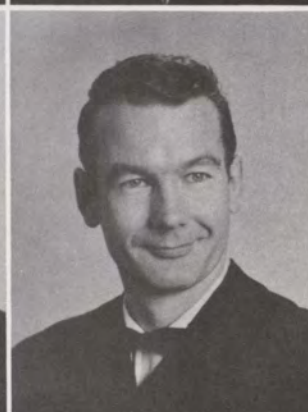
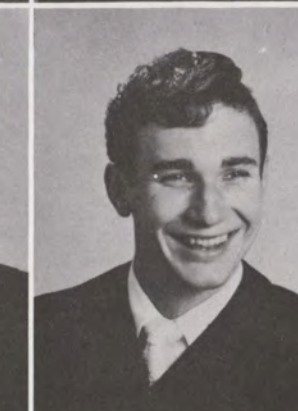
William D. Brown
Sanborn, Iowa

Alvin Lewis Brunsting
Hull, Iowa

Edwin Leo Brunsting
Hull, Iowa

George Calvo
Panama

James Kenneth Dunn
Sioux City, Iowa



Betty Lou Erickson
Sioux City, Iowa

Donald Charles Foss
Sioux City, Iowa

Blaine Homer Garlow
Hinton, Iowa

Clark Evan Gassman
Akron, Iowa

Amy Williams Gohring
Denver, Colorado

Roger Edward Gohring
Onawa, Iowa

Richard Thomas Graham
Sioux City, Iowa

Monte Dean Gruett
Sioux City, Iowa

Tom C. Hackney
Hartford, So. Dak.

Ruth Ann Hantla
Salix, Iowa

Robert Hildreth
Rockwell City, Iowa

Kermit LeRoy Isaacson
Sioux City, Iowa

Douglas Edward Jones
Sioux City, Iowa

John Herbert Kopecky
Clear Lake, Iowa

Wally Krone
Sioux City, Iowa

**S
E
N
I
O
R
S**

S
E
N
I
O
R
S

Donald Kurtenbach
Ethan, So. Dak.

Earl A. Logan
Sioux City, Iowa

Wilbur Long
St. Louis, Missouri

Curtiss Griffin Lovelace
Sioux City, Iowa

Lyle Keith McDole
Sioux City, Iowa

Sonya Ellen Mackintosh
Skokie, Illinois

Harold Gene Martin
Sioux City, Iowa

Roberta Marie Maurer
Sioux City, Iowa

Dwaine Francis Miller
Sioux City, Iowa

Robert Bruce Miller
Sioux City, Iowa

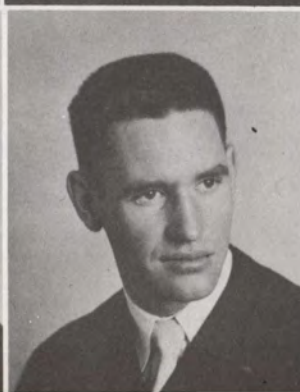
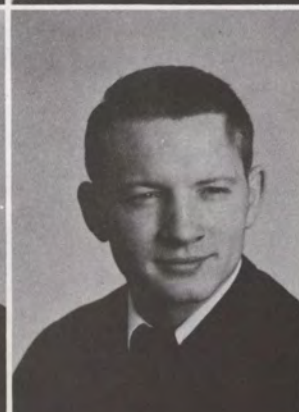
Robert Franklin Motter
Early, Iowa

Don Gordon Murray
Sioux City, Iowa

Duane Oleson
Sioux City, Iowa

Donald William Palmer
Sioux City, Iowa

Michael Paradisanos
Greece



Eugene Persinger
Onawa, Iowa

Joanne Preul
Spencer, Iowa

Armando S. Sadron
Bolivia

Connie Sarris
Sioux City, Iowa

Faye Shulkin
Sioux City, Iowa

Howard John Staber
Sioux City, Iowa

Jerrold Gordon Thacker
So. Sioux City, Nebr.

Doris Junesse Thompson
Woodbine, Iowa

Larry J. Toner
Grand Island, Nebr.

Dean Lindsay Tudehope
Sioux City, Iowa

Donald Neison Van Der Weide
Orange City, Iowa

Terry James Walker, Jr.
Sioux City, Iowa

Marlys Mae Watson
Archer, Iowa

Paul Kenneth Williams
Milford, Iowa

Ken Zeising
Sioux City, Iowa

S
E
N
I
O
R
S



Left to right: Vice President, Leo Juffer;
Secretary, Raye Cottington;
Treasurer, Pat Thacker;
President, Ray Clark.



Gilbert Louis Ducommun
Cleghorn, Iowa

Sally Ann Ebel
Sioux City, Iowa

Barbara Joy Edwards
Sioux City, Iowa

Ray Emerson Foster
So. Sioux City, Nebr.

James Russel Frey
Sioux City, Iowa

Kathryn Faye Fristad
LeMars, Iowa

Douglas Gene Gibbs
Honolulu, Hawaii

John Hantla
Sioux City, Iowa

Curtiss Hayes
Sioux City, Iowa

Georgia Kay Hix
Odebolt, Iowa

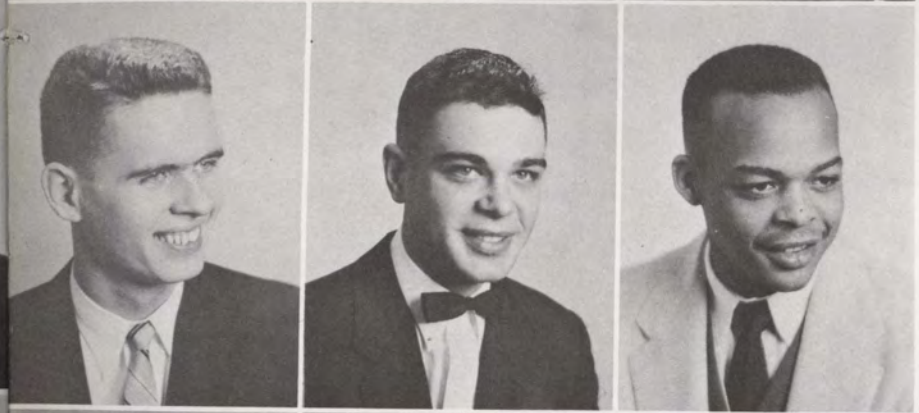
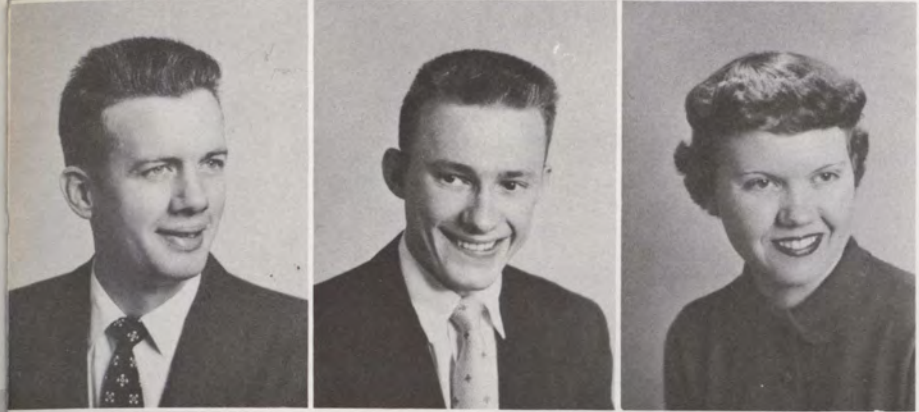
Mary Ann Hoffman
Akron, Iowa

Conrad Hove
Sioux City, Iowa

Gerald Huldeen
Odebolt, Iowa

Beverly June Johnson
Rockwell City, Iowa

Shelby Corzine Johnstone
Sioux City, Iowa



Jean Adele Arndt
Blencoe, Iowa

Denver Dick Birkhofer
Schaller, Iowa

Burleigh Ernest Boldt
Calumet, Iowa

Betty May Borchers
Sioux City, Iowa

Robert Lee Buckley
Sac City, Iowa

Diana Raye Cottington
Stratford, Iowa

Don S. Croston
Sioux City, Iowa

Alice Mae Denker
Denison, Iowa

Gordon LeRoy Dodge
Hartley, Iowa

J
U
N
I
O
R
S

Leo Deane Juffer
Ireton, Iowa

Donna Kargas
Garner, Iowa

Wassileh Khoury
Jordan

Paul Kirkegaard
Sioux City, Iowa

Adele Kirkpatrick
Sioux City, Iowa

Adrian Christian Larson
Sioux City, Iowa

Cesar Lay
Panama

Nancy Jane Lippert
Sioux City, Iowa

Mabel Helen Long
Akron, Iowa

Robert J. Luse
Sioux City, Iowa

George William McDonald
Sioux City, Iowa

Peter Grant Macfarlane
Sioux City, Iowa

Marquette E. Mason
St. Louis, Missouri

Roger E. Moore
Sioux City, Iowa

Mary Elisabeth Musselman
Sioux City, Iowa



J
U
N
I
O
R
S

Emmitt William Phillips
Sioux City, Iowa

Douglas Pommrehn
Williams, Iowa

Robert James Reimers
Inwood, Iowa

Marilyn M. Reynders
Sioux City, Iowa

Elsie Marian Shultz
Buffalo, Wyoming

Donald Norbert Smith
Decatur, Nebr.

Gerald Stein
Sioux City, Iowa

Betty Bernece Sikes
Albert Lea, Minn.

Don Richard Templeton
Bagley, Iowa

Patricia Annette Thacker
So. Sioux City, Nebr.

John Hayden Thomas
Wallingford, Iowa

David Grady Van Vleet
Sioux City, Iowa

Don Lloyd Wigersma
New York City, N. Y.

Robert Wilson
Lawton, Iowa

Roger H. Winter
Buffalo Center, Iowa

JUNIORS

Doris Yungschlager
Calumet, Iowa

Lucy Seiko Yoshioka
Hilo, Hawaii

Roger Lansing Benson
Adrian, Minn.



SOPHOMORES



Left to right: Treasurer, Tom Canfield; Vice President, Kermit Peters; Secretary, Pat Morehead; President, Dick Metcalf.

SOPHOMORES

Ramon Acena
Guatemala City

Ilene Joy Anderson
Mondamin, Iowa

M. Jane Anderson
Sioux City, Iowa

Richard L. Anshutz
Sioux City, Iowa

Bill Duane Baber
Dow City, Iowa

Rachel Ann Bailey
Royal, Iowa

Frank Eugene Baker
Sioux City, Iowa

Marjorie Kathleen Bauer
Sioux City, Iowa

Duane Allen Baugous
Sioux City, Iowa

Catherine Jane Beck
Detroit, Michigan

Bill Dean Beemer
Lakota, Iowa

Robert Keith Beyer
Sioux City, Iowa

Grady Lee Bluford
So. Sioux City, Nebr.

James Edward Bobier
So. Sioux City, Nebr.

Rita Adell Brown
Adaza, Iowa



SOPHOMORES

Thomas Wilder Canfield
Boone, Iowa

JoAnna Mae Challman
Galva, Iowa

Willis Martin Cleveland
Sioux City, Iowa

James Marvin Cornils
Sioux City, Iowa

Karen Gay Davies
Salix, Iowa

Roger Leon Dean
Sioux City, Iowa

William Donai DeJong
Orange City, Iowa

Douglas Sackett Delzell
Sioux City, Iowa

Douglas Ralph Dimick
Sioux City, Iowa

Carolyn Jean Ebel
Sioux City, Iowa

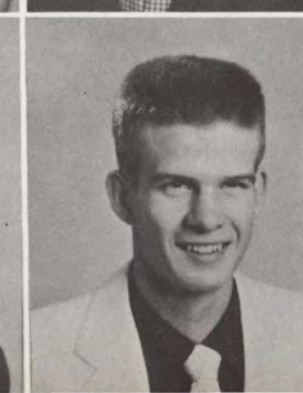
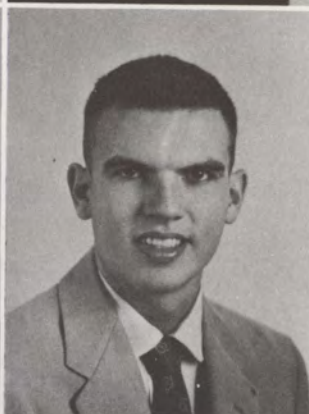
Orlynn Ebel
Faullina, Iowa

Gordon Starr Fairchild
Sioux Rapids, Iowa

Mary Ann Elizabeth Galusha
Sioux City, Iowa

Richard Charles Gasser
Sioux City, Iowa

Gerald Allen Gerber
Holstein, Iowa



Beverly Ann Giehm
Sioux City, Iowa

Louise K. Gleason
Audubon, Iowa

Barbara Ellen Goodwin
Sioux City, Iowa

Delmer Lester Graf
Houghton, So. Dak.

Jeanne LaVonne Graham
Sioux City, Iowa

Joan Doris Griesse
Alvord, Iowa

John William Groethe
Elk Point, So. Dak.

Dorothy Grace Guyett
Woodbine, Iowa

Marilyn Haddock
Hornick, Iowa

Jack A. Hall
Rockwell City, Iowa

Richard Hartnett
Sioux City, Iowa

Donald Hasbrook
Estherville, Iowa

Opal Juanita Hayes
Sioux City, Iowa

Joanne Elsie Hicklin
Sioux City, Iowa

Don Hickok
Lohrville, Iowa

SOPHOMORES

Ellen Marie Huster
Sac City, Iowa

Gretchen Carol Jensen
Sioux City, Iowa

Dixie Lou Johnson
Sioux City, Iowa

Geraldine Cole Johnson
Selma, Alabama

Norman Gene Johnson
Sioux City, Iowa

Merilynn Ruth Jordan
Plankinton, So. Dak.

Margaret Anne Jorstad
Sioux City, Iowa

Keith Kading
Sioux City, Iowa

Sharon Kaveney
Sioux City, Iowa

Shirley Kemrte
Sioux City, Iowa

Richard Koch
Sioux City, Iowa

John David Kopecky
Sioux City, Iowa

Ronald Krause
Dakota City, Nebr.

Thomas Dean Kronoveter
Pipestone, Minn.

David Elvin Leonard
Holstein, Iowa



Barbara Jean Lewis
Sioux City, Iowa

Beverly Ann Lindberg
Slayton, Minnesota

William Woon Lo
China

Judith Diane Lockard
Sioux City, Iowa

Martha Ann Matson
Clarion, Iowa

Richard Warren Metcalf
Kingsley, Iowa

Sharon Elaine Metz
Sutherland, Iowa

Sharon Lee Montgomery
Sioux City, Iowa

Patricia Jean Morehead
Akron, Iowa

David Knapp Nelson
Akron, Iowa

Letha Margaret Nevings
Sioux City, Iowa

Michael O'Donoghue
Sioux City, Iowa

Janice Olson
Edna, Iowa

Xenia Alicia Perez
Panama City, Panama

Kermit Peters
Remsen, Iowa

SOPHOMORES

Judith Ann Pinkerton
Quimby, Iowa

Charles Poches, Jr.
Sioux City, Iowa

Donald Poppen
Alton, Iowa

Thomas James Priestman
Sioux City, Iowa

Ivan David Reed
Spencer, Iowa

Fred Shalom Ron
Israel

Wendell Lloyd Roth
Sioux City, Iowa

Nancy Ann Samuelson
Sioux City, Iowa

Donna Mae Sanders
Mapleton, Iowa

Marilyn Schellinger
Bronson, Iowa

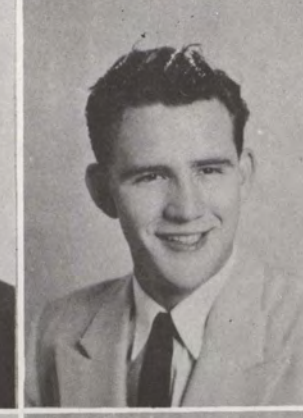
Joan Schroeder
Holstein, Iowa

Loretta Scoville
Mitchell, So. Dak.

Judith Faye Sellers
Rowan, Iowa

Mabel Samantha Stanley
Sioux City, Iowa

Jerry Lee Starkweather
Boyden, Iowa



Robert Kent Tiemens
Archer, Iowa

Donn David Vanderwicken
Sioux City, Iowa

P. Gordon Walter
Lohrville, Iowa

Beth Mary Weisensee
Sioux City, Iowa

Richard Allen Welding
Sioux City, Iowa

Duane Edward Wenham
Sioux City, Iowa

Richard Van Wenham
Sioux City, Iowa

Patricia L. Wenzel
Sioux City, Iowa

Norma Jean Wherry
Jefferson, Iowa

Joanne Carolyn Wilson
Sac City, Iowa

SOPHOMORES



Left to right: Vice President, Dan Nuttle;

Sec.-Treasurer, Macel Martin;

President, Boyd Simmons.



Fred Lynn Asher
Woodbine, Iowa

Russell LeRoy Bartels
So. Sioux City, Nebr.

Edgar John Bedell
LeMars, Iowa

David Hilbert Bogue
Beresford, So. Dak.

Roger Dean Bojens
Hartley, Iowa

Thomas Ray Bonderman
Melvin, Iowa

Jo Ann Bullard
Jefferson, Iowa

Tom Collins Cale
Sioux City, Iowa

Beverly Jean Calvert
Sioux City, Iowa

Delos Duane Corderman
Sac City, Iowa

Shirley Roberta Cox
Ayrshire, Iowa

Buddy Gene Crewdson
Sioux City, Iowa

Roger James Cunningham
Spirit Lake, Iowa

Barbara Jean DeWitt
Sioux City, Iowa

Dorothy Ann Drommer
Sioux City, Iowa

F
R
E
S
H
M
A
N

F
R
E
S
H
M
A
N

Shirley Ann Aalseth
Sergeant Bluff, Iowa

Scott C. Adams
Armstrong, Iowa

Aura Noemi Aguirre
Panama

Phyllis Faye Ahrenstorff
Lake Park, Iowa

Kenneth Duane Anderson
Kingsley, Iowa

Donald Ray Archer
Rockwell City, Iowa

Shirley Jean Arndt
Hinton, Iowa

Lorna Lu Arneson
Sioux City, Iowa

Joyce Elaine Arnold
Newell, Iowa



F
R
E
S
H
M
A
N

Eugene Dymkowski
Bayonne, New Jersey

Dorothy Elaine Ehlers
Arcadia, Iowa

Charles F. Ellison
Hinton, Iowa

Philip Elrod
Battle Creek, Iowa

Janice L. Fleming
Blair, Neb.

Virginia Elaine Forsberg
Odebolt, Iowa

Gordon Fountain
Sloan, Iowa

Janet Lou Fouts
Pisgah, Iowa

Darlene Froehlich
Cleghorn, Iowa

Willard M. Goeden
Sioux City, Iowa

David Eugene Goodrich
Sioux City, Iowa

Jean Marie Gould
Sioux City, Iowa

Margaret Elizabeth Grant
Spirit Lake, Iowa

Judith Ann Grau
Sioux City, Iowa

Joy Ann Green
Portsmouth, Iowa



Russell Charles Greenlee
Sioux City, Iowa

Marvin Hambleton
Dayton, Iowa

Harlan Hanson
Graettinger, Iowa

Lawrence Hapke
Palatine, Illinois

William Hayden
Sioux City, Iowa

Sharon Rose Hayes
Sioux City, Iowa

Robert Hechtner
Ida Grove, Iowa

Marilyn Hennings
Menville, Iowa

Carol Joyce Hinde
Early, Iowa

Walter Hoffman
Akron, Iowa

Glen Houpt
Sioux City, Iowa

Donna Bea Inderwisch
Rock Rapids, Iowa

Paul Benjamin Jacobs
Sioux City, Iowa

Elizabeth J. Jensen
Harlan, Iowa

Marian Johnson
Akron, Iowa

F
R
E
S
H
M
A
N

F
R
E
S
H
M
A
N

Constance Louise Jones
Sioux City, Iowa

Jerold Neal Jones
Sutherland, Iowa

Jack Kempton
Sioux City, Iowa

Duane Eugene Kibby
Lohrville, Iowa

Marlys Kinnan
Lohrville, Iowa

Dixie Kirkhart
Fort Dodge, Iowa

Charlotte Klingensmith
Mound, Minnesota

Alice Kott
Sioux City, Iowa

Edgar Kourany
Ancon, Canal Zone

Oscar Kourany
Ancon, Canal Zone

Ward Wm. Kowalke
Sioux City, Iowa

James Herman LaPlante
Sioux City, Iowa

Cletus Dale Lauck
Rock Rapids, Iowa

Jacky Ann Leamer
Sioux City, Iowa

Carol Jean Lehnus
Rolfe, Iowa



Julie Ann Lester
Newton, Iowa

David Claire Lohr
Churdan, Iowa

Bruce Alan Lombard
Sioux City, Iowa

Shirley Jean McGee
Sioux City, Iowa

Robert James McIntire
Marcus, Iowa

Jerry McManis
Sioux City, Iowa

John Emmet Mackey
So. Sioux City, Nebr.

Clyde Jerry Magill
Jefferson, Iowa

Ronald LeRoy Maston
Sioux City, Iowa

Melvin Ladean Maynard
Smithland, Iowa

Donald Mac Meisner
So. Sioux City, Nebr.

Marilyn Menter
Sioux City, Iowa

D. Dianne Metz
Sutherland, Iowa

Mary Jane Miller
Sioux City, Iowa

N. Kay Mugge
Calumet, Iowa

F
R
E
S
H
M
A
N

**F
R
E
S
H
M
A
N**

John Harry Neir
Remsen, Iowa

Daniel Nuttle
Dexter, Michigan

John Garner Oakes
San Francisco, California

Orville Oaks
Sioux City, Iowa

Glenna Glee Page
Kingsley, Iowa

Barbara Jean Palmer
Sioux City, Iowa

James Richard Parkhill
Sioux City, Iowa

John Richard Parks
Sioux City, Iowa

Roy Peterson
Marcus, Iowa

Janice Primmer
Sioux City, Iowa

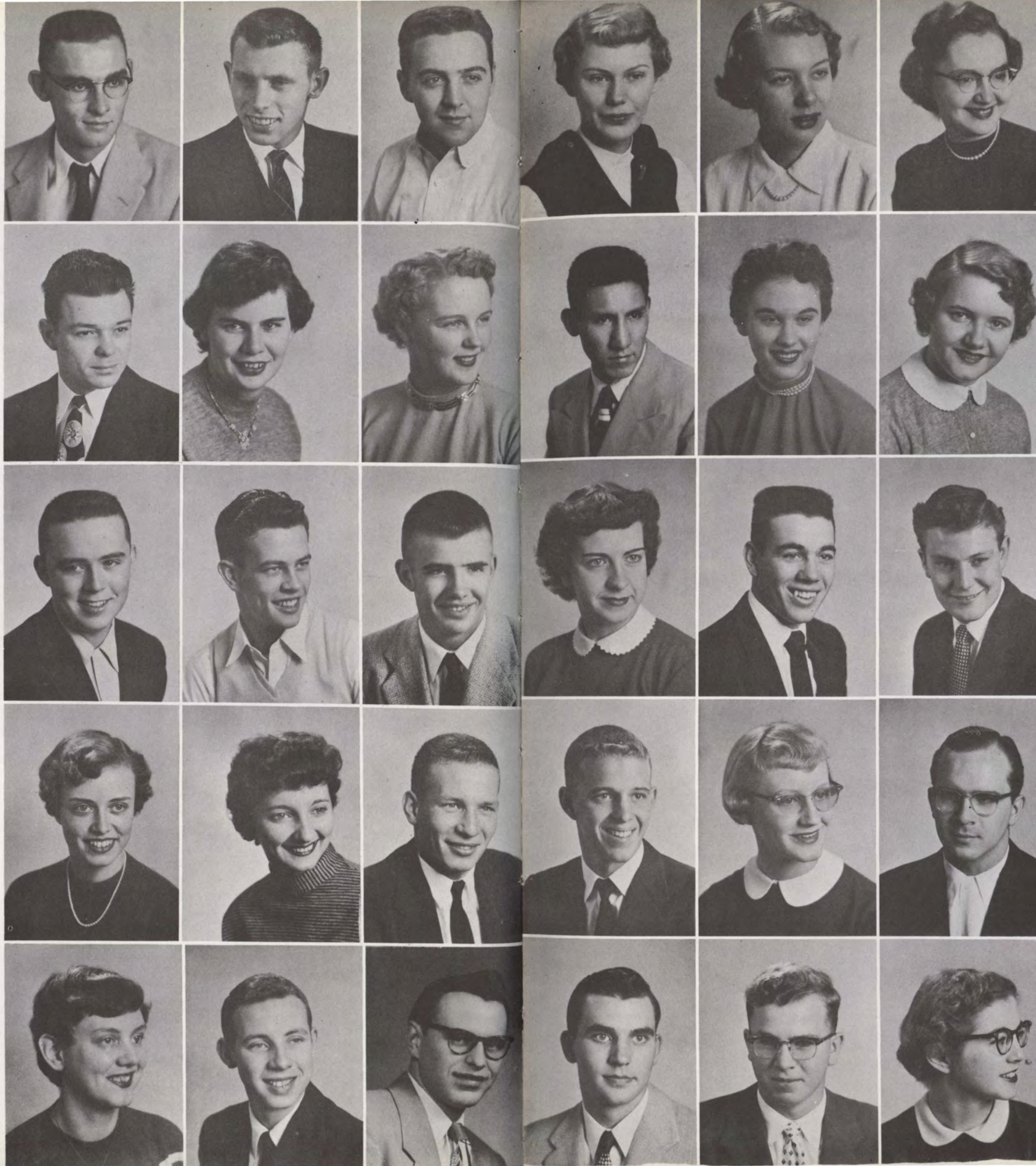
Mary Kaye Quackenbush
Onawa, Iowa

Robert Raymond Reynders
Sioux City, Iowa

Venona Louise Rock
Pierson, Iowa

Jack Russell Rodgers
Sioux City, Iowa

Ronald Raymond Roloff
Hartley, Iowa



Shirley Jean Rothman
Lawton, Iowa

Marjorie Ann Rowlands
Sioux City, Iowa

Joyce Arleen Runion
Dike, Iowa

Huga Sardon
Bolivia

Nancy Hall Sarff
Smithland, Iowa

Donna Mae Schirck
Carroll, Iowa

LaVonne Schroeder
Inwood, Iowa

David Schuldt
Sheldon, Iowa

Robert Emmett Sheets
Britt, Iowa

Keith Shellhammer
Sioux City, Iowa

Sondra Sue Shields
Dickens, Iowa

Jack Shively
Sioux City, Iowa

Boyd Glenn Simons
Larrabee, Iowa

Robert Glen Slawson
Lehigh, Iowa

Janice Rae Smith
Sloan, Iowa

**F
R
E
S
H
M
A
N**

**F
R
E
S
H
M
A
N**

Jerome Malcolm Smith
Minneapolis, Minn.

Patricia M. Smith
Sioux City, Iowa

Terry Rose Smith
Sioux City, Iowa

Carlton Soelberg, Jr.
Sioux City, Iowa

Orlin Dwayne Solberg
Ringsted, Iowa

Ronald Bruce Sparks
Newton, Iowa

Marilyn Jean Springer
Cleghorn, Iowa

Blaine Willard Sprout
Cylinder, Iowa

Richard William Stachour
Sibley, Iowa

Robert Jerry Steck
Marcus, Iowa

Richard Thomas Steimke
Larrabee, Iowa

Keith Alan Tandy
Reinbeck, Iowa

Janet Fay Thayer
Storm Lake, Iowa

Harry E. Turner
Sioux City, Iowa

Nancy Lee Waggoner
Arthur, Iowa



Hugh Joseph Waldier
Chicago, Ill.

Frederick Lee Warren
Emerson, Nebr.

D. Kent Watkins
Sioux City, Iowa

Robert Paul Weekly
Sioux City, Iowa

Donna Lee Westre
Chicago, Illinois

Caryl Elaine Whitney
Sloan, Iowa

Richard Owen Wikert
Graettinger, Iowa

Rodney Ray Williams
Sibley, Iowa

Ruth Alice Williams
Milford, Iowa

Robert George Wilson
Marcus, Iowa

William Dean Wing
Rockwell City, Iowa

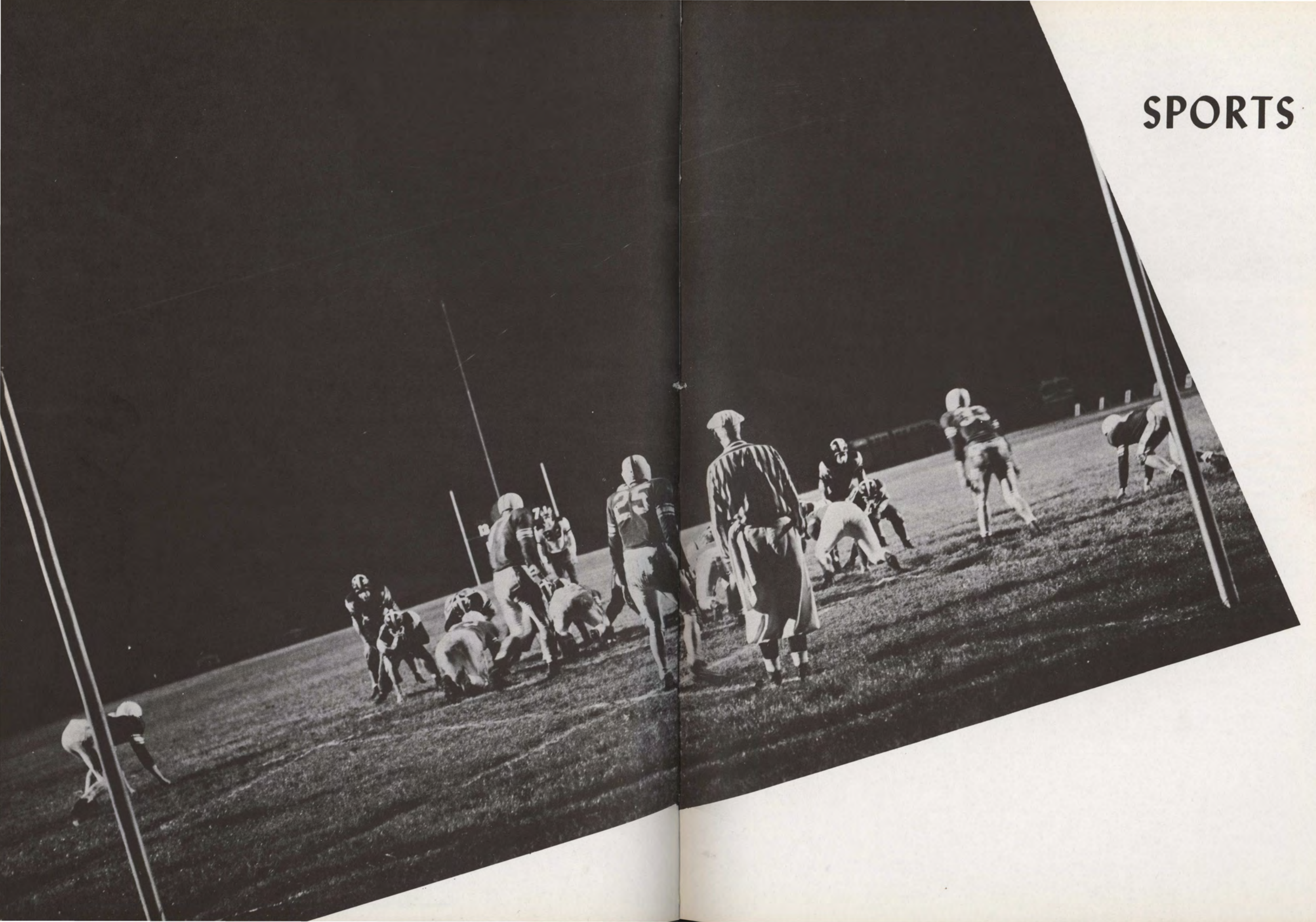
Martha Winkler
Sac City, Iowa

Dorothy Joy Wubbena
Ashton, Iowa

Eugene Louie Wulf
Denison, Iowa

**F
R
E
S
H
M
E
N**

SPORTS





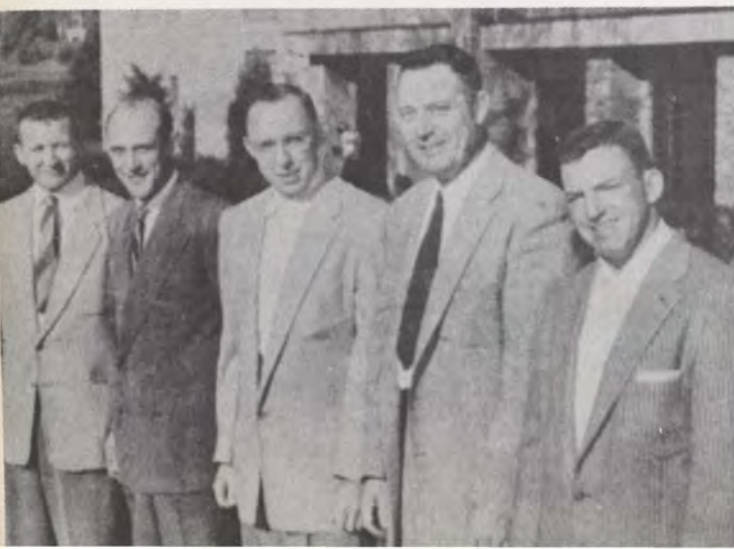
1st row: Cliff Hinrichs, Connie Hove, Vern Wyland, Bill Holsclaw, Ike Isaacson, Dutch Bryan, Chuck Phoenix, Bob Puff, Darold Puff. 2nd row: Jim Welton, Boyd Blakesley, Bob Miller, Roger Gohring, Buck Miller, Paul Kirkegaard, Larry Toner, George Nassif, Al Lindgren. 3rd row: Mgr. Earl Logan, Jim Smith, Clarence Mounts, Ron Fredricksen, Dick Kjos, Bob Buckley, Bob Meinhardt, Neal Gohring, Ray Clark, Richard Hartnett, Maurice Getting, Coach Asprey, Coach Drouillard.

1954 Varsity Football Schedule

Morningside..... 6	Midwestern U.....28
Morningside..... 0	Omaha U.....45
Morningside.....28	North Dakota U....21
Morningside.....27	North Dakota St....41
Morningside.....26	Augustana 0
Morningside.....41	South Dakota U.... 7
Morningside.....20	Iowa St. Teachers..12
Morningside.....39	South Dakota St....24

Conference Champions!

Coaches Fleming, Asprey, Drouillard,
Buckingham, Van Vleet



Co-Captain
Bill Holsclaw

Co-Captain
Ike Isaacson



For the first time in 31 years, the "underdog" Morningside Maroons swept to a conference championship—one which admittedly had to be shared with South Dakota State but which still lost none of its sweetness, nevertheless. It is interesting to note here that Morningside is one of the smaller schools in the league, out-ranked by Iowa State Teachers College nearly four to one and North Dakota University, three to one.

The season opened with more of a prayer than promise. The first foe, Midwestern University of Wichita Falls, Texas, showed no respect as they dealt the Maroons a 28 to 6 lashing. Omaha next took measure, tomahawking Morningside, 45-0, by capitalizing on four fumbles and two passes to set up scoring opportunities. However word from the Morningside camp was disappointment, not discouragement.

North Dakota's encounter saw the M-men pick up impetus as the Sioux were highly surprised, 28-21. Tackling and blocking were sharp with Bryan and B. Miller leading the offense.

Morningside's machine was stalled by North Dakota State next when sloppiness could not offset the statistics. Buck Miller's passing was one bright spot, bewildering the Bison on three aerial touchdowns.

"Morningside beat the pants off 'em" was the general comment after the Maroons smashed Augustana, 26 to 0, at Sioux Falls. The statement can be taken literally—immediately following the game, the Augie student council president relinquished his "better half" to Morningside student council advocate Wally Krone as a part of an annual tradition between between the two schools on Viking Days. Darold Puff's return to the lineup spelled out two touchdowns while Wyland and Hinrichs scored the remaining counters.

Homecoming's crowd of 7,000 was thoroughly delighted as the Morningsiders walloped South Dakota University 41-7. While the "Sodaks" could gain only five first downs and sixty-eight total yards, our men were rolling up 16 first downs and 312 total offense yardage. The two Millers—Bob and Buck—were prominent for the victors, backed up defensively by Kirkegaard, Getting, and Bob Puff.

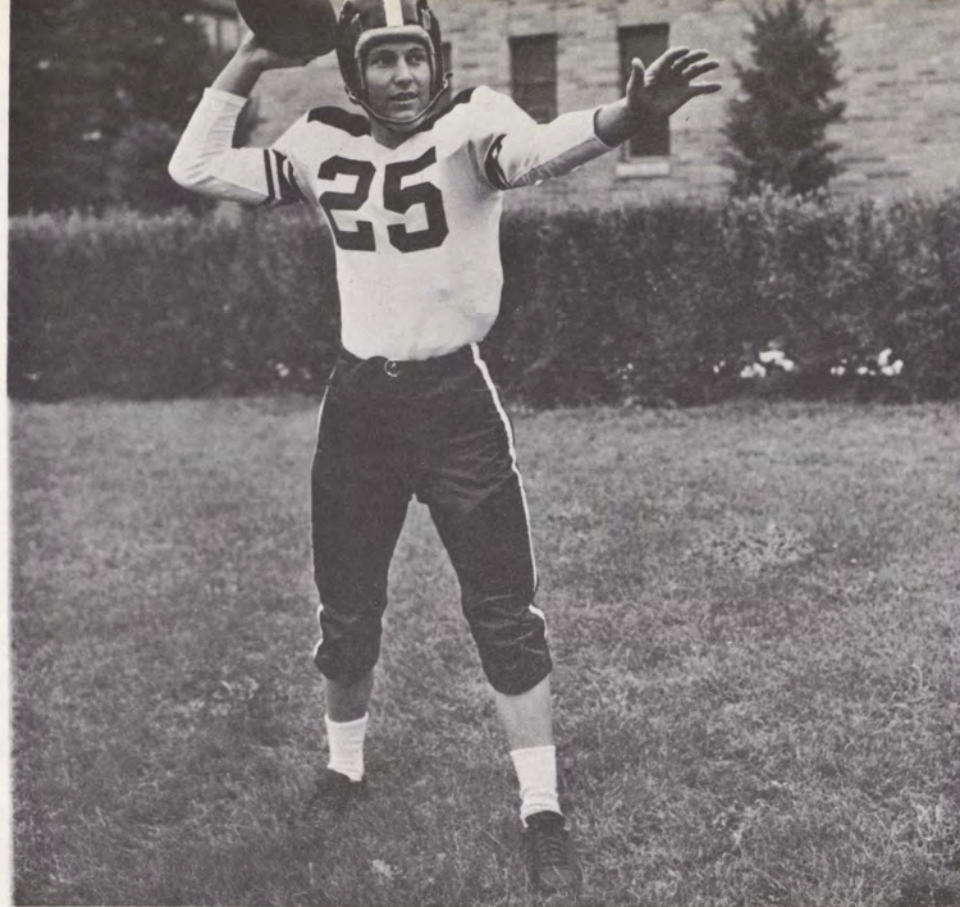
Upset-minded Morningside again provided an astonished crowd with a terrifically well-played game, upending Iowa State Teachers College, 20-12. Buck Miller led the Maroons to their first win from Cedar Falls since 1938 by throwing completions of 77 and 55 yards to Bob Miller and Red Getting respectively. The game was easily one of the best seen in Sioux City for quite some time as line play perfectly coordinated with backfield to give the aroused rooting section something to cheer about.

Thus far, the Maroons had won four games and lost one in conference play. Their next foe, South Dakota State, had to be beaten to gain even a cut of the conference pie.

That dreamland was reached when the suburbanites from Sioux City ground and sweated their way over a theoretical highly-superior South Dakota State team. Thus a tie was assured. Playing that game were six seniors of whom Coach Drouillard said: "Six of the finest men ever to graduate from Morningside—athletes and men all the way." These were Roger Gohring, Bill Holsclaw, Ike Isaacson, Bob Miller, Buck Miller, and Larry Toner. These men left a goal to which future aspiring football teams may well consider worth their while to duplicate.

Graduating Maroons
... Holsclaw, Isaacson, Gohring,
Bob Miller, Buck Miller, Toner ...





Dwaine "Buck" Miller
 Little All-American quarterback
 1st All-North Central Conference
 Conference Most Valuable Player
 Morningside Most Valuable Player



**Dick Clements Trophy
 Most Improved Player
 Cliff Hinrichs**



Kermit Isaacson
 All-Conference



Darold Puff
 All-Conference



Roger Gohring
 All-Conference

1954 Lettermen

Cliff Hinrichs
 Connie Hove
 Vernon Wyland
 Bill Holsclaw
 Kermit Isaacson
 Lyle Bryan
 Chuck Phenix
 Bob Puff
 Darold Puff
 Jim Welton
 Bob Miller
 Roger Gohring
 Buck Miller
 Paul Kirkegaard
 Larry Toner
 George Nassif
 Al Lindgren
 Jim Smith
 Clarence Mounts
 Ron Fredricksen
 Dick Kjos
 Bob Buckley
 Bob Meinhardt
 Neal Gohring
 Ray Clark
 Richard Hartnett
 Maurice Getting

Clayt Drouillard



Head Football Coach

1954 Lettermen

Cliff Hinrichs
 Connie Hove
 Vernon Wyland
 Bill Holsclaw
 Kermit Isaacson
 Lyle Bryan
 Chuck Phenix
 Bob Puff
 Darold Puff
 Jim Welton
 Bob Miller
 Roger Gohring
 Buck Miller
 Paul Kirkegaard
 Larry Toner
 George Nassif
 Al Lindgren
 Jim Smith
 Clarence Mounts
 Ron Fredricksen
 Dick Kjos
 Bob Buckley
 Bob Meinhardt
 Neal Gohring
 Ray Clark
 Richard Hartnett
 Maurice Getting





1st row: Rod Larson, Delaine Koch, Claude Larison, Bob Jassey, Bob Fladmark, Jim Hindman, Ronald Mohler, Bob Reynders, Jerry Freeman. 2nd row: Duane Ebert, Euane Baugous, Jerry Maghill, Bob White, Jim Wegs, Frank Mahan, Vince Arioso, Bill Jackson, Dick Haley, Roger Sherman. 3rd row: Fred Warren, Gene Olsen, Gene Wulf, Terry Lewis, Jerry Jones, Dave Bogue, Al Olsen, Larry Johnson, John Neir, Carlton Tronvold, Larry Hapke, Ray Harris, Coach Mike Fleming.

A possible preview for the seasons to come was enacted this year as the freshman football team ended a short but highly successful season. The only blemish on the record was a 6 to 6 tie with South Dakota University's Pups.

The other two games were Westmar's junior varsity and the Augustana frosh. The scores of these games show that the work and time spent by coaches Mike Fleming and Dave VanVleet with the 35 men were well worth the effort.

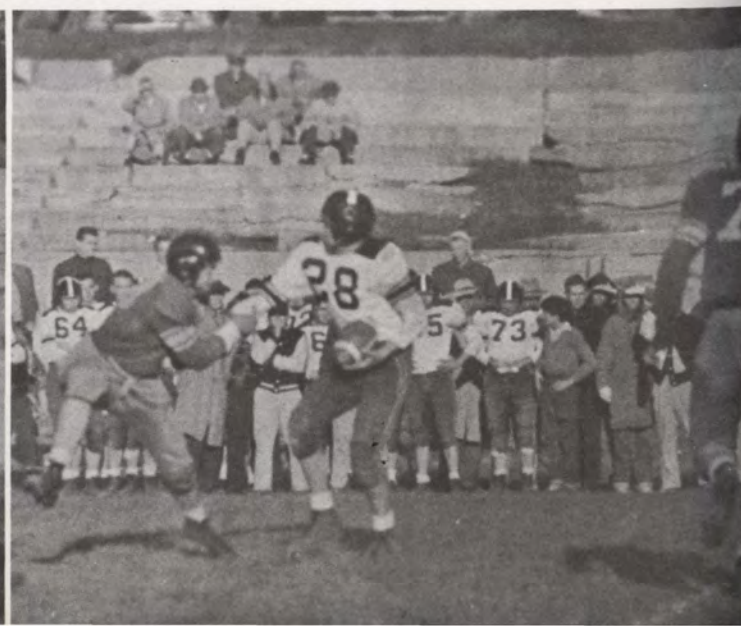
The development of separate units gave everyone a good opportunity to see action. Both units employed heavy lines and hard charging backs.

With the end of a successful season also came the traditional "shower" for both coaches.

1954 Freshman Football Schedule

M'Side Frosh--14	Westmar Junior Varsity-- 0
M'Side Frosh--27	Augustana Freshmen---13
M'Side Frosh-- 6	South Dakota Freshmen 6

Won 2 Lost 0 Tied 1





Don Poppen, Ken DeVries, Bill Holsclaw, Paul Noble, Wes Boldt, Marquette Mason, Jerry Starkweather, Doug Delzell, Keith Warner, Don Verdoorn, Ed Brunsting, Bob Meyer, Don Vanderweide, Bill Barrett, Wilbur Long, Al Brunsting; Al Buckingham, coach.



Al Buckingham
Varsity Coach



Clayt Drouillard
Freshman Coach

BASKETBALL

1955 Schedule

Morningside	65	Westmar	63
Morningside	79	Creighton	75
Morningside	75	Wartburg	79
Morningside	60	Cornell	84
Morningside	80	St. Ambrose	77
Morningside	73	Westmar	78
Morningside	64	Wayne St. Teach.	74
Morningside	77	North Dakota U	65
Morningside	71	Iowa St. Teach.	78
Morningside	57	South Dakota St.	74
Morningside	71	North Dakota U	82
Morningside	65	South Dakota St.	85
Morningside	80	North Dakota St.	91
Morningside	80	Augustana	60
Morningside	83	Iowa St. Teach.	74
Morningside	70	North Dakota St.	88
Morningside	77	North Dakota U	90
Morningside	75	Omaha U	84
Morningside	84	South Dakota U	65
Morningside	69	South Dakota St.	67
Morningside	99	Augustana	61
Morningside	71	Iowa St. Teach.	103
Morningside	66	South Dakota U	47



Don Verdoorn
Most Valuable Player



Captain
Don Vanderweide



Most Valuable Player
Al Brunsting



Graduating Maroons

Allee gym's scoring record was shattered, the team flew to North Dakota, and the promise of excellent future seasons was shown throughout this year by a number of outstanding sophomores and juniors. These and many other numerous firsts headlined the "varied" 1954-55 basketball slate.

Ray Knauer's old 41-point effort was erased early in the season by a little guard from Creighton University, Ed Cole, who scored 47 points; that game, however, was won by the Maroons in a thrilling overtime scramble. Other similar games were enacted throughout the season to give the loyal supporters a thorough feeling of satisfaction.

For the first time since 1949 the North Central conference tournament resumed play and Morningside was chosen for the site. In that tournament the Al Brunsting-led Maroons showed the conference that, even though experience was lacking, the will to win surely was not.

Another first was scored when the Maroons made the North Dakota trip by airplane. Although just barely finishing out of the first division Morningside provided the fans with exciting and well-played ball games.





Jerry Starkweather



Al Brunsting



Bob Meyer



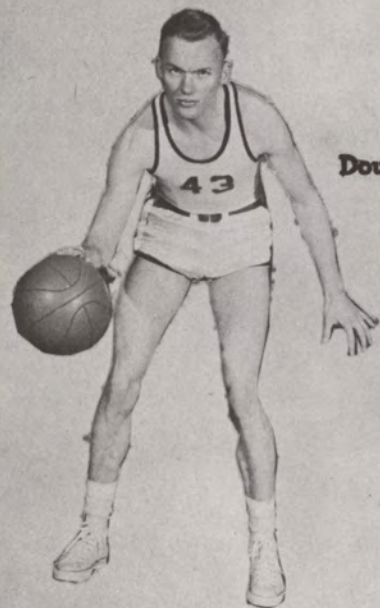
Doug Delzell



Ed Brunsting



Marquette Mason



Don Verdoorn



Wilbur Long



Don Poppen



Keith Warner



Bill Barrett



Don Vanderweide



Paul Noble



Ken DeVries



Wes Boldt



Bill Holsclaw



1st row: Denver Birkhofer, Daylor Wade, Doug Dimick, Ed Kourany, Oscar Kourany, Wed Boldt, Tom Williams. 2nd row: Coach Duane Zimmer, Darrell Meier, Larry Shuler, Dan Nuttle, Ed Guinane, Jim Weston, Howard Koth, Don Poppen, Connie Hove.

1955 Tennis Schedule

Westmar	-----	There
Omaha U	-----	There
Augustana	-----	Here
Westmar	-----	Here
Wayne St. Teach.	-----	There
Westmar	-----	There
Wayne St. Teach.	-----	Here
Augustana	-----	There
Conference Meet	-----	There

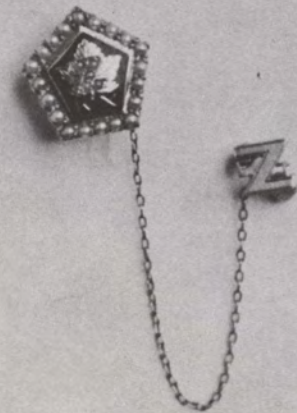
1955 Baseball Schedule

Omaha U	-----	There
Omaha U	-----	Here
South Dakota U	-----	Here
South Dakota St.	-----	Here
South Dakota St.	-----	There
South Dakota U	-----	There
Westmar	-----	There
Buena Vista	-----	Here
Westmar	-----	Here
Buena Vista	-----	There

Dick Gasser, Kent Watkins, Fred Zimmat,
Hugo Sardon, Bill Lo, Amando Sardon



Fraternities Sororities





Kermit Isaacson Paul Jacobs Doug Jones Curt Lovelace Don Templeton Duane Wenham

Gamma Iota Alpha

Back row: Wendel Roth, Tom Rose, Cliff Kennedy, Phil McMahon, Musa Nasir, Vince McMahon.
 Second row: Dick Pederson, Bob Ruchensky, Isa Majaj, Don Templeton, Lee Dallas, Tom Wold.
 Front row: John Wold, Paul Jacobs, Bob Larson, Norm Falk, Bob Moore, Duane Wenham.



1st Semester

President.....Tom Rose
 Vice President.....Cliff Kennedy
 Secretary.....Bob Larson
 Treasurer.....Curt Lovelace

2nd Semester

President.....John Wold
 Vice President.....Bob Larson
 Secretary.....Tom Wold
 Treasurer.....Tom Rose



Gamma Sweetheart
 Doris Thompson





Louise Gleason
Gerry Johnson
Sonya Mackintosh

Georgia Hix
Merilynn Jordan
Zenia Perez
Doris Thompson

Ellen Huster
Wassileh Khoury
Joan Schroeder
Joanne Wilson

Bev Johnson
Mabel Long
Loretta Scoville

Alpha Sigma Gamma

1st Semester

President.....Doris Thompson
Vice President.....Bev Johnson
Rec. Secretary.....Georgia Hix
Corr. Secretary.....Joanne Wilson
Treasurer.....Merilynn Jordan

2nd Semester

President.....Doris Thompson
Vice President.....Mabel Long
Rec. Secretary.....Bev Johnson
Corr. Secretary.....Sonya Mackintosh
Treasurer.....Merilynn Jordan



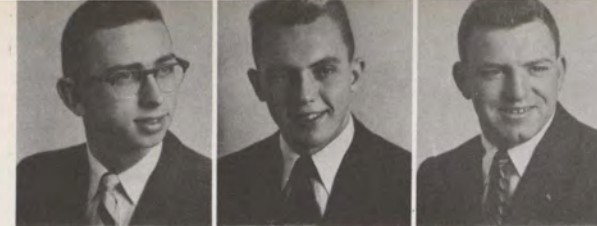
Gamma of the Year
Don Templeton





S i g m a P h i E p s i l o n

Don Archer	Bill Beemer	Bob Buckley	Denver Birkhofer	Burleigh Boldt	Wes Boldt
Jim Cornils	Don Croston	Doug Gibbs	Doug Delzell	Gordon Dodge	Gene Dymkowski
Roger Gohring	Russ Greenlee	Pete Macfarlane	Monte Gruett	Keith Kading	Earl Logan
Bob Miller	Buck Miller	Emmitt Phillips	Bob Motter	Dan Nuttle	Duane Oleson
Don Poppen	Boy Reynders	Jerry Starkweather	Bob Sheets	Keith Shellhammer	Boyd Simons
Larry Toner	Dean Tudehope	Don Wigersma	Harry Turner	Dave VanVleet	Fred Warren



Dick Welding Roger Winter Gene Wulf

1st Semester

President.....Bob Miller
 Vice President.....Dean Tudehope
 Comptroller.....Duane Oleson
 Historian.....Dick Welding
 Secretary.....Wes Boldt
 Rushing Chairman.....Buck Miller

2nd Semester

President.....Dave Van Vleet
 Vice President.....Don Poppen
 Comptroller.....Don Archer
 Historian.....Pete Macfarlane
 Secretary.....Bill Beemer
 Rushing Chairman.....Keith Warner



Sig Ep Sweetheart

Amy Gohring





Jane Anderson
Sally Ebel
Amy Gohring

Margie Bauer
Barb Edwards
Barb Goodwin
Adele Kirkpatrick

Betty Borchers
Betty Erickson
Margaret Jorstad
Nancy Samuelson

Carolyn Ebel
Mary Ann Galusha
Donna Kargas

K a p p a Z e t a C h i

1st Semester

President.....Amy Gohring
Vice President.....Nancy Lehan
Treasurer.....Betty Erickson
Recording Secretary.....Norma Peterson
Corresponding Secretary.....Adele Kirkpatrick

2nd Semester

President.....Nancy Lehan
Vice President.....Betty Borchers
Treasurer.....Betty Erickson
Recording Secretary.....Margie Bauer
Corresponding Secretary.....Jane Anderson



Sig Ep Knight
Roger Gohring





T a u K a p p a E p s i l o n

Frank Baker	Roger Benson	Bob Beyers	Grady Blueford	Bob Bostrom	Tom Canfield
Bud Crewdson	Roger Cunningham	Bill De Jong	Gordon Fountain	Gil Ducommun	Richard Gasser
Dave Goodrich	Tom Hackney	Jack Hall	Bob Hildreth	John Hantla	Lee Hoffman
Shelby Johnstone	Leo Juffer	Dick Koch	Jim La Plante	Wally Krone	Bill Lo
Bob Luse	George McDonald	Dick Metcalf	Gene Persinger	Don Palmer	Kermit Peters
Roy Peterson	Jack Pommrehn	Bob Tiemens	Kent Watkins	Terry Walker	Richard Wenham



Robert Wilson Bill Wing Ken Zeising

	1st Semester	2nd Semester
President.....	Ken Zeising	Ken Zeising
Vice President.....	Wally Krone	Jack Pommrehn
Recording Secretary.....	Terry Walker	Bud Crewdson
Corresponding Secretary.....	Leo Juffer	Kent Watkins
Treasurer.....	Dick Metcalf	Bob Hildreth



"Teke" Sweetheart
Beverly Glehm



K a p p a P i A l p h a



Jean Arndt
Bev Giehm
Gretchen Jensen
Joanne Preul
Pat Thacker

Rachel Bailey
Dorothy Guyett
Dixie Johnson
Janice Primmer
Marlys Watson

JoAnna Challman
Ruth Hantla
Judy Lockard
Connie Sarris
Beth Weisensee

Raye Cottington
Mary Ann Hoffman
Pat Morehead
Elsie Shultz
Lucy Yoshioka

1st Semester

President.....Connie Sarris
Vice President.....Beth Weisensee
Rec. Secretary.....Raye Cottington
Corr. Secretary.....Joanne Preul
Treasurer.....Pat Thacker

2nd Semester

President.....Connie Sarris
Vice President.....Lucy Yoshioka
Rec. Secretary.....Rachel Bailey
Corr. Secretary.....Gretchen Jensen
Treasurer.....Beverly Giehm



"Teke" of the year
Terry Walker





ORGANIZATIONS



W. S. G. A.

Patricia Morehead

Donna Sanders

Elsie Shultz

Doris Thompson

Beverly Ann Lindberg

Elizabeth Jensen

Janice Olson

Venona Rock

Beverly Johnson

JoAnna Challman

Joanne Wilson



Home Ec Club

M. Club

Standing, left to right: Bill Holsclaw, Kermit Isaacson, Bob Miller, Bob Motter, Buck Miller, Don Verdoorn, Wilbur Long, Don Van Der Weide, Al Brunsting, Clarence Mounts, Vern Wyland, Gene Rehder, Dave Van Vleet. 1st row: Chuck Phenix, Larry Toner, Bob Meinhardt, Ray Clark, Ron Fredrickson, Lyle Bryan, Connie Hove, Bob Buckley, Neal Gohring, Al Lingren, Roger Gohring.

Agora

Betty Lou Erickson

Mabel Helen Long

Rosalie Ann Remmers

Doris Thompson

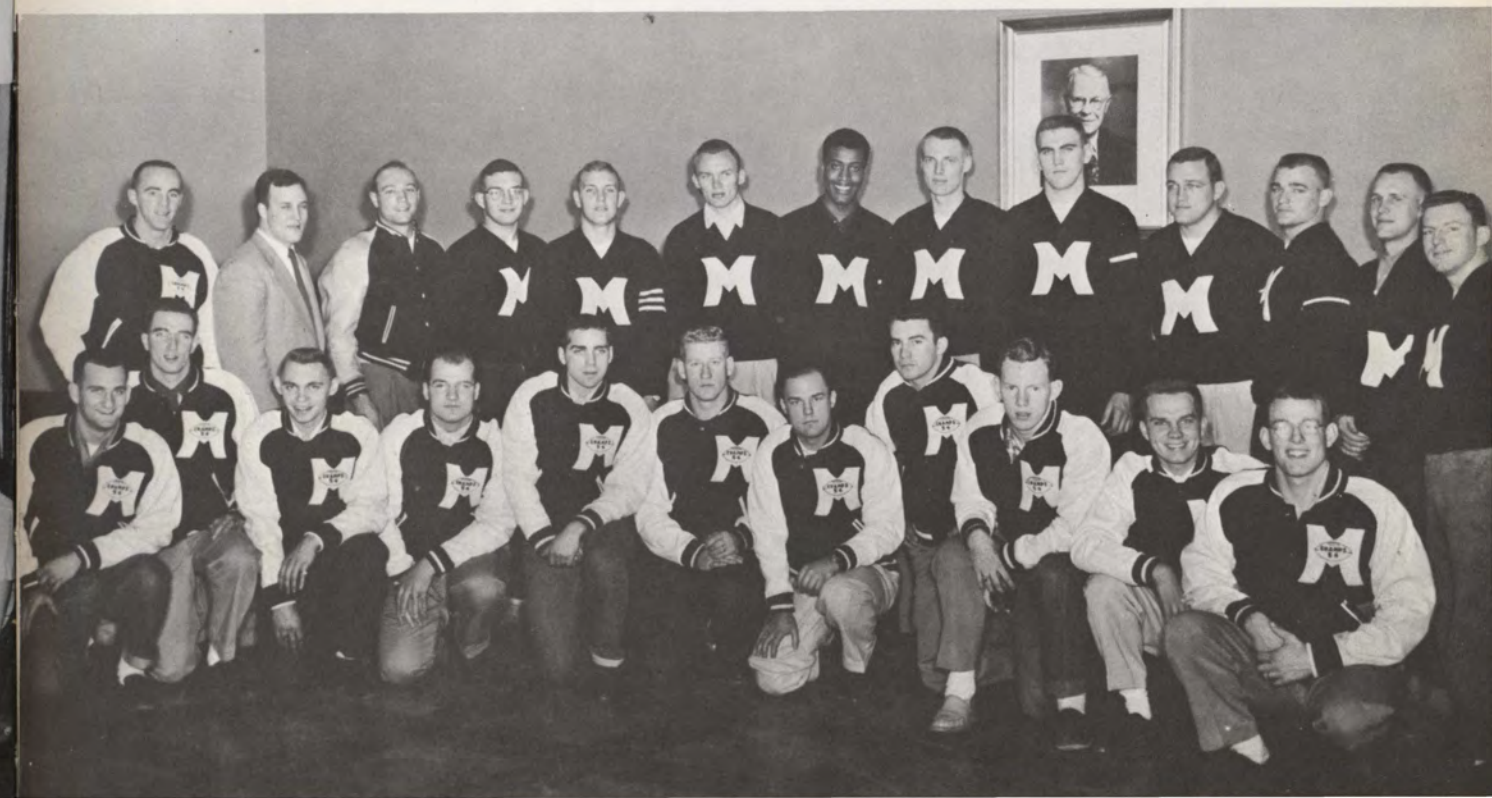
Barbara Goodwin

Beverly June Johnson

Elizabeth J. Jensen

Nancy C. Lehan

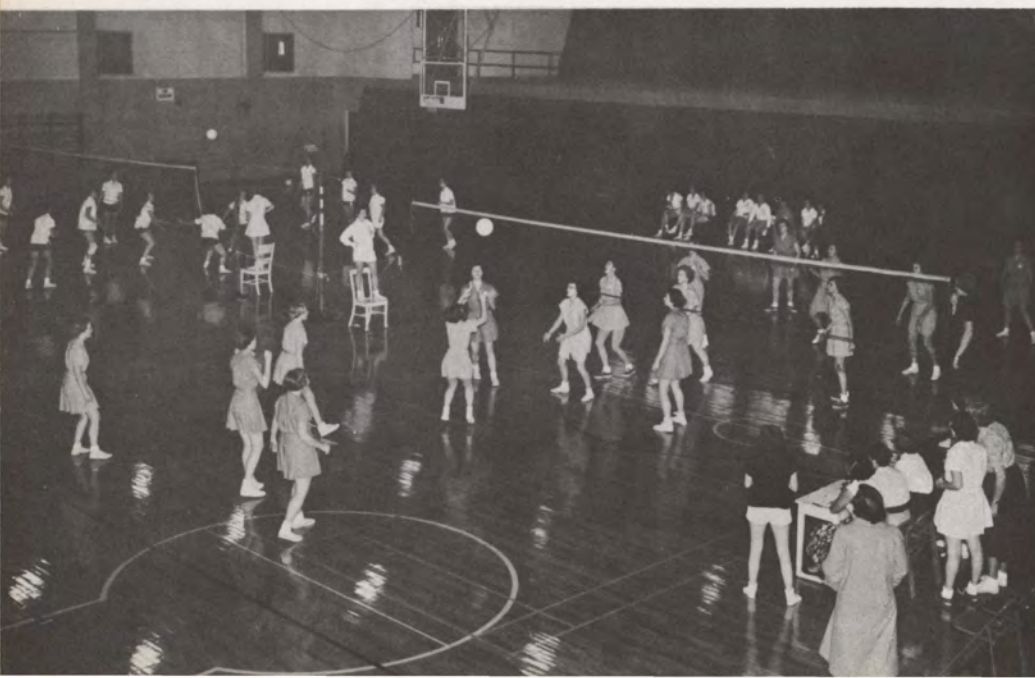
Connie Sarris





Ishkoodah

Left to right, back row: Marilyn Springer, Nancy Waggoner, Janice Smith, Elizabeth Jensen, Sonna Ehlers, Joy Green, Donna Schirk. 2nd row: Carol Hinde, Elaine Forsberg, Jo Bullard, Kay Mugge, Marilyn Hennings, Shirley Arndt, Glenna Page, Donna Westre, Carol Lehnus, Darlene Froehlich, 1st row: Julie Lester, Dixie Kirkhart, Barb Palmer, Sondra Shields, Verona Rock, Caryl Whitney, Masel Martin.



W. A. A.

Women's Athletic Association



Mu Phi Epsilon

National music sorority

Back row, left to right: Loretta Scoville, Judy Sellers, Elsie Shultz, Raye Cottington, JoAnn Vander Feen, Venona Rock, Sondra Shields, Shirley Rothman, Janice Fleming. 1st row: Kay Schumann, Donna Kargas, Mable Long, Georgia Hix, Lucy Yoshioka, Janice Primmer, Jean Arndt, Marion Johnson, Miss Grammer.

Phi Mu Alpha

National music fraternity

Back row, left to right: Ivan Reed, Blain Sprout, Fred Zimmat, Kermit Peters, Tom Canfield, Clark Gassman, Gene Persinger, Jerry Smith, Jon Vorisek, Russel Klay. Middle row: Jerry Huldeen, John Christensen, Jack Lamb, Leo Juffer, Bill DeJong, Dick Anshutz, Ron Roloff, John Kopecky. 1st row: Bob McIntire, Bob Steck, Bob Wilson, John Groethe, Orlin Solberg, Glen Hoept, Mr. Morrison.





Kappa Chi

Religious and Sociological Majors

Left to right: Ronald Roloff, Dave Schuldt, Omar Petterson, Thane Treptow, Loring Quimby, Gordon Fairchild. 2nd row: Alvin Trucano, Delos Corderman, Virg Howard, James Beinke, Loren Anderson, Raymond Bailey, Roger Swanson Dr. Green. 1st row: Mary Ann Hoffman, Sine Jorgensen, Marjorie Shook, Sharilyne Sweet, Charlotte Krug, Beverly Lindberg, Rita Brown.

M. S. M.

Methodist Student Movement

Back row, left to right, Rita Brown, Omar Petterson, Dave Schuldt, Jim Beinke, Roger Swanson, Charlotte Krug, Dr. Green. 1st row: Carol Knol, Mary Ann Hoffman, Marjorie Shook, Merilynn Jordan, Beverly Lindberg, Janice Fleming.



Physics Club

Left to right: Jerry Thacker, John Thomas, Don Hickok, Don Eilers, Robert Lewis, Don Palmer, Bob Davis. 1st row: Craig Thompson, Roger Dean, Mike Paradisanos, Bob Bachert, Don Foss, Mr. Green.



Sigma Pi Sigma



Left to right: Gordon Walter, Gordon Fountain, Bob Teimens, Bob Bostrom, Terry Walker, Gordon Dodge. 2nd row: John Hantla, Ruth Hantla, Roger Gohring, Amy Gohring, Dixie Reed, Gene Dymkowsky. 1st row: Marilyn Reynders, Mary Jane Tawney, Sonja Mackintosh, Faye West, Beth Weissen-see, Merilynn Jordan.

Left to right: Dr. Green, Rita Brown, Merilynn Jordan. 1st row: Elizabeth Jensen, Donna Schirck.



S. C. A.
Student Christian Association



Back row, left to right: Ken Zeising, Jack Pommrehn, Jack Hall, Don Poppen, Ken DeVries, Mr. Tom-meraasen. 1st row: Denver Birkhoefer, John Wold, Jay Kaplan, Lee Dalas.

Intra Fraternity

Back row, left to right: Amy Gohring, Connie Sarris, Jean Arndt, Miss Kuhn, Mrs. Pyle, Lucy Yoshioka, Georgia Hix, Miss Batzer. Seated: Adele Kirkpatrick, Betty Borchers, Nancy Lehan, Doris Thompson, Mrs. Burris.

Intra Sorority



Biology Club



Left to right: Robert Leach, Paul Kirkegaard, Fred Girard, Richard Tester, Gordon Fairchild, Oscar Kourany, Eddie Kourany, Tom Cale, *Dave Reinsch. 2nd row: Mr. Nydegger, Roger Cunningham, Roy Petersen, Merlin Anderson, Delos Corderman, Dick Gasser, Harry Turner, Rodney Larson, David Lohr, *Albert Okonkwo, Bill Lo. 1st row: Dorothy Wubben, Wassileh Khoury, Ruth Williams, Marilyn Hennings Terry Smith Dorothy Drommer, JoAnna Challman.
*Beta Beta Beta.

Cosmopolitan Club

Back row, left to right: Armando Sardon, Musa Nasir, Isa Majaj, Dean Tweito, Paul Jacobs, Bob Slawson, Bill Lo. 1st row: Mrs. Burris, Hugo Sardon, Aura Aguirre, Mrs. Tweito, Mary Jane Tawney, Zenia Perez, Mike Paradisanos, Mr. Burris.



Standing, left to right: Dr. Fyfe, Lyle McDole, Roger Frank. Seated: Gene Cannaday, Merilynn Jordan, Miss Batzer, Nancy Samuelson, Gordon Walter. Absent: Kent Watkins, Amy Gohring.

Manuscript Club

Left to right: Gordon Walter, Amy Gohring, John Thomas, Ruth Hantla, Cesar Lay, Miss Batzer. Seated: Mary DeJong, Patricia Wenzel, Joan Schroeder, Merilynn Jordan, Nancy Samuelson. Not present: Betty Erickson, Lyle McDole.



Sigma Tau Delta

Honorary English Fraternity



F. T. A.

Future Teachers of America

Back row, left to right: Elaine Forsberg, Carol Hinde, Glenna Page, Nancy Waggoner, Caryl Whitney, LaVonne Schroeder, Carol Lehnus, Elizabeth Jensen, Donna Schirk, Dorothy Guyett, Sonya Mackintosh, Kay Mugge, Jo Bullard, Mary Ann Galusha. 2nd row: Joanne Wilson, Ellen Huster, Ilene Anderson, Julie Lester, Joy Green, Elsie Shultz, Georgia Hix, Raye Cottingham, Joyce Arnold, Rosie Remmers, Dianne Metz. 1st row: Marilyn Springer, Donna Sanders, Kay Fristad, Donna Ehlers, Marlys Watson, Zenia Perez, Mable Long, Jean Arndt, Raye Cottingham, Rita Brown.

Who's Who

Twelve outstanding seniors picked to represent Morningside College in American Universities and Colleges.

Betty Erickson, Amy Gohring, Tom Hackney, Ruth Hantla, Kermit Isaacson, Bob Miller, Buck Miller, Connie Sarris, Faye Shulkin, Doris Thompson, Terry Walker, Ken Zeising.



Tom Hackney
President

Student Council

The Student Council was fortunate to be made up of hard working students, mindful of their obligation to the Student Body. They met once a week throughout the year to handle routine and new business. Among the events planned and executed were Homecoming, Mardi-Gras, Christmas Formal, Polio Fund Drive, and many others. The Student Council carried on a program for re-allocation of the Students Funds, improved the Student Union's eating and seating facilities, placed bulletin boards on 1st floor of Main Hall and carried on a parking program to keep entrance to Main Hall clear. Guiding the council in these achievements were the advisors, Dr. Kuhn and Dr. Bauer.

Ken Zeising
Vice Pres.

Shelby Johnstone
Pro. & Act. Dir.

Wally Krone
Advocate

Bev Giehm
Member at Large

Connie Sarris
Inter-Sor. Rep.

Betty Erickson
Secretary

Gil Ducommun
Pro. & Act. Dir.

Don Templeton
Advocate

Jack Hall
Publicity

Roger Swanson
Relig. Rep.

Ruth Hantla
Treasurer

Bob Tiemens
Soc. Dir.

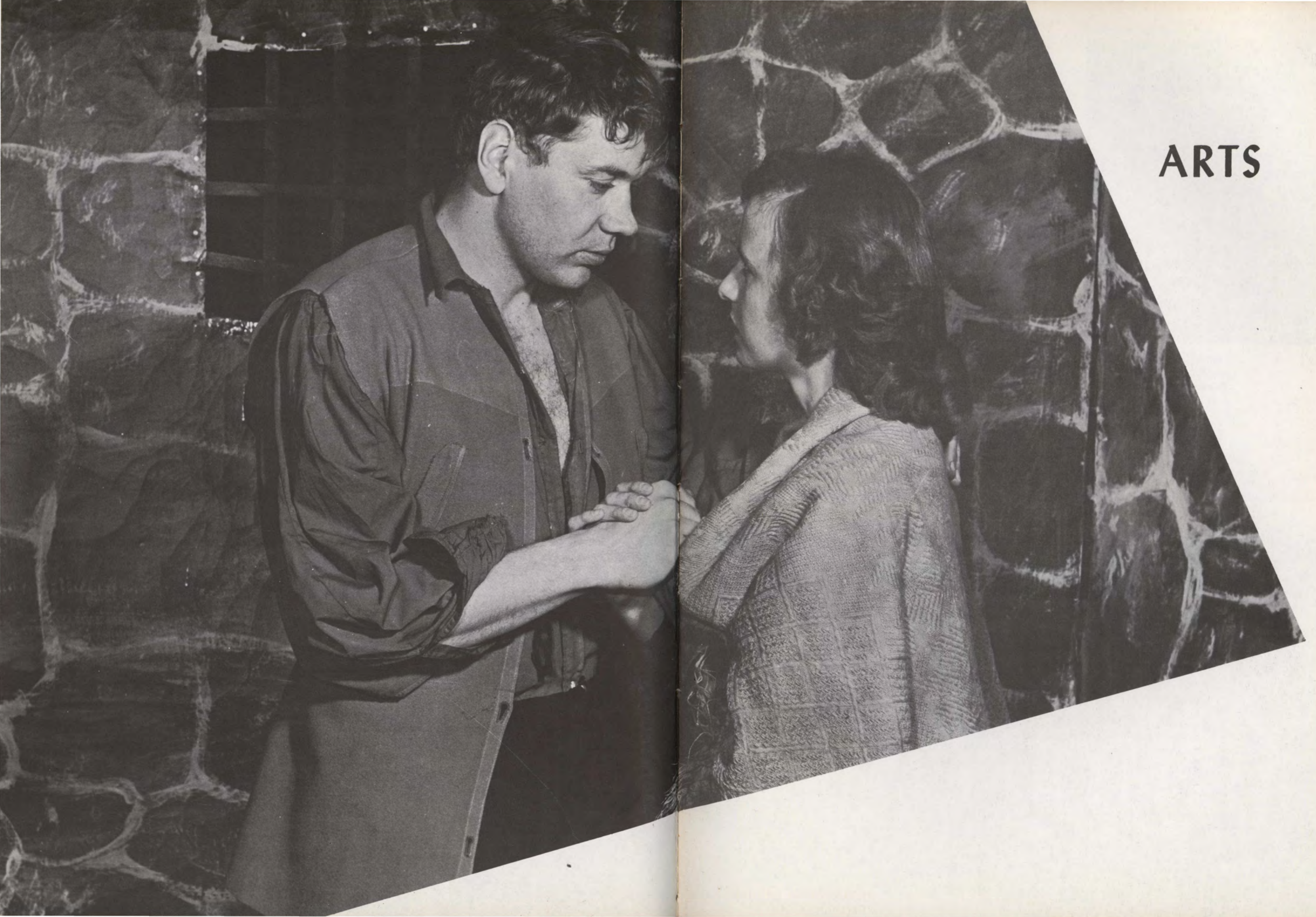
Jean Arndt
Freshman Dir.

Denver Birkhofer
Inter-Frat. Rep.

Mary Ann Hoffman
Relig. Rep.



ARTS





Director
Robert Larson

Choir

The Morningside College Choir was organized thirty years ago for the purpose of studying unaccompanied choral singing. The choir has attained notable distinction for its fine ensemble and beautiful harmonic effects. The annual tour of the choir this year took them to many cities throughout Iowa and Illinois. The highlight of the tour being a concert in Chicago and a tour of the city. Personnel include: Sopranos, Phyllis Ahrenstorff, Shirley Cox, Janet Fouts, Marilee Haddock, Elizabeth Jensen, Marian Johnson, Donna Kargas, Marlys Kinnan, Carol Lehnus, Mabel Long, Sharon Montgomery, Janice Primmer, Judith Sellers, Elsie Shultz, Marilyn Springer, Marlys Watson; Altos, Jane Beck, Raye Cottingham, Elaine Forsberg, Carol Hinde, Georgia Hix, Mary Ann Hoffman, Beverly Lindberg, Mary Jane Miller, Venona Rock, Sondra Shields, Jo Vanderfeen, Martha Winkler, Lucy Yoshioka; Tenors, Richard Anshutz, John Christiansen, William DeJong, Delmar Graf, John Groethe, Anthony Klein, Jack Lamb, Ronald Roloff, Robert Steck, Jon Vorisek, Robert Wilson; Basses, Thomas Canfield, Clark Gassman, Leo Juffer, John Kopecky, Dale Lange, Robert McIntire, Kermit Peters, Ivan Reed, Jerry Roland, Jerome Smith, Orlin Solberg, Blaine Sprout, Loren Tinkey, Fred Zimmat.

Band

The Band carried a full schedule again this year giving concerts at Christmas and in the Spring. They did a wonderful job of creating pep and enthusiasm at the many games and pep rallies. The members of the band this year are: Phyllis Ahrenstorff, Richard Anshutz, Edgar Bedell, Stuart Buell, John Christiansen, Shirley Cox, Matthew DeCoro, Bill DeJong, Ronald Dirks, Janice Fleming, Gordon Fountain, Delmar Graf, Jeanne Graham, John Groethe, Marilee Haddock, Glen Houpt, Gerald Huldeen, Frank Jettner, Marian Johnson, Marlys Kinnan, Anthony Klein, John Kopecky, Jack Lamb, Dale Lange, Mabel Long, Robert McIntire, Eugene Persinger, Kermit Peters, Arnold Quinonez, Lou Reed, Venona Rock, Ronald Roloff, Shirley Rothman, Sondra Shields, Orlin Solberg, Blaine Sprout, Robert Steck, J. Thomas, Loren Tinkey, Marlys Watson, Glen Wheeler, Martha Winkler, Robert Wilson, Fred Zimmat, Kathryn Schumann.



Director
Robert Lowry





Frederic W. Hile
Professor of Speech

The two productions of College Theater were directed by Margaret Dutton, instructor in English.

"Our Town," a singularly touching American play by Thornton Wilder was given a poignant performance at the first of the year. In contrast, the department produced a powerful American drama by Arthur Miller, "The Crucible," depicting the witch hunts of Salem in 1692. Authentic costuming helped to set the stage for a realistic dramatization of the Puritan conflict between good and evil.

Robert Bostrom, assistant in Speech, will conduct a summer dramatic performance.

Debating activities were conducted again this year by Professor Bowman. The teams, consisting of Marvin Zabin, Connie Hove, Merilynn Jordan and Joyce Runion, participated successfully in a five-round tournament at Nebraska University and several practice debates. The national debate question was, "RESOLVED: That the United States Extend Diplomatic Recognition to the Communist Government of China."

The discussion group under the direction of Mr. Hile was composed of Don Smith, Jim Smith, Isa Majaj and John Collins. One trip and several luncheon club prospects were planned for the group which started this spring. The topic under discussion concerned the American Education System.

The oral interpretation workshop and Radio-TV Workshop presented over 75 programs to clubs, church groups, schools, fraternal and service organizations.

In speech correction and speech clinic, activities have also increased. Extensive additions have been made in equipment and basic supplies for speech correction training.

The most promising and important aspect of the speech situation is the increase in enrollment of classes in the department. Thorough and equal training is given in all four phases of speech activities; dramatics, oral interpretation, forensics and speech correction.

The second College Theater production, "The Crucible" was carried out by

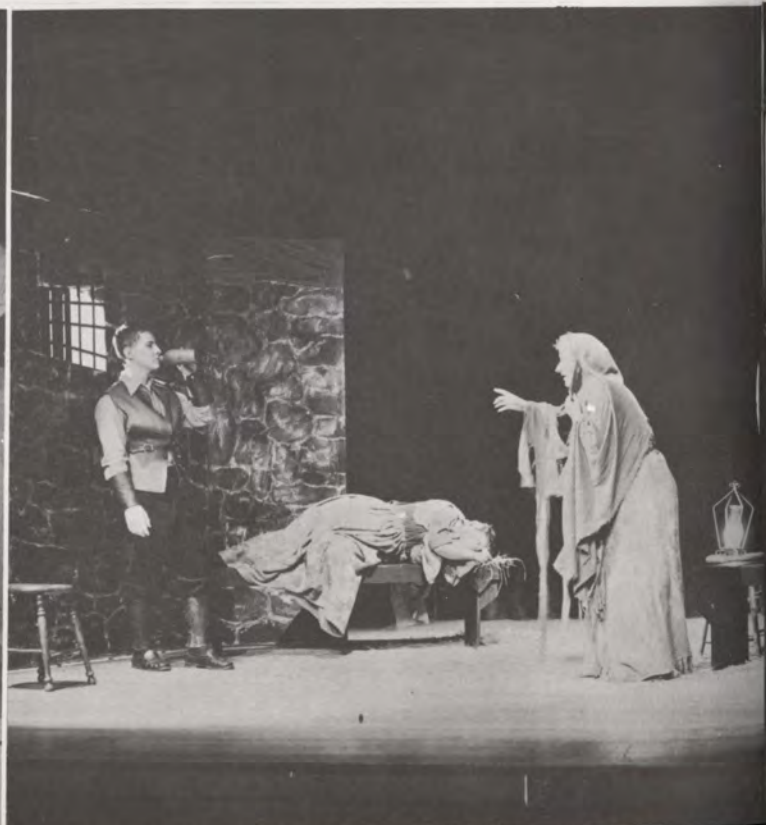
Tituba	Aura Aguirre
Reverend Samuel Parris	Bob Tiemens*
Abigail Williams	Beth Weisensee*
Susanna Wallcott	Joanne Franzen
Mrs. Anna Putnam	Merilynn Jordan*
Thomas Putnam	Gene Quilleash
Mercy Lewis	Joan Schultz
Mary Warren	Masel Martin
Betty	Beth Brenneman
John Proctor	Robert Bostrom*
Rebecca Nurse	Marilyn Reynders
Giles Corey	Verne Studd
Reverend John Hale	Gordon Fountain*
Elizabeth Proctor	Faye West
Francis Nurse	Eugene Dymkowski
Ezekiel Cheever	John Wold
John Willard	Dick Metcalf
Judge Hathorne	Gordon Walters*
Deputy-Governor Danforth	Keith Tandy
Sarah Good	Mary Ann Hoffman

This year's cast for "Our Town" included

STAGE MANAGER	Robert Bostrom
MRS. GIBBS	Dixie Lee Reed
MRS. WEBB	Marilyn Reynders
DR. GIBBS	Larry Griewe
JOE CROWELL	Thomas Gwinn
HOWIE NEWSOME	Al Trucano
GEORGE GIBBS	Gordon Fountain
REBECCA GIBBS	Jeanne Gwinn
WALLY WEBB	Ty Olson
EMILY WEBB	Norma Peterson
PROFESSOR WILLARD	Roger Gohring
MR. WEBB	Keith Tandy
WOMAN IN BALCONY	Masel Martin
MAN IN AUDITORIUM	Gene Wulf
LADY IN AUDITORIUM	Sharon Reed
SIMON STIMSON	Gordon Walter
MRS. SOAMES	Sonya Mackintosh
CONSTABLE WARREN	Robert Kummer
SI CROWELL	John Bowman
BASEBALL PLAYERS	John Hantla, Gordon Dodge
SAM CRAIG	Bob Tiemens
JOE STODDARD	Gene Wulf
PEOPLE OF THE TOWN	Merilynn Jordan, Sharon Reed, John Hantla, Gordon Dodge, Masel Martin



Margaret Dutton
Director





Sioux Queen Kay Mugge



**Attendant
Dorothy Drommer**

**Attendant
Anne Marshall**



**Attendant
Dixie Kirkhart**

**Judge
Tony Curtis**





Co-editor Gretchen Jensen

The Sioux

Co-editors.....Pat Thacker
Gretchen Jensen
Sports Editor.....Kent Watkins
Associate Editors.....Faye West
Joyce Arnold
Xenia Perez
Marilynn Jordan
Dick Parkhill
Photographer.....Art Barrett



Co-editor Pat Thacker

Morningside's student newsmagazine was published 15 times this year, an average of one issue every other week. The cost of the publications is paid entirely by student funds and advertising, and the editorial policy is established by the student editors, who boast complete freedom in the choice of materials for publication.

Under the capable editorship of Jack Hall and managing editorship of Kent Watkins, the C. R. has a staff of four efficient associate editors and over 20 reporters, as well as five technical aids. Tom Rose heads the business staff.

The C. R. has consistently maintained high journalistic, editorial and layout standards as confirmed by its receipt of honor ratings from the Associated College Press for many years.



Editor Jack Hall

The Collegian Reporter





HIGHLIGHTS



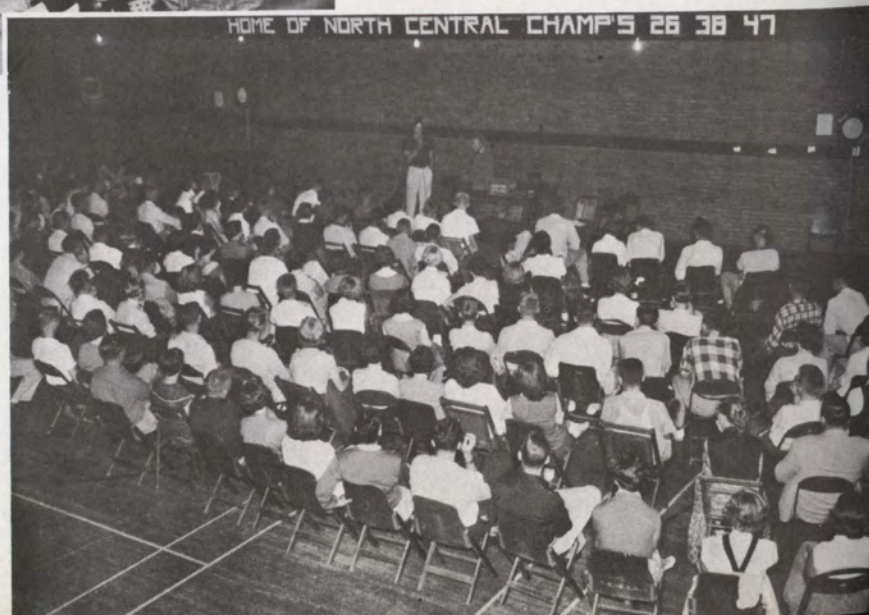
Registration



S. C. A. Mixer



Dean's Party





Freshman Talent Show



Big-Little Sister Tea



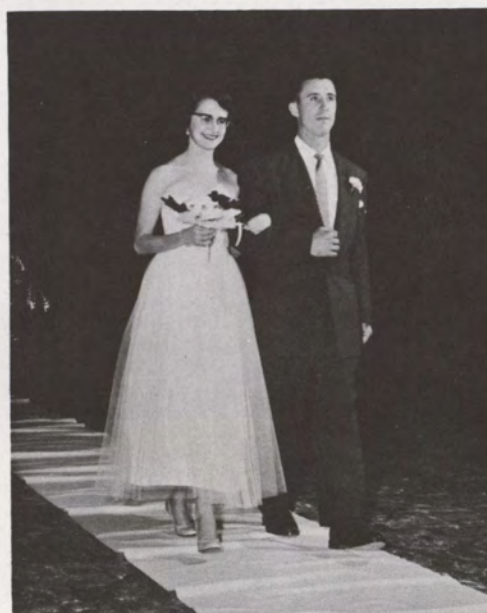
Big-Little Sister Picnic







Attendant: Doris Thompson
Escort: John Riordon



Attendant: Nancy Lehan
Escort: Bill Ide



Queen: Connie Sarris
Escort: Bud Crewdson



Homecoming Queen Connie Sarris



Former Homecoming Queens

Dance



PARADE



Game



Band Day



**Girls' Dorm
Halloween
Party**



Agora Leadership Dinner





Barbeque Ball



Faculty Reception



**Women's
Dorm
Christmas
Party**



**Christmas
Formal**



Christmas Concert





**All Campus
Greek
Party**



**Queen of Hearts
Dance**



Miss Dimmitt's Birthday Party



Religion In Life Week





Mardi Gras



**Sinfonian
Inn**





**Phi
Sigma
Talent
Revue**



**Club
A T D**

Science Exposition



Dorm Formal





Walk

Out

Day



**May Queen
Masel Martin**

**Attendant
Connie Jones**

**Attendant
Dixie Kirkhart**

**Attendant
Elizabeth Jenson**

**Attendant
Barbara Palmer**



**Agora
Carnival**



Mother-Daughter Banquet



MIDYEAR GRADUATES

William D. Brown: B.A., Speech

Jorge J. Calvo: B.S., Natural Sciences; Beta Beta Beta, Cosmopolitan Club, Science Exposition

James K. Dunn: B.S., Mathematics

Kermit L. Isaacson: B.S., Physical Education; Gamma Iota Alpha, FTA, Co-captain football, Who's Who, President M Club.

Wallace A. Krone, Jr.: B.A., Physical Education; Phi Sigma, Advocate Student Council, Interfraternity Council, M Club, FTA, Intramural Director, Collegian Reporter, Track, Basketball, Football

Betty E. Meier: B.S., Education

Dwaine F. Miller: B. S., Business Administration; Sigma Phi Epsilon, M Club, Football, Basketball

Robert B. Miller: B.A., Business Administration; Sigma Phi Epsilon, M Club, Vice-President Student Council, Who's Who, Football, All-conference Football

Donald G. Murray: B.A., Business Administration

Norma L. Peterson: B.A., Sociology; Vice-President Kappa Zeta Chi, Alpha Tau Delta, Choir, Band, Dorm counselor

Walter B. Phelps: B.A., English; Phi Sigma, President MSM, Track, Kappa Chi.

Faye Shulkin: B.A., Sociology; Zeta Sigma, Alpha Kappa Delta, Agora, Who's Who

Larry J. Toner: B.S., Business Administration; Alpha Tau Delta, Sigma Phi Epsilon, Football, M Club

Dean L. Tudehope: B.S., Business Administration; Vice-President Sigma Phi Epsilon

JUNE GRADUATES

Dale R. Alberts: B.A., Sociology, Economics and Psychology; Alpha Tau Delta

Loren E. Anderson: B.A., History, English; Kappa Chi

Wesley H. Boldt: B.A., Business Administration Economics; Sigma Phi Epsilon, Baseball, Basketball, M Club, President Junior Class, Senior Class President, President Men's Dormitory House Council

Robert N. Bostrom: B.A., Speech; Phi Sigma, Collegian Reporter, Choir, Band, Alpha Psi Omega, FTA, Football

Alvin L. Brunsting: B.A., Business Administration, History; M Club, Basketball

Edwin L. Brunsting: B.A., Biology, Chemistry
Alfred L. Carlson: B.S., Sociology, Psychology

Duane W. Deane: B.A., Business Administration, Economics

Richard Englebrecht: B.S., Functional and Natural Sciences

Betty Lou Erickson: B.A., Sociology; Sigma Tau Delta, Who's Who, Student Council Secretary, Agora President, F.T.A., Dean's Honor Roll

Donald C. Foss: B.S., Minor—English; Vice-President Sigma Phi Sigma, Math-History

Blaine Garlow: B.A., Business Administration, Economics and History; Football

Clark Gassman: B.M., Music; Piano, Band, Choir President, Phi Mu Chorus, Secretary Freshman Class, Treasurer Phi Mu Alpha

Amy R. Gohring: B.A., English, Home Economics; President Kappa Zeta Chi, Home Economics Club, Sigma Tau Delta, Alpha Psi Omega, Student Council Member-at-Large, Inter-Sorority Council, Who's Who

Roger E. Gohring: B.S., Physical Education, Biology; Sigma Phi Epsilon, President Alpha Psi Omega, M Club, Biology Club, Football, All Conference Guard

Richard Graham: B.A., Business Administration, Economics

Monte D. Gruett: B.S., Chemistry; Minor-Math., Sigma Phi Epsilon, Collegian Reporter, American Chemical Society, Intramurals

Thomas C. Hackney: B.A., Sociology, Psychology; Phi Sigma, Basketball, Tennis, President Student Council, President Men's Dorm Council, SCA

Ruth Hantla: Secretary Sophomore Class, Secretary, Treasurer Agora, Recording Secretary, Vice-President KTTA, Vice-President Home Ec Club, Secretary, Treasurer Student Council, Vice-President Alpha Psi Omega, Secretary, Treasurer Sigma Tau Delta, Who's Who, SCA, FTA, Kappa Chi

Robert L. Hildreth: B.S., Business Administration, Sociology; Tau Kappa Epsilon, Collegian Reporter, Men's Dorm Council

Douglas E. Jones: B.A., Business Administration, Economics; Gamma Iota Alpha, Associate Editor of Collegian Reporter

John Kopecky: B.M.E., Music; Minor-English; Sinfonia, Choir, Band

Lois Krieger: B.A., Functional and Social Sciences

Charlotte L. Krug: B.A., Religion, Home Economics; Kappa Chi, MSM, SCA, President Home Economics Club, FTA

Donald P. Kurtenbach: B.A., Business Administration, History

Nancy Lehan: B.S., Business Administration, Sociology; President Kappa Zeta Chi, Sioux, Collegian Reporter, Homecoming Attendant, Agora, Carnival Queen, Cheerleader, Inter-sorority Council, Ishkoodah

Vyonne O. Lehnus: B.S., Sociology, Physical Education; Basketball, M Club, Cosmopolitan Club

Wilbur Long: B.S., Sociology, Physical Education; Basketball, M Club, Cosmopolitan Club

Curtiss G. Lovelace: B.A., Business Administration, Economics; Secretary Gamma Iota Alpha

Lyle McDale: B.A., English, Sociology

Sonya Mackintosh: B.A., Functional and Natural Sciences, Social Studies

Harold G. Martin: B.S., Functional and Natural Sciences, Social Studies; FTA

Roberta Maurer: B.A., English, History

Monte R. Mosier: B.A., Business Administration, Economics

Robert F. Motter: B.S., Chemistry; Minor-Mathematics; M Club Sigma Phi Epsilon, Football, All American Chemical Society, Vice-President Junior Class

Duane E. Oleson: B.S., Business Administration, Sociology; Sigma Phi Epsilon

Donald Palmer: B.S., Commerce Technology; Tau Kappa Epsilon, Baseball, Intramurals, Pre-Engineers Club

Michael E. Paradisanos: B.S. Mathematics, Physics; Sigma Pi Sigma President, Secretary Cosmopolitan Club, Pre-Engineering Club

Eugene H. Persinger: B.S., Business Administration, Economics; Phi Sigma, Phi Mu Alpha, Band, Choir, President Men's Dorm Council

Omar W. Pattersen: B.A., Philosophy, Sociology; Kappa Chi, MSM, Gospel Team

Joanne Preul: B.A., English, History; Kappa Pi Alpha, Choir, Collegian Reporter, Intra-sorority Council, Agora Board, FTA

Thomas W. Rose: B.A., Business Administration, Speech; President Gamma Iota Alpha, Collegian Reporter

Armando Sardon: B.A., Sociology, Psychology; MSM, SCA, President Cosmopolitan Club

Constance P. Sarris: B.A., Secretarial Science, English; President Kappa Pi Alpha, Cheerleader, Ishkoodah, Inter-sorority Council, Vice-President Agora, Student Council Inter-Sorority Representative, W.A.A., FTA, Collegian Reporter, Sioux, Queen Attendant, Homecoming Queen, Who's Who

Howard J. Staber: B.A., Economics, History; Football, Baseball, President M Club

Mrs. Orville Swanson: B.S., Home Economics; Minor English

Jerry Thacker: B.A., Mathematics and Music; Physics, Choir, Band, Secretary Sigma Pi Sigma

Doris Thompson: B.S., Business Administration, Sociology; President Alpha Sigma, President Home Economics Club, Who's Who, Inter-sorority Council, Homecoming Queen Attendant, Dorm Counselor, W.S.G.A.

Donald N. VanDer Weide: B.A., Physical Education, Mathematics; Basketball, President FTA

Don W. Verdoorn: B.A., Business Administration, Economics; Basketball, M Club

Jon H. Vorisek: B.M., Music, Voice; Phi Mu Alpha, Choir, Band, Sioux

Terry J. Walker, Jr.: B.A., Speech, English; Phi Sigma, Senior Class Vice-President, Alpha Psi Omega, FTA, Who's Who, Debate Team, Collegian Reporter, Press Bureau Director

Marlys M. Watson: B.M.E., Music; Minor English; Kappa Pi Alpha, FTA, Choir, Band, Ishkoodah

Marie C. Willer: B.S., History, Economics

Paul K. Williams: B.A., Sociology, Economics; Inactive Phi Sigma

Thomas R. Wold: B.A., History, Economics

Paul K. Zeising: B.A. Administration, Sociology; Tau Kappa Epsilon, Who's Who, Student Council Vice-President, Collegian Reporter Editor, President Phi Sigma, Religion-in-Life Week Committee, Ethel Murray Fund General Chairman

